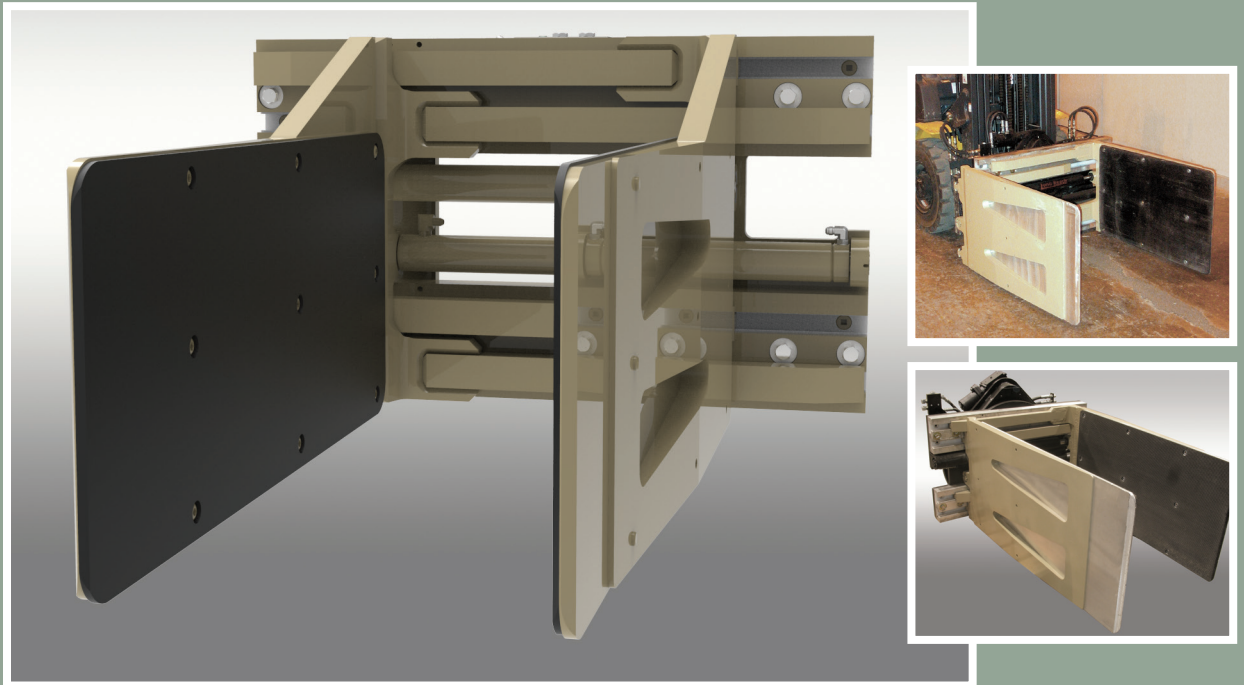


Long Reach All Purpose Clamps



Versatile and Efficient

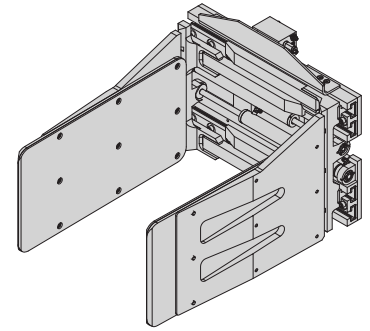
Improve productivity and reduce the number of trucks needed when you simplify order picking with the versatile Long Reach All-Purpose Clamp.

- All hoses, valves and fittings can be serviced from the front of the truck
- Grease-free handling keeps all loads clean
- “Repair-N-Place” serviceability means no-lube polymer wear strips can be replaced in just minutes
- Available in sidshefting, non sidshefting, and 360° rotating configurations
- Low attachment profile results in increased visibility and operator ease
- Rubber-covered aluminum contact pads protect your load from wear (reversible pads also available)



LCS All-Purpose Clamps

Clean, grease-free handling — no lubrication required
 Rubber covered aluminum contact pads
 Unsurpassed visibility — low profile and thin-line heel



Non-Sideshifting All Purpose Clamps, 1 Function

Model Number	Capacity lb @ 24"	Opening Range (in)	Arm Size H x L (in)	Mounting Class	Lost Load AET (in)	HCG (in)	VCG (in)	Weight (lb)
LCS-25NN-A1830	2,500	19.4–66.1	18 x 30	II	5.0	8.0	8.5	898
LCS-25NN-A1836		18.8–65.5	18 x 36			9.8	8.2	981
LCS-25NN-A2430		19.4–66.1	24 x 30			7.8	8.2	922
LCS-25NN-A2436		18.8–65.5	24 x 36			9.5	8.0	1,012
LCS-25NN-A3030		19.4–66.1	30 x 30			7.6	8.0	1,027
LCS-25NN-A3036		18.8–65.5	30 x 36			9.2	7.8	1,041
LCS-25NN-A3630		19.4–66.1	36 x 30			11.0	11.7	1,130
LCS-25NN-A3636		19.4–66.1	36 x 36			13.3	11.9	1,274
LCS-35NN-A1830	3,500	19.4–71.1	18 x 30	II	5.0	7.7	8.5	939
LCS-35NN-A1836		18.8–70.5	18 x 36			9.5	8.3	1,024
LCS-35NN-A1848		18.6–70.4	18 x 48			13.6	8.1	1,237
LCS-35NN-A2430		19.4–71.1	24 x 30			7.5	8.3	964
LCS-35NN-A2436		18.8–70.5	24 x 36			9.2	8.1	1,054
LCS-35NN-A3030		19.4–71.1	30 x 30			7.5	8.1	989
LCS-35NN-A3036		18.8–70.5	30 x 36			9.0	7.8	1,084
LCS-35NN-A3040		18.6–70.4	30 x 40			10.1	7.8	1,195
LCS-35NN-A3630		19.4–71.1	36 x 30			10.7	11.7	1,172
LCS-35NN-A3636		19.4–71.1	36 x 36			12.9	11.9	1,316
LCS-35NN-A4028	19.4–71.1	40 x 28	9.5	11.5	1,126			
LCS-35NN-A4040	19.2–71.0	40 x 40	14.8	11.8	1,462			
LCS-50NN-A1836	5,000	21.8–76.1	18 x 36	II or III	5.0/6.0	9.3/10.3	8.3	1,048
LCS-50NN-A1848		21.6–76.0	18 x 48			13.8 /14.8	8.0	1,287
LCS-50NN-A2430		22.4–76.8	24 x 30			7.4/8.4	8.3	988
LCS-50NN-A2436		21.8–76.1	24 x 36			9.1/10.1	8.1	1,077
LCS-50NN-A2448		21.6–76.0	24 x 48			13.3/14.3	8.7	1,327

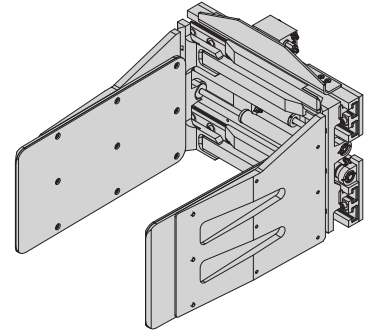
Recommended Hydraulic Supply

Model Number	Flow (gpm)	Max psi
All Models	7–10	2,500

Hydraulic flow less than minimum may reduce operating speed and/or cause irregular arm movement. Higher flow may result in heat build-up, erratic operation and shortened hydraulic system life.

Minimum Truck Carriage Width

Model Number	Body Width (in)	Minimum Truck Carriage Width (in)
LCS-25	36	30
LCS-35	41	35
LCS-50	41	35



Sideshifting All Purpose Clamps, 2 Functions

Model Number	Capacity lb @ 24"	Opening Range (in)	Arm Size H x L (in)	Mounting Class	Lost Load AET (in)	HCG (in)	VCG (in)	Weight (lb)			
LCS-25NS-A1830	2,500	19.4-66.1	18 x 30	II	5.0	8.0	8.5	898			
LCS-25NS-A1836		18.8-65.5	18 x 36			9.8	8.2	981			
LCS-25NS-A2430		19.4-66.1	24 x 30			7.8	8.2	922			
LCS-25NS-A2436		18.8-65.5	24 x 36			9.5	8.0	1,012			
LCS-25NS-A3030		19.4-66.1	30 x 30			7.6	8.0	1,027			
LCS-25NS-A3036		18.8-65.5	30 x 36			9.2	7.8	1,041			
LCS-25NS-A3630		19.4-66.1	36 x 30			11.0	11.7	1,130			
LCS-25NS-A3636		19.4-66.1	36 x 36			13.3	11.9	1,274			
LCS-35NS-A1830		3,500	19.4-71.1			18 x 30	II	5.0	7.7	8.5	939
LCS-35NS-A1836			18.8-70.5			18 x 36			9.5	8.3	1,024
LCS-35NS-A1848	18.6-70.4		18 x 48	13.6	8.1	1,237					
LCS-35NS-A2430	19.4-71.1		24 x 30	7.5	8.3	964					
LCS-35NS-A2436	18.8-70.5		24 x 36	9.2	8.1	1,054					
LCS-35NS-A3030	19.4-71.1		30 x 30	7.5	8.1	989					
LCS-35NS-A3036	18.8-70.5		30 x 36	9.0	7.8	1,084					
LCS-35NS-A3040	18.6-70.4		30 x 40	10.1	7.8	1,195					
LCS-35NS-A3630	19.4-71.1		36 x 30	10.7	11.7	1,172					
LCS-35NS-A3636	19.4-71.1		36 x 36	12.9	11.9	1,316					
LCS-35NS-A4028	19.4-71.1	40 x 28	9.5	11.5	1,126						
LCS-35NS-A4040	19.2-71.0	40 x 40	14.8	11.8	1,462						
LCS-50NS-A1836	5,000	21.8-76.1	18 x 36	II or III	5.0	9.3	8.3	1,048			
LCS-50NS-A1848		21.6-76.0	18 x 48			13.8	8.0	1,287			
LCS-50NS-A2430		22.4-76.8	24 x 30			7.4	8.3	988			
LCS-50NS-A2436		21.8-76.1	24 x 36			9.1	8.1	1,077			
LCS-50NS-A2448		21.6-76.0	24 x 48			13.3	7.7	1,327			

Minimum Truck Carriage Width

Model Number	Body Width (in)	Minimum Truck Carriage Width (in)
LCS-25RN	36	30
LCS-35RN	41	35
LCS-50RN	41	35

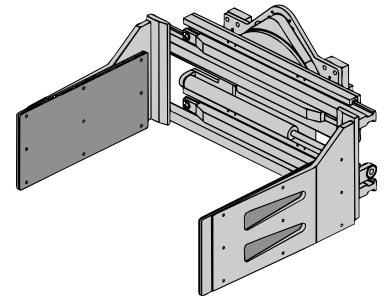
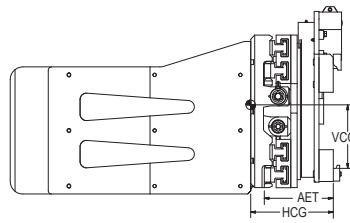
Recommended Hydraulic Supply

Model Number	Flow (gpm)	Max psi
All Models	7-10	2,500

Hydraulic flow less than minimum may reduce operating speed and/or cause irregular arm movement. Higher flow may result in heat build-up, erratic operation and shortened hydraulic system life.

LCS 360° Rotating All-Purpose Clamps

Widely used in the textile industry
 Clean, grease-free handling — no lubrication required
 Rubber-covered aluminum contact pads
 Low profile body and thin-line heel offer unsurpassed visibility



360° Rotating All Purpose Clamps, 2 Functions

Model Number	Capacity lb @ 24"	Opening Range (in)	Arm Size H x L (in)	Mounting Class	Mounting Angle (°) ¹	Lost Load AET (in)	HCG (in)	VCG (in)	Weight (lb)
LCS-25RN-A2430	2,500	18.9–65.6	24 x 30	II	0	10.4	13.3	9.9	1,480
LCS-25RN-A2436		18.6–65.4	24 x 36			10.4	14.3	9.9	1,600
LCS-35RN-A2430	3,500	18.9–70.6	24 x 30	II	0	10.4	12.4	9.9	1,500
LCS-35RN-A2436		18.6–70.4	24 x 36			10.4	14.1	9.9	1,645
LCS-35RN-A2440		18.9–70.6	24 x 40			10.4	15.7/15.5	9.9	1,685
LCS-50RN-A2430		21.9–76.3	24 x 30			10.4/10.1	11.6/12.6	10.7	1,750
LCS-50RN-A2436	5,000	21.6–76.0	24 x 36	II or III	0	10.4/10.1	13.1/15.1	10.7	1,895
LCS-50RN-A2448		21.6–76.0	24 x 48			10.4/10.1	16.7/17.7	10.7	2,130

¹ Four degree (4°) mounting available at no charge.

Minimum Truck Carriage Width

Model Number	Body Width (in)	Minimum Truck Carriage Width (in)
LCS-25RN	36	29
LCS-35RN	41	29
LCS-50RN	41	33

Recommended Hydraulic Supply

Model Number	Flow (gpm)	Max psi
All Models	12	2,500

Hydraulic flow less than minimum may reduce operating speed and/or cause irregular arm movement. Higher flow may result in heat build-up, erratic operation and shortened hydraulic system life.

Choose Long Reach for serviceability, value, and custom design

Multi-Pallet Handlers
 Fork Positioners
 Integral Carriages
 Paper Roll Clamps
 Lateral Clamps

Carton Clamps
 Push-Pulls
 Rotators
 Custom Design

21433 SW Oregon Street
 Sherwood, Oregon 97140-9799 USA
 Toll free: (800) 285-7000
 Phone: (503) 625-2560
 Fax: (503) 625-7269
 Email: marketing@alliedsystems.com
www.alliedsystems.com/Longreach

LONG REACH[®]
 A Division of Allied Systems Company