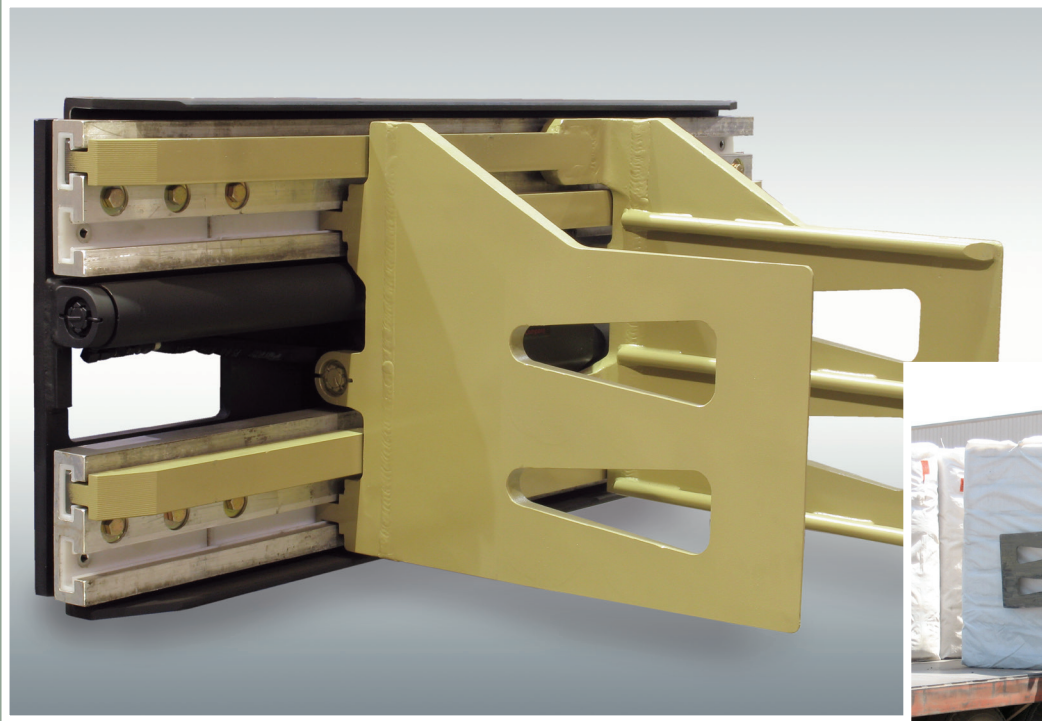


Long Reach Bale Clamps



Improve productivity by reducing the number of trucks needed to perform a job.

Long Reach bale clamps allow the driver to easily and safely pick up as many as four bales at a time, in either the upright or lance position. The rotating bale clamp can easily and safely position bales for entry on uneven outdoor/indoor surfaces.

- Sideshifting and upending models available
- Available in rotating and non-rotating models for added handling versatility. The rotating clamp can reduce the damage to wrappers caused by tipping.
- Compress Special model is center-mounted to prevent wear from contact with the floor
- Back plate is pre-drilled for Class II, III, or IV
- Rounded ribs are recessed in the middle to reduce creasing or tearing bale wrappers. Ribs significantly aid in tipping bales from vertical to horizontal.
- Heavy duty steel body is designed to withstand the most rugged applications.
- Channel style arms provide added strength and durability.
- Grease-free handling keeps all loads clean
- Fast-response hydraulics keep productivity levels high
- 2,000 lbs - 20,000 lbs capacity
- Long Reach's patented "Repair-N-Place" design means no-lube polymer wear strips can be replaced in just minutes.

LCB/NSQ Bale Clamps

- ◆ LCB Series – for capacities through 8,000 lb
- ◆ NSQ Series for higher capacities
- ◆ Fully protected control valve on non-sideshifting LCB models
- ◆ Thicker, channel-style arms for added strength & durability above 7,000 lbs

Non-Sideshifting Bale Clamps, 1 Function

Model Number	Capacity lb @ 24"	Opening Range (in)	Arm Size H x L (In)	Mounting Class	Lost Load AET (in)	HCG (in)	VCG (in)	Weight (lb)
LCB-25NN-B1527			15 x 27			7.4		785
LCB-25NN-B1532	2,500	18.5–65.3	15 x 32	II	5.0	8.9	9.4	840
LCB-25NN-B1836			18 x 36			10.1		885
LCB-35NN-B1527			15 x 27			7.1		827
LCB-35NN-B1532			15 x 32			8.1		864
LCB-35NN-B1836	3,500	18.5–70.3	18 x 36	II	5.0	9.8	9.4	927
LCB-35NN-B1840			18 x 40			11.2		1,019
LCB-35NN-B1848		18.0–69.8	18 x 48			14.1		1,125
LCB-50NN-B1827			18 x 27			7.0/8.0		851
LCB-50NN-B1832			18 x 32			8.4/9.4		906
LCB-50NN-B1836	5,000	21.5–75.9	18 x 36	II or III	5.0/6.0	9.6/10.6	9.4	951
LCB-50NN-B1840			18 x 40			11.0/12.0		1,043
LCB-50NN-B1848		21.0–75.4	18 x 48			13.8/14.8		1,149
LCB-5GNN-B1827			18 x 27			5.7/6.7		1,184
LCB-5GNN-B1832	5,000	19.0–91.8	18 x 32	II or III	5.5/6.5	6.8/7.8	9.6	1,240
LCB-5GNN-BC527			15 x 27			4.7/5.7		1,189
LCB-5ENN-BC527	5,000	37.5–128.3	15 x 27	II or III	5.5/6.5	6.2/7.2	10.0	1,364
LCB-5ENN-B1827			18 x 27			5.2/6.2		1,386
LCB-5ENN-B1832*	5,000	37.5–128.3	18 x 32	II or III	5.5/6.5	6.2/7.2	9.6	1,441
LCB-70NN-B1850*	7,000	20–84	18 x 50	III	7.3	10.3	12.4	2,145
LCB-7ANN-B2660	7,000	23–93	26 x 60	III	7.3	15.0	12.8	2,765
LCB-85NN-B1850			18 x 50			10.4		2,195
LCB-85NN-B1860	8,500	24–84	18 x 60	III or IV	7.3	11.3	11.8	2,345
NSQ-20DD-B3086	20,000	50–125	30 x 86	None	9.2	16.4	19.0	5,900

* Compress Special

LCB/NSQ Bale Clamps

- ◆ LCB Series – for capacities through 8,000 lb
- ◆ NSQ Series for higher capacities
- ◆ Clean, grease-free handling – no lubrication required
- ◆ Fully protected control valve on non-sideshifting LCB models
- ◆ Thicker channel style arms for added strength & durability above 8,500 lbs

Sideshifting Bale Clamps, 2 Functions

Model Number	Capacity lb @ 24"	Opening Range (in)	Arm Size H x L (in)	Mounting Class	Lost Load AET (in)	HCG (in)	VCG (in)	Weight (lb)
LCB-25NS-B1527			15 x 27			7.4		785
LCB-25NS-B1532	2,500	18.5–65.3	15 x 32	II	5.0	8.9	9.4	840
LCB-25NS-B1836			18 x 36			10.1		885
LCB-35NS-B1527			15 x 27			7.1		827
LCB-35NS-B1532			15 x 32			8.1		864
LCB-35NS-B1836	3,500	18.5–70.3	18 x 36	II	5.0	9.8	9.4	927
LCB-35NS-B1840			18 x 40			11.2		1,019
LCB-35NS-B1848		18–69.8	18 x 48			14.1		1,125
LCB-50NS-B1827			18 x 27			7.0		851
LCB-50NS-B1832			18 x 32			8.4		906
LCB-50NS-B1836	5,000	21.5–75.9	18 x 36	II or III	5.0	9.6	9.4	951
LCB-50NS-B1840			18 x 40			11.0		1,043
LCB-50NS-B1848		21–75.4	18 x 48			13.8		1,149
LCB-5GNS-B1827	5,000	19–91.8	18 x 27	II or III	5.5	5.7	9.6	1,184
LCB-5GNS-B1832			18 x 32			6.8		1,240
LCB-5GNS-BC527	5,000	19–91.8	15 x 27	II or III	5.5	4.7	10.0	1,189
LCB-5ENS-BC527*		37.5–128.3	15 x 27			6.2		1,364
LCB-5ENS-B1827*	5,000	37.5–128.3	18 x 27	II or III	5.5	5.2	9.6	1,386
LCB-5ENS-B1832			18 x 32			6.2		1,441
LCB-70NS-B1850	7,000	20–84	18 x 50	III	7.3	10.3	12.4	2,145
LCB-7ANS-B2660		23–93	26 x 60	III	7.3	15.0	12.8	2,765
LCB-85NS-B1850			18 x 50			10.4		2,195
LCB-85NS-B1860	8,500	24–84	18 x 60	III or IV	7.3	11.3	11.8	2,345
NSQ-20DS-B3086	20,000	50–125	30 x 86	None	9.2	16.4	19.0	5,900

* Compress Special

Minimum Truck Carriage Width

Model Number	Body Width (in)	Minimum Truck Carriage Width (in)
LCB-25	36	30
LCB-35	41	35
LCB-50	41	35
LCB-5G	62	32.5
LCB-5E	68	39
LCB-70	50	36
LCB-7A	62	36
LCB-85 ITA III	50	36
LCB-85 ITA IV	50	42
NSQ-20	72	Consult Factory

Recommended Hydraulic Supply

Model Number	Flow (gpm)	Max psi
LCB-25/35/50/5G/5E	7–10	2,500
LCB-70/7A/85/8A	7–10	2,500
NSQ-20	15–18	2,250

Hydraulic flow less than minimum may reduce operating speed and/or cause irregular arm movement. Higher flow may result in heat build-up, erratic operation and shortened hydraulic system life.

LCB 360° Rotating Bale Clamps

- ◆ LCB Series – for capacities to 5,000 lb
- ◆ Clean, grease-free handling – no lubrication required
- ◆ Thin slab style arms for easy entry between stacks

360° Rotating Bale Clamps, 2 Functions

Model Number	Capacity lb @ 24"	Opening Range (in)	Arm Size H x L (in)	Mounting Class	Mounting Angle (°) ¹	Lost Load AET (in)	HCG (in)	VCG (in)	Weight (lb)
LCB-25RN-B1527			15 x 27			10.4	10.1	10.5	1,285
LCB-25RN-B1532	2,500	18.0–64.8	15 x 32	II	0	10.4	11.2	10.5	1,350
LCB-25RN-B1836			18 x 36			10.4	12.3	10.5	1,405
LCB-35RN-B1527			15 x 27			10.4	10.0	10.4	1,325
LCB-35RN-B1532			15 x 32			10.4	11.5	10.5	1,418
LCB-35RN-B1836	3,500	18.0–69.8	18 x 36	II	0	10.4	12.1	10.5	1,447
LCB-35RN-B1840			18 x 40			10.4	13.2	10.5	1,500
LCB-35RN-B1848		18.0–69.8	18 x 48			10.4	15.4	10.6	1,610
LCB-50RN-B1827			18 x 27	II	0	10.4	9.5		1,578
				III	0	10.1	9.4	11.3	1,582
LCB-50RN-B1832			18 x 32	II	0	10.4	10.3		1,610
				III	0	10.1	10.2		1,615
LCB-50RN-B1836	5,000	21.0–75.4	18 x 36	II	0	10.4	11.3		1,700
				III	0	10.1	11.2	11.3	1,705
LCB-50RN-B1840			18 x 40	II	0	10.4	12.2		1,753
				III	0	10.1	12.1		1,758
LCB-50RN-B1848		21.0–75.4	18 x 48	II	0	10.4	14.2	11.3	1,862
				III	0	10.1	14.1		1,867
LCB-5GRN-B1827			18 x 27	II	0	10.9	9.4	11.2	1,790
	5,000	19.0–91.8		III	0	10.6	9.3		1,795
LCB-5GRN-B1832			18 x 32	II	0	10.9	10.4	11.2	1,880
				III	0	10.6	10.3		1,885
LCB-70RN-B1850	7,000	20–84	18 x 50	III	0	14.5	14.2	17.7	2,940
				IV	0	14.5	14.3	15.7	2,930
LCB85RN-B1850	8,500	20–84	18 x 50	III	0	14.5	14.2	17.8	2,970
				IV	0	14.5	14.3	15.8	2,960
LCB85RN-B1860	8,500	20–84	18 x 60	III	0	14.5	16.5	18.0	3,155
				IV	0	14.5	16.6	16.0	3,145

¹ Four degree (4°) mounting available at no charge.

Choose Long Reach for serviceability, value, and custom design

Multi-Pallet Handlers
Fork Positioners
Integral Carriages
Paper Roll Clamps
Lateral Clamps

Carton Clamps
Push-Pulls
Rotators
Custom Design

21433 SW Oregon Street
Sherwood, Oregon 97140-9799 USA
Toll free: (800) 285-7000
Phone: (503) 625-2560
Fax: (503) 625-7269
Email: marketing@alliedsystems.com
www.alliedsystems.com/Longreach

LONG REACH[®]
A Division of Allied Systems Company