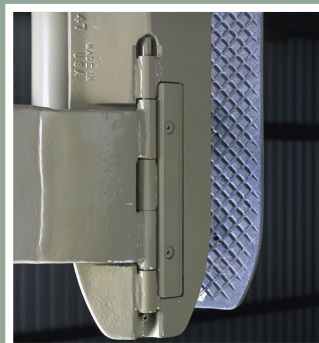


## Long Reach Paper Handling Options



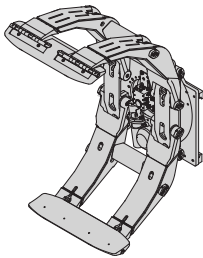
**Paper handling options available: Kraft, coated, and tissue paper roll clamps, pivot frame roll clamps, twin and quad pack clamps, sliding arm paper roll clamps, all-in-one pulp/paper clamps, roll head clamps and broke paper clamps**

Long Reach's many paper roll clamp designs have been perfected for newsprint, tissues, uncoated form and print stocks, packaging, gypsum wallboard facing, coated print stocks, laminates, milk cartons, food containers and more.

- Clamping cylinder check valves maintain clamping pressure even if supply pressure is lost.
- Up-front hydraulics on kraft and coated paper roll clamps lower the clamp's effective thickness, and allow easy service access to components while the clamp is still attached to the truck.
- Larger diameter pivot pins with lube fittings and steel bushings offer superior durability.
- Sure-Grip contact pads protect rolls from damage; the deeply contoured pad surface extends pad life.
- Zero degree flush mounting extends contact pad life and reduces roll damage.
- Economical fixed or versatile positionable short arm models are available in most capacities. Contact the factory for details.

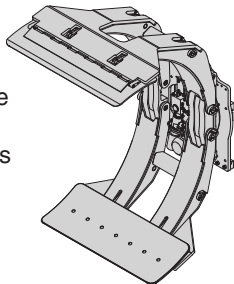
### KPR Series Kraft Paper Roll Clamps

- Fixed short-arm models easily handle uniform roll diameters
- Positionable short-arm models for a wide range of roll diameters
- 0° mounting; heavy-duty 360° continuous rotation
- Position-controlled short arm movement
- Inverted waffle pattern standard contact pad surface on all units



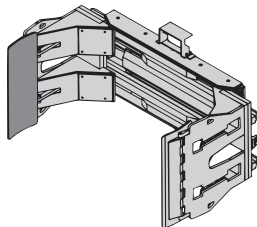
### CPR Series Coated Paper Roll Clamps

- The strength and durability needed to handle coated paper
- Fixed short-arm models easily handle uniform roll diameters
- Positionable short-arm models for a wide range of roll diameters
- 0° mounting; heavy-duty 360° continuous rotation
- Position-controlled short arm movement



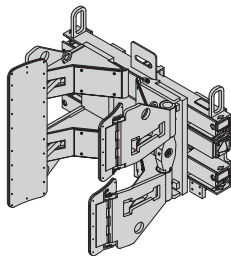
### KTR Series Tissue Paper Roll Clamps

- Flared arms and All-Grip pads avoid "bruising" soft tissue rolls
- Fixed short-arm models easily handle uniform roll diameters
- Positionable short-arm models for a wide range of roll diameters
- Up to 84" roll diameters; larger diameters available
- Position-controlled short arm movement



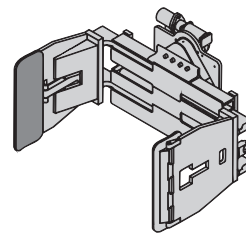
### SQ Sliding Arm Paper Roll Clamps

- For break-out in warehouses, trucks, and railcars
- Thin-arm profile over a wide range of roll diameters
- Ideal for use in confined areas, for tunneling and "T" loading
- Rotating and non-rotating models available



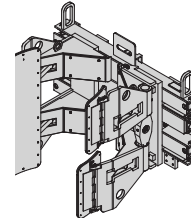
### Twin Pack™ Paper Roll Clamps

- Handles 1 or 2 rolls side-by-side
- Clean, grease-free handling — no lube arm slides
- Features ARPAD™ (Automatic Roll Positioning Arm Design)
- Internal sideshift improves maneuverability



### Quad Pack™ Paper Roll Clamps

- Handle 1, 2 or 4 rolls at a time with equal length split arms
- Clean, grease-free handling — no-lube arm slides
- Features ARPAD™ (Automatic Roll Positioning Arm Design)
- Internal sideshift improves maneuverability

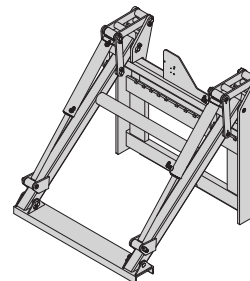


### All-In-One Pulp/Paper Clamps

- Interchangeable, slip-on arms for versatility
- Quad and Twin Pack configurations
- Handles pulp bales with pulp bale arms
- Clean, grease-free handling — no-lube arm slides

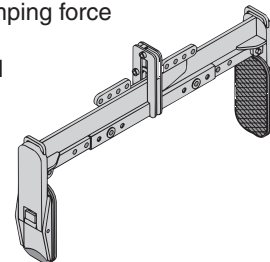
### Broke Paper Clamps

- Firmly grips and holds broke paper on forks while traveling
- Allows excellent operator visibility
- Arms extend fully out of the way to allow normal use of forks
- Quick-change lower hooks included



### RHC-65 Series Roll Head Clamps (Grappler)

- Positive lever arm clamping force applied to roll
- Adjustable roll ranges and clamping force
- Automatic latch and unlatch
- Flattened, expanded metal pad surface for sure grip



**Choose Long Reach for service, value, and custom design**

Multi-Pallet Handlers  
Fork Positioners  
Integral Carriages  
Paper Roll Clamps  
Lateral Clamps

Carton Clamps  
Push-Pulls  
Rotators  
Custom Design

21433 SW Oregon Street  
Sherwood, Oregon 97140-9799 USA  
Toll free: (800) 285-7000  
Phone: (503) 625-2560  
Fax: (503) 625-7269  
Email: [marketing@alliedsystems.com](mailto:marketing@alliedsystems.com)  
[www.alliedsystems.com/Longreach](http://www.alliedsystems.com/Longreach)

**LONG REACH®**  
A Division of Allied Systems Company