

WE-3 WATER EXTRACTOR PARTS MANUAL

SAFETY

Do not clean, lubricate, or make any adjustments on the equipment while it is in operation.

Do not start the equipment until you are certain everyone is clear of the machine and have ensured there are no tools on the unit.

Do not work around equipment in loose clothing.

Do not attempt to service any equipment while the motor is running.

Inspection Covers and Safety Shields should only be removed by authorized service persons.

After servicing do not place the equipment back into operation until all Safety Shields and Devices have been replaced. Operation without Safety Shields and Devices can place the operator into a hazardous situation.

Do not open or work on the In-Feed System until the flow of material has been stopped and the Water Extractor Motor has been turned off.

Do not make any adjustments or reach under any load bearing surfaces while they are loaded.

INSTRUCT ALL OPERATORS ON SAFETY PRECAUTIONS.



WARNING: Some illustrations in this parts list show the Water Extractor without shields to allow for a better view of the area being addressed. The Water Extractor should never be operated with any of the safety shields removed.

INTRODUCTION

HOW TO USE THE MANUAL

This manual contains illustrations and parts lists of components and assemblies which make up the machine. Each page consists of the name of the assembly or component, a reference number, part number, part name and the quantities of the part used.

Assembly or component names help identify the illustration and parts list for each figure. This name also helps locate the general area of the machine where the assembly or component can be located.

Reference numbers shown in a column refers to the numbered parts in the illustration. This ties the part in the illustration to the part number and description in the parts list. Part numbers are used to identify individual parts or part assemblies.

Part descriptions provide the name of the part, plus additional information such as dimensional specification and what parts are grouped together to form part assemblies, which helps you identify the parts.

Quantities listed for each illustration are only for that assembly or component and not the total used per machine.

Indent dots are used to indicate assemblies and sub-parts of assemblies. No dot indicates the major assembly. Part descriptions which are indented with dots are sub-parts of the major assembly shown above.

Parts pages will be revised as necessary to show the latest parts information. Revision information will be on the bottom of the page

This parts manual is not intended to be a complete guide for machine service or repairs. Contact your dealer for any of your service or technical requirements.

UPDATING AND REORDERING MANUALS

The parts lists, illustrations and specifications in this manual are based on the latest information available at the time of publication. Your machine may have product improvement and options not yet contained in this manual.

A copy of this manual is supplied with each machine. Additional copies are available through you dealer. When ordering additional manuals, use the reorder number listed on the front cover and the quantity needed.

SERIAL NUMBER LOCATION

Each Freeman Water Extractor is identified by means of a Water Extractor model and number. As for further identification, all power units are provided with a serial number.

To ensure prompt, efficient service when ordering parts or requesting repairs from your authorized Freeman dealer, record the serial numbers in the spaces provided.

WATER EXTRACTOR SERIAL NUMBER _____

ASC-OWE3-001

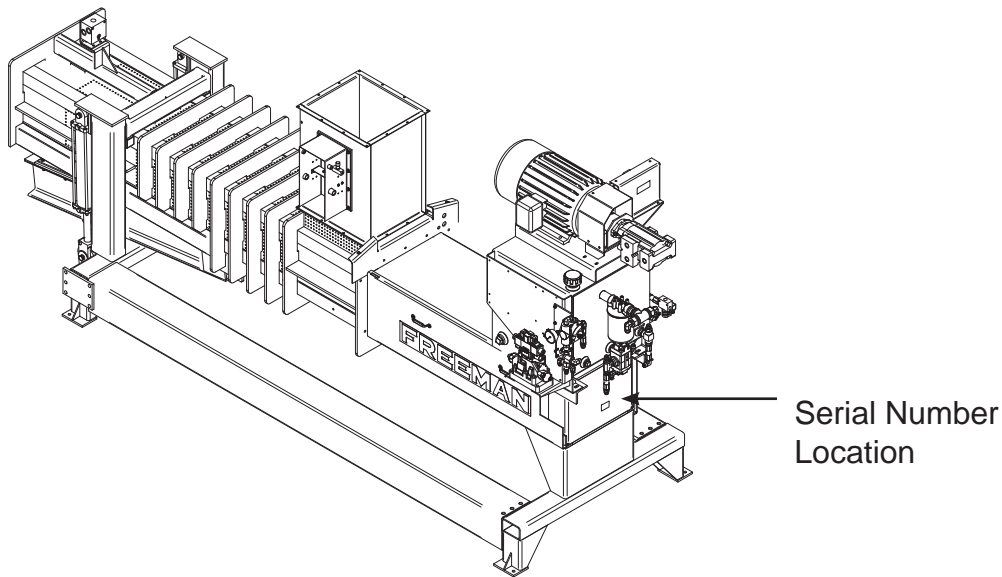
Front of baler frame under oil cooler.

POWER UNIT SERIAL NUMBER _____

Electric Motor- _____

Left side, near connection box.

NOTE: The motor and pump end is considered the front of the Water Extractor. The sides are described as left-hand side and right-hand side as viewed from behind while facing the discharge end of the Water Extractor.

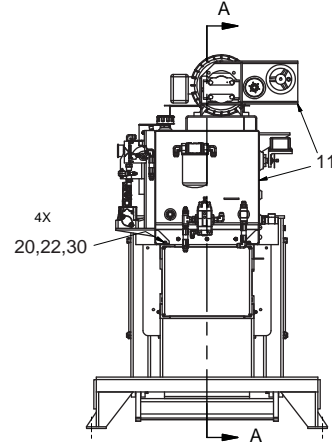
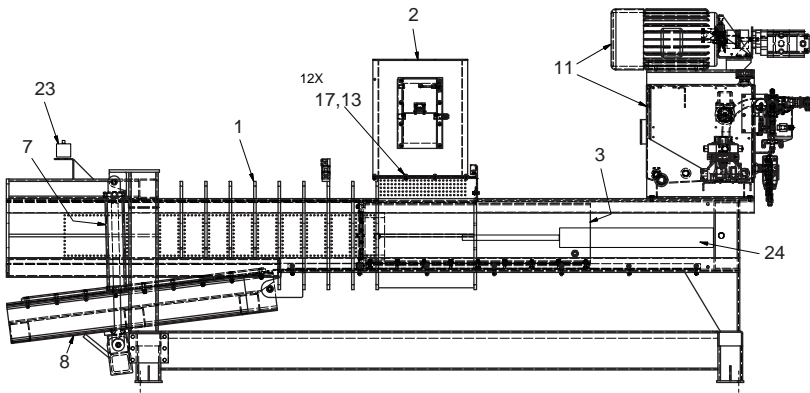


Serial Number: ASC-OWE3-001 Only

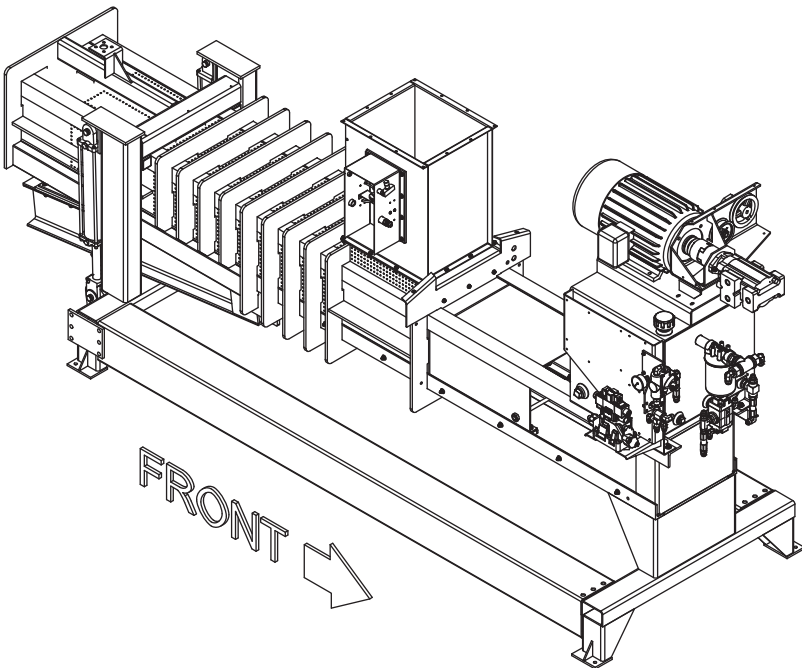
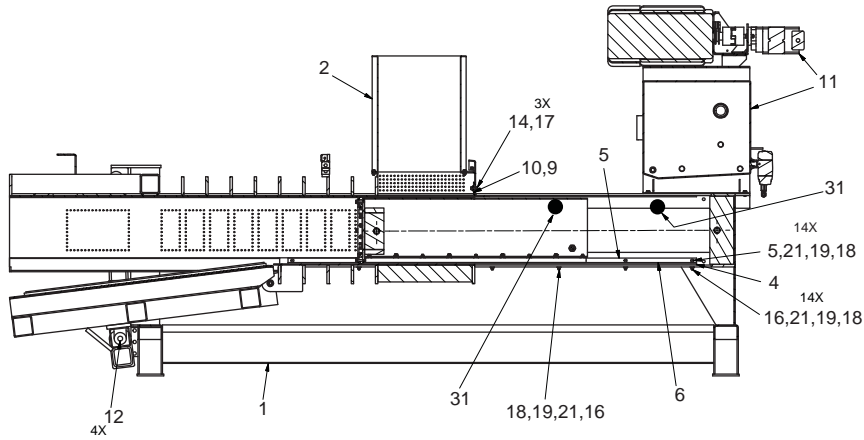
TABLE OF CONTENTS

WE3 Assembly	2
Infeed Chute.....	4
Tension Rail Assembly.....	6
Plunger Assembly	8
Restriction Cylinder	10
Plunger Cylinder.....	12
Tank Assembly.....	14
Junction Box.....	16
Control Box.....	18
Shields And Decals	20

WE3 ASSEMBLY



FRONT →

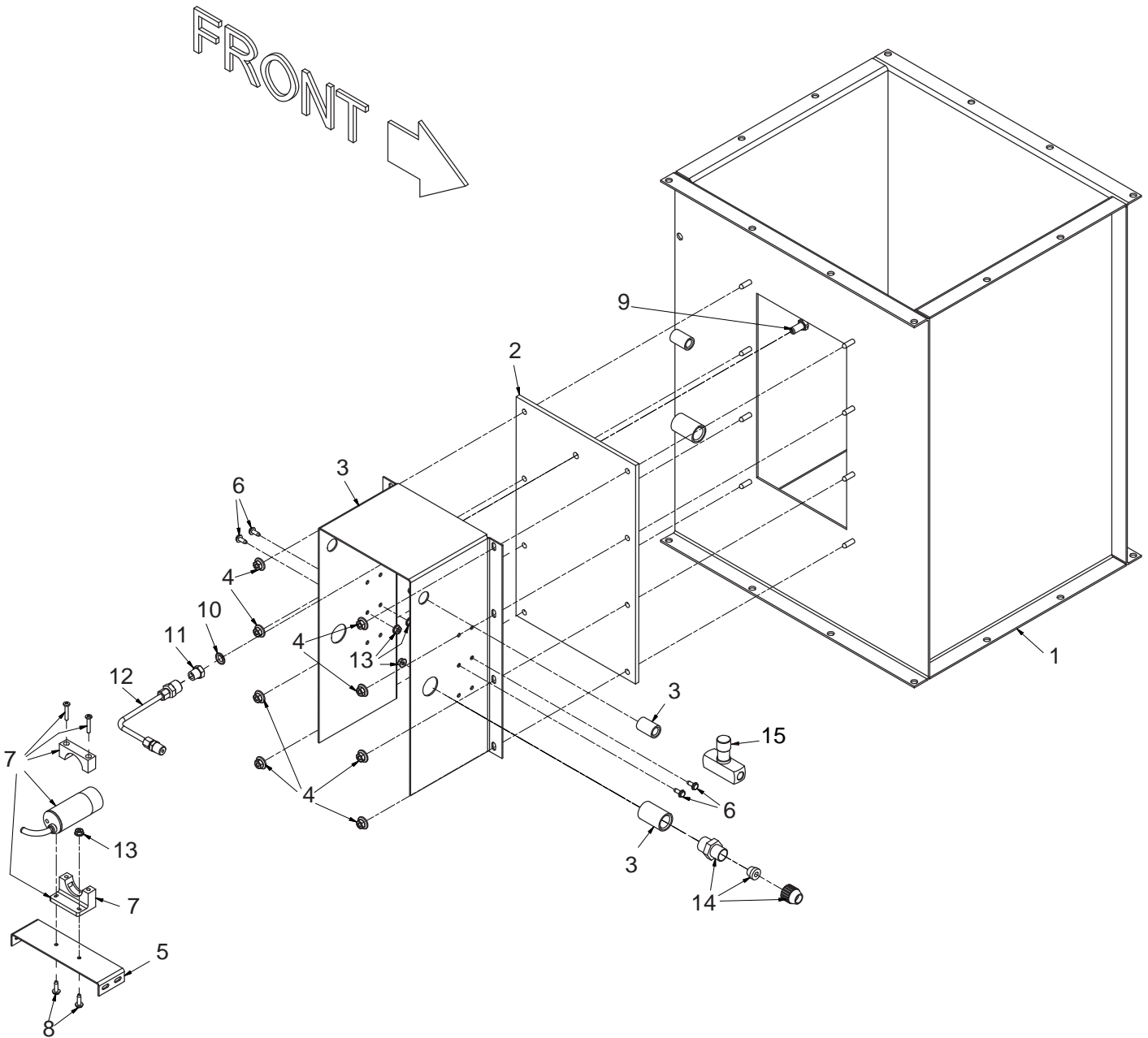


WE3 ASSEMBLY

REF NO.	PART NO.	DESCRIPTION	QTY. USED
1	FRM0032932	FRAME ASSEMBLY	1
2 *	903971	INFEED CHUTE ASSEMBLY	1
3**	PLG2592700	PLUNGER ASSEMBLY	2
4	PLG0015355	PLUNGER RAIL SPACER	2
5	PLG1535900	SIDE PLUNGER RAIL	2
6	PLG1535800	BOTTOM PLUNGER RAIL	2
7***	254185	RESTRICTOR RAIL CYLINDER	2
8A	TNS2597400	TENSION RAIL ASSEMBLY	1
9	PLG1552500	CHUTE SEAL BACKUP PLATE	1
10	PLG0015524	CHUTE SEAL	1
11B	-----	HYDRAULIC TANK ASSEMBLY	1
12	CYL0181106	PIN	4
13	00273802	WHIZ NUT	12
14	Y09G-0516	CAPSCREW	3
15	Y09G-0520	CAPSCREW	14
16	Y09G-0524	CAPSCREW	14
17	00273802	NUT, SERRATED	15
18	221705W	NUT, HEX	28
19	R13802621	WASHER, FLAT	28
20	R13802623	WASHER, FLAT	4
21	R13812513	WASHER, LOCK	29
22	234135	WASHER, LOCK	4
23	253308	UNLOADER VALVE	1
	254205	. MANIFOLD	1
	254206	. CARTRIDGE	1
	2501643	. SEAL KIT F/254206	1
24C	CYL0003362	MAIN CYLINDER	1
	SEL0003362	SEAL KIT	1
30	R13811034	CAPSCREW	1
31	244112	SWITCH, PROXIMITY	2

- * SEE PAGE 4
- ** SEE PAGE 8
- *** SEE PAGE 10
- A SEE PAGE 6
- B SEE PAGE 14
- C SEE PAGE 12

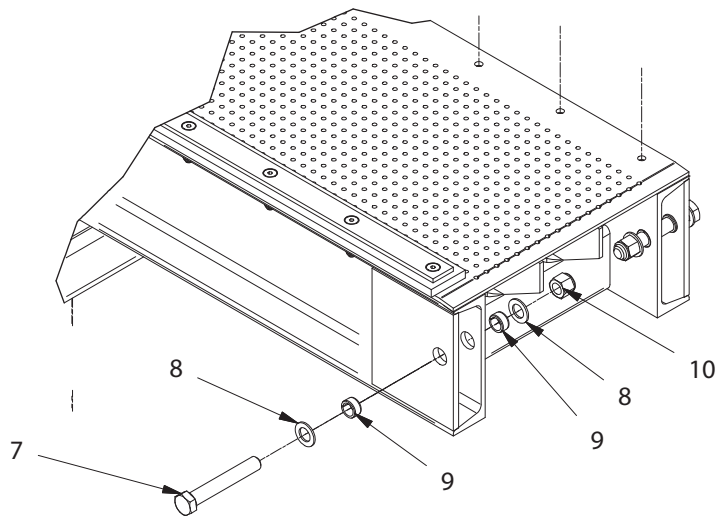
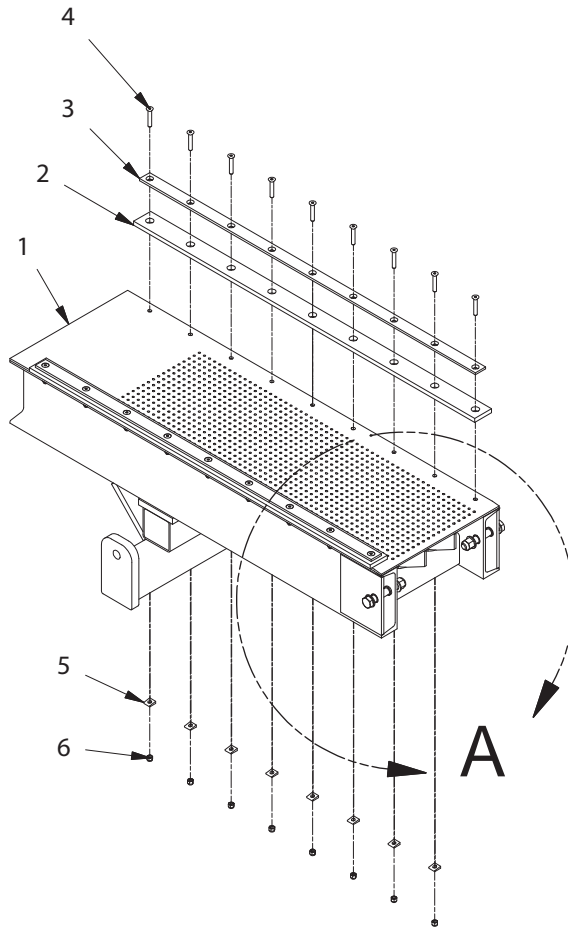
INFEED CHUTE



INFEED CHUTE

REF NO.	PART NO.	DESCRIPTION	QTY. USED
	903971	INFEED CHUTE	
1	CHU2397200	. INFEED MOUNT CHUTE	1
2	WIN0026117	. WINDOW, INFEED CHUTE	1
3	BKT0026116	. SENSOR MOUNTING BRACKET ASSY	1
4	09416918	. WHIZ NUT,	8
5	BKT0023959	. SENSOR MOUNTING BRACKET	1
6	230640	. MACH SCREW	4
7	254163	. LEVEL DETECTOR, 24V	1
8	00109451	. MACH SCREW	2
9	VLV0026113	. SENSOR WINDOW CLEANER TIP	1
10	204389	. SEAL	1
11	BSH0026123	. FITTING	1
12	TBE0261300	. SENSOR WINDOW CLNR TUBE	1
13	220044	. NUT, HEX	6
14	27663	. CORD CONNECTOR	1
15	VLV0000400	. 1/4" NEEDLE VALVE	1

TENSION RAIL ASSEMBLY

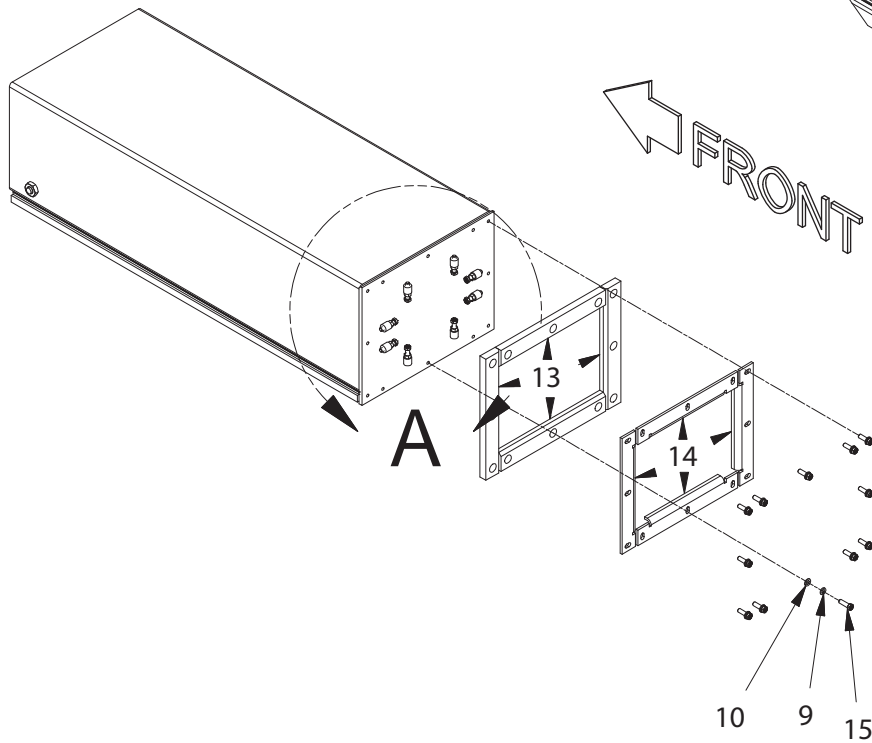
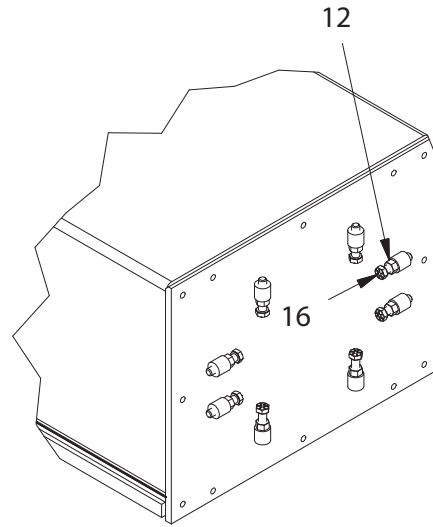
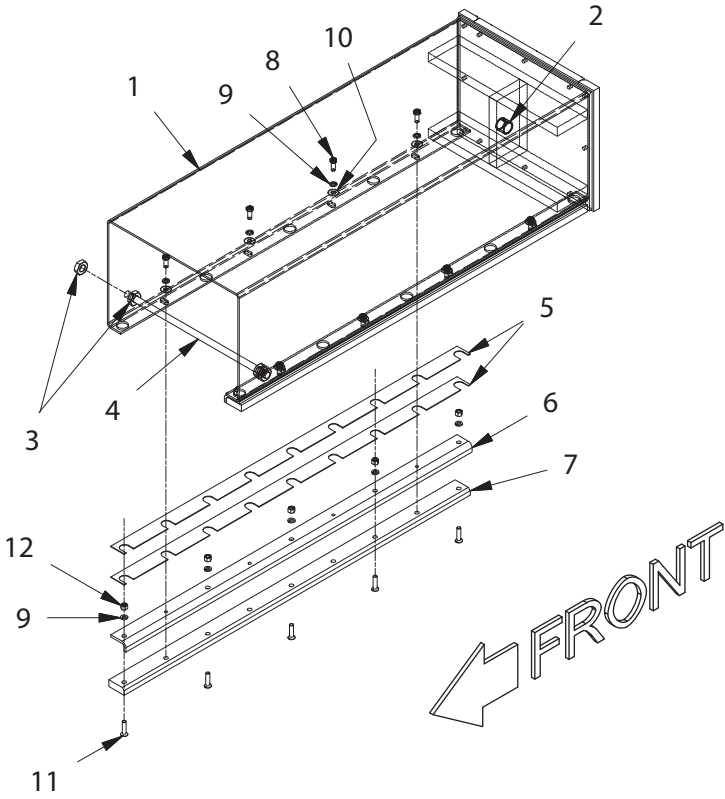


DETAIL A

TENSION RAIL ASSEMBLY

REF NO.	PART NO.	DESCRIPTION	QTY. USED
	TNS2597400	RESTRICTOR RAIL ASSEMBLY	
1	TNS0025974	. RESTRICTION RAIL	1
2	WIP0021095	. TENSION RAIL WIPER	2
3	WIP2105400	. WIPER SUPPORT	2
4	SCOS000312	. FLAT HD SOC (SS)	18
5	WAS0000143	. 3/8" MALLEABLE BEVEL WASHER	18
6	231851	. NUT, ESNA; NC (SS)	18
7	237642	. CAPSCREW; (SS)	2
8	234173	. WASHER, FLAT; (SS)	4
9	BSH00VG275	. BUSHING	2
10	233852	. NUT, ESNA; NC (SS)	2

PLUNGER ASSEMBLY

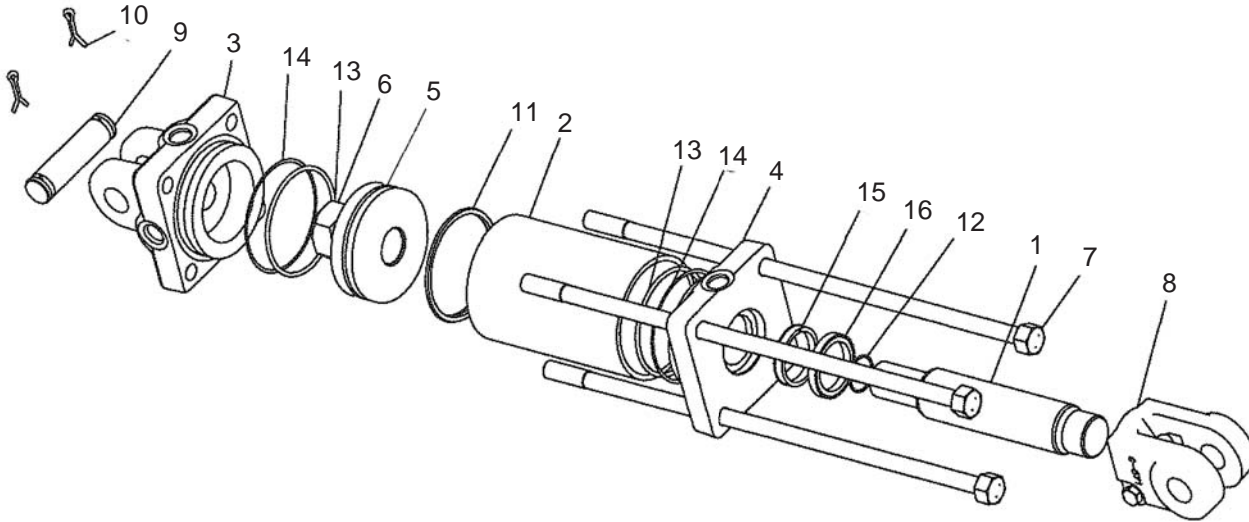


DETAIL A

PLUNGER ASSEMBLY

REF NO.	PART NO.	DESCRIPTION	QTY. USED
	PLG2592700	PLUNGER ASSEMBLY WE3 A36	
1	PLG0025927	. PLUNGER	1
2	BSH00VG400	. BUSHING	1
3	R3809570	. JAM NUT	4
4	PLG0015509	. ROD	1
5	PLG0015389	. SHIM	4
6	PLG1538800	. BACKUP BAR	2
7	PLG0015390	. BAR,SLIDE	2
8	233854	. CAPSCREW (SS)	8
9	233569	. WASHER, LOCK	30
10	231853	. WASHER, FLAT	8
11	SMFS000304	. SCREW, FLAT HEAD (SS)	10
12	NCHS000375	. NUT, HEX (SS)	22
13	PLG0015391	. WIPER	4
14	PLG1539300	. WIPER PLATE	4
15	233465	. CAPSCREW (SS)	12
16	00446882	. CAPSCREW (SS)	8

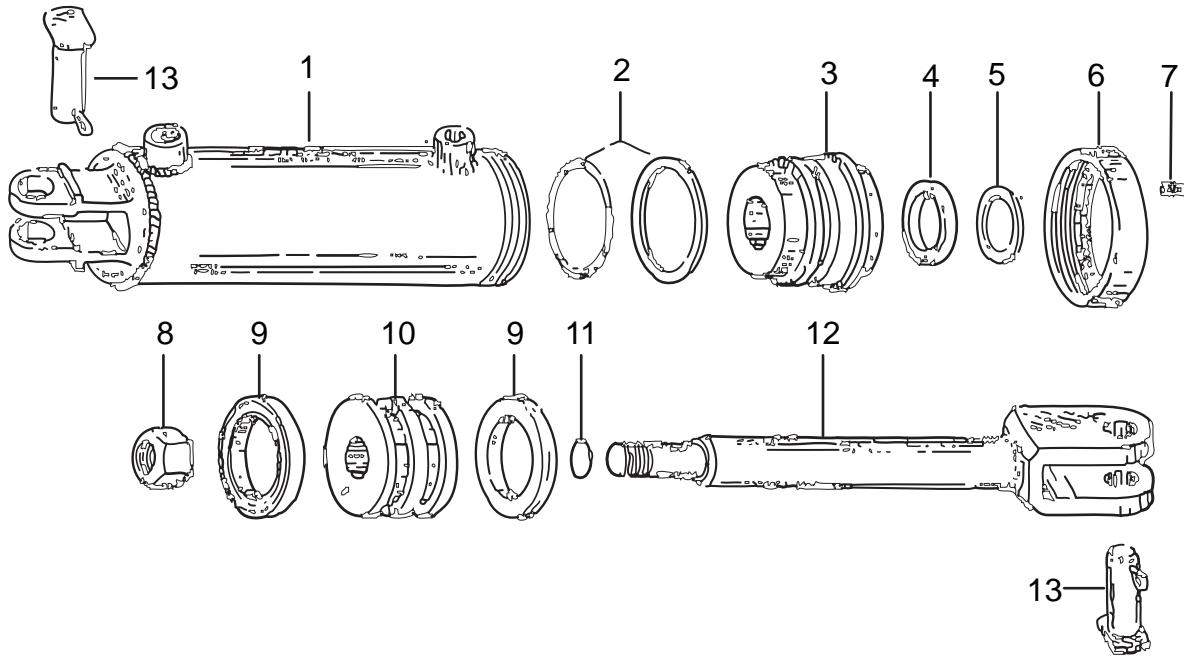
RESTRICTION CYLINDER



RESTRICTION CYLINDER

REF NO.	PART NO.	DESCRIPTION	QTY. USED
	254185	CYLINDER ASSEMBLY (3000PSI)	
1	258261	. PISTON ROD	1
2	258262	. TUBE	1
3	258262	. CYLINDER CAP	1
4	258262	. CYLINDER CAP, ROD END	1
5	258262	. PISTON	1
6	258262	. LOCKNUT	1
7	258268	. TIE-ROD ASSEMBLY	4
8	258268	. CLEVIS ASSEMBLY	1
9	258269	. CLEVIS PIN	2
10	258270	. COTTER PIN	2
11*	258271	. CROWN SEAL	1
12*	258272	. O-RING	1
13*	258273	. O-RING	2
14*	258274	. BACK UP WASHER	2
15*	258275	. U-CUP	1
16*	258276	. WIPER	1
	* 258277	SEAL KIT	

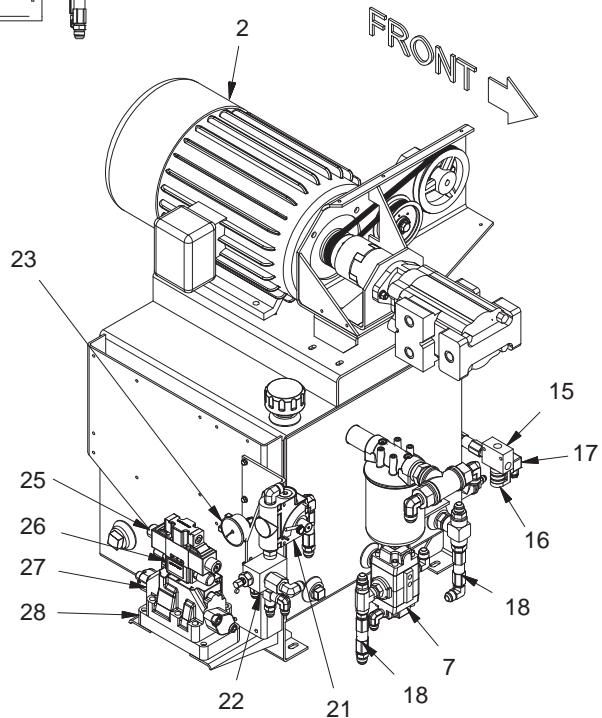
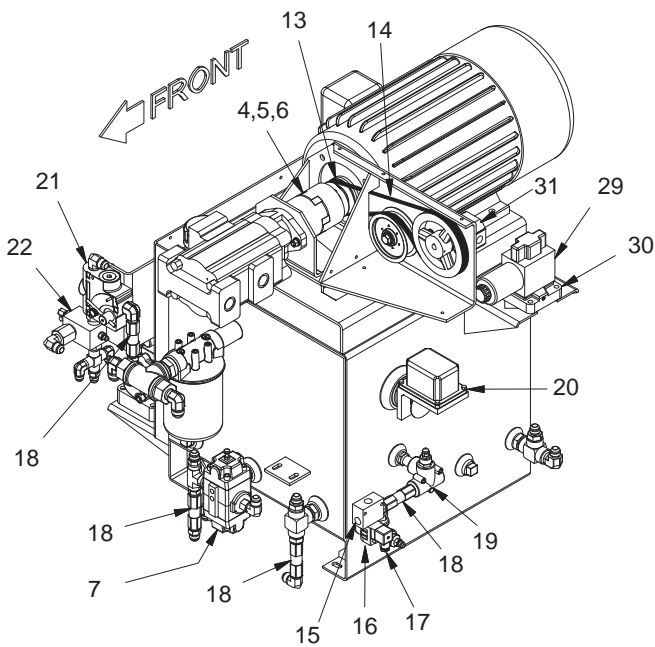
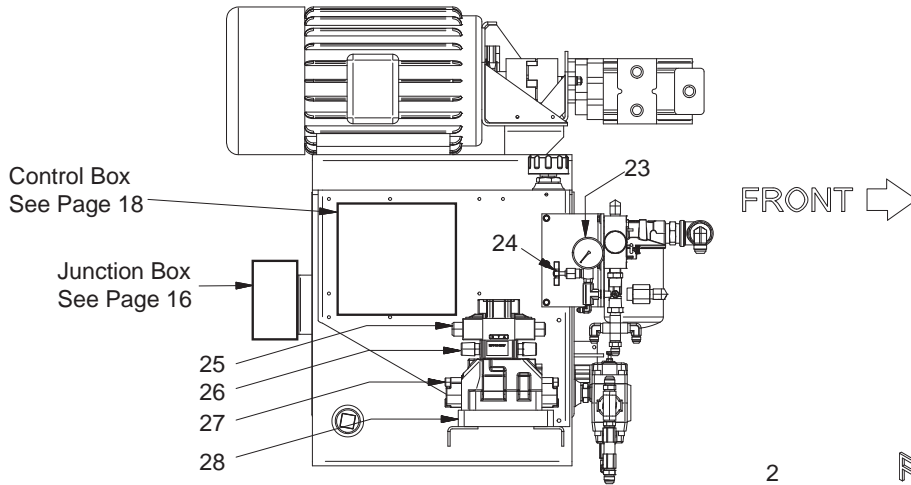
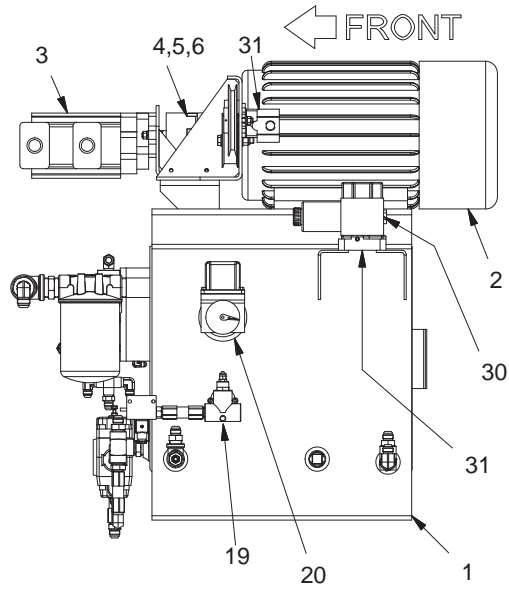
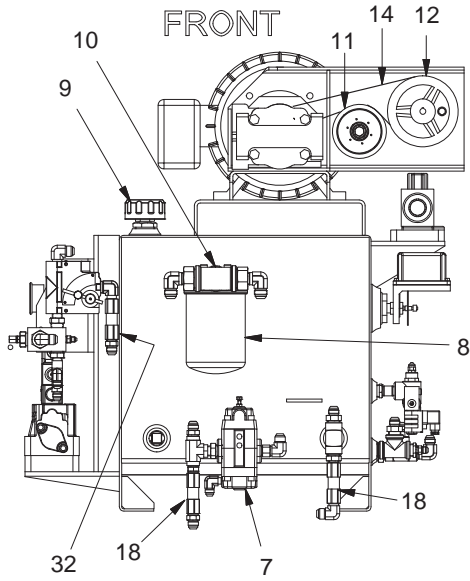
PLUNGER CYLINDER



PLUNGER CYLINDER

REF NO.	PART NO.	DESCRIPTION	QTY. USED
	CYL0003362	MAIN CYLINDER	
1	258340	. TUBE ASSEMBLY	1
2 *	258348	. HEAD O-RING AND BACK UP RING	1
3	258341	. HEAD	1
4 *	258349	. SHAFT PACKING	1
5 *	258350	. ROD WIPER	1
6	258342	. ENDCAP	1
7	258343	. SET SCREW	4
8	258344	. PISTON LOCK NUT	1
9 *	258351	. PISTON PACKING	2
10	258345	. PISTON	1
11*	258352	. SMALL O-RING	1
12	258346	. SHAFT ASSEMBLY	2
13	258347	. CLEVIS PIN	2
	* SEL0003362	SEAL KIT	

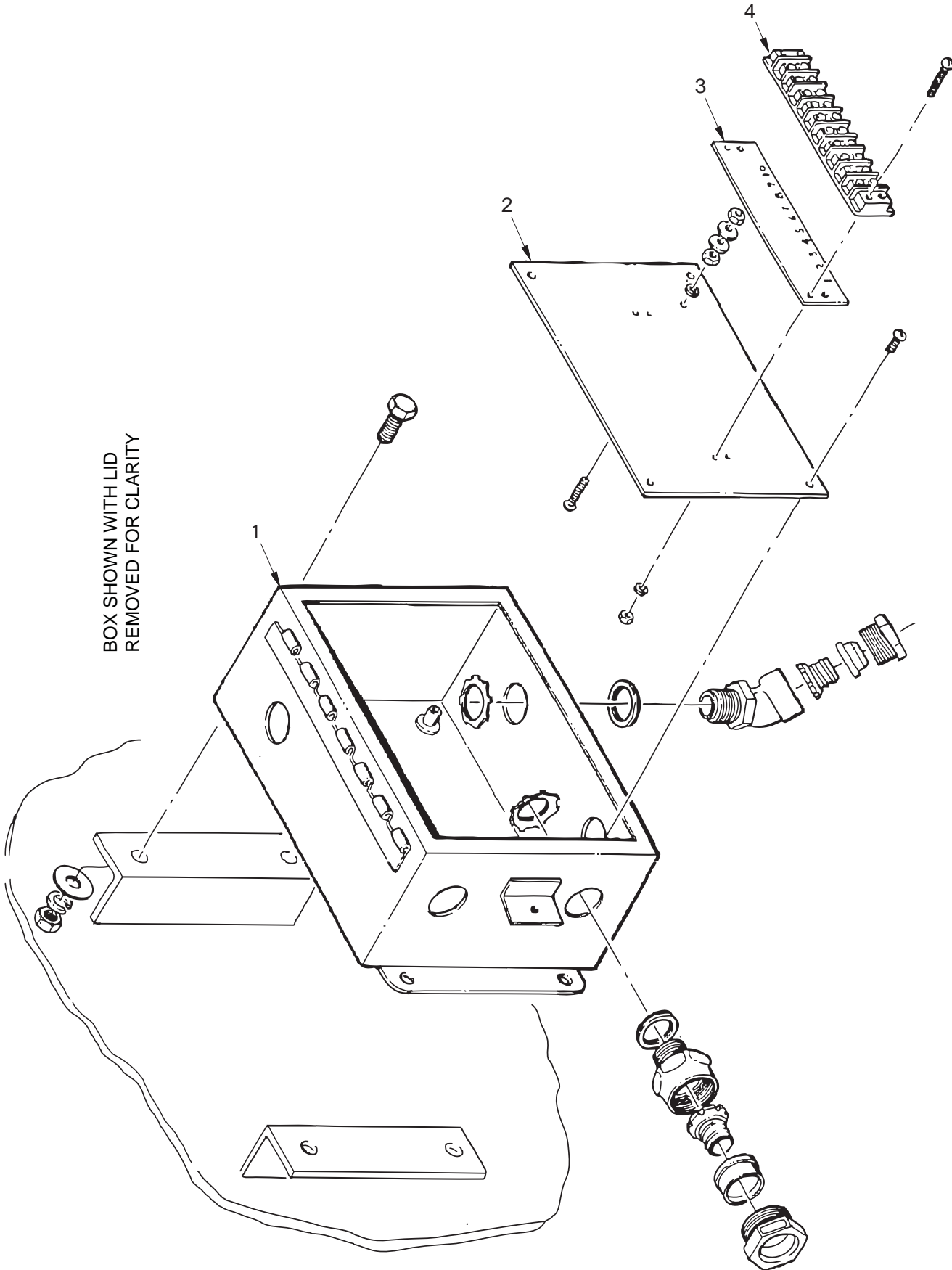
TANK ASSEMBLY



TANK ASSEMBLY

REF NO.	PART NO.	DESCRIPTION	QTY. USED	REF NO.	PART NO.	DESCRIPTION	QTY. USED
1	TNK0022416	HYDRAULIC TANK	1	20	SWI0059037	SWITCH, FLOAT	1
2	MTR0010013	MOTOR,ELECTRIC-15HP 1800RPM	1	21	01-521	VALVE, FLOW CONTROL	1
3	PMP3000383	PUMP-DOUBLE	1	22	VLV0003500	VALVE, RELIEF	1
4	CPL0015002	3/4 HUB COUPLER G1500	1		254212	. BODY	1
5	CPL0015003	SPIDER COUPLING	1		254213	. CARTRIDGE	1
6	CPL0015005	1-5/8 HUB COUPLER	1		233969	. SEAL KIT F/254213	1
7	VLV0006324	UNLOADER VALVE PILOT	1	23	GAG0002113	GAUGE	4
	258325	. SEAL KIT F/VLV0006324	1	24	258324	VALVE	1
8	FIL0023018	ELEMENT, FILTER	1	25	258316	PILOT VALVE	1
9	FT00000530	FILLER BREATHER	1		258317	. SEAL KIT F/258316	1
10	FIL0120000	HEAD, FILTER	1	26	VLV00Z2FS6	CHOKE VALVE	1
11	PUL0810601	IDLER PULLEY	1		254211	. SEAL KIT F/VLV00Z2FS6	1
12	PUL0000615	PULLEY	1	27	258318	MAIN VALVE	1
13	PUL0785101	PULLEY	1		258319	. SEAL KIT F/258318	1
14	BLT0000038	BELT	1	28	VLV0431242	SUBPLATE	1
15	VLV0022295	VALVE BODY	1	29	254207	ANTI PLUG VALVE	1
16	254210	CARTRIDGE WITH COIL	1		254148	. COIL	1
	VLV2229500	. CARTRIDGE	1		254208	. SPOOL	1
	254145	. COIL	1		254150	. COIL SIDE SPRING	1
	258329	. SEAL KIT F/VLV2229500	1		254149	. END CAP SIDE SPRING	1
17	244430	DIN	1		258320	. SEAL KIT F/254207	1
18	F000006657	CHECK VALVE-5 PSI	3	30	VLV0000765	SUBPLATE	1
19	VLV00RD11B	CROSS 1/2" RELIEF VLV/1000 PSI	1	31	PMP0022226	TENSION PUMP	1
				32	VLV0050065	CHECK VALVE 65 PSI	1

JUNCTION BOX



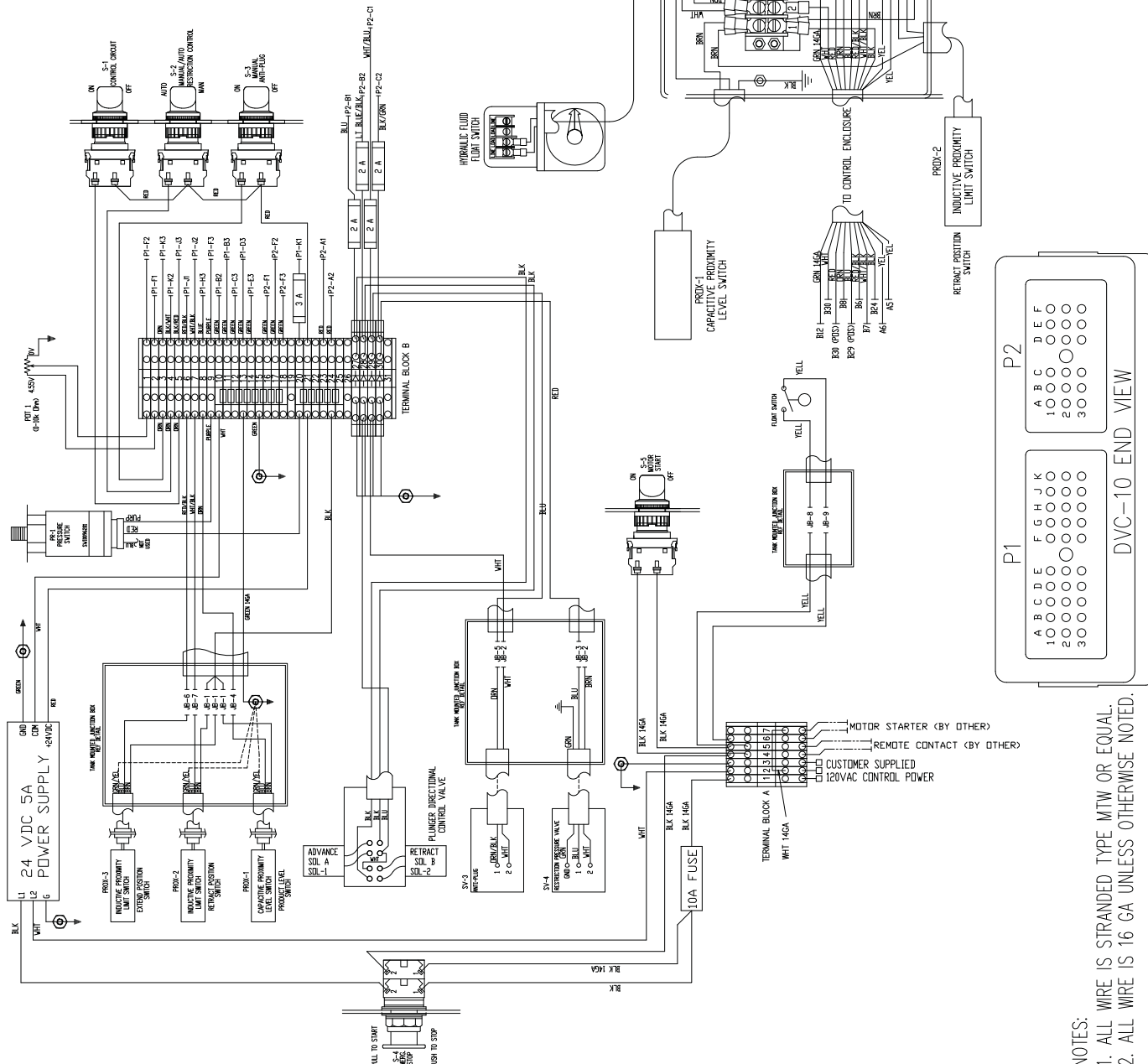
JUNCTION BOX

REF NO.	PART NO.	DESCRIPTION	QTY. USED
	ELC2459700	JUNCTION BOX ELECTRICAL GROUP	
1	BOX0030145	. JUNCTION BOX	1
2	PNL0024594	. JUNCTION BOX PANEL	1
3	MSR0010140	. MARKER STRIP 10 POST	1
4	BAB0010140	. BARRIER BLOCK 10 POST	1

CONTROL BOX

DVC-10 PIN-OUTS

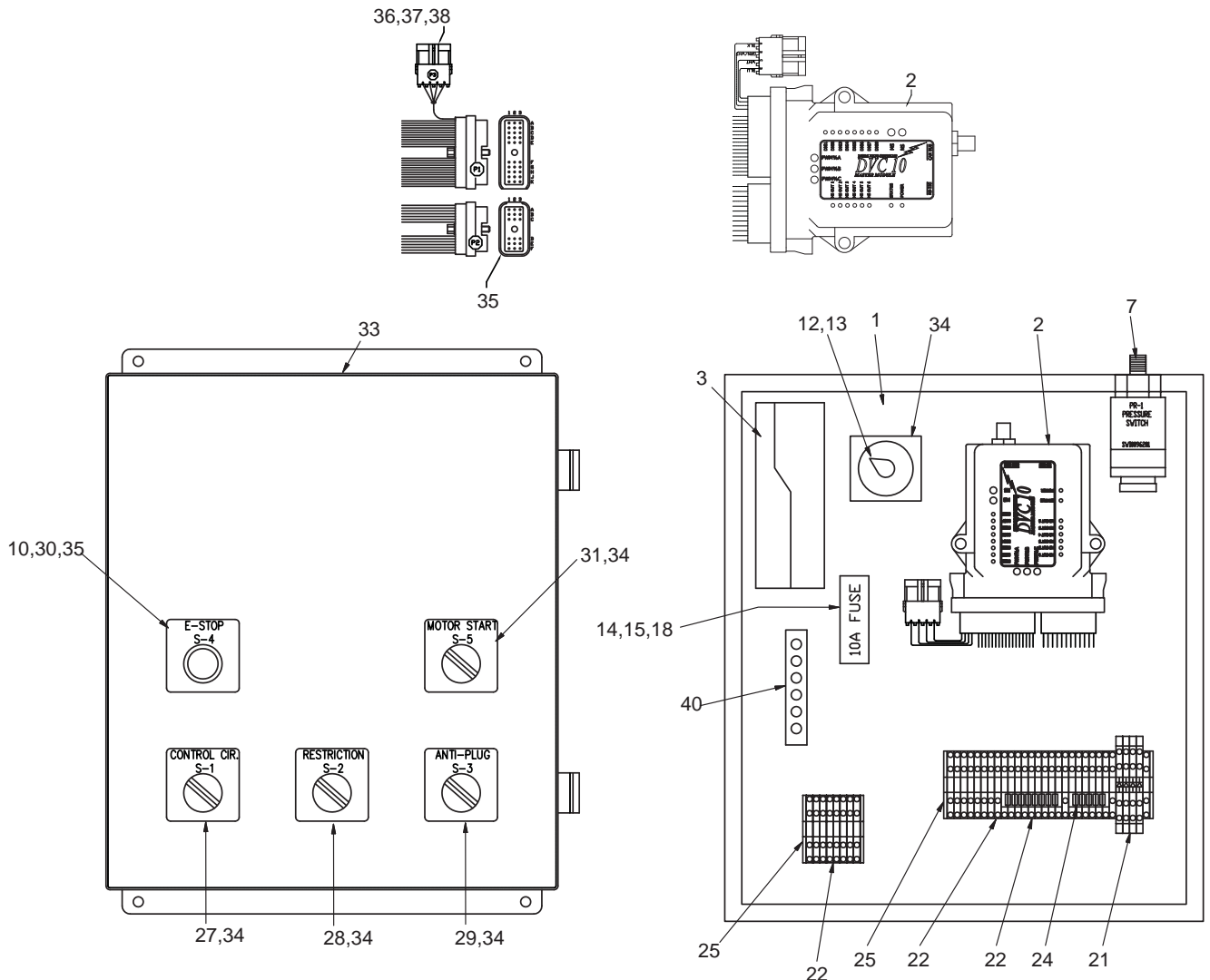
PIN	OUT	FUNCTION	DESTINY
P1-A1	NO	PROGRAMMING CONNECTOR	TO 4-TERM. PROGRAMMING CONNECTOR
P1-A2	NO	PROGRAMMING CONNECTOR	TO 4-TERM. PROGRAMMING CONNECTOR
P1-A3	NO	PROGRAMMING CONNECTOR	TO 4-TERM. PROGRAMMING CONNECTOR
P1-B1	NO	COMMON	TO GROUND STUD
P1-B2	NO	COMMON	TO GROUND STUD
P1-C1	NO	UNV. 1 POT REF	TO GROUND STUD
P1-C2	NO	UNV. 2 POT REF	TO GROUND STUD
P1-C3	NO	UNV. 3 POT REF	TO GROUND STUD
P1-E1	NO	UNV. 1 INPT	TO GROUND STUD
P1-E2	NO	UNV. 2 INPT	TO GROUND STUD
P1-E3	NO	UNV. 3 INPT	TO GROUND STUD
P1-F1	NO	ANALOG R.1	TO GROUND STUD
P1-F2	NO	ANALOG R.1	TO GROUND STUD
P1-F3	NO	ANALOG R.1	TO GROUND STUD
P1-G1	NO	ANALOG R.2	TO GROUND STUD
P1-G2	NO	ANALOG R.2	TO GROUND STUD
P1-G3	NO	ANALOG R.2	TO GROUND STUD
P1-H1	NO	ANALOG R.3 POT REF	TO GROUND STUD
P1-H2	NO	ANALOG R.3 POT REF	TO GROUND STUD
P1-H3	NO	ANALOG R.3 POT REF	TO GROUND STUD
P1-I1	NO	PLUNGER POS. - P15	TO GROUND STUD
P1-I2	NO	PLUNGER POS. - P15	TO GROUND STUD
P1-I3	NO	PLUNGER POS. - P15	TO GROUND STUD
P1-J1	NO	COIL START (S100)	TO GROUND STUD
P1-J2	NO	COIL START (S100)	TO GROUND STUD
P1-J3	NO	COIL START (S100)	TO GROUND STUD
P1-K1	NO	POWER IN	TO GROUND STUD
P1-K2	NO	POWER IN	TO GROUND STUD
P1-K3	NO	POWER IN	TO GROUND STUD
P1-L1	NO	ANTIFLUG (S10)	TO GROUND STUD
P1-L2	NO	ANTIFLUG (S10)	TO GROUND STUD
P1-L3	NO	ANTIFLUG (S10)	TO GROUND STUD
P1-M1	NO	POWER IN	TO GROUND STUD
P1-M2	NO	POWER IN	TO GROUND STUD
P1-M3	NO <td POWER IN	TO GROUND STUD	
P1-N1	NO	POWER IN	TO GROUND STUD
P1-N2	NO	POWER IN	TO GROUND STUD
P1-N3	NO	POWER IN	TO GROUND STUD
P1-O1	NO	POWER IN	TO GROUND STUD
P1-O2	NO	POWER IN	TO GROUND STUD
P1-O3	NO	POWER IN	TO GROUND STUD
P1-P1	NO	POWER IN	TO GROUND STUD
P1-P2	NO	POWER IN	TO GROUND STUD
P1-P3	NO	POWER IN	TO GROUND STUD
P1-Q1	NO	POWER IN	TO GROUND STUD
P1-Q2	NO	POWER IN	TO GROUND STUD
P1-Q3	NO	POWER IN	TO GROUND STUD
P1-R1	NO	POWER IN	TO GROUND STUD
P1-R2	NO	POWER IN	TO GROUND STUD
P1-R3	NO	POWER IN	TO GROUND STUD
P1-S1	NO	POWER IN	TO GROUND STUD
P1-S2	NO	POWER IN	TO GROUND STUD
P1-S3	NO	POWER IN	TO GROUND STUD
P1-T1	NO	POWER IN	TO GROUND STUD
P1-T2	NO	POWER IN	TO GROUND STUD
P1-T3	NO	POWER IN	TO GROUND STUD
P1-U1	NO	POWER IN	TO GROUND STUD
P1-U2	NO	POWER IN	TO GROUND STUD
P1-U3	NO	POWER IN	TO GROUND STUD
P1-V1	NO	POWER IN	TO GROUND STUD
P1-V2	NO	POWER IN	TO GROUND STUD
P1-V3	NO	POWER IN	TO GROUND STUD
P1-W1	NO	POWER IN	TO GROUND STUD
P1-W2	NO	POWER IN	TO GROUND STUD
P1-W3	NO	POWER IN	TO GROUND STUD
P1-X1	NO	POWER IN	TO GROUND STUD
P1-X2	NO	POWER IN	TO GROUND STUD
P1-X3	NO	POWER IN	TO GROUND STUD
P1-Y1	NO	POWER IN	TO GROUND STUD
P1-Y2	NO	POWER IN	TO GROUND STUD
P1-Y3	NO	POWER IN	TO GROUND STUD
P1-Z1	NO	POWER IN	TO GROUND STUD
P1-Z2	NO	POWER IN	TO GROUND STUD
P1-Z3	NO	POWER IN	TO GROUND STUD



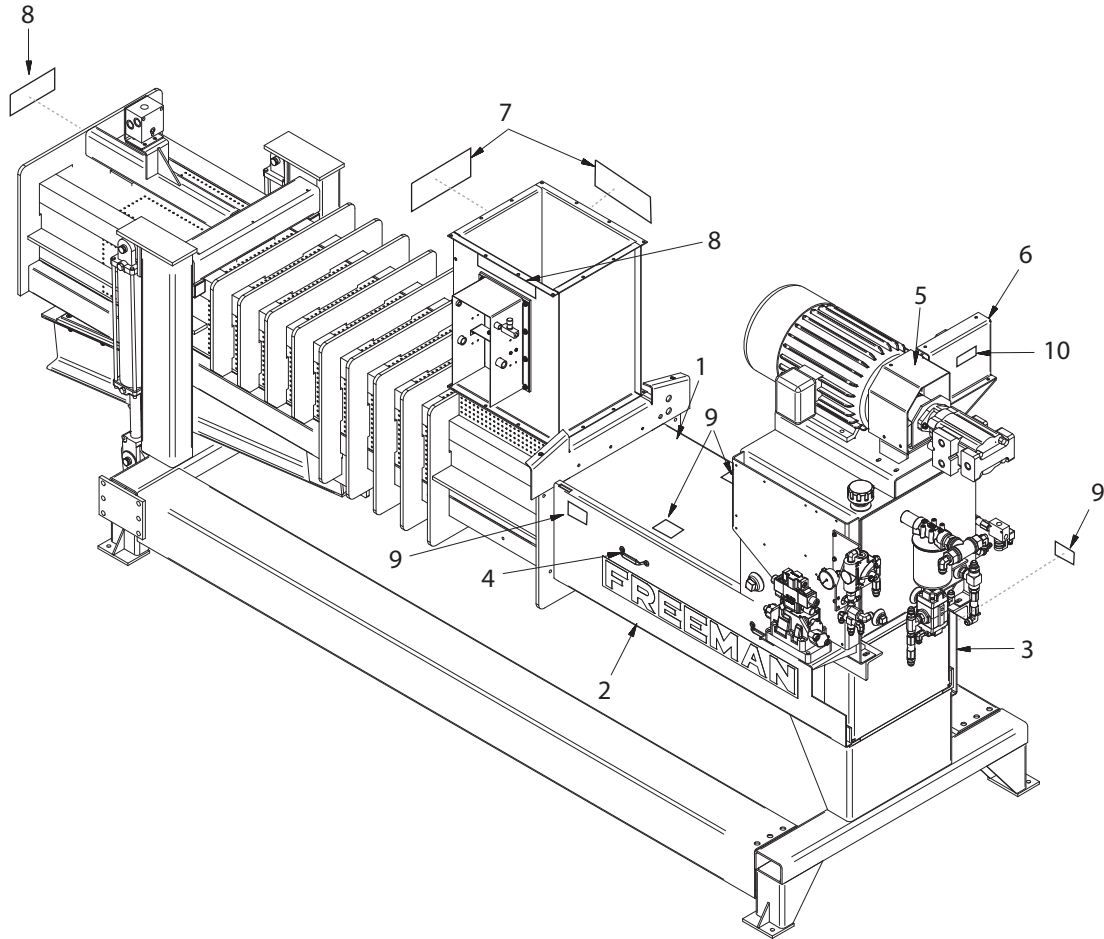
NOTES:
 1. ALL WIRE IS STRANDED TYPE MTW OR EQUAL.
 2. ALL WIRE IS 16 GA UNLESS OTHERWISE NOTED.

CONTROL BOX

REF NO.	PART NO.	DESCRIPTION	QTY. USED	REF NO.	PART NO.	DESCRIPTION	QTY. USED
	902229	CONTROL PANEL ASSEMBLY WE-3		18	241791	FUSE 10A	1
1	28286	BACK PANEL	1	21	247209	DIODE TERMINAL BLOCK	4
2	902230	PROGRAMMED MOD CONTROLLER	1	22	239317	TERMINAL BLOCK	19
3	254146	POWER SUPPLY 24 V DC, 5 A	1	24	232239	JUMPER	13
7	SWI0096201	ADJUSTABLE PRESSURE SWITCH	1	25	232238	PLATE END	3
8	241309	2 POS SWITCH	4	27	901768	DECAL, CONTROL CIRCUIT	1
9	245511	OPERATOR, PUSH-PULL	1	28	901769	DECAL, RESTRICTION	1
10	245512	BUTTON; EMERGENCY STOP, RED	1	29	901770	DECAL, ANTI PLUG	1
12	ELC7531010	POTENTIOMETER	1	30	901771	DECAL, EMERGENCY STOP	1
13	KOB0001P2B	POTENTIOMETER KNOB	1	31	901772	DECAL, MOTOR START	1
14	17511	FUSE HOLDER (SURFACE MOUNT)	1	33	902228	WE3 ENCLOSURE	1
15	20313	FUSE HOLDER COVER	1	34	256203	2 POS SEL SW MAINT	4
				35	256204	EM STOP PUSH/PULL MAINT	1



SHIELDS AND DECALS



SHIELDS AND DECALS

REF NO.	PART NO.	DESCRIPTION	QTY. USED
1	SHD0025941	PLUNGER, TOP SHIELD	1
2	SHD0025922	PLUNGER, RH FRONT SHIELD	1
3	SHD0025921	PLUNGER, LH FRONT SHIELD	1
4	HAN0000150	HANDLE, DOOR	2
5	SHD0022413	COUPLER, SHIELD	1
6	SHD0022412	PULLY, SHIELD	1
7	FD00023574	DECAL; ..DANGER! KEEP AWAY	2
8	FD00023582	DECAL; "WARNING! KEEP HANDS AW."	2
9	FD00023534	DECAL; "KEEP SHIELDS IN PLACE..."	4
10	FD00023572	DIODE TERMINAL BLOCK	4



To find a dealer in your area,
Call: 503-625-2560
Fax: 503-625-7269

Visit our website: <http://www.alliedsystems.com>

Allied Systems
C O M P A N Y

PB0WE32006 11/10
Printed in USA