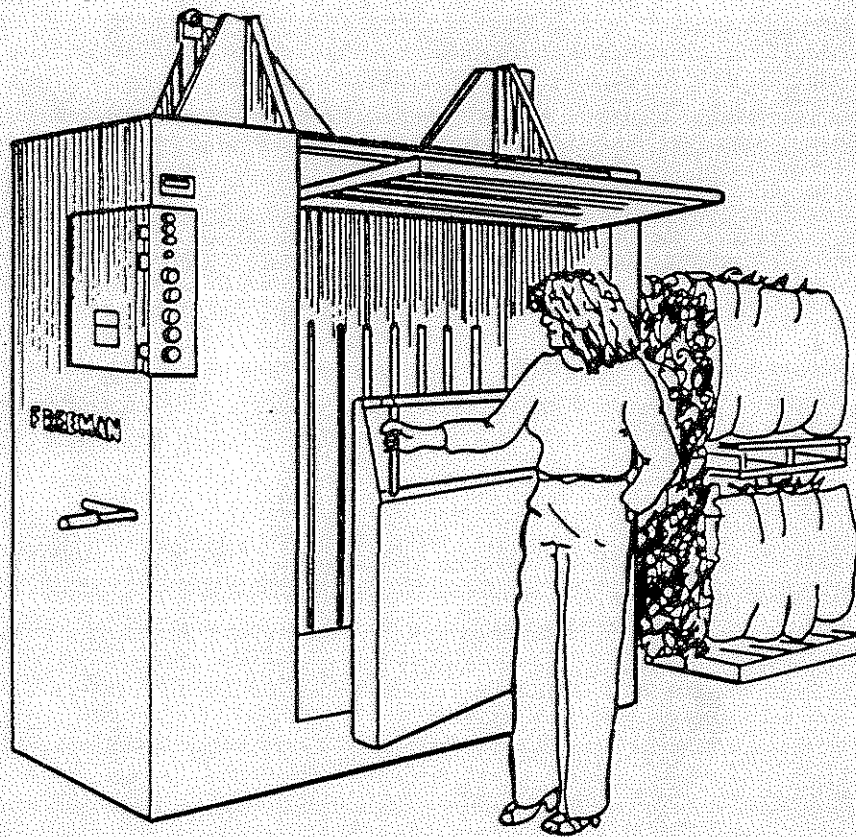


FREEMAN

LOW PROFILE WASTE BALER MODEL 3048L4

889 PARTS LIST



manufactured and distributed by

J. A. FREEMAN & SON, INC.

INSTRUCTIONS FOR ORDERING PARTS

1. Order by part number and description of part.
 - (a) Parts should NOT be ordered from illustration only.
 - (b) Parts should NOT be ordered from numbers on castings.
2. Order by WASTE BALER serial number and model.
3. Much delay and confusion can be avoided if parts numbers are arranged in sequence on all orders.
4. State how to ship: whether by truck, stage, parcel post, air parcel post, UPS, or air freight.
5. Claims for shortage or error in handling of an order for parts must be made upon receipt of goods.
6. Address all orders for parts as follows:

J.A. Freeman & Son, Inc.
Parts Department,
2034 N.W. 27th Avenue,
Portland, Oregon 97210

Place serial number of machine here for your convenience:

WASTE BALER Serial No. _____

Motor Serial No. _____

Right side of machine is understood to be the Control Box side.

Permission must be secured before any parts are returned for credit. When parts are returned, the freight must be prepaid or arrangements made so that they can be brought in by our trucks.

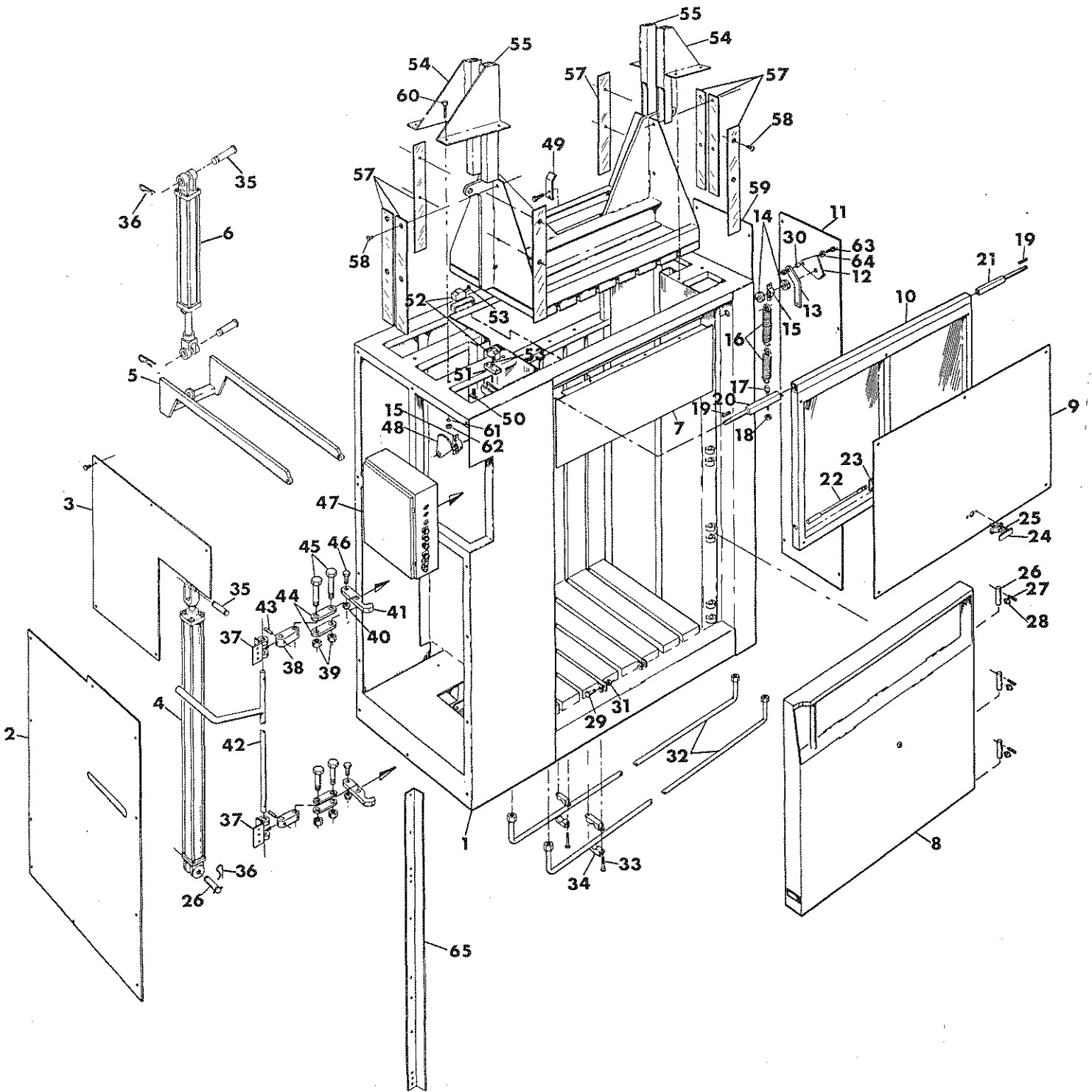
"NOTE"

Parts are identified by reference numbers. See parts list for correct part numbers. DO NOT USE REFERENCE NUMBERS AS PART NUMBERS.

INDEX

PART	PAGES	PART	PAGES
01-513	4	HY03109064	4
01-633	4	HY03109076	4
01-634	4	HYD3309060	4
01-635	4	HYD3409040	4
06-106	2	HYD3409060	4
ARM0005084	2,6	HYD3709030	4
BAB0014140	8	HYD3709040	4
BLK0005004	8	HYD3959040	4
BLK0005041	8	HYD3959060	4
BOX0015038	2,6,8	HYD5205023	4
BOX0020500	6	HYD5205024	4
BRG0000016	2	HYD5205040	4
BRG0000088	2	HYD5205044	4
BSH0020051	6	HYD5205053	4
CAM0016575	2	HYD5205060	4
CDU0023060	6	HYD5325030	4
CDU0023062	6	HYD5355033	4
CDU0023063	6	HYD5405022	4
CDU0023064	6	HYD5924030	4
CDU0023065	6	LEV0017838	2
CLP0000007	4	LNK0020888	2
CLP0031901	4	LOK0000110	2
CNR0000111	6	LTH0011928	2
CNR0000112	6	LTH0011930	2
CNR0000116	6	LTH0013242	2
COV0020501	6	LTH0013377	2
CPL0010001	4	MNT0022115	4
CPL0010002	4	MNT0022330	2
CPL0010005	4	MSR0014140	8
CPL0010010	4	MTR0010066	4,6
CVR0013237	2	PIN0000105	2
CVR0013238	2	PIN0000106	2
CVR0013239	2	PIN0011102	2
CVR0013240	2	PLG0013249	2
CVR0014024	2	PLT0005039	8
CYL0000224	2,4	PLT0015025	8
CYL0004042	2,4	PLT0015026	8
DOR0013258	2	PLT0015027	8
DOR0014022	2	PNL0018119	2
ELB0020195	6	PNL0021618	8
F 0000096	2	PPE0001250	4
F 0000172	2	PPE0100900	4
F 0001019	2	PPE1250900	4
F 0006673	4	PPE1251001	4
F 0006682	4	REL0000008	8
F 0007154	2	REL0000103	8
FD 0020578	8	REL0002120	8
FD 0021442	8	RNG0002012	4
FD 0021443	8	RNG0005262	6
FIL006CE25	4	ROD0017831	2
FRM0020572	2	ROD0017833	2
FT 0000530	4	SHF0017844	2
FT 0000549	4	SHF0017846	2
FUS0000018	8	SHM0021640	2
FUS0000042	8	SHM2049400	2
FUS0000052	8	SHM2049401	2
GAG0002112	4	SHM2049402	2
GU01870500	2	STA0010065	8
GU01870501	2	SUP0022977	2
GU01870700	2	SWI0005002	8
GU01870701	2	SWI0005003	8
HAN00000075	2	SWI0005038	8
HAN0022241	2	SWI0005059	4,6
HOS0018574	4	SWI0005079	2,6
HOS0018575	4	TBE0018446	2,4
HOS0018576	4	TNK0018635	4
HOS0018577	4	TRA0015020	8
HOS0018578	4	TUB0000650	4
HOS0018579	4	VLV0000025	4
HOS0018580	4	VLV00002010	4
HOS0018581	4	VLV0002820	4
HOS0018582	4	VLV0050065	4
HOS0018583	4	VLV0466515	4,6
HOS0018584	4	VLV046H515	4,6
HOS0018585	4	VLV9510084	4
HOS0018586	4	VLVCM025S	4
HOS0018587	4	WB 0005397	4
HOS0018588	4	WB 0006821	4
HYD0610606	4	WB 0008830	2
HYD1001000	4	WJB0014169	2
HYD3069060	4	ZZ 0000108	2
HYD3109063	4	ZZ 0000405	2,4
		ZZ 0000715	2
		ZZ 0000716	2

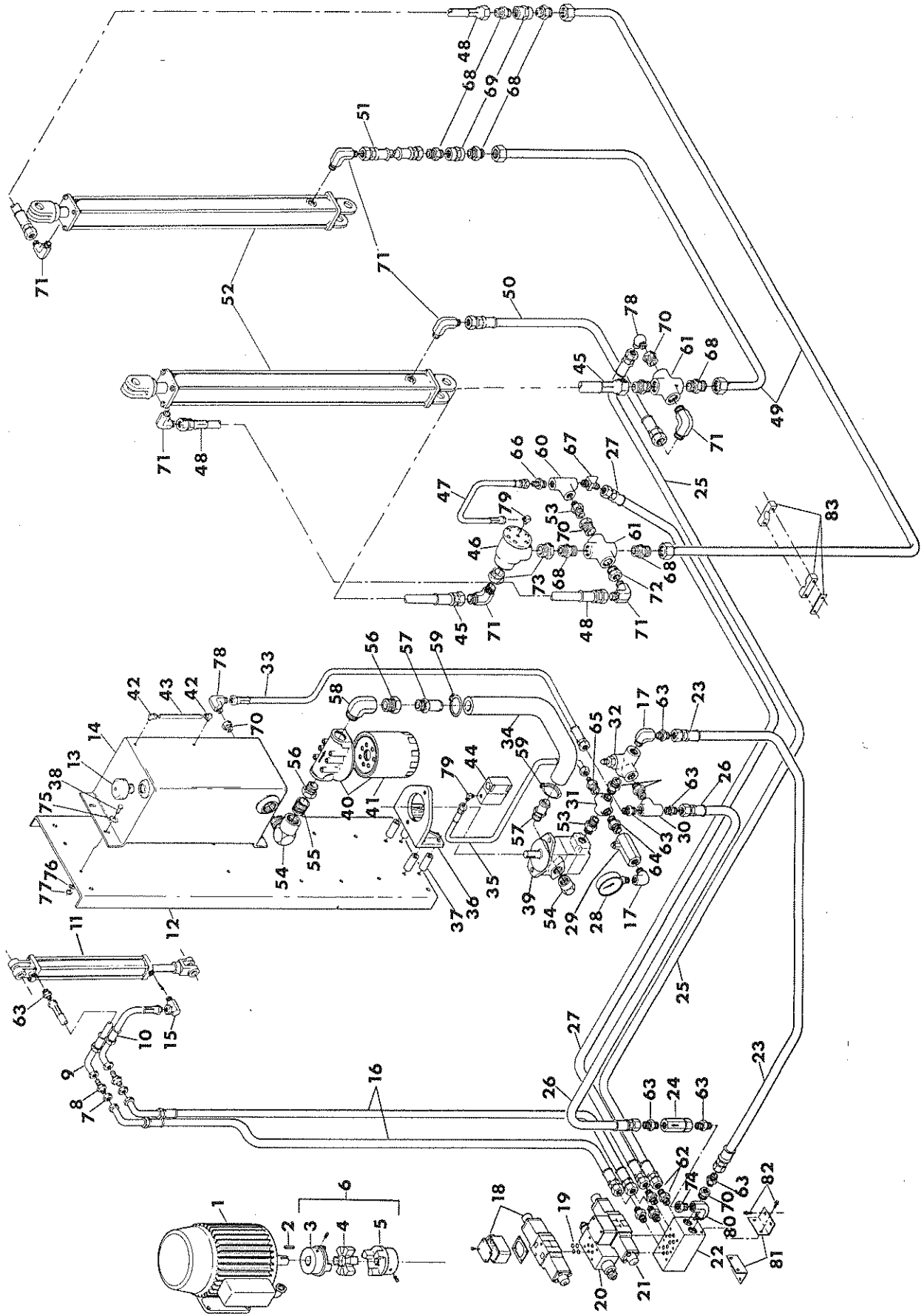
MAIN FRAME



MAIN FRAME

REF NO.	PART NO.	DESCRIPTION	QTY. USED
1	FRM0020572	MAIN FRAME ASSEMBLY -3048L4	1
2	CVR0013239	END COVER PLATE	1
3	CVR0013240	COVER PLATE	1
4	CYL0004042	4X42X1-3/4 CYL W/U-CUP ROD SEL	2
5	WJB0014169	EJECTOR ARM ASSEMBLY	1
6	CYL0000224	HYD CYL 2 X 24, 1-1/16 ROD	1
7	PNL0018119	REAR CLOSURE PANEL ASB -MN FRM	1
8	DDR0013258	CHAMBER DOOR-WB3848L4	1
9	CVR0014024	LOADING DOOR COVER PLATE	1
10	DDR0014022	LOADING DOOR -WB3048L4	1
11	CVR0013238	LEFT END COVER	1
12	LEV0017838	LOADING DOOR SPRING LEVER ASB	1
13	LNK0020888	SPRING LEVER LINK -3048L4	1
14	F 0000172	3/4" SET COLLAR	2
15	BRG0000016	1" TRIANGLE PILLOW BLOCK BEARING	2
16	F 0007154	SPRING F/ DOOR BALANCE	2
17	F 0000096	EYEBOLT-PICKUP LIFT SPRING	1
18	NCH0000500	1/2" NC HEX NUT - PLATED	1
19	ZZ 0000405	1/4 X 1/4 X 1-1/2 KEY	2
20	SHF0017844	LOAD.DOOR LH HINGE SHAFT-ASSEM	1
21	SHF0017846	LOAD.DOOR RH HINGE SHAFT-ASSEM	1
22	ROD0017831	LEFT LOADING DOOR LOCK ROD	1
22	ROD0017833	RIGHT LOADING DOOR LOCK ROD	1
23	LOK0000110	2-POINT DOOR LOCK-HANSEN	1
24	HAN0000075	TEE HANDLE	1
25	SMS0000221	8-32X1/2 PAN HD TAP SCREW-PLTD	4
26	PIN0011102	DOOR HINGE PINS	5
27	ZZ 0000715	1/4 X 1-3/4 ROLL PIN	3
28	ZZ 0000108	1/8 DRIVE STR 5/16 HEX ZERK	3
29	SCC0000506	1/2 X 2 NC HT CAP SCREW	2
30	BRG0000088	BEARING-INNER RACE	1
31	NCE0000500	1/2" NC ESNA NUT - PLATED	1
32	TBE0018446	PLUNGER CYLINDER SUPPLY TUBE	2
33	SCC0000107	1/4 X 2-1/4 NC HT CAP SCREW	8
34	06-106	3/4" TUBE CLAMP	4
35	PIN0000105	CLEVIS PIN	4
36	F 0001019	HAIRPIN COTTER .148 F/5/8" PIN	6
37	LTH0013377	DOOR LOCK TORQUE ROD PIVOT	2
38	LTH0011930	LINK PLATE	2
39	NCH0001000	1" NC HEX NUT - PLATED	4
40	NCE0000625	5/8" NC ESNA NUT - PLATED	2
41	LTH0013242	WASTE BALER-CHAMBER DOOR LOCK	2
42	HAN0022241	CHAMBER DOOR LOCK HANDLE	1
43	ZZ 0000716	1/8 X 1-1/2 ROLL PIN	2
44	LTH0011928	WAS BALER-DOOR LATCH LINK PLT	4
45	PIN0000106	PIVOT PIN 1X5 SCC-MOD 3-1/2	4
46	SCC0000706	5/8 X 2 NC HT CAP SCREW	2
47	BOX0015038	CONTROL BOX LAYOUT -3048L4	1
48	CAM0016575	LOADING DOOR CAM	1
49	WB 0008830	TRIP LOADING DOOR	1
50	NMS0001007	NUT	1
51	MNT0022330	LOADING DOOR SWITCH MOUNT	1
52	SWI0005079	LIMIT SWITCH-4 POST	2
53	ARM0005084	3" LEVER ARM W/3/4" ROLLER	2
54	GUD1870700	FRONT GUIDE EXTENSION-L.H.	1
54	GUD1870701	FRONT GUIDE EXTENSION-R.H.	1
55	GUD1870500	REAR GUIDE EXTENSION-L.H.	1
55	GUD1870501	REAR GUIDE EXTENSION-R.H.	1
56	PLG0013249	PLUNGER	1
57	SHM0021640	PLUNGER WEAR STRIP	8
57	SHM2049400	PLUNGER SIDE SHIM 16GA	1
57	SHM2049401	PLUNGER SIDE SHIM 10GA	1
57	SHM2049402	PLUNGER SIDE SHIM 1/4"	1
58	SMS0000107	1/4 X 1/2 NC SELF-TAP CS-PLTD	16
59	CVR0013237	END COVER PLATE	1
60	SCC0030009	3/8 X 2-3/4 NC HT CS - PLATED	16
61	WLK0000375	3/8" LOCKWASHER - PLATED	16
62	NCH0000375	3/8" NC HEX NUT - PLATED	16
63	SCC0000506	1/2 X 2 NC HT CAP SCREW	1
64	WCT0005000	1/2" FLATWASHER	1
65	SUP0022977	DOOR LATCH PIVOT SUPT.	1

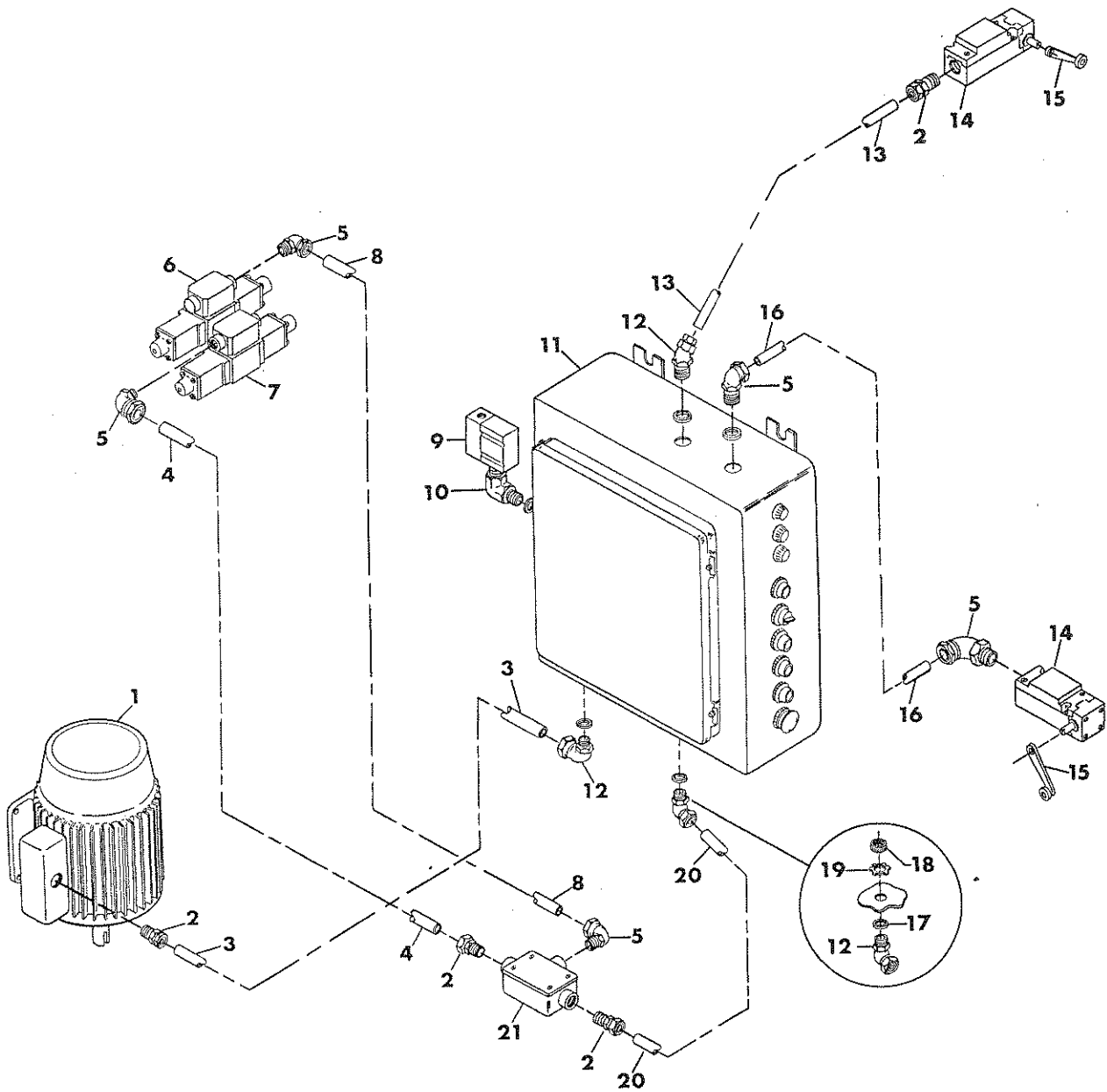
MAIN HYDRAULIC SYSTEM



MAIN HYDRAULIC SYSTEM

REF NO.	PART NO.	DESCRIPTION	QTY. USED
1	MTR0010066	MOTOR SHP 3PH 220/440 1750RPM	1
2	ZZ 0000405	1/4 X 1/4 X 1-1/2 KEY	1
3	CPL0010005	1-1/8 HUB COUPLER	1
4	CPL0010002	SPIDER COUPLING	1
5	CPL0010001	3/4 HUB COUPLER	1
6	CPL0010010	3/4 X 1-1/8 COMPLETE CPL	1
7	HYD5924030	3/8" BULKHEAD NUT	2
8	HYD5325030	3/8 JIC BULKHEAD UNION	2
9	HOS0018578	EXTRACTOR EXTEND HOSE	1
10	HOS0018579	EXTRACTOR RETRACT HOSE	1
11	CYL0000224	HYD CYL 2 X 24, 1-1/16 ROD	1
12	WB 0006821	BASE PLATE-POWER UNIT	1
13	TNK0018635	HYDRAULIC OIL TANK	1
14	FT 0000530	FILTER ASB-BF2113 OR 13829-98	1
15	HYD0610606	3/8 SWIVEL ADAPT ELB FEM UNION	1
16	HOS0018580	BALE EXTRACTOR SUPPLY HOSES	2
17	HYD3409040	1/2 X 90* STEEL STREET ELBOW	1
18	VLV046H515	VALVE-120V AC 4WE6H/51/AND/5	1
19	RNG0002012	O-RING	4
20	VLV0000025	RELIEF VALVE	1
21	VLV046G515	VALVE-120V AC 4WE6G-51/AND/5	1
22	VLV9510084	2 STATION SERIES MANIFOLD	1
23	HOS0018583	PRESSURE HOSE RELIEF VALVE	1
24	VLV0050065	1/2 X 65 LB CHECK VALVE 01-502	1
25	HOS0018587	PLUNGER PRESSURE HOSE	1
26	HOS0018577	VALVE MANIFOLD RETURN HOSE	1
27	HOS0018588	PLUNGER PRESSURE HOSE	1
28	GAG0002112	3000# HYDRAULIC GAUGE - 2-1/2"	1
29	VLV0002010	VALVE	1
30	HYD3709040	1/2 STEEL FEMALE PIPE TEE	1
31	HYD3959040	1/2 STEEL PIPE CROSS	1
32	01-513	RELIEF VALVE 2000PSI	1
33	HOS0018575	SYSTEM TO TANK RETURN HOSE	1
34	HOS0018574	SYSTEM SUCTION HOSE	1
35	HOS0018581	PRESSURE SWITCH HOSE	1
36	01-634	FOOT, FOR 01-633 PUMP	1
37	WB 0005397	PUMP MOUNT SPACER	4
38	SCC0000202	5/16 X 1 NC HT CAP SCREW	4
39	01-633	PUMP -V10-2P-4P4IC-10	1
40	01-635	FILTER ELEMENT&HEAD GCE-25	1
41	FIL006CE25	FILTER ELEMENT F/01-635	1
42	FI 0000549	1/4" BULKHEAD FITTING	2
43	TUB0000650	3/8" OD X 1/4" ID TUBE-UNIFLEX	1
44	SWI0005059	BARKSDALE PRESS SW-MINI PISTON	1
45	HOS0018584	PLUNGER CYLINDER SUPPLY HOSE	1
46	VLV0002820	VALVE -1"BLOCKING	1
47	HOS0018576	CHECK VALVE PILOT HOSE	1
48	HOS0018586	PLUNGER CYLINDER HOSE	2
49	TBE0018446	PLUNGER CYLINDER SUPPLY TUBE	2
50	HOS0018582	PLUNGER CYLINDER HOSE	1
51	HOS0018585	PLUNGER CYLINDER HOSE	1
52	CYL0004042	4X42X1-3/4 CYL W/U-CUP ROD SEL	2
53	VLVCM025S	VALVE, CHECK 3/8-5PSI-CMM025S	1
54	PPE1250900	1-1/4 90* NPT STREET ELBOW	1
55	PPE0001250	1-1/4 CLOSE STD NIPPLE	1
56	PPE1251001	1-1/4X 1 STD BLK HEX BUSH	2
57	HYD1001000	1" NIPPLE	2
58	PPE0100900	1 90* STD BLK PIPE ELBOW	1
59	CLP0000007	#7 CLAMP	2
60	HYD3709030	3/8 STEEL FEMALE PIPE TEE	1
61	HYD3959060	3/4 STEEL PIPE CROSS	2
62	HYD5205053	5/8 JIC X 3/8 NPT MALE CONN	4
63	HYD5205040	1/2 JIC X 3/8 NPT MALE CONN	7
64	HYD5205044	1/2 JIC X 1/2 NPT MALE CONN	3
65	HYD5205024	1/4 JIC X 1/2 NPT MALE CONN	1
66	HYD5205023	1/4 JIC X 3/8 NPT MALE CONN	1
67	HYD5355033	3/8 JIC X 3/8 NPT 45° MALE ELB	1
68	HYD5205060	3/4 JIC X 3/4 NPT MALE CONN	8
69	HYD3309060	3/4 STEEL PIPE COUPLING	2
70	HYD3109063	3/4 X 3/8 STEEL PIPE BUSHING	3
71	F 0006682	5/8 JIC X 3/4 NPT 90* MALE ELB	5
72	HYD3069060	3/4 NPT STEEL HEX NIPPLE	1
73	HYD3109076	1 X 3/4 STEEL PIPE BUSHING	1
74	HYD3109064	3/4 X 1/2 STEEL PIPE BUSHING	1
75	WCT0003125	5/16" FLATWASHER	4
76	WLK0003125	5/16" LOCKWASHER	4
77	NCH0003125	5/16" NC HEX NUT	4
78	F 0006673	3/8 JIC X 1/2 NPT 90* MALE ELB	1
79	HYD5405022	1/4 JIC X 1/4 NPT 90* MALE ELB	2
80	HYD3409060	3/4 X 90* STEEL STREET ELBOW	1
81	MNT0022115	VALVE MANIFOLD MOUNT	2
82	SMS0000184	5/16 X 3/4 NC WHIZ BOLT-PLATED	8
83	CLP0031901	HYCON CLAMP 3/4"	6

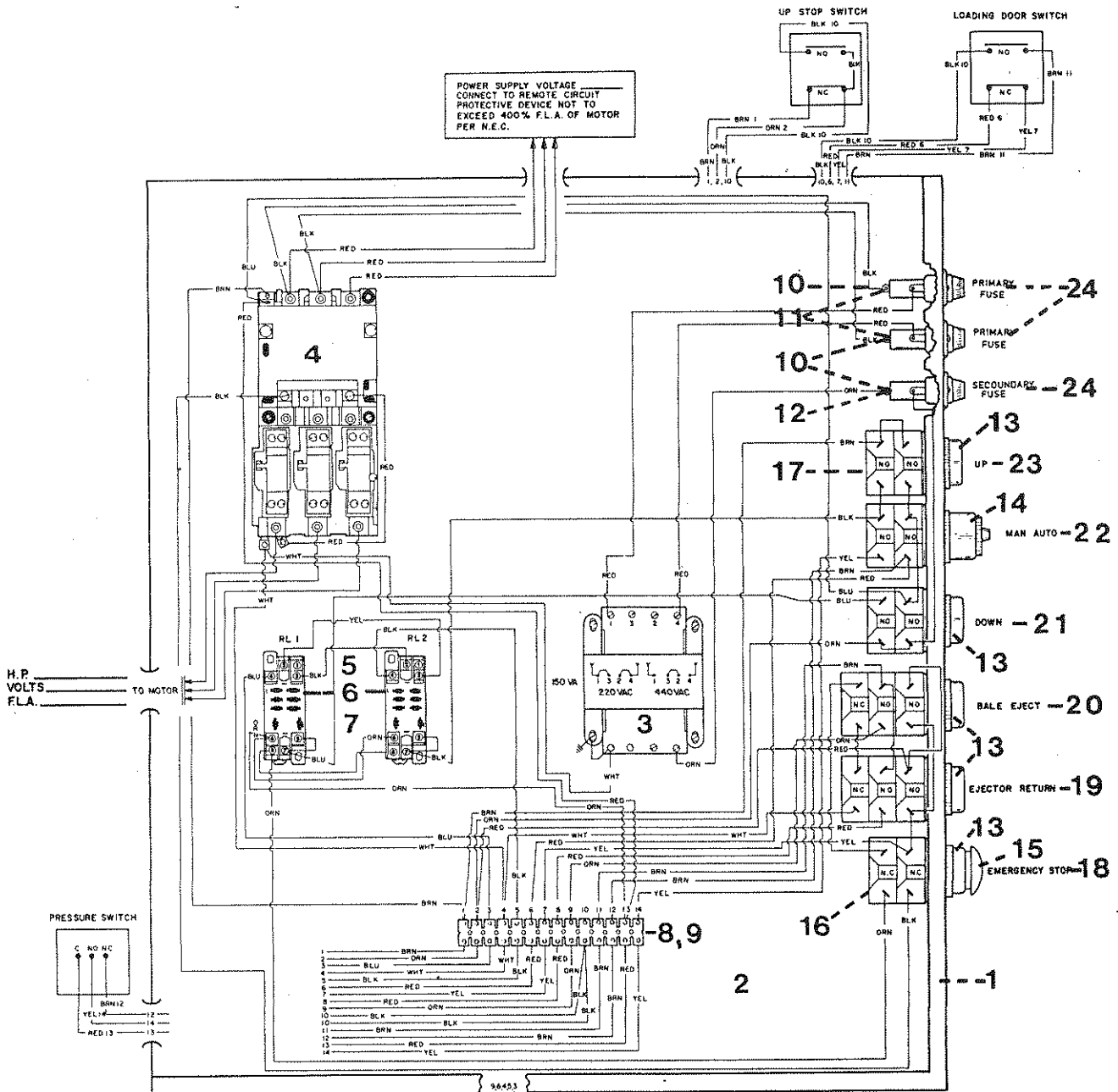
ELECTRICAL CONTROLS



ELECTRICAL CONTROLS

REF NO.	PART NO.	DESCRIPTION	QTY. USED
1	MTR0010066	MOTOR 5HP 3PH 220/440 1750RPM	1
2	CNR0000116	CONNECTOR, 1/2" LIQ.TITE-W/BSH	4
3	CDU0023062	MOTOR CONDUIT	1
4	CDU0023061	PLATEN CONTROL VALVE CONDUIT	1
5	CNR0000111	CONNECTOR MEYERS WATER TITE	5
6	VLV046H515	VALVE-120V AC 4WE6H/51/AND/5	1
7	VLV046G515	VALVE-120V AC 4WE6G-51/AND/5	1
8	CDU0023060	BALE EJECTOR VALVE CONDUIT	1
9	SWI0005059	BARKSDALE PRESS SW-MINI PISTON	1
10	ELB0020195	1/2 MALE ELBOW - EL-195	1
11	BOX0015038	CONTROL BOX LAYOUT -3048L4	1
12	CNR0000112	45* CONNECTOR	3
13	CDU0023064	UP STOP SWITCH CONDUIT	1
14	SWI0005079	LIMIT SWITCH-4 POST	2
15	ARM0005084	3" LEVER ARM W/3/4" ROLLER	2
16	CDU0023063	LOADING DOOR SWITCH CONDUIT	1
17	RNG0005262	SEALING RING F/1/2"CONNECTOR	5
18	BSH0020051	1/2" PLASTIC CONDUIT BUSHING	5
19	NMS0000150	1/2 CONDUIT LOCKNUT-STEEL	5
20	CDU0023065	BOX TO JUNCTION BOX CONDUIT	1
21	BOX0020500	OUTLET BOX FSCT-1	1
21	COV0020501	CONDULET COVER	1

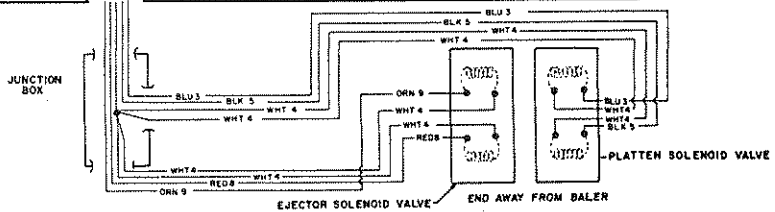
CONTROL BOX



NOTE:

- N.E.C. ARTICLE 450 - 3 (b) (1)
- MAX. PRIMARY FUSE: 300 % OF TRANS. RATED CURRENT.
- N.E.C. ARTICLE 450-3 (b) (2)
- MAX. SECONDARY FUSE: 167% OF TRANS. RATED CURRENT

FUSE SIZE TABLE			
BALER MOTOR SIZE	TRANS. SIZE	115 V. SECONDARY FUSE SIZE	220 / 440 V. PRIMARY FUSE SIZE
5 HP	150 VA	FNM 2	FNQ 1



CONTROL BOX

REF NO.	PART NO.	DESCRIPTION	QTY. USED
1	BOX0015038	CONTROL BOX LAYOUT	1
2	PNL0021618	CONTROL BOX PANEL 5HP	1
3	TRA0015020	TRANSFORMER-MICRON 230-460V	1
4	STA0010065	STARTER 220/440 COIL	1
5	REL0002120	RELAY	2
6	REL0000008	RELAY BASE	2
7	REL0000103	RELAY HOLD DOWN CLIP	4
8	BAB0014140	TERMINAL BLOCK-14 POST	1
9	MSR0014140	MARKER STRIP	1
10	FUS0000018	FUSE HOLDER	3
11	FUS0000052	FUSE - FNQ 1	2
12	FUS0000042	FUSE - FNM 2	1
13	SWI0005003	PUSH BUTTON SWITCH	5
14	SWI0005002	2 POSITION SELECT SWITCH	1
15	SWI0005038	PUSH BUTTON MUSHROOM-RED	1
16	BLK0005041	CONTACT BLOCK	4
17	BLK0005004	CONTACT BLOCK	10
18	PLT0005039	LEGENDPLATE-"EMERGENCY STOP"	1
19	FD 0021443	DECAL-EJECTOR DOWN	1
20	FD 0021442	DECAL-EJECTOR UP	1
21	PLT0015025	LEGEND PLT-DN	1
22	PLT0015027	LEGEND PLATE	1
23	PLT0015026	LEGEND PLT-UP	1
24	FD 0020578	DECAL-FUSES FNQ1,FNQ1,FNM2	1