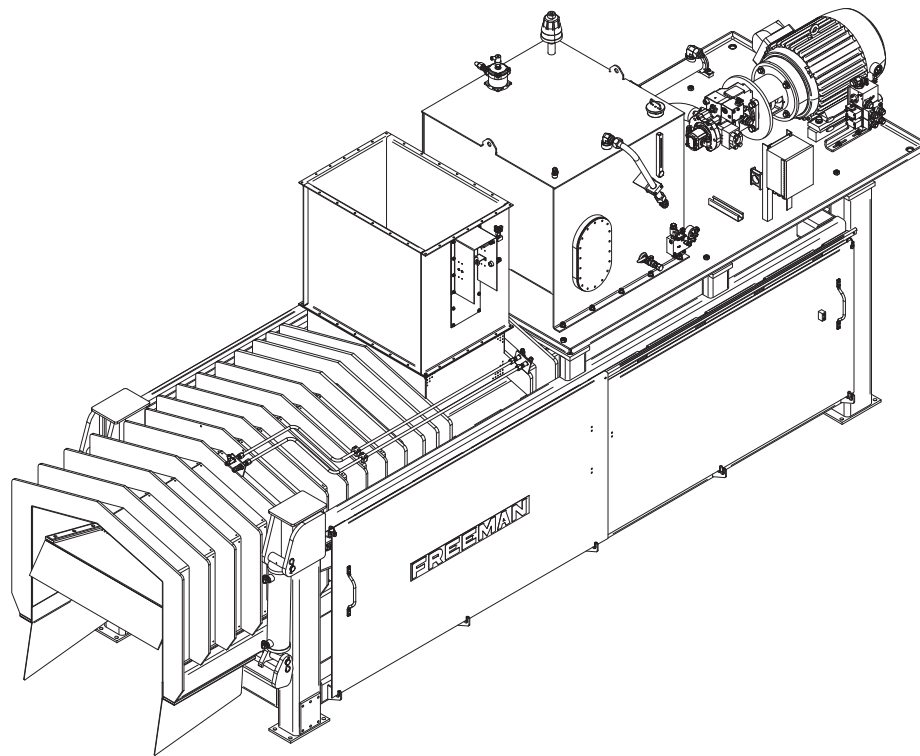


FREEMAN

A Division of Allied Systems Company

MODEL WE-5 WATER EXTRACTOR



2008 PARTS LIST

SAFETY PRECAUTIONS

“THE BEST SAFETY DEVICE IS A CAREFUL OPERATOR”

Do not clean, lubricate, or make any adjustments on the equipment while it is in operation.

Do not start the equipment until you are certain everyone is clear of the machine and have ensured there are no tools on the unit.

Do not work around equipment in loose clothing.

Do not attempt to service any equipment while the motor is running.

Inspection Covers and Safety Shields should only be removed by authorized service persons.

After servicing do not place the equipment back into operation until all Safety Shields and Devices have been replaced. Operation without Safety Shields and Devices can place the operator into a hazardous situation.

Do not open or work on the In-Feed System until the flow of material has been stopped and the Water Extractor Motor has been turned off.

Do not make any adjustments or reach under any load bearing surfaces while they are loaded.

INSTRUCT ALL OPERATORS ON SAFETY PRECAUTIONS.



WARNING: SOME ILLUSTRATIONS IN THIS PARTS LIST SHOW THE BALER WITHOUT SHIELDS TO ALLOW FOR A BETTER VIEW OF THE AREA BEING ADDRESSED. THE BALER SHOULD NEVER BE OPERATED WITH ANY OF THE SAFETY SHIELDS REMOVED.

INTRODUCTION

HOW TO USE THE MANUAL

This manual contains illustrations and parts lists of components and assemblies which make up the machine. Each page consists of the name of the assembly or component, a reference number, part number, part name and the quantities of the part used.

Assembly or component names help identify the illustration and parts list for each figure. This name also helps locate the general area of the machine where the assembly or component can be located.

Reference numbers shown in a column refers to the numbered parts in the illustration. This ties the part in the illustration to the part number and description in the parts list. Part numbers are used to identify individual parts or part assemblies

Part descriptions provide the name of the part, plus additional information such as dimensional specification and what parts are grouped together to form part assemblies, which helps you identify the parts.

Quantities listed for each illustration are only for that assembly or component and not the total used per machine.

Indent dots are used to indicate assemblies and sub-parts of assemblies. No dot indicates the major assembly. Part descriptions which are indented with dots are sub-parts of the major assembly shown above.

This parts manual is not intended to be a complete guide for machine service or repairs. Contact your dealer for any of your service or technical requirements.

UPDATING AND REORDERING MANUALS

The parts lists, illustrations and specifications in this manual are based on the latest information available at the time of publication. Your machine may have product improvement and options not yet contained in this manual.

A copy of this manual is supplied with each machine. Additional copies are available through you dealer. When ordering additional manuals, use the reorder number listed on the front cover and the quantity needed.

SERIAL NUMBER LOCATION AND BALER IDENTIFICATION

Each Freeman Baler is identified by means of a baler model number and baler serial number. As a further identification, all power units are provided with a serial number.

To ensure prompt, efficient service when ordering parts or requesting repairs from your authorized Freeman dealer, record the serial numbers in the spaces provided.

WATER EXTRACTOR SERIAL NUMBER _____

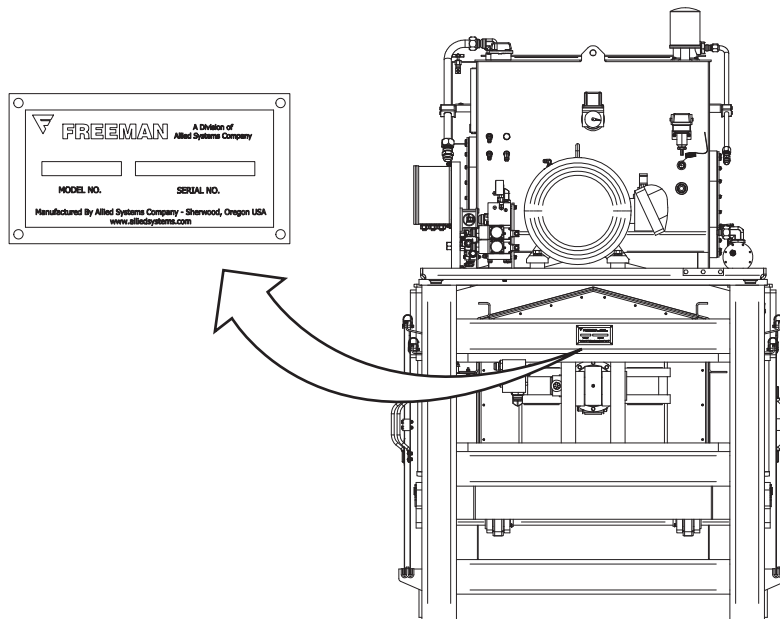
Front of baler frame under oil cooler.

POWER UNIT SERIAL NUMBER _____

Electric Motor- _____

Left side, near connection box.

NOTE: The motor and pump end is considered the front of the baler. The sides are described as left-hand side and right-hand side as viewed from behind while facing the discharge end of the Water Extractor.

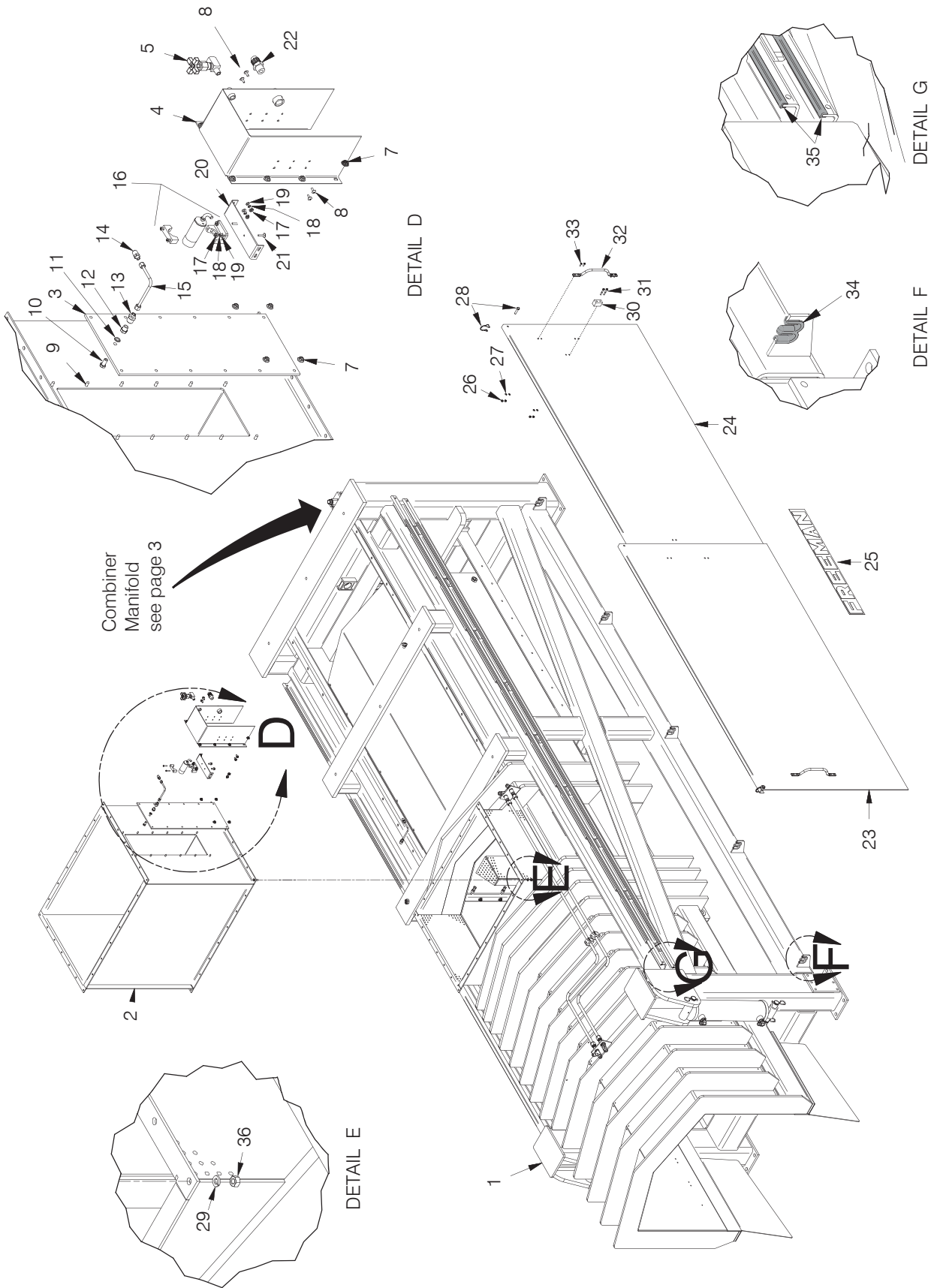


Starting with ASC-0WE5-503

Table of Contents

Combiner Manifold	3
Control Box	21
Frame.....	1
Hoses.....	9
Hydraulics Manifold	19
In-Feed Chute.....	1
Junction Box.....	5
Motor And Pump.....	17
Plunger	9
Plunger Sensors	7
Power Unit.....	15
Restrictor Rail.....	11

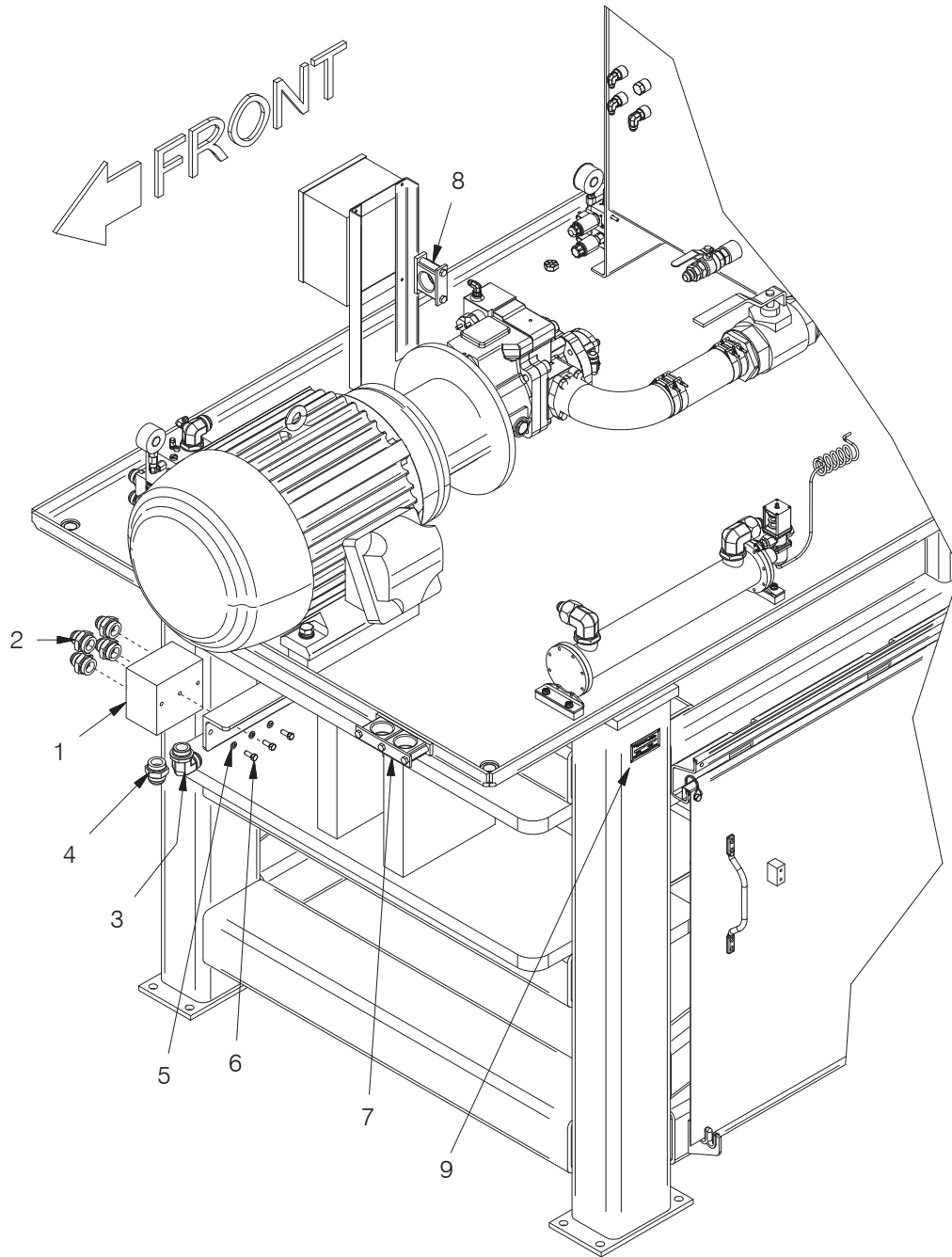
FRAME



FRAME

REF NO.	PART NO.	DESCRIPTION	QTY. USED
1	902753	FRAME ASSY,MAIN WE5	1
2	900923	INFEED CHUTE ASSY WE5	1
3	WND0024498	WINDOW	1
4	BKT0026116	BRACKET,SENSOR	1
5	VLV0000400	1/4 NEEDLE VALVE	1
6	SMS0000173	BOLT, WHIZ; 1/4 NC X 1/2	4
7	09416918	NUT, SERRATED; 1/4 NC GR5	12
8	234329	CS; 10-32 NF X 1/2 RD SLOT HD (SS)	4
9	SMTS001001	MCH SCR; 1/4 NC X 3/4 TRUS HD (SS)	12
10	VLV0026113	AIR VALVE	1
11	WAS0093781	THREAD SEALING WASHER	1
12	BSH0026123	FITTING	1
13	HYD6600404	1/4 FEMALE CONNECTOR	1
14	F000008221	1/4 MALE CONNECTOR	1
15	TBE0261300	TUBE ASSY	1
16	254163	SENSOR, PROX	1
17	220044	NUT, HEX; 10-32 NF	6
18	221794	WASHER, LOCK; 10-32	6
19	18423W	WASHER #10	6
20	BKT0023959	BRACKET	1
21	00100766	MACH SCR; 10-32 X 3/4 RD SLOT	2
22	27663	CONNECTOR, CORD	1
23	901648	PL,OUTER DOOR	1
24	902764	PL,INNER DOOR	1
25	FD00007111	DECAL;D; FREEMAN (25" X 4" WHITE)	1
26	221703W	NUT, HEX; 1/4 UNC	8
27	223696	WASHER, LOCK; 1/4	8
28	PIN0375125	3/8 SNAPPER PIN	2
29	235554	5/16" LOCKWASHER - SS	26
30	901651	BLOCK,STOP	1
31	09413503	CAPSCREW; 1/4 NC X 1 3/4 GR5	2
32	HAN0000817	HANDLE, GRAB	2
33	SMT0001001	1/4 X 3/4 TH MACH SCREW-PLT	4
34	225214	CLAMP	10
35	254617	GUIDE RAIL	2
36	236051	5/16 NUT	26

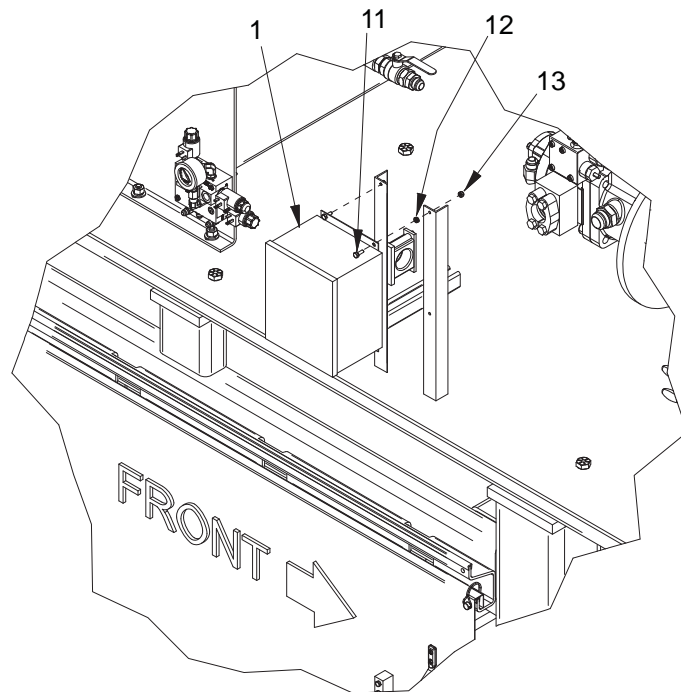
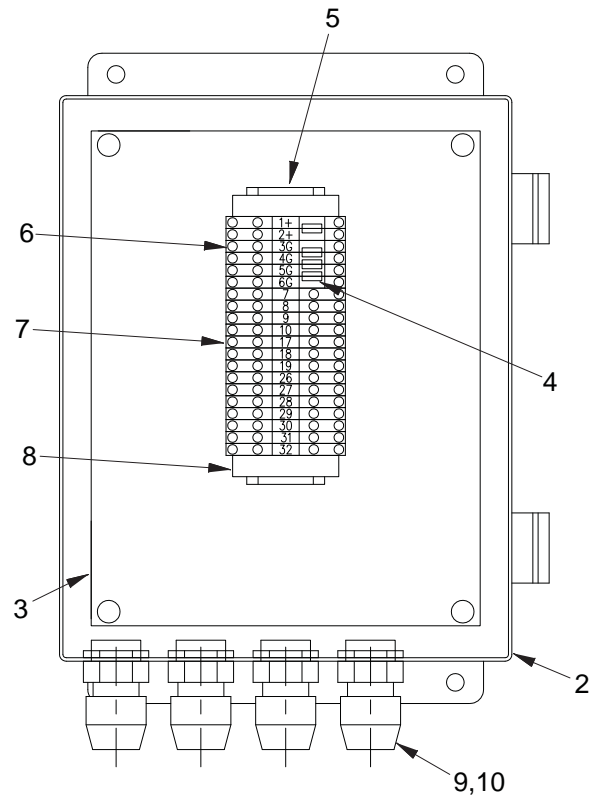
COMBINER MANIFOLD



COMBINER MANIFOLD

REF NO.	PART NO.	DESCRIPTION	QTY. USED	REF NO.	PART NO.	DESCRIPTION	QTY. USED
		1 903231	COMBINER MANIFOLD			1	
		2 209142	FITTING; ST			4	
		3 209714	FITTING; EL			1	
		4 209619	FITTING; ST			1	
		5 WLKS000375	LOCKWASHER - STAINLESS			3	
		6 231848	CAPSCREW; 3/8 NC X 1 (SS)			3	
		7 225214	CLAMP			1	
		8 224411	CLAMP			1	
		9 NP00000100	PLATE; MODEL/SERIAL #			1	

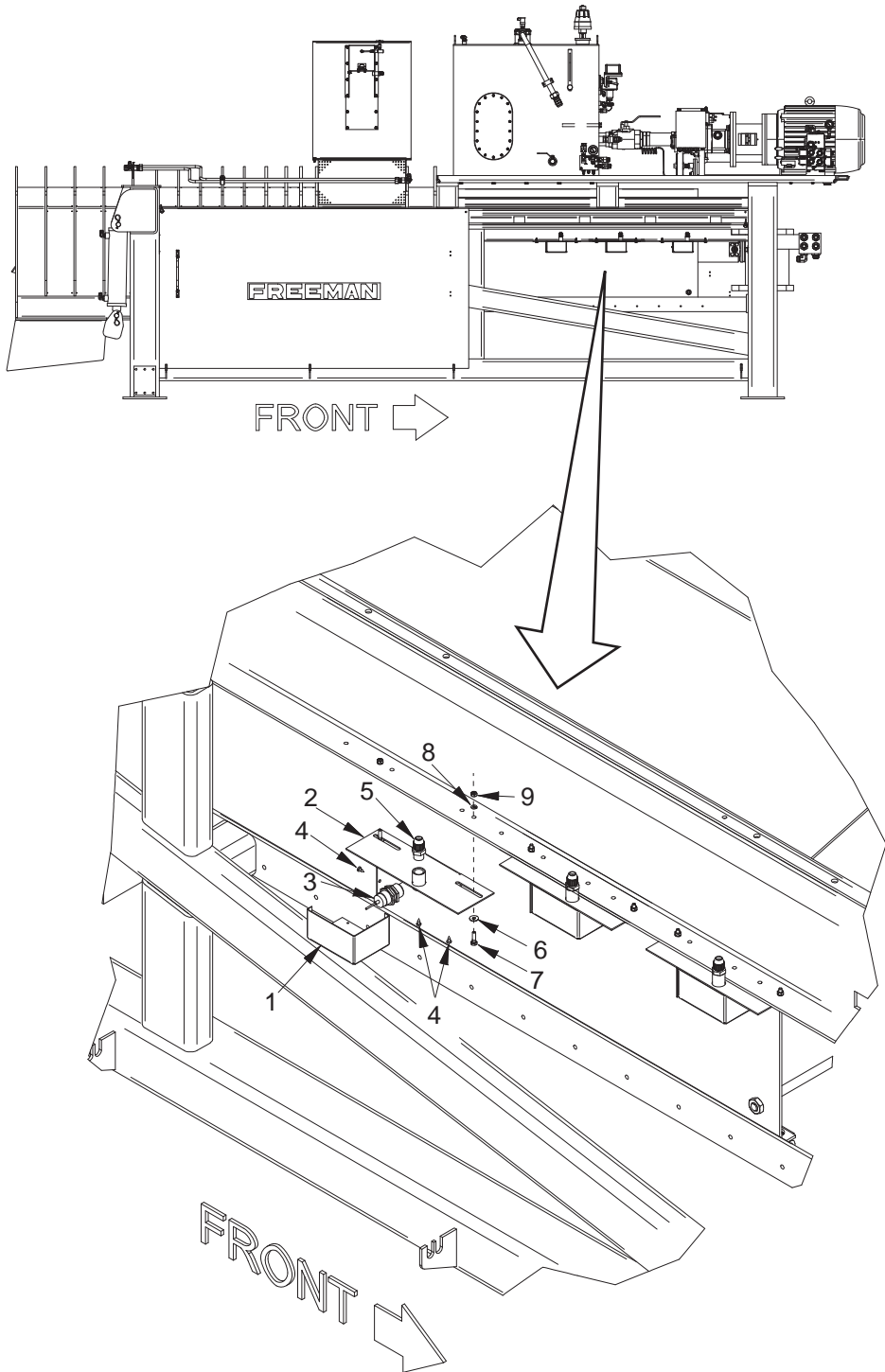
JUNCTION BOX



JUNCTION BOX

REF NO.	PART NO.	DESCRIPTION	QTY. USED
1	903000	JUNCTION BOX ASSY; WE4B/WE5A	1
2	903001	BOX	1
3	22623	PANEL, BACK	1
4	236926	JUMPER, HORIZONTAL	12
5	22628	RAIL	.133
6	239317	TERMINAL BLOCK 280-646	6
7	232237	TERMINAL BLOCK 280-641	14
8	241761	STOP, END 249-117	2
9	27663	CONNECTOR, CORD	10
10	27054	RING NUT	10
11	234130	CAPSCREW; 1/4 NC X 3/4 (SS)	4
12	GRM0005008	1/2" STD SNAP BUSHING GROMMET	4
13	234170	NUT, ESNA; 1/4 NC (SS)	4

PLUNGER SENSORS

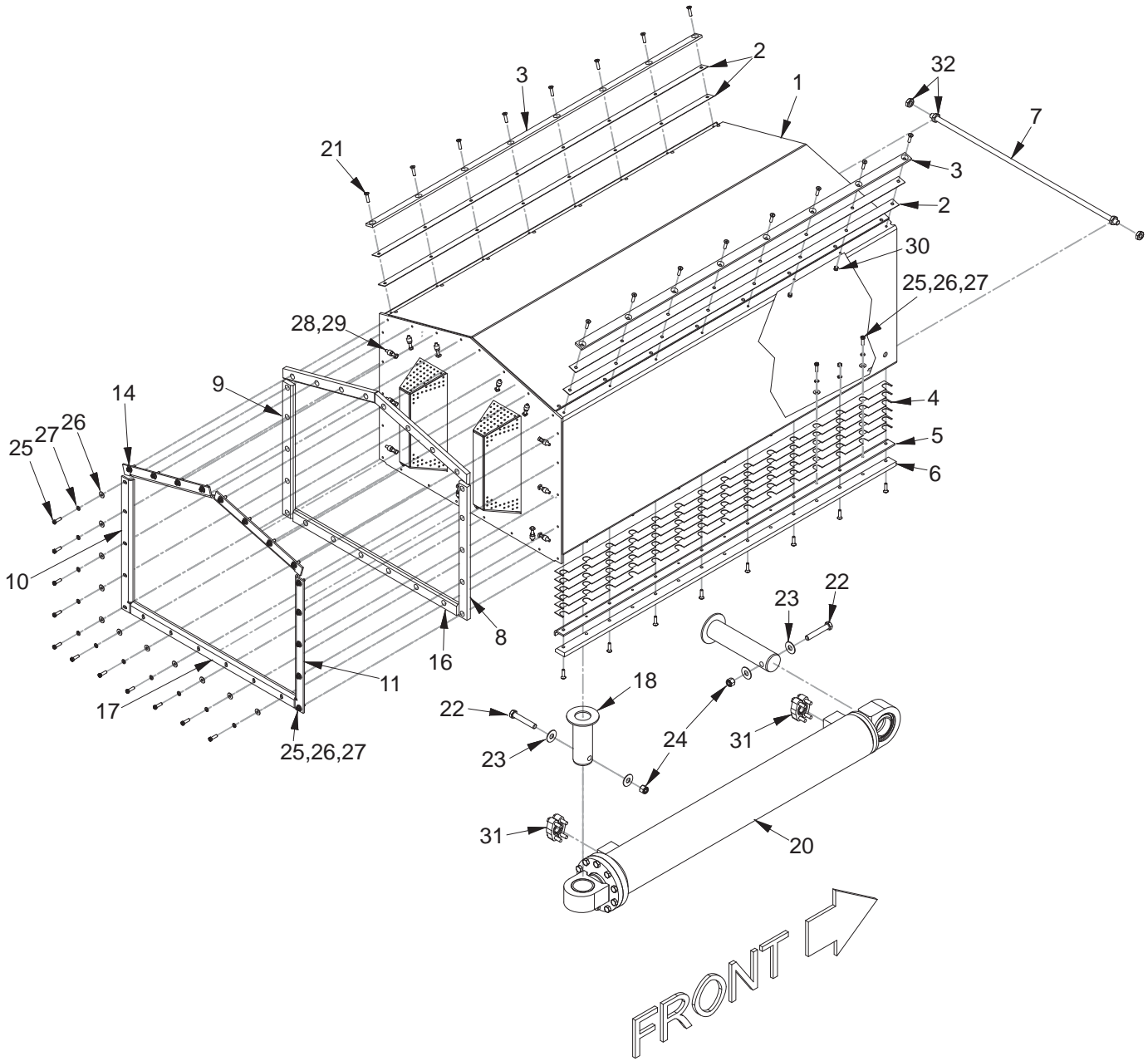


PLUNGER SENSORS

REF NO.	PART NO.	DESCRIPTION	QTY. USED
1	MNT0024567	PL,COVER	3
2	902889	MOUNTING; PLUNGER SENSOR	3
*3	244112	SWITCH, PROX	3
4	SMTS103250	10-32 X 1/2 TH MACH SCREW (SS)	9
5	27663	CONNECTOR, CORD	3
6	234333	WASHER, FLAT; 1/4 (SS)	6
7	228410	CAPSCREW; 1/4 NC X 1 (SS)	6
8	228412	WASHER, LOCK; 1/4 REG SPR (SS)	6
9	228413	NUT, HEX; 1/4 NC (SS)	6

* CENTER SWITCH, PROX 244112 FIRST USED ON
SERIAL NUMBER ASC-0WE5-504.

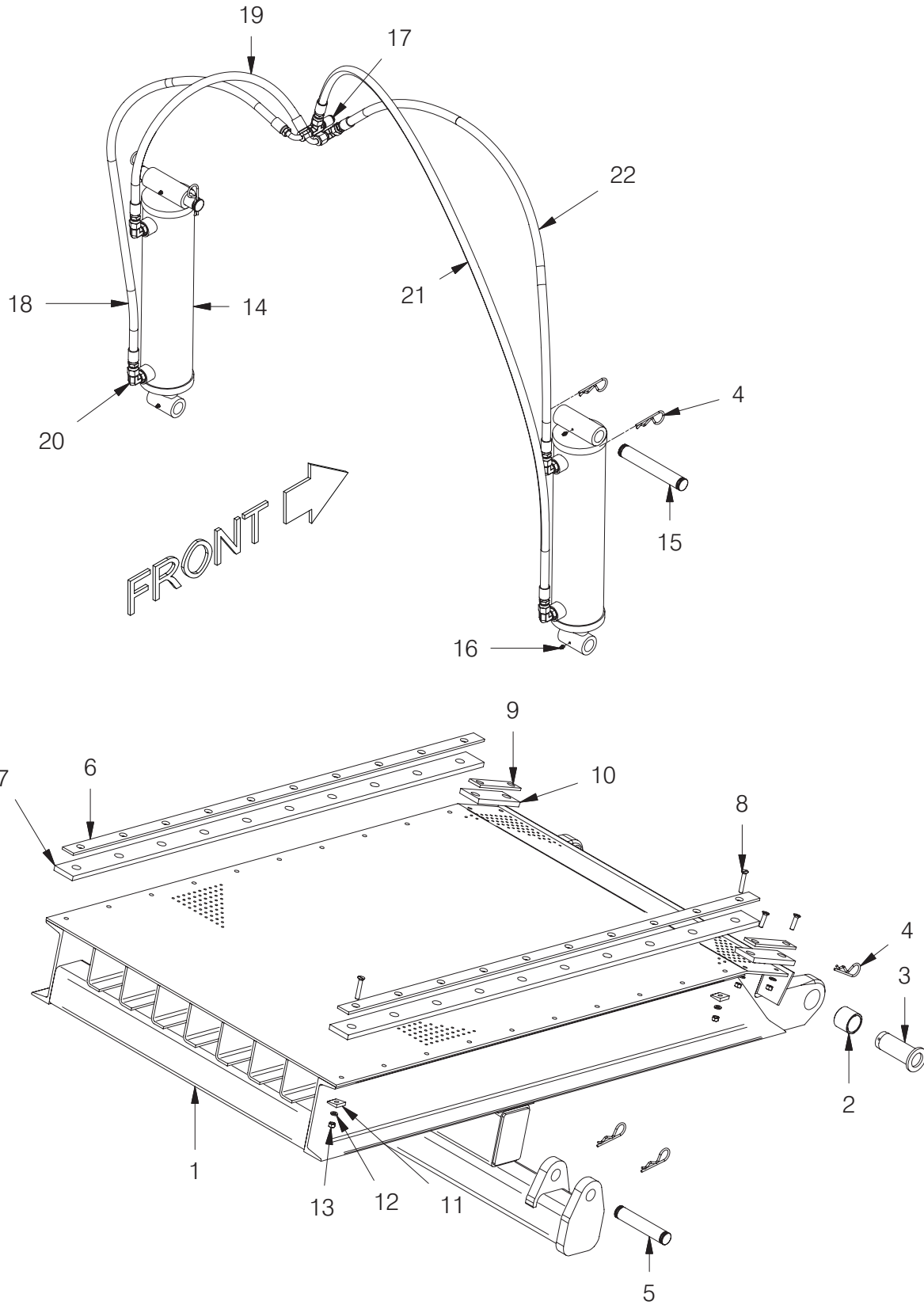
PLUNGER



PLUNGER

REF NO.	PART NO.	DESCRIPTION	QTY. USED	REF NO.	PART NO.	DESCRIPTION	QTY. USED
1	900194	PLATEUNGER FRAME	1	20	901156	CYLINDER ASSEMBLY	1
2	902892	PLATE,SHIM	4		901363	. KIT, PACKING,6"	1
3	PLG0021900	PLATE, TOP	2	21	SMFS000304	FLAT HD MS NC 3/8 X 1-1/2 - SS	32
4	SHM0021922	SHIM	12	22	SCCS000812	HEX HD CS NC 3/4 X 4-1/2 -SS	2
5	PLG0025903	PLATE,BACKUP	2	23	234173	FLAT WASHER	4
6	PLG0021920	PLATE,BTM	2	24	233852	NUT, ESNA	2
7	901016	ROD	1	25	SCCS000303	HEX HD CS NC 3/8 X 1-1/4 -SS	38
8	901027	WIPER,LH	1	26	WCTS000375	FLATWASHER 3/8 - STAINLESS	38
9	901028	WIPER,RH	1	27	WLKS000375	3/8" LOCKWASHER - STAINLESS	54
10	901029	PLATE,LH BACKUP	1	28	NCHS000375	HEX NUT NC 3/8" - SS	30
11	901030	PLATE,RH BACKUP	1	29	SQSS375200	3/8X2 SQ HEAD STE SCREW-STNLS	14
12	901031	WIPER,LH TOP	1	30	231851	NUT, ESNA	16
13	901032	WIPER,RH TOP	1	31	229449	KIT, SPLIT FLANGE	2
14	901033	PLATE,LH TOP	1		200604	. WASHER	8
15	901034	PLATE,RH TOP	1		203446	. O-RING	2
16	901056	BAR,BTM	1		225328	. CLAMP HALF	4
17	901057	PLATE,BTM	1		230961	. CAPSCREW	8
18	901099	PIN WELDMENT,PIVOT	1	32	NCJS000750	JAM NUT NC 3/4 SS	4
19	901604	PIN WELDMENT,PIVOT	1				

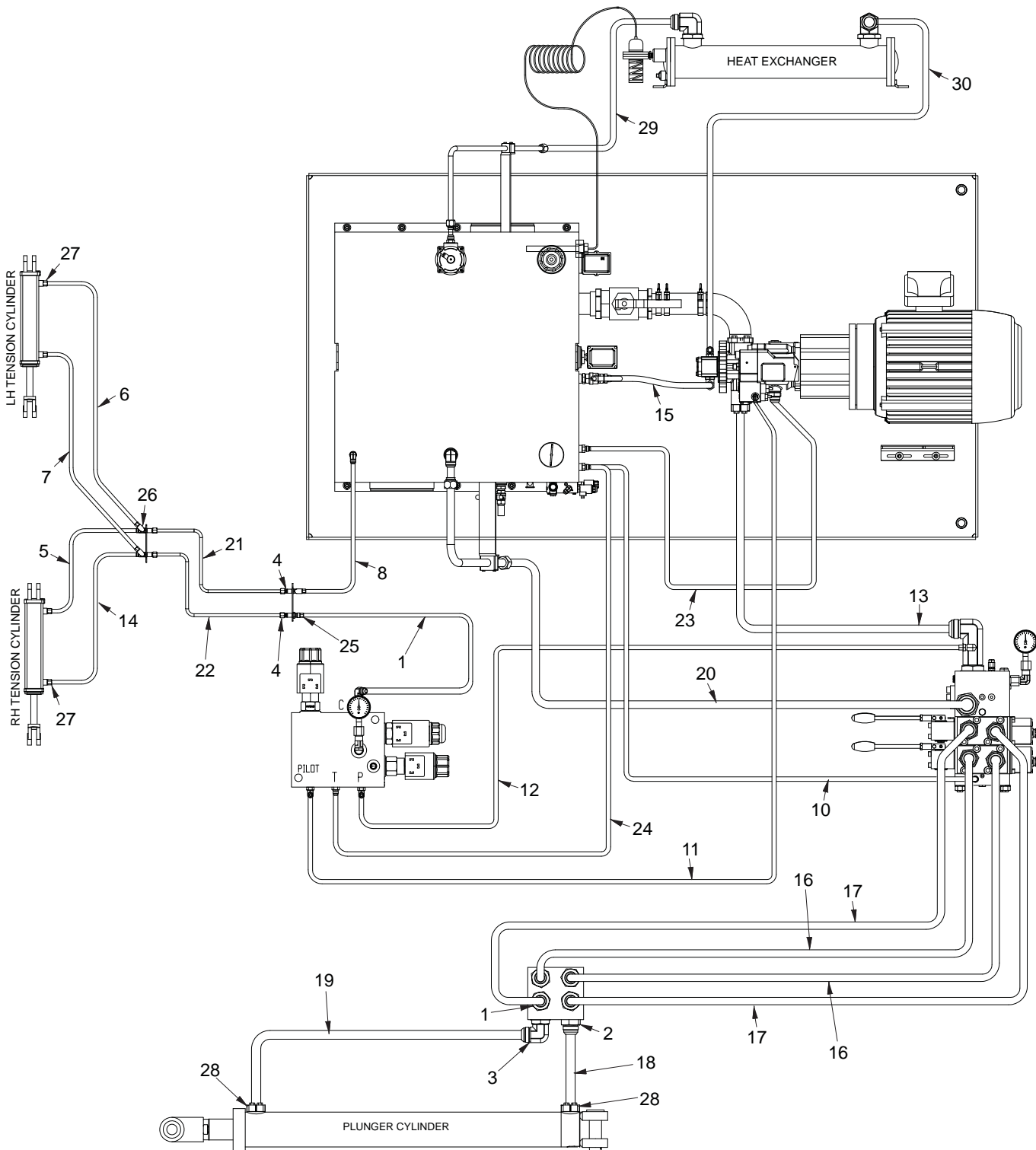
RESTRICTOR RAIL



RESTRICTOR RAIL

REF NO.	PART NO.	DESCRIPTION	QTY. USED	REF NO.	PART NO.	DESCRIPTION	QTY. USED
1	900965	RESTRICTION RAIL ASSY WE5	1	12	WLKS000375	3/8" LOCKWASHER - STAINLESS	24
2	901230	BUSHING	1	13	NCHS000375	HEX NUT NC 3/8" - SS	24
3	901481	PIN PIVOT; WE4&5 RESTRICTOR RAIL	2	14	253276	CYLINDER	2
4	F000006511	HAIRPIN FOR CYLINDER PIN	10		253691	. SEAL KIT	2
5	901646	PIN,BOTTOM	2	15	901645	PIN	2
6	RAL0021933	PL,BACKUP	2	16	11079	FITTING, LUBE	4
7	RAL0021932	PL,RAIL	2	17	R12579595	FITTING	2
8	SMFS000308	FLAT HD MS NC 3/8" X 2-1/4 - SS	24	18	253464	HOSE ASSY	1
9	RAL0021935	PL,BACKUP	2	19	HOS0027352	HOSE ASSY	1
10	RAL0021934	BAR;UHMW	2	20	231921	FITTING; EL	4
11	WASS000143	3/8" STAINLESS BEVEL WASHER	20	21	HOS0033050	HOSE ASSY	1
				22	253465	HOSE ASSY	1

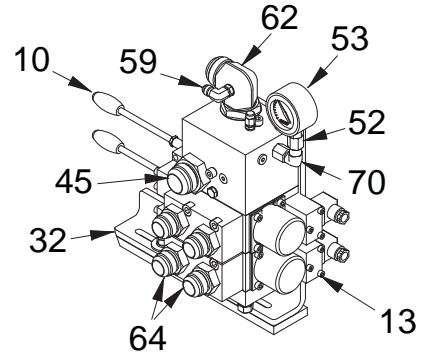
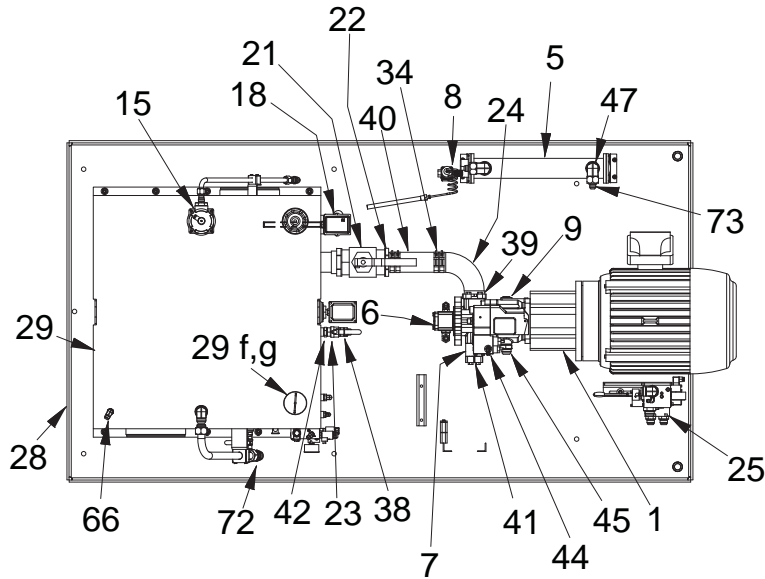
HOSES



HOSES

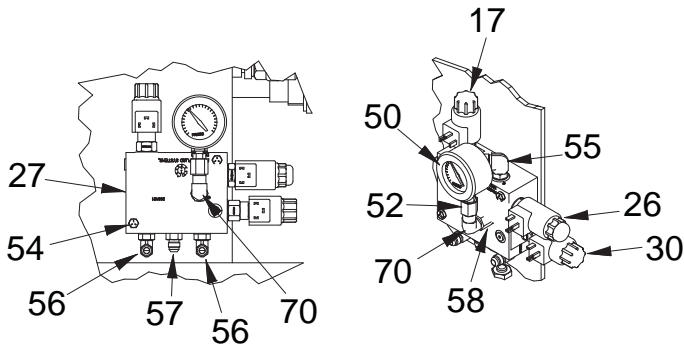
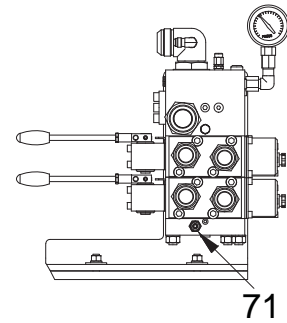
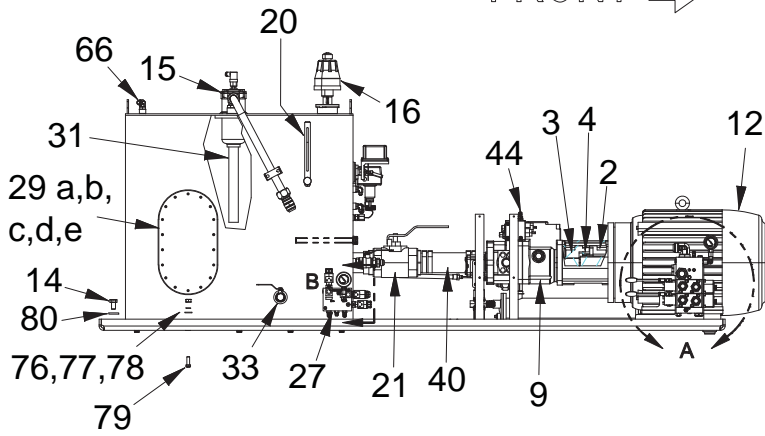
REF NO.	PART NO.	DESCRIPTION	QTY. USED	REF NO.	PART NO.	DESCRIPTION	QTY. USED
1	209142	FITTING	4	17	255508	HOSE ASSEMBLY	2
2	209619	FITTING	1	18	255509	HOSE ASSEMBLY	1
3	209714	FITTING	1	19	255510	HOSE ASSEMBLY	1
4	243248	FITTING	4	20	255511	HOSE ASSEMBLY	1
5	255464	HOSE ASSEMBLY	1	21	901754	TUBE ASSEMBLY	1
6	256143	HOSE ASSEMBLY	1	22	901755	TUBE ASSEMBLY	1
7	256144	HOSE ASSEMBLY	1	23	2509118	HOSE ASSEMBLY	1
8	255467	HOSE ASSEMBLY	1	24	HOS036662A	HOSE ASSEMBLY	1
9	255468	HOSE ASSEMBLY	1	25	237203	FITTING, FF	4
10	255469	HOSE ASSEMBLY	1	26	HYD5725050	FITTING	2
11	255470	HOSE ASSEMBLY	1	27	209488	FITTING	4
12	255471	HOSE ASSEMBLY	1	28	229449	KIT, SPLIT FLANGE	2
13	255472	HOSE ASSEMBLY	1		200604	. WASHER	4
14	255473	HOSE ASSEMBLY	1		203446	. O-RING	1
15	255506	HOSE ASSEMBLY	1		225328	. CLAMP HALF	2
16	255507	HOSE ASSEMBLY	2		230961	. CAPSCREW	4
				29	207825	HOSE ASSEMBLY	1
				30	206636	HOSE ASSEMBLY	1

POWER UNIT

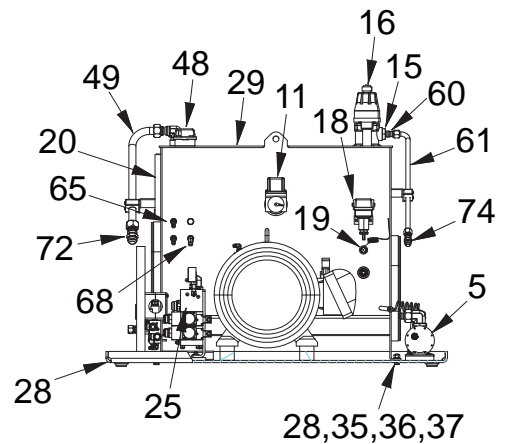


DETAIL A

FRONT →



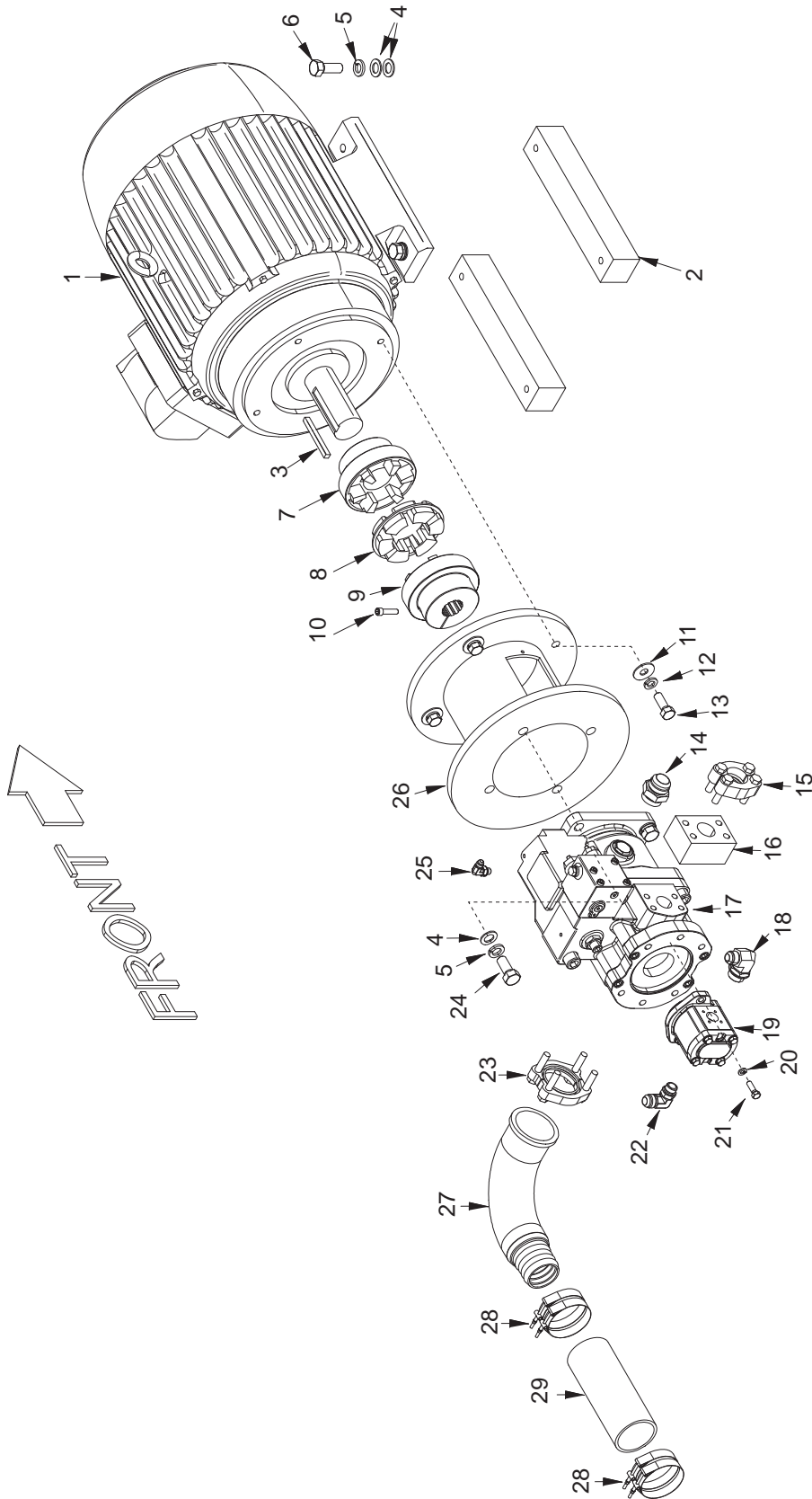
DETAIL B



POWER UNIT

REF NO.	PART NO.	DESCRIPTION	QTY. USED	REF NO.	PART NO.	DESCRIPTION	QTY. USED
1	254140	ADAPTER	1	34	225369	T-BOLT CLAMP	1
2	224960	COUPLING, HALF	1	35	239519	FLAT WASHER	10
3	253669	COUPLING	1	36	234665	LOCKWASHER	10
4	237526	INSERT	1	37	221712W	HEX NUT	10
5	255722	HEAT EXCHANGER	1	38	209533	FITTING	1
6	253677	PUMP, RECIRCULATION	1	39	23390	KIT, SPLIT FLANGE	1
7	253680	CHECK VALVE	1	40	249266	SUCTION HOSE	1
8	255723	WATER VALVE, MODULATING	1	41	229449	KIT, SPLIT FLANGE	1
9	253672	PUMP, PISTON	1	42	227384	FITTING	1
10	251917	LEVER	2	43	12666	FITTING	1
11	SWI0059037	SWITCH, FLOAT	1	44	R2535834	FITTING, B;	1
12	253671	MOTOR, ELEC;A; 75HP	1	45	209619	FITTING	2
13	256130	COIL	2	47	209137	FITTING	2
14	228411	CS; 1/4 NC X 1 3/4 (SS)	9	48	209714	FITTING	1
15	254004	FILTER ASSEMBLY, HYDRAULIC OIL	1	49	902993	TUBE ASSEMBLY	1
	255997	. INDICATOR, ELEC	1	50	214203	GAUGE	1
	255996	. FILTER ELEMENT	1	52	225648	SNUBBER, GAUGE	1
16	253674	FILTER, BREATHER	1	53	231135	GAUGE	1
17	256021	VALVE, PROP RELIEF	1	54	Y01C-0448	CAPSCREW	1
		. SEAL KIT	1	55	224298	FITTING	1
18	253673	SWITCH, TEMP	1	56	R13801972	FITTING	1
19	254006	THERMOWELL	1	57	211560	FITTING	1
20	253675	GAUGE, SIGHT LEVEL/TEMP	1	58	20856	FITTING	1
21	253679	BALL VALVE	1	59	11860	FITTING	1
22	254135	FITTING, HA	1	60	23408	FITTING	1
23	254010	BALL VALVE	1	61	902279	TUBE ASSEMBLY	1
24	255077	FITTING, HA	1	62	529950	FITTING	1
25	255204	VALVE, DIRECTIONAL	1	64	209323	FITTING	4
26	*253991	VALVE, 3-WAY W/MANUAL OVERRIDE	1	65	23945	FITTING	2
	256132	. SEAL KIT	1	66	229384	FITTING	1
*Used on ASC-0WE5-503				68	209488	FITTING	1
	**256264	VALVE, CARTRIDGE;A; 2-POS, 3-WAY	1	70	223638	FITTING	2
	256132	. SEAL KIT	1	71	222886	FITTING	1
** Used on ASC-0WE5-504 & ASC-0WE5-505				72	209443	FITTING	1
27	255121	MANIFOLD ASSY, CONTROL	1	73	232398	FITTING	2
	255167	MANIFOLD, BODY (ONLY)	1	74	209441	FITTING	1
28	902766	PAN WLDMNT,DRIP	1	76	R13812641	GRD 8 HEX NUT 1/2-20 - PLATED	10
29	902837	TANK WELDMNT,HYDRAULIC	1	77	200604	WASHER, LOCK; 1/2	10
A	902216	PL, COVER	2	78	222615	WASHER, FLAT; 1/2 PLAIN	10
B	578833	GASKET	2	79	3501487	CS; 1/2 NC X 1 1/2 GR8	10
C	R13811014	CS; 5/16 UNC X 1 HX HD	36	80	241822	WASHER, LOCK; 3/4 (SS)	9
D	R13802621	WASHER, FLAT; 5/16	36				
E	223657	WASHER, LOCK; 5/16 HEL SPR	36				
F	R1917921	CAP	1				
G	R14340	STRAINER	1				
30	253979	VALVE, PROP RELIEF	1				
	256133	. SEAL KIT (F/253979)	1				
31	902960	PIPE	1				
32	903008	BRACKET	1				
33	218923	BALL VALVE	1				

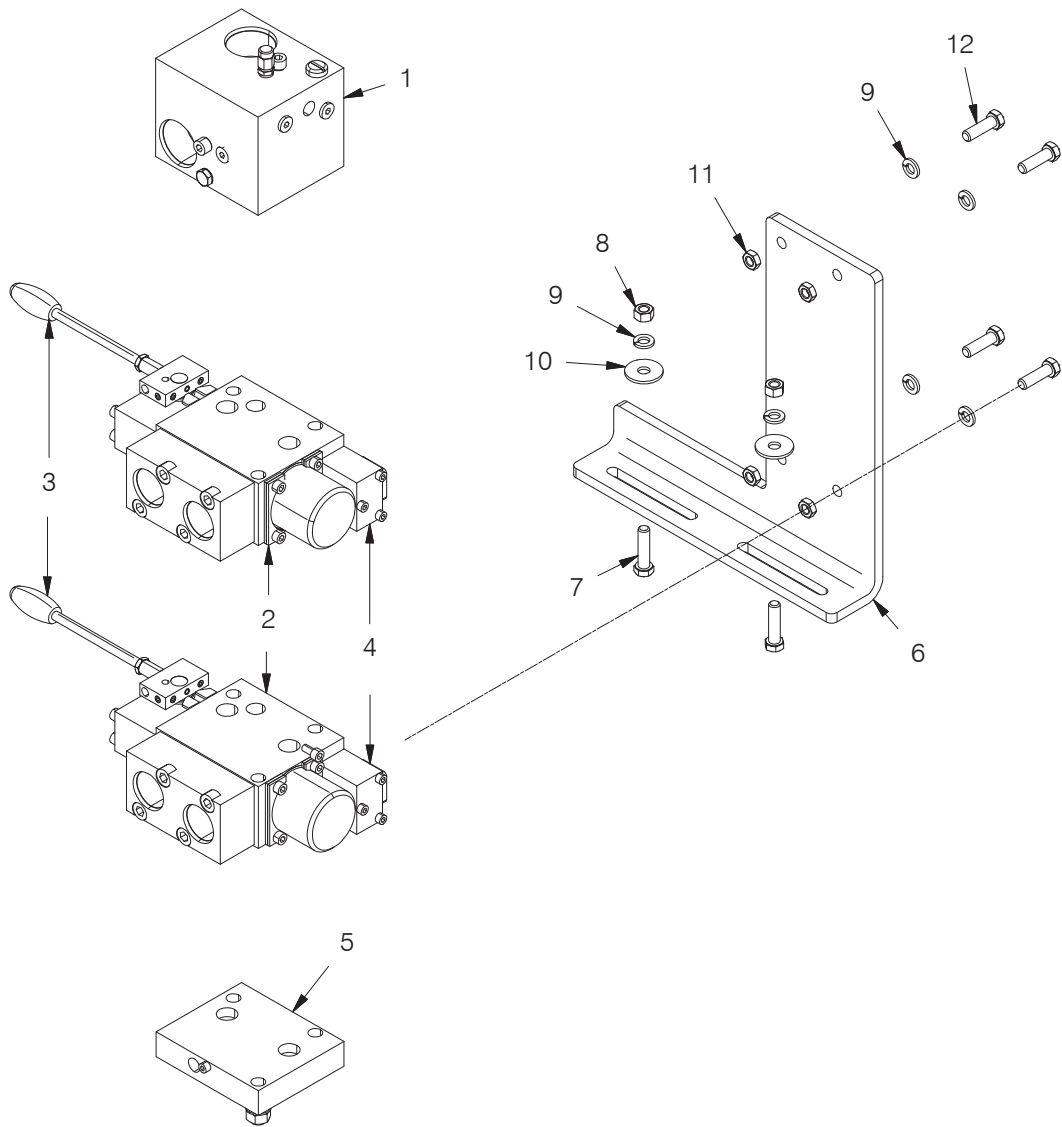
MOTOR AND PUMP



MOTOR AND PUMP

REF NO.	PART NO.	DESCRIPTION	QTY. USED	REF NO.	PART NO.	DESCRIPTION	QTY. USED
1	253671	MOTOR, ELEC;	1	16	253680	VALVE, CHECK	1
2	902953	MOTOR, MOUNT	2	17	253672	PUMP, PISTON	1
3	YSC6-3.00	5/8" KEYSTOCK @3" LONG	1	18	12666	FITTING; EL	1
4	234173	WASHER, FLAT; 3/4 (SS)	12	19	253677	PUMP, GEAR	1
5	241822	WASHER, LOCK; 3/4 (SS)	8	20	WLKS000375	3/8" LOCKWASHER - SS	2
6	234126	CAPSCREW; 3/4 NC X 2 (SS)	4	21	233465	CAPSCREW; 3/8 NC X 1 1/4 (SS)	2
7	224960	COUPLING, HALF	1	22	213917	FITTING; EL	1
8	237526	INSERT	1	23	23390	KIT, SPLIT FLANGE	1
9	253669	COUPLING	1		200604	. WASHER	2
10	R13811804	CS; 3/8 UNC X 1, SOC HD	1		201621	. CAPSCREW	2
11	234172	WASHER, FLAT; 5/8 (SS)	4		203523	. O-RING	1
12	232510	WASHER, LOCK; 5/8 SPR (SS)	4		209539	. CLAMP HALF	2
13	238183	CAPSCREW; 5/8 NC X 1 3/4 (SS)	4	24	234550	CAPSCREW; 3/4 NC X 1 3/4 (SS)	4
14	209619	FITTING; ST	1	25	R2535834	FITTING;B; EL	1
15	229449	KIT, SPLIT FLANGE	1	26	254140	ADAPTER	1
	200604	. WASHER	4	27	255077	FITTING	1
	203446	. O-RING	1	28	225370	CLAMP, T-BOLT	4
	225328	. CLAMP HALF	2	29	249266	HOSE, SUCTION	1
	230961	. CAPSCREW	4				

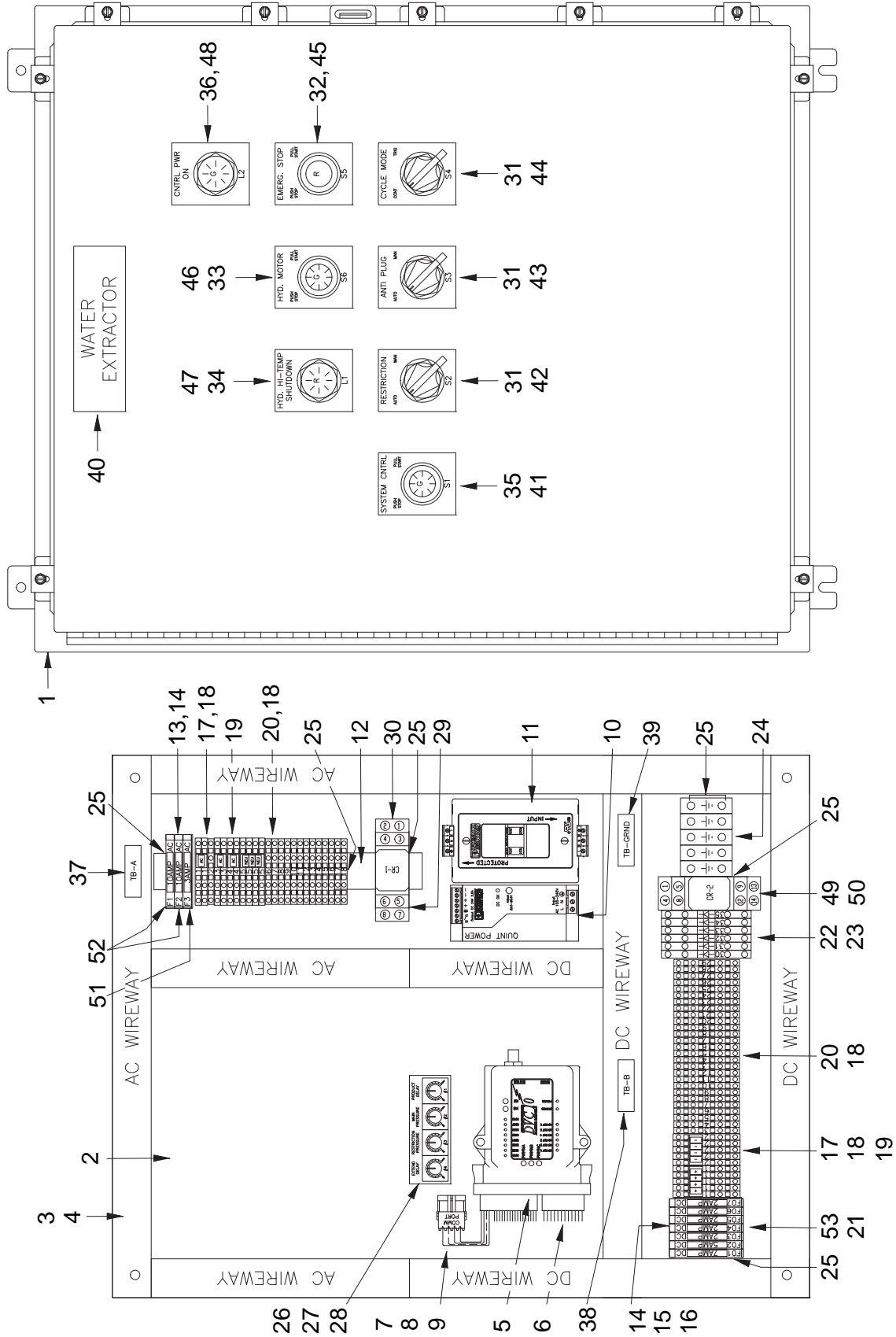
HYDRAULICS MANIFOLD



HYDRAULICS MANIFOLD

REF NO.	PART NO.	DESCRIPTION	QTY. USED
	255204	VALVE, DIRECTIONAL	
1	256135	. CONN BLOCK	1
	250838	. . KIT, SEAL	1
2	256166	. WORK SECTION	2
	250839	. . KIT, SEAL	2
3	251917	. LEVER	2
4	256130	. COIL	2
5	3503140	. PLATE, END	1
6	903008	BRACKET	1
7	233869	CAPSCREW; 3/8 NC X 1 1/2 304(SS)	2
8	NCHS000375	HEX NUT NC 3/8" - SS	2
9	233569	WASHER, LOCK; 3/8 (SS)	2
10	231853	WASHER, FLAT; 3/8 (SS)	2
11	NCJS000500	NUT, JAM; 1/2 NC (SS)	4
12	233465	CAPSCREW; 3/8 NC X 1 1/4 (SS)	4

CONTROL BOX



CONTROL BOX

REF NO.	PART NO.	DESCRIPTION	QTY. USED	REF NO.	PART NO.	DESCRIPTION	QTY. USED
	255181	CONTROL PANEL ASSEMBLY		27	256201	. POTENTIOMETER KNOB	4
1	256185	. ENCLOSURE 30 X 24 X 8	1	28	256202	. 4 HOLE POT MOUNTING BRACKET	1
2	256186	. BACK PANEL	1	29	256018	. RELAY	1
3	256187	. WIREWAY	2	30	256017	. RELAY SOCKET	1
4	256188	. WIREWAY COVER	2	31	256203	. 2 POS SEL SW MAINT	3
5	902245	. CONTROL MODULE, PROGRAMED	1	32	256204	. EM STOP PUSH/PULL MAINT	1
6	252638	. KIT, CONNECTOR;A; DVC-10	1	33	256205	. START/STOP 120 VAC LIGHT	1
7	2381551	. CONNECTOR, WIRE	1	34	256206	. IND RED LIGHT 120VAC	1
8	R7408664	. PIN, MALE	4	35	256207	. START/STOP 24VDC LIGHT	1
9	R740867	. SEAL, WIRE;	4	36	256208	. IND GREEN LIGHT 120VDC	1
10	254146	. POWER SUPPLY;	1	37	256210	. 1/2 X 2 TB-A	1
11	256209	. GFCI EM	1	38	256211	. 1/2 X 2 TB-B	1
12	256189	. DIN RAIL	1	39	256212	. 1/2 X 2 GROUND	1
13	248197	. COVER, END	3	40	256213	. 1/2 X 6.5 WATER EXTRACTOR	1
14	256190	. FUSE END PLATE	1	41	256214	. 3 X 2.5 SYSTEM CONTROL	1
15	256191	. 24V FUSE BLOCK	7	42	256215	. 3 X 2.5 RESTRICTION	1
16	256192	. 7 AMP FUSE	1	43	256216	. 3 X 2.5 ANTI PLUG	1
17	256193	. TERMINAL BLOCK	19	44	256217	. 3 X 2.5 CYCLE MODE	1
18	256194	. END PLATE	2	45	256218	. 3 X 2.5 EMERG. STOP	1
19	250697	. JUMPER	14	46	256219	. 3 X 2.5 HYD. MOTOR	1
20	256195	. TERMINAL BLOCK	37	47	256220	. 3 X 2.5 HYD HI-TEMP SHUTDOWN	1
21	256016	. 2 AMP FUSE	5	48	256221	. 3 X 2.5 CNTRL PWR ON	1
22	256196	. DIODE TERMINAL BLOCK	6	49	256020	. RELAY	1
23	256197	. END PLATE	1	50	256019	. RELAY SOCKET	1
24	256198	. GROUNDING TB'S	7	51	246933	. 10 AMP FUSE	2
25	256199	. END STOP	7	52	243609	. 3 AMP FUSE	1
26	256200	. POTENTIOMETER 5W, 10K OHM	4	53	243577	. 5 AMP FUSE	1

Part Number	Description	Page Number	Part Number	Description	Page Number
11079	FITTING, LUBE	12	250839	. . KIT, SEAL	20
11860	FITTING	16	251917	. LEVER	20
12666	FITTING; EL	16,18	252638	. KIT, CONNECTOR;A; DVC-10	22
20856	FITTING	16	253464	HOSE ASSY	12
21205	FITTING	16	253465	HOSE ASSY	12
22623	PANEL, BACK	6	253669	COUPLING	16,18
22628	RAIL	6	253671	MOTOR, ELEC;	16,18
23390	KIT, SPLIT FLANGE	16,18	253672	PUMP, PISTON	16,18
23408	FITTING	16	253673	SWITCH, TEMP	16
23945	FITTING	16	253674	FILTER, BREATHER	16
27054	RING NUT	6	253675	GAUGE, SIGHT LEVEL/TEMP	16
27663	CONNECTOR, CORD	2,6,8	253677	PUMP, GEAR	16,18
203446	. O-RING	10,14,18	253679	BALL VALVE	16
203523	. O-RING	18	253680	VALVE, CHECK	16,18
206636	HOSE ASSEMBLY	14	253691	. SEAL KIT	12
207825	HOSE ASSEMBLY	14	253975	VALVE, PROP RELIEF	16
209137	FITTING	16	253979	VALVE, PROP RELIEF	16
209142	FITTING	4,14	253991	VALVE, 3-WAY W/MANUAL OVERRIDE	16
209323	FITTING	16	254004	FILTER ASSEMBLY, HYDRAULIC OIL	16
209441	FITTING	16	254006	THERMOWELL	16
209443	FITTING	16	254010	BALL VALVE	16
209488	FITTING	14,16	254135	FITTING, HA	16
209533	FITTING	16	254140	ADAPTER	16,18
209539	. CLAMP HALF	18	254146	. POWER SUPPLY;	22
209619	FITTING; ST	4,14,16,18	254163	SENSOR, PROX	2
209714	FITTING	4,14,16	254615	GUIDE RAIL	2
209759	FITTING	16	255077	FITTING	16,18
211560	FITTING	16	255121	MANIFOLD (ONLY), CONTROL	16
213114	FITTING	16	255181	CONTROL PANEL ASSEMBLY	22
213917	FITTING; EL	16,18	255204	VALVE, DIRECTIONAL	16,20
214203	GAUGE	16	255464	HOSE ASSEMBLY	14
215250	FITTING	16	255467	HOSE ASSEMBLY	14
218923	BALL VALVE	16	255468	HOSE ASSEMBLY	14
222886	FITTING	16	255469	HOSE ASSEMBLY	14
223638	FITTING	16	255470	HOSE ASSEMBLY	14
223657	WASHER, LOCK; 5/16 HEL SPR	16	255471	HOSE ASSEMBLY	14
223696	WASHER, LOCK; 1/4	2	255472	HOSE ASSEMBLY	14
224298	FITTING	16	255473	HOSE ASSEMBLY	14
224411	CLAMP	4	255506	HOSE ASSEMBLY	14
224960	COUPLING, HALF	16,18	255507	HOSE ASSEMBLY	14
225214	CLAMP	2,4	255508	HOSE ASSEMBLY	14
225328	. CLAMP HALF	10,14,18	255509	HOSE ASSEMBLY	14
225369	T-BOLT CLAMP	16	255510	HOSE ASSEMBLY	14
225370	CLAMP, T-BOLT	18	255511	HOSE ASSEMBLY	14
225648	SNUBBER, GAUGE	16	255722	HEAT EXCHANGER	16
227384	FITTING	16	255723	WATER VALVE, MODULATING	16
229384	FITTING	16	255996	. FILTER ELEMENT	16
229449	KIT, SPLIT FLANGE	10,14,16,18	255997	. INDICATOR, ELEC.	16
231135	GAUGE	16	256016	. 2 AMP FUSE	22
231921	FITTING; EL	12	256017	. RELAY SOCKET	22
232237	TERMINAL BLOCK 280-641	6	256018	. RELAY	22
232398	FITTING	16	256019	. RELAY SOCKET	22
236926	JUMPER, HORIZONTAL	6	256020	. RELAY	22
237203	FITTING, FF	14	256130	. COIL	16,20
237526	INSERT	16,18	256131	. SEAL KIT (F/253975)	16
238183	CAPSCREW; 5/8 NC X 1 3/4 (SS)	18	256132	. SEAL KIT (F/253991)	16
239317	TERMINAL BLOCK 280-646	6	256133	. SEAL KIT (F/253979)	16
239519	FLAT WASHER	16	256135	. CONN BLOCK	20
241761	STOP, END 249-117	6	256143	HOSE ASSEMBLY	14
243248	FITTING	14	256144	HOSE ASSEMBLY	14
243577	. 5 AMP FUSE	22	256166	. WORK SECTION	20
243609	. 3 AMP FUSE	22	256185	ENCLOSURE 30 X 24 X 8	22
244112	SWITCH, PROX	8	256186	. BACK PANEL	22
246933	. 10 AMP FUSE	22	256187	. WIREWAY	22
248197	. COVER, END	22	256188	. WIREWAY COVER	22
249266	HOSE, SUCTION	16,18	256189	. DIN RAIL	22
250697	. JUMPER	22	256190	. FUSE END PLATE	22
250838	. . KIT, SEAL	20	256191	. 24V FUSE BLOCK	22

Part Number	Description	Page Number	Part Number	Description	Page Number
256192	. 7 AMP FUSE	22	902953	MOTOR, MOUNT	18
256193	. TERMINAL BLOCK	22	902960	PIPE	16
256194	. END PLATE	22	902993	TUBE ASSEMBLY	16
256195	. TERMINAL BLOCK	22	903000	JUNCTION BOX ASSY; WE4B/WE5A	6
256196	. DIODE TERMINAL BLOCK	22	903001	BOX	6
256197	. END PLATE	22	903008	BRACKET	16,20
256198	. GROUNDING TB'S	22	903231	COMBINER MANIFOLD	4
256199	. END STOP	22	2381551	. CONNECTOR, WIRE	22
256200	. POTENTIOMETER 5W, 10K OHM	22	2509118	HOSE ASSEMBLY	14
256201	. POTENTIOMETER KNOB	22	3501487	CS; 1/2 NC X 1 1/2 GR8	16
256202	. 4 HOLE POT MOUNTING BRACKET	22	3503140	. PLATE, END	20
256203	. 2 POS SEL SW MAINT	22	9413503	CAPSCREW; 1/4 NC X 1 3/4 GR5	2
256204	. EM STOP PUSH/PULL MAINT	22	9416918	NUT, SERRATED; 1/4 NC GR5	2
256205	. START/STOP 120 VAC LIGHT	22	18423W	WASHER #10	2
256206	. IND RED LIGHT 120VAC	22	221703W	NUT, HEX; 1/4 UNC	2
256207	. START/STOP 24VDC LIGHT	22	221712W	HEX NUT	16
256208	. IND GREEN LIGHT 120VDC	22	BKT0023959	BRACKET	2
256209	. GFCI EM	22	BKT0026116	BRACKET,SENSOR	2
256210	. 1/2 X 2 TB-A	22	BSH0026123	FITTING	2
256211	. 1/2 X 2 TB-B	22	F000008511	HAIRPIN FOR CYLINDER PIN	12
256212	. 1/2 X 2 GROUND	22	F000008221	1/4 MALE CONNECTOR	2
256213	. 1/2 X 6.5 WATER EXTRACTOR	22	FD00007111	DECAL;D; FREEMAN (25" X 4" WHITE)	2
256214	. 3 X 2.5 SYSTEM CONTROL	22	GRM0005008	1/2" STD SNAP BUSHING GROMMET	6
256215	. 3 X 2.5 RESTRICTION	22	HAN0000817	HANDLE, GRAB	2
256216	. 3 X 2.5 ANTI PLUG	22	HOS0027352	HOSE ASSY	12
256217	. 3 X 2.5 CYCLE MODE	22	HOS0033050	HOSE ASSY	12
256218	. 3 X 2.5 EMERG. STOP	22	HOS036662A	HOSE ASSEMBLY	14
256219	. 3 X 2.5 HYD. MOTOR	22	HYD5725050	FITTING	14
256220	. 3 X 2.5 HYD HI-TEMP SHUTDOWN	22	HYD6600404	1/4 FEMALE CONNECTOR	2
256221	. 3 X 2.5 CNTRL PWR ON	22	MNT0024567	PL,COVER	8
529950	FITTING	16	NP00000100	PLATE; MODEL/SERIAL #	4
578833	GASKET	16	PIN0375125	3/8 SNAPPER PIN	2
900194	PLATEUNGER FRAME	10	PLG0021900	PLATE, TOP	10
900923	INFEED CHUTE ASSY WE5	2	PLG0021920	PLATE,BTM	10
900965	RESTRICTION RAIL ASSY WE5	12	PLG0025903	PLATE,BACKUP	10
901016	ROD	10	R12579595	FITTING	12
901027	WIPER,LH	10	R13801972	FITTING	16
901028	WIPER,RH	10	R14340	STRAINER	16
901029	PLATE,LH BACKUP	10	R1917921	CAP	16
901030	PLATE,RH BACKUP	10	R2535834	FITTING;B; EL	16,18
901031	WIPER,LH TOP	10	R7408664	. PIN, MALE	22
901032	WIPER,RH TOP	10	R740867	. SEAL, WIRE;	22
901033	PLATE,LH TOP	10	RAL0021932	PL,RAIL	12
901034	PLATE,RH TOP	10	RAL0021933	PL,BACKUP	12
901056	BAR,BTM	10	RAL0021934	BAR;UHMW	12
901057	PLATE,BTM	10	RAL0021935	PL,BACKUP	12
901099	PIN WELDMNT,PIVOT	10	SHM0021922	SHIM	10
901156	CYLINDER ASSEMBLY	10	SMFS000304	FLAT HD MS NC 3/8 X 1-1/2 - SS	10
901230	BUSHING	12	SMFS000308	FLAT HD MS NC 3/8" X 2-1/4 - SS	12
901363	. KIT, PACKING,6"	10	SWI0059037	SWITCH, FLOAT	16
901481	PIN PIVOT; WE4&5 RESTRICTOR RAIL	12	TBE0261300	TUBE ASSY	2
901604	PIN WELDMNT,PIVOT	10	VLV0000400	1/4 NEEDLE VALVE	2
901645	PIN	12	VLV0026113	AIR VALVE	2
901646	PIN,BOTTOM	12	WAS0093781	THREAD SEALING WASHER	2
901648	PL, OUTER DOOR	2	WND0024498	WINDOW	2
901651	BLOCK,STOP	2	YSC6-3.00	5/8" KEYSTOCK @3" LONG	18
901754	TUBE ASSEMBLY	14			
901755	TUBE ASSEMBLY	14			
902216	PL, COVER	16			
902245	. CONTROL MODULE,PROGRAMED	22			
902279	TUBE ASSEMBLY	16			
902345	CYLINDER	12			
902753	FRAME ASSY,MAIN WE5	2			
902764	PL,INNER DOOR	2			
902766	PAN WLDMNT,DRIP	16			
902837	TANK WELDMNT,HYDRAULIC	16			
902889	MOUNTING; PLUNGER SENSOR	8			
902892	PLATE,SHIM	10			



To find a dealer in your area,
Call: 503-625-2560,
Fax: 503-625-7269, or

Visit our website: <http://www.alliedsystems.com>

Allied Systems
COMPANY

PB000WE508
Printed in USA