

Parts Manual

Model WE4 Water Extractor

Starting in 2022, with
Serial Number: ASC-0WE4-467
& ASC-0WE4-468

A Product of

Allied Systems
COMPANY

Sherwood, Oregon USA

PB000WE424



Important: Be certain to specify the
serial number of your Water Extractor
when ordering parts.



WARNING

California Proposition 65 Warning

Diesel engine exhaust and some of its constituents are known to the State of California to cause cancer, birth defects, and other reproductive harm.

Battery posts, terminals and related accessories contain lead and lead compounds, chemicals known to the State of California to cause cancer, birth defects, and other reproductive harm. Wash hands after handling.

Other chemicals in this vehicle are also known to the State of California to cause cancer, birth defects, and other reproductive harm.

Section 0

General Information

| Section..... | Page Number |
|-----------------------------|--------------------|
| Introduction | 0-2 |
| Safety | 0-3 |
| Serial Number Location..... | 0-8 |
| Table of Contents | 0-9 |

Introduction

This manual contains all components of the water extractor that can be separately identified as well as parts necessary for equipment support. You can find the parts page relevant to your project in either the Table of Contents (page i) or in the Parts Index (page i).

Illustrations

Illustrations are provided whenever possible to represent component parts and the mounting location of those parts. The numbered labels correspond to the item numbers in the parts list.

Parts Lists

Component parts lists are presented in a 5-column format:

Item: Index numbers found in this column correspond to the numbers found on the respective parts location illustration. Some items are shown for reference purposes only to illustrate their relationship to other systems.

Notes: This column identifies footnotes applicable to specified items.

Part Number: This column lists the Allied Systems Company Part Number.

Quantity: This column lists the total number of a specific item required per assembly or subassembly. This number may not necessarily be the number of items used in the end item or system. Only one set of components is listed whenever the components of two assemblies are the same.

“A/R” (as required) identifies bulk items whose length or other dimension must be specified when requisitioning.

“Ref” identifies items shown for reference purposes only to illustrate their relationship to other systems.

“NSS” (not sold separately) identifies items such as valve housings and spools, ring gears and pinions, etc., which must be ordered as a set because they are closely mated at manufacture.

Description: This column lists the item nomenclature along with those modifiers necessary to identify the item. Additionally, cross references for repairable subassemblies are listed in this column. One dot preceding the description indicates that the item is a component part of the previously listed item or assembly with no dot. Two dots indicate that the item is part of the previously listed item with one dot.

Example:

Engine Installation
 . Engine Assembly
 . . Manifold Assembly
 . . Control Box Assembly
 . . . Module Assembly

The Engine Assembly is a first level subassembly of the Engine Installation as indicated with one dot. The Manifold Assembly and the Control Box Assembly are second level components of the Engine Assembly as indicated by the two dots. The Module Assembly is a third level component of the Control Box Assembly which is indicated with three dots.

Safety

Do not clean, lubricate, or make any adjustments on the equipment while it is in operation.

Do not start the equipment until you are certain everyone is clear of the machine and have ensured there are no tools on the unit.

Do not work around equipment in loose clothing.

Do not attempt to service any equipment while the motor is running.

Inspection Covers and Safety Shields should only be removed by authorized service persons.

After servicing **do not** place the equipment back into operation until all Safety Shields and Devices have been replaced. Operation without Safety Shields and Devices can place the operator into a hazardous situation.

Do not open or work on the In-Feed System until the flow of material has been stopped and the Water Extractor Motor has been turned off.

Do not make any adjustments or reach under any load bearing surfaces while they are loaded.

INSTRUCT ALL OPERATORS ON SAFETY PRECAUTIONS.



WARNING:

Some illustrations in this parts list show the water extractor without shields to allow for a better view of the area being addressed. The water extractor should never be operated with any of the safety shields removed.

Safety

General

The following pages contain general safety warnings which supplement specific warnings and cautions that can be found in the operators manual (PB0WE4AOPS) that is included with this unit. All Freeman manuals can also be found online at www.alliedsystems.com. All electrical and hydraulic equipment is potentially hazardous. You must thoroughly review and understand this Safety Section before attempting to operate, troubleshoot, maintain or service this water extractor.

Time, money and effort have been invested in making your Water extractor a safe product. The dividend from this investment is YOUR PERSONAL SAFETY.

However, it must be realized that no power-driven equipment can be any safer than the person behind the controls. If you don't operate and maintain your Freeman water extractor safely, our efforts will have been in vain.

The safety instructions and warnings, as documented in this manual and operators manual shipped with the machine, provide the most reliable procedures for the safe operation and maintenance of your water extractor. It's your responsibility to see that they are carried out.

Allied Systems Company cannot anticipate all worksite conditions, local regulations, etc. It is the responsibility of the end user to be aware of and obey any specific worksite, local, state, or national regulations or procedures that are applicable to operating this water extractor.

NOTE: All possible safety hazards cannot be anticipated so as to be included in this manual. Therefore, you must always be alert to potential hazards that could endanger personnel and/or damage the equipment.

Safety Symbols

The following symbols/terms are used to emphasize safety precautions and notices:



DANGER

The “**DANGER**” symbol indicates a hazardous situation which, if not avoided, will result in death or serious injury. Carefully read the message that follows to prevent serious injury or death.



WARNING

The “**WARNING**” symbol indicates a hazardous situation which, if not avoided, could result in death or serious injury. Carefully read the message that follows to prevent serious injury or death.



CAUTION

The “**CAUTION**” symbol indicates a hazardous situation which, if not avoided, could result in minor or moderate injury, or equipment damage. Carefully read the message that follows to prevent minor or moderate injury.

NOTICE

The “**NOTICE**” symbol alerts to a situation that is not related to personal injury but may cause equipment damage.

NOTE: ...

The term “**NOTE**” highlights operating procedures or practices that may improve equipment reliability and/or personnel performance, or to emphasize a concept.

Safety

Operation Warnings



WARNING

Warning: Failure to observe the following safety rules may result in extreme personal injury, dismemberment or death. It is the operator's responsibility to understand the proper and safe use of this water extractor.

Make sure that you read, understand, and obey all of the safety precautions and operating instructions in the operator's manual.

- Keep this Operator's Manual and the Safety Card (Allied form #89-120) with the water extractor at all times.
- Do not operate the water extractor unless you are authorized and trained to do so. If it has been some time since you last operated the water extractor, re-familiarize yourself with the water extractor before starting, then proceed slowly.
- Do not operate the water extractor if you are aware of any malfunctions, needed maintenance or repairs.
- Stop the water extractor immediately if any problems arise.
- Never operate the water extractor without all safety shielding in place.
- Keep hands, feet, hair, jewelry and clothing away from moving parts.
- Avoid wearing loose clothing which can easily be caught in moving parts.
- Always use lights when working at night or in low light conditions.
- Know your job-site rules. Some have site-specific directions and procedures. The methods outlined in the operators manual provide a basis for safe operation of the water extractor. Because of special conditions, your company's procedures may be somewhat different from those shown in the operators manual.
- Do not start the water extractor if the key has been marked with a "DO NOT START" or "RED" tag.
- Alert personnel in the area before starting the water extractor, and make sure everyone is clear.
- Each country has its own safety legislation. It is in the operator's own interest to be conversant with these regulations and to comply with them in full. This also applies to local bylaws and regulations in force on a particular worksite.
- Should the recommendations in this manual deviate from those in the user's country, the national regulations should be followed.
- Never attempt to disconnect any of the safety devices built into the water extractor.

Safety

Hydraulic Hazards

Be aware of the hazards of pressurized hydraulics:



- Wear personal protective equipment, such as gloves and safety glasses, whenever servicing or checking a hydraulic system.
- Assume that all hydraulic hoses and components are pressurized. Relieve all hydraulic pressure before disconnecting any hydraulic line.
- Never try to stop or check for a hydraulic leak with any part of your body; use a piece of cardboard to check for hydraulic leaks.
- Small hydraulic hose leaks are extremely dangerous, and can inject hydraulic oil under the skin, even through gloves.
- Infection and gangrene are possible when hydraulic oil penetrates the skin. See a doctor immediately to prevent loss of limb or death.

Maintenance Safety

- Perform all routine maintenance outlined in this Operator's Manual in the time intervals indicated.
- Maintenance, lubrication and repair of this machine can be dangerous unless performed properly. In order to ensure safety, each person working on this water extractor must have the necessary skills, information, tools and equipment, and satisfy himself that his work method is safe, correct, and meets his own company's requirements.
- Do not attempt to make adjustments, or perform repairs unless you are authorized and qualified to do so.

- Never attempt to service energized equipment.
- Always shut off and secure power when servicing the water extractor.
- Disengage the water extractor and shut off power, and wait for all movement to stop before adjusting, lubricating, cleaning, or servicing the water extractor.
- Tag the key switch with a "DO NOT START" sign and/or remove the key.
- Always perform all maintenance and lubrication procedures with the water extractor on level ground.
- Any unauthorized modifications made to the water extractor by the customer or parties other than Allied Systems will relieve Allied Systems Company and your Freeman dealer of any liability for damage or injury.
- Replace any worn parts only with genuine Freeman parts. Call your dealer for assistance.
- Unless specified in service procedures, never attempt maintenance or lubrication procedures while the water extractor is turned on.
- Before making adjustments to the electrical system, disconnect the battery. An electrical spark could cause a fire, explosion or severe burns.



Safety

Safety Equipment

- Ensure test equipment is in good condition.
- If an instrument must be held while taking measurements, ground the case of the instrument before energizing equipment.
- Do not touch live equipment or personnel working on live equipment while holding a multimeter. Some types of measuring devices should not be grounded—do not hold such devices while taking measurements.
- Prevent personal injury or equipment damage by using a lifting device with a lifting capacity greater than twice the weight of any equipment to be lifted.
- Always use personal protective equipment (PPE) appropriate to the situation. This may include the use of hearing protection, eye protection, a respirator, a hard hat, leather gloves, steel toed boots, etc.



Electrical Hazards

- An electric shock could be fatal. Ensure power to the water extractor is “OFF” before opening electrical panels.
- All electrical cables and connectors must be in good condition (free of corrosion, damage, etc). Use caution in wet weather to avoid danger from electrical shock. Never attempt electrical testing or repair while standing in water.
- Do not wear electrically conductive jewelry, clothing, or other items while working on the electrical system.



Compressed Air Hazards

- When using compressed air to dry parts, pressure should not exceed 30 psi (200 kPa).
- Air pressure penetrating your skin can be fatal. Never direct compressed air at anyone.

Serial Number Location and Identification

Each Freeman Water Extractor is identified by means of a water extractor model number and serial number. As a further identification, all power units are provided with a serial number.

To ensure prompt, efficient service when ordering parts or requesting repairs from your authorized Freeman dealer, record the serial numbers in the spaces provided.

WATER EXTRACTOR SERIAL NUMBER _____

Front of water extractor frame under electric motor.

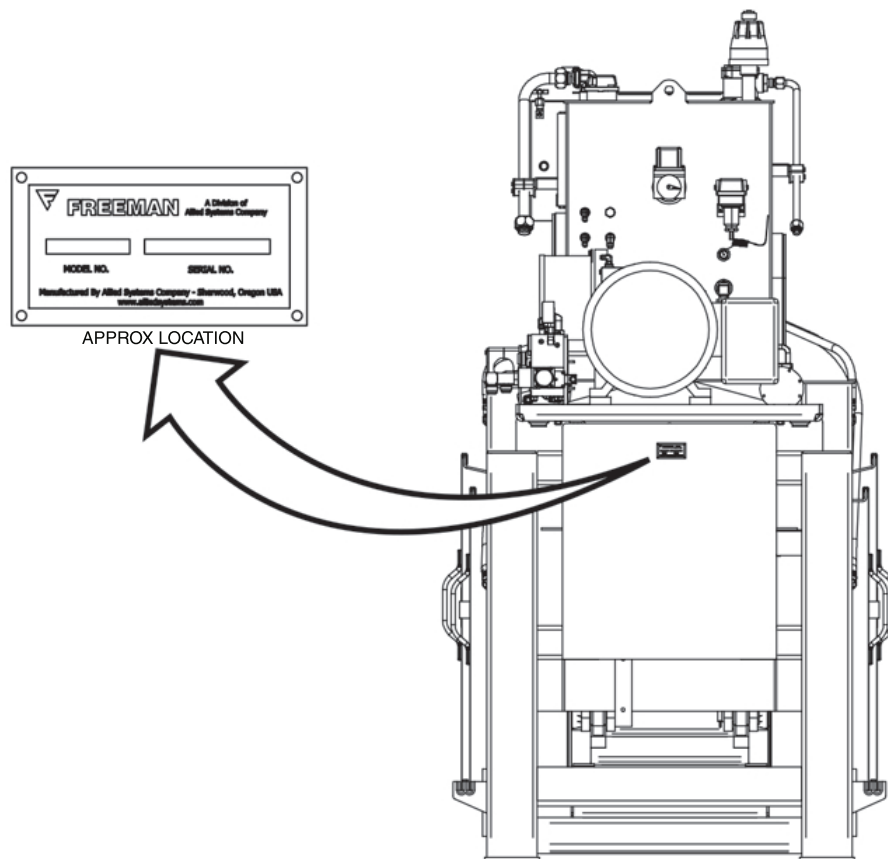
POWER UNIT SERIAL NUMBER

Electric Motor- _____

Left side, near connection box.

NOTE:

The motor and pump end is considered the front of the water extractor. The sides are described as left-hand side and right-hand side as viewed from behind while facing the discharge end of the water extractor.



Starting with ASC-0WE4-467 & ASC-0WE4-468

Table of Contents

| | |
|--------------------------------------|-----------------------------------|
| Section 1 | Main Assembly |
| Water Extractor Assembly (WE4) | 1-3 |
| . Plunger & Main Cylinder | 1-6 |
| . Infeed Chute | 1-7 |
| Section 2 | Electrical System |
| Electrical System..... | 2-3 |
| . Control Panel | 2-4 |
| Section 3 | Hydraulic/Power System |
| Power Unit (460 Vac Motor)..... | 3-3 |
| . Hydraulic Tank..... | 3-6 |
| . Control Manifold | 3-7 |
| . Junction Box | 3-8 |
| Hoses and Fittings..... | 3-9 |

This page is intentionally left blank.

Section 1
Main Assembly

Water Extractor Assembly (WE4) 1-3

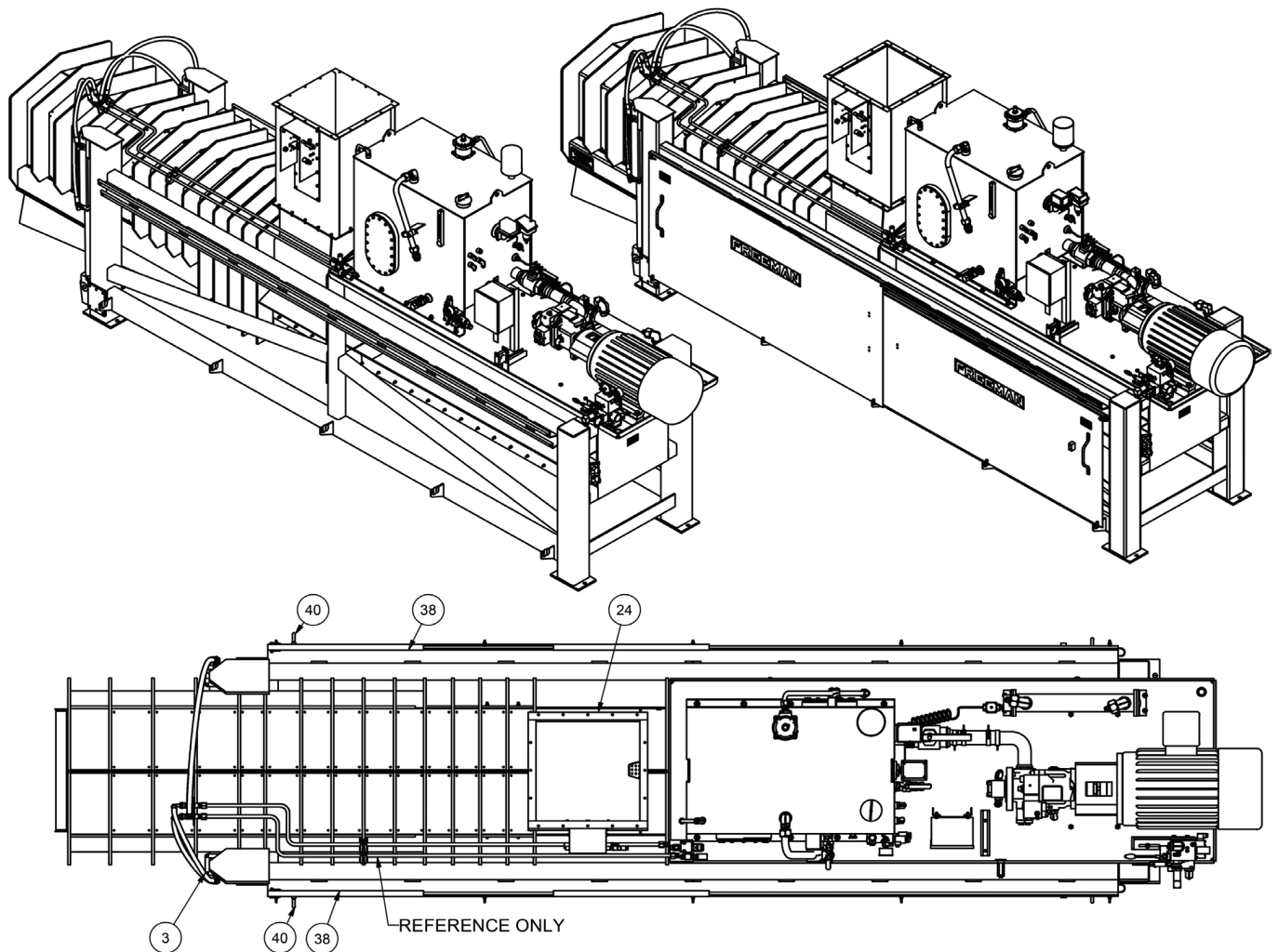
 . Plunger & Main Cylinder 1-6

 . Infeed Chute 1-7

This page is intentionally left blank.

Water Extractor Assembly (WE4)

Page 1 of 3

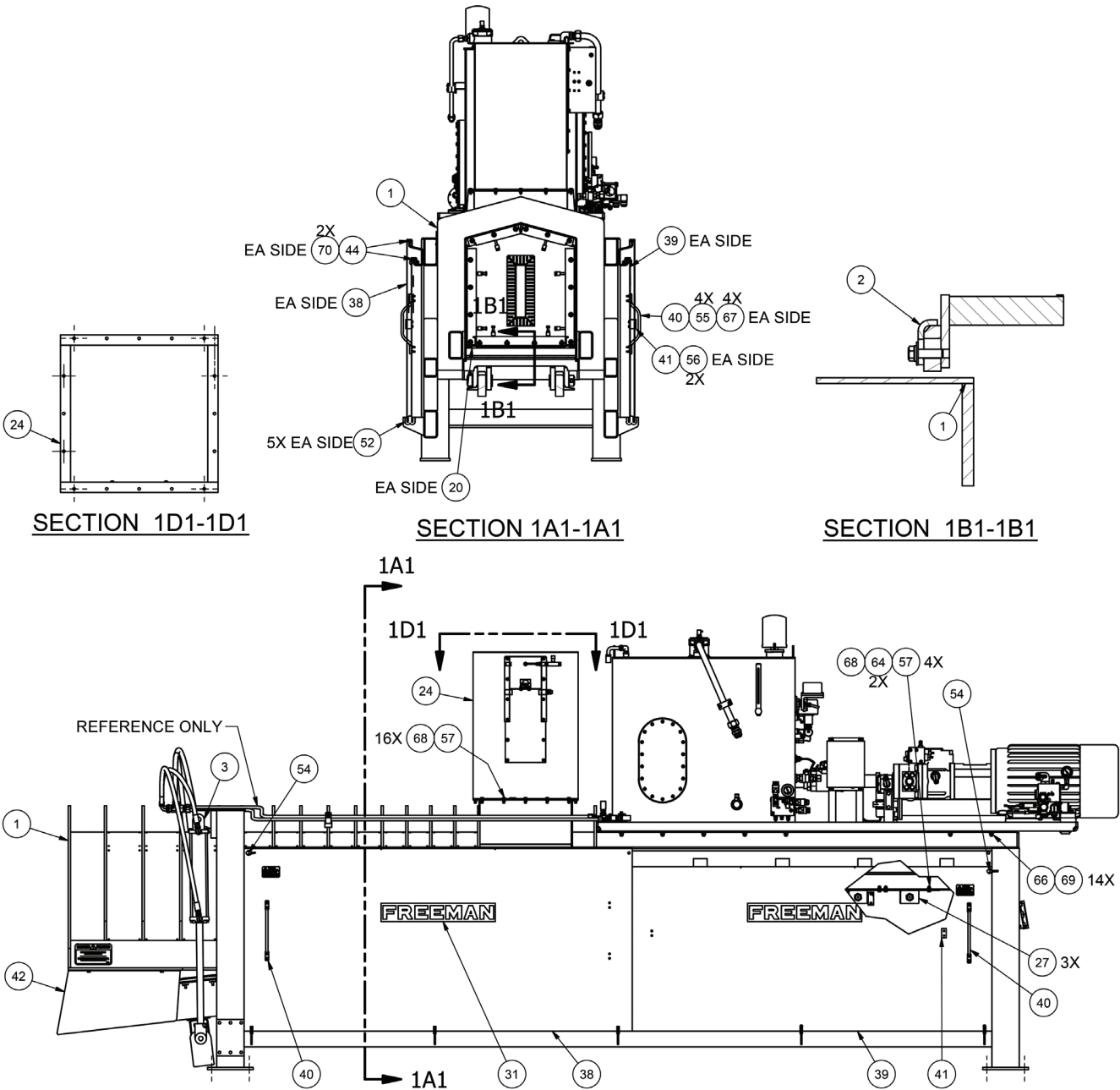


| Item | Part No. | Qty | Description | Item | Part No. | Qty | Description |
|------|---------------|------|---------------------------------|------|-----------------------|-------|--------------------|
| | 902451 | | Water Extractor Assembly | | | | |
| 1 | 902468 | 1 | . Main Frame | 51 | 902172 | 1 | . Rail, Restrictor |
| 2 | *a 903361 | 1 | . Plunder & Main Cylinder | 52 | 225871 | 4.17' | . Trim, Edge |
| 3 | 910586 | 2 | . Cylinder Hydraulic | 54 | PIN0375125 | 4 | . Pin, Snapper |
| 18 | RAL0021933 | 2 | . Plate | 55 | 237671 | 16 | . Capscrew |
| 19 | RAL0021935 | 2 | . Plate, Backup | 56 | Y01C-0508 | 4 | . Capscrew |
| 20 | PLG0021918 | 2 | . Rail | 57 | 234129 | 22 | . Capscrew |
| 24 | *b 903362 | 1 | . Infeed Chute Assembly | 58 | 233866 | 4 | . Capscrew |
| 27 | 903491 | 3 | . Plate, Mounting | 59 | Y09G-0628 | 4 | . Capscrew |
| 29 | 903488 | 2 | . Pivot Pin | 60 | 233860 | 2 | . Capscrew |
| 31 | 910537 | 1 | . Freeman Decal | 61 | SMFS000204 | 76 | . Screw, Machine |
| 33 | PLG0021919 | 2 | . Rail | 62 | SMFS000308 | 20 | . Screw, Machine |
| 36 | RAL0021934 | 2 | . Rail, Restrictor | 63 | WASS000143 | 20 | . Washer |
| 37 | RAL0021932 | 2 | . Rail, Restrictor | 64 | 233882 | 12 | . Washer |
| 38 | 902502 | 2 | . Plate, Outer | 66 | 221771W | 14 | . Washer |
| 39 | 902501 | 2 | . Plate, Inner | 67 | 228413 | 16 | . Hex Nut |
| 40 | HAN0000817 | 4 | . Handle | 68 | 228461 | 98 | . Nut |
| 41 | 901651 | 2 | . Block, Stop | 69 | 223587 | 14 | . Locknut |
| 42 | 902467 | 1 | . Plate, RH | 70 | 243588 | 8 | . Rivet, Pop |
| 43 | 902466 | 1 | . Plate, LH | 71 | 94692 | 1 | . Clamp |
| 44 | 254617 | 655" | . Rail Guide | | | | |
| 47 | 903487 | 2 | . Lock Collar | | | | |
| 48 | 231853 | 8 | . Washer | | | | |
| 50 | 231851 | 26 | . Nut, Esna | | | | |
| | | | | *a | See Separate Coverage | | (See Page 1-6) |
| | | | | *b | See Separate Coverage | | (See Page 1-7) |

Rev H

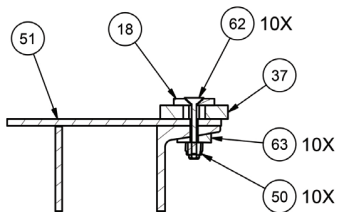
Water Extractor Assembly (WE4)

Page 2 of 3

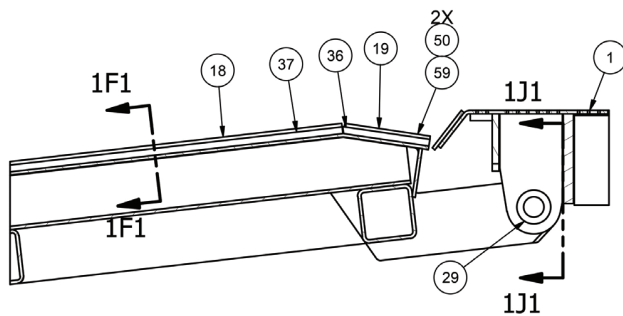


Water Extractor Assembly (WE4)

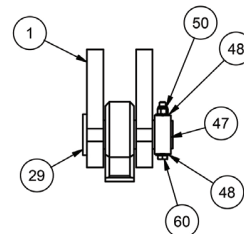
Page 3 of 3



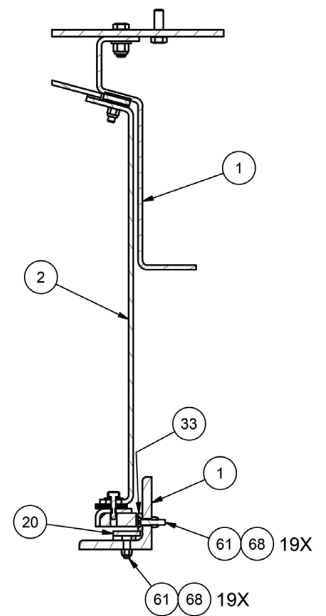
SECTION 1F1-1F1



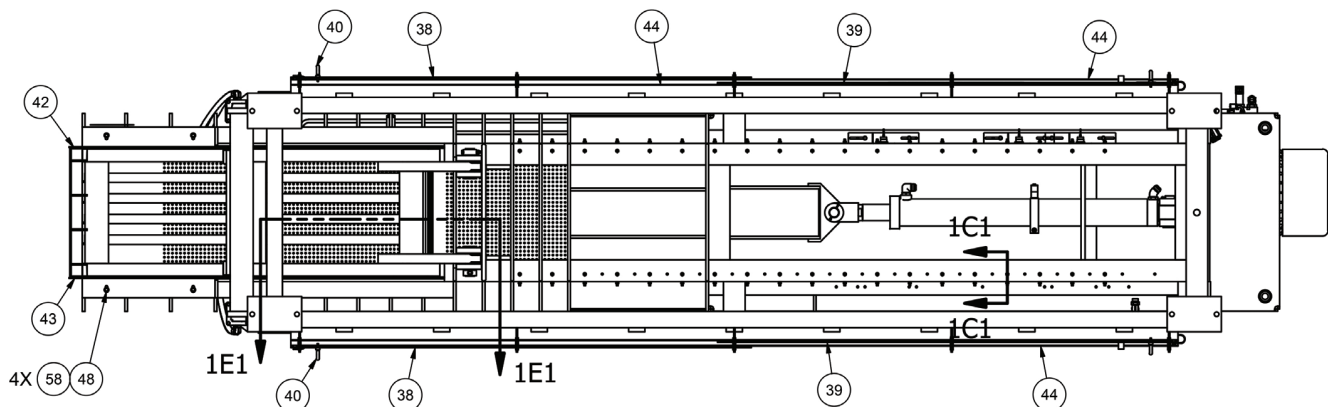
SECTION 1E1-1E1
EA SIDE



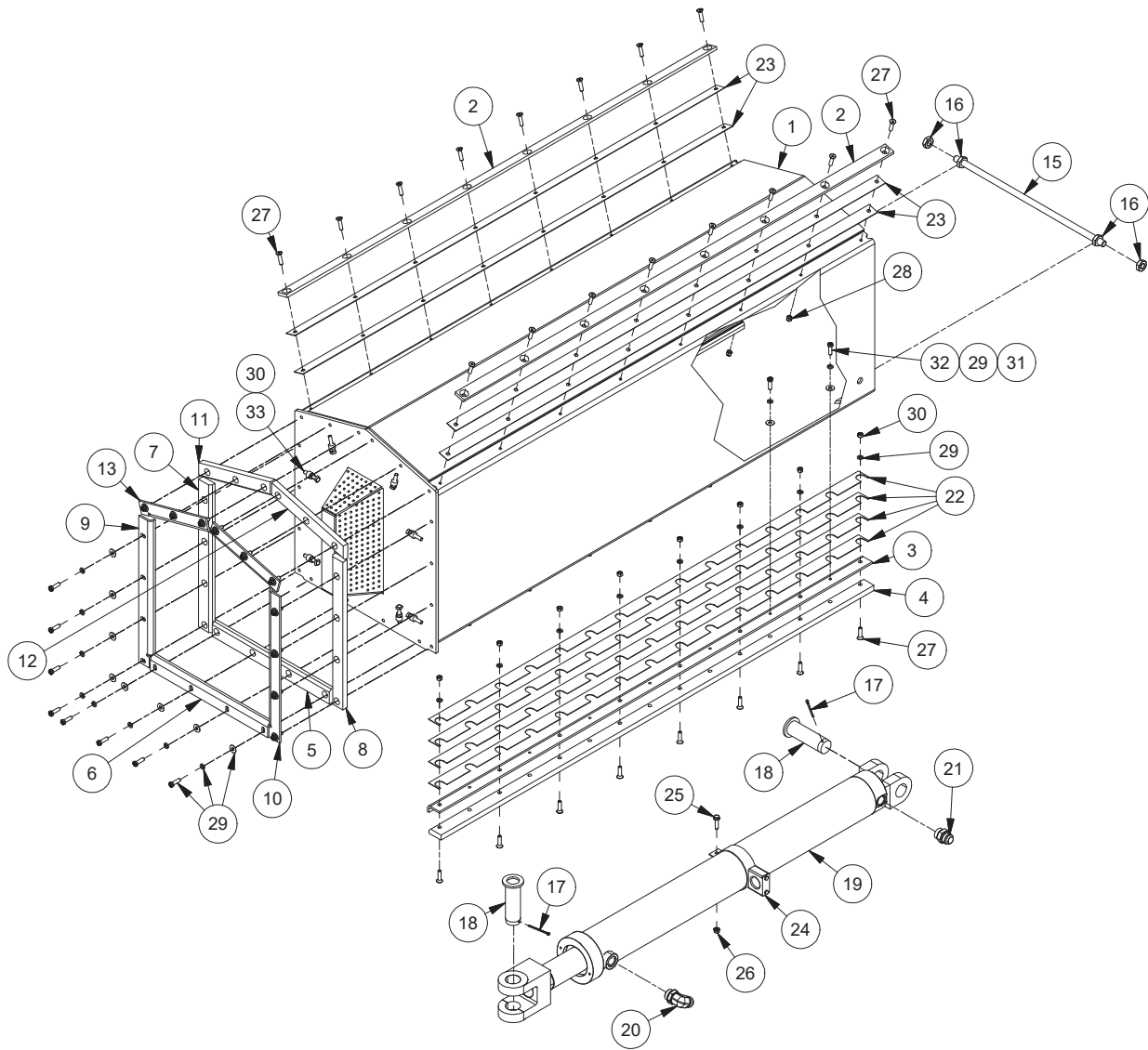
SECTION 1J1-1J1



SECTION 1C1-1C1



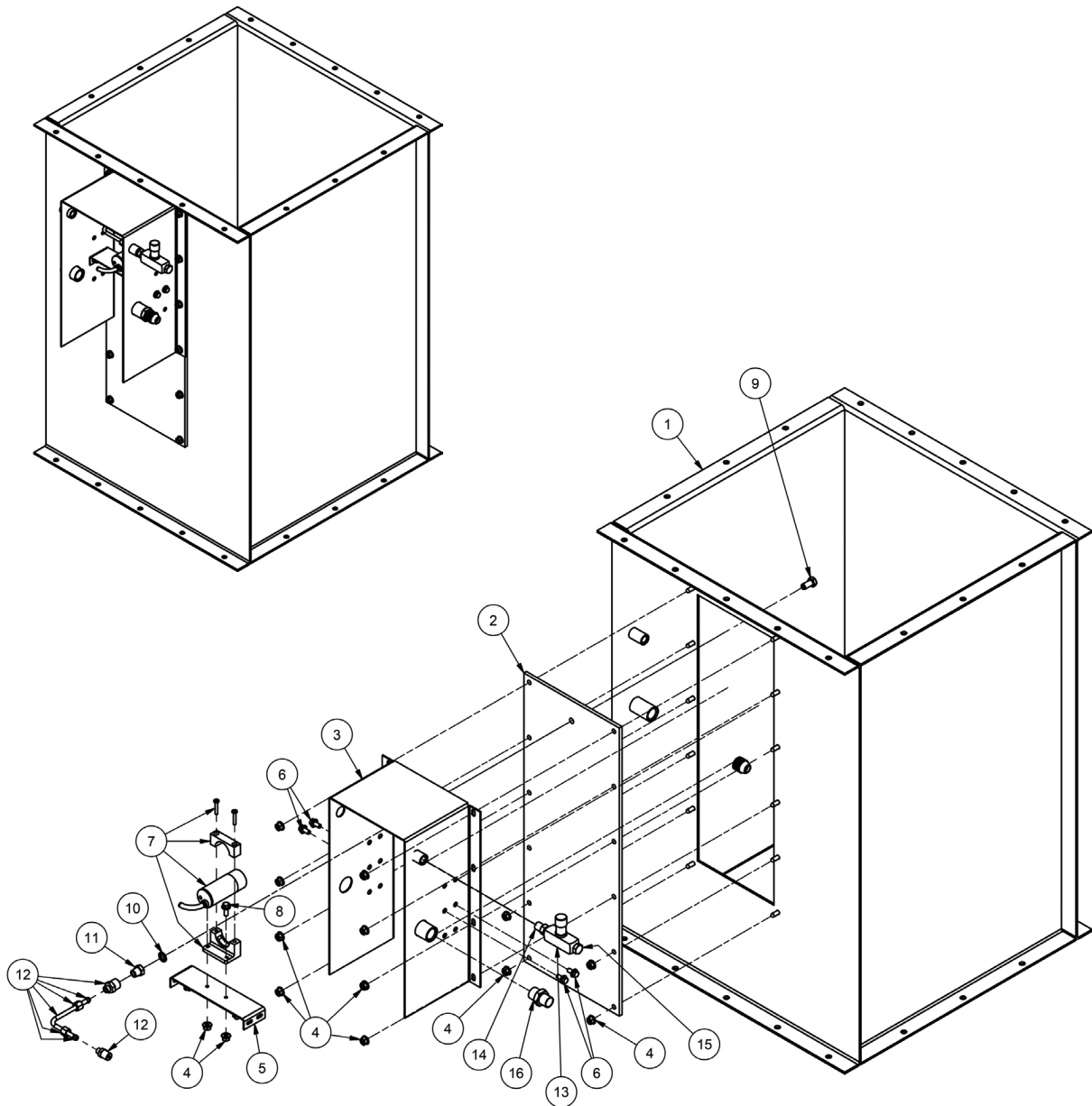
Plunger & Main Cylinder



| Item | Part No. | Qty | Description | Item | Part No. | Qty | Description |
|-------------------------------------|------------|-----|-------------------------|------|------------|-----|------------------|
| 903361 Plunger/Main Cylinder | | | | | | | |
| 1 | PLG0025503 | 1 | . Frame, Plunger | 19 | 253969 | 1 | . Cylinder |
| 2 | PLG0021900 | 2 | . Slide, Top Plunger | | 256463 | 1 | . Seal Kit |
| 3 | PLG0025903 | 2 | . Plate, Backup | 20 | 209715 | 1 | . Fitting |
| 4 | PLG0021920 | 2 | . Slide, Bottom Plunger | 21 | 209147 | 1 | . Fitting |
| 5 | PLG0021923 | 1 | . Bar, Bottom | 22 | SHM0021922 | 8 | . Shim |
| 6 | PLG0021924 | 1 | . Plate, Bottom Backup | 23 | 902892 | 4 | . Plate, Shim |
| 7 | PLG2192500 | 1 | . Plate, LH | 24 | 903355 | 1 | . Clamp Weldment |
| 8 | PLG2192501 | 1 | . Plate, RH | 25 | SMS0000180 | 1 | . Screw, Ser Flg |
| 9 | PLG2192600 | 1 | . Plate, LH Backup | 26 | 09411507 | 1 | . Nut |
| 10 | PLG2192601 | 1 | . Plate, RH Backup | 27 | SMFS000304 | 32 | . Screw, Machine |
| 11 | PLG2192700 | 1 | . Wiper, LH Plunger | 28 | 231851 | 16 | . Nut, Esna |
| 12 | PLG2192701 | 1 | . Plate, RH Top | 29 | 233569 | 48 | . Lockwasher |
| 13 | PLG2192800 | 1 | . LH Top Wiper Backup | 30 | NCHS000375 | 25 | . Hex Nut |
| 14 | PLG2192801 | 1 | . Plate, RH Backup | 31 | 231853 | 32 | . Washer |
| 15 | ROD0024910 | 1 | . Rod | 32 | 233465 | 32 | . Capscrew |
| 16 | 247008 | 4 | . Jam Nut | 33 | SQSS375200 | 8 | . Set Screw |
| 17 | Y01F-0640 | 2 | . Cotter Pin | | | | |
| 18 | 902209 | 2 | . Pin | | | | |

Rev B

Infeed Chute



| Item | Part No. | Qty | Description | Item | Part No. | Qty | Description |
|------|---------------|-----|--------------------------|------|--|-----|--------------------------|
| | 903362 | | Infeed Chute | | | | |
| 1 | 902139 | 1 | . Chute | 12 | TBE0261300 | 1 | . Tube Assembly |
| 2 | WND0024498 | 1 | . Window | *a | HYD6600404 | 1 | . . 1/4 Female Connector |
| 3 | BKT0026116 | 1 | . Mounting Bracket | *a | F000008221 | 1 | . . 1/4 Male Connector |
| 4 | 09416918 | 18 | . Nut, Serrated | *a | 45990032 | 7" | . . Copper Tube |
| 5 | BKT0023959 | 1 | . Bracket | 13 | VLV0000400 | 1 | . 1/4 Needle Valve |
| 6 | SMS0000173 | 4 | . Screw, Serrated Flange | 14 | 229500 | 1 | . Fitting |
| 7 | 254163 | 1 | . Sensor, Prox | 15 | HYD3152040 | 1 | . Fitting |
| 8 | SMS0000300 | 2 | . Screw, Serrated Flange | 16 | 27663 | 1 | . Connector, Cord |
| 9 | VLV0026113 | 1 | . Capscrew | | | | |
| 10 | 204389 | 1 | . Seal | | | | |
| 11 | BSH0026123 | 1 | . Fitting | | | | |
| | | | | *a | Included in Tube Assembly (TBE0261300) | | |

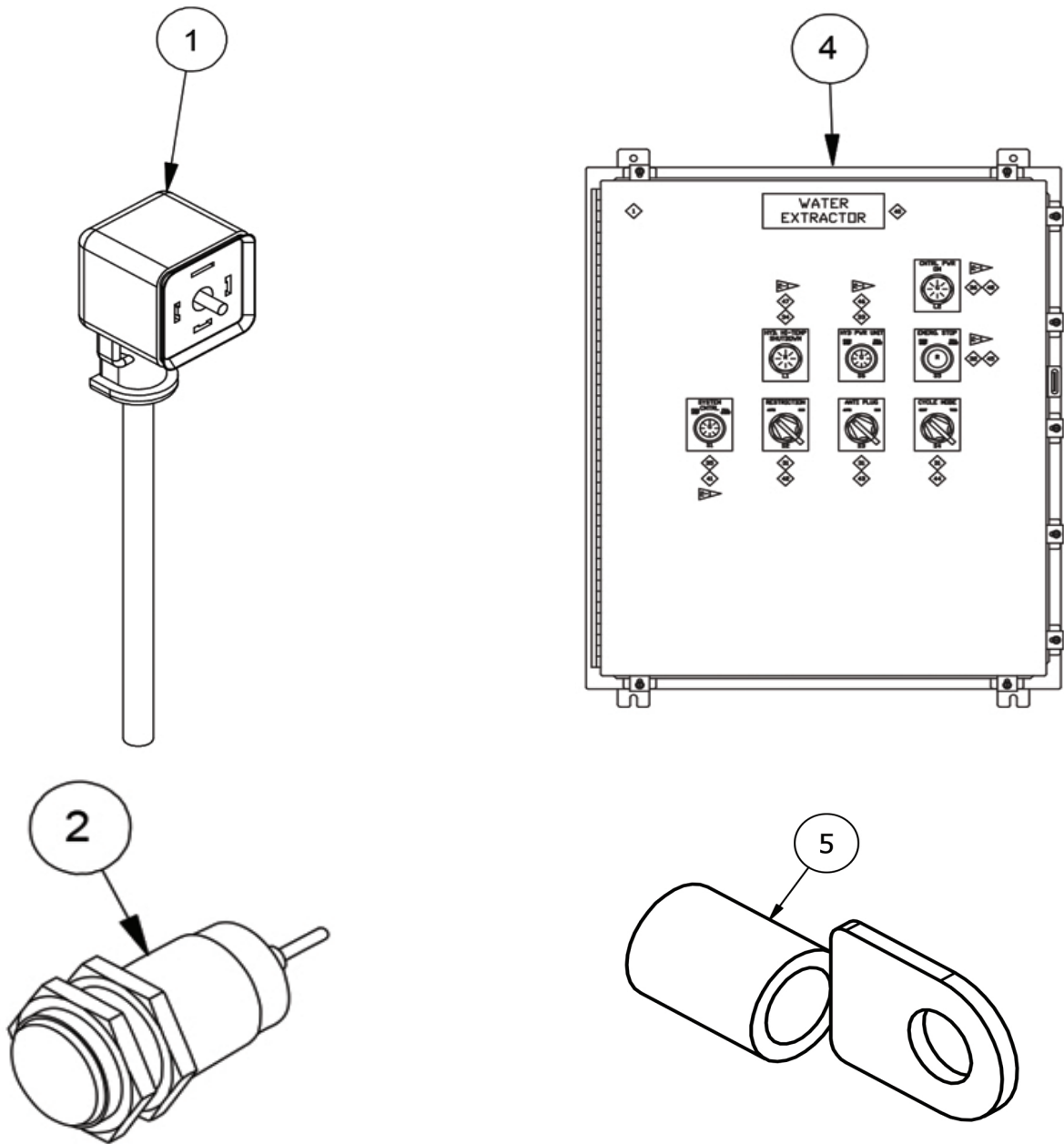
This page is intentionally left blank.

Section 2
Electrical System

Electrical System..... 2-3
 . Control Panel 2-4

This page is intentionally left blank.

Electrical System



| Item | Part No. | Qty | Description | Item | Part No. | Qty | Description |
|------|---------------|-----|--------------------------|------|-----------|-----|------------------|
| | 910471 | | Electrical System | | | | |
| 1 | 255654 | 5 | . Connector | 4 | *a 910475 | 1 | . Panel, Control |
| 2 | 244112 | 3 | . Proximity Switch | 5 | 210210 | 9 | . Terminal, Ring |

*a See Separate Coverage (See Page 2-4)

Rev A

Control Panel

Page 1 of 5

| BOM | | | |
|------|-----|-----------|--|
| ITEM | QTY | ASC PART# | DESCRIPTION |
| 1 | 1 | 256185 | NEMA 4X ENCLOSURE 30X24X8 |
| 2 | 1 | 256186 | BACK PANEL 27X21 |
| 3 | 2 | ----- | 1.5 X 3 x 6FT WIREWAY |
| 4 | 2 | ----- | 1.5 WIREWAY COVER (6FT) |
| 5* | 1 | 910477 | CONTROLLER MODULE PROGRAMMED |
| 6* | 1 | 89004 | CONNECTOR KIT, MC43 C2 |
| 7* | 1 | 89012 | CONNECTOR KIT, MC43 C1 |
| 8* | 1 | 602536 | IQAN ID TAG, MOLEX; 20085140 (1T), R# 597550 |
| 9 | 1 | 260949 | ETHERNET PORT, RJ45 |
| 10 | 1 | 254146 | 100-240VAC TO 24VDC, 5A POWER SUPPLY |
| 11 | 1 | 256209 | GFCI 120VAC/20A |
| 12 | 1 | ----- | DIN RAIL 35/7.5 PERF DIN 2 METER LG |
| 13 | 3 | ----- | 120 V FUSE BLOCK |
| 15 | 2 | 256191 | 24 V FUSE BLOCK |
| 16 | 2 | 256190 | FUSE END PLATE |
| 17 | 19 | 256193 | TERMINAL BLOCK |
| 18 | 4 | 256194 | END PLATE |
| 19 | 14 | 250697 | JUMPER |
| 20 | 37 | 256195 | TERMINAL BLOCK |
| 22 | - | - | - |
| 23 | - | - | - |
| 24 | 7 | 256198 | GROUNDING TBS |
| 25 | 8 | 256199 | END STOP |
| 26 | 5 | 256200 | POTENTIOMETER 5W, 10K |
| 27 | 5 | 256201 | POTENTIOMETER KNOB |
| 28* | 1 | 905487 | MOUNTING BRACKET, POTENTIOMETER |
| 29 | 1 | 256018 | 2PDT 120 VAC RELAY |
| 30 | 1 | 256017 | RELAY BASE |
| 31 | 3 | 256203 | 2 POS SEL SW MAINT |
| 32 | 1 | 256204 | EM STOP PUSH/PULL MAINT |
| 33 | 1 | 256207 | START/STOP MAINT. 120 VAC LIGHT |
| 34 | 1 | 256206 | IND LIGHT RED 120VAC |
| 35 | 1 | 256207 | START/STOP MAINT 24VDC LIGHT |
| 36 | 1 | 256208 | IND LIGHT GREEN 120VDC |
| 37 | 1 | 256210 | 1/2" X 2" - "TB-A" |
| 38 | 1 | 256211 | 1/2" X 2" - "TB-B" |
| 39 | 1 | 256212 | 1/2" X 2" - "GROUND" |
| 40 | 1 | 256213 | 1/2"X 2-"WATER EXTRACTOR" |
| 41 | 1 | 256214 | 3 X 2.5-"SYSTEM CNTRL" |
| 42 | 1 | 256215 | 3 X 2.5 "RESTRICTION" |
| 43 | 1 | 256216 | 3 X 2.5 "ANTI PLUG" |
| 44 | 1 | 256217 | 3 X 2.5-"CYCLE MODE" |
| 45 | 1 | 256218 | 3 X 2.5-"EMERG. STOP" |
| 46 | 1 | LABEL | 3 X 2.5-"HYD PWR UNIT" |
| 47 | 1 | 256220 | 3 X 2.5-"HYD HI-TEMP SHUTDOWN" |
| 48 | 1 | 256221 | 3 X 2.5-"CNTRL PWR ON" |
| 49 | 1 | 256020 | RELAY |
| 50 | 1 | 256019 | RELAY SOCKET |
| 51 | 2 | 246933 | FUSE, 10A |
| 52 | 1 | 243609 | FUSE, 3A |
| 53 | 1 | 243577 | FUSE, 5A |
| 54 | - | - | - |
| 55 | 1 | 256192 | FUSE, 7A |
| 56 | - | - | - |
| 57 | 1 | 906861 | LABEL, POTENTIOMETER |

NOTES:

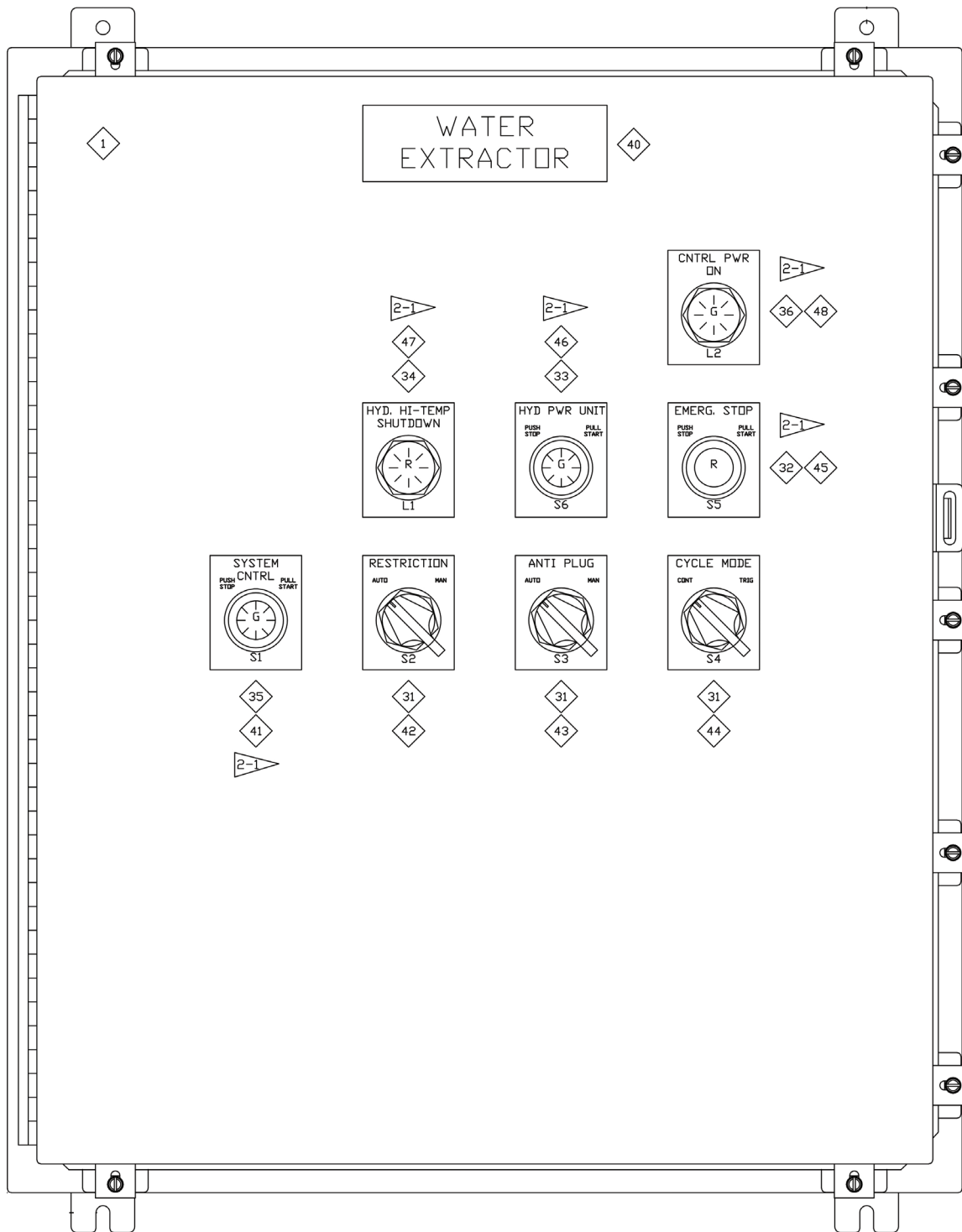
1-1 ITEM NUMBERS WITH AN ASTERISK (*) ARE ASC SUPPLIED. ALL OTHER PARTS ARE REFERENCE AND SOURCED BY THE VENDOR

1-2 PARTS SUPPLIED BY VENDOR CAN BE SUBSTITUTED, BUT MUST BE EQUAL OR BETTER.

1-3 ALL LEGEND PLATES ARE BLACK BACKGROUND WITH WHITE TEXT. REFER TO SEPARATE VIEWS FOR REQUIRED TEXT AND FORMATTING OF LABEL..

Control Panel

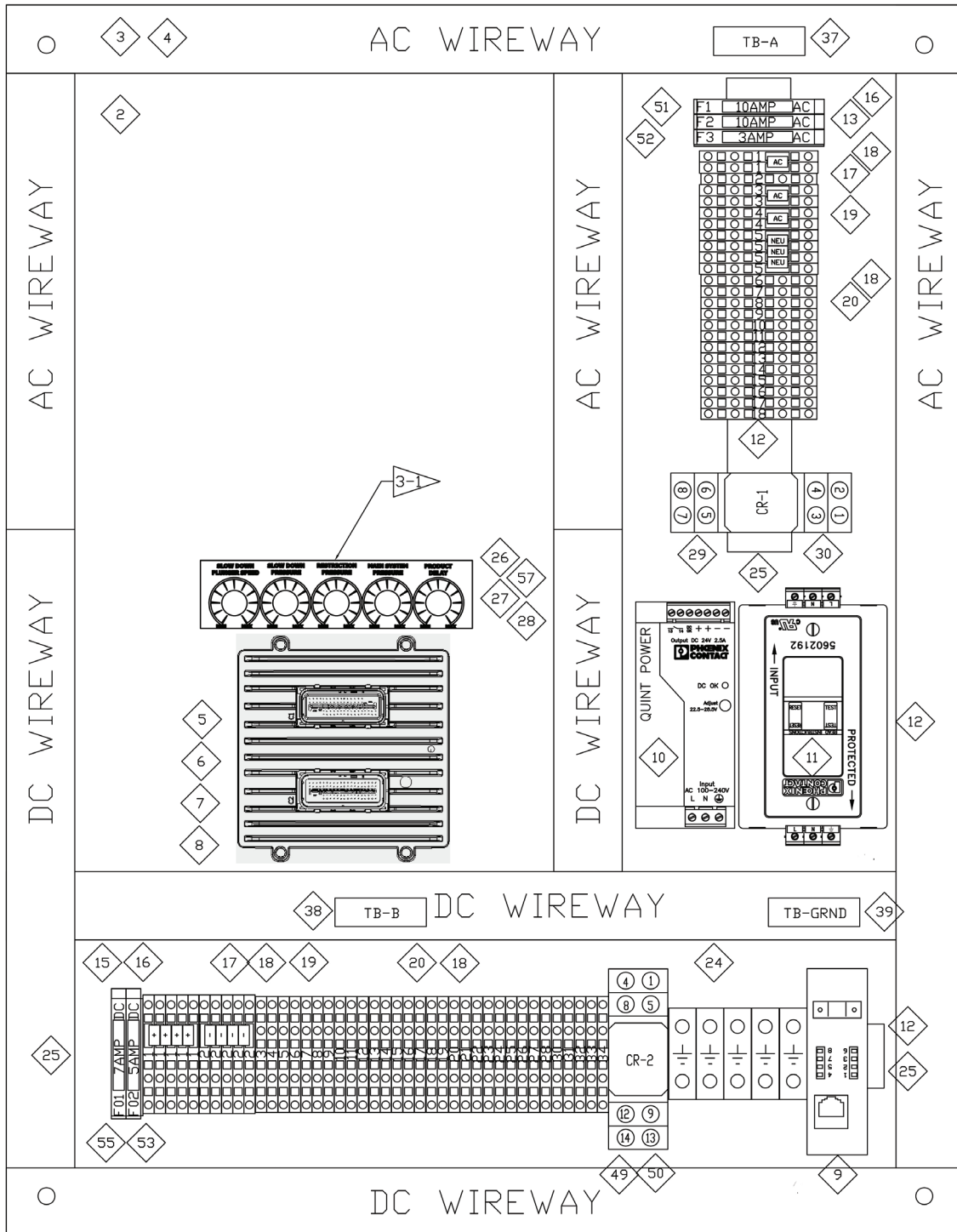
Page 2 of 5



2-1 NOTES:
LETTERS ON OPERATOR
CONTROL INDICATES COLOR
G = GREEN
R = RED

Control Panel

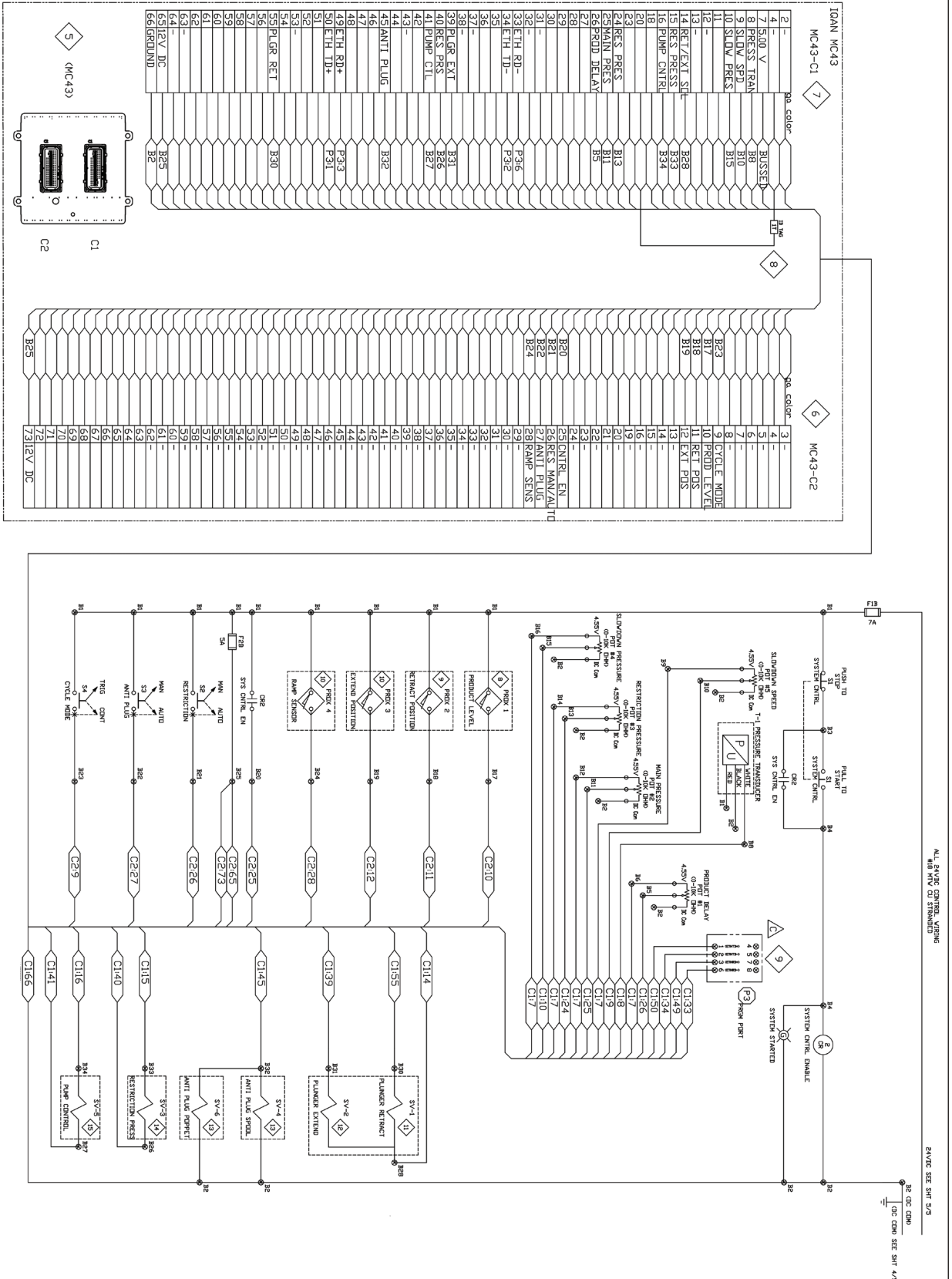
Page 3 of 5



NOTES:
 3-1 REFER TO DRAWING
 906861 FOR LABEL
 DIMENSIONS AND
 FORMATTING

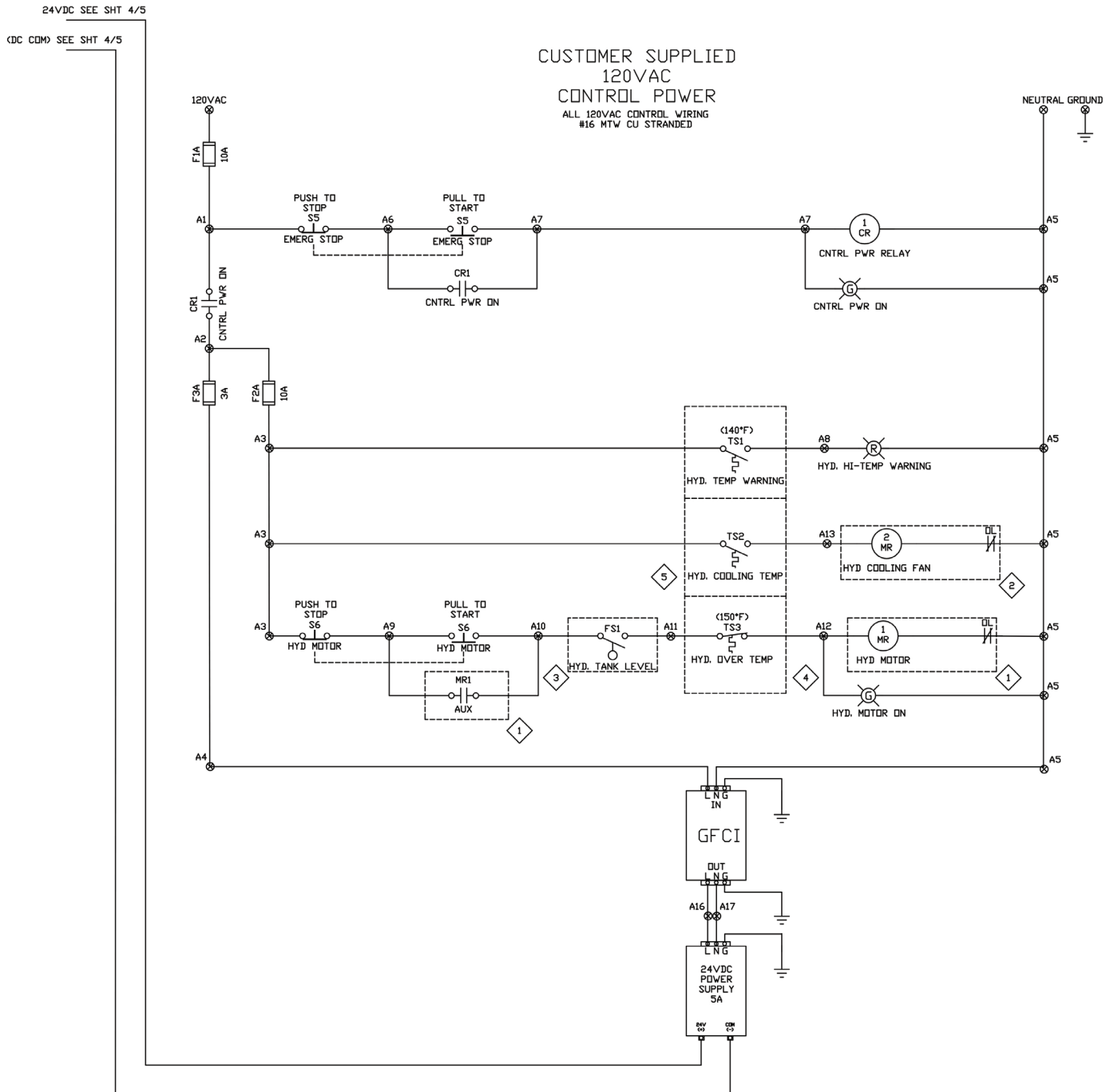
Control Panel

Page 4 of 5



Control Panel

Page 5 of 5



Section 3
Hydraulic/Power System

Hydraulic Power Unit (460 VAC Motor)..... 3-3

 . Hydraulic Tank 3-6

 . Control Manifold 3-7

 . Junction Box 3-8

Hoses and Fittings..... 3-9

This page is intentionally left blank.

Hydraulic Power Unit (460 VAC Motor)

Page 1 of 3

| Item | Part No. | Qty | Description | Item | Part No. | Qty | Description |
|------|---------------|-----|-----------------------------------|------|-----------------|-----|---------------------------|
| | 910474 | | Power Unit (460 VAC Motor) | | | | |
| 1 | 253971 | 1 | . Adapter | 34 | 225103 | 1 | . Fitting |
| 2 | 253972 | 1 | . Coupling | 36 | 209137 | 2 | . Fitting |
| 3 | 253973 | 1 | . Coupling | 37 | 23390 | 1 | . Kit, Split Flange |
| 4 | 255722 | 1 | . Heat Exchanger | | 225329 | 2 | . . Clamp Half |
| 5 | 910620 | 1 | . Valve | | 203523 | 1 | . . O-Ring |
| 6 | 253977 | 1 | . Pump | | 221569W | 4 | . . Capscrew |
| 7 | 253978 | 1 | . Check Valve | | 221771W | 4 | . . Washer |
| 8 | 201440-9 | 1' | . Suction Hose | 38 | 255723 | 1 | . Valve, Water Modulating |
| 9 | 253981 | 1 | . Pump | 39 | 15135W | 10 | . Washer |
| 10 | 903007 | 1 | . Bracket | 40 | 221711W | 10 | . Hex Nut |
| 11 | 253990 | 1 | . 460 VAC Motor | 41 | 221767W | 6 | . Washer |
| 12 | 254155 | 1 | . Fitting | 42 | R13811043 | 2 | . Capscrew |
| 13 | 225369 | 4 | . T-Bolt Clamp | 43 | 162572W | 4 | . Capscrew |
| 14 | 902452 | 1 | . Tray Weldment, HPU | 44 | Y17C-1028 | 4 | . Capscrew |
| 15 | *a 903662 | 1 | . Hydraulic Tank | 45 | YSPS-0003-LCSSM | 4 | . Washer |
| 16 | *c 255121 | 1 | . Manifold, Control | 46 | 237567 | 2 | . Nut, Lock |
| 17 | 211560 | 1 | . Fitting | 47 | F000007550 | 4 | . Grommet |
| 18 | R13801972 | 2 | . Fitting | 48 | *b 910502 | 1 | . Junction Box |
| 19 | 224298 | 1 | . Fitting | 50 | 905545 | 1 | . Valve |
| 20 | 214203 | 1 | . Gauge | 51 | 18473W | 2 | . Capscrew |
| 21 | 225648 | 2 | . Snubber, Gauge | 52 | 221763W | 2 | . Washer |
| 22 | 20856 | 2 | . Fitting | 53 | SMS0000180 | 4 | . Screw, Ser Flg |
| 23 | 223638 | 2 | . Fitting | 54 | 906845 | 2 | . Spacer, Valve |
| 24 | 231135 | 1 | . Gauge | 55 | 09411507 | 2 | . Nut |
| 25 | 529950 | 1 | . Fitting | 56 | 15113W | 4 | . Nut, Lock |
| 26 | 11860 | 2 | . Fitting | 57 | Y01C-0416 | 4 | . Capscrew |
| 27 | 209619 | 1 | . Fitting | 58 | 254535 | 1 | . Transducer |
| 28 | 15325 | 1 | . Fitting | 59 | 209161 | 1 | . Fitting |
| 29 | 209715 | 1 | . Fitting | 60 | 222886 | 1 | . Fitting |
| 30 | 209490 | 2 | . Fitting | 61 | 19990 | 1 | . Fitting |
| 31 | 234591 | 2 | . Fitting | 62 | 28488 | 1 | . Fitting |
| 32 | 229449 | 1 | . Kit, Split Flange | 63 | Y854-100810 | 1 | . Fitting |
| | 225328 | 2 | . . Clamp Half | | | | |
| | 203446 | 1 | . . O-Ring | | | | |
| | R13811077 | 4 | . . Capscrew | | | | |
| | 221771W | 4 | . . Washer | | | | |

*a See Separate Coverage (See Page 3-6)

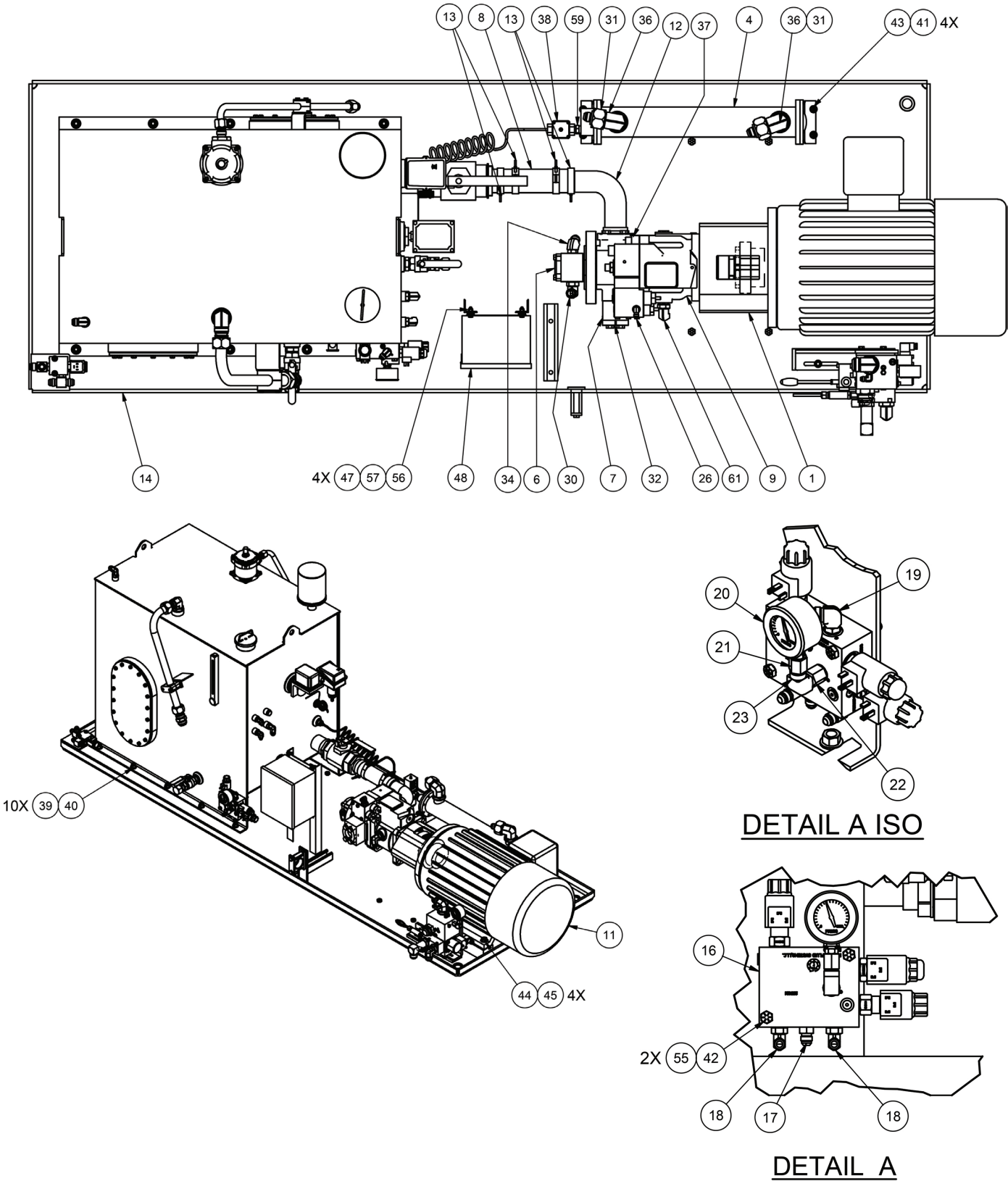
*b See Separate Coverage (See Page 3-8)

*c See Separate Coverage (See Page 3-7)

Rev E

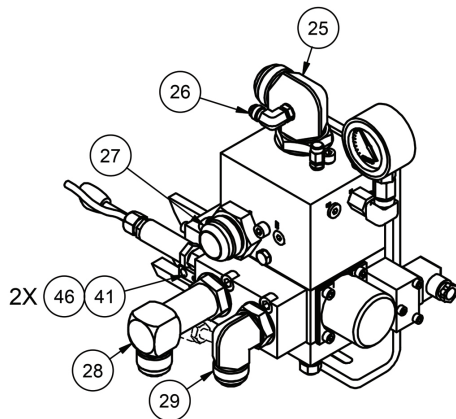
Hydraulic Power Unit (460 VAC Motor)

Page 2 of 3

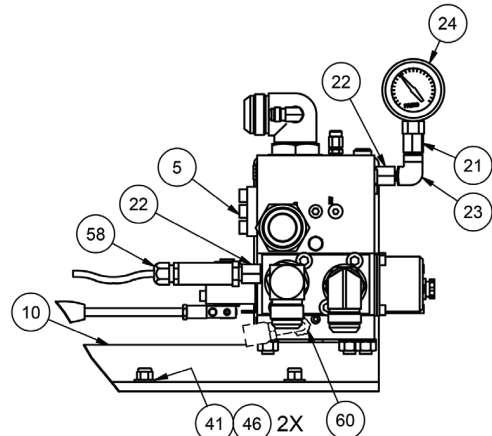


Hydraulic Power Unit (460 VAC Motor)

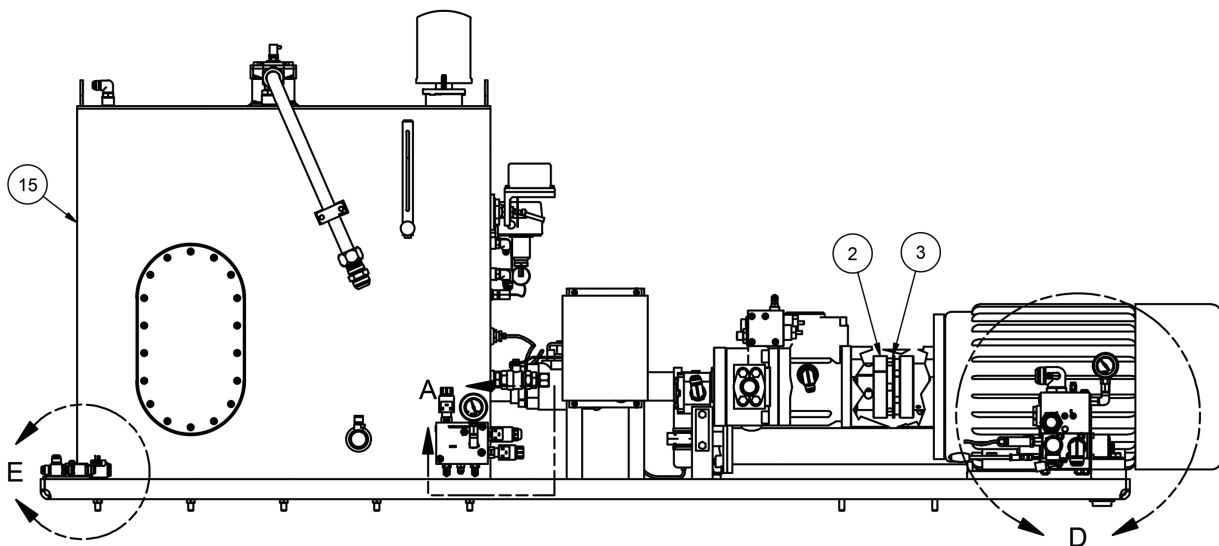
Page 3 of 3



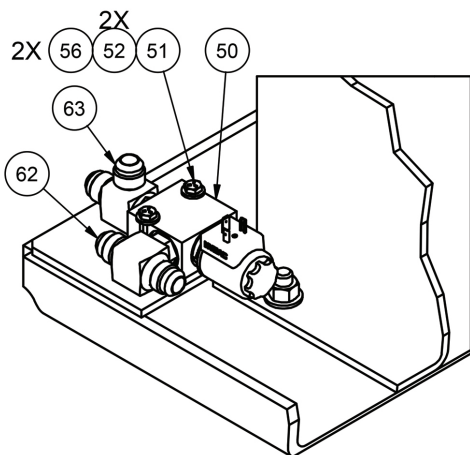
DETAIL D ISO



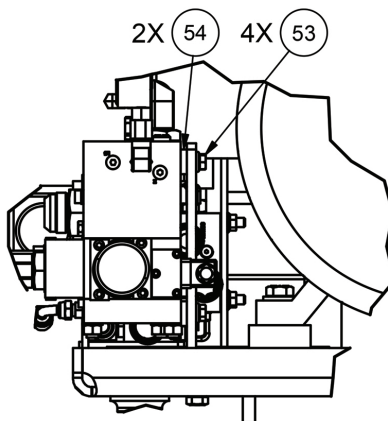
DETAIL D



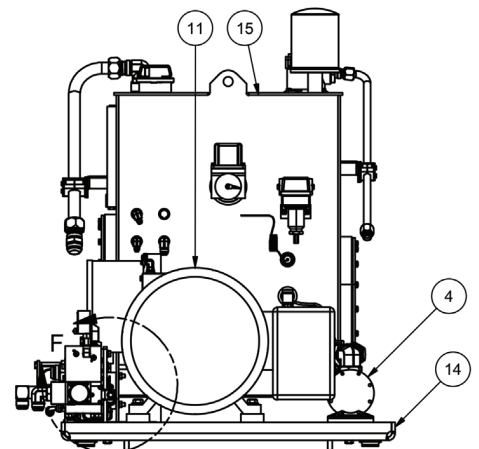
C
C
D
D
E
E



DETAIL E ISO

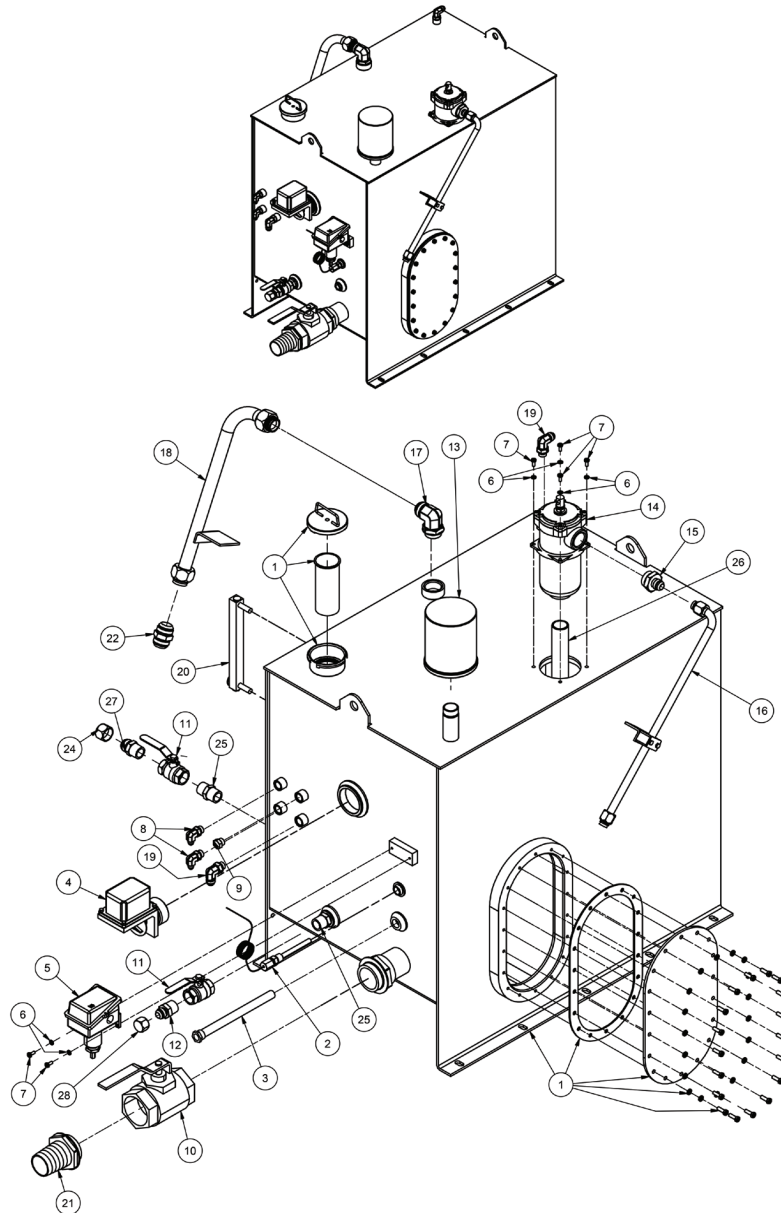


DETAIL F



VIEW C-C

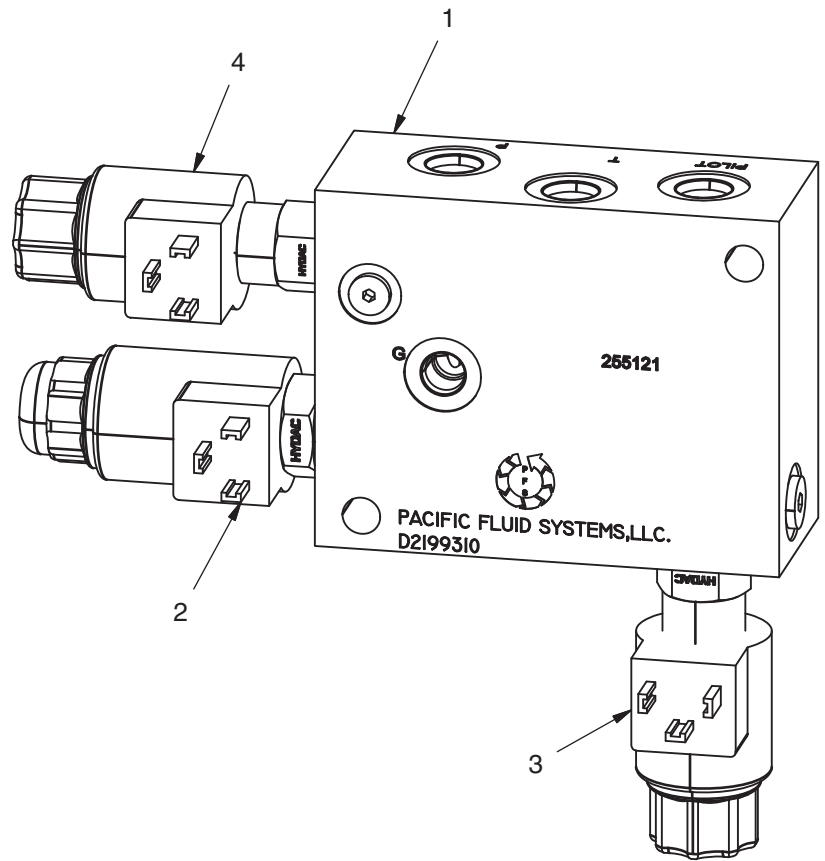
Hydraulic Tank



| Item | Part No. | Qty | Description | Item | Part No. | Qty | Description |
|------|---------------|-----|----------------------------|------|----------|-----|----------------------|
| | 903662 | | Tank,Hydraulic | | | | |
| 1 | 902516 | 1 | . Tank, Hydraulic | 15 | 23408 | 1 | . Fitting |
| 2 | 254006 | 1 | . Thermowell | 16 | 902279 | 1 | . Tube Assembly |
| 3 | 255724 | 1 | . Thermowell | 17 | 209714 | 1 | . Fitting |
| 4 | SWI0059037 | 1 | . Switch, Float | 18 | 902993 | 1 | . Tube Assembly |
| 5 | 253673 | 1 | . Switch, Temp | 19 | 229384 | 2 | . Fitting |
| 6 | R13812512 | 6 | . Lockwasher | 20 | 253675 | 1 | . Gauge, Sight Level |
| 7 | R13810990 | 6 | . Capscrew | 21 | 253420 | 1 | . Fitting |
| 8 | 23945 | 2 | . Fitting | 22 | 209443 | 1 | . Fitting |
| 9 | 210709 | 1 | . Fitting | 24 | 209091 | 1 | . Fitting |
| 10 | 254007 | 1 | . Ball Valve | 25 | 209997 | 2 | . Fitting |
| 11 | 253678 | 2 | . Ball Valve | 26 | 902960 | 1 | . Pipe |
| 12 | 209533 | 1 | . Fitting | 27 | 209761 | 1 | . Fitting |
| 13 | 256179 | 1 | . Breather | 28 | 209090 | 1 | . Fitting |
| 14 | 906653 | 1 | . Filter Assembly, In-Line | | | | |
| | 255996 | | . . Replacement Element | | | | |

Rev C

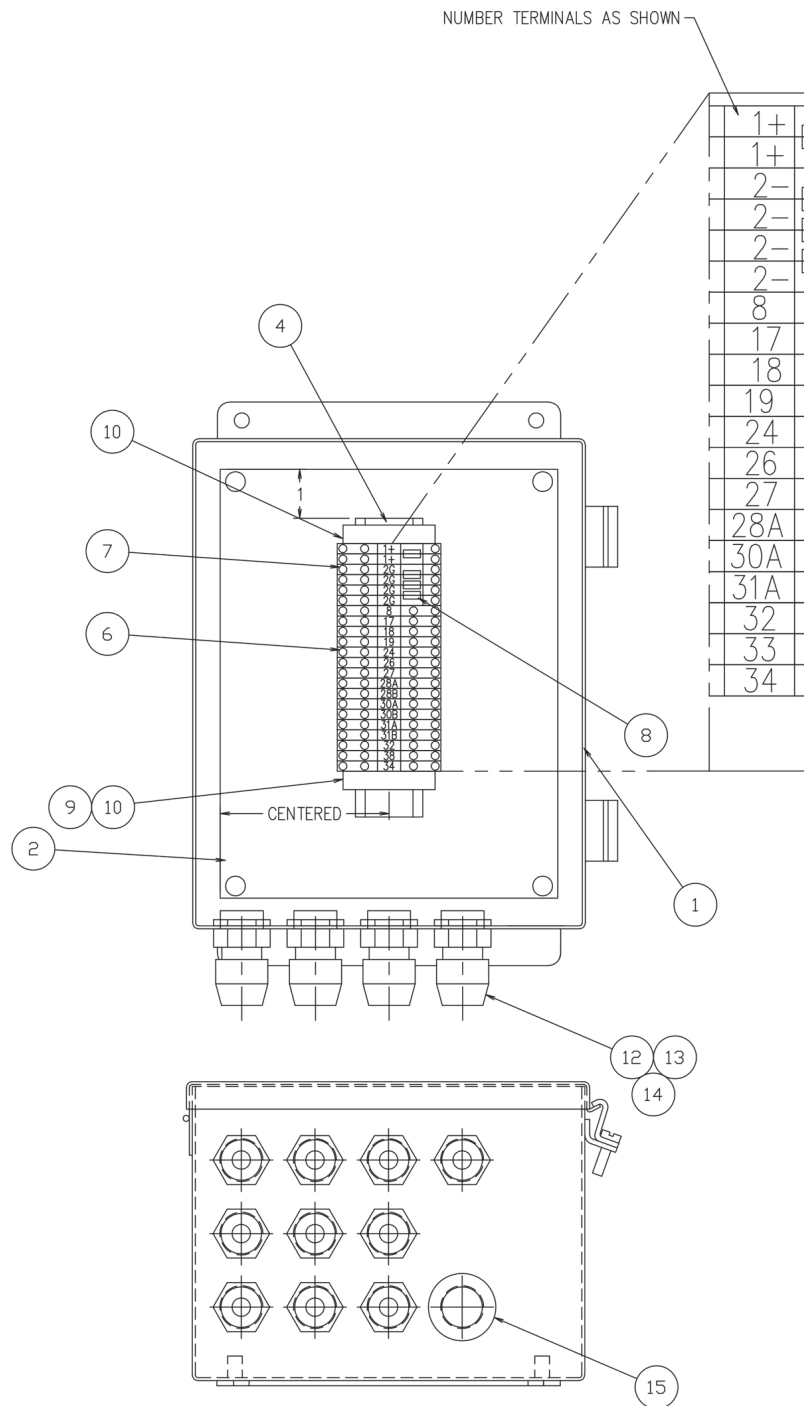
Control Manifold



| Item | Part No. | Qty | Description | Item | Part No. | Qty | Description |
|------|---------------|-----|--------------------------|------|----------|-----|--------------------|
| | 255121 | | Manifold, Control | | | | |
| 1 | 255167 | 1 | . Valve Body | 4 *a | 253979 | 1 | . Cartridge, Valve |
| 2 | 256264 | 1 | . Valve, Cartridge | 4 *b | 255169 | 1 | . Cartridge, Valve |
| 3 | 256021 | 1 | . Relief Valve | | | | |
| 3.1 | 906737 | 1 | . . Kit, Seal | | | | |
| 3.2 | 908683 | 1 | . . Relief Valve | | | | |
| 3.3 | 908684 | 1 | . . Coil, Solenoid | | | | |

*a Used on machines ASC-0WE4-463, ASC-0WE5-502 and earlier
*b Used on machines ASC-0WE4-464, ASC-0WE5-503 and later

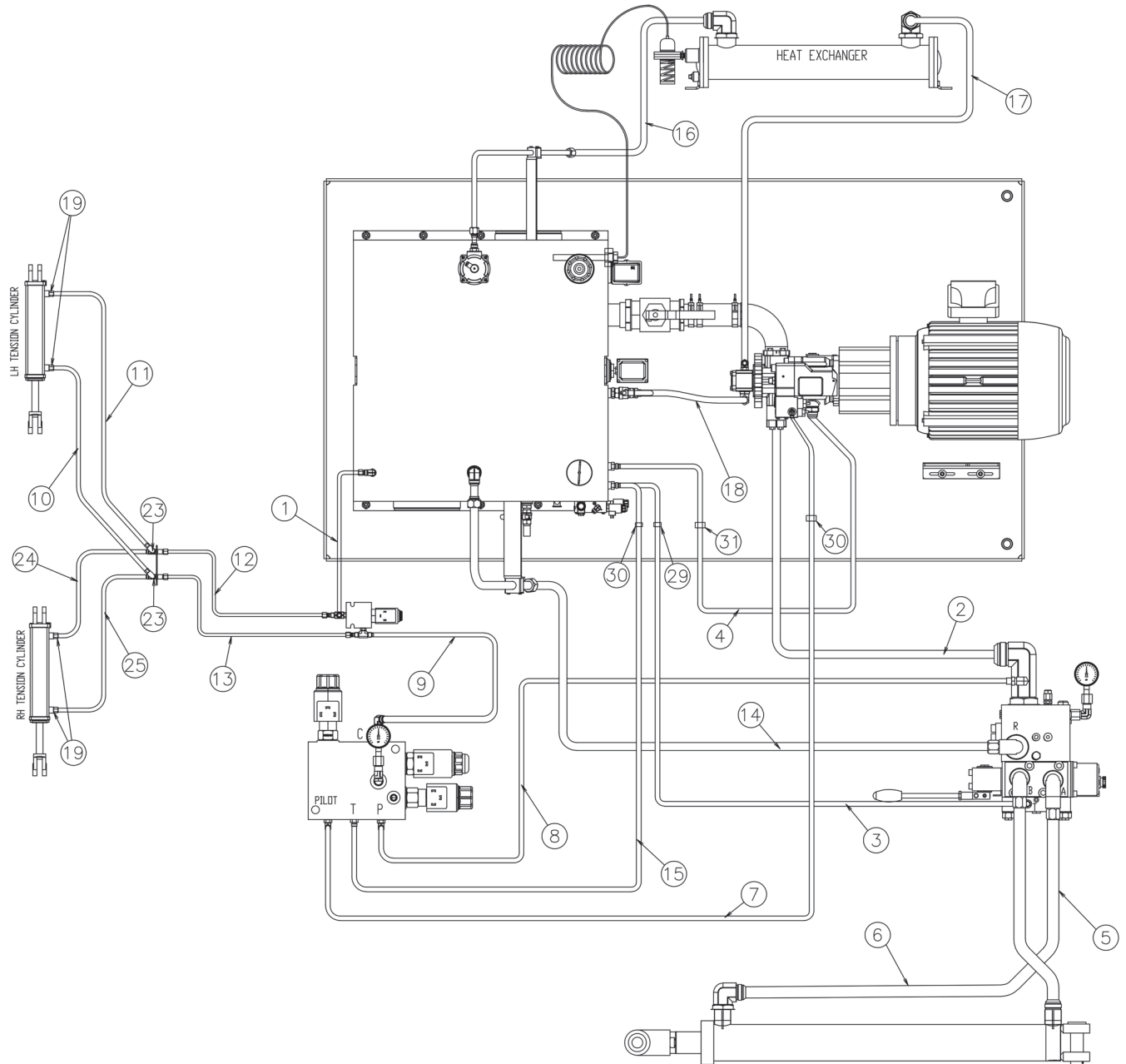
Junction Box, WE4/WE5



| Item | Part No. | Qty | Description | Item | Part No. | Qty | Description |
|------|---------------|-----|------------------------------|------|------------|-----|-------------------|
| | 910502 | | Junction Box Assembly | | | | |
| 1 | 903001 | 1 | . Box | 10 | 241761 | 2 | . End Stop |
| 2 | 22623 | 1 | . Panel, Back | 12 | 27663 | 10 | . Connector, Cord |
| 4 | 22628 | 6IN | . Rail | 13 | RNG0005262 | 10 | . Ring, Seal |
| 6 | 239317 | 13 | . Terminal Block | 14 | 220582 | 10 | . Ring Nut |
| 7 | 232237 | 6 | . Terminal Block | 15 | 227023 | 1 | . Plug, Knockout |
| 8 | 232239 | 4 | . Jumper | | | | |
| 9 | 232238 | 1 | . Seperator, Terminal Block | | | | |

Rev A

Hoses and Fittings



| Item | Part No. | Qty | Description | Item | Part No. | Qty | Description |
|------|---------------|-----|---------------------------|------|------------|-----|-----------------|
| | 902996 | | Hoses and Fittings | | | | |
| 1 | 255381 | 1 | . Hose Assembly | 14 | 256843 | 1 | . Hose Assembly |
| 2 | 255382 | 1 | . Hose Assembly | 15 | HOS036662A | 1 | . Hose Assembly |
| 3 | 255383 | 1 | . Hose Assembly | 16 | 209172 | 1 | . Hose Assembly |
| 4 | 255384 | 1 | . Hose Assembly | 17 | 21570 | 1 | . Hose Assembly |
| 5 | 255385 | 1 | . Hose Assembly | 18 | 225141 | 1 | . Hose Assembly |
| 6 | 255386 | 1 | . Hose Assembly | 19 | 229384 | 4 | . Fitting |
| 7 | 255387 | 1 | . Hose Assembly | 23 | R12579595 | 2 | . Fitting |
| 8 | 255388 | 1 | . Hose Assembly | 24 | 256844 | 1 | . Hose Assembly |
| 9 | 255389 | 1 | . Hose Assembly | 25 | 256845 | 1 | . Hose Assembly |
| 10 | 255463 | 1 | . Hose Assembly | 29 | 258027 | 1 | . Clamp |
| 11 | 255464 | 1 | . Hose Assembly | 30 | 258028 | 2 | . Clamp |
| 12 | 902237 | 1 | . Tube Assembly | 31 | 258029 | 1 | . Clamp |
| 13 | 902238 | 1 | . Tube Assembly | | | | |

Rev E

This page is intentionally left blank.

This page is intentionally left blank.



To find a dealer in your area,
Call: 503-625-2560,
Fax: 503-625-7269, or
Visit our website: <http://www.alliedsystems.com>

Allied Systems
COMPANY

PB000WE424 12/2024

Printed in USA