

Parts Manual

Model WE4 Water Extractor

Starting in 2020, with
Serial Number: ASC-0WE4-466

A Product of
Allied Systems
COMPANY
Sherwood, Oregon USA
PB000WE420



Important: Be certain to specify the
serial number of your Water Extractor
when ordering parts.



WARNING

California Proposition 65 Warning

Diesel engine exhaust and some of its constituents are known to the State of California to cause cancer, birth defects, and other reproductive harm.

Battery posts, terminals and related accessories contain lead and lead compounds, chemicals known to the State of California to cause cancer, birth defects, and other reproductive harm. Wash hands after handling.

Other chemicals in this vehicle are also known to the State of California to cause cancer, birth defects, and other reproductive harm.

Section 0

General Information

Section.....	Page Number
Introduction	0-2
Safety	0-3
Serial Number Location.....	0-8
Table of Contents	0-9

Introduction

This manual contains all components of the water extractor that can be separately identified as well as parts necessary for equipment support. You can find the parts page relevant to your project in either the Table of Contents (page i) or in the Parts Index (page i).

Illustrations

Illustrations are provided whenever possible to represent component parts and the mounting location of those parts. The numbered labels correspond to the item numbers in the parts list.

Parts Lists

Component parts lists are presented in a 5-column format:

Item: Index numbers found in this column correspond to the numbers found on the respective parts location illustration. Some items are shown for reference purposes only to illustrate their relationship to other systems.

Notes: This column identifies footnotes applicable to specified items.

Part Number: This column lists the Allied Systems Company Part Number.

Quantity: This column lists the total number of a specific item required per assembly or subassembly. This number may not necessarily be the number of items used in the end item or system. Only one set of components is listed whenever the components of two assemblies are the same.

"A/R" (as required) identifies bulk items whose length or other dimension must be specified when requisitioning.

"Ref" identifies items shown for reference purposes only to illustrate their relationship to other systems.

"NSS" (not sold separately) identifies items such as valve housings and spools, ring gears and pinions, etc., which must be ordered as a set because they are closely mated at manufacture.

Description: This column lists the item nomenclature along with those modifiers necessary to identify the item. Additionally, cross references for repairable subassemblies are listed in this column. One dot preceding the description indicates that the item is a component part of the previously listed item or assembly with no dot. Two dots indicate that the item is part of the previously listed item with one dot.

Example:

Engine Installation
. Engine Assembly
. . Manifold Assembly
. . Control Box Assembly
. . . Module Assembly

The Engine Assembly is a first level subassembly of the Engine Installation as indicated with one dot. The Manifold Assembly and the Control Box Assembly are second level components of the Engine Assembly as indicated by the two dots. The Module Assembly is a third level component of the Control Box Assembly which is indicated with three dots.

Safety

Do not clean, lubricate, or make any adjustments on the equipment while it is in operation.

Do not start the equipment until you are certain everyone is clear of the machine and have ensured there are no tools on the unit.

Do not work around equipment in loose clothing.

Do not attempt to service any equipment while the motor is running.

Inspection Covers and Safety Shields should only be removed by authorized service persons.

After servicing **do not** place the equipment back into operation until all Safety Shields and Devices have been replaced. Operation without Safety Shields and Devices can place the operator into a hazardous situation.

Do not open or work on the In-Feed System until the flow of material has been stopped and the Water Extractor Motor has been turned off.

Do not make any adjustments or reach under any load bearing surfaces while they are loaded.

INSTRUCT ALL OPERATORS ON SAFETY PRECAUTIONS.



WARNING:

Some illustrations in this parts list show the water extractor without shields to allow for a better view of the area being addressed. The water extractor should never be operated with any of the safety shields removed.

Safety

General

The following pages contain general safety warnings which supplement specific warnings and cautions that can be found in the operators manual (PB0WE4AOPS) that is included with this unit. All Freeman manuals can also be found online at www.alliedsystems.com. All electrical and hydraulic equipment is potentially hazardous. You must thoroughly review and understand this Safety Section before attempting to operate, troubleshoot, maintain or service this water extractor.

Time, money and effort have been invested in making your Water extractor a safe product. The dividend from this investment is YOUR PERSONAL SAFETY.

However, it must be realized that no power-driven equipment can be any safer than the person behind the controls. If you don't operate and maintain your Freeman water extractor safely, our efforts will have been in vain.

The safety instructions and warnings, as documented in this manual and operators manual shipped with the machine, provide the most reliable procedures for the safe operation and maintenance of your water extractor. It's your responsibility to see that they are carried out.

Allied Systems Company cannot anticipate all worksite conditions, local regulations, etc. It is the responsibility of the end user to be aware of and obey any specific worksite, local, state, or national regulations or procedures that are applicable to operating this water extractor.

NOTE: All possible safety hazards cannot be anticipated so as to be included in this manual. Therefore, you must always be alert to potential hazards that could endanger personnel and/or damage the equipment.

Safety Symbols

The following symbols/terms are used to emphasize safety precautions and notices:



DANGER

The “DANGER” symbol indicates a hazardous situation which, if not avoided, will result in death or serious injury. Carefully read the message that follows to prevent serious injury or death.



WARNING

The “WARNING” symbol indicates a hazardous situation which, if not avoided, could result in death or serious injury. Carefully read the message that follows to prevent serious injury or death.



CAUTION

The “CAUTION” symbol indicates a hazardous situation which, if not avoided, could result in minor or moderate injury, or equipment damage. Carefully read the message that follows to prevent minor or moderate injury.

NOTICE

The “NOTICE” symbol alerts to a situation that is not related to personal injury but may cause equipment damage.

NOTE: ...

The term “NOTE” highlights operating procedures or practices that may improve equipment reliability and/or personnel performance, or to emphasize a concept.

Safety

Operation Warnings



WARNING

Warning: Failure to observe the following safety rules may result in extreme personal injury, dismemberment or death. It is the operator's responsibility to understand the proper and safe use of this water extractor.

Make sure that you read, understand, and obey all of the safety precautions and operating instructions in the operator's manual.

- Keep this Operator's Manual and the Safety Card (Allied form #89-120) with the water extractor at all times.
- Do not operate the water extractor unless you are authorized and trained to do so. If it has been some time since you last operated the water extractor, re-familiarize yourself with the water extractor before starting, then proceed slowly.
- Do not operate the water extractor if you are aware of any malfunctions, needed maintenance or repairs.
- Stop the water extractor immediately if any problems arise.
- Never operate the water extractor without all safety shielding in place.
- Keep hands, feet, hair, jewelry and clothing away from moving parts.
- Avoid wearing loose clothing which can easily be caught in moving parts.
- Always use lights when working at night or in low light conditions.
- Know your job-site rules. Some have site-specific directions and procedures. The methods outlined in the operators manual provide a basis for safe operation of the water extractor. Because of special conditions, your company's procedures may be somewhat different from those shown in the operators manual.
- Do not start the water extractor if the key has been marked with a "DO NOT START" or "RED" tag.
- Alert personnel in the area before starting the water extractor, and make sure everyone is clear.
- Each country has its own safety legislation. It is in the operator's own interest to be conversant with these regulations and to comply with them in full. This also applies to local bylaws and regulations in force on a particular worksite.
- Should the recommendations in this manual deviate from those in the user's country, the national regulations should be followed.
- Never attempt to disconnect any of the safety devices built into the water extractor.

Safety

Hydraulic Hazards

Be aware of the hazards of pressurized hydraulics:



- Wear personal protective equipment, such as gloves and safety glasses, whenever servicing or checking a hydraulic system.
- Assume that all hydraulic hoses and components are pressurized. Relieve all hydraulic pressure before disconnecting any hydraulic line.
- Never try to stop or check for a hydraulic leak with any part of your body; use a piece of cardboard to check for hydraulic leaks.
- Small hydraulic hose leaks are extremely dangerous, and can inject hydraulic oil under the skin, even through gloves.
- Infection and gangrene are possible when hydraulic oil penetrates the skin. See a doctor immediately to prevent loss of limb or death.

Maintenance Safety

- Perform all routine maintenance outlined in this Operator's Manual in the time intervals indicated.
- Maintenance, lubrication and repair of this machine can be dangerous unless performed properly. In order to ensure safety, each person working on this water extractor must have the necessary skills, information, tools and equipment, and satisfy himself that his work method is safe, correct, and meets his own company's requirements.
- Do not attempt to make adjustments, or perform repairs unless you are authorized and qualified to do so.

- Never attempt to service energized equipment.
- Always shut off and secure power when servicing the water extractor.
- Disengage the water extractor and shut off power, and wait for all movement to stop before adjusting, lubricating, cleaning, or servicing the water extractor.
- Tag the key switch with a "DO NOT START" sign and/or remove the key.
- Always perform all maintenance and lubrication procedures with the water extractor on level ground.
- Any unauthorized modifications made to the water extractor by the customer or parties other than Allied Systems will relieve Allied Systems Company and your Freeman dealer of any liability for damage or injury.
- Replace any worn parts only with genuine Freeman parts. Call your dealer for assistance.
- Unless specified in service procedures, never attempt maintenance or lubrication procedures while the water extractor is turned on.
- Before making adjustments to the electrical system, disconnect the battery. An electrical spark could cause a fire, explosion or severe burns.



Safety

Safety Equipment

- Ensure test equipment is in good condition.
- If an instrument must be held while taking measurements, ground the case of the instrument before energizing equipment.
- Do not touch live equipment or personnel working on live equipment while holding a multimeter. Some types of measuring devices should not be grounded—do not hold such devices while taking measurements.
- Prevent personal injury or equipment damage by using a lifting device with a lifting capacity greater than twice the weight of any equipment to be lifted.
- Always use personal protective equipment (PPE) appropriate to the situation. This may include the use of hearing protection, eye protection, a respirator, a hard hat, leather gloves, steel toed boots, etc.



Electrical Hazards

- An electric shock could be fatal. Ensure power to the water extractor is “OFF” before opening electrical panels.
- All electrical cables and connectors must be in good condition (free of corrosion, damage, etc). Use caution in wet weather to avoid danger from electrical shock. Never attempt electrical testing or repair while standing in water.
- Do not wear electrically conductive jewelry, clothing, or other items while working on the electrical system.



Compressed Air Hazards

- When using compressed air to dry parts, pressure should not exceed 30 psi (200 kPa).
- Air pressure penetrating your skin can be fatal. Never direct compressed air at anyone.

Serial Number Location and Identification

Each Freeman Water Extractor is identified by means of a water extractor model number and serial number. As a further identification, all power units are provided with a serial number.

To ensure prompt, efficient service when ordering parts or requesting repairs from your authorized Freeman dealer, record the serial numbers in the spaces provided.

WATER EXTRACTOR SERIAL NUMBER _____

Front of water extractor frame under electric motor.

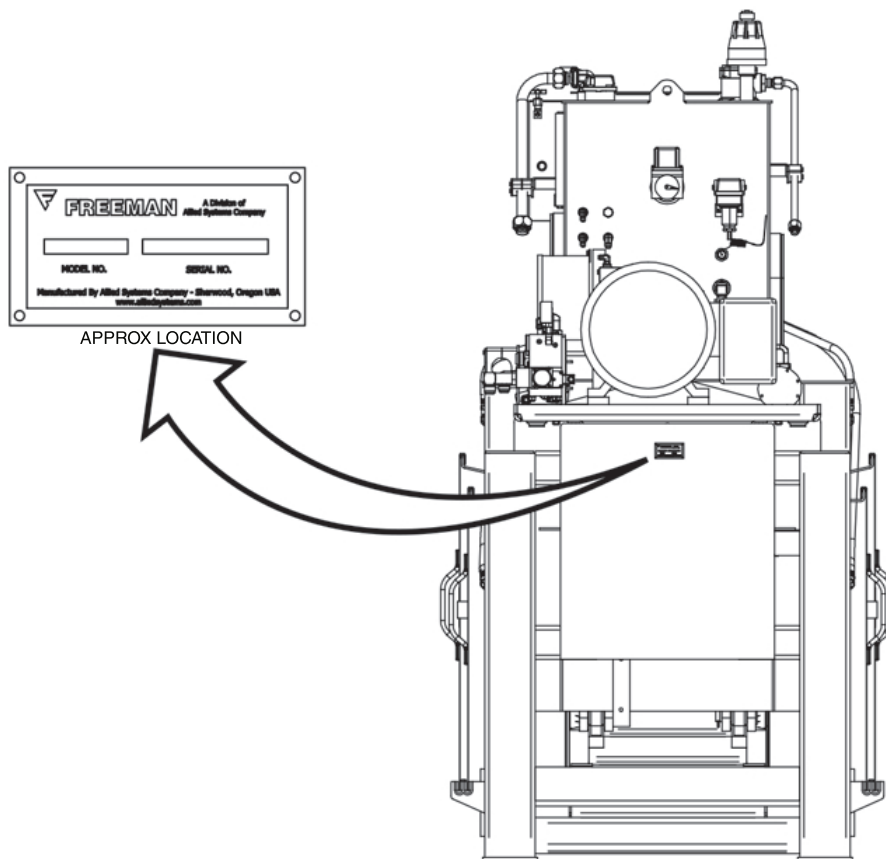
POWER UNIT SERIAL NUMBER

Electric Motor- _____

Left side, near connection box.

NOTE:

The motor and pump end is considered the front of the water extractor. The sides are described as left-hand side and right-hand side as viewed from behind while facing the discharge end of the water extractor.



Starting with ASC-0WE4-466

Table of Contents

Section 1	Main Assembly
Water Extractor Assembly (WE4)	1-3
. Plunger & Main Cylinder	1-6
. Infeed Chute	1-7
 Section 2	 Electrical System
Electrical System.....	2-3
. Control Panel	2-4
 Section 3	 Hydraulic/Power System
Power Unit (460 Vac Motor).....	3-3
. Hydraulic Tank.....	3-6
. Control Manifold	3-7
. Junction Box	3-8
Hoses and Fittings.....	3-9

This page is intentionally left blank.

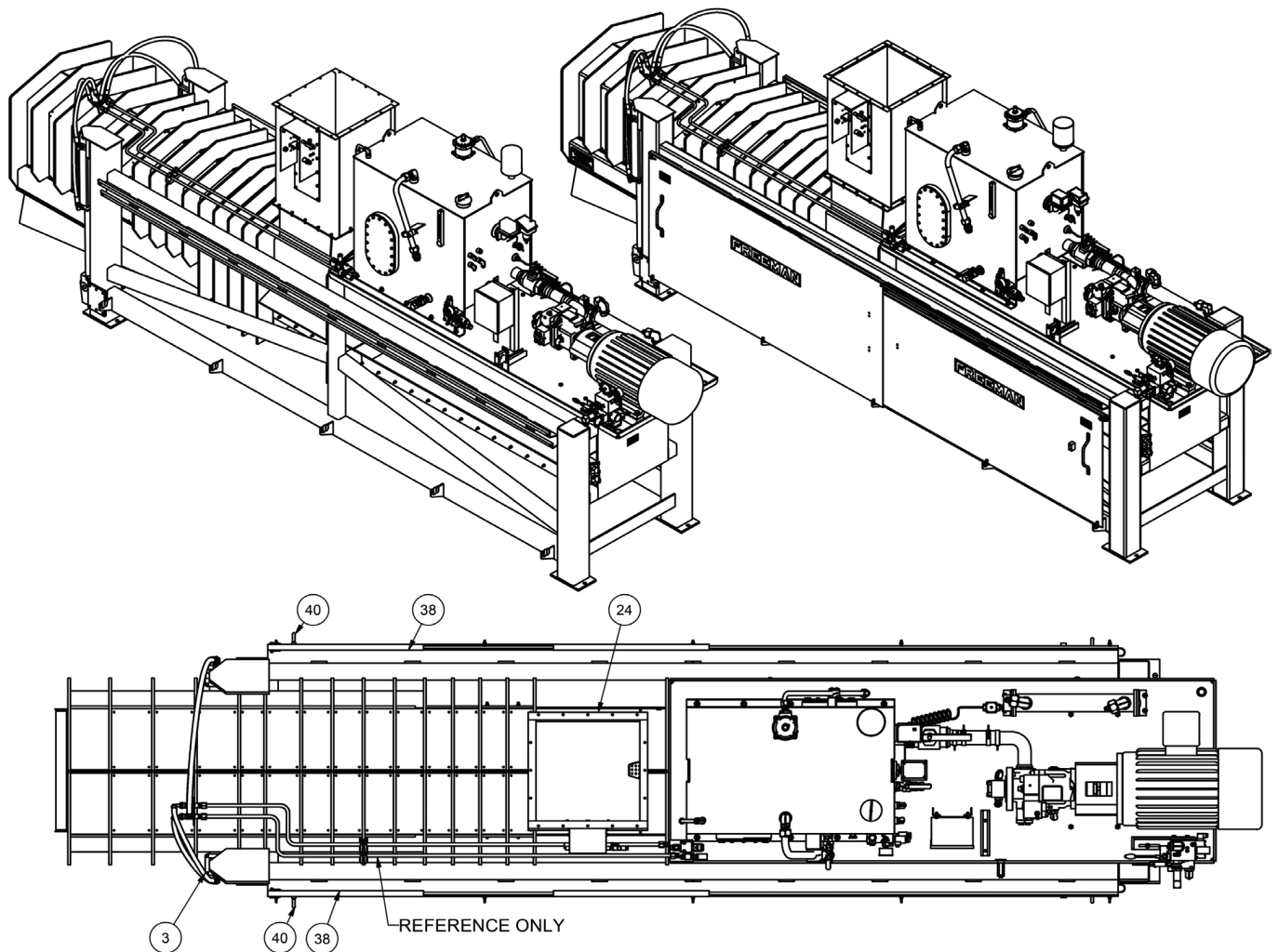
Section 1
Main Assembly

Water Extractor Assembly (WE4) 1-3
 . Plunger & Main Cylinder 1-6
 . Infeed Chute 1-7

This page is intentionally left blank.

Water Extractor Assembly (WE4)

Page 1 of 3



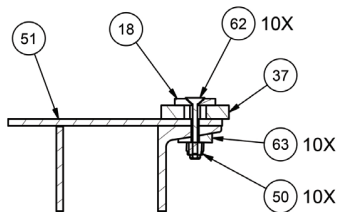
Item	Part No.	Qty	Description	Item	Part No.	Qty	Description
	902451		Water Extractor Assembly				
1	902468	1	. Main Frame	51	902172	1	. Rail, Restrictor
2	*a 903361	1	. Plunder & Main Cylinder	52	225871	4.17'	. Trim, Edge
3	910586	2	. Cylinder Hydraulic	54	PIN0375125	4	. Pin, Snapper
18	RAL0021933	2	. Plate	55	237671	16	. Capscrew
19	RAL0021935	2	. Plate, Backup	56	Y01C-0508	4	. Capscrew
20	PLG0021918	2	. Rail	57	234129	22	. Capscrew
24	*b 903362	1	. Infeed Chute Assembly	58	233866	4	. Capscrew
27	903491	3	. Plate, Mounting	59	Y09G-0628	4	. Capscrew
29	903488	2	. Pivot Pin	60	233860	2	. Capscrew
31	910537	1	. Freeman Decal	61	SMFS000204	76	. Screw, Machine
33	PLG0021919	2	. Rail	62	SMFS000308	20	. Screw, Machine
36	RAL0021934	2	. Rail, Restrictor	63	WASS000143	20	. Washer
37	RAL0021932	2	. Rail, Restrictor	64	233882	12	. Washer
38	902502	2	. Plate, Outer	66	221771W	14	. Washer
39	902501	2	. Plate, Inner	67	228413	16	. Hex Nut
40	HAN0000817	4	. Handle	68	228461	98	. Nut
41	901651	2	. Block, Stop	69	223587	14	. Locknut
42	902467	1	. Plate, RH	70	243588	8	. Rivet, Pop
43	902466	1	. Plate, LH	71	94692	1	. Clamp
44	254617	655"	. Rail Guide				
47	903487	2	. Lock Collar				
48	231853	8	. Washer				
50	231851	26	. Nut, Esna				
				*a	See Separate Coverage		(See Page 1-6)
				*b	See Separate Coverage		(See Page 1-7)

Rev H

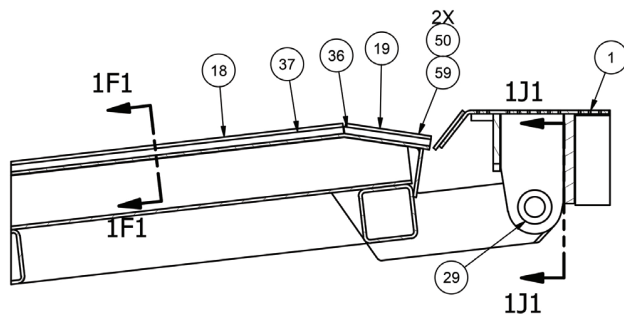
Page 2 of 3

Water Extractor Assembly (WE4)

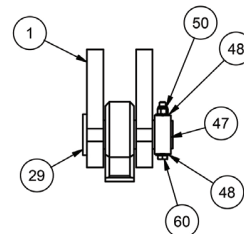
Page 3 of 3



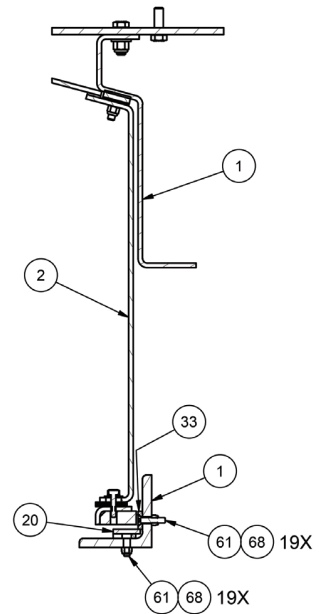
SECTION 1F1-1F1



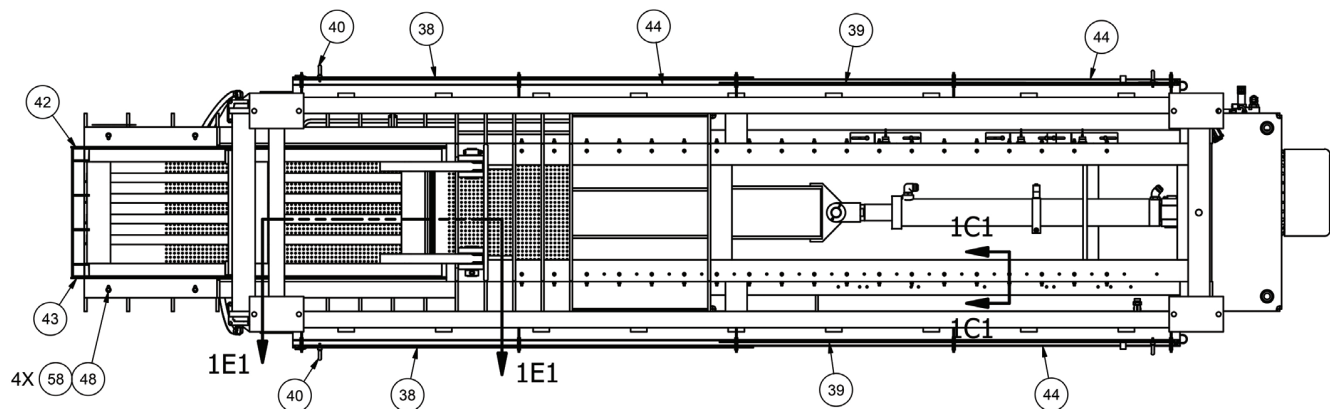
SECTION 1E1-1E1
EA SIDE



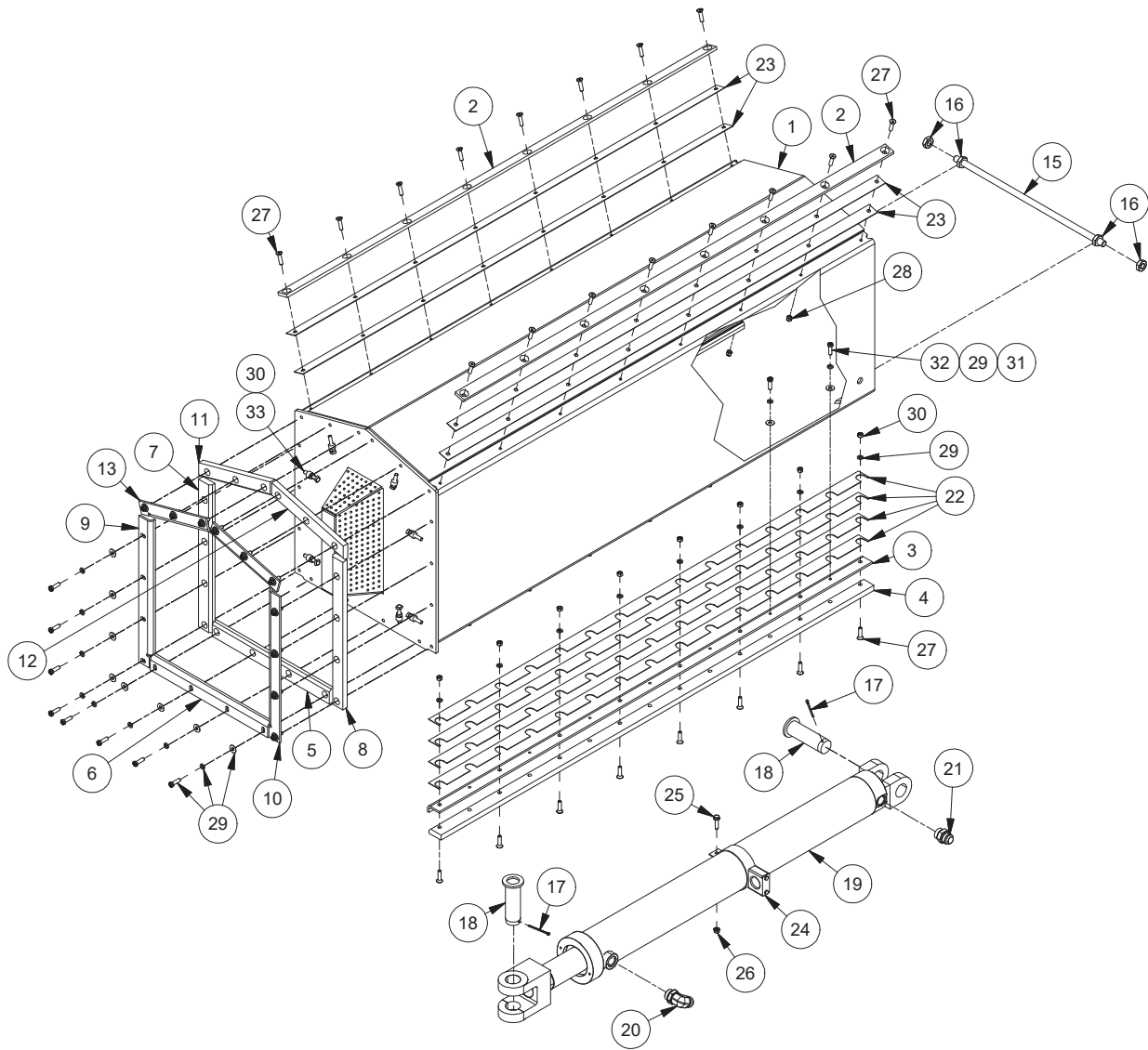
SECTION 1J1-1J1



SECTION 1C1-1C1



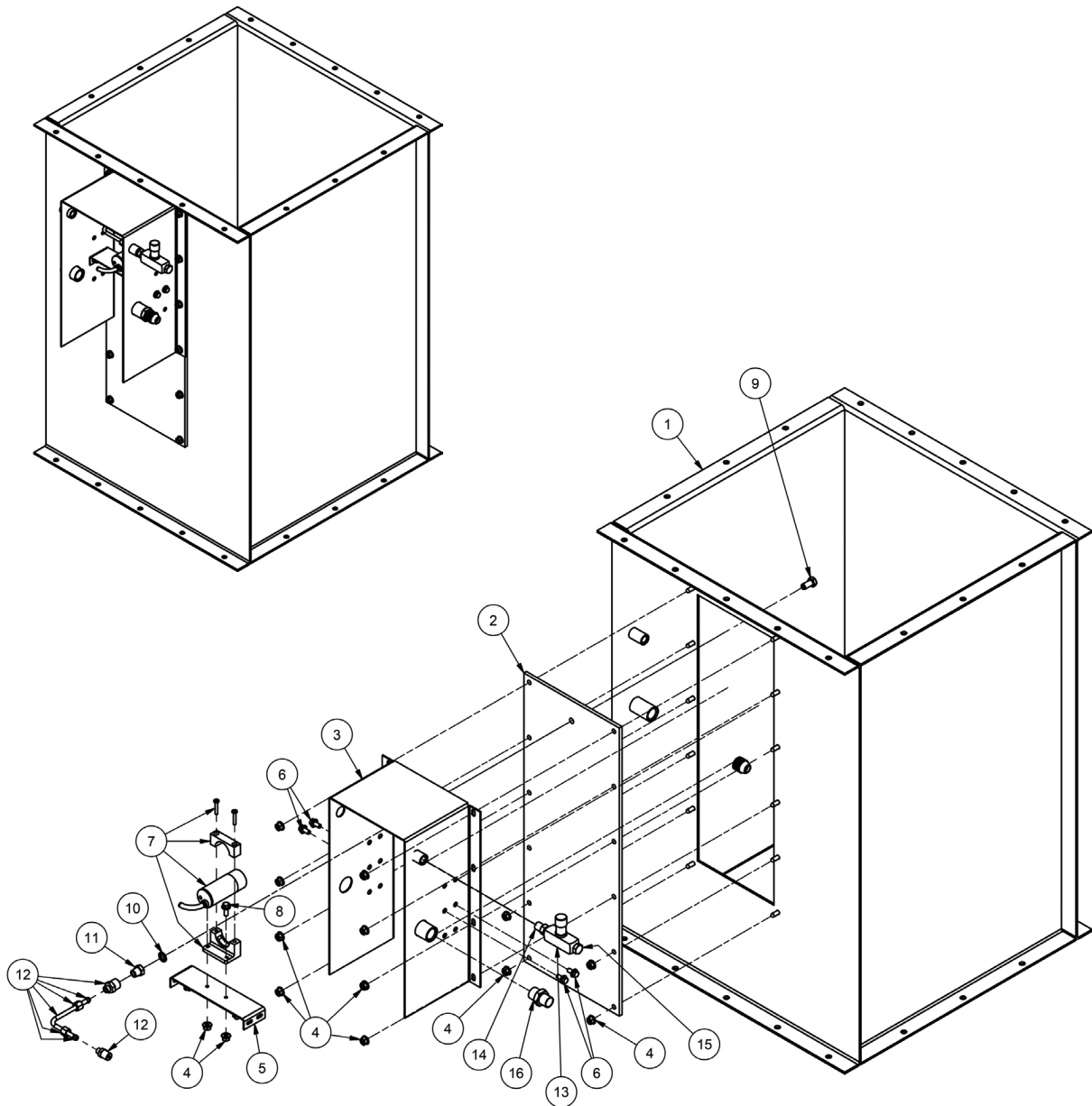
Plunger & Main Cylinder



Item	Part No.	Qty	Description	Item	Part No.	Qty	Description
903361 Plunger/Main Cylinder							
1	PLG0025503	1	. Frame, Plunger	19	253969	1	. Cylinder
2	PLG0021900	2	. Slide, Top Plunger		256463	1	. Seal Kit
3	PLG0025903	2	. Plate, Backup	20	209715	1	. Fitting
4	PLG0021920	2	. Slide, Bottom Plunger	21	209147	1	. Fitting
5	PLG0021923	1	. Bar, Bottom	22	SHM0021922	8	. Shim
6	PLG0021924	1	. Plate, Bottom Backup	23	902892	4	. Plate, Shim
7	PLG2192500	1	. Plate, LH	24	903355	1	. Clamp Weldment
8	PLG2192501	1	. Plate, RH	25	SMS0000180	1	. Screw, Ser Flg
9	PLG2192600	1	. Plate, LH Backup	26	09411507	1	. Nut
10	PLG2192601	1	. Plate, RH Backup	27	SMFS000304	32	. Screw, Machine
11	PLG2192700	1	. Wiper, LH Plunger	28	231851	16	. Nut, Esna
12	PLG2192701	1	. Plate, RH Top	29	233569	48	. Lockwasher
13	PLG2192800	1	. LH Top Wiper Backup	30	NCHS000375	25	. Hex Nut
14	PLG2192801	1	. Plate, RH Backup	31	231853	32	. Washer
15	ROD0024910	1	. Rod	32	233465	32	. Capscrew
16	247008	4	. Jam Nut	33	SQSS375200	8	. Set Screw
17	Y01F-0640	2	. Cotter Pin				
18	902209	2	. Pin				

Rev B

Infeed Chute



Item	Part No.	Qty	Description	Item	Part No.	Qty	Description
	903362		Infeed Chute				
1	902139	1	. Chute	12	TBE0261300	1	. Tube Assembly
2	WND0024498	1	. Window	*a	HYD6600404	1	. . 1/4 Female Connector
3	BKT0026116	1	. Mounting Bracket	*a	F000008221	1	. . 1/4 Male Connector
4	09416918	18	. Nut, Serrated	*a	45990032	7"	. . Copper Tube
5	BKT0023959	1	. Bracket	13	VLV0000400	1	. 1/4 Needle Valve
6	SMS0000173	4	. Screw, Serrated Flange	14	229500	1	. Fitting
7	254163	1	. Sensor, Prox	15	HYD3152040	1	. Fitting
8	SMS0000300	2	. Screw, Serrated Flange	16	27663	1	. Connector, Cord
9	VLV0026113	1	. Capscrew				
10	204389	1	. Seal				
11	BSH0026123	1	. Fitting				
				*a	Included in Tube Assembly (TBE0261300)		

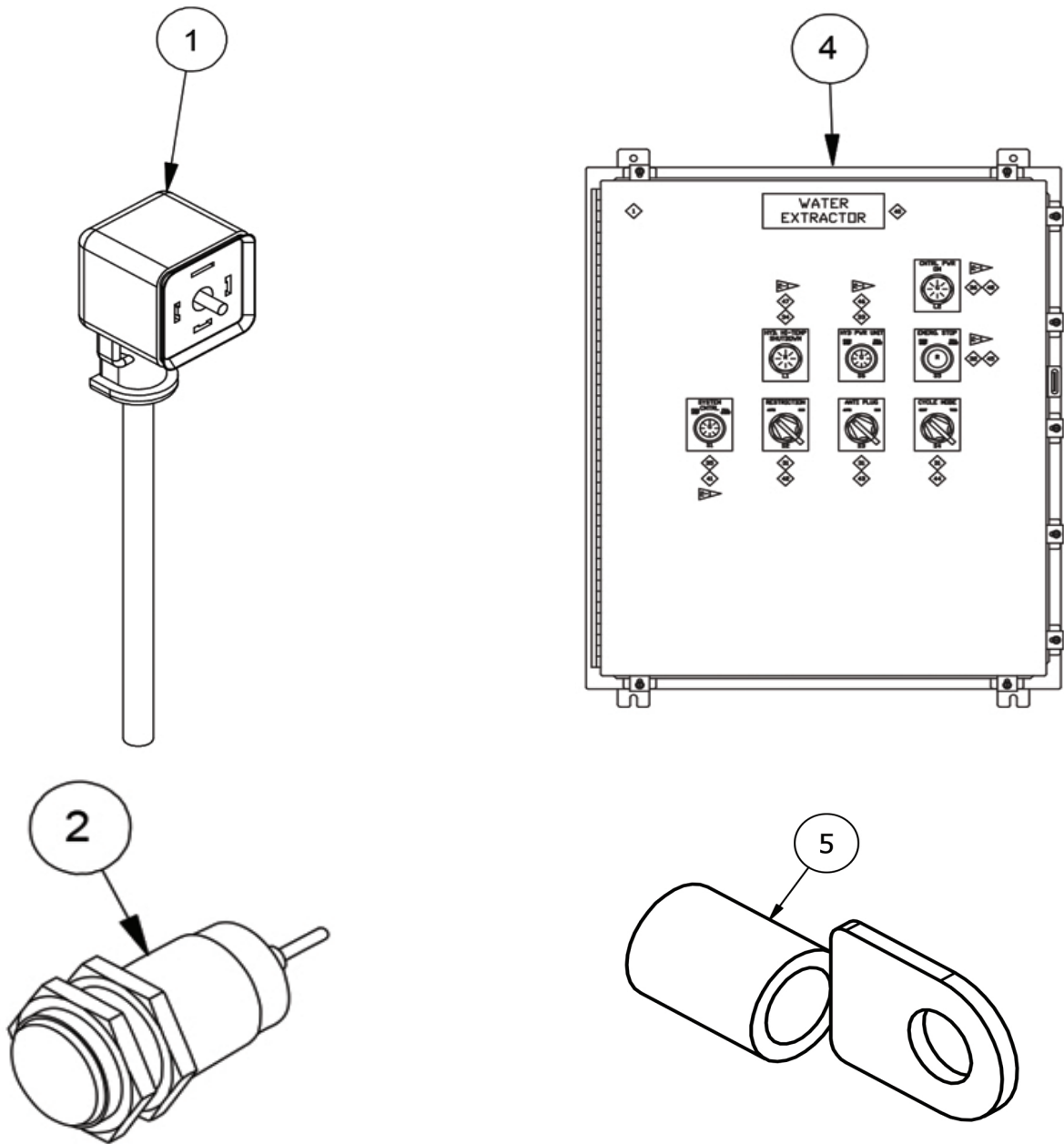
This page is intentionally left blank.

Section 2
Electrical System

Electrical System..... 2-3
 . Control Panel 2-4

This page is intentionally left blank.

Electrical System



Item	Part No.	Qty	Description	Item	Part No.	Qty	Description
	910471		Electrical System				
1	255654	5	. Connector	4	*a 910475	1	. Panel, Control
2	244112	3	. Proximity Switch	5	210210	9	. Terminal, Ring

*a See Separate Coverage (See Page 2-4)

Rev A

Control Panel

Page 1 of 5

BOM			
ITEM	QTY	ASC PART#	DESCRIPTION
1	1	256185	NEMA 4X ENCLOSURE 30X24X8
2	1	256186	BACK PANEL 27X21
3	2	-----	1.5 X 3 x 6FT WIREWAY
4	2	-----	1.5 WIREWAY COVER (6FT)
5*	1	910477	CONTROLLER MODULE PROGRAMMED
6*	1	89004	CONNECTOR KIT, MC43 C2
7*	1	89012	CONNECTOR KIT, MC43 C1
8*	1	602536	IQAN ID TAG, MOLEX; 20085140 (1T), R# 597550
9	1	260949	ETHERNET PORT, RJ45
10	1	254146	100-240VAC TO 24VDC, 5A POWER SUPPLY
11	1	256209	GFCI 120VAC/20A
12	1	-----	DIN RAIL 35/7.5 PERF DIN 2 METER LG
13	3	-----	120 V FUSE BLOCK
15	2	256191	24 V FUSE BLOCK
16	2	256190	FUSE END PLATE
17	19	256193	TERMINAL BLOCK
18	4	256194	END PLATE
19	14	250697	JUMPER
20	37	256195	TERMINAL BLOCK
22	-	-	-
23	-	-	-
24	7	256198	GROUNDING TBS
25	8	256199	END STOP
26	5	256200	POTENTIOMETER 5W, 10K
27	5	256201	POTENTIOMETER KNOB
28*	1	905487	MOUNTING BRACKET, POTENTIOMETER
29	1	256018	2PDT 120 VAC RELAY
30	1	256017	RELAY BASE
31	3	256203	2 POS SEL SW MAINT
32	1	256204	EM STOP PUSH/PULL MAINT
33	1	256207	START/STOP MAINT. 120 VAC LIGHT
34	1	256206	IND LIGHT RED 120VAC
35	1	256207	START/STOP MAINT 24VDC LIGHT
36	1	256208	IND LIGHT GREEN 120VDC
37	1	256210	1/2" X 2" - "TB-A"
38	1	256211	1/2" X 2" - "TB-B"
39	1	256212	1/2" X 2" - "GROUND"
40	1	256213	1/2"X 2-"WATER EXTRACTOR"
41	1	256214	3 X 2.5-"SYSTEM CNTRL"
42	1	256215	3 X 2.5 "RESTRICTION"
43	1	256216	3 X 2.5 "ANTI PLUG"
44	1	256217	3 X 2.5-"CYCLE MODE"
45	1	256218	3 X 2.5-"EMERG. STOP"
46	1	LABEL	3 X 2.5-"HYD PWR UNIT"
47	1	256220	3 X 2.5-"HYD HI-TEMP SHUTDOWN"
48	1	256221	3 X 2.5-"CNTRL PWR ON"
49	1	256020	RELAY
50	1	256019	RELAY SOCKET
51	2	246933	FUSE, 10A
52	1	243609	FUSE, 3A
53	1	243577	FUSE, 5A
54	-	-	-
55	1	256192	FUSE, 7A
56	-	-	-
57	1	906861	LABEL, POTENTIOMETER

NOTES:

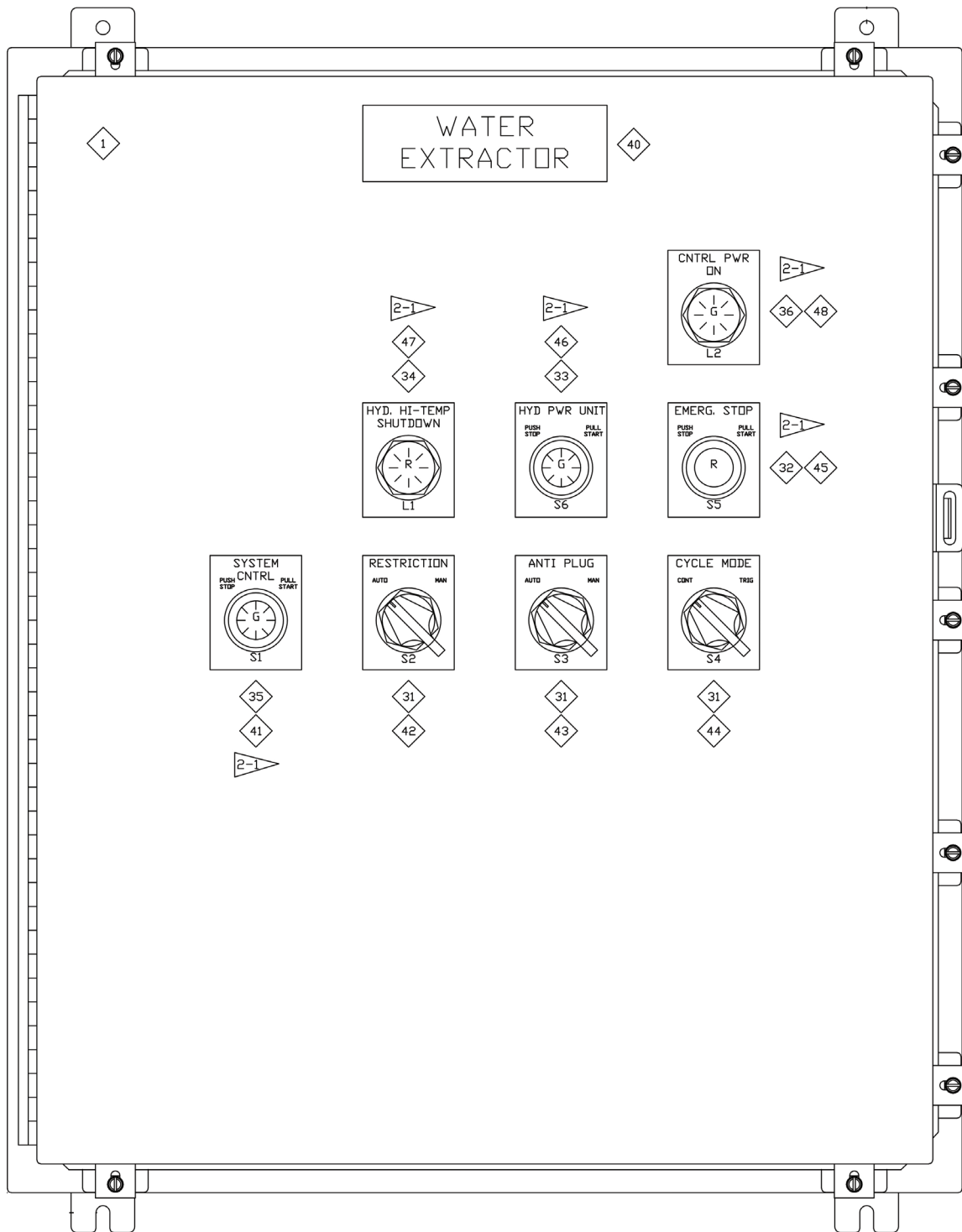
1-1 ITEM NUMBERS WITH AN ASTERISK (*)
ARE ASC SUPPLIED. ALL OTHER PARTS
ARE REFERENCE AND SOURCED BY THE
VENDOR

1-2 PARTS SUPPLIED BY VENDOR CAN BE
SUBSTITUTED, BUT MUST BE EQUAL OR
BETTER.

1-3 ALL LEGEND PLATES ARE BLACK
BACKGROUND WITH WHITE TEXT. REFER
TO SEPARATE VIEWS FOR REQUIRED TEXT
AND FORMATTING OF LABEL..

Control Panel

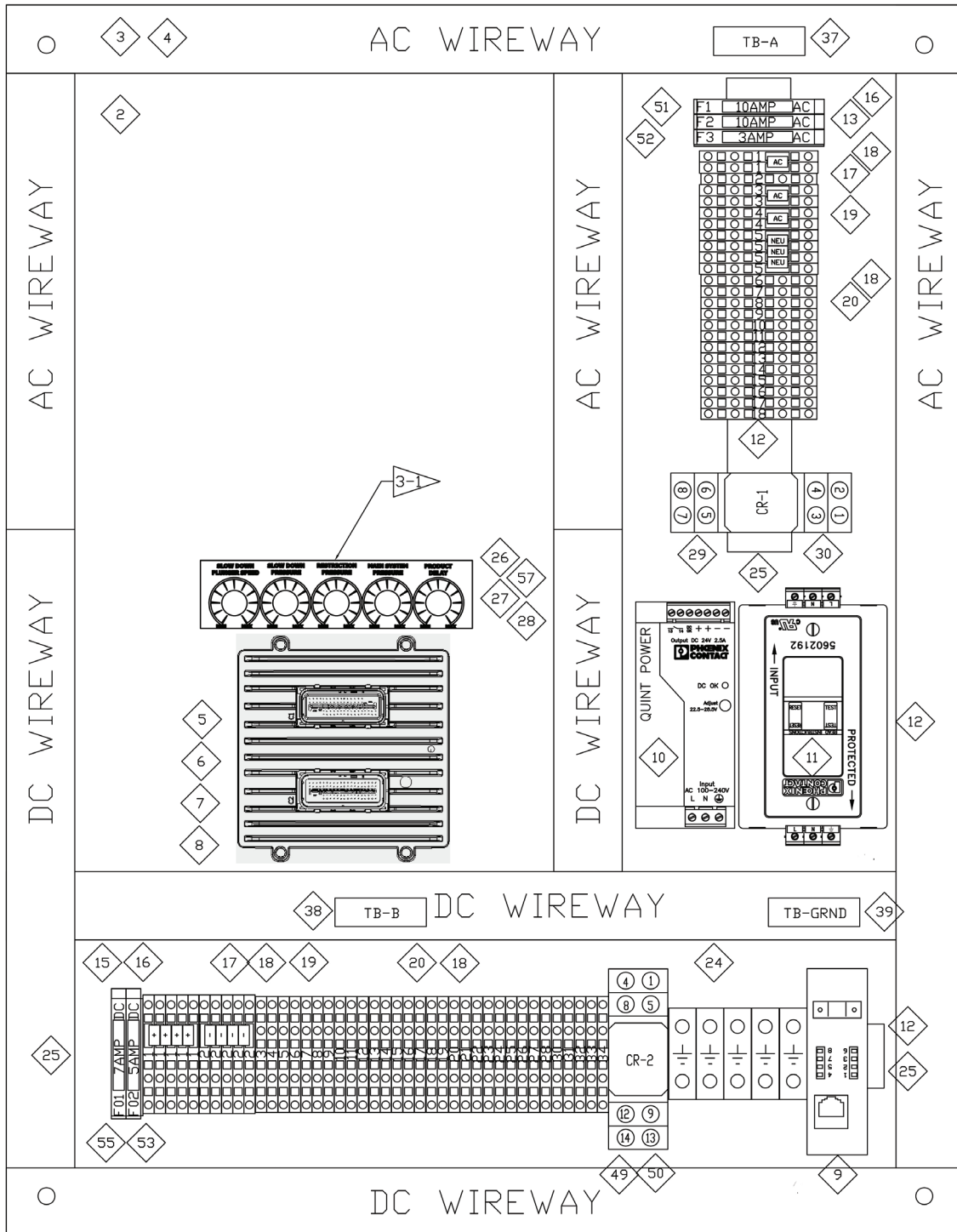
Page 2 of 5



2-1 NOTES:
LETTERS ON OPERATOR
CONTROL INDICATES COLOR
G = GREEN
R = RED

Control Panel

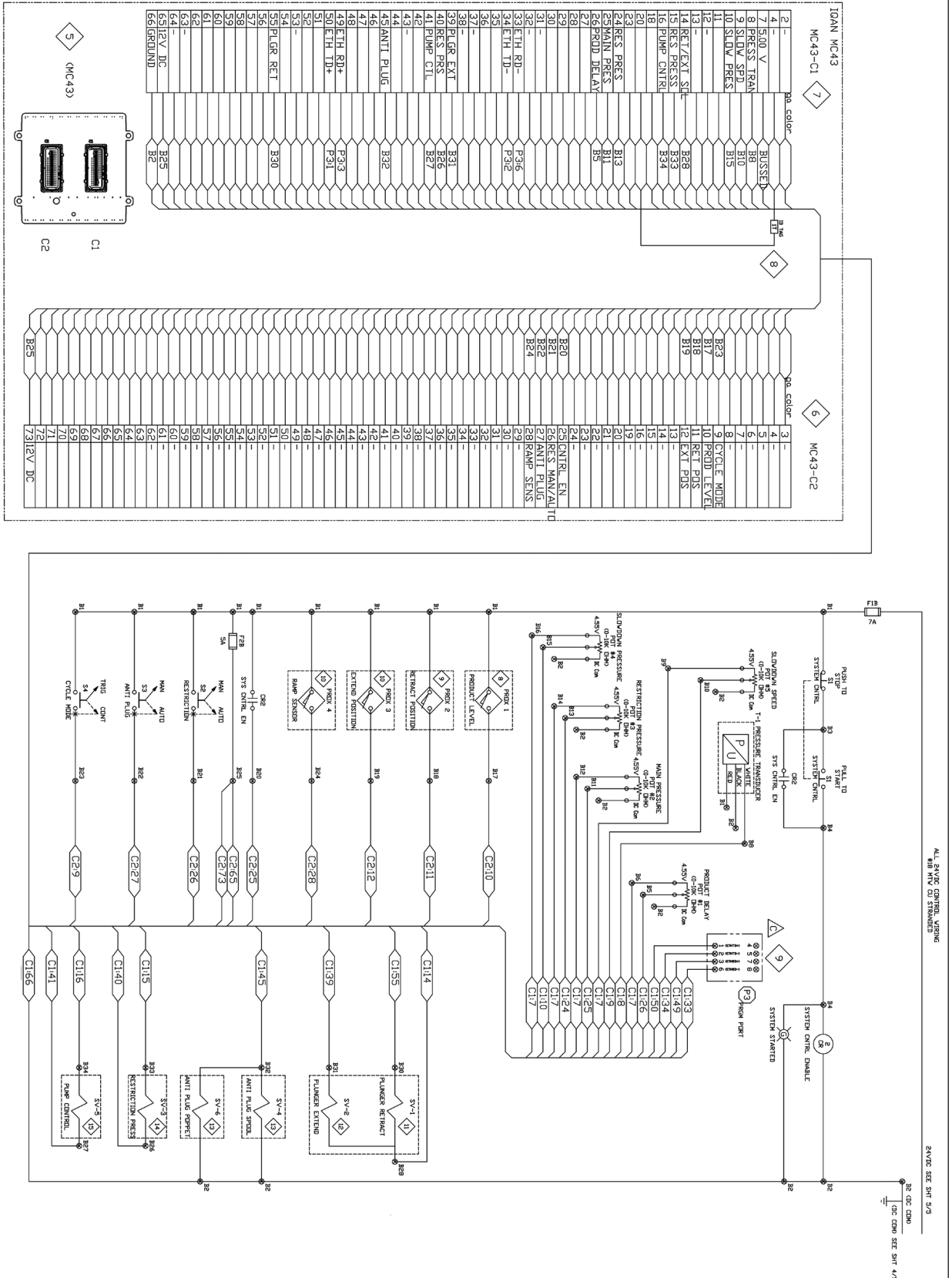
Page 3 of 5



NOTES:
 3-1 REFER TO DRAWING
 906861 FOR LABEL
 DIMENSIONS AND
 FORMATTING

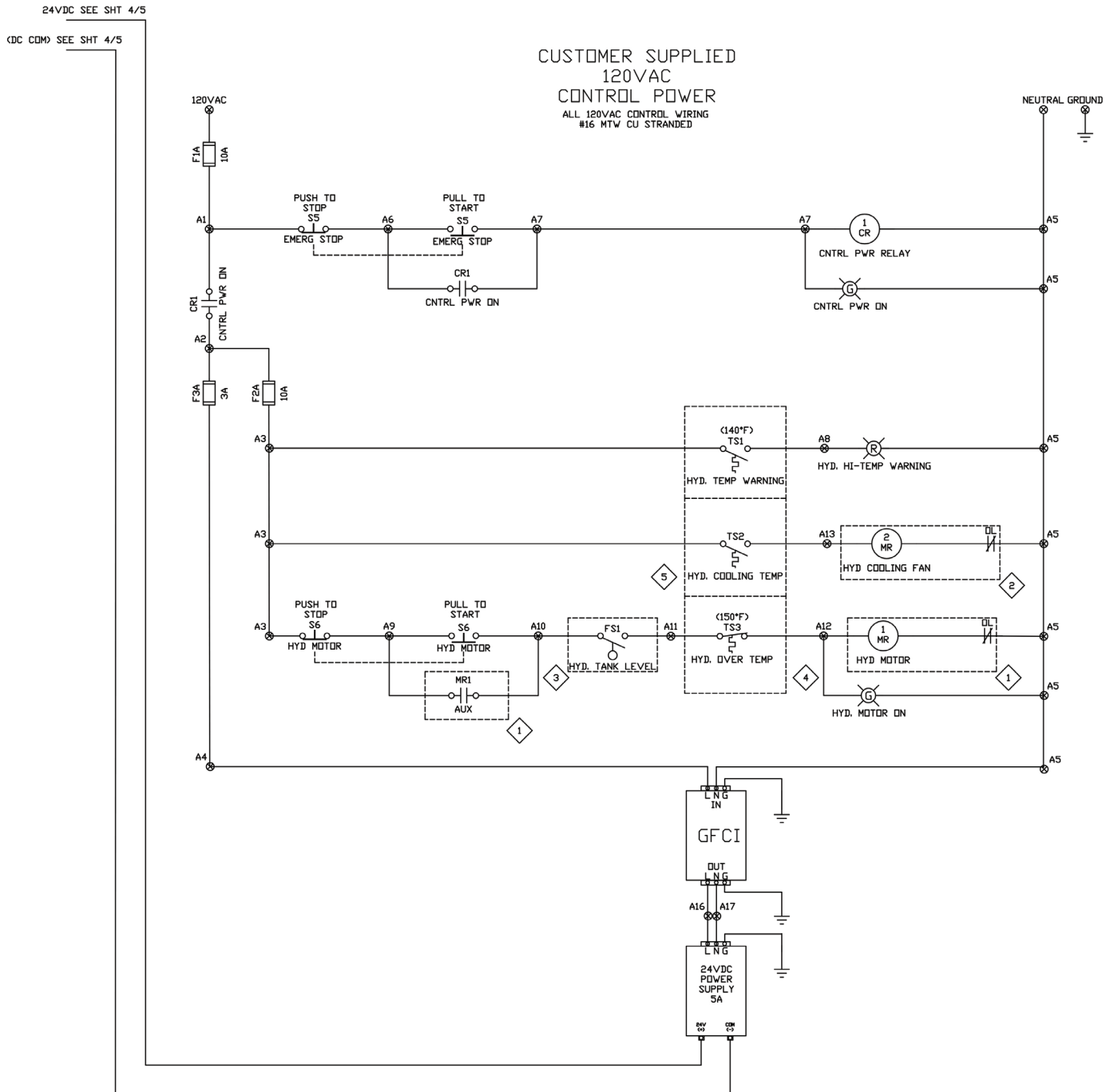
Control Panel

Page 4 of 5



Control Panel

Page 5 of 5



Section 3
Hydraulic/Power System

Hydraulic Power Unit (460 VAC Motor)..... 3-3

 . Hydraulic Tank 3-6

 . Control Manifold 3-7

 . Junction Box 3-8

Hoses and Fittings..... 3-9

This page is intentionally left blank.

Hydraulic Power Unit (460 VAC Motor)

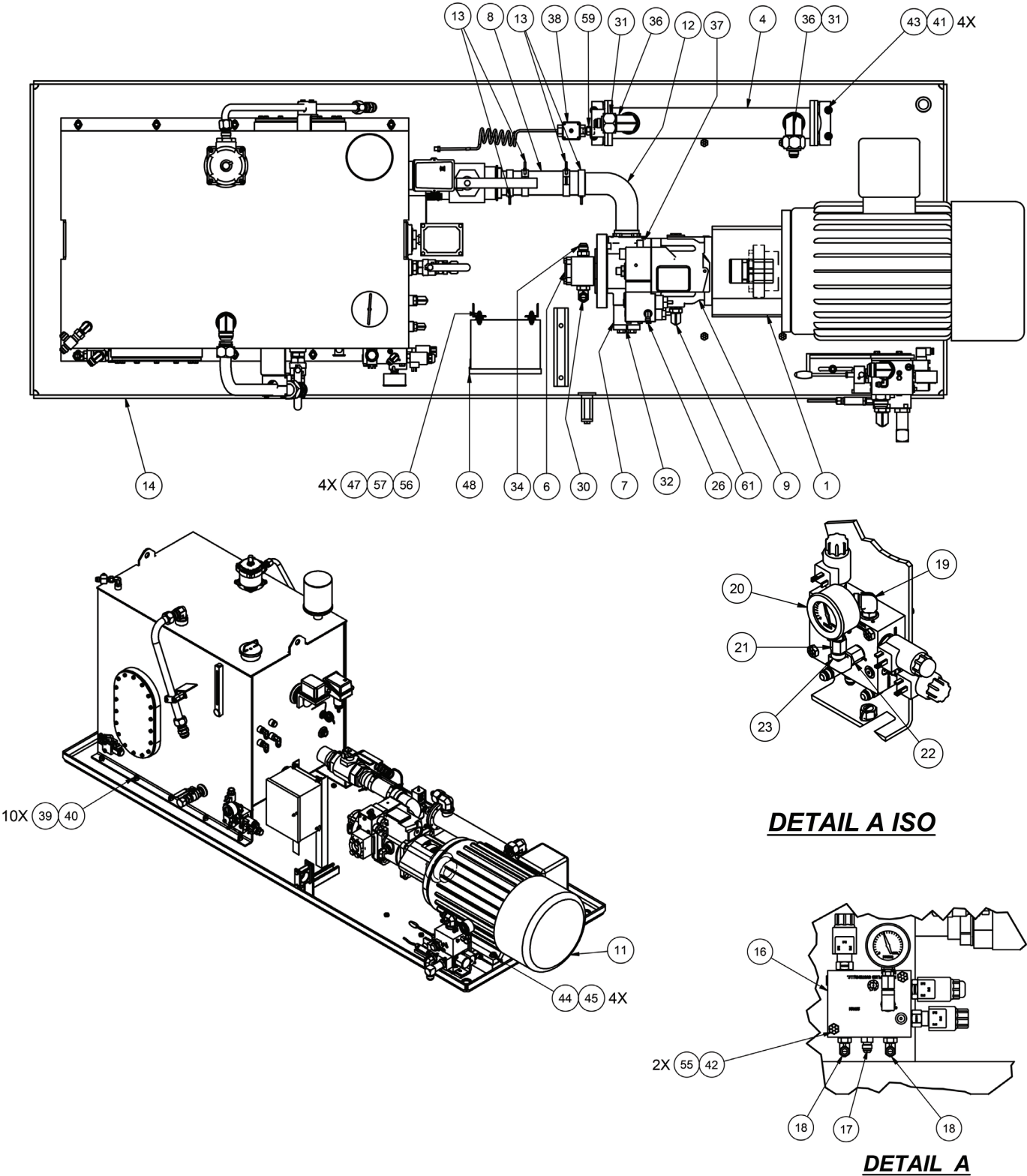
Page 1 of 3

Item	Part No.	Qty	Description	Item	Part No.	Qty	Description
	910474		Power Unit (460 VAC Motor)				
1	253971	1	. Adapter	33	229384	2	. Fitting
2	253972	1	. Coupling	34	210774	1	. Fitting
3	253973	1	. Coupling	36	209137	2	. Fitting
4	255722	1	. Heat Exchanger	37	23390	1	. Kit, Split Flange
5	253976	1	. Valve		225328	2	. . Clamp Half
6	253977	1	. Pump		203523	1	. . O-Ring
7	253978	1	. Check Valve		221569W	4	. . Capscrew
8	201440-9	1'	. Suction Hose		221771W	4	. . Washer
9	253981	1	. Pump	38	255723	1	. Valve, Water Modulating
10	903007	1	. Bracket	39	15135W	10	. Washer
11	253990	1	. 460 VAC Motor	40	221711W	10	. Hex Nut
12	254155	1	. Fitting	41	221767W	6	. Washer
13	225369	4	. T-Bolt Clamp	42	R13811043	2	. Capscrew
14	902452	1	. Tray Weldment, HPU	43	162572W	4	. Capscrew
15	*a 903662	1	. Hydraulic Tank	44	Y17C-1028	4	. Capscrew
16	*c 255121	1	. Manifold, Control	45	YSPS-0003-LCSSM	4	. Washer
17	211560	1	. Fitting	46	237567	2	. Nut, Lock
18	R13801972	2	. Fitting	47	F000007550	4	. Grommet
19	224298	1	. Fitting	48	*b 910502	1	. Junction Box
20	214203	1	. Gauge	50	905545	1	. Valve
21	225648	2	. Snubber, Gauge	51	18473W	2	. Capscrew
22	20856	2	. Fitting	52	221763W	2	. Washer
23	223638	2	. Fitting	53	SMS0000180	4	. Screw, Ser Flg
24	231135	1	. Gauge	54	906845	2	. Spacer, Valve
25	529950	1	. Fitting	55	09411507	2	. Nut
26	11860	2	. Fitting	56	15113W	4	. Nut, Lock
27	209619	1	. Fitting	57	Y01C-0416	4	. Capscrew
28	15325	1	. Fitting	58	254535	1	. Transducer
29	209715	1	. Fitting	59	209161	1	. Fitting
30	209490	2	. Fitting	60	222886	1	. Fitting
31	234591	2	. Fitting	61	19990	1	. Fitting
32	229449	1	. Kit, Split Flange				
	225328	2	. . Clamp Half		*a	See Separate Coverage (See Page 3-6)	
	203446	1	. . O-Ring		*b	See Separate Coverage (See Page 3-8)	
	R13811077	4	. . Capscrew		*c	See Separate Coverage (See Page 3-7)	
	221771W	4	. . Washer				

Rev C

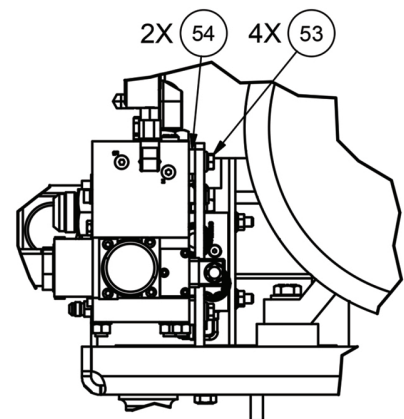
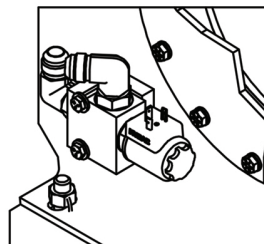
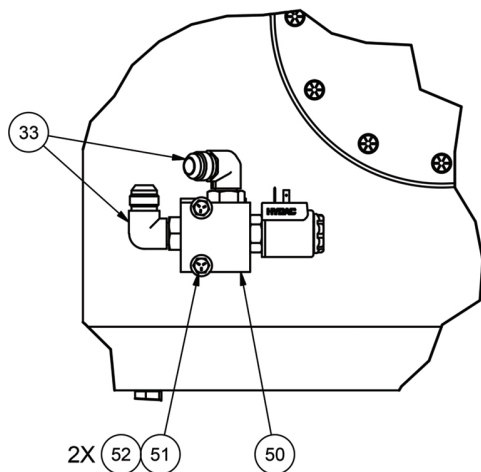
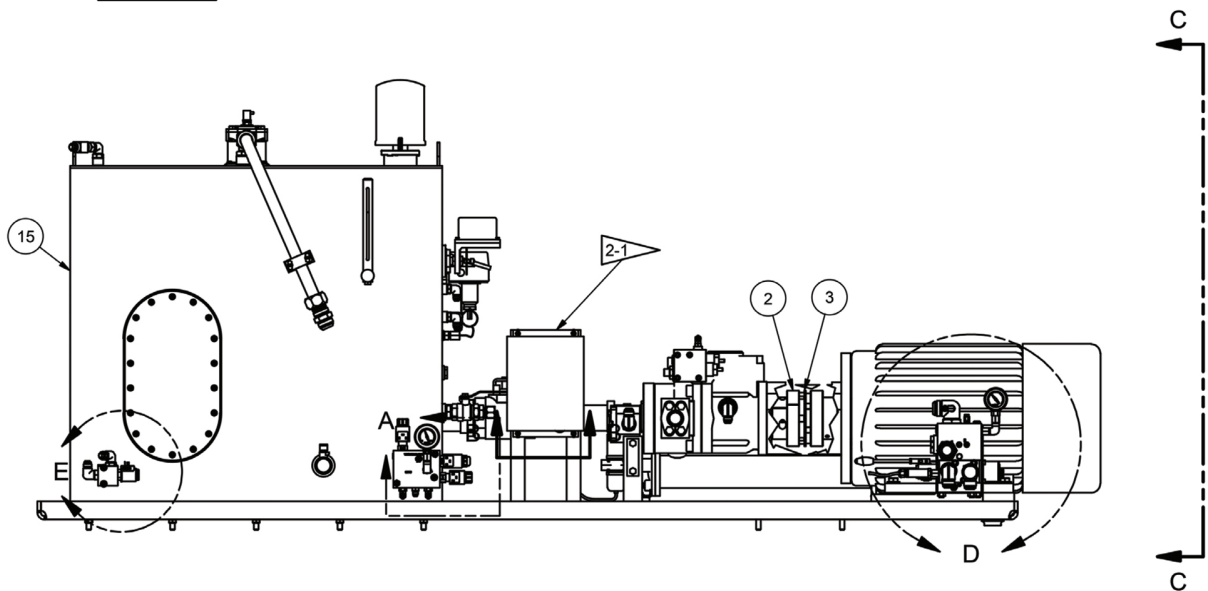
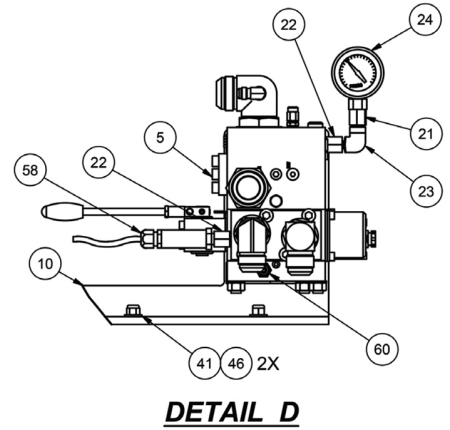
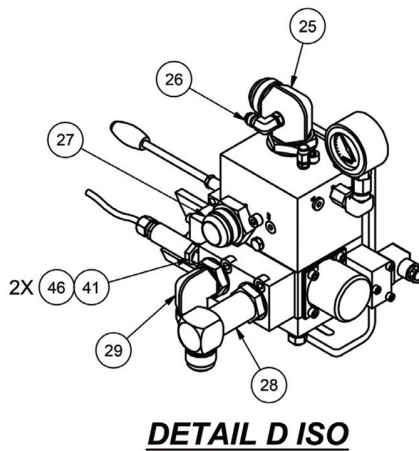
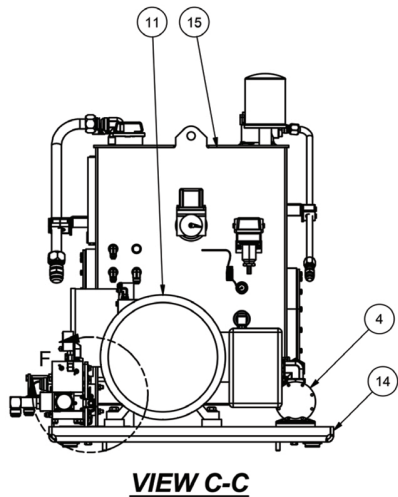
Hydraulic Power Unit (460 VAC Motor)

Page 2 of 3

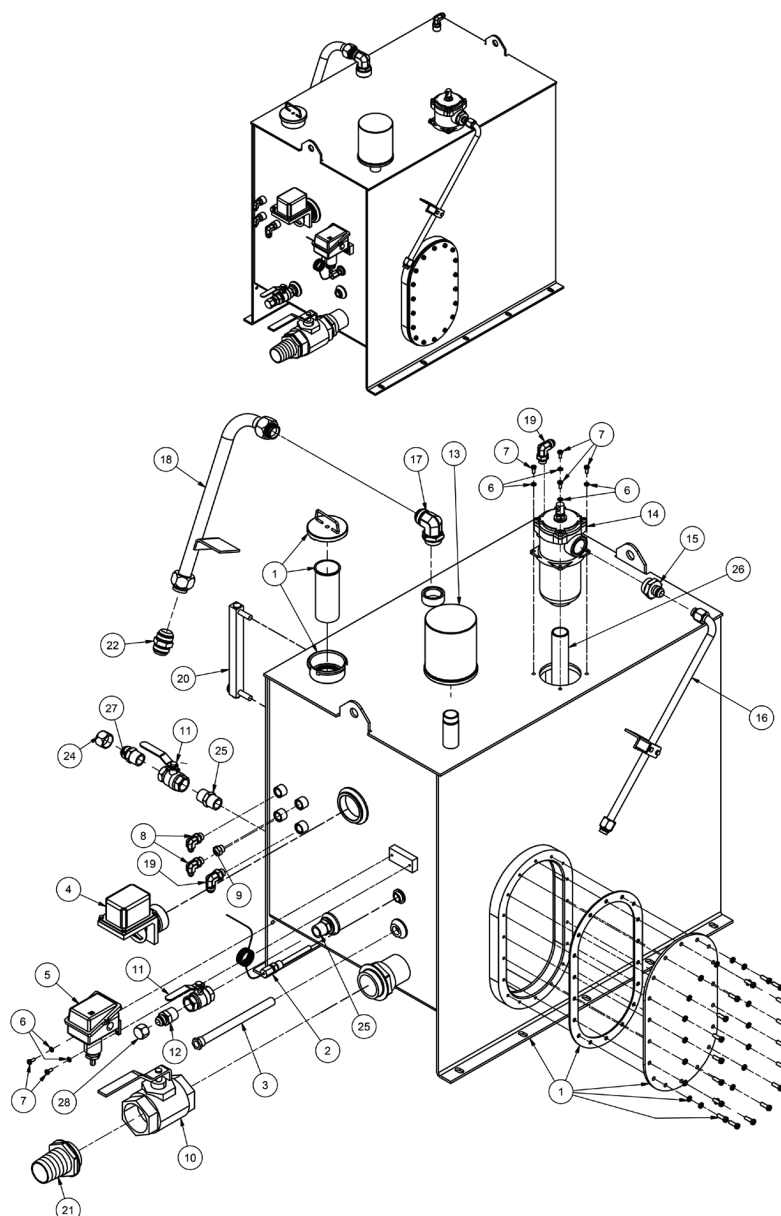


Hydraulic Power Unit (460 VAC Motor)

Page 3 of 3



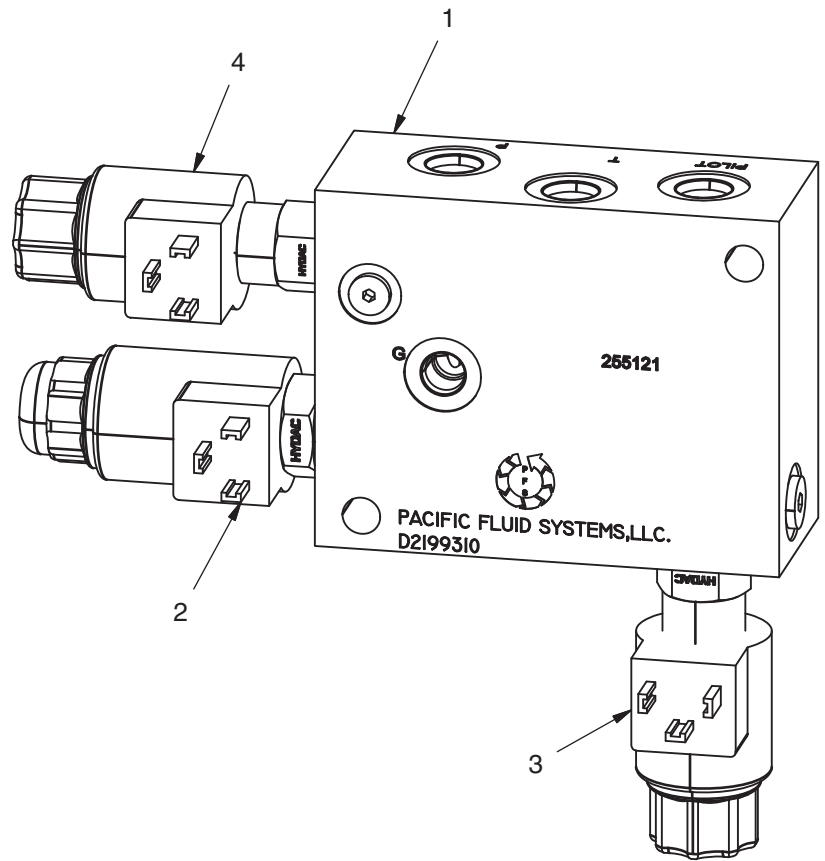
Hydraulic Tank



Item	Part No.	Qty	Description	Item	Part No.	Qty	Description
	903662		Tank,Hydraulic				
1	902516	1	. Tank, Hydraulic	15	23408	1	. Fitting
2	254006	1	. Thermowell	16	902279	1	. Tube Assembly
3	255724	1	. Thermowell	17	209714	1	. Fitting
4	SWI0059037	1	. Switch, Float	18	902993	1	. Tube Assembly
5	253673	1	. Switch, Temp	19	229384	2	. Fitting
6	R13812512	6	. Lockwasher	20	253675	1	. Gauge, Sight Level
7	R13810990	6	. Capscrew	21	253420	1	. Fitting
8	23945	2	. Fitting	22	209443	1	. Fitting
9	210709	1	. Fitting	24	209091	1	. Fitting
10	254007	1	. Ball Valve	25	209997	2	. Fitting
11	253678	2	. Ball Valve	26	902960	1	. Pipe
12	209533	1	. Fitting	27	209761	1	. Fitting
13	256179	1	. Breather	28	209090	1	. Fitting
14	906653	1	. Filter Assembly, In-Line				
	255996		. . Replacement Element				

Rev C

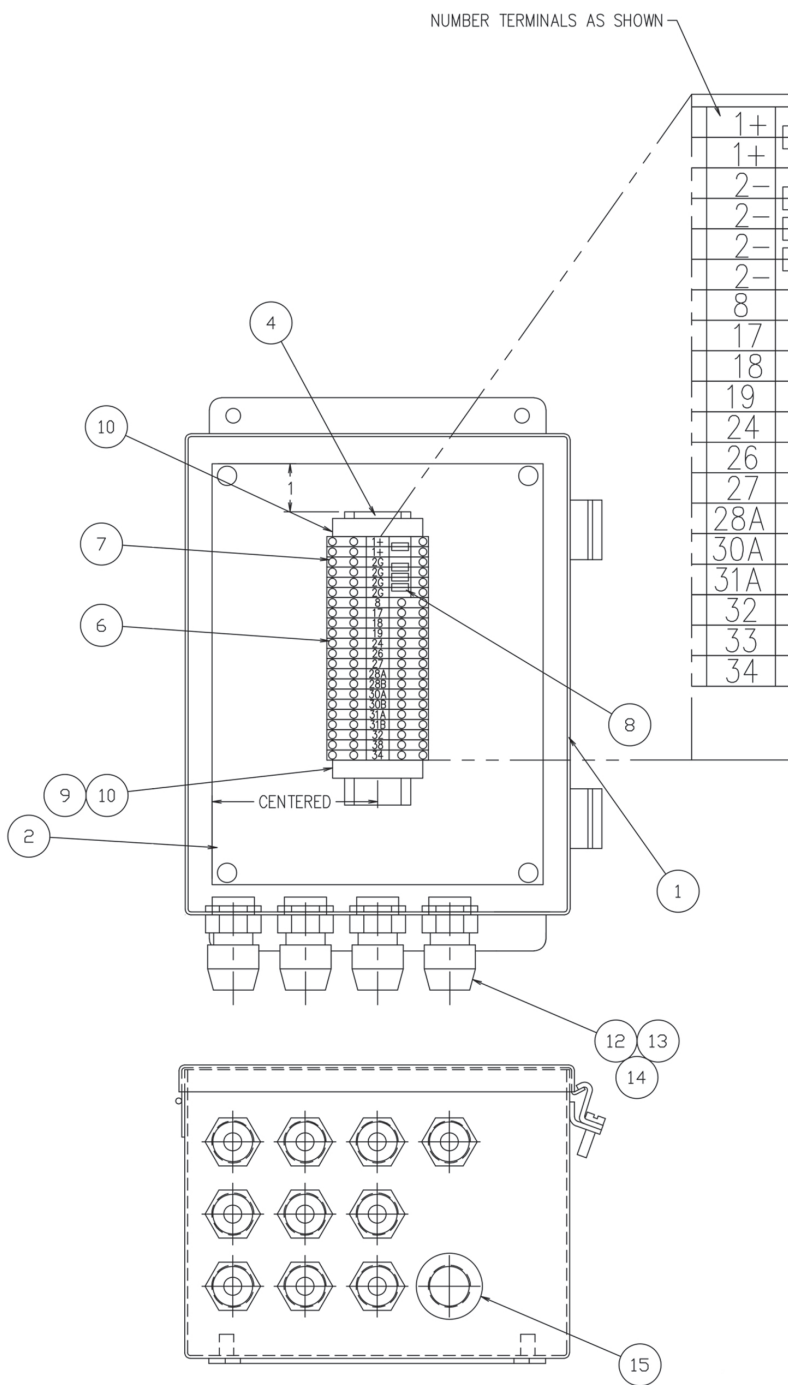
Control Manifold



Item	Part No.	Qty	Description	Item	Part No.	Qty	Description
	255121		Manifold, Control				
1	255167	1	. Valve Body	4 *a	253979	1	. Cartridge, Valve
2	256264	1	. Valve, Cartridge	4 *b	255169	1	. Cartridge, Valve
3	256021	1	. Relief Valve				
3.1	906737	1	. . Kit, Seal				
3.2	908683	1	. . Relief Valve				
3.3	908684	1	. . Coil, Solenoid				

*a Used on machines ASC-0WE4-463, ASC-0WE5-502 and earlier
*b Used on machines ASC-0WE4-464, ASC-0WE5-503 and later

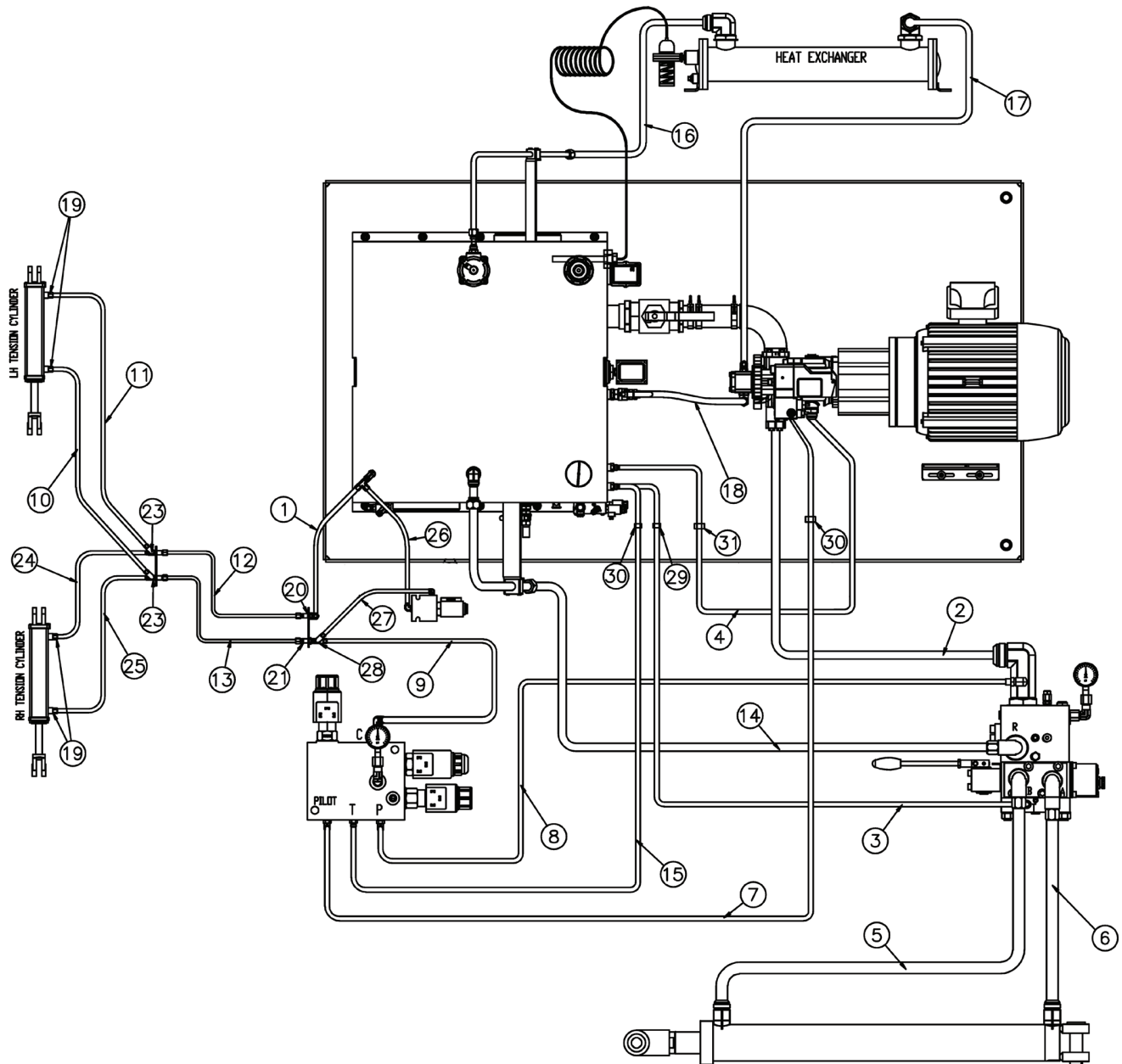
Junction Box, WE4/WE5



Item	Part No.	Qty	Description	Item	Part No.	Qty	Description
	910502		Junction Box Assembly				
1	903001	1	. Box	10	241761	2	. End Stop
2	22623	1	. Panel, Back	12	27663	10	. Connector, Cord
4	22628	6IN	. Rail	13	RNG0005262	10	. Ring, Seal
6	239317	13	. Terminal Block	14	220582	10	. Ring Nut
7	232237	6	. Terminal Block	15	227023	1	. Plug, Knockout
8	232239	4	. Jumper				
9	232238	1	. Seperator, Terminal Block				

Rev A

Hoses and Fittings



Item	Part No.	Qty	Description	Item	Part No.	Qty	Description
902996 Hoses and Fittings							
1	255381	1	. Hose Assembly	15	HOS036662A	1	. Hose Assembly
2	255382	1	. Hose Assembly	16	209172	1	. Hose Assembly
3	255383	1	. Hose Assembly	17	21570	1	. Hose Assembly
4	255384	1	. Hose Assembly	18	225141	1	. Hose Assembly
5	255385	1	. Hose Assembly	19	229384	4	. Fitting
6	255386	1	. Hose Assembly	20	243248	1	. Fitting
7	255387	1	. Hose Assembly	21	244093	1	. Fitting
8	255388	1	. Hose Assembly	23	HYD5725050	2	. Fitting
9	255389	1	. Hose Assembly	24	256844	1	. Hose Assembly
10	255463	1	. Hose Assembly	25	256845	1	. Hose Assembly
11	255464	1	. Hose Assembly	29	258027	1	. Clamp
12	902237	1	. Tube Assembly	30	258028	2	. Clamp
13	902238	1	. Tube Assembly	31	258029	1	. Clamp
14	256843	1	. Hose Assembly				

Rev B

This page is intentionally left blank.

This page is intentionally left blank.



To find a dealer in your area,
Call: 503-625-2560,
Fax: 503-625-7269, or
Visit our website: <http://www.alliedsystems.com>

Allied Systems
COMPANY

PB000WE420 5/2025

Printed in USA