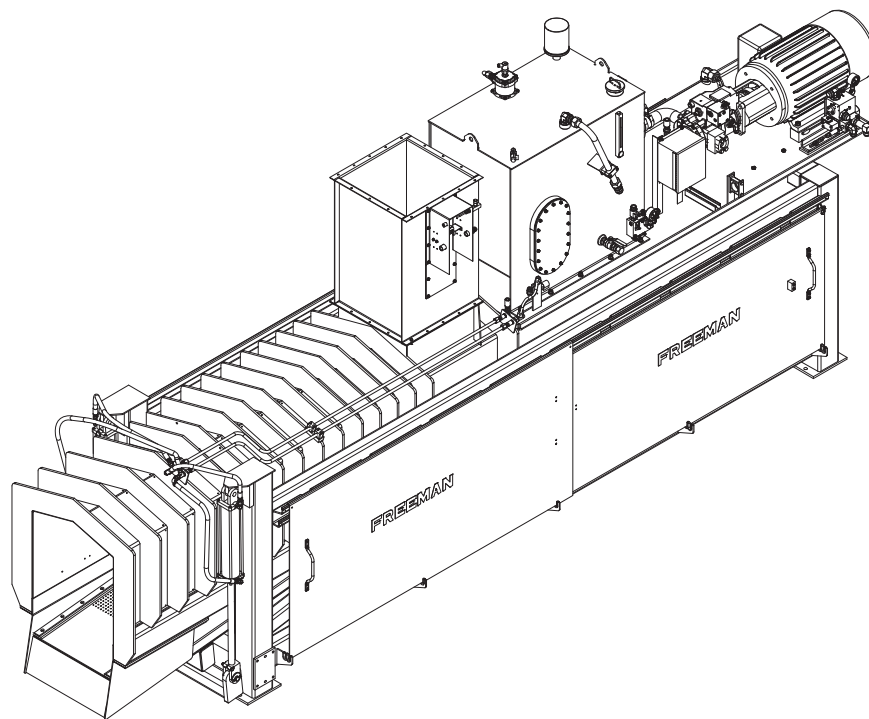



## MODEL WE-4 WATER EXTRACTOR



## 2011 PARTS LIST

S/N:	STARTING WITH S/N ASC-0WE4-465
	<b>Important:</b> Be certain to specify the serial number of your Water Extractor when ordering parts.

## SAFETY PRECAUTIONS

### “THE BEST SAFETY DEVICE IS A CAREFUL OPERATOR”

**Do not** clean, lubricate, or make any adjustments on the equipment while it is in operation.

**Do not** start the equipment until you are certain everyone is clear of the machine and have ensured there are no tools on the unit.

**Do not** work around equipment in loose clothing.

**Do not** attempt to service any equipment while the motor is running.

Inspection Covers and Safety Shields should only be removed by authorized service persons.

After servicing **do not** place the equipment back into operation until all Safety Shields and Devices have been replaced. Operation without Safety Shields and Devices can place the operator into a hazardous situation.

**Do not** open or work on the In-Feed System until the flow of material has been stopped and the Water Extractor Motor has been turned off.

**Do not** make any adjustments or reach under any load bearing surfaces while they are loaded.

### INSTRUCT ALL OPERATORS ON SAFETY PRECAUTIONS.



**WARNING: SOME ILLUSTRATIONS IN THIS PARTS LIST SHOW THE WATER EXTRACTOR WITHOUT SHIELDS TO ALLOW FOR A BETTER VIEW OF THE AREA BEING ADDRESSED. THE WATER EXTRACTOR SHOULD NEVER BE OPERATED WITH ANY OF THE SAFETY SHIELDS REMOVED.**

## INTRODUCTION

### HOW TO USE THE MANUAL

This manual contains illustrations and parts lists of components and assemblies which make up the machine. Each page consists of the name of the assembly or component, a reference number, part number, part name and the quantities of the part used.

Assembly or component names help identify the illustration and parts list for each figure. This name also helps locate the general area of the machine where the assembly or component can be located.

Reference numbers shown in a column refers to the numbered parts in the illustration. This ties the part in the illustration to the part number and description in the parts list. Part numbers are used to identify individual parts or part assemblies

Part descriptions provide the name of the part, plus additional information such as dimensional specification and what parts are grouped together to form part assemblies, which helps you identify the parts.

Quantities listed for each illustration are only for that assembly or component and not the total used per machine.

Indent dots are used to indicate assemblies and sub-parts of assemblies. No dot indicates the major assembly. Part descriptions which are indented with dots are sub-parts of the major assembly shown above.

This parts manual is not intended to be a complete guide for machine service or repairs. Contact your dealer for any of your service or technical requirements.

### UPDATING AND REORDERING MANUALS

The parts lists, illustrations and specifications in this manual are based on the latest information available at the time of publication. Your machine may have product improvement and options not yet contained in this manual.

A copy of this manual is supplied with each machine. Additional copies are available through you dealer. When ordering additional manuals, use the reorder number listed on the front cover and the quantity needed.

## SERIAL NUMBER LOCATION AND BALER IDENTIFICATION

Each Freeman Water Extractor is identified by means of a water extractor model number and serial number. As a further identification, all power units are provided with a serial number.

To ensure prompt, efficient service when ordering parts or requesting repairs from your authorized Freeman dealer, record the serial numbers in the spaces provided.

### WATER EXTRACTOR SERIAL NUMBER \_\_\_\_\_

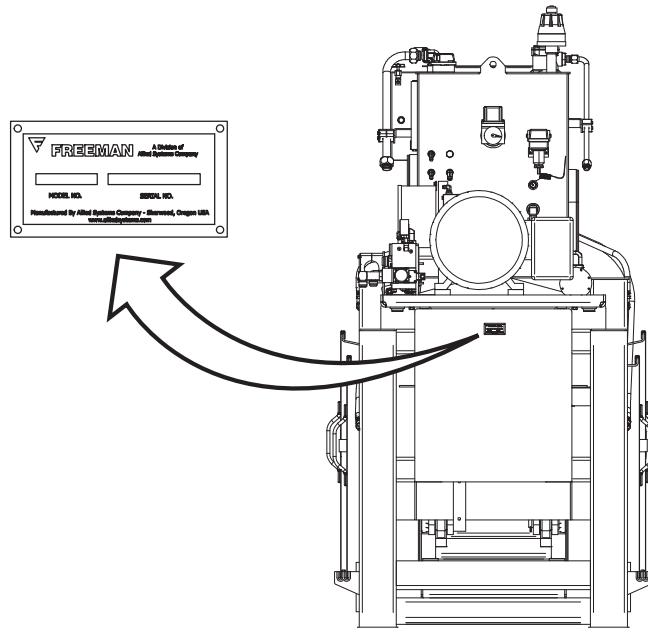
Front of water extractor frame under electric motor.

### POWER UNIT SERIAL NUMBER \_\_\_\_\_

Electric Motor- \_\_\_\_\_

Left side, near connection box.

NOTE: The motor and pump end is considered the front of the water extractor. The sides are described as left-hand side and right-hand side as viewed from behind while facing the discharge end of the water extractor.



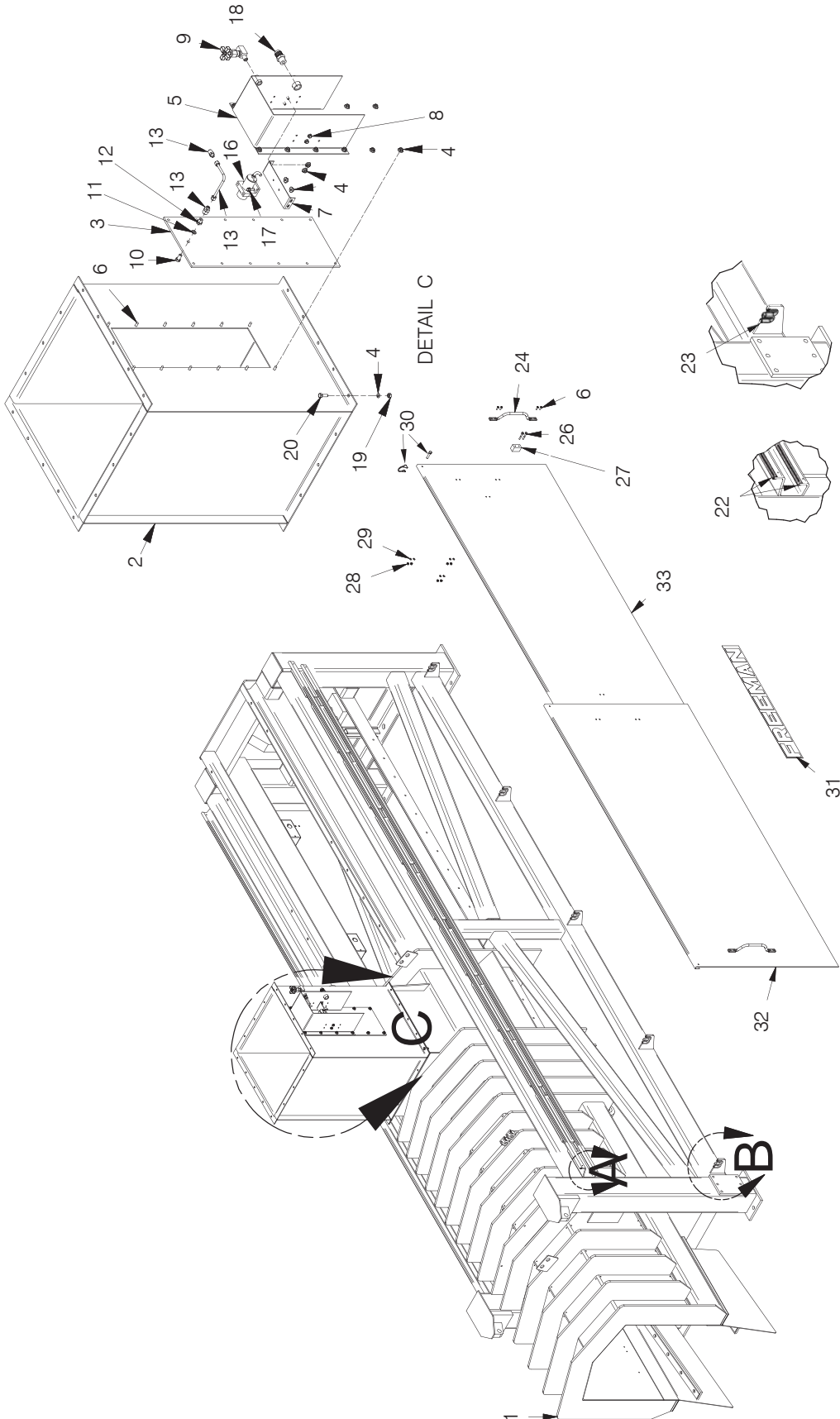
Starting with ASC-0WE4-464

---

**TABLE OF CONTENTS**

**CONTROL BOX ..... 24**  
**FRAME ..... 2**  
**HOSES ..... 12**  
**HYDRAULICS MANIFOLD ..... 22**  
**HYDRAULIC TANK ASSEMBLY ..... 20**  
**INDEX ..... 25**  
**JUNCTION BOX ..... 4**  
**MOTOR AND PUMP DETAIL ..... 18**  
**PLUNGER ..... 8**  
**PLUNGER SENSORS ..... 6**  
**POWER UNIT (575 VAC MOTOR) ..... 14**  
**RESTRICTOR RAIL ..... 10**

# FRAME



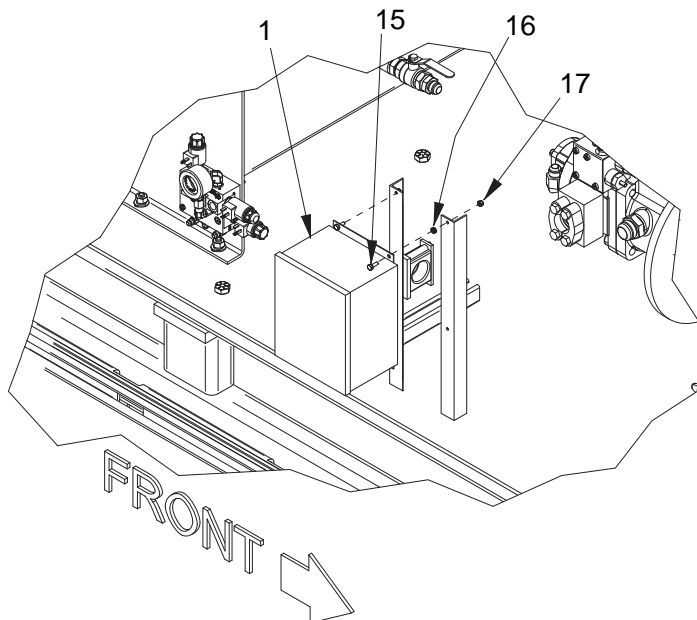
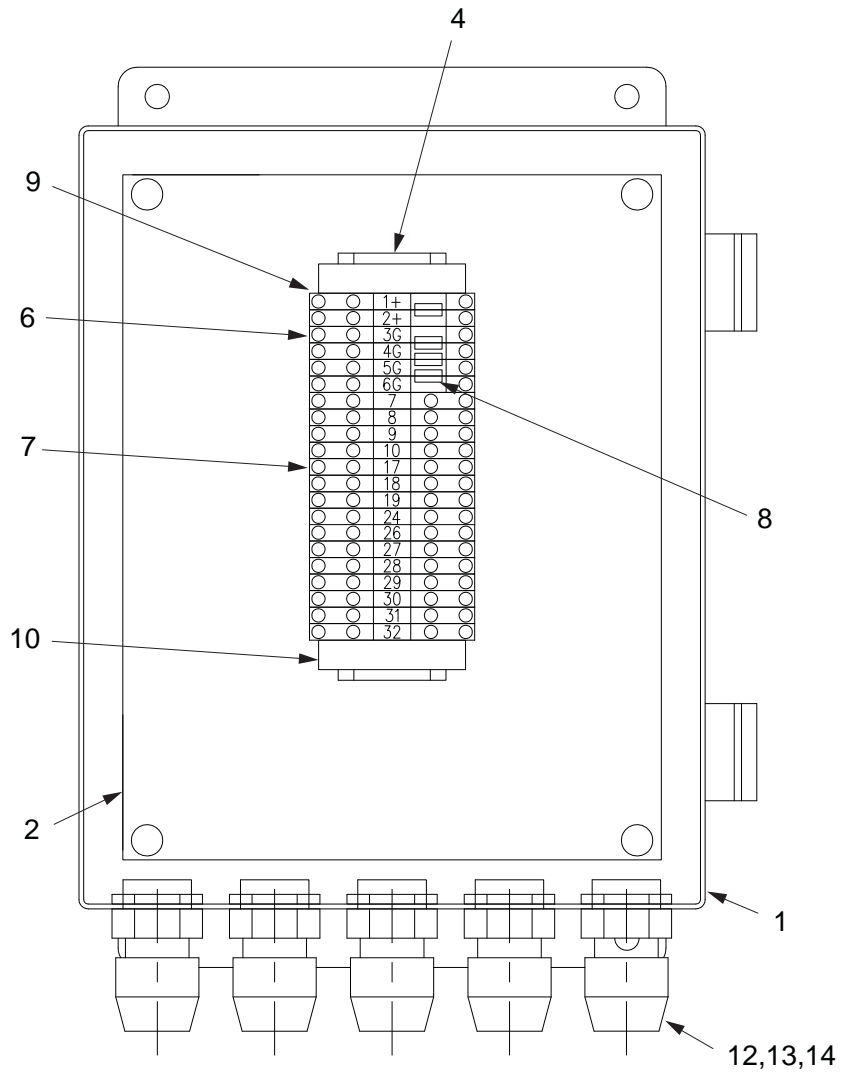
DETAIL A      DETAIL B

## FRAME

REF NO.	PART NO.	DESCRIPTION	QTY. USED
1	902468	FRAME ASSY,MAIN	1
2	902139	. CHUTE,INFEED	1
*	904071	. CHUTE SENSOR ASSY	
3	WND0024498	.. WINDOW	1
4	09416918	.. NUT, FLGD	12
5	BKT0026116	.. BRACKET, SENSOR MTG	1
6	SMTS001001	.. BOLT, TRUS HD (SS)	28
7	BKT0023959	.. BRACKET,	1
8	SMS0000173	.. BOLT, WHIZ (SS)	4
9	VLV0000400	.. NEEDLE VALVE	1
10	VLV0026113	.. AIR VALVE	1
11	204389	.. SEAL	1
12	BSH0026123	.. FITTING	1
13	TBE0261300	.. TUBE	1
16	254163	.. SENSOR, PROX	1
17	SMS0000171	.. WHIZ BOLT	2
18	27663	.. CONNECTOR, CORD	1
19	236051	NUT, HEX (SS)	16
20	234129	CAPSCREW (SS)	16
21	235554	LOCKWASHER (SS)	16
22	254617	GUIDE RAIL	4
23	225871	TRIM	10
24	HAN0000817	HANDLE	2
26	228411	CAPSCREW (SS)	4
27	901651	BLOCK,STOP	2
28	228413	NUT, HEX (SS)	20
29	254106	WASHER, LOCK (SS)	20
30	901651	BLOCK,STOP	2
31	FD00007111	DECAL; FREEMAN	1
32	902502	PL, OUTER	2
33	902501	PL, INNER	2

\* 904071 CAN BE USED FOR OPTIONAL, 2ND PRODUCT  
SENSOR MOUNTED ON LEFT SIDE OF INFEED CHUTE

### JUNCTION BOX



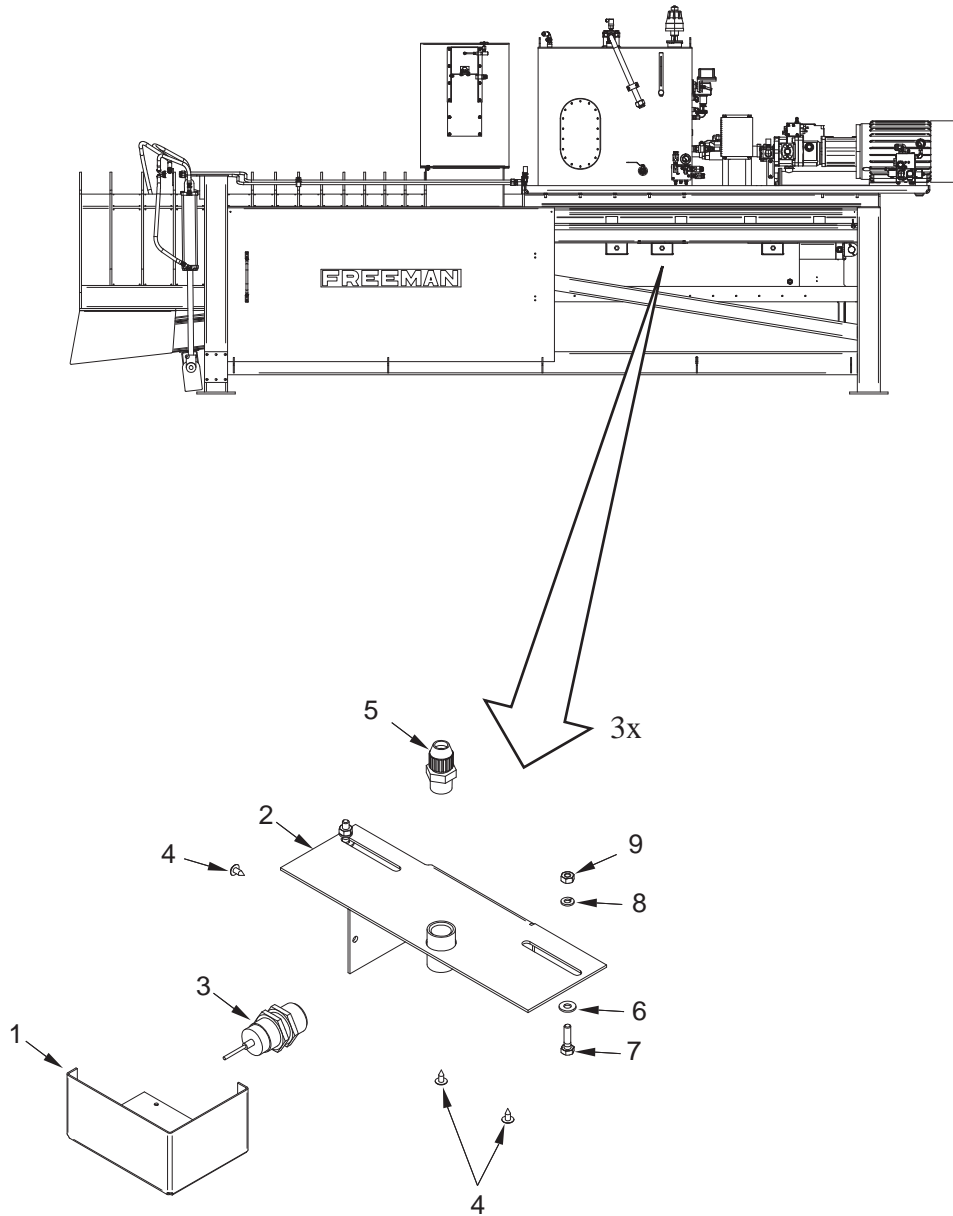


---

## JUNCTION BOX

REF NO.	PART NO.	DESCRIPTION	QTY. USED
	905503	JUNCTION BOX ASSY	1
1	903001	. ENCLOSURE	1
2	22623	. PANEL, BACK	1
4	22628	. RAIL	1
6	239317	. TERMINAL BLOCK	6
7	232237	. TERMINAL BLOCK	15
8	236926	. JUMPER, HORIZONTAL	12
9	232238	. PLATE, END	1
10	241761	. STOP	2
12	27663	. CONNECTOR	10
13	RNG0005262	. CONDUIT LOCKNUT	10
14	220582	. RING NUT	10
15	234130	CAPSCREW (SS)	4
16	GRM0005008	BUSHING GROMMET	4
17	234170	NUT, ESNA (SS)	4

# PLUNGER SENSORS

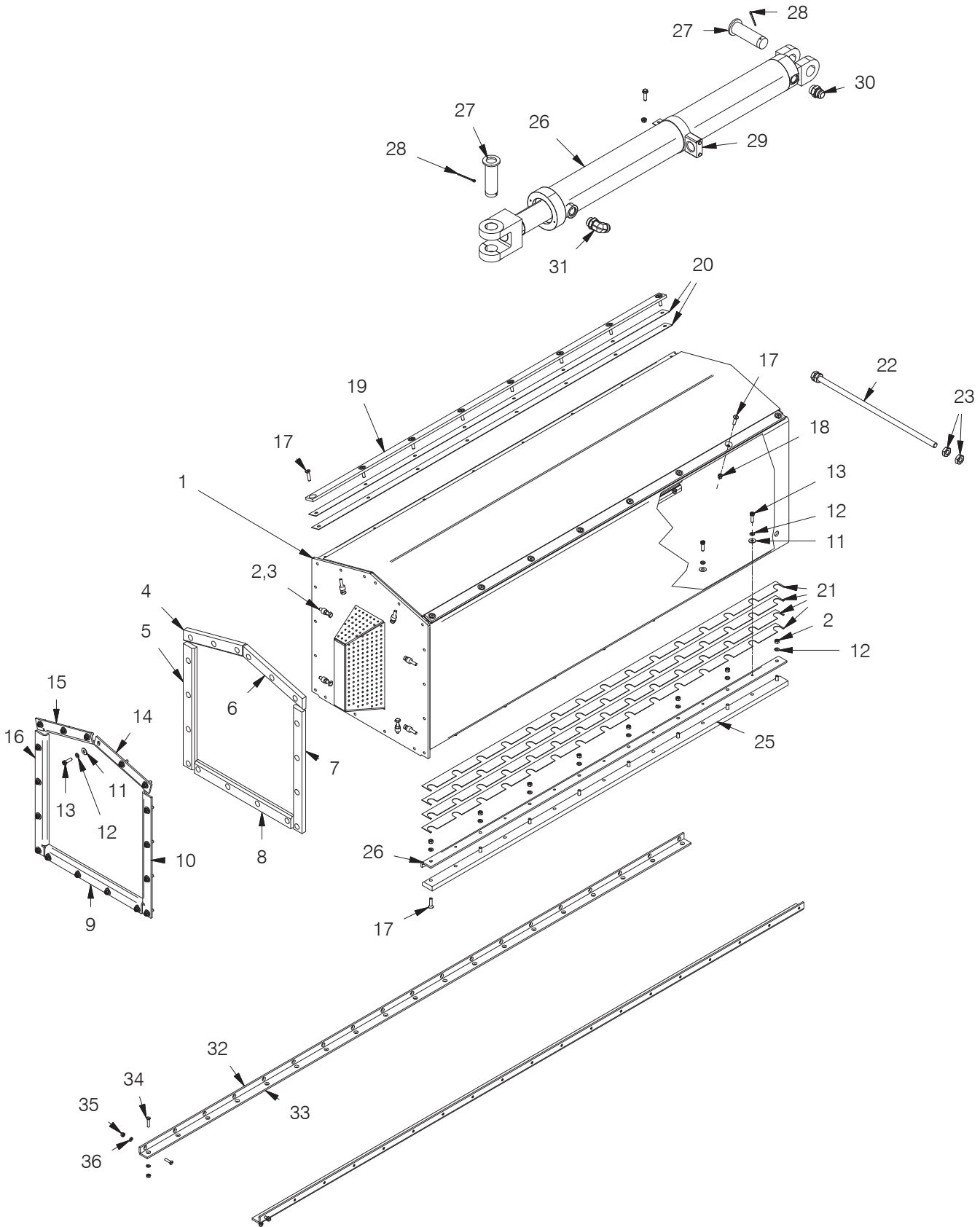


---

## PLUNGER SENSORS

REF NO.	PART NO.	DESCRIPTION	QTY. USED
1	MNT0024567	PL,COVER	3
2	902889	MOUNTING; PLUNGER SENSOR	3
3	244112	SWITCH, PROX	3
4	SMTS103250	SCREW (SS)	9
5	27663	CONNECTOR, CORD	3
6	234333	WASHER (SS)	6
7	228410	CAPSCREW (SS)	6
8	228412	WASHER, LOCK (SS)	6
9	228413	NUT, HEX (SS)	6

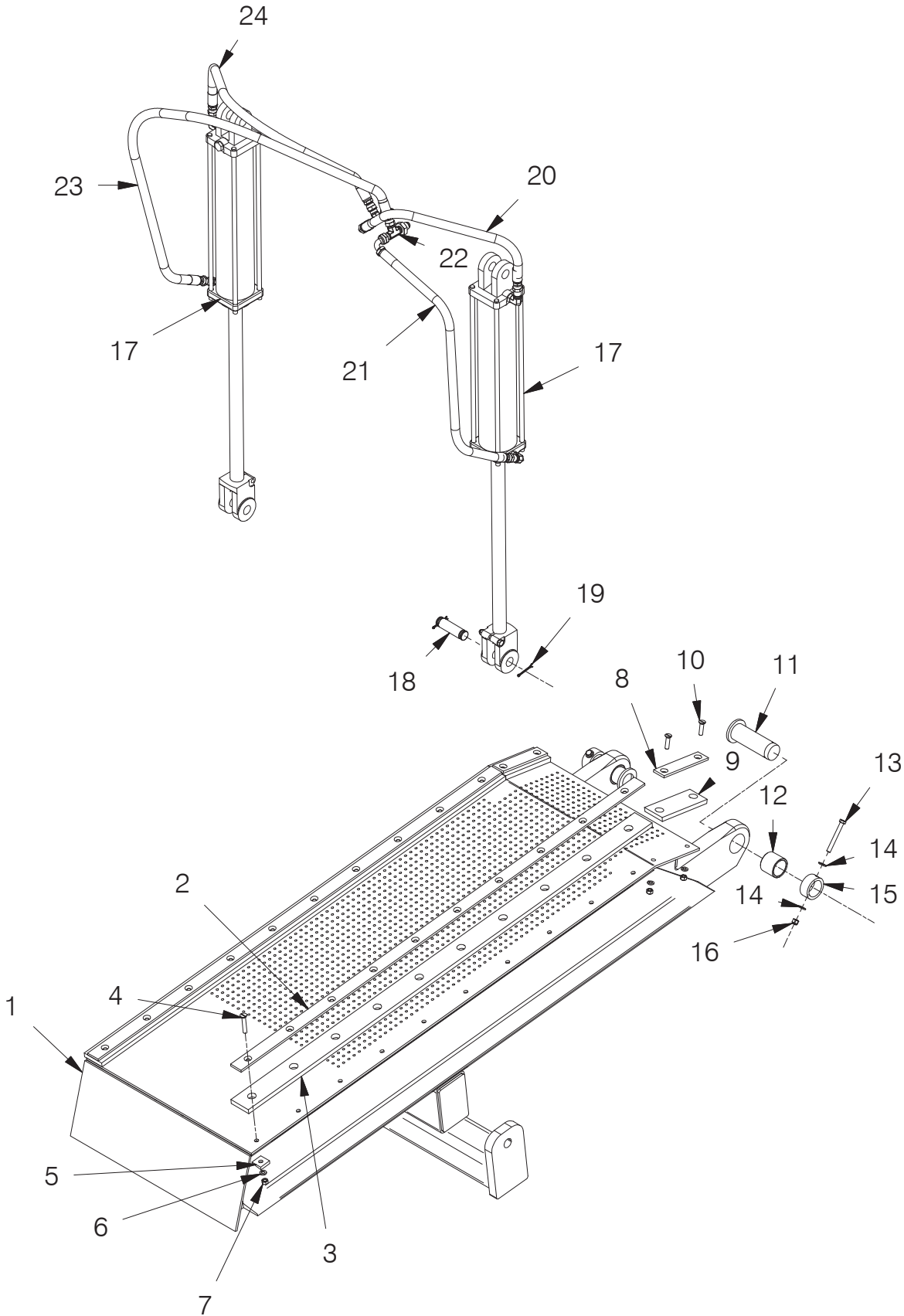
# PLUNGER



## PLUNGER

REF NO.	PART NO.	DESCRIPTION	QTY. USED	REF NO.	PART NO.	DESCRIPTION	QTY. USED
1	PLG0025503	PLUNGER FRAME	1	20	902892	SHIM	4
2	NCHS000375	HEX NUT (SS)	22	21	SHM0021922	SHIM	8
3	SQSS375200	SQ HEAD BOLT (SS)	8	22	ROD0024910	ROD	1
4	PLG2192700	PL, LH TOP	1	23	247008	NUT	4
5	PLG2192500	PL, LH	1	24	PLG0021920	PL, BTM	2
6	PLG2192701	PL, RH TOP	1	25	PLG0025903	PL, BACKUP	2
7	PLG2192501	PL, RH	1	26	253969	CYLINDER, MAIN	1
8	PLG0021923	BAR, BTM	1		256463	. SEAL KIT	1
9	PLG0021924	PL, BTM BACKUP	1	27	902209	. PIN, PLUNGER PIVOT	2
10	PLG2192601	PL, RH BACKUP	1	28	COT0000807	COTTER PIN	2
11	WCTS000375	FLAT WASHER (SS)	32	29	903355	CLAMP	1
12	WLKS000375	LOCK WASHER (SS)	48	30	209323	FITTING	1
13	SCCS000303	HEX BOLT (SS)	32	31	209715	FITTING	1
14	PLG2192801	PL RH TOP BACKUP	1	32	PLG0021918	BAR, BTM RAIL	2
15	PLG2192800	PL LH TOP BACKUP	1	33	PLG0021919	BAR, RAIL	2
16	PLG2192600	PL LH BACKUP	1	34	SMFS000204	FLAT HD BOLT (SS)	76
17	SMFS000304	FLAT HD BOLT (SS)	32	35	236051	HEX NUT (SS)	76
18	231851	NUT, ESNA (SS)	16	36	235554	LOCKWASHER (SS)	76
19	PLG0021900	PL, TOP	2				

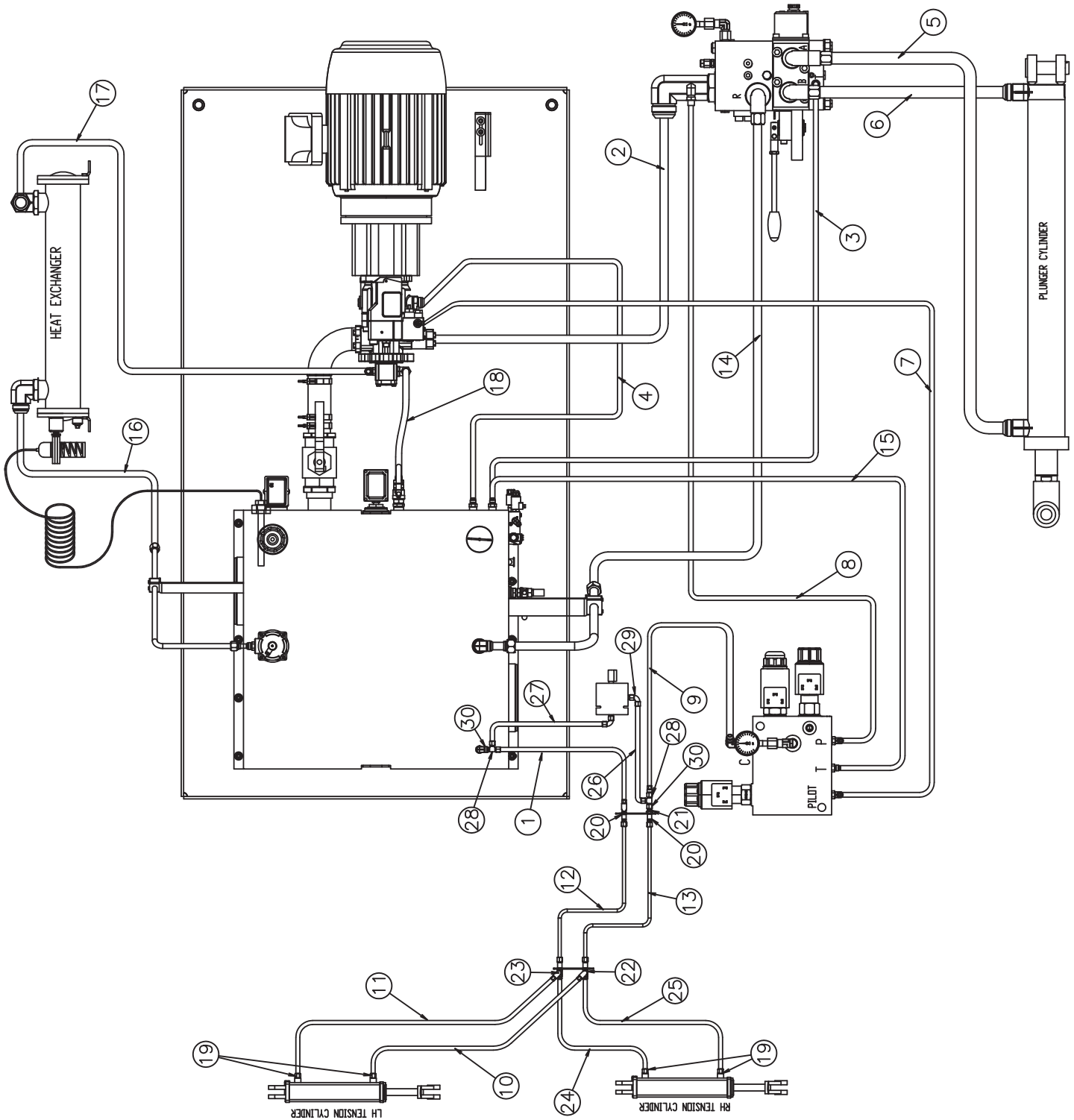
### RESTRICTOR RAIL



## RESTRICTOR RAIL

REF NO.	PART NO.	DESCRIPTION	QTY. USED	REF NO.	PART NO.	DESCRIPTION	QTY. USED
1	902172	RESTRICTOR RAIL	1	13	233465	CAPSCREW (SS)	2
2	RAL0021933	PL, BACKUP	2	14	231853	WASHER, FLAT (SS)	4
3	RAL0021932	PL, RAIL	2	15	903487	LOCK COLLAR (SS)	2
4	SMFS000308	FLAT HD BOLT (SS)	20	16	231851	ESNA NUT (SS)	2
5	WASS000143	BEVEL WASHER	20	17	CYL0009316	CYLINDER ASSY	2
6	WLKS000375	WASHER (SS)	24		SEL0009300	. SEAL KIT	2
7	NCHS000375	NUT (SS)	24	18	256506	CLEVIS PIN	4
8	RAL0021935	PL, BACKUP	2	19	256507	COTTER PIN	8
9	RAL0021934	BAR	2	20	HOS0025038	HOSE ASSY	1
10	SMFS000304	FLAT HD BOLT (SS)	4	21	253471	HOSE ASSY	1
11	903488	PIVOT PIN	2	22	R12579595	FITTING	2
12	901230	BUSHING	2	23	253465	HOSE ASSY	1
				24	HOS0032870	HOSE ASSY	1

# HOSES





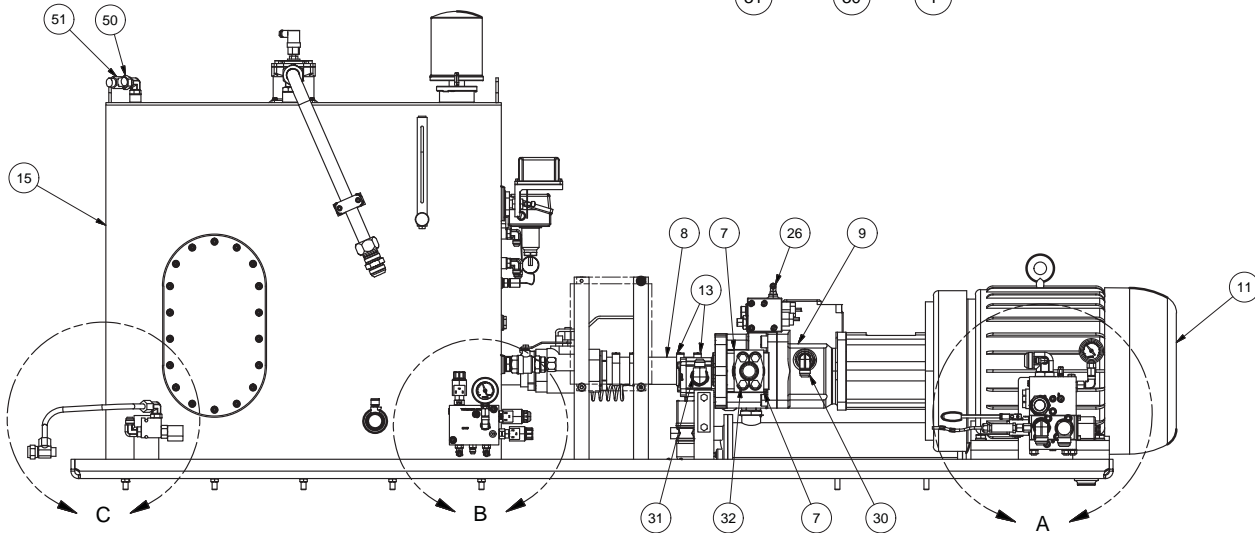
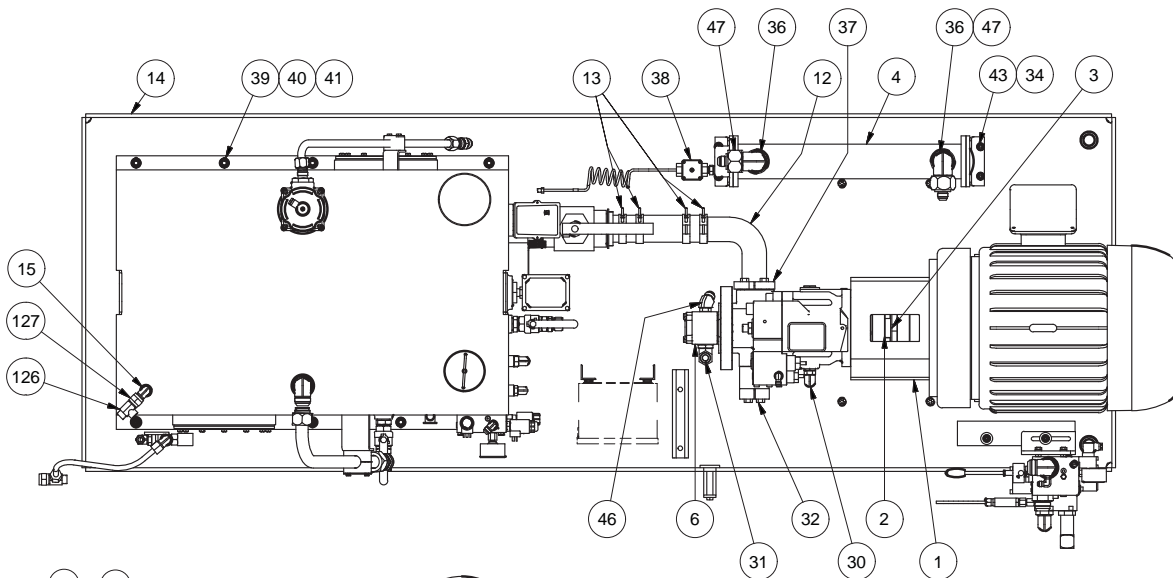
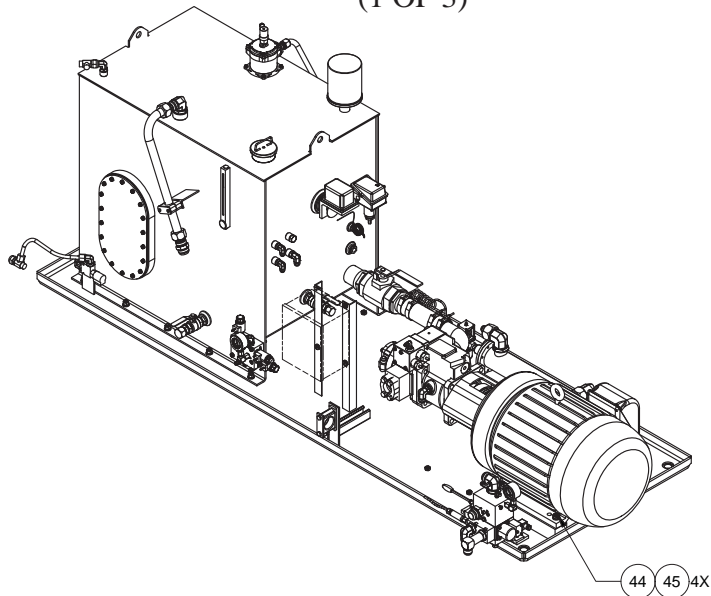
## HOSES

REF NO.	PART NO.	DESCRIPTION	QTY. USED	REF NO.	PART NO.	DESCRIPTION	QTY. USED
1	255381	HOSE ASSEMBLY	1	17	21570	HOSE ASSY	1
2	255382	HOSE ASSEMBLY	1	18	225141	HOSE ASSY	1
3	255383	HOSE ASSEMBLY	1	19	209488	FITTING	4
4	255384	HOSE ASSEMBLY	1	20	243248	FITTING	2
5	255385	HOSE ASSEMBLY	1	21	244093	FITTING	2
6	255386	TUBE ASSEMBLY	1	22	237203	FITTING	4
7	255387	HOSE ASSEMBLY	1	23	HYD5725050	FITTING	2
8	255388	HOSE ASSEMBLY	1	24	HOS0025038	HOSE ASSEMBLY	1
9	255389	HOSE ASSEMBLY	1	25	253471	HOSE ASSEMBLY	1
10	255463	HOSE ASSEMBLY	1	26	*	TUBE ASSEMBLY	1
11	255464	HOSE ASSEMBLY	1	27	*	HOSE ASSEMBLY	1
12	902237	TUBE ASSEMBLY	1	28	14793	FITTING	2
13	902238	TUBE ASSEMBLY	1	29	229384	FITTING	2
14	254228	HOSE ASSEMBLY	1	30	225830	FITTING	2
15	HOS0036662A	HOSE ASSEMBLY	1				
16	209172	HOSE ASSEMBLY	1				

\* PART NO. NOT AVAILABLE AT TIME OF PUBLICATION

# POWER UNIT (575 VAC MOTOR)

(1 OF 3)



## POWER UNIT (575 VAC MOTOR)

(2 OF 3)

REF NO.	PART NO.	DESCRIPTION	QTY. USED	REF NO.	PART NO.	DESCRIPTION	QTY. USED
	<b>905278</b>	<b>HPU Assembly</b>		31 **	12666	. Fitting	1
1	253971	. Adapter	1	32 **	229449	. Kit, Split Flange	1
2	253972	. Coupling	1		203446	. . O-Ring	1
3	253973	. Coupling	1		225328	. . Clamp Half	2
4	255722	. Heat Exchanger	1		230961	. . Capscrew	4
5 *	253976	. Hyd. Manifold	1	33	223427	. Flat Washer	8
6	253977	. Pump, Gear	1	34	234135	. Lockwasher	2
7 **	253978	. Check Valve	2	35	221707W	. Hex Nut	4
8 **	201440	. Suction Hose	1	36	209137	. Fitting	2
9 **	253981	. Pump	1	37	23390	. Kit, Split Flange	1
11 **	905277	. Motor	1		201621	. . Capscrew	4
12	254155	. Fitting	1		203523	. . O-Ring	1
13 **	225369	. T-Bolt Clamp	4		209539	. . Clamp Half	2
14	902452	. Drip Tray, HPU	1	38	255723	. Water Valve, Modulating	1
15 ***	903662	. Tank Assembly, Hydraulic	1	39	223634	. Flat Washer	10
16	255121	. Manifold, Control	1	40	234665	. Lockwasher	10
17	211560	. Fitting	1	41	221711W	. Hex Nut	10
18	R13801972	. Fitting	2	42	R13811043	. Capscrew	2
19	224298	. Fitting	1	43	162572W	. Capscrew	4
20	214203	. Gauge	1	44	Y17C-1028	. Capscrew	4
21	225648	. Snubber, Gauge	2	45	00103325	. Lockwasher	4
22	20856	. Fitting	2	46	209484	. Fitting	1
23	223638	. Fitting	2	47	234591	. Fitting	2
24	231135	. Gauge	1	50	22583	. Fitting	2
25	529950	. Fitting	1	51	14739	. Swivel T Fitting	2
26 **	11860	. Fitting	2	52	****	. Tube Assy	
27	209619	. Fitting	1	53	229384	. Fitting	2
28	15325	. Fitting	1	54	*****	. Manifold	1
29	209715	. Fitting	1	55	*****	. Fitting	1
30	213917	. Fitting	1	56	905545	. Poppet Valve	1

\* See Separate Coverage page 22

\*\* See Detailed View page 18

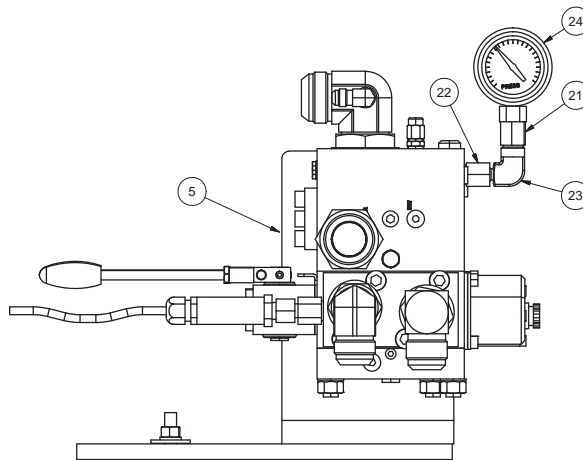
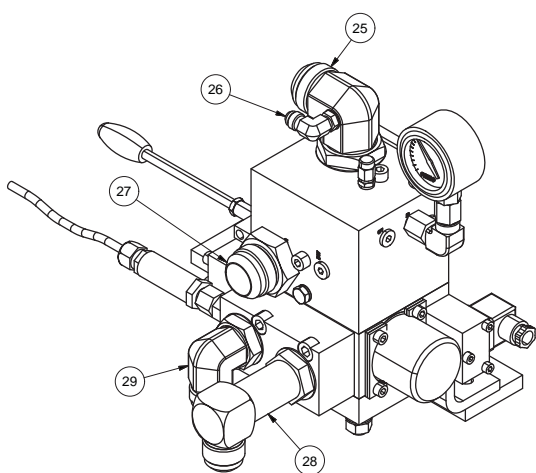
\*\*\* See Separate Coverage page 20

\*\*\*\* See Separate Coverage page 12

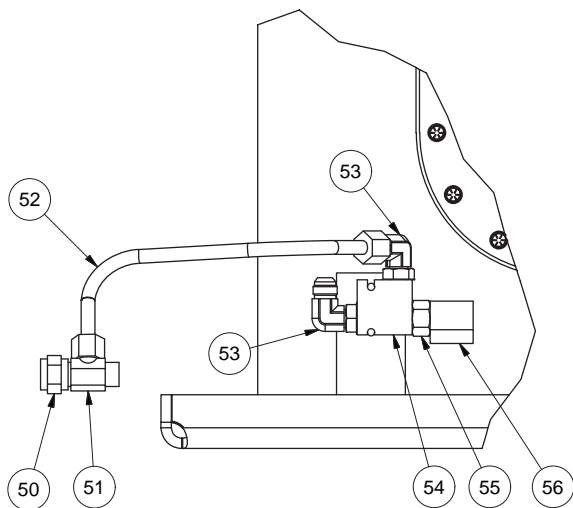
\*\*\*\*\* PART NO. NOT AVAILABLE AT TIME OF PUBLICATION

# POWER UNIT (575 VAC MOTOR)

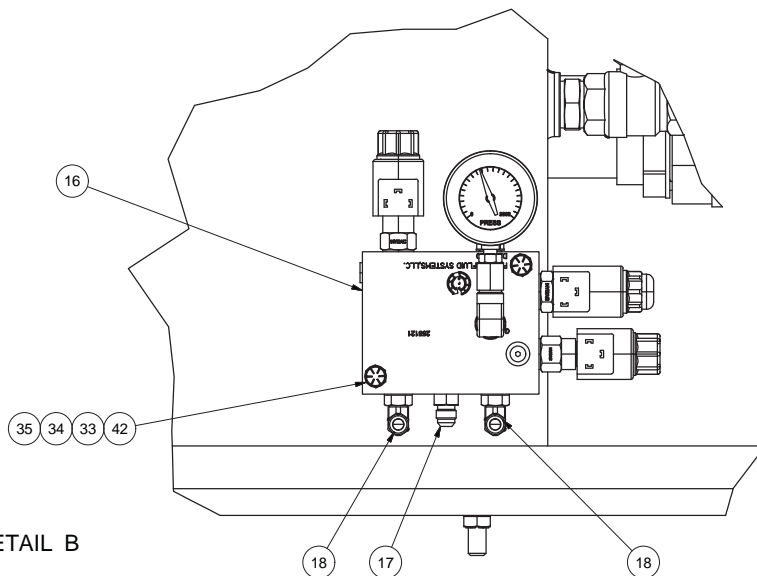
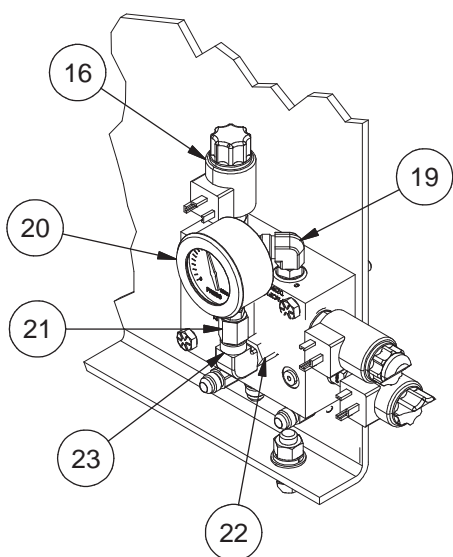
(3 OF 3)



DETAIL A



DETAIL C

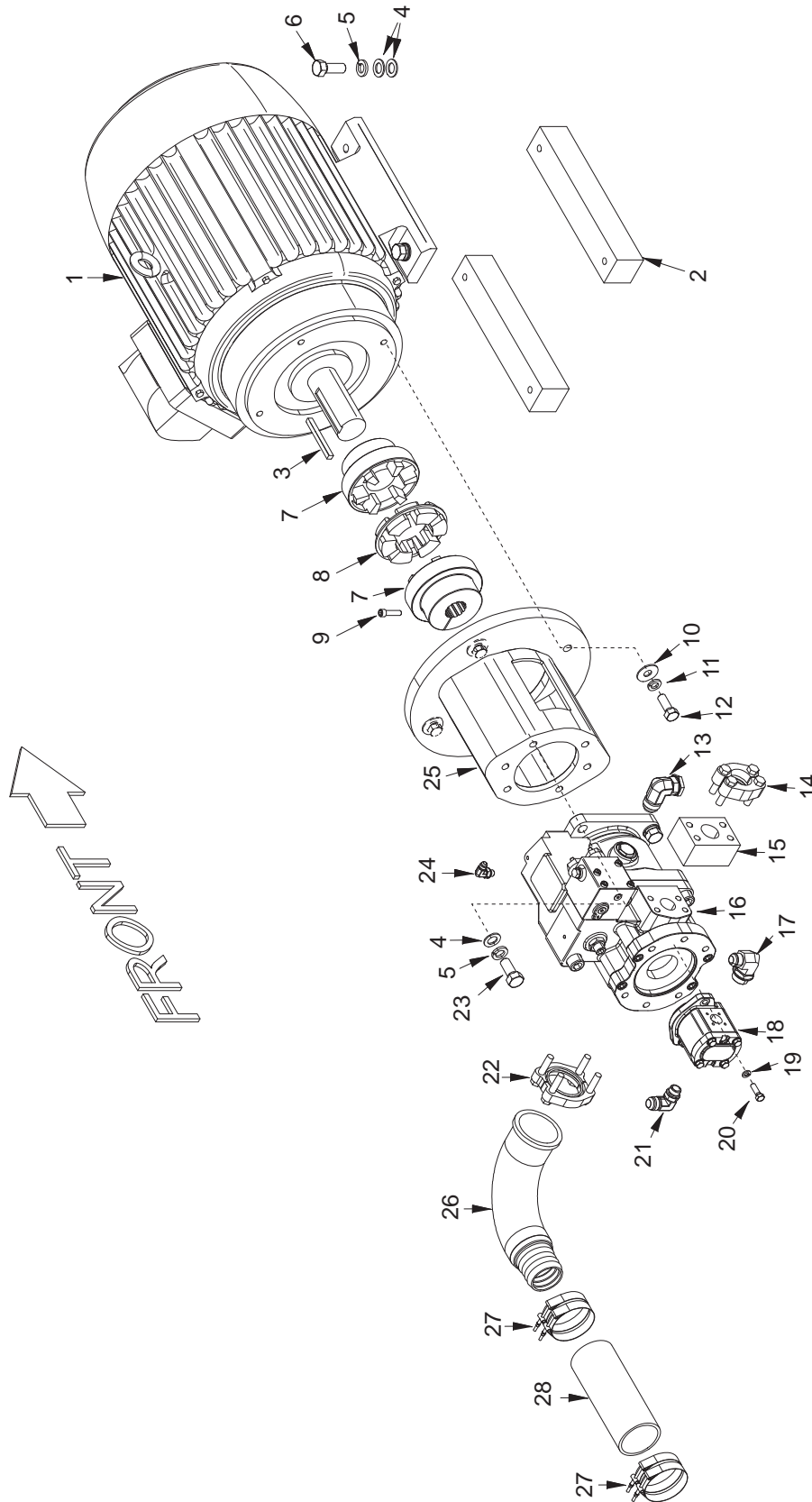


DETAIL B

---

INTENTIONALLY LEFT BLANK

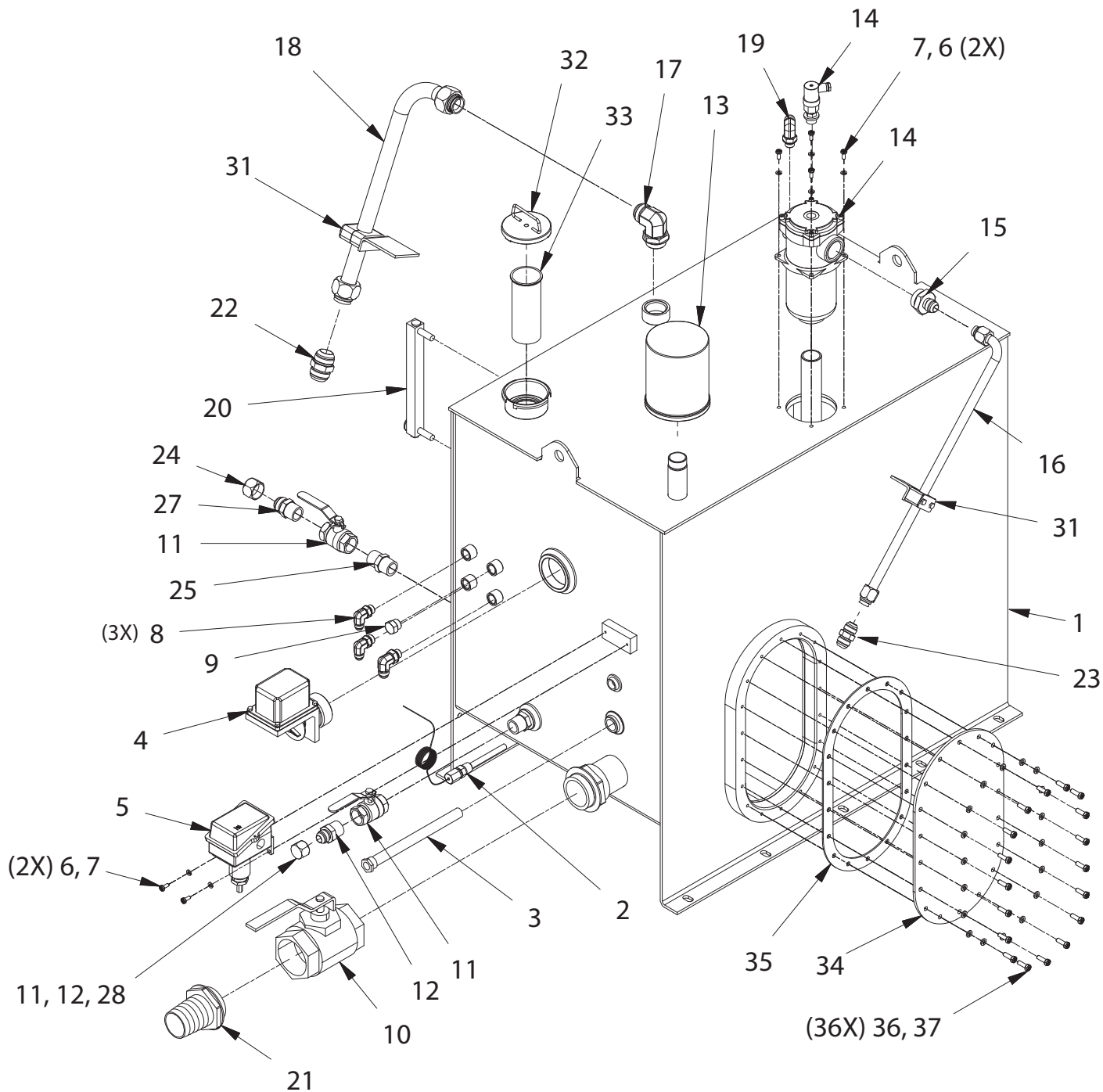
### MOTOR AND PUMP DETAIL



## MOTOR AND PUMP DETAIL

REF NO.	PART NO.	DESCRIPTION	QTY. USED	REF NO.	PART NO.	DESCRIPTION	QTY. USED
1	905277	MOTOR, ELEC, 40 HP, 575VAC, TEFC	1	16	253981	PUMP, PISTON	1
2	902911	MOTOR, MOUNT	2	17	12666	FITTING; EL	1
3	YSC6-3.00	KEY	1	18	253977	PUMP, GEAR	1
4	234173	WASHER, FLAT (SS)	12	19	WLKS000375	LOCKWASHER (SS)	2
5	241822	WASHER, LOCK (SS)	8	20	233465	CAPSCREW (SS)	2
6	234126	CAPSCREW (SS)	4	21	209490	FITTING; EL	1
7	253972	COUPLING, HALF	1	22	23390	KIT, SPLIT FLANGE	1
8	253973	INSERT	1		200604	. WASHER	2
9	R13811804	CAPSCREW	1		201621	. CAPSCREW	2
10	234172	WASHER, FLAT (SS)	4		203523	. O-RING	1
11	232510	WASHER, LOCKSPR (SS)	4		209539	. CLAMP HALF	2
12	238183	CAPSCREW (SS)	4	23	234550	CAPSCREW (SS)	4
13	213917	FITTING; EL	1	24	11860	FITTING; EL	1
14	229449	KIT, SPLIT FLANGE	1	25	253971	ADAPTER	1
	200604	. WASHER	4	26	254155	FITTING	1
	203446	. O-RING	1	27	225369	CLAMP, T-BOLT	4
	225328	. CLAMP HALF	2	28	201440	HOSE, SUCTION	1
	230961	. CAPSCREW	4				
15	253978	VALVE, CHECK	1				

# HYDRAULIC TANK ASSEMBLY

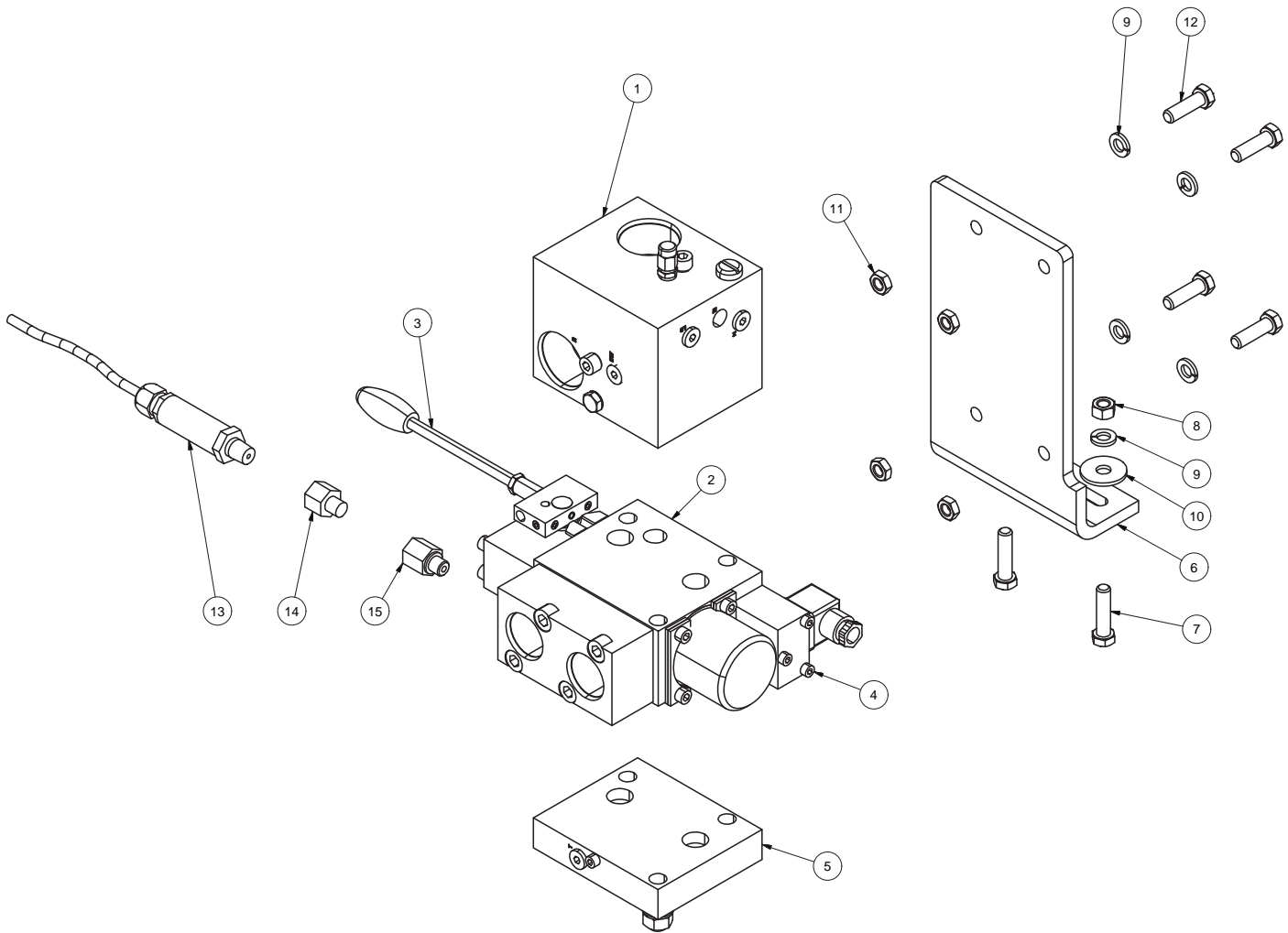




## HYDRAULIC TANK ASSEMBLY

REF NO.	PART NO.	DESCRIPTION	QTY. USED	REF NO.	PART NO.	DESCRIPTION	QTY. USED
	<b>903662</b>	<b>Tank Assembly,Hydraulic</b>		19	229384	. Fitting	1
1	902516	. Tank, Hydraulic	1	20	253675	. Gauge, Sight Level/Temp	1
2	254006	. Thermowell	1	21	253420	. Fitting	1
3	255724	. Thermowell	1	22	218923	. Ball Valve	1
4	SWI0059037	. Switch, Float	1	23	209759	. Fitting	1
5	253673	. Switch, Temp	1	24	209443	. Fitting	1
6	R13812512	. Lockwasher	6	25	209441	. Fitting	1
7	R13810990	. Capscrew	6	26	213114	. Fitting	1
8	209488	. Fitting	3	27	209077	. Fitting	1
9	215250	. Fitting	1	28	227384	. Fitting	1
	209207	. . O-Ring	1	29	21205	. Fitting	1
10	254007	. Ball Valve	1	30	902960	. Pipe	1
11	254010	. Ball Valve	1	31	247144	. Clamp	2
12	209533	. Fitting	1	32	R1917921	. Fill Cap	1
13	256179	. Element, Breather	1	33	R14310	. Strainer	1
14	254004	. Filter Assembly, Hydraulic Oil	1	34	902216	. Cover Plate	2
15	23408	. Fitting	1	35	578833	. Gasket	2
16	902279	. Tube Assembly	1	36	223655	. Capscrew	36
17	209714	. Fitting	1	37	223657	. Lockwasher	36
18	902993	. Tube Assembly	1				

# HYDRAULICS MANIFOLD

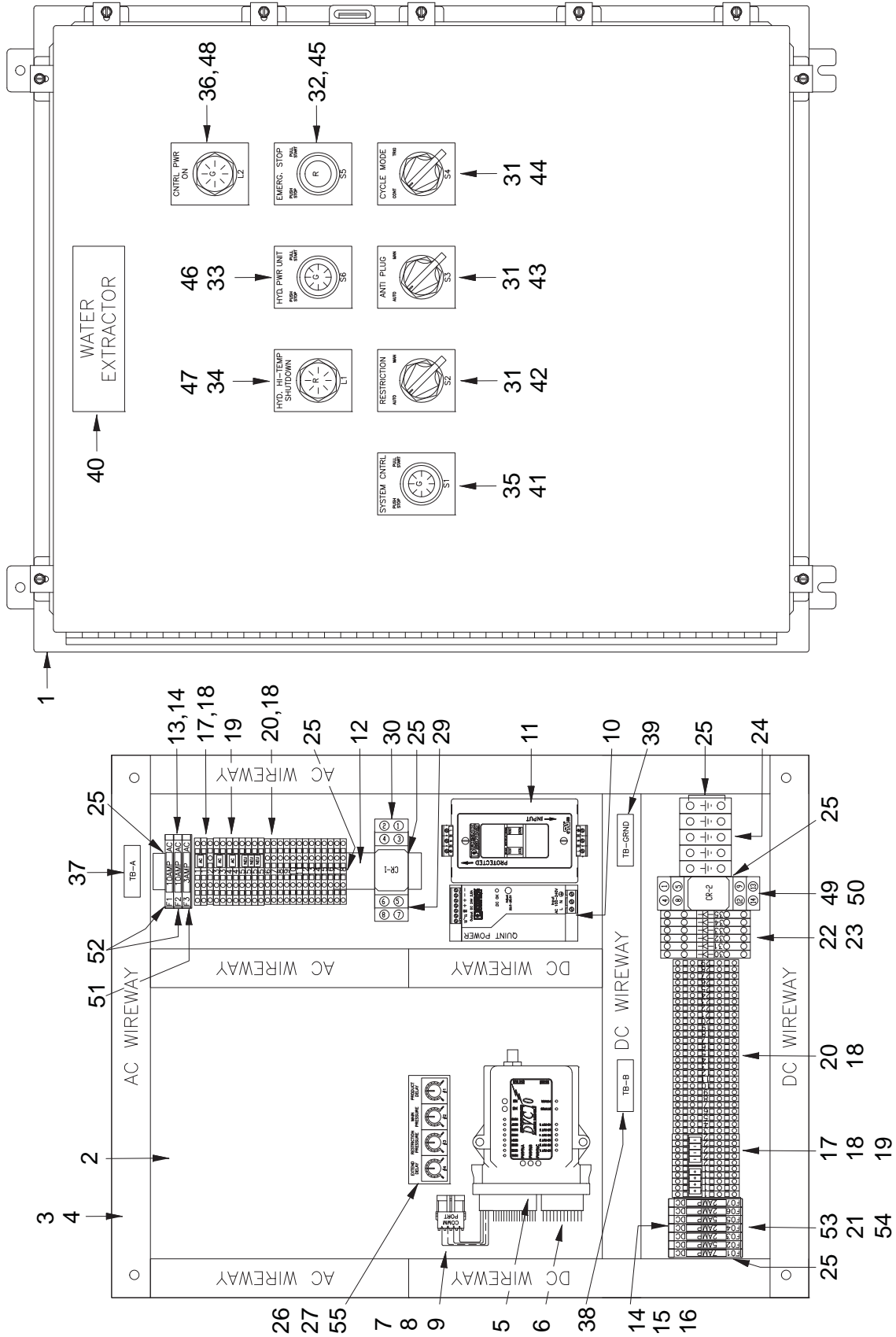


---

## HYDRAULICS MANIFOLD

REF NO.	PART NO.	DESCRIPTION	QTY. USED
	<b>253976</b>	<b>VALVE, DIRECTIONAL</b>	
1	256135	. CONN BLOCK	1
	250838	. . KIT, SEAL	1
2	256535	. WORK SECTION	1
	251816	. . KIT, SEAL	1
3	251917	. LEVER	1
4	256130	. COIL	1
5	256534	. PLATE, END	1
6	903007	BRACKET	1
7	233869	CAPSCREW (SS)	2
8	NCHS000375	HEX NUT (SS)	2
9	233569	WASHER, LOCK (SS)	4
10	231853	WASHER, FLAT (SS)	2
11	NCJS000500	NUT (SS)	4
12	233465	CAPSCREW (SS)	4
13	254535	PRESSURE TRANSDUCER	1
14	225648	SNUBBER	1
15	2310365	FITTING	1

# CONTROL BOX



## CONTROL BOX

REF NO.	PART NO.	DESCRIPTION	QTY. USED	REF NO.	PART NO.	DESCRIPTION	QTY. USED
	255181	CONTROL PANEL ASSEMBLY		29	256018	. RELAY	1
1	256185	. ENCLOSURE	1	30	256017	. RELAY SOCKET	1
2	256186	. BACK PANEL	1	31	256203	. 2 POS SEL SW MAINT	3
3	256187	. WIREWAY	2	32	256204	. EM STOP PUSH/PULL MAINT	1
4	256188	. WIREWAY COVER	2	33	256205	. START/STOP 120 VAC LIGHT	1
5	902245	. CONTROL MODULE, PROGRAMED	1	34	256206	. IND RED LIGHT 120VAC	1
6	252638	. KIT, CONNECTOR;A; DVC-10	1	35	256207	. START/STOP 24VDC LIGHT	1
7	2381551	. CONNECTOR, WIRE	1	36	256208	. IND GREEN LIGHT 120VDC	1
8	R7408664	. PIN, MALE	4	37	256210	. 1/2 X 2 TB-A	1
9	R740867	. SEAL, WIRE;	4	38	256211	. 1/2 X 2 TB-B	1
10	254146	. POWER SUPPLY	1	39	256212	. 1/2 X 2 GROUND	1
11	256209	. GFCI EM	1	40	256213	. 1/2 X 6.5 WATER EXTRACTOR	1
12	256189	. DIN RAIL	1	41	256214	. 3 X 2.5 SYSTEM CONTROL	1
13	248197	. COVER, END	3	42	256215	. 3 X 2.5 RESTRICTION	1
14	256190	. FUSE END PLATE	1	43	256216	. 3 X 2.5 ANTI PLUG	1
15	256191	. 24V FUSE BLOCK	7	44	256217	. 3 X 2.5 CYCLE MODE	1
16	256192	. 7 AMP FUSE	1	45	256218	. 3 X 2.5 EMERG. STOP	1
17	256193	. TERMINAL BLOCK	19	46	*	. 3 X 2.5 HYD. PWR UNIT	1
18	256194	. END PLATE	2	47	256220	. 3 X 2.5 HYD HI-TEMP SHUTDOWN	1
19	250697	. JUMPER	14	48	256221	. 3 X 2.5 CNTRL PWR ON	1
20	256195	. TERMINAL BLOCK	37	49	256020	. RELAY	1
21	256016	. 2 AMP FUSE	4	50	256019	. RELAY SOCKET	1
22	256196	. DIODE TERMINAL BLOCK	6	51	246933	. FUSE	2
23	256197	. END PLATE	1	52	243609	. FUSE	1
24	256198	. GROUNDING TB'S	7	53	243577	. FUSE	1
25	256199	. END STOP	7	54	246924	. FUSE	1
26	256200	. POTENTIOMETER	5	55	905487	. 6 HOLE POT MOUNTING BRACKET	1
27	256201	. POTENTIOMETER KNOB	5				

\* PART NO. NOT AVAILABLE AT TIME OF PUBLICATION

## INDEX

Part Number	Description	Page Number	Part Number	Description	Page Number
11860	FITTING; EL	14, 18	253972	COUPLING, HALF	14, 18
12666	FITTING; EL	14, 18	253973	Coupling	14, 18
14739	Swivel T Fitting	14	253976	VALVE, DIRECTIONAL	14, 22
14793	FITTING	12	253977	Pump, Gear	14, 18
15325	Fitting	14	253978	Check Valve	14, 18
20856	Fitting	14	253981	Pump	14, 18
21205	Fitting	20	254004	Filter Assembly, Hydraulic Oil	20
21570	HOSE ASSY	12	254006	Thermowell	20
22583	Fitting	14	254007	Ball Valve	20
22623	PANEL, BACK	4	254010	Ball Valve	20
22628	RAIL	4	254106	WASHER, LOCK (SS)	2
23390	Kit, Split Flange	14, 18	254146	POWER SUPPLY;	24
23408	Fitting	20	254155	Fitting	14, 18
27663	CONNECTOR	2, 4, 6	254163	SENSOR, PROX	2
201440	Suction Hose	14, 18	254228	HOSE ASSEMBLY	12
203446	O-Ring	14, 18	254535	PRESSURE TRANSDUCER	22
203523	O-RING	14, 18	254617	GUIDE RAIL	2
204389	SEAL	2	255121	Manifold, Control	14
209077	Fitting	20	255181	CONTROL PANEL ASSEMBLY	24
209137	Fitting	14	255381	HOSE ASSEMBLY	12
209172	HOSE ASSEMBLY	12	255382	HOSE ASSEMBLY	12
209207	O-Ring	20	255383	HOSE ASSEMBLY	12
209323	FITTING	8	255384	HOSE ASSEMBLY	12
209441	Fitting	20	255385	HOSE ASSEMBLY	12
209443	Fitting	20	255386	TUBE ASSEMBLY	12
209484	Fitting	14	255387	HOSE ASSEMBLY	12
209488	Fitting	12, 20	255388	HOSE ASSEMBLY	12
209490	FITTING; EL	18	255389	HOSE ASSEMBLY	12
209533	Fitting	20	255463	HOSE ASSEMBLY	12
209539	Clamp Half	14, 18	255464	HOSE ASSEMBLY	12
209619	Fitting	14	255722	Heat Exchanger	14
209714	Fitting	20	255723	Water Valve, Modulating	14
209715	Fitting	8, 14	255724	Thermowell	20
209759	Fitting	20	256016	2 AMP FUSE	24
211560	Fitting	14	256017	RELAY SOCKET	24
213114	Fitting	20	256018	RELAY	24
213917	Fitting	14, 18	256019	RELAY SOCKET	24
214203	Gauge	14	256020	RELAY	24
215250	Fitting	20	256130	COIL	22
218923	Ball Valve	20	256135	CONN BLOCK	22
223638	Fitting	14	256179	Element, Breather	20
224298	Fitting	14	256185	ENCLOSURE	24
225141	HOSE ASSY	12	256186	BACK PANEL	24
225328	Clamp Half	14, 18	256187	WIREWAY	24
225369	T-Bolt Clamp	14, 18	256188	WIREWAY COVER	24
225648	SNUBBER	14, 22	256189	DIN RAIL	24
225830	FITTING	12	256190	FUSE END PLATE	24
225871	TRIM	2	256191	24V FUSE BLOCK	24
227384	Fitting	12, 14, 20	256192	7 AMP FUSE	24
229449	Kit, Split Flange	14, 18	256193	TERMINAL BLOCK	24
231135	Gauge	14	256194	END PLATE	24
232237	TERMINAL BLOCK	4	256195	TERMINAL BLOCK	24
234591	Fitting	14	256196	DIODE TERMINAL BLOCK	24
248197	COVER, END	24	256197	END PLATE	24
250697	JUMPER	24	256198	GROUNDING TB'S	24
250838	KIT, SEAL	22	256199	END STOP	24
251816	KIT, SEAL	22	256200	POTENTIOMETER 5W, 10K OHM	24
251917	LEVER	22	256201	POTENTIOMETER KNOB	24
252638	KIT, CONNECTOR;A; DVC-10	24	256203	2 POS SEL SW MAINT	24
253420	Fitting	20	256204	EM STOP PUSH/PULL MAINT	24
253465	HOSE ASSY	10	256205	START/STOP 120 VAC LIGHT	24
253471	HOSE ASSY	10, 12	256206	IND RED LIGHT 120VAC	24
253673	Switch, Temp	20	256207	START/STOP 24VDC LIGHT	24
253675	Gauge, Sight Level/Temp	20	256208	IND GREEN LIGHT 120VDC	24
253969	CYLINDER, MAIN	8	256209	GFCI EM	24
253971	Adapter	14, 18	256210	1/2 X 2 TB-A	24

## INDEX

Part Number	Description	Page Number	Part Number	Description	Page Number
256211	1/2 X 2 TB-B . . . . .	24	HOS0025038	HOSE ASSEMBLY . . . . .	10, 12
256212	1/2 X 2 GROUND . . . . .	24	HOS0032870	HOSE ASSY . . . . .	10
256213	1/2 X 65 WATER EXTRACTOR . . . . .	24	HOS0036662A	HOSE ASSEMBLY . . . . .	12
256214	3 X 25 SYSTEM CONTROL . . . . .	24	HYD5725050	FITTING . . . . .	12
256215	3 X 25 RESTRICTION . . . . .	24	MNT0024567	PL, COVER . . . . .	6
256216	3 X 25 ANTI PLUG . . . . .	24	PLG0021900	PL, TOP . . . . .	8
256217	3 X 25 CYCLE MODE . . . . .	24	PLG0021918	BAR, BTM RAIL . . . . .	8
256218	3 X 25 EMERGSTOP . . . . .	24	PLG0021919	BAR, RAIL . . . . .	8
256220	3 X 25 HYD HI-TEMP SHUTDOWN . . . . .	24	PLG0021920	PL, BTM . . . . .	8
256221	3 X 25 CNTRL PWR ON . . . . .	24	PLG0021923	BAR, BTM . . . . .	8
256463	SEAL KIT . . . . .	8	PLG0021924	PL, BTM BACKUP . . . . .	8
256506	CLEVIS PIN . . . . .	10	PLG0025503	PLUNGER FRAME . . . . .	8
256507	COTTER PIN . . . . .	10	PLG0025903	PL, BACKUP . . . . .	8
256534	PLATE, END . . . . .	22	PLG2192500	PL, LH . . . . .	8
256535	WORK SECTION . . . . .	22	PLG2192501	PL, RH . . . . .	8
529950	Fitting . . . . .	14	PLG2192600	PL LH BACKUP . . . . .	8
578833	Gasket . . . . .	20	PLG2192601	PL, RH BACKUP . . . . .	8
901230	BUSHING . . . . .	10	PLG2192700	PL, LH TOP . . . . .	8
901651	BLOCK, STOP . . . . .	2	PLG2192701	PL, RH TOP . . . . .	8
902139	CHUTE, INFEED . . . . .	2	PLG2192800	PL LH TOP BACKUP . . . . .	8
902172	RESTRICTOR RAIL . . . . .	10	PLG2192801	PL RH TOP BACKUP . . . . .	8
902209	PIN, PLUNGER PIVOT . . . . .	8	R12579595	FITTING . . . . .	10
902216	Cover Plate . . . . .	20	R13801972	Fitting . . . . .	14
902237	TUBE ASSEMBLY . . . . .	12	R14310	Strainer . . . . .	20
902238	TUBE ASSEMBLY . . . . .	12	R1917921	Fill Cap . . . . .	20
902245	CONTROL MODULE, PROGRAMED . . . . .	24	R7408664	PIN, MALE . . . . .	24
902279	Tube Assembly . . . . .	20	R740867	SEAL, WIRE; . . . . .	24
902452	Drip Tray, HPU . . . . .	14	RAL0021932	PL, RAIL . . . . .	10
902468	FRAME ASSY, MAIN . . . . .	2	RAL0021933	PL, BACKUP . . . . .	10
902501	PL, INNER . . . . .	2	RAL0021934	BAR . . . . .	10
902502	PL, OUTER . . . . .	2	RAL0021935	PL, BACKUP . . . . .	10
902516	Tank, Hydraulic . . . . .	20	RNG0005262	RING NUT . . . . .	4
902889	MOUNTING; PLUNGER SENSOR . . . . .	6	ROD0024910	ROD . . . . .	8
902892	SHIM . . . . .	8	SEL0009300	SEAL KIT . . . . .	10
902911	MOTOR, MOUNT . . . . .	18	SHM0021922	SHIM . . . . .	8
902960	Pipe . . . . .	20	SWI0059037	Switch, Float . . . . .	20
902993	Tube Assembly . . . . .	20	TBE0261300	TUBE . . . . .	2
903000	JUNCTION BOX ASSY . . . . .	4	VLV0000400	NEEDLE VALVE . . . . .	2
903001	BOX . . . . .	4	VLV0026113	AIR VALVE . . . . .	2
903007	BRACKET . . . . .	22	WND0024498	WINDOW . . . . .	2
903355	CLAMP . . . . .	8	YSC6-300	KEY . . . . .	18
903487	LOCK COLLAR (SS) . . . . .	10			
903488	PIVOT PIN . . . . .	10			
903662	Tank Assembly, Hydraulic . . . . .	14, 20			
904071	CHUTE SENSOR ASSY . . . . .	2			
905277	MOTOR, ELEC, 40 HP, 575VAC, TEFC . . . . .	14, 18			
905278	HPU Assembly . . . . .	14			
905487	6 HOLE POT MOUNTING BRACKET . . . . .	24			
905545	Poppet Valve . . . . .	14			
2310365	FITTING . . . . .	22			
2381551	CONNECTOR, WIRE . . . . .	24			
9416918	NUT, FLGD . . . . .	2			
*	TUBE ASSEMBLY . . . . .	12			
*	HOSE ASSEMBLY . . . . .	12			
*	3 X 25 HYDPWR UNIT . . . . .	24			
*	Tube Assy . . . . .	14			
*	Manifold . . . . .	14			
*	Fitting . . . . .	14			
BKT0023959	BRACKET . . . . .	2			
BKT0026116	BRACKET, SENSOR MTG . . . . .	2			
BSH0026123	FITTING . . . . .	2			
COT0000807	COTTER PIN . . . . .	8			
CYL0009316	CYLINDER ASSY . . . . .	10			
FD00007111	DECAL; FREEMAN . . . . .	2			
GRM0005008	BUSHING GROMMET . . . . .	4			
HAN0000817	HANDLE . . . . .	2			

\* PART NO. NOT AVAILABLE AT TIME OF PUBLICATION



To find a dealer in your area,  
Call: 503-625-2560,  
Fax: 503-625-7269, or

Visit our website: <http://www.alliedsystems.com>

**Allied Systems**  
COMPANY

PB000WE411  
Printed in USA