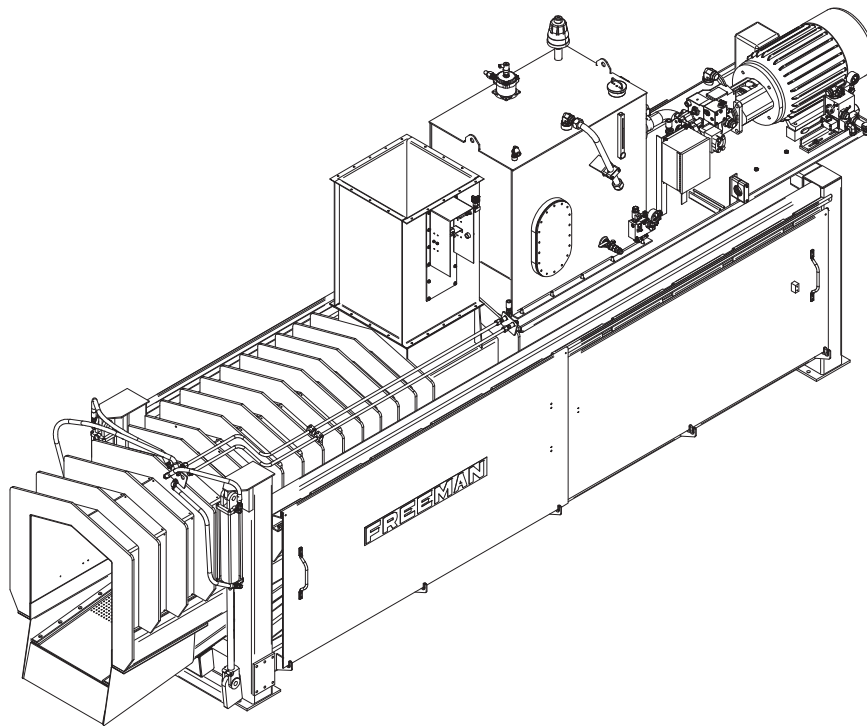


FREEMAN

A Division of Allied Systems Company

MODEL WE-4 WATER EXTRACTOR



2008 PARTS LIST

SAFETY PRECAUTIONS

“THE BEST SAFETY DEVICE IS A CAREFUL OPERATOR”

Do not clean, lubricate, or make any adjustments on the equipment while it is in operation.

Do not start the equipment until you are certain everyone is clear of the machine and have ensured there are no tools on the unit.

Do not work around equipment in loose clothing.

Do not attempt to service any equipment while the motor is running.

Inspection Covers and Safety Shields should only be removed by authorized service persons.

After servicing do not place the equipment back into operation until all Safety Shields and Devices have been replaced. Operation without Safety Shields and Devices can place the operator into a hazardous situation.

Do not open or work on the In-Feed System until the flow of material has been stopped and the Water Extractor Motor has been turned off.

Do not make any adjustments or reach under any load bearing surfaces while they are loaded.

INSTRUCT ALL OPERATORS ON SAFETY PRECAUTIONS.



WARNING: SOME ILLUSTRATIONS IN THIS PARTS LIST SHOW THE BALER WITHOUT SHIELDS TO ALLOW FOR A BETTER VIEW OF THE AREA BEING ADDRESSED. THE BALER SHOULD NEVER BE OPERATED WITH ANY OF THE SAFETY SHIELDS REMOVED.

INTRODUCTION

HOW TO USE THE MANUAL

This manual contains illustrations and parts lists of components and assemblies which make up the machine. Each page consists of the name of the assembly or component, a reference number, part number, part name and the quantities of the part used.

Assembly or component names help identify the illustration and parts list for each figure. This name also helps locate the general area of the machine where the assembly or component can be located.

Reference numbers shown in a column refers to the numbered parts in the illustration. This ties the part in the illustration to the part number and description in the parts list. Part numbers are used to identify individual parts or part assemblies

Part descriptions provide the name of the part, plus additional information such as dimensional specification and what parts are grouped together to form part assemblies, which helps you identify the parts.

Quantities listed for each illustration are only for that assembly or component and not the total used per machine.

Indent dots are used to indicate assemblies and sub-parts of assemblies. No dot indicates the major assembly. Part descriptions which are indented with dots are sub-parts of the major assembly shown above.

This parts manual is not intended to be a complete guide for machine service or repairs. Contact your dealer for any of your service or technical requirements.

UPDATING AND REORDERING MANUALS

The parts lists, illustrations and specifications in this manual are based on the latest information available at the time of publication. Your machine may have product improvement and options not yet contained in this manual.

A copy of this manual is supplied with each machine. Additional copies are available through you dealer. When ordering additional manuals, use the reorder number listed on the front cover and the quantity needed.

SERIAL NUMBER LOCATION AND BALER IDENTIFICATION

Each Freeman Baler is identified by means of a baler model number and baler serial number. As a further identification, all power units are provided with a serial number.

To ensure prompt, efficient service when ordering parts or requesting repairs from your authorized Freeman dealer, record the serial numbers in the spaces provided.

WATER EXTRACTOR SERIAL NUMBER _____

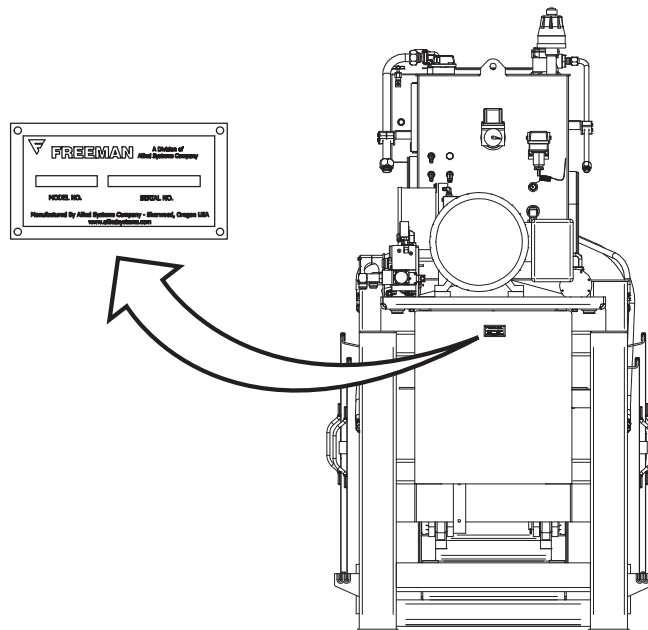
Front of baler frame under oil cooler.

POWER UNIT SERIAL NUMBER _____

Electric Motor- _____

Left side, near connection box.

NOTE: The motor and pump end is considered the front of the baler. The sides are described as left-hand side and right-hand side as viewed from behind while facing the discharge end of the Water Extractor.

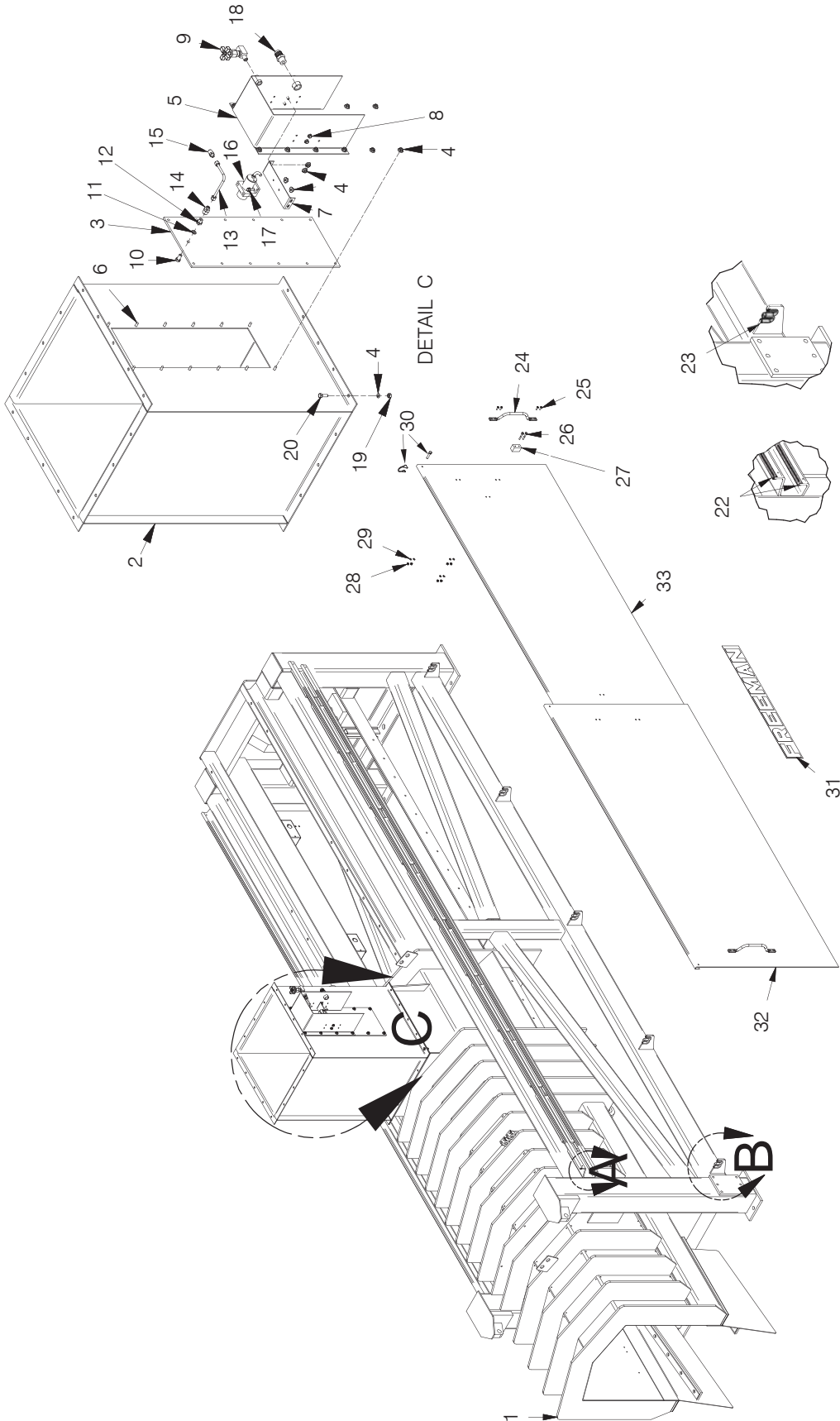


Starting with ASC-0WE4-464

Table of Contents

Control Box	19
Frame.....	1
Hoses.....	11
Hydraulics Manifold	17
In-Feed Chute.....	1
Junction Box.....	3
Motor And Pump.....	15
Plunger	7
Plunger Sensors	5
Power Unit.....	13
Restrictor Rail.....	9

FRAME

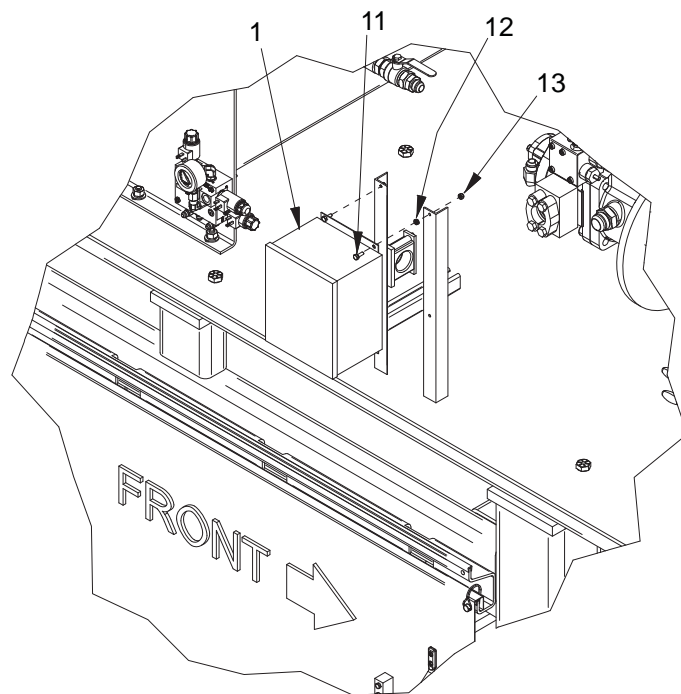
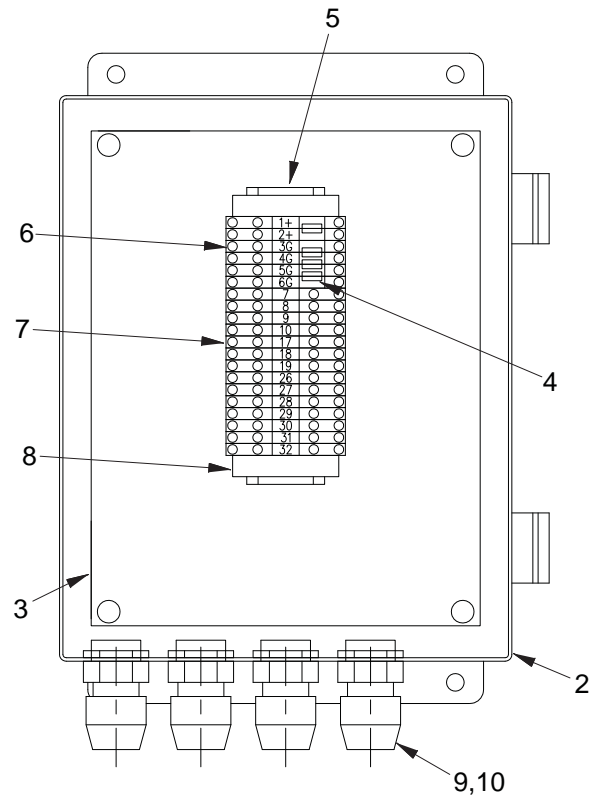


DETAIL A DETAIL B

FRAME

REF NO.	PART NO.	DESCRIPTION	QTY. USED
1	902468	FRAME ASSY,MAIN WE5	1
2	900923	CHUTE ASSY,INFEED;*B; WE4B	1
2	902139	. CHUTE WLDMT,INFEED;*C; WE4B	1
3	WND0024498	. WINDOW	1
4	09416918	. NUT, SERRATED; 1/4 NC GR5 FLGD	12
5	BKT0026116	. BRACKET,SENSOR MTG; WE4/WE5	1
6	SMTS001001	. MS; 1/4 NC X 3/4 TRUS HD (SS)	12
7	BKT0023959	. BRACKET,	1
8	SMS0000173	. BOLT, WHIZ; 1/4 NC X 1/2 (SS)	4
9	VLV0000400	. 1/4 NEEDLE VALVE F/ WE4A	1
10	VLV0026113	. AIR VALVE	1
11	204389	. SEAL	1
12	BSH0026123	. FITTING	1
13	TBE0261300	. 1/4 FEMALE CONNECTOR	1
14	HYD6600404	. . 1/4 MALE CONNECTOR	1
15	F000008221	. . CONNECTOR; 1/4 MALE (COPPER)	1
16	254163	. SENSOR, PROX	1
17	SMS0000171	. WHIZ BOLT 1/4 X 5/8 NC -PLATED	2
18	27663	CONNECTOR, CORD	1
19	236051	NUT, HEX; 5/16 NC (SS)	16
20	234129	CAPSCREW; 5/16 NC X 1 (SS)	16
21	235554	5/16" LOCKWASHER - SS	16
22	254617	GUIDE RAIL;A; 1/2 X 1/2 X 1/4 UHMW	4
23	225871	TRIM, EDGE	10
24	HAN0000817	HANDLE, GRAB	2
25	SMTS001001	MS 1/4 NC X 3/4 TRUSS HD (SS)	16
26	228411	CAPSCREW; 1/4 NC X 1 3/4 (SS)	4
27	901651	BLOCK,STOP	2
28	228413	NUT, HEX; 1/4 NC (SS)	20
29	254106	WASHER, LOCK; 1/4-SS	20
30	901651	BLOCK,STOP	2
31	FD00007111	DECAL; FREEMAN (25" X 4" WHITE)	1
32	902502	PL, OUTER	2
33	902501	PL, INNER	2

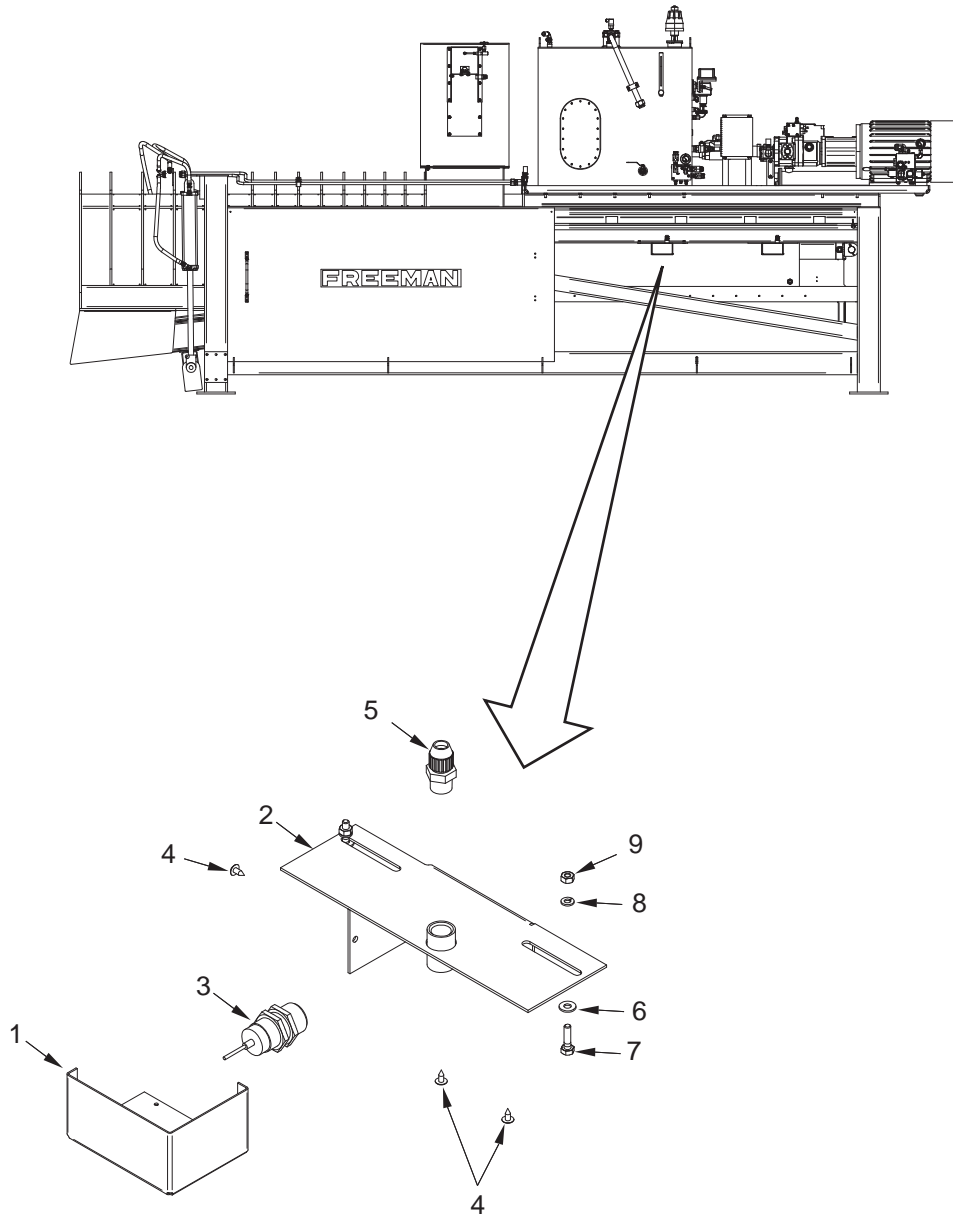
JUNCTION BOX



JUNCTION BOX

REF NO.	PART NO.	DESCRIPTION	QTY. USED
1	903000	JUNCTION BOX ASSY; WE4B/WE5A	1
2	903001	BOX	1
3	22623	PANEL, BACK	1
4	236926	JUMPER, HORIZONTAL	12
5	22628	RAIL	.133
6	239317	TERMINAL BLOCK 280-646	6
7	232237	TERMINAL BLOCK 280-641	14
8	241761	STOP, END 249-117	2
9	27663	CONNECTOR, CORD	10
10	27054	RING NUT	10
11	234130	CAPSCREW; 1/4 NC X 3/4 (SS)	4
12	GRM0005008	1/2" STD SNAP BUSHING GROMMET	4
13	234170	NUT, ESNA; 1/4 NC (SS)	4

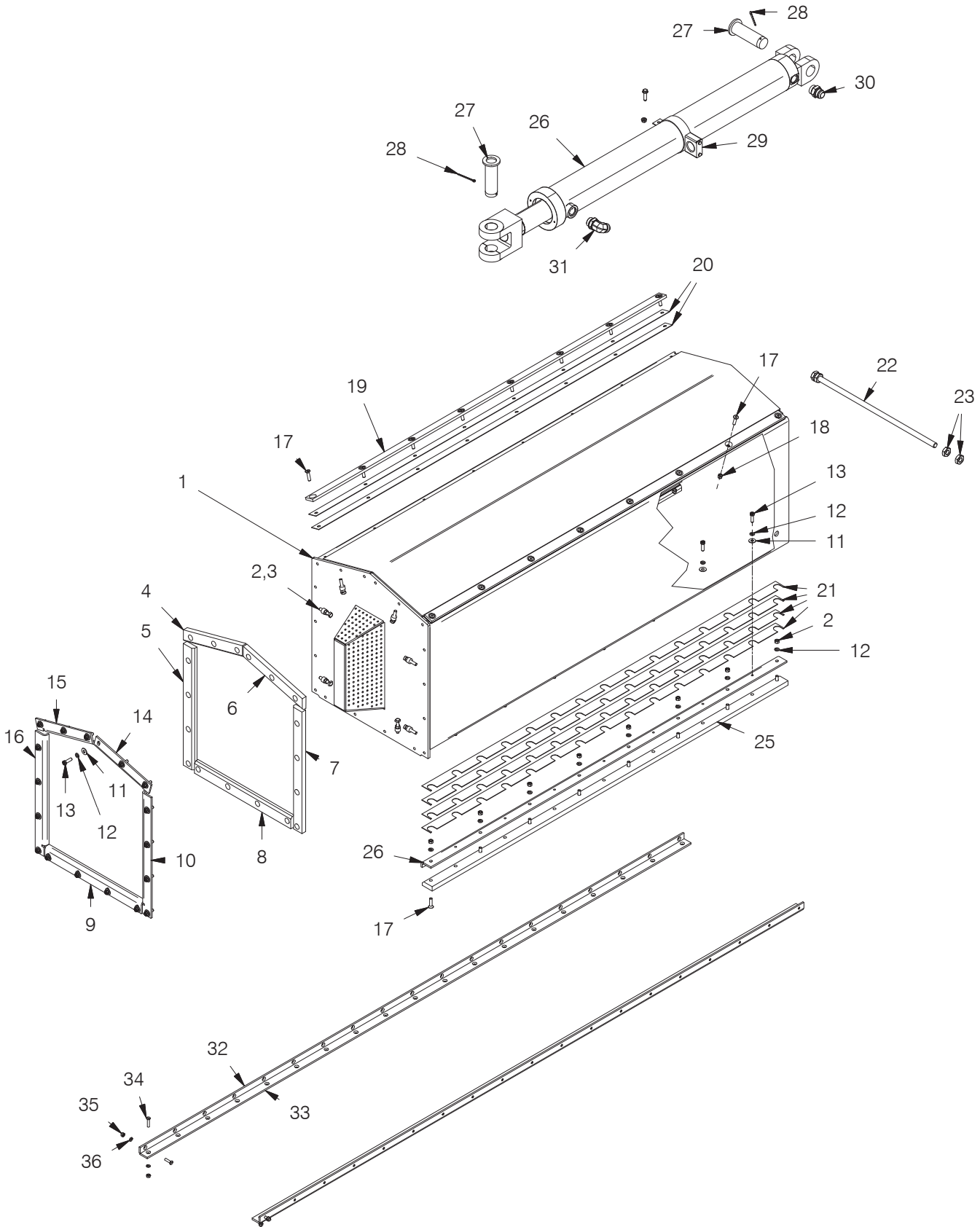
PLUNGER SENSORS



PLUNGER SENSORS

REF NO.	PART NO.	DESCRIPTION	QTY. USED
1	MNT0024567	PL,COVER	2
2	902889	MOUNTING; PLUNGER SENSOR	2
3	244112	SWITCH, PROX	2
4	SMTS103250	10-32 X 1/2 TH MACH SCREW (SS)	6
5	27663	CONNECTOR, CORD	2
6	234333	WASHER, FLAT; 1/4 (SS)	4
7	228410	CAPSCREW; 1/4 NC X 1 (SS)	4
8	228412	WASHER, LOCK; 1/4 REG SPR (SS)	4
9	228413	NUT, HEX; 1/4 NC (SS)	4

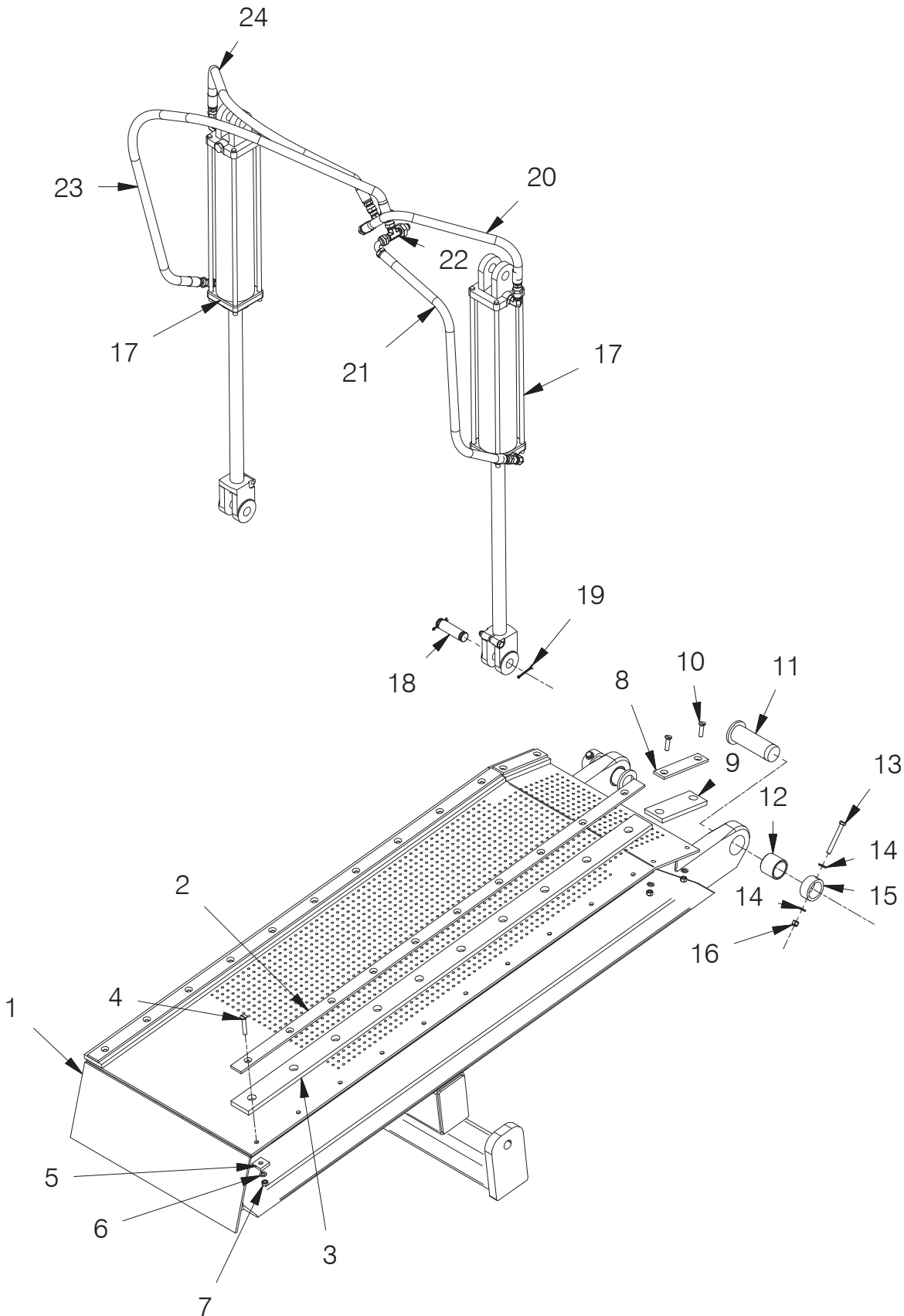
PLUNGER



PLUNGER

REF NO.	PART NO.	DESCRIPTION	QTY. USED	REF NO.	PART NO.	DESCRIPTION	QTY. USED
1	PLG0025503	PLUNGER FRAME	1	20	902892	PL,SHIM	4
2	NCHS000375	HEX NUT NC 3/8" - SS	22	21	SHM0021922	SHIM	8
3	SQSS375200	3/8X2 SQ HEAD STE - SS	8	22	ROD0024910	ROD	1
4	PLG2192700	PL,LH TOP	1	23	247008	NUT, JAM; 3/4 NC GR8	4
5	PLG2192500	PL,LH	1	24	PLG0021920	PL,BTM	2
6	PLG2192701	PL,RH TOP	1	25	PLG0025903	PL,BACKUP	2
7	PLG2192501	PL,RH	1	26	253969	CYLINDER, MAIN; 42" STROKE	1
8	PLG0021923	BAR,BTM	1		256463	. SEAL KIT F/253969	1
9	PLG0021924	PL,BTM BACKUP	1	27	902209	. PIN,PLUNGER PIVOT	2
10	PLG2192601	PL,RH BACKUP	1	28	COT0000807	COTTER PIN	2
11	WCTS000375	FLATWASHER 3/8 - SS	32	29	903355	CLAMP	1
12	WLKS000375	3/8" LOCKWASHER - SS	48	30	209323	FITTING; ST	1
13	SCCS000303	HEX HD CS NC 3/8 X 1-1/4 -SS	32	31	209715	FITTING; EL	1
14	PLG2192801	PL,RH TOP BACKUP	1	32	PLG0021918	BAR,BTM RAIL	2
15	PLG2192800	PL,LH TOP BACKUP	1	33	PLG0021919	BAR,RAIL	2
16	PLG2192600	PL,LH BACKUP	1	34	SMFS000204	FLAT HD MS NC 5/16 X 1-1/2 - SS	76
17	SMFS000304	FLAT HD MS NC 3/8 X 1-1/2 - SS	32	35	236051	HEX NUT NC 5/16" - SS	76
18	231851	NUT, ESNA; 3/8 NC (SS)	16	36	235554	5/16" LOCKWASHER - STAINLESS	76
19	PLG0021900	PL, TOP	2				

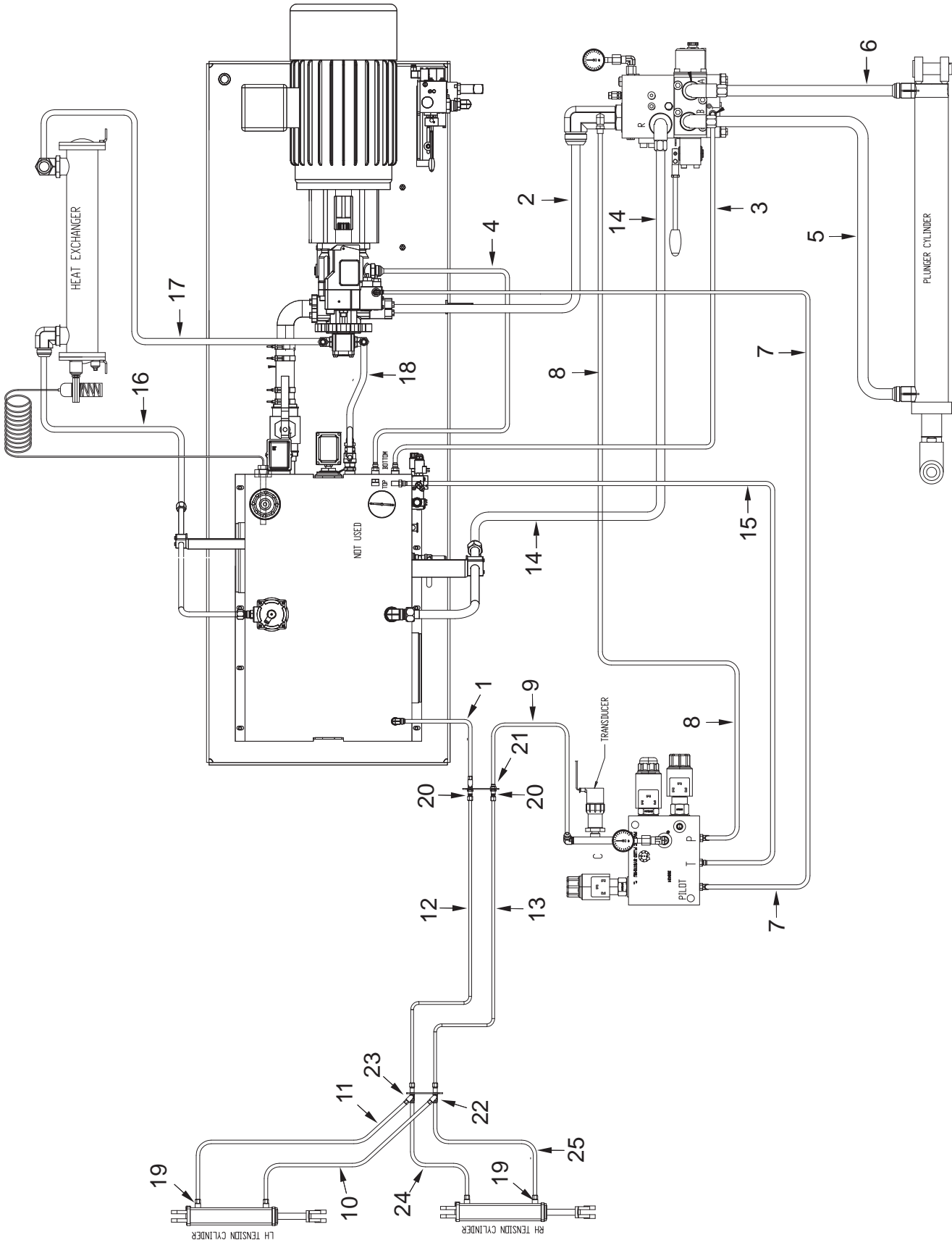
RESTRICTOR RAIL



RESTRICTOR RAIL

REF NO.	PART NO.	DESCRIPTION	QTY. USED	REF NO.	PART NO.	DESCRIPTION	QTY. USED
1	902172	RESTRICTOR RAIL	1	12	901230	BUSHING	2
2	RAL0021933	PL,BACKUP	2	13	233465	CAPSCREW; 3/8 NC X 1 1/4 SS	2
3	RAL0021932	PL,RAIL	2	14	231853	WASHER, FLAT; 3/8 SS	4
4	SMFS000308	FLAT HD MS NC 3/8" X 2-1/4 - SS	20	15	903487	LOCK COLLAR SS	2
5	WASS000143	3/8" STAINLESS BEVEL WASHER	20	16	231851	ESNA NUT NC 3/8 SS	2
6	WLKS000375	PL,BACKUP	24	17	CYL0009316	CYLINDER ASSY	2
7	NCHS000375	PL,RAIL	24		SEL0009300	. SEAL KIT	2
8	RAL0021935	PL,BACKUP	2	18	256506	1 x 4 CLEVIS PIN	4
9	RAL0021934	BAR	2	19	256507	3/16 x 1 3/4 COTTER PIN	8
10	SMFS000304	FLAT HD MS NC 3/8 X 1-1/2 - SS	4	20	HOS0025038	HOSE ASSY	1
11	903488	PIVOT PIN	2	21	253471	HOSE ASSY	1
				22	R12579595	FITTING	2
				23	253465	HOSE ASSY	1
				24	HOS0032870	HOSE ASSY	1

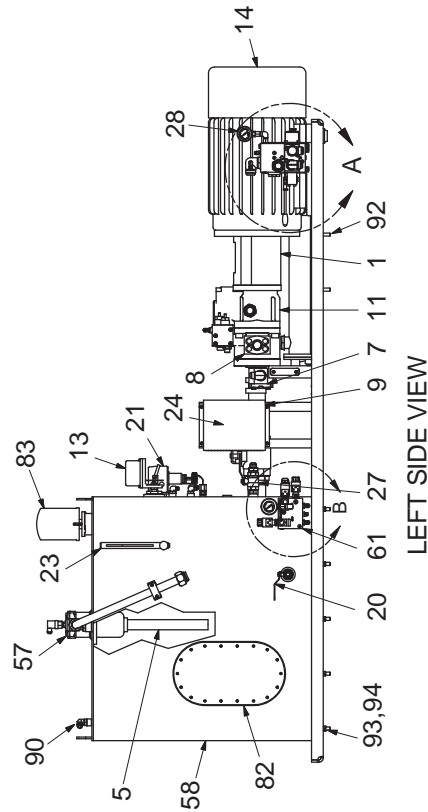
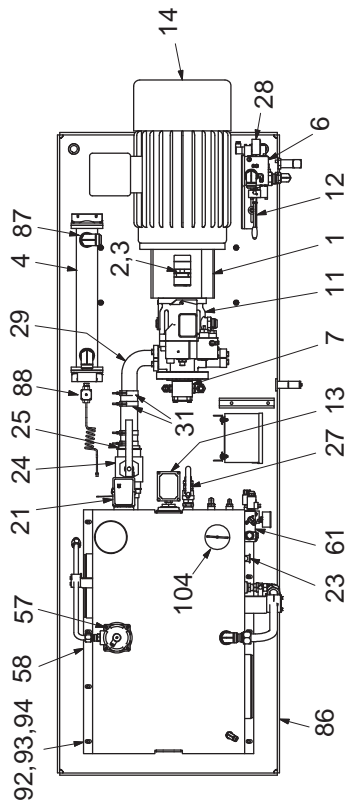
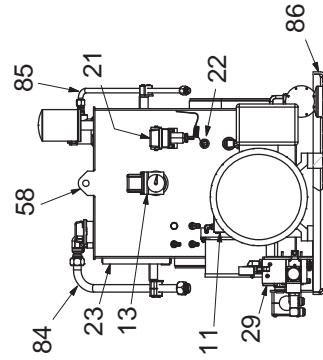
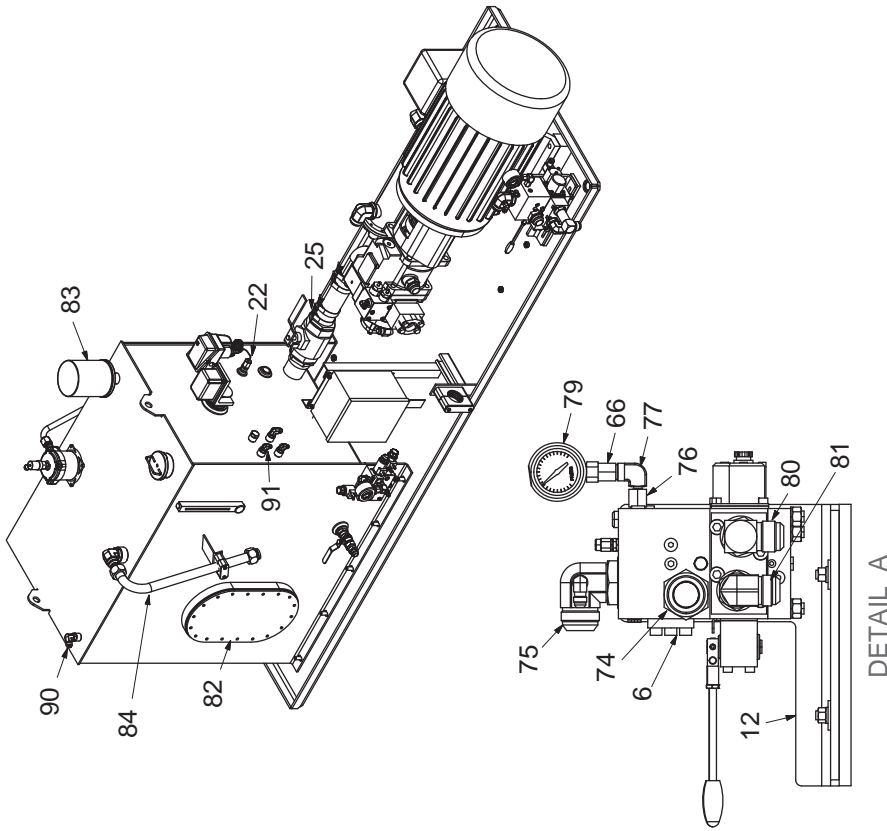
HOSES



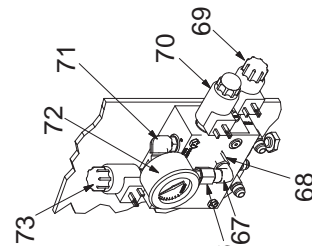
HOSES

REF NO.	PART NO.	DESCRIPTION	QTY. USED	REF NO.	PART NO.	DESCRIPTION	QTY. USED
1	255381	HOSE ASSEMBLY	1	17	21570	HOSE ASSY	1
2	255382	HOSE ASSEMBLY	1	18	225141	HOSE ASSY	1
3	255383	HOSE ASSEMBLY	1	19	209488	FITTING	4
4	255384	HOSE ASSEMBLY	1	20	243248	FITTING	2
5	255385	HOSE ASSEMBLY	1	21	244093	FITTING	2
6	255386	TUBE ASSEMBLY	1	22	237203	FITTING	4
7	255387	HOSE ASSEMBLY	1	23	HYD5725050	FITTING	2
8	255388	HOSE ASSEMBLY	1	24	HOS0025038	HOSE ASSEMBLY	1
9	255389	HOSE ASSEMBLY	1	25	253471	HOSE ASSEMBLY	1
10	255463	HOSE ASSEMBLY	1				
11	255464	HOSE ASSEMBLY	1				
12	902237	HOSE ASSEMBLY	1				
13	902238	HOSE ASSEMBLY	1				
14	254228	HOSE ASSEMBLY	1				
15	HOS0036662A	HOSE ASSEMBLY	1				
16	209172	HOSE ASSEMBLY	1				

POWER UNIT



LEFT SIDE VIEW

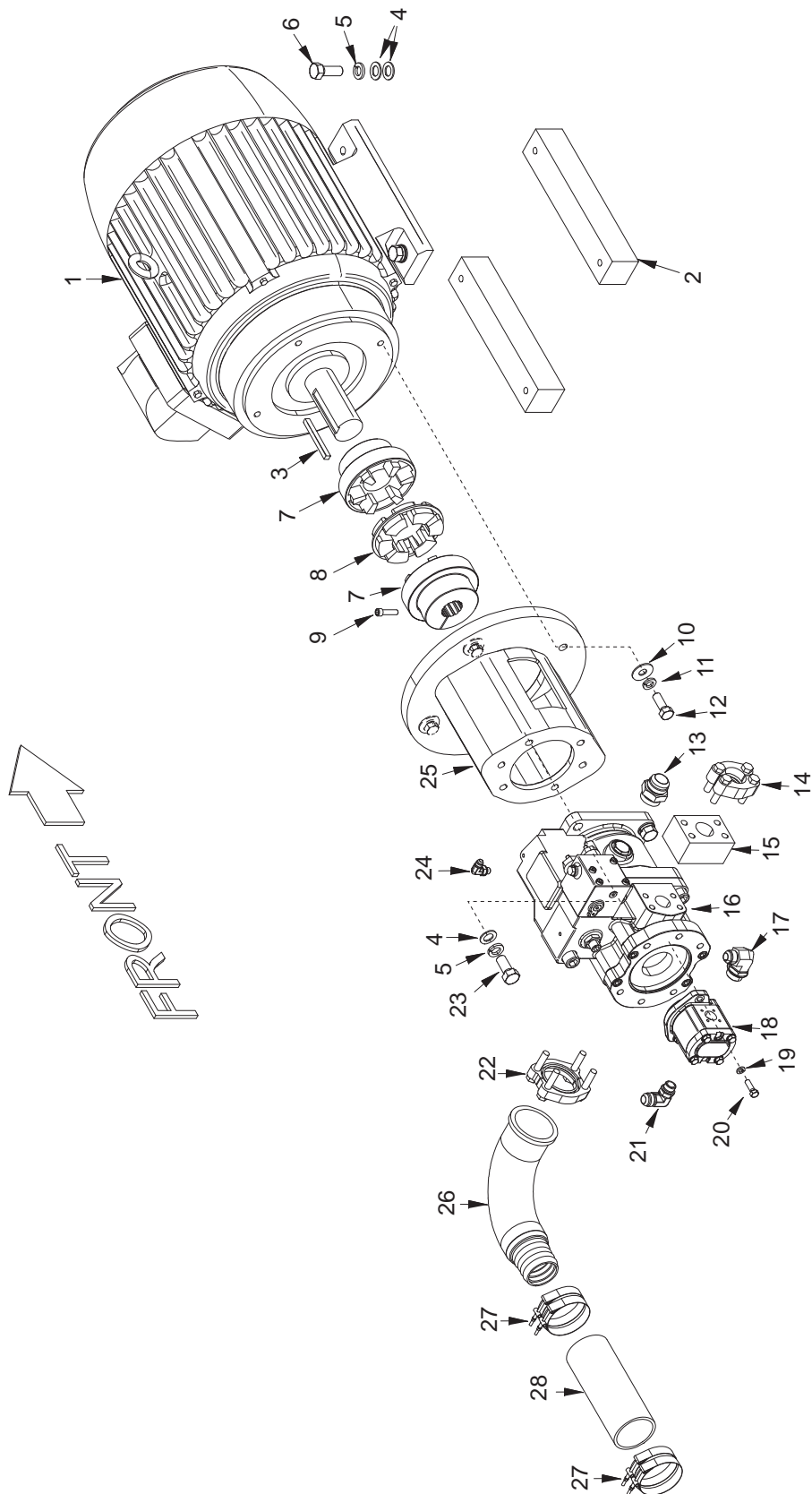


DETAIL B

POWER UNIT

REF NO.	PART NO.	DESCRIPTION	QTY. USED	REF NO.	PART NO.	DESCRIPTION	QTY. USED
1	253971	ADAPTER	1		256133	. KIT, SEAL	1
2	253972	COUPLING	1	70	256264	VALVE, CARTRIDGE;A; 2-POS, 3-WAY	1
3	253973	INSERT	1		256132	. KIT, SEAL	1
4	255722	HEAT EXCHANGER	1	71	224298	FITTING; EL	1
5	902960	INLINE FILTER PIPE	1	72	214203	GAUGE	1
6	253976	VALVE, DIRECTIONAL	1	73	256021	VALVE, RELIEF; 0-3000 PSI	1
7	253977	PUMP, GEAR	1		244647	. KIT, SEAL	1
8	253978	VALVE, CHECK	1	74	209619	FITTING; ST	1
11	253981	PUMP	1	75	529950	FITTING	1
12	903007	BRACKET	1	76	20856	FITTING; ST	1
13	SWI0059037	SWITCH, FLOAT	2	77	223638	FITTING; EL	1
14	253990	MOTOR, 40HP	9	79	231335	GAUGE	1
20	218923	VALVE, BALL	1	80	15325	FITTING; EL	1
21	253673	SWITCH, TEMP	1	81	209715	FITTING; EL	1
22	254006	THERMOWELL	1	82	902216	PL,COVER (RIGHT SIDE)	1
23	253675	GAUGE, SIGHT LEVEL/TEMP	1		903263	COVER WLDMT (LEFT SIDE)	1
24	254007	VALVE, BALL	1		578833	GASKET	2
25	253420	FITTING	1		R13811014	CS; 5/16 UNC X 1 HX HD	36
27	254010	VALVE, BALL	1		R13802621	WASHER, FLAT; 5/16	36
29	254155	FITTING	1		223657	WASHER, LOCK; 5/16 HEL SPR	36
31	225369	CLAMP, T-BOLT	4	83	256179	ELEMENT, BREATHER	1
57	254004	FILTER ASSY	1	84	902993	TUBE ASSY	1
	255997	. INDICATOR, ELEC	1	85	902279	TUBE ASSY	1
	255996	. FILTER ELEMENT	1	86	902452	TRAY WLDMT, HPU	1
58	902516	TANK WLDMT	1	87	209137	FITTING; EL	2
61	255121	MANIFOLD,CNTRL PUMP & TEN CNTRL	1	88	255723	WATER VALVE, MODULATING	1
62	Y01C-0448	CAPSCREW; 1/4 UNC X 3 HX HD	2	89	11860	FITTING; EL	1
63	R13801972	FITTING	2	90	229384	FITTING; EL	1
64	211560	FITTING; ST	1	91	23945	FITTING; EL	3
66	225648	SNUBBER, GAUGE	2	92	WCTS000500	FLATWASHER 1/2 STAINLESS	10
67	223638	FITTING; EL	1	93	233572	WASHER, LOCK; 1/2 STAINLESS	24
68	20856	FITTING; ST	1	94	235807	NUT, HEX; 1/2 NC STAINLESS	24
69	253979	VALVE, PROP RELIF	1				

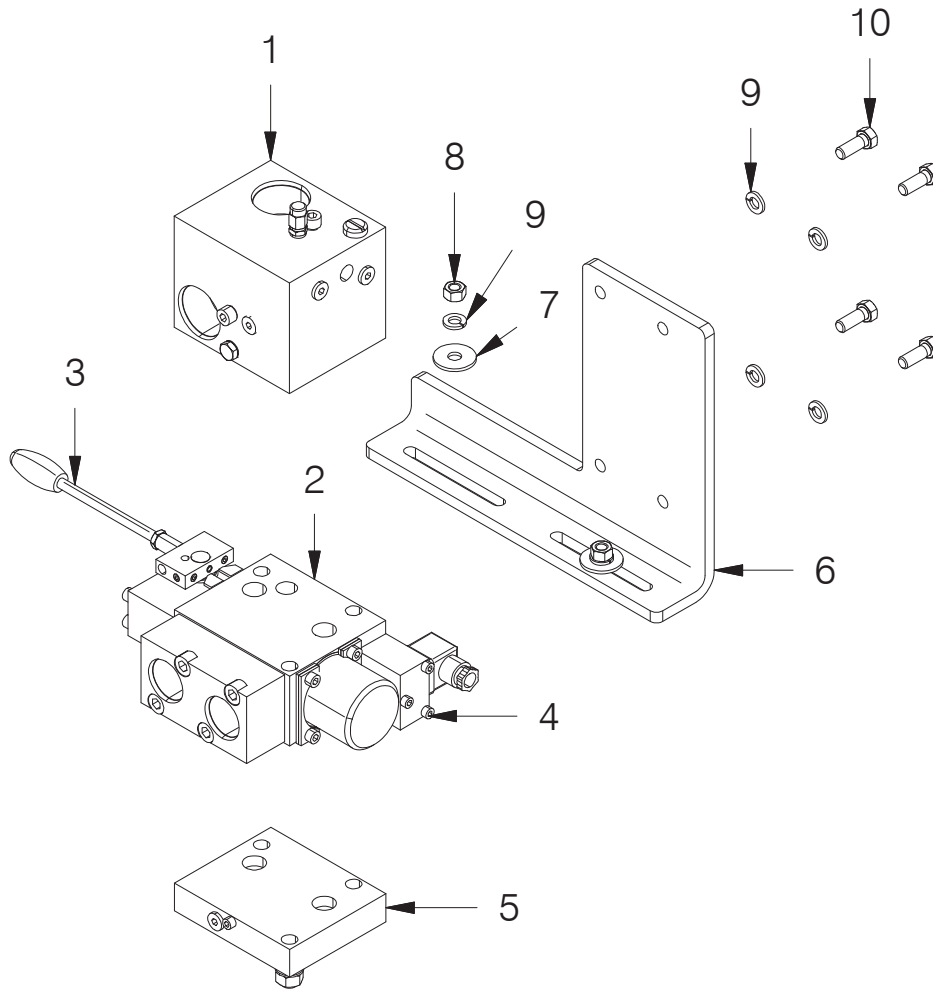
MOTOR AND PUMP



MOTOR AND PUMP

REF NO.	PART NO.	DESCRIPTION	QTY. USED	REF NO.	PART NO.	DESCRIPTION	QTY. USED
1	253990	MOTOR, ELEC;	1	16	253981	PUMP, PISTON	1
2	902911	MOTOR, MOUNT	2	17	12666	FITTING; EL	1
3	YSC6-3.00	5/8" KEYSTOCK @3" LONG	1	18	253977	PUMP, GEAR	1
4	234173	WASHER, FLAT; 3/4 (SS)	12	19	WLKS000375	3/8" LOCKWASHER - SS	2
5	241822	WASHER, LOCK; 3/4 (SS)	8	20	233465	CAPSCREW; 3/8 NC X 1 1/4 (SS)	2
6	234126	CAPSCREW; 3/4 NC X 2 (SS)	4	21	209490	FITTING; EL	1
7	253972	COUPLING, HALF	1	22	23390	KIT, SPLIT FLANGE	1
8	253973	INSERT	1		200604	. WASHER	2
9	R13811804	CS; 3/8 UNC X 1, SOC HD	1		201621	. CAPSCREW	2
10	234172	WASHER, FLAT; 5/8 (SS)	4		203523	. O-RING	1
11	232510	WASHER, LOCK; 5/8 SPR (SS)	4		209539	. CLAMP HALF	2
12	238183	CAPSCREW; 5/8 NC X 1 3/4 (SS)	4	23	234550	CAPSCREW; 3/4 NC X 1 3/4 (SS)	4
13	209619	FITTING; ST	1	24	11860	FITTING; EL	1
14	229449	KIT, SPLIT FLANGE	1	25	253971	ADAPTER	1
	200604	. WASHER	4	26	254155	FITTING	1
	203446	. O-RING	1	27	225369	CLAMP, T-BOLT	4
	225328	. CLAMP HALF	2	28	201440	HOSE, SUCTION	1
	230961	. CAPSCREW	4				
15	253978	VALVE, CHECK	1				

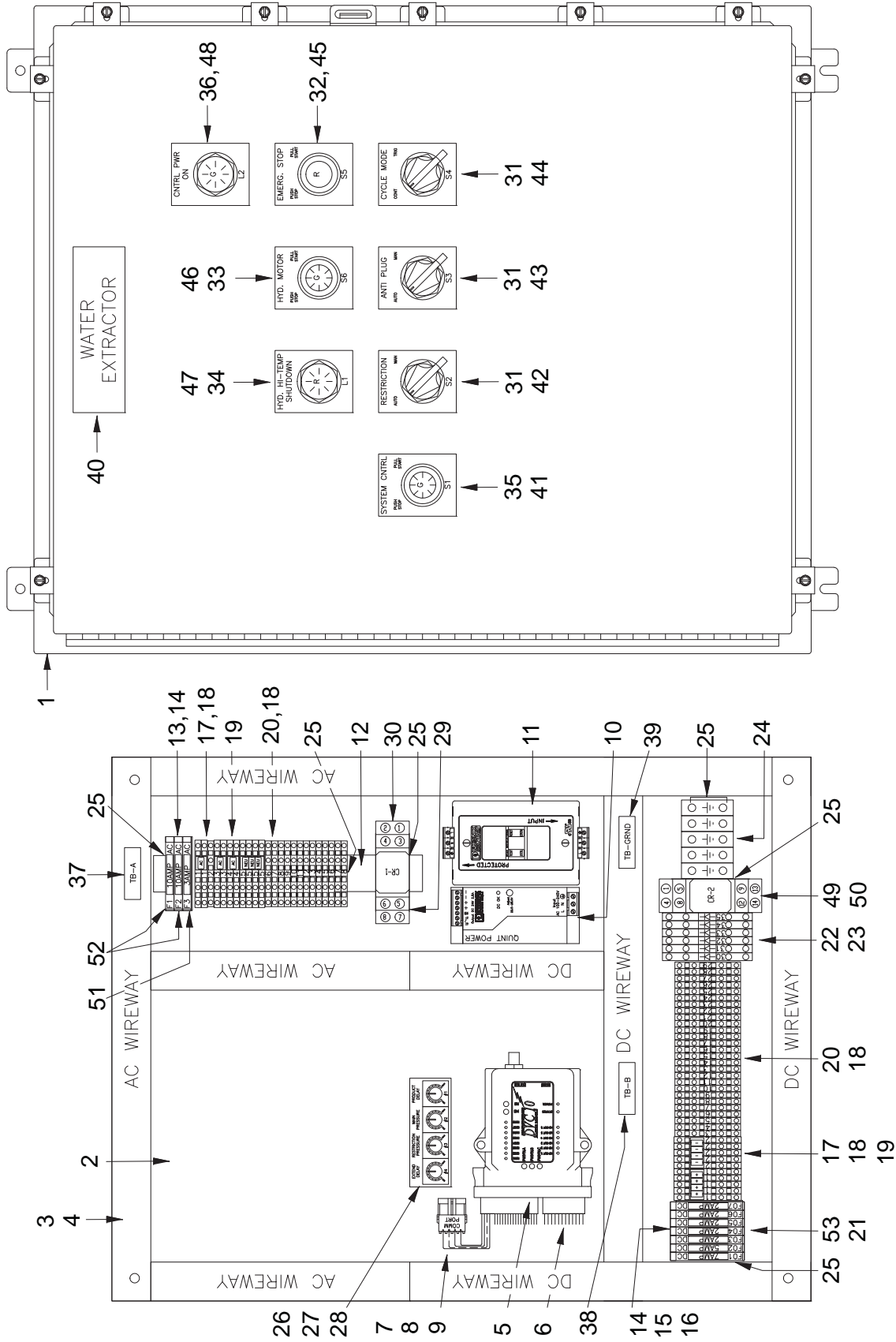
HYDRAULICS MANIFOLD



HYDRAULICS MANIFOLD

REF NO.	PART NO.	DESCRIPTION	QTY. USED
	253976	VALVE, DIRECTIONAL	
1	256135	. CONN BLOCK	1
	250838	. . KIT, SEAL	1
2	256535	. WORK SECTION	1
	251816	. . KIT, SEAL	1
3	251917	. LEVER	1
4	256130	. COIL	1
5	256534	. PLATE, END	1
6	903008	BRACKET	1
7	233869	CAPSCREW; 3/8 NC X 1 1/2 304(SS)	2
8	NCHS000375	HEX NUT NC 3/8" - SS	2
9	233569	WASHER, LOCK; 3/8 (SS)	2
10	231853	WASHER, FLAT; 3/8 (SS)	2
11	NCJS000500	NUT, JAM; 1/2 NC (SS)	4
12	233465	CAPSCREW; 3/8 NC X 1 1/4 (SS)	4

CONTROL BOX



CONTROL BOX

REF NO.	PART NO.	DESCRIPTION	QTY. USED	REF NO.	PART NO.	DESCRIPTION	QTY. USED
	255181	CONTROL PANEL ASSEMBLY		27	256201	. POTENTIOMETER KNOB	4
1	256185	. ENCLOSURE 30 X 24 X 8	1	28	256202	.4 HOLE POT MOUNTING BRACKET	1
2	256186	. BACK PANEL	1	29	256018	. RELAY	1
3	256187	. WIREWAY	2	30	256017	. RELAY SOCKET	1
4	256188	. WIREWAY COVER	2	31	256203	. 2 POS SEL SW MAINT	3
5	902245	. CONTROL MODULE, PROGRAMED	1	32	256204	. EM STOP PUSH/PULL MAINT	1
6	252638	. KIT, CONNECTOR;A; DVC-10	1	33	256205	. START/STOP 120 VAC LIGHT	1
7	2381551	. CONNECTOR, WIRE	1	34	256206	. IND RED LIGHT 120VAC	1
8	R7408664	. PIN, MALE	4	35	256207	. START/STOP 24VDC LIGHT	1
9	R740867	. SEAL, WIRE;	4	36	256208	. IND GREEN LIGHT 120VDC	1
10	254146	. POWER SUPPLY;	1	37	256210	. 1/2 X 2 TB-A	1
11	256209	. GFCI EM	1	38	256211	. 1/2 X 2 TB-B	1
12	256189	. DIN RAIL	1	39	256212	. 1/2 X 2 GROUND	1
13	248197	. COVER, END	3	40	256213	. 1/2 X 6.5 WATER EXTRACTOR	1
14	256190	. FUSE END PLATE	1	41	256214	. 3 X 2.5 SYSTEM CONTROL	1
15	256191	. 24V FUSE BLOCK	7	42	256215	. 3 X 2.5 RESTRICTION	1
16	256192	. 7 AMP FUSE	1	43	256216	. 3 X 2.5 ANTI PLUG	1
17	256193	. TERMINAL BLOCK	19	44	256217	. 3 X 2.5 CYCLE MODE	1
18	256194	. END PLATE	2	45	256218	. 3 X 2.5 EMERG. STOP	1
19	250697	. JUMPER	14	46	256219	. 3 X 2.5 HYD. MOTOR	1
20	256195	. TERMINAL BLOCK	37	47	256220	. 3 X 2.5 HYD HI-TEMP SHUTDOWN	1
21	256016	. 2 AMP FUSE	5	48	256221	. 3 X 2.5 CNTRL PWR ON	1
22	256196	. DIODE TERMINAL BLOCK	6	49	256020	. RELAY	1
23	256197	. END PLATE	1	50	256019	. RELAY SOCKET	1
24	256198	. GROUNDING TB'S	7	51	246933	. 10 AMP FUSE	2
25	256199	. END STOP	7	52	243609	. 3 AMP FUSE	1
26	256200	. POTENTIOMETER 5W, 10K OHM	4	53	243577	. 5 AMP FUSE	1

Part Number	Description	Page Number	Part Number	Description	Page Number
11860	FITTING; EL	14	253471	HOSE ASSEMBLY	12
11860	FITTING; EL	16	253673	SWITCH, TEMP	14
12666	FITTING; EL	16	253675	GAUGE, SIGHT LEVEL/TEMP	14
15325	FITTING; EL	14	253969	CYLINDER, MAIN; 42" STROKE	8
20856	FITTING; ST	14	253971	ADAPTER	14
20856	FITTING; ST	14	253971	ADAPTER	16
21570	HOSE ASSY	12	253972	COUPLING	14
22623	PANEL, BACK	4	253972	COUPLING, HALF	16
22628	RAIL	4	253973	INSERT	14
23390	KIT, SPLIT FLANGE	16	253973	INSERT	16
23945	FITTING; EL	14	253976	VALVE, DIRECTIONAL	14
27054	RING NUT	4	253976	VALVE, DIRECTIONAL	18
27663	CONNECTOR, CORD	2	253977	PUMP, GEAR	14
27663	CONNECTOR, CORD	4	253977	PUMP, GEAR	16
27663	CONNECTOR, CORD	6	253978	VALVE, CHECK	14
201440	HOSE, SUCTION	16	253978	VALVE, CHECK	16
203446	O-RING	16	253979	VAVLE, PROP RELIF	14
203523	O-RING	16	253981	PUMP	14
204389	SEAL	2	253981	PUMP, PISTON	16
209137	FITTING; EL	14	253990	MOTOR, 40HP	14
209172	HOSE ASSEMBLY	12	253990	MOTOR, ELEC;	16
209323	FITTING; ST	8	254004	FILTER ASSY	14
209488	FITTING	12	254006	THERMOWELL	14
209490	FITTING; EL	16	254007	VALVE, BALL	14
209539	CLAMP HALF	16	254010	VALVE, BALL	14
209619	FITTING; ST	14	254146	POWER SUPPLY;	20
209619	FITTING; ST	16	254155	FITTING	14
209715	FITTING; EL	8	254155	FITTING	16
209715	FITTING; EL	14	254163	SENSOR, PROX	2
211560	FITTING; ST	14	254228	HOSE ASSEMBLY	12
214203	GAUGE	14	254617	GUIDE RAIL;A; 1/2 X 1/2 X 1/4 UHMW	2
218923	VALVE, BALL	14	255121	MANIFOLD,CNTRL PUMP & TEN CNTRL	14
223638	FITTING; EL	14	255181	CONTROL PANEL ASSEMBLY	20
223638	FITTING; EL	14	255381	HOSE ASSEMBLY	12
223657	WASHER, LOCK; 5/16 HEL SPR	14	255382	HOSE ASSEMBLY	12
224298	FITTING; EL	14	255383	HOSE ASSEMBLY	12
225141	HOSE ASSY	12	255384	HOSE ASSEMBLY	12
225328	CLAMP HALF	16	255385	HOSE ASSEMBLY	12
225369	CLAMP, T-BOLT	14	255386	TUBE ASSEMBLY	12
225369	CLAMP, T-BOLT	16	255387	HOSE ASSEMBLY	12
225648	SNUBBER, GAUGE	14	255388	HOSE ASSEMBLY	12
225871	TRIM, EDGE	2	255389	HOSE ASSEMBLY	12
229384	FITTING; EL	14	255463	HOSE ASSEMBLY	12
229449	KIT, SPLIT FLANGE	16	255464	HOSE ASSEMBLY	12
231335	GAUGE	14	255722	HEAT EXCHANGER	14
232237	TERMINAL BLOCK 280-641	4	255723	WATER VALVE, MODULATING	14
232510	WASHER, LOCK; 5/8 SPR (SS)	16	255996	FILTER ELEMENT	14
236926	JUMPER, HORIZONTAL	4	255997	INDICATOR, ELEC	14
237203	FITTING	12	256016	2 AMP FUSE	20
238183	CAPSCREW; 5/8 NC X 1 3/4 (SS)	16	256017	RELAY SOCKET	20
239317	TERMINAL BLOCK 280-646	4	256018	RELAY	20
241761	STOP, END 249-117	4	256019	RELAY SOCKET	20
243248	FITTING	12	256020	RELAY	20
243577	5 AMP FUSE	20	256021	VALVE, RELIEF; 0-3000 PSI	14
243609	3 AMP FUSE	20	256130	COIL	18
244093	FITTING	12	256132	KIT, SEAL	14
244112	SWITCH, PROX	6	256133	KIT, SEAL	14
244647	KIT, SEAL	14	256135	CONN BLOCK	18
246933	10 AMP FUSE	20	256179	ELEMENT, BREATHER	14
248197	COVER, END	20	256185	ENCLOSURE 30 X 24 X 8	20
250697	JUMPER	20	256186	BACK PANEL	20
250838	KIT, SEAL	18	256187	WIREWAY	20
250839	KIT, SEAL	18	256188	WIREWAY COVER	20
251917	LEVER	18	256189	DIN RAIL	20
252638	KIT, CONNECTOR;A; DVC-10	20	256190	FUSE END PLATE	20
253420	FITTING	14	256191	24V FUSE BLOCK	20
253465	HOSE ASSY	10	256192	7 AMP FUSE	20
253471	HOSE ASSY	10	256193	TERMINAL BLOCK	20

Part Number	Description	Page Number	Part Number	Description	Page Number
256194	END PLATE	20	BKT0023959	BRACKET	2
256195	TERMINAL BLOCK	20	BKT0026116	BRACKET,SENSOR MTG; WE4/WE5	2
256196	DIODE TERMINAL BLOCK	20	BSH0026123	FITTING	2
256197	END PLATE	20	COT0000807	COTTER PIN	8
256198	GROUNDING TB'S	20	CYL0009316	CYLINDER ASSY	10
256199	END STOP	20	F000008221	CONNECTOR; 1/4 MALE (COPPER)	2
256200	POTENTIOMETER 5W, 10K OHM	20	FD00007111	DECAL; FREEMAN (25" X 4" WHITE)	2
256201	POTENTIOMETER KNOB	20	GRM0005008	1/2" STD SNAP BUSHING GROMMET	4
256202	4 HOLE POT MOUNTING BRACKET	20	HAN0000817	HANDLE, GRAB	2
256203	2 POS SEL SW MAINT	20	HOS0025038	HOSE ASSY	10
256204	EM STOP PUSH/PULL MAINT	20	HOS0025038	HOSE ASSEMBLY	12
256205	START/STOP 120 VAC LIGHT	20	HOS0032870	HOSE ASSY	10
256206	IND RED LIGHT 120VAC	20	HOS0036662A	HOSE ASSEMBLY	12
256207	START/STOP 24VDC LIGHT	20	HYD5725050	FITTING	12
256208	IND GREEN LIGHT 120VDC	20	HYD6600404	1/4 MALE CONNECTOR	2
256209	GFCI EM.	20	MNT0024567	PL,COVER	6
256210	1/2 X 2 TB-A	20	NCHS000375	HEX NUT NC 3/8" - SS	8
256211	1/2 X 2 TB-B	20	NCHS000375	PL,RAIL	10
256212	1/2 X 2 GROUND	20	PLG0021900	PL, TOP	8
256213	1/2 X 6.5 WATER EXTRACTOR	20	PLG0021918	BAR,BTM RAIL	8
256214	3 X 2.5 SYSTEM CONTROL	20	PLG0021919	BAR,RAIL	8
256215	3 X 2.5 RESTRICTION	20	PLG0021920	PL,BTM	8
256216	3 X 2.5 ANTI PLUG	20	PLG0021923	BAR,BTM	8
256217	3 X 2.5 CYCLE MODE	20	PLG0021924	PL,BTM BACKUP	8
256218	3 X 2.5 EMERG. STOP	20	PLG0025503	PLUNGER FRAME	8
256219	3 X 2.5 HYD. MOTOR	20	PLG0025903	PL,BACKUP	8
256220	3 X 2.5 HYD HI-TEMP SHUTDOWN	20	PLG2192500	PL,LH	8
256221	3 X 2.5 CNTRL PWR ON	20	PLG2192501	PL,RH	8
256264	VALVE, CARTRIDGE;A; 2-POS, 3-WAY	14	PLG2192600	PL,LH BACKUP	8
256463	SEAL KIT F/253969	8	PLG2192601	PL,RH BACKUP	8
256506	1 x 4 CLEVIS PIN	10	PLG2192700	PL,LH TOP	8
256507	3/16 x 1 3/4 COTTER PIN	10	PLG2192701	PL,RH TOP	8
256534	PLATE, END	18	PLG2192800	PL,LH TOP BACKUP	8
256535	WORK SECTION	18	PLG2192801	PL,RH TOP BACKUP	8
529950	FITTING	14	R12579595	FITTING	10
578833	GASKET	14	R13801972	FITTING	14
900923	CHUTE ASSY,INFEED;*B; WE4B	2	R7408664	PIN, MALE	20
901230	BUSHING	10	R740867	SEAL, WIRE;	20
901651	BLOCK,STOP	2	RAL0021932	PL,RAIL	10
901651	BLOCK,STOP	2	RAL0021933	PL,BACKUP	10
902139	CHUTE WLDMT,INFEED;*C; WE4B	2	RAL0021934	BAR	10
902172	RESTRICTOR RAIL	10	RAL0021935	PL,BACKUP	10
902209	PIN,PLUNGER PIVOT	8	ROD0024910	ROD	8
902216	PL,COVER (RIGHT SIDE)	14	SEL0009300	SEAL KIT	10
902237	HOSE ASSEMBLY	12	SHM0021922	SHIM	8
902238	HOSE ASSEMBLY	12	SWI0059037	SWITCH, FLOAT	14
902245	CONTROL MODULE,PROGRAMED	20	TBE0261300	1/4 FEMALE CONNECTOR	2
902279	TUBE ASSY	14	VLV0000400	1/4 NEEDLE VALVE F/ WE4A	2
902452	TRAY WLDMT, HPU	14	VLV0026113	AIR VALVE	2
902468	FRAME ASSY,MAIN WE5	2	WASS000143	3/8" STAINLESS BEVEL WASHER	10
902501	PL, INNER	2	WLKS000375	PL,BACKUP	10
902502	PL, OUTER	2	WND0024498	WINDOW	2
902516	TANK WLDMT	14	YSC6-3.00	5/8" KEYSTOCK @3" LONG	16
902889	MOUNTING; PLUNGER SENSOR	6			
902892	PL,SHIM	8			
902911	MOTOR, MOUNT	16			
902960	INLINE FILTER PIPE	14			
902993	TUBE ASSY	14			
903000	JUNCTION BOX ASSY; WE4B/WE5A	4			
903001	BOX	4			
903007	BRACKET	14			
903008	BRACKET	18			
903263	COVER WLDMT (LEFT SIDE)	14			
903355	CLAMP	8			
903487	LOCK COLLAR SS	10			
903488	PIVOT PIN	10			
2381551	CONNECTOR, WIRE	20			
9416918	NUT, SERRATED; 1/4 NC GR5 FLGD	2			



To find a dealer in your area,
Call: 503-625-2560,
Fax: 503-625-7269, or

Visit our website: <http://www.alliedsystems.com>

Allied Systems
COMPANY

PB000WE508
Printed in USA