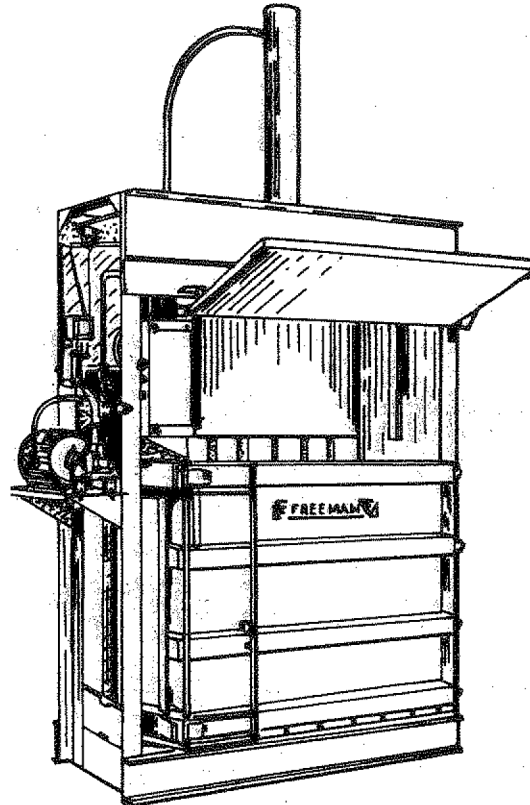




FREEMAN

48" SOLID WASTE BALER (48SDA) PARTS MANUAL



manufactured and distributed by

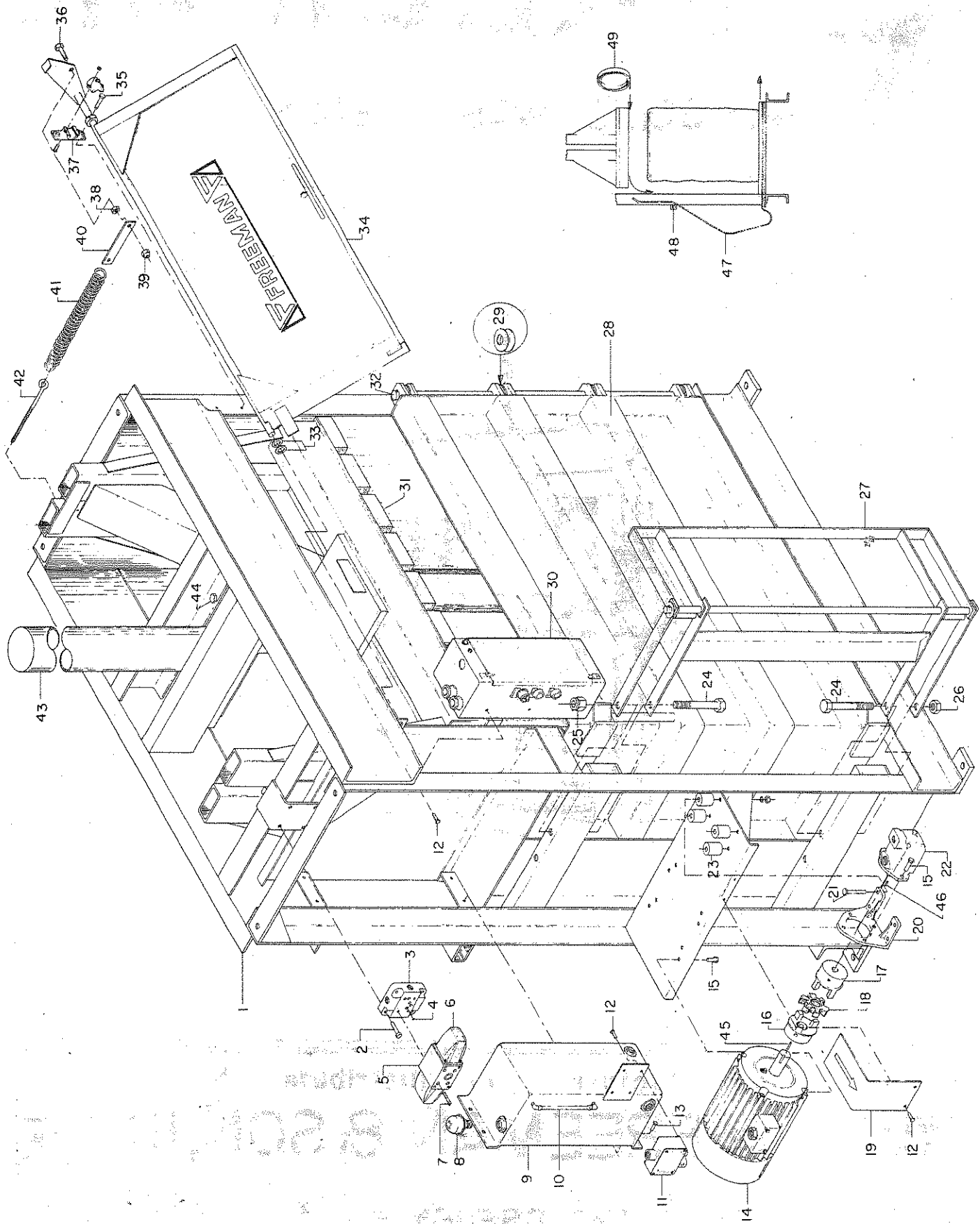


J. A. FREEMAN & SON, INC.

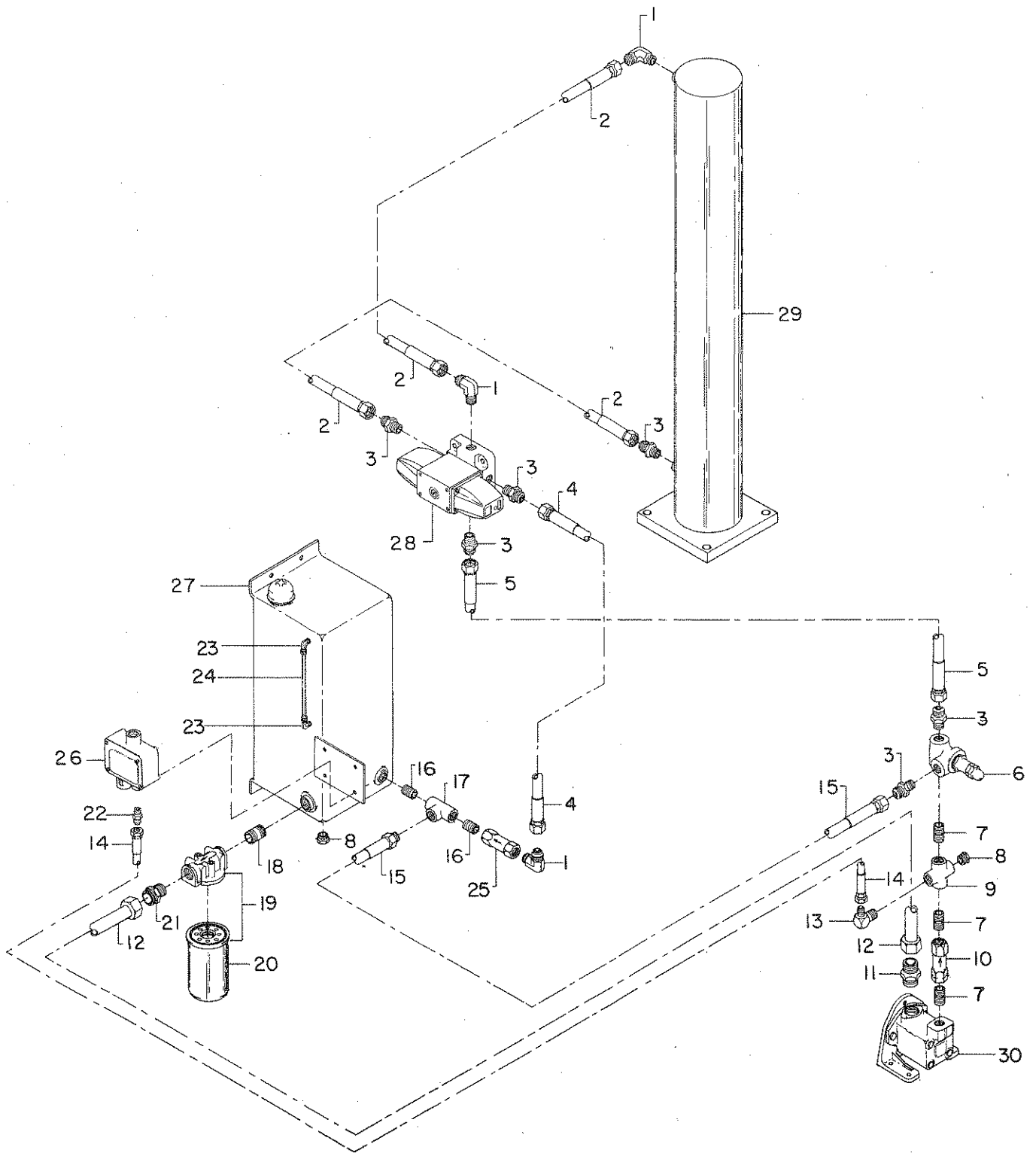


PORTLAND, OREGON

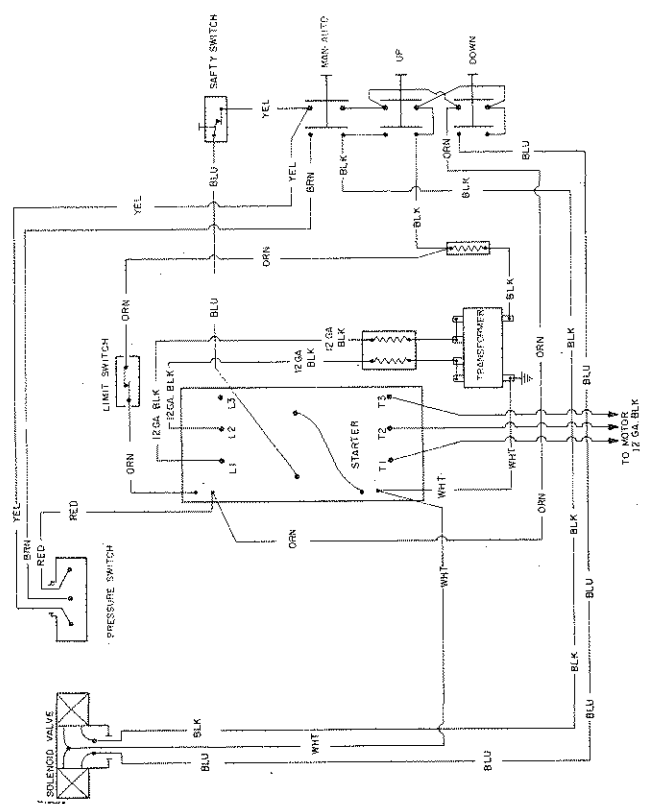
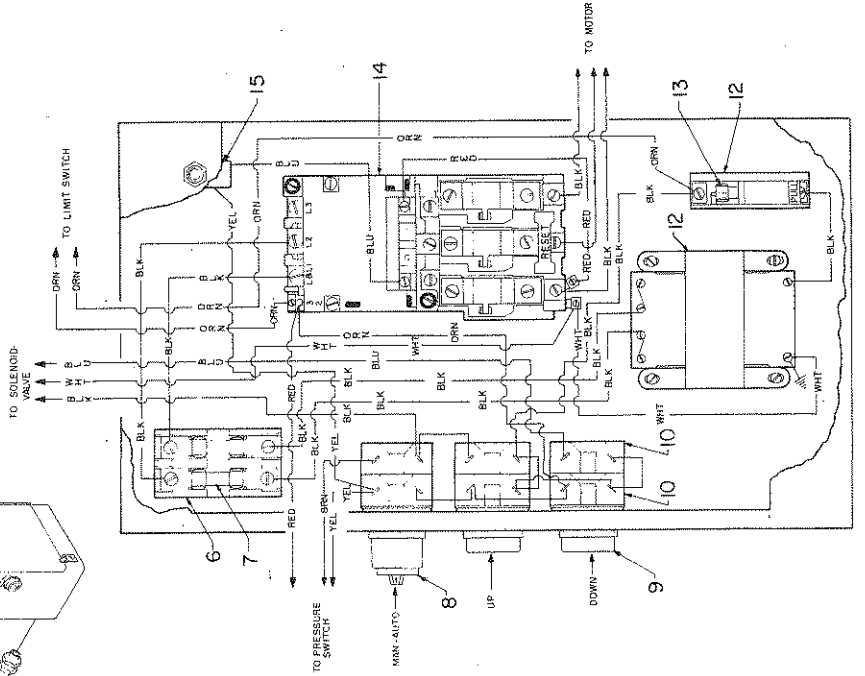
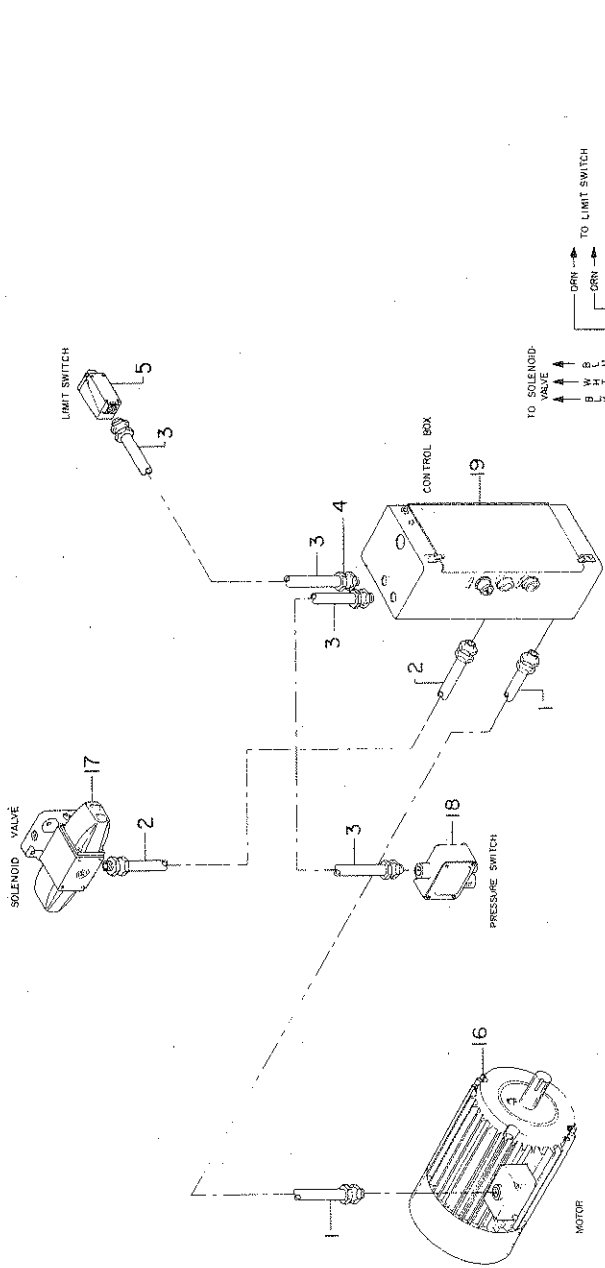
PB00004800



REF. NO.	PART NO.	DESCRIPTION
1	WB5716	Main frame
2		Cap screw, 3/8" UNC x 1-3/4", 4 used
3	01-530	Sub. plate
4	01-529	"O" ring, 5 used
5	01-528	Solenoid valve
6	ELC-150002	Solenoid, 2 used
7	01-531	Bolt kit (4 bolts w/lock washer)
8	FT530	Breather cap
9	WB6677	Tank
10	F8199	Sight gauge
11	ELC-5006	Pressure switch
12		Cap screw, 1/4" UNC x 1", 6 used
13		Cap screw, 5/16" UNC x 1", 4 used
14	ELC-10001	Electric motor, 220/440V
	ELC-10006	Electric motor, 208V
15		Cap screw, 3/8" UNC x 1-1/4", 4 used
16	F3221	Half coupling, 1-1/8" bore
17	F3222	Half coupling, 3/4" bore
18	F3223	Coupling insert
	F3101	Coupling complete, 1-1/8" x 3/4"
19	WB5952	Shield
20	01-635	Foot for pump
21		Cap screw, 3/8" UNC x 3-1/2", 4 used
22	01-633	Pump
23	WB5397	Spacer, 4 used
24		Cap screw, 3/4" UNC x 6", 2 used per door
25		Esna nut, 3/4" UNC
26		Thin nut, 3/4" UNC
27	WB5694	Latch, 2 used on double door
28	WB5663	Door, 2 used on double door
29		Washer, 1" heavy, 8 used per door
30	WB6679	Control box
31	WB5655	Top platen
32	WB3632	Door pin
33		Washer, 3/4" machine, used as needed
34	WB5659	Loading door
35		Cap screw, 5/16" UNC x 1-1/2", 2 used
36		Cap screw, 1/2" UNC x 1-3/4"
37	F569	Bearing
38		Nut, 1/2" UNC
39		Esna nut, 1/2" UNC
40	WB5019	Link
41	F987	Spring
42	F96	Eye bolt
43	01-576	Cylinder, 5x36
	01-577	Seal kit for 01-576
	01-578	Shaft seal for 01-576
		When ordering seal kits, give model and serial number of Baler
44		Cap screw, 5/8" UNC x 2-1/2"
45	ZZ405	1/4" key
46	ZZ404	3/16" key
47	WB6680	Cable, single door only
	06-151	Cable clamps, 2 used, single door only
48	WB6681	Roller, single door only
49	WB6678	Needle
50	01-533	5" check valve, used after 6-1-76

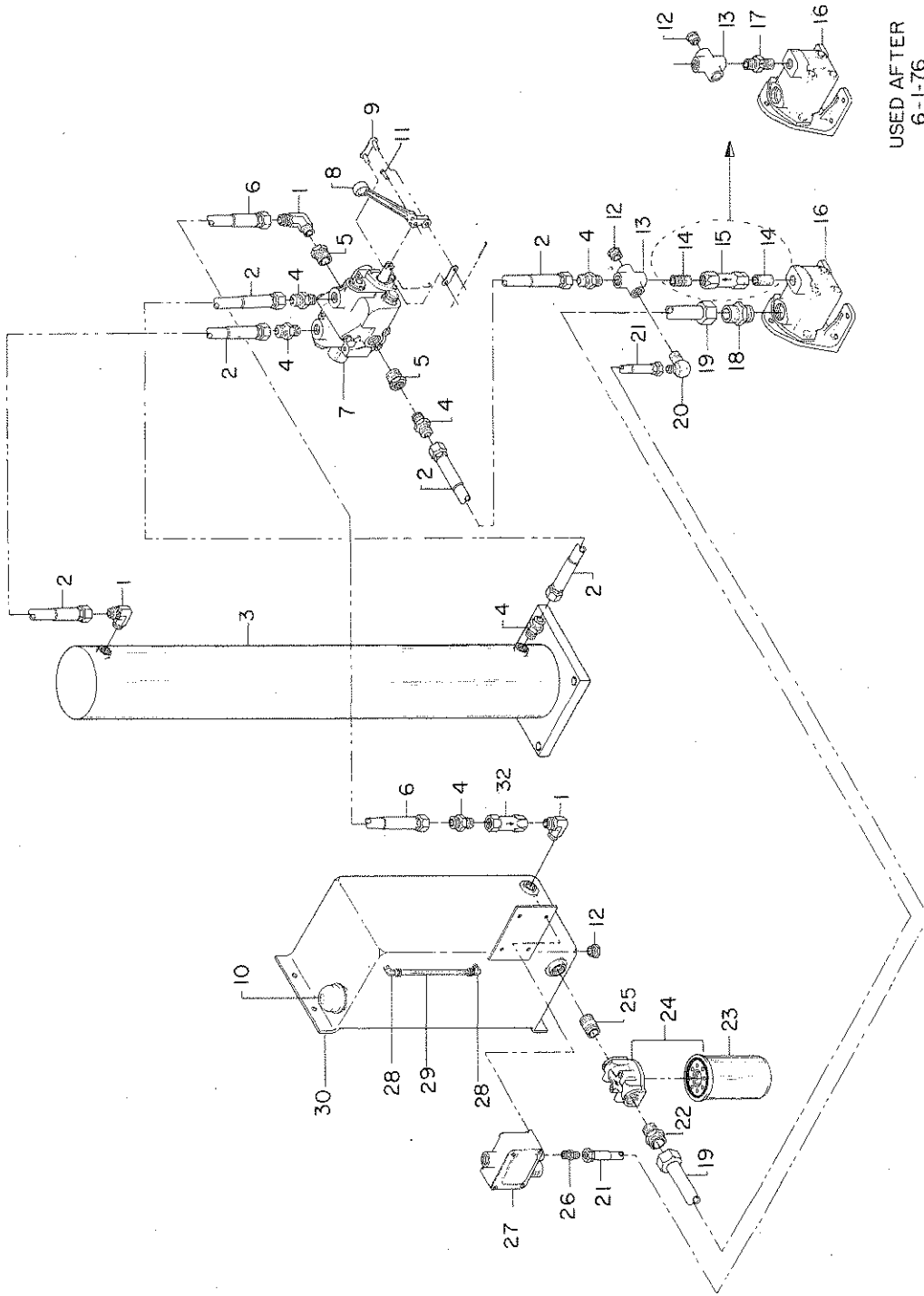


<u>REF. NO.</u>	<u>PART NO.</u>	<u>DESCRIPTION</u>
1	01-443	90 ⁰ male elbow, 37 ⁰ JIC flare, 3 used
2	01-260	1/2" rubber hose, 2 used
3	01-442	Male connector, 37 ⁰ JIC flare, 6 used
4	01-265	1/2" rubber hose
5	01-264	1/2" rubber hose
6	01-532	Relief valve
7	01-720	1/2" x 1'1/2" x H nipple, 2 used
8	01-717	1/2" plug
9	01-725	1/2" steel cross
10	F6657	1/2" 5 lb. check valve
11	F3102	Male connector
12	WB6682	Suction line
13	F6673	90 ⁰ male elbow, 37 ⁰ JIC flare
14	FT221	1/4" plastic hose
15	01-266	1/2" plastic hose
16	01-720	1/2" close XH nipple, 2 used
17	01-702	1/2" steel tee
18	01-737	3/4" close x H nipple
19	01-635	Filter
20	01-636	Filter element
21	01-450	Male connector
22	FT219	Male connector, 37 ⁰ JIC flare
23	F8209	Male elbow
24	WB6678	Sight gauge
25	01-502	1/2", 65# check valve
26	See Page 1	Pressure switch
27	See Page 1	Oil tank
28	See Page 1	Valve
29	See Page 1	Cylinder
30	See Page 1	Pump



<u>REF. NO.</u>	<u>PART NO.</u>	<u>DESCRIPTION</u>
1	ELC-20001	Flex conduit
2	ELC-20002	Flex conduit
3	ELC-20003	Flex conduit, 2 used
4	ELC-20004	Flex conduit fitting, 8 used
5	ELC-5000	Limit switch
	ELC-5001	Lever arm
6	ELC-10	Double fuse block
7	ELC-11	Fuse, .6 amp
8	ELC-5002	Selector switch
9	ELC-5003	Push button switch, 2 used
10	ELC-5004	Contact block, 6 used
11	ELC-15001	Transformer
12	ELC-12	Single fuse block
13	ELC-13	Fuse, 1-1/4 amp
14	ELC-10002	Starter w/ coil, no heaters
	ELC-10003	Heater, 220V or 208V, 3 required
	ELC-10004	Heater, 440V, 3 required
	ELC-10005	Coil, 115 Volt
15	ELC-5005	Safety switch
16	See Page 1	Motor
17	See Page 1	Valve
18	See Page 1	Pressure switch
19	See Page 1	Control Box

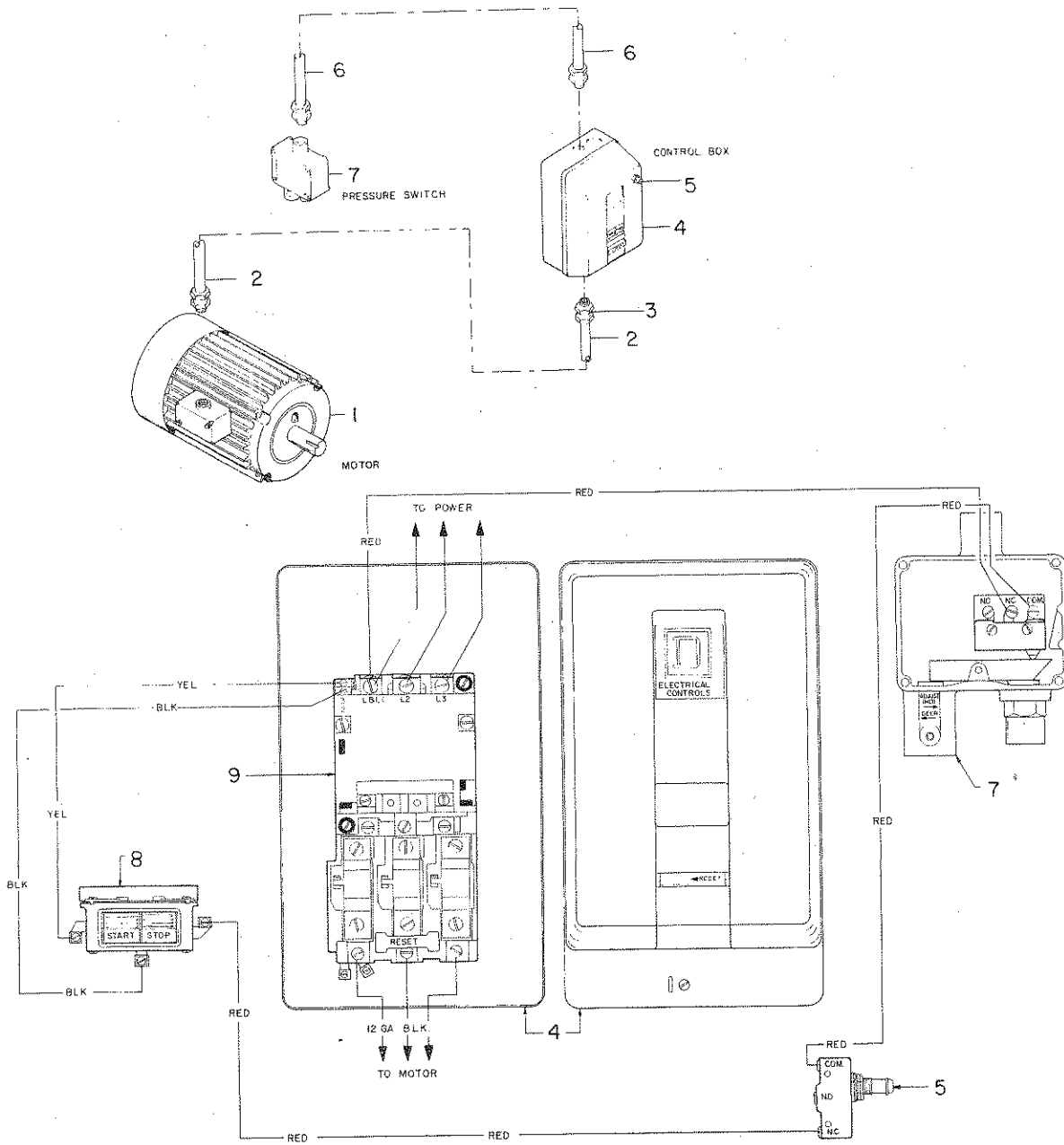
MANUAL CONTROL



USED AFTER
6-1-76

<u>REF. NO.</u>	<u>PART NO.</u>	<u>DESCRIPTION</u>
1	01-443	90° male elobw, 37° JIC flare, 2 used
2	01-261	1/2" rubber hose, 2 used
3	01-576	5 x 36 cylinder
	01-577	Seal kit for 01-576
	01-578	Shaft seal kit for 01-576
		When ordering seal kits, give model and serial number of Baler.
4	01-442	Male connector, 37° JIC flare
5	01-714	Bushing
6	01-265	1/2" rubber hose, 2 used
7	01-534	Valve
8	01-535	Handle for valve
9	F760	Chain link
10	FT530	Breather cap
11		Pin
12	01-717	1/2" plug, 2 used
13	01-725	1/2" steel cross
14	01-720	1/2" x 1-1/2" X heavy nipple, 2 used
15	F6657	5" check valve
16	01-633	Pump
17	01-533	5# check valve, used after 6-1-76
18	F3102	Male connector
19	WB6682	Suction line
20	F6673	90° male elbow, 37° JIC flare
21	FT221	1/4" plastic hose
22	01-450	Male connector
23	01-636	Filter element
24	01-635	Filter
25	01-737	3/4" close X heavy nipple
26	FT219	Male connector, 37° JIC flare
27	ELC-5006	Pressure switch
28	F8209	Male elbow, 2 used
29	WB-6678	Sight gauge
30	WB-6677	Oil tank
31	01-502	1/2" - 65# check valve

MANUAL CONTROL



REF. NO.	PART NO.	DESCRIPTION
1	ELC-10001	5 HP-220V motor
	ELC-10006	5 HP-208V motor
2	ELC-20006	Flex conduit
3	ELC-20004	Flex conduit fitting, 4 used
4	ELC-20005	Control box
5	ELC-5005	Safety switch
6	ELC-20003	Flex conduit
7	ELC-5006	Pressure switch
8	ELC-5007	Start-stop switch
9	ELC-10002	Starter
	ELC-10003	Heater-220V or 208V, 3 used
	ELC-10004	Heater-440V, 3 used
	ELC-10005	Coil-115V

"NOTE"

Parts are identified by reference numbers. See parts list for correct part numbers. DO NOT USE REFERENCE NUMBERS AS PART NUMBERS.

Order by baler serial number and model.

State how to ship: whether by truck, stage, mail, rail, express or freight, air express or air freight.

Claims for shortage or error in handling of an order for parts must be made upon receipt of goods.

Address all orders for parts as follows:

J.A. Freeman & Son, Inc.
Parts Department
2034 N.W. 27th Avenue
Portland, Oregon 97210

Permission must be secured before any parts are returned for credit. When parts are returned, the freight must be prepaid or arrangements made so that they can be brought in by our trucks.

Place serial number of machine here for your convenience:

Baler Serial No. _____

Baler Model _____

POLICY

1. It is the policy of J.A. Freeman & Son, Inc. to constantly improve its products whenever it is practical to do so.
2. J.A. Freeman & Son, Inc. reserve the right to redesign or change its equipment or component parts thereof without incurring any obligation to install or furnish such changes on equipment previously delivered.
3. Unauthorized changes or additions to equipment manufactured by J.A. Freeman & Son, Inc. relieves the company of further responsibility for warranted operation and breakage replacement.

IMPORTANT

Both sides of the plunger guide bars should be kept greased. It is also advisable to grease anyplace where the plunger rides against the ends of the chamber. A little grease placed on the latches once in awhile will also make the latches easier to operate.

INSTRUCTIONS FOR OPERATING THE BALER

1. Place a large piece of material on the bottom of the chamber.
2. Make sure the chamber doors are closed and latched.
3. Fill the chamber with material and close the door.
4. Start the baler on the "Down" cycle.
5. On the manually operated, start the baler on the up cycle. The automatic baler will have already obtained this cycle.
6. Open the loading door and refill chamber with material.
7. Repeat cycles until desired size of bale is obtained.
8. Tie the bale by leaving the plunger down and open the chamber door. Thread wire through and tie bale with four (4) ties or more.

NOTICE

If Baler fails to operate, check the fuses before calling for a service call.