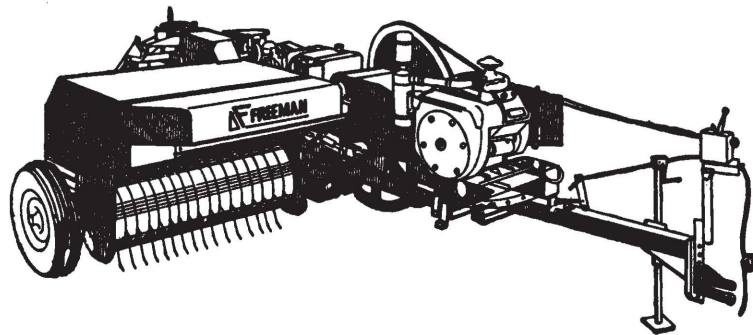


Freeman Automatic Pick-up Baler

1970 PARTS LIST



PULL TYPE
Model 330

manufactured and distributed by

J. A. FREEMAN & SON, INC.

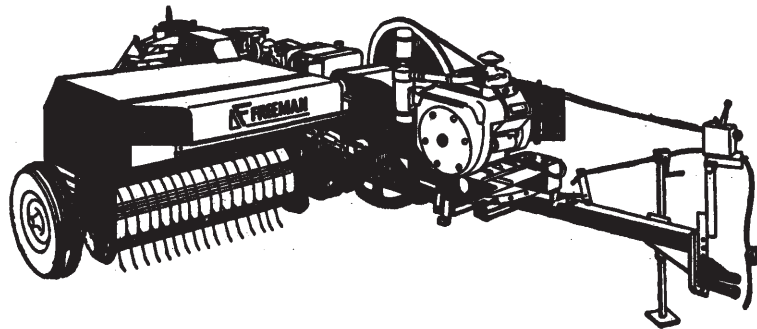
PORTLAND, OREGON

1970

PARTS LIST

for

Model 330



POLICY

1. It is the policy of J. A. Freeman & Son, Inc. to constantly improve its products whenever it is practical to do so.
2. J. A. Freeman & Son, Inc. reserve the right to redesign or change its equipment or component parts thereof without incurring any obligation to install or furnish such changes on equipment previously delivered.
3. Unauthorized changes or additions to equipment manufactured by J. A. Freeman & Son, Inc. relieves the company of further responsibility for warranted operation and breakage replacement.

INSTRUCTIONS FOR ORDERING PARTS

1. Part number and description of part.
 - (a) Parts should NOT be ordered from illustration only.
 - (b) Parts should NOT be ordered from numbers on castings.
2. Order by baler serial number and model.
3. Much delay and confusion can be avoided if parts numbers are arranged in sequence on all orders.
4. State how to ship: whether by truck, stage, mail, rail, express or freight, air express or air freight.
5. Claims for shortage or error in handling of an order for parts must be made upon receipt of goods.
6. Address all orders for parts as follows:

J. A. Freeman & Son, Inc.
Parts Department,
2034 N. W. 27th Avenue,
Portland, Oregon 97210

Place serial number of machine here for your convenience:

Baler Serial No.

Motor Serial No.

Left and right of machine are understood to mean from a position facing in the direction of baler travel.

Permission must be secured before any parts are returned for credit. When parts are returned, the freight must be prepaid or arrangements made so that they can be brought in by our trucks.

"NOTE"

Parts are identified by reference numbers. See parts list for correct part numbers. DO NOT USE REFERENCE NUMBERS AS PART NUMBERS.

Table of Contents

Drawbar and engine mount	1
Flywheel and pinion shaft assembly	2
Bull gear assembly	3
Plunger connecting rod assembly	4
Model 330 plunger	5, 6
Bale chamber	7
Knotter trip assembly	8
Axle assembly	9
Pickup feeder house	10
Pickup cylinder assembly	11
Pickup drive	12
Feed arm drive	13
Feed arm and feed fork	14
Feed arm pivot shaft	15
Knotter brake assembly	16
Wire knotter	17, 18
Wire box and guides	19
Needles and needle yoke	20
Twine knotter, clutch and mounts	21, 22
Twine fingers, drive	23
Twine box & twine guides	24
Bale chute and weight indicator	25
Tension control ram assembly	26
Tension control bypass assembly	27
Tension control pump assembly	28
P.T.O. gear box	29
P.T.O. drive sheave and clutch	30
P.T.O. rear drive line	31
P.T.O. ball slip front drive line	32
Throttle and tension control stand	33
Fuel tank, battery and lights	34
Multi luber centralized lubrication system	35
Extra items	36

INDEX

Part No.	Page No.	Part No.	Page No.	Part No.	Page No.	Part No.	Page No.
F 7 12	F 755	.. 18, 22	F 1004 33	F 1411 29
F 8A 12	F 759 7	F 1005 33	F 1412 29
F 9A 3	F 760 7	F 1006 33	F 1413 29
F 34 2	F 761 7	F 1007 33	F 1414 29
F 55 4	F 765 2	F 1008 33	F 1415 29
F 72 2	F 770 36	F 1011 33	F 1416 29
F 73 2	F 772 6	F 1012 33	F 1417 29
F 83 12	F 773 6	F 1013 33	F 1418 29
F 96 11	F 774 6	F 1014 33	F 1419 29
F 98 11	F 775 6	F 1015 33	F 1420 29
F 99 12	F 776 6	F 1017 33	F 1421 29
F 100 11	F 777	.. 6, 36	F 1018 33	F 1427 15
F 101 11	F 778	... 4, 6	F 1019 33	F 1428 15
F 122 12	F 779 6	F 1020 33	F 1433 33
F 126 12	F 780 6	F 1025 33	F 1436 4
F 129 12	F 781 6	F 1026 33	F 1441	... 4, 6
F 172	.. 17, 20	F 800 36	F 1063 30	F 1450 13
F 183 1	F 802 13	F 1064 31	F 1451 33
F 188 7	F 817 2	F 1065 31	F 1452 33
F 212 9	F 822 14	F 1066 31	F 1497 34
F 213 9	F 837 7	F 1071 13	F 1499 34
F 215 9	F 840 12	F 1076 29	F 1505 34
F 220 7	F 841 7	F 1078 29	F 1511 36
F 221 2	F 853	.. 3, 10	F 1083 29	F 1512 6
F 225 3	F 856	.19,20,24	F 1084 29	F 1513 8
F 226 3	F 857	.19,20,24	F 1085 29	F 1514 8
F 227 6	F 862 34	F 1087 29	F 1515 8
F 246	.16,18,30	F 874 36	F 1093 29	F 1517	. 8,20,23
F 268 25	F 878 1	F 1095 29	F 1527 4
F 278 8	F 883 7	F 1105 31	F 1531 8
F 281 14	F 886 2	F 1129 33	F 1537 6
F 298 6	F 889	.. 31, 32	F 1130 33	F 1548 20
F 299 6	F 890 32	F 1131 33	F 1549 20
F 304 36	F 891 32	F 1132 2	F 1550 20
F 312 3	F 892 32	F 1134 4	F 1551 20
F 318 12	F 893 34	F 1151 7	F 1552 20
F 354 13	F 901 30	F 1153 7	F 1556 14
F 418 12	F 933 4	F 1161 30	F 1557 14
F 440	.. 1,8,18	F 942 36	F 1165 30	F 1558 14
F 452 23	F 946 19	F 1189 14	F 1559 14
F 480 13	F 951 30	F 1193 14	F 1561 14
F 481 13	F 952 30	F 1195 14	F 1563 14
F 482 13	F 954 30	F 1221 30	F 1568 8
F 484 13	F 955 30	F 1222 30	F 1572	. 8,16,23
F 485 13	F 956 30	F 1226 11	F 1574 20
F 486 13	F 958 30	F 1235 14	F 1576 18
F 497 7	F 959 30	F 1239 15	F 1579 8
F 498 2	F 960 30	F 1244 15	F 1581 7
F 525 24	F 961 30	F 1245 15	F 1586 1
F 600	... 7, 9	F 962 30	F 1246 15	F 1589 7
F 635 36	F 963 30	F 1247 15	F 1601 29
F 636 36	F 967 2	F 1248 15	F 1603 14
F 637 36	F 967A 2	F 1250 15	F 1605 1
F 638 36	F 967B 2	F 1251 15	F 1607 1
F 649 36	F 979 6	F 1256 3	F 1609 6
F 657 22	F 985 25	F 1259 13	F 1611 20
F 658 22	F 986 6	F 1260 13	F 1613 2
F 659 22	F 987 25	F 1261 13	F 1614 2
F 664 36	F 988 25	F 1264 12	F 1617 8
F 669 12	F 990 25	F 1267 3	F 1618 8
F 671 12	F 993 25	F 1290 23	F 1619 8
F 672 12	F 994 25	F 1306 13	F 1620	.. 18, 22
F 698 2	F 995 25	F 1385 13	F 1622	.. 18, 22
F 734 36	F 997 25	F 1386 13	F 1623	.. 18, 22
F 735 36	F 998 25	F 1392 7	F 1629 6
F 736 36	F 999 25	F 1407 29	F 1632 8
F 751 6	F 1002 33	F 1409 29	F 1633	.. 18, 22
F 753 3	F 1003 33	F 1410 29	F 1634 14

INDEX

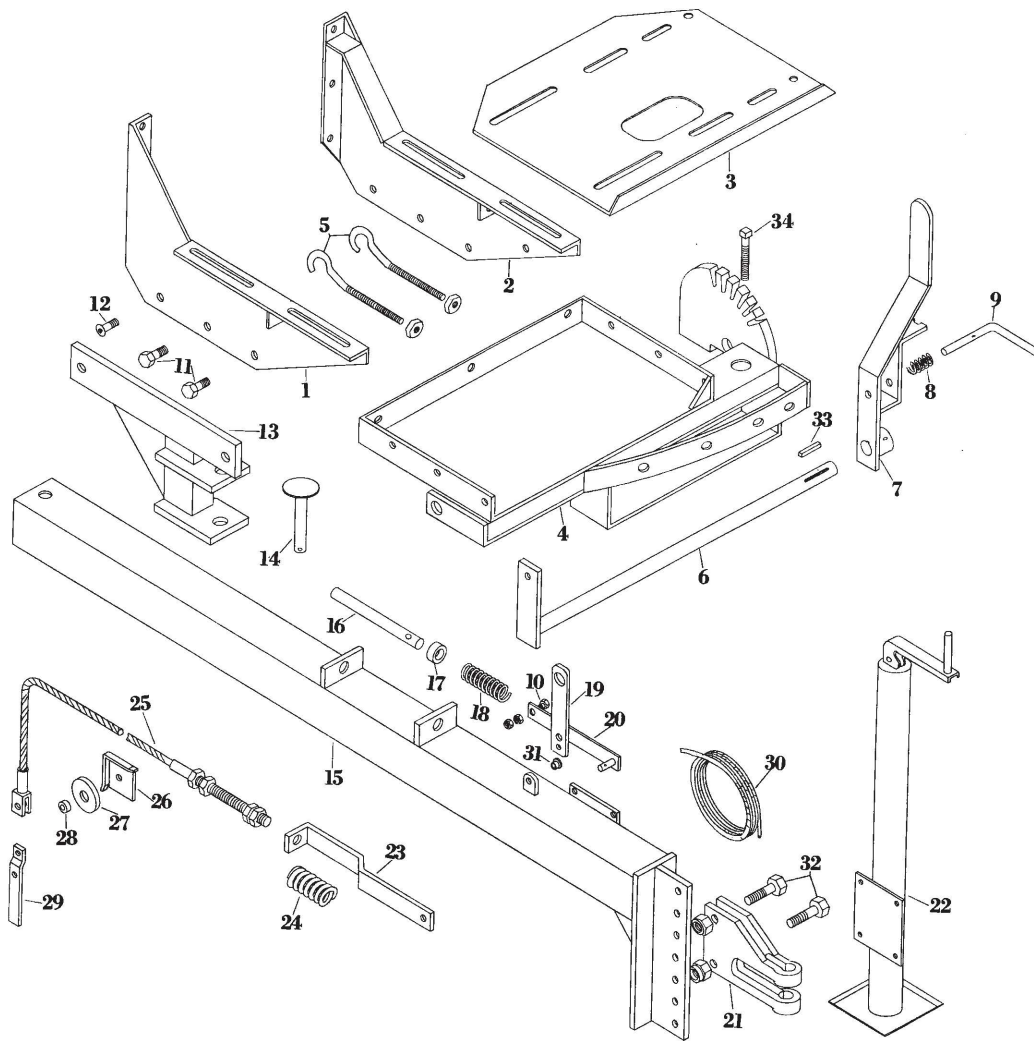
Part No.	Page No.	Part No.	Page No.	Part No.	Page No.	Part No.	Page No.
F 1635	14	F 1783	35	F 7035	3	F 7283	1
F 1636	6	F 1784	35	F 7036	3	F 7299	10
F 1638	25	F 4014	19, 20	F 7037	3	F 7312	17
F 1639	25	F 4015	19, 20	F 7038	3	F 7313	17
F 1643	14	F 4016	20	F 7039	3	F 7318	17
F 1648	14	F 4024	17	F 7040	3	F 7329	17
F 1649	14	F 4030	18	F 7046	34	F 7330	17
F 1658	33	F 4046	17	F 7049	34	F 7337	2
F 1661	3, 15	F 4050	14	F 7051	12	F 7345	18
F 1662	7	F 4067	19, 25	F 7052	12	F 7346	18
F 1673	14	F 4068	19, 25	F 7053	12	F 7349	18
F 1675	36	F 4069	19	F 7055	7	F 7354	3
F 1676	36	F 4104	22	F 7056	7	F 7355	11
F 1677	36	F 4115	18, 22	F 7062	17	F 7356	11
F 1680	22	F 4133	18, 22	F 7063	18, 22	F 7358	3
F 1686	8	F 4134	18, 22	F 7064	17	F 7361	31
F 1687	8	F 4135	18, 22	F 7065	17	F 7363	1
F 1688	34	F 4136	12, 18, 22	F 7069	18	F 7368	31
F 1689	34	F 4137	18	F 7072	18	F 7369	31
F 1691	34	F 4138	18	F 7075	17	F 7370	31
F 1697	36	F 4150	20	F 7076	17, 18	F 7371	31
F 1699	36	F 4159	18, 22	F 7077	17	F 7372	31
F 1700	22	F 4160	18, 22	F 7078	17	F 7377	31
F 1701	20	F 4161	18, 22	F 7079	17	F 7382	11
F 1702	20	F 4163	19	F 7081	17	F 7391	36
F 1717	11	F 4190	19	F 7084	17	F 7394	10
F 1720	29	F 4191	19	F 7085	17	F 7397	7
F 1721	2	F 4193	36	F 7086	17	F 7418	4
F 1727	31, 32	F 4203	19	F 7087	17	F 7430	1
F 1728	32	F 4204	19	F 7089	17	F 7431	18
F 1736	34	F 4205	19	F 7121	7	F 7432	18
F 1743	32	F 4210	19	F 7127	10	F 7437	2
F 1744	32	F 4222	19	F 7142	10	F 7438	3
F 1745	32	F 4223	19	F 7143	10	F 7439	6
F 1746	32	F 4224	19	F 7145	10	F 7448	16
F 1747	32	F 4225	19	F 7146	11	F 7449	16
F 1749	32	F 5080	33	F 7148	11	F 7450	16
F 1751	32	F 5159	19	F 7149	11	F 7451	16
F 1752	32	F 5232	34	F 7151	11	F 7452	16
F 1753	32	F 5233	34	F 7152	10	F 7453	16
F 1754	32	F 5445	15	F 7154	11	F 7454	16
F 1755	32	F 5446	15	F 7156	11	F 7456	18
F 1756	32	F 5499	34	F 7157	10	F 7461	18
F 1757	32	F 5533	9	F 7158	10	F 7462	3
F 1758	32	F 5545	33	F 7159	10	F 7463	3
F 1759	32	F 5554	33	F 7160	10	F 7472	10
F 1760	35	F 5559	33	F 7163	10	F 7482	10
F 1761	35	F 5842	34	F 7164	10	F 7488	2
F 1762	35	F 5941	34	F 7166	10	F 7507	7
F 1763	35	F 5922	36	F 7176	11	F 7515	19
F 1764	35	F 6317	24	F 7177	11	F 7517	10
F 1765	35	F 6318	24	F 7180	11	F 7519	18, 22
F 1766	35	F 7000	2	F 7186	11	F 7521	20
F 1767	35	F 7001	1	F 7187	11	F 7522	20
F 1768	35	F 7002	1	F 7190	11	F 7523	20
F 1769	35	F 7003	1	F 7193	11	F 7524	20
F 1770	35	F 7004	1	F 7194	1, 11	F 7526	20
F 1771	35	F 7005	1	F 7210	2	F 7527	20
F 1772	35	F 7006	1	F 7212	34	F 7528	16
F 1773	35	F 7007	1	F 7213	1	F 7529	14
F 1774	35	F 7010	1	F 7227	8, 17	F 7532	14
F 1776	35	F 7014	2	F 7236	25	F 7533	14
F 1777	34	F 7015	2	F 7239	3, 14	F 7534	14
F 1778	29	F 7016	2	F 7247	18	F 7535	12
F 1779	29	F 7031	3	F 7248	17	F 7537	1
F 1780	29	F 7032	3	F 7257	18	F 7538	1
F 1781	29	F 7033	3	F 7275	14	F 7539	1
F 1782	35	F 7034	3	F 7276	14	F 7540	1

INDEX

Part No.	Page No.	Part No.	Page No.	Part No.	Page No.	Part No.	Page No.
F 7541	...1, 24	F 7643 19	F 7800 1	F 7938 24
F 7542 4	F 7644 19	F 7812 6	F 7939 24
F 7543 4	F 7645 19	F 7813 6	F 7940 22
F 7544 4	F 7651 4	F 7816 6	F 7942 22
F 7545 4	F 7652 20	F 7818 6	F 7943 22
F 7546 12	F 7653 4	F 7819 6	F 7947 22
F 7547 20	F 7654 10	F 7822 6	F 7948 22
F 7548 3	F 7655 25	F 7823 6	F 7949 22
F 7550 3	F 7656 25	F 7824 6	F 7951 22
F 7551 10	F 7657 25	F 7825 6	F 7952 22
F 7552 20	F 7658 25	F 7826 6	F 7953 22
F 7554 20	F 7659 25	F 7827 7	F 7956 23
F 7555	.. 19, 24	F 7660 14	F 7828 7	F 7957 23
F 7556	.. 19, 24	F 7661 25	F 7829 12	F 7958 23
F 7557 19	F 7668 7	F 7845 20	F 7959 23
F 7559 16	F 7670 7	F 7848 1	F 7960 23
F 7560 16	F 7671 35	F 7849 1	F 7961 6
F 7561 16	F 7673 36	F 7859 22	F 7962 6
F 7565 1	F 7676 36	F 7860 22	F 7963 6
F 7566 1	F 7677 36	F 7861 22	F 7964 6
F 7567 1	F 7692 31	F 7867 22	F 7966 14
F 7568 20	F 7696 1	F 7868 22	F 7967 14
F 7569 20	F 7699 2	F 7869 22	F 7968 14
F 7570 18	F 7704 2	F 7870 22	F 7969 14
F 7571 18	F 7705 19	F 7871 22	F 7970 14
F 7572 11	F 7706 12	F 7872 22	F 7971 14
F 7573 11	F 7707 1	F 7873 22	F 7972 20
F 7577 14	F 7711 20	F 7874 22	F 7973	.. 20, 24
F 7578 13	F 7713 10	F 7875 22	F 7976 22
F 7579 10	F 7714 10	F 7876 22	F 7977 22
F 7583 11	F 7721 36	F 7882 22	F 7978 22
F 7584 11	F 7722 36	F 7883 22	F 7979 31
F 7585 16	F 7723 36	F 7884 22	F 7980 18
F 7586 16	F 7724 32	F 7889 24	F 7985 24
F 7587 16	F 7725 1	F 7890 24	F 7986 22
F 7588 20	F 7727 36	F 7891 24	F 7987	.. 18, 22
F 7590 1	F 7729 36	F 7892 22	F 7989 9
F 7591 1	F 7730 11	F 7893 22	F 7990 9
F 7592 1	F 7731 11	F 7898 24	F 7991 9
F 7597 11	F 7732 11	F 7903 20	F 7992 9
F 7598 11	F 7734 11	F 7904	.. 16, 22	F 7993 9
F 7599 11	F 7735	...6, 36	F 7910 32	F 7994 9
F 7600 25	F 7737 2	F 7911 7	F 7995 9
F 7603 13	F 7741 11	F 7913 7	F 7996 9
F 7604 14	F 7742 34	F 7914 4	F 7997 9
F 7605 14	F 7743 34	F 7915 4	F 7998 9
F 7606 14	F 7746 7	F 7916 4	F 7999 9
F 7607 14	F 7750 9	F 7917 4	F 8000 9
F 7608 19	F 7756 9	F 7918 4	F 8001 9
F 7609 36	F 7757 9	F 7919 4	F 8002 9
F 7610 14	F 7758 9	F 7920 4	F 8003 9
F 7611 4	F 7760 11	F 7921 4	F 8004 9
F 7612 13	F 7761 6	F 7922 4	F 8005 9
F 7617 36	F 7762 6	F 7923 4	F 8006 9
F 7624 25	F 7763 6	F 7924 4	F 8007 9
F 7626 36	F 7764 6	F 7925 4	F 8008 9
F 7627 3	F 7765 6	F 7926 4	F 8009 9
F 7629 3	F 7766 6	F 7927 24	F 8010 9
F 7631 3	F 7767 6	F 7928 24	F 8011 9
F 7633 10	F 7789 10	F 7929 24	F 8012 9
F 7634 10	F 7792 17	F 7930 24	F 8013 9
F 7635 10	F 7793 17	F 7931 24	F 8014 9
F 7637 19	F 7794 17	F 7932 24	F 8015 9
F 7638 19	F 7795 1	F 7933 24	F 8016 9
F 7639 19	F 7796 17	F 7934 24	F 8018 9
F 7640 19	F 7797 7	F 7935 24	F 8019 9
F 7641 19	F 7798 7	F 7936 24	F 8020 9
F 7642 19	F 7799 1	F 7937 24	F 8021 9

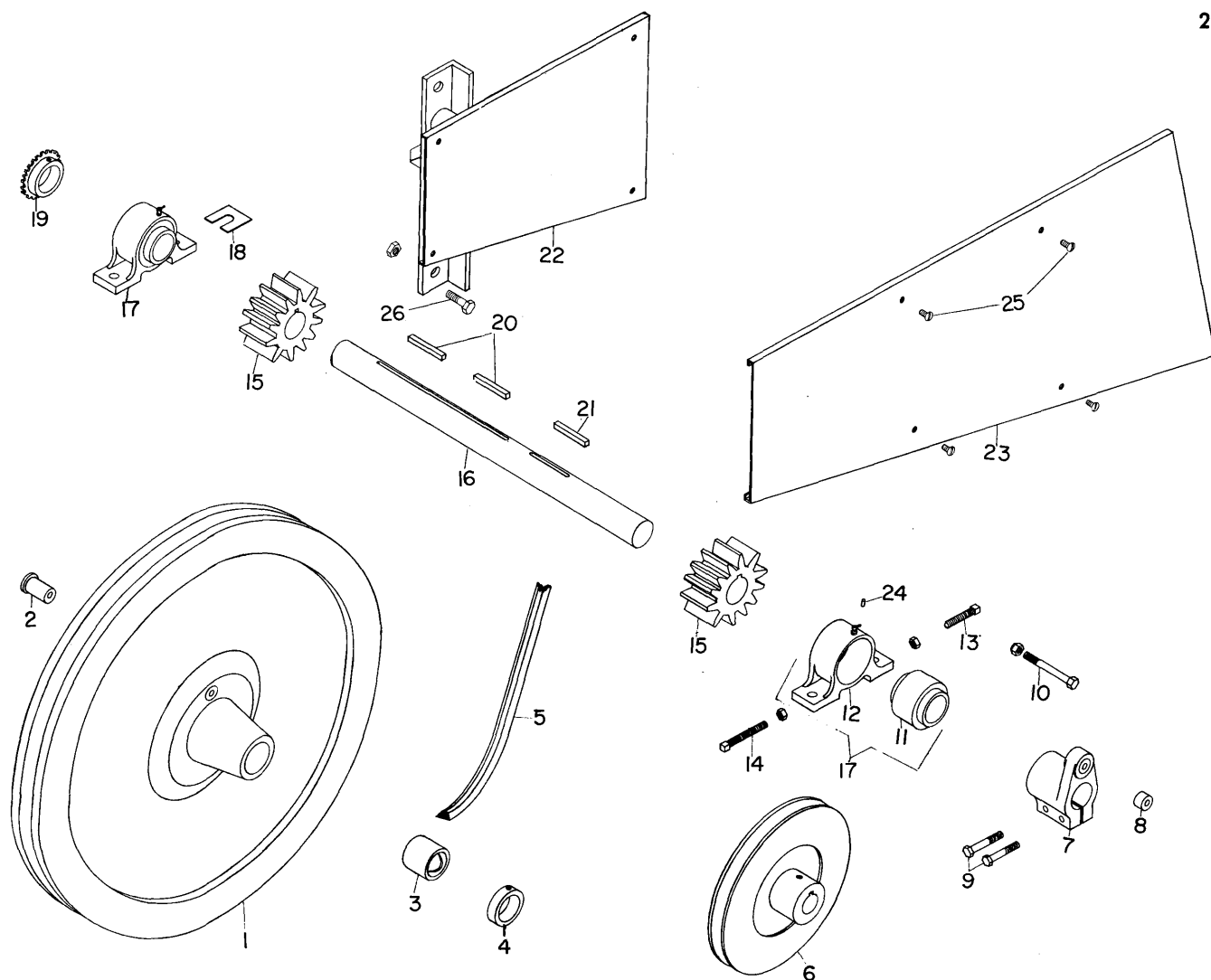
INDEX

Page No.	Part No.	Part No.	Page No.	Page No.	Part No.	Part No.	Page No.
F 8022 8	F 8061 34	FT 107	.26,27,28	FT 506 28
F 8023 8	F 8062 34	FT 113 28	FT 507 28
F 8024 13	F 8063 34	FT 114 28	FT 508 28
F 8025 13	F 8064 24	FT 123 27	FT 509 28
F 8026 13	F 8067 34	FT 136	.. 26, 27	FT 510 28
F 8027 13	FT 10 26	FT 137 26	FT 511 28
F 8028 9	FT 11 26	FT 150	.. 27, 28	FT 512 28
F 8029 9	FT 12 26	FT 157	.. 2, 28	FT 513 28
F 8030 9	FT 13 26	FT 163 26	FT 514 28
F 8031 22	FT 14 26	FT 177 27	FT 517 28
F 8032 22	FT 15 26	FT 178 27	FT 518 28
F 8033 23	FT 16 26	FT 179 27	FT 519 28
F 8041 31	FT 18	.. 26, 28	FT 181 26	FT 521 28
F 8042 31	FT 19 26	FT 183 26	FT 523 28
F 8043 31	FT 25 30	FT 184 27	FT 524 28
F 8044 31	FT 50 27	FT 185 27	FT 525 28
F 8045 31	FT 53 27	FT 187	.. 27, 28	FT 527 28
F 8046 31	FT 54 27	FT 188 27	FT 528 28
F 8047 31	FT 55 27	FT 191	.. 27, 28	FT 529 28
F 8048 31	FT 58 27	FT 192 27	FT 530 28
F 8049 22	FT 61 27	FT 193	.. 27, 28	FT 533 28
F 8050 22	FT 62 27	FT 194 27	FT 534 28
F 8051 22	FT 63 27	FT 197 28	FT 535 28
F 8052 22	FT 67 27	FT 198 26	FT 536 28
F 8053 22	FT 68 27	FT 209 27	FT 537 28
F 8054 22	FT 72 27	FT 210 27	FT 538 28
F 8055 4	FT 73 26	FT 211 27	FT 539 28
F 8056 6	FT 74	.26,27,36	FT 213 27	FT 541 28
F 8057 6	FT 75 26	FT 500 28	FT 542 28
F 8058 6	FT 82 28	FT 503 28		
F 8059 34	FT 87 27	FT 504 28		
F 8060 34	FT 101 28	FT 505 28		



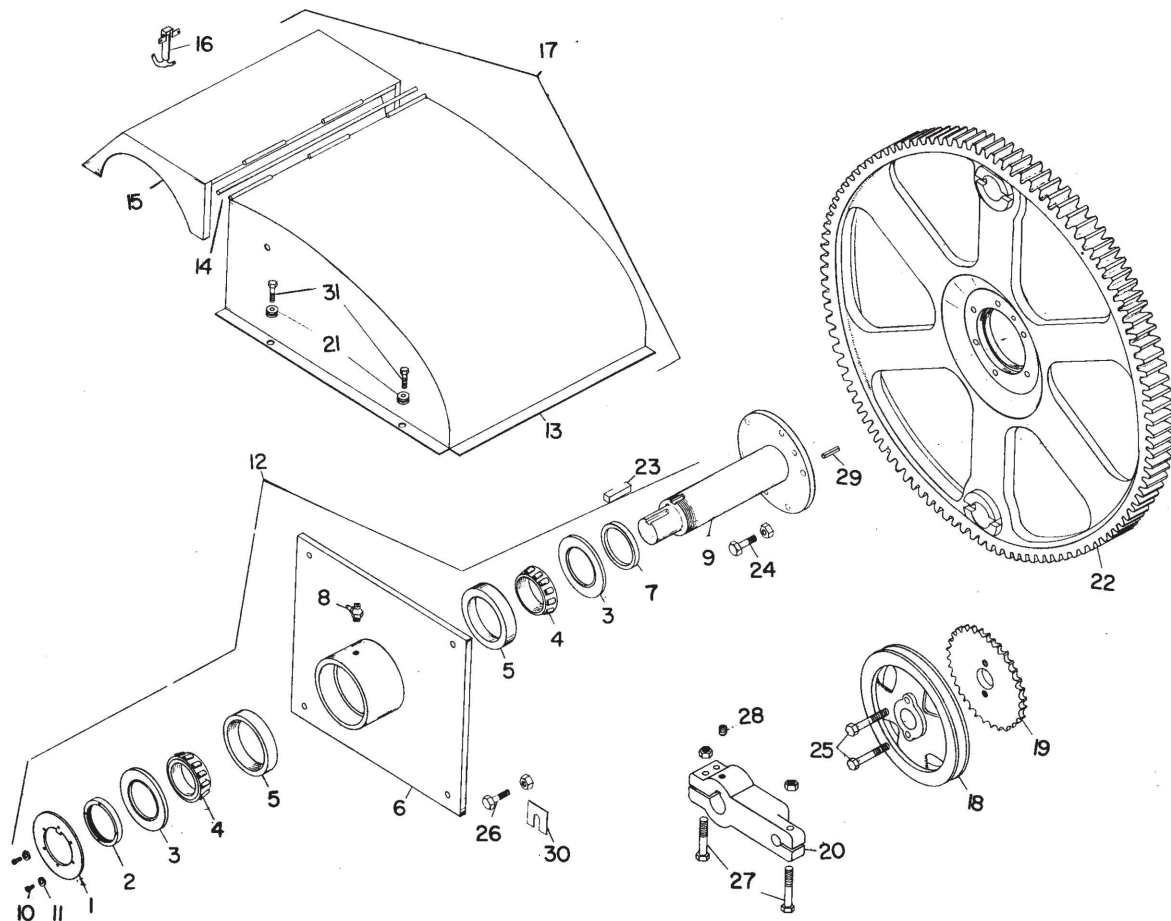
DRAWBAR AND ENGINE MOUNT

REF. NO.	PART NO.	DESCRIPTION	REF. NO.	PART NO.	DESCRIPTION
1	F 7799	Engine mount, R.H.	19	F 7283	Actuating lever, drawbar locking pin
	F 7848	PTO Gear box mount, R.H.	20	F 7795	Link, drawbar locking pin
2	F 7800	Engine mount, L.H.	21	F 183	Front end hitch
	F 7849	PTO Gear box mount, L.H.	22	F 7430	Front end jack complete for engine balers
3	F 7707	Engine base plate		F 1586	Front end jack complete for PTO balers
	F 7363	PTO Gear box plate		F 878	Jack handle assembly
4	F 7537	Hitch base plate with pickup quadrant		F 1605	Ram only for jack
	F 7213	Hitch base plate, PTO		F 1607	Thrust bearing for jack
5	F 7010	Engine adjusting bolt (2 Used)	23	F 7567	Cable connecting link for cushion spring
6	F 7538	Pickup lift lever cross rod	24	F 7566	Cushion spring (pickup cable)
7	F 7539	Pickup lift lever	25	F 7565	Pickup lift cable with ends
	F 7725	PTO pickup lift lever	26	F 7590	Sheave clip, pickup lift roller
8	F 7541	Spring for F 7540 pin	27	F 7591	Roller for pickup lift
9	F 7540	Pickup lift lever adjusting pin	28	F 7592	Bushing for F 7591 roller
10		1/2" x 2" N.C. Cap screw	29	F 7194	Pickup lift bracket
11		1/2" x 1-1/4" N.F. Cap screw	30	F 7005	Rope, drawbar pin, 9'
12		1/2" x 1-1/4" Button head bolt	31	F 440	Ferrule for F 7283 lever
13	F 7007	Pivot pin bracket	32		5/8" x 2-1/2" N.C. Cap screw
14	F 7006	Drawbar pivot pin	33		1/4" x 1/4" x 2-1/2" Key
15	F 7001	Drawbar for engine baler	34		1/2" x 4" Square head set screw
	F 7696	Drawbar for PTO baler			
16	F 7002	Drawbar locking pin			
17	F 7004	Set collar, drawbar locking pin			
18	F 7003	Spring, drawbar locking pin			



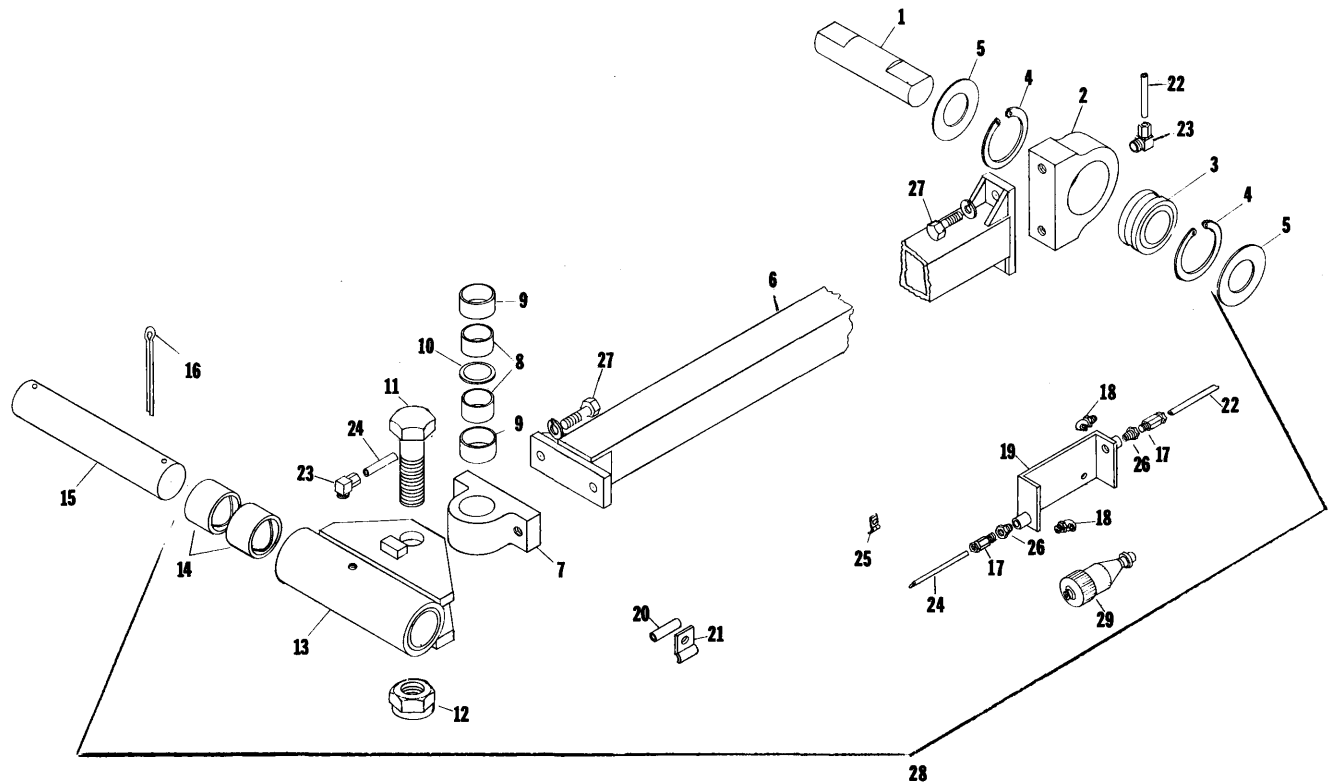
FLYWHEEL AND PINION SHAFT ASSEMBLY

REF. NO.	PART NO.	DESCRIPTION	REF. NO.	PART NO.	DESCRIPTION
1	F 7704	Flywheel with bushings, motor drive	11	F 698	Bearing insert for F 765 cage
	F 1613	Flywheel with bushings, PTO drive	12	F 765	Bearing cage for F 34 bearing
2	F 1614	Shear bushing in flywheel, flanged	13	F 498	Set screw for F 34 bearings, rear, 1/2" x 2" (2 used)
3	F 886	Bushing for F 7704 and F 1613 flywheel	14	F 73	Set screw for F 34 bearings, front, 1/2" x 4" (2 used)
4	F 221	Set collar, pinion shaft, 2-1/8"	15	F 7437	Pinion gear, 12 tooth
5	F 7000	Drive belt, D-165, for VG4D and V461D engine	16	F 7210	Pinion shaft
	F 7337	Drive belt, D-162, for PTO	17	F 34	Bearing complete for pinion shaft, (2 used)
6	F 7014	Motor pulley 10" OD for VG4D 1-7/16" bore	18	F 967	Shim for F34 bearing, 16 ga.
	F 7699	Motor pulley, 10" OD for V461D 1-3/4" bore		F 967A	Shim for F34 bearing, 20 ga.
7	F 817	Shear hub for flywheel		F 967B	Shim for F34 bearing, 10 ga.
8	F 1132	Shear bushing in flywheel shear hubs	19	FT 157	Sprocket, drive for hydraulic pump
9		1/2" x 3-1/4" heat treated cap screws with lock nuts	20	F 7488	Tapered key for pinions, 3-1/2" (2 used)
10	F 7015	Shear bolt, 1/2" x 5" N.C. grade 2 bright cap screw	21	F 72	Key for shear hub, 1/2" x 1/2" x 3-1/2"
			22	F 7737	Bracket, drive belt shield with battery box
			23	F 7016	Drive belt shield
			24	F 1721	Lock pin for F 698 bearing insert
			25		1/4" x 3/4" round head machine screw
			26		1/2" x 1-1/2" NC Cap screw
			27		5/8" x 2-1/4" NC Cap screw



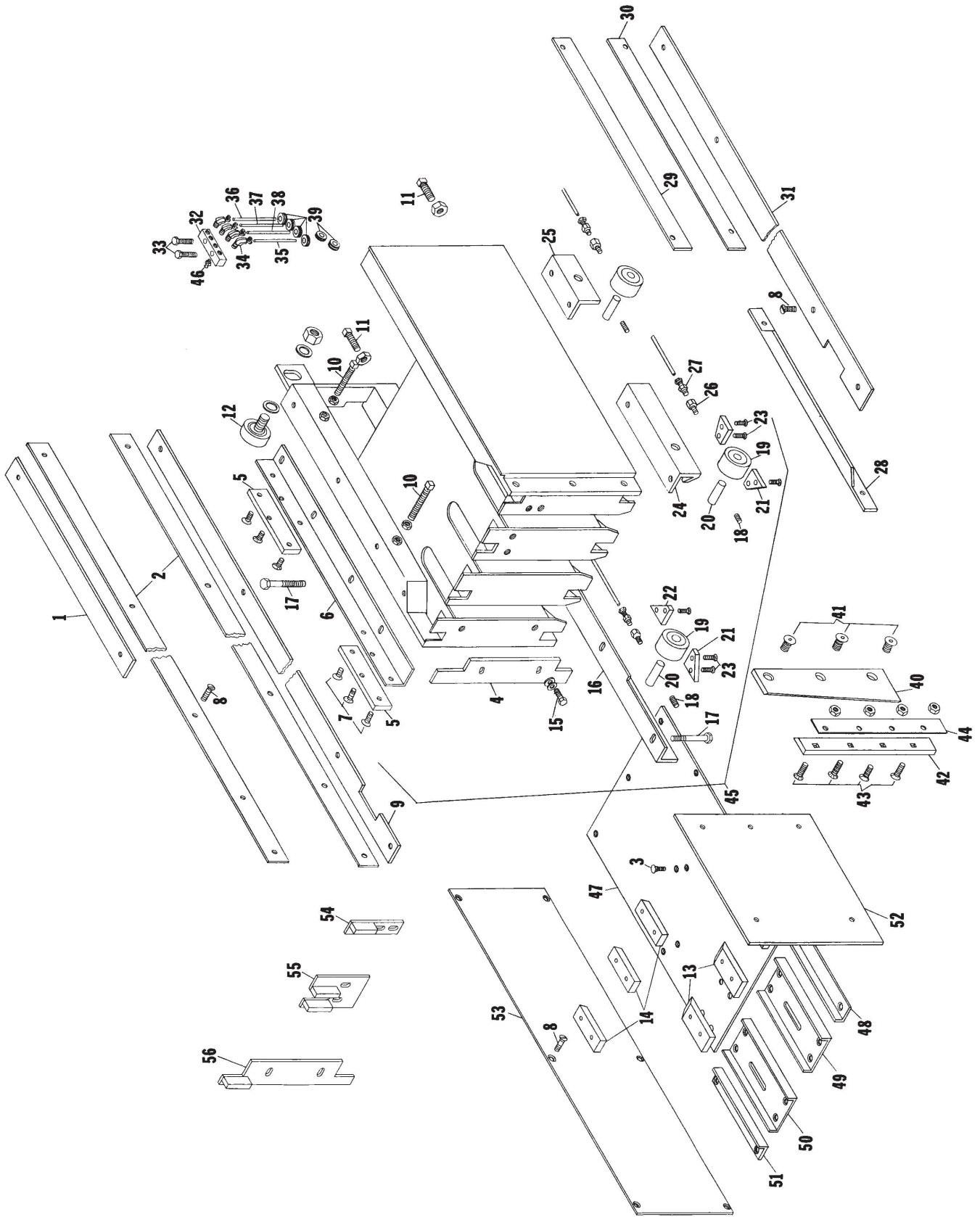
BULLGEAR ASSEMBLY

REF. NO.	PART NO.	DESCRIPTION	REF. NO.	PART NO.	DESCRIPTION
1	F 7038	Locking washer	15	F 7631	Bullgear shield access door
2	F 7037	Adjusting nut for side plate bearing	16	F 853	Catch for bullgear shield
3	F 7035	Seal for side plate, #255833 (4 used)	17	F 7548	Bullgear shield complete with door
4	F 7033	Bearing for side plate, #33287 (4 used)	18	F 9A	Sheave, pickup drive
5	F 7034	Bearing cup for side plate, #33462 (4 used)	19	F 753	Sprocket, knotter drive (32T #60)
6	F 7354	Side plate, R.H. with bearing cups	20	F 1256	Crank arm
	F 7462	Side plate, L.H. with bearing cups	21	F 7550	Rubber grommet (4 used)
	F 7036	Seal race	22	F 7438	Bullgear, 88 tooth (2 used)
7	F 7036	Seal race	23	F 225	Key, knotter drive shaft, 1/2" x 1/2" x 2"
8	F 1661	Hydraulic shut-off fitting		F 226	Key, feed arm drive shaft, 1/2" x 1/2" x 2-1/4"
9	F 7031	Shaft, feed fork drive	24		1/2" x 2-1/4" N.C. Cap screw
	F 7032	Shaft, knotter drive	25		1/2" x 2-3/4" N.C. Cap screw
10	F 7039	Screw for locking washer, 8-32 x 1/2" H.H. Cap Screw (4 used)	26		5/8" x 2" N.F. Cap screw
11	F 7040	Lock washer for F 7039 screw, # 8 medium (4 used)			5/8" x 3" N.F. Cap screw
12	F 7358	Side plate, R.H. w/bearing and shaft, incl. Ref. 1-11	27	F 312	1/2" x 3-1/4" N.F.H.T. Cap screw w/fiber lock nuts
	F 7463	Side plate, L.H. w/bearing and shaft, incl. Ref. 1-11	28		1/2" x 1/2" Hollow head set screw, (3 used)
13	F 7627	Bullgear shield less access door	29	F 7239	Roll pin, 3/8" x 1-1/2" for bullgear
14	F 7629	Bullgear shield hinge pin	30	F 1267	Shim for aligning side plate
			31		1/4" x 1-1/4" N.C. Cap screw (4 used)



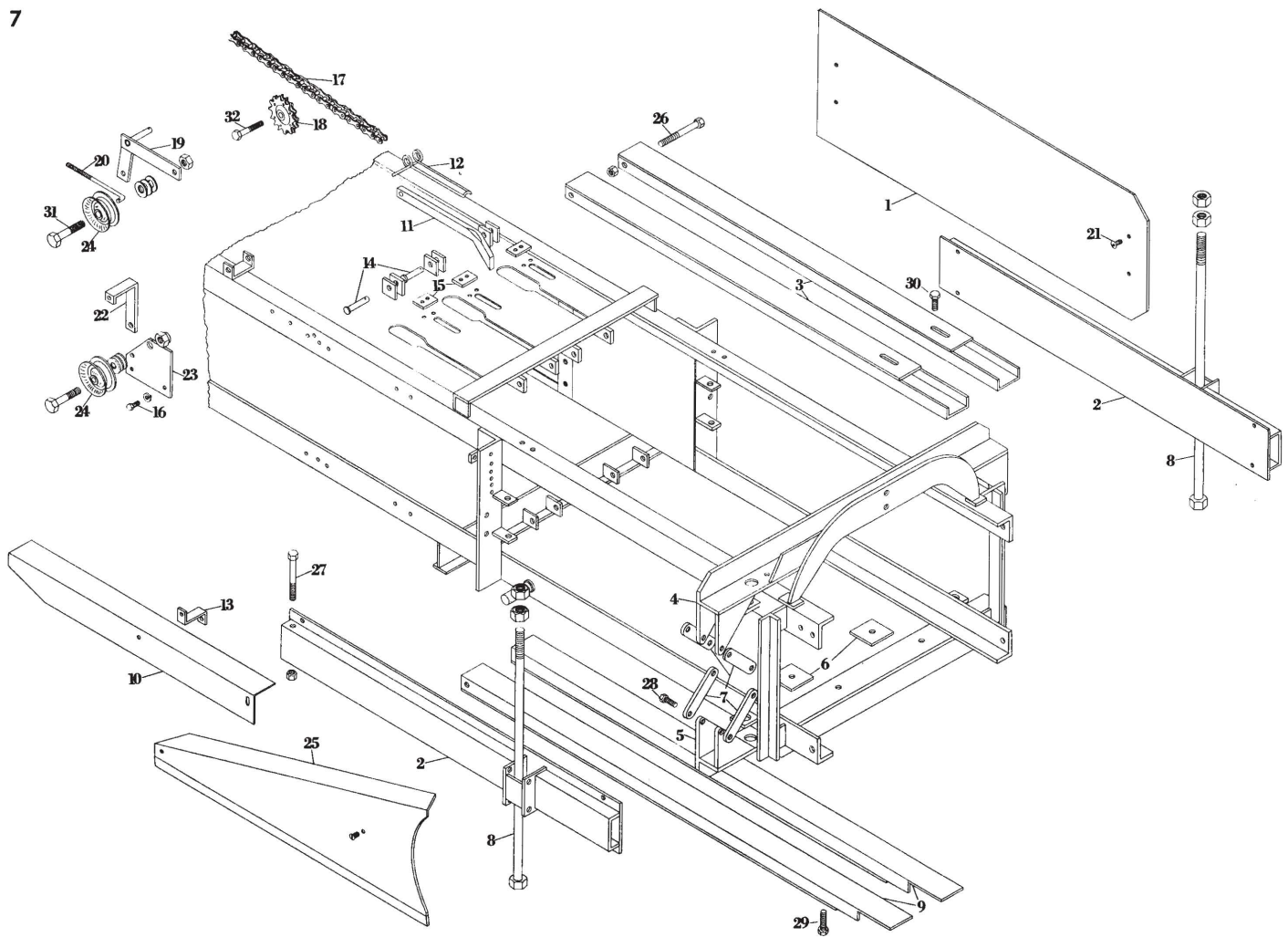
PLUNGER CONNECTING ROD ASSEMBLY

REF. NO.	PART NO.	DESCRIPTION	REF. NO.	PART NO.	DESCRIPTION
1	F 7914	Plunger pin	15	F 1134	Crank pin, gear end, 22" chamber
2	F 7915	Conn rod end housing, plunger end, complete w/bearing	16	F 55	Key for crank pin (2 used)
3	F 7916	Bearing for F 7915 housing	17	F 778	Connector, grease tubes, #308808
4	F 7917	Snap ring		F 8055	Steel sleeve for F778 & F1441, # 31226
5		Washer, 1-3/4" x 2-1/2", 10 ga. machine bushing	18	F 7651	Grease fitting on conn rod (2 used)
		Washer, 1-3/4" x 2-1/2", 14 ga. machine bushing	19	F 7542	Bracket for grease tubes on conn rod
		Washer, 1-3/4" x 2-1/2", 18 ga. machine bushing	20	F 933	Protector tube for grease tube
6	F 7918	Connecting rod	21	F 1436	Clip for grease tube protector
7	F 7919	Conn rod swivel end	22	F 7545	Grease tube, 1/4", plunger pin to F 7542 bracket, 7"
8	F 7920	Inner race, conn rod swivel end	23	F 1441	Elbow for conn rod grease tube, Imp. 889L (2 used)
9	F 7921	Steel bushing, conn rod swivel end	24	F 7544	Grease tube, 1/4" crank pin to F 7542 bracket, 36"
10	F 7922	Spacer washer	25	F 7653	Clip for grease tube
11	F 7923	Pivot pin for swivel end	26	F 7418	1/4" x 1/8" pipe reducer bushing
12	F 7924	1-1/4" NF elastic stop jam nut	27		1/2" x 1-3/4" NC grade 8 cap screw
13	F 7925	Conn rod end housing, bull gear end complete w/bushings, 22" chamber	28	F 7926	Conn rod complete with ends
14	F 1527	Bushing for F 7925 conn rod end	29	F 7543	Spring loaded grease cup
				F 7611	Conn rod ends greasing kit including Ref. Nos. 17 to 26



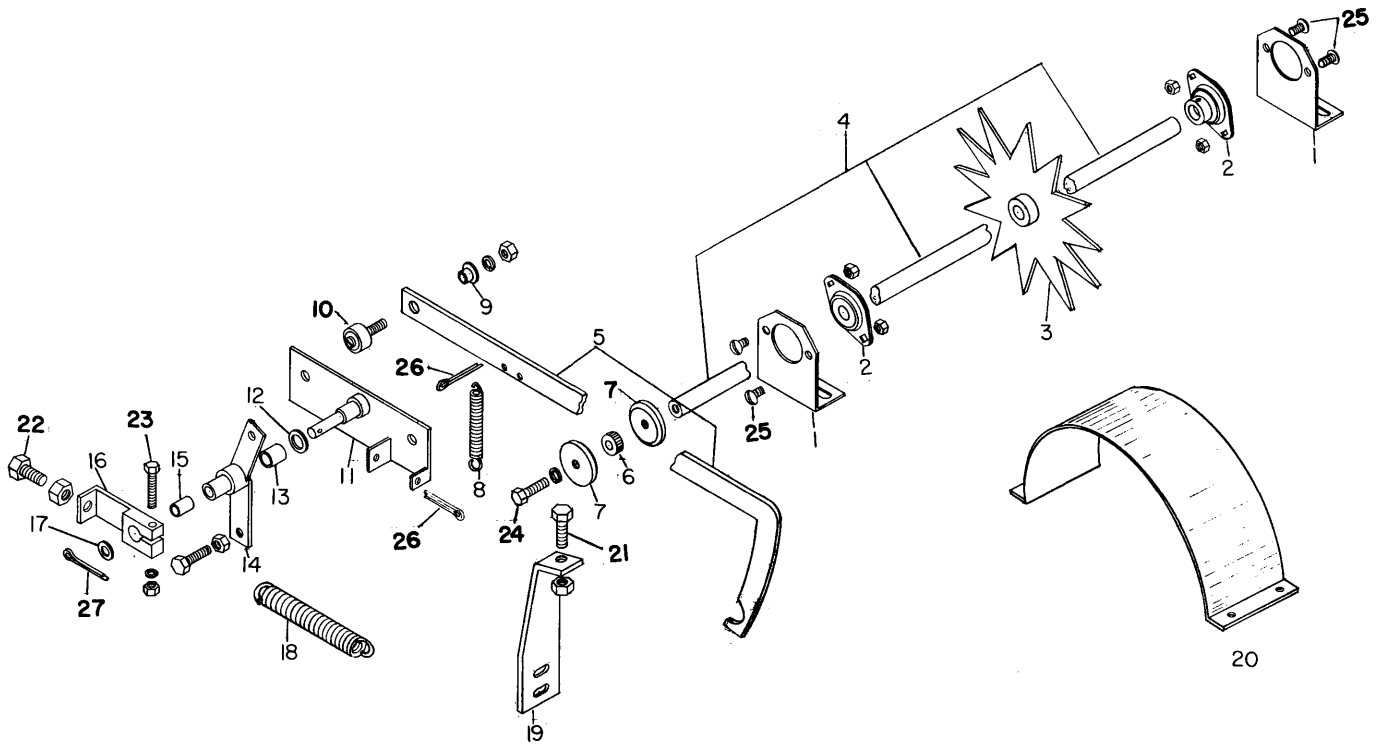
PLUNGER ASSEMBLY

REF. NO.	PART NO.	DESCRIPTION
1	F 7765	Plunger roller rail, top L.H.
2	F 7763	Plunger guide rail, top & bottom
3		3/8" x 1-1/4" #3 plow bolt
		3/8" x 1-1/2" #3 plow bolt
4	F 7963	Adjusting pad for plunger face, left side, 16" x 22" chamber
	F 7964	Adjusting pad for plunger face, left side, 17" x 22" chamber
5	F 1537	Hard slide for roller plunger (4 used)
6	F 7766	Hard slide mounting rail, L.H. top
7		5/16" x 1/2" FH machine screw (12 used)
8		5/16" x 1" FH machine screw for plunger rail
		5/16" x 1-1/2" FH machine screw for plunger rail
9	F 7762	Plunger roller rail, L.H. bottom
10		1/2" x 4" square head set screw, top rail (2 used)
		1/2" x 2-1/2" square head set screw, bottom rail (2 used)
11		3/4" x 1-3/4" square head set screw (2 used) plunger pin lock
12	F 1636	Roller for top of plunger
13	F 7822	Wire and twine track block, bottom
14	F 7823	Wire and twine track block, top
15		3/8" x 1" NC cap screw (3 used)
16	F 7761	Roller & slide mounting angle, L.H. bottom
17		3/8" x 3-3/4" NC cap screw (12 used)
18		1/4" x 3/8" Allen head set screw (4 used)
19	F 775	Roller for plunger (4 used)
20	F 776	Pin, plunger roller (4 used)
21	F 986	Wiper, rear (2 used)
22	F 774	Wiper, front (2 used)
23		1/4" x 1" FH machine screw (8 used)
24	F 773	Roller mounting angle, R.H. rear
25	F 772	Roller mounting angle, R.H. front
26	F 777	Adapter for grease tube (4 used)
27	F 778	Connector for grease tube (4 used)
28	F 7439	Knife guide under feed opening
29	F 299	Plunger slide, flat, upper R.H. side
30	F 298	Plunger slide, flat, lower R.H. side
31	F 7767	Plunger roller rail, R.H. bottom
32	F 979	Manifold for grease tubes
33		5/16" x 1-3/4" NC cap screw (2 used)
34	F 1441	Elbow grease tube (4 used)
35	F 780	Grease tube, right rear, 36"
36	F 781	Grease tube, left front, 14"
37	F 779	Grease tube, left rear, 30"
38	F 779	Grease tube, right front, 39"
39	F 7735	Grommet, grease tube protector (6 used)
40	F 7764	Plunger knife
41	F 227	Bolt for plunger knife (3 used)
42	F 1609	Knife, stationary with square holes
43	F 1629	Bolt for F 1609 knife (4 used)
44	F 751	Shim for F 1609 knife, 14 ga.
	F 1512	Shim for F 1609 knife, 20 ga.
45	F 7961	Plunger complete, less knife, 16" x 22" chamber
	F 7962	Plunger complete, less knife, 17" x 22" chamber
46		1/8" P.T. grease fitting
47	F 7824	Bale chamber bottom
48	F 7813	Liner ext. for bale chamber bottom, R.H.
49	F 7816	Liner ext. for bale chamber bottom, R.H. center
50	F 7818	Liner ext. for bale chamber bottom, L.H. center
51	F 7819	Liner ext. for bale chamber bottom, L.H.
52	F 7812	Liner for bale chamber side, R.H.
53	F 7825	Liner for bale chamber side, L.H., 16" chamber
	F 7826	Liner for bale chamber side, L.H., 17" chamber
54	F 8056	Adjusting pad for plunger face, right side, twine only
55	F 8057	Adjusting pad for plunger face, center, twine only, 2 used
56	F 8058	Adjusting pad for plunger face, left side, twine only



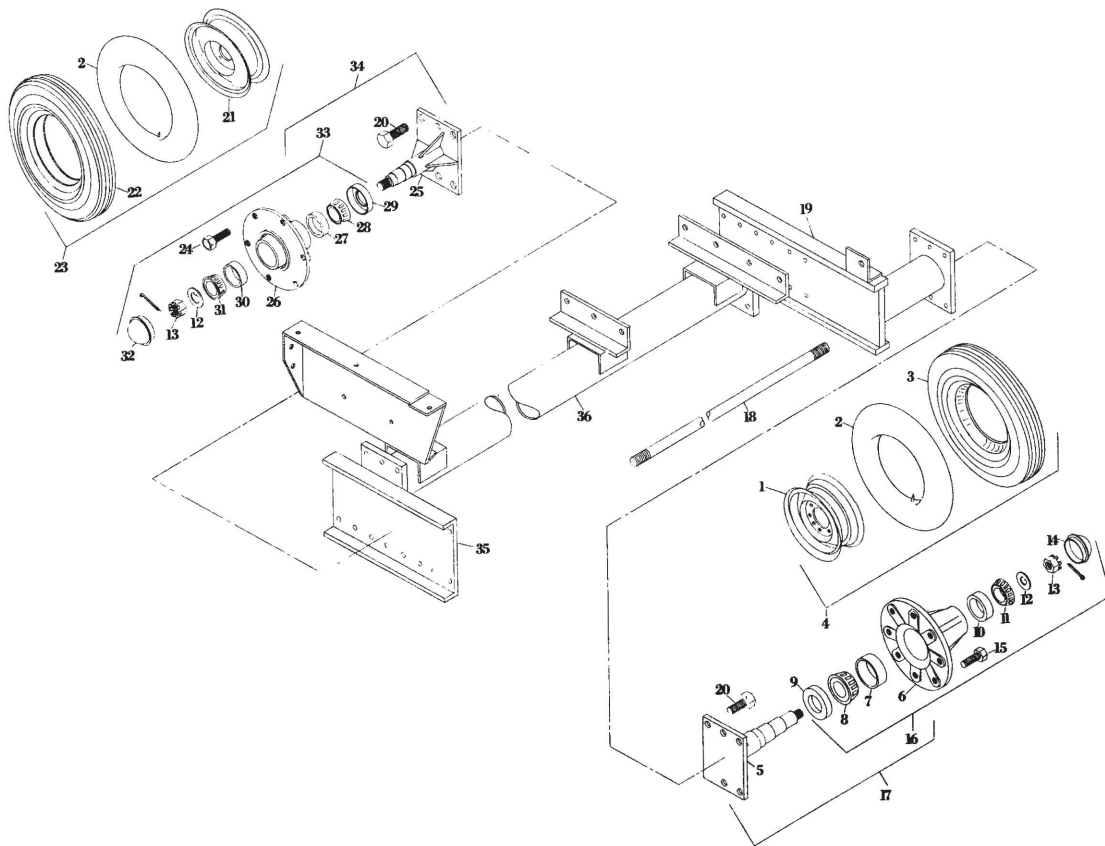
BALE CHAMBER

REF. NO.	PART NO.	DESCRIPTION	REF. NO.	PART NO.	DESCRIPTION
1	F 7507	Solid side (2 used)	18	F 7397	Sprocket for chain divider (2 used)
2	F 7121	Side tension rail (2 used)	19	F 841	Tightener bracket, knotter drive chain
3	F 7827	Top tension rail, (2 used)	20	F 7670	Chain tightener adjusting bolt
4	F 7668	Top tension angle, 17" x 22" chamber	21	F 7056	3/8" x 3/4" NC Button head bolt (8 used)
	F 7746	Top tension angle, 16" x 22" chamber	22	F 1581	Bracket for knotter drive chain shield
5	F 1153	Bottom tension angle, 17" x 22" chamber	23	F 7913	Idler roller mounting plate
	F 1151	Bottom tension angle, 16" x 22" chamber	24	F 883	Tightener and idler pulley for knotter drive chain
6	F 1662	Spacer shim, (2 used)	25	F 7056	Shield, knotter drive chain
7	F 497	Flat linkage bar (8 used)	26		1/2" x 4" NC Cap screw-top & bottom tension
8	F 600	Tension bolt, 3/4" x 27-3/4" (2 used)	27		1/2" x 5-1/2" NC Cap Screw-Side tension rail (2 used)
9	F 7828	Bottom tension rail, (2 used)	28		1/2" x 1-1/4" NC cap screw-Tension link linkage (8 used)
10	F 7797	Front Knotter chain shield	29		3/8" x 2-1/2" NC Cap screw-Bottom tension rail (2 used)
11	F 837	Hay dog, top and bottom, wire	30		3/8" x 1-1/4" NC Cap screw-Top tension rail (2 used)
	F 7911	Hay dog, long, top, twine	31		1/2" x 2-3/4" N.C. Cap Screw (2 used)
12	F 188	Hay dog spring	32		1/2" x 3" N.C. Cap screw
13	F 7798	Front knotter chain shield bracket			
14	F 220	Hay dog pin			
15	F 1589	Rubber pads for hay dogs, w/screws			
16		3/8" x 3/4" NC Cap screw			
17	F 1392	Knотter drive chain, twine tie balers (238P#60)			
	F 7055	Knотter drive chain, wire tie baler (239P#60)			
	F 759	Offset link, RC60			
	F 760	Connecting link, RC60			
	F 761	Roller link, RC60			



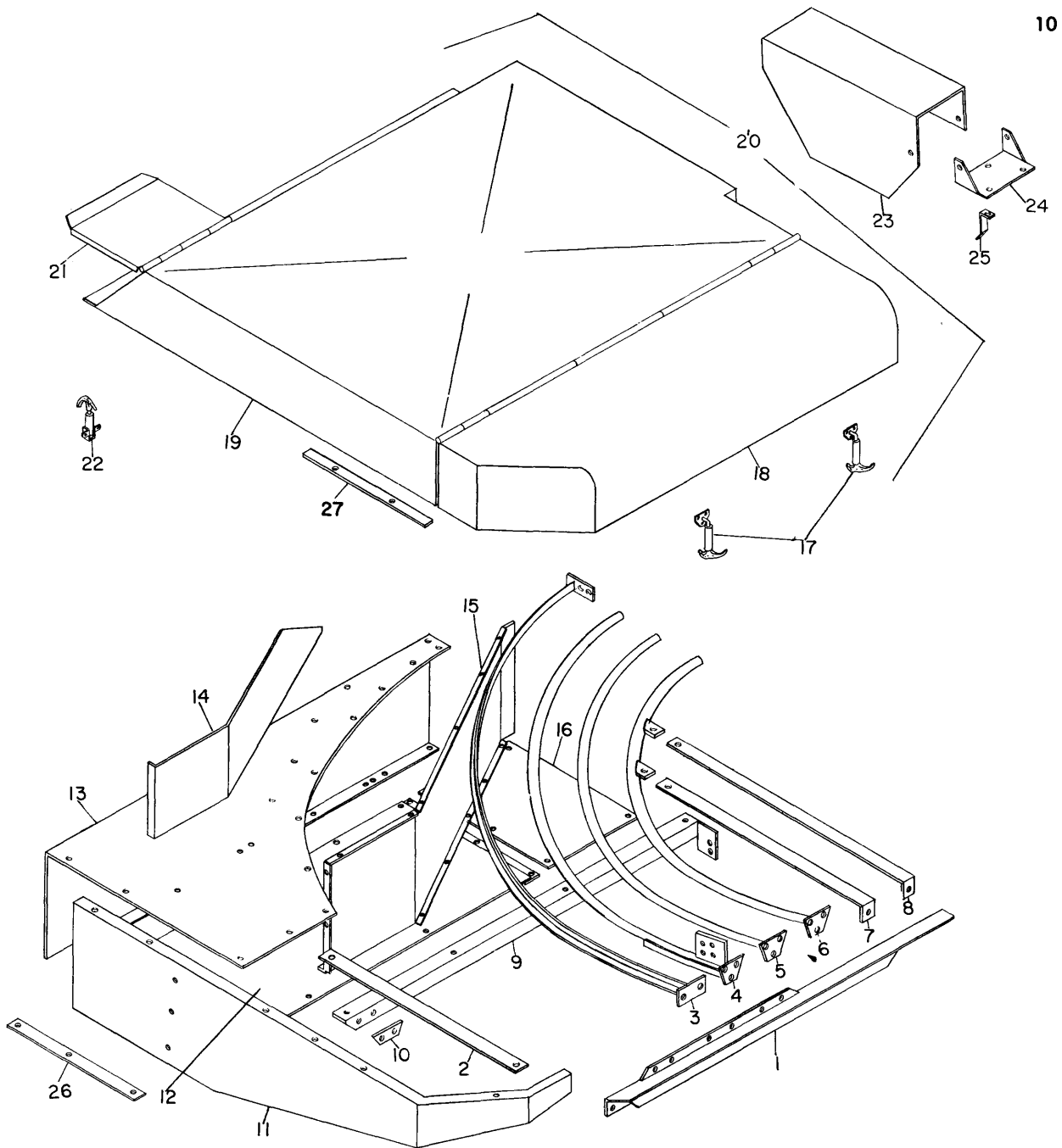
KNOTTER TRIP ASSEMBLY

REF. NO.	PART NO.	DESCRIPTION	REF. NO.	PART NO.	DESCRIPTION
1	F 1617	Meter wheel shaft bracket (2 used)	15	F 1568	Bushing, rest lever, 1/2" x 5/8" x 1" oilite
2	F 1618	Meter wheel shaft bearing complete (2 used)	16	F 1515	Clutch stop lever
	F 1619	Meter wheel shaft bearing only RAO12N.P.P.B.	17		1/2" x 7/8" - 14 ga. machine bushing
3	F 1531	Meter wheel, 10"	18	F 1517	Trip spring
4	F 8022	Meter wheel shaft	19	F 1632	Meter trip bar stop with bolt
5	F 1686	Meter trip bar	20	F 1579	Shield for meter wheel
6	F 1687	Knurled friction disc	21		1/2" x 1-1/2" N.C. Cap Screw, trip bar stop
7	F 8023	Guide washer	22		1/2" x 1-1/4" N.C. Cap Screw, clutch stop
8	F 278	Spring	23		5/16" x 2" N.F. Cap Screw, clutch stop clamp
9	F 440	Ferrule	24		3/8" x 1-1/4" N.C. Cap screw, knurled roller and washers
10	F 1572	Cam follower bearing	25		5/16" x 3/4" N.C.B.H. machine screw, bearing to bracket
11	F 1513	Knotter trip mount	26		3/16" x 3/4" Cotter key
12		3/4" x 1-1/4" - 10 ga. machine bushing	27		1/8" x 1" Cotter key
13	F 7227	Bushing, 3/4" x 7/8" x 3/4" oilite			
14	F 1514	Reset lever			



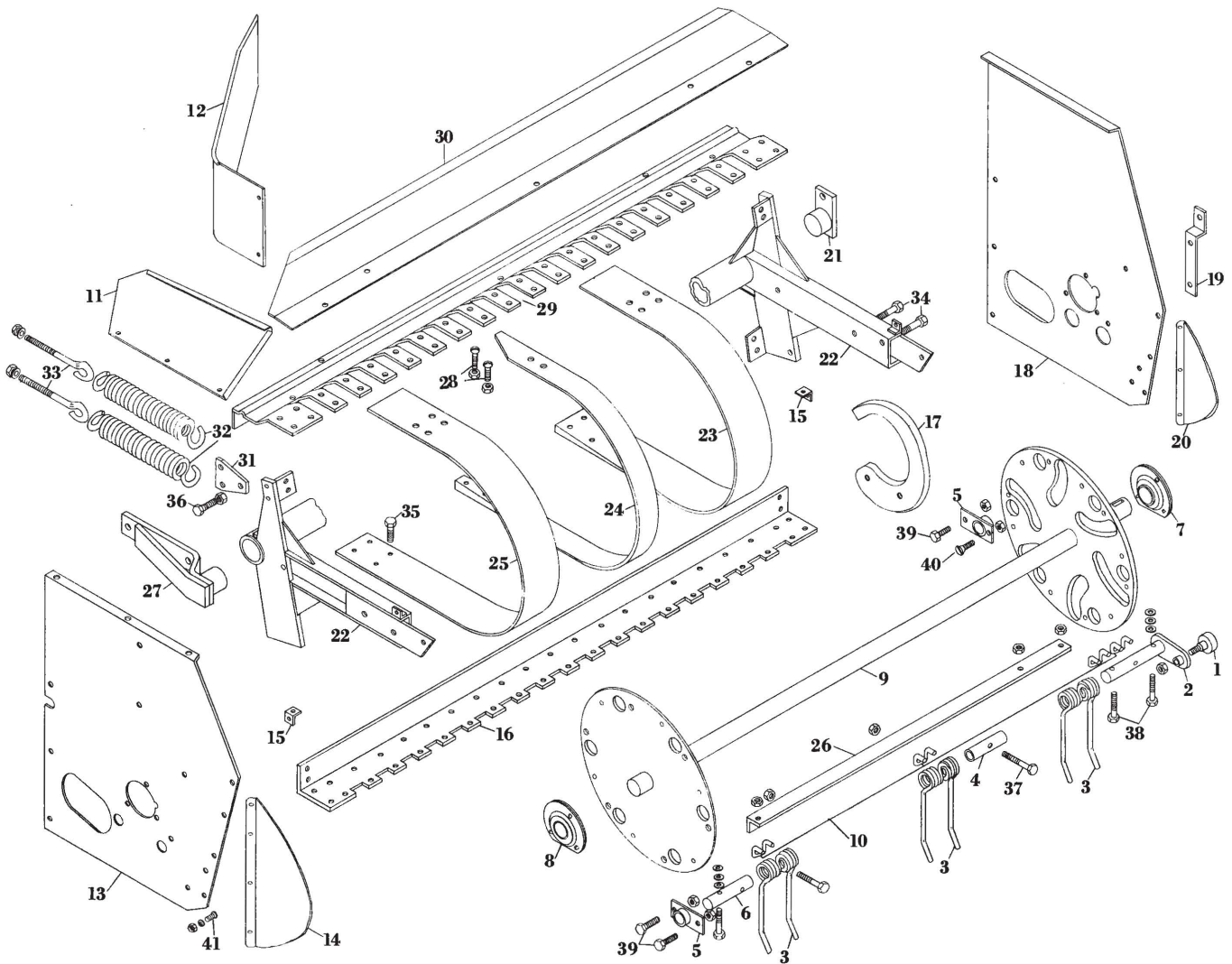
AXLE ASSEMBLY

REF. NO.	PART NO.	DESCRIPTION	REF. NO.	PART NO.	DESCRIPTION
1	F 7989	Wheel, 8-hole, drop center, for F 7992 hub, L. H.	24	F 5533	Lug bolt for F 8007 hub
2	F 215	Inner tube, 7:50 x 16	25	F 8006	Spindle for F 8007 hub, R.H. side
3	F 8029	Inner tube, for 11.5-15 flotation tire	26	F 8007	Hub with cups, R.H. side, 6 hole Q777
4	F 213	Tire, 7:50 x 16-8-ply implement	27	F 8008	Inner wheel bearing cup for F 8007 hub, LM29710
5	F 7990	Drop center single wheel w/8-ply tire & tube mounted, L.H. 8 hole	28	F 8009	Inner wheel bearing cone for F 8007 hub, LM29749
6	F 7991	Spindle for F 7992 hub, L.H. side, 8 hole	29	F 8010	Grease retainer for F 8007 hub
7	F 7992	Hub with cups, L.H. side Q778	30	F 8011	Outer wheel bearing cup for F 8007 hub, LM67010
8	F 7993	Inner wheel bearing cup for F 7992 hub, #25520	31	F 8012	Outer wheel bearing cone for F 8007 hub, LM 67048
9	F 7994	Inner wheel bearing cone for F 7992 hub, #25590	32	F 8014	Hub cap for F 8007 hub
10	F 7995	Grease retainer for F 7992 hub	33	F 8015	Single wheel hub w/bearings for 6-hole wheel less spindle, R.H.
11	F 7996	Outer wheel bearing cup for F 7992 hub, #25821	34	F 8016	Single wheel hub with spindle complete R.H. side
12	F 7997	Outer wheel bearing cone for F 7992 hub #25877	35	F 7756	Mounting channel, R.H. wheel
13	F 7998	Washer for spindle	36	F 7750	Tubular axle
14	F 7999	Nut for spindle		F 8018	Tandem wheel assembly, L.H. side to replace single assembly including one F 7757 plate, one F 8003 hub & spindle, & one F 7990 wheel & tire.
15	F 8000	Hub cap for F 7992 hub		F 8019	Tandem wheel assembly complete, L. H. side, including one F 7757 plate, two F 8003 hub & spindle, two F 7990 wheel & tire.
16	F 8001	Lug bolt for F 7992 hub		F 8020	Tandem wheel assembly, R.H. side, to replace single assembly including one F 8017 plate, one F 8016 hub & spindle and one F 8005 wheel & tire.
17	F 8002	Single wheel hub w/bearings for 8-hole wheel less spindle, L.H.		F 8021	Tandem wheel assembly complete, R.H. side, including one F 8017 plate, two F 8016 hub & spindle, two F 8005 wheel & tire.
18	F 8003	Single wheel hub with spindle complete L.H.			
19	F 600	Tandem axle base rod			
20	F 7757	Tandem wheel plate, L.H.			
21	F 7758	Bolt for spindle, 5/8" x 1-7/8" NFHT			
22	F 8004	Wheel, 6-hole, drop center for F 8007 hub, R.H.			
23	F 8013	Flotation wheel, 6-hole for F 8007 hub R.H.			
	F 212	Tire, 7:50 x 16, 4-ply implement			
	F 8028	Flotation tire, 11.5-15, 6-ply			
	F 8005	Drop Center wheel with 4-ply tire & tube, mounted, R.H. 6-hole			
	F 8030	Flotation wheel with 11.5-15 6-ply tire & tube, mounted, R.H.			



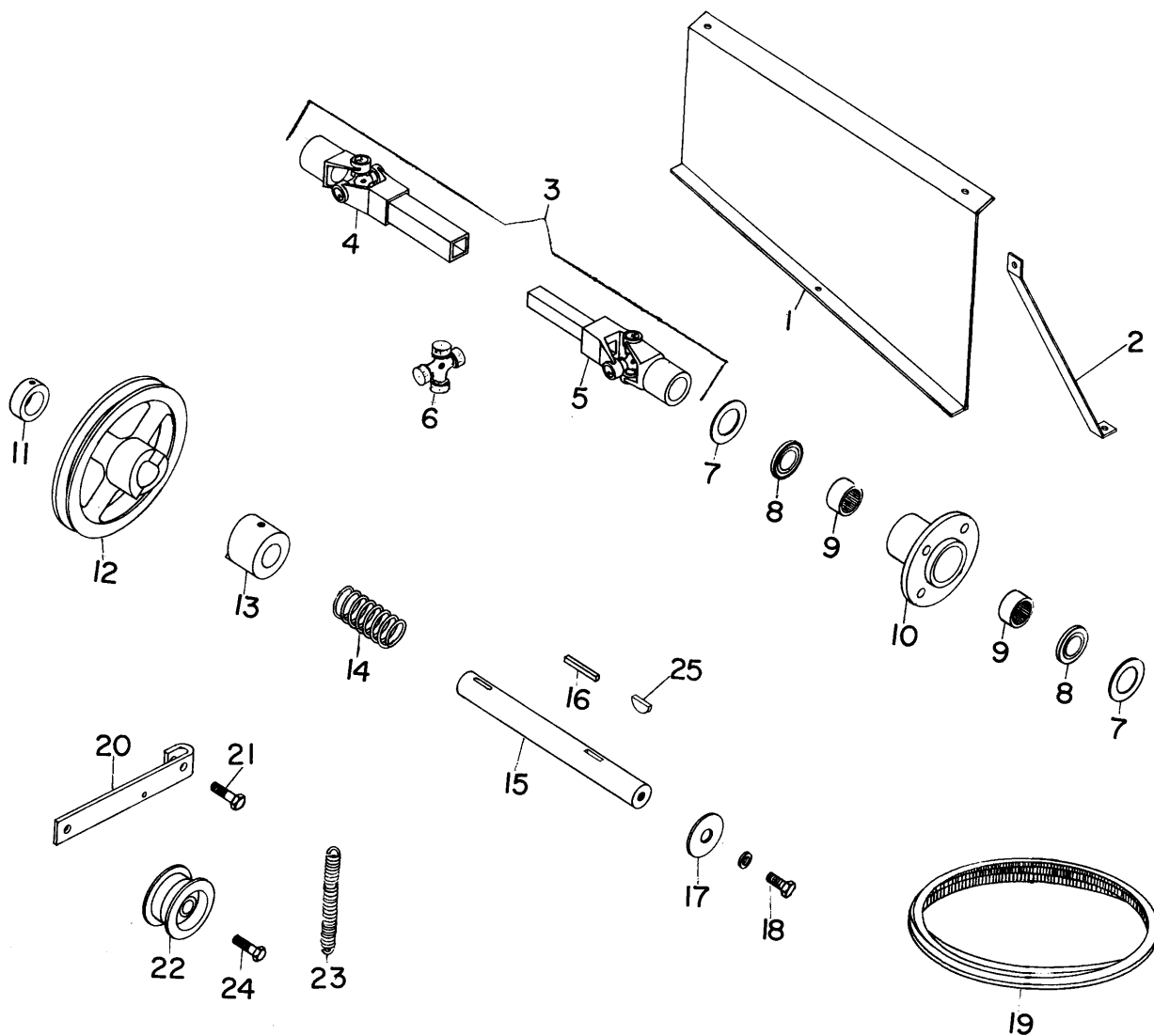
PICKUP FEEDER HOUSE

REF. NO.	PART NO.	DESCRIPTION	REF. NO.	PART NO.	DESCRIPTION
1	F 7482	Support angle for guard pipes	15	F 7152	Feeder house back sheet
2	F 7158	Hay hold down, outside	16	F 7145	Feeder house bottom wear plate
3	F 7299	Guard angle	17	F 7166	Catch for access door
4	F 7472	Guard pipe, outside with latch mounting plate	18	F 7633	Access door for F 7551 shield
5	F 7163	Guard pipe, center	19	F 7634	Shield over pickup, rear
6	F 7164	Guard pipe, inside	20	F 7551	Shield over pickup complete
7	F 7159	Hay hold down, center	21	F 7635	Tool box lid
8	F 7160	Hay hold down, inside	22	F 853	Catch for tool box cover
9	F 7157	Angle brace for feeder house bottom sheet	23	F 7517	Shield for needle yoke drive arm and brake
10	F 7394	Pickup stop	24	F 7579	Bracket knotted drive arm shield
11	F 7143	Feeder house end plate	25	F 7654	Brace for F 7579 bracket
12	F 7713	Feeder house bottom	26	F 7714	Feeder house bottom end shim, R.H.
13	F 7142	Feeder house rear and top section	27	F 7789	Shim for top of feeder house end plate
14	F 7127	Upright shield under hood			



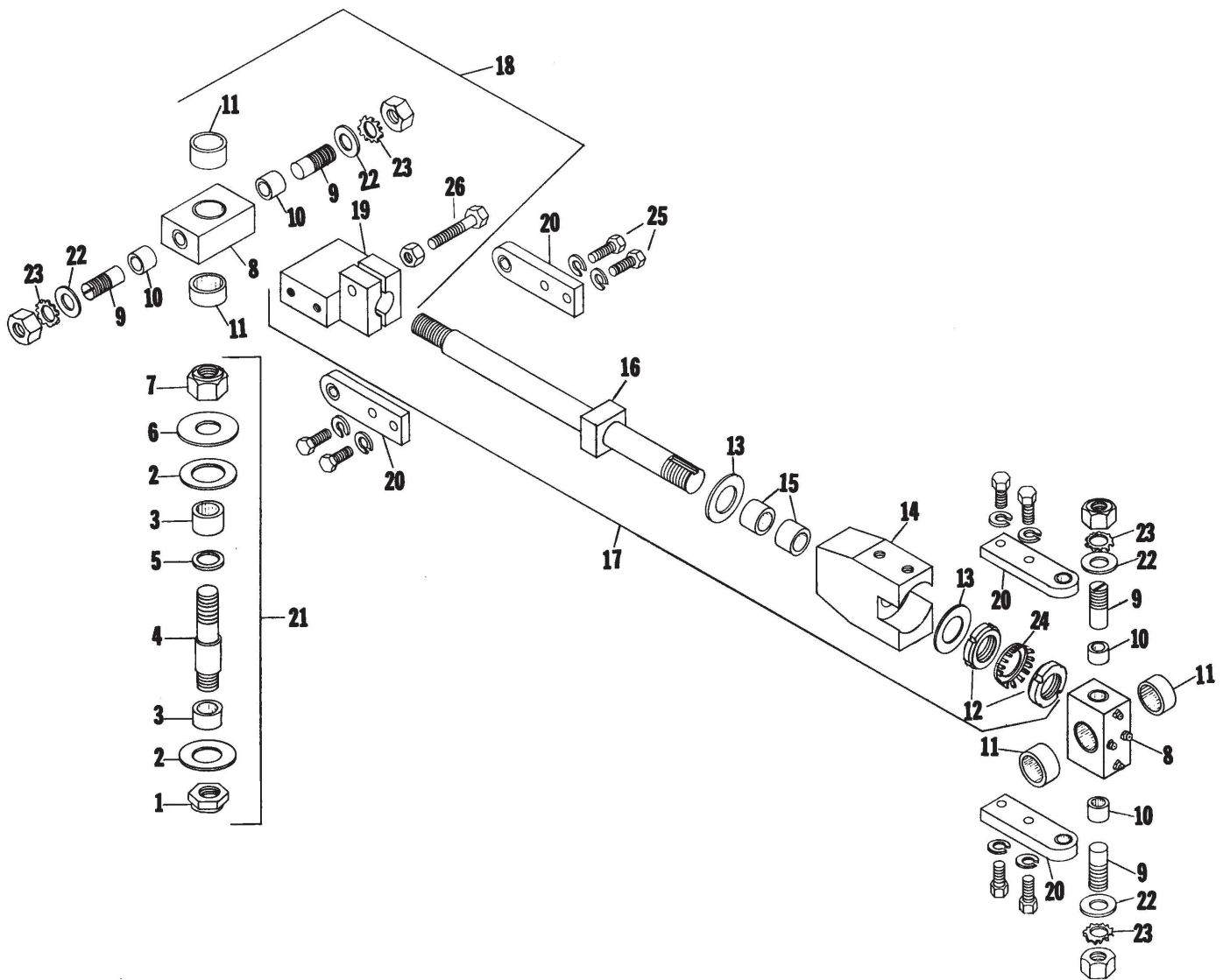
PICKUP CYLINDER ASSEMBLY

REF. NO.	PART NO.	DESCRIPTION	REF. NO.	PART NO.	DESCRIPTION
1	F 7598	Roller for F 7597 cam lever	22	F 7177	Pickup frame
2	F 7599	Cam lever only	23	F 7732	Stripper, inside
	F 7597	Cam lever with roller (6 used)	24	F 7734	Stripper, center (17 used)
3	F 1226	Pickup finger, 6-1/2" shank (54 used)	25	F 7741	Stripper, outside
4	F 101	Pickup finger guide pipe (42 used)	26	F 7186	Tooth bar (6 used)
5	F 7187	Tooth bar bearing (12 used)	27	F 7382	Bearing, R.H., pickup mounting
6	F 98	Pin, tooth bar (6 used)	28		5/16" x 1" R.H. machine screw
7	F 7584	Bearing, pickup shaft, L.H.	29	F 7730	Top stripper bar, (formed)
8	F 7583	Bearing, pickup shaft, R.H.	30	F 7731	Pickup joint sheet
9	F 1717	Pickup shaft with flanges	31	F 7156	Spring plate
10	F 100	Pickup finger guide (60 used)	32	F 7154	Spring for pickup balance (2 used)
11	F 7146	Skirt for fender	33	F 96	Eyebolt for pickup balance spring (2 used)
12	F 7149	Fender extension	34		1/2" x 2-1/2" NC cap screw
13	F 7573	Fender, outside	35		5/16" x 3/4" NC cap screw
14	F 7148	Fender flare, outside	36		7/16" x 1-1/2" NC cap screw
	F 7355	Fender flare extension, outside	37		5/16" x 2" NC HT cap screw
15	F 7193	Fender mounting clip (4 used)	38		5/16" x 2-1/4" NC cap screw
16	F 7180	Bottom stripper bar	39		5/16" x 1" NC cap screw
17	F 7190	Pickup cam	40		5/16" x 1" CS machine screw
18	F 7572	Fender, inside	41		1/4" x 1/2" R.H. machine screw
19	F 7194	Pickup lift bracket		F 7760	Pickup complete, less balance springs, lift bracket, and mounting bearings
20	F 7151	Fender flare, inside			
	F 7356	Fender flare extension, inside			
21	F 7176	Bearing, L. H., pickup mounting			



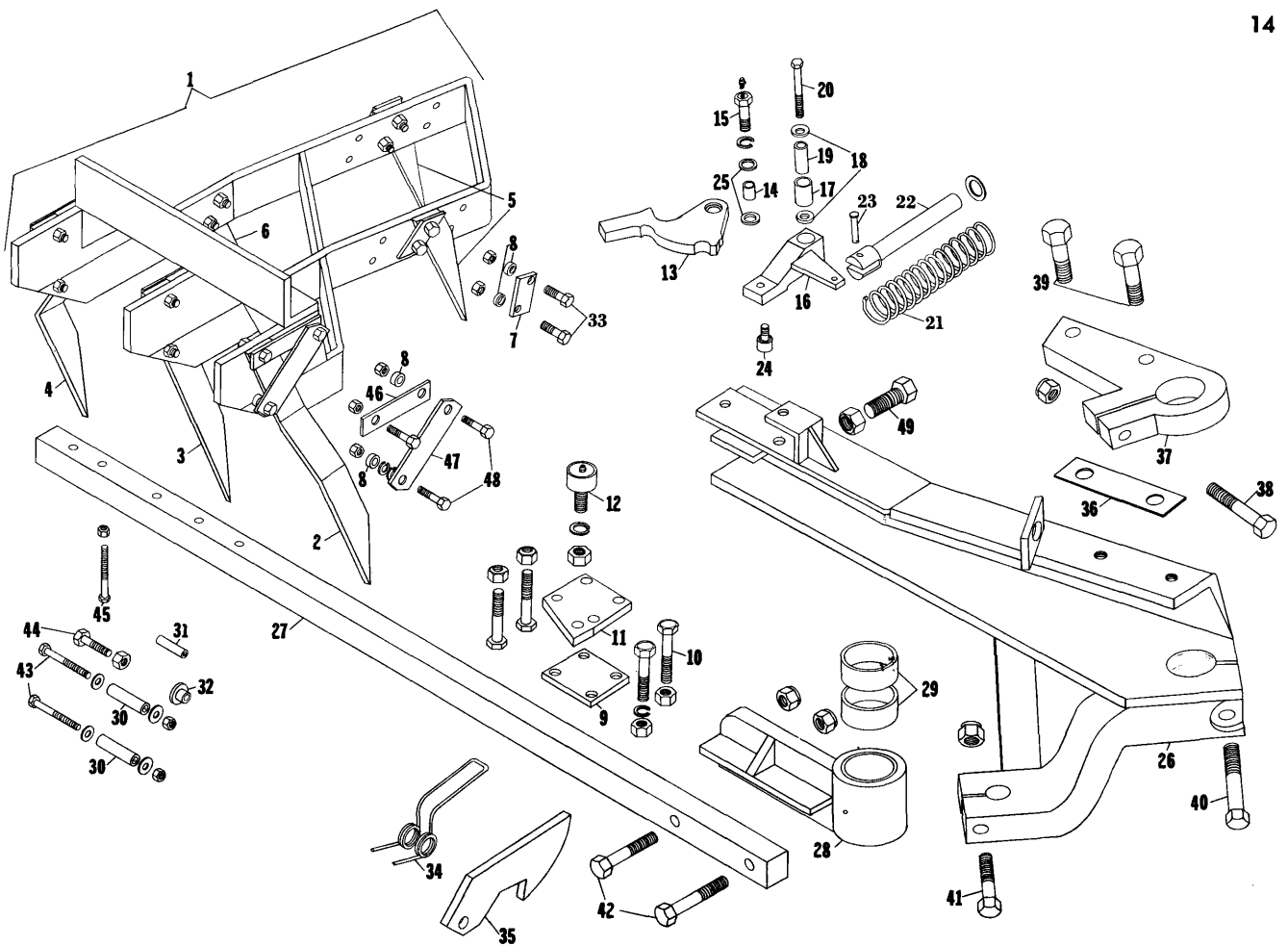
PICKUP DRIVE

REF. NO.	PART NO.	DESCRIPTION	REF. NO.	PART NO.	DESCRIPTION
1	F 7706	Pickup drive shaft shield	12	F 8A	Pickup driven sheave
2	F 7829	Brace for pickup drive shaft shield	13	F 7	Pickup clutch ring
3	F 7051	Universal drive shaft complete	14	F 126	Pickup clutch spring
4	F 7053	Universal with square tube	15	F 1264	Pickup drive shaft
5	F 7052	Universal with square shaft	16	F 122	Key, 1/4" x 1/4" x 2-1/2"
6	F 318	Universal joint repair kit	17	F 418	Pickup clutch spring cap
7	F 4136	Washer (2 used)	18		1/2" x 1" N.C. cap screw
8	F 671	Grease seal for F 669 (40169) (2 used)	19	F 7535	Pickup drive belt, CX105
9	F 672	Needle bearing for F 669 (BH2216) (2 used)	20	F 7546	Pickup drive belt tightener bracket
10	F 669	Pickup shaft bearing cage with bearing and seal	21		1/2" x 2-1/4" N.C. cap screw
11	F 99	Set collar, 1-3/8"	22	F 840	Idler pulley, pickup belt tightener
			23	F 129	Spring, pickup belt tightener
			24		1/2" x 2-1/2" N.C. cap screw
			25	F 83	Woodruff Key, 3/8" x 1-1/4"



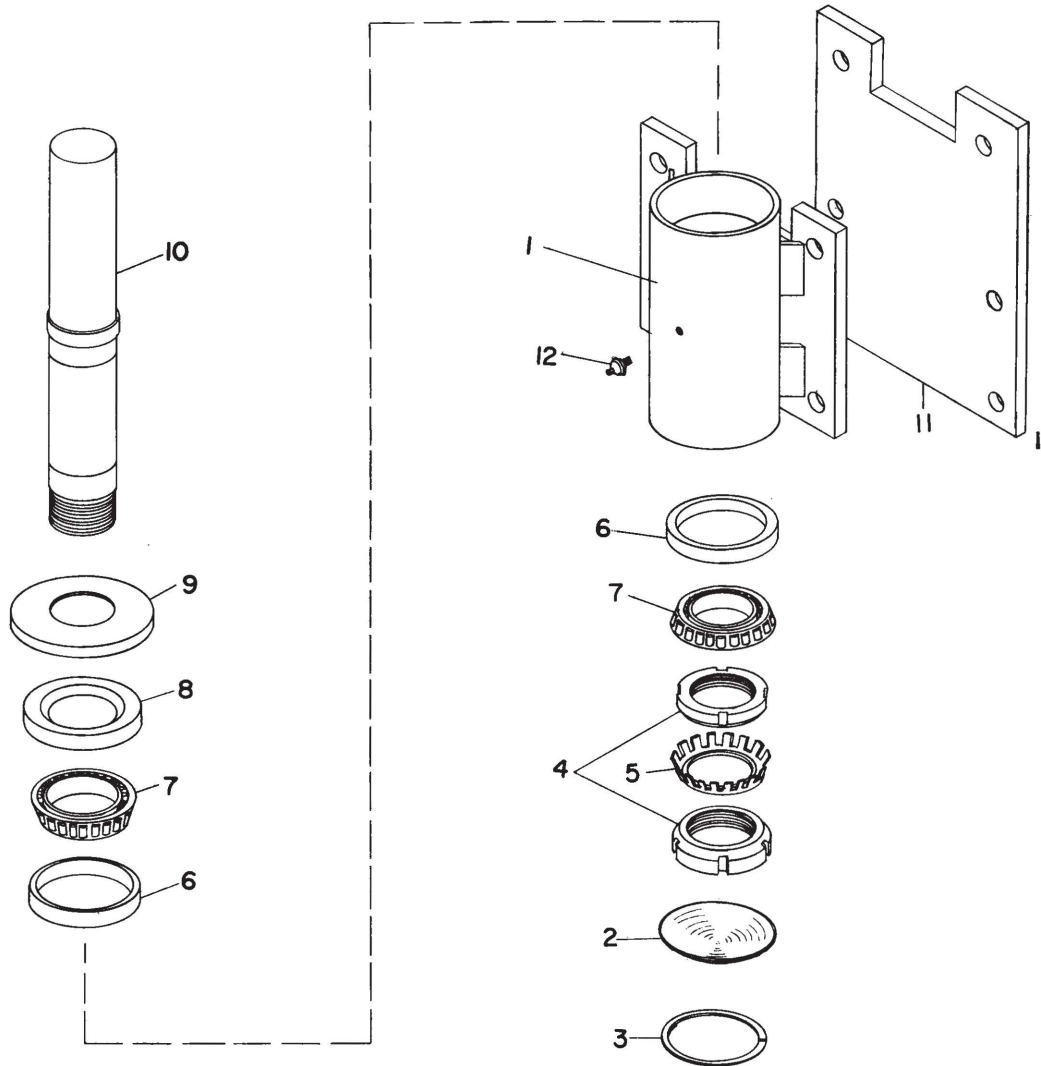
FEED ARM DRIVE

REF. NO.	PART NO.	DESCRIPTION	REF. NO.	PART NO.	DESCRIPTION
1	F 1386	Lock nut (1" jam)	13	F 7603	Thrust washer for F 7578 block
2	F 1260	Hardened washer, 1-3/8" x 2-1/2" x .025" (4 used)	14	F 7578	Thrust bearing block
3	F 1071	Inner race for F 480 bearing IR 1812 (4 used)	15	F 7612	Bushing for F 7578 block, 1-3/16" x 1-5/16" x 1-1/4"
4	F 1306	Crank pin only	16	F 8025	Feed arm conn rod only
5	F 1259	Spacer for F 1071	17	F 8026	Feed arm conn rod assembly
6	F 1261	Hardened washer, 1" x 2-1/2" x .065" (2 used)	18	F 482	Universal joint complete, RH thread
7	F 1385	Lock nut (1" full)	19	F 354	Adjusting block, RH thread
8	F 486	Bearing block with bearings (2 used)	20	F 484	Strap for universal (4 used)
9	F 485	Bearing pin in F 484 strap (4 used)	21	F 1450	Crank pin with races, washers and nuts complete
10	F 481	Bearing in F 486 block (small) B1212 (4 used)	22	F 802	Washer, bearing pin
11	F 480	Bearing in F 486 block (large) B2212 (4 used)	23	F 8027	Lock washer, W-06
12	F 8024	Adjusting nut with thrust washer, N-06	24		1/2" x 1-1/2" NC Cap screw
			25		1/2" x 2-1/2" NC Cap screw
			26		



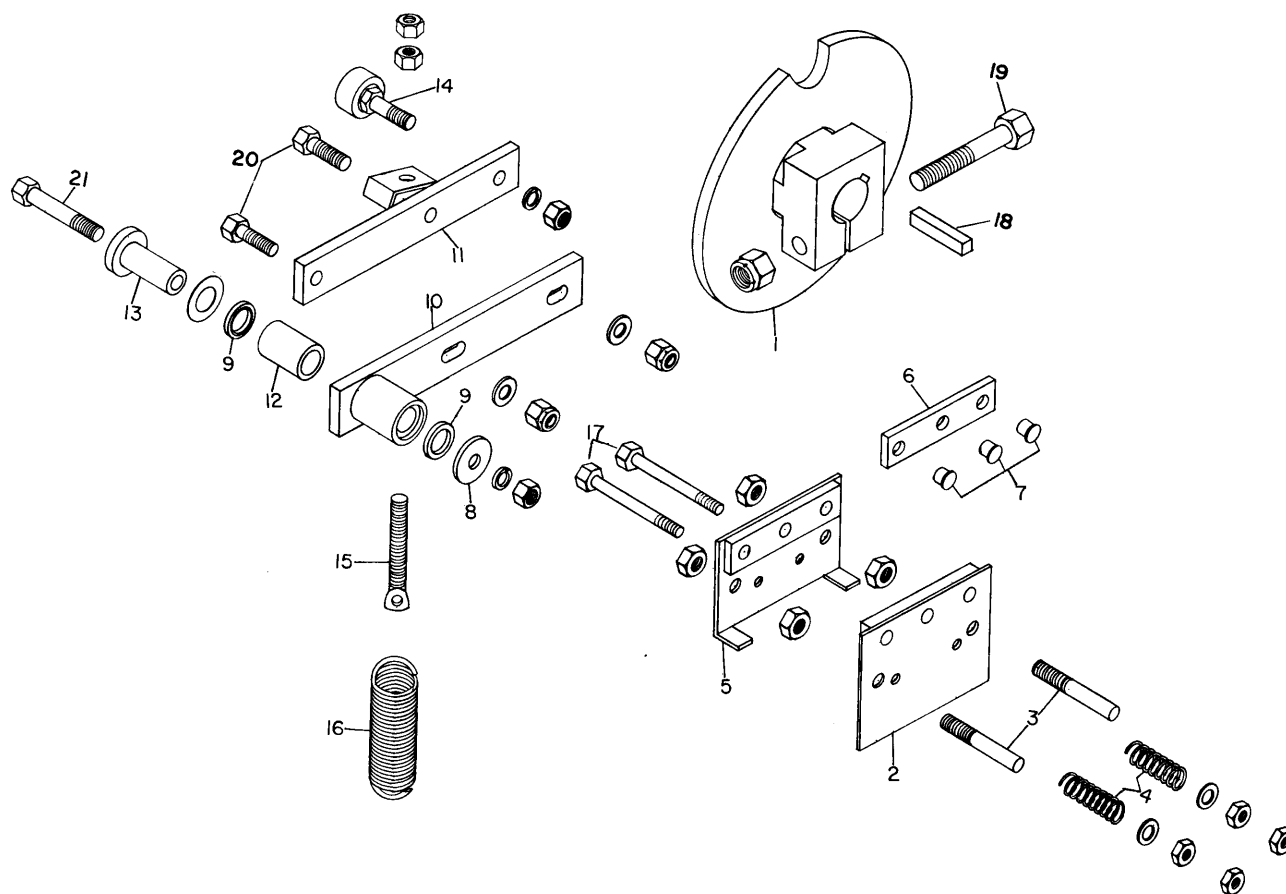
FEED ARM AND FEED FORK

REF. NO.	PART NO.	DESCRIPTION	REF. NO.	PART NO.	DESCRIPTION
1	F 7966	Feed fork complete	29	F 1235	Bushing for torque shaft bearing, 2" x 2-1/2" x 1"
2	F 7967	Tine, trailing, inside, 1" offset	30	F 7275	Roll pin, 1/2" x 2" (2 used)
3	F 7968	Tine, trailing, center	31	F 7239	Roll pin, 3/8" x 1-1/2"
4	F 7969	Tine, trailing, outside, 2-1/2" offset	32	F 7276	Ferrule for F 1563
5	F 1603	Tine, leading, short (2 used)	33		7/16" x 1-1/2" N.F.H.T. cap screw
6	F 1189	Tine, outside center	34	F 281	Spring latch
7	F 1195	Clip for tines	35	F 1563	Catch for torque shaft
8	F 1193	Bushing and stop for tines	36	F 1648	Shim for straddle mount, 16 ga.
9	F 7532	Bottom plate		F 1649	Shim for straddle mount, 22 ga.
10	F 7534	Bolt, 3/8" x 2-3/4" N.F.H.T.	37	F 1634	Straddle mount plate for pivot shaft
11	F 7533	Roller plate			
12	F 4050	Latch roller	38		Bolt, 1/2" x 3" NF with nut, straddle mount plate clamp
13	F 7604	Latch	39		5/8" x 1-3/4" N.C. cap screw, straddle mount plate
14	F 7607	Bushing for F 7604 latch	40	F 1673	1/2" x 3" N.F. cap screw with lock nut, grade 8, feed arm clamp
15	F 7605	Latch hinge pin	41		1/2" x 4-1/4" N.F. cap screw with lock nut, clamp for feed arm pin
16	F 7606	Trip arm	42		1/2" x 3" N.F. cap screw with lock nut, torque shaft
17	F 1556	Trip arm bushing	43		5/16" x 2-1/2" N.C. cap screw, for spring and stop latch
18	F 1557	O ring (2 used)	44		7/16" x 1-1/2" N.C. cap screw, latch hinge pin
19	F 1558	Trip arm sleeve	45		3/8" x 2-1/2" N.F.H.T. cap screw (5 used)
20	F 1559	Trip arm pin	46	F 7970	Strap for feed fork tine, inside
21	F 1635	Trip arm spring	47	F 7971	Strap for feed fork tine, outside
22	F 1643	Trip arm spring rod	48		7/16" x 1-3/4" NFHT cap screw
23	F 1561	Trip arm spring rod clevis pin	49		5/8" x 1-3/4" NC cap screw w/nut
24	F 822	Cam follower for spring arm (CF1-S)			
25	F 7610	Quad ring for F 7604 latch			
26	F 7577	Feed arm			
27	F 7529	Torque shaft, 1-1/2"			
28	F 7660	Torque shaft bearing with bushing			



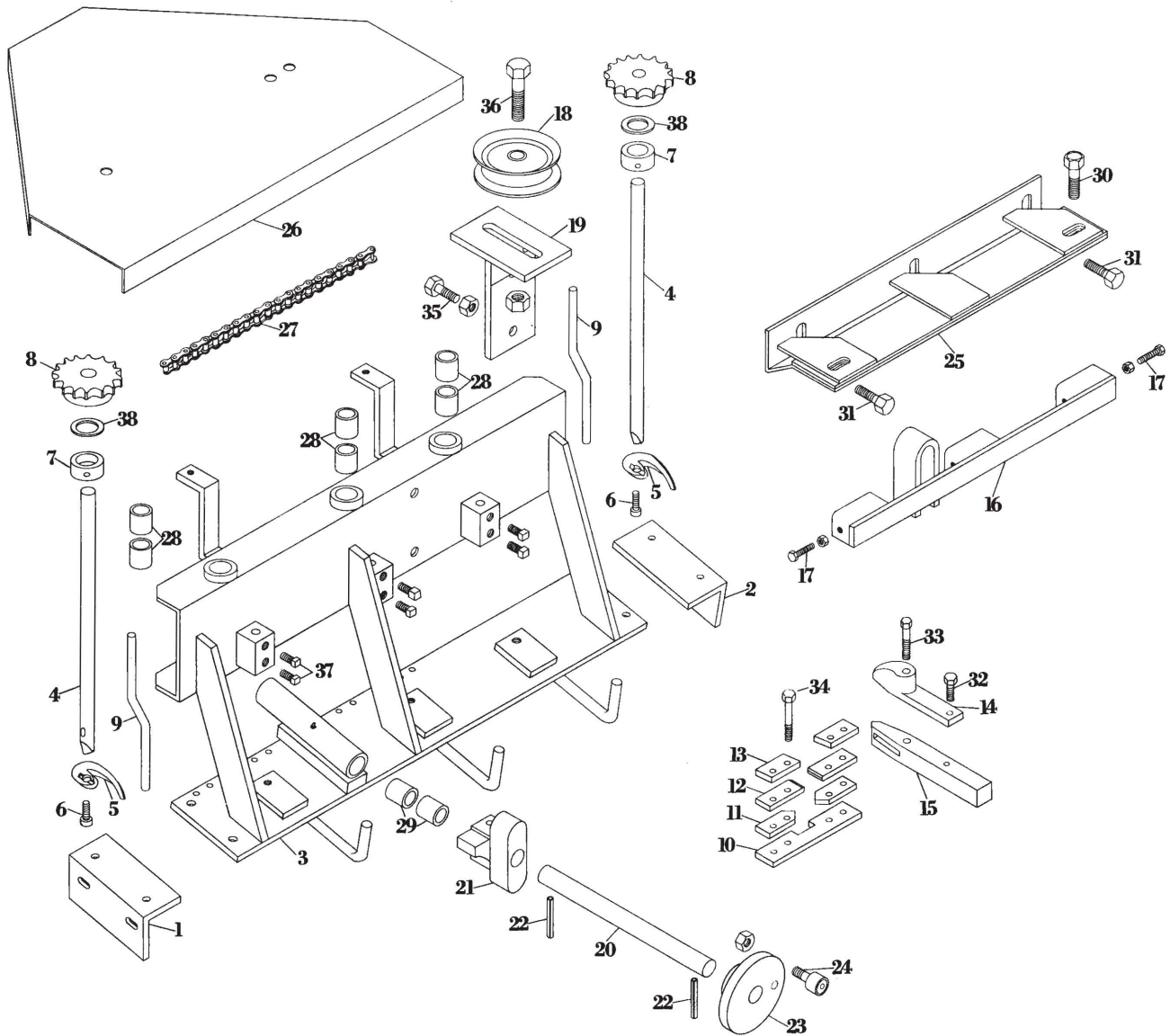
FEED ARM PIVOT SHAFT

REF. NO.	PART NO.	DESCRIPTION
1	F 1244	Feed arm bearing housing w/2-F5445 bearing cups
2	F 1248	Plug cap (HP 3750-134)
3	F 1247	Retaining ring (RR 375)
4	F 1245	Nut, bearing takeup (N-10) (2 used)
5	F 1246	Lock washer (W-10)
6	F 5445	Bearing cup (362A) (2 used)
7	F 5446	Bearing cone (368A) (2 used)
8	F 1428	Oil seal, used with F 1427 shaft (nat. 55093)
9	F 1239	Dust cap
10	F 1427	Pivot shaft
11	F 1250	Pivot shaft plate, 16" chamber
	F 1251	Pivot shaft plate, 17" chamber
12	F 1661	Hydraulic shut-off fitting # 1940B



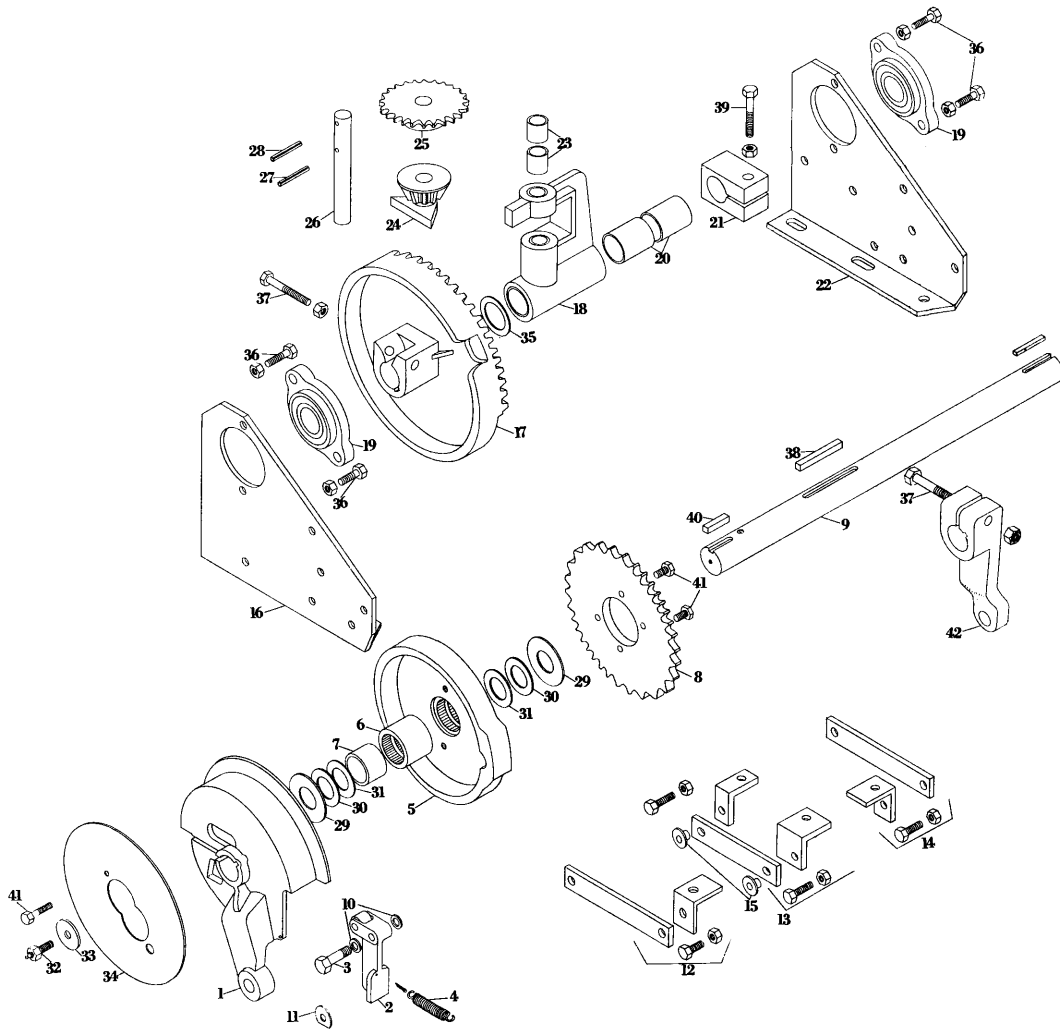
KNOTTER BRAKE ASSEMBLY

REF. NO.	PART NO.	DESCRIPTION	REF. NO.	PART NO.	DESCRIPTION
1	F 7528	Brake disc with hard notch, 1-3/8"	13	F 7585	Saddle lever sleeve
2	F 7450	Outside brake plate with lining	14	F 1572	Cam follower, saddle lever
3	F 7451	Brake plate stud (2 used)	15	F 7448	Saddle lever spring eyebolt
4	F 7453	Brake plate spring (2 used)	16	F 7559	Saddle lever spring
5	F 7449	Inside brake plate with lining	17	F 7452	Brake plate bolt, 1/4" x 3-1/2"
6	F 7454	Brake lining with rivets (2 used)			N.C.
7		Rivets for brake lining (6 used)	18	F 7904	3/8" x 3/8" x 2" key for brake disc
8	F 246	Saddle lever washer	19		1/2" x 3-1/4" N.C. cap screw w/fibre lock nut for brake clamp
9	F 7587	Seal for saddle lever anchor (63123 Victor)	20		5/16" x 1-1/4" N.C. cap screw w/fibre lock nut for saddle lever
10	F 7561	Saddle lever lower half with bushing	21		3/8" x 3-1/2" N.C. cap screw w/fibre lock nut for saddle lever anchor
11	F 7560	Saddle lever upper half with spring anchor			
12	F 7586	Bushing for saddle lever, 3/4" x 1" x 1-1/2"			



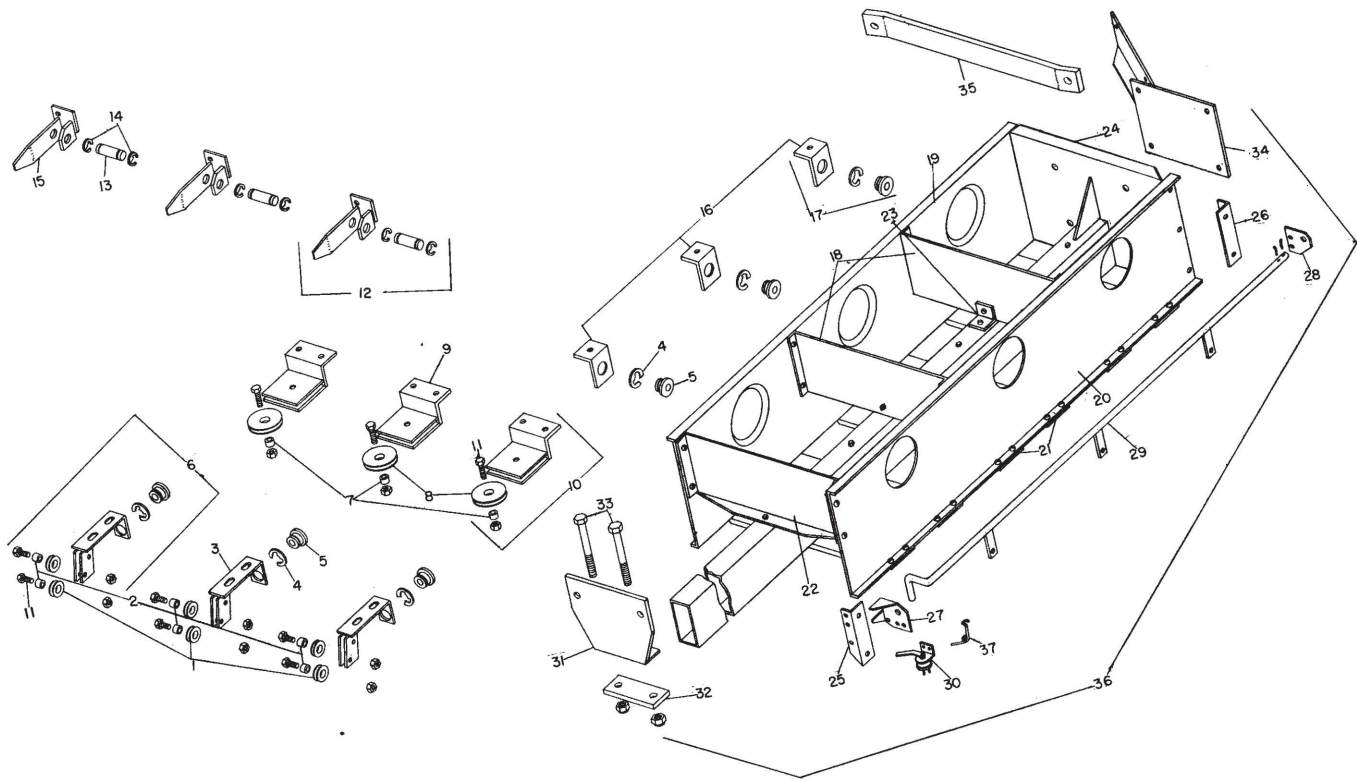
WIRE KNOTTER

REF. NO.	PART NO.	DESCRIPTION	REF. NO.	PART NO.	DESCRIPTION
1	F 7062	Knotter mounting angle, L. H.	21	F 7075	Shuttle bar drive cam
2	F 7065	Knotter mounting angle, R.H.	22	F 7076	Roll pin, 1/4" x 1-1/2"
3	F 7793	Twister and shuttle bar frame	23	F 7078	Shuttle bar crank flange
4	F 7089	Twister shaft	24	F 7079	Cam follower
5	F 4046	Twister hook	25	F 7794	Upper wire guide bracket
6	F 7248	Twister hook bolt	26	F 7064	Shield
7	F 172	Set collar, 3/4"	27	F 7796	Twister drive chain, 77P # 40
8	F 4024	Sprocket, twister shaft, 15T	28	F 7227	Bushing, twister shaft
9	F 7318	Wire holder rod	29	F 7227	Bushing, cam shaft
10	F 7087	Wire knife	30		3/8" x 1-1/4" N.C. cap screw
11	F 7086	Gripper spacer, bottom	31		3/8" x 1" N.C. cap screw
12	F 7085	Wire gripper	32		5/16" x 3/4" N.C. cap screw
13	F 7084	Gripper top plate	33		3/8" x 2-1/2" N.F.H.T. cap screw
14	F 7312	Wire divider	34		5/16" x 1-3/4" N.F.H.T. cap screw
15	F 7313	Wire gripper tongue	35		3/8" x 1" N.C. cap screw
16	F 7792	Shuttle bar with adjusting screws	36		1/2" x 2" N.C. cap screw
17	F 7081	Shuttle bar adjusting screws	37		3/8" x 3/4" N.C. square head set screw
18	F 7330	Chain tightener pulley	38		Washer, 10 ga., 3/4"
19	F 7329	Chain tightener pulley bracket			
20	F 7077	Cam shaft			



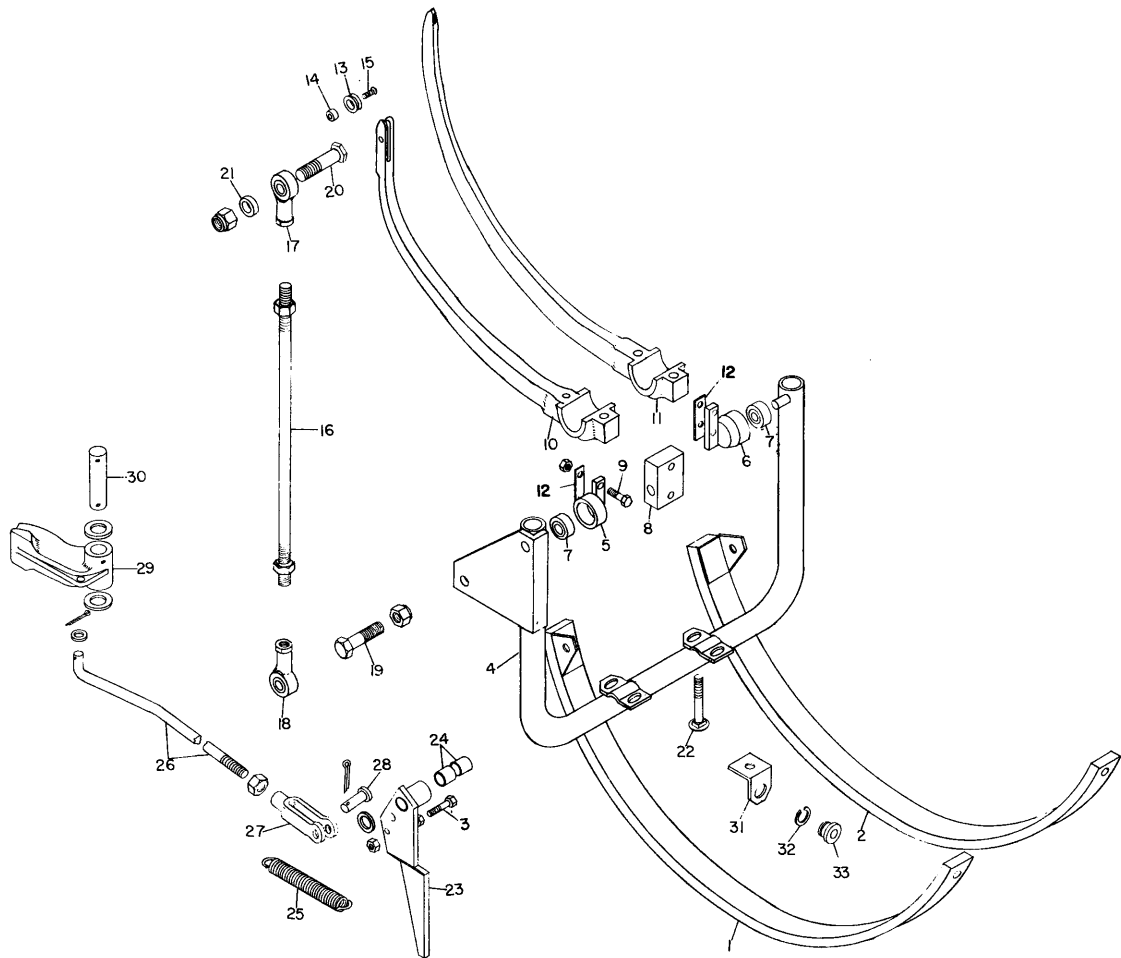
WIRE KNOTTER

REF. NO.	PART NO.	DESCRIPTION	REF. NO.	PART NO.	DESCRIPTION
1	F 7519	Clutch w/pawl, 1-3/8"	23	F 7247	Bushing for F 7072 frame, 7/8" x 1" x 1"
2	F 1622	Clutch pawl	24	F 7431	Pinion
3	F 1633	Clutch pawl pin	25	F 7257	Twister drive sprocket, 40B25
4	F 4115	Spring, clutch pawl	26	F 7069	Pinion shaft
5	F 4133	Notched clutch disc with F 4134 bearing, 1-3/8"	27	F 7076	Roll pin, pinion to shaft, 1/4" x 1-1/2"
6	F 4134	Bearing for F 4133 disc	28	F 4030	Roll pin, sprocket to shaft 1/4" x 2"
7	F 4135	Inner race for F 4134 bearing	29	F 4136	Hardened washer, 1-3/8" I.D., 16 ga.
8	F 755	Clutch sprocket (32T-#60)	30	F 4159	Knotter shaft spacer washer, 10 ga.
9	F 7456	Knotter shaft	31	F 4161	Knotter shaft spacer washer, 18 ga.
10	F 1623	Washer, 7/16" I.D. x 7/8" O.D. x .025"	32	F 1576	Adapter with 1950 zerk, end of knotter shaft
11	F 1620	Clutch pawl pin lock	33	F 246	Knotter shaft end washer, L. H.
12	F 7349	Brace w/angle, L.H.	34	F 7987	Shield for knotter clutch
13	F 7346	Brace w/angle, center	35	F 4159	Washer spacer, 10 ga., 1-3/8" I.D.
14	F 7345	Brace w/angle, R.H.		F 4160	Washer spacer, 14 ga., 1-3/8" I.D.
15	F 440	Ferrule for F 7346 brace		F 4161	Washer spacer, 18 ga., 1-3/8" I.D.
16	F 7571	Knotter mount, L. H.	36		3/8" x 1-1/2" NC cap screw
17	F 7432	Intermittent gear	37		1/2" x 3" NC cap screw
18	F 7072	Pinion frame	38		3/8" x 3/8" x 2-3/4" Key
19	F 7063	Bearing, knotter shaft (2 used)	39		1/2" x 2-3/4" NC cap screw
20	F 4137	Bushing for F 7072 frame, 1-3/8" x 1-1/2" x 2"	40		3/8" x 3/8" x 2" key
21	F 4138	Clamp collar	41		3/8" x 1" NC Cap screw
22	F 7570	Knotter mount, R.H.	42	F 7461	Needle yoke drive arm
				F 7980	Wire knotter complete with clutch & brake



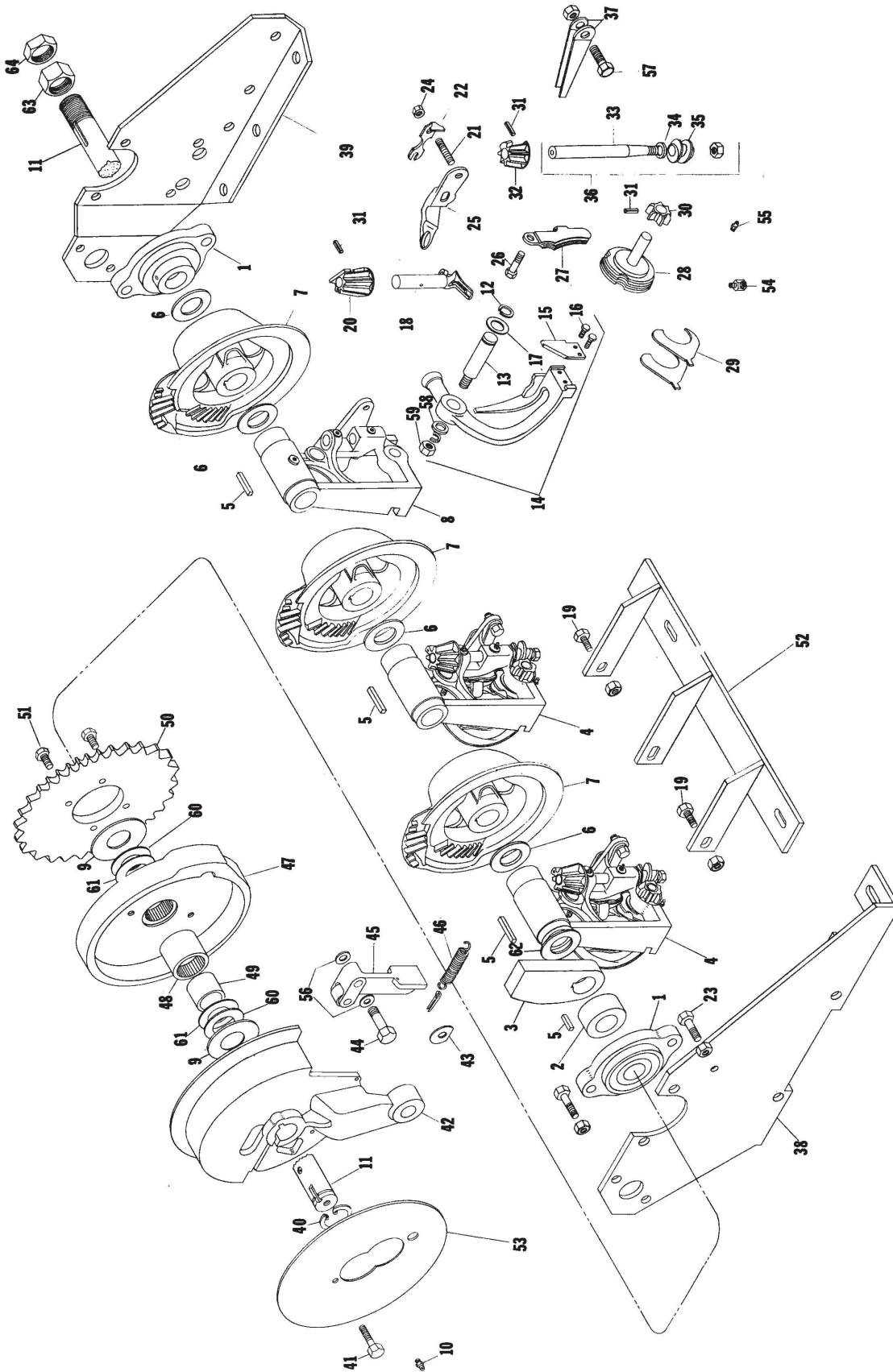
WIRE BOX AND WIRE GUIDES

REF. NO.	PART NO.	DESCRIPTION	REF. NO.	PART NO.	DESCRIPTION
1	F 4014	Roller for wire guide and needle	21	F 7640	Wire box bottom slats
2	F 4015	Bushing for F 4014 roller	22	F 7641	Wire box end, left
3	F 4222	Wire guide frame only (lower rear)	23	F 7642	Wire box divider angle
4	F 857	Snap ring for F 856 bushing	24	F 7643	Wire box base with end plate
5	F 856	Wire guide bushing	25	F 7644	Angle for wire alarm mounting bracket, L. H.
6	F 4205	Wire guide complete, lower rear	26	F 7645	Angle for wire alarm mounting bracket, R.H.
7	F 4068	Bushing for F 4067 roller	27	F 4191	Mounting bracket for wire alarm rod, L. H.
8	F 4067	Roller, lower front wire guide	28	F 4190	Mounting bracket for wire alarm rod, R.H.
9	F 4223	Wire guide frame only, lower front	29	F 7608	Rod for wire alarm
10	F 4069	Wire guide complete, lower front	30	F 946	Switch only for wire alarm
11		Bolt with lock nut, 1/4" x 1" N.C. Cap screw	31	F 7555	Wire box mounting bracket
12	F 4203	Upper wire guide complete with pin	32	F 7556	Bottom support plate for F 7555
13	F 4204	Upper wire guide wear pin	33		Bolt with nut, 1/2" x 5-1/2" N.C. Cap screw
14	F 5159	Snap ring for wear pin	34	F 7557	Wire box mounting bracket, R.H.
15	F 4225	Upper wire guide, bracket only	35	F 7705	Brace for F 7557 RH wire box bracket
16	F 4163	Wire guide bracket, rear	36	F 7515	6 compartment wire box complete with braces and harness
17	F 4224	Wire guide bracket complete with bushing	37	F 4210	Spring for wire alarm rod
18	F 7637	Wire box divider			
19	F 7638	Wire box side, front			
20	F 7639	Wire box side, rear			



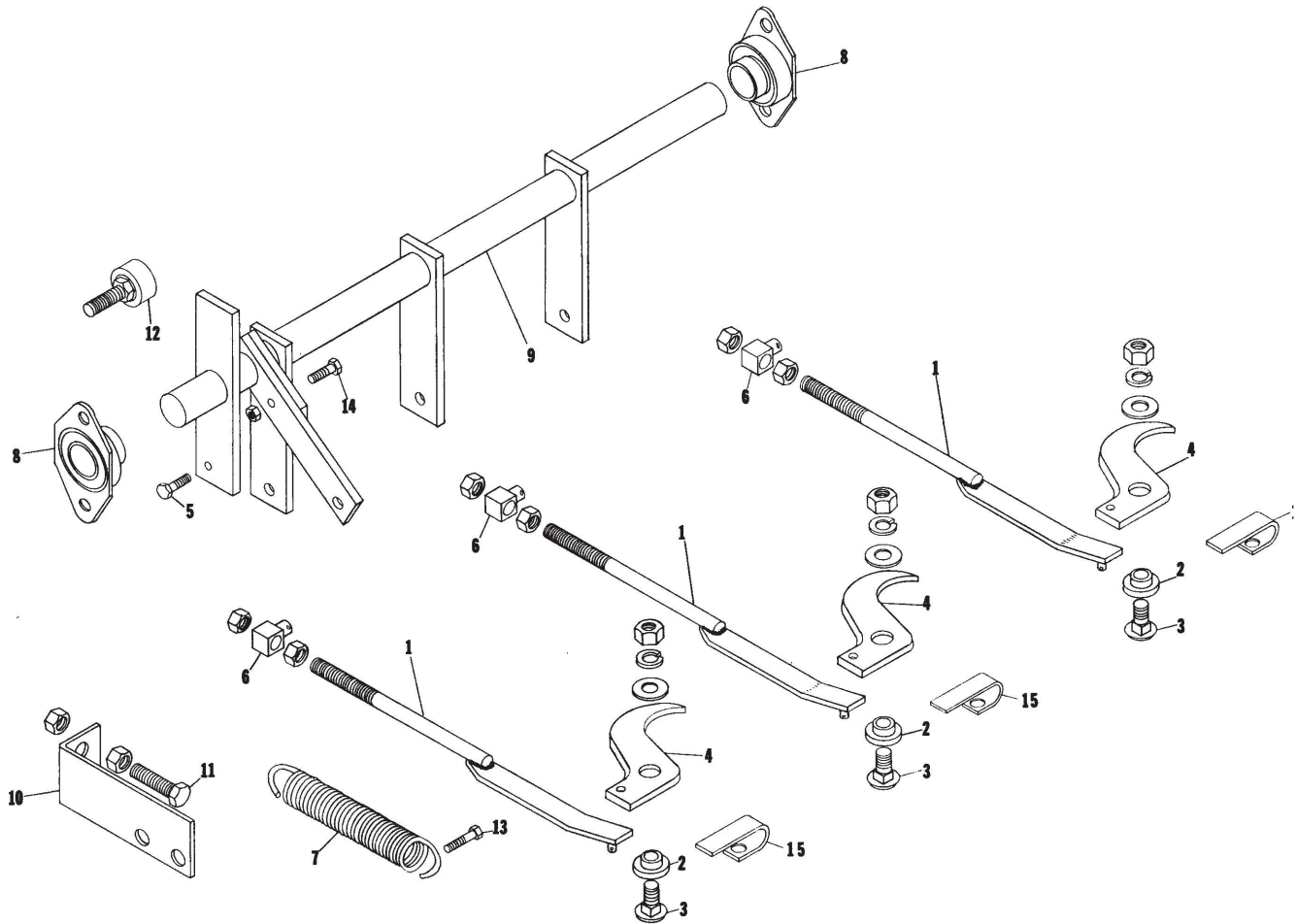
NEEDLE AND YOKE ASSEMBLY

REF. NO.	PART NO.	DESCRIPTION	REF. NO.	PART NO.	DESCRIPTION
1	F 7569	Needle guard, L. H.	16	F 7554	Needle yoke drive rod, wire
2	F 7568	Needle guard, R. H.		F 1548	Needle yoke drive rod, twine
3		3/8" x 2" N.C. Cap screw	17	F 1550	Needle yoke drive rod end, L.H. thread
4	F 7903	Needle yoke, wire	18	F 1549	Needle yoke drive rod end, R.H. thread
	F 7972	Needle yoke, twine	19	F 1552	Bolt, drive rod to needle yoke with nut
5	F 7522	Needle yoke bearing complete, L. H., wire only	20	F 1551	Bolt, drive rod to clutch with nut
				F 1574	Bolt, drive rod to R.H. needle yoke drive arm
6	F 7521	Needle yoke bearing complete, R.H. wire only	21	F 172	Spacer collar used on twine tie only
7	F 7523	Bearing for F 7521 and F 7522, KP12A wire only	22	F 7552	Bolt, needle to yoke with nut, 1/2" x 3-1/4" carriage
8	F 4150	Needle yoke bearing, R.H. and L. H., twine only	23	F 7652	Plunger dog return lever
9		1/2" x 1-3/4" NC cap screw	24	F 7845	Bushing for plunger dog return lever, 7/8" x 1" x 7/8"
		1/2" x 2-1/4" NC cap screw	25	F 1517	Plunger dog return spring
10	F 7711	Needle, wide base, wire	26	F 7524	Plunger dog return rod
11	F 1611	Needle, cast iron curved, twine	27	F 7526	Clevis for dog return rod
12	F 1702	Shim for wire needle yoke bearing	28	F 7527	Clevis pin for F 7526 clevis
	F 1701	Shim for twine needle yoke bearing	29	F 7547	Plunger stop dog
13	F 4014	Roller for needle and wire guide, 21/32" bore	30	F 7588	Plunger dog pin
14	F 4015	Bushing for F 4014 roller	31	F 7973	Holder for needle twine guide bushing
15	F 4016	Bolt, needle roller	32	F 857	Snap ring for F 856
			33	F 856	Twine guide bushing



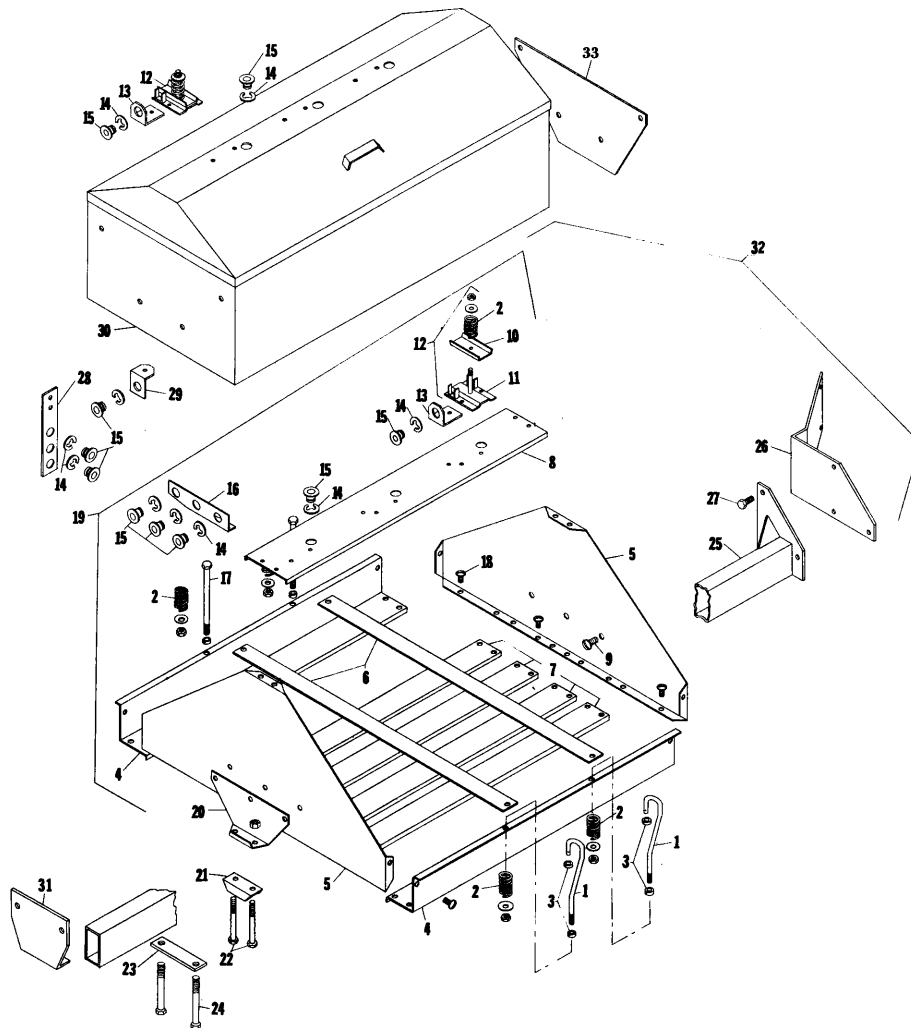
TWINE KNOTTER

REF. NO.	PART NO.	DESCRIPTION	REF. NO.	PART NO.	DESCRIPTION
1	F 7063	Knotter shaft bearing, 1-3/8"	34	F 1680	Washer, knotter worm shaft, 28 ga.
2		1-3/8" set collar		F 657	Washer, knotter worm shaft, 10 ga.
3	F 7940	Twine finger drive cam		F 658	Washer, knotter worm shaft, 14 ga.
4	F 8053	Knotter frame complete		F 659	Washer, knotter worm shaft, 18 ga.
5	F 4104	Key, 3/8" x 3/8" x 1-1/2", cam gear	35	F 7875	Knotter worm only
	F 7904	Key, 3/8" x 3/8" x 2", clutch	36	F 7876	Knotter worm and shaft complete
	F 8054	Key, 3/8" x 3/8" x 3/4", Cam	37	F 8052	Twine holder spring, 2 used
6	F 4159	Knotter shaft spacer washer, 10 ga.	38	F 7951	Twine knotter mount, L.H.
	F 4160	Knotter shaft spacer washer, 14 ga.	39	F 7952	Twine knotter mount, R.H.
	F 4161	Knotter shaft spacer washer, 18 ga.	40	F 7988	Snap ring, # 5160-137
	F 7977	Knotter shaft spacer washer, .010"	41		3/8" x 1" N.C. Cap screw
	F 7978	Knotter shaft spacer washer, .005"	42	F 7519	Clutch w/pawl, 1-3/8" shaft
7	F 7942	Knotter cam gear	43	F 1620	Clutch pawl pin lock
8	F 7943	Knotter frame only	44	F 1633	Clutch pawl pin
9	F 4136	Hardened washer, 1-3/8" I.D., 16 ga.	45	F 1622	Clutch pawl
10		1/8" P.T. straight grease fitting # 1710B	46	F 4115	Spring clutch pawl
11	F 7986	Knotter shaft, adjustable, 330T, 1-3/8"	47	F 4133	Notched clutch disc w/F4134 bearing
12	F 7976	Snap ring for knife arm pin			
13	F 7884	Knife arm pin	48	F 4134	Bearing
14	F 8050	Knife arm complete	49	F 4135	Inner race
15	F 8049	Twine knife	50	F 755	Sprocket, knotter clutch, 60A32
16	F 7859	Twine knife screw	51		3/8" x 1" NC cap screw
17	F 7860	Knife arm washer	52	F 7953	Knotter head anchor
18	F 7861	Knotter bill hook	53	F 7987	Shield for knotter clutch
	F 8068	Knotter bill hook pinion spacer washer .020"	54	F 7882	Zerk, 90°
	F 8069	Knotter bill hook pinion spacer washer, .035"	55	F 7883	Zerk straight
	F 8070	Trigger for F 7861 Knotter bill hook	56	F 1623	Washer, clutch pawl
	F 8071	Pin for F 8070 trigger	57		3/8" x 1" cap screw
19		3/8" x 1-1/4" NC Cap screw	58	F 7892	Knife arm shaft washer
20	F 1700	Pinion, knotter hook, steel cut	59	F 7893	Knife arm shaft nut
21	F 7948	Knotter hook cam adjusting screw	60	F 4159	Knotter shaft spacer washer, 10 ga.
22	F 7947	Knotter hook cam adjusting spring	61	F 4161	Knotter shaft spacer washer
23		7/16" x 1-1/2" NF Cap screw	62	F 4159	Knotter shaft spacer washer, 10 ga. (use 1)
24	F 7949	Knotter hook cam adj. screw nut		F 4160	Knotter shaft spacer washer, 14 ga. (use 2)
25	F 8051	Knotter hook cam		F 4161	Knotter shaft spacer washer, 18 ga. (use 1)
26	F 7867	Twine holder bolt			
27	F 7868	Twine holder	63		1-3/8" NF Hex nut
28	F 7869	Twine disc	64		1-3/8" NF Hex Jam nut
29	F 7870	Twine disc cleaner			
30	F 7871	Pinion, twine holder disc		F 8031	Twine knotter assy. complete w/mounts clutch assy., & brake assy.
31	F 7872	Roll pin			
32	F 7873	Pinion, knotter worm		F 8032	Twine knotter shaft assy. w/clutch & brake disc
33	F 7874	Knotter worm shaft			



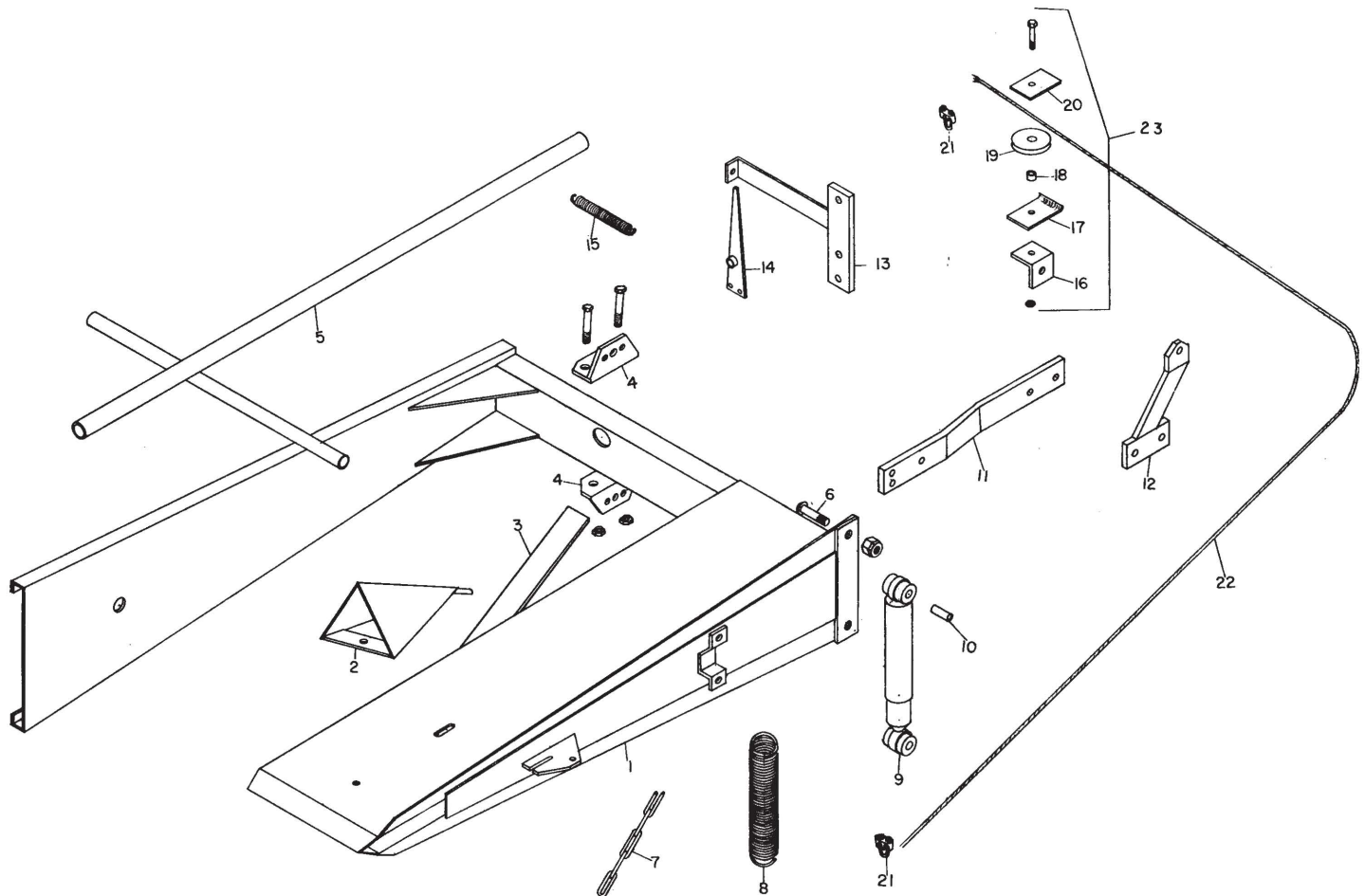
TWINE FINGER DRIVE

REF. NO.	PART NO.	DESCRIPTION
1	F 7956	Twine finger drive rod
2	F 7960	Bushing, twine finger
3		3/8" x 1-1/4" carriage bolt w/nut Grade 8
4	F 7957	Twine finger
5		1/4" x 1" NC cap screw
6	F 452	Twine finger link block
7	F 1517	Spring, twine finger return
8	F 1290	Bearing, twine finger drive rod
9	F 7958	Twine finger drive shaft assembly
10	F 7959	Twine finger stop bracket
11		3/8" x 1-1-2" NC cap screw
12	F 1572	Cam follower
13		5/16" x 1-1/2" NC cap screw
14		1/4" x 1" NC cap screw
15	F 8033	Twine finger bolt guard



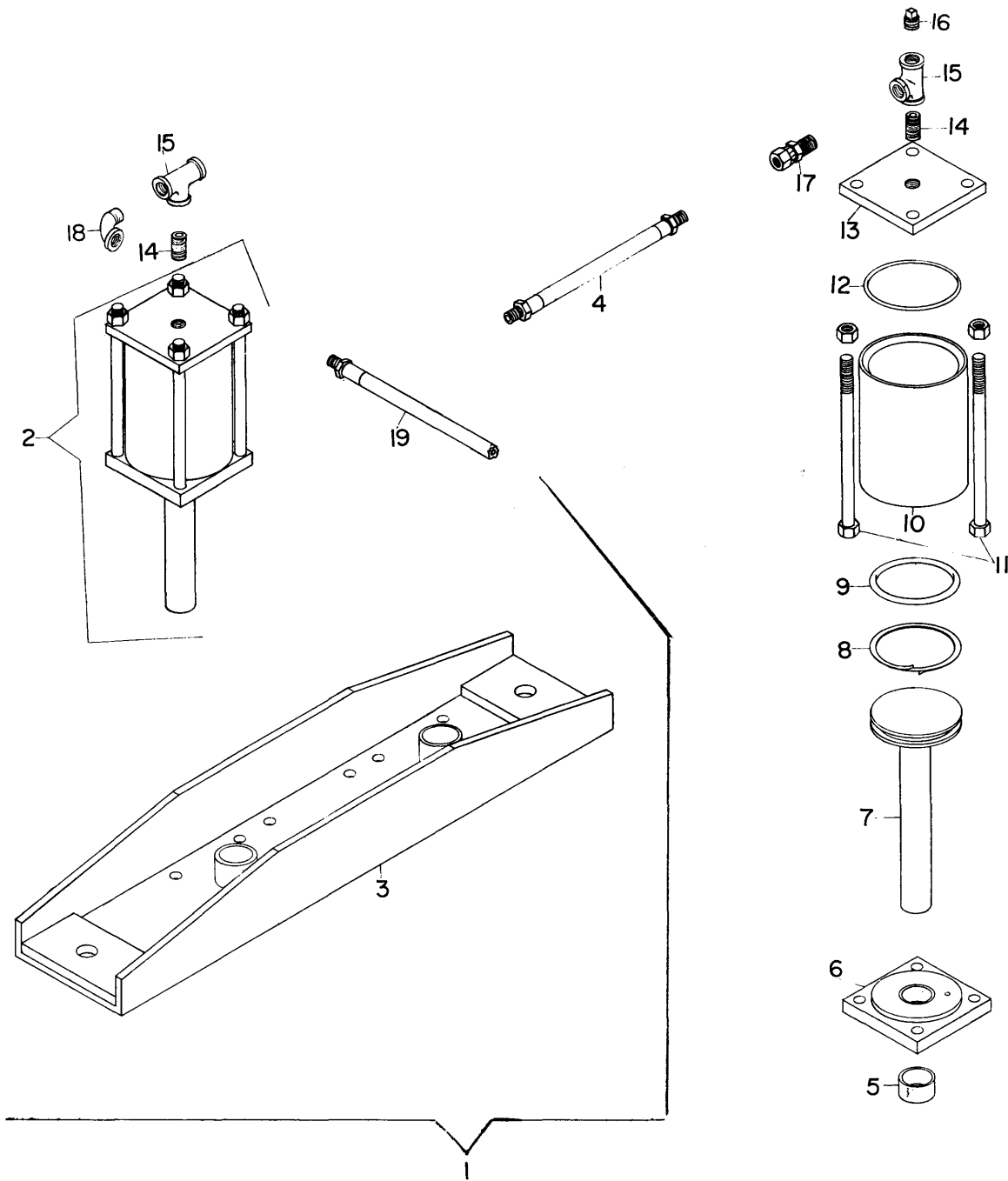
TWINE BOX AND TWINE GUIDES

REF. NO.	PART NO.	DESCRIPTION	REF. NO.	PART NO.	DESCRIPTION
1	F 7927	Twine box hold down rod	20	F 7937	Twine box bracket
2	F 7541	Spring, twine box hold down	21	F 6318	Twine box clamp
3	F 7928	Set collar, 5/16"	22		3/8" x 5" NC Cap screw
4	F 7929	Twine box side	23	F 7556	Bottom support plate for F 7555
5	F 7930	Twine box end	24		1/2" x 5-1/2" NC cap screw
6	F 7931	Twine box hold down	25	F 7938	Twine box base tube with end mount
7	F 7932	Twine box bottom	26	F 7939	Twine box mounting bracket, R.H.
8	F 7933	Twine box top section	27		3/8" x 1" NC cap screw
9		3/8" x 3/4" flat head machine screw	28	F 525	Holder for twine guide bushing
10	F 7890	Twine tension top	29	F 7973	Holder for needle twine guide bushing
11	F 7889	Twine tension base	30	F 8064	Twine box, 6 compartment, dome lid
12	F 7891	Twine tension assembly	31	F 7555	Twine box tube mounting bracket, left hand
13	F 7898	Twine guide bushing holder	32	F 7985	Twine box, 9 compartment, large plastic twine balls, complete with base tube and mounting brackets
14	F 857	Snap ring for F 856	33	F 6317	Twine box bracket
15	F 856	Twine guide bushing			
16	F 7934	Twine guide bracket			
17	F 7935	Twine box hold down bolt			
18		1/4" x 1/2" flat head machine screw			
19	F 7936	Twine box complete, 9 compartment large plastic twine ball, Ref. 1-18			



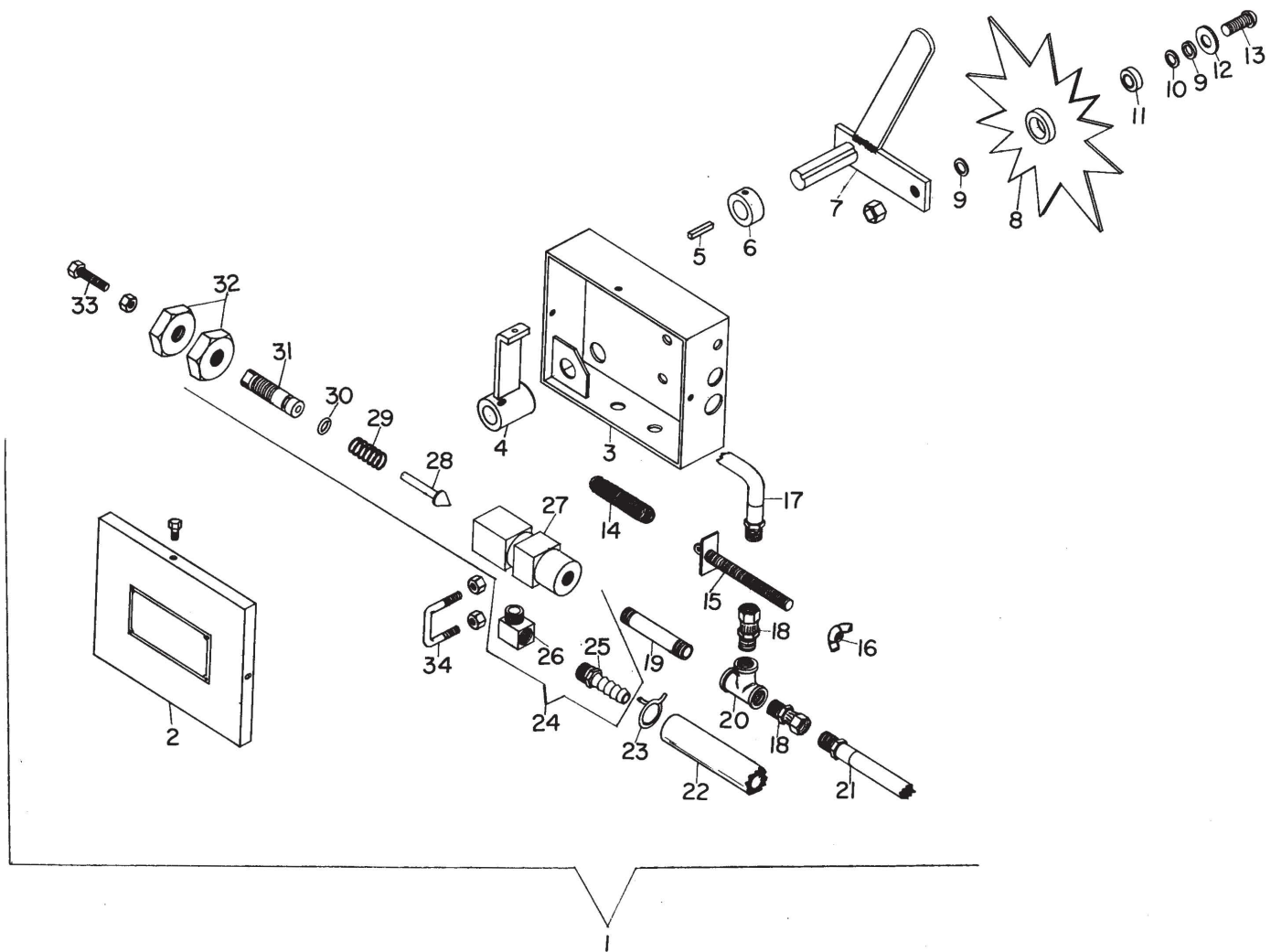
BALE CHUTE AND WEIGHT INDICATOR

REF. NO.	PART NO.	DESCRIPTION	REF. NO.	PART NO.	DESCRIPTION
1	F 7600	Bale chute, frame only	10	F 993	Bushing for shock absorber
2	F 7655	Bale turner	11	F 1638	Shock absorber support
3	F 7656	Bale skid	12	F 1639	Cable bracket
4	F 7657	Bale skid bracket, 2 used	13	F 997	Weight indicator bracket
5	F 7624	Flat chute adapter for combination chute	14	F 998	Indicator hand
6	F 7658	Button head bolt, 1/2" x 1-1/2"	15	F 268	Indicator return spring
7	F 7659	Chain, bale chute	16	F 999	Mounting angle for F 7236 sheave
8	F 985	Spring, bale chute, 3-tie turning	17	F 994	Shield for F 4067 roller
9	F 987	Spring, bale chute, 3-tie flat	18	F 4068	Bushing for F 4067 roller
	F 988	Shock absorber	19	F 4067	Roller for F 7236 sheave
			20	F 995	Plate for F 4067 roller
			21	F 990	Cable clamp, 1/8" (2 used)
			22	F 7661	Indicator cable, 1/8" aircraft 65'
			23	F 7236	Sheave complete, bale weight indicator



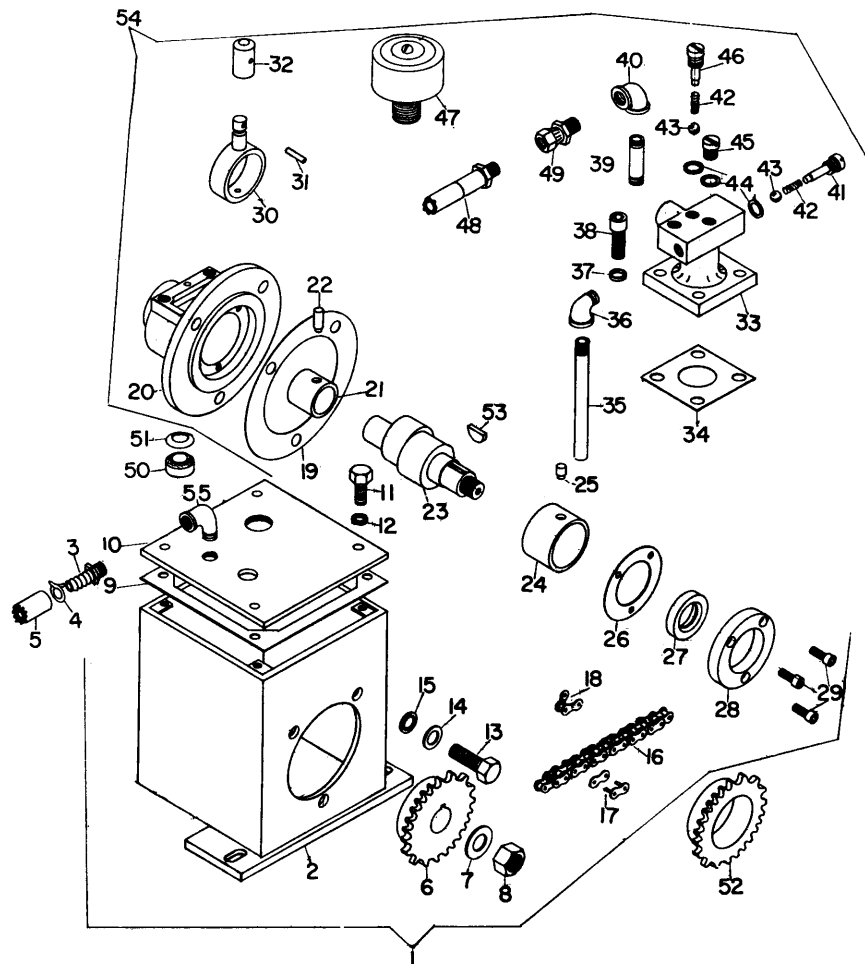
TENSION CONTROL RAM ASSEMBLY

REF. NO.	PART NO.	DESCRIPTION	REF. NO.	PART NO.	DESCRIPTION
1	FT 183	Dual ram assy., complete	9	FT 12	O-ring for piston
2	FT 198	3" cylinder complete with top and bottom	10	FT 10	Cylinder
3	FT 181	Cylinder frame	11	FT 16	Tie bolt, 3/8" x 7" N.F.H.T. with nut (4 used)
4	FT 163	Pressure hose, ram to ram, 13-1/4"	12	FT 15	O-ring top seal
5	FT 19	Bushing for FT 14 (1" x 1-1/4" x 5/8")	13	FT 13	Cylinder top
6	FT 14	Cylinder bottom with bushing	14	FT 73	Nipple, 1/4" x 1-1/2"
7	FT 11	Piston	15	FT 74	Tee, 1/4"
8	FT 137	Back up ring for FT 12 (MS-28782 -37)	16	FT 75	Pipe plug, 1/4"
			17	FT 107	Union Swivel, 1/4"
			18	FT 18	Street elbow, 1/4"
			19	FT 136	Pressure hose, bypass to ram, 24"



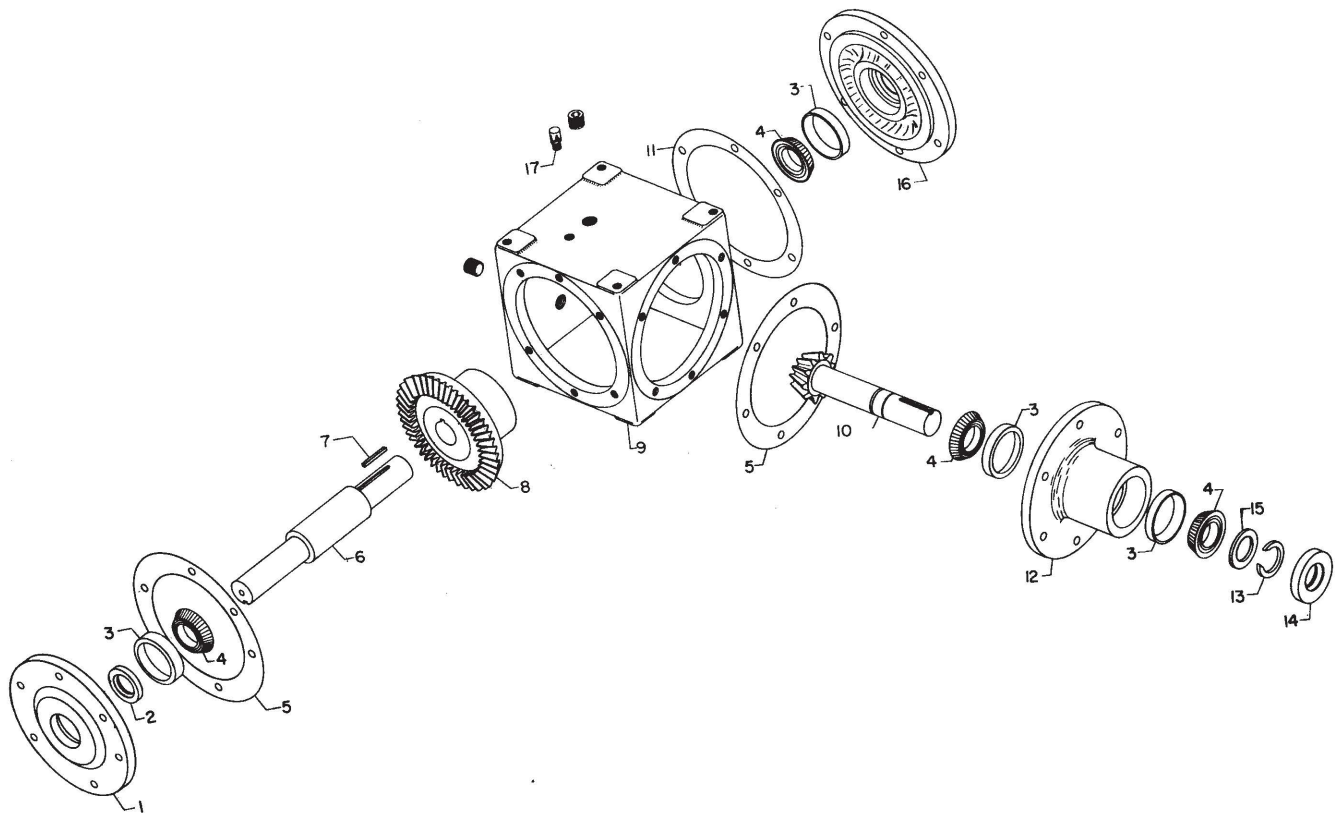
TENSION CONTROL BYPASS BOX

REF. NO.	PART NO.	DESCRIPTION	REF. NO.	PART NO.	DESCRIPTION
1	FT 192	Bypass box complete with 1/2" return hose, less pressure hose	18	FT 107	Union swivel
2	FT 50	Bypass box cover	19	FT 72	Pipe nipple, 1/4" x 3"
3	FT 194	Bypass box	20	FT 74	Tee
4	FT 67	Bypass lever	21	FT 150	Pressure hose, pump to bypass 90"
5		Key, 3/16" x 3/16" x 1"	22	FT 191	Bypass return hose, 1/2" x 93"
6	FT 68	Spacer, penetration wheel arm	23	FT 187	Hose clamp, 1/2"
7	FT 177	Penetration wheel arm	24	FT 185	Bypass assembly complete for 1/2" return hose
8	FT 178	Penetration wheel with bearing	25	FT 193	Hose nipple (1/2" hose)
9	FT 209	Washer, 14 ga., 3/8" x 5/8"	26	FT 188	3/8" street elbow, weatherhead (3400 x 3/8")
10	FT 210	Washer, 18 ga., 3/8" x 5/8"	27	FT 184	Bypass cylinder, 1/2" hose (sq. stock)
11	FT 179	Bearing, penetration wheel (BR 9904)	28	FT 87	Bypass check pin
12	FT 123	Washer, 3/8"	29	FT 63	Spring, bypass check pin
13	FT 211	Button head bolt, 3/8" x 1"	30	FT 53	O-ring, bypass
14	FT 213	Adjusting screw tension spring	31	FT 54	Plunger, less nuts
15	FT 61	Adjusting screw (eyebolt)	32	FT 55	Jam nut, 5/8"
16	FT 62	Wing nut for adjusting screw	33		1/4" x 1-1/4" N.C. cap screw
17	FT 136	Pressure hose, bypass to ram, 24"	34	FT 58	U-bolt



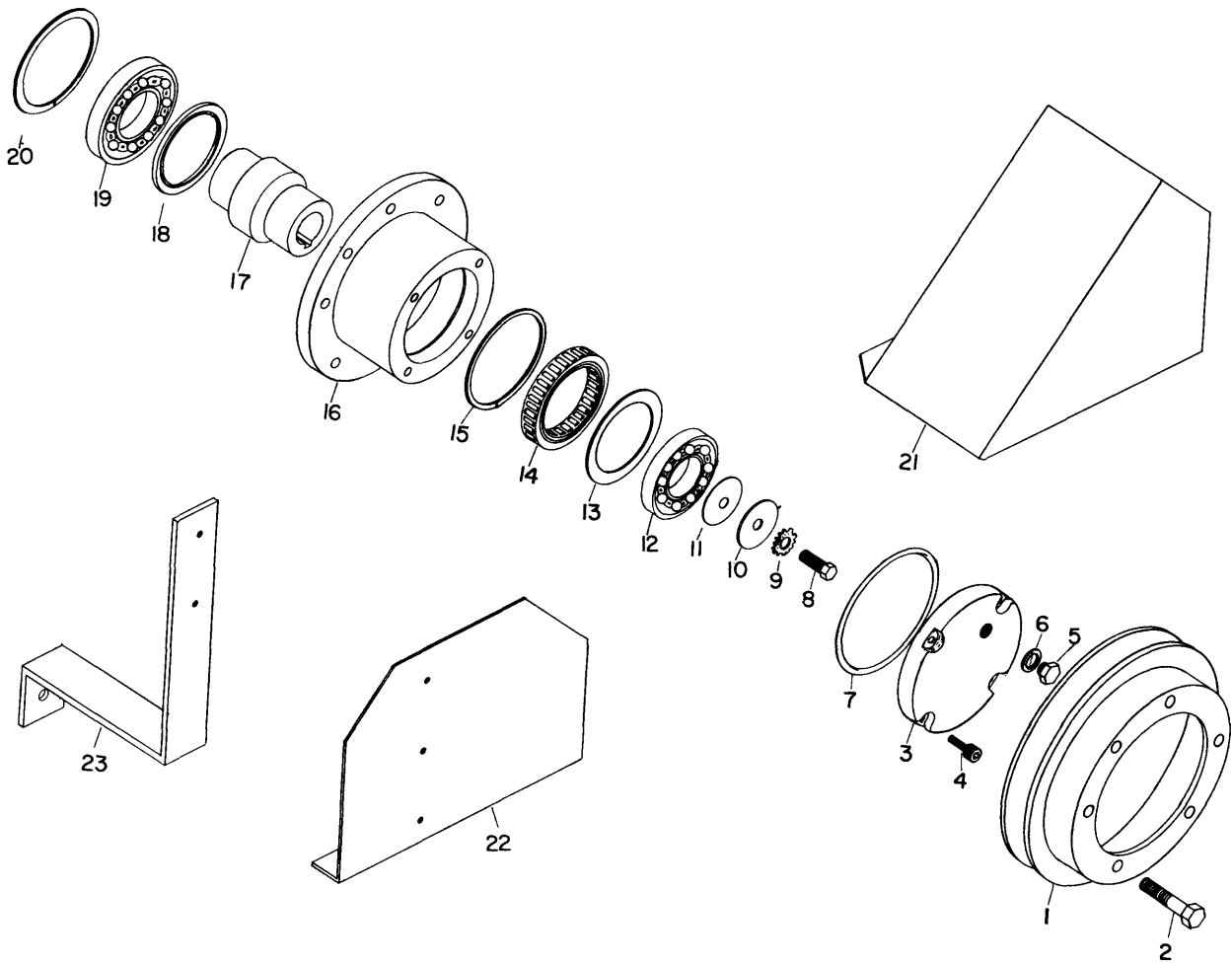
TENSION CONTROL PUMP ASSEMBLY

REF. NO.	PART NO.	DESCRIPTION	REF. NO.	PART NO.	DESCRIPTION
1	FT 537	Pump and tank assembly complete, less hose 1/2"	29		Allen screws for retaining ring 1/4" x 3/4"
2	FT 536	Tank only for 1/2" hose	30	FT 500	Connecting rod
3	FT 193	Hose nipple 1/2" hose	31	FT 506	Piston pin
4	FT 187	Hose clamp 1/2"	32	FT 505	Piston
5	FT 191	Return hose 1/2"	33	FT 524	Head
6	FT 101	Sprocket, driven 22T	34	FT 521	Head gasket
7		Flat washer 9/16"	35	FT 535	1/4" x 6" nipple
8		Nut 5/8 SAE jam	36	FT 18	Street elbow, 1/4"
9	FT 528	Tank cover gasket	37		7/16" high collar lock washer
10	FT 542	Tank cover	38		7/16" Allen screw
11		Cap screw 5/16" x 3/4" N.C.	39	FT 534	1/4" x 2" nipple
12	FT 538	Washer seal for tank cover bolts 5/16"	40	FT 82	90° elbow
13		Cap screw 7/16" x 3/4" N.C.	41	FT 517	Check valve pin (intake)
14		7/16" flat washer	42	FT 513	Check ball spring (2 used)
15	FT 539	Washer seal for pump mounting bolts 7/16"	43	FT 512	Check ball (2 used)
16	FT 197	Chain, pump drive, 69P. # 41	44	FT 514	Gasket (3 used)
17	FT 114	Connecting link, # 41	45	FT 519	Plug
18	FT 113	1/2 (offset) link, # 41	46	FT 518	Check valve pin (outlet)
19	FT 527	Pump base gasket	47	FT 530	Filter assembly
20	FT 525	Crankcase, 7/16" tapped hole	48	FT 150	Pressure hose, pump to bypass
21	FT 508	Crankshaft bushing, inner	49	FT 107	Union swivel
22	FT 510	Anchor pin for FT 508 bushing	50	FT 529	Outlet gasket
23	FT 503	Crankshaft	51	FT 533	Washer for FT 529
24	FT 509	Crankshaft bushing, outer	52	FT 157	Sprocket, drive for hydraulic pump
25	FT 511	Anchor pin for FT 509 bushing	53		Woodruff Key, 1/4" x 3/4"
26	FT 541	Gasket for FT 504 retaining ring	54	FT 523	Pump complete less tank (Ref. No's. 20 to 46 incl.)
27	FT 507	Oil seal (450045)	55		3/8" street elbow
28	FT 504	Retaining ring			



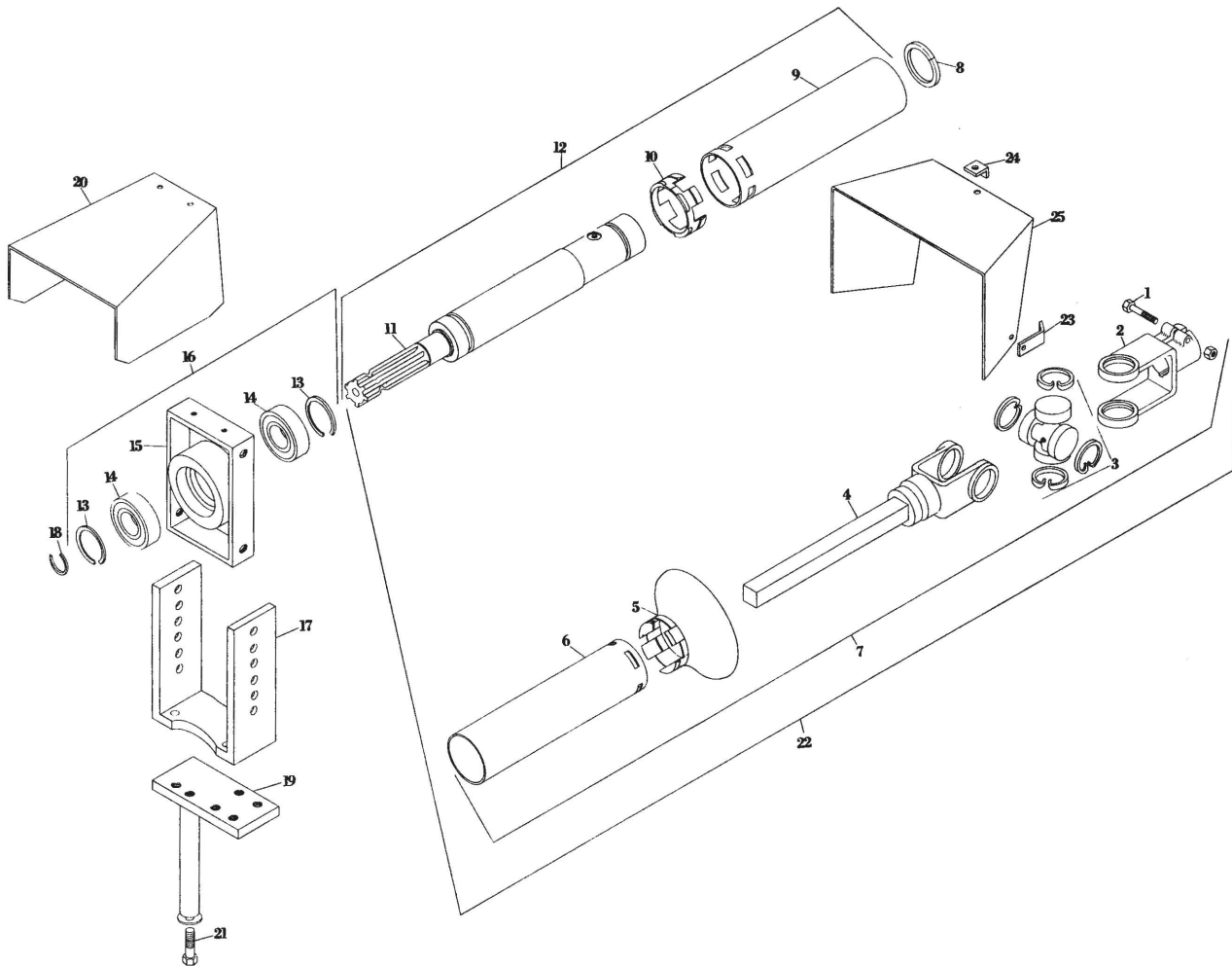
P. T. O. GEAR BOX

REF. NO.	PART NO.	DESCRIPTION	REF. NO.	PART NO.	DESCRIPTION
1	F 1076	Cap, drive shaft bearing (open end)	11	F 1417	Gasket (.005 thick) for F 1409
2	F 1085	Seal, drive shaft (CR186112)		F 1418	Gasket (.010 thick) for F 1409
3	F 1084	Bearing cup, pinion and drive shaft (LM 48510)		F 1419	Gasket (.015 thick) for F 1409
4	F 1083	Bearing cone, pinion and drive shaft (LM 48548)	12	F 1078	Housing, pinion shaft bearing
5	F 1095	Gasket, (.005 thick) for F 1076 and F 1078	13	F 1087	Snap ring, pinion shaft
	F 1414	Gasket, (.010 thick) for F 1076 and F 1078	14	F 1421	Grease seal for pinion shaft (CR256112)
	F 1415	Gasket, (.015 thick) for F 1076 and F 1078	15	F 1420	Steel shim (.003 thick)
	F 1416	Gasket, (1/32" thick) for F 1076 and F 1078	16	F 1409	Cap, drive shaft bearing (closed end)
6	F 1601	Drive shaft	17	F 1720	Vent
7	F 1093	Key, drive shaft and sheave, 5/16" x 5/16" x 2"		F 1412	Gear box complete less sheave, 540 rpm
8	F 1411	Bevel gear, 39T, for 540 rpm box		F 1413	Gear box complete with sheave, 540 rpm
	F 1778	Bevel gear, 34T, for 1000 rpm box		F 1780	Gear box complete less sheave, 1000 rpm
9	F 1407	Case for gear box		F 1781	Gear box complete with sheave, 1000 rpm
10	F 1410	Pinion and shaft, 13T for 540 rpm box			
	F 1779	Pinion and shaft 21T for 1000 rpm box			



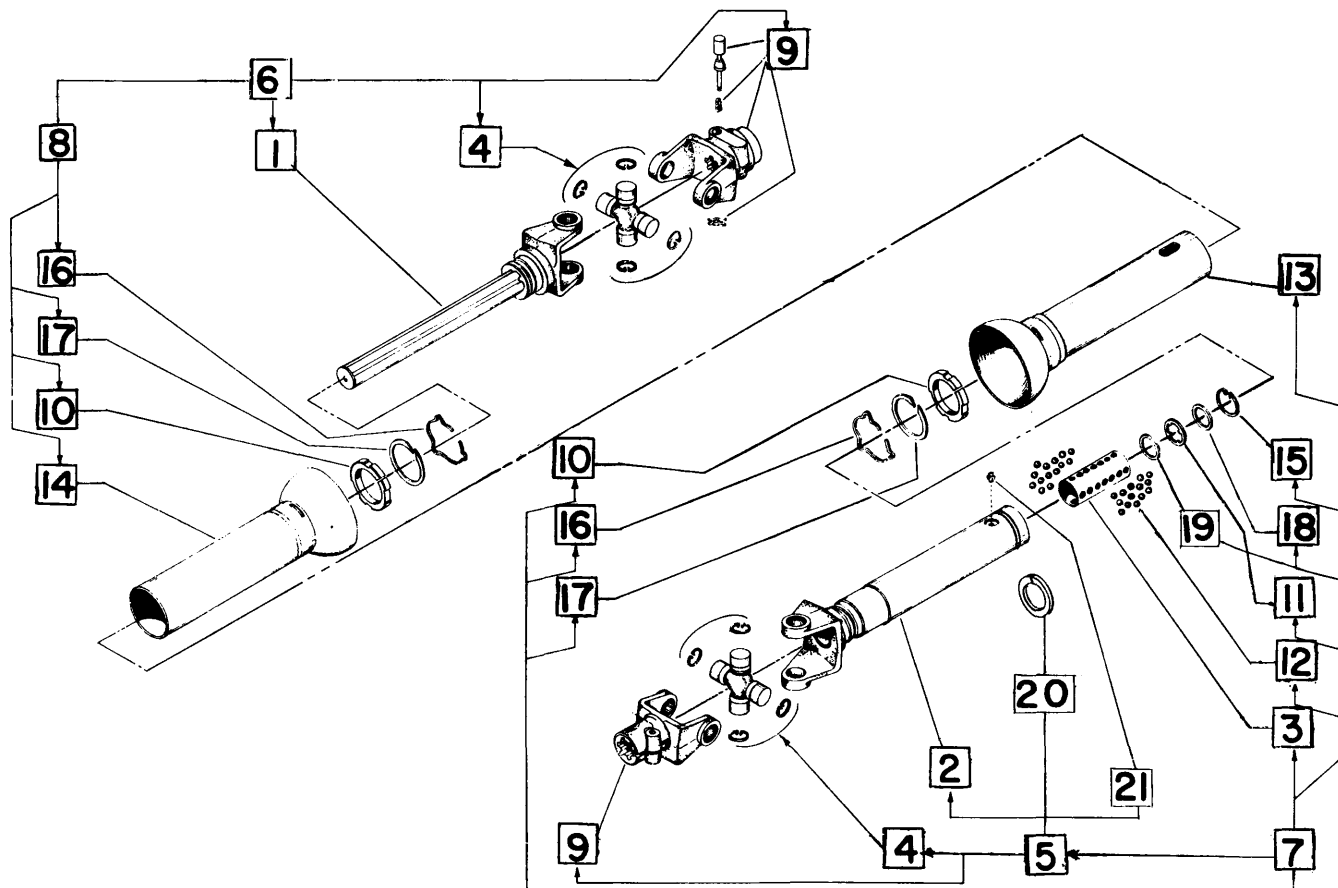
P. T. O. DRIVE SHEAVE AND CLUTCH

REF. NO.	PART NO.	DESCRIPTION	REF. NO.	PART NO.	DESCRIPTION
1	F 1161	Sheave, PTO single groove (540 RPM)	13	F 960	Thrust washer
2		1/2" x 1-1/2" N. F. H. T. cap screw	14	F 901	Clutch for F 1165 hub
3	F 952	Cap for F 1165	15	F 961	Snap ring (RR 350)
4		1/4" x 1" socket head cap screw	16	F 1165	Hub for F 1161 sheave
5	F 958	Filler plug (DP6)	17	F 951	Hub for over-running clutch
6	F 959	Gasket, filler plug	18	F 954	Seal for clutch (CR/28635)
7	FT 25	O ring seal	19	F 955	Bearing, inner w/seal (SKF 6211-RSJ)
8		3/8" x 1" N. F. H. T. cap screw	20	F 962	Snap ring (RR 393)
9		3/8" external star lock	21	F 1063	Shield for sheave
10	F 246	Washer, drive shaft end	22	F 1221	Shield for PTO flywheel
11	F 963	Gasket, drive shaft end	23	F 1222	Bracket for F 1221 shield
12	F 956	Bearing, outer (SKF 6211)			



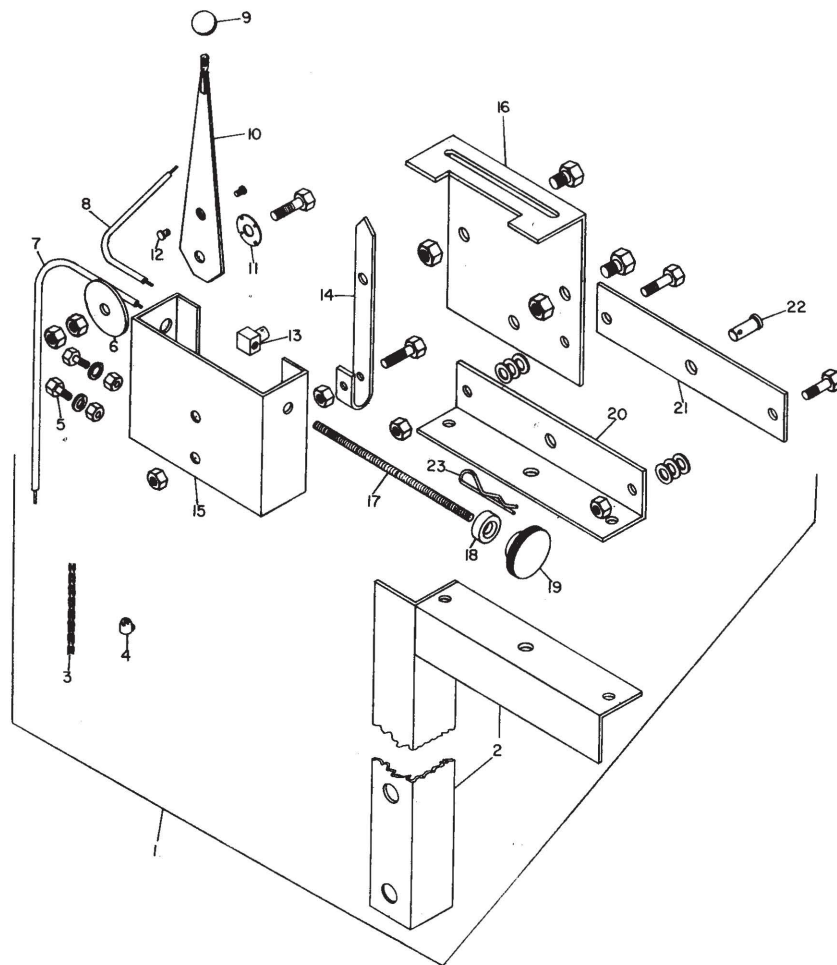
P.T.O. REAR DRIVE LINE

REF. NO.	PART NO.	DESCRIPTION	REF. NO.	PART NO.	DESCRIPTION
1		1/2" x 3" N.C. cap screw w/nut	14	F 7370	Bearing for holder (8507)
2	F 1105	Yoke only, 1-3/8" bore (2 used)	15	F 7369	Bearing holder
3	F 889	Universal cross repair kit	16	F 7368	Bearing assembly for P.T.O. drive line
4	F 8041	Yoke & shaft	17	F 7372	Bearing assembly adjusting bracket
5	F 8042	Shield bell	18	F 7361	Snap ring, external for P.T.O. shaft
6	F 8043	Inner shield tube	19	F 7692	Bearing assembly swivel bracket
7	F 8047	Square shaft, "U" joint and shield assembly	20	F 7377	Front universal joint shield
8	F 1727	Nylon support bearing	21		1/2" x 1-1/4" N.C.H.T. cap screw
9	F 8046	Outer shield tube	22	F 7979	Rear P.T.O. drive line assy. complete w/plastic shield
10	F 8045	Shield bearing	23	F 1065	Bracket for F 1066 shield, long
11	F 8044	Sleeve, tube & bearing stub	24	F 1064	Bracket for F 1066 shield, short
12	F 8048	Stub shaft, tube & shield assembly	25	F 1066	Shield for universal joint
13	F 7371	Snap ring for bearing holder			



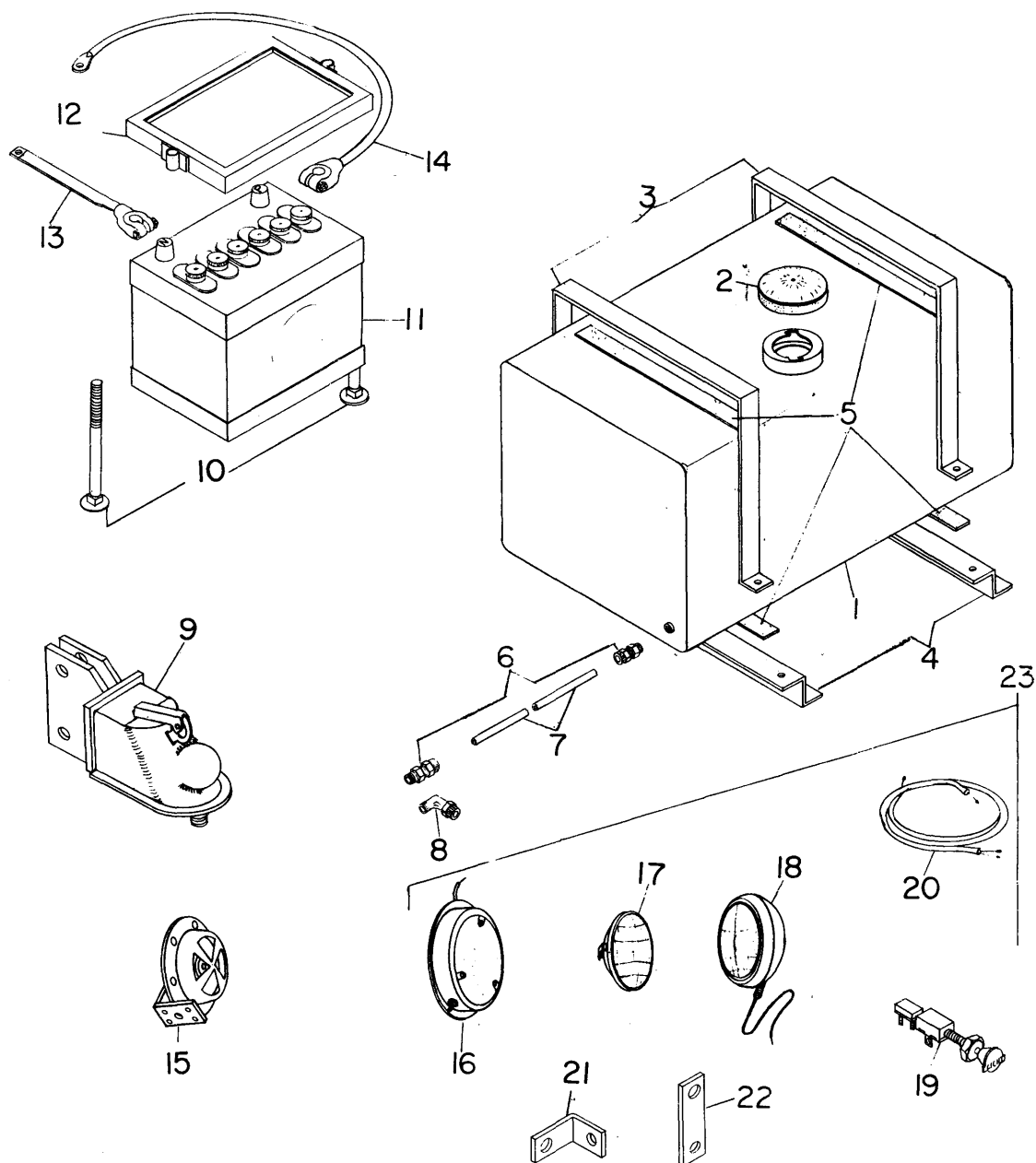
P.T.O. BALL SLIP FRONT DRIVE LINE

REF. NO.	PART NO.	DESCRIPTION	REF. NO.	PART NO.	DESCRIPTION
1	F 1755	Shaft, splined w/welded yoke	13	F 1754	Guard tube and bell, inner
2	F 1752	Tube w/welded yoke	14	F 1753	Guard tube & bell, outer
3	F 1743	Ball cage	15	F 1746	Snap ring, internal
4	F 889	Cross assembly	16	F 1728	Snap lock Ring
5	F 1756	U-joint, and tube assembly	17	F 891	Thrust washer
6	F 1757	U-joint, and spline shaft assembly	18	F 1747	Ball stop washer
7	F 1758	U-joint, tube and free-wheeling guard assy.	19	F 1745	Ball stop washer
8	F 1759	U-joint, spline shaft & free-wheeling guard assy.	20	F 1727	Nylon support bearing
9	F 890	Yoke, quick-detachable, w/1-3/8"-6B splined bore	21	F 1751	Grease fitting (5042)
10	F 892	Bearing, nylon		F 7724	Ball slip telescoping shaft assembly, 540 rpm
11	F 1749	Seal, rubber		F 7910	Telescoping drive line assembly w/21 involute spline, 1000 rpm
12	F 1744	Ball			



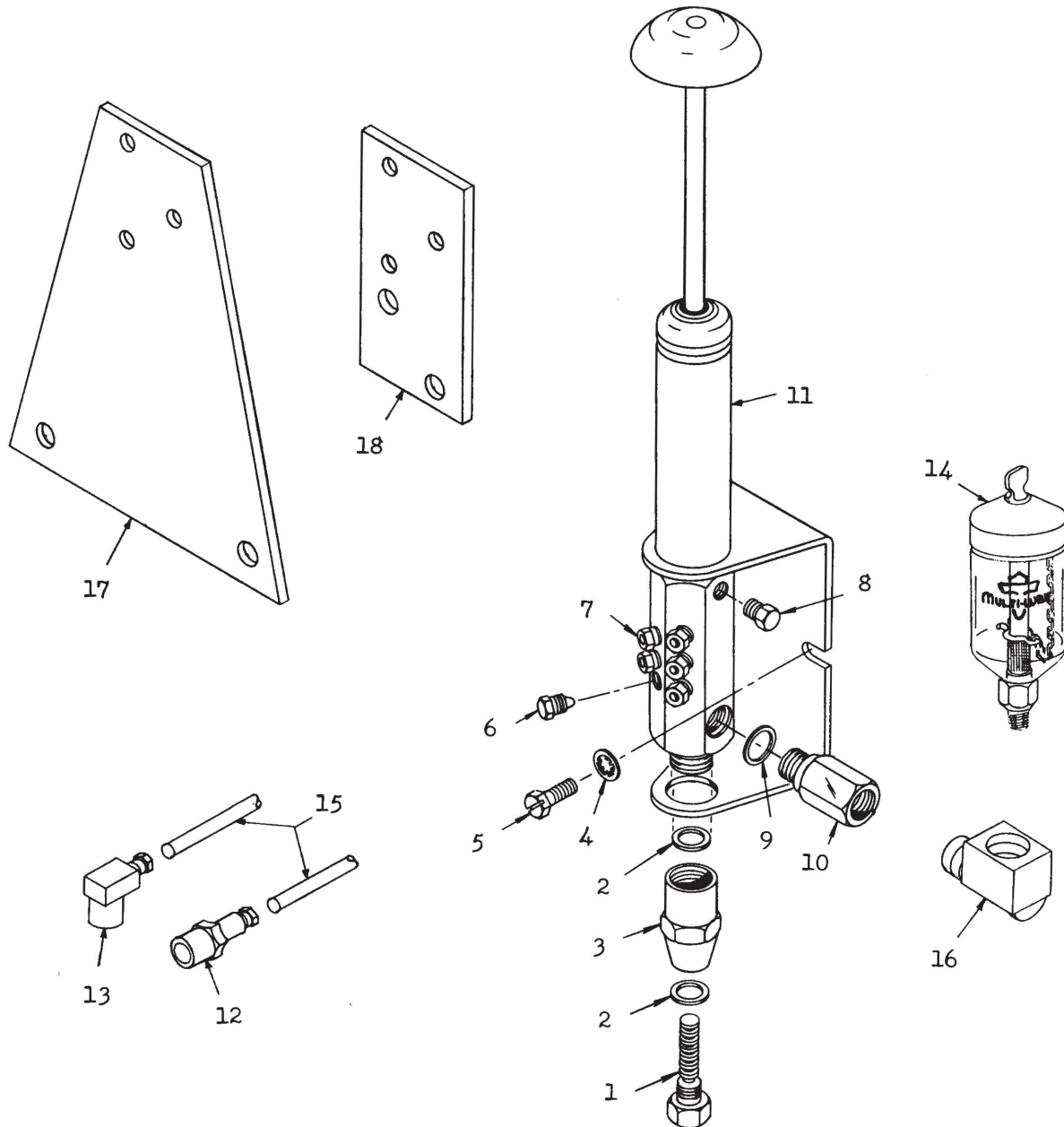
THROTTLE AND TENSION CONTROL STAND

REF. NO.	PART NO.	DESCRIPTION	REF. NO.	PART NO.	DESCRIPTION
1	F 1025	Control box complete, baler mounted	8	F 1129	Cable complete for throttle control, 12 feet
	F 1026	Control box complete, tractor mounted		F 1011	Conduit, throttle control, 12 feet
	F 1451	Control box complete less cable and standard		F 1012	Wire, throttle control, 13 feet
2	F 1658	Standard only	9	F 5554	Knob for throttle lever
3	F 1015	Chain, throttle control, 4'	10	F 1433	Throttle lever
4	F 5080	Cable stop, throttle control	11	F 1002	Conical washer
5	F 5559	Beech nut with nut and washer	12	F 5545	Swivel fasteners (throttle)
6	F 1003	Friction disc	13	F 1005	Adjusting stud nut (tension)
7	F 1130	Cable complete for tension control, 24 feet	14	F 1004	Indicator tension control
	F 1013	Conduit, tension control, 24 feet	15	F 1008	Control box
	F 1014	Wire, tension control, 25 feet	16	F 1452	Control box cover
			17	F 1006	Adjusting rod
			18	F 1131	Thrust bearing
			19	F 1007	Control knob for F 1006
			20	F 1017	Mounting base angle
			21	F 1018	Mounting base plate
			22	F 1020	Clevis pin, 3/8" x 1"
			23	F 1019	Hairpin cotter key



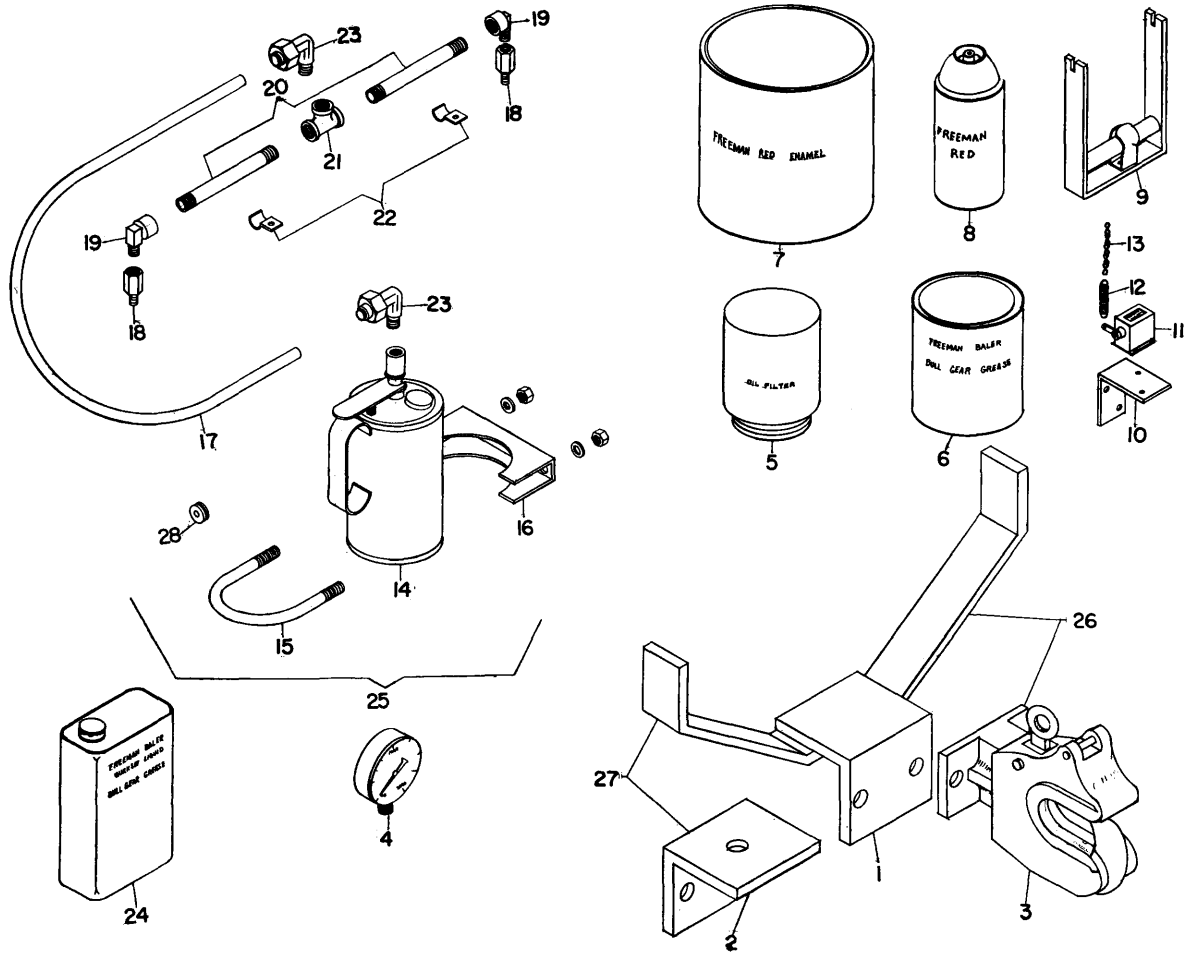
FUEL TANK, BATTERY AND LIGHTS

REF. NO.	PART NO.	DESCRIPTION	REF. NO.	PART NO.	DESCRIPTION
1	F 1688	Fuel tank with cap	15	F 1497	Horn, wire alarm, 12 volt
2	F 1689	Fuel tank cap for F 1688 and F 5947 tanks	16	F 1505	Light, flush mounted, 12 volt
3	F 7046	Fuel tank strap (2 used)	17	F 5842	Sealed beam unit, 12 volt
4	F 7212	Fuel tank mounting bracket, (2 used)		F 5941	Sealed beam unit, 12 volt (comb. red & clear)
5	F 893	Felt for tank straps - set of four	18	F 8059	Light, front and center, 12 volt, Shock mounted
6	F 5232	Straight fitting for gas line (268P-1/4" x 1/8")		F 8060	Light, rear combination, 12 volt, Shock mounted
7	F 7049	Fuel line only, 62"	19	F 862	Switch for light kit
8	F 5233	Elbow fitting for gas line (269P-1/4" x 1/8")	20	F 1777	Wiring harness for F 1667 light kit
9	F 1736	Ball hitch complete with ball	21	F 8061	Mounting bracket, front light
	F 8067	Hitch ball for F 1736	22	F 8062	Mounting bracket, rear light
10	F 1691	Bolt for battery box, (3/8" x 9")	23	F 8063	Light Kit, 12 volt with 2 - F 8059
11	F 1499	Battery, 12 volt			1 F 8060, 1 - F 1505, 1 - F 862,
12	F 5499	Battery hold down bracket			1 - F 8061, 1 - F 8062 and F 1777
13	F 7742	Battery cable (ground) 12 volt			wire harness
14	F 7743	Battery cable (insulated) 12 volt			



MULTI-LUBER CENTRALIZED LUBRICATION SYSTEM

REF. NO.	PART NO.	DESCRIPTION	REF. NO.	PART NO.	DESCRIPTION
1	F 1760	Stop plug for Multi-luber	13	F 1772	Coupler, 90° snap on for Multi-luber
2	F 1761	Gasket for Multi-luber	14	F 1773	Lubricant reservoir for Multi-luber
3	F 1762	Cap for Multi-luber	15	F 1770	Tubing, 1/8" L.P. Nylon (60 ft. used)
4	F 1763	Lock washer for Multi-luber	16	F 1782	Street elbow, 1/4"
5	F 1764	Hex screw for Multi-luber	17	F 1783	Mounting bracket for Multi-luber, twine
6	F 1765	Plug for Multi-luber	18	F 1784	Mounting bracket for Multi-luber, wire
7	F 1766	Compression nut for Multi-luber			
8	F 1767	Plug for Multi-luber			
9	F 1768	Gasket for Multi-luber			
10	F 1769	Adapter for Multi-luber			
11	F 1774	Injector pump for Multi-luber, Ref. 1-10			
12	F 1771	Coupler, straight snap on for Multi-luber		F 1776	Multi-luber complete w/reservoir, 60 ft. tubing & 12 couplers



EXTRA ITEMS

REF. NO.	PART NO.	DESCRIPTION	REF. NO.	PART NO.	DESCRIPTION
1	F 1699	Trailer hitch frame	12	F 638	Spring, bale counter
2	F 736	Trailer hitch angle for clevis pin	13	F 637	Chain, bale counter
3	F 1697	Holland hitch for trailer hitch	14	F 7671	Oil can with pump
4	F 800	Hydraulic gauge (2000 lbs.)		F 7729	Spring for pump
5	F 1511	Oil filter cartridge 4 thread base (VH4D and VG4D)	15	F 7721	U bolt, grease can
	F 5922	Oil filter cartridge (V461D)	16	F 7722	Grease can clamp base
6	F 664	Bullgear grease (2 lb. can)	17	F 7673	Nylon tubing, pull-type baler 20"
	F 874	Bullgear grease (1 gal.) 10 lbs.	18	F 777	Adapter, 2 used (51942)
7	F 649	Freeman red baler paint (1 gal.)	19	F 7677	90° brass elbow (2 used)
	F 942	Freeman red baler paint (1 qt.)	20	F 7727	1/4" x 5" pipe nipple (2 used)
	F 1675	Freeman white baler paint (1 gal.)			22" bale chamber
	F 1676	Freeman white baler paint (1 qt.)	21	FT 74	1/4" pipe tee
8	F 770	Freeman red baler paint, spray can	22	F 7723	Clip for grease nipple (125 jiffy)
	F 1677	Freeman white baler paint, spray can	23	F 7676	90° nylon elbow 2 used
9	F 4193	Wire splicer	24	F 7609	Quickset lubricant 1 qt.
10	F 7391	Bale counter mounting angle		F 7626	Quickset lubricant 1 gal.
11	F 304	Bale counter (Veeder Root)	25	F 7617	Bullgear luber kit
	F 635	Arm w/screw for F 304	26	F 734	Trailer hitch frame with Holland hitch
	F 636	Reset knob for F 304	27	F 735	Trailer hitch frame with pin hitch
			28	F 7735	Grommet

