

## Wheel Setup Instructions

**270 275**

**280 285**

**370 375**

**380 385**

---

## Index

Torque Specifications/Tire Inflation/Ground Speed .....	1
FOP0000103 RH Single 8-Hole Flotation 2 & 3 Tie .....	2-3
FOP0000104 8-Hole Flotation , 2-Tie.....	4
FOP0000108 Tandem 8-Hole Flotation LH 2 Tie .....	5
FOP0000114 Tandem 8-Hole Flotation LH 3 Tie .....	6
FOP0000162 Pickup Depth Wheel .....	7
FOP0000222 Tandem 8-Hole Flotation RH- 2/3 Tie.....	8-9
FOP0000248 Tandem 8-Hole Flotation LH- 3 Tie.....	10
FOP0000249 Single 8-Hole Highway RH-2/3 Tie .....	11-12
FOP0000250 Tandem 8-Hole Highway RH 2 Tie .....	13-14
FOP0000252 Tandem 8-Hole Highway LH 2 Tie.....	15
FOP0000253 Tire & Wheel 8-Hole Highway LH 2 Tie.....	16
FOP0000257 Flotation Tire & Wheel LH 120” Tracking 3 Tie.....	17
FOP0000259 RH Tires and Wheels Walking Beam.....	18-19
FOP0000259 LH Tires and Wheels Walking Beam .....	20
FOP0000262 LH 3 Tie Hydro PTO .....	21

## Torque Specifications



**Caution:** Make sure everyone is clear when unloading baler.



**Caution:** Make sure the baler is secure and can not drop before attaching wheel assemblies.

**Tighten all nuts and bolts to the proper torque specifications listed below.**

### Grade 8 Course Thread

BOLT SIZE	NON-PLATED (BLACK)		ZINC PLATED	
	in-lbs	ft-lbs	in-lbs	ft-lbs
1/2	1544	129	1029	86
3/4	5562	463	3708	309

### Grade 8 Fine Thread

BOLT SIZE	NON-PLATED (BLACK)		ZINC PLATED	
	in-lbs	ft-lbs	in-lbs	ft-lbs
5/8	3691	308	2461	205
3/4	6495	541	4330	361

### Grade 5 Fine Thread

BOLT SIZE	NON-PLATED (BLACK)		ZINC PLATED	
	in-lbs	ft-lbs	in-lbs	ft-lbs
9/16	1440	120	1080	90

## Single 8-Hole Flotation RH 2 & 3 Tie FOP0000103

Ref.	Part Number	Description	Quan.
1	F000007636	Spacer	3
2	Y18C-1032	CS; 5/8 UNF X 2 HX HD	4
3	219530	Hex CS NF 5/8 X 3-1/2	5
4	F000007756	PL,RH Channel	1
5	WES0006250	5/8" Star Washer	10
6	217847	Nut, Hex; 5/8 NF GR8	10
7	F000008003	Hub and Spindle 8 Hole	1
8	R13807958	CS; 5/8 UNF X 2 1/2	1
9	F000007705	RH Brace	1
10	229172	CS; 1/2 NC x 1 3/4"	1
11	239519	Washer, Flat; 1/2"	1
12	223587	Nut, ESNA; 1/2" NC	1
13	901467	Flotation Tire & Wheel	1
	F000008184	Wheel F/Flotation Tire	
	F000008028	Tire 15 8-PLY Flotation Tubeless	
14	F000008001	Lug Bolts 9/16 NF	8

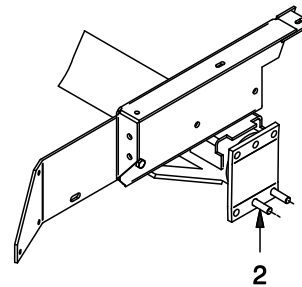


Figure 1 - Mounting Spacer

A. Place (2) of Y18C-1032 bolts through the axle as shown in Figure 1.

B. Place (5) 219530 Bolts through the Mounting Channel as shown in Figure 2. Place (3) F000007636 Spacer Plate and (1) F000008003 Hub and Spindle on the mounting channel as shown in Figure 2. Secure the hub and spacer plates to the mounting channel with 5/8" star washers and nuts. Torque all nuts and bolts as per torque chart on page 1.

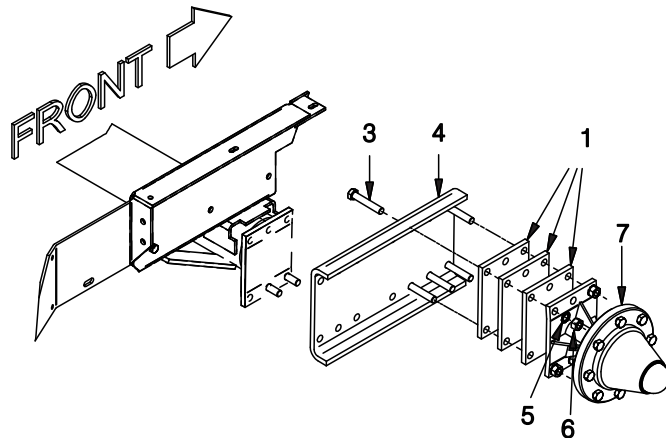


Figure 2 - Mounting Channel, Spacer's & Hub

C. Place the Mounting Channel on the axle as shown in Figure 3. Place F000007705 RH Brace as shown in Figure 3. Tighten all nuts and bolts. Mount the tire with the valve stem pointing to the inside of the baler. Torque all nuts and bolts as per torque chart on page 1.

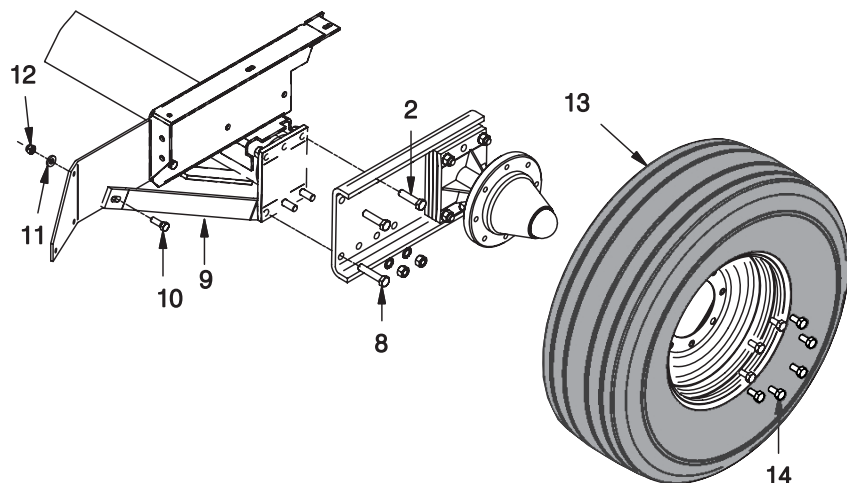


Figure 3 - Mounting Channel & Tire

## Single 8-Hole Flotation RH 2 & 3 Tie FOP0000103\*

Ref.	Part Number	Description	Quan.
1*	F000007636	Spacer	4
2	R13807958	HD CS NF 5/8 X 2-1/2	4
3	219530	Hex CS NF 5/8 X 3-1/2	5
4	F000007756	PL, RH Channel	1
5	WES0006250	5/8" Star Washer	10
6	217847	Nut, Hex; 5/8 NF GR8	10
7	F000008003	Hub and Spindle 8 Hole	1
8	R13806355	Hex HD CS NF 5/8 x 3"	1
9	F000007705	RH Brace	1
10	229172	CS; 1/2 NC x 1 3/4"	1
11	239519	Washer, Flat; 1/2"	1
12	223587	Nut, ESNA; 1/2" NC	1
13	901467	Flotation Tire & Wheel	1
	F000008184	Wheel F/Flotation Tire	
	F000008028	Tire 15 8-PLY Flotation Tubeless	
14	F000008001	Lug Bolts 9/16 NF	8

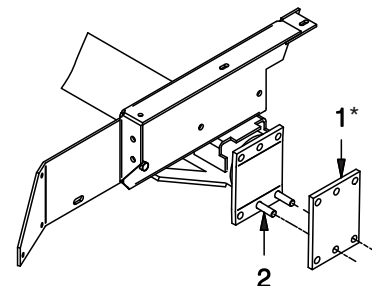


Figure 1 - Mounting Spacer

A. Place (2) of R13807958 bolts through the axle as shown in Figure 1. Place (1) F000007636 Spacer as shown in Figure 1.

B. Place (5) 219530 Bolts through the Mounting Channel as shown in Figure 2. Place (3) F000007636 Spacer Plate and (1) F000008003 Hub and Spindle on the mounting channel as shown in Figure 2. Secure the hub and spacer plates to the mounting channel with 5/8" star washers and nuts. Torque all nuts and bolts as per torque chart on page 1.

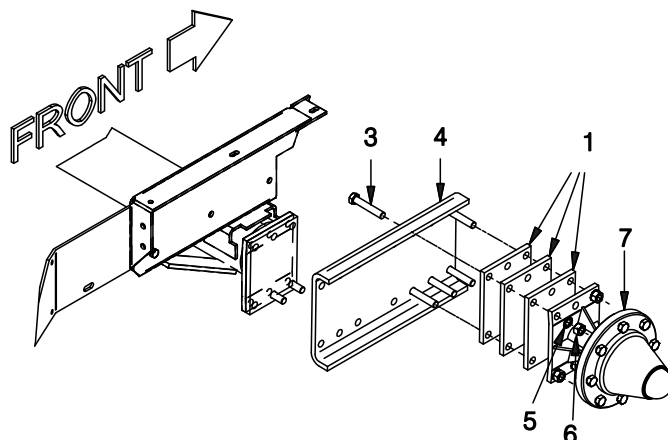


Figure 2 - Mounting Channel, Spacer's & Hub

C. Place the Mounting Channel on the axle as shown in Figure 3. Place F000007705 RH Brace as shown in Figure 3. Tighten all the nuts and bolts. Mount the tire with the valve stem pointing to the inside of the baler. Torque all nuts and bolts as per torque chart on page 1.

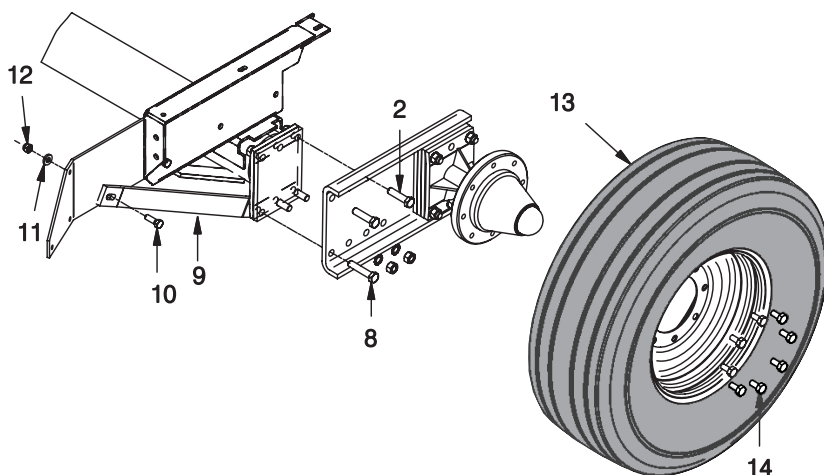
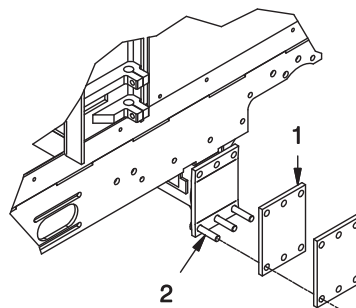


Figure 3 - Mounting Channel & Tire

\* The use of spacer F000007636 may vary, please have baler serial number available when ordering parts.

## 8-Hole Flotation LH 2-Tie FOP0000104

Ref.	Part Number	Description	Quan.
1	F000007636	Spacer	2
2	R13806355	Hex HD CS NF 5/8 x 3"	5
3	F000008003	Hub and Spindle 8 Hole	1
4	WES0006250	5/8" Star Washer	5
5	217847	Nut, Hex; 5/8 NF GR8	5
6	901467	Flotation Tire & Wheel	1
	F000008184	Wheel F/Flotation Tire	
	F000008028	Tire 15 8-PLY Flotation Tubeless	
7	F000008001	Lug Bolts 9/16 NF	8

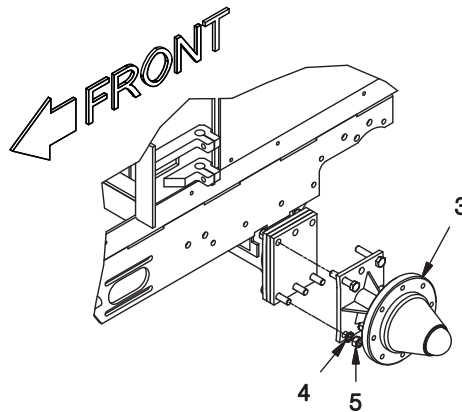


**Figure 1 - Mounting Spacer's**

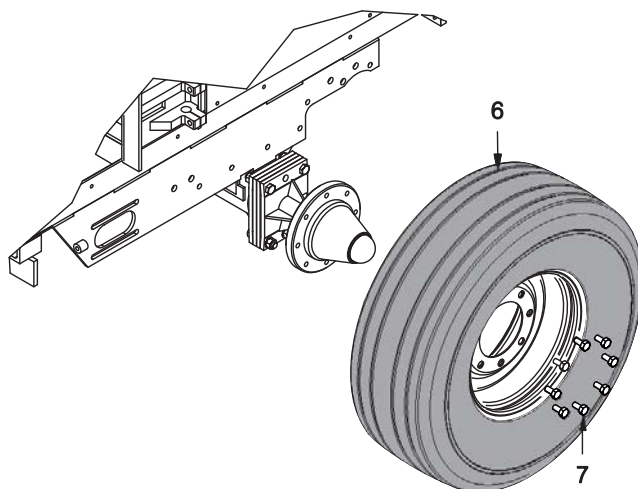
A. Place (3) R13806355 Bolts through the axle as shown in Figure 1. Place (2) F000007636 Spacer as shown in Figure 1.

B. Place (2) R13806355 Bolts through the hub as shown in Figure 2. Place hub onto axle. Torque all nuts and bolts as per torque chart on page 1.

C. Mount the tire with the valve stem pointing to the inside of the baler as shown in Figure 3. Torque all nuts and bolts as per torque chart on page 1.



**Figure 2 - Mounting Hub**



**Figure 3 - Mounting Tire**

## Tandem 8-Hole Flotation LH 2 Tie FOP0000108

Ref.	Part Number	Description	Quan.
1	901620	Tandem Wheel Plate	1
2	901675	Spacer	1
3	R13807958	GRD 8 HD CS 5/8 X 2-1/2	11
4	Y18C-1032	GRD 8 HD CS 5/8 X 2	5
5	WES0006250	5/8" Star Washer	16
6	217847	Nut, Hex 5/8 NF GR8 ZY	16
7	RD00708601	Truss Rod 75 DIA X 30	1
8	NMS0007125	Truss Rod Nut	2
9	R13809570	Jam Nut	2
10	F000007636	Spacer	2
11	F000008003	Hub and Spindle 8 Hole	2
12	901467	Flotation Tire & Wheel	2
	F000008184	Wheel F/Flotation Tire	
	F000008028	Tire 15 8-PLY Flotation Tubeless	
13	F000008001	Lug Bolts 9/16 NF	16

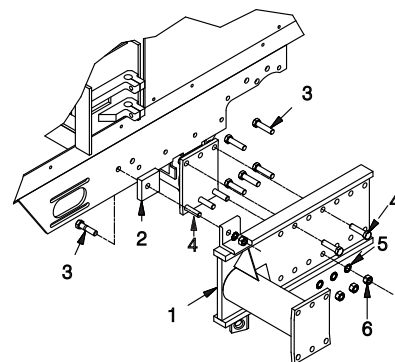


Figure 1 - Mounting Spacer & Tandem Plate

A. Place (3) Y18C-1032 Bolts through the axle as shown in Figure 1. Place (1) R13807958 Bolt through frame as shown in Figure 1. Place (1) 901620 Tandem Plate and (1) 901675 Spacer as shown in Figure 1. Place remaining bolts, star washers, and nuts on so the tandem plate and spacer are secure.

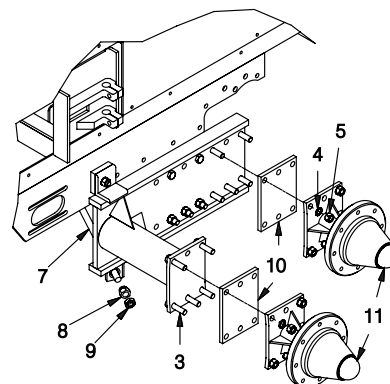


Figure 2 - Mounting Spacer Plates, Hubs & Truss Rod

B. Place (2) F000007636 Spacer Plate's on the tandem plate as shown in Figure 2. Place (2) F000008003 Hub and Spindle assemblies as shown in Figure 2. Place all bolts, star washers and nuts so the hub and spindle are secure. Torque all nuts and bolts as per torque chart on page 1. Place (1) RD00708600 Truss Rod as shown in Figure 1. Secure truss rod finger tight with (2) NMS0007125 Truss Rod nut and (2) R13809570 Jam nut.

C. Mount the tires with the valve stem pointing to the inside of the baler. Torque lug bolts (torque chart on page 1). Tighten truss rod nuts and jam nuts when tires are on the ground with all of the baler's weight on them.

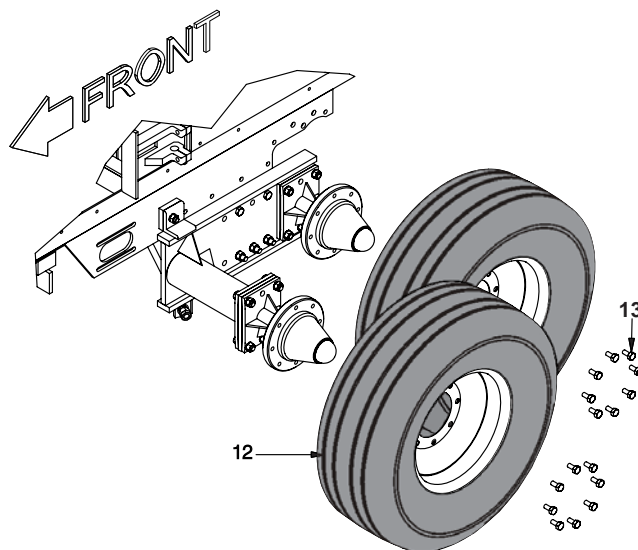


Figure 3 - Mounting Tires

## Tandem 8-Hole Flotation LH 3 Tie FOP0000114

Ref.	Part Number	Description	Quan.
1	901620	Tandem Wheel Plate	1
2	PLT0026966	Spacer	1
3	901274	Bar, Spacer	1
4	219530	CS; 5/8 UNF X 3 1/2	6
5	WES0006250	5/8" Star Washer	16
6	217847	Nut, Hex; 5/8 NF GR8 ZY	16
7	R13807958	CS; 5/8 UNF X 2 1/2	10
8	F000008003	Hub and Spindle 8 Hole	2
9	R13809570	Jam Nut	2
10	NMS0007125	Truss Rod Nut	2
11	RD00708600	Truss Rod	1
12	901467	Flotation Tire & Wheel	2
	F000008184	Wheel F/Flotation Tire	
	F000008028	Tire 15 8-PLY Flotation Tubeless	
13	F000008001	Lug Bolts 9/16 NF	16

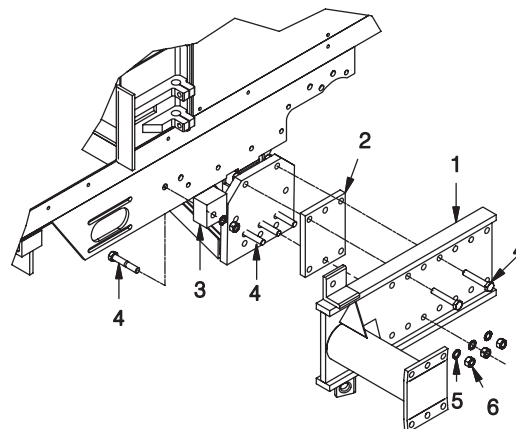


Figure 1 - Mounting Spacer Plate & Tandem Plate

A. Place (3) 219530 Bolts through the axle as shown in Figure 1. Place (1) 219530 Bolt through frame as shown in Figure 1. Place (1) PLT0026966 Spacer on axle as shown in Figure 1. Place (1) 901620 Tandem Plate and (1) 901274 Spacer as shown in Figure 1. Place the rest of the bolts, star washers and nuts on so the tandem plate and spacer are secure.

B. Place (10) R13807958 Bolts in tandem plate as shown in Figure 2. Place (2) F000007636 Spacer Plates on the tandem plate as shown in Figure 2. Place (2) F000008003 Hub and Spindle assemblies as shown in Figure 2. Place all star washers and nuts so the hub and spindle are secure. Torque all nuts and bolts as per torque chart on page 1. Place (1) RD00708600 Truss Rod as shown in Figure 1. Secure truss rod finger tight with (2) NMS0007125 Truss Rod Nut and (2) NFJ0000750 Jam nut.

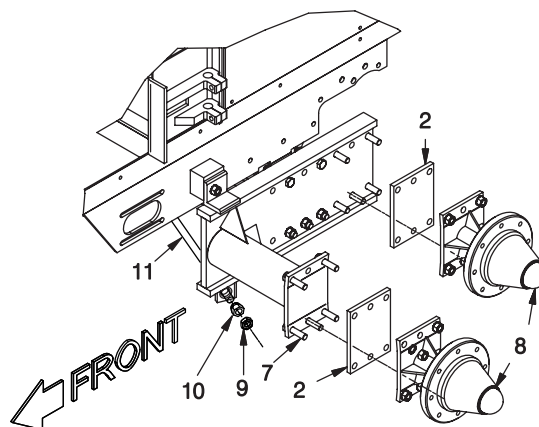


Figure 2 - Mounting Spacer Plates, Hubs & Truss Rod

C. Mount the tires with the valve stem pointing to the inside of the baler. Torque all nuts and bolts as per torque chart on page 1. Tighten truss rod nuts and jam nuts when tires are on the ground with all of the baler's weight on them.

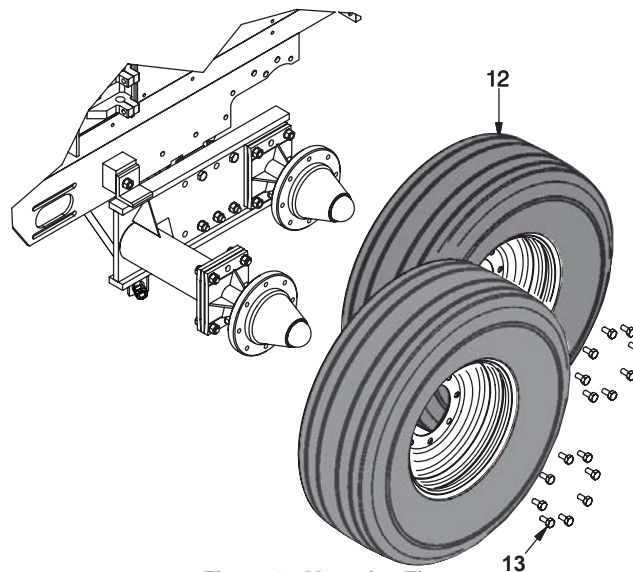


Figure 3 - Mounting Tires



## Pickup Depth Wheel FOP0000162

Ref.	Part Number	Description	Quan.
1	BKT0021956	Bracket	1
2	234665	Washer, Lock 1/2	2
3	200454W	CS; 1/2 NC X 1 1/2	2
4	WHL4103504	Tire Assy P/U Depth Wheel	1
5	224121	NUT, ESNA; 5/8 NC GR8	1

A. Place (1) BKT0021956 Bracket on the pickup as shown in Figure 1. Place (2) 234665 Lock Washers and (2) 229171 Bolts as shown in Figure 1. Torque all nuts and bolts as per torque chart on page 1.

B. Mount (1) WHL4103504 Tire Assembly on the bracket as shown in Figure 2. Place (1) 223587 ESNA nut as shown in Figure 2. Torque all nuts and bolts as per torque chart on page 1.

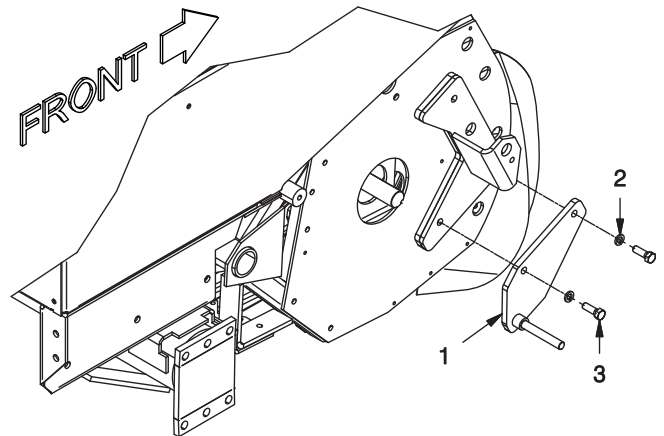


Figure 1 - Pickup Depth Wheel Bracket

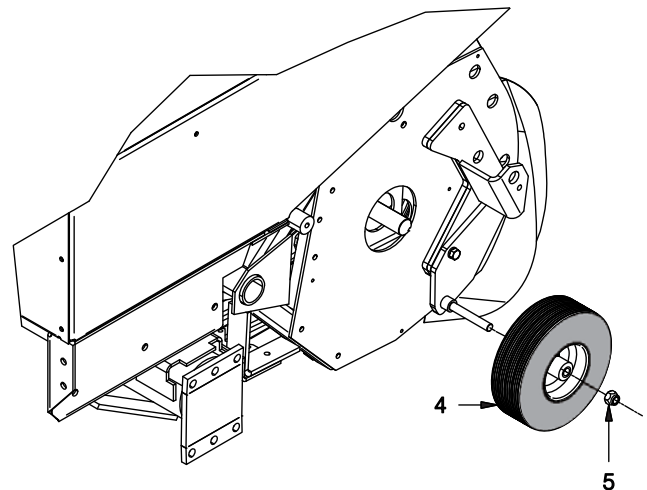


Figure 2 - Mounting Tire Assembly

## Tandem 8-Hole Flotation RH- 2/3 Tie FOP0000222

Ref.	Part Number	Description	Quan.
1	901620	Tandem Wheel Plate	1
2	F000007636	1/2" Spacer Plate	2
3	Y18C-1032	CS; 5/8 UNF X 2 HX HD	4
4	WES0006250	5/8" EXT. Star Washer	15
5	217847	5/8" Nut NF	15
6	223587	Nut, ESNA; 1/2" NC	1
7	239519	Washer, Flat; 1/2"	1
8	229172	CS; 1/2 NC x 1 3/4"	1
9	R13807958	CS; 5/8 UNF X 2 1/2	11
10	F000007705	RH Brace	1
11	F000008003	Hub and Spindle 8 Hole	2
12	901467	Tire & Wheel Assy	2
	F000008184	Wheel F/Flotation Tire	
	F000008028	Tire 15 8-PLY Flotation Tubeless	
13	F000008001	Lug Bolts 9/16 NF	16

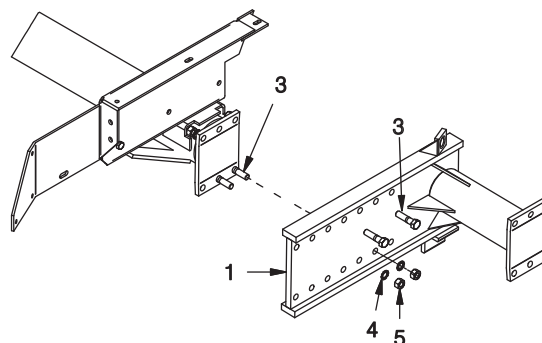


Figure 1 - Mounting Spacer Plate & Tandem Plate

A. Place (2) Y18C-1032 Bolts on the axle and tandem wheel plate as shown in Figure 1. Place (1) 901620 Tandem Wheel Plate on the axle as shown in Figure 1. Torque all nuts and bolts as per torque chart on page 1.

B. Place (1) F000007705 RH Brace on the axle as shown in Figure 2. Place (2) F000007636 Spacer Plates on the tandem plate as shown in Figure 2. Place (2) F000008003 Hub and Spindle assemblies as shown in Figure 2. Place all bolts, star washers and nuts so the hub and spindle are secure. Torque all nuts and bolts as per torque chart on page 1.

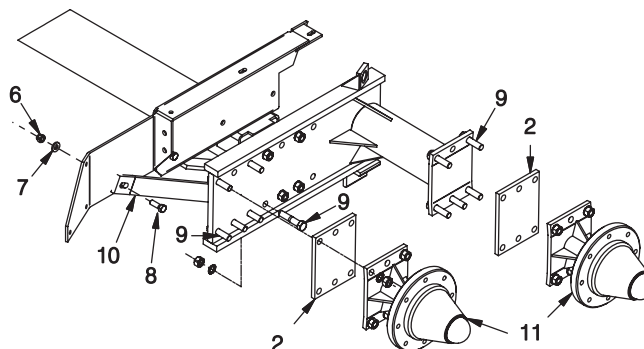


Figure 2 - Mounting Spacer Plate, Hub & Spindles

C. Mount the tires with the valve stem pointing to the inside of the baler. Torque all nuts and bolts as per torque chart on page 1.

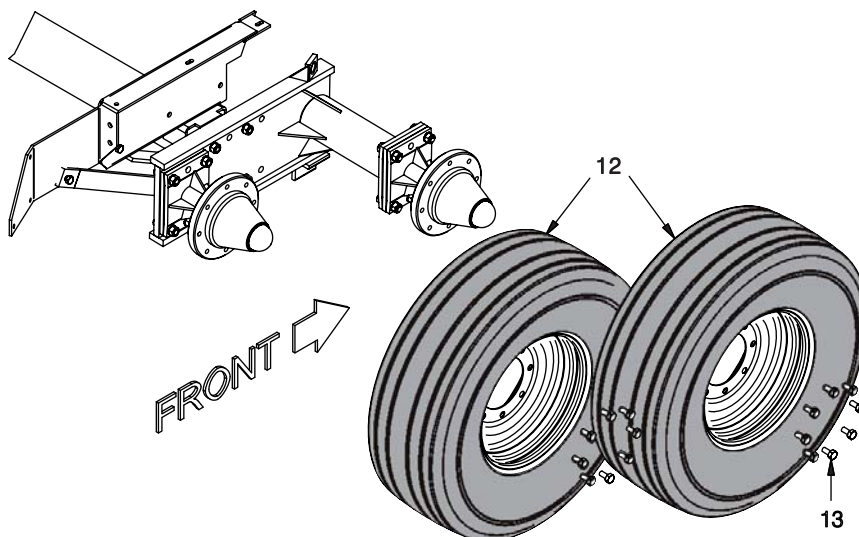


Figure 3 - Mounting Tires

## Tandem 8-Hole Flotation RH- 2/3 Tie FOP0000222\*

Ref.	Part Number	Description	Quan.
1	901620	Tandem Wheel Plate	1
2*	F000007636	1/2" Spacer Plate	3
3	R13807958	CS; 5/8 UNF X 2 1/2	14
4	WES0006250	5/8" EXT. Star Washer	15
5	217847	5/8" Nut NF	15
6	R13806355	CS; 5/8 UNF X 3	1
7	223587	Nut, ESNA; 1/2" NC	1
8	239519	Washer, Flat; 1/2"	1
9	229172	CS; 1/2 NC x 1 3/4"	1
10	F000007705	RH Brace	1
11	F000008003	Hub and Spindle 8 Hole	2
12	901467	Tire & Wheel Assy	2
	F000008184	Wheel F/Flotation Tire	
	F000008028	Tire 15 8-PLY Flotation Tubeless	
13	F000008001	Lug Bolts 9/16 NF	16

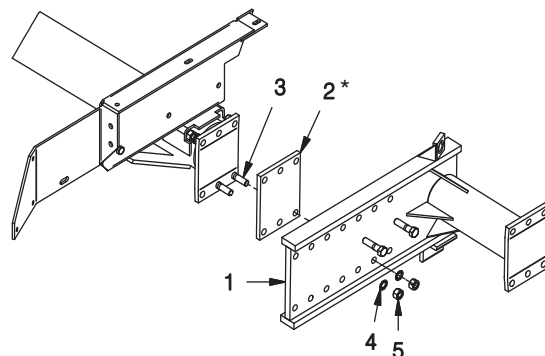


Figure 1 - Mounting Spacer Plate & Tandem Plate

A. Place (2) R13807958 Bolts on the axle and tandem wheel plate as shown in Figure 1. Place (1) F000007636 Spacer Plate and (1) 901620 Tandem Wheel Plate on the axle as shown in Figure 1. Place (2 more) R13807958 Bolts. Torque all nuts and bolts as per torque chart on page 1.

B. Place (1) F000007705 RH Brace on the axle as shown in Figure 2. Place (2) F000007636 Spacer Plates on the tandem plate as shown in Figure 2. Place (2) F000008003 Hub and Spindle assemblies as shown in Figure 2. Place all bolts, star washers, and nuts so the hub and spindle are secure. Torque all nuts and bolts as per torque chart on page 1.

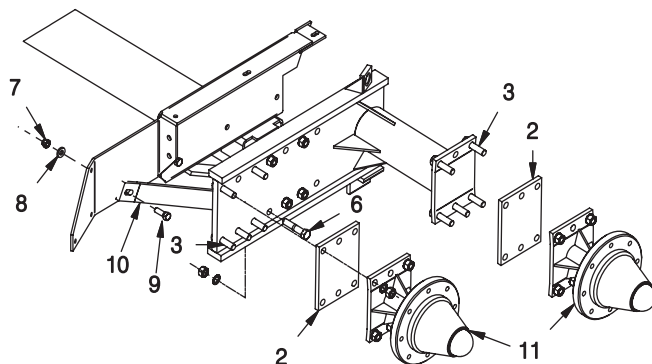


Figure 2 - Mounting Spacer Plate, Hub & Spindles

C. Mount the tires with the valve stem pointing to the inside of the baler. Torque all nuts and bolts as per torque chart on page 1.

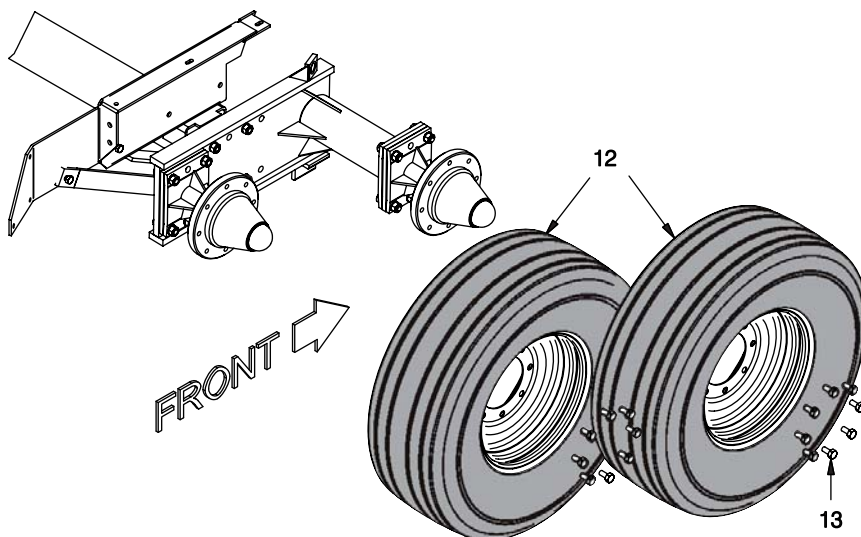


Figure 3 - Mounting Tires

\* The use of spacer F000007636 may vary, please have baler serial number available when ordering parts.

## Tandem 8-Hole Highway LH- 3 Tie FOP0000248

Ref.	Part Number	Description	Quan.
1	901626	Tandem Wheel Plate	1
2	PLT0026966	Spacer	1
3	901274	Bar, Spacer	1
4	219530	CS; 5/8 UNF X 3 1/2	6
5	WES0006250	5/8" Star Washer	16
6	217847	Nut Hex; 5/8 NF GR8 ZY	16
7	F000007636	Spacer	2
8	R13807958	CS; 5/8 UNF X 2 1/2	10
9	F000008003	Hub and Spindle 8 Hole	2
10	NMS0007125	Truss Rod Nut	2
11	R13809570	Jam Nut	2
12	RD00708600	Rod	1
13	TIR00000002	Highway Tire & Wheel Assy	2
	WHL0106897	Wheel F/Highway Tire	
	TIR7501608	Highway Tire	1
14	F000008001	Lug Bolts 9/16 NF	16

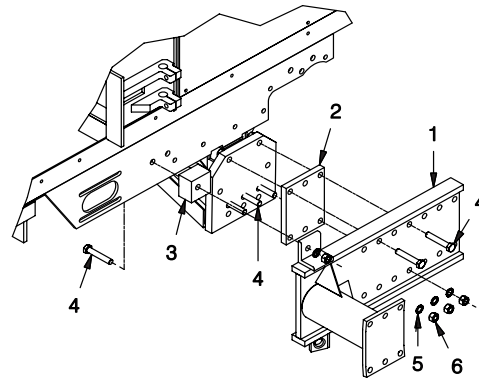


Figure 1 - Mounting Tandem Plate and Spacers

A. Place (3) 219530 Bolts through the axle as shown in Figure 1. Place (1) 219530 Bolt through frame as shown in Figure 1. Place (1) PLT0026966 Spacer, (1) 901626 Tandem Plate, and (1) 901274 Bar Spacer as shown in Figure 1. Place remaining bolts, star washers, and nuts on so the tandem plate and spacer are secure.

B. Place (2) F000007636 Spacer Plates on the tandem plate as shown in Figure 2. Place (2) F000008003 Hub and Spindle assemblies as shown in Figure 2. Place all bolts, star washers and nuts so the hub and spindle are secure. Torque all nuts and bolts as per torque chart on page 1. Place (1) RD00708600 Truss Rod as shown in Figure 1. Secure truss rod finger tight with (2) NMS0007125 Truss Rod Nut and (2) NFJ0000750 Jam nut.

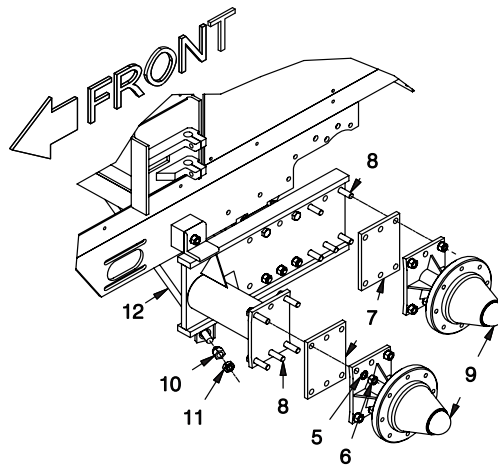


Figure 2 - Mounting Spacer Plates, Hubs & Truss Rod

C. Mount the tires with the valve stem pointing to the inside of the baler. Torque all nuts and bolts as per torque chart on page 1. Tighten truss rod nuts and jam nuts when tires are on the ground with all of the baler's weight on them.

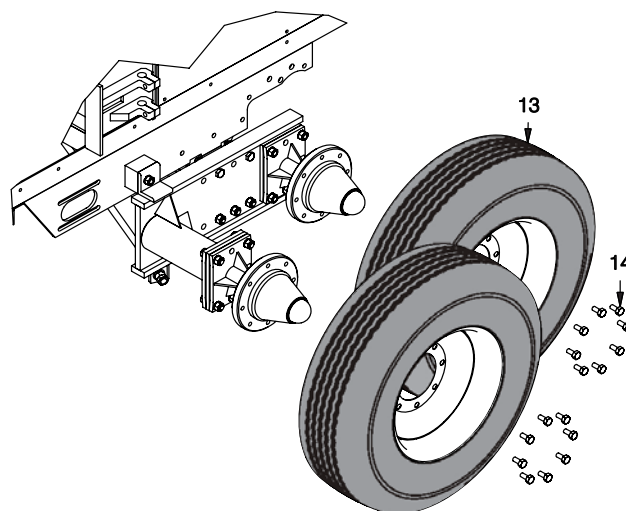


Figure 3 - Mounting Tires

## Single 8-Hole Highway RH-2/3 Tie FOP0000249

Ref.	Part Number	Description	Quan.
1	F000007636	Spacer	3
2	Y18C-1032	CS; 5/8 UNF X 2 HX HD	4
3	219530	HEX CS NF 5/8 X 3-1/2	5
4	F000007756	PL, RH Channel	1
5	WES0006250	5/8" Star Washer	10
6	217847	Nut, Hex; 5/8 NF GR8	10
7	F000008003	Hub and Spindle 8 Hole	1
8	R13807958	CS; 5/8 UNF X 2 1/2	1
9	F000007705	RH Brace	1
10	229172	CS; 1/2 NC x 1 3/4"	1
11	239519	Washer, Flat; 1/2"	1
12	223587	Nut, ESNA; 1/2" NC	1
13	TIR00000002	Highway Tire & Wheel Assy 1	
	WHL0106897	Wheel F/Highway Tire	
	TIR7501608	Highway Tire	1
14	F000008001	Lug Bolts 9/16 NF	8

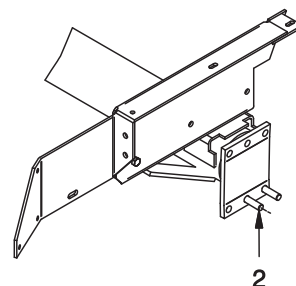


Figure 1 - Mounting Spacer Plate

A. Place (2) Y18C-1032 Bolts through the axle as shown in Figure 1.

B. Place (5) 219530 Bolts through the mounting channel as shown in Figure 2. Place 3 F000007636 Spacer Plate and 1 F000008003 Hub and Spindle on the mounting channel as shown in Figure 2. Secure the Hub and Spacer Plates to the mounting channel with 5/8" star washers and nuts.

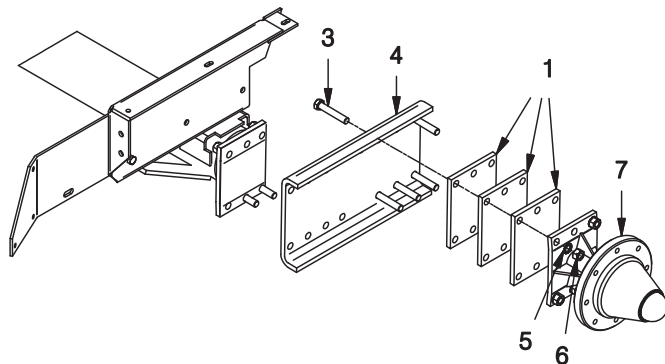


Figure 2 - Mounting Channel, Spacers and Hub

C. Place the mounting channel on the axle as shown in Figure 3. Place F000007705 RH Brace as shown in Figure 3. Torque all nuts and bolts as per torque chart on page 1. Mount the tire with the valve stem pointing to the inside of the baler. Torque lug bolts.

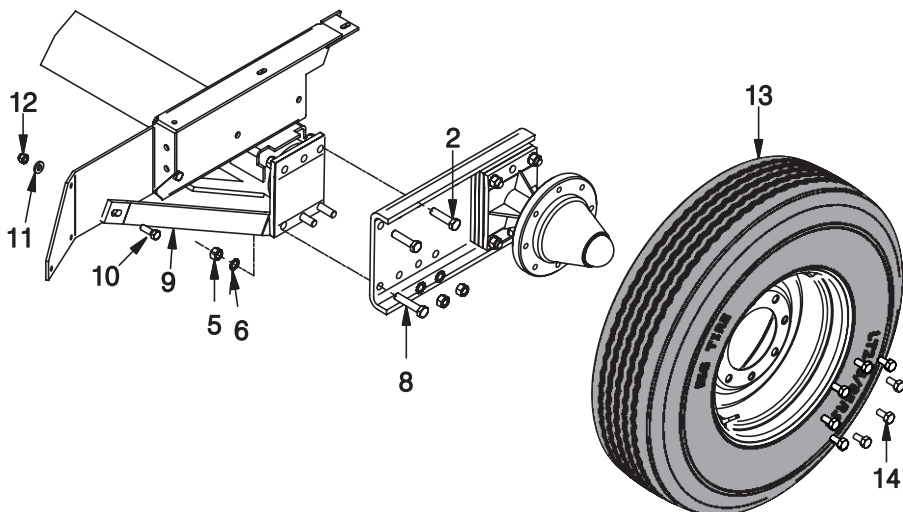


Figure 2 - Mounting Channel, Spacers and Hub



## Single 8-Hole Highway RH-2/3 Tie FOP0000249\*

Ref.	Part Number	Description	Quan.
1*	F000007636	Spacer	4
2	R13807958	HD CS NF 5/8 X 2-1/2	4
3	219530	HEX CS NF 5/8 X 3-1/2	5
4	F000007756	PL, RH Channel	1
5	WES0006250	5/8" Star Washer	10
6	217847	Nut, Hex; 5/8 NF GR8	10
7	F000008003	Hub and Spindle 8 Hole	1
8	R13806355	Hex HD CS NF 5/8 x 3"	1
9	F000007705	RH Brace	1
10	229172	CS; 1/2 NC x 1 3/4"	1
11	239519	Washer, Flat; 1/2"	1
12	223587	Nut, ESNA; 1/2" NC	1
13	TIR00000002	Highway Tire & Wheel Assy	1
	WHL0106897	Wheel F/Highway Tire	
	TIR7501608	Highway Tire	1
14	F000008001	Lug Bolts 9/16 NF	8

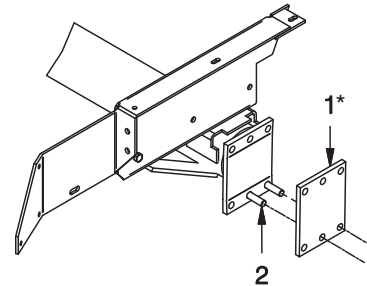


Figure 1 - Mounting Spacer Plate

A. Place (2) R13807958 Bolts through the axle as shown in Figure 1. Place (1) F000007636 Spacer as shown in Figure 1.

B. Place (5) 219530 Bolts through the mounting channel as shown in Figure 2. Place 3 F000007636 Spacer Plate and 1 F000008003 Hub and Spindle on the mounting channel as shown in Figure 2. Secure the Hub and Spacer Plates to the mounting channel with 5/8" star washers and nuts.

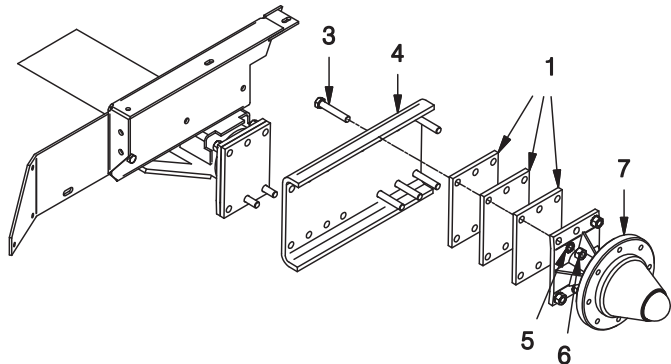


Figure 2 - Mounting Channel, Spacers and Hub

C. Place the mounting channel on the axle as shown in Figure 3. Place F000007705 RH Brace as shown in Figure 3. Torque all nuts and bolts as per torque chart on page 1. Mount the tire with the valve stem pointing to the inside of the baler. Torque lug bolts.

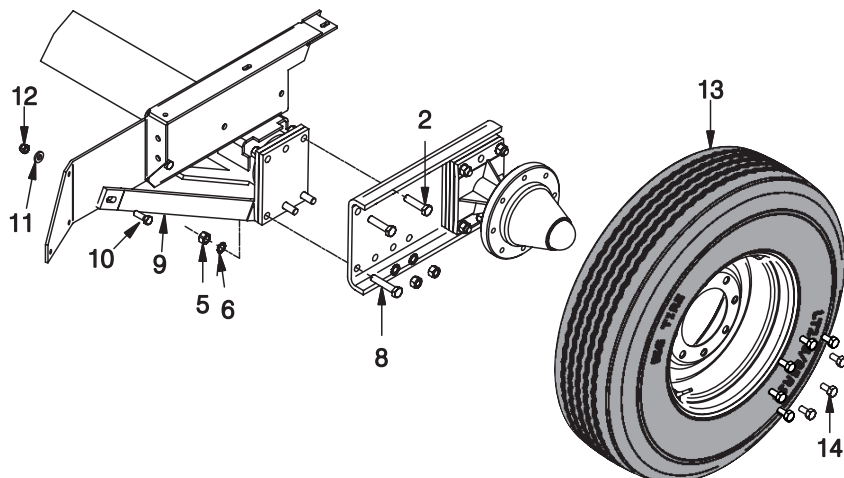


Figure 3 - Mounting the Hub and Tire

\* The use of spacer F000007636 may vary, please have baler serial number available when ordering parts.

## Tandem 8-Hole Highway RH 2 Tie FOP0000250

Ref.	Part Number	Description	Quan.
1	901626	Tandem Wheel Plate	1
2	F000007636	Spacer	2
3	Y18C-1032	CS; 5/8 UNF X 2 HX HD	4
4	WES0006250	5/8" Star Washer	15
5	217847	Nut, Hex; 5/8 NF GR8 ZY	15
6	F000007705	RH Brace	1
7	221569W	CS 1/2 UNC X 1 3/4	1
8	239519	Washer, Flat; 1/2	1
9	223587	Nut, ESNA; 1/2 NC	1
10	R13806355	CS; 5/8 UNF X 3	1
11	R13807958	HD CS NF 5/8 X 2-1/2	10
12	F000008003	Hub and Spindle 8 Hole	2
13	TIR0000002	Highway Tire & Wheel Assy	2
	WHL0106897	Wheel F/Highway Tire	
	TIR7501608	Highway Tire	1
14	F000008001	Lug Bolts 9/16 NF	16

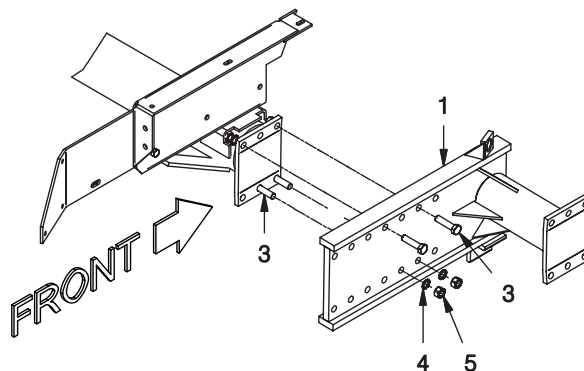


Figure 1 - Place Spacer and Tandem Wheel Plate

A. Place (2) Y18C-1032 Bolts through the axle and (2) through 901626 Tandem Plate as shown in Figure 1. Place (1) 901626 Tandem Plate as shown in Figure 1. Place the rest of the bolts, star washers and nuts on so the tandem plate is secure.

B. Place (2) F000007636 Spacer Plates on the tandem plate as shown in Figure 2. Place (2) F000008003 Hub and Spindle assemblies as shown in Figure 2. Place all bolts, star washers and nuts so the hub and spindle are secure. Place (1) F000007705 RH Brace on the axle as shown in Figure 1. Torque all nuts and bolts as per torque chart on page 1.

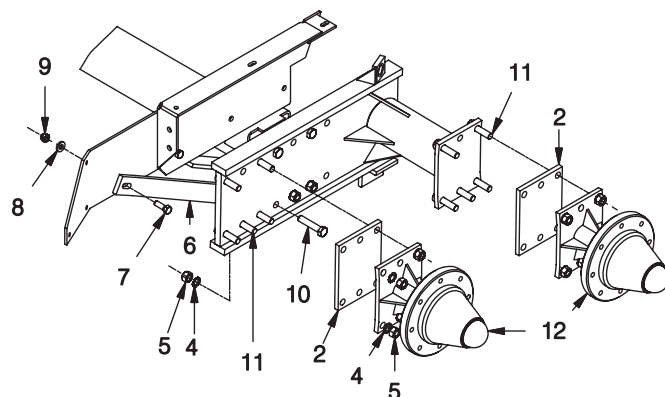


Figure 2 - Place Spacers, Brace and Hubs

C. Mount the tires with the valve stem pointing to the inside of the baler. Torque all nuts and bolts as per torque chart on page 1.

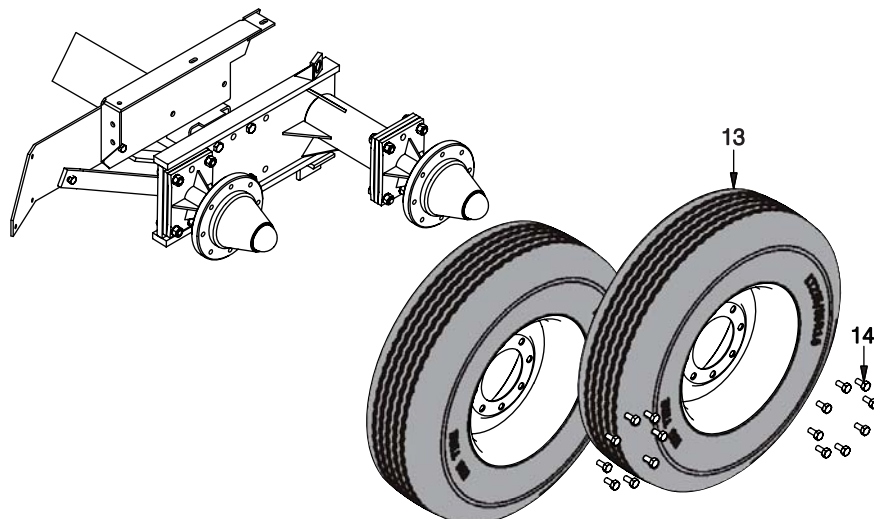


Figure 3 - Mounting Tires

## Tandem 8-Hole Highway RH 2 Tie FOP0000250\*

Ref.	Part Number	Description	Quan.
1	901626	Tandem Wheel Plate	1
2*	F000007636	Spacer	3
3	R13807958	GRD 8 HD CS 5/8 X 2-1/2	14
4	WES0006250	5/8" Star Washer	15
5	217847	Nut, Hex; 5/8 NF GR8 ZY	15
6	F000007705	RH Brace	1
7	221569W	CS 1/2 UNC X 1 3/4	1
8	239519	Washer, Flat; 1/2	1
9	223587	Nut, ESNA; 1/2 NC	1
10	R13806355	CS; 5/8 UNF X 3	1
11	F000008003	Hub and Spindle 8 Hole	2
12	TIR00000002	Highway Tire & Wheel Assy	2
	WHL0106897	Wheel F/Highway Tire	
	TIR7501608	Highway Tire	1
13	F000008001	Lug Bolts 9/16 NF	16

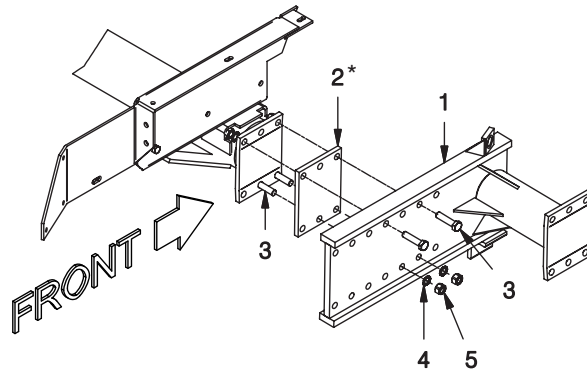


Figure 1 - Place Spacer and Tandem Wheel Plate

A. Place (2) R13807958 Bolts through the axle and (2) through 901626 Tandem Plate as shown in Figure 1. Place (1) 901626 Tandem Plate and (1) 901675 Spacer as shown in Figure 1. Place the rest of the bolts, star washers and nuts on so the tandem plate and spacer are secure.

B. Place (2) F000007636 Spacer Plates on the tandem plate as shown in Figure 2. Place (2) F000008003 Hub and Spindle assemblies as shown in Figure 2. Place all bolts, star washers and nuts so the hub and spindle are secure. Place (1) F000007705 RH Brace on the axle as shown in Figure 1. Torque all nuts and bolts as per torque chart on page 1.

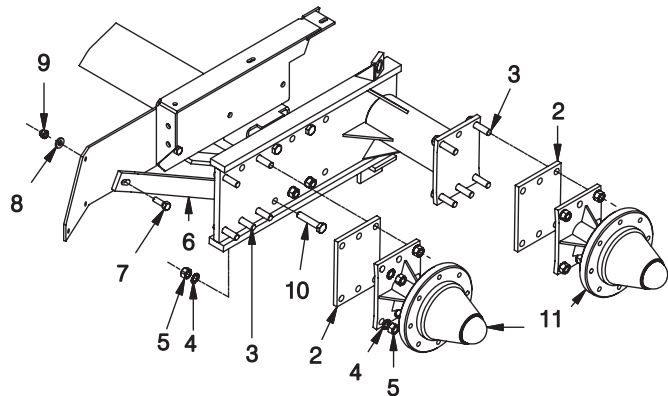


Figure 2 - Place Spacers, Brace and Hubs

C. Mount the tires with the valve stem pointing to the inside of the baler. Torque all nuts and bolts as per torque chart on page 1.

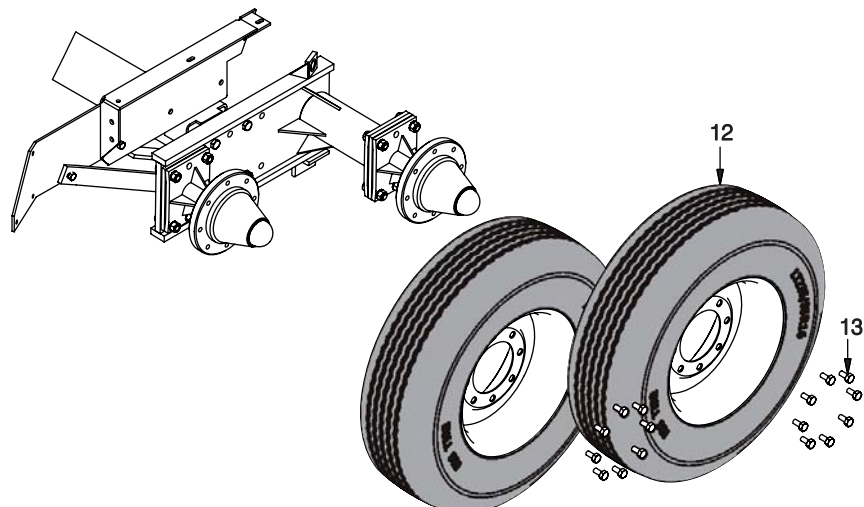


Figure 3 - Mounting Tires

\* The use of spacer F000007636 may vary, please have baler serial number available when ordering parts.



## Tandem 8-Hole Highway LH 2 Tie FOP0000252

Ref.	Part Number	Description	Quan.
1	901626	Tandem Wheel Plate	1
2	901675	Spacer	1
3	R13807958	GRD 8 HD CS 5/8 X 2-1/2	11
4	Y18C-1032	CS; 5/8 UNF X 2 HX HD	5
5	WES0006250	5/8" Star Washer	16
6	217847	Nut, Hex; 5/8 NF GR8 ZY	16
7	F000007636	Spacer	2
8	F000008003	Hub and Spindle 8 Hole	2
9	RD00708601	Truss Rod 75 DIA X 30	1
10	NMS0007125	Truss Rod Nut	2
11	R13809570	Jam Nut	2
12	TIR00000002	Highway Tire & Wheel Assy 2	
	WHL0106897	Wheel F/Highway Tire	
	TIR7501608	Highway Tire	
13	F000008001	Lug Bolts 9/16 NF	16

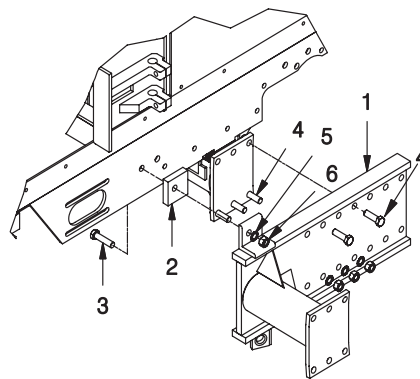


Figure 1 - Mounting Tandem Wheel Plate

A. Place (3) Y18C-1032 Bolts through the axle as shown in Figure 1. Place (1) R13807958 bolt through frame as shown in Figure 1. Place (1) 901626 Tandem Plate and (1) 901675 Spacer as shown in Figure 1. Place the rest of the bolts, star washers and nuts on so the tandem plate and spacer are secure.

B. Place (2) F000007636 Spacer Plates on the tandem plate as shown in Figure 2. Place (2) F000008003 Hub and Spindle assemblies as shown in Figure 2. Place all bolts, star washers and nuts so the hub and spindle are secure. Torque all nuts and bolts as per torque chart on page 1. Place (1) RD00708601 Truss Rod as shown in Figure 1. Secure truss rod finger tight with (2) NMS0007125 Truss Rod Nut and (2) NFJ0000750 Jam nut.

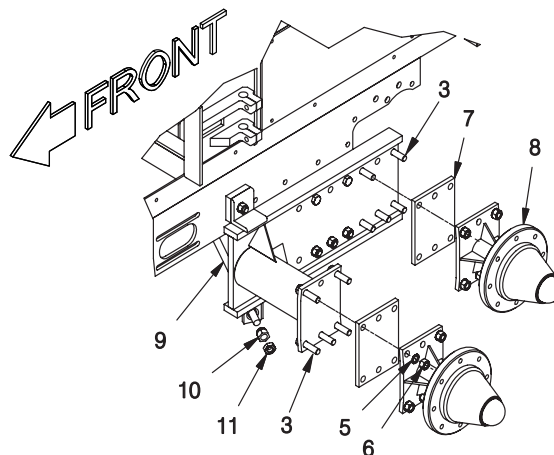


Figure 2 - Mounting Spacer Plates, Hubs & Truss Rod

C. Mount the tires with the valve stem pointing to the inside of the baler. Torque all nuts and bolts as per torque chart on page 1. Tighten truss rod nuts and jam nuts when tires are on the ground with all of the baler's weight on them.

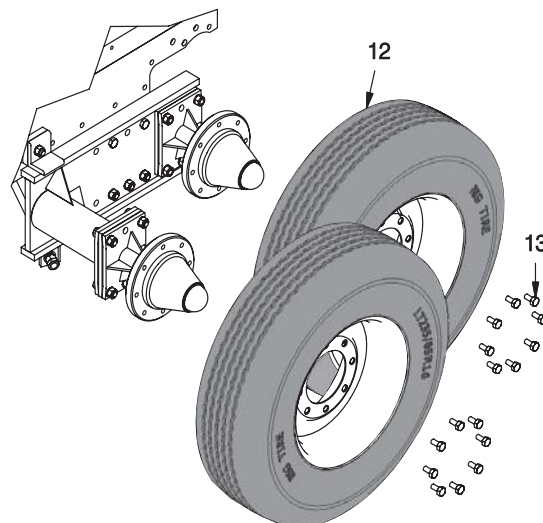
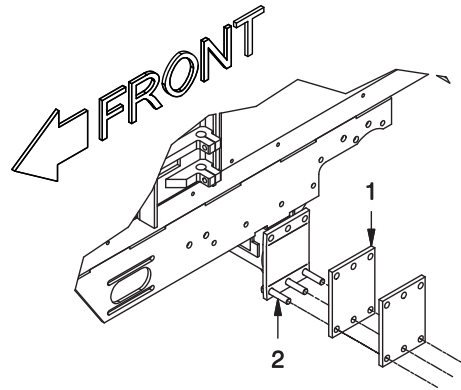


Figure 3 - Mount Tires

## Tire & Wheel 8-Hole Highway LH 2 Tie FOP0000253

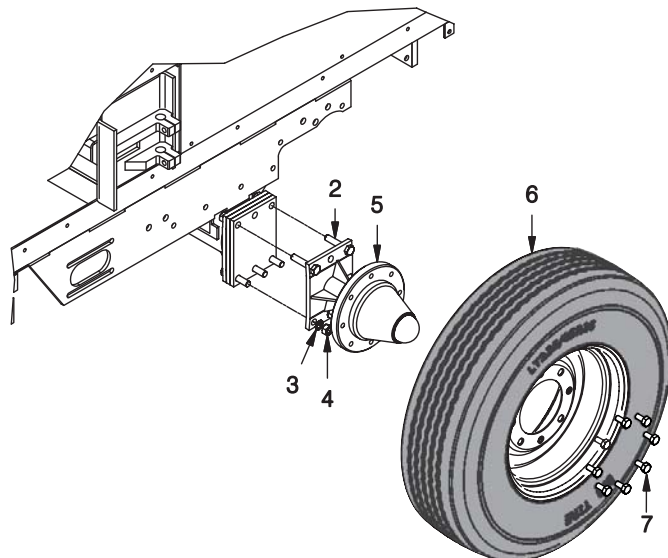
Ref.	Part Number	Description	Quan.
1	F000007636	1/2" Spacer Plate	2
2	R13806355	Hex HD CS NF 5/8 x 3"	5
3	WES0006250	5/8" Star Washer	5
4	217847	5/8" Nut NF	5
5	F000008003	Hub and Spindle 8 Hole	1
6	TIR0000002	Highway Tire & Wheel Assy 1	
	WHL0106897	Wheel F/Highway Tire	
	TIR7501608	Highway Tire	1
7	F000008001	Lug Bolt 9/16 NF	8



**Figure 1 - Mounting Spacers**

A. Place (3) R13806355 Bolts on axle as shown in Figure 1. Place (2) F000007636 spacer plates on axle as shown in Figure 1.

B. Place (2) R13806355 bolts on hub and spindle as shown in Figure 2. Tighten all nuts and bolts so the Hub and Spindle is secure. Mount the tire with the valve stem pointing to the inside of the baler. Torque all nuts and bolts as per torque chart on page 1.



**Figure 2 - Mounting Hub, Spindle and Tire**

## Flotation Tire & Wheel 120" Tracking LH 3 Tie FOP0000257

Ref.	Part Number	Description	Quan.
1	EXT0026922	Axle Extension Assembly	1
2	R13807958	Hex HD CS NF 5/8 x 2-1/2"	2
3	R13806355	Hex HD CS NF 5/8 x 3"	5
4	WES0006250	5/8" Star Washer	10
5	217847	5/8" Nut NF	7
6	230831	CS; 5/8 UNF X 1 1/2	2
7	SPN0287640	Hub and Spindle	1
8	WHL0000002	Tire and Wheel	1
	TIR0165161	Tire	1
	WHL0108191	Wheel	2
9	F000006763	Lug Nut 9/16 NF	8

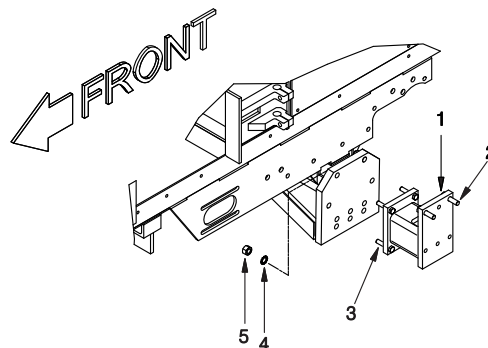


Figure 1 - Mounting Axle Extension

A. Place (5) R13806355 Bolts through Axle Extension and secure to axle using (5) WES0006250 star washers and 217847 nuts as shown in Figure 1. Torque all nuts and bolts as per torque chart on page 1.

B. Place (3) 00271558 Bolts and 3 WES0006250 star washers on the Hub and Spindle and thread the bolts into the axle extension as shown in Figure 1. Place (2) R13807958 Bolts through the extension assembly and spindle as shown in Figure 2. Place the remaining nuts and star washers. Mount the tire with the valve stem pointing to the inside of the baler. Torque all nuts and bolts as per torque chart on page 1.

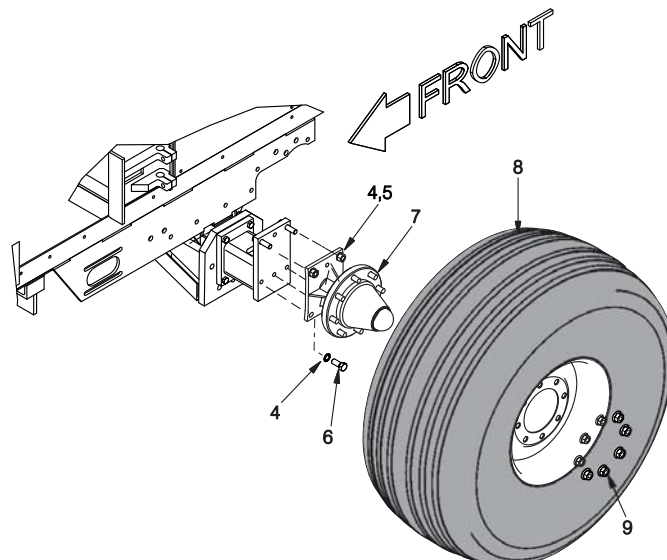


Figure 2 - Mounting Hub, Spindle and Tire

## Tires and Wheels Walking Beam RH FOP0000259

Ref.	Part Number	Description	Quan.
1	F000007636	Spacer	1
2	Y18C-1032	CS; 5/8 UNF X 2 HX HD	4
3	MNT0030914	Wheel Extension	1
4	WES0006250	5/8" Star Washer	10
5	217847	Nut, Hex; 5/8 NF	10
6	F000008003	Hub and Spindle 8 Hole	1
7	R13806335	Hex HD CS NF 5/8 x 3"	1
8	F000007705	RH Brace	10
9	229172	CS; 1/2 NC x 1 3/4"	10
10	239519	Washer, Flat; 1/2"	1
11	223587	Nut, ESNA; 1/2" NC	1
12	R13807958	Hex HD CS NF 5/8 x 2-1/2"	5
13	TIR0000002	Highway Tire & Wheel Assy	2
	WHL0106897	Wheel F/Highway Tire	
	TIR7501608	Highway Tire	1
14	F000008001	Lug Bolts 9/16 NF	16

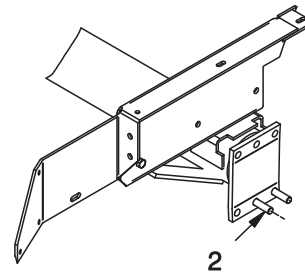


Figure 1 - Mounting Spacer

A. Place (2) Y18C-1032 Bolts through the axle as shown in Figure 1.

B. Place (5) R13807958 Bolts onto the MNT0030914 Wheel Extension as shown in Figure 2. Place (1) F000007636 Spacer Plate and (1) F000008003 Hub on to the wheel extension as shown in Figure 2. Torque all nuts and bolts as per torque chart on page 1.

C. Place (2) Y18C-1032 Bolts through MNT0030914 Wheel Extension as shown in Figure 3. Place the Wheel Extension on to the axle as shown in Figure 3. Place (1) R13806335 bolt through the wheel extension as shown in Figure 3. Place (1) F000007705 RH Brace. Torque all nuts (torque chart on page 1). Mount the tire with the valve stem pointing to the inside of the baler. Torque all nuts and bolts as per torque chart on page 1.

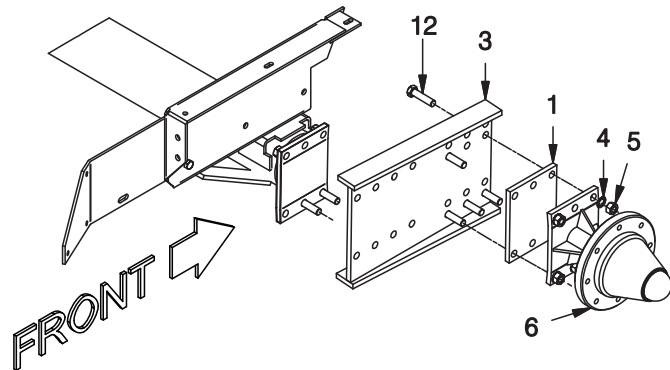


Figure 2 - Mounting Wheel Extension, Spacer and Hub

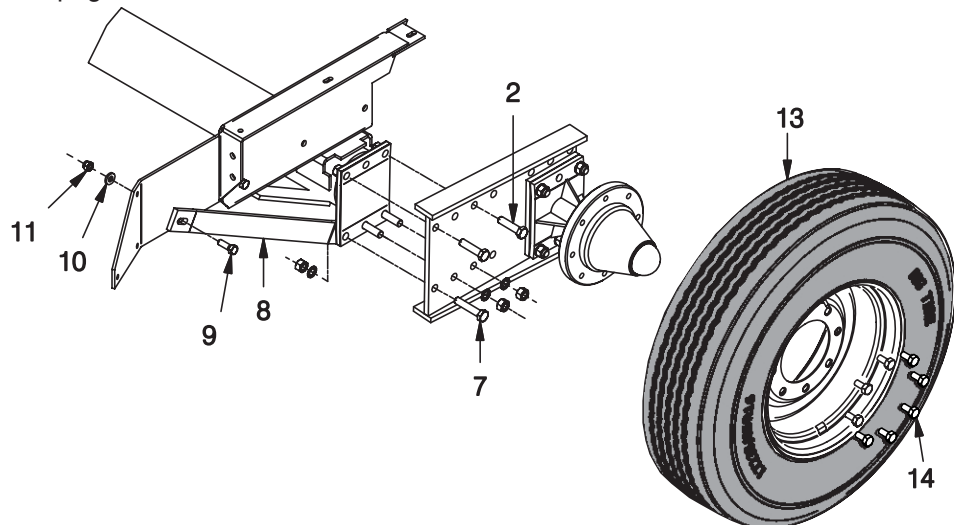


Figure 3 - Mounting Wheel Extension and Tire

## Tires and Wheels Walking Beam RH FOP0000259\*

Ref.	Part Number	Description	Quan.
1*	F000007636	Spacer	2
2	R13807958	Hex HD CS NF 5/8 x 2-1/2"	9
3	MNT0030914	Wheel Extension	1
4	WES0006250	5/8" Star Washer	10
5	217847	Nut, Hex; 5/8 NF	10
6	F000008003	Hub and Spindle 8 Hole	1
7	R13806335	Hex HD CS NF 5/8 x 3"	1
8	F000007705	RH Brace	10
9	229172	CS; 1/2 NC x 1 3/4"	10
10	239519	Washer, Flat; 1/2"	1
11	223587	Nut, ESNA; 1/2" NC	1
12	TIR00000002	Highway Tire & Wheel Assy	2
	WHL0106897	Wheel F/Highway Tire	
	TIR7501608	Highway Tire	1
13	F000008001	Lug Bolts 9/16 NF	16

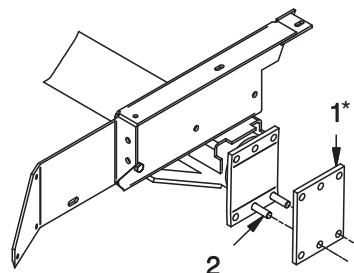


Figure 1 - Mounting Spacer

A. Place (2) R13807958 Bolts through the axle as shown in Figure 1. Place (1) F000007636 Spacer Plate onto the axle where the 2 bolts are as shown in Figure 1.

B. Place (5) R13807958 Bolts onto the MNT0030914 Wheel Extension as shown in Figure 2. Place (1) F000007636 Spacer Plate and (1) F000008003 Hub on to the wheel extension as shown in Figure 2. Torque all nuts and bolts as per torque chart on page 1.

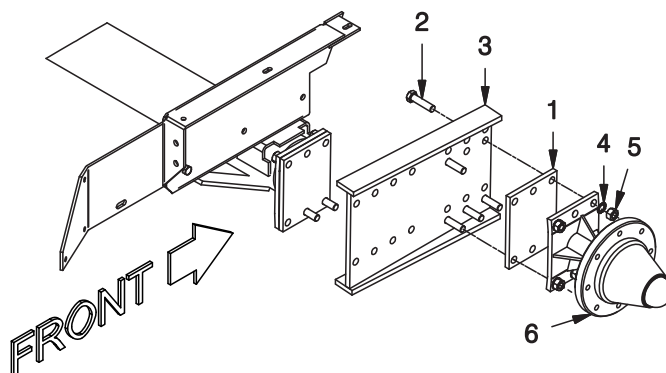


Figure 2 - Mounting Wheel Extension, Spacer and Hub

C. Place (2) R13807958 Bolts through MNT0030914 Wheel Extension as shown in Figure 3. Place the Wheel Extension on to the axle as shown in Figure 3. Place (1) R13806335 bolt through the wheel extension as shown in Figure 3. Place (1) F000007705 RH Brace. Torque all nuts (torque chart on page 1). Mount the tire with the valve stem pointing to the inside of the baler. Torque all nuts and bolts as per torque chart on page 1.

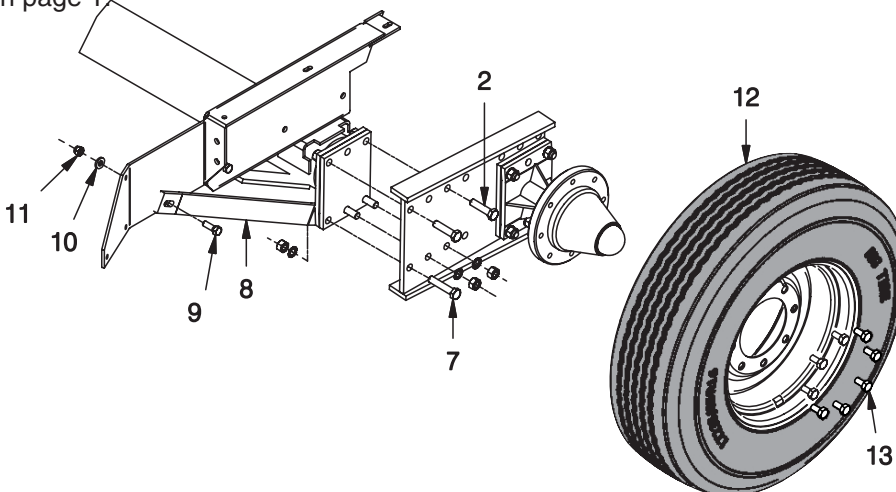


Figure 3 - Mounting Wheel Extension and Tire

\* The use of spacer F000007636 may vary, please have baler serial number available when ordering parts.

## Tires and Wheels Walking Beam LH FOP0000259

Ref.	Part Number	Description	Quan.
1	SPN1024150	Hub/Spindle Walking Beam	1
2	R13806355	CS; 5/8 UNF X 3	7
3	217847	Nut, Hex; 5/8 NF	7
4	WES0006250	5/8" Star Washer	7
5	STD1024150	RH Stud F/Hub1024150	10
6	PLT0029905	PL, Walking Beam	1
7	R13807958	CS; 5/8 UNF X 2 1/2	12
8	SPN0287640	120" Tracking Spindle	2
9	200608	Washer, Lock; 3/4	10
10	222463	GRD 8 Hex Nut NF 3/4	10
11	TIR0000002	Tire and Wheel Highway	2
	WHL0106897	Wheel F/Highway Tire	1
	TIR7501608	Highway Tire	1
12	F000006763	Lug Nut 9/16 NF	10

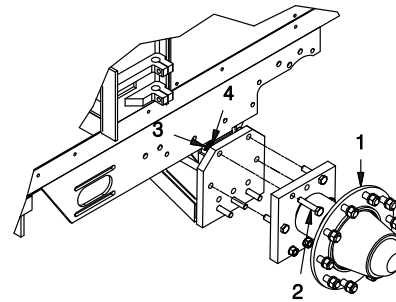


Figure 1 - Mounting Hub to Axle

A. Place (7) R13806355 Bolts through the axle and spindle as shown in Figure 1. Place (1) SPN1024150 Spindle onto the axle as shown in Figure 1. Torque all nuts and bolts as per torque chart on page 1.

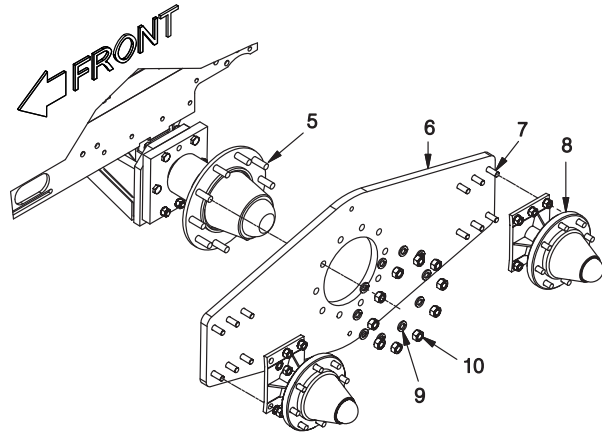


Figure 2 - Mounting Walking Beam Plate

C. Mount the tires with the valve stem pointing to the inside of the baler. Torque all nuts and bolts as per torque chart on page 1.

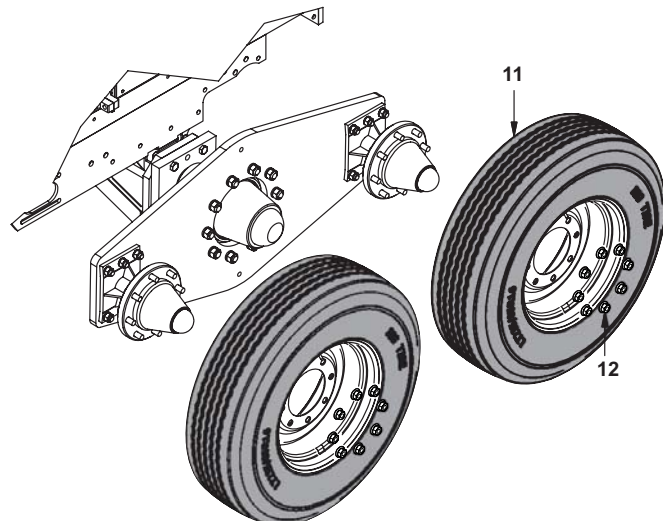


Figure 3 - Mounting Tires



## LH 3 Tie Hydro PTO FOP0000262

Ref.	Part Number	Description	Quan.
1	F000008182	Extension	1
2	SPC0031139	Spacer	1
3	Y18C-1032	CS; 5/8 UNF X 2	12
4	217847	Nut, Hex; 5/8 NF	28
5	WES0006250	5/8" EXT. Star Washer	28
6	R13807958	CS; 5/8 UNF X 2 1/2	10
7	SUP0031138	Channel	1
8	F000007636	Spacer Plate	2
9	901626	Tandem Wheel Plate	1
10	221641W	Hex CS NF 5/8 X 3-1/2	4
11	221637W	CS; 5/8 UNF X 3	2
12	F000008003	Hub/Spindle Assy	2
13	TIR0000002	Tire and Wheel Highway	2
14	F000008001	Lug Bolt 9/16 NF	16

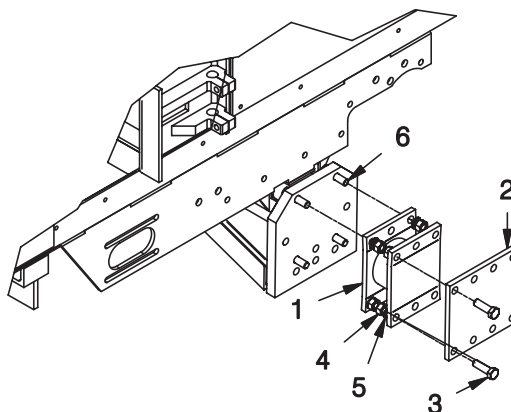


Figure 1 - Mounting Extension and Spacer

A. Place (4) R13807958 bolts through the Axle as shown in Figure 1. Place (1) F000008182 Extension onto the axle where the 4 bolts are as shown in Figure 1. Place (1) SPC0031139 Spacer onto the extension as shown in Figure 1. Torque all nuts and bolts as per torque chart on page 1.

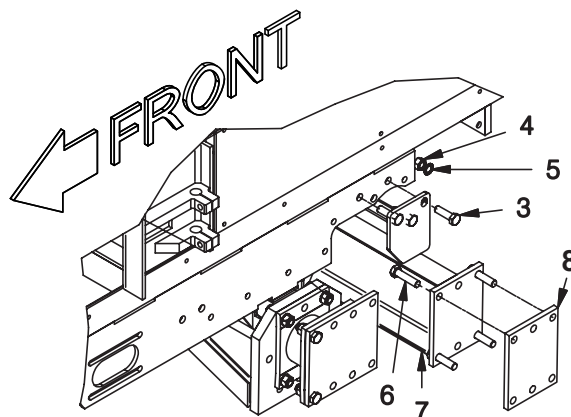
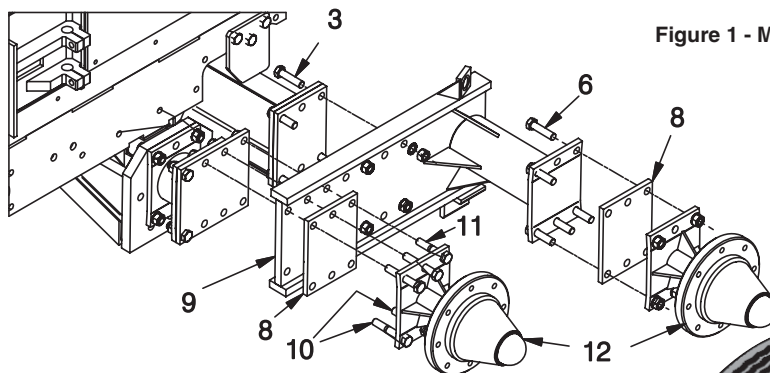


Figure 1 - Mounting Channel and Spacer

B. Place (1) SUP0031138 Channel onto the baler frame as shown in Figure 2. Place (1) F000007636 Spacer Plate on to the channel as shown in Figure 2. Torque all nuts and bolts as per torque chart on page 1.



C. Place (1) 901626 Tandem Wheel Plate as shown in Figure 3. Place (2) F000007636 Spacer Plates and (2) F000008003 Hub/Spindle Assy on to the tandem wheel plate as shown in Figure 3. Torque all nuts (torque chart on page 1). Mount the tires with the valve stem pointing to the inside of the baler. Torque all nuts and bolts as per torque chart on page 1.

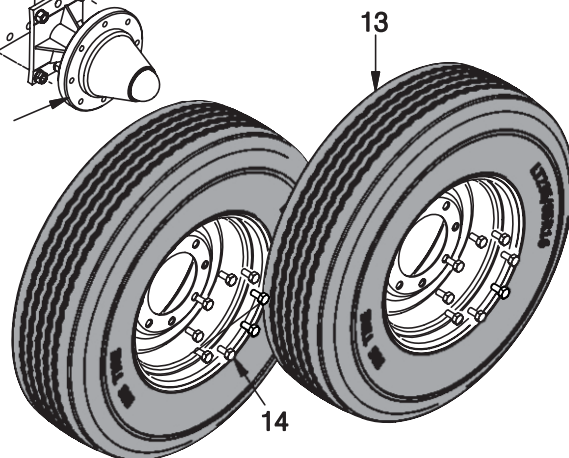


Figure 1 - Mounting Tandem Wheel Plate, Hubs and Tires



To find a dealer in your area,  
Call: 503-625-2560,  
Fax: 503-625-7269, or  
Visit our website: <http://www.alliedsystems.com>

**Allied Systems**  
C O M P A N Y

Printed in USA