

# INSTALLATION INSTRUCTIONS

## Straight Pin, Through Bolt

v4-2

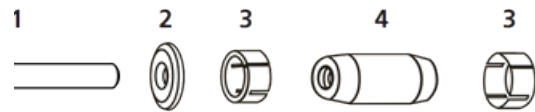
ENGLISH (ENGLISH)



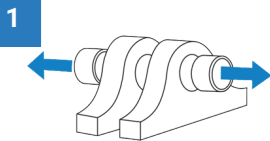
Following these instructions will ensure that the pin is installed correctly and the pivot life is prolonged.

**Congratulations!** You have purchased a custom engineered solution to the pivot wear problem on your machine. Contact your dealer before proceeding if you have any questions.

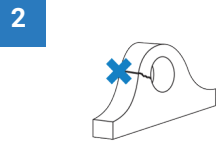
**1 Bolt. 2 Washer. 3 Sleeve. 4 Axle (Pin). 5 flat headed nut for internal hexagon.**



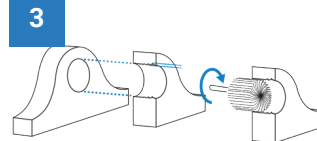
### PREPARATION



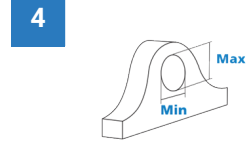
Remove any bushings to eliminate future wear between the bushing and the mounting lug.



Repair any structural damage i.e. cracks or bent lug ears before installation.



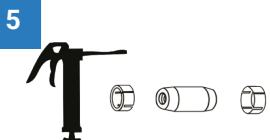
Smooth out irregularities in the bore surfaces.



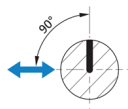
The difference between min and max diameter in the worn lugs must be within .06" (1.5 mm) for the sleeves to fit correctly.

**ATTENTION!** If the worn lugs diameter at any point is 2 mm (.080") or more over original lug diameter contact your dealer. You will need oversized sleeves.

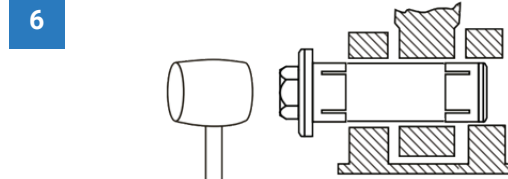
### INSTALLATION



Grease the sleeves and axle with grease available, preferably graphite grease. Do not grease the threads!



**NOTE!** If applicable: position greasing outlet 90 degrees to force direction to minimize stress concentration at outlet.



Install the pin assembled. Position it in the bores and tighten the fastener. Hold the washer with a plier to prevent the axle from turning. Torque as specified.

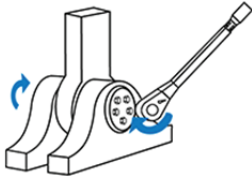
## TORQUE RECOMMENDATIONS

7

### Torque Hex Bolts

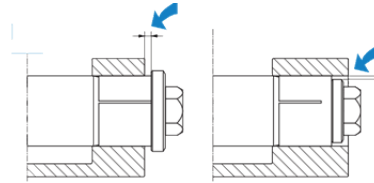
Nm	175
lb-ft	129

8



After initial torque move machine through full range of motion several times and recheck torque. Check the torque after 10 hours, 40 hours and at regular service intervals to ensure proper seating of the sleeves.

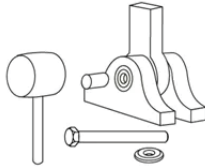
9



Ensure that there is a minimum distance of 0,5 mm (.02") between the washer and the lug. **ATTENTION!** If the washer is in contact with the lug contact your dealer.

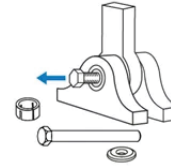
## DISMOUNTING

10



Dismount bolt and washer. Tap the axle until the tension on the sleeves is released (use a piece of pipe between the axle and the mallet/hammer not to damage the threads). Remove the sleeve with a plier.

11



Mount a short bolt and remove the axle using a sliding hammer, puller or similar. Bolt is normally fine pitch and sold by your dealer.