

Forging Clamp Application Worksheet

LR Rep : _____

Date : _____

Dealer Name : _____

End User Name : _____

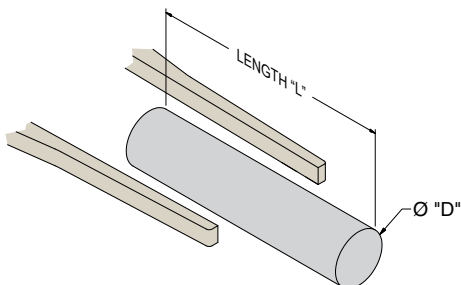
Contact Name : _____

End User Location : _____

Contact Location : _____

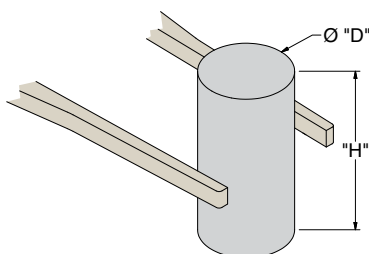
Load Details Recommended opening range is 6-8" larger than the largest object you intend to pick up.

Horizontal Bar



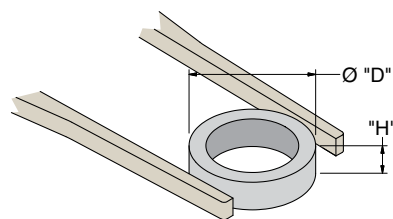
	Min	Max
Diameter, D (in)		
Length, L (in)		
Weight (lbs)		
Temp (°F)		

Vertical Bar



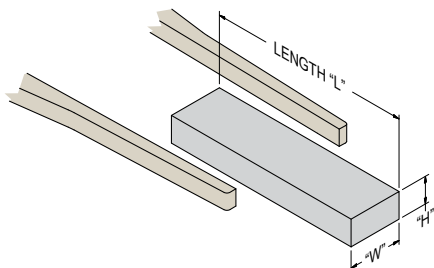
	Min	Max
Diameter, D (in)		
Height, H (in)		
Weight (lbs)		
Temp (°F)		

Rings



	Min	Max
Diameter, D (in)		
Height, H (in)		
Weight (lbs)		
Temp (°F)		

Rectangular (Bar, Slab, Square, Flat Plate, etc)



	Min	Max
Width, W (in)		
Length, L (in)		
Height, H (in)		
Weight (lbs)		
Temp (°F)		

Tooling / Molds / Other

Describe shape of load in detail.

	Min	Max
Width, W (in)		
Length, L (in)		
Height, H (in)		
Weight (lbs)		
Temp (°F)		

Composition of Billot / Ingot

Carbon Steel Titanium
Stainless Steel Copper
Aluminum Nickel

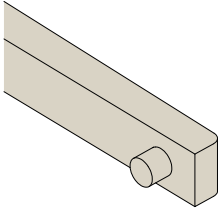
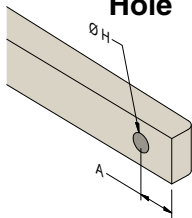
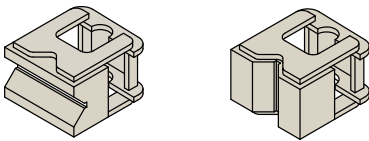
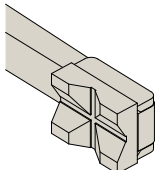
Other : _____

Coating on Billot / Ingot

None
Graphite

Other : _____

Arm Tip Options* Many custom pad options are also available; please consult factory.

Standard Pin 	Hole  <table border="1" data-bbox="375 621 602 701"> <tr> <td>Ø H (in)</td> <td></td> </tr> <tr> <td>A (in)</td> <td></td> </tr> </table>	Ø H (in)		A (in)		Horizontal or Vertical V-Block  <p>Horizontal Vertical</p> <p>Removable, weld-on, individual, or as a set of both.</p>	Combination Horizontal and Vertical V-Block  <p>Weld-on</p>
Ø H (in)							
A (in)							

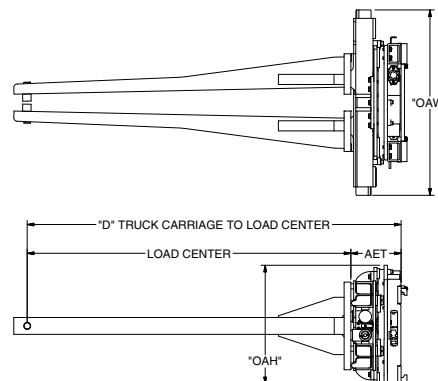
* If you plan to make your own custom tooling for the end of the arms, please consult Long Reach Engineering early in the sales process for limitations and recommendations for attachment to the arms. ASC/Long Reach is not liable for any damage caused to an attachment with unauthorized modifications, and the warranty on modified parts may be adversely affected.

Dimensions

Overall Width Limit, OAW (in) :	
Overall Height Limit, OAH (in) :	
Distance , "D" (in) :	

Is reaching the ground required? Yes No

Truck mast tilt must be considered when trying to reach the ground. The standard mast tilt may not be enough, and an optional tilt configuration may be needed. Longer forging clamp arms can also help to reach the ground at the cost of a reduced capacity. And finally, in some cases it may be possible to build in forward tilt into the mounting of the attachment; please consult factory for details.



Truck Information

Model :	_____	Max Flow :	_____
Capacity :	_____	Max Pressure :	_____
Load Center :	_____	Carriage Type :	_____
Mast Tilt Angle (Forward) :	_____	Carriage Width :	_____
Hydraulic Fluid Type :	HM/HV Mineral oil HFC Water Glycol HFD-U Polyol Ester		

Additional Information

Please specify any unique requirements, loads, conditions, current processes or equipment that will help us with your request.

21433 SW Oregon Street
Sherwood, Oregon 97140-9799 USA
Toll free: (800) 285-7000
Phone: (503) 625-2560
Fax: (503) 625-7269
Email: marketing@alliedsystems.com
www.alliedsystems.com/Longreach