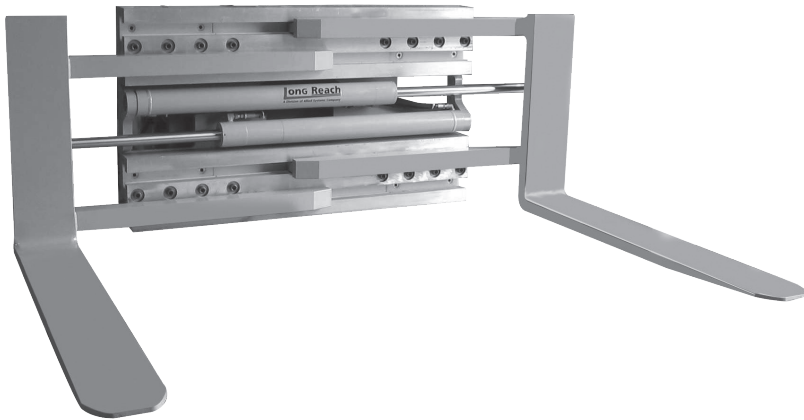


# LCS/NSQ Pallet Fork Clamps

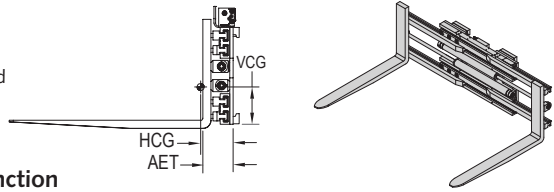


- ◆ Versatile fork positioner with the functionality of a bale clamp
- ◆ Easily pick up a load on a pallet, or clamp or cradle difficult loads, with precise fork positioning for overall handling efficiency.
- ◆ “Repair-N-Place” serviceability means no-lube polymer wear strips can be replaced in just minutes
- ◆ Grease-free handling keeps all loads clean
- ◆ Fast-response hydraulics keep productivity levels high
- ◆ Clamp arms are engineered to suit various applications

**See page E-10**

# LCS/NSQ Pallet Fork Clamps

- Weld-on forks for maximum strength
- Clean, grease-free handling — no lubrication required
- High net truck capacity



## Non-Sideshifting Pallet Fork Clamps, 1 Function

Model Number	Capacity lb @ 24"	Opening Range (in) <sup>1</sup>	Fork Size T x W x L (in)	Mounting Class	Lost Load AET (in)	HCG (in)	VCG (in)	Weight (lb)
LCS-25NN-FB536	2,500	14–60.8	1.5 x 5 x 36	II/III	7.0	6.1	8.0	745
LCS-25NN-FB542			1.5 x 5 x 42			7.2	7.7	770
LCS-25NN-FB548			1.5 x 5 x 48			8.0	7.5	785
LCS-35NN-FD536	3,500	14–65.8	2 x 5 x 36	II/III	7.5	6.3	7.9	845
LCS-35NN-FD542			2 x 5 x 42			7.4	7.5	880
LCS-35NN-FD548			2 x 5 x 48			7.1	8.7	915
LCS-50NN-FD536	5,000	17–71.4	2 x 5 x 36	II	7.5	6.2	8.1	870
LCS-50NN-FD542			III	8.5	7.0	8.3	900	
LCS-50NN-FD548			II	7.5	7.3	7.7	900	
LCS-50NN-FD548	5,000	17–71.4	2 x 5 x 48	III	8.5	8.0	7.9	930
LCS-50NN-FD548			II	7.5	8.6	7.3	940	
LCS-50NN-FD548			III	8.5	8.3	7.7	970	
LCS-50NN-FD554	5,000	17–78.4	2 x 5 x 54	II	7.5	9.9	7.0	975
LCS-50NN-FD554			III	8.5	9.6	7.2	1,005	
LCS-50NN-FD554			II	7.5	7.1	7.7	950	
LCS-5CANN-FD542	5,000	17–78.4	2 x 5 x 42	III	8.5	7.8	8.2	980
LCS-5CANN-FD548			II	7.5	8.3	7.3	985	
LCS-5CANN-FD548			III	8.5	9.0	7.8	1015	
LCS-5CANN-FD554	5,000	15–88.4	2 x 5 x 54	II	7.5	9.6	7.0	1,020
LCS-5CANN-FD554			III	8.5	10.3	7.5	1,050	
LCS-5DANN-FD542			II	8.0	5.7	8.5	1,385	
LCS-5DANN-FD542	5,000	15–88.4	2 x 5 x 42	III	9.0	6.5	8.7	1,415
LCS-5DANN-FD548			II	8.0	6.6	8.2	1,420	
LCS-5DANN-FD548			III	9.0	7.4	8.5	1,450	
LCS-5DANN-FD554	5,000	15–88.4	2 x 5 x 54	II	8.0	7.5	7.9	1,455
LCS-5DANN-FD554			III	9.0	8.3	8.2	1,485	

<sup>1</sup> Opening range is to inside of forks.

### Installation Kits

Model Number	Number of Functions
YHJL-6-S-30	1
YHJL-8-S-30	
YHJL-6-D-30	2
YHJL-8-D-30	

Includes the hoses to connect a standard attachment to the hose terminal on the lift truck carriage.

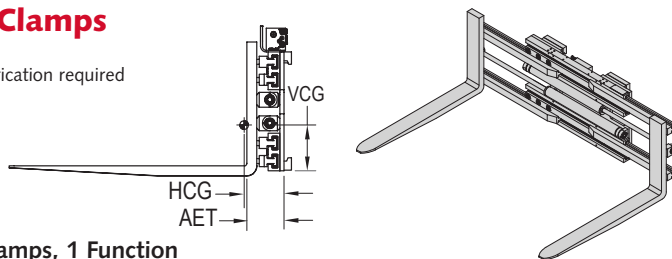
### Optional Mounting Hooks

Model Number	Description
Class II	Quick change hooks
Class III	Quick change hooks
Class IV	Quick change hooks
Pin/Shaft Mounting	

For mounting other than shown, consult factory.

## LCS/NSQ Pallet Fork Clamps

- Weld-on forks for maximum strength
- Clean, grease-free handling — no lubrication required
- High net truck capacity



### Non-Sideshifting Pallet Fork Clamps, 1 Function

Model Number	Capacity lb @ 24"	Opening Range (in) <sup>1</sup>	Fork Size T x W x L (in)	Mounting Class	Lost Load AET (in)	HCG (in)	VCG (in)	Weight (lb)
LCS-70NN-FD642	7,000	22.0–86	2 x 6 x 42	III	9.9	6.7	10.1	1,690
IV				6.6		9.0	1,715	
LCS-70NN-FD648			2 x 6 x 48	III		7.8	10.2	1,745
IV				7.6		8.6	1,770	
LCS-70NN-FD654	2 x 6 x 54	III	8.8	9.9	1,790			
IV		8.6	8.3	1,815				
LCS-70NN-FD660	2 x 6 x 60	III	9.7	9.7	1,820			
IV		9.5	8.1	1,850				
LCS-7CNN-FD642	7,000	15.5–77.4	2 x 6 x 42	III	9.9	6.7	10.1	1,690
IV				6.6		9.0	1,715	
LCS-7CNN-FD648			2 x 6 x 48	III		7.8	10.2	1,745
IV				7.6		8.6	1,770	
LCS-7CNN-FD654	2 x 6 x 54	III	8.8	9.9	1,790			
IV		8.6	8.3	1,815				
LCS-7CNN-FD660	2 x 6 x 60	III	9.7	9.7	1,820			
IV		9.5	8.1	1,850				
LCS-85NN-FD742	8,500	20–84	2 x 7 x 42	III	9.9	7.0	10.5	1,785
IV				6.9		8.7	1,810	
LCS-85NN-FD748			2 x 7 x 48	III		8.2	10.0	1,855
IV				8.1		8.3	1,875	
LCS-85NN-FD754	2 x 7 x 54	III	9.2	9.7	1,915			
IV		9.1	8.1	1,940				
LCS-85NN-FD760	2 x 7 x 60	III	10.1	9.5	1,950			
IV		10.0	8.0	1,975				
NSQ-11NN-FF748	11,000	20–86	2.5 x 7 x 48	IV	10.9	8.5	9.4	2,749
NSQ-14NN-FF848	14,000	18–88	2.5 x 8 x 48	IV	13.6	9.0	9.3	2,867

<sup>1</sup> Opening range is to inside of forks.

### ! Minimum Truck Carriage Width

Model Number	Body Width (in)	Minimum Truck Carriage Width (in)
LCS-25/35	36/41	30/35
LCS-50/5C/5D	41/48/62	35/42/39
LCS-70/85 ITA III	50	36
LCS-70/85 ITA IV	50	39.5
NSQ-11/14	52/56	39/36

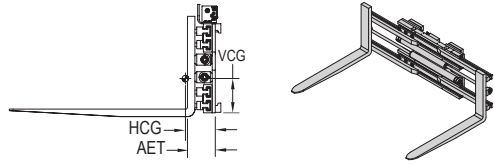
### ! Recommended Hydraulic Supply

Model Number	Flow (gpm)	Max psi
LCS-25 thru LCS-85	7–10	2,500
NSQ-11 thru NSQ-14	9–15	2,250

Hydraulic flow less than minimum may reduce operating speed and/or cause irregular arm movement. Higher flow may result in heat build-up, erratic operation and shortened hydraulic system life.

# LCS/NSQ Pallet Fork Clamps

- Weld-on forks for maximum strength
- Clean, grease-free handling — no lubrication required
- High net truck capacity



## Sideshifting Pallet Fork Clamps, 2 Functions

Model Number	Capacity lb @ 24"	Opening Range (in) <sup>1</sup>	Fork Size T x W x L (in)	Mounting Class	Lost Load AET (in)	HCG (in)	VCG (in)	Weight (lb)
LCS-25NS-FB536	2,500	14.0–60.8	1.5 x 5 x 36	II/III	7.0	6.0	8.5	785
LCS-25NS-FB542			1.5 x 5 x 42			7.0	8.2	810
LCS-25NS-FB548			1.5 x 5 x 48			8.2	7.8	840
LCS-35NS-FD536	3,500	14.0–65.8	2 x 5 x 36	II/III	7.5	6.2	8.6	875
LCS-35NS-FD542			2 x 5 x 42			7.3	8.2	910
LCS-35NS-FD548			2 x 5 x 48			8.6	7.8	950
LCS-50NS-FD536	5,000	17.0–71.4	2 x 5 x 36	II or III	7.5	6.1	8.9	905
LCS-50NS-FD542			2 x 5 x 42			7.1	8.5	940
LCS-50NS-FD548			2 x 5 x 48			8.3	8.1	980
LCS-50NS-FD554			2 x 5 x 54			9.6	7.8	1,015
LCS-5CNS-FD542	5,000	17.0–78.5	2 x 5 x 42	II or III	7.5	7.0	8.2	980
LCS-5CNS-FD548			2 x 5 x 48			8.2	7.8	1,015
LCS-5CNS-FD554			2 x 5 x 54			9.4	7.5	1,050
LCS-5DNS-FD542	5,000	15.0–88.5	2 x 5 x 42	II or III	8.0	5.5	9.2	1,420
LCS-5DNS-FD548			2 x 5 x 48			6.5	8.9	1,460
LCS-5DNS-FD554			2 x 5 x 54			7.4	8.6	1,495
LCS-70NS-FD642	7,000	22.0–86	2 x 6 x 42	III	9.8	6.5	11.2	1,745
				IV		6.5	11.2	1,745
LCS-70NS-FD648			2 x 6 x 48	III		7.6	10.8	1,800
				IV		7.6	10.8	1,800
LCS-70NS-FD654			2 x 6 x 54	III		8.6	10.5	1,840
				IV		8.6	10.5	1,840
LCS-70NS-FD660	2 x 6 x 60	III	9.5	10.3	1,875			
		IV	9.5	10.3	1,875			
LCS-7CNS-FD642	7,000	15.5–77.4	2 x 6 x 42	III	9.8	6.5	11.2	1,745
				IV		6.5	11.2	1,745
LCS-7CNS-FD648			2 x 6 x 48	III		7.6	10.8	1,800
				IV		7.6	10.8	1,800
LCS-7CNS-FD654			2 x 6 x 54	III		8.6	10.5	1,840
				IV		8.6	10.5	1,840
LCS-7CNS-FD660	2 x 6 x 60	III	9.5	10.3	1,875			
		IV	9.5	10.3	1,875			
LCS-85NS-FD742	8,500	20–84	2 x 7 x 42	III	9.8	6.9	11.0	1,840
				IV		6.9	11.0	1,840
LCS-85NS-FD748			2 x 7 x 48	III		8.1	10.6	1,910
				IV		8.1	10.6	1,910
LCS-85NS-FD754			2 x 7 x 54	III		9.1	10.2	1,970
				IV		9.1	10.2	1,970
LCS-85NS-FD760	2 x 7 x 60	III	10.0	10.0	2,005			
		IV	10.0	10.0	2,005			
NSQ-11NS-FF748	11,000	20–86	2.5 x 7 x 48	IV	10.9	8.5	9.1	2,749
NSQ-14NS-FF848	14,000	18–88	2.5 x 8 x 48	IV	13.6	9.0	9.3	2,867

<sup>1</sup> Opening range is to inside of forks.

Note: See page E-11 for recommended hydraulic supply and minimum truck carriage width.