



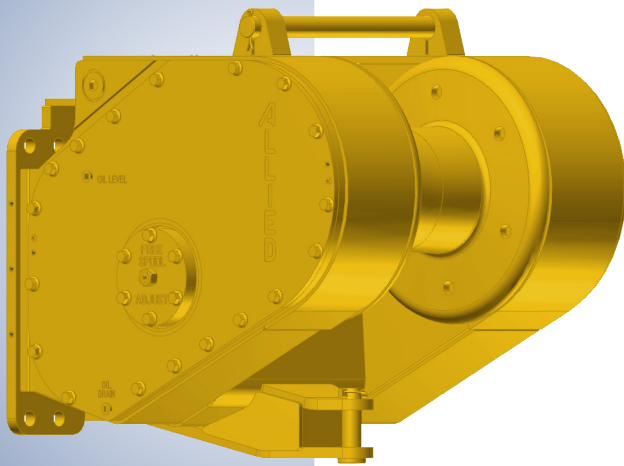
# Parts Manual

## Allied H5C

## Hydraulic Winch

for John Deere Dozers

Please check the Allied Systems website  
regularly for updates to this manual.  
[www.alliedsystems.com](http://www.alliedsystems.com)



# Customer Edition



## **Safety Precautions**

**Read, understand and observe the Safety Summary on pages 1 through 3 to prevent injury to personnel and damage to equipment.**

**Winch serial number** \_\_\_\_\_

**Date put into service** \_\_\_\_\_

**NOTE: This publication may be translated to different languages for sole purpose of easy reference in non-English speaking locations.**

**Should there be differences in interpretations to the text, please refer to the English language edition published by Allied Systems Company as the controlling document.**

## Index

### H5C Winch Parts for John Deere Dozers

Safety Summary . . . . .	1
Unit Identification . . . . .	4
Using this Manual . . . . .	5
Oil Specifications . . . . .	6
Ordering Parts . . . . .	7
Nameplate & Decals . . . . .	8
Section 1 Frame/Covers/Mounting Parts . . . . .	9
Section 2 Gear/Shaft Train . . . . .	17
Section 3 Hydraulics/Electrical/Controls . . . . .	25
Section 4 Optional Equipment . . . . .	45
Section 5 Recommended Service Parts, Intervals & Kits. . . . .	49
Numerical Index . . . . .	56

## Safety Summary

### General Safety Notices

The following pages contain general safety warnings which supplement specific warnings and cautions appearing elsewhere in this manual. All electrical and hydraulic equipment is dangerous. You must thoroughly review and understand the Safety Summary before attempting to operate, troubleshoot or service this winch.

The following symbols and terms are used to emphasize safety precautions and notices in this manual:

### DANGER

The “DANGER” symbol indicates a hazardous situation which, if not avoided, will result in serious injury or death. Carefully read the message that follows to prevent serious injury or death.

### WARNING

The “WARNING” symbol appears wherever incorrect operating procedures or practices could cause serious injury or death. Carefully read the message that follows to prevent serious injury or death.

### CAUTION

The “CAUTION” symbol appears where a hazardous situation which, if not avoided, could result in minor to moderate injury and equipment damage.

### NOTICE

This signal word alerts to a situation that is not related to personal injury but may cause equipment damage.

NOTE: ...

The term “NOTE” highlights operating procedures or practices that may improve equipment reliability and/or personnel performance.

### Safety Regulations

Each country has its own safety legislation. It is in the operator’s own interest to be conversant with these regulations and to comply with them in full. This also applies to local bylaws and regulations in force on a particular worksite.

Should the recommendations in this manual deviate from those in the user’ country, the national regulations should be followed.

### Operation, Inspection, and Maintenance Warnings

### WARNING

Multiple hazards.

Ignoring safety warnings may cause equipment damage, personal injury or death.

All possible safety hazards cannot be foreseen and included in this manual. The operator must always be alert to possible hazards that could endanger personnel or damage the equipment.

### Training

- Do not operate the winch unless your are authorized and trained to do so.
- Read, understand, and follow the operating, inspection, and maintenance instructions in this manual.
- Keep yourself informed of any applicable codes, regulations and standards for the job.

### Personnel Safety

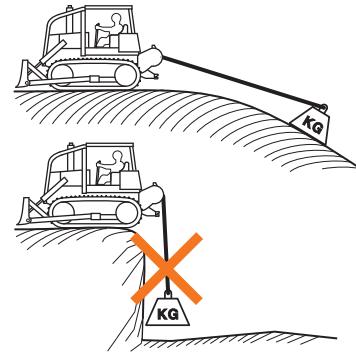
- Stay in the operator’s seat when operating the winch.
- Do not stand on the vehicle when operating the winch.
- Avoid winch operation near people or other machines.
- Never stand nor permit others to stand in the bight (loop) of a wire rope.

- Do not stand nor permit others to be near the winch or wire rope when there is tension on the wire rope.



- Make sure ground personnel are in plain view of the operator, and at a distance of at least 1½ times the working length of the wire rope.
- Observe jobsite rules.
- Do not use the control levers for hand holds when entering or leaving the vehicle.
- Be in complete control at all times.
- Do not use the control levers as hangers for clothes, water bags, grease guns, lunch pails, etc.
- Do not leave the vehicle when the winch wire rope is under tension.
- Do not permit riders on the vehicle or load.
- Operation Warnings
- Do not operate the winch unless the vehicle is equipped with a screen to protect the operator if the wire rope breaks.
- Be aware of the ground conditions, and make sure the ground and tractor are stable enough to pull the intended load.
- Do not attempt to pull loads in excess of the rated capacity of the winch.
- Make sure that any hand signals used by ground personnel are clearly defined and understood by everyone involved.
- Do not attempt to “jerk” or “shock” a load free. Doing so can cause loads in excess of the rated capacity of the wire rope, winch, or mounting hardware.

- Your winch may have temperature shut-off system for protection of tractor and winch. Manual override of high temperature shut-off will cause damage to tractor and winch.
- This winch is neither intended, designed, nor rated for any application involved in the lifting or moving of personnel.
- Do not use the winch as an anchor for a double or two-part line.
- Do not pull the hook through the throat or over the drum, which will cause damage.
- When the winch is not in use, make sure the control lever is in **BRAKE-ON** position and the winch brake is applied.
- Do not use winch as a hoist. Tractor and skidder mounted winches are designed for towing.



### Wire Rope Safety

- Always inspect wire rope, tail chain and other rigging components for wear, damage, broken strands or abuse before use.
- Never use wire rope, tail chain or other rigging that is worn-out, damaged or abused.
- Never overload wire rope, tail chain or rigging.
- Wire rope and tail chain will fail if worn-out, overloaded, misused, damaged, improperly maintained or abused.



## WARNING

**Wire rope or tail chain failure may cause serious injury or death.**

**Inspect rigging before use and obey all safety warnings.**

- Do not terminate wire rope to tail chain by the use of a knot.
- Do not handle wire rope if the hook end is not free. A load could break away, suddenly tensioning the wire rope, resulting in serious injury or death.
- Stay clear of wire rope entry areas (fairlead or arch rollers, winch drum etc).
- Maintain a **minimum of three (3) complete wraps of wire rope** on the drum for normal operation. It may help to paint the last five wraps of wire rope a contrasting color, to serve as a visual indicator.
- Do not handle wire rope with bare hands. Wear leather gloves at all times.
- Align the tractor with the load to prevent side loading the winch, and to maintain even spooling of the wire rope.
- If applying tension to the wire rope manually during spooling:
  - ... ensure that the operator is winching in slowly,
  - ... keep your hands and clothing well clear of any rollers or the winch drum,
  - ... do not maintain tension by letting the wire rope to slip through your hands,
  - ... use a hand-over-hand technique to maintain tension.
- The hydraulic system must be kept clean and free of contamination at all times.
- Do not weld on any part of the winch. Contact Allied Systems if weld repairs are needed.

### Hydraulic Hazards

- Wear personal protective equipment, such as gloves and safety glasses, whenever servicing or checking a hydraulic system.
- Assume that all hydraulic hoses and components are pressurized. Relieve all hydraulic pressure before disconnecting any hydraulic line.
- Never try to stop or check for a hydraulic leak with any part of your body; use a piece of cardboard to check for hydraulic leaks.
- Small hydraulic hose leaks are extremely dangerous, and can inject hydraulic oil under the skin, even through gloves.

 **DANGER**

**Injection hazard.**

**Infection and gangrene will result when hydraulic oil penetrates the skin. See a doctor immediately to prevent loss of limb or death.**

**Use a piece of cardboard to check for hydraulic leaks.**

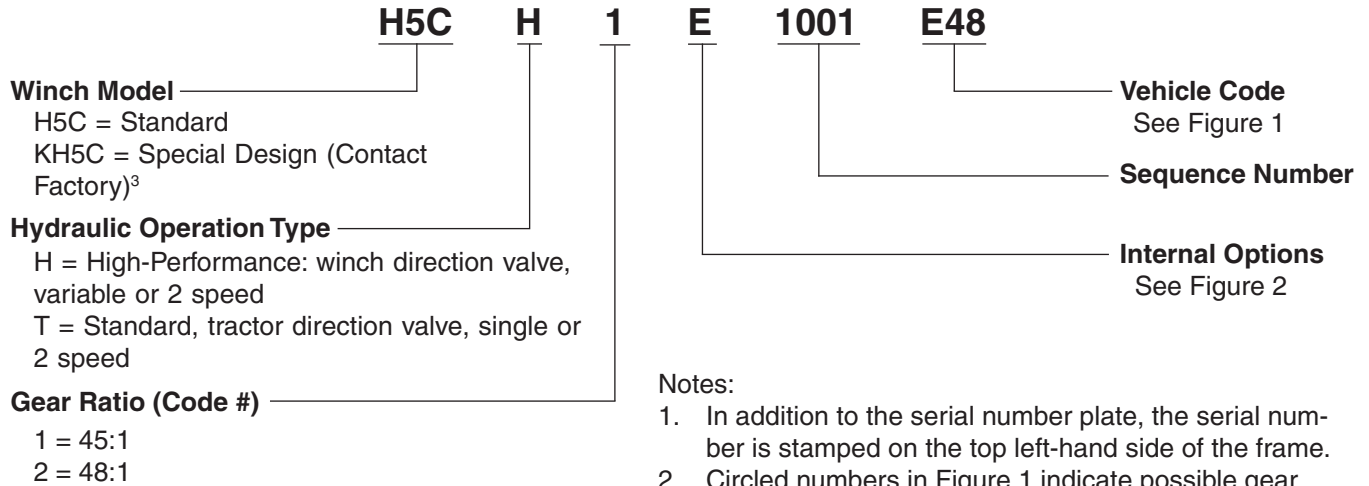
### Maintenance Warnings

- Do not permit other people near the control area when you inspect or repair a machine.
- Never inspect, repair, or perform maintenance on a machine that is in motion.
- Inspect the winch before each use:
  - ... Make sure that the controls and instruments operate correctly.
  - ... Report the need for repairs immediately.
  - ... Do not work with a damaged or worn wire rope.
  - ... Do not use a winch that needs repairs.
  - ... If the wire rope and ferrule must be removed from the drum, make sure the end of the wire rope and ferrule are controlled when the ferrule is released. The end of the wire rope can suddenly move from the drum like a compressed spring when the ferrule is released, and cause an injury.
- Replace any parts only with genuine Allied Winch parts.
- Use only the lubricants listed in the Recommended Oil List. See page 6.



## Unit Identification

Allied Winch Serial Number Nameplate Data For Tractor Mountings



**Notes:**

1. In addition to the serial number plate, the serial number is stamped on the top left-hand side of the frame.
2. Circled numbers in Figure 1 indicate possible gear ratios.
3. If your serial number begins with the letter "K", contact the factory for parts and service information.
4. If your serial number ends with the letter "M", contact the factory for parts and service information.

C O D E	<b>E</b> John Deere
<b>48</b>	750J ①
<b>391</b>	700K ①

**Figure 1, Tractor or Skidder Identification Codes and Available Gear Ratios**

Circled numbers in Figure 1 indicate possible gear ratios.

	D	E	U
<b>FREESPOOL</b>	X	X	X
<b>EXTERNAL PUMP</b>	X	X	X
<b>PFR</b>	X	X	X
<b>OVERWIND</b>	X	X	
<b>UNDERWIND</b>			X
<b>SINGLE SPEED</b>		X	X
<b>2 SPEED</b>	X		
<b>BRAKE-OFF (HI-P)</b>		X	X

**Figure 2, Internal Options**



## Using this Manual

### When the part number and the next higher assembly is not known:

1. Determine the function and application of the part required. Turn to the illustrated index page immediately behind the front cover, and select the most appropriate area.
2. Use the table of contents at the beginning of each chapter to determine the assembly which would normally contain the part required. Proceed then to locate the part on the assembly breakdown page.

### When the part number is not known and the next higher assembly is known:

1. Determine the assembly the required part is used on. Turn to the master index (which immediately follows the illustrated index).
2. Locate the assembly on which the required part is used, and turn to the page indicated for that assembly. Proceed to locate the part on the assembly breakdown page.

### When the part number is known:

Use the numerical index to find the part number. Turn to the page listed and locate the part as indicated by the reference number.

### General:

The assembly breakdowns include part numbers, descriptions, quantities required, keys and footnotes to help in selecting the correct parts.

Keys are used to show effective serial numbers for two or more similar assemblies, LH and RH assembly parts, etc. Select the appropriate key, "A," "B," "C," or "D" and the corresponding quantity column to find the required parts.

Indent dots are used to indicate assemblies and sub-parts of assemblies. No dot indicates the major assembly. Part descriptions which are indented with dots are sub-parts of the major assembly shown above.

Quantities shown are for one assembly. Note that when two assemblies are shown, but the quantity of the sub-parts is indicated as three, this means three per assembly, for a total of six. AR means As Required, and NSS indicates Not Sold Separately.

Serial numbers are shown to allow for the most current parts information to be incorporated into the parts manual. See page 4 for serial number information.

### Abbreviations

Abbreviations are used both on the winch and in this manual. For example, a manifold may have a port stamped "FS". That port is related to the "freespool" circuit. This abbreviation is also used on pages in this manual that reference this port, or the ports connected to this port. Figure 3 lists the most common abbreviations used in this manual.

Abbreviation	Full Name
P	Pressure
T	Tank
BO	Brake Off
FA	Filter Outlet
FE	Filter Inlet
FS	Freespool
HS	High Speed
LS	Load Sense
PD	Pilot Drain
PP	Pilot Pressure
PS	Pilot Supply
RI	Reel In
RO	Reel Out
TP	Test Port
TS	Temperature Switch

Figure 3, Abbreviations

---

## Oil Specifications

### Oil Selection

For winches using tractor-supplied hydraulics for winch operation, use the dozer manufacturer's specified fluids. For gear oil, use the oils specified listed here. The winch gear housing factory fill is Mobil 424, which has an ISO Viscosity Grade 46 to 68.

The hydraulic circuit and winch gear housing have different fluids.

**Note: Some hydraulic system oils are not recommended for use inside the winch case.**

	Hydraulic System (Pump)	Winch Case (Gear Train)
<b>Chevron</b>	Use Tractor Fluid	Drive Train Fluids HD
<b>Exxon-Mobil</b>	Use Tractor Fluid	Mobil Trans HD Series

Figure 4, Recommended Oil List

### Oil Capacity

The oil capacity for H5C winch case (gear train) is 17 quarts (16 liters).

## Ordering Parts

When ordering replacement parts, give the unit serial number, part number, name of part and quantity required.

For any further information on parts, service or ordering, consult your local winch dealer, or contact Allied Systems Company:

**Allied Systems Company**  
21433 SW Oregon Street  
Sherwood, OR 97140 U.S.A.

Phone: 503-625-2560

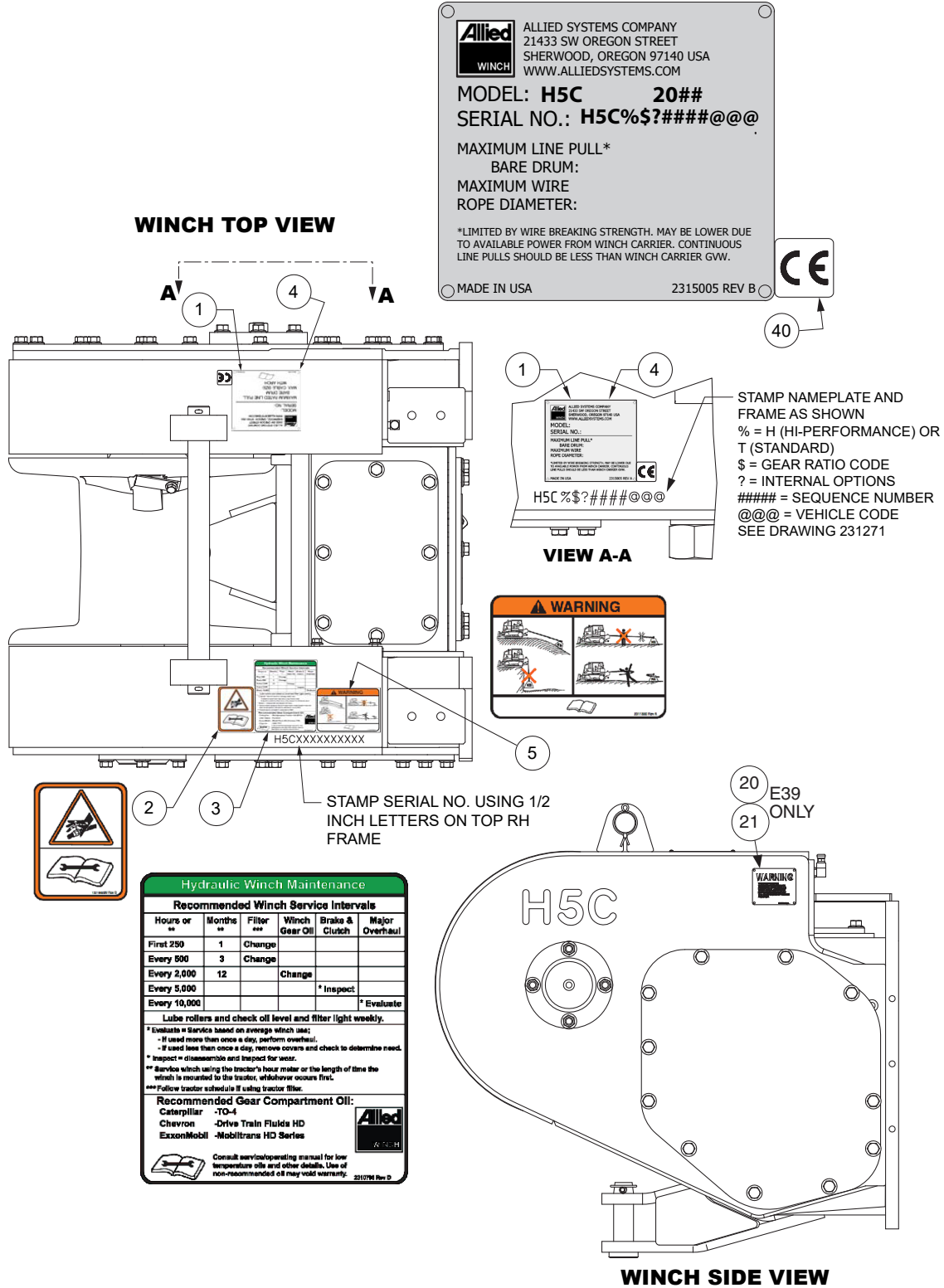
Fax: 503-625-5132

E-mail: [parts@alliedsystems.com](mailto:parts@alliedsystems.com)

Also see our website, [www.alliedsystems.com](http://www.alliedsystems.com), where the most current copy of this manual is always available.

**NOTE: This publication may be translated to different languages for sole purpose of easy reference in non-English speaking locations. Should there be differences in interpretations to the text, please refer to the English language edition published by Allied Systems Company as the controlling document.**

# Nameplate & Decals



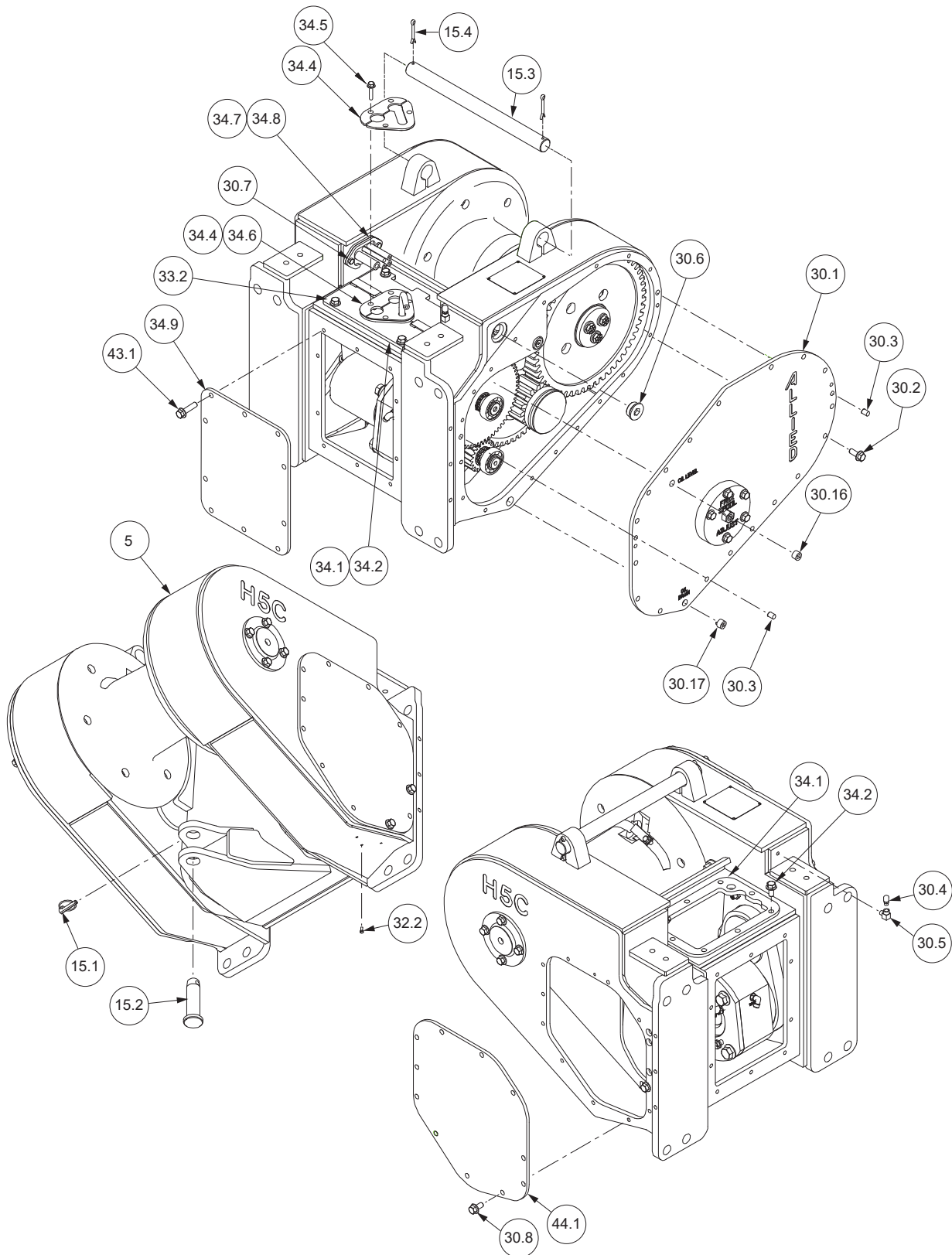
Item	Part No.	Qty	Description	Item	Part No.	Qty	Description
1	*	-----	1 Nameplate	5	2311330	1	Decal, Load & Wire Rope
2	1321665W	2	Decal, Warning	40	2311557	AR	Label, CE Mark
3	2311329	1	Decal, Maintenance				
4	16602W	4	Screw	*			Contact Factory

**Section 1**  
**Frames/Covers/Mounting Parts**

# Frame and Covers

John Deere 750J (H5CH1E\*\*E48)

Page 1 of 2



## Frame and Covers

John Deere 750J (H5CH1E\*\*E48)

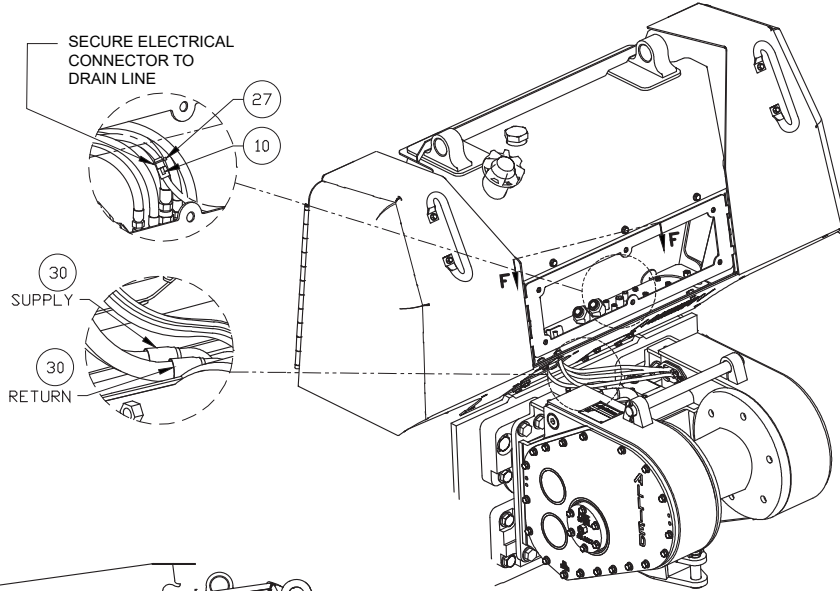
Page 2 of 2

Item	Part No.	Qty	Description	Item	Part No.	Qty	Description
5	2306189W	1	Frame	30.16	15315W	1	Fitting
15.1	2303221W	1	Pin, Retaining	30.17	15290W	1	Fitting
15.2	1314656W	1	Pin, Drawbar	34.1	2307261W	1	Plate, Cover, Top
15.3	93927W	1	Rod, Tie	34.2	2307257W	1	Plate, Top
15.4	15256W	2	Cotter Pin	34.3	2307111W	1	Cover Plate
30.1	2306570W	1	Cover, LH	34.4	2307112W	1	Cover Plate
30.2	2303848W	18	Screw, Flange	34.5	398567W	4	Screw, Flange
30.3	176208W	2	Pin	34.6	2307113W	1	Gasket, Hose Cover
30.4	2304101W	1	Breather	34.7	2307225W	1	Gasket, Hose Seal
30.5	16151W	1	Fitting	34.8	2307226W	1	Cover
30.6	188210W	1	Fitting	34.9	2306994W	1	Cover, Front
30.7	398567W	2	Screw, Flange	43.1	398817W	10	Screw, Flange
30.8	398817W	15	Screw, Flange	44.1	2307097W	1	Cover, RH
30.9	264159W	1	Adhesive				
30.12	16243W	1	Screw				

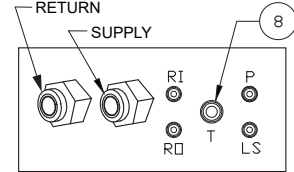
# Mounting Parts

John Deere 750J (H5CH1E\*\*E48)

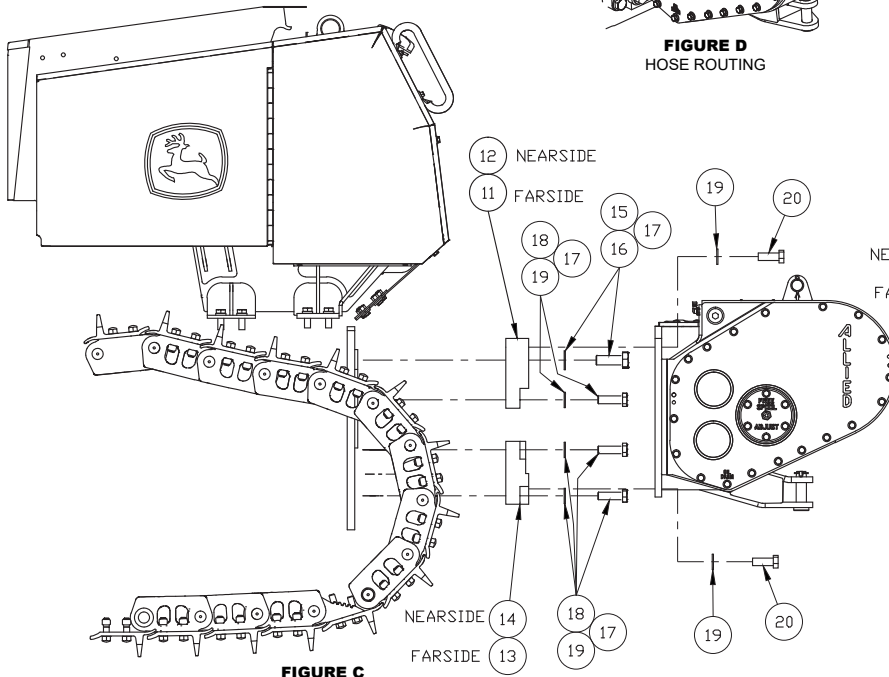
Page 1 of 2



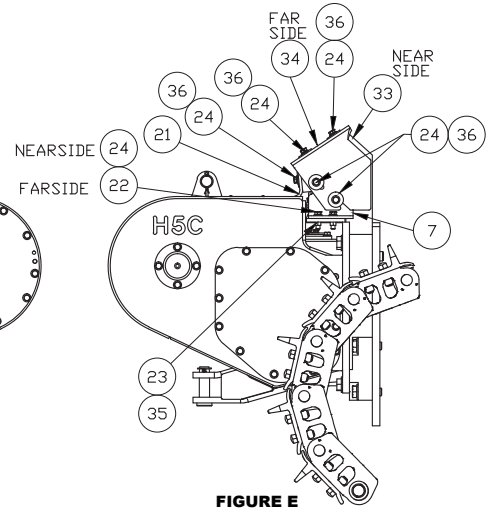
**FIGURE D**  
HOSE ROUTING



**DETAIL F**  
TRACTOR HYDRAULIC CONNECTIONS  
(HOSES NOT SHOWN FOR CLARITY)



**FIGURE C**  
INSTALLATION  
JD750 SHOWN



**FIGURE E**  
HOSE GUARD INSTALLATION  
DIFFERENT TRACTOR CONFIGURATION  
SHOWN WITH CAB MOVED FORWARD



**Mounting Parts**

John Deere 750J (H5CH1E\*\*E48)

Page 2 of

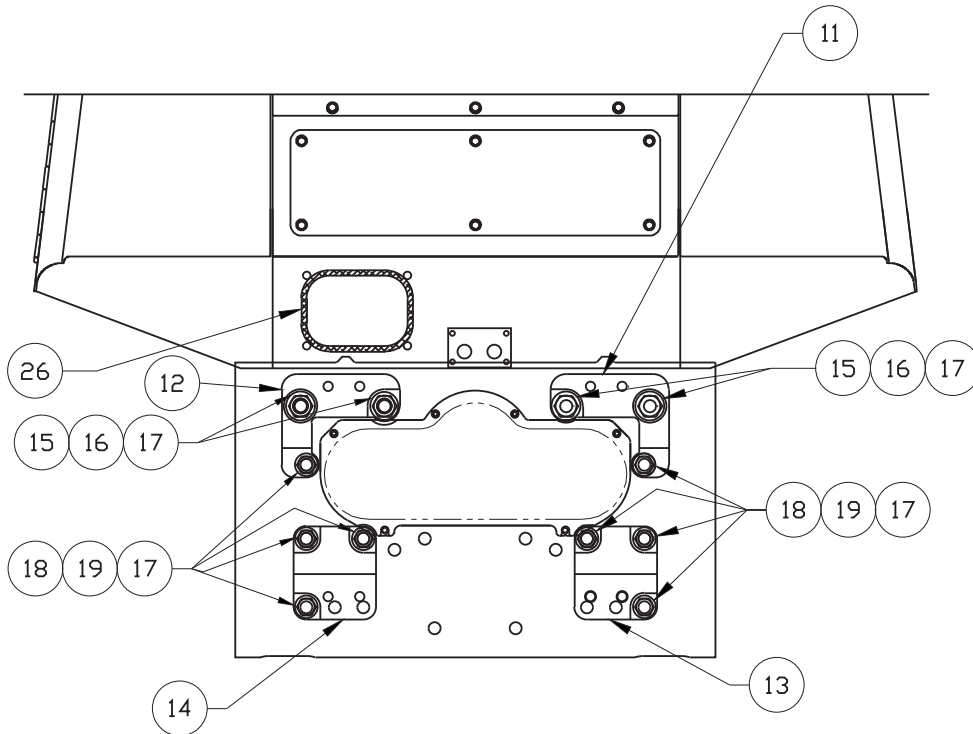
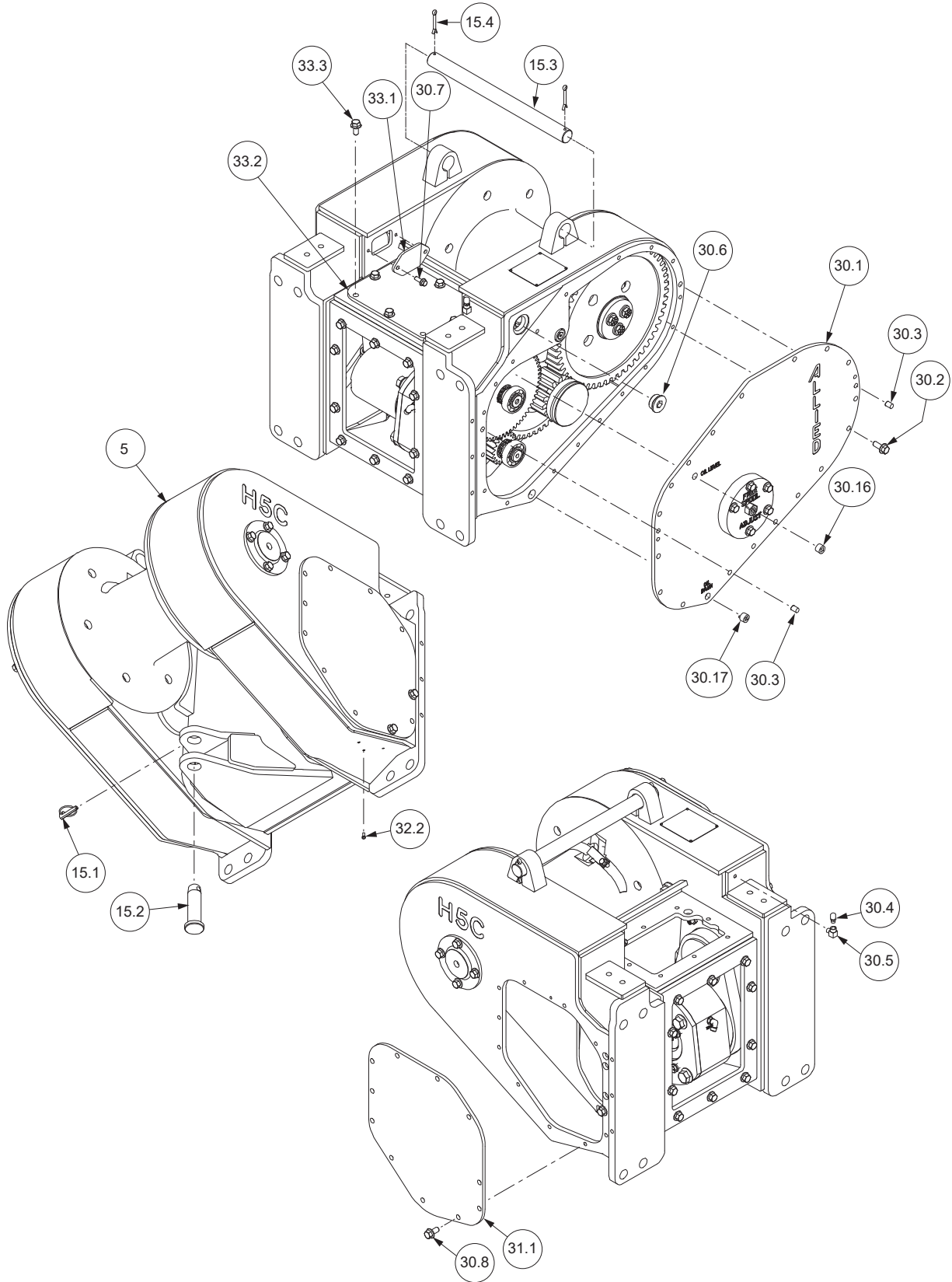


FIGURE B: JD750J REAR FACE  
TRACTOR PREPERATION

Item	Part No.	Qty	Description	Item	Part No.	Qty	Description
1	2307054W	1	. Decal, FS, Hi-Speed, Brake-Off	18	18672W	8	. Capscrew
2	2307121W	1	. Decal, Winch In	19	221780W	16	. Washer
3	2307122W	1	. Decal, Winch Out	20	221692W	8	. Capscrew
4	2307051W	1	. Switch Panel Assy (p. 44)	21	2310276	1	. Cover, Hose
5	15127W	2	. Washer	22	398820W	2	. Screw
6	15113W	2	. Locknut	23	221711W	2	. Hex Nut
7	2310278	1	. Cover, Hose	24	1314566W	10	. Screw
8	2307103W	1	. Fitting,	26	225871	3'	. Trim, Edge
9	220000W	2	. Bolt	27	129563W	10	. Cable Tie
10	2307292W	1	. Wire Harness	28	R12577882	3'	. Sleeve, Cordura
11	2302923W	1	. Block, Upper RH Mounting	29	R12577880	6'	. Sleeve, Cordura
12	2302924W	1	. Block, Upper LH Mounting	30	2307274W	2	. Hose Assembly
13	2302925W	1	. Block, Lower RH Mounting	31	R13661	1	. Relay
14	2302926W	1	. Block, Lower LH Mounting	32	2307532W	1	. Plate
15	17384W	4	. Capscrew	33	2310315	1	. Weldment, Cover, Hose
16	225851	4	. Washer	34	2310314	1	. Cover, Hose
17	318702W	AR	. Threadlock	35	221771W	2	. Washer
				36	2305715W	8	. Washer

**Frame and Covers**  
John Deere 700K (H5CT1D\*\*E391)  
Page 1 of 2



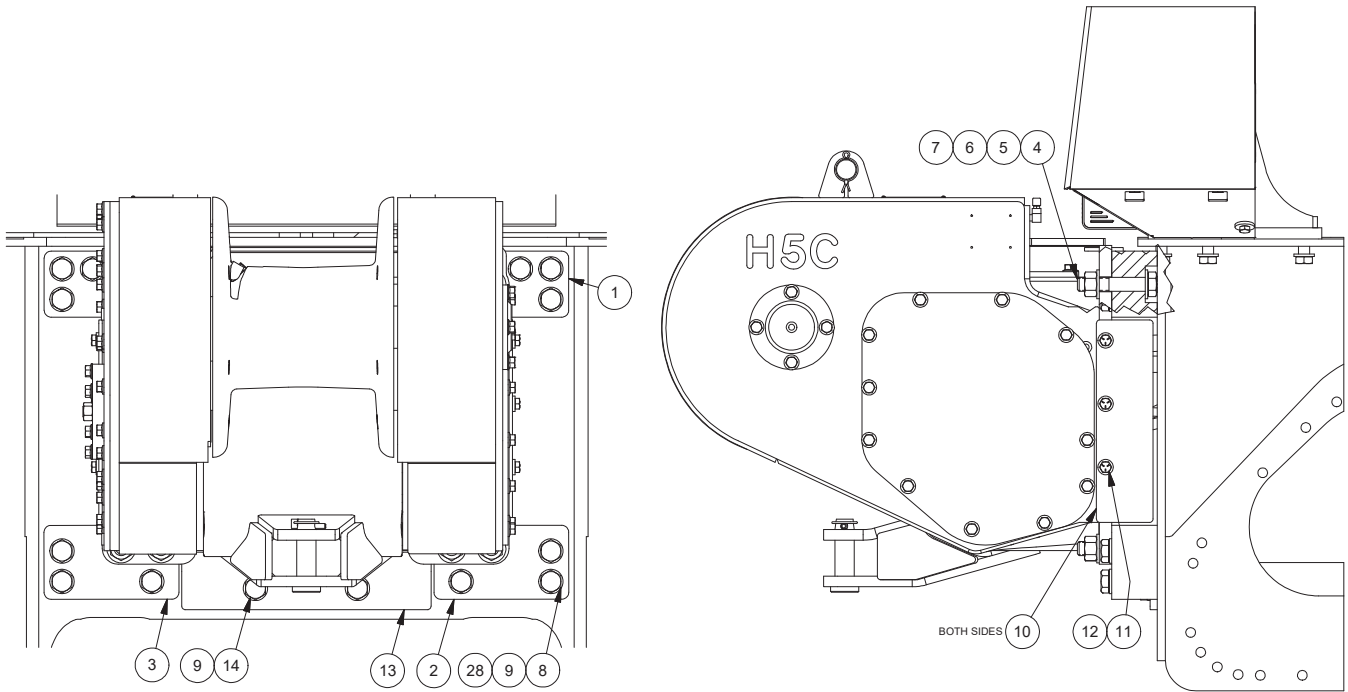
## Frame and Covers

John Deere 700K (H5CT1D\*\*E391)  
Page 2 of 2

Item	Part No.	Qty	Description	Item	Part No.	Qty	Description
5	2306189W	1	Frame	30.8	398817W	15	Screw, Flange
15.1	2303221W	1	Pin, Retaining	30.9	264159W	1	Adhesive
15.2	1314656W	1	Pin, Drawbar	30.12	16243W	1	Screw
15.3	93927W	1	Rod, Tie	30.16	15315W	1	Fitting
15.4	15256W	2	Cotter Pin	30.17	15290W	1	Fitting
30.1	2306570W	1	Cover, LH	31.1	2307097W	1	Cover, RH
30.2	2303848W	18	Screw, Flange	31.2	16243W	1	Set Screw
30.3	176208W	2	Pin	33.1	2307342W	1	Cover, Inner, RH
30.4	2304101W	1	Breather	33.2	2302513W	1	Cover, Top
30.5	16151W	1	Fitting	33.3	398817W	4	Screw, Flange
30.6	188210W	1	Fitting	33.4	16243W	1	Set Screw
30.7	398567W	2	Screw, Flange				

## Mounting Parts

John Deere 700K (H5CT1D\*\*E391)



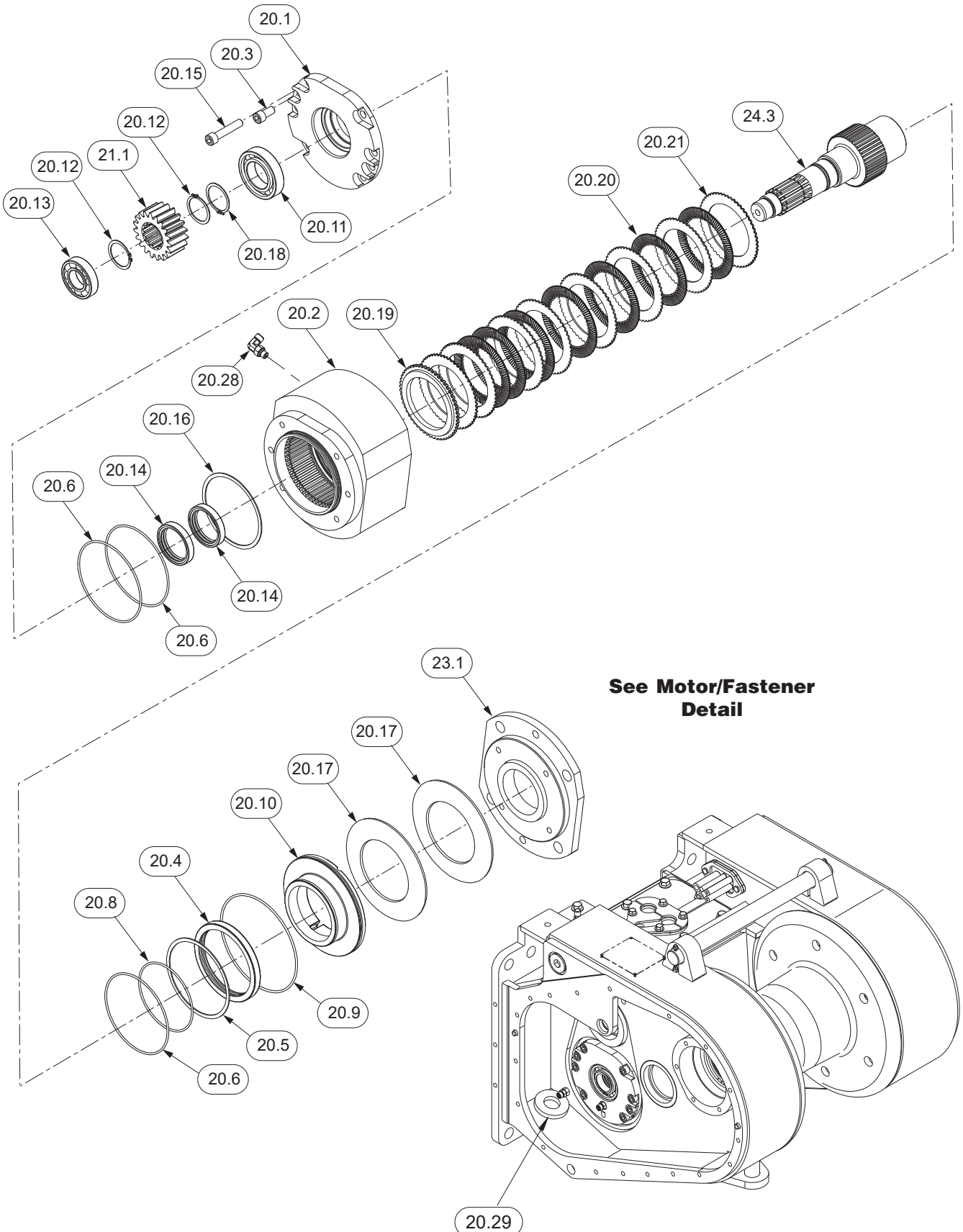
Item	Part No.	Qty	Description	Item	Part No.	Qty	Description
1	2303730W	1	. Bracket, Mounting, Top	10	2304611W	2	. Guard, Side
2	2303731W	1	. Block, Mounting Bottom RH	11	18586W	6	. Capscrew
3	2303732W	1	. Block, Mounting Bottom LH	12	221771W	6	. Washer
4	230687W	8	. Capscrew	13	2304612W	1	. Guard, Bottom
5	221780W	16	. Washer	14	2304613W	2	. Capscrew
6	221720W	8	. Hex Nut	15	2315688	1	. Assy, Switch Panel (See p. 43)
7	230064W	1	. Kit, Primer	28	318702W	AR	. Threadlock
8	293732W	12	. Capscrew				
9	296434W	14	. Washer				

**Section 2**  
**Gear/Shaft Train**

### Motor Shaft Assembly

John Deere700J (H5CT1D\*\*E391), 750J (H5CH1E\*\*E48)

Page 1 of 2

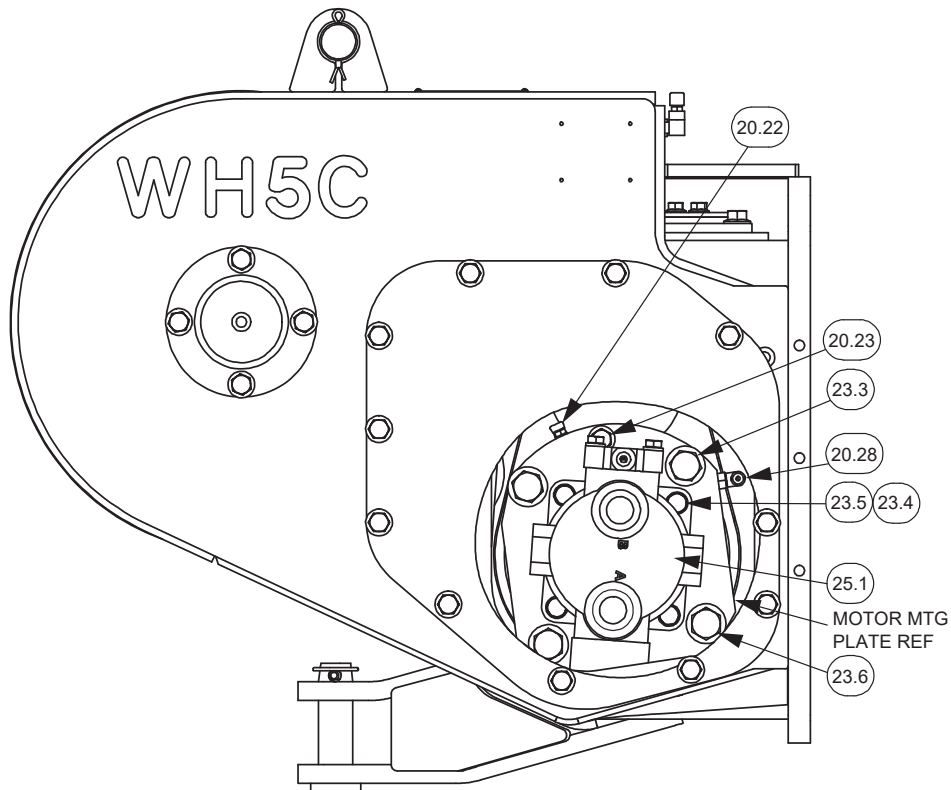


### Motor Shaft Assembly

John Deere700J (H5CT1D\*\*E391), 750J (H5CH1E\*\*E48)

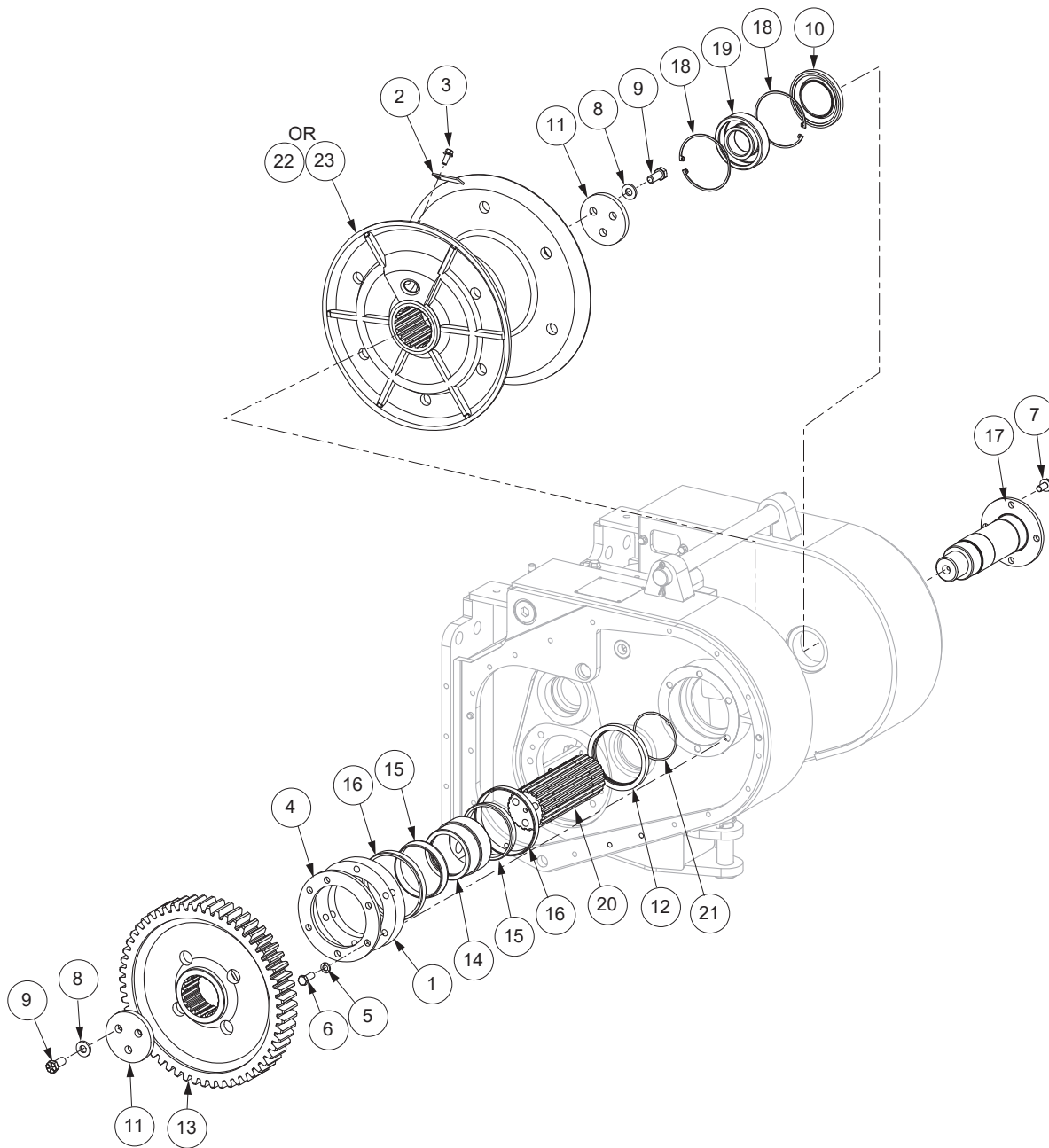
Page 2 of 2

Item	Part No.	Qty	Description	Item	Part No.	Qty	Description
20.1	2314062	1	Plate, Mounting, Brake	20.20	2306198W	7	Disc, Friction
20.2	2306078W	1	Housing, Brake	20.21	2304874W	8	Plate, Separator
20.3	Y73G-0816	2	Capscrew	20.22	NA	NA	Fitting
20.4	2306599W	1	Sleeve	20.23	398820W	2	Screw
20.5	2306604W	1	Snap Ring	20.25	313022W	1	Adhesive (Use on 20.23)
20.6	89776W	3	O-Ring	20.28	R833251	1	Fitting
20.8	86596W	1	O-Ring	20.29	R525293	1	Magnet, Ceramic
20.9	87287W	1	O-Ring	21.1	2306228W	1	Gear, 19T
20.10	2306077W	1	Piston, Brake	23.1	2306214W	1	Plate, Mounting, Motor
20.11	41210W	1	Bearing, Ball	23.3	398828W	2	Screw, Flg
20.12	12916W	2	Snap Ring	23.4	15158W	4	Lockwasher
20.13	41207W	1	Bearing, Ball	23.5	18588W	4	Capscrew
20.14	2306073W	2	Seal	23.6	917373W	2	Capscrew
20.15	Y73G-0840	6	Capscrew	24.3	2306494W	1	Shaft
20.16	334475W	1	Ring, Snap, Int	25.1	2306938W	1	Motor, Hydraulic 2 Speed (See p. 23)
20.17	219084W	2	Spring				
20.18	12944W	1	Snap Ring				
20.19	334442W	1	Plate, Pressure				



**Motor/Fastener Detail**

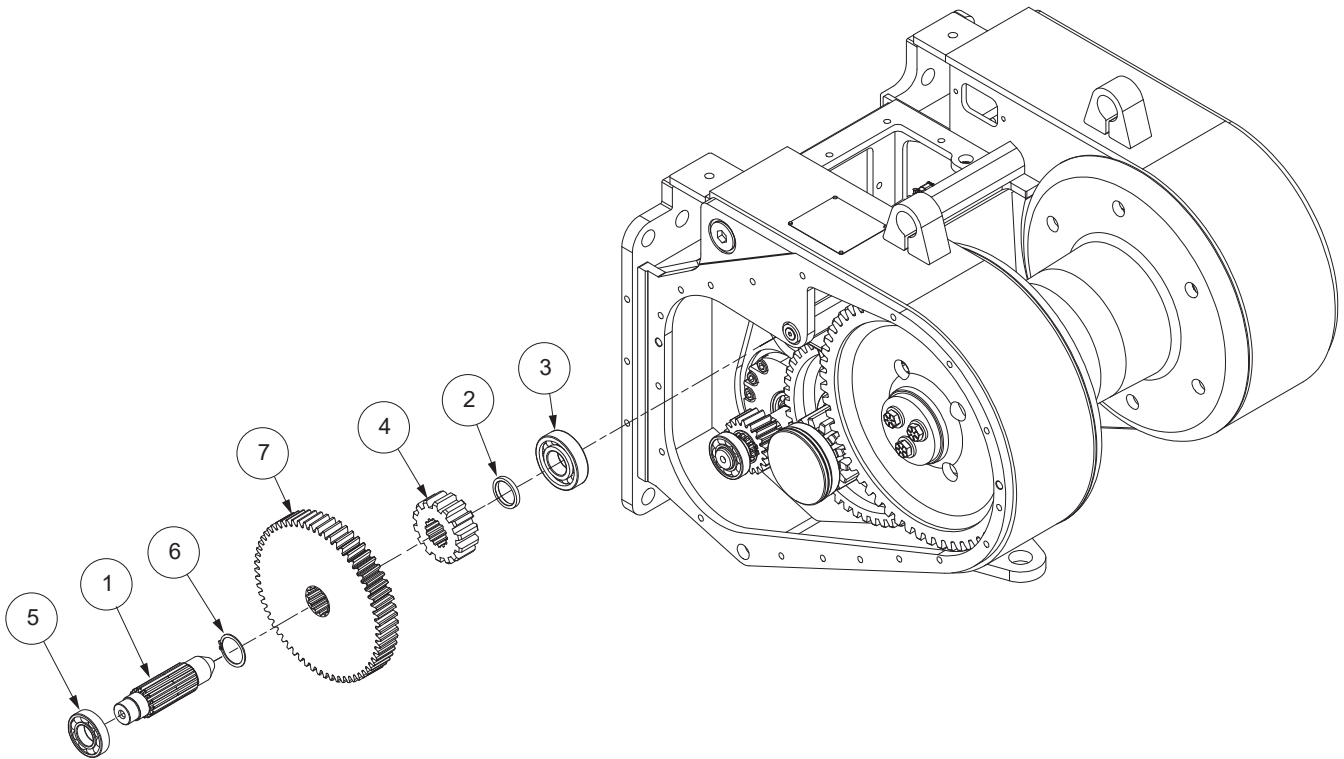
# Drum Shaft



Item	Part No.	Qty	Description	Item	Part No.	Qty	Description
1	2303257W	AR	Shim, .005	14	2302335W	1	Spacer
2	1314503W	1	Keeper, Ferrule	15	219093W	2	Cone, Roller Bearing
3	1300780W	1	Screw, Flange	16	219094W	2	Cup, Roller Bearing
4	2303256W	1	Retainer	17	2302379W	1	Shaft, Drum
5	15158W	6	Washes	18	12956W	2	Ring, Snap
6	16830W	6	Cap screws	19	219095W	1	Bearing, Roller
7	2303902W	4	Screw, Flange	20	2302334W	1	Shaft, Drum
8	221775W	6	Washer	21	203533	1	O-Ring
9	Y17C-1024	6	Cap screws	22	2302338W	1	Drum, Overwind
10	133523W	1	Seal, Oil				
11	*a 2302336W	2	Retainer	*a	Use 313022W Adhesive		
12	339681W	1	Seal, Oil				
13	2302333W	1	Gear, Drum				

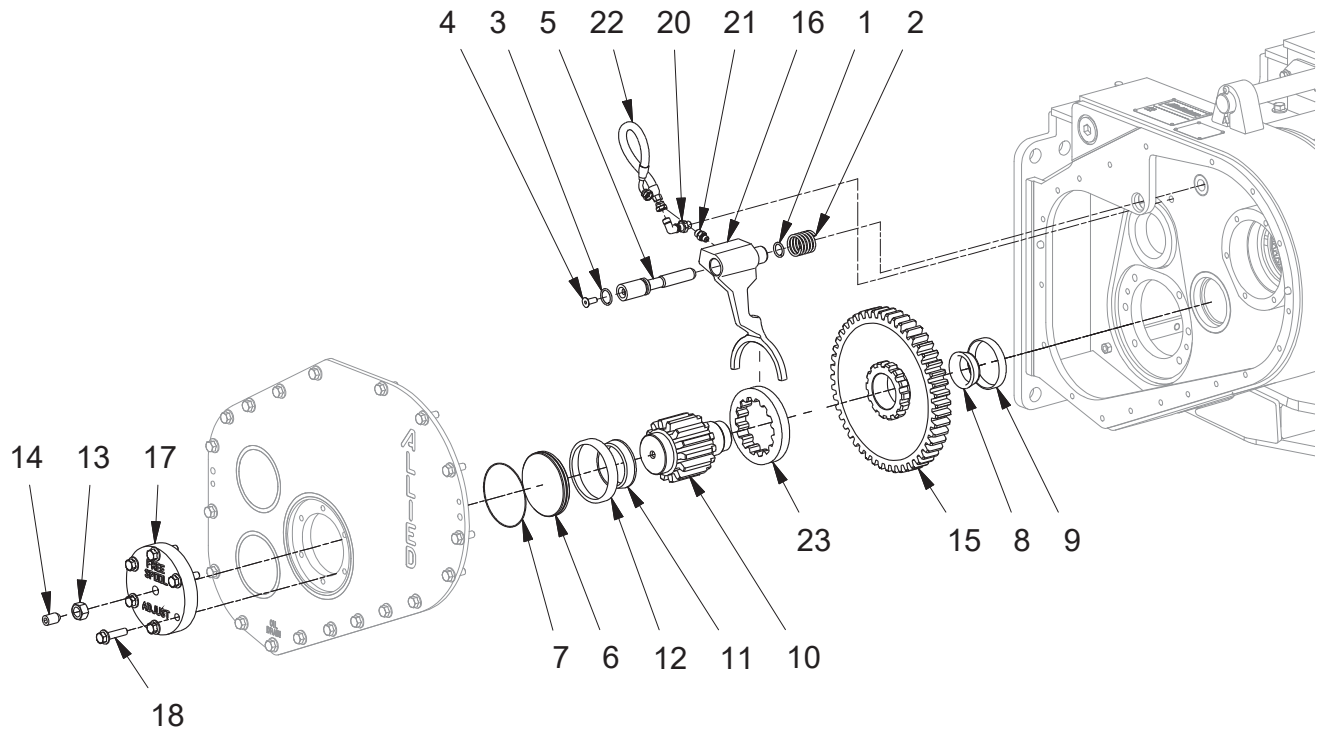


Shaft, Idler



Item	Part No.	Qty	Description	Item	Part No.	Qty	Description
1	2307282W	1	Shaft, Idler	6	12916W	1	Ring, Snap
2	2300842W	1	Spacer	7	2306229W	1	Gear, 62T (Ratio #1 Only)
3	2304580W	1	Bearing, Cylinder Roller	*a	2311412	1	Gear, 84T (Ratio #2 Only)
4	219066W	1	Gear, Pinion				
5	41207W	1	Bearing, Ball	*a	First Used on S/N H5C*****1024		

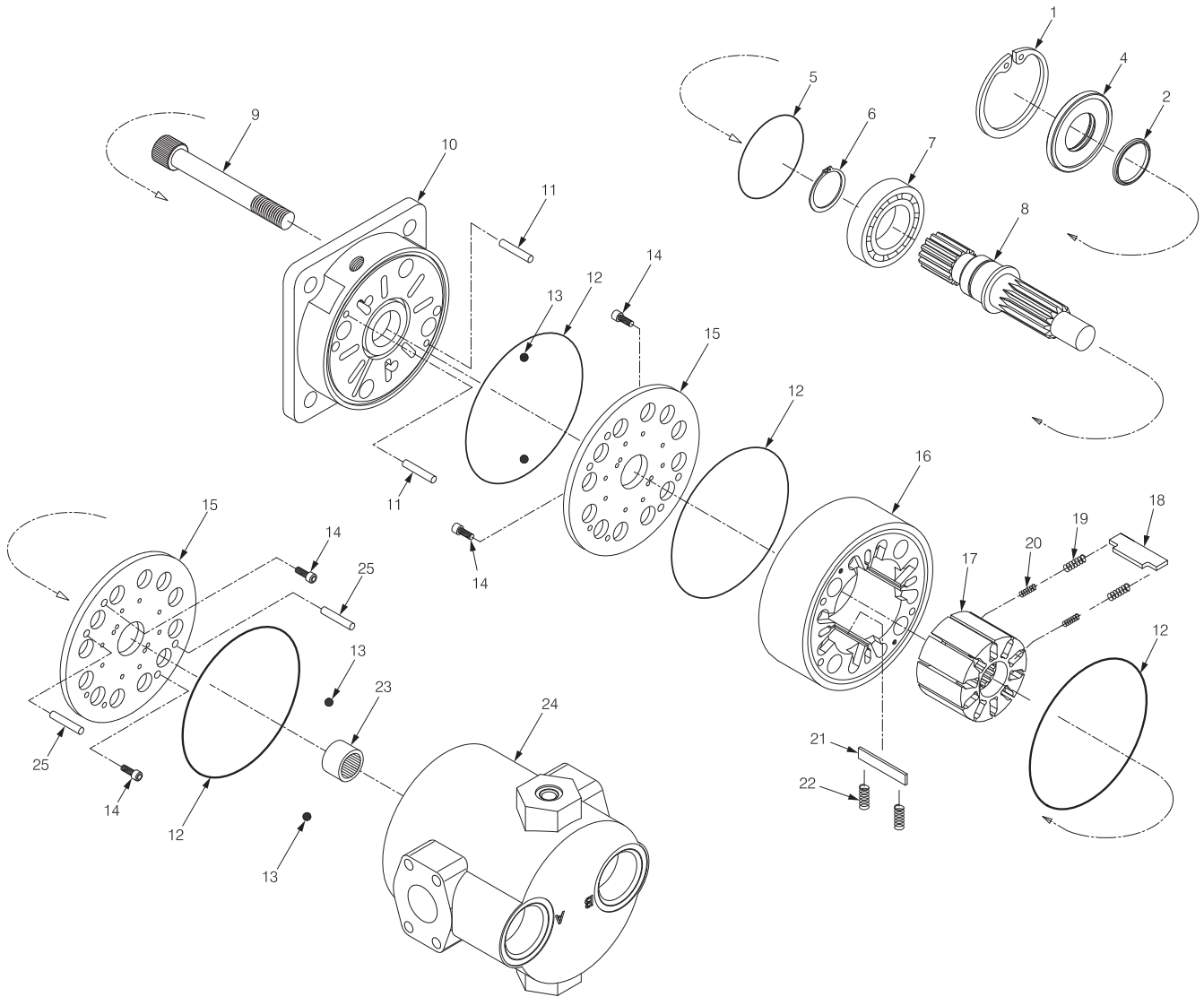
## Intermediate Gear Shaft With Freespool



Item	Part No.	Qty	Description	Item	Part No.	Qty	Description
1	218214	1	O-Ring	14	2304803W	1	Screw
2	2303906W	1	Spring, Freespool	15	225050W	1	Assy, Intermediate Gear
3	212380	1	O-Ring	16	2303908W	1	Fork, Freespool Shifter
4	Y09G-0616	1	Capscrew	17	2302625W	1	Housing, Freespool Adjust
5	2303907W	1	Shaft, Freespool	18	2305415W	6	Screw, Flange
6	2302624W	1	Piston, Freespool Adjust	20	2307081W	1	Fitting
7	159940W	1	O-Ring	21	231439	1	Fitting
8	2305923W	1	Cone, Roller Bearing	22	*a 2307037W	1	Assy, Hose
9	45733W	1	Cup, Roller Bearing	23	224108W	1	Clutch, Dental
10	2305915W	1	Shaft, Pinion				
11	219114W	1	Cone, Roller Bearing				
12	2302515W	1	Cup, Roller Bearing				
13	221717W	1	Nut				

\*a Use 313022W Pipe Thread Sealant

# Hydraulic Motor, 2-Speed



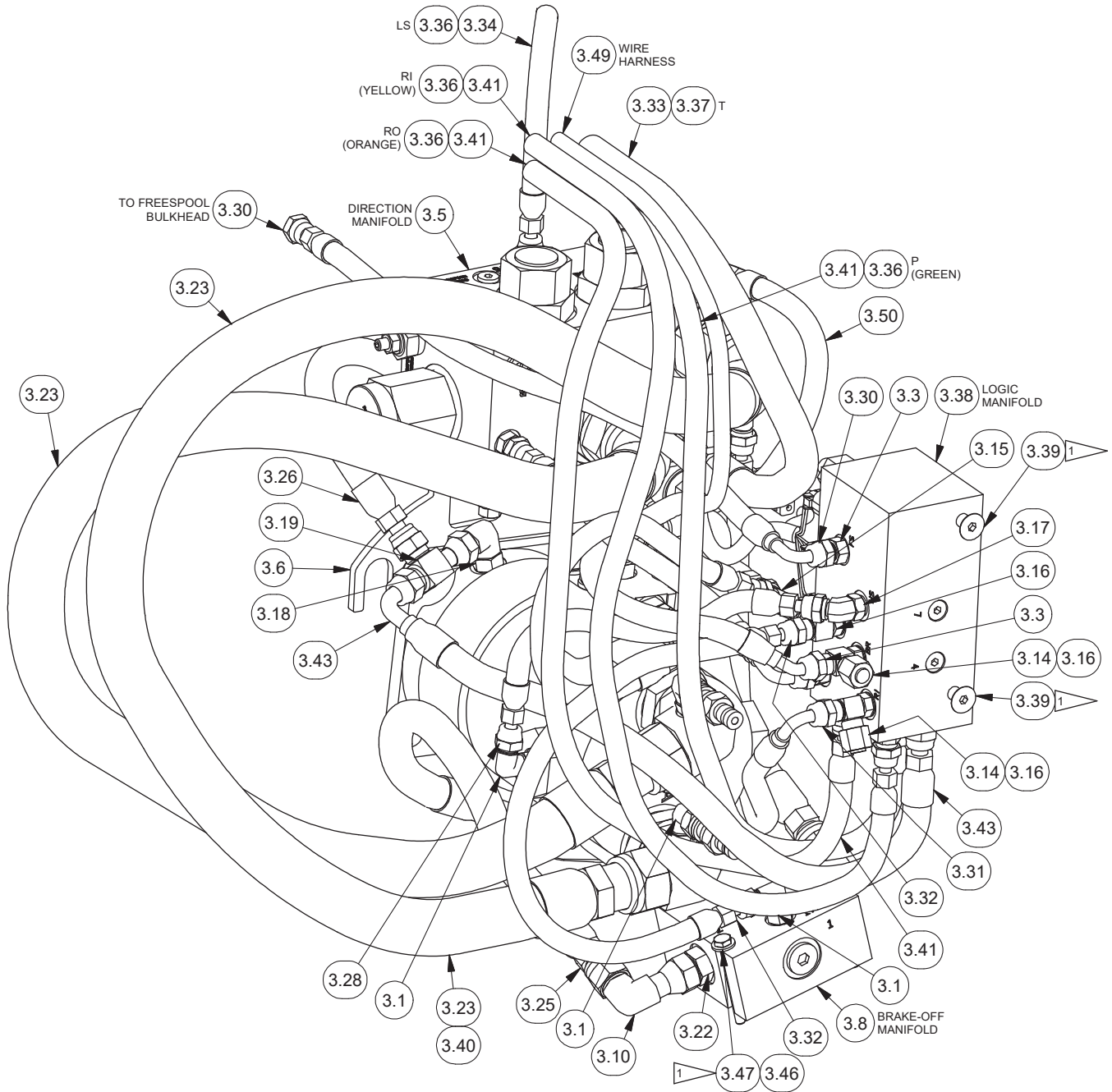
Item	Part No.	Qty	Description	Item	Part No.	Qty	Description
<b>2306938W Hydraulic Motor, 2-Speed</b>							
1	*a 238060	1	. Ring, Snap	15	2307962W	2	. Plate, Timing
2	*a 238056	1	. Seal	16	238070	1	. Stator
4	*a 238061	1	. Seal Plate	17	238073	1	. Rotor
5	*a 238058	1	. O-Ring	18	*b 238074	10	. Vane, Rotor
6	238062	1	. Ring, Snap	19	*b 238075	20	. Spring, Outer
7	238063	1	. Bearing	20	*b 238076	20	. Spring, Inner
8	238064	1	. Shaft	21	*b 238072	4	. Vane, Stator
9	238065	4	. Bolt	22	*b 238071	8	. Spring, Vane
10	NSS	1	. Housing	23	238078	1	. Bearing, Needle
11	238067	2	. Pin, Front Dowel	24	NSS	1	. Rear Housing
12	*a 238059	4	. O-Ring	25	238080	2	. Pin, Rear Dowel
13	238077	4	. Check, Ball				
14	238068	4	. Screw				
				*a	Included in Seal Kit 2307244W		
				*b	Included in Vane & Spring Kit 246726		

**Intentionally Blank**

**Section 3**  
**Hydraulics/Electrical/Controls**

# Hydraulic Group

John Deere 750J (H5CH1E\*\*E48)  
Page 1 of 4



- NOTES: 1 APPLY MEDIUM STRENGTH LOCTITE HCE-67 TO ALL FASTENERS.
- 2 APPLY HCE-98 GASKET ELIMINATOR.

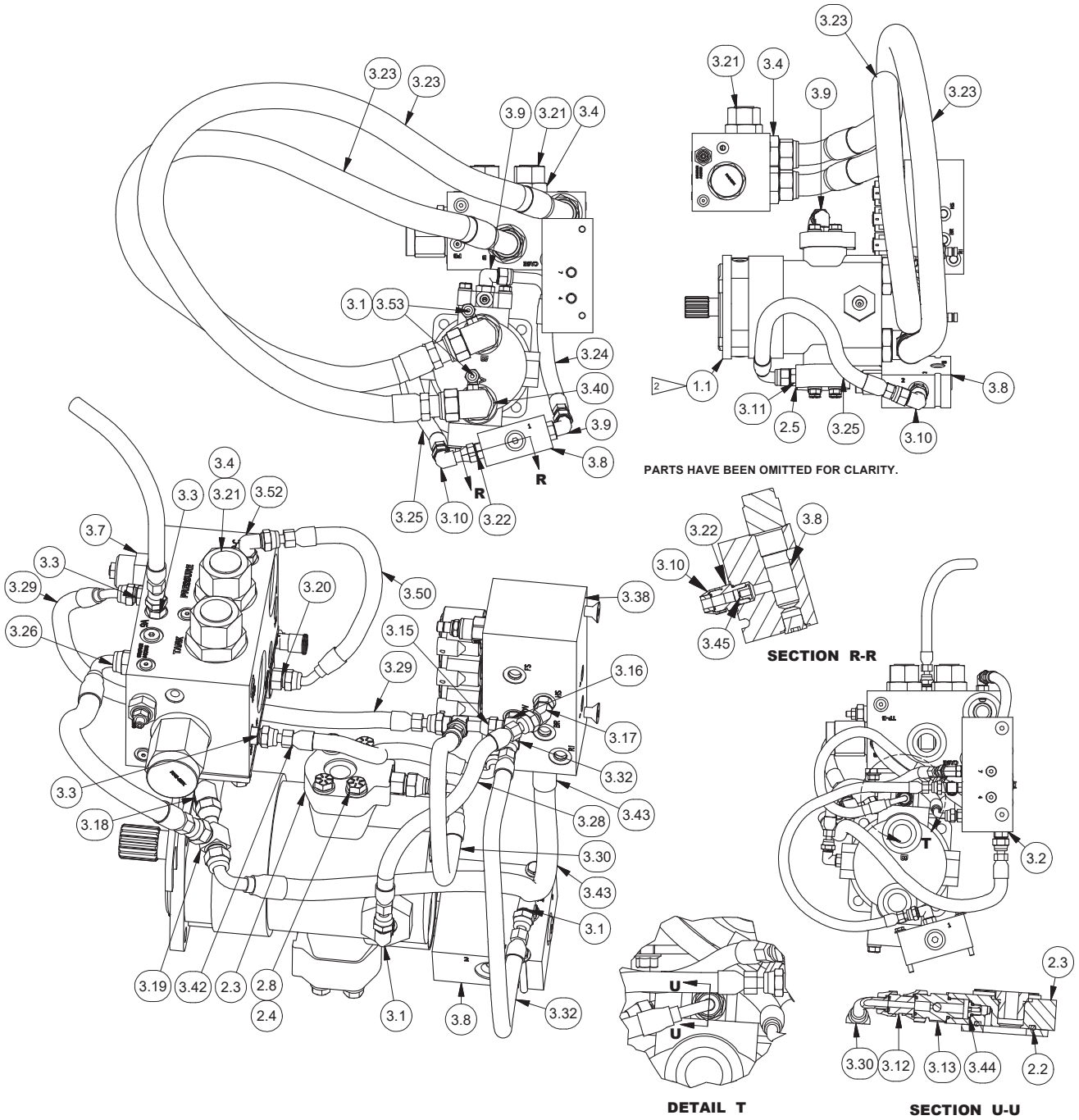
## Hydraulic Group

John Deere 750J (H5CH1E\*\*E48)  
Page 2 of 4

Item	Part No.	Qty	Description	Item	Part No.	Qty	Description
1.1	2306938W	1	Motor, Hydraulic (See p. 23)	3.22	2307456W	1	Fitting
2.4	15157W	8	Lockwasher	3.23	2307283W	2	Hose Assembly
2.5	2307432W	1	Manifold	3.24	2307470W	1	Hose Assembly
2.6	R13811059	4	Capscrew	3.25	2307471W	1	Hose Assembly
3.1	R833251	5	Fitting	3.26	2307039W	1	Hose Assembly
3.2	231440	3	Fitting	3.27	2307033W	1	Hose Assembly
3.3	231439	9	Fitting	3.28	2313153	1	Hose Assembly
3.4	R833133	4	Fitting	3.29	2307036W	1	Hose Assembly
3.5	2307008W	1	Directional Manifold (See p. 38)	3.30	2307032W	2	Hose Assembly
3.6	2307061W	1	Bracket, Manifold	3.31	2307206W	1	Hose Assembly
3.7	2307265W	1	Valve, Counterbalance	3.32	2307472W	1	Hose Assembly
	243815	1	. Seal Kit	3.33	2307213W	1	Hose Assembly, Drain
3.8	2307443W	1	Bypass Manifold (See p. 39)	3.34	2307040W	1	Hose Assembly
3.9	231452	2	Fitting	3.35	398567W	2	Screw, Flange
3.10	R833802	1	Fitting	3.36	R834201	4	Fitting
3.11	231441	1	Fitting	3.37	232960	1	Fitting
3.12	242629	1	Fitting	3.38	2311614	1	Control Manifold Assy (See p. 40)
3.13	2307398W	1	Valve	3.39	Y09G-0616	2	Capscrew
3.14	232984	2	Fitting	3.40	2307123W	2	Fitting
3.15	236855	1	Fitting	3.41	2307042W	3	Hose Assembly, RO
3.16	R833400	3	Fitting	3.42	2307038W	1	Hose Assembly
3.17	R833200	1	Fitting	3.43	2307613W	1	Hose Assembly
3.18	R833257	1	Fitting	3.44	2307446W	1	Fitting, Orifice
3.19	231955	1	Fitting	3.45	2307482W	1	Fitting
3.20	2307291W	1	Switch	3.46	18475W	2	Capscrew
3.21	231820	2	Fitting	3.47	15127W	2	Washer
	232383	1	. O-Ring	3.48	R2528352	1	Clip, Insul
				3.49	2307293W	1	Wire Harness
				3.50	2307344W	1	Hose Assembly, PRSW
				3.52	2311500	1	Fitting Assembly
				3.53	2307625W	2	Fitting

# Hydraulic Group

John Deere 750J (H5CH1E\*\*E48)  
Page 3 of 4

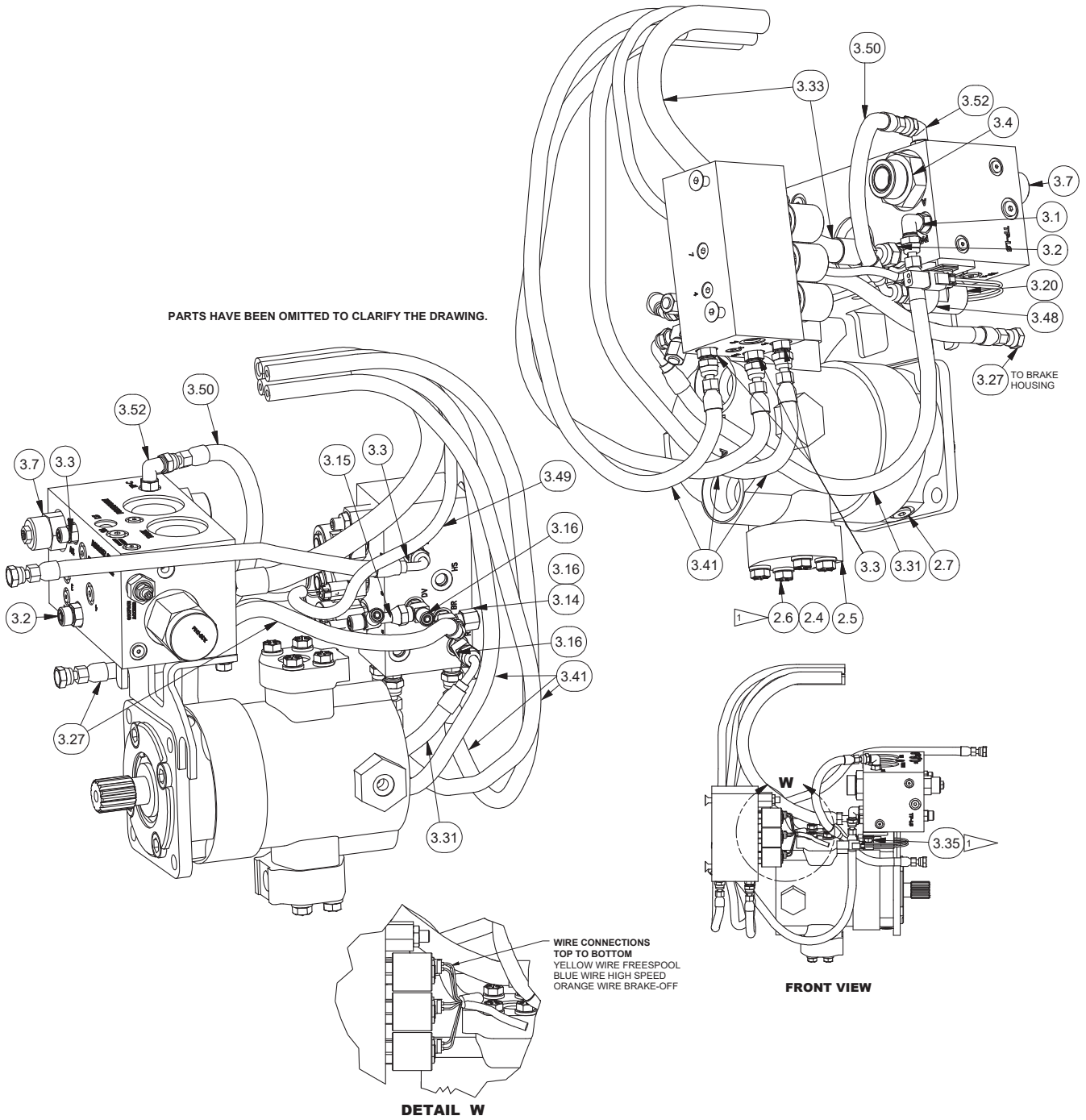




# Hydraulic Group

John Deere 750J (H5CH1E\*\*E48)  
Page 4 of 4

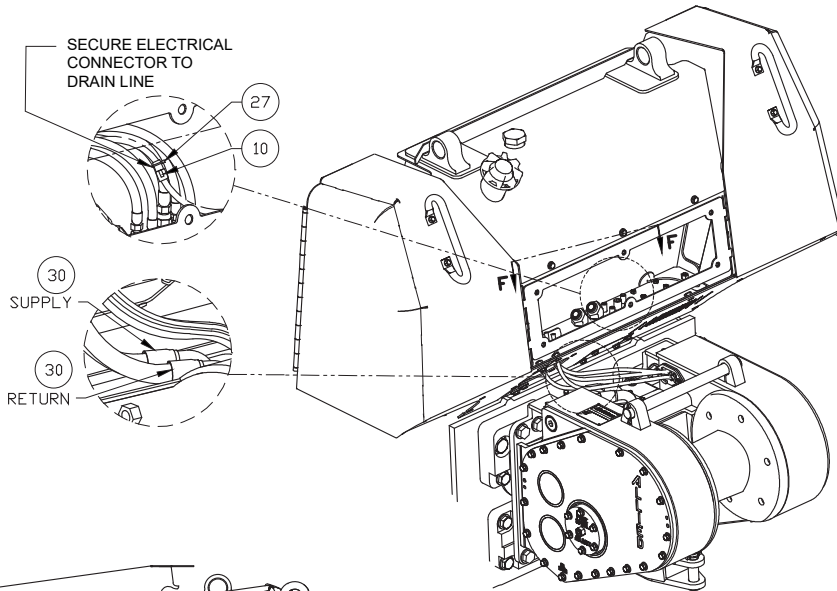
PARTS HAVE BEEN OMITTED TO CLARIFY THE DRAWING.



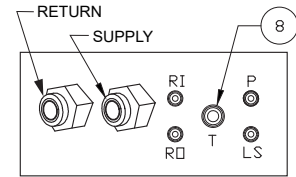
# Electrical/Control Installation

John Deere 750J (H5CH1E\*\*E48)

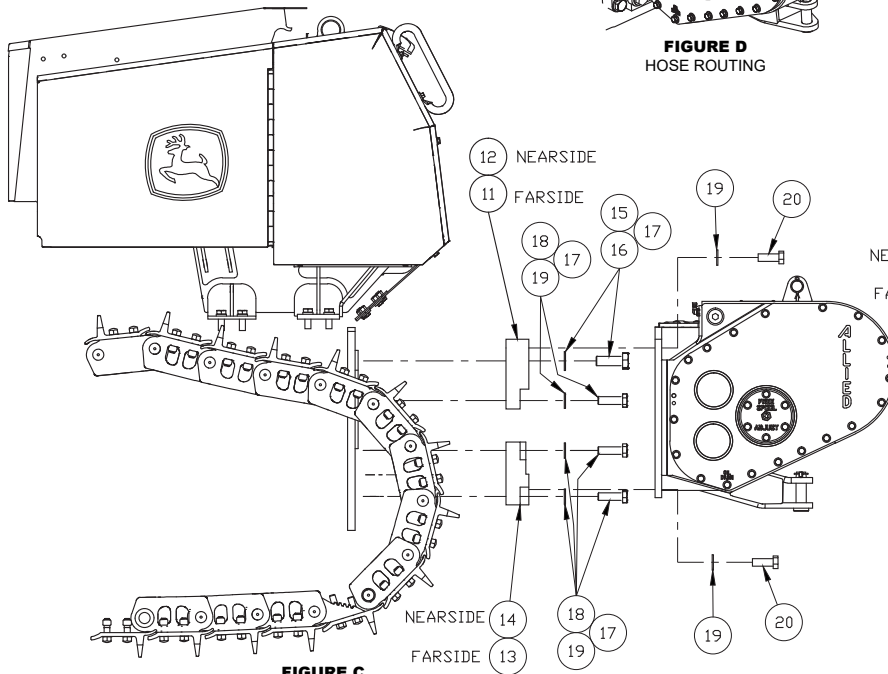
Page 1 of 3



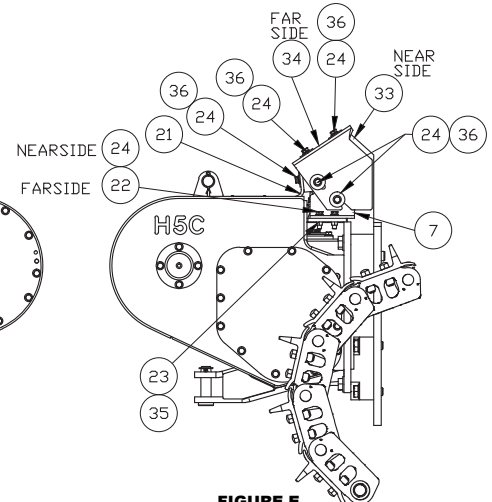
**FIGURE D**  
HOSE ROUTING



**DETAIL F**  
TRACTOR HYDRAULIC CONNECTIONS  
(HOSES NOT SHOWN FOR CLARITY)



**FIGURE C**  
INSTALLATION  
JD750 SHOWN

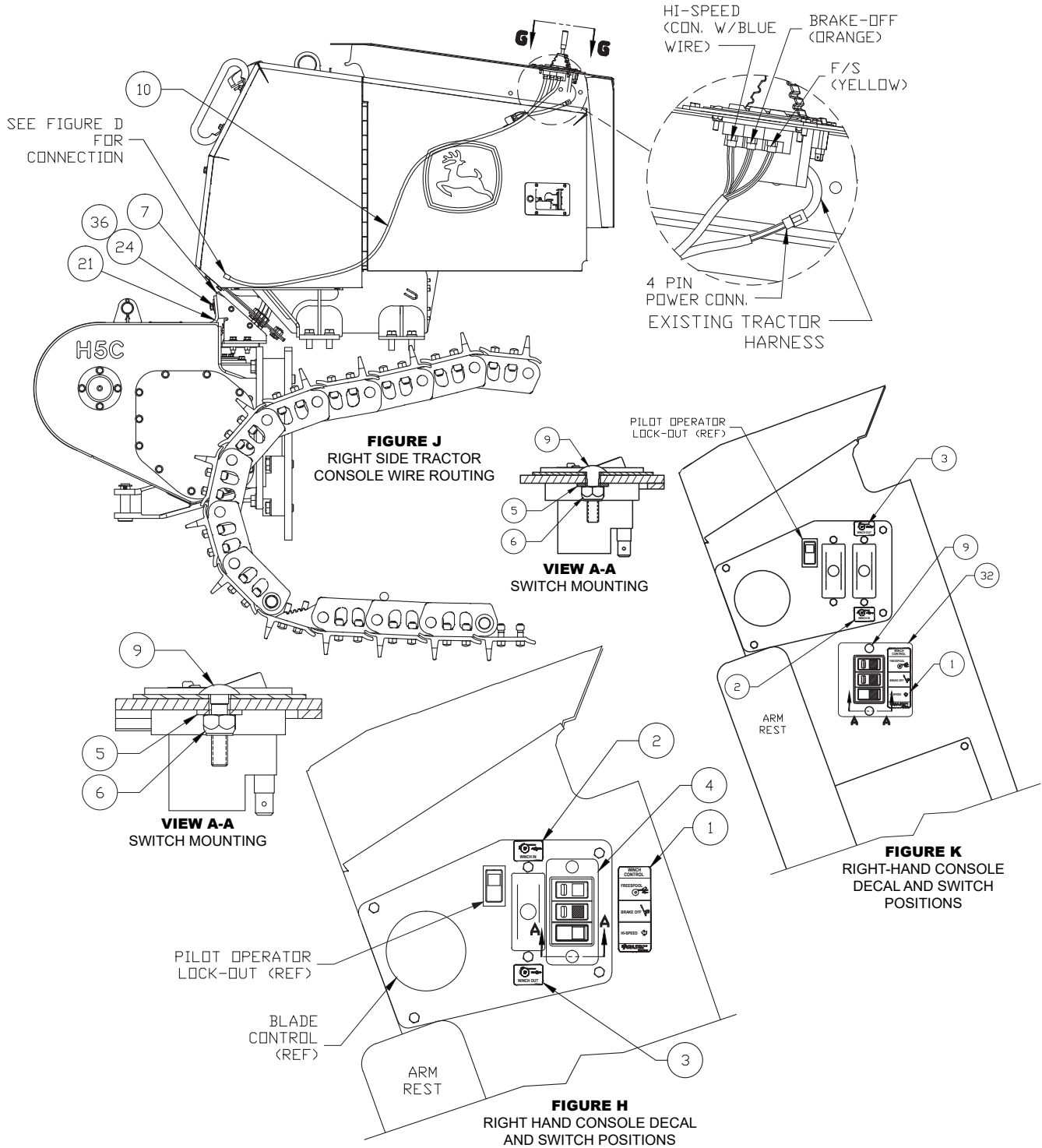


**FIGURE E**  
HOSE GUARD INSTALLATION  
DIFFERENT TRACTOR CONFIGURATION  
SHOWN WITH CAB MOVED FORWARD

# Electrical/Control Installation

John Deere 750J (H5CH1E\*\*E48)

Page 2 of 3



## Electrical/Control Installation

John Deere 750J (H5CH1E\*\*E48)

Page 3 of 3

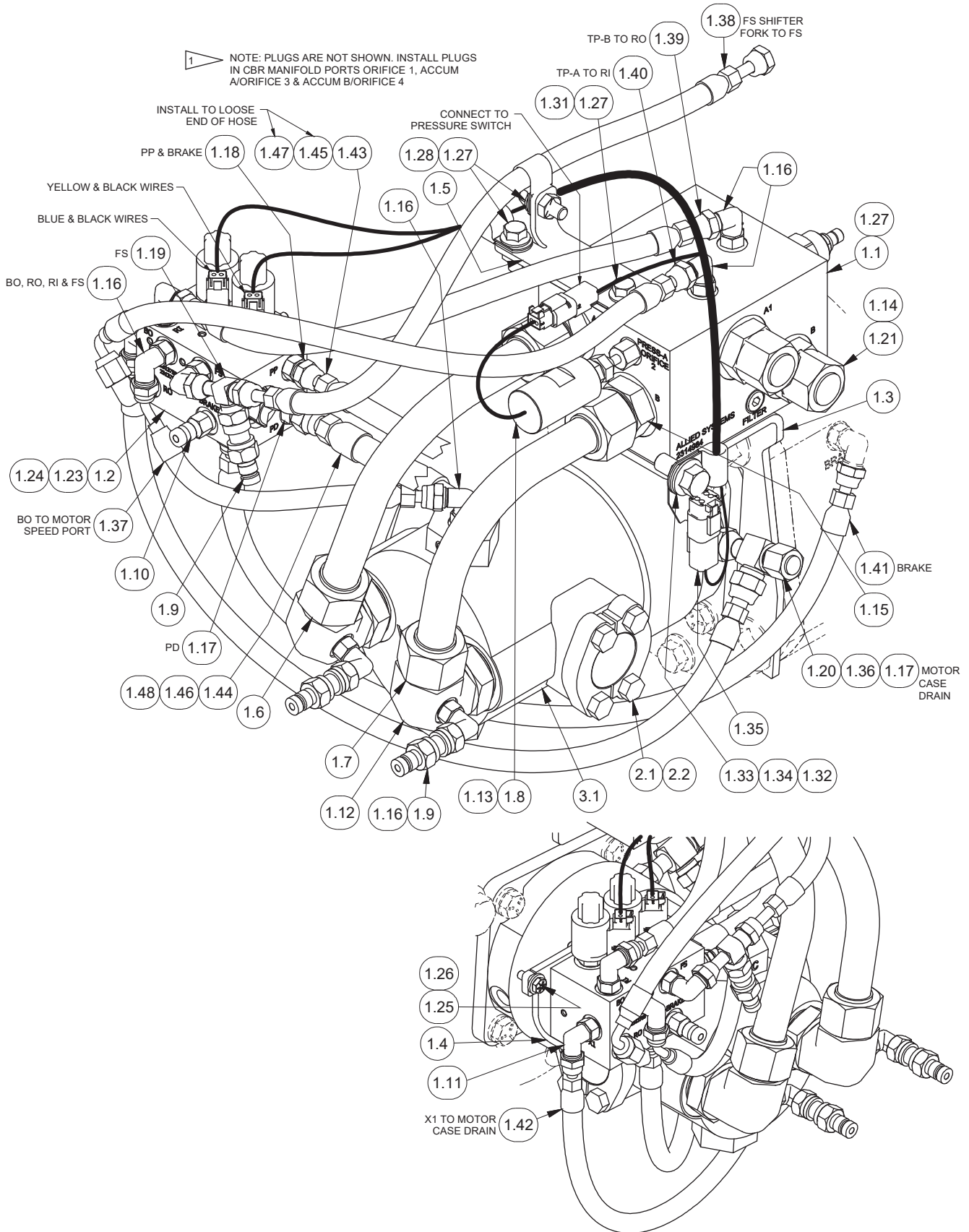
Item	Part No.	Qty	Description	Item	Part No.	Qty	Description
1	2307054W	1	. Decal, FS, Hi-Speed, & Brake Off	18	18672W	8	. Capscrew
2	2307121W	1	. Decal, Winch In	19	221780W	16	. Washer
3	2307122W	1	. Decal, Winch Out	20	221692W	8	. Capscrew
4	2307051W	1	. Switch Panel Assy (See p. 44)	21	2310276	1	. Cover, Hose
5	15127W	2	. Washer	22	398820W	2	. Screw
6	15113W	2	. Locknut	23	221711W	2	. Hex Nut
7	2310278	1	. Cover, Hose	24	1314566W	10	. Screw
8	2307103W	1	. Fitting	26	225871	3'	. Trim, Edge
9	220000W	2	. Bolt	27	129563W	10	. Cable Tie
10	2307292W	1	. Wire Harness	28	R12577882	3'	. Sleeve, Cordura
11	2302923W	1	. Block, Upper RH Mtg	29	R12577880	6'	. Sleeve, Cordura
12	2302924W	1	. Block, Upper LH Mtg	30	2307274W	2	. Hose Assembly
13	2302925W	1	. Block, Lower RH Mtg	31	R13661	1	. Relay
14	2302926W	1	. Block, Lower LH Mtg	32	2307532W	1	. Plate
15	17384W	4	. Capscrew	33	2310315	1	. Cover, Hose
16	225851	4	. Washer	34	2310314	1	. Cover, Hose
17	318702W	AR	. Threadlock	35	221771W	2	. Washer
				36	2305715W	8	. Washer

**Intentionally Blank**

# Hydraulic Group

John Deere 700K (H5CT1D\*\*E391)

Page 1 of 2



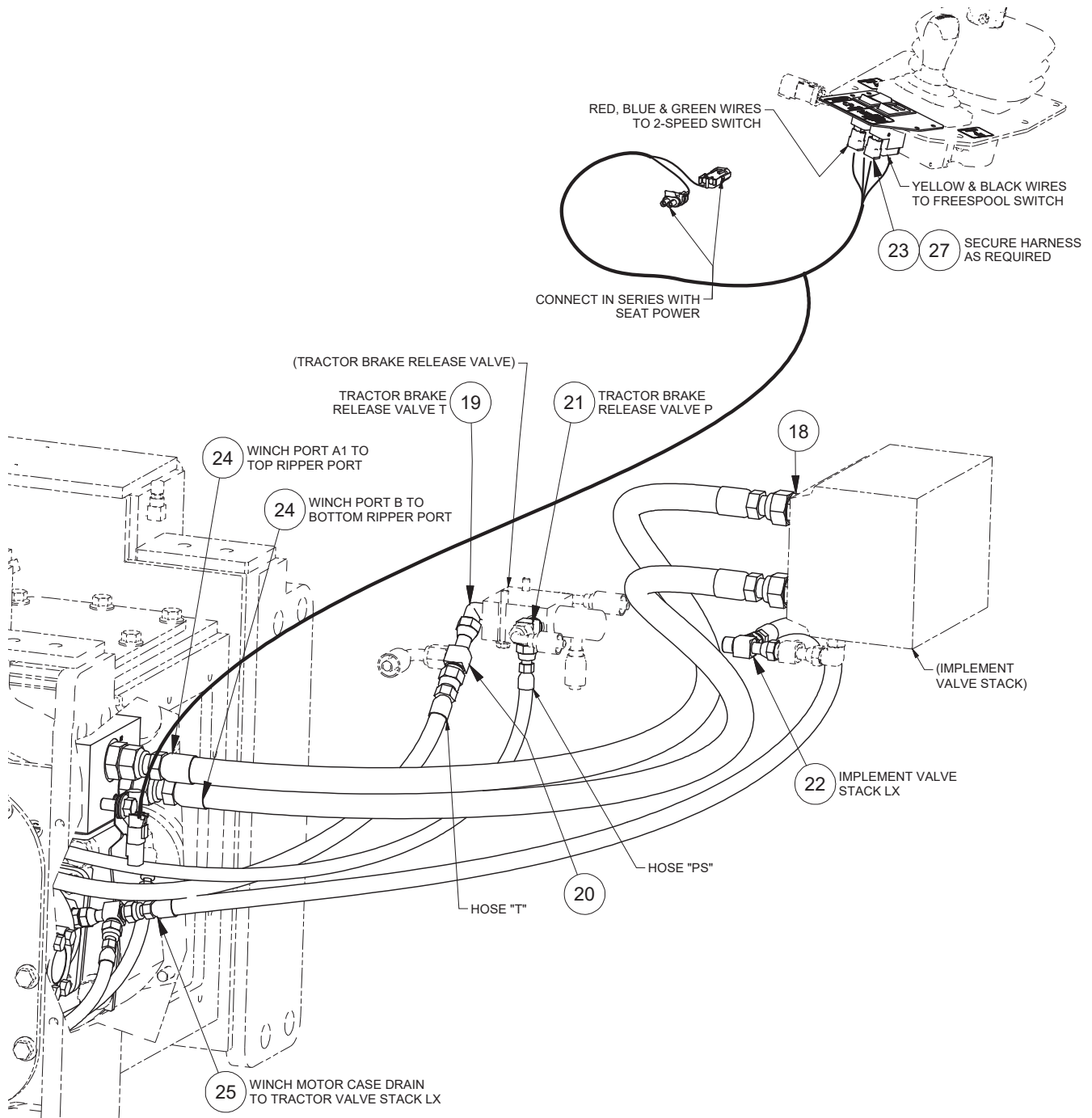
## Hydraulic Group

John Deere 700K (H5CT1D\*\*E391)  
Page 2 of 2

Item	Part No.	Qty	Description	Item	Part No.	Qty	Description
1.1	2314984	1	Counterbalance Manifold Assy (See p. 42)	1.24	296420W	2	Washer
1.2	2313758	1	Control Manifold Assy (See p. 41)	1.25	224120W	2	Capscrew
1.3	2314983	1	Bracket, Manifold	1.26	221763W	2	Washer
1.4	2313443	1	Bracket, Manifold	1.27	398567W	5	Screw, Flange
1.5	2316646	1	Bracket, Support, Hose	1.28	209579	2	Clip, Insul
1.6	2312197	1	Tube Assy, Motor A	1.31	2311550	1	Clip, Harness Mounting
1.7	2314986	1	Tube Assy, Motor B	1.32	2313663	1	Clip, Harness, Mounting
1.8	2307291W	1	Switch	1.33	398817W	1	Screw, Flange
1.9	2307625W	3	Fitting	1.34	R13807642	1	Clip, Insul
1.10	R14040	1	Coupler, Male	1.35	2315003	1	Harness, Wire, Winch
1.11	2311500	1	Fitting Assembly	1.36	231955	1	Fitting
1.12	2307123W	2	Fitting	1.37	2313639	1	Hose Assembly
1.13	2304147W	1	Fitting	1.38	257331	1	Hose Assembly
1.14	R833127	2	Fitting	1.39	2315374	1	Hose Assembly
1.15	231444	2	Fitting	1.40	2315375	1	Hose Assembly
1.16	R833251	9	Fitting	1.41	243178	1	Hose Assembly
1.17	231440	2	Fitting	1.42	2315687	1	Hose Assembly
1.18	231439	2	Fitting	1.43	2315695	1	Hose Assembly
1.19	236855	1	Fitting	1.44	2315696	1	Hose Assembly
1.20	231822	1	Fitting	1.45	R834201	1	Fitting
1.21	231821	2	Fitting	1.46	232960	1	Fitting
	232382	1	. O-Ring	1.47	2306152W	1	Label, PS
1.22	229383	3	Fitting	1.48	2306151W	1	Label, T
1.23	293628W	2	Capscrew	2.1	11740	2	Kit, Split Flange
				2.2	24531	2	Fitting

# Hydraulic/Electrical Installation

John Deere 700K (H5CT1D\*\*E391)

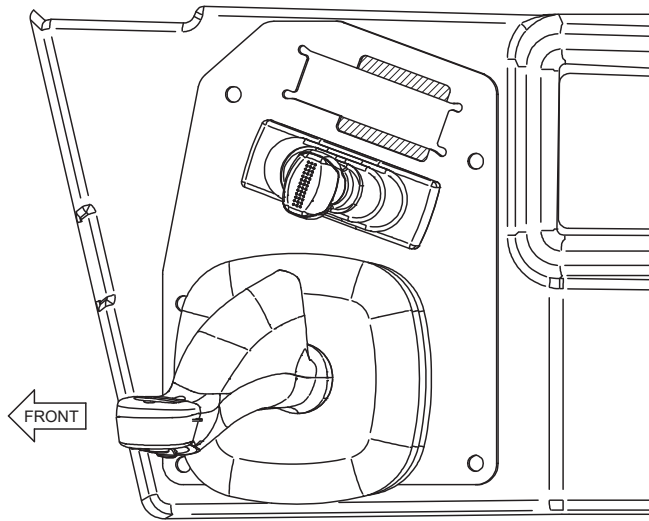


Item	Part No.	Qty	Description	Item	Part No.	Qty	Description
18	231443	2	Fitting	23	2315689	1	Harness, Wire, Console
19	R833261	1	Fitting	24	2315694	2	Hose Assembly
20	R834052	1	Fitting	25	242443	1	Hose Assembly
21	231465	1	Fitting	27	242587	20	Cable Tie
22	231955	1	Fitting				

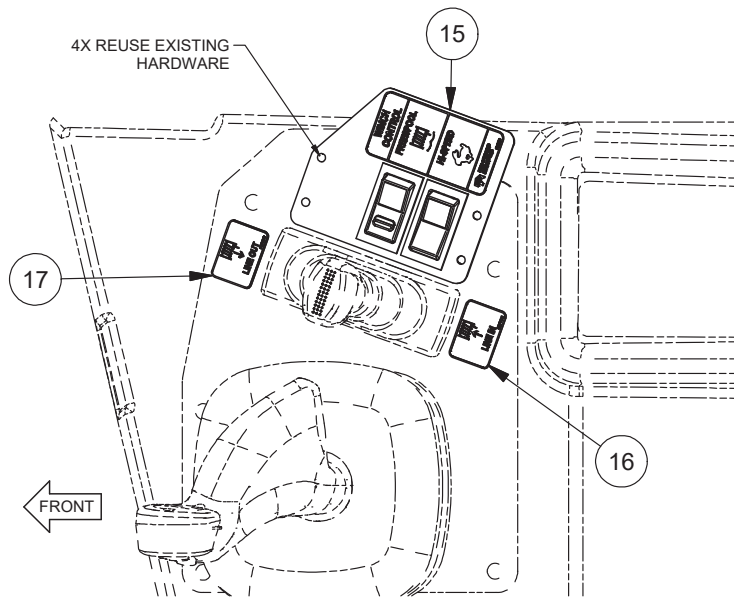


## Electrical Installation

John Deere 700K (H5CT1D\*\*E391)



**RIGHT CONSOLE ALTERATION**

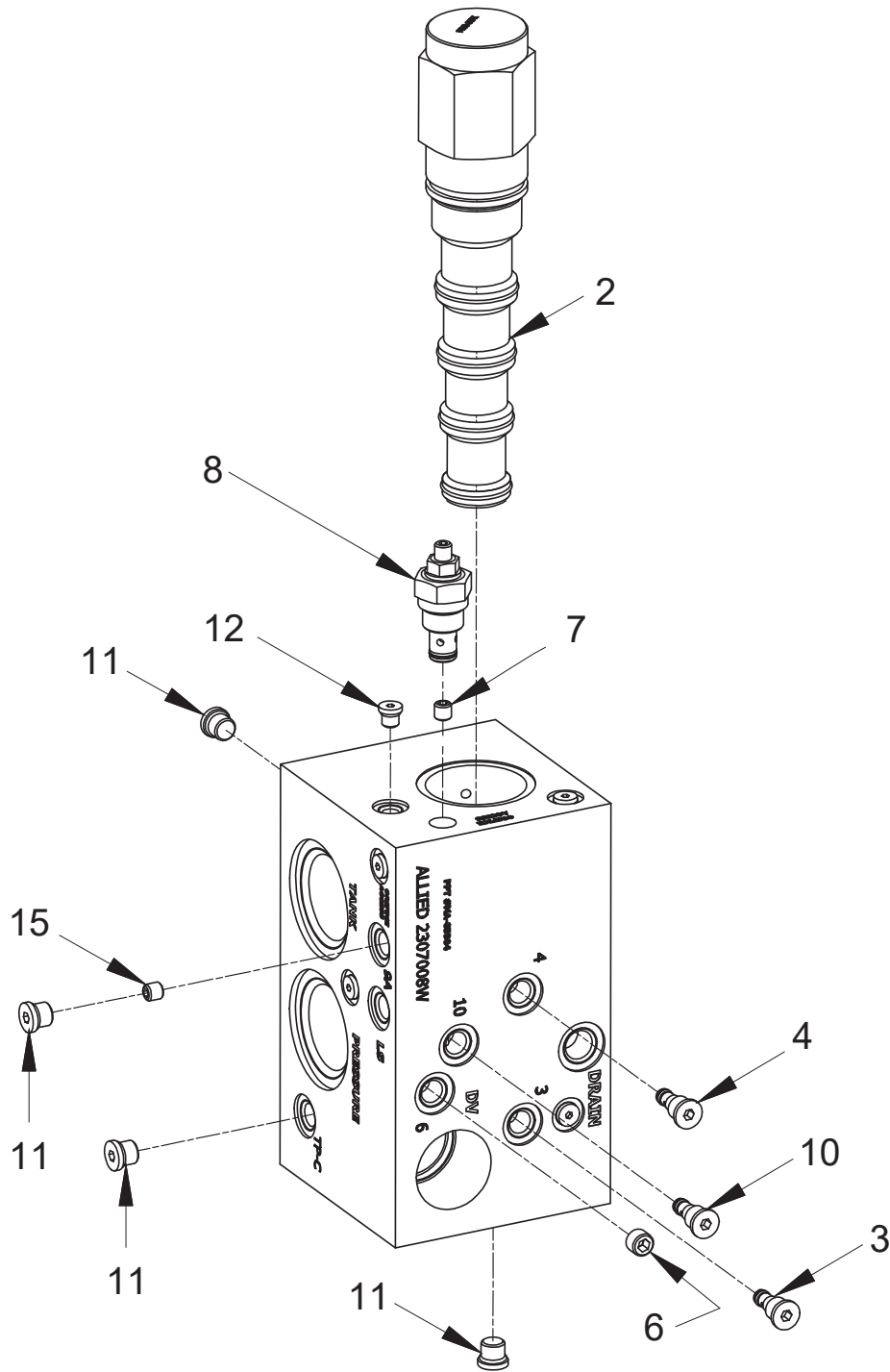


**CONTROLS INSTALLATION**

Item	Part No.	Qty	Description	Item	Part No.	Qty	Description
15	2315688	1	. Assy, Switch Panel (See p. 43)				
16	2307121W	1	. Decal, Winch In				
17	2307122W	1	. Decal, Winch Out				

# Directional Manifold Assembly

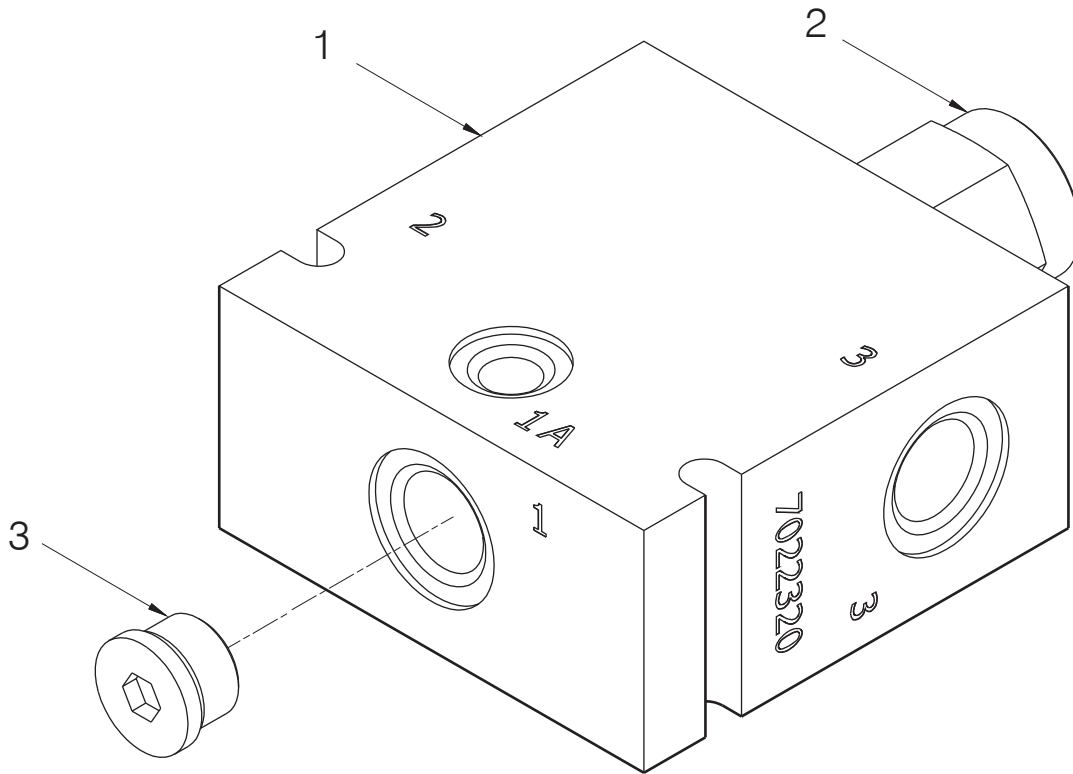
John Deere 750J (H5CH1E\*\*E48)



Item	Part No.	Qty	Description	Item	Part No.	Qty	Description
	<b>2307008W</b>		<b>Directional Manifold Assy</b>				
1	2307232W	1	. Manifold-Body	8	2307236W	1	. Valve, Cartridge Relief
2	2307024W	1	. Valve, Cartridge		2307246W	1	. . Seal Kit
	2307235W	1	. . Seal Kit	11	222442W	5	. Fitting
3	2307234W	3	. Check Valve	12	2310978	1	. Orifice
	2307245W	1	. . Seal Kit	15	2307736W	1	. Orifice
6	220998W	1	. Set Screw				
7	2307233W	1	. Plug				

## Bypass Manifold Assembly

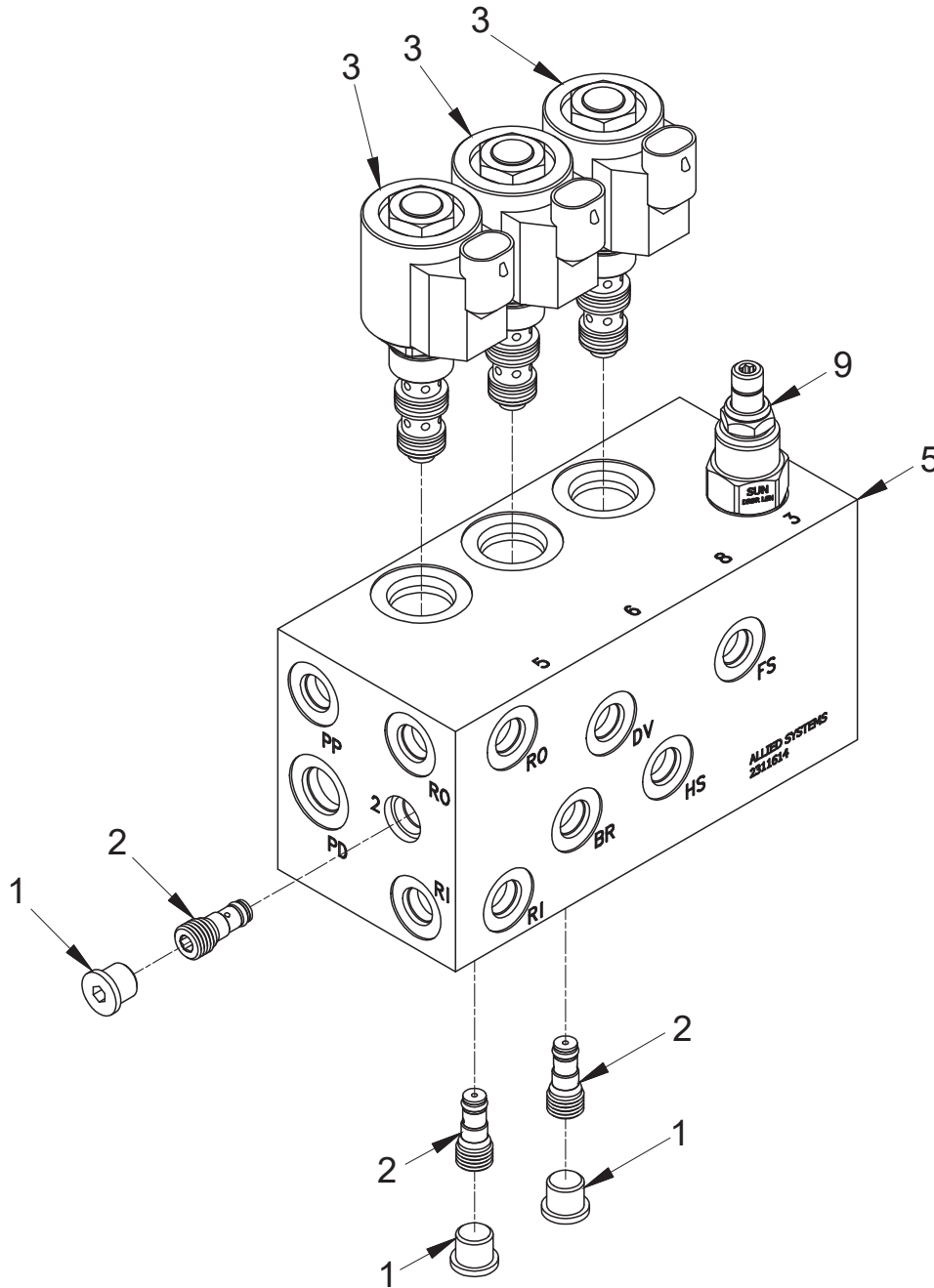
John Deere 750J (H5CH1E\*\*E48)



Item	Part No.	Qty	Description	Item	Part No.	Qty	Description
	<b>2307443W</b>		<b>Bypass Manifold</b>				
1	2307444W	1	. Manifold, Modified				
2	2310576	1	. Valve, Directional				
	2307154W	1	. . Seal Kit				
3	229345	1	. Fitting				

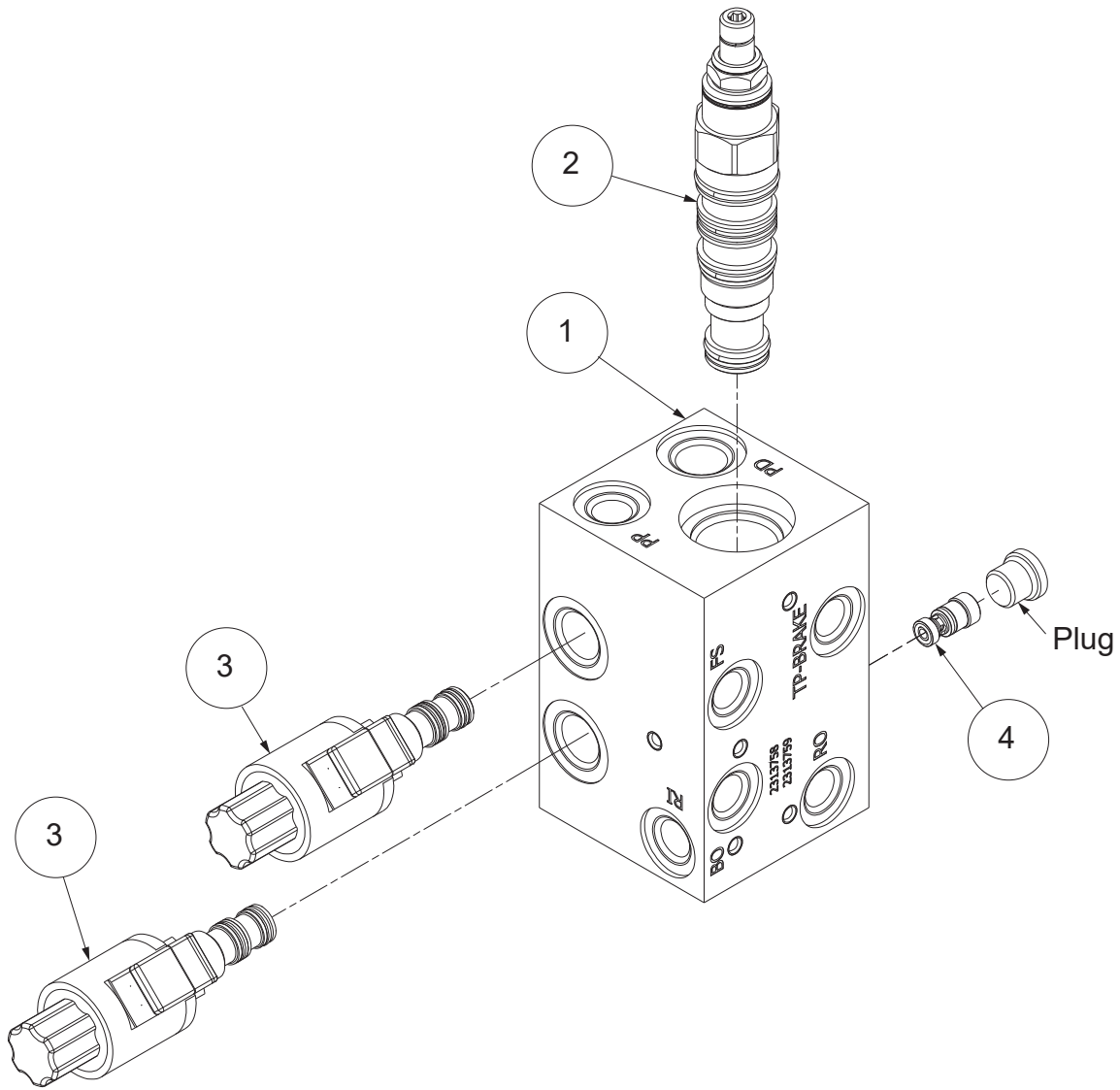
# Control Manifold Assembly

John Deere 750J (H5CH1E\*\*E48)



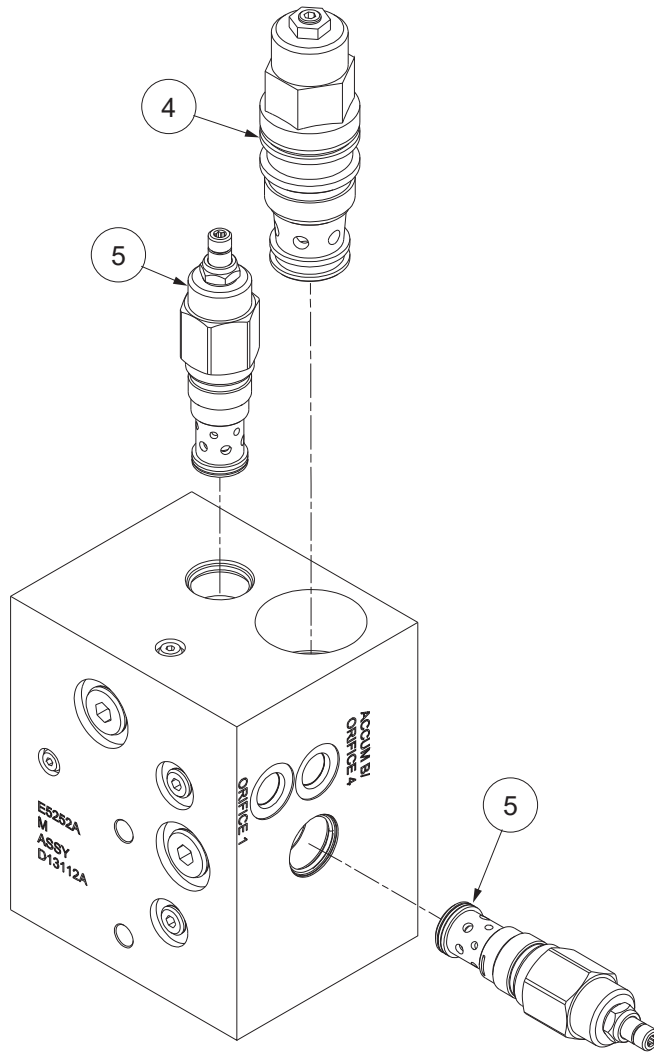
Item	Part No.	Qty	Description	Item	Part No.	Qty	Description
	<b>2311614</b>		<b>Control Manifold Assy</b>				
1	222442W	3	. Fitting	4	2311592	1	. Valve, Brake
2	2307227W	3	. Valve, Shuttle		252566	1	.. Seal Kit
	2307231W	1	.. Seal Kit	5	Ref.	1	. Manifold
3	2310430	3	. Valve, Cartridge	9	2311592	1	. Valve, Directional
	R15668	1	.. Seal Kit		252566	1	.. Seal Kit

# Control Manifold Assembly



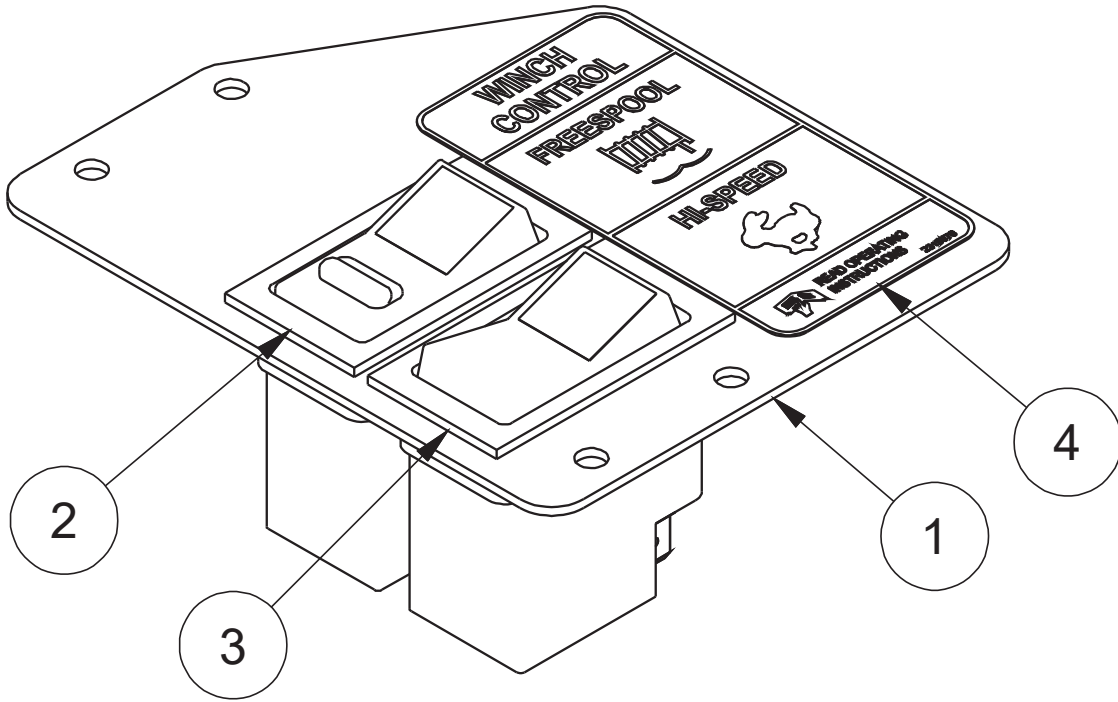
Item	Part No.	Qty	Description	Item	Part No.	Qty	Description
	<b>2313758</b>		<b>Control Manifold Assy</b>				
1	2313759	1	. Manifold, Body, Control	3	2312073	2	. Valve, Solenoid
2	2311592	1	. Valve, Brake		2312111	1	.. Seal Kit
	252566	1	.. Seal Kit	4	2312074	1	. Valve, Shuttle
					2312112	1	.. Seal Kit

## Counterbalance Manifold Assembly



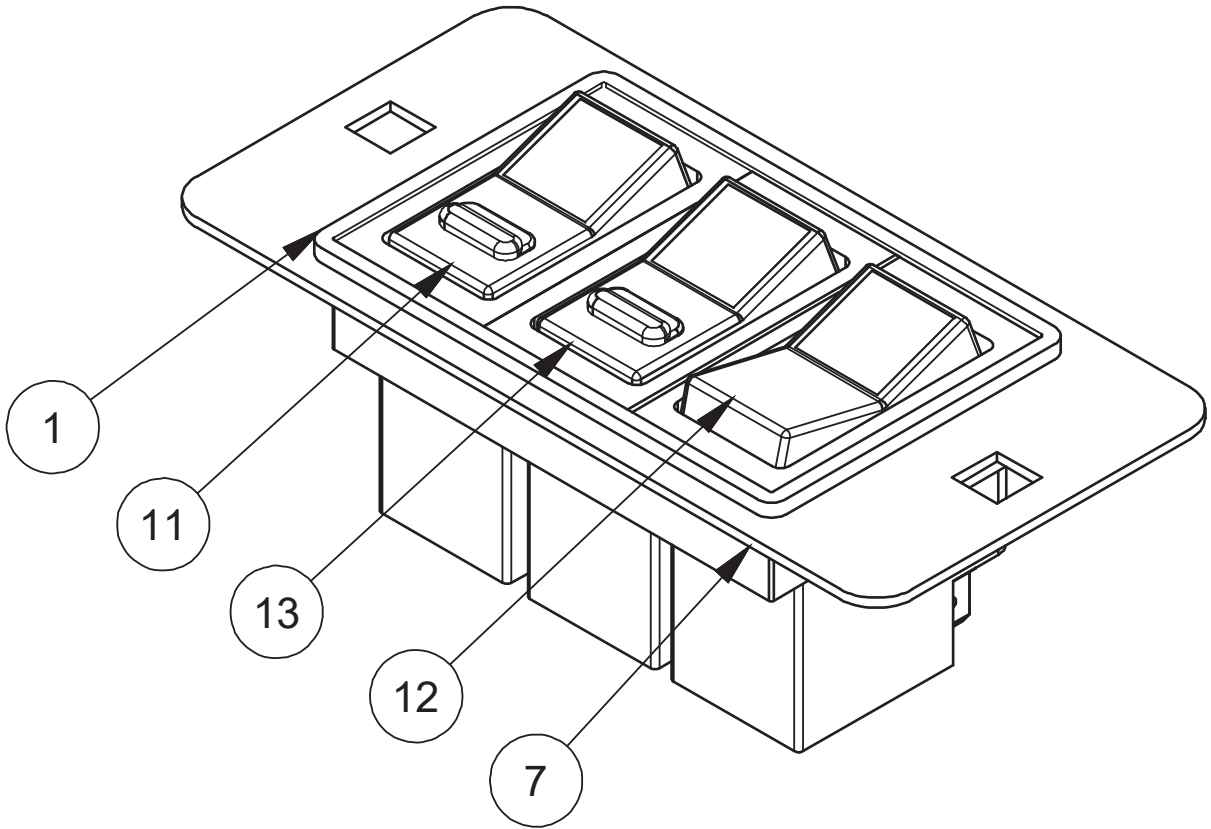
Item	Part No.	Qty	Description	Item	Part No.	Qty	Description
	<b>2314984</b>		<b>Counterbalance Manifold Assembly</b>				
4	2312068	1	. Counterbalance Valve				
	243815		. . Kit, Seal				
5	2307438W	2	. Relief Valve				
	259258	1	. . Seal Kit				

Switch Assembly



Item	Part No.	Qty	Description	Item	Part No.	Qty	Description
	<b>2315688</b>		<b>Assembly, Switch Panel</b>				
1	2315693	1	. Plate, Switch Mounting	3	2310502	1	. Switch Assembly, Green
2	2310013	1	. Switch Assembly, Yellow	4	2313676	1	. Decal, FS & Hi-Speed

Switch Assembly

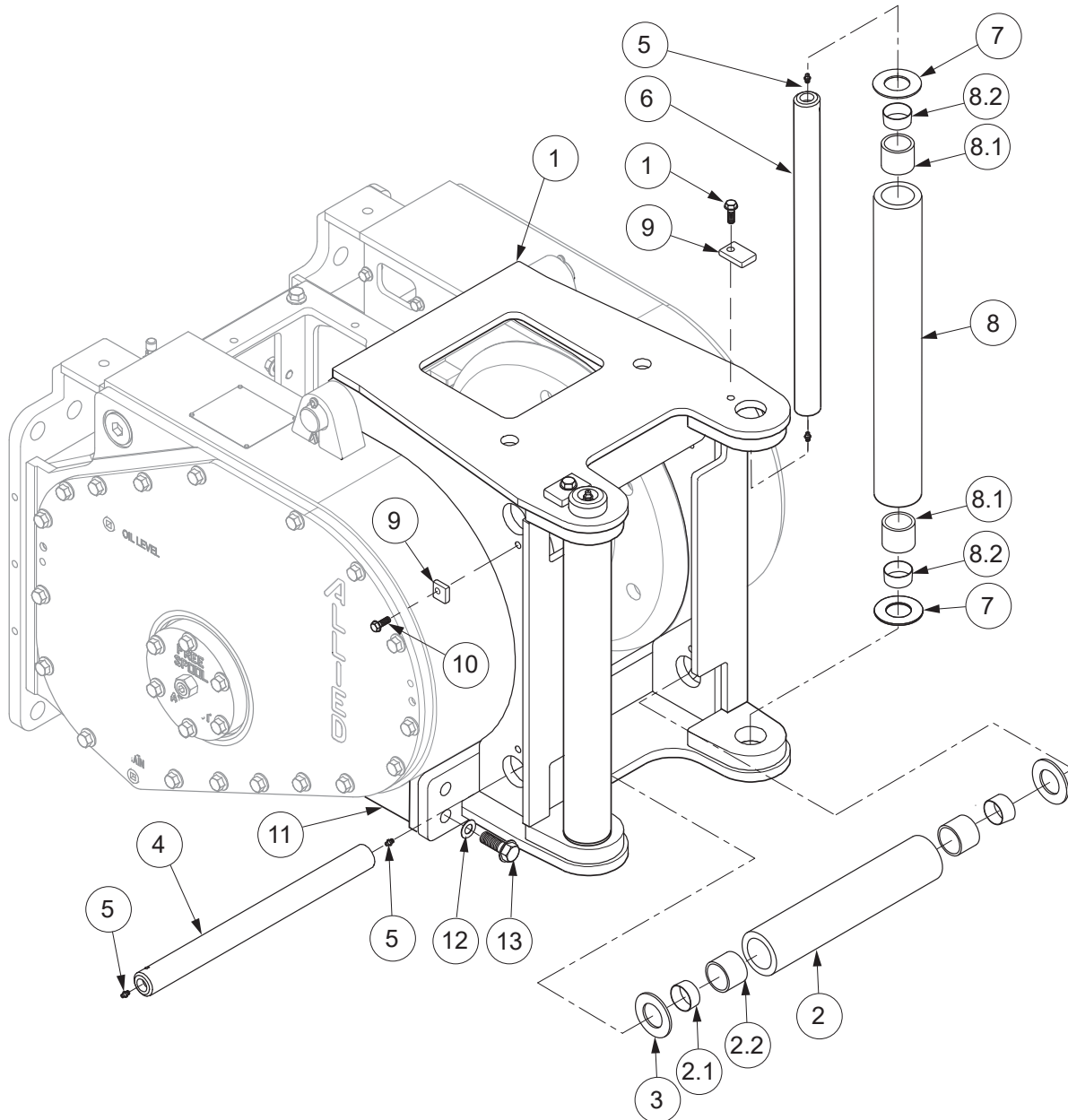


Item	Part No.	Qty	Description	Item	Part No.	Qty	Description
	<b>2307051W</b>		<b>Switch Panel Assembly</b>				
1	234740	1	. Frame, Mounting	11	2310013	1	. Switch Assy, Yellow
7	2307057W	1	. Mounting Plate, Switch	12	2310502	1	. Switch Assy, Green
				13	2310504	1	. Switch Assy, Red



**Section 4**  
**Optional Equipment**

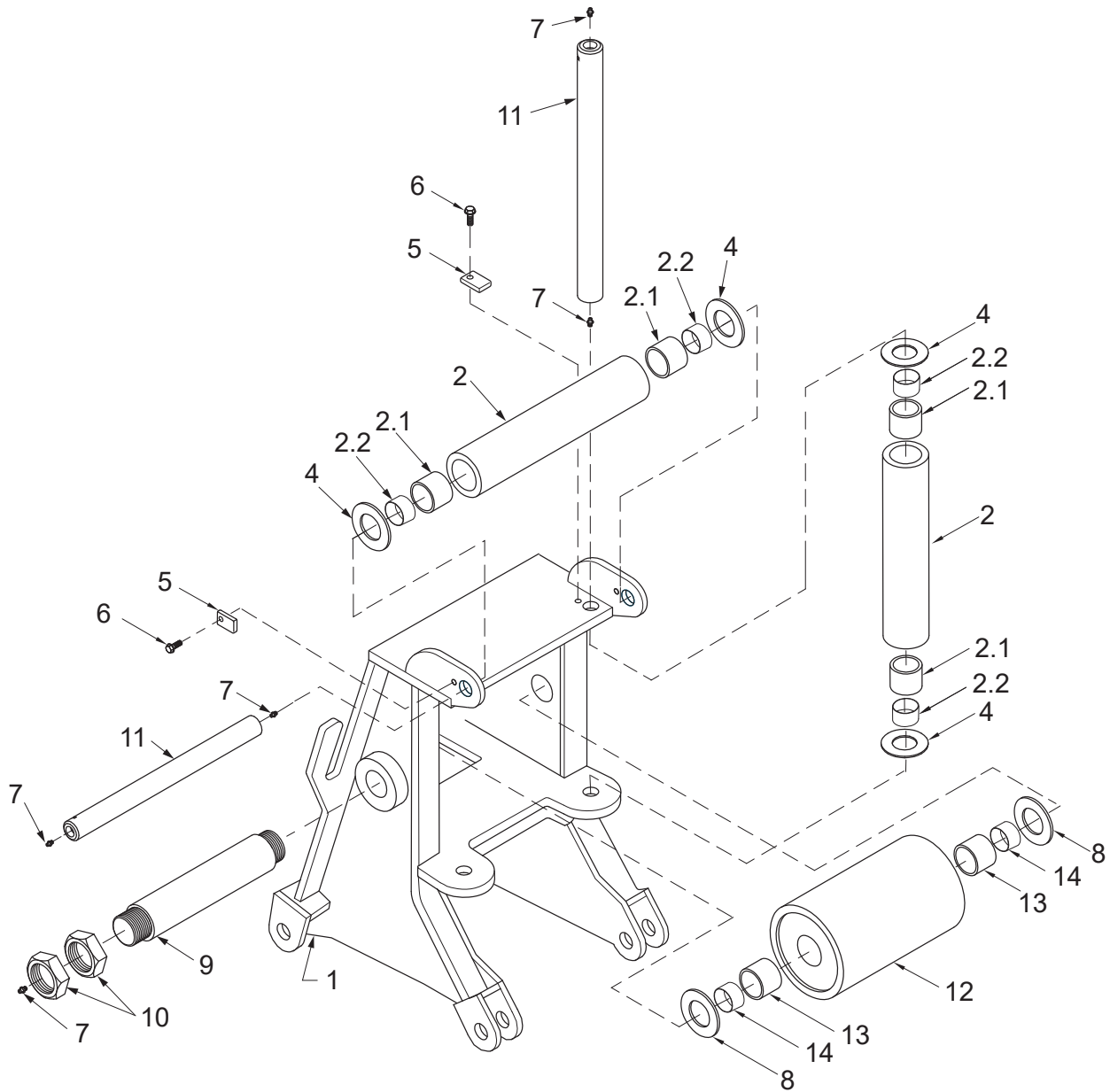
Fairlead



A = 3-Roller Fairlead  
 B = 4-Roller Fairlead

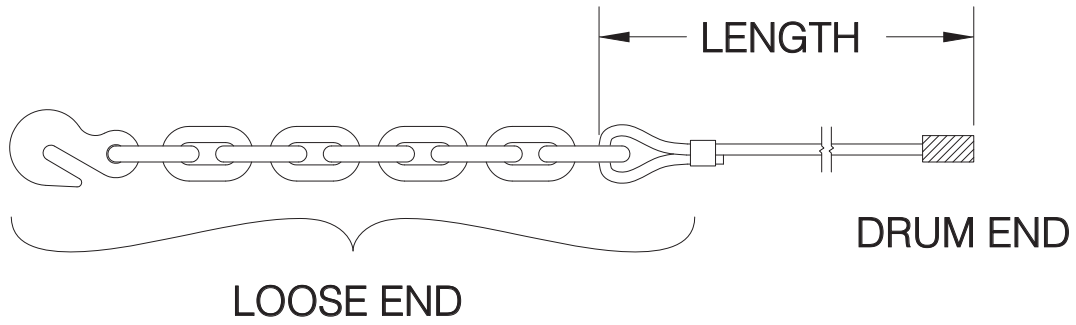
Item	Part No.	Qty A/B	Description	Item	Part No.	Qty A/B	Description
	<b>2307784W</b>	<b>1--</b>	<b>Fairlead, 3-Roller</b>	7	331767W	4/4	. Washer
	<b>2306335W</b>	<b>--1</b>	<b>Fairlead, 4-Roller</b>	8	2301907W	2/2	. Assy Roller
1	2306333W	1/1	. Frame	8.1	2301742W	2/2	. . Spacer
2	2301727W	1/2	. Assy Roller	8.2	35135W	2/2	. . Bushing
2.1	2570W	2/4	. . Bushing	9	2301706W	3/4	. Keeper
2.2	2301961W	2/4	. . Spacer	10	398817W	3/4	. Screw, Flange
3	33394W	2/2	. Washer	11	2306330W	2/2	Block, Mounting
4	2301722W	1/2	. Shaft	12	221777W	4/4	Washer
5	16001W	8/8	. Fitting, Lube	13	221657W	4/4	Capscrew
6	2306572W	2/2	. Shaft				

# Arch Assembly

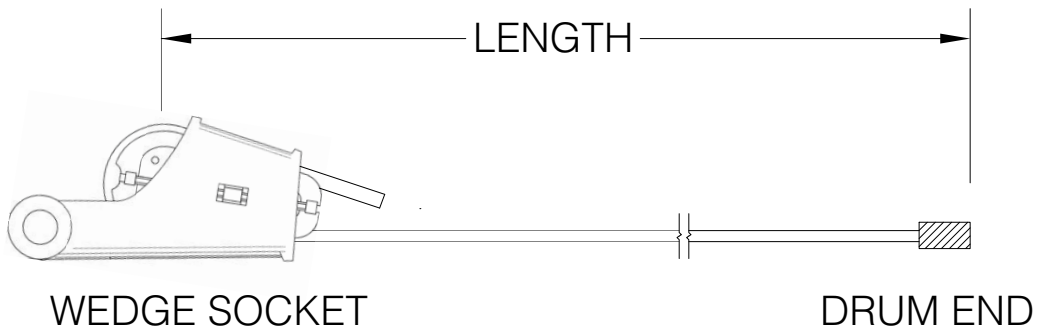


Item	Part No.	Qty	Description	Item	Part No.	Qty	Description
	<b>2301923W</b>		<b>Assy Arch</b>				
1	2301922W	1	. Arch	8	2821W	2	. Washer
2	2301910W	3	. Assy Roller	9	2302120W	1	. Shaft
2.1	2301742W	2	. . Spacer	10	221336W	4	. Nut
2.2	35135W	2	. . Bushing	11	2301919W	3	. Shaft
4	331767W	6	. Washer	12	2301925W	1	. Roller
5	2301706W	3	. Keeper	13	2301927W	2	. . Spacer
6	398817W	3	. Capscrew	14	2817W	2	. . Bushing
7	16001W	8	. Fitting, Lube				

**Wire Rope Assemblies**



**Figure A**



**Figure B**

	<b>Wire Rope</b>	<b>Tail Chain &amp; Hook</b>
<b>Wire Rope Diameter Dia (in)</b>	<b>Breaking Strength New (lbs)</b>	<b>Working Load Limit (lbs) 3.5:1 Design Factor</b>
5/8	41,200	13,000
3/4	58,800	34,200
7/8	79,600	34,200

**⚠ CAUTION**

**Do not use larger than 5/8" diameter wire rope if winch is equipped with arch assembly.**

Part No.	Wire Diameter	Length FT (M)	Part No.	Wire Diameter	Length FT (M)
WR5-279L	5/8"	279 (85) *c			
WR5-423L	5/8"	423 (129) *a			
WR6-197L	3/4"	197 (60) *c			
WR6-298L	3/4"	298 (91) *a			
WR7-142L	7/8"	142 (43) *c			
WR7-215L	7/8"	215 (66) *a			
YS7-215LWS	7/8"	215 (66) *b			

\*a WR Series Wire Rope (Illustrated in Figure A)  
 \*b YS Series Wire Rope (Illustrated in Figure B)  
 \*c Length to fill drum to 2/3 capacity (recommended)  
 \*d Length to fill drum to full capacity

**Section 5**  
**Recommended Service Parts, Intervals & Kits**

## Recommended Winch Service Intervals and Kits

Following the service schedule recommended here to help keep tractor winch downtime to a minimum, optimize winch operation, and extend the life of your

investment. See Table 1 for recommended service intervals, and Table 2 for recommended service kits.

Hydraulic Winch Maintenance					
Recommended Winch Service Intervals					
Hours or **	Months **	Filter ***	Winch Gear Oil	Brake & Clutch	Major Overhaul
First 250	1	Change			
Every 500	3	Change			
Every 2,000	12		Change		
Every 5,000				*Inspect	
Every 10,000					*Evaluate
Lube rollers and check oil level and filter light every week.					

\* Evaluate = Service based on average winch use;

If used more than once a day, perform an overhaul.

If used less than once a day, remove covers and check to determine need.

\* Inspect = Disassemble and inspect for wear.

\*\* Service winch using the tractor's hour meter or the length of time the winch is mounted to the tractor, whichever occurs first.

\*\*\* Follow tractor schedule if using tractor filter.

Table 1 Recommended Winch Service Intervals

Service Kits for H5C Winches			
Service Description	Kit Description	Winch Serial Number	Kit Part#
Filter change	Filter kit	All	Refer to dozer operator and service manuals
Complete oil change (every 1,000 hours)	N/A	All	Check our website for current operator's and service manuals for appropriate oils
Clutch and brake overhaul (every 5,000 hours)	Motor, reducer & brake assembly rebuild kit	All	2312857
Major overhaul (every 10,000 hours)	Intermediate/drum shaft & brake assembly rebuild kit	All	2311896

Table 2 Routine Maintenance Kits

## H5C Hydraulic Winch Recommended Service Parts

The following pages list some of the service parts and kits that are available for your Allied H5C Winch.

Page 57 includes lists of gaskets and seals. Keep these parts in stock at all times for regular maintenance. Order parts from the table based on your winch.

Page 57 and page 58 contain kits for 5,000 hour and 10,000 hour scheduled maintenance. Order these kits in preparation for these intervals. Each kit includes all parts listed in the table. Order parts from the table based on your winch.

Page 59 contains a list of wire rope assemblies. Order parts as required and as relevant for your installation. Page 59 also contains lists of operator controls components, and hose kits. Order parts or kits as required and as relevant for your installation.

Page 60 contains lists of tool kits and diagnostic tools, which are useful when you install, maintain and service your winches.

**Note: Allied Winch parts manuals are available for no charge download at <http://www.alliedsystems.com/pubs/pubs.htm>.**

Gaskets & Seals		Order as Required		
Allied P/N	Description	Quantity on Winch	See Parts Manual Page	Order Quantity
2307113W	Gasket, Hose Cover	1	Frames/Covers	
2307225W	Gasket, Hose Seal	1	Frames/Covers	
252566	Seal Kit, Control Manifold Assy (P/N 2313758)	1	Manifold Assembly	
252566	Seal Kit, Brake Valve (P/N 2311592)	1	Control Manifold Assembly	
2307235W	Seal Kit, Valve Cartridge (P/N 2307024W)	2	Manifold Assembly	
2307245W	Seal Kit, Check Valve (P/N 2307234W)	1	Manifold Assembly	
2307246W	Seal Kit, Cartridge Valve (P/N 2307236W)	2	Manifold Assembly	
2307154W	Seal Kit, Directional Valve (P/N 2310576)	1	Manifold Assembly	
2312111	Seal Kit, Solenoid Valve (P/N 2312073)	2	CBR Manifold Assembly	
2312112	Seal Kit, Shuttle Valve (P/N 2312074)	1	Manifold Assembly	
2307231W	Seal Kit, Shuttle Valve (P/N 2307227W)	1	Manifold Assembly	
243815	Seal Kit, Counterbalance Valve (P/N 2312068)	1	Manifold Assembly	
R15668	Seal Kit, Cartridge Valve (P/N 2310430)	1	Manifold Assembly	

### Motor, Reducer & Brake Assembly Rebuild Kit, P/N: 2312857

Service Interval: Every 5,000 Hours

Allied P/N	Description	Quantity in Kit	See Parts Manual Page	Order Quantity
<b>2312857</b>	<b>Kit, Motor, Reducer &amp; Brake Assy Rebuild</b>	<b>1</b>		
12916W	. Ring, Snap	2	Motor Shaft	
12944W	. Ring, Snap	1	Motor Shaft	
2306073W	. Seal, Rotary	2	Hydraulic Group	
89776W	. O-Ring	3	Hydraulic Group	
86596W	. O-Ring	1	Hydraulic Group	
87287W	. O-Ring	1	Motor Shaft	
334475W	. Ring, Snap	1	Motor Shaft	
12944W	. Ring, Snap	1	Motor Shaft	
246722	. Kit, Seal	1	Hydraulic Motor	



**Intermediate/Drum/Idler Shaft, Motor and Brake Assembly Rebuild Kit, P/N: 2311896**
**Service Interval: Every 10,000 hours**

Allied P/N	Description	Quantity in Kit	See Parts Manual Page	Order Quantity
<b>2311896</b>	<b>Kit, Intermediate, Idler, Drum Shaft, Motor &amp; Brake Assembly Rebuild</b>	<b>1</b>		
41207W	. Bearing, Ball	1	Motor Shaft	
41210W	. Bearing, Ball	1	Motor Shaft	
2306198W	. Disc, Friction	7	Motor Shaft	
2304874W	. Plate, Separator	8	Motor Shaft	
218214	. O-Ring	1	Intermediate Gear Shaft	
212380	. O-Ring	1	Intermediate Gear Shaft	
159940W	. O-Ring	1	Intermediate Gear Shaft	
2305923W	. Cone, Roller Bearing	1	Intermediate Gear Shaft	
45733W	. Cup, Roller Bearing	1	Intermediate Gear Shaft	
219114W	. Cone, Roller Bearing	1	Intermediate Gear Shaft	
2302515W	. Cup, Roller Bearing	1	Intermediate Gear Shaft	
133523W	. Seal, Oil	1	Drum Shaft	
339681W	. Seal, Oil	1	Drum Shaft	
219093W	. Cone, Roller Bearing	1	Drum Shaft	
219094W	. Cup, Roller Bearing	1	Drum Shaft	
12956W	. Ring, Snap	2	Drum Shaft	
219095W	. Bearing, Roller	1	Drum Shaft	
203533	. O-Ring	1	Drum Shaft	
2304580W	. Bearing, Cylinder Roller	1	Idler Shaft	
41207W	. Bearing, Ball	1	Idler Shaft	
12916W	. Ring, Snap	1	Idler Shaft	

Operator Controls Components		Order as Required	
Applies to: All			
Allied P/N	Description	Quantity on Winch	Order Quantity
2310013	Assy Switch (Yellow LED)	1	
2310504	Assy Switch (Red LED)	1	
2310506	Assy Switch (Red LED), Momentary	1	
2311072	Assy Switch (Green LED)	1	

Hose Kits		Order as Required	
Applies to: See "Relevant for Installation" Column			
Allied P/N	Description	Quantity on Winch	Order Quantity
2314767	Hose Kit, Winch Hydraulics	1	
2314768	Hose Kit, Winch Hydraulics	1	
2314769	Hose Kit, Winch Hydraulics	1	
2315051	Hose Kit, Winch Hydraulics	1	
2315054	Hose Kit, Winch Hydraulics	1	

Wire Rope Assemblies		Order as Required		
Allied P/N	Description	Length	Will Fill Drum To:	Order Quantity
WR5-279L	Wire Rope Assy 5/8" TC	279' (85 M)	2/3 Capacity (Recommended)	
WR5-423L	Wire Rope Assy 5/8" TC	423' (129 M)	Full Capacity	
YS5-279LWS	Wire Rope Assy 5/8" WS	279' (85 M)	2/3 Capacity (Recommended)	
YS5-423LWS	Wire Rope Assy 5/8" WS	423' (129 M)	Full Capacity	
WR6-197L	Wire Rope Assy 3/4" TC	197' (60 M)	2/3 Capacity (Recommended)	
WR6-298L	Wire Rope Assy 3/4" TC	298' (91 M)	Full Capacity	
YS6-197LWS	Wire Rope Assy 3/4" WS	197' (60 M)	2/3 Capacity (Recommended)	
YS6-298LWS	Wire Rope Assy 3/4" WS	298' (91 M)	Full Capacity	
WR8-142L	Wire Rope Assy 7/8" TC	142' (43 M)	2/3 Capacity (Recommended)	
WR7-215L	Wire Rope Assy 7/8" WS	215' (66 M)	Full Capacity	
YS7-142LWS	Wire Rope Assy 7/8" TC	142' (43 M)	2/3 Capacity (Recommended)	
YS7-215LWS	Wire Rope Assy 7/8" WS	215' (66 M)	Full Capacity	

TC = Tail chain and hook  
 WS = Wedge socket

**Tool Kits**

**Order these Tool Kits as required for installation, maintenance and service of your winch(es).**

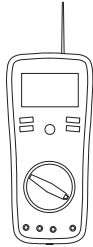
Allied P/N	Description	Order Quantity
588466	Socket Set, 3/8DR 3/8" to 7/8" STD/Deep, 22 PC	
588467	Socket Set, 1/2DR 3/8" to 1-1/4" STD/Deep, 30 PC	
588468	Socket Set, 3/4DR 7/8" to 2-3/8" STD, 29 PC	
588469	Wrench Set, 5/16" to 2-1/2", 31 PC	
588527	Hex Key Sets, .025" to 5/8", 18 PC	
588530	Socket Sets, 3/8DR 6mm-19mm 12 Point	
588529	Socket Sets, 1/2DR 10mm-26mm 12 Point	
588528	Wrench Sets, 7mm-24mm, 18 PC	
588526	Hex Key Sets, .07mm-17mm, 15 PC	

**Diagnostic Tools**

**Order as Required**

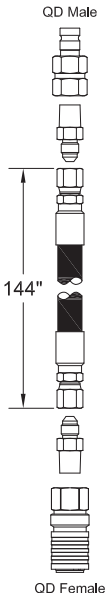
**Order these Tools as required for maintenance and service of your winch(es).**

Allied P/N	Description	Order Quantity
906601	0 to 8700 PSI Digital Pressure Gauge W/Female QD Connector	
69782	72" Hose Assembly W/QD Connectors Both Ends	
70381	144" Hose Assembly W/QD Connectors Both Ends	
69778	Multi-Meter, 12 Function	



**69778**  
Multi-Meter, 12 Function

AC/DC Voltage & Current,  
Resistance, Capacitance,  
Frequency, Type K & IR  
Temperature, Diode/Continuity,  
Duty Cycle Non-Contact  
InfraRed Thermometer  
CAT III Test Leads  
Type K Bead Wire Temp Probe

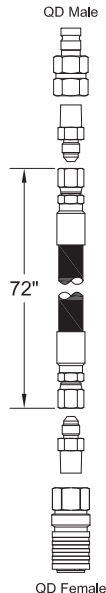


QD Male

144"

QD Female

**70381**  
Kit, Hose Assembly, W/QD Both Ends




QD Male

72"

QD Female

**69782**  
Kit, Hose Assembly, W/QD Both Ends



**906601**  
Kit, Digital Pressure Gauge  
W/ Female QD Connector  
0 to 8700 PSI

## Numerical Index

Part No.	Page	Item No.	Part No.	Page	Item No.	Part No.	Page	Item No.
11740	35	2.1	238064	24	8	2310430	40	3
24531	35	2.2	238065	23	9	2310502	43	3
203533	20	21	238065	24	9	2310502	44	12
209579	35	1.28	238067	23	11	2310504	44	13
225851	13	16	238067	24	11	2310576	39	2
225851	32	16	238068	23	14	2310978	38	12
225871	13	26	238068	24	14	2311329	8	3
225871	32	26	238070	23	16	2311330	8	5
229345	39	3	238070	24	16	2311412	21	
229383	35	1.22	238071	23	22	2311500	27	3.52
231439	22	21	238071	24	22	2311500	35	1.11
231439	27	3.3	238072	23	21	2311550	35	1.31
231439	35	1.18	238072	24	21	2311557	8	40
231440	27	3.2	238073	23	17	2311592	40	4
231440	35	1.17	238073	24	17	2311592	40	9
231441	27	3.11	238074	23	18	2311592	41	2
231443	36	18	238074	24	18	2311614	27	3.38
231444	35	1.15	238075	23	19	2311614	40	
231452	27	3.9	238075	24	19	2312068	42	4
231465	36	21	238076	23	20	2312073	41	3
231820	27	3.21	238076	24	20	2312074	41	4
231821	35	1.21	238077	23	13	2312111	41	
231822	35	1.2	238077	24	13	2312112	41	
231955	27	3.19	238078	23	23	2312197	35	1.6
231955	35	1.36	238078	24	24	2313153	27	3.28
231955	36	22	238080	23	25	2313443	35	1.4
232960	27	3.37	238080	24	23	2313639	35	1.37
232960	35	1.46	242443	36	25	2313663	35	1.32
232984	27	3.14	242587	36	27	2313676	43	4
234740	44	1	242629	27	3.12	2313758	35	1.2
236855	27	3.15	243178	35	1.41	2313758	41	
236855	35	1.19	243815	42		2313759	41	1
238056	23	2	252566	40		2314062	19	20.1
238056	24	3	252566	40		2314983	35	1.3
238058	23	5	252566	41		2314984	35	1.1
238058	24	5	257331	35	1.38	2314984	42	
238059	23	12	259258	42		2314986	35	1.7
238059	24	12	2310013	43	2	2315003	35	1.35
238060	23	1	2310013	44	11	2315374	35	1.39
238060	24	1	2310276	13	21	2315375	35	1.4
238061	23	4	2310276	32	21	2315687	35	1.42
238061	24	2	2310278	13	7	2315688	16	15
238062	23	6	2310278	32	7	2315688	37	15
238062	24	6	2310314	13	34	2315688	43	
238063	23	7	2310314	32	34	2315689	36	23
238063	24	7	2310315	13	33	2315693	43	1
238064	23	8	2310315	32	33	2315694	36	24

Part No.	Page	Item No.	Part No.	Page	Item No.	Part No.	Page	Item No.
2315695	35	1.43	18586W	16	11	2301919W	47	11
2315696	35	1.44	18588W	19	23.5	2301922W	47	1
2316646	35	1.5	18672W	13	18	2301923W	47	
12916W	19	20.12	18672W	32	18	2301925W	47	12
12916W	21	6	188210W	11	30.6	2301927W	47	13
12944W	19	20.18	188210W	15	30.6	2301961W	46	2.2
129563W	13	27	219066W	21	4	2302120W	47	9
129563W	32	27	219084W	19	20.17	2302333W	20	13
12956W	20	18	219093W	20	15	2302334W	20	20
1300780W	20	3	219094W	20	16	2302335W	20	14
1314503W	20	2	219095W	20	19	2302336W	20	11
1314566W	13	24	219114W	22	11	2302338W	20	22
1314566W	32	24	220000W	13	9	2302379W	20	17
1314656W	11	15.2	220000W	32	9	2302513W	15	33.2
1314656W	15	15.2	220998W	38	6	2302515W	22	12
1321665W	8	2	221336W	47	10	2302624W	22	6
133523W	20	10	221657W	46	13	2302625W	22	17
15113W	13	6	221692W	13	20	2302923W	13	11
15113W	32	6	221692W	32	20	2302923W	32	11
15127W	13	5	221711W	13	23	2302924W	13	12
15127W	27	3.47	221711W	32	23	2302924W	32	12
15127W	32	5	221717W	22	13	2302925W	13	13
15157W	27	2.4	221720W	16	6	2302925W	32	13
15158W	19	23.4	221763W	35	1.26	2302926W	13	14
15158W	20	5	221771W	13	35	2302926W	32	14
15256W	11	15.4	221771W	16	12	2303221W	11	15.1
15256W	15	15.4	221771W	32	35	2303221W	15	15.1
15290W	11	30.17	221775W	20	8	2303256W	20	4
15290W	15	30.17	221777W	46	12	2303257W	20	1
15315W	11	30.16	221780W	13	19	2303730W	16	1
15315W	15	30.16	221780W	16	5	2303731W	16	2
159940W	22	7	221780W	32	19	2303732W	16	3
16001W	46	5	222442W	38	11	2303848W	11	30.2
16001W	47	7	222442W	40	1	2303848W	15	30.2
16151W	11	30.5	224108W	22	23	2303902W	20	7
16151W	15	30.5	224120W	35	1.25	2303906W	22	2
16243W	11	30.12	225050W	22	15	2303907W	22	5
16243W	15	30.12	230064W	16	7	2303908W	22	16
16243W	15	31.2	2300842W	21	2	2304101W	11	30.4
16243W	15	33.4	2301706W	46	9	2304101W	15	30.4
16602W	8	4	2301706W	47	5	2304147W	35	1.13
16830W	20	6	2301722W	46	4	2304580W	21	3
17384W	13	15	2301727W	46	2	2304611W	16	10
17384W	32	15	2301742W	46	8.1	2304612W	16	13
176208W	11	30.3	2301742W	47	2.1	2304613W	16	14
176208W	15	30.3	2301907W	46	8	2304803W	22	14
18475W	27	3.46	2301910W	47	2	2304874W	19	20.21

Part No.	Page	Item No.	Part No.	Page	Item No.	Part No.	Page	Item No.
2305415W	22	18	2307061W	27	3.6	2307432W	27	2.5
2305715W	13	36	2307081W	22	20	2307438W	42	5
2305715W	32	36	2307097W	11	44.1	2307443W	27	3.8
2305915W	22	10	2307097W	15	31.1	2307443W	39	
2305923W	22	8	2307103W	13	8	2307444W	39	1
2306073W	19	20.14	2307103W	32	8	2307446W	27	3.44
2306077W	19	20.1	2307111W	11	34.3	2307456W	27	3.22
2306078W	19	20.2	2307112W	11	34.4	2307470W	27	3.24
2306151W	35	1.48	2307113W	11	34.6	2307471W	27	3.25
2306152W	35	1.47	2307121W	13	2	2307472W	27	3.32
2306189W	11	5.1	2307121W	32	2	2307482W	27	3.45
2306189W	15	5.1	2307121W	37	16	2307532W	13	32
2306198W	19	20.2	2307122W	13	3	2307532W	32	32
2306214W	19	23.1	2307122W	32	3	2307613W	27	3.43
2306228W	19	21.1	2307122W	37	17	2307625W	27	3.53
2306229W	21	7	2307123W	27	3.4	2307625W	35	1.9
2306330W	46	11	2307123W	35	1.12	2307694W	24	
2306333W	46	1	2307154W	39		2307736W	38	15
2306335W	46		2307206W	27	3.31	2307784W	46	
2306494W	19	24.3	2307213W	27	3.33	2307962W	23	15
2306570W	11	30.1	2307225W	11	34.7	2307962W	24	15
2306570W	15	30.1	2307226W	11	34.8	2570W	46	2.1
2306572W	46	6	2307227W	40	2	264159W	11	30.9
2306599W	19	20.4	2307231W	40		264159W	15	30.9
2306604W	19	20.5	2307232W	38	1	2817W	47	14
230687W	16	4	2307233W	38	7	2821W	47	8
2306938W	19	25.1	2307234W	38	3	293628W	35	1.23
2306938W	23		2307235W	38		293732W	16	8
2306938W	27	1.1	2307236W	38	8	296420W	35	1.24
2306994W	11	34.9	2307245W	38		296434W	16	9
2307008W	27	3.5	2307246W	38		313022W	19	20.25
2307008W	38		2307257W	11	34.2	318702W	13	17
2307024W	38	2	2307261W	11	34.1	318702W	16	28
2307032W	27	3.3	2307265W	27	3.7	318702W	32	17
2307033W	27	3.27	2307274W	13	30	318702W	36	28
2307036W	27	3.29	2307274W	32	30	331767W	46	7
2307037W	22	22	2307282W	21	1	331767W	47	4
2307038W	27	3.42	2307283W	27	3.23	33394W	46	3
2307039W	27	3.26	2307289W	24		334442W	19	20.19
2307040W	27	3.34	2307291W	27	3.2	334475W	19	20.16
2307042W	27	3.41	2307291W	35	1.8	339681W	20	12
2307051W	13	4	2307292W	13	10	35135W	46	8.2
2307051W	32	4	2307292W	32	10	35135W	47	2.2
2307051W	44		2307293W	27	3.49	398567W	11	30.7
2307054W	13	1	2307342W	15	33.1	398567W	11	34.5
2307054W	32	1	2307344W	27	3.5	398567W	15	30.7
2307057W	44	7	2307398W	27	3.13	398567W	27	3.35

Part No.	Page	Item No.	Part No.	Page	Item No.	Part No.	Page	Item No.
398567W	35	1.27	R13807642	35	1.34			
398817W	11	30.8	R13811059	27	2.6			
398817W	11	43.1	R14040	35	1.1			
398817W	15	30.8	R15668	40				
398817W	15	33.3	R2528352	27	3.48			
398817W	35	1.33	R525293	19	20.29			
398817W	46	10	R833127	35	1.14			
398817W	47	6	R833133	27	3.4			
398820W	13	22	R833200	27	3.17			
398820W	19	20.23	R833251	19	20.28			
398820W	32	22	R833251	27	3.1			
398828W	19	23.3	R833251	35	1.16			
41207W	19	20.13	R833257	27	3.18			
41207W	21	5	R833261	36	19			
41210W	19	20.11	R833400	27	3.16			
45733W	22	9	R833802	27	3.1			
61056W	22	3	R834052	36	20			
61142W	22	1	R834201	27	3.36			
86596W	19	20.8	R834201	35	1.45			
87287W	19	20.9	WR5-279L	48				
89776W	19	20.6	WR5-423L	48				
917373W	19	23.6	WR6-197L	48				
93927W	11	15.3	WR6-298L	48				
93927W	15	15.3	WR7-142L	48				
NA	19	20.22	WR7-215L	48				
NSS	23	24	Y09G-0616	22	4			
R12577880	13	29	Y09G-0616	27	3.39			
R12577880	32	29	Y17C-1024	20	9			
R12577882	13	28	Y73G-0816	19	20.3			
R12577882	32	28	Y73G-0840	19	20.15			
R13661	13	31	YS7-215LWS	48				
R13661	32	31						





To find a dealer in your area,  
Call: (503) 625-2560,  
Fax: (503) 625-7269, or  
Email: [marketing@alliedsystems.com](mailto:marketing@alliedsystems.com), or  
Visit our website: <http://www.alliedsystems.com>

599029W-JD Rev. 11/2019 Printed in U.S.A.

The logo for Allied Systems Company, featuring the words "Allied Systems" in a bold, italicized font above the word "COMPANY" in a smaller, all-caps font. A horizontal line is positioned below the words "Allied Systems".

**Allied Systems**  
COMPANY