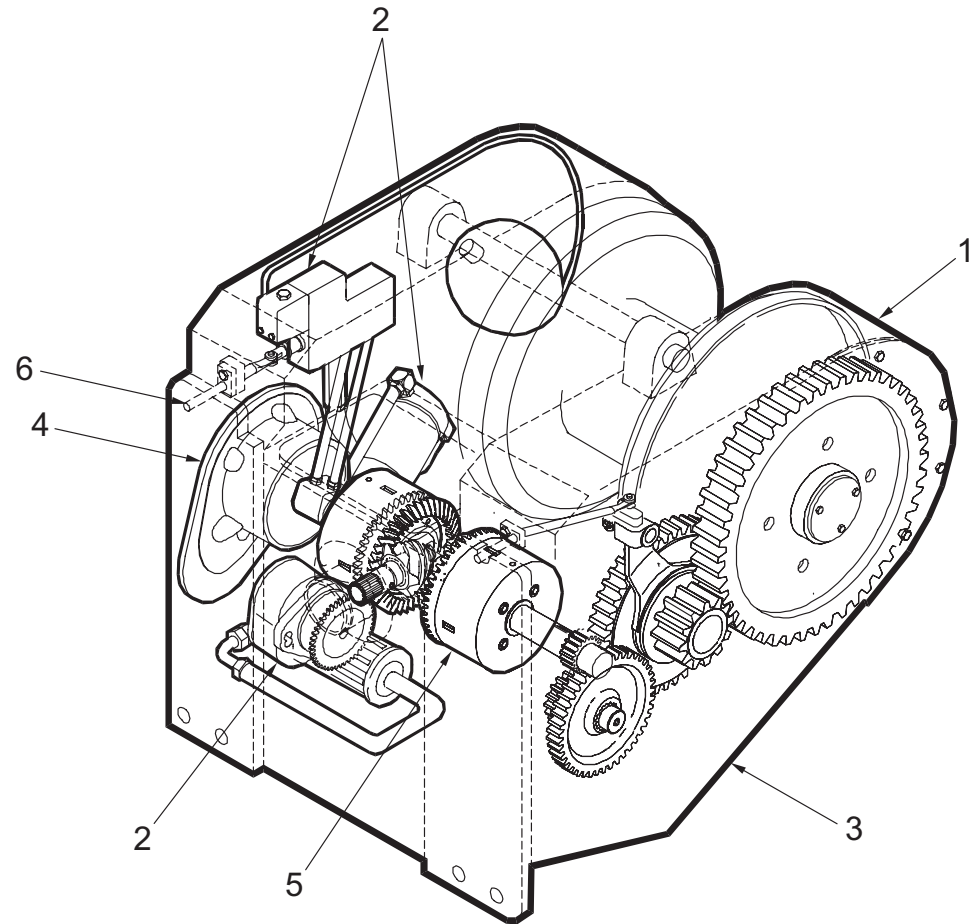




# ALLIED WINCHES FOR: CASE DOZERS

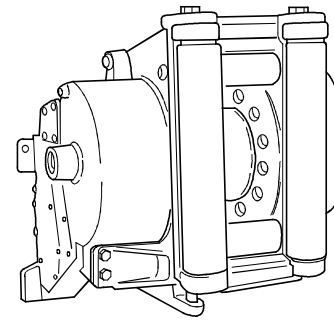


W5C shown. (Other models have similar features.)

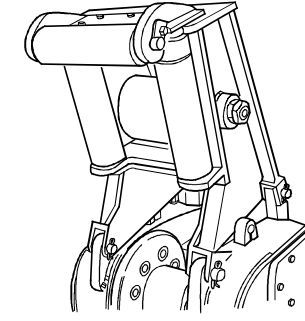
## Features

- 1. FLUSH DRUM**  
Drum flush with frame to reduce line wear from side pulls.
- 2. SELF CONTAINED HYDRAULICS (SCH)**  
Valve, pump, filter and hydraulic lines are inside winch for long component life and simplified winch installation.
- 3. HEAVY DUTY FRAME**  
Protects, and allows easy access to internal components.
- 4. OIL BRAKE**  
Spring applied, multiple-disc hydraulically released and oil cooled for long life. No heat fade. Eliminates routine adjustments.
- 5. MULTI-DISC CLUTCH**  
Hydraulically applied clutch is automatically synchronized with the oil brake for smooth winch line control.
- 6. SINGLE LEVER CONTROL**  
Connected to single spool control valve for excellent line control regardless of application.

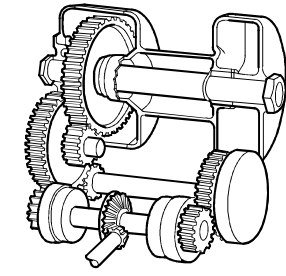
## Options



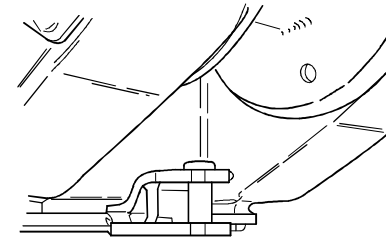
**FAIRLEAD**  
Permits maximum line pull from all angles.



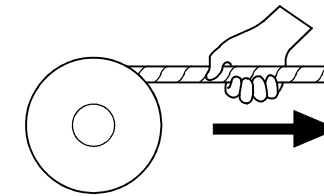
**ARCH**  
Permits maximum line pull from angles and lifts load off ground for ease of skidding.



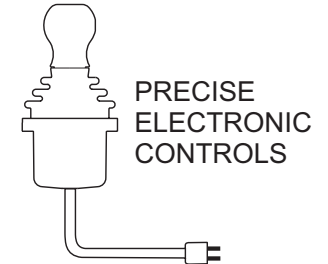
**SLOW GEAR RATIO**  
For precise line speed control and increased line pull capacity.



**DRAWBAR**  
For pulling. Optional on W3C. Standard on W5C, W6G, W8L and W12E.



**FREESPOOL**  
Disconnects drum from gearing drag to allow cable to be easily pulled out by hand. Standard on W3C, W5C and W6G. Optional on W8L.



**PRECISE ELECTRONIC CONTROLS**  
**ELECTRONIC CONTROLS**  
Simplified winch installation: only one wire harness needed to connect to control joystick. Provides unparallelled line speed control.

## Parts and Service Support

Our parts depot carries a large parts inventory to support your dealer. Orders are generally filled within 24 hours from our depot to the dealer. Contact your tractor dealer for your winch parts and service.

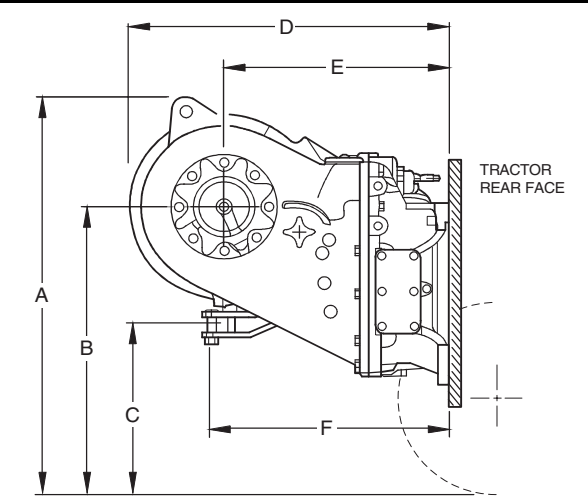
**Allied Systems**  
COMPANY

### WINCH DIVISION

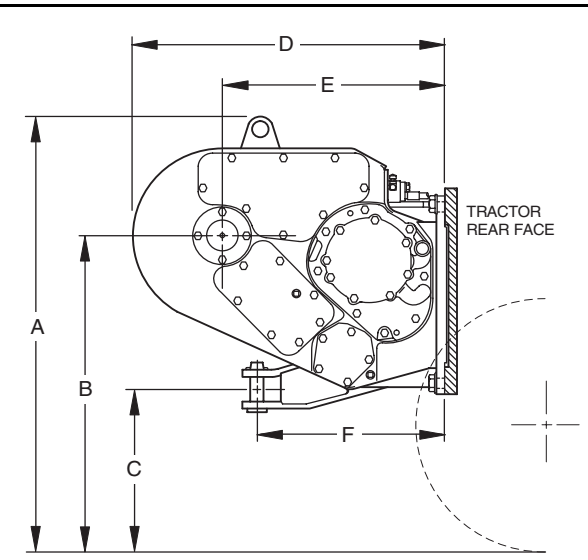
2300 OREGON STREET  
SHERWOOD, OREGON 97140-9799, U.S.A.  
TELEPHONE: (503) 625-2560  
FAX: (503) 625-7269 • (503) 625-5132  
E-MAIL: [marketing@alliedsystems.com](mailto:marketing@alliedsystems.com)  
<http://www.alliedsystems.com>

# ALLIED WINCHES FOR CASE DOZERS

1	<b>DOZER MODEL</b>		550H	650H	650K	750H	750K		850H	850K	1150H	1150H	1650K	1850K	1		
2	<b>WINCH MODEL</b>		W3C	W3C	W3C	W3C	W3C		W3C	W3C	Hi-range W5C	Lo-range W5C	W5C	W6G	2		
3	<b>STANDARD GEAR RATIOS</b>		39/1	39/1	61/1	39/1	61/1		39/1	61/1	63/1	63/1	35/1	45/1	3		
4	S T A N D	BARE DRUM	<b>Maximum Line Pull (pounds)*</b>		51200	51200	34800	51200	40300		51200	41800	69200	69200	66900	89800	4
5			Line Speed @	96 fpm	106 fpm	88 fpm	109 fpm	88 fpm		105 fpm	89 fpm	84 fpm	63 fpm	126 fpm	135 fpm	5	
6			Typical Working Load of (pounds)	10000	10000	10000	10000	10000		10000	10000	20000	20000	20000	30000	6	
7	D A R D	FULL DRUM	<b>Maximum Line Speed</b>		105 fpm	110 fpm	91 fpm	110 fpm	91 fpm		112 fpm	91 fpm	90 fpm	65 fpm	165 fpm	138 fpm	7
8			Maximum Line Pull (pounds)*	29800	34200	18900	32400	23100		35900	24000	60900	69200	36000	60200	8	
9			Line Speed @	146 fpm	159 fpm	149 fpm	159 fpm	149 fpm		165 fpm	151 fpm	100 fpm	72 fpm	140 fpm	135 fpm	9	
10	R D	DRUM	Typical Working Load of (pounds)		10000	10000	10000	10000	10000		10000	10000	20000	20000	20000	30000	10
11			Maximum Line Speed	183 fpm	190 fpm	158 fpm	190 fpm	158 fpm		195 fpm	158 fpm	193 fpm	140 fpm	306 fpm	256 fpm	11	
12																12	

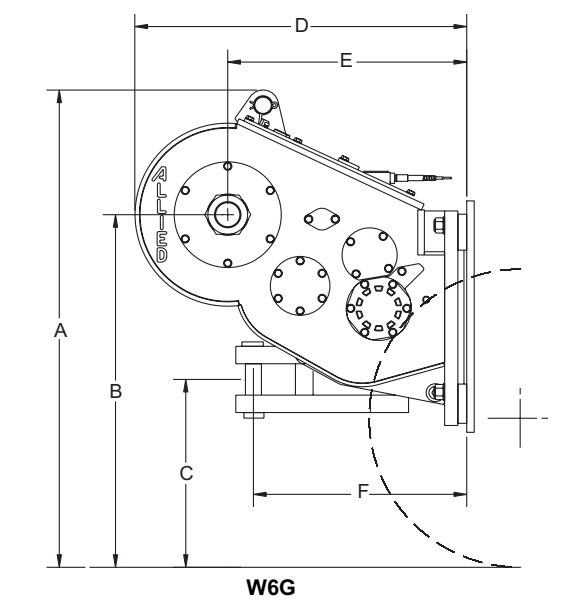


13	O P T I O N A L	MAXIMUM LINE SPEED BARE DRUM @ THIS GEAR RATIO (Shaded ratios not available for this model)	35/1								191 fpm	138 fpm			13		
14			56/1												111 fpm	14	
15			61/1	69 fpm	75 fpm		75 fpm			75 fpm							15
16			66/1												88 fpm		16
17			83/1													75 fpm	17
18			95/1										66 fpm	48 fpm			18
19			100/1												58 fpm		19
20	103/1													60 fpm	20		
21	153/1													41 fpm	21		



22	<b>DIMENSIONAL DATA</b> (See illustrations)	A	Ground to highest point	43 in.	43 in.	42 in.	43 in.	42 in.		44 in.	42 in.	49 in.	49 in.	48 in.	57 in.	22
23		B	Ground to drum center	32 in.	32 in.	31 in.	32 in.	31 in.		33 in.	31 in.	36 in.	36 in.	35 in.	43 in.	23
24		C	Ground to drawbar center	16 in.	16 in.	15 in.	16 in.	15 in.		17 in.	15 in.	20 in.	20 in.	19 in.	24 in.	24
25		D	Dozer face to end of winch	36 in.	36 in.	36 in.	36 in.	36 in.		36 in.	36 in.	35 in.	35 in.	36 in.	40 in.	25
26		E	Dozer face to drum center	27 in.	27 in.	27 in.	27 in.	27 in.		27 in.	27 in.	26 in.	26 in.	27 in.	29 in.	26
27		F	Dozer face to drawbar center	28 in.	28 in.	28 in.	28 in.	28 in.		28 in.	28 in.	22 in.	22 in.	23 in.	27 in.	27
28		G	Winch widest width (not shown)	28 in.	28 in.	28 in.	28 in.	28 in.		28 in.	28 in.	32 in.	32 in.	32 in.	38 in.	28

29	<b>WEIGHTS</b>	Winch, approx. w/o cable	1500 lbs.	1500 lbs.	1530 lbs.	1500 lbs.	1530 lbs.		1500 lbs.	1530 lbs.	2100 lbs.	2100 lbs.	1950 lbs.	2900 lbs	29
30		Fairlead	310 lbs.	310 lbs.	310 lbs.	310 lbs.	310 lbs.		310 lbs.	310 lbs.	400 lbs.	400 lbs.	400 lbs	750 lbs	30
31		Drawbar	55 lbs.	55 lbs.	55 lbs.	55 lbs.	55 lbs.		55 lbs.	55 lbs.	w/winch	w/winch	w/winch	w/winch	31
32		Integral Arch	420 lbs.	420 lbs.	420 lbs.	420 lbs.	420 lbs.		420 lbs.	420 lbs.	875 lbs.	875 lbs.	875 lbs.	1015 lbs	32



<b>CABLE CAPACITY</b>														
33	<b>WINCH CABLE CAPACITY</b> (Shaded options unavailable) (Cable capacity of drum is based on SAE J1158 Jan 85)	<b>Winch Model</b>	Barrel Diameter	CABLE DIAMETER					FERRULE			* Maximum line pull is the lesser of the maximum line pull that the dozer will develop with the standard gear ratio or the breaking strength for the maximum recommended cable for that winch model.	33	
34					1/2 in.	5/8 in.	3/4 in.	7/8 in.	1 in.	Name	Length		Diameter	34
35				<b>W3C</b>	8.00 in.	354 ft.	232 ft.	164 ft.		Bantam	2 in.		1 1/2 in.	35
36				<b>W5C</b>	8.56 in.		423 ft.	298 ft.	215 ft.	Light	2 1/4 in.		2 in.	36
37		<b>W6G</b>	10.00 in.			399 ft.	287 ft.	223 ft.	Light	2 1/4 in.	2 in.	37		
38														38
39														39
40														40

41 **Notes:**

42

43

44

45 Allied Systems Company reserves the right to change and/or improve specifications and performance at its own discretion without prior notice. Check with dealer for latest data.