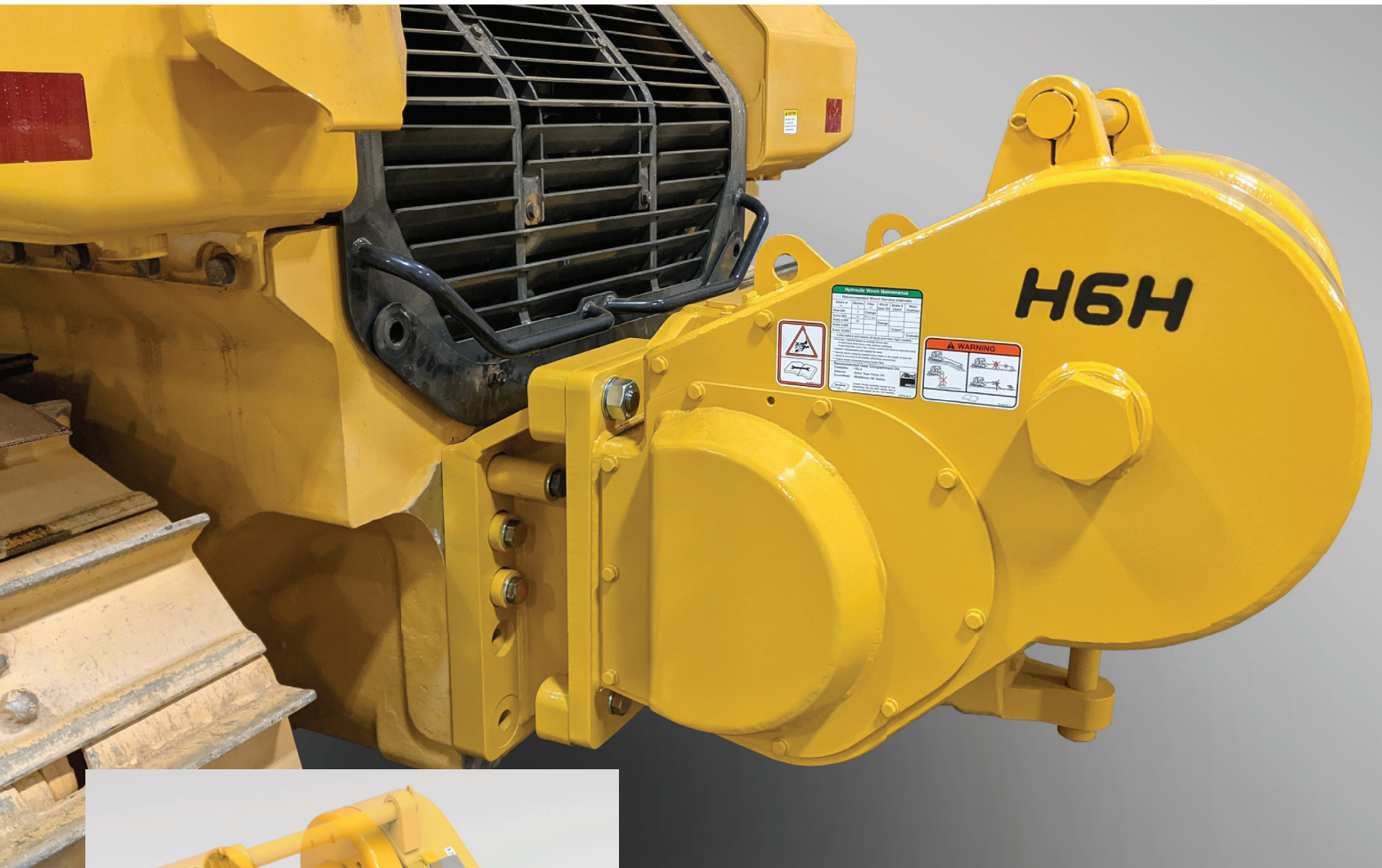


H6H

for Komatsu D61/D65/D71



Allied Partners with Komatsu to Ensure Seamless Integration with the D61, D65 and D71 Dozers.



- Easy "Plug & Play" installation saves you time and money.
- Motor turns only on demand. Less wear and tear, quiet operation.
- Finger tip precision control. Line speeds as fine as 0.5 ft/min.
- Generous angle of departure to allow dozer to drive uphill without the winch frame scraping the ground.
- Optional attachments available for your specific needs: 4 roller fairlead, drawbar, extended drawbar, adjustable integral logging arch, and various wire rope assemblies.

503.625.2560
marketing@alliedsystems.com
www.alliedsystems.com/winch


MADE IN USA

86-702
Rev 03/21/2025

Specifications

Allied H6H Winches for Komatsu D61X-23, D61X-24, D65X-17, D65X-18, and D71-24

Komatsu Dozer Model		D61X-23 D61X-24	D65X-17 D65X-18	D71-24
Standard Gear Ratio		153:1	187:1	187:1
Bare Drum	Maximum Line Pull* lbs (kg)	83,300 (37,800)	113,800 (51,600)	113,800 (51,600)
	Maximum Line Speed fpm (mpm)	74 (23)	64 (20)	62 (19)
Full Drum	Maximum Line Pull* lbs (kg)	44,700 (20,300)	63,600 (28,800)	61,950 (28,100)
	Maximum Line Speed fpm (mpm)	137 (42)	119 (36)	115 (35)
Optional Gear Ratio		117:1	153:1	153:1
Bare Drum	Maximum Line Pull* lbs (kg)	63,700 (28,900)	96,800 (43,900)	94,400 (42,800)
	Maximum Line Speed fpm (mpm)	96 (29)	72 (22)	76 (23)
Full Drum	Maximum Line Pull* lbs (kg)	34,200 (15,500)	51,900 (23,500)	50,650 (23,000)
	Maximum Line Speed fpm (mpm)	179 (55)	145 (44)	141 (43)
Weights	Winch	2,890 (1,311)	2,830 (1,284)	2,830 (1,284)
	Fairlead	875 (397)	875 (397)	875 (397)
	Integral Arch		1,100 (499)	1,100 (499)
Dimensions <i>See below</i>	A - Ground to highest point in (mm)	59 (1,499)	61 (1,549)	62 (1,575)
	B - Ground to drum center in (mm)	45 (1,143)	47 (1,194)	48 (1,219)
	C - Ground to drawbar center in (mm)	26 (660)	28 (711)	29 (737)
	D - Dozer face to end of winch in (mm)	46 (1,168)	40 (1,016)	46 (1,168)
	E - Dozer face to drum center in (mm)	35 (889)	29 (737)	35 (889)
	F - Dozer face to drawbar center in (mm)	34 (864)	28 (711)	34 (864)
	G - Winch max. width (not shown) in (mm)	40 (1,016)	40 (1,016)	40 (1,016)
Wire Rope Capacity	Barrel Diameter in (mm)		10 (254)	
	Wire Rope Diameter	3/4 in (19 mm)	413 ft. (126 m)	
		7/8 in (22 mm)	297 ft. (91 m)	
		1 in (25 mm)	230 ft. (70 m)	
	Ferrule	Name	Light	
		Length	2.25 in. (57 mm)	
Diameter		2 in. (51 mm)		

* Maximum Line Pull may be limited by wire rope breaking strength.

