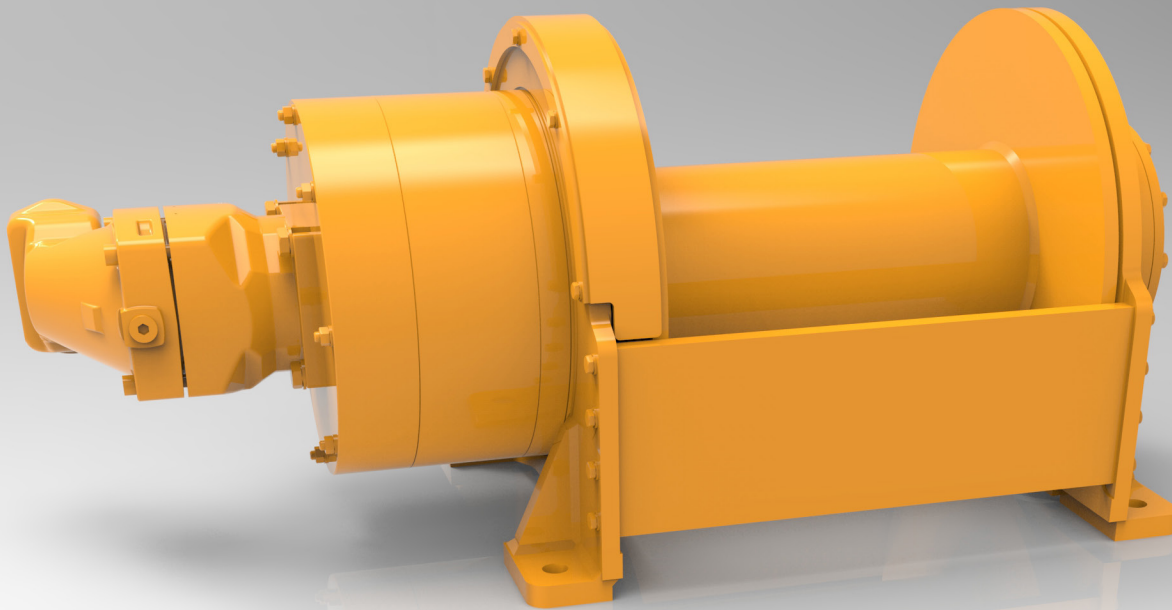


AH250 Yarder Winch



Allied, the Industry's Trusted Winch of Choice



Purpose Built Mobile Yarder Winch Solution from the Winch Manufacturer You Trust

- High Speed/High Torque Hydraulic Motor for Optimal Performance
- Hi-Speed Forward & Reverse Gear Ratio to Maximize Productivity
- Large Capacity Drum for Increased Versatility
- Spring Applied, Hydraulically Released High Capacity Brake
- Fabricated Steel Frame and Drum for Maximum Service Life

Wire Rope Capacity					Bare Drum				Full Drum			
					Lo-Speed		Hi-Speed		Lo-Speed		Hi-Speed	
9/16"	5/8"	3/4"	7/8"	1"	Line Pull	Line Speed	Line Pull	Line Speed	Line Pull	Line Speed	Line Pull	Line Speed
1,940' (591 m)	1,589' (484 m)	1,121' (342 m)	806' (246 m)	535' (163 m)	24,445 lbs 11,088 kgs	545 fpm 166 mpm	9,030 lbs 4,096 kgs	1,525 fpm 465 mpm	11,560 lbs 5,244 kgs	1,155 fpm 352 mpm	4,270 lbs 1,937 kgs	3,225 fpm 983 mpm

Performance is based on hydraulic flow at 160 gpm (606 lpm); hydraulic pressure at 5,000 psi (345 bar).

The information provided in this document is intended for informational purposes only and is subject to change without notice.

503.625.2560
marketing@alliedsystems.com
www.alliedsystems.com/winch

MADE IN USA

86-670a
 Rev 02/16/2017