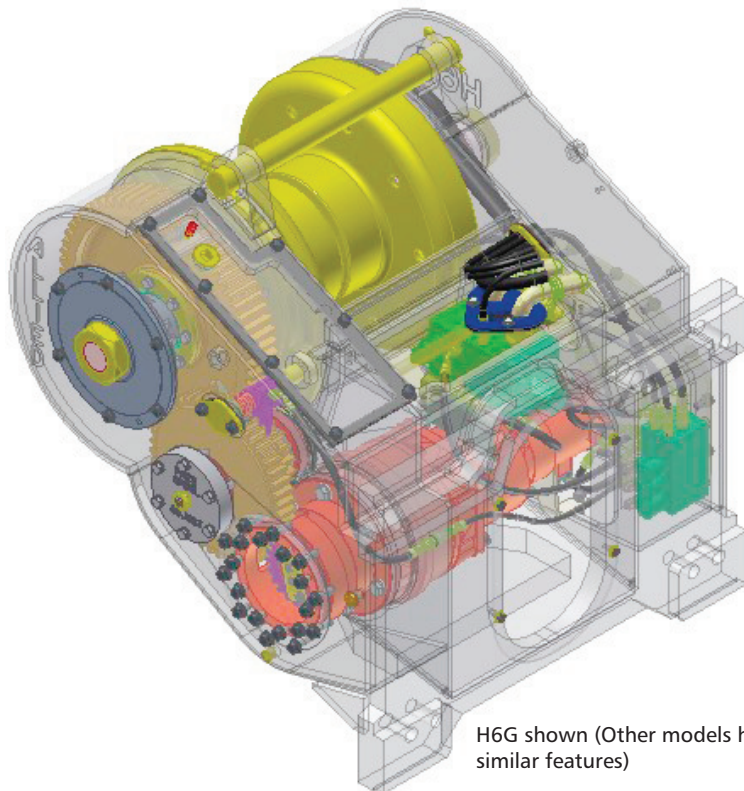


H5C & H6G Hydraulic Winch



Description

The H5C and H6G: a family of hydraulic winches designed for the new generation of hydrostatic and powershift tractors. Simple installation. Precision line speed control. Significant parts commonality with well-proven W5C, W6F and W6G winches.



H6G shown (Other models have similar features)

- ✓ Winch is complete with its own pump, motor and controls. Does not require "winch ready hydraulic" option on tractor. Maximum field installation flexibility.
- ✓ Precision line speed control, as precise as 0.5 ft/min.
- ✓ Two-speed motor for productivity.
- ✓ One low-effort lever controls Brake-On, Line-In, Line-Out.
- ✓ A lower cost single-speed Rescue Winch option is available. Powered by tractor ripper hydraulics for slow speed equipment rescue applications.

Features

- Motor turns only on demand. No constantly turning PTO, less wear and tear
- Welded steel frame with bolt-on attachments for easy installation
- Standard drawbar
- Large covers for easy service access
- Derived from the well-proven W5C and W6G winches, with significant parts commonality
- Standard freespool

Options

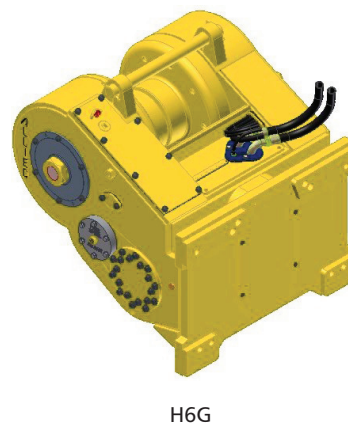
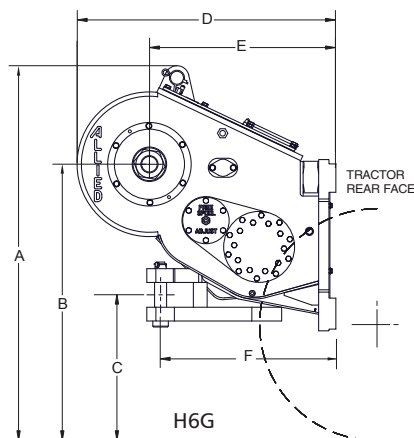
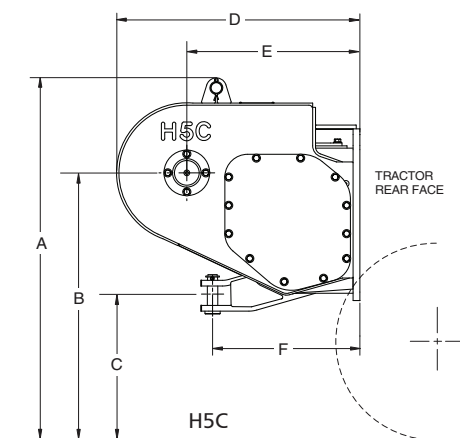
- Four-roller fairlead
- Arch
- Extended heavy-duty drawbar

H5C & H6G Hydraulic Winch



Specifications

WINCH MODEL		H5CH	H5CT	H6GH	H6GT			
TYPE: High Performance (Hi-P)/Rescue		Hi-P	Rescue	Hi-P	Rescue			
WINCH HYDRAULIC SYSTEM		Hydrostatic	Open Loop	Open Loop	Open Loop			
STANDARD GEAR RATIO		45:1	45:1	45:1	60:1			
S T A N D A R D	BARE D R U M	Max. Line Pull (lbs)*	55,700	67,700	67,700	77,600	77,600	
		Line Speed @ Typical Working Load of (lbs)	128 fpm	43 fpm	30 fpm	38 fpm	32 fpm	
		Max. Line Speed	137 fpm	84 fpm	30 fpm	73 fpm	32 fpm	
D A R E	FULL D R U M	Max. Line Pull (lbs)*	30,000	36,500	36,500	41,650	41,650	
		Line Speed @ Typical Working Load of (lbs)	100 fpm	80 fpm	55 fpm	71 fpm	59 fpm	
		Max. Line Speed	16,300	16,300	16,300	20,000	20,000	
			254 fpm	156 fpm	55 fpm	137 fpm	59 fpm	
* Lesser of the maximum the winch will develop or breaking strength of recommended wire rope.								
Max. bare drum speed @ optional gear ratio 75:1					59 fpm	25 fpm		
Dimensional Data** (See illustrations)	A	Ground to top		48 in.		53 in.		
	B	Ground to drum		36 in.		39 in.		
	C	Ground to drawbar		19 in.		20 in.		
	D	Tractor to winch end		35 in.		38 in.		
	E	Tractor to drum		26 in.		28 in.		
	F	Tractor to drawbar		22 in.		26 in.		
	G	Width (not shown)		32 in.		38 in.		
**Based on John Deere 750J & 850J								
Weight (without wire rope)	Winch, approx.			1655 lbs.		2250 lbs.		
	Fairlead (4 roll)			450 lbs.		800 lbs.		
	Integral Arch			875 lbs.		1015 lbs.		
Performance based on								
Pressure (PSI)			6,380	3,500	3,500	3,500	3,500	
Flow Rate (GPM)			32	55	38	55	46	
Wire Rope Capacity								
Winch	Barrel Diameter	Wire Rope Diameter				FERRULE		
		5/8 in.	3/4 in.	7/8 in.	1 in.	Name	Length	Diameter
H5C	8.56 in.	423 ft.	298 ft.	215 ft.		Light	2 1/4 in.	2 in.
H6G	10.00 in.		399 ft.	287 ft.	223 ft.	Light	2 1/4 in.	2 in.



Notes:

- H5C mounting dimensions based on 145-HP tractor (e.g. JD750J), and H6G based on 185-HP tractors (e.g. JD850J).
- Rescue winch for occasional equipment rescue only. Not to be used more than three times per eight-hour shift to prevent hydraulic overheating. Use standard model for production logging or frequent winching applications.



21433 SW Oregon Street
 Sherwood, OR 97140 USA
 phone: 503.625.2560
 fax: 503.625.7269
 www.alliedsystems.com
 marketing@alliedsystems.com

DISTRIBUTED BY:

