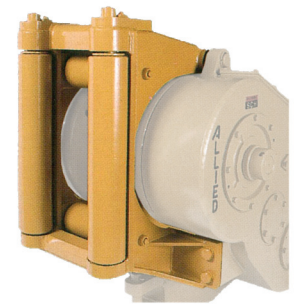




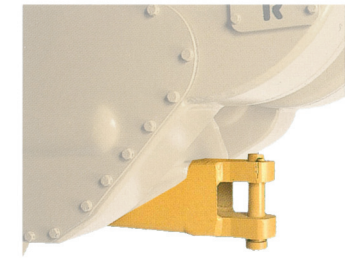
Allied Winches for Dressta Dozers

Options



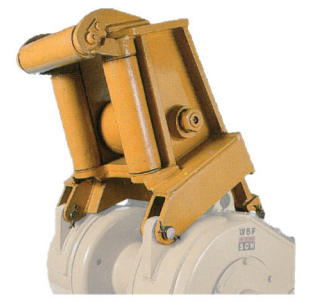
Fairlead

Designed for maximum line pull from all angles. Strong vertical and horizontal rollers to reduce wire rope damage.



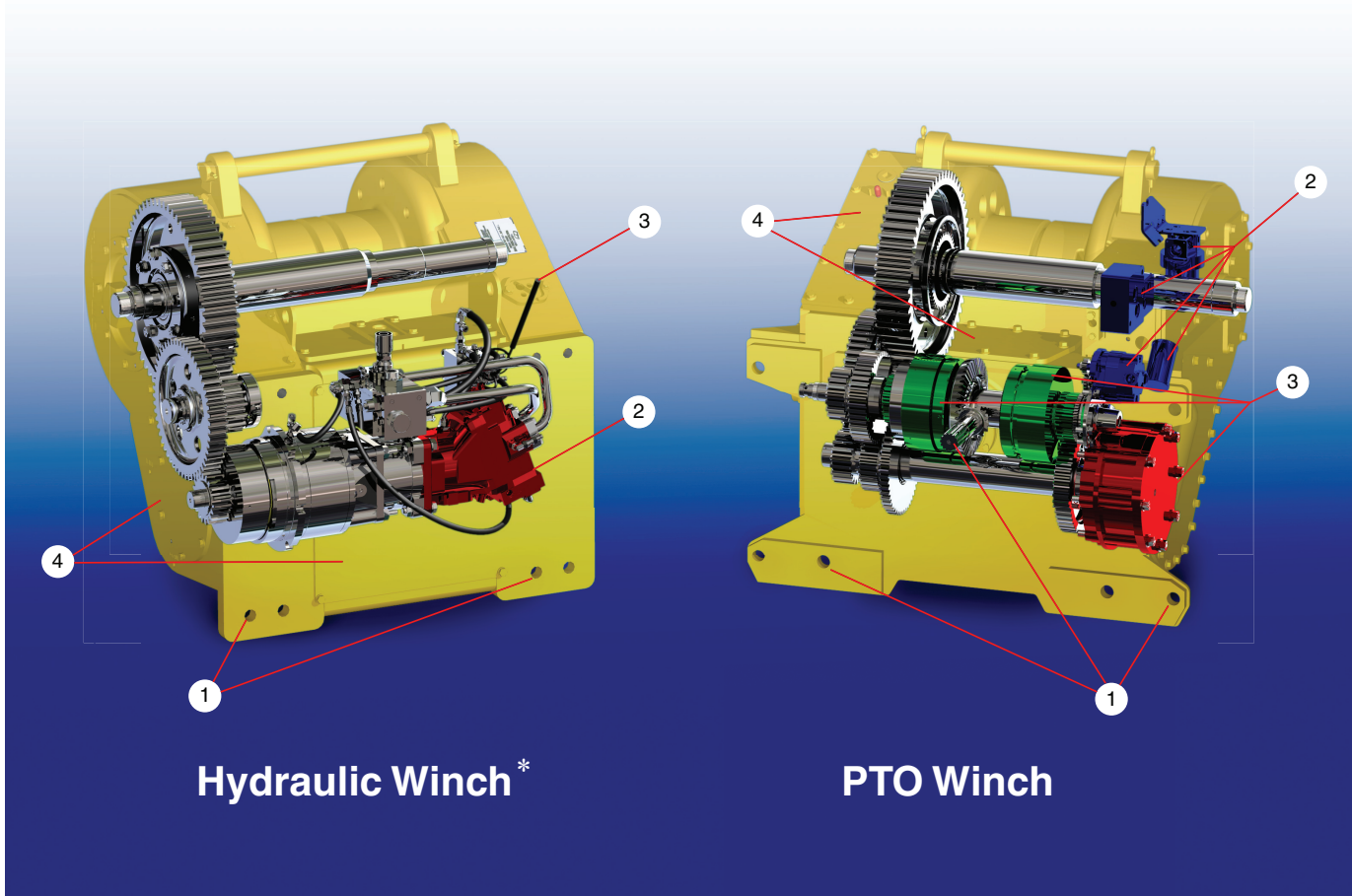
Drawbar

Provides an additional hitch for towing. Bolt-on drawbar optional on W3C and H4A. Built-in drawbar comes standard on all other models.



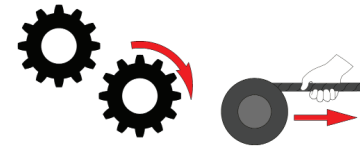
Integral Arch

Makes ground skidding easier by lifting butt-ends of logs.



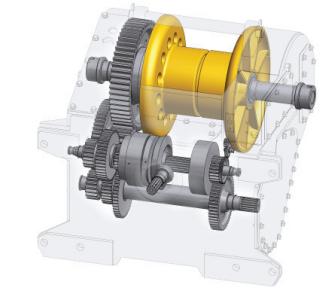
Hydraulic Winch *

PTO Winch



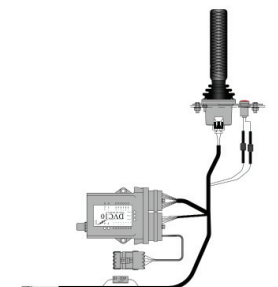
Freespool

This disengages the drum from the gearing. Allows the winch line to be pulled out easily by hand. Standard on W3C, H4A, W5C, H5C W6F and W6G winches.



Gearing

We offer a wide variety of gear ratios to meet different line speed requirements.



Electronic Controls

Simplifies winch installation and provides excellent line speed control.

Parts



Service Parts

World-class parts support. 98% same day fill rate. Orders received by 3 PM Pacific time shipped same day. Arrives at your office by 10am next day in the U.S. by special courier.

Features

Hydraulic Winch Features

1. Simple "Plug and Play" installation – just bolt the winch to the tractor. No need for "winch ready" option on tractor.
2. Motor turns only on demand – less wear and tear, quiet operation.
3. Finger tip precision control – line speeds as fine as 0.5 ft/min (150 mm/min).
4. Large covers for easy service access.

* Check with Allied Systems Company for hydraulic winches details.

PTO Winch Features

1. Simple "Plug and Play" installation – just bolt the winch to the tractor. No need for "winch ready" option on tractor.
2. SCH (Self Contained Hydraulics) – no exposed hydraulic lines.
3. Oil Clutch, Oil Brake – eliminates adjustments, runs cooler.
4. Large covers for easy service access.



Allied Systems Company
21433 SW Oregon Street
Sherwood, OR 97140, USA
Phone: 503.625.2560
Fax: 503.625.7269 503.625.5132
marketing@alliedsystems.com
www.alliedsystems.com

ALLIED WINCHES FOR DRESSTA DOZERS

DOZER MODEL (Specs based on representative model*, others similar)		TD-7R	TD-8R	TD-9R TD-10R*	TD14M	TD-15M* SB30M	TD-20M	TD-25M	SB-60M				
WINCH MODEL STANDARD GEAR RATIO		W3C 39:1	W3C 39:1	W3C 39:1	W5C 66:1	W6G 83:1	W8L 50:1	W12E 84:1	W12E 84:1				
Unit													
S T A N D A R D	BARE DRUM	Maximum Line Pull (pounds)**	lbs (kg)	34,700 (15,740)	37,700 (17,100)	47,000 (21,319)	68,200 (30,935)	88,800 (40,279)	113,000 (51,256)	138,800 (62,959)	138,800 (62,959)		
		Approximate Line Speed @	fpm (mpm)	83 (25)	95 (29)	110 (34)	66 (20)	62 (19)	108 (33)	87 (27)	87 (27)		
		Typical Working Load of (pounds)	lbs (kg)	20,000 (9,072)	20,000 (9,072)	20,000 (9,072)	30,000 (13,608)	40,000 (18,144)	50,000 (22,680)	80,000 (36,287)	80,000 (36,287)		
	A D V A N C E	FULL DRUM	Maximum Line Pull (pounds)**	lbs (kg)	19,900 (9,026)	21,600 (9,798)	27,000 (12,247)	68,200 (30,935)	88,800 (40,279)	80,000 (36,287)	138,800 (62,959)	138,800 (62,959)	
			Approximate Line Speed @	fpm (mpm)	23 (7)	41 (12)	90 (27)	109 (33)	41 (12)	97 (30)	100 (30)	100 (30)	
			Typical Working Load of (pounds)	lbs (kg)	19,200 (8,709)	20,000 (9,072)	20,000 (9,072)	30,000 (13,608)	40,000 (18,144)	50,000 (22,680)	80,000 (36,287)	80,000 (36,287)	
Maximum Line Speed		fpm (mpm)	268 (82)	268 (82)	272 (83)	134 (41)	129 (39)	267 (81)	175 (53)	175 (53)			
O P T I O N A L	MAXIMUM LINE SPEED BARE DRUM USING OPTIONAL GEAR RATIO <small>Shaded ratios not available for this model</small>	56:1	fpm (mpm)					107 (33)					
		61:1	fpm (mpm)	100 (30)	100 (30)	101 (31)							
		72:1	fpm (mpm)						113 (34)				
		94:1	fpm (mpm)						87 (27)				
		100:1	fpm (mpm)				48 (15)						
		103:1	fpm (mpm)						58 (18)				
D I M E N S I O N A L	DIMENSIONAL DATA <small>See illustrations</small>	A	Ground to highest point	in (mm)	46 (1,168)	46 (1,168)	48 (1,219)	52 (1,321)	56 (1,422)	64 (1,626)	67 (1,702)	67 (1,702)	
		B	Ground to drum center	in (mm)	35 (889)	35 (889)	37 (940)	39 (991)	42 (1,067)	49 (1,245)	51 (1,295)	51 (1,295)	
		C	Ground to drawbar center	in (mm)	21 (533)	21 (533)	23 (584)	23 (584)	23 (584)	25 (635)	26 (660)	26 (660)	
		D	Dozer face to end of winch	in (mm)	30 (762)	30 (762)	30 (762)	35 (889)	39 (991)	34 (864)	42 (1,067)	42 (1,067)	
		E	Dozer face to drum center	in (mm)	21 (533)	21 (533)	21 (533)	26 (660)	29 (737)	23 (584)	29 (737)	29 (737)	
		F	Dozer face to drawbar center	in (mm)	23 (584)	23 (584)	23 (584)	22 (559)	28 (711)	27 (686)	34 (864)	34 (864)	
		G	Winch max. width (not shown)	in (mm)	28 (711)	28 (711)	28 (711)	32 (813)	38 (965)	41 (1,041)	48 (1,219)	48 (1,219)	
S H I P P I N G	SHIPPING WEIGHTS <small>Shaded options not available</small>	Winch, approx. w/o wire rope	lbs (kg)	1420 (644)	1420 (644)	1420 (644)	1950 (885)	2900 (1,315)	2950 (1,338)	4825 (2,189)	4825 (2,189)		
		Fairlead	lbs (kg)	310 (141)	310 (141)	310 (141)	450 (204)	875 (397)	900 (408)	1230 (558)	1230 (558)		
		Drawbar	lbs (kg)	55 (25)	55 (25)	55 (25)	w/winch	w/winch	w/winch	w/winch	w/winch		
		Integral Arch	lbs (kg)	420 (191)	420 (191)	420 (191)	875 (397)	1100 (499)					
W I R E	WIRE ROPE CAPACITY <small>Shaded sizes not available Capacity per SAE J1158</small>	WINCH MODEL	Barrel Diameter	WIRE ROPE DIAMETER						FERRULE (Swaged Drum Type)			
				1/2 (13 mm.)	5/8 (16 mm.)	3/4 (19 mm.)	7/8 (22 mm.)	1 (25 mm.)	1 1/8 (29 mm.)	1 1/4 (32 mm.)	Name	Length	Diameter
		W3C	8.00 in. (203 mm.)	354 ft. (108 m)	232 ft. (71 m)	164 ft. (50 m)					Bantam	2 in. (51 mm)	1 1/2 in. (38 mm)
		W5C	8.56 in. (217 mm.)		423 ft. (129 m)	298 ft. (91 m)	215 ft. (65 m)				Light	2 1/4 in. (57 mm)	2 in. (51 mm)
		W6G	10.00 in. (254 mm.)			376 ft. (115 m)	271 ft. (83 m)	210 ft. (64 m)			Light	2 1/4 in. (57 mm)	2 in. (51 mm)
		W8L	12.00 in. (305 mm.)				354 ft. (108 m)	275 ft. (84 m)	220 ft. (67 m)		Junior	2 3/8 in. (60 mm)	2 1/4 in. (57 mm)
W12E	14.00 in. (356 mm.)					286 ft. (87 m)	229 ft. (70 m)	182 ft. (55 m)	Junior	2 3/8 in. (60 mm)	2 1/4 in. (57 mm)		

Notes:
 **Maximum line pull is the lesser of the maximum line pull that the dozer will develop with the standard gear ratio or the breaking strength for the maximum recommended wire rope for that winch model.
 Where general information, pictures and descriptions are provided, some illustrations and specifications may require options not shown in the picture or included in the description.
 Specifications are subject to change without notice or obligation. Please consult your dealer for details.

