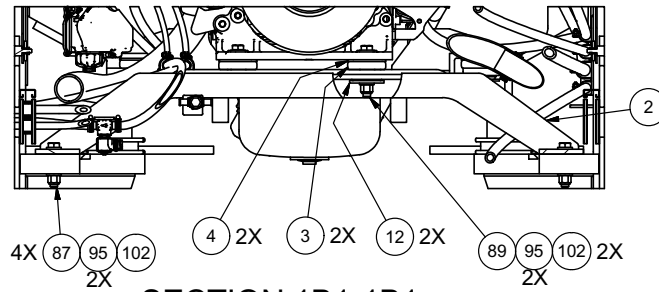

Power Unit Installation

Power Unit Installation

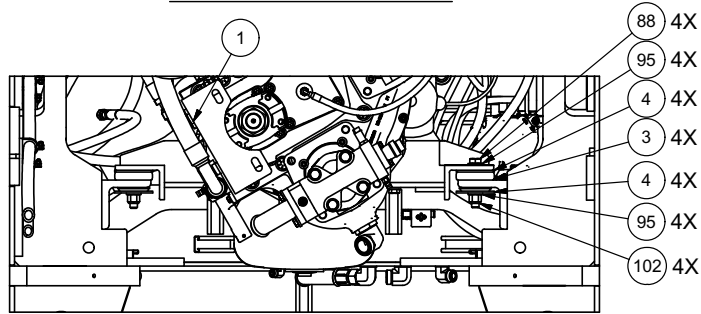
Item	Part No.	Qty	Description	Item	Part No.	Qty	Description
	602022		Power Unit Installation				
1	* 602056	1	. Power Unit Assembly, Cummins	86	R13801782	2	. Capscrew
2	602344	1	. Engine Mount	87	221666W	4	. Capscrew
3	234497	6	. Vibration Dampener	88	Y17C-1272	4	. Capscrew
4	578361	10	. Washer	89	236922	2	. Capscrew
5	602628	1	. Screw Mount	90	131137W	4	. Capscrew
6	602632	1	. DPF Mount	91	221767W	21	. Washer
7	208241	1	. Clamp	92	R13802914	42	. Washer
9	603313	1	. Tube, Exhaust	93	R13811432	42	. Washer
10	603314	1	. Exhaust Stack	94	221771W	8	. Washer
11	600314	1	. Exhaust Bellows	95	221777W	20	. Washer
12	551132	2	. Washer, Snub	96	221703W	8	. Hex Nut
13	602640	2	. Angle Bracket	97	41494	4	. Stud
14	215156	4	. Band, Mounting	98	221705W	8	. Hex Nut
15	601369	1	. Bracket, Air Filter Mount	99	R13811190	33	. Locknut
16	603553	1	. Air Cleaner Tube	100	R13805167	16	. Locknut
17	YDHA 8213-11.00	1	. Tube	101	602641	1	. Mount Plate
18	224354	1	. Elbow	102	R13811196	10	. Locknut
19	226793	1	. Elbow, Air Intake	103	595832	1	. Loctite
20	207245	2	. T-Bolt Clamp	104	237567	12	. Locknut
21	210788	2	. T-Bolt Clamp	106	15113W	6	. Locknut
22	202259	1	. T-Bolt Clamp	107	R13808094	10	. Clip, Insulated
23	226792	1	. T-Bolt Clamp	108	221763W	12	. Washer
24	602696	1	. Tube, CAC	110	221499W	12	. Capscrew
25	602697	1	. Tube, CAC	111	R13811054	6	. Capscrew
26	243488	4	. Connector	112	293628W	4	. Capscrew
27	603508	8	. T-Bolt Clamp	115	162572W	4	. Capscrew
28	598222	1	. Tube, Radiator	116	CLP0100112	8	. Clamp, Hydra-Zorb
29	598214	1	. Hose,	120	231296	11	. Clamp
31	225369	6	. T-Bolt Clamp	121	231250	7	. Clamp
33	600891	1	. Breather	122	588316	2	. Clamp, Hydra-Zorb
35	591648	1	. Ball Valve	124	601980	1	. Air Shroud
36	2510143	1	. Fitting	125	601991	1	. Plate, Air Intake Shroud
37	209414	1	. Fitting	126	601992	1	. Gasket, Neoprene Shroud
39	R13807521	1	. Fitting	127	18496W	4	. Capscrew
40	599384	1	. Fitting	128	18515W	8	. Washer
42	28971	1	. Fitting	129	217123	1 Gal	. Adhesive, Contact
43	592038	1	. Fitting	130	601988	4	. Bumper
48	248624	1	. Fitting	131	75748	4	. Stud
49	201431	11	. Hose Clamp	133	602576	1	. Strainer, Y
50	CLP7051171	4	. Mini Worm Drive Clamp	134	209417	1	. Fitting
51	602638	2	. Strap, DEF Tank	135	15303	1	. Fitting
53	241844	1	. Fitting, Bulkhead	136	602709	1	. Cover Plate
54	208136	1	. Indicator	137	R13801798	2	. Capscrew
55	208137	1	. Fitting, Filter Indicator	138	296416W	2	. Washer
56	209790	2	. Fitting	139	Y23C-M512	2	. Capscrew
57	209511	4	. Fitting	140	603317	4	. Spacer
58	602887	1	. Reducer, Rubber	141	603526	1	. Plate, Supply Module
59	209406	3	. Fitting	142	R13811015	2	. Capscrew
60	603641	1	. Vent Fan	143	599757	2	. Bracket, Cool Line Mount
61	MNT0050025	4	. Knotter Fan Shroud Mount	199	602231	1	. Kit, Hose
62	239419W	1	. Grommet	199.1	211791-38	1	. . Hose, Radiator
63	R13810993	4	. Capscrew	199.2	211791-80	1	. . Hose, Radiator
70	602229	1	. Cummins Hood	199.3	259356-54	1	. . Hose, Heater
71	601385	1	. LH Hood Door	199.4	259356-31	1	. . Hose, Heater
72	602234	1	. RH Hood Door	199.5	259356-17	1	. . Hose, Heater
73	601387	1	. LH Access Panel	199.6	259356-60	1	. . Hose, Heater
74	601388	1	. RH Access Panel	199.7	259356-25	1	. . Hose, Heater
75	601979	4	. Gas Spring	199.8	592605-86	1	. . Hose, Coolant
76	590052	4	. Stop, Door	199.9	592605-93	1	. . Hose, Coolant
77	602578	6	. Knob, Hand	199.10	601412	1	. . Hose Assembly, Fuel
79	602639	2	. Bracket, Dosing Hoses	199.11	602980	1	. . Hose Assembly, Fuel
80	233181	1	. Air Inlet Hood	199.12	602981	1	. . Hose Assembly, Fuel
81	R13811014	12	. Capscrew	199.13	602983	1	. . Hose Assembly
82	R13811016	2	. Capscrew	199.14	R12380	1	. . Hose Assembly
83	R13806527	3	. Capscrew	199.15	591054	1	. . Hose Assembly
84	221532W	12	. Capscrew	199.16	602982	1	. . Hose Assembly, Fuel
85	221563W	8	. Capscrew				

* See Separate Coverage

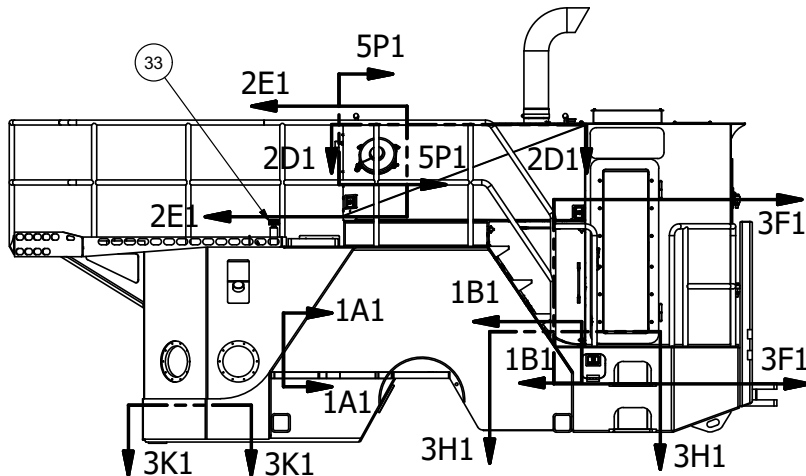
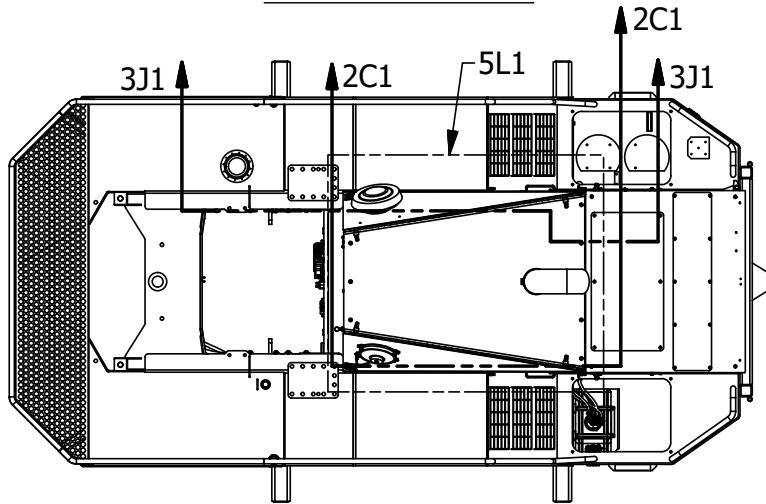
Power Unit Installation

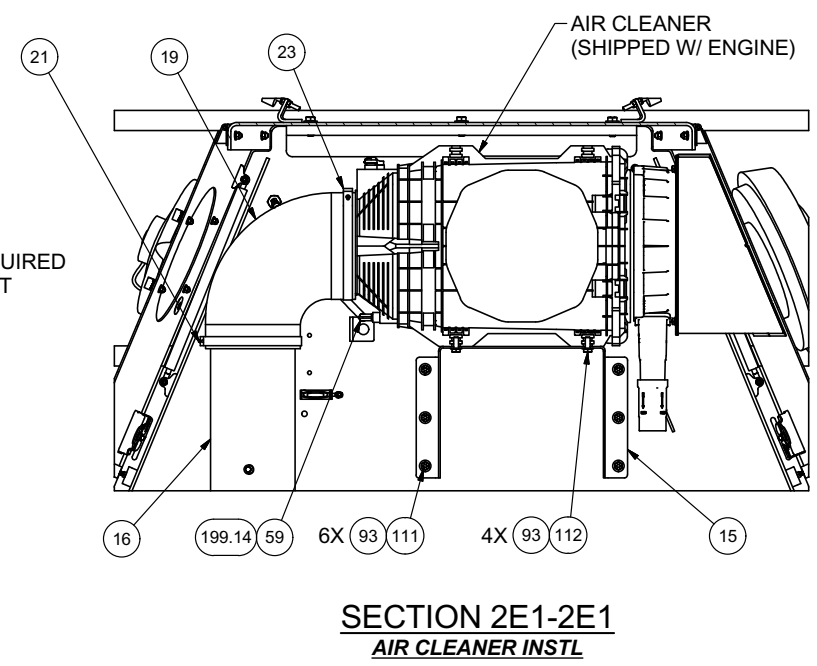
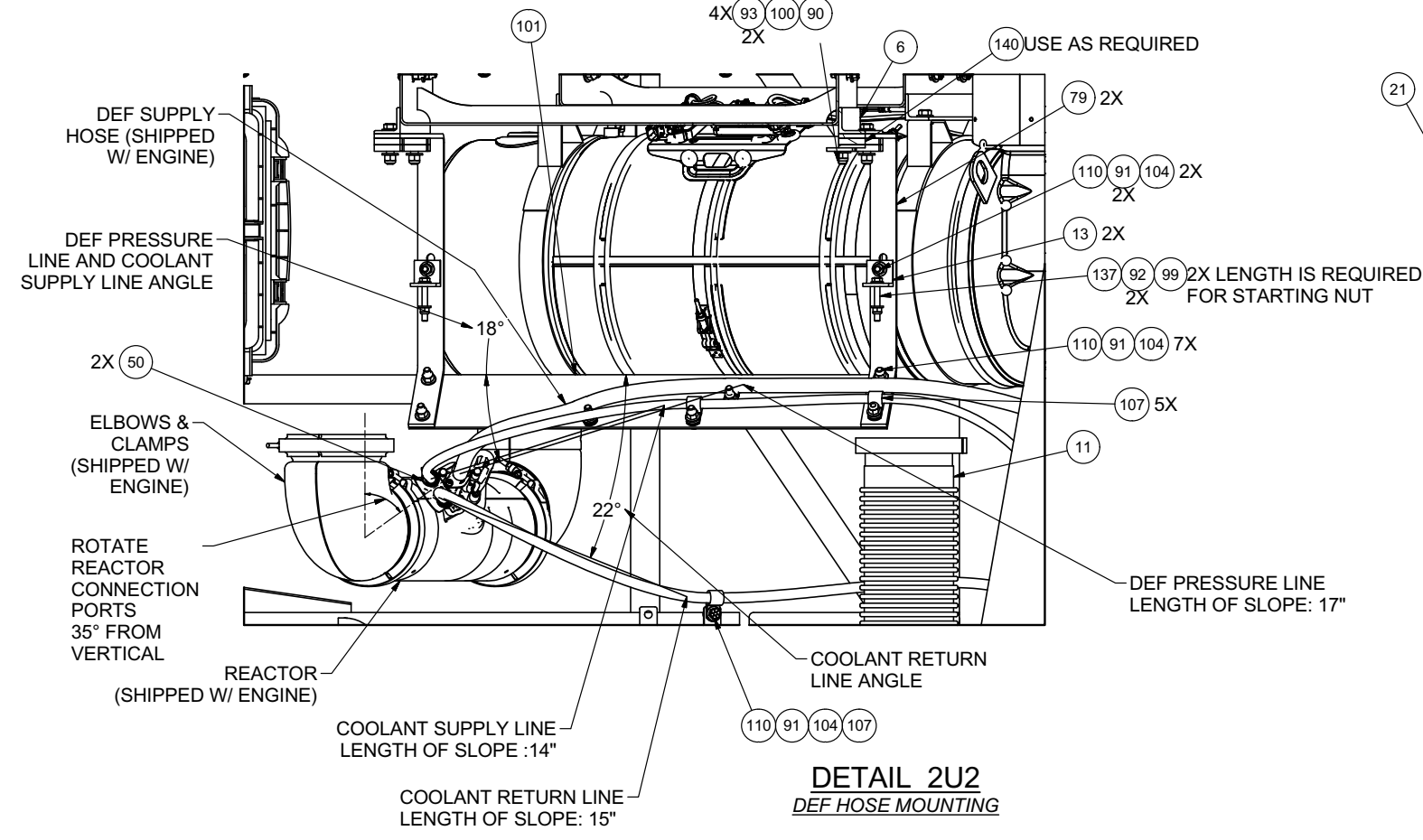
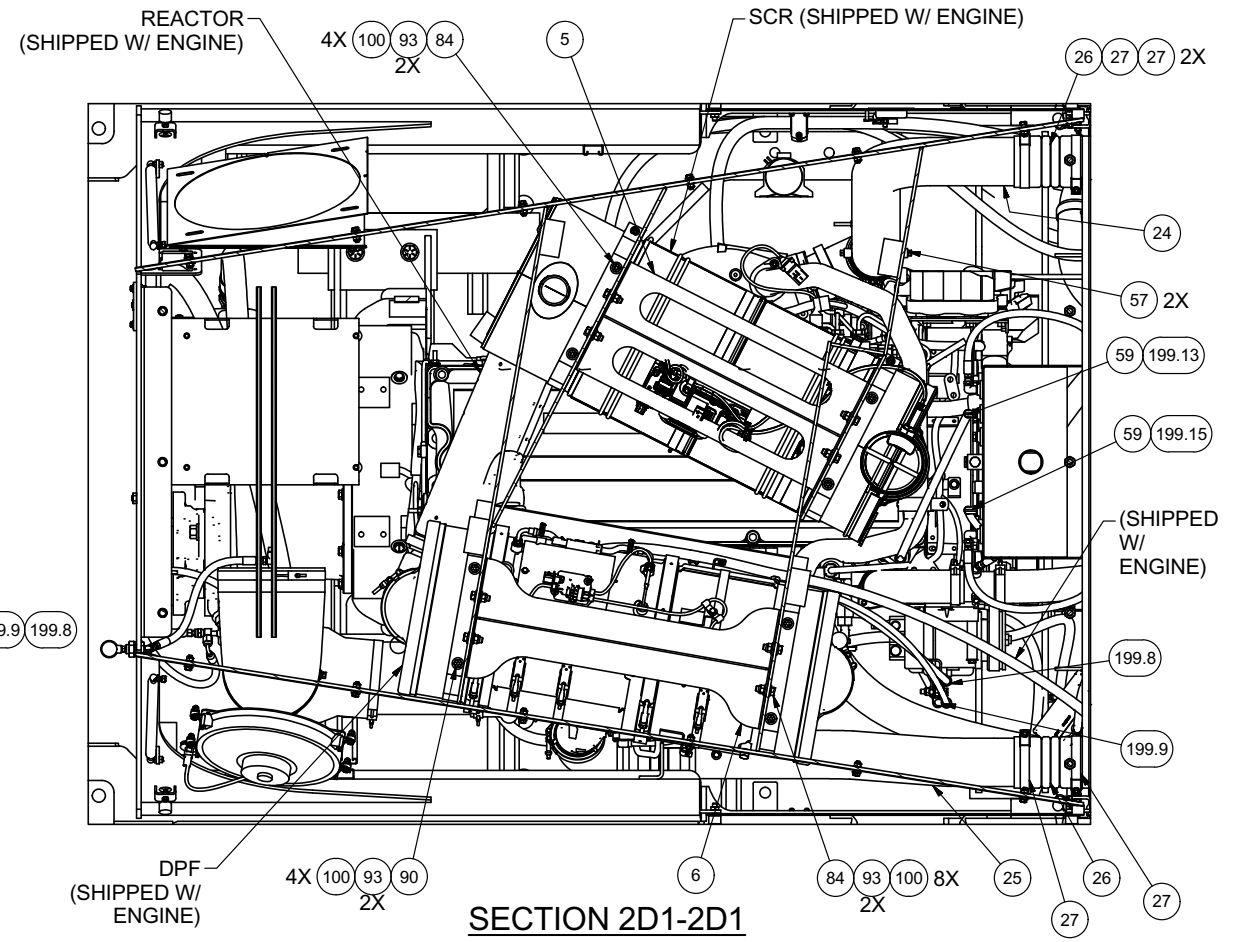
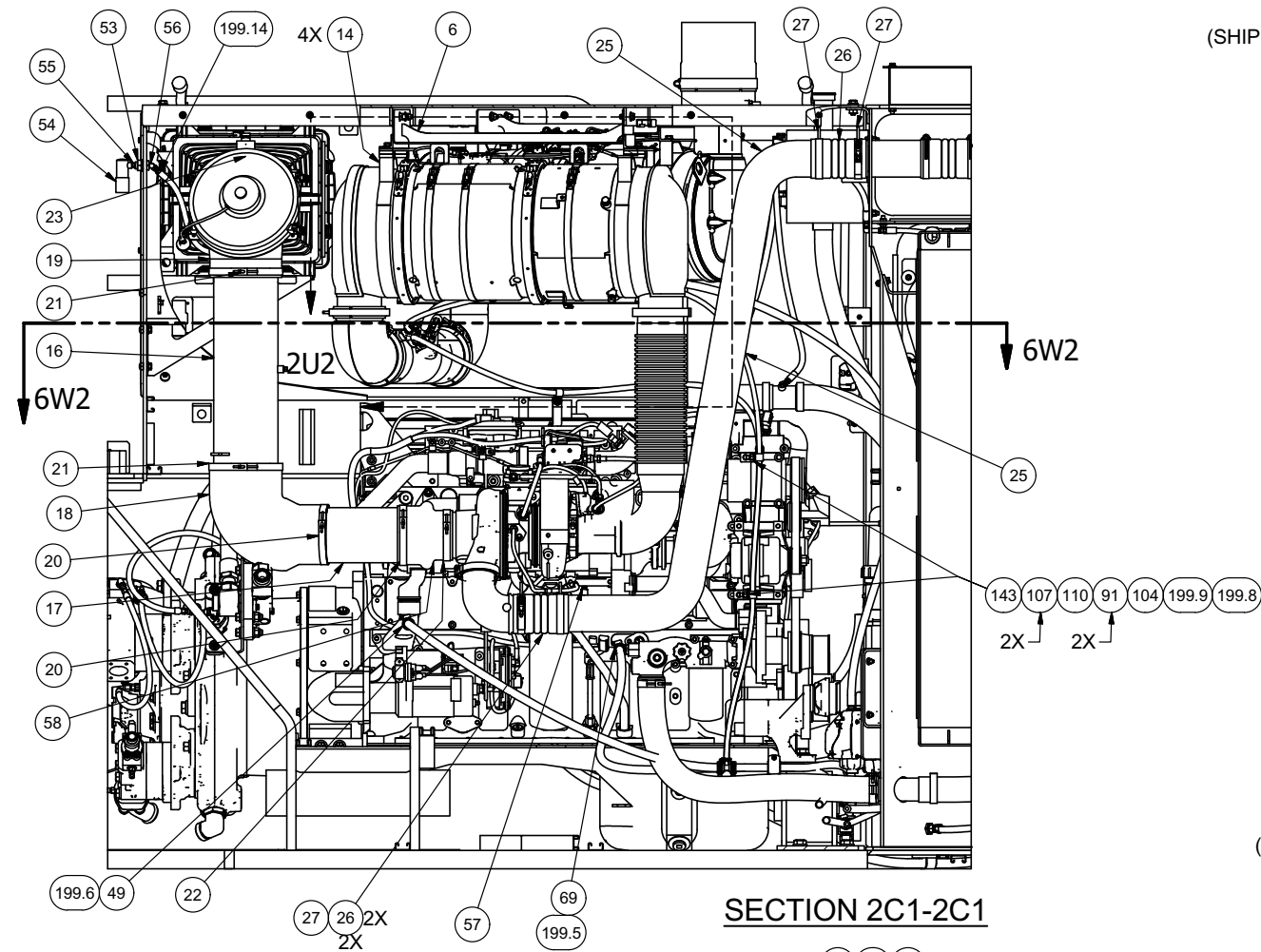


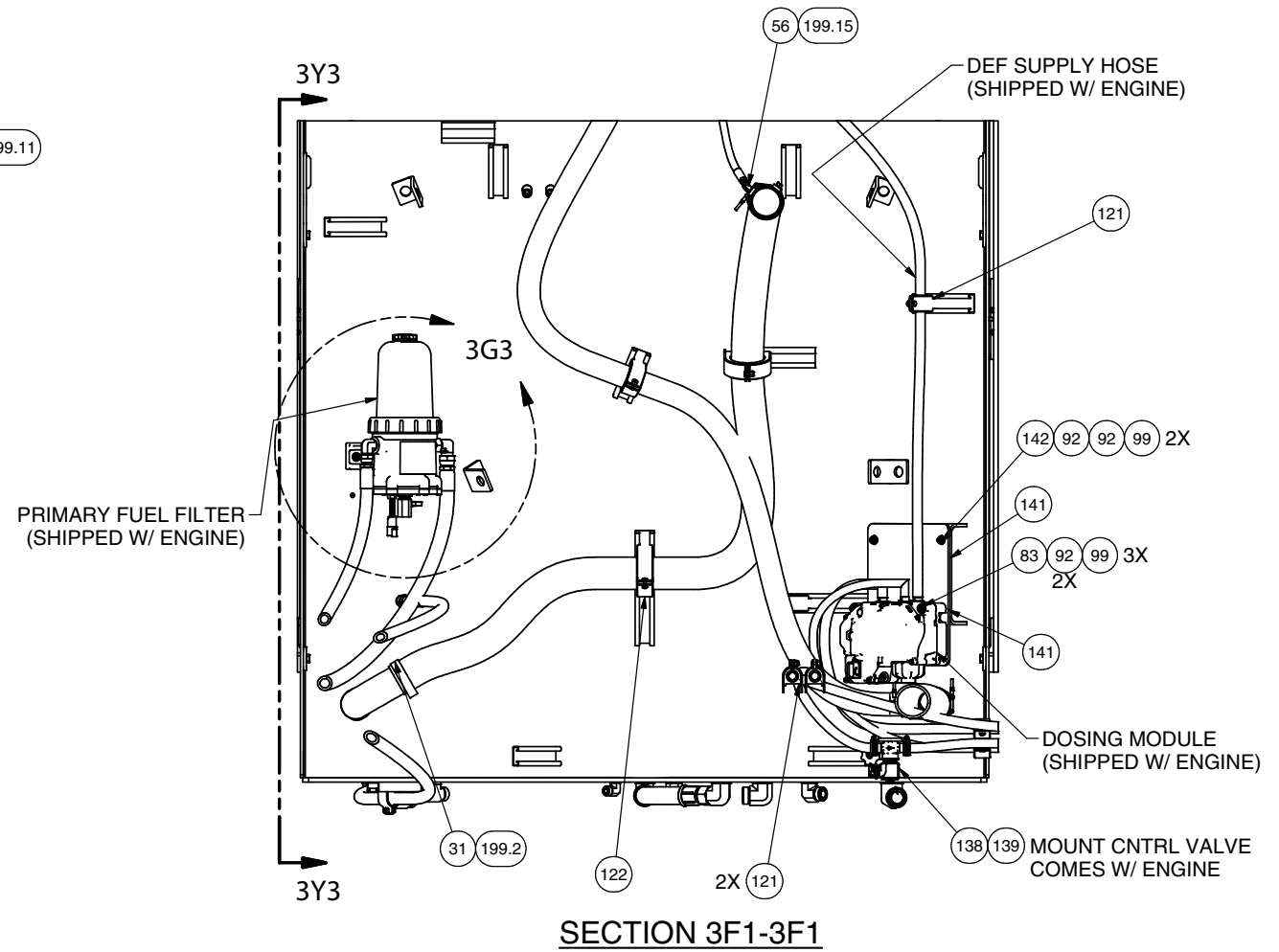
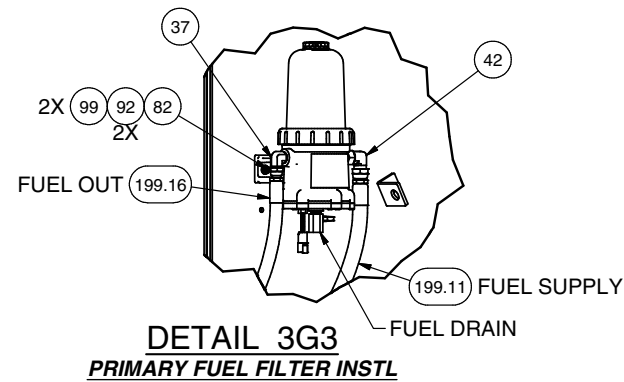
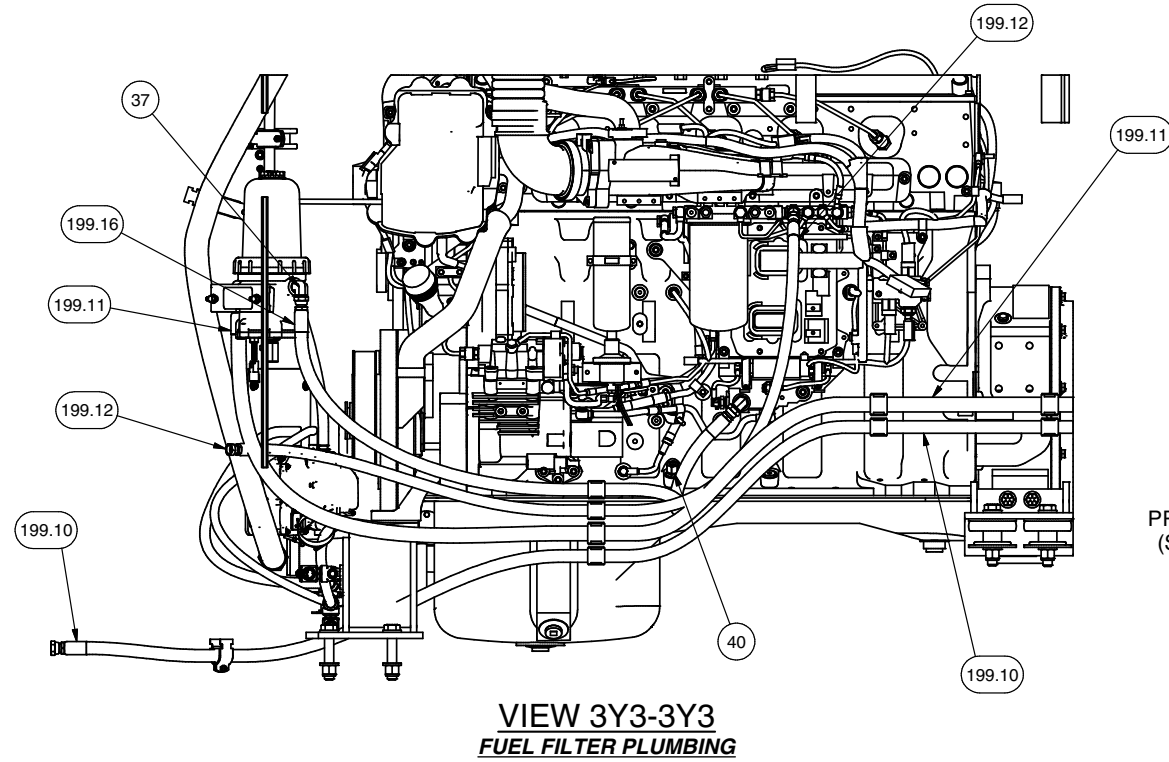
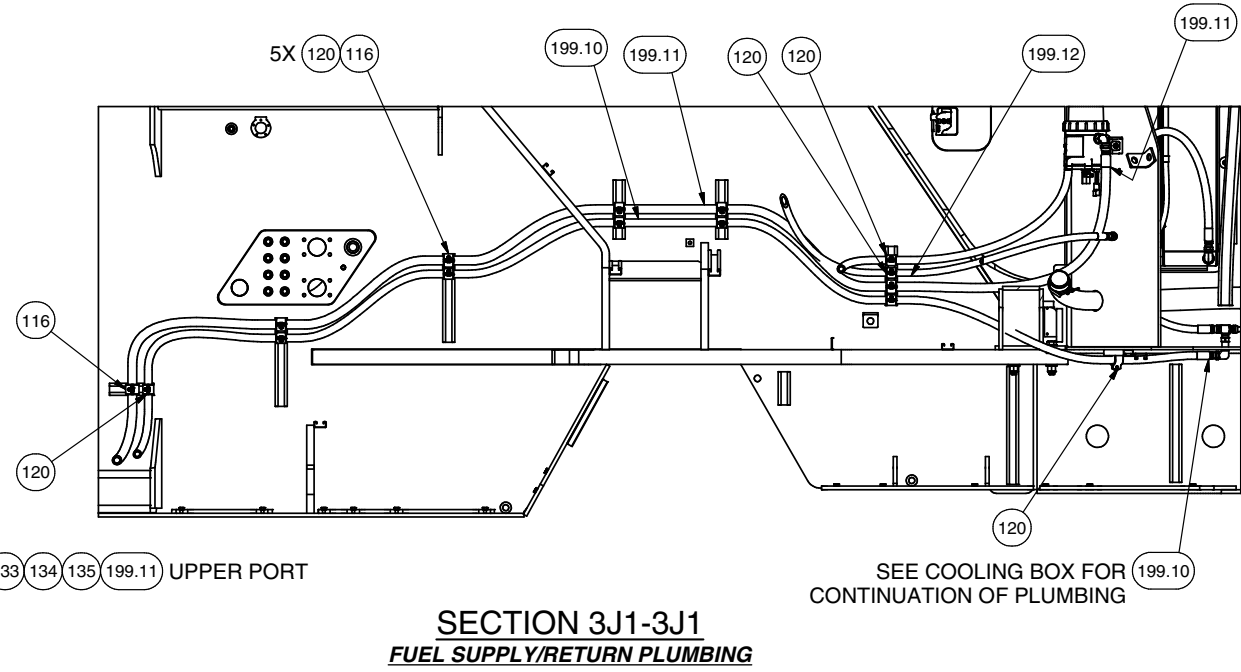
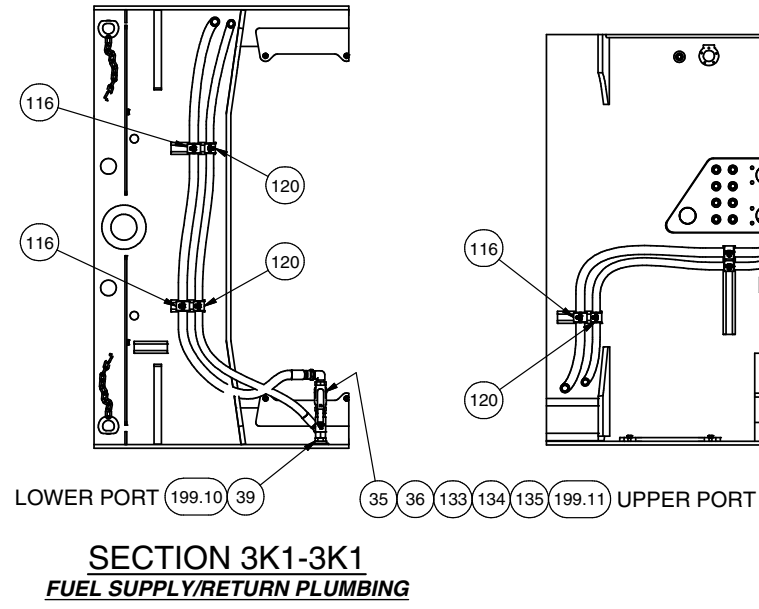
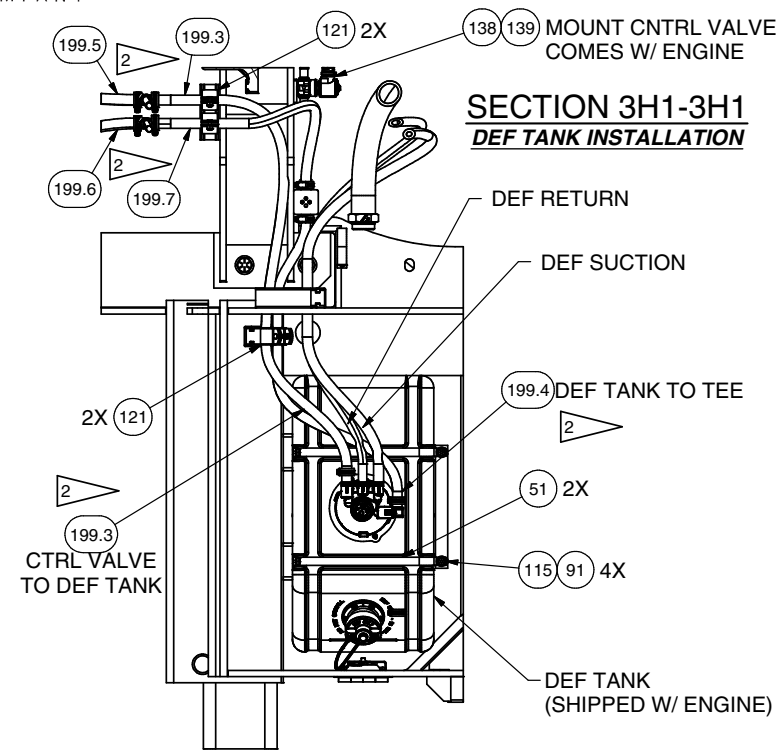
SECTION 1B1-1B1
FRONT ENGINE MNT INSTL



SECTION 1A1-1A1
REAR ENGINE MNT INSTL





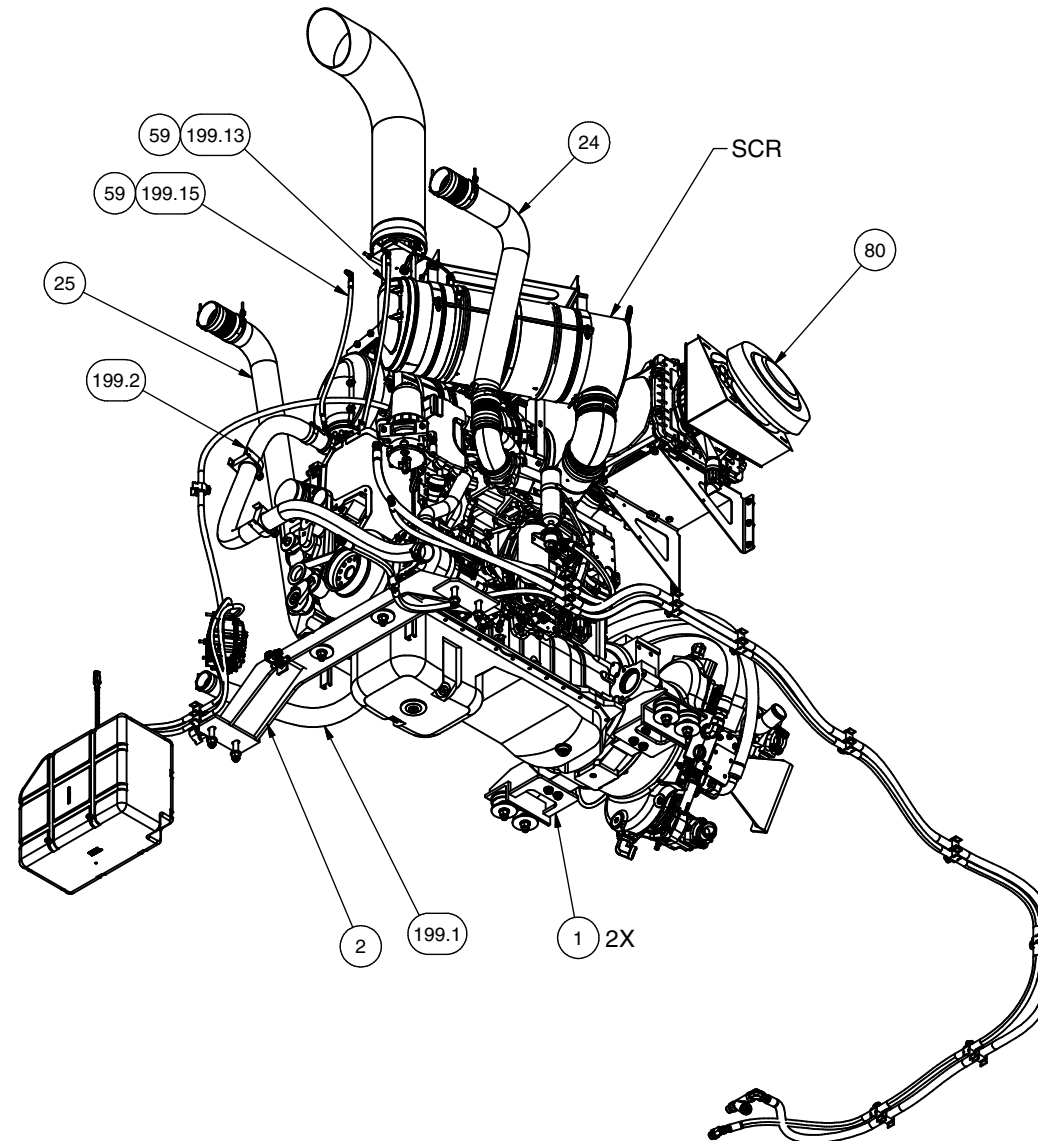
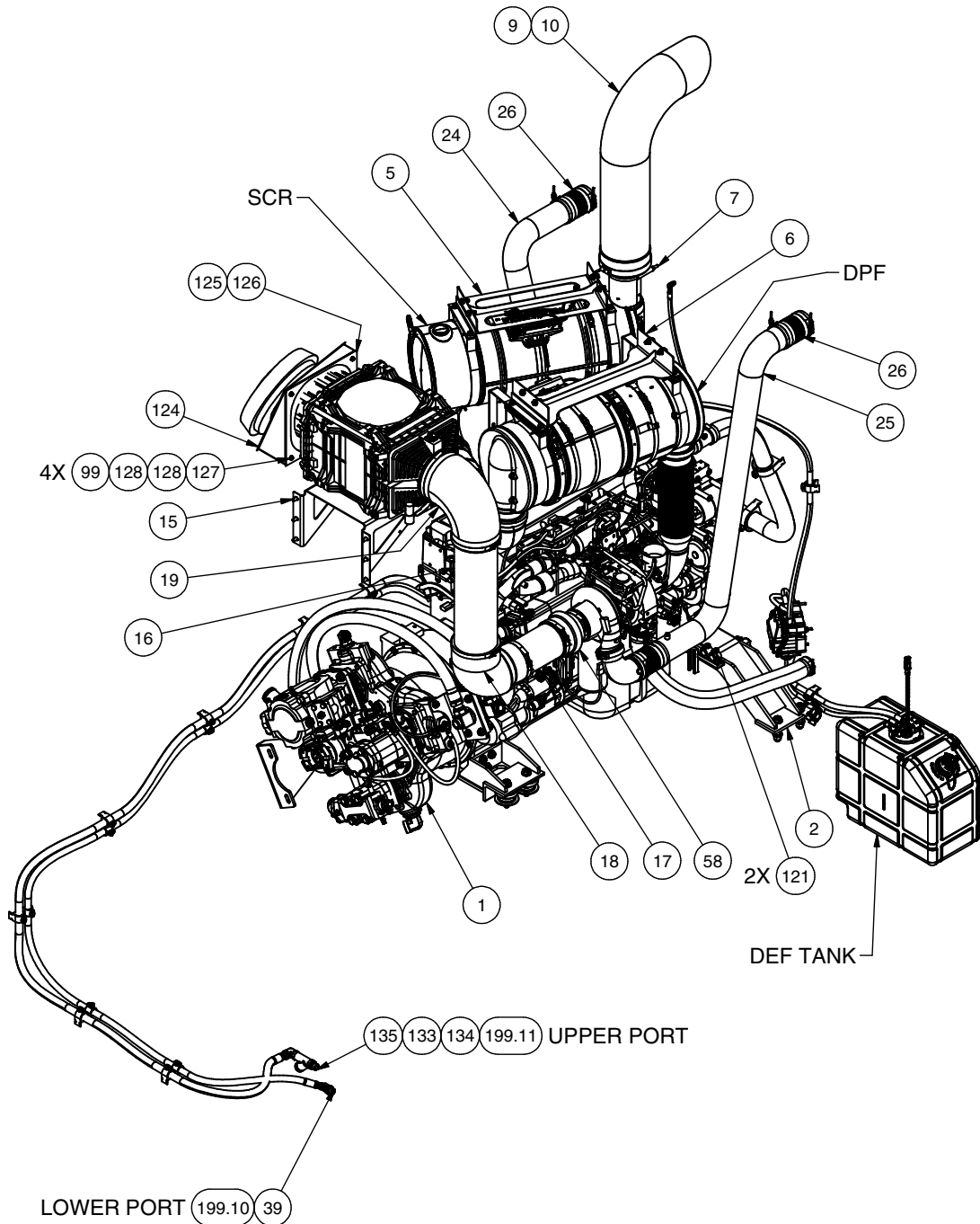
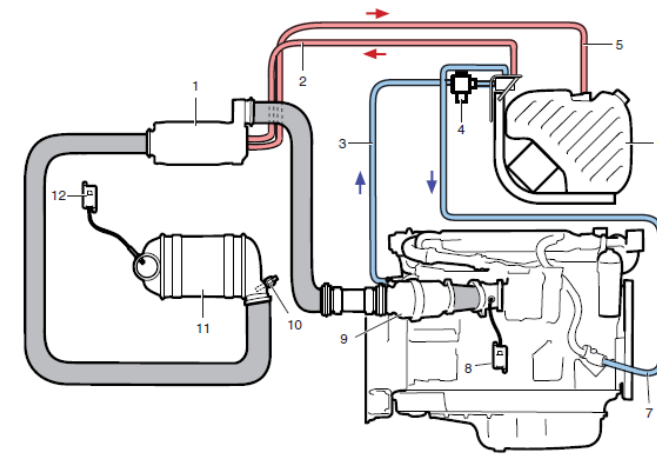


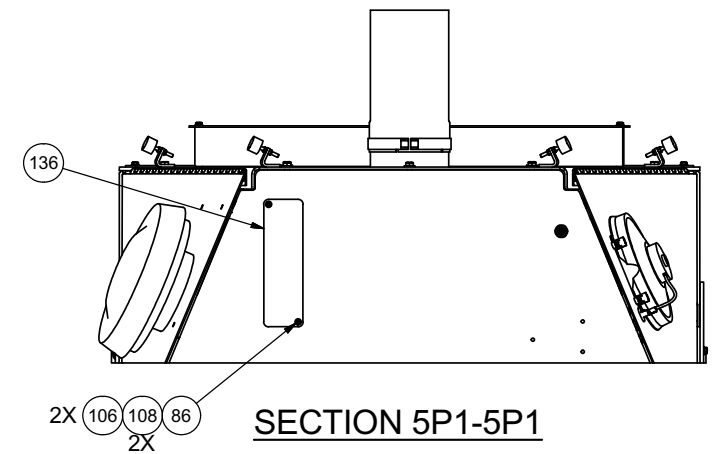
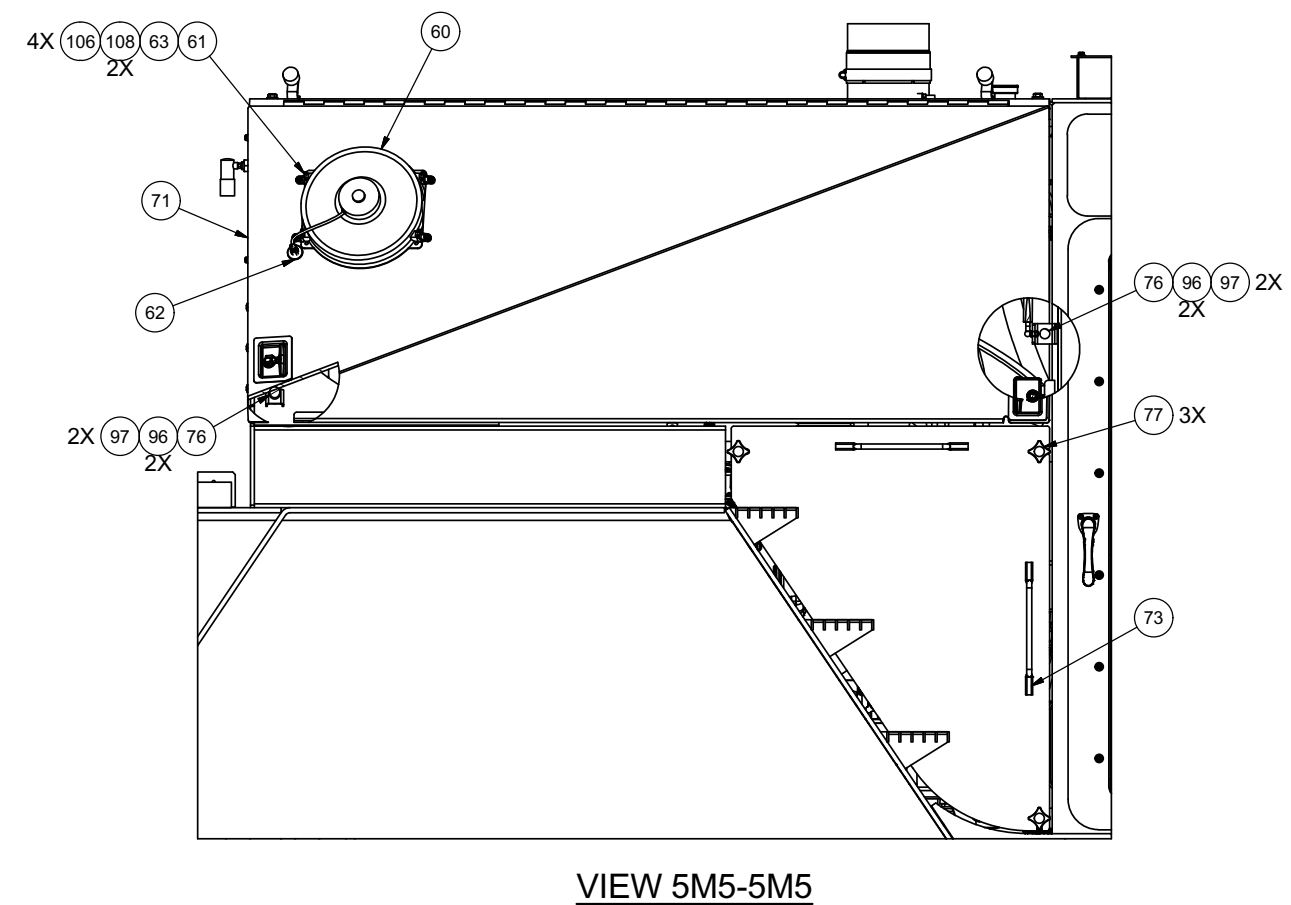
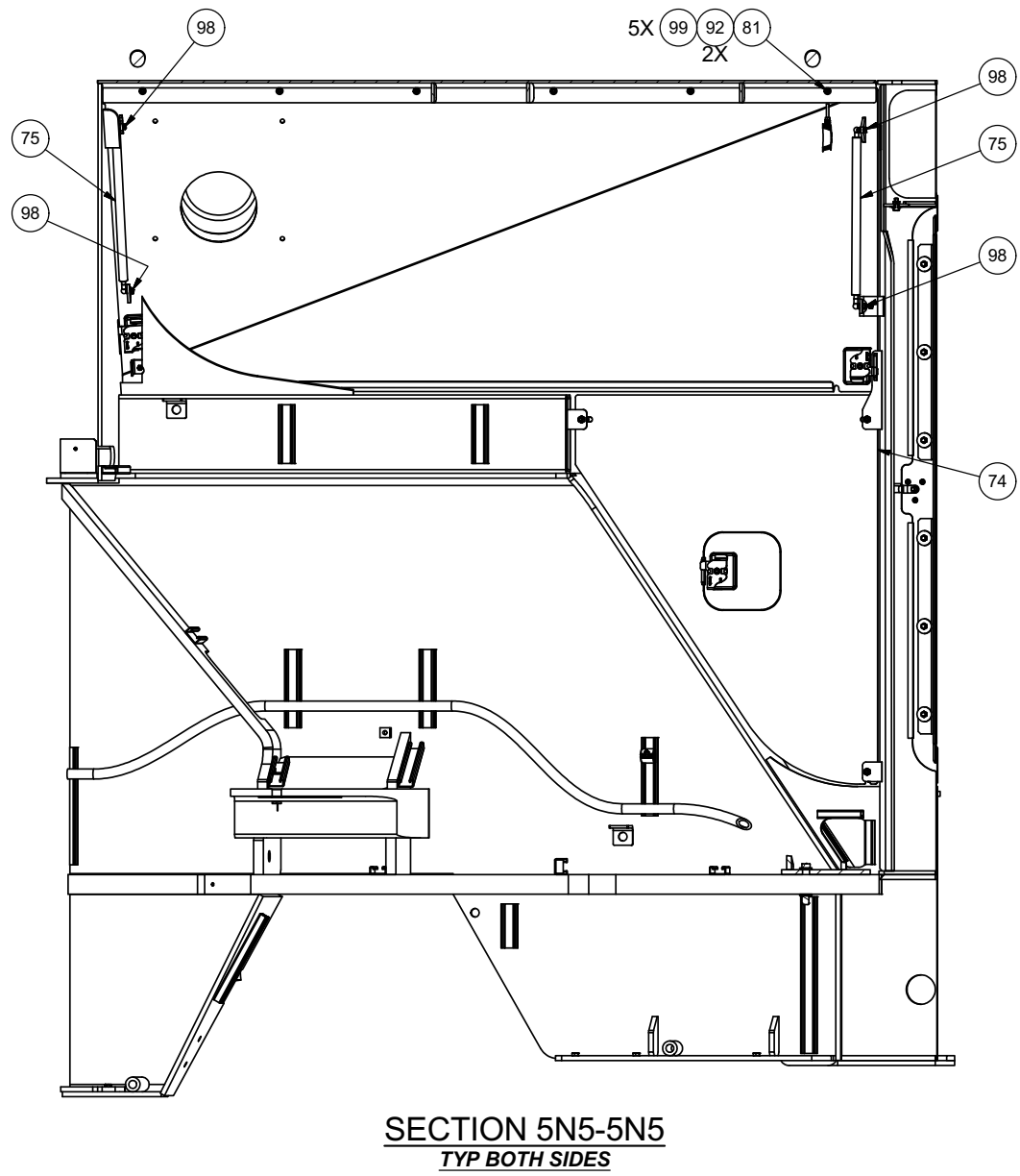
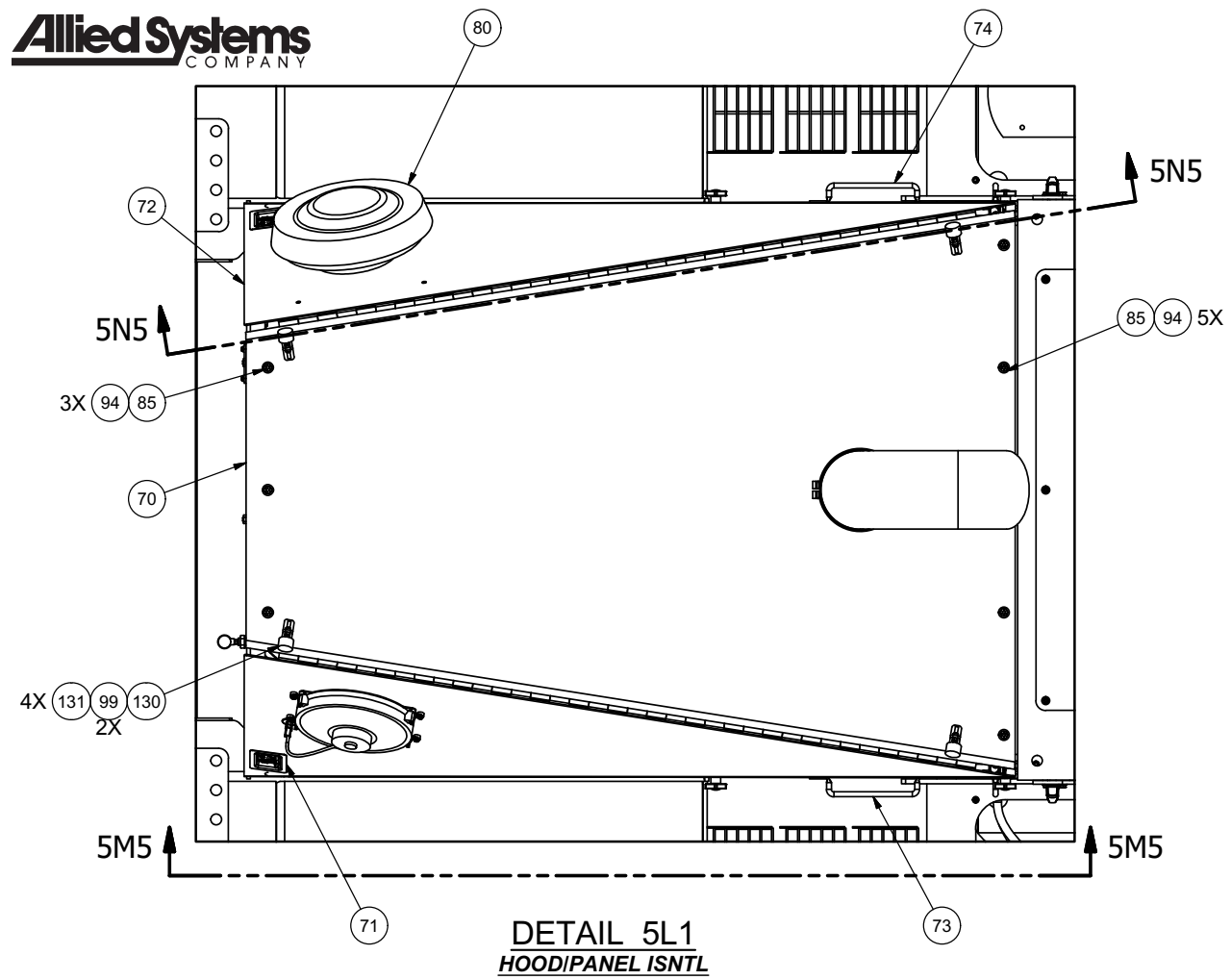
System overview of mechanics

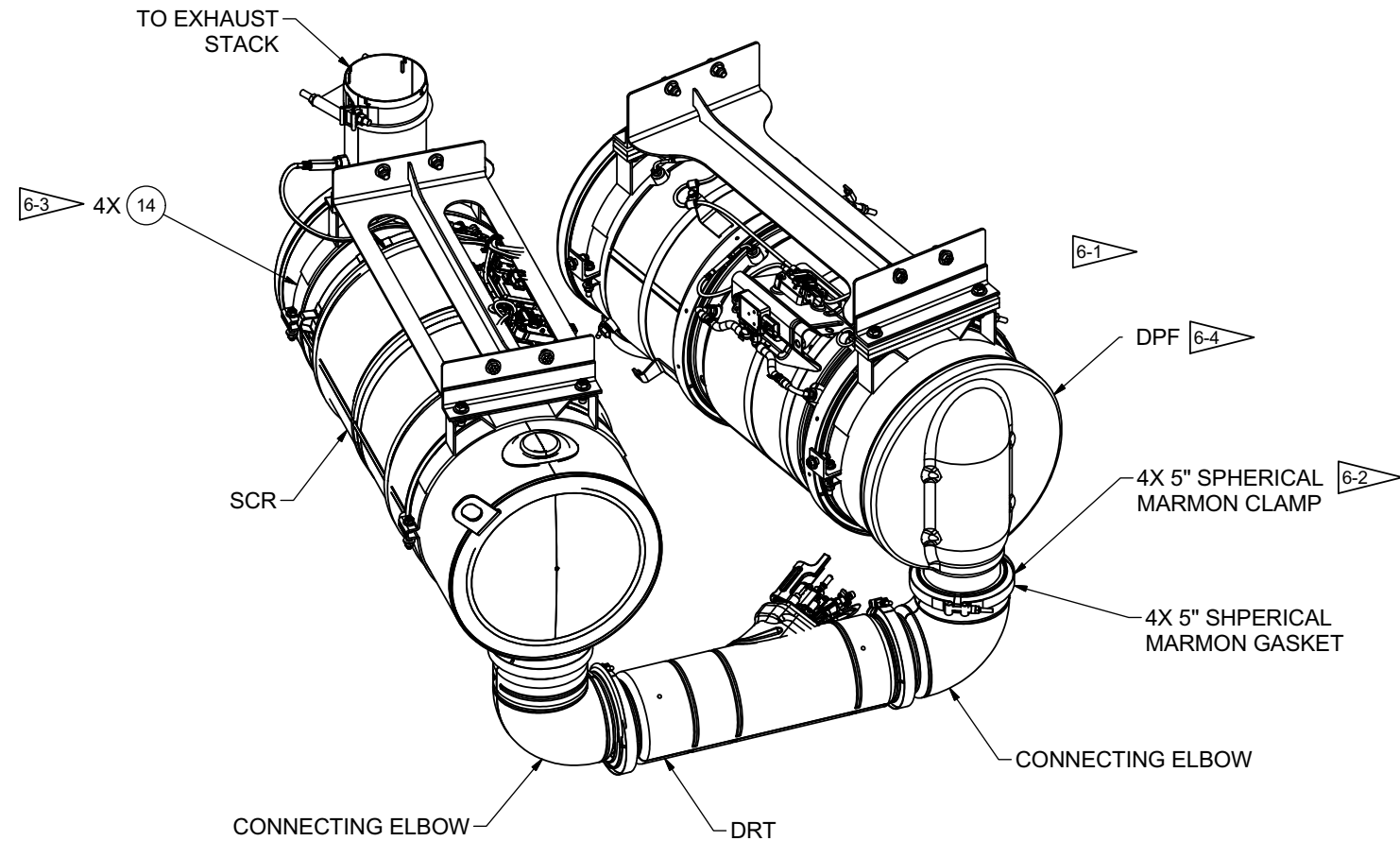
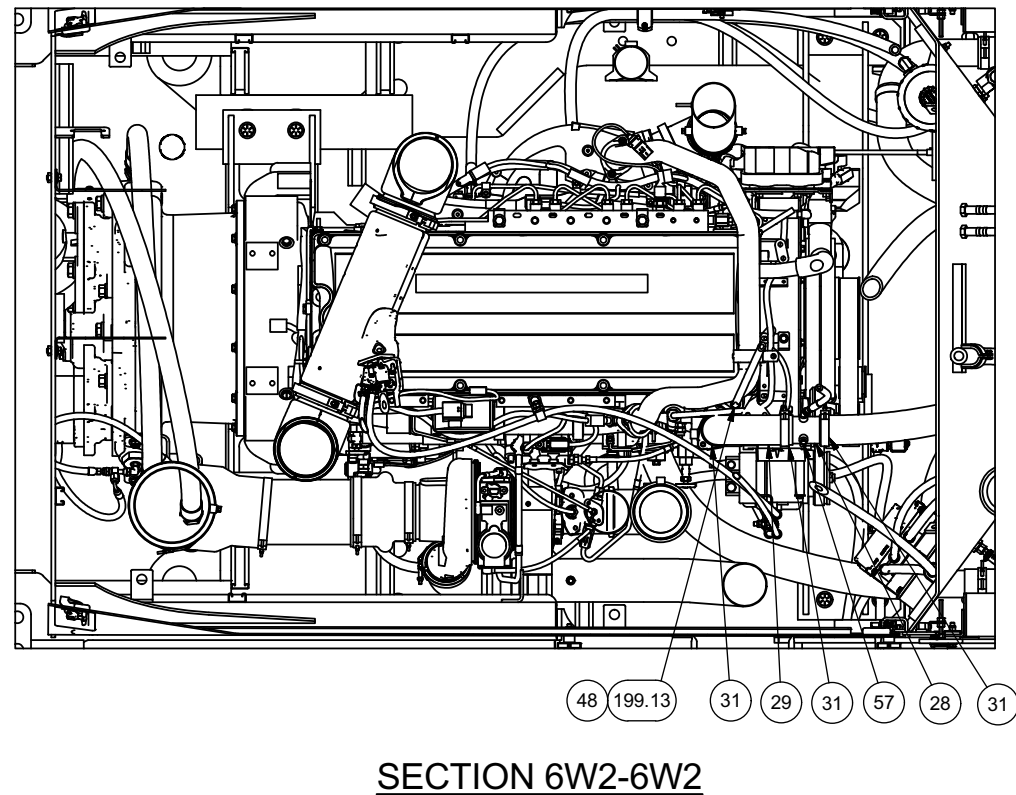
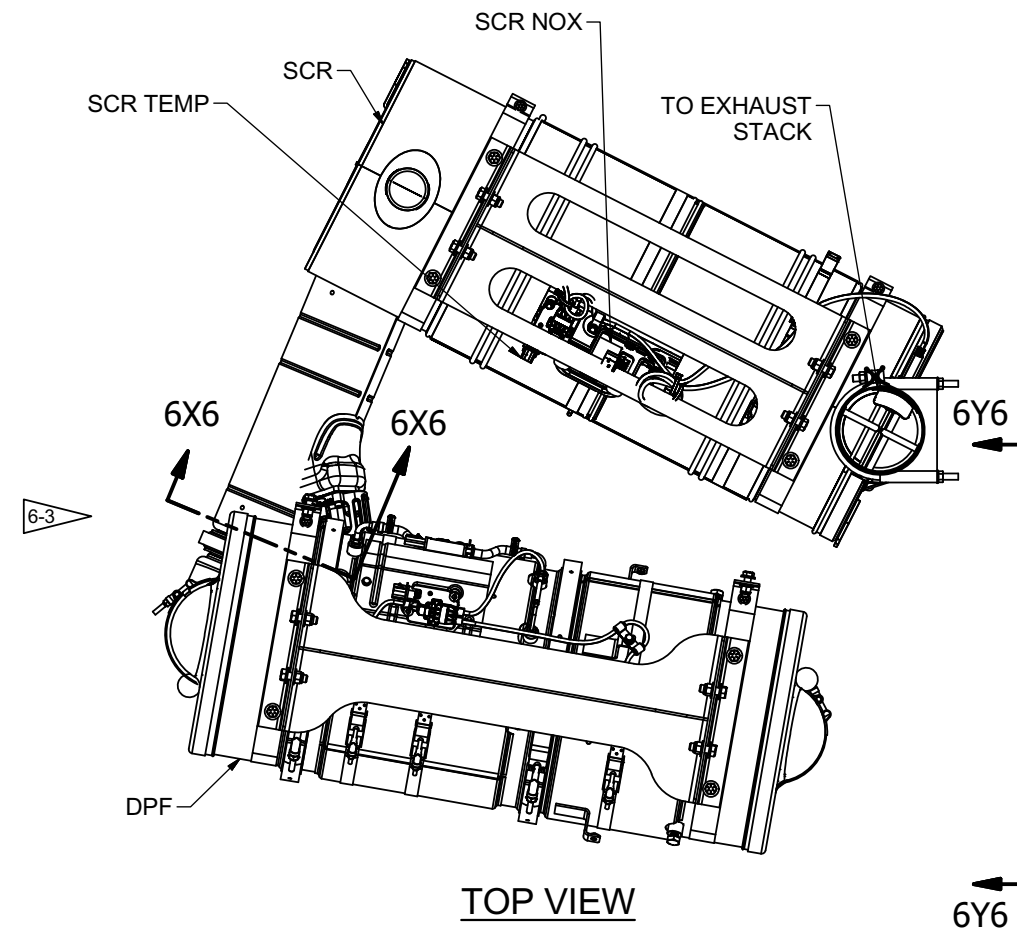
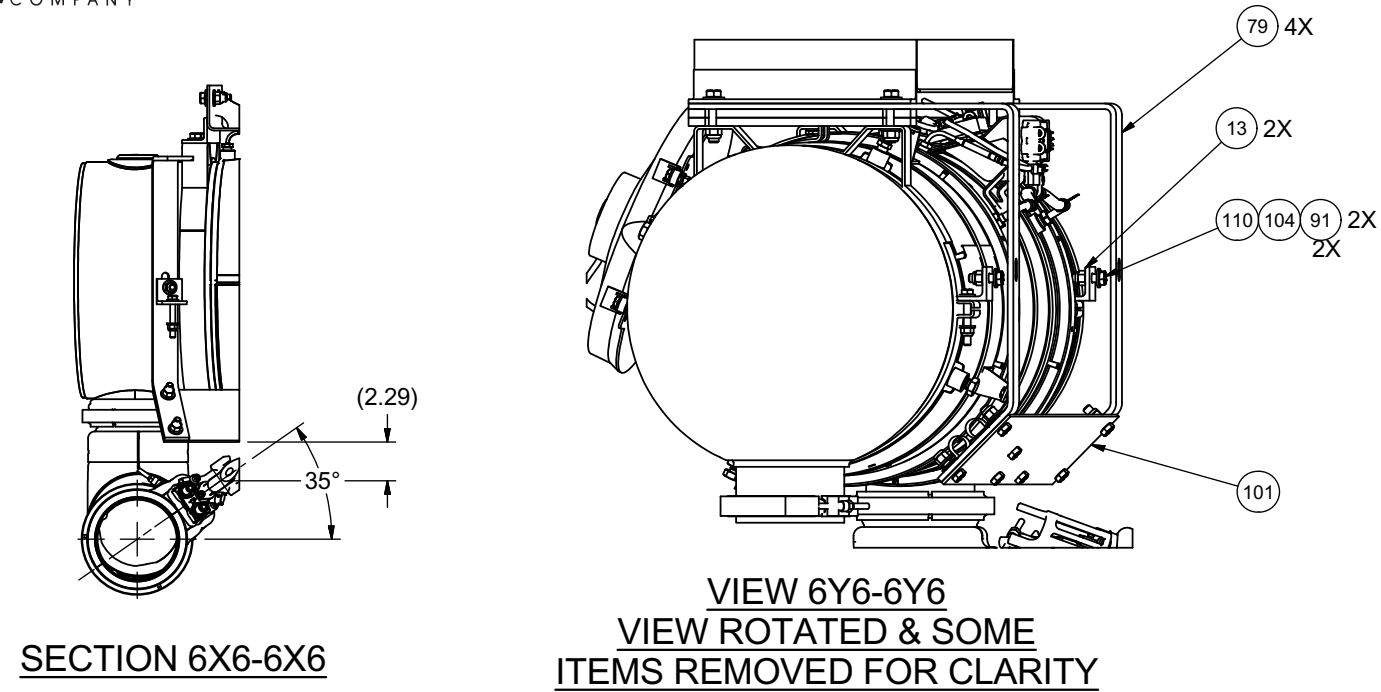
The illustration provides an overview of the component parts of the SCR system.

Item	Component	Supplied from the factory	Fitted by fitter
1	Evaporator with reductant doser ¹	X	X
2	Pressure hose for reductant	X	X
3	Coolant hose for heating the reductant tank and pump		X
4	Coolant valve	X	
5	Reductant return hose	X	X
6	Reductant tank	X	X
7	Coolant hose, return from heating the tank and pump		X
8	NOx sensor in exhaust brake housing/exhaust pipe downstream of the turbocharger with control unit ²	X	
9	Oxidation catalytic converter ³	X	X ⁴
10	Exhaust gas temperature sensor	X	X
11	SCR catalytic converter	X	X
12	NOx sensor on the SCR catalytic converter outlet side with control unit	X	X

- 1. Hydrolysis catalytic converter is used for DC16 Stage III B/Tier 4i.
- 2. Stage IV/Tier 4f only.
- 3. Stage IV/Tier 4f only. Not DC13 085A and DC16.
- 4. Customer option.







NOTES:

- 6-1 AFTERTREATMENT COMPONENTS ARE SHIPPED LOOSE WITH THE ENGINE. REFERENCE DWG 602117 FOR INFORMATION.
- 6-2 TORQUE CLAMPS TO 13.5 +/- 1.5 Nm. (AEB 24.75)
- 6-3 SECURE BAND CLAMP (ITEM 14) TO BOTH DPF AND SCR BY HAND TIGHTENING CLAMP HARDWARE TILL THE CLAMP IS SNUG TO AFTERTREATMENT DEVICES. ONCE SNUG, COMPLETE 1/2 TURN OF HARDWARE. SHELL DEFORMATION OF THE AFTERTREATMENT COMPONENTS TO NOT EXCEED 1mm (.04 INCHES) PER AEB 24.75.
- 6-4 ROTATE OUTLET OF DPF 180° SO THAT IT IS PARALLEL WITH INLET.