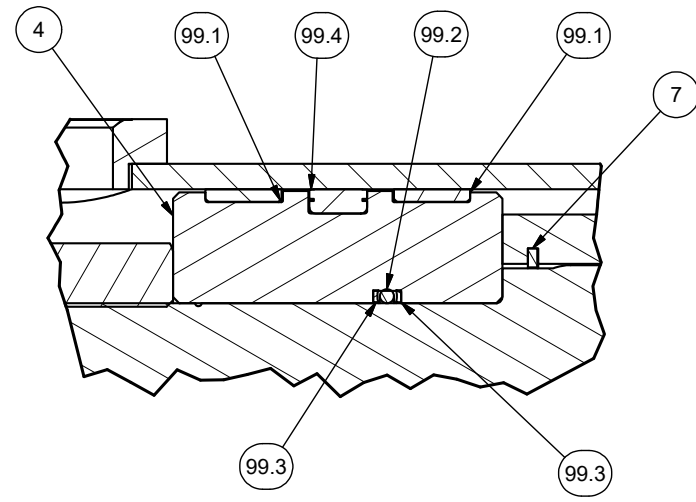


---

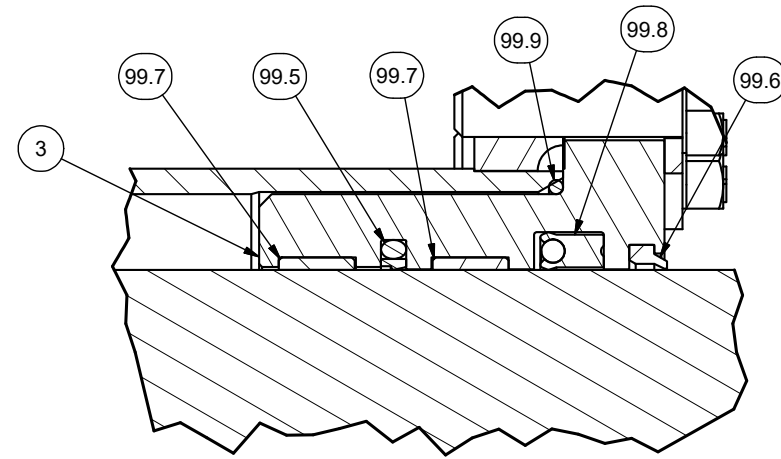
Dump Cylinder Assembly

## Dump Cylinder Assembly

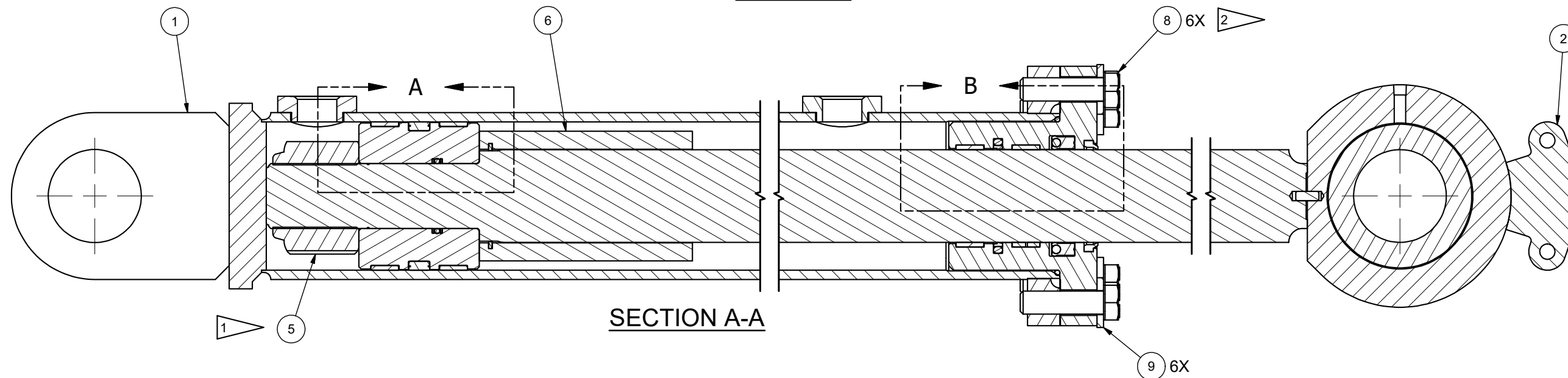
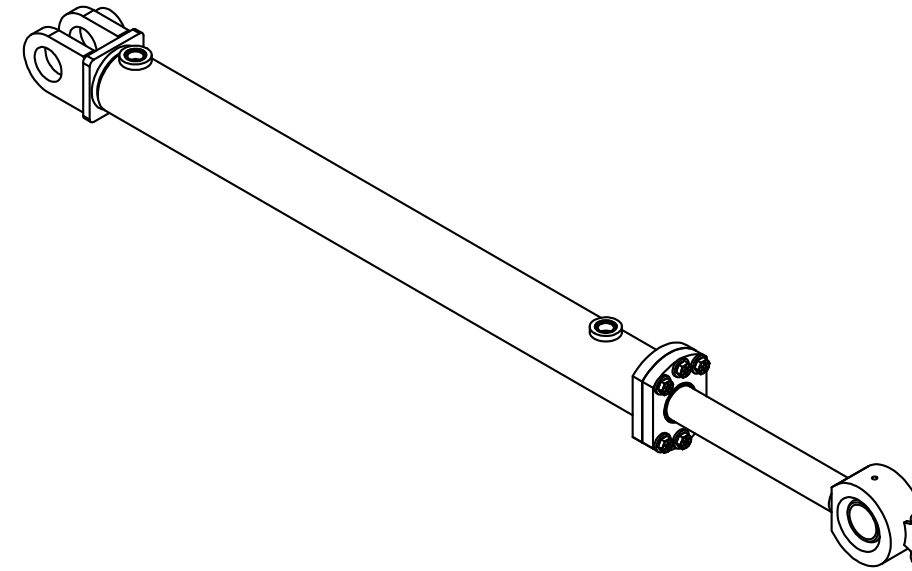
Item	Part No.	Qty	Description	Item	Part No.	Qty	Description
	<b>601047</b>		<b>Dump Cylinder Assembly</b>				
1	601126	1	. Barrel	99	601132	1	. Packing Kit
2	601127	1	. Stem	99.1	70384.0400	2	.. Wear Ring
3	601128	1	. Gland	99.2	Y098629-224	1	.. O-Ring
4	601129	1	. Piston	99.3	227787	2	.. Backup Ring
5	219929	1	. Nut	99.4	69770.0400	1	.. Seal
6	601130	1	. Spacer Cylinder	99.5	69768.0250	1	.. Seal
7	12964W	1	. Snap	99.6	20545	1	.. Wiper Ring
8	214009	6	. Capscrew	99.7	70385.0250	2	.. Wear Ring
9	234271	6	. Washer	99.8	251514	1	.. Seal
				99.9	Y098629-242	1	.. O-Ring



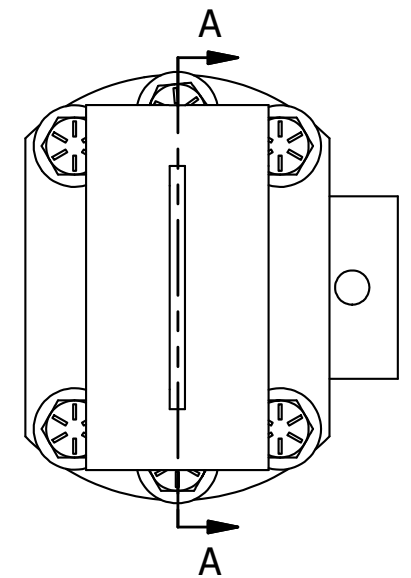
**DETAIL A**



**DETAIL B**



**SECTION A-A**



**NOTES:**

- 1 TORQUE ITEM 5 TO 2,000 FT-LBS.
- 2 REMOVED DIRT, LOOSE SCALE, BURRS, AND PAINT FROM THE MATING SURFACES OF BOLTED JOINTS. USE MEDIUM STRENGTH BLUE LOCTITE 242.