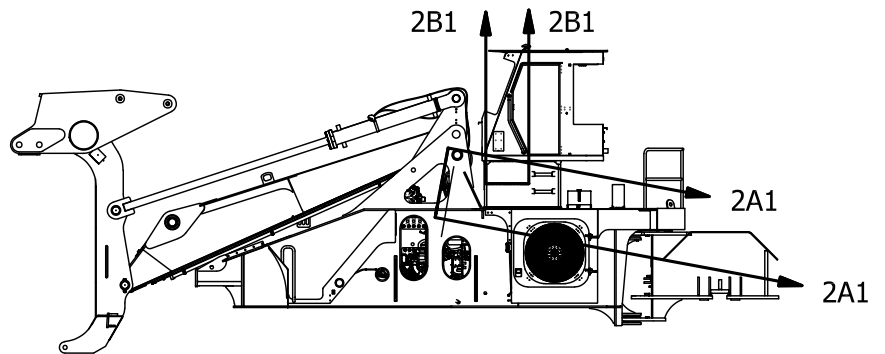
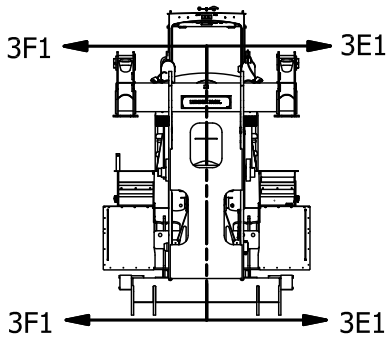
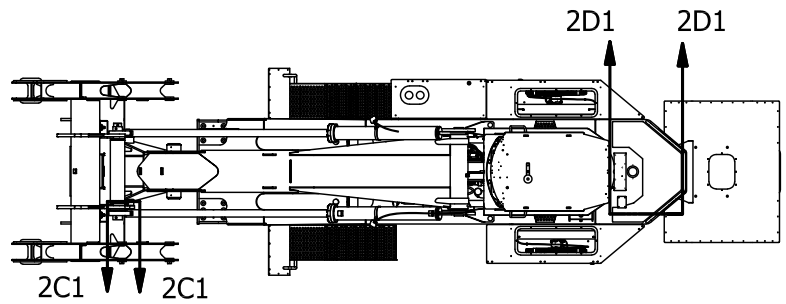
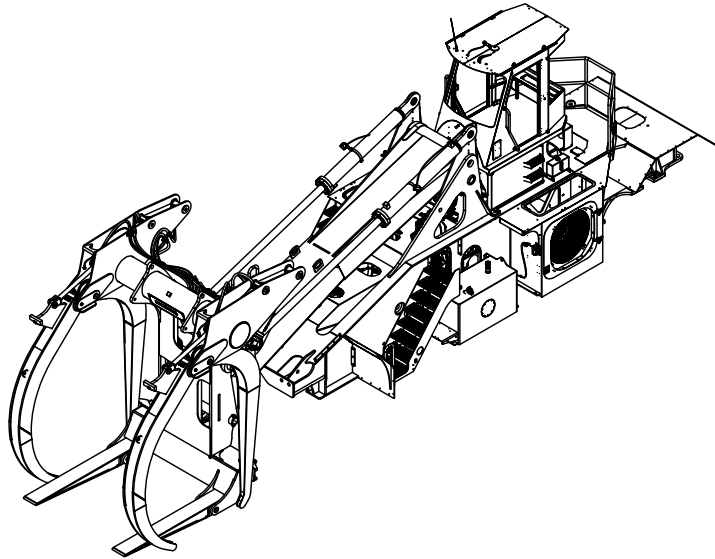

Electrical System - CAT Tier 4

Electrical System - CAT Tier 4

Item	Part No.	Qty	Description	Item	Part No.	Qty	Description
	600993		Electrical System - CAT Tier 4				
1.1	254837	2	. Module, Expansion	1.16	296417W	7	. Washer
1.2	79603	1	. Module, Expansion	1.17	292501W	2	. Capscrew
1.3	598867	1	. Wire Harness, "A"	1.18	302399W	1	. Locknut
1.4	598868	1	. Wire Harness, "B"	1.19	296420W	9	. Washer
	237172	1	. . Resistor, 1K Ohm	1.20	293628W	3	. Capscrew
	2509736	1	. . Fuse, 5Amp	1.21	302401W	3	. Locknut
	594743	1	. . Capacitor, 3 Pin	1.22	293631W	3	. Capscrew
1.5	601860	1	. Wire Harness, "C"	1.23	595326	A/R	. Mount, Tack
	594742	3	. . Capacitor, 2 Pin	1.24	249329	A/R	. Cable Tie
1.6	598870	1	. Wire Harness, RH XA2	1.25	R13811617	4	. Capscrew
	241893	1	. . Resistor, 18K Ohm	1.27	65290	2	. Machine Screw
	597769	1	. . Resistor, 125 Ohm, 5 Watt	1.28	18423W	4	. Washer
1.7	598871	1	. Wire Harness, XC23	1.29	00109451	4	. Screw, Machine
	237172	3	. . Resistor, 1K Ohm	1.30	73969	2	. Cable Tie
1.8	598872	1	. Wire Harness, LH XA2	1.31	593903	1	. Nut, Channel
	241893	1	. . Resistor, 18K Ohm	1.32	CLP0100200	1	. Clamp
	600615	1	. . Relay, Mini ISO	1.33	211790	A/R	. Spiral Wrap
1.9	* 598877	1	. Chassis Fuse Panel	1.34	219394	A/R	. Loom, Auto
1.10	* 600498	1	. Cat T4 Eng Harness Install	1.35	242601	4	. Cable Tie (Black)
1.11	* 600499	1	. Wire Harness Battery Install	1.36	605935	2	. Grease Guard, XA2
1.13	598644	3	. Linear Position Sensor	1.37	605959	2	. Nut, Channel
	598911	1	. . Kit, Spherical Rod Ends	1.38	R13803057	2	. Clip, Insulated
1.14	906182	2	. Switch, Rocker	1.39	R13801791	2	. Capscrew
1.15	237578	1	. Washer, Fender	1.40	R13802914	4	. Washer

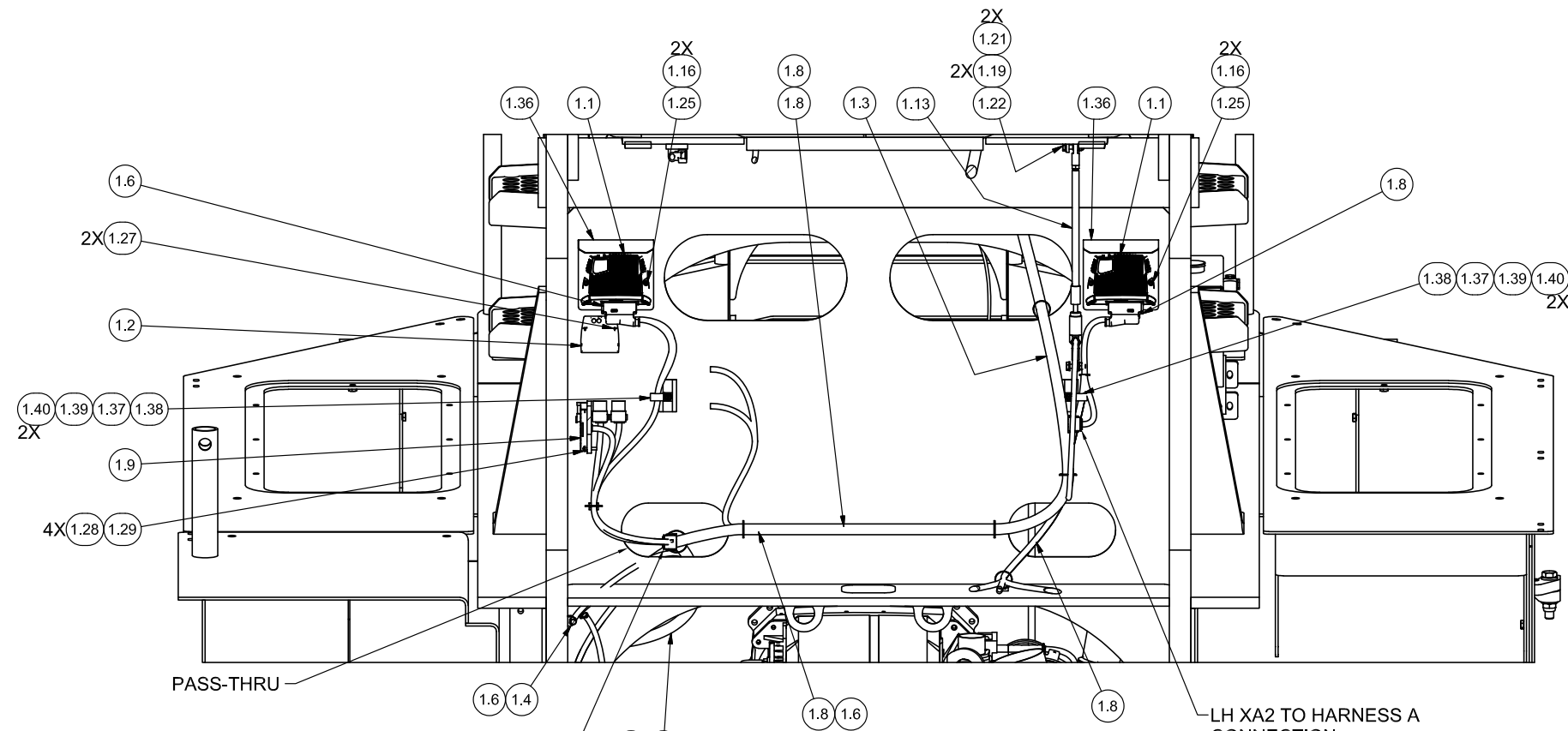
* See Separate Coverage

Electrical System - CAT Tier 4

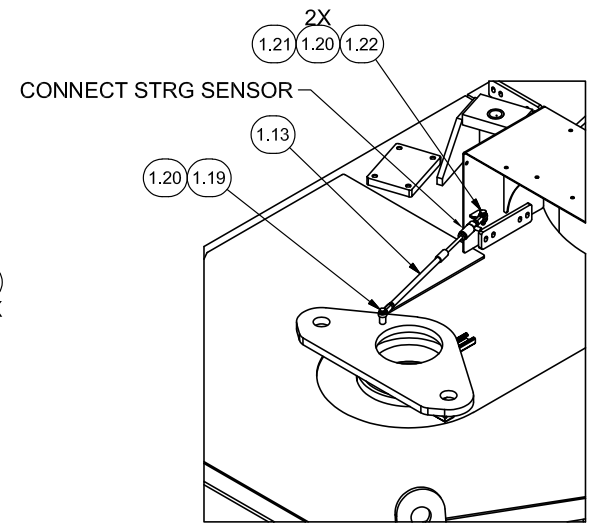


NOTES:

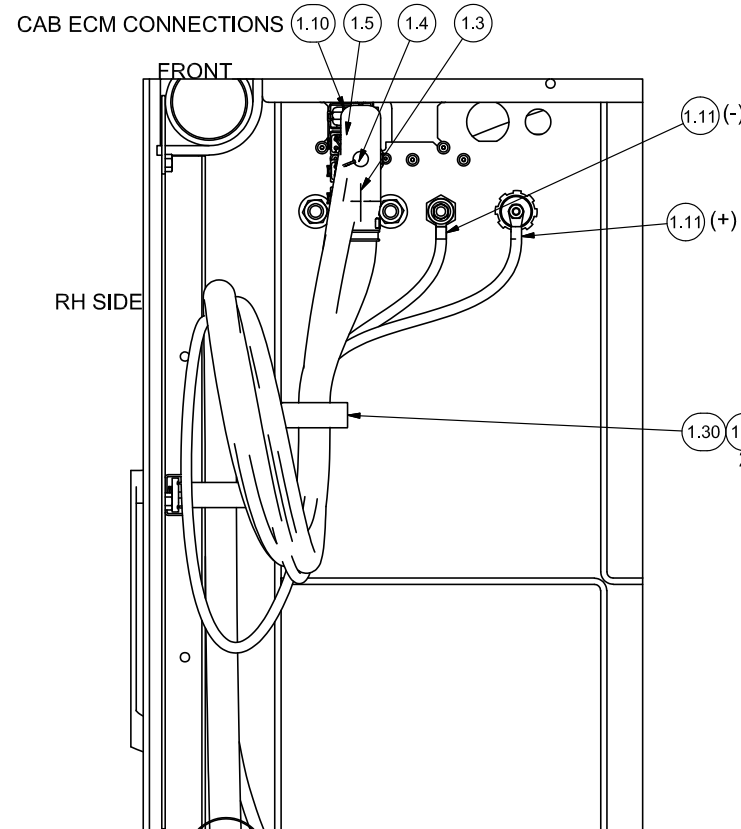
2. ROUTE WIRE HARNESS AS SHOWN. DEVIATION FROM THIS ROUTING WILL AFFECT HARNESS LENGTHS.
- WIRE HARNESS SHALL BE SUPPORTED EVERY 18 INCHES AS REQUIRED WITH TACK MOUNTS AND CABLE TIES.
- WHEN SECURING WIRES HARNESS TO TACK MOUNT, RUN CABLE TIE THROUGH BOTH TACK MOUNT LOOPS AND STRADDLE HARNESS IN TACK MOUNT.
- WHEN NOT SECURING HARNESS TO TACK MOUNT, USE THE FIRST LOOP TO SECURE CABLE TIE TO SUPPORT OBJECT, THEN USE THE SECOND LOOP TO SECURE THE WIRE HARNESS.
- ADD SPIRAL WRAP TO WIRE HARNESSES AS NEEDED TO ELIMINATE POTENTIAL FRICTION BETWEEN COMPONENTS AND ENHANCE ROUTING. (EX: AT PASS THROUGH)



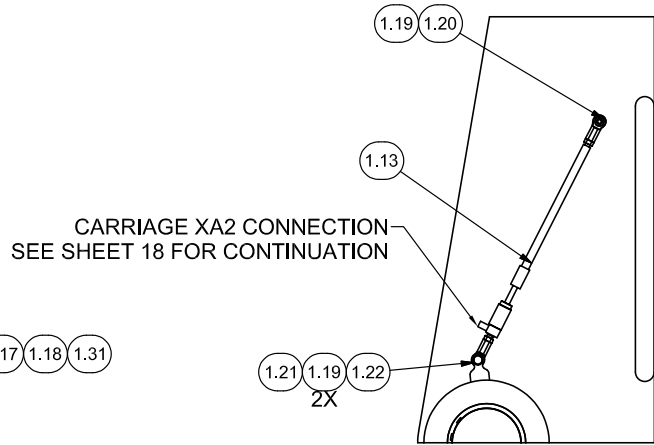
**SECTION 2A1-2A1
VALVE PLATE AREA**



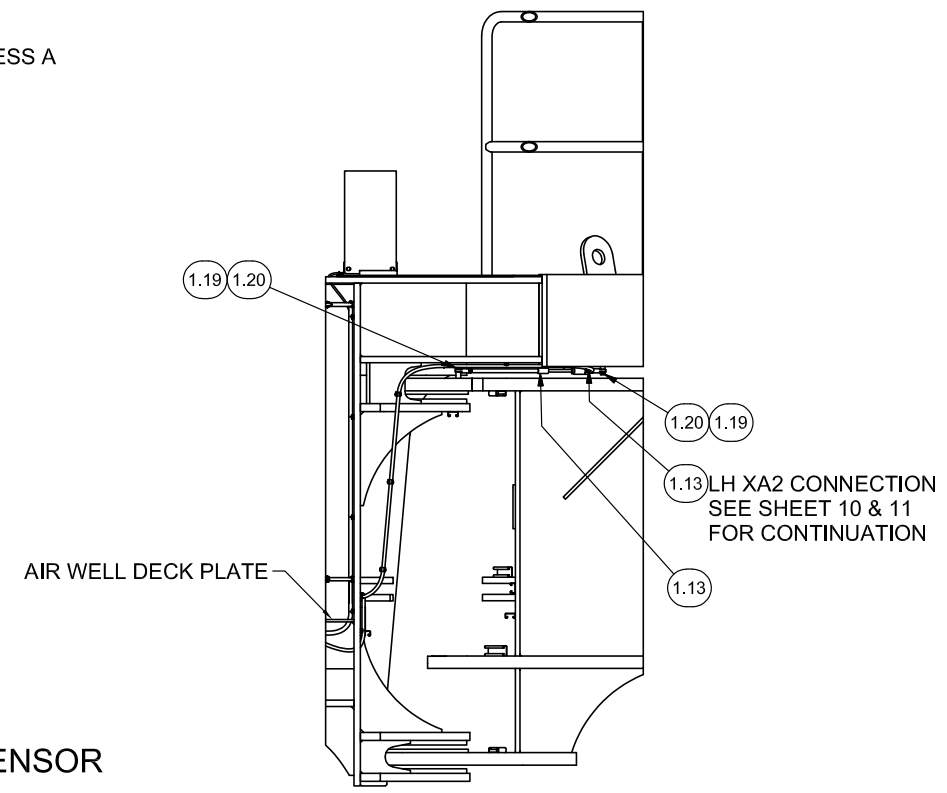
**2WD STRG POSITION SENSOR
SOME PARTS REMOVED FOR CLARITY
COIL AND STOW EXTRA CABLE
UNDER AIR WELL DECK**



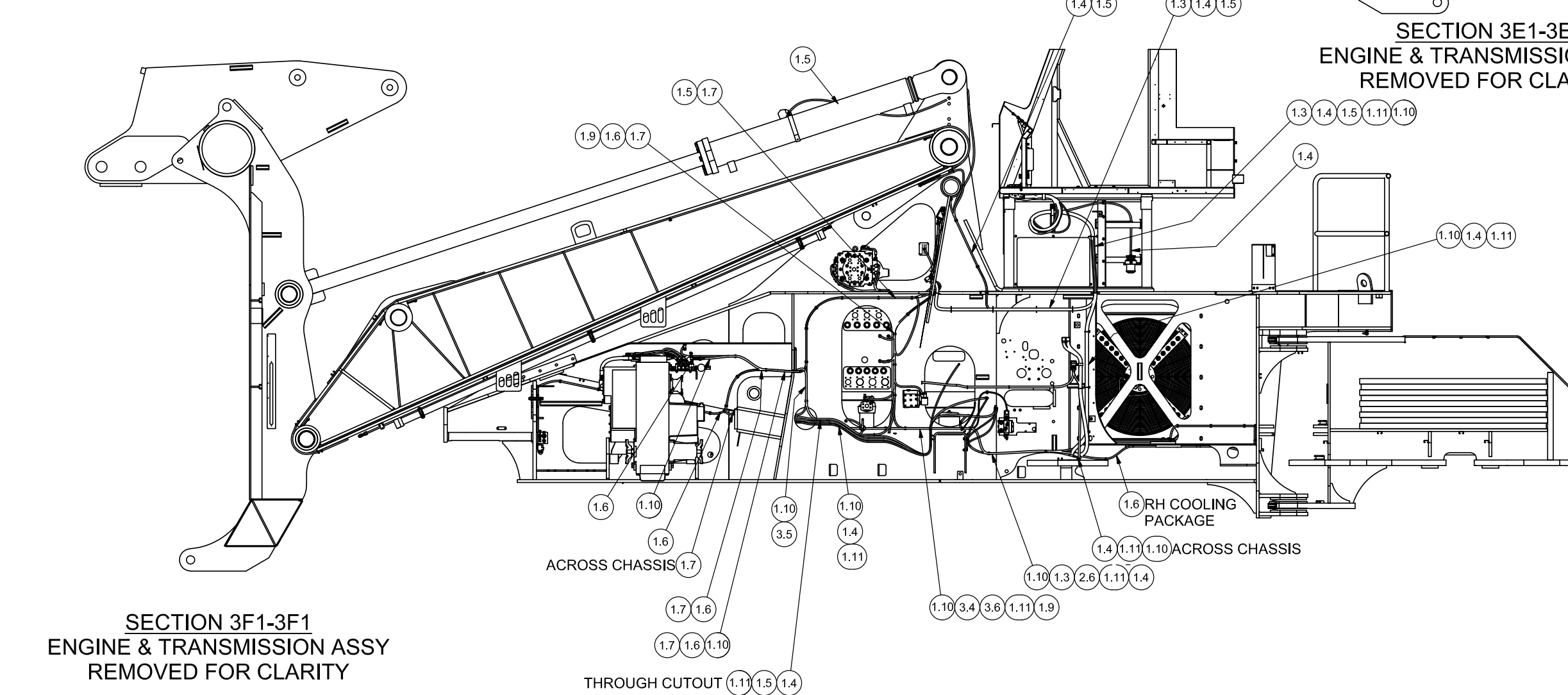
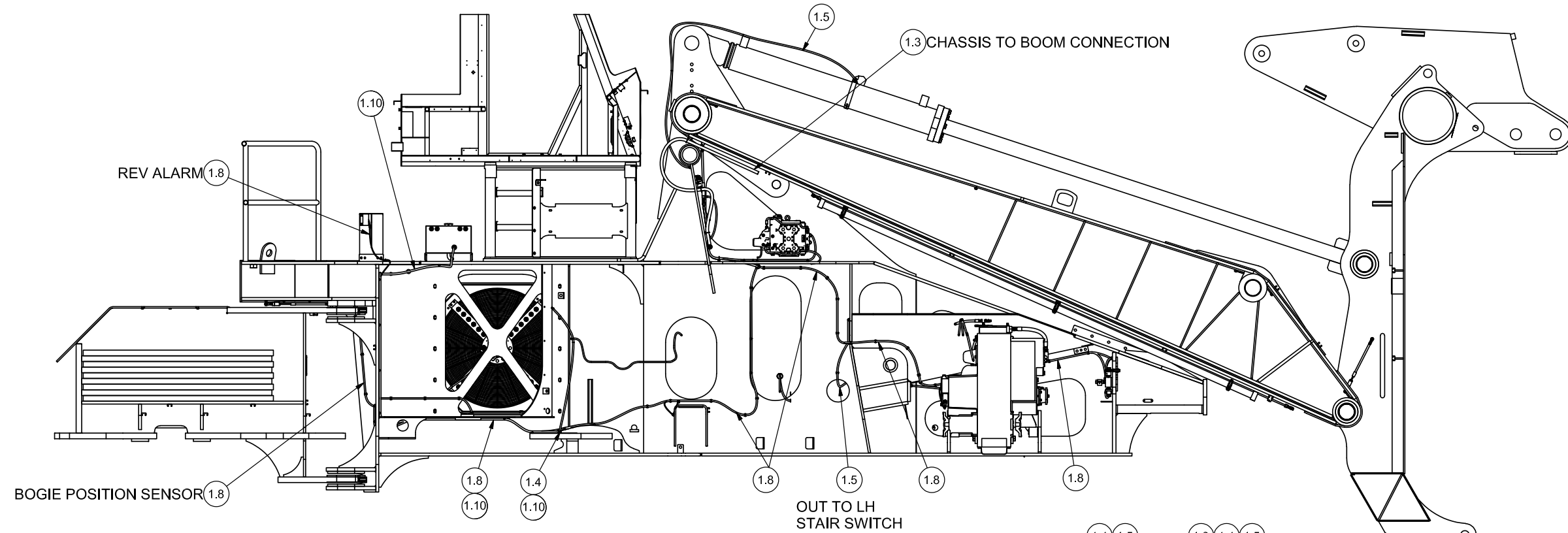
**SECTION 2B1-2B1
CAB CONNECTIONS
LOOKING AT BOTTOM OF CAB**



**SECTION 2C1-2C1
BOOM CARRIAGE POSITION SENSOR**

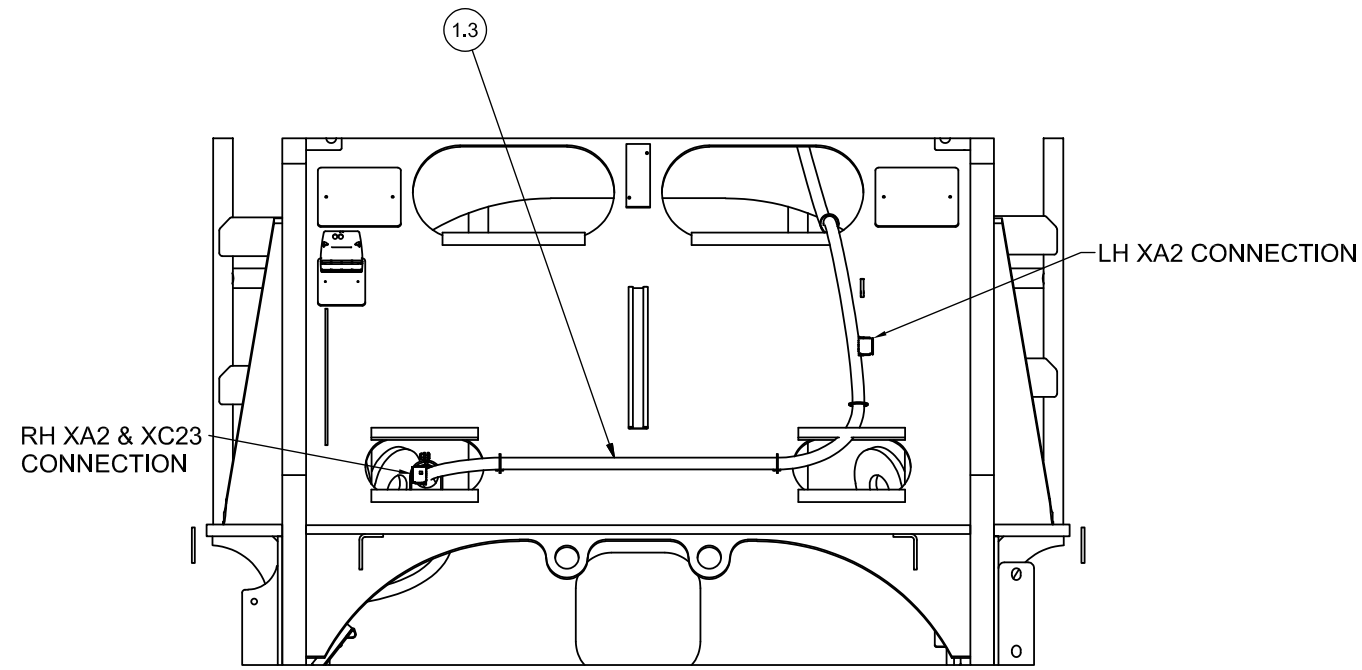


**SECTION 2D1-2D1
CHASSIS BOGIE POSITION SENSOR
FOR 4WD UNIT**

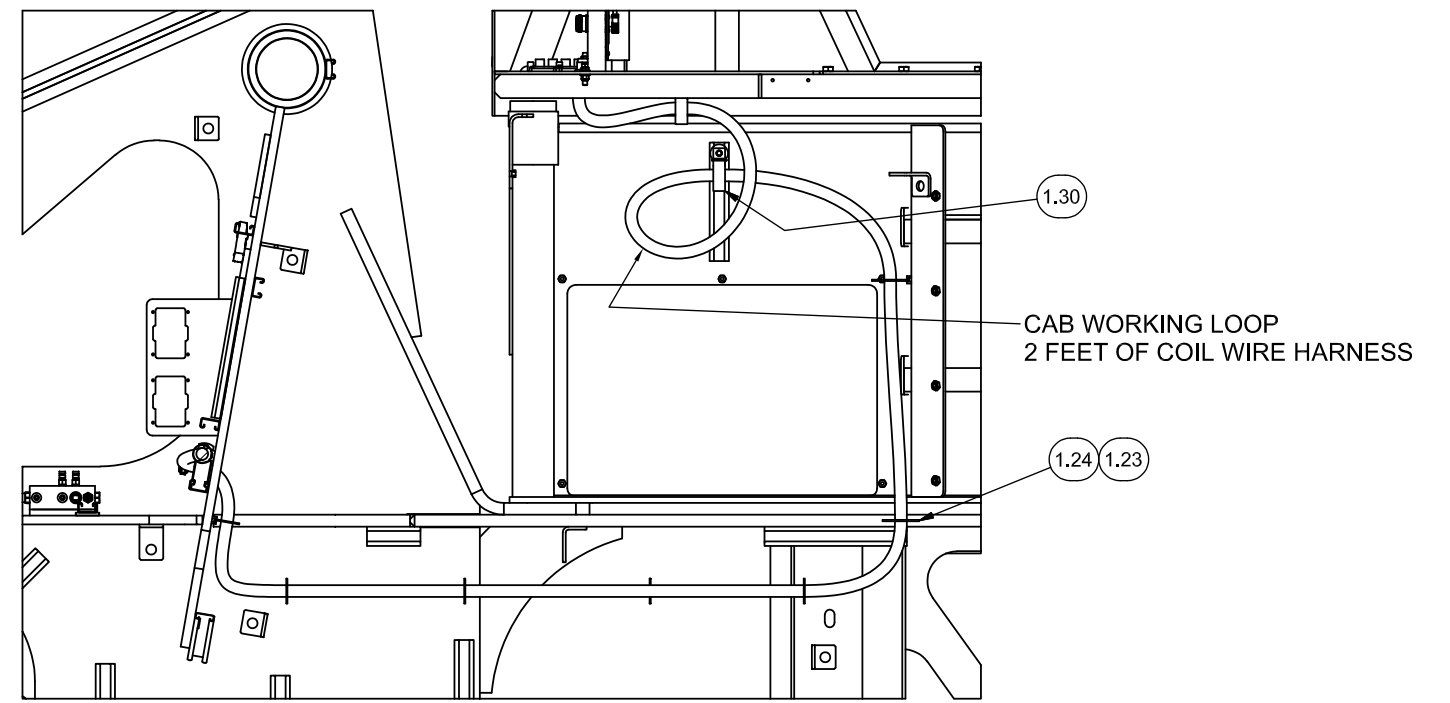


SECTION 3E1-3E1
ENGINE & TRANSMISSION ASSY
REMOVED FOR CLARITY

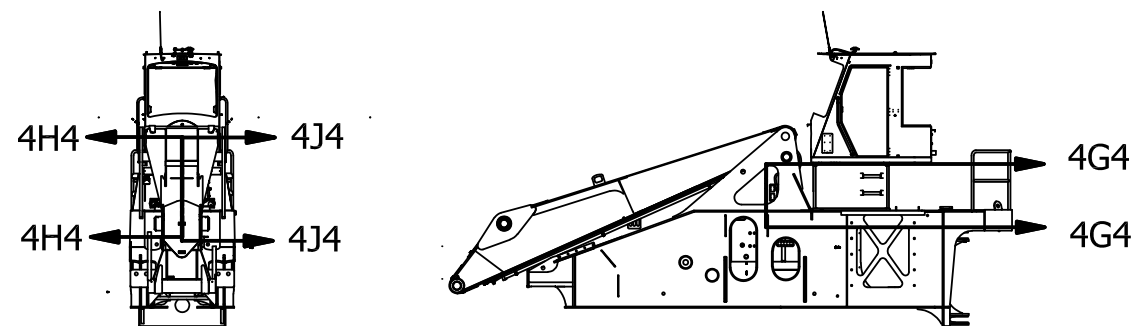
SECTION 3F1-3F1
ENGINE & TRANSMISSION ASSY
REMOVED FOR CLARITY



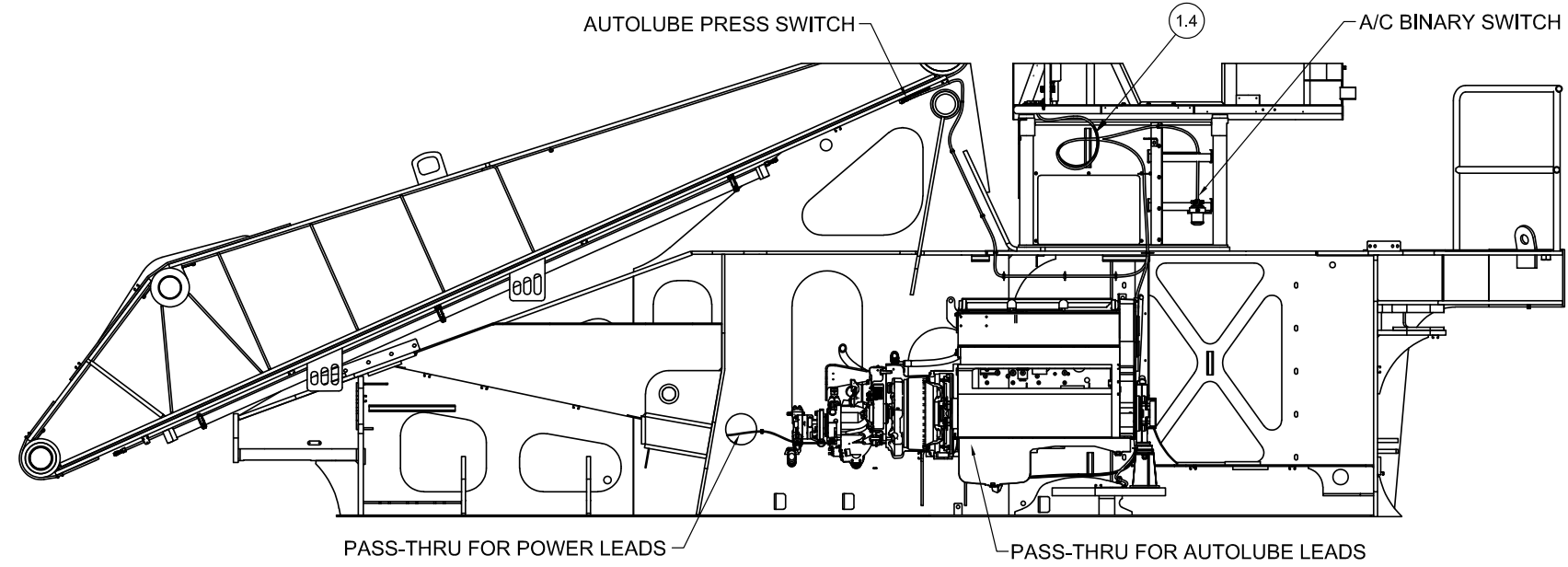
SECTION 4G4-4G4



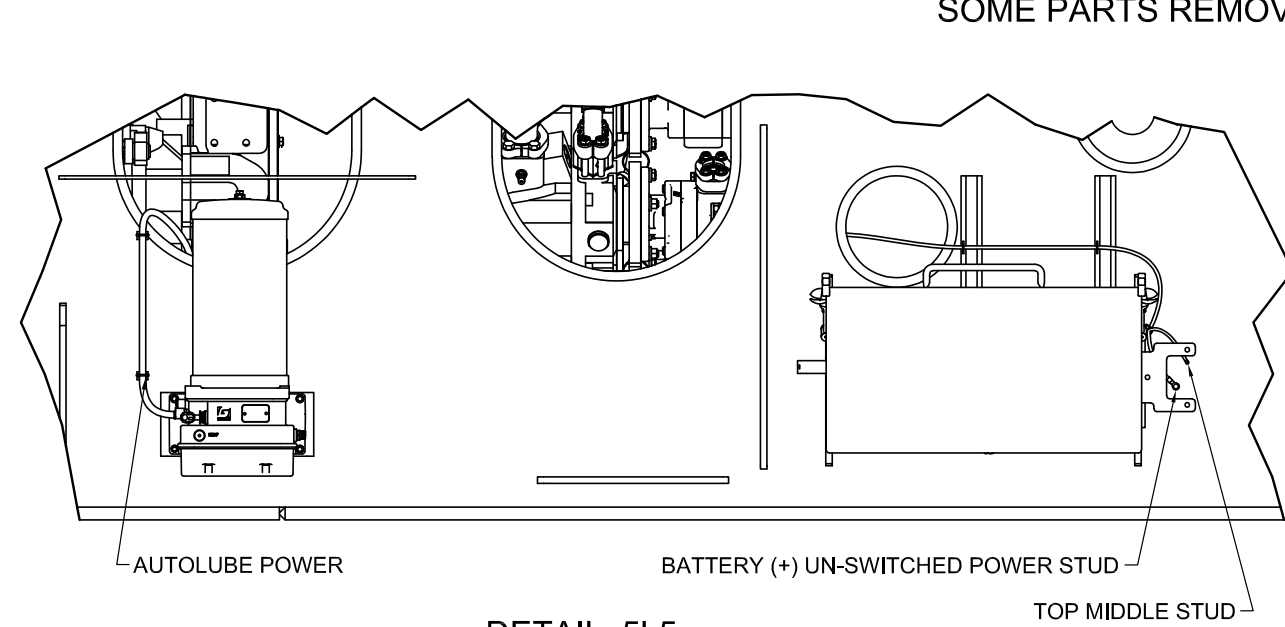
SECTION 4H4-4H4



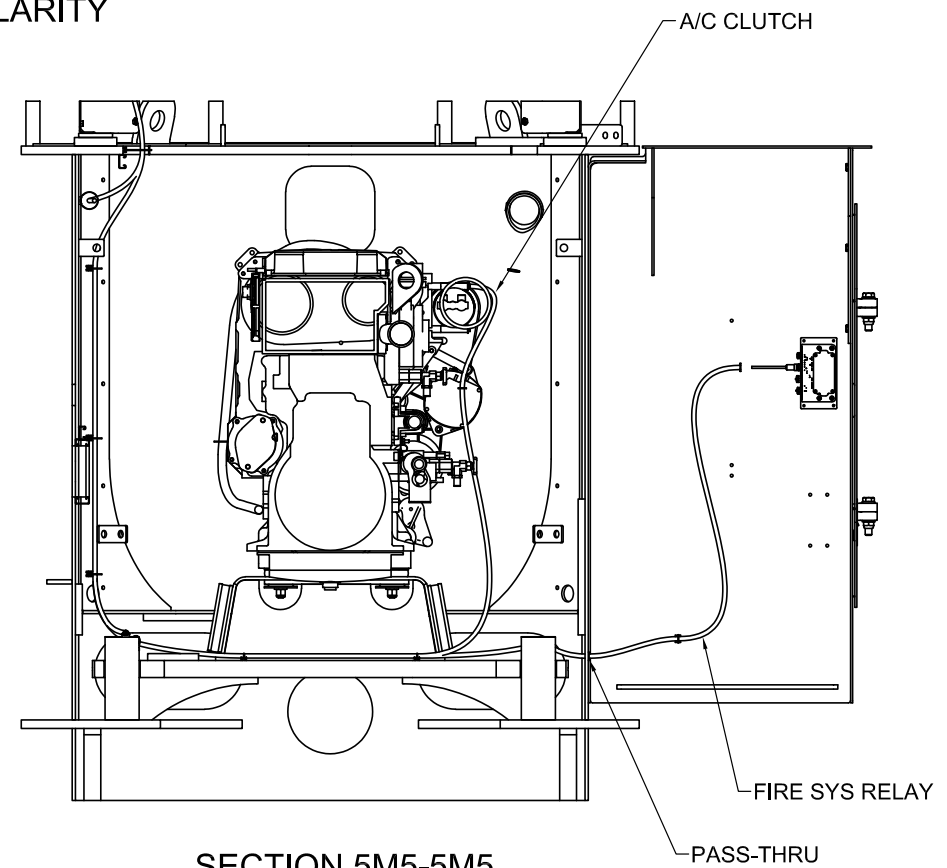
SECTION 4J4-4J4



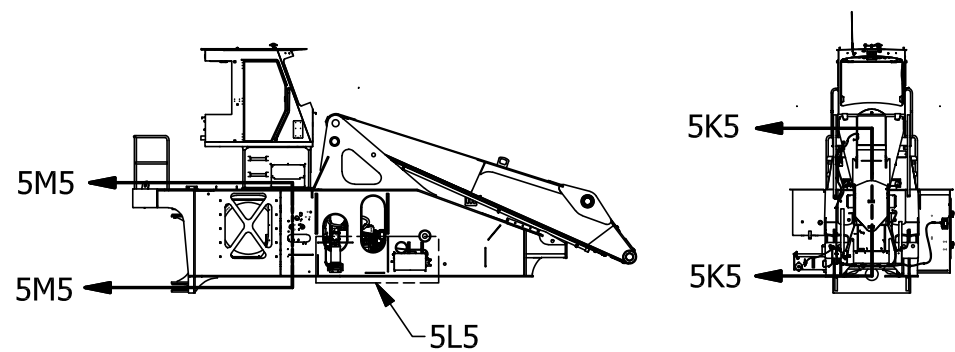
SECTION 5K5-5K5
SOME PARTS REMOVED FOR CLARITY

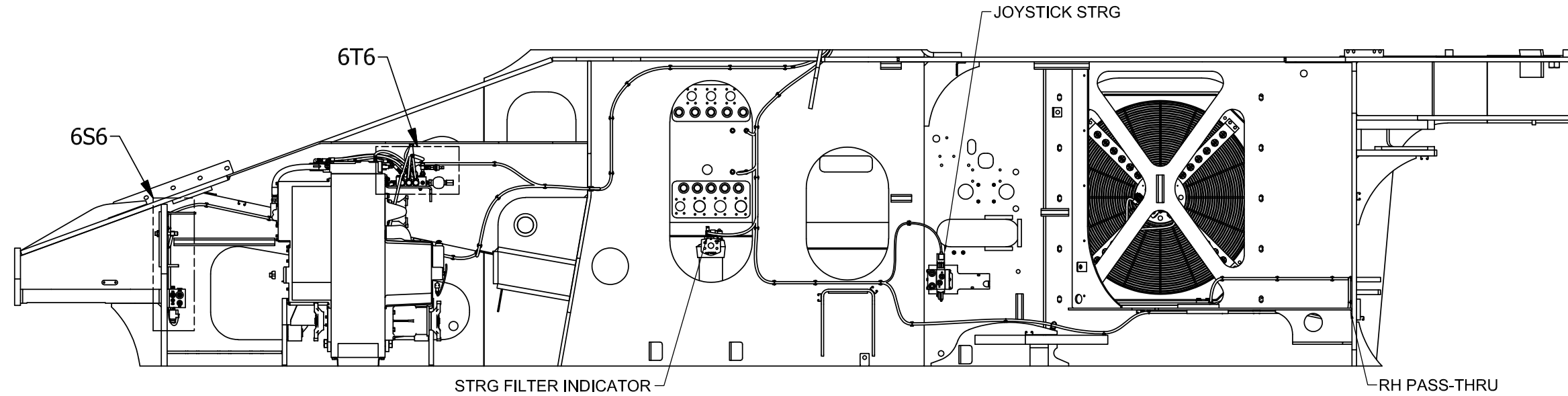


DETAIL 5L5
GREASE SYS & POWER

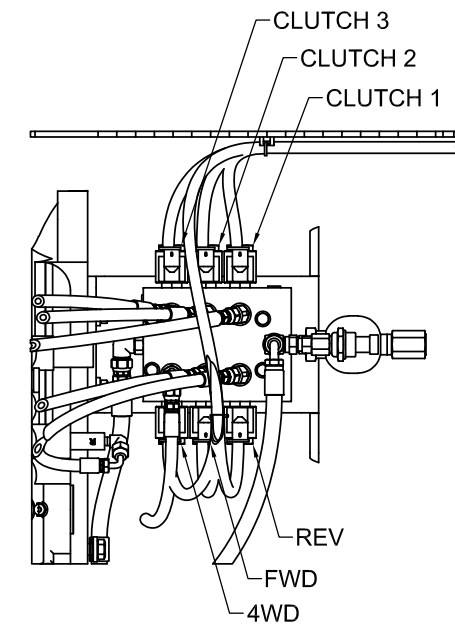
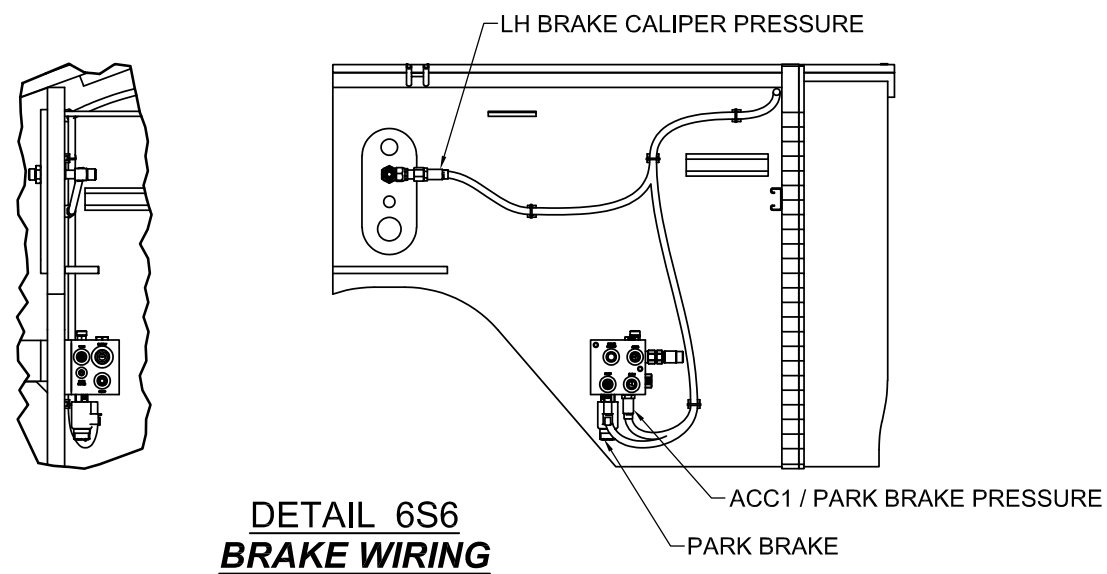


SECTION 5M5-5M5
A/C CLUTCH & FIRE RELAY WIRING

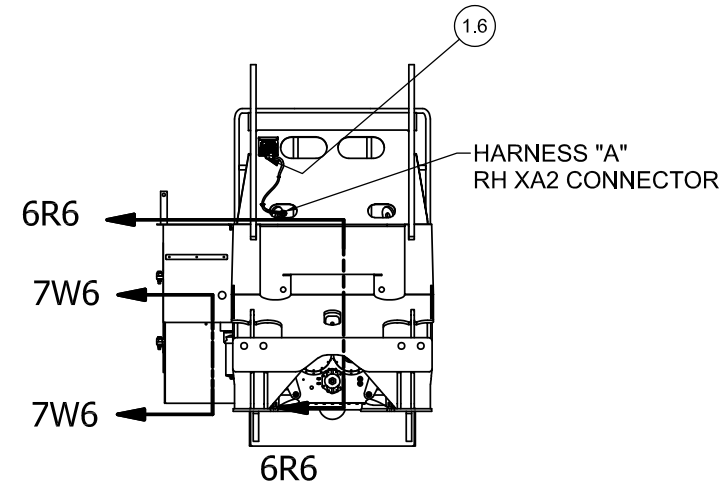
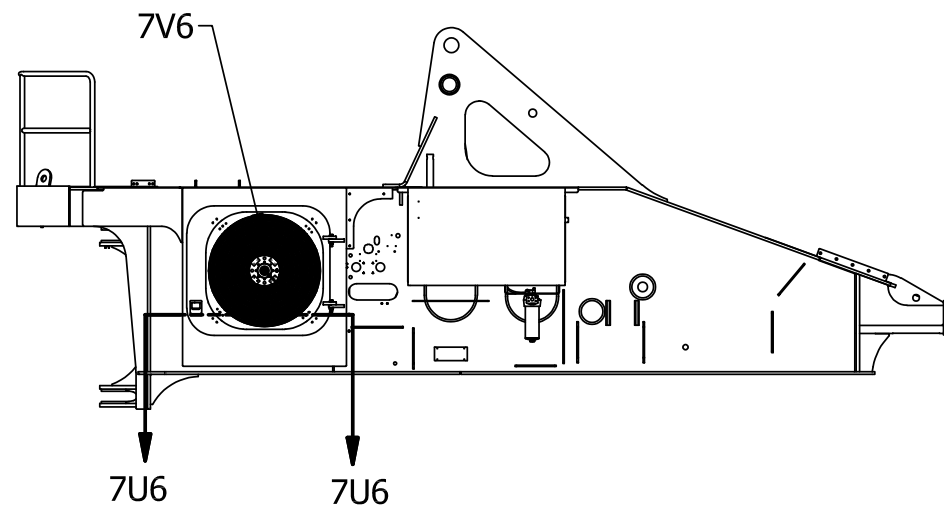




SECTION 6R6-6R6



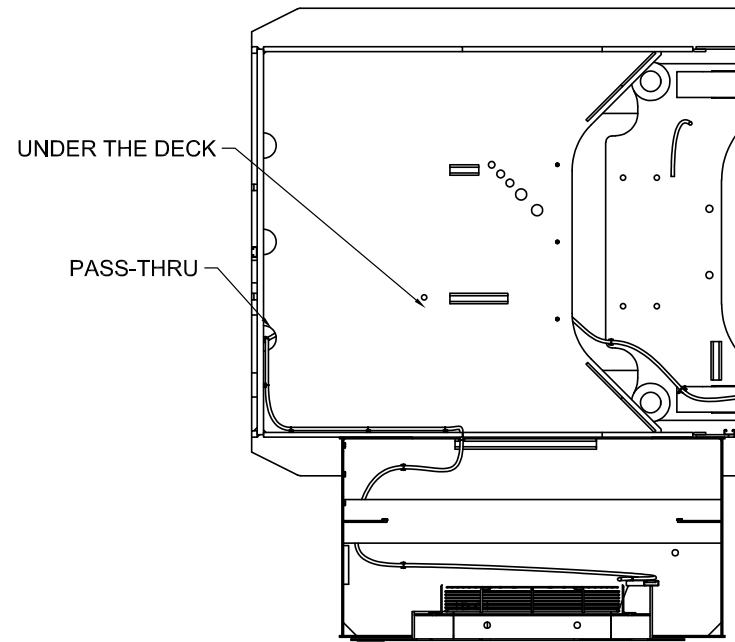
**DETAIL 6T6
TRANSMISSION SHIFT MANIFOLD WIRING**



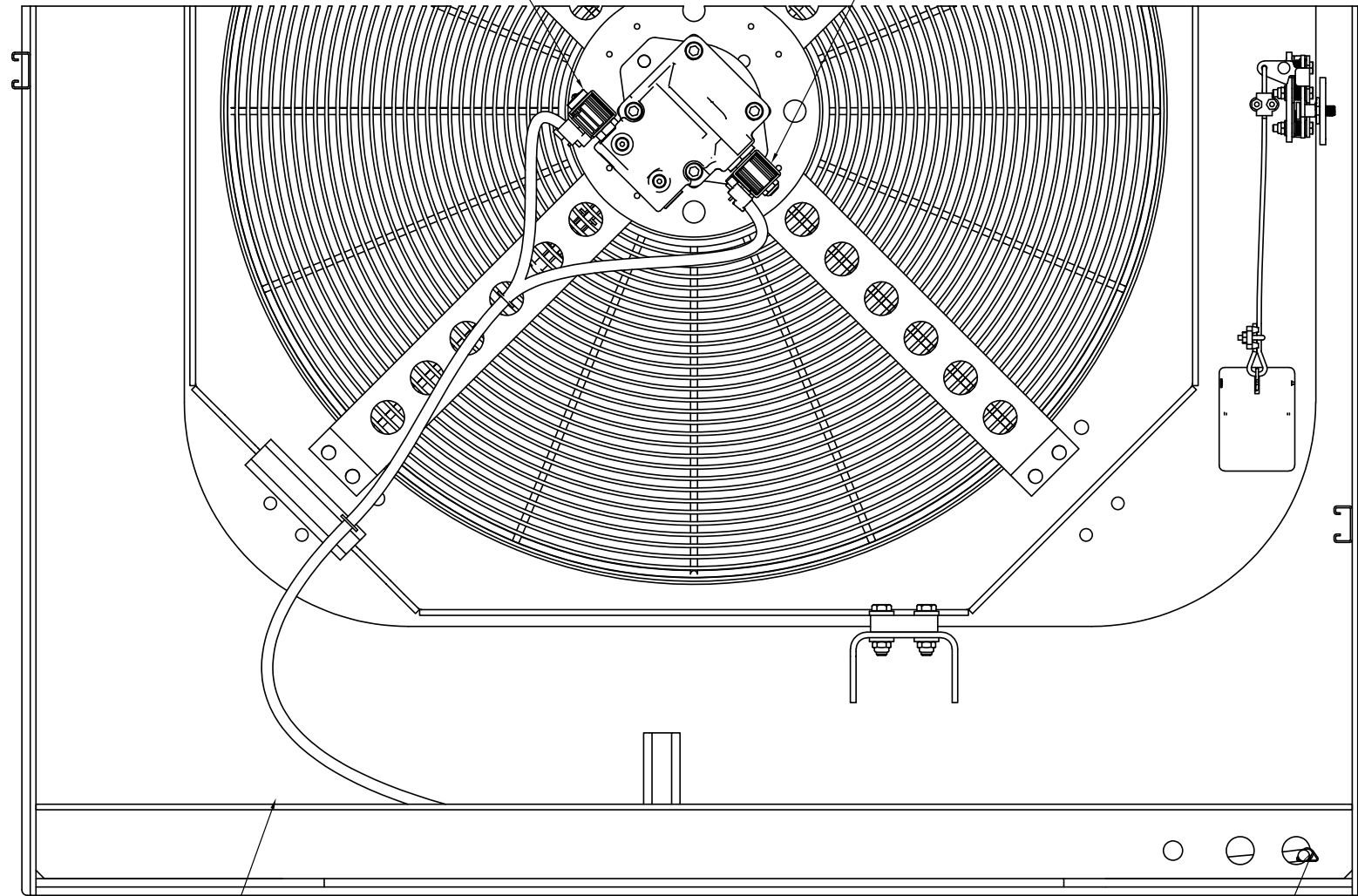
WIRE HARNESS, RH XA2

PROP COIL
TIE CONNECTOR TO FAN GUARD

REV COIL
TIE CONNECTOR TO FAN GUARD



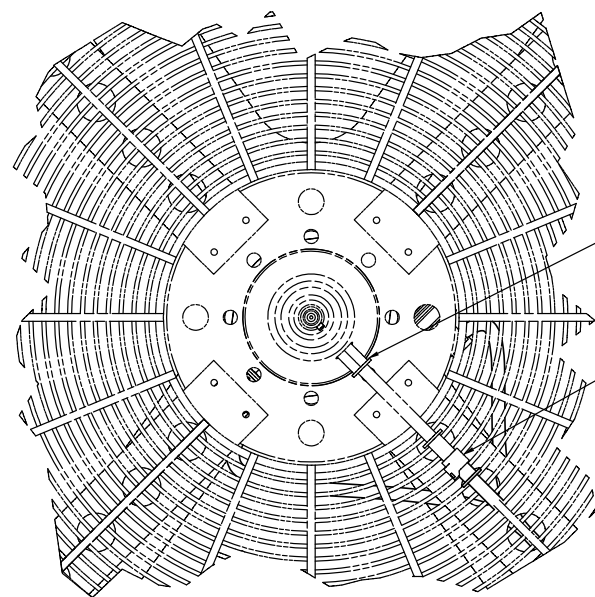
**SECTION 7U6-7U6
RH COOLING PACKAGE WIRING ROUTING**



ROUTE ALONG
MOTOR PLUMBING

**SECTION 7W6-7W6
RH FAN WIRING
ON INSIDE OF DOOR**

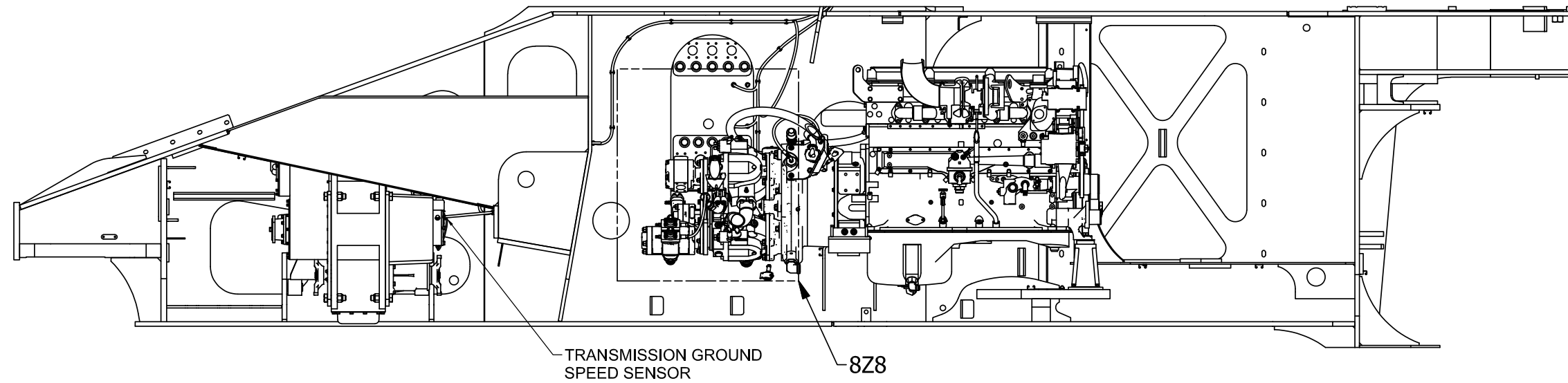
PASS-THRU



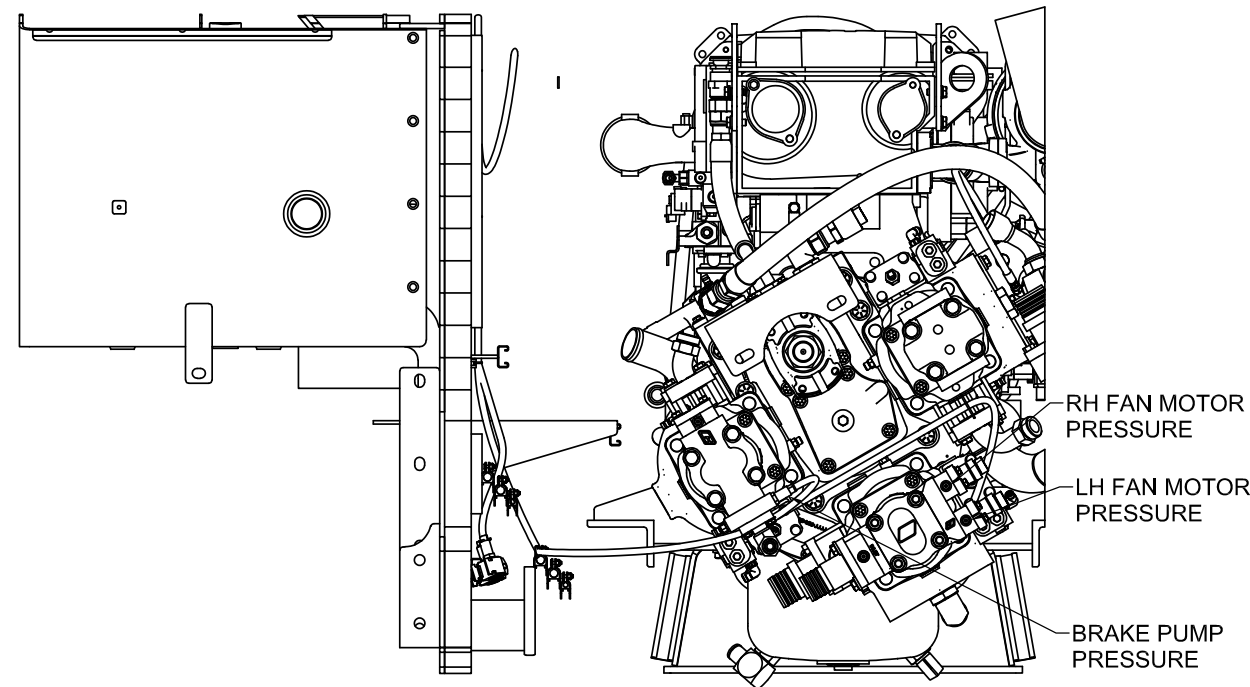
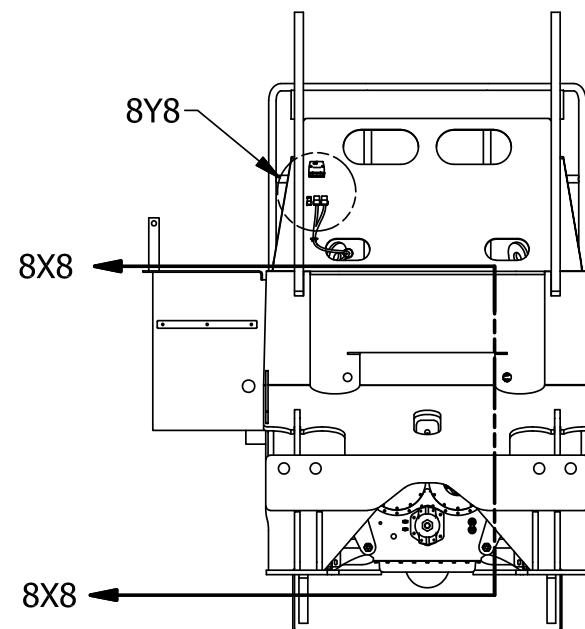
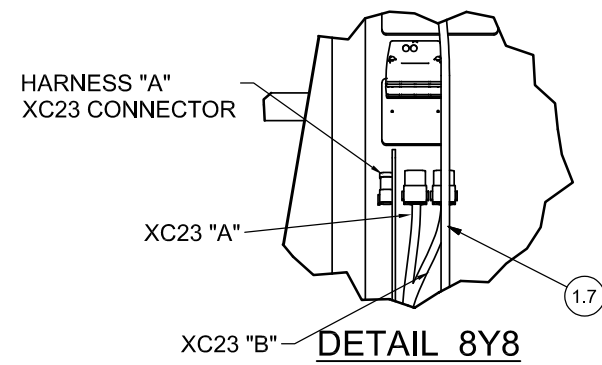
FAN MOTOR SPEED SENSOR

SPEED SENSOR CONNECTOR

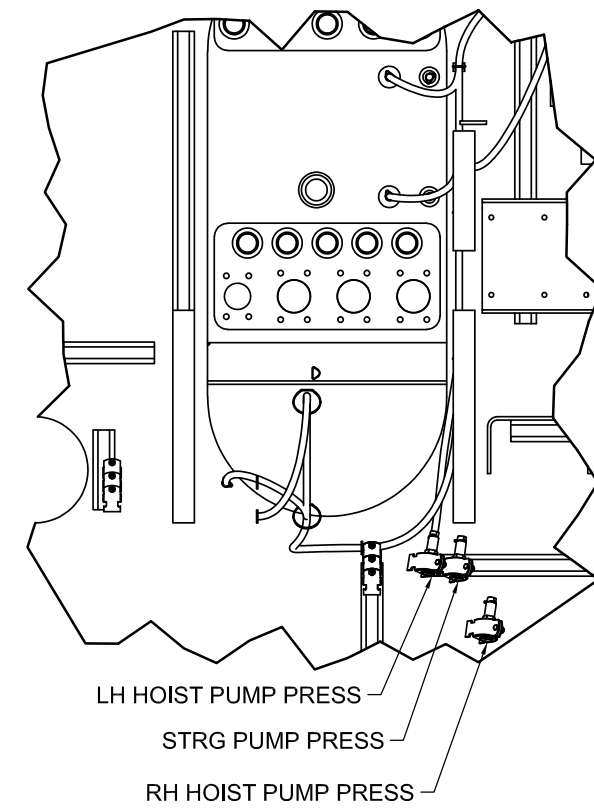
**DETAIL 7V6
RH FAN SPEED SENSOR
ON FAN SIDE OF GUARD**

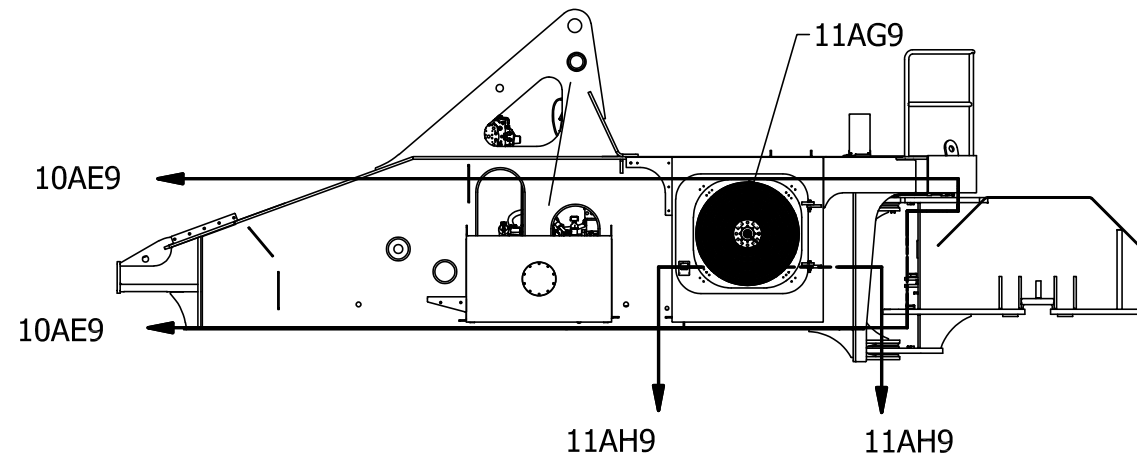
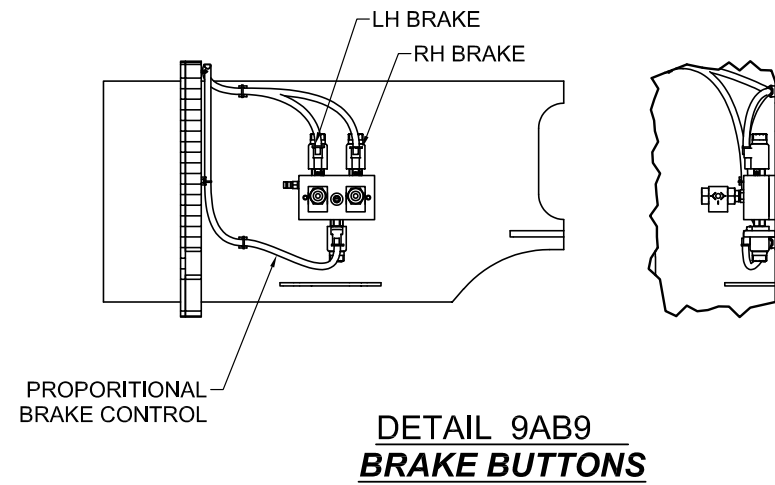
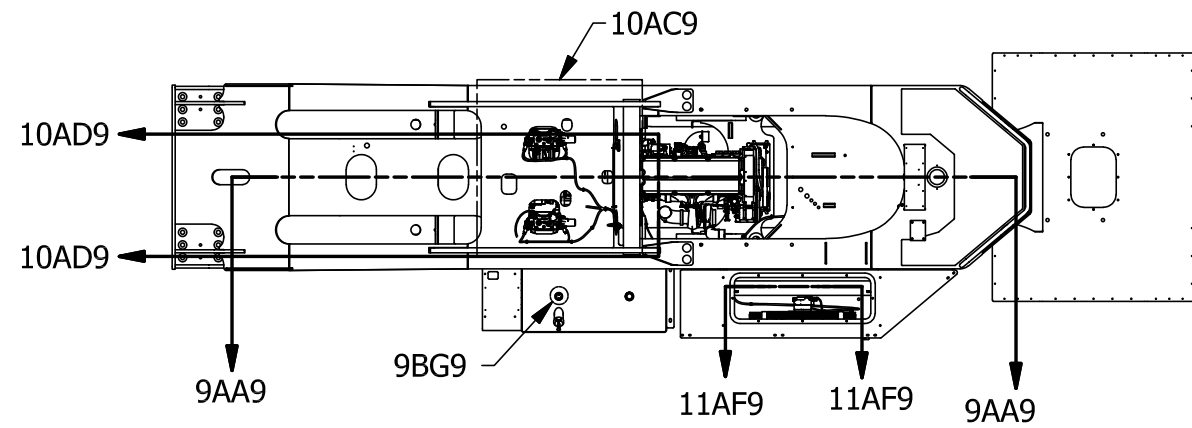
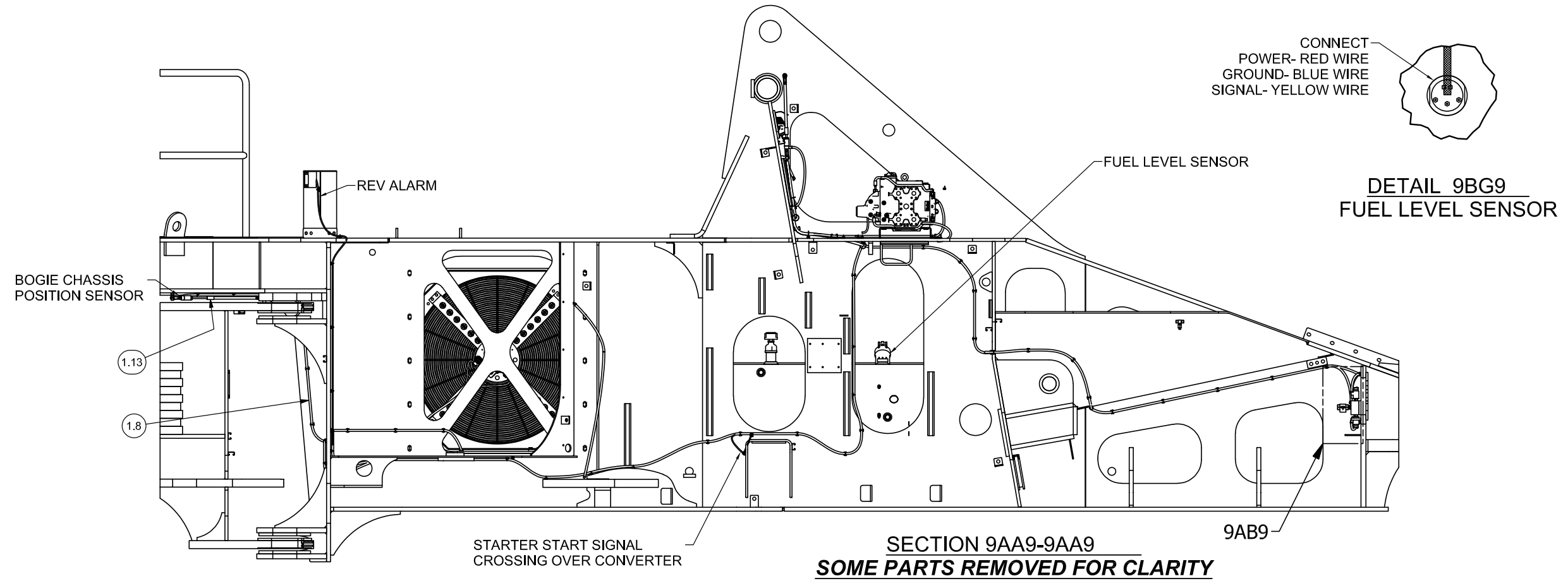


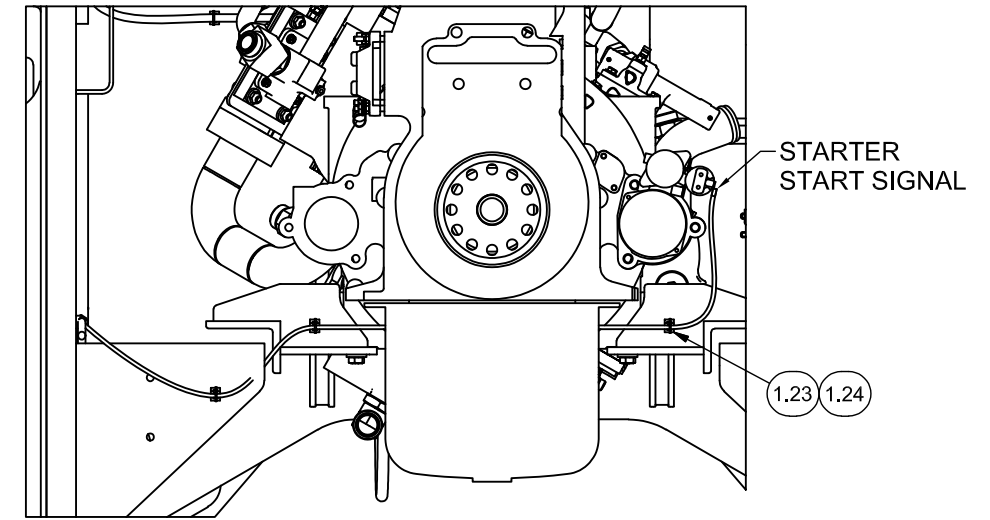
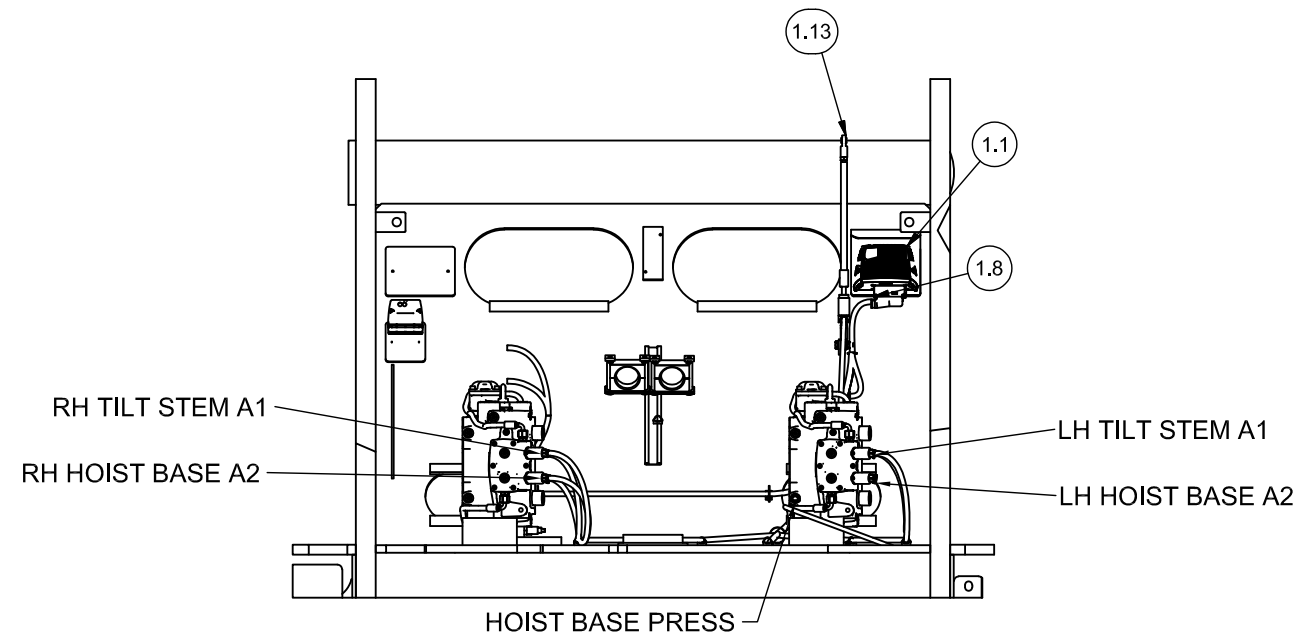
SECTION 8X8-8X8
SOME PARTS REMOVED FOR CLARITY



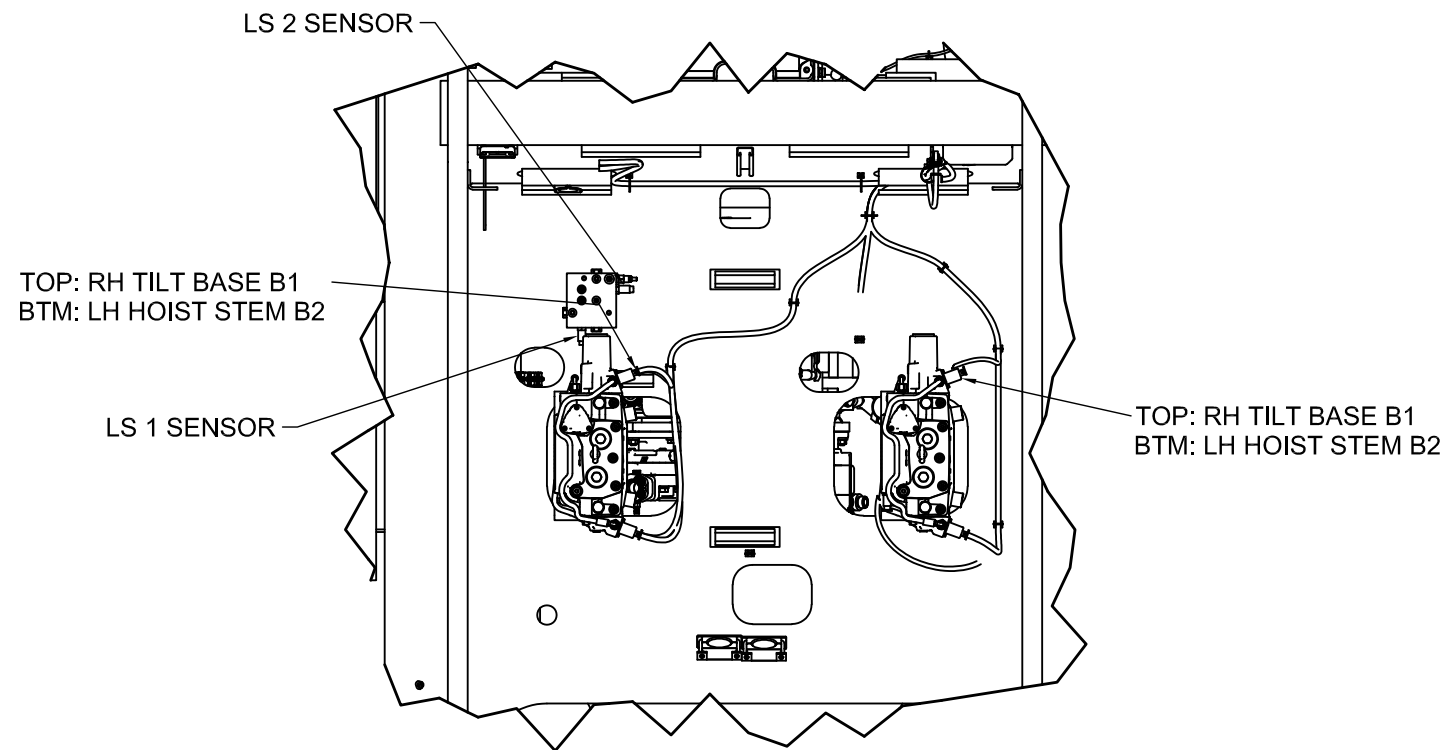
DETAIL 8Z8
ENGINE PRESSURE TRANSDUCER WIRING
POWER UNIT REMOVED FOR CLARITY IN RIGHT VIEW



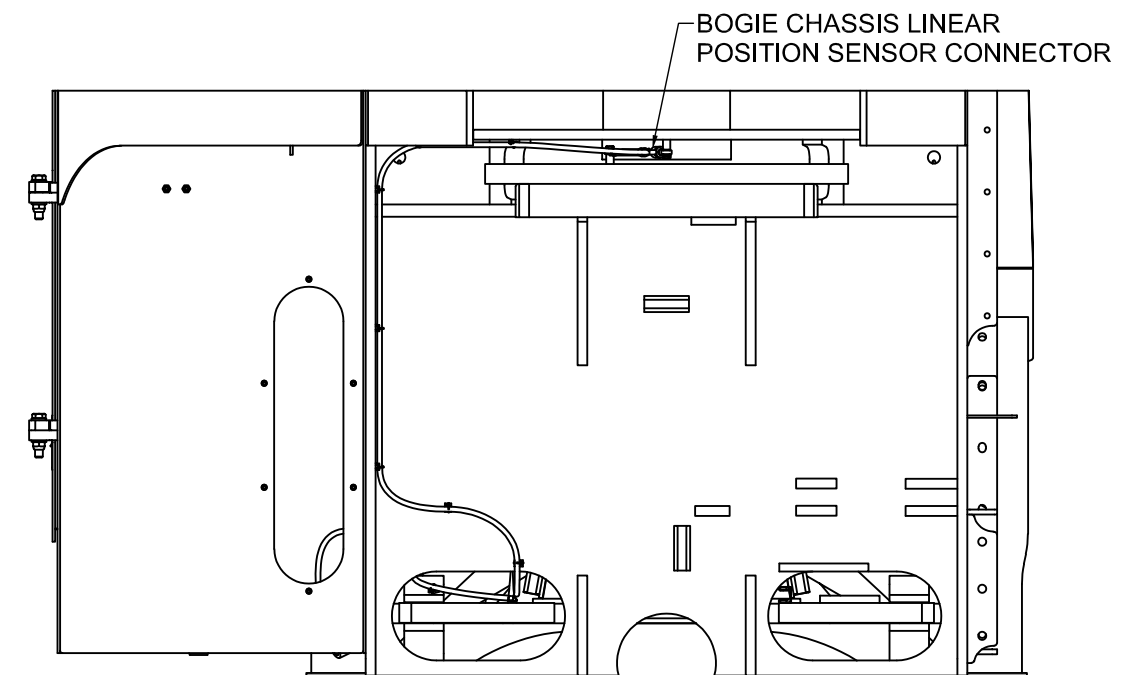




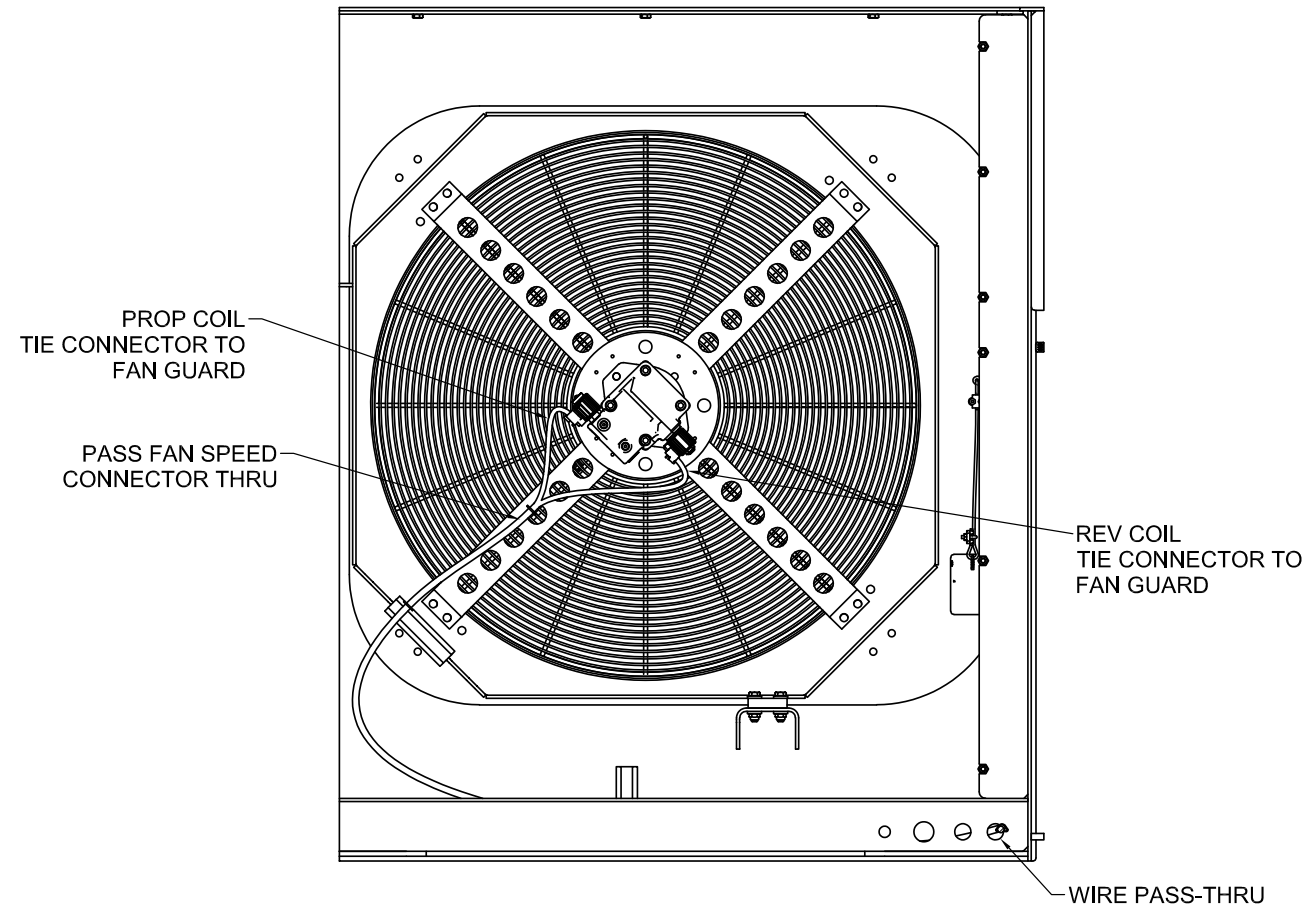
SECTION 10AD9-10AD9
STARTER WIRING ROUTE



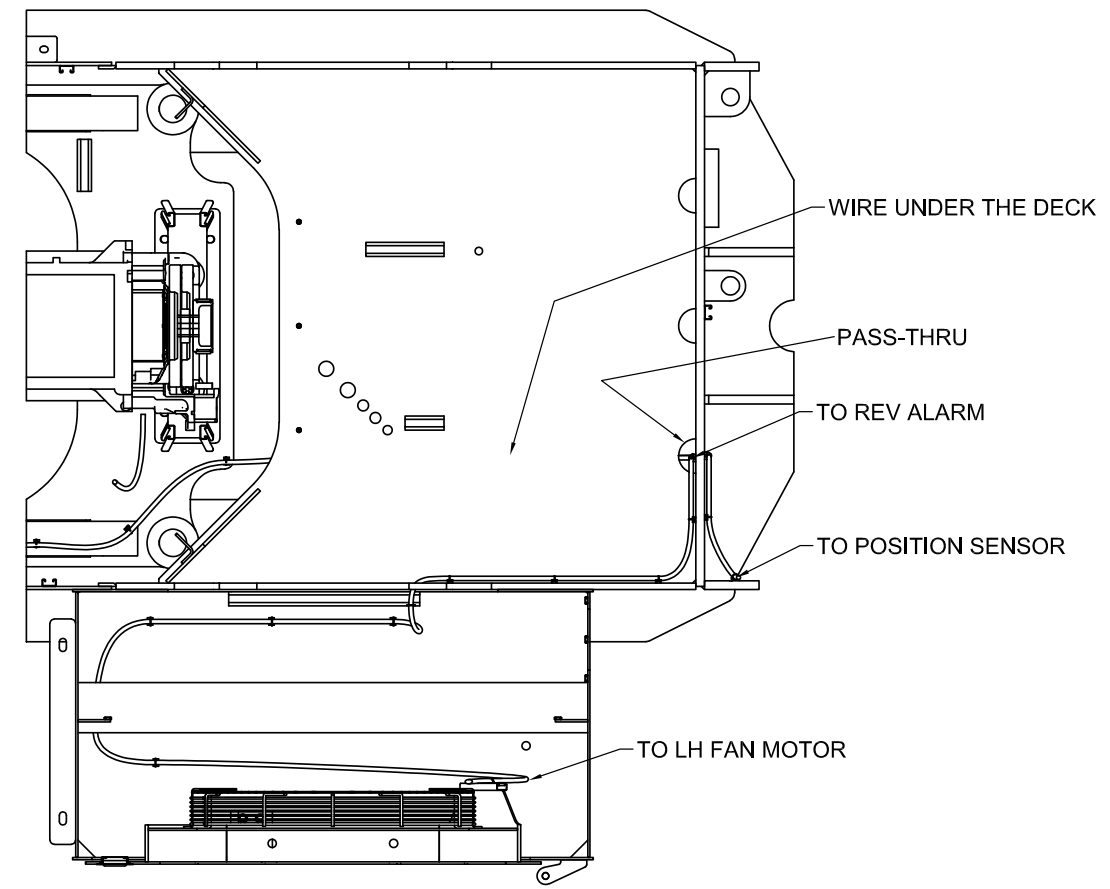
DETAIL 10AC9
HOIST & TILT VALVE WIRING



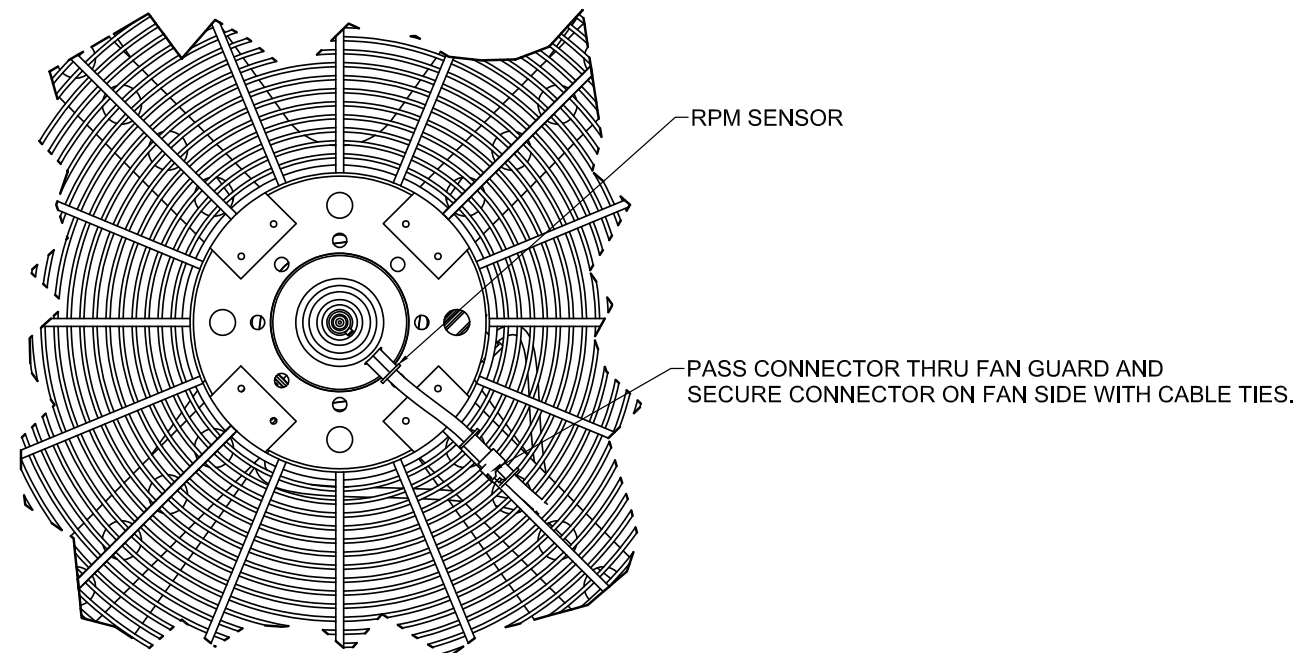
SECTION 10AE9-10AE9
CHASSIS BOGIE POSITION SENSOR WIRING



SECTION 11AF9-11AF9
MOTOR SIDE OF FAN DRIVE

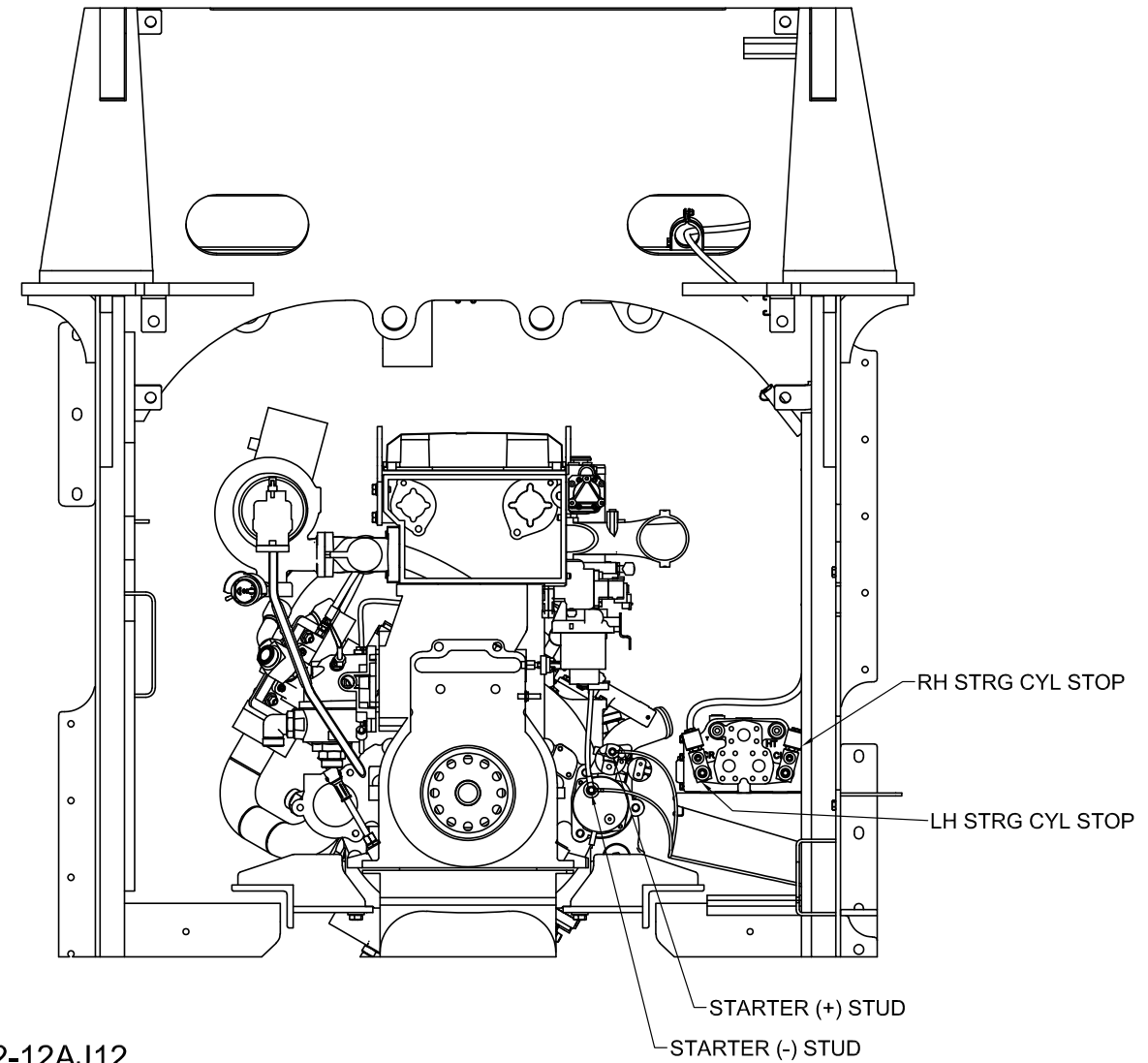
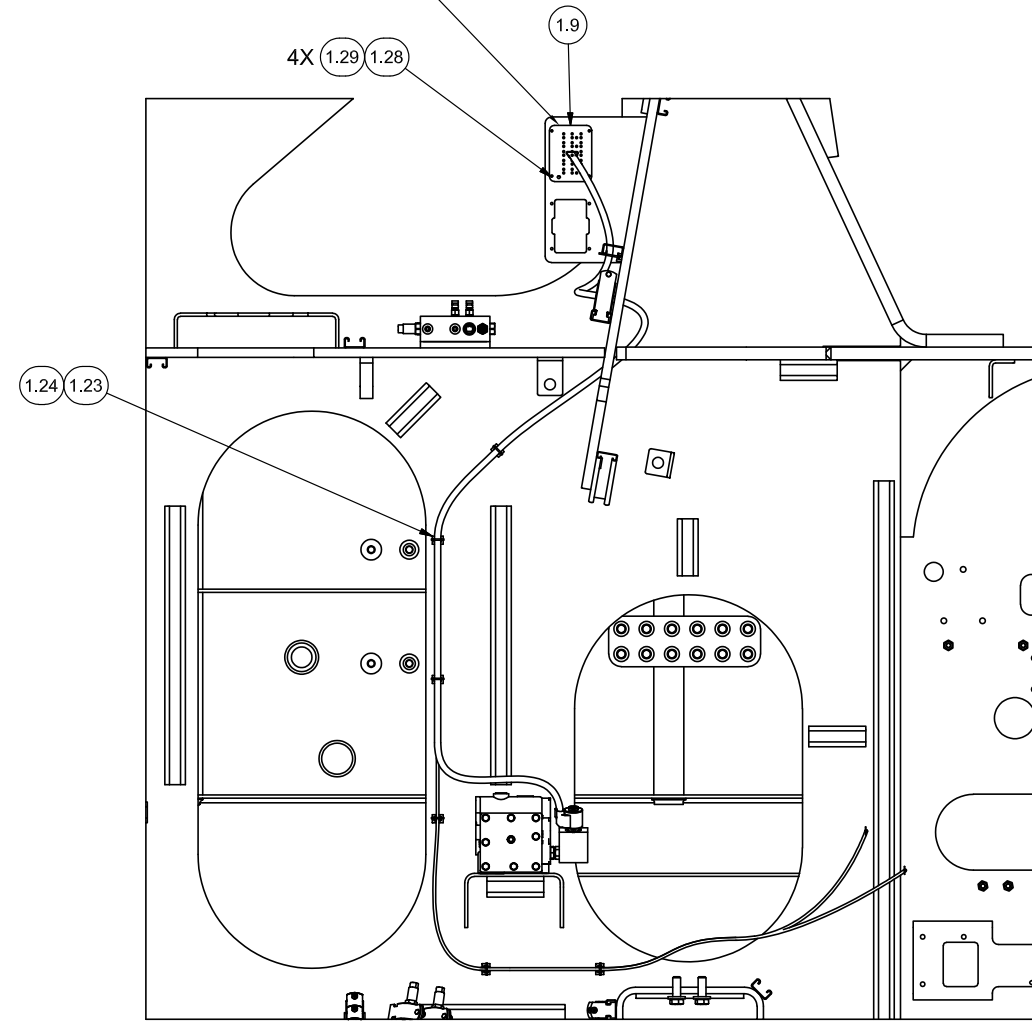


SECTION 11AH9-11AH9

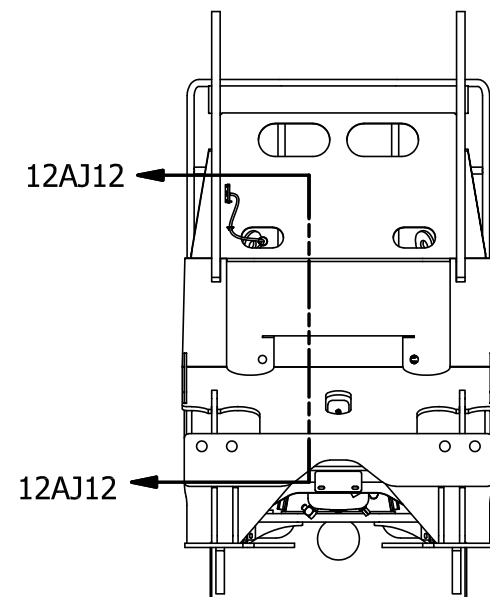


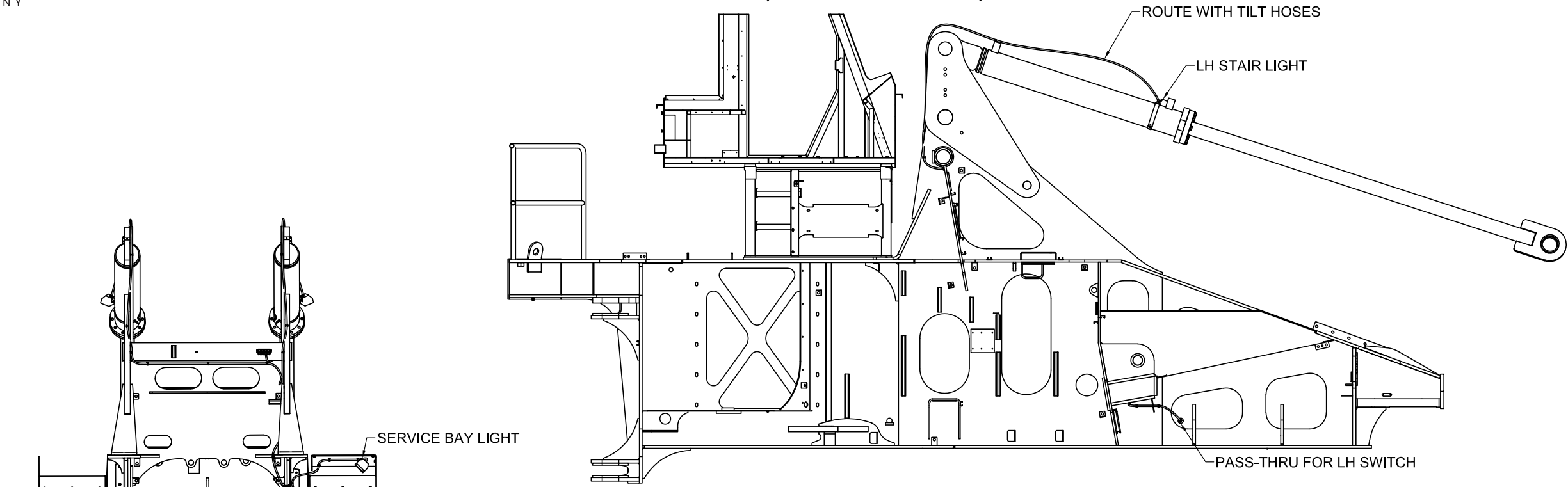
DETAIL 11AG9
FAN SIDE

CONNECT XC23 TO REMOTE MONITOR

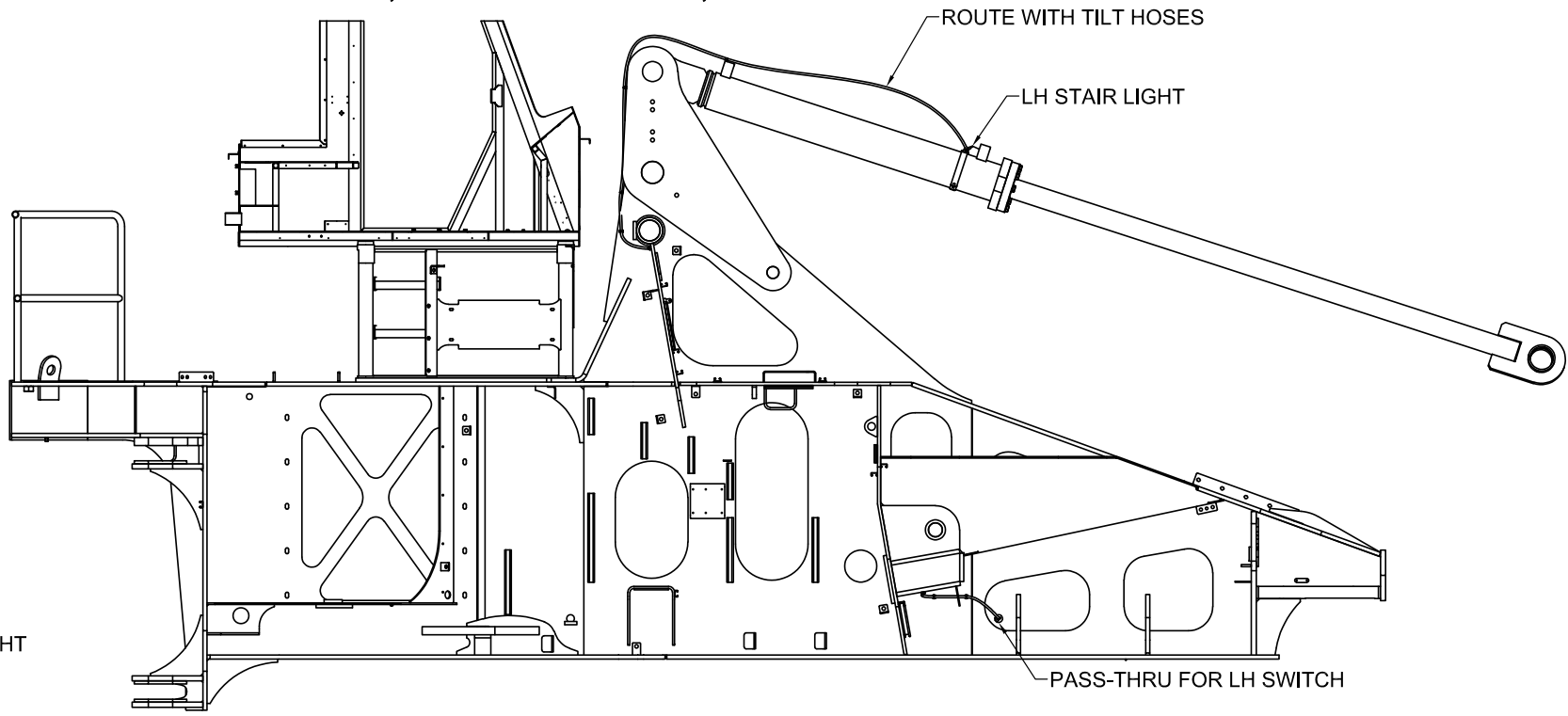


SECTION 12AJ12-12AJ12
STRG CYL STOPS
SOME PARTS REMOVED FOR CLARITY

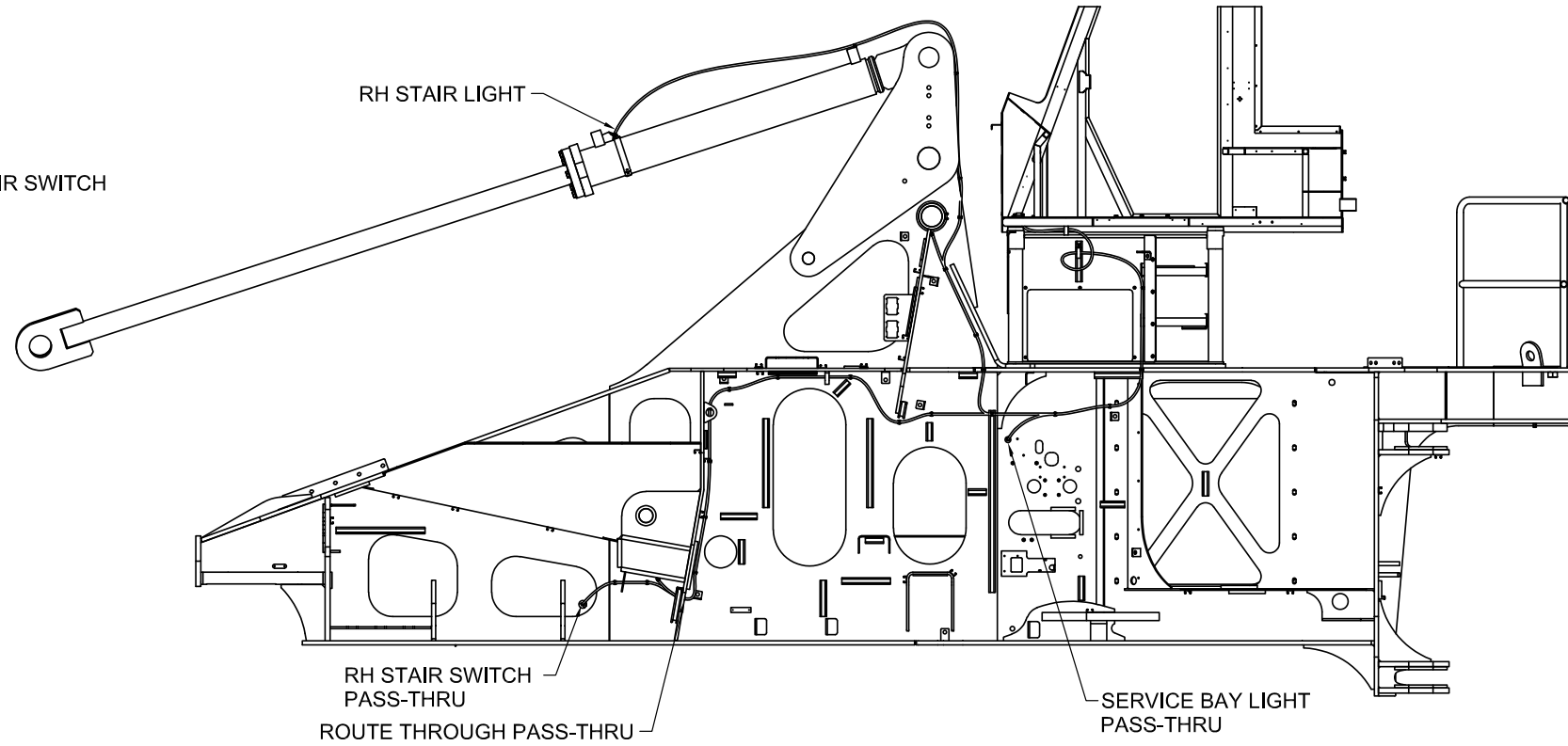




SECTION 14BA14-14BA14
SOME PARTS REMOVED FOR CLARITY



SECTION 14BB14-14BB14



SECTION 14BC14-14BC14

