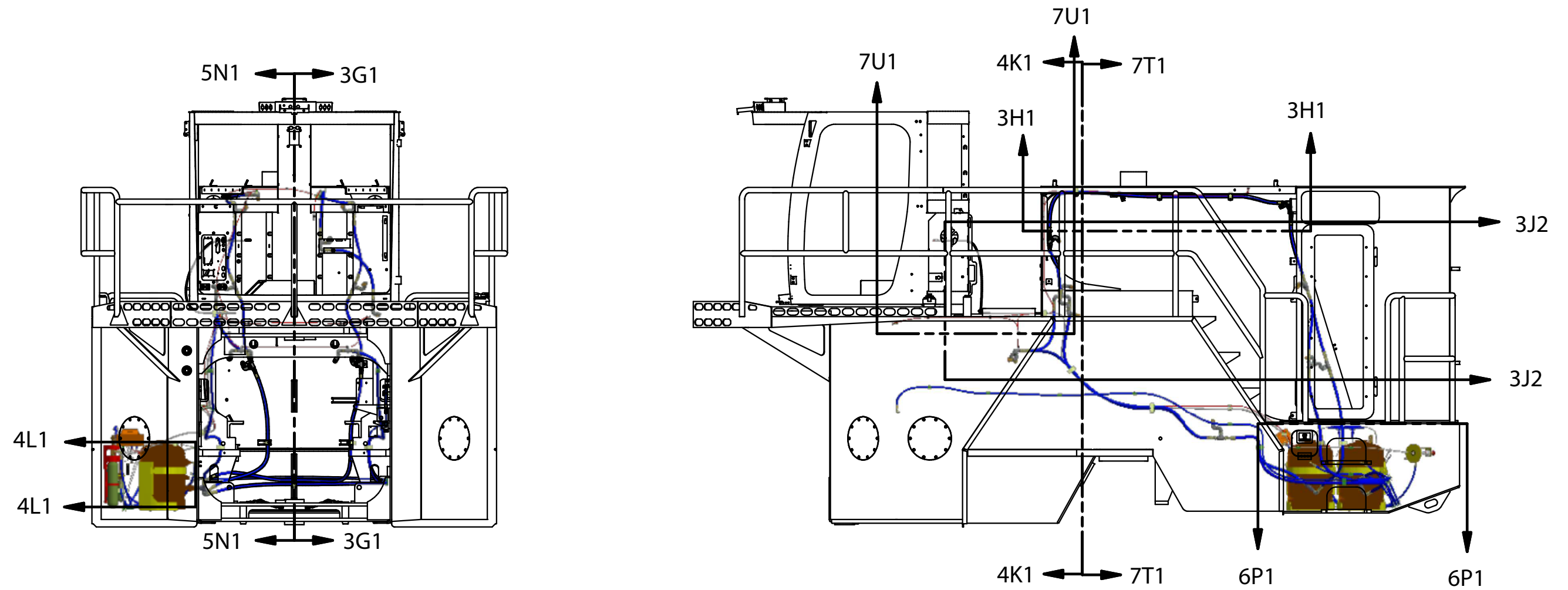

Fire Suppression Installation, Auto

Fire Suppression Installation, Auto

Item	Part No.	Qty	Description	Item	Part No.	Qty	Description
	600957		Fire Suppression Installation, Auto				
1	-----	2	. Tank, LVS 10	69	-----	A/R	. Cap, Blow-Off
2	-----	4	. Chemical, Fire Suppr	70	R13813326	6	. Washer
3	-----	1	. Control Module, Interface	72	599400	17	. Clamp
4	-----	16	. Kit, Nozzle	73	-----	1	. Cable, Linear Detector
5	-----	1	. Actuator	74	-----	29	. Sleeve, Rubber
6	-----	1	. Cartridge, Nitrogen	75	R13810989	1	. Capscrew
7	-----	2	. N2 Gas, Assembly	76	R13810990	4	. Capscrew
8	594346	1	. Actuator Bracket	77	-----	1	. Cable, Power Circuit
9	-----	1	. Actuator	78	R13810996	4	. Capscrew
10	-----	1	. Battery	79	241844	1	. Fitting, Bulkhead
11	-----	3	. Actuation Device, Protracting	80	-----	1	. Cable, Detection Ckt
12	-----	1	. Fused Power Circuit Cable	90	209486	1	. Fitting
13	-----	1	. Cable Assembly, Relay Circuit	91	212900	2	. Fitting
14	-----	3	. Cable, Drop	92	296417W	4	. Washer
15	598366	1	. Bracket, Fire Accs Drvr	93	209757	28	. Fitting
16	-----	1	. Relief Valve	94	252051	2	. Tee, Reducer
17	CLP0100200	1	. Clamp	95	209406	2	. Fitting
18	209752	2	. Fitting	96	R13801840	8	. Capscrew
19	596370	2	. Fitting	97	R13811190	12	. Locknut
20	221280	2	. Fitting	98	236571	2	. Nipple, Pipe
26	225250	28	. Lockwasher	99	601370	1	. Kit, Hose
27	249733	12	. Tee, Pipe	99.1	247716	1	. Hose Assembly
28	249732	43	. Elbow, Pipe	99.2	601372	2	. Hose Assembly
29	589926	25	. Nipple, Pipe	99.3	243224	1	. Hose Assembly
31	209161	16	. Fitting	99.4	601374	1	. Hose Assembly
38	221763W	13	. Washer	99.5	590137	2	. Hose Assembly
42	15113W	4	. Locknut	99.6	245838	1	. Hose Assembly
45	231296	16	. Clamp	99.7	593721	2	. Hose Assembly
49	209405	1	. Fitting	99.8	594999	2	. Hose Asssy
50	210299	1	. Air Cleaner	99.9	601375	1	. Hose Assembly
51	231251	15	. Clamp	99.10	597224	1	. Hose Assembly
52	239083	1	. Grommet	99.11	601376	1	. Hose Assembly
55	-----	2	. Connector, Tee	99.12	598378	1	. Hose Assembly
56	595326	16	. Mount, Tack	99.13	601378	1	. Hose Assembly
57	249329	16	. Cable Tie	99.14	254279	1	. Hose Assembly
58	-----	1	. Cable, Release Ckt	99.15	601373	1	. Hose Assembly
59	-----	1	. Connector, Tee	100	R13811014	12	. Capscrew
60	-----	1	. Cable, Detection Ckt	101	R13802914	24	. Washer
61	73969	1	. Cable Tie	102	R13809364	4	. Capscrew
62	231252	6	. Clamp	103	221771W	8	. Washer
66	-----	2	. Connector, EOL Device	107	209750	1	. Fitting
67	YHGB 06	6'	. Hose Guard, Plastic Spiral	108	209790	1	. Fitting
68	590087	2RL	. Tape				

Fire Suppression System should be serviced by an authorized ANSUL service technician.



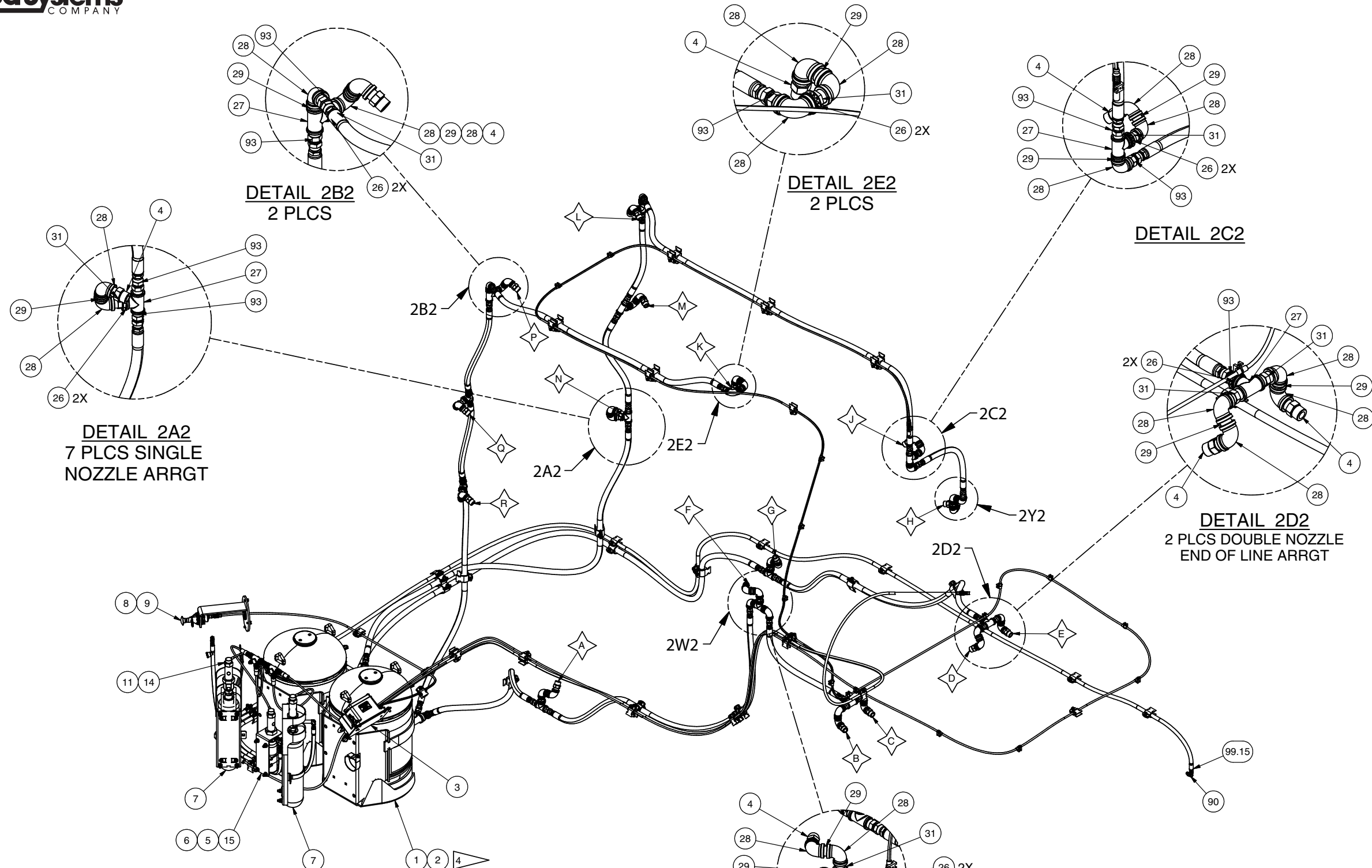
NOTES:

2. ITEMS 67, 68, 69, 70 ARE NOT SHOWN. ITEM 69 COMES WITH NOZZLE KIT. ITEM 67 IS TO BE USED WHEN PASSING HOSE THROUGH OR AROUND ANY SHARP EDGES OF A DECK OR BULKHEAD. THE USE OF ITEM 68 IS TO BE USED ON ALL THREADED PIPE CONNECTIONS. DO NOT ALLOW TAPE INSIDE OF CONNECTION. THE USE OF LIQUID SEALANTS IS NOT APPROVED BY ANSUL. ITEM 70 IS TO BE USED AS REQUIRED TO ENSURE A TIGHT CONNECTION WHEN ATTACHING FITTINGS TO NOZZLE BRACKET.

3. ANSUL RECOMMENDS THE FOLLOWING MINIMUM BEND RADII FOR PARKER 26 SERIES HOSES. #4 --- 4.00 IN, #8---7.00 IN, #12---9.50 IN. ALL ANSUL ELECTRICAL CABLES HAVE A MINIMUM BEND RADII OF 2.5 INCHES.

4 WHEN FILLING TANK USE A FUNNEL AND LONG HOSE THAT REACHES BOTTOM OF TANK TO PREVENT SLOSHING OF LIQUID FOAM AGENT. THE CHEMICAL FOAM BUBBLES MAY TAKE DAYS TO DISSIPATE WHEN AGITATED.

6 ITEM 40 IS USED TO STOW EXTRA CABLES, BY COILING WIRES AND STRAPPING IN PLACE.



DETAIL 2B2
2 PLCS

DETAIL 2E2
2 PLCS

DETAIL 2C2

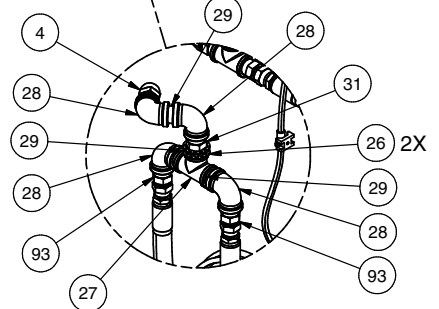
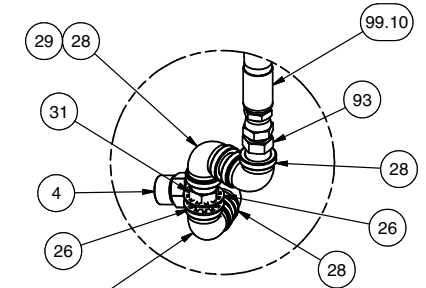
DETAIL 2A2
7 PLCS SINGLE
NOZZLE ARRGT

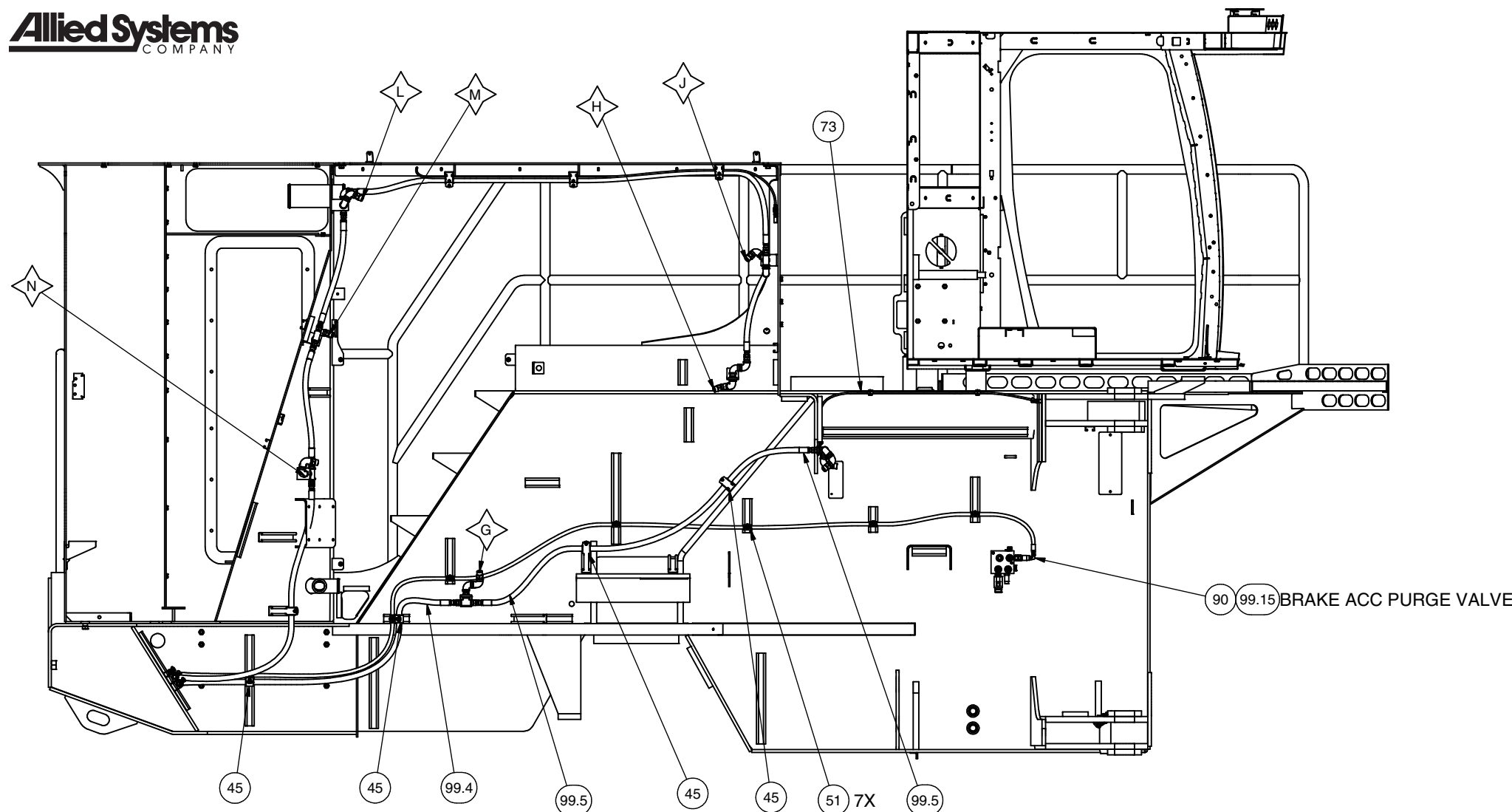
DETAIL 2D2
2 PLCS DOUBLE NOZZLE
END OF LINE ARRGT

DETAIL 2W2

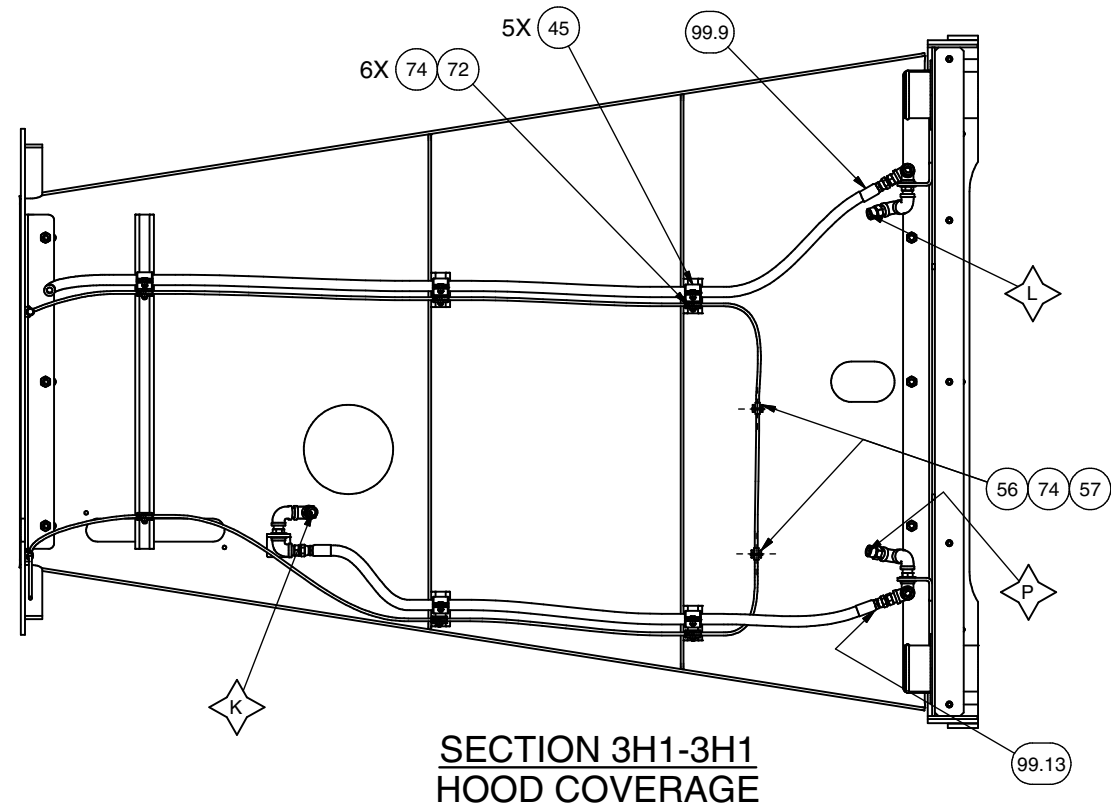
DETAIL 2Y2

NOZZLE	TARGET ZONE SCANNIA POWER UNIT
A	RH EXHAUST MANIFOLD
B	RH STRG CYL BASE END
C	TOP OF TRANSMISSION
D	TOP OF CONVERTER
E	LH STRG CYL BASE END
F	TURBO
G	LH EXHAUST MANIFOLD
H	ECM
J	TURBO
K	DEF DOSER
L	SCR UNIT
M	TOP OF ENGINE (CAC TURBO INLET)
N	LH FRANE RAIL
P	ALTERNATOR
Q	TOP OF ENGINE (CAR TURBO INLET)
R	RH FRAME RAIL

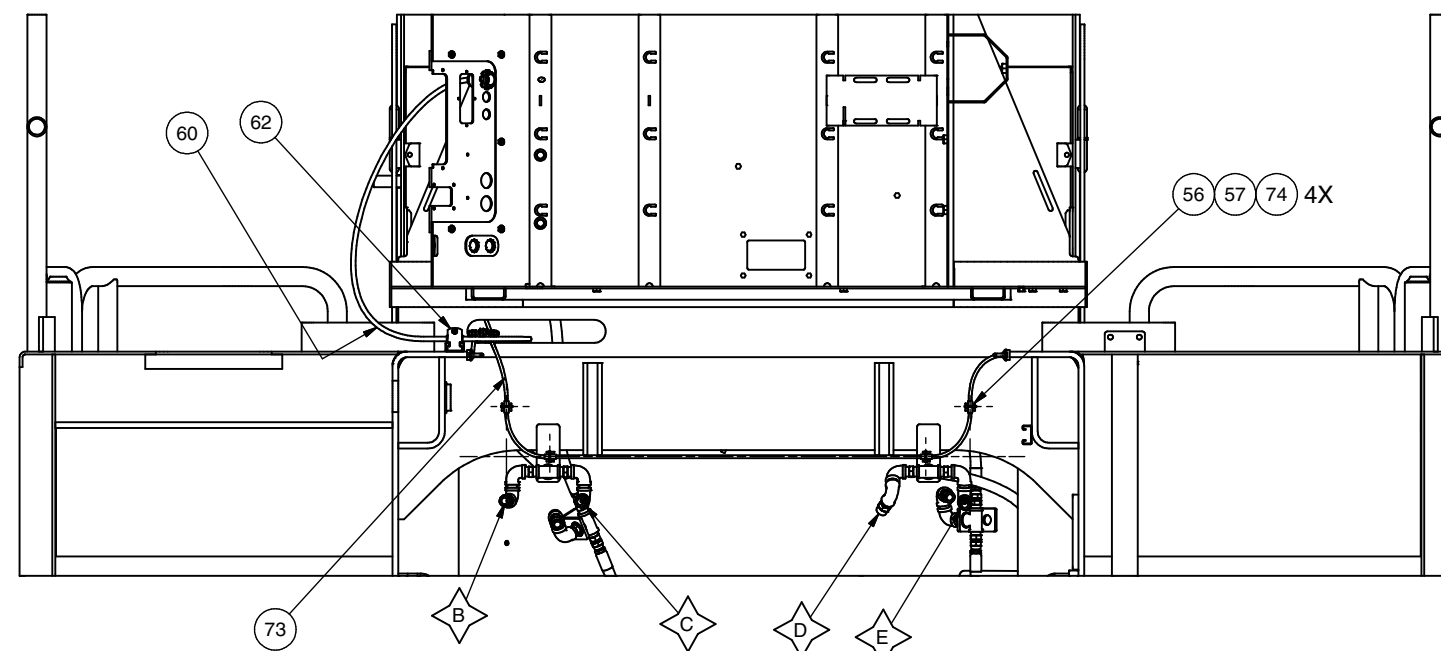




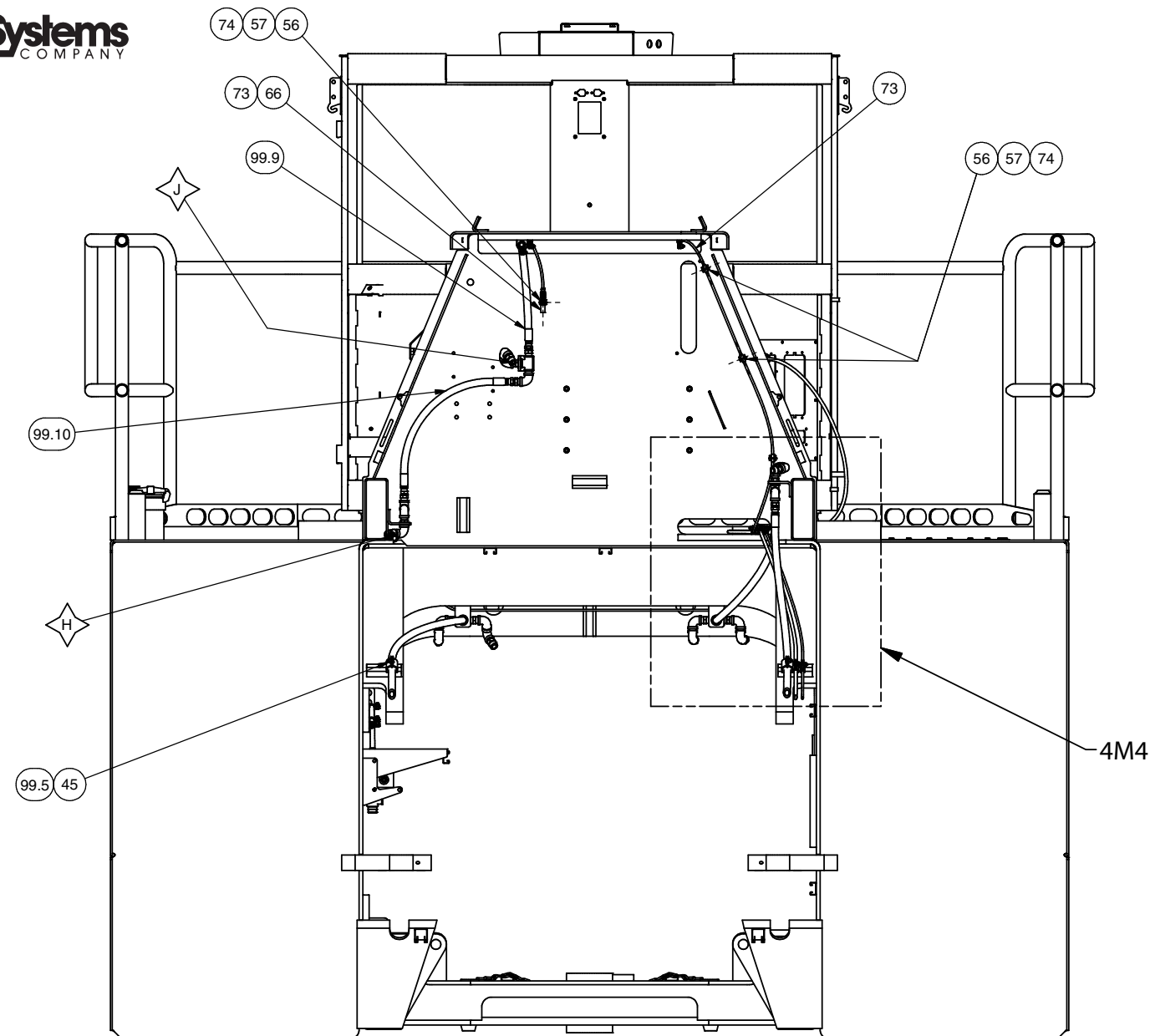
SECTION 3G1-3G1



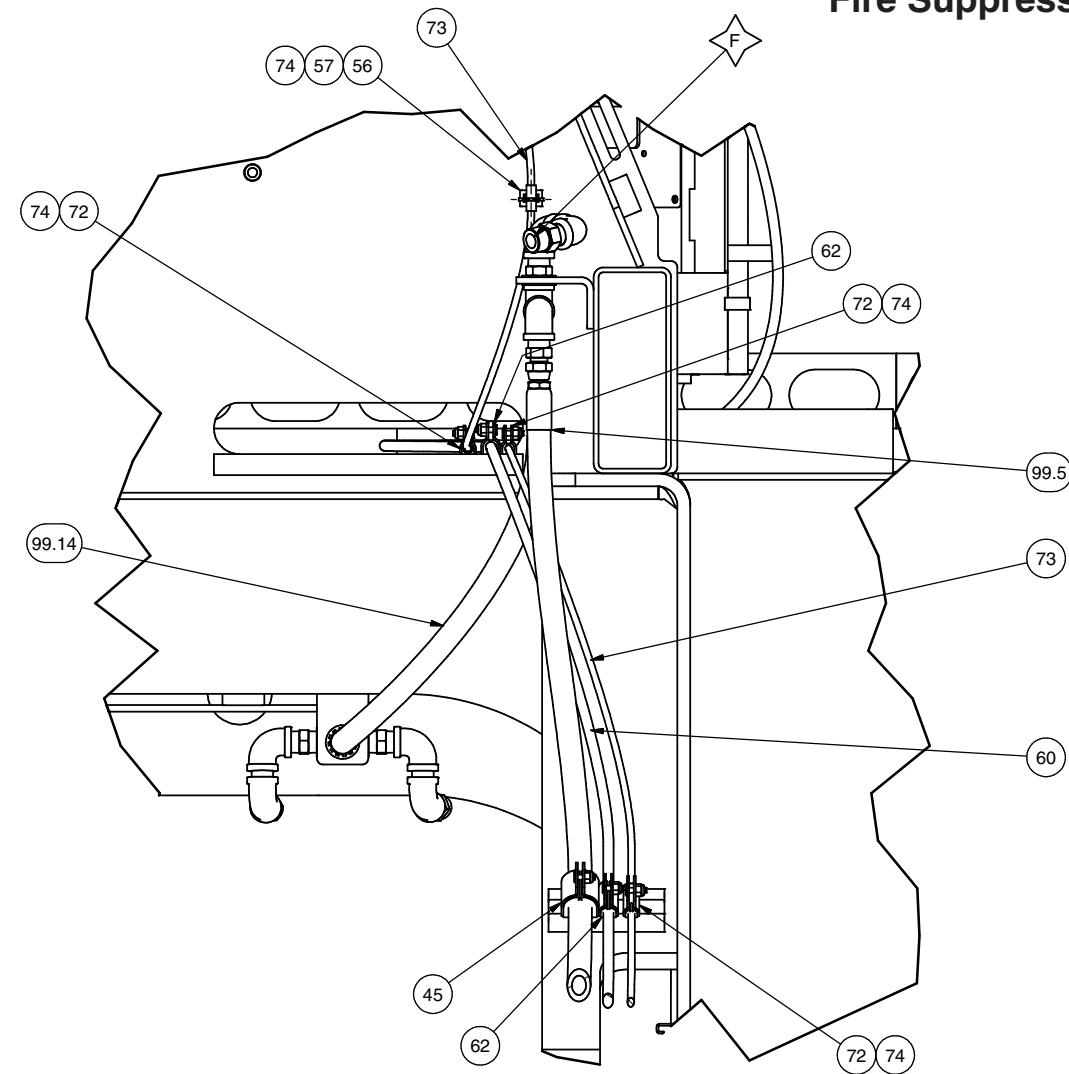
**SECTION 3H1-3H1
HOOD COVERAGE**



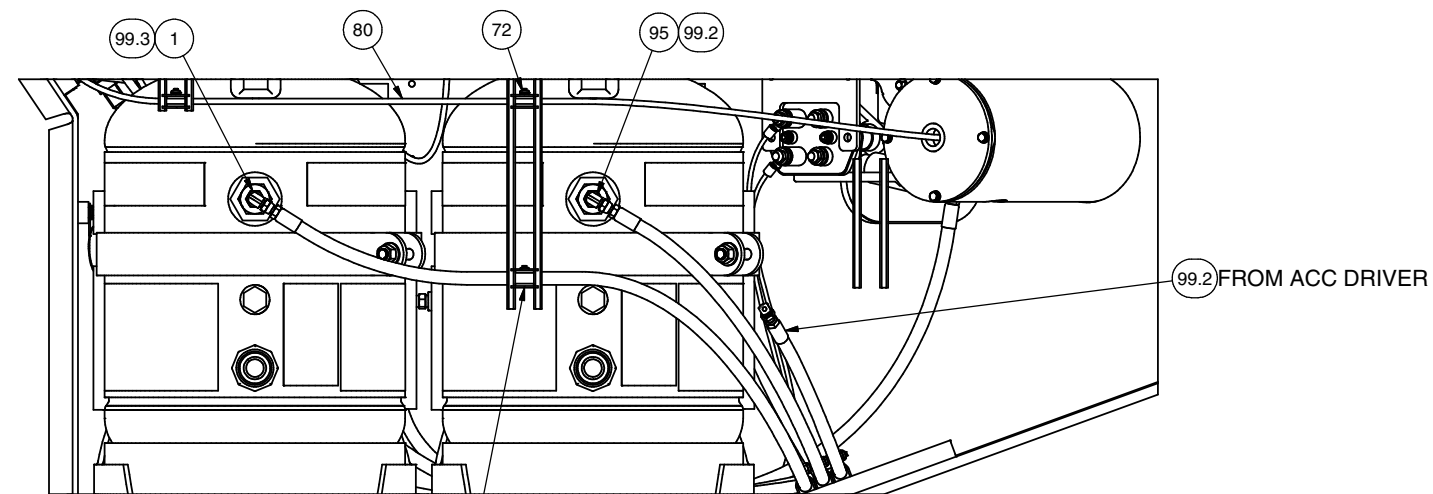
**SECTION 3J2-3J2
TRANSMISSION & UNDER CAB COVERAGE**



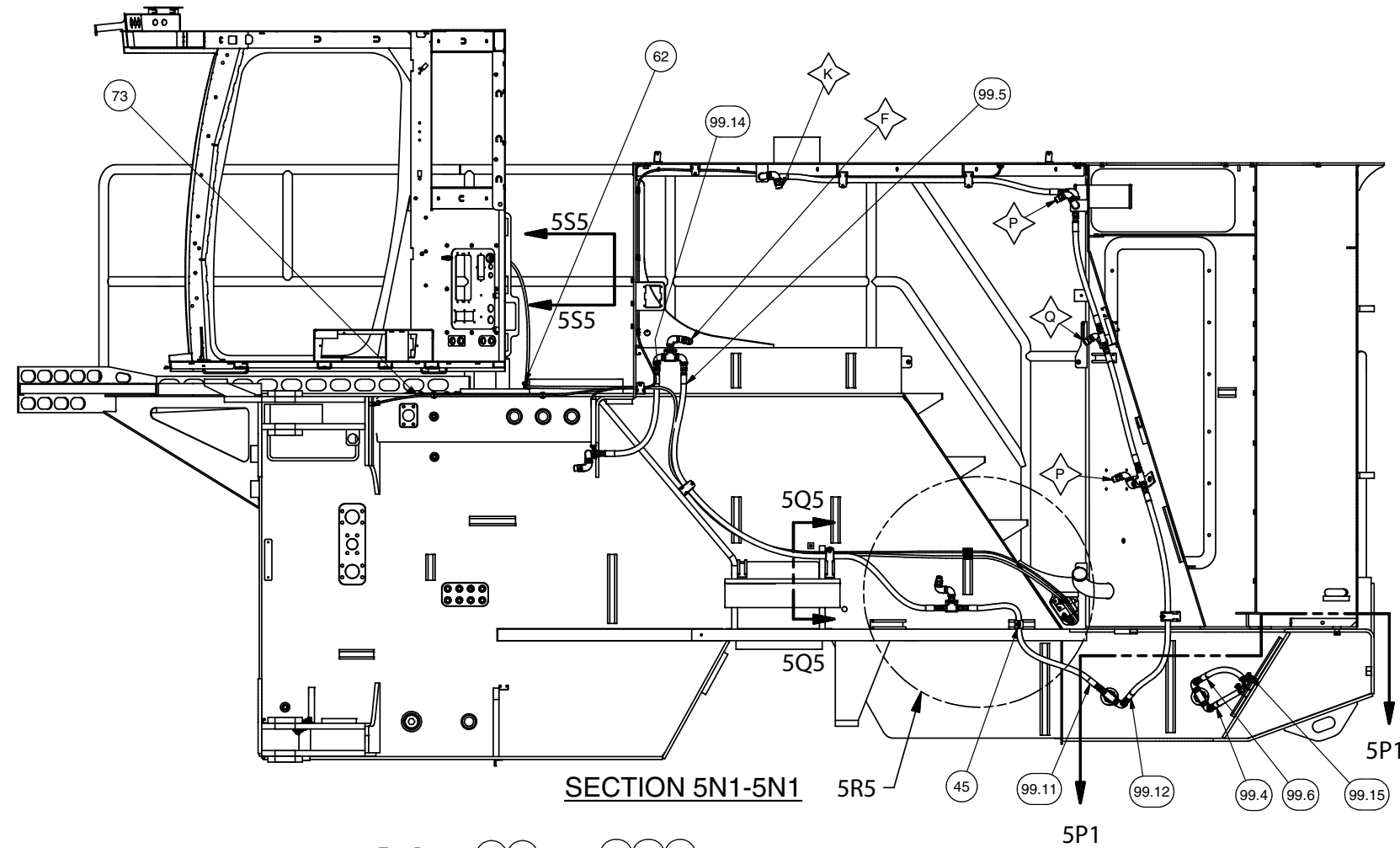
**SECTION 4K1-4K1
HOOD BULKHEAD PLUMBING**



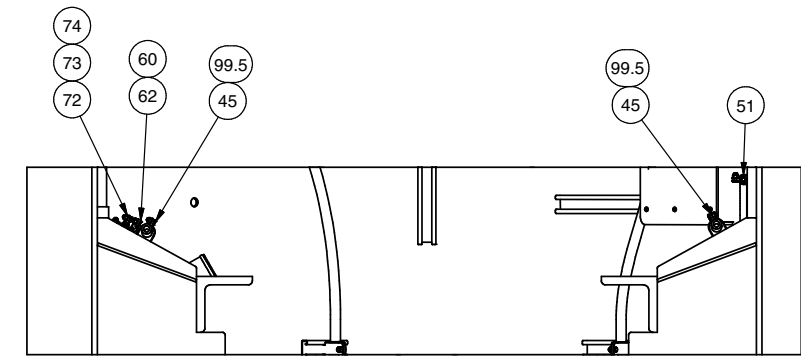
**DETAIL 4M4
HOOD BULKHEAD PASSTHROUGH**



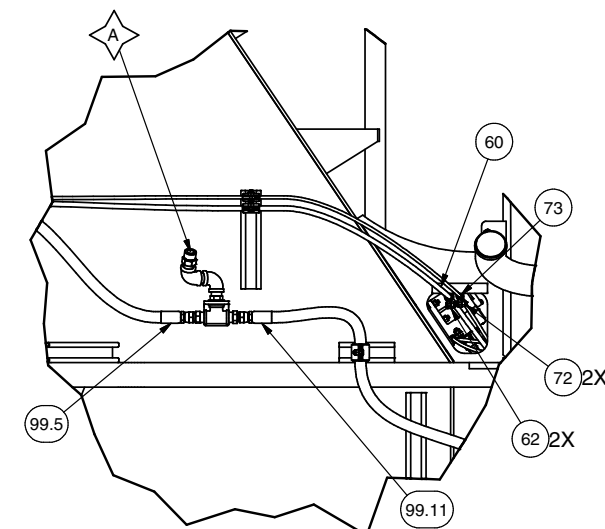
**SECTION 4L1-4L1
TANK NITROGEN GAS CONNECTIONS**



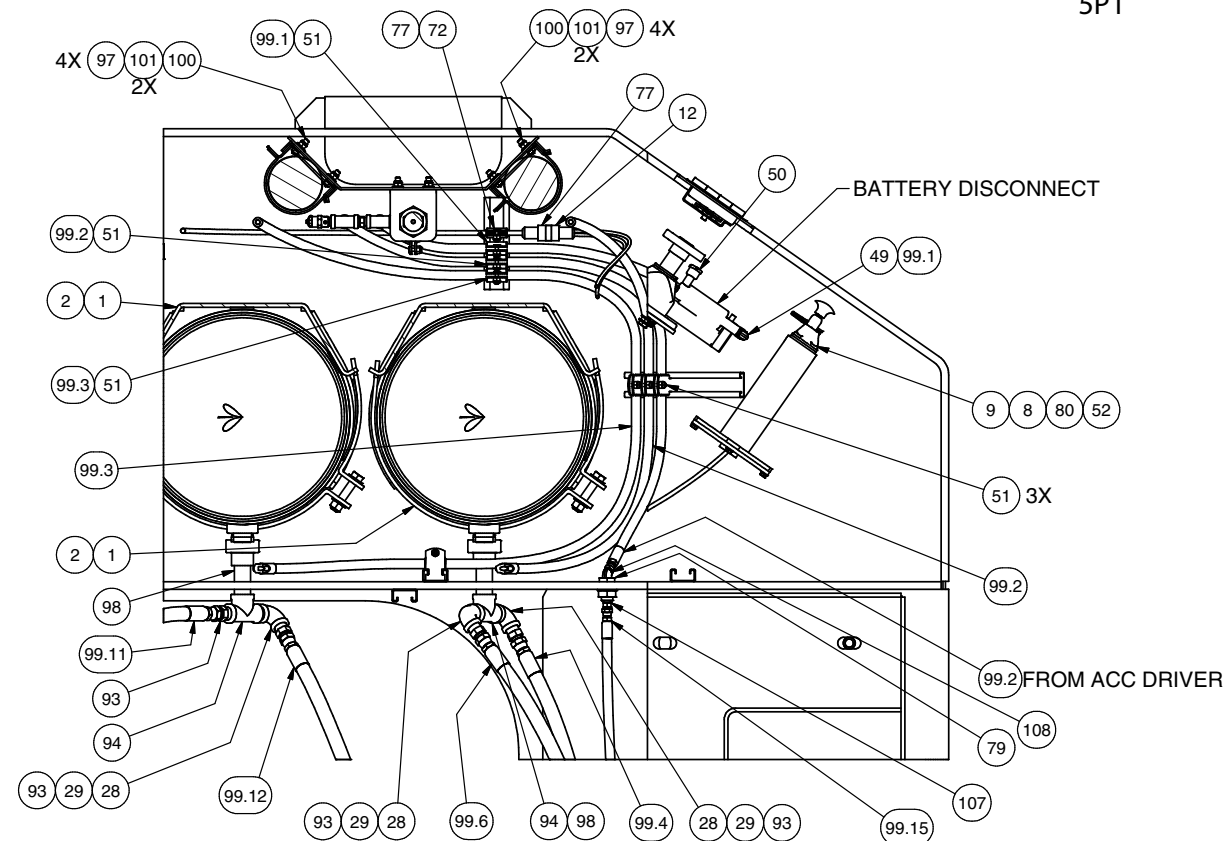
SECTION 5N1-5N1



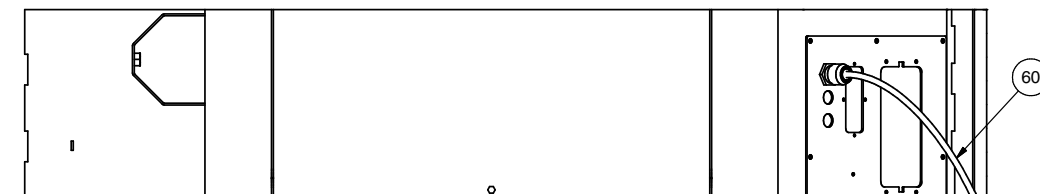
**SECTION 5Q5-5Q5
VIEW CROPPED FOR CLARITY**



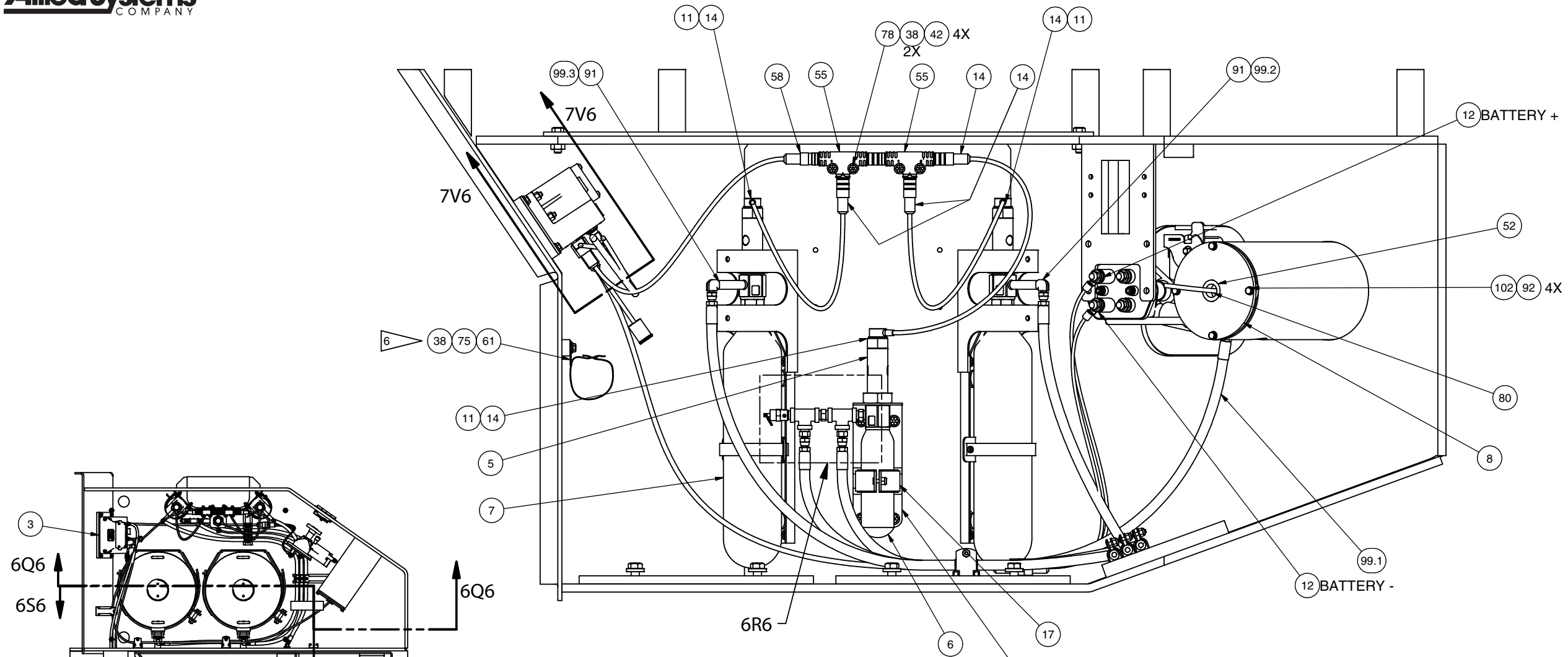
DETAIL 5R5



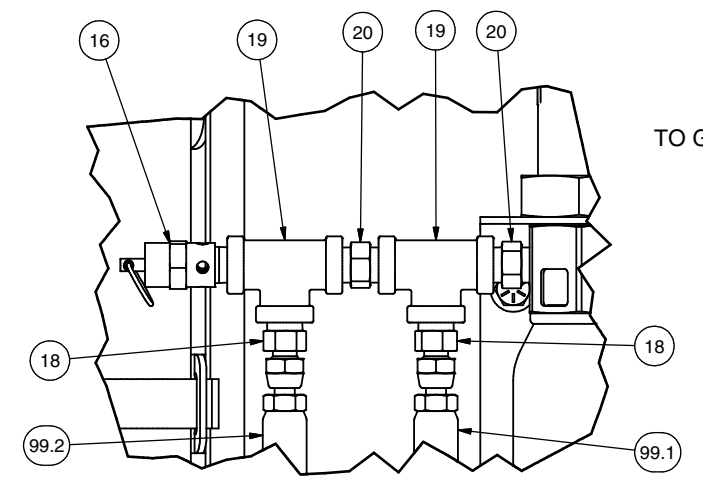
**SECTION 5P1-5P1
VIEW CROPPED FOR CLARITY**



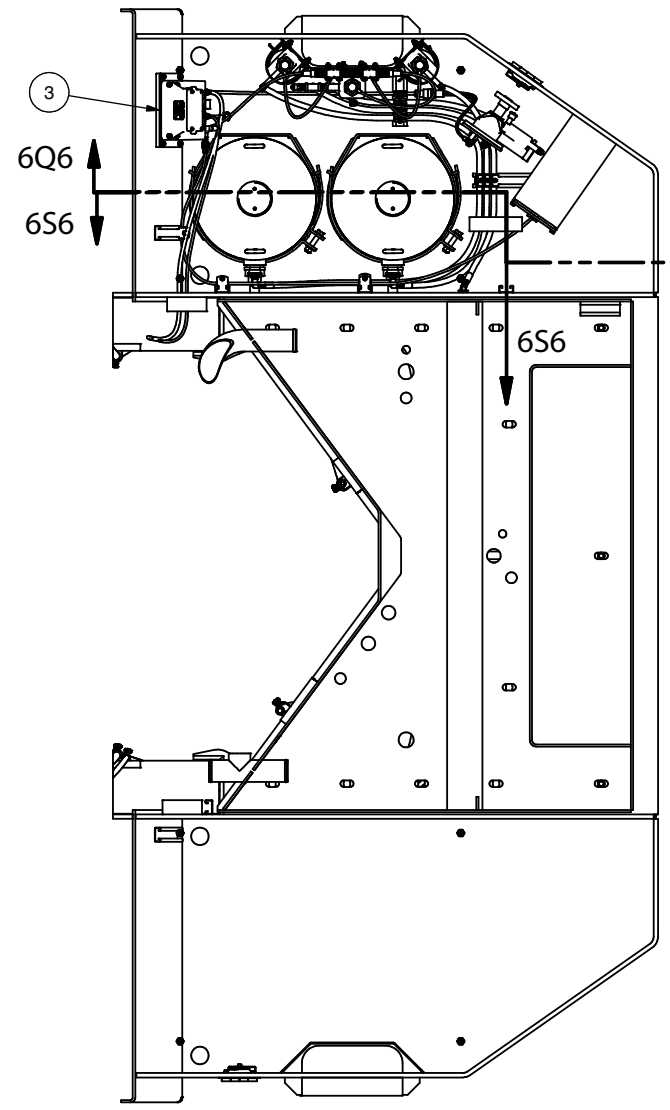
**SECTION 5S5-5S5
CAB CONNECTION**



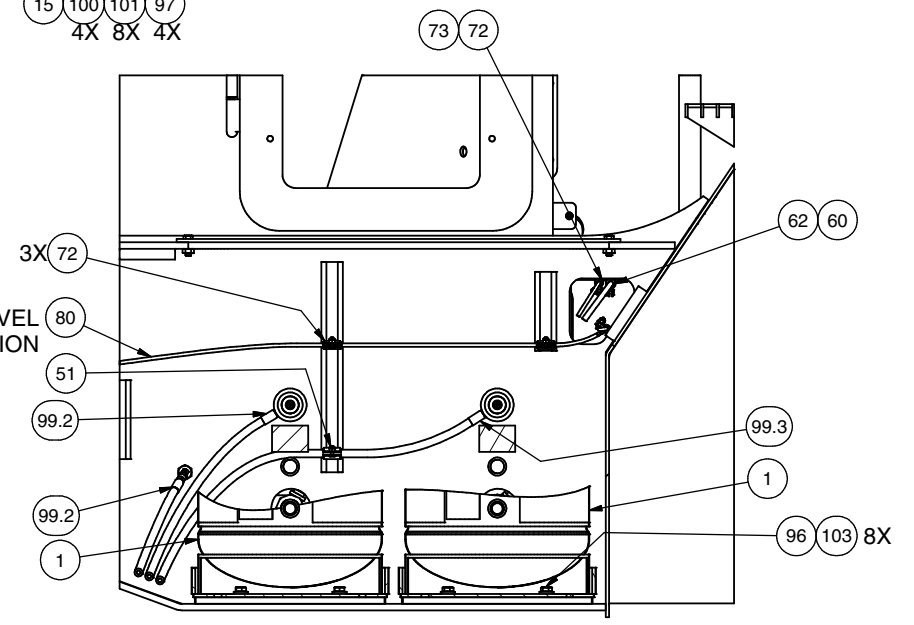
SECTION 6Q6-6Q6
ITEM 17 NOT SHOWN FOR CLARITY
VIEW CROPPED FOR CLARITY



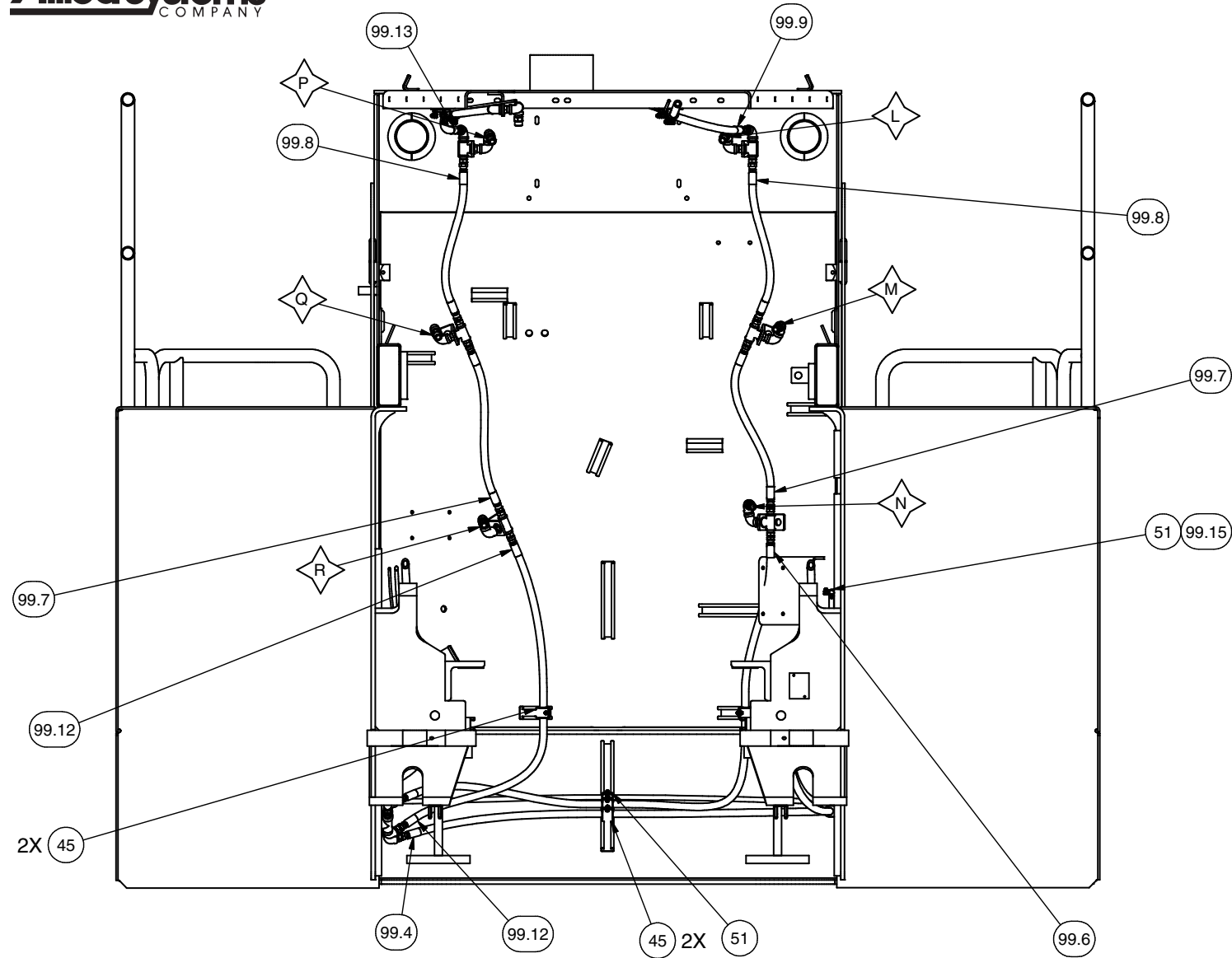
DETAIL 6R6
PNEUMATIC ACC DRIVER



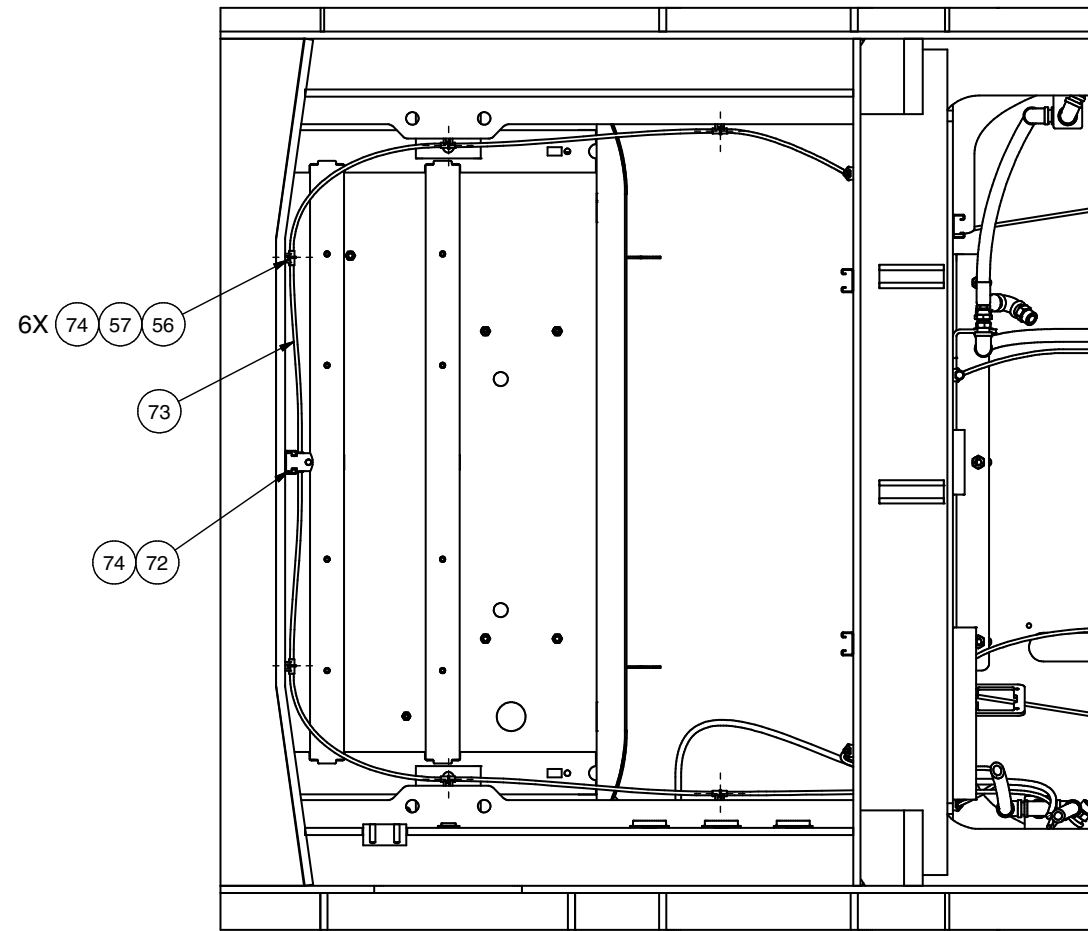
SECTION 6P1-6P1



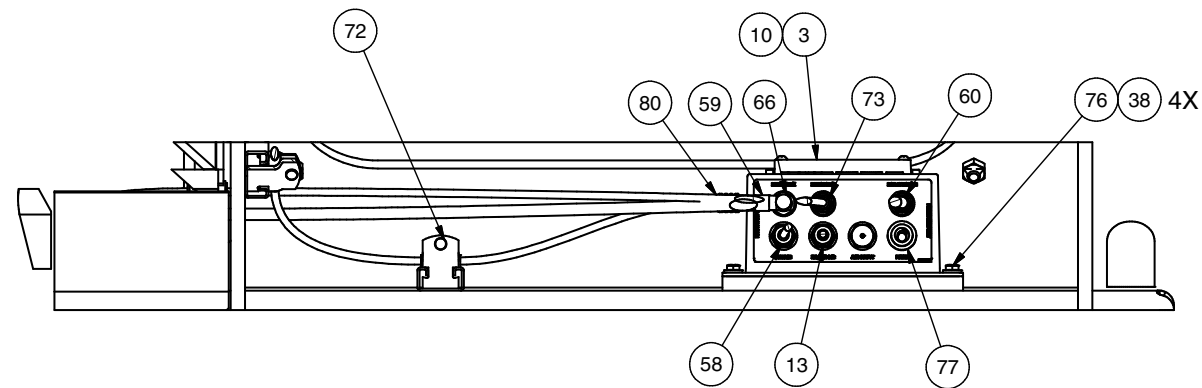
SECTION 6S6-6S6



**SECTION 7T1-7T1
COOLING PACKAGE PLUMBING**



**SECTION 7U1-7U1
TRANSMISSION DETECTION COVERAGE**



**SECTION 7V6-7V6
VIEW ROTATED AND CROPPED FOR CLARITY
CHECKFIRE ICM WIRING**