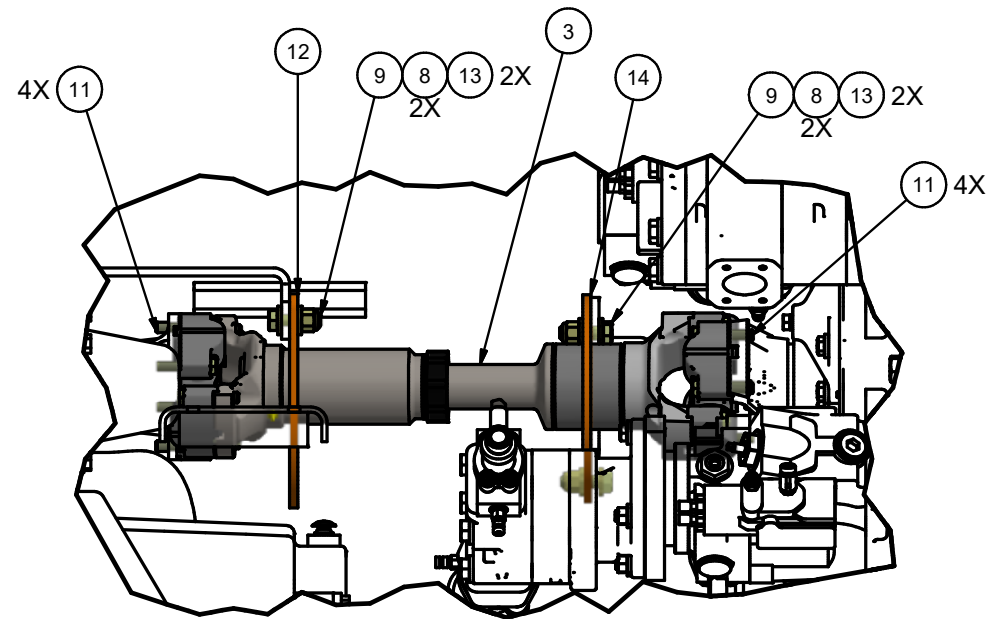

Driveline Installation

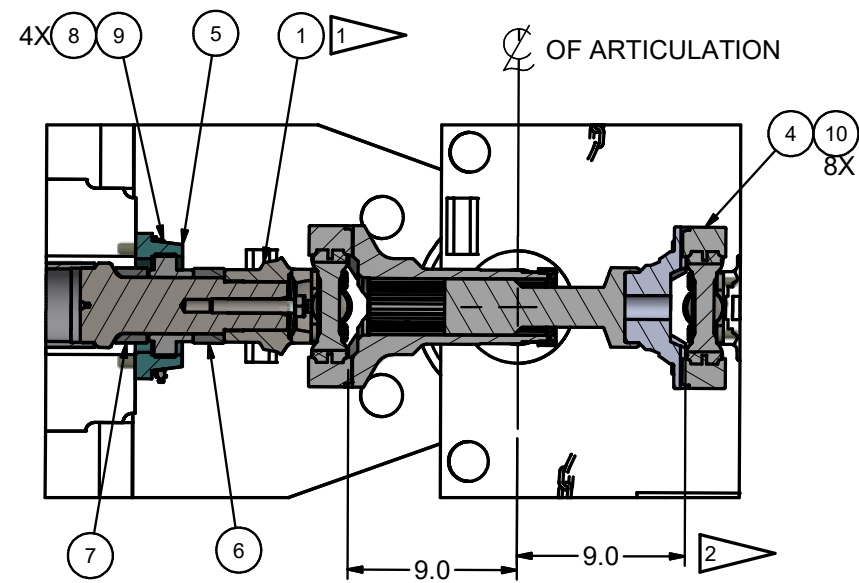
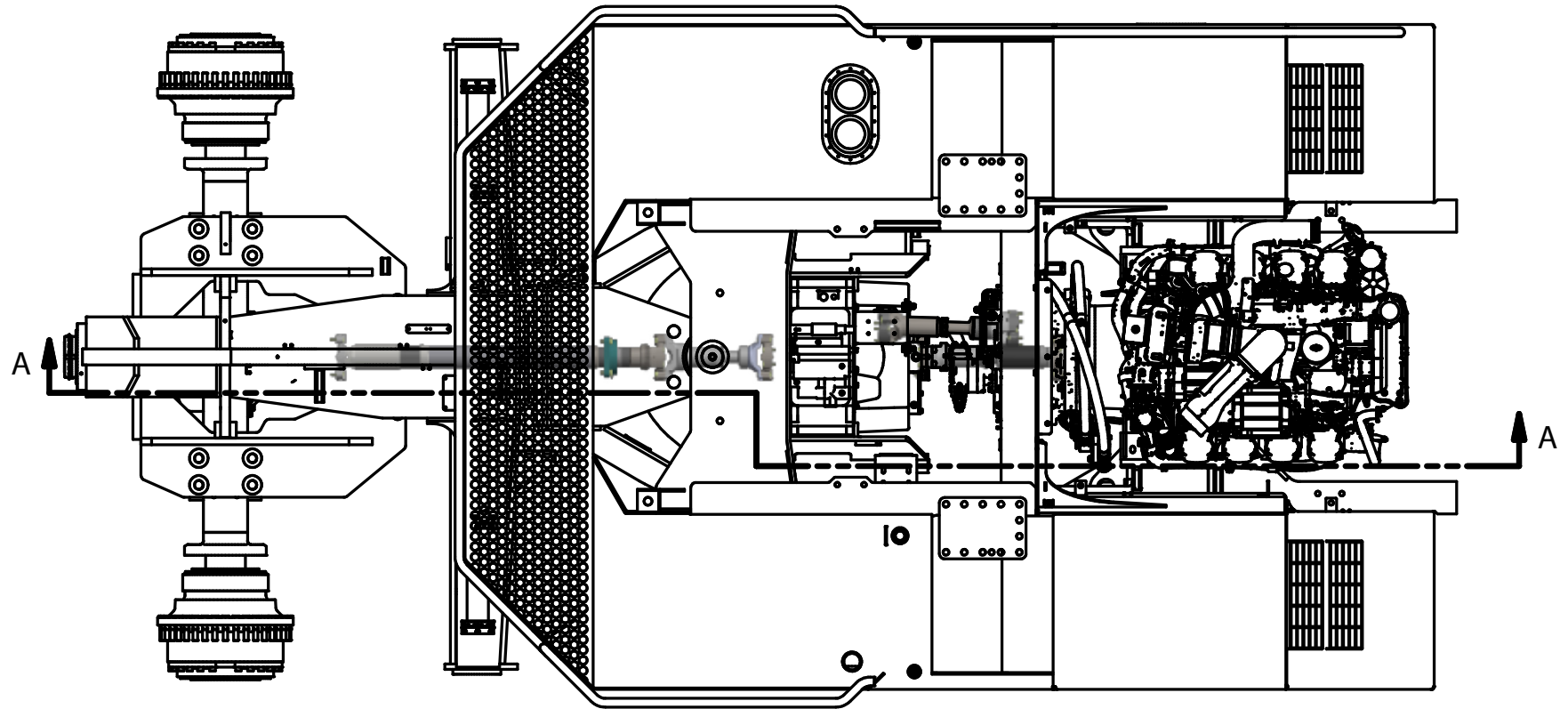
Driveline Installation

Item	Part No.	Qty	Description	Item	Part No.	Qty	Description
	600945		Driveline Installation				
1	* 601044	1	. Driveline Assembly	8	234271	12	. Washer
2	* 601144	1	. Driveline Assembly	9	Y17C-1032	8	. Capscrew
3	* 601143	1	. Driveline Assembly	10	221575W	20	. Capscrew
4	* 598443	1	. Driveline Assembly	11	221577W	8	. Capscrew
5	222662	1	. Bearing	12	598788	1	. Plate
6	601169	1	. Spacer	13	Y17D-10	4	. Nut
7	601170	1	. Spacer	14	598789	1	. Driveline Guard

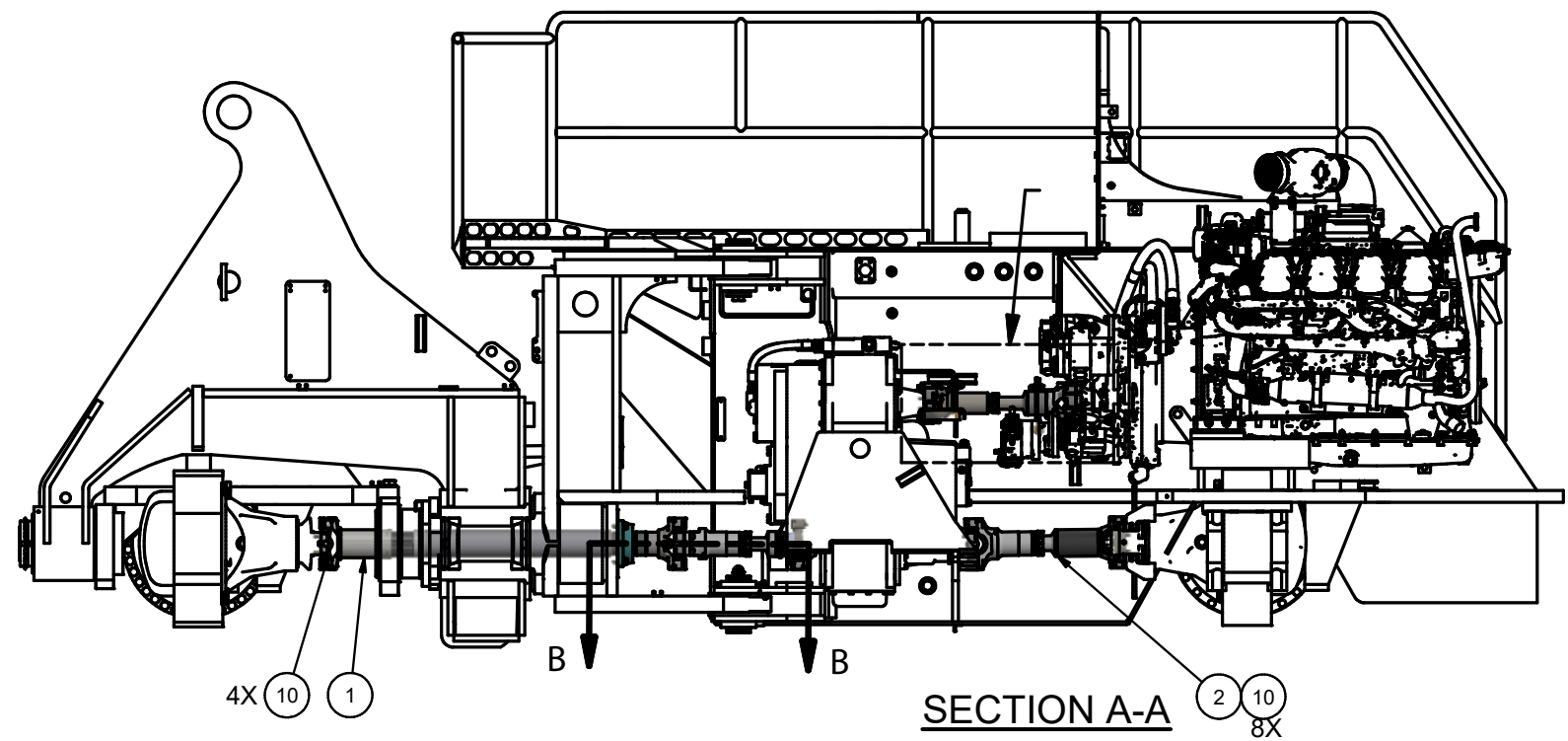
* See Separate Coverage



DETAIL B



SECTION B-B



SECTION A-A

NOTES:

- 1 TORQUE YOKE TO 380-400 FT-LBS AFTER BEARING ASSEMBLY INSTALLATION
- 2 CONFIRM AND VERIFY YOKE FACE TO ARTICULATION CENTERLINE DISTANCE