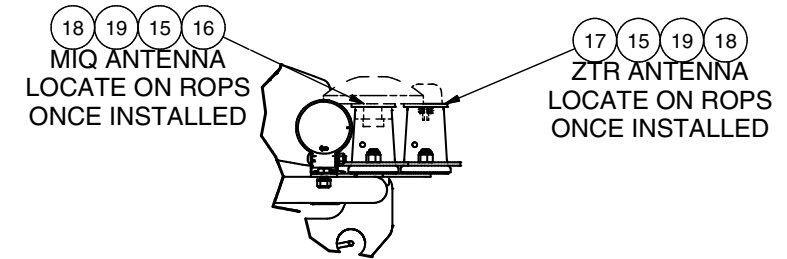
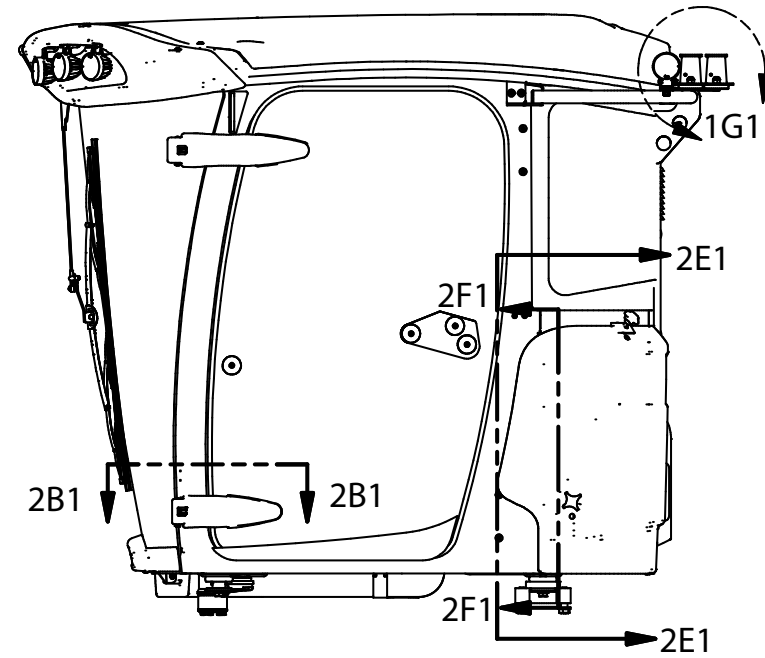
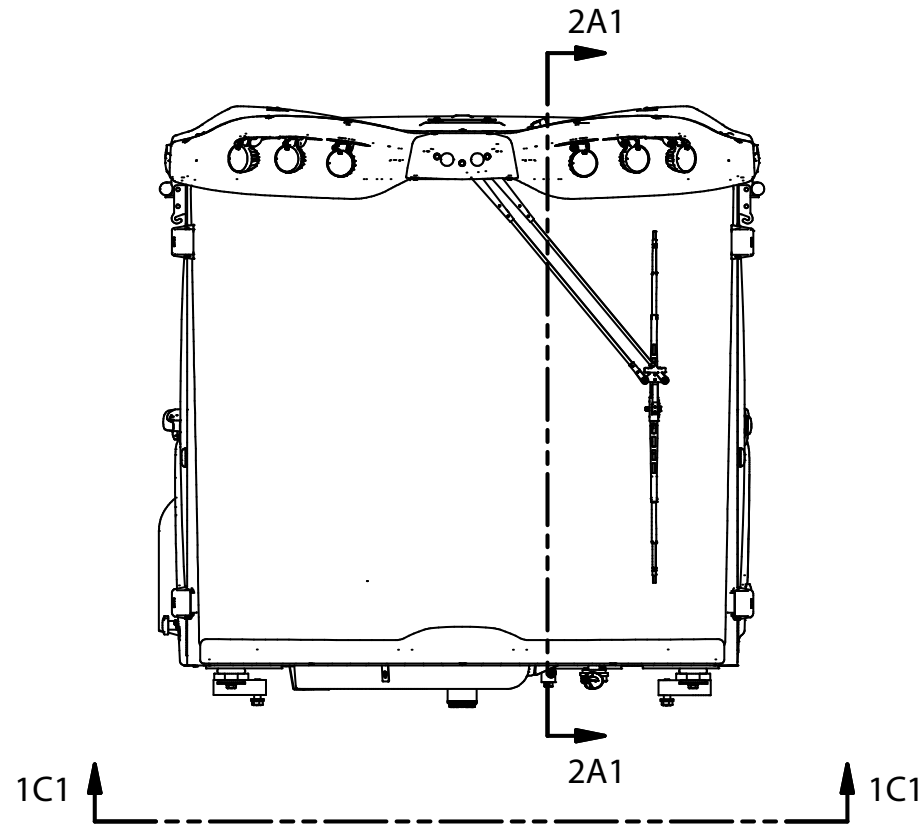
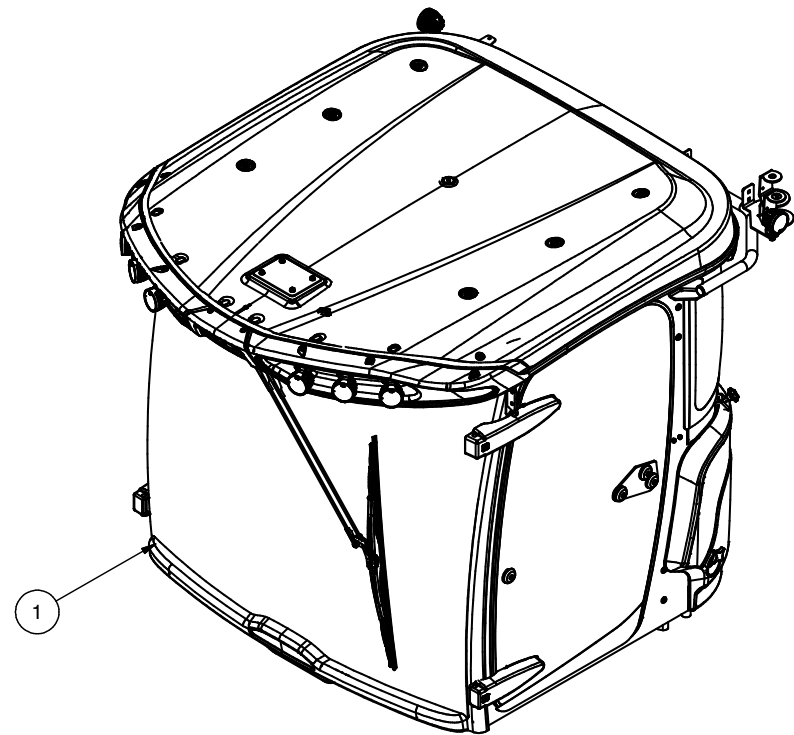

Cab Assembly

Cab Assembly

Item	Part No.	Qty	Description	Item	Part No.	Qty	Description
	600938		Cab Assembly				
1	*a 601006	1	. Cab	27	296420W	3	. Washer
2	*a 252512	1	. Valve, Steering	28	293629W	3	. Capscrew
3	597623	1	. Wagner Smart Screen	29	287816W	3	. Capscrew
4	*a 246923	1	. Throttle Assembly	30	296417W	7	. Washer
5	*a 597709	1	. Valve, Hydraulic Brake	31	Y09C-M0616	4	. Capscrew
6	*a 601008	1	. Assembly, Remote Monitor	32	557376	4	. Washer
7	254837	2	. Module, Expansion	33	296153W	4	. Capscrew
8	234264	1	. Control Unit	34	296416W	4	. Washer
9	GAG0001133	1	. Hour Meter	35	296418W	2	. Washer
10	R10547	1	. Buzzer	36	296166W	2	. Capscrew
11	571430	1	. Decal, Warning, Parking Brake	37	597433	1	. Bracket, Mount Monitor
12	243476	1	. Cover, Dust	38	600744	1	. Bracket, Monitor Mount
13	568472	1	. Light - 24VDC	39	81146	8	. Capscrew
14	224222	4	. Vibration Dampener	40	65292	4	. Hex Nut
15	257424	2	. Magnet	41	601707	1	. Bracket
16	600080	1	. Bracket	42	79603	1	. Module, Expansion
17	591002	1	. Bracket	43	197066W	2	. Washer
18	221560W	2	. Capscrew	44	84765-1.000	2	. Capscrew
19	223587	2	. Lock Nut	45	15039W	2	. Nut
20	597100	2	. Cab Mount	46	*b 601868	1	. Decal, Cab Fuse Box
21	243626	4	. Capscrew	47	*b 600268	3	. Fuse - Auto Mini, 3 Amp
22	296426W	4	. Washer	48	*b 2313417	10	. Fuse - Auto Mini, 5 Amp
23	221657W	4	. Capscrew	49	*b 597379	14	. Fuse - Auto Mini, 10 Amp
24	221777W	4	. Washer	50	*b 597380	9	. Fuse - Auto Mini, 15 Amp
25	597249	2	. Channel	51	*b 597381	4	. Fuse - Auto Mini, 20 Amp
26	Y73G-0620	4	. Capscrew	52	*b 597377	10	. Relay, Micro, 24V, SPDT

*a See Separate Coverage

*b Not Illustrated



DETAIL 1G1
KEEP ANTENNAS
MINIMUM 10" APART

