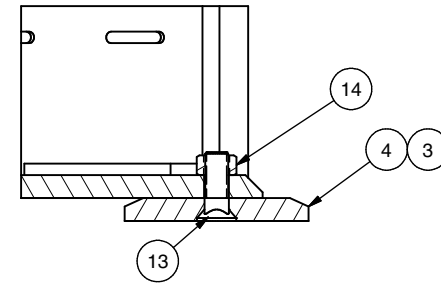
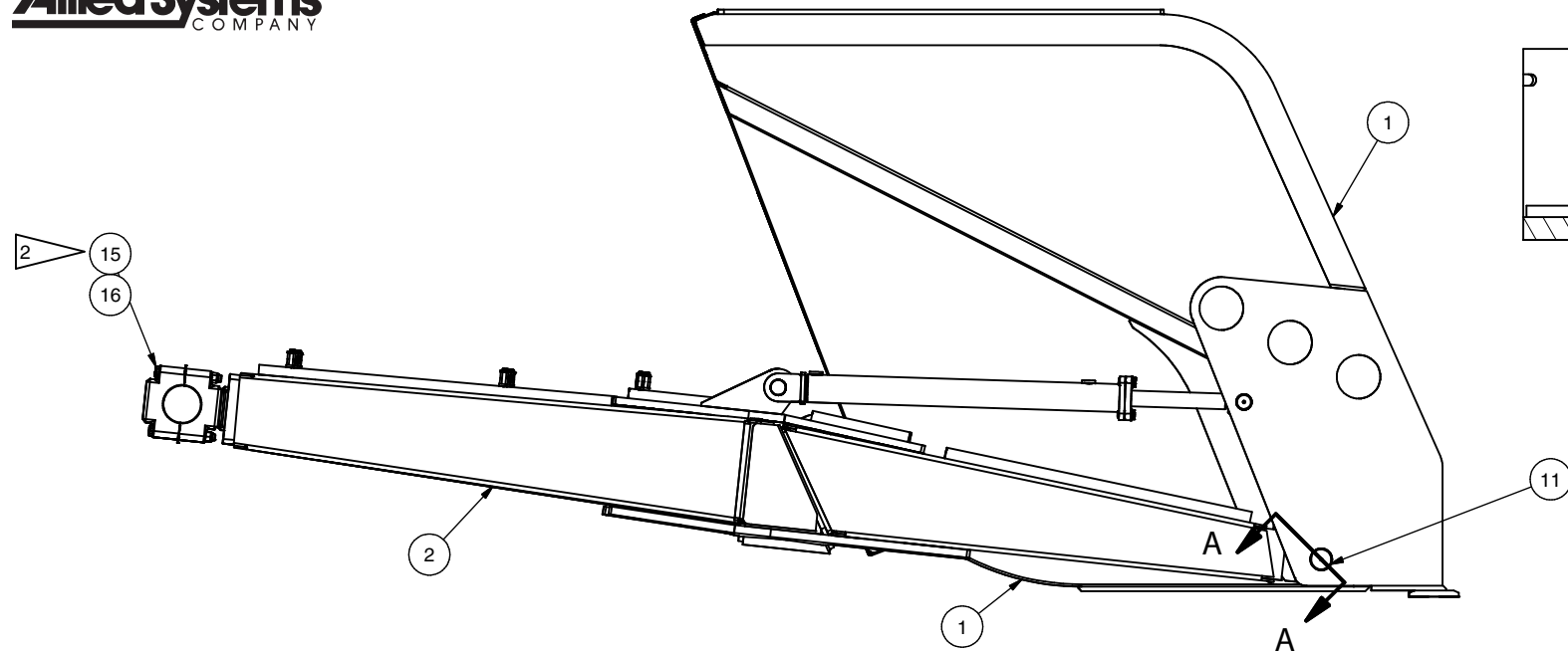

Bucket & Lift Arm

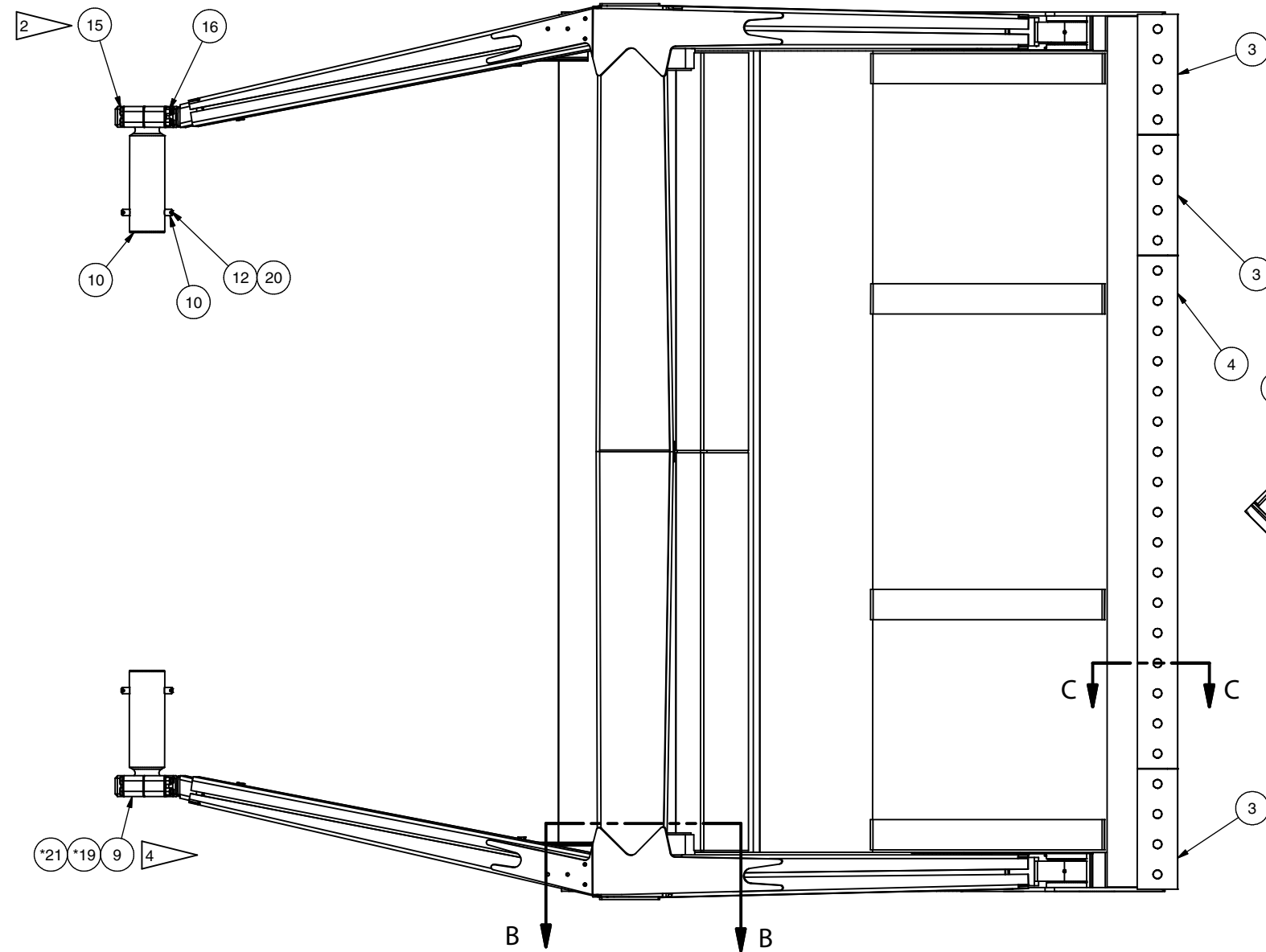
Bucket & Lift Arm

| Item | Part No. | Qty | Description | Item | Part No. | Qty | Description |
|------|---------------|-----|------------------------------|------|------------|-----|--------------------|
| | 600937 | | Bucket & Lift Arm | | | | |
| 1 | 601016 | 1 | . Bucket | 13 | 224739 | 29 | . Bolt |
| 2 | 601032 | 1 | . H-Frame | 14 | 221720W | 29 | . Hex Nut |
| 3 | 556606 | 3 | . Blade | 15 | Y17C-16160 | 8 | . Capscrew |
| 4 | 556604 | 1 | . Blade | 16 | R13803587 | 8 | . Locknut |
| 5 | Y2VS-4X13.88 | 2 | . Plate | 17 | Y17C-1032 | 2 | . Capscrew |
| 6 | Y38VS-4X7.25 | 2 | . Plate | 18 | 234271 | 2 | . Washer |
| 7 | 585893 | 2 | . Plate | 19 | NA | - | . Not Used |
| 8 | 529651 | 2 | . Pin | 20 | 15113W | 4 | . Locknut |
| 9 | 541325 | 2 | . Cap Trunnion | 21 | NA | - | . Not Used |
| 10 | 530105 | 2 | . Pin | 22 | 601999 | A/R | . Shim, Bucket .38 |
| 11 | 601030 | 2 | . Pin | 23 | 602000 | A/R | . Shim, Bucket .25 |
| 12 | R13810996 | 4 | . Capscrew | 24 | 602001 | A/R | . Shim, Bucket .13 |

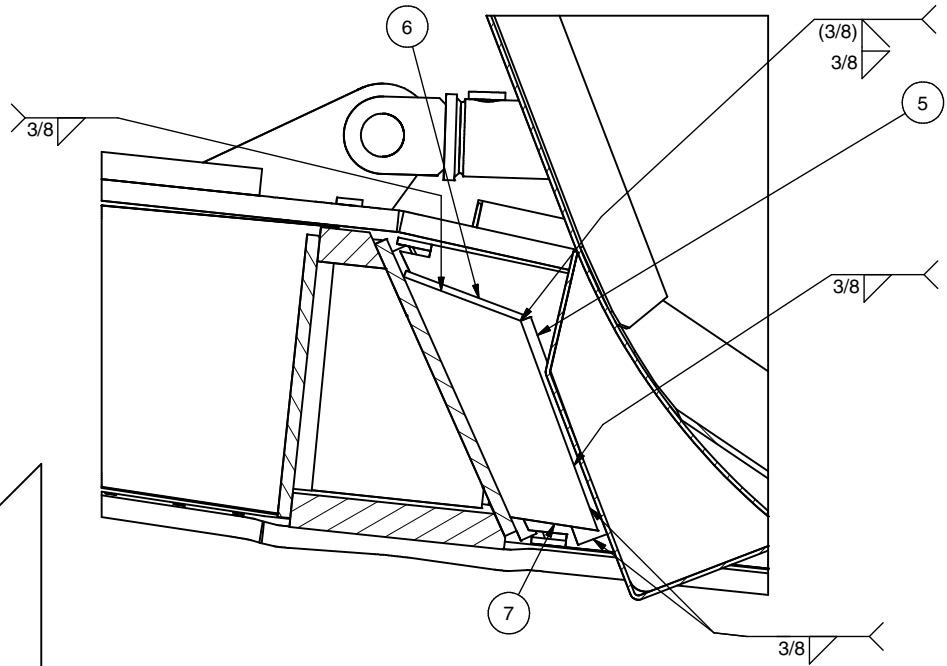
A/R As Required



SECTION C-C



SECTION A-A
BUCKET PIN



SECTION B-B
BOTH SIDES MIRROR IMAGE
REMOVED BUCKET & CYL
FOR CLARITY

- 1 **SETTING BUCKET STOPS:**
SET THE FRONT EDGE OF THE BOLT ON BUCKET BLADES DOWN ON 1" BLOCKS.
SET REAR MOST EDGE OF THE BUCKET WEAR PLATES ON THE GROUND.
EXTEND THE DUMP CYLINDERS 1/8-1/4" EACH.
SET BUCKET STOPS WHERE ITEM 5 HAS MAX CONTACT WITH THE BUCKET
WELD BUCKET STOPS AS SHOWN.
- 2 **TORQUE CAPSCREWS TO: 680 - 750 Ft.Lbs.**
- 3 **USE SHIMS TO MAINTAIN TOTAL GAP OF .13 ± .06 BETWEEN FRAME AND BUCKET**
- 4 **INSTALL CAPS WITHOUT SHIMS AND TORQUE TO 37-40 FT-LBS.**
THE GAP AT THE TOP AND BOTTOM NEED TO BE UNIFORM.
MEASURE THE GAP AT THE TOP AND BOTTOM.
INSTALL THE SHIM STACK WITH ONE ADDITIONAL .030 SHIM IN EACH LOCATION