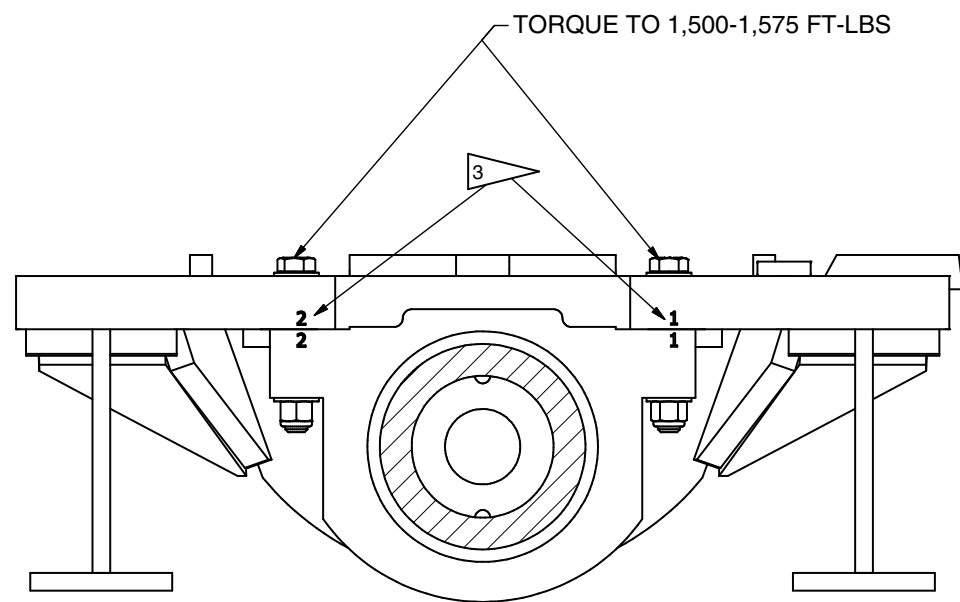
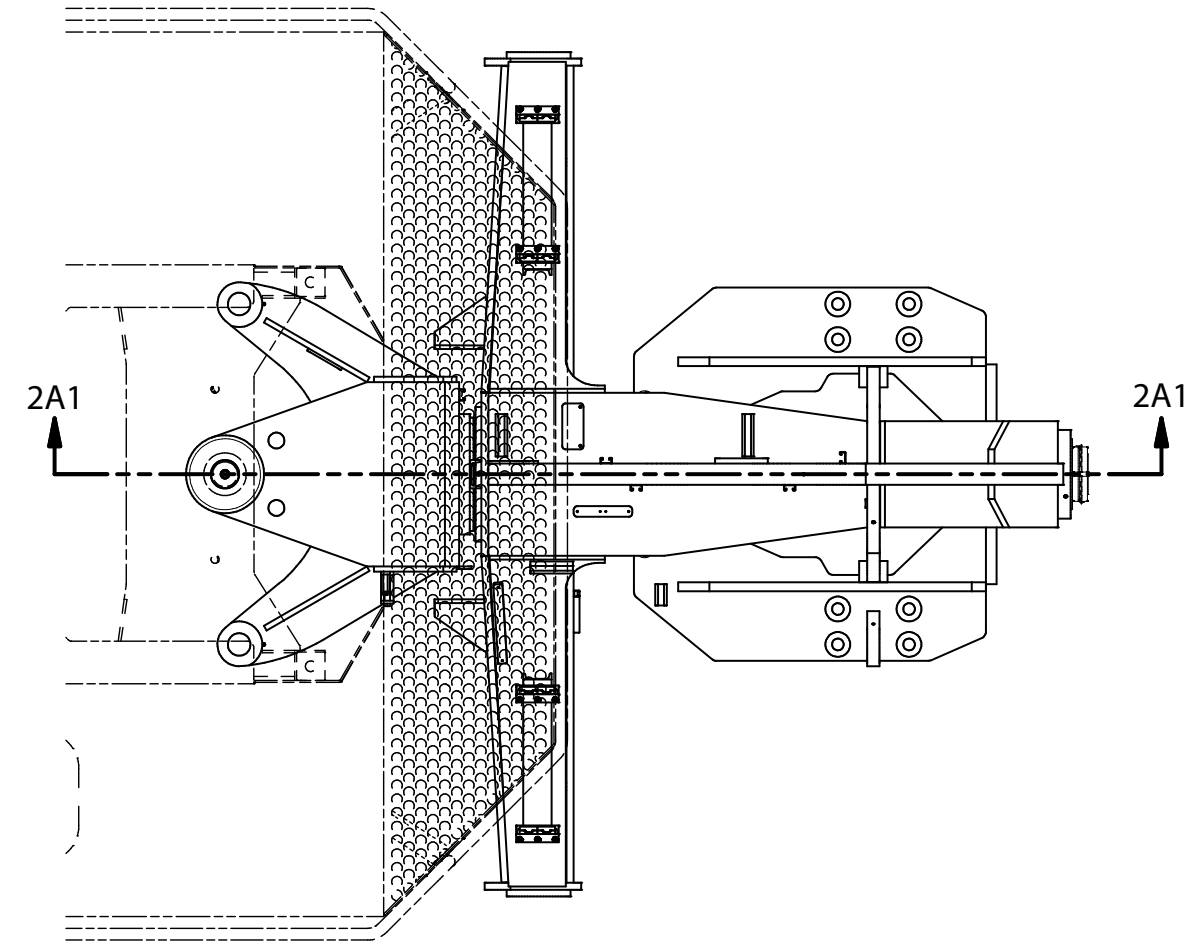

Swivel/Bogie/Cradle Installation

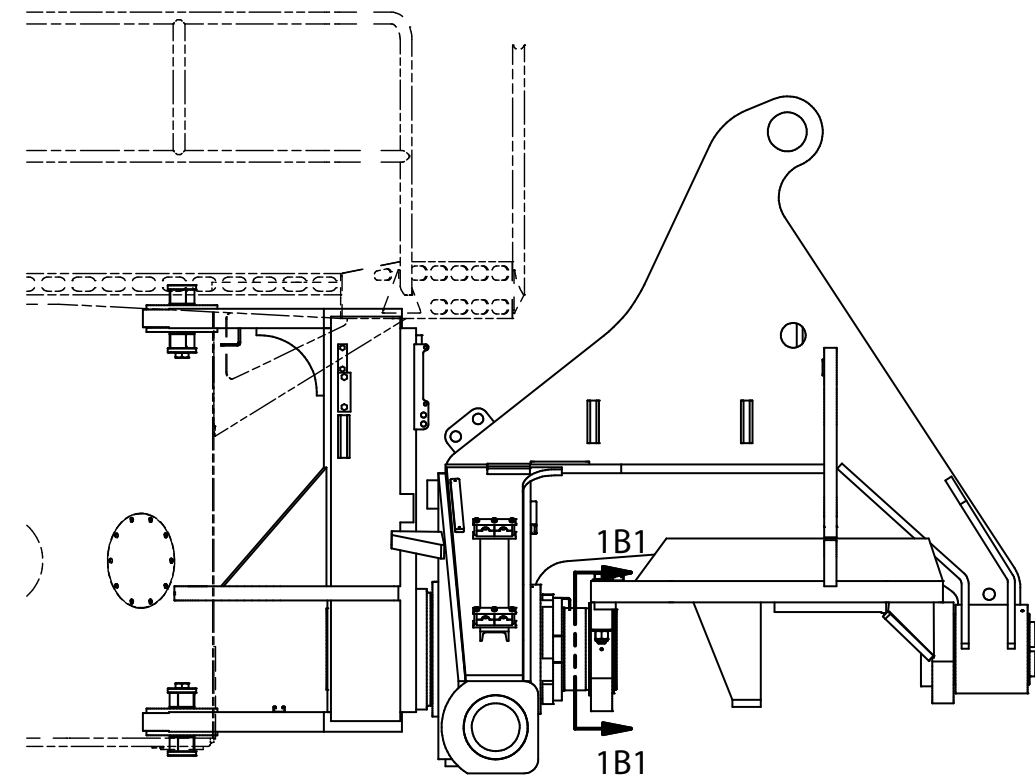
Swivel/Bogie/Cradle Installation

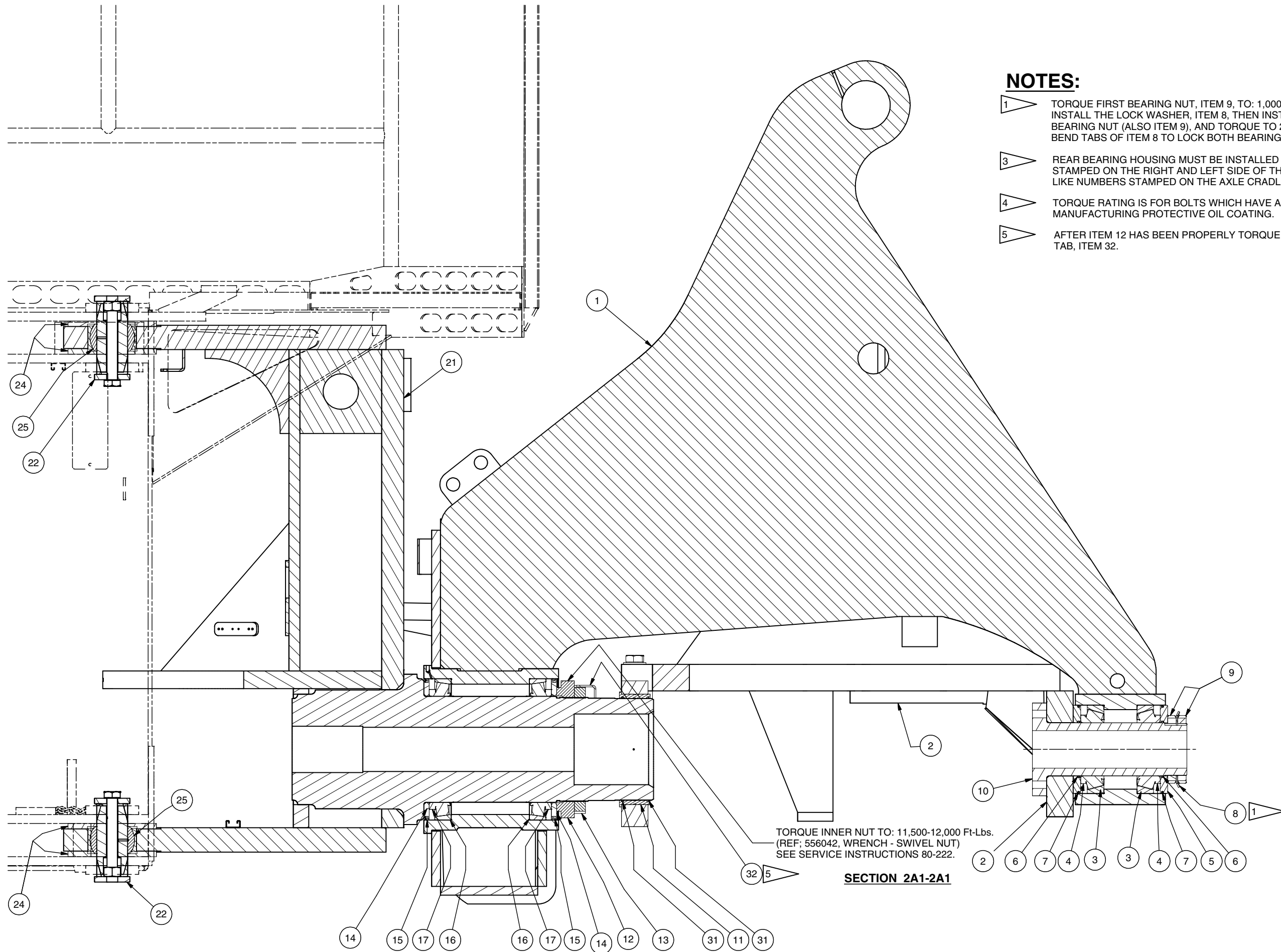
Item	Part No.	Qty	Description	Item	Part No.	Qty	Description
	600936		Swivel/Bogie/Cradle Installation				
1	600966	1	. Bogie	13	501874	1	. Nut
2	* 600967	1	. Axle Cradle	14	556836	2	. Plate
3	204602	2	. Bearing Cup	15	203506	2	. O-Ring
4	232647	2	. Bearing Cone	16	204605	2	. Bearing Cup
5	567601	2	. Plate, Seal	17	200219	2	. Bearing Cone
6	224224	2	. O-Ring	21	600968	1	. Swivel Box
7	234539	2	. O-Ring	22	601804	2	. Pin, Pivot
8	207510	1	. Lockwasher	24	500093	4	. Washer
9	207504	2	. Locknut	25	214314	2	. Bearing
10	567599	1	. Pin, Bogie	31	232315	2	. O-Ring
11	567521	1	. Bushing	32	573744	1	. Plate
12	556837	1	. Nut				

* See Separate Coverage



SECTION 1B1-1B1





NOTES:

- 1 TORQUE FIRST BEARING NUT, ITEM 9, TO: 1,000 - 1,100 FT-LBS, INSTALL THE LOCK WASHER, ITEM 8, THEN INSTALL THE SECOND BEARING NUT (ALSO ITEM 9), AND TORQUE TO 250 FT-LBS. BEND TABS OF ITEM 8 TO LOCK BOTH BEARING NUTS;
- 3 REAR BEARING HOUSING MUST BE INSTALLED SO THE NUMBERS STAMPED ON THE RIGHT AND LEFT SIDE OF THE PART MATCH WITH LIKE NUMBERS STAMPED ON THE AXLE CRADLE, ITEM.2.
- 4 TORQUE RATING IS FOR BOLTS WHICH HAVE A RESIDUAL MANUFACTURING PROTECTIVE OIL COATING.
- 5 AFTER ITEM 12 HAS BEEN PROPERLY TORQUED, INSTALL LOCK TAB, ITEM 32.