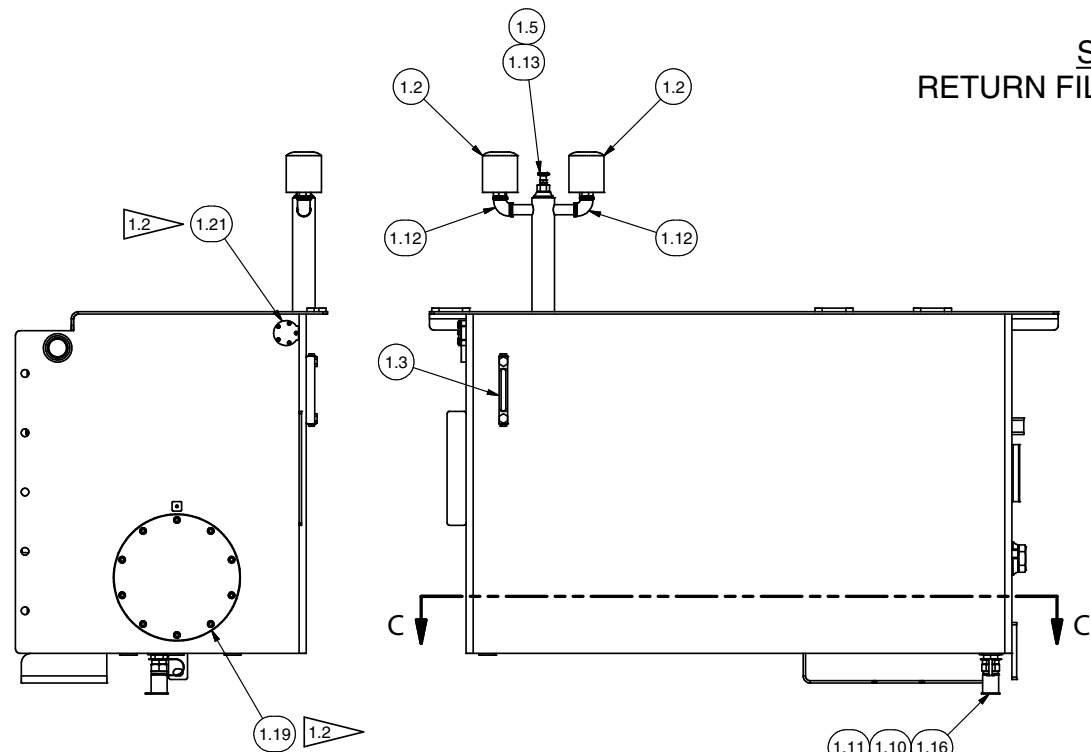
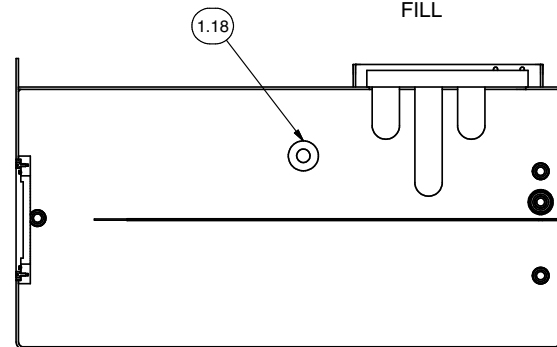


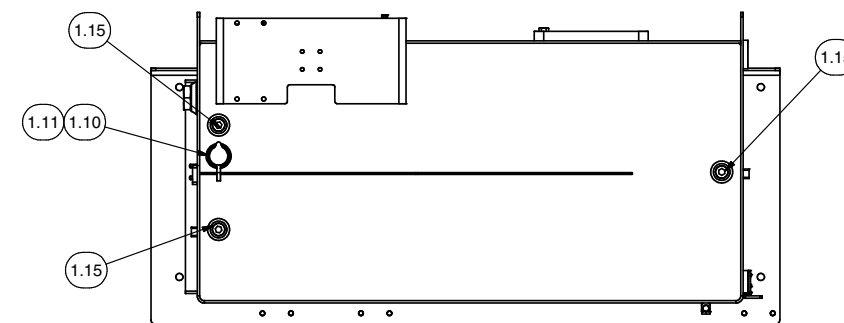
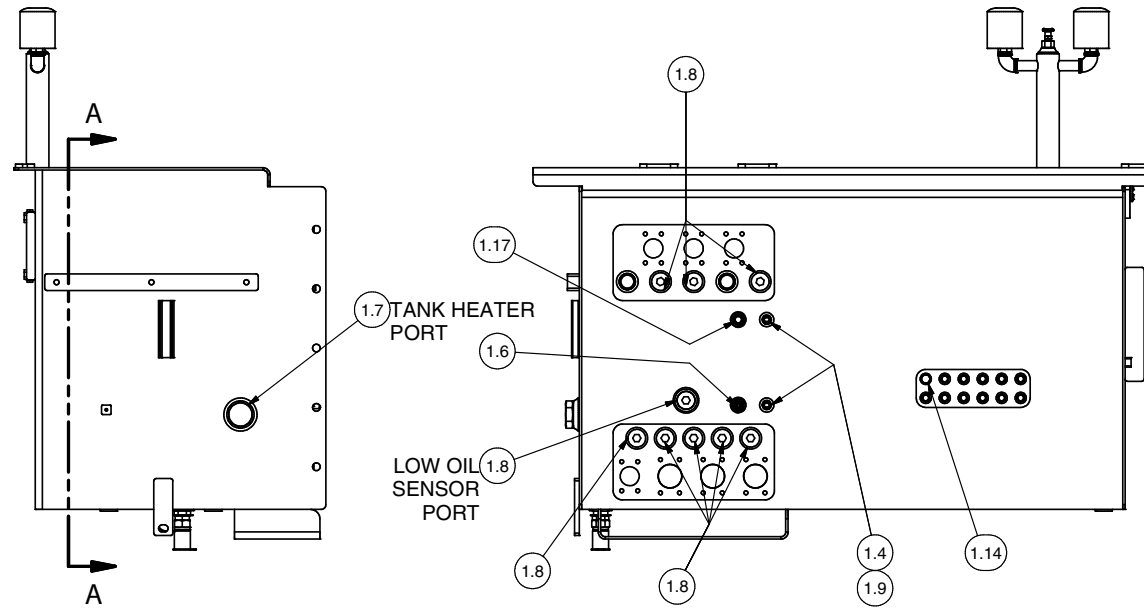
**SECTION A-A**  
RETURN FILTERS IN RETURN BOX



1.11 1.10 1.16  
**PRESSURIZED TANK FILL**



**SECTION C-C**



Item	Part No.	Qty	Description
<b>600878 Hydraulic System - Tank</b>			
1.1	* 600875	2	. Filter, Tank Return
1.2	224744	2	. Breather Assembly
	230463	1	. Element
1.3	17100018	1	. Gauge, Sight Level
1.4	598718	2	. Transducer, Pressure
1.5	209505	1	. Fitting
1.6	251424	1	. Sensor, Temp
1.7	227042	1	. Fitting
1.8	229389	9	. Fitting
1.9	26837	2	. Fitting
1.10	240395	1	. Coupler, Male
1.11	209078	1	. Fitting
1.12	00119099	2	. Elbow, Pipe
1.13	211398	1	. Draincock
1.14	210709	1	. Fitting
1.15	R565295	3	. Plug, Magnetic
1.16	257794	1	. Cap, Dust (Rubber)
1.17	209916	1	. Fitting
1.18	R525293	1	. Magnet, Ceramic
1.19	203496	1	. O-Ring
1.20	562468	1	. Gasket
1.21	600582	1	. Gasket, Sending Unit

\* See Separate Coverage

NOTES:

1.1 - SEE CHASSIS INSTALLATION FOR HYDRAULIC TANK INSTALLATION ONTO CHASSIS.

1.2 SEE HYDRAULIC TANK WELDMENT FOR COVERS AND HARDWARE PART NUMBERS.