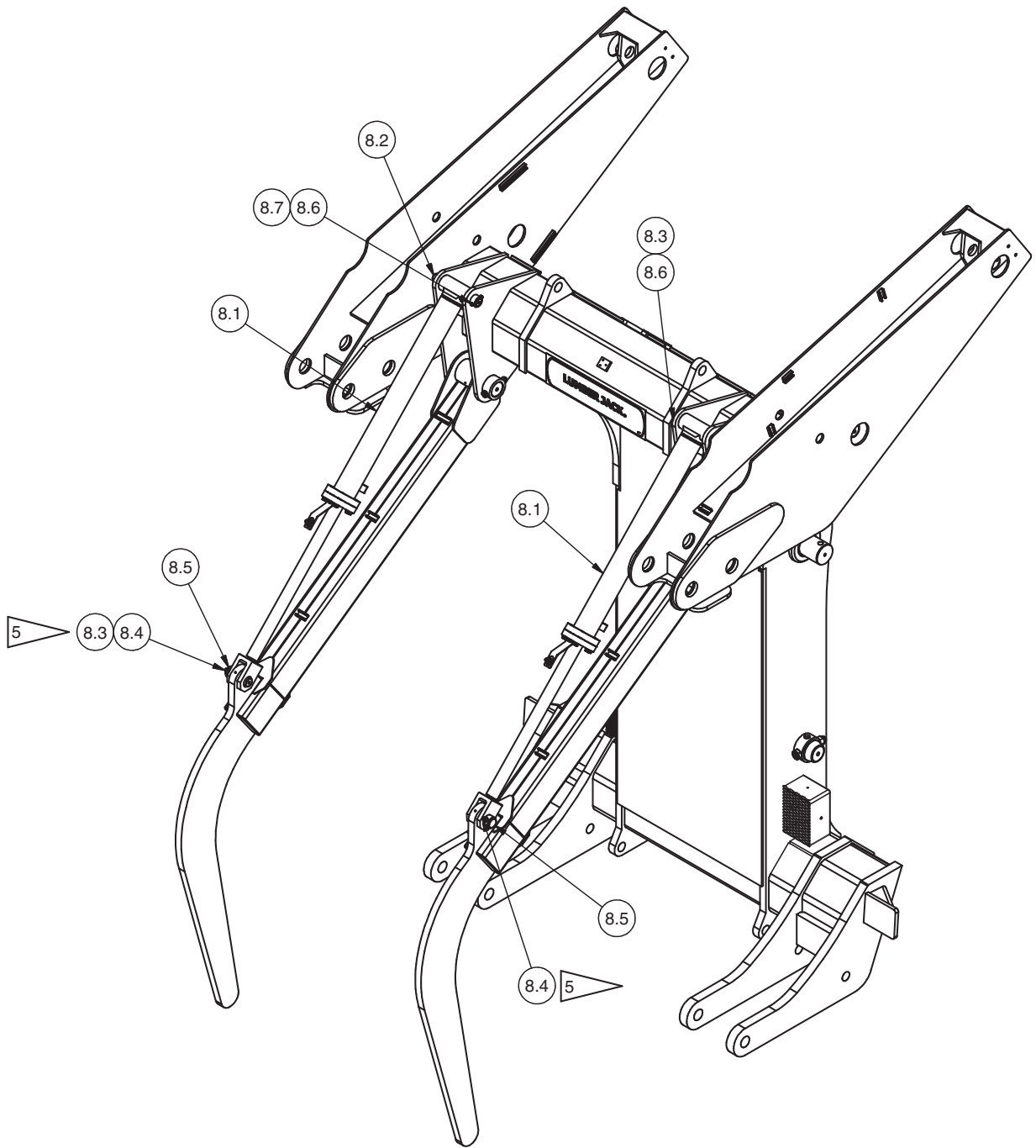


Aux Holddown Cylinder Installation



NOTES:

- 1. TORQUE ALL BOLTS TO 80-1057
- REMOVE DIRT, LOOSE SCALE, AND BURRS FROM MATING SURFACES OF BOLTED JOINTS.

ORIENTATE CYLINDER LOCKCOLLARS OUTBOARD OF MACHINE.

Item	Part No.	Qty	Description	Item	Part No.	Qty	Description
<b>600846 Aux HD Cylinder Installation</b>							
8.1	* 600666	2	. Cylinder, Assembly	8.5	558325	2	. Pin
8.2	598679	2	. Pin	8.6	R13811193	2	. Locknut
8.3	R13811196	2	. Locknut	8.7	R13811083	2	. Capscrew
8.4	Y17C-1272	2	. Capscrew				

\* See Separate Coverage