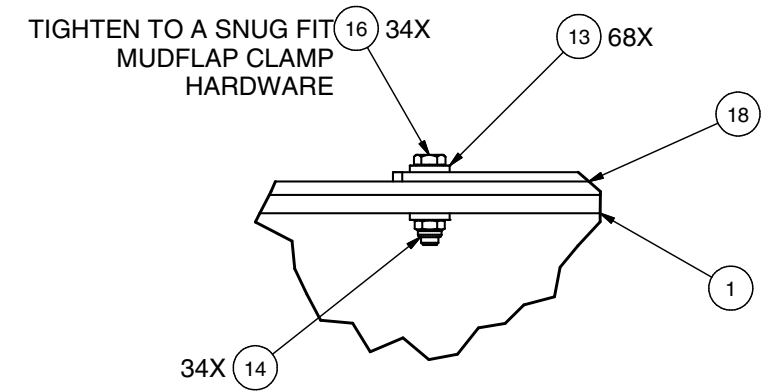
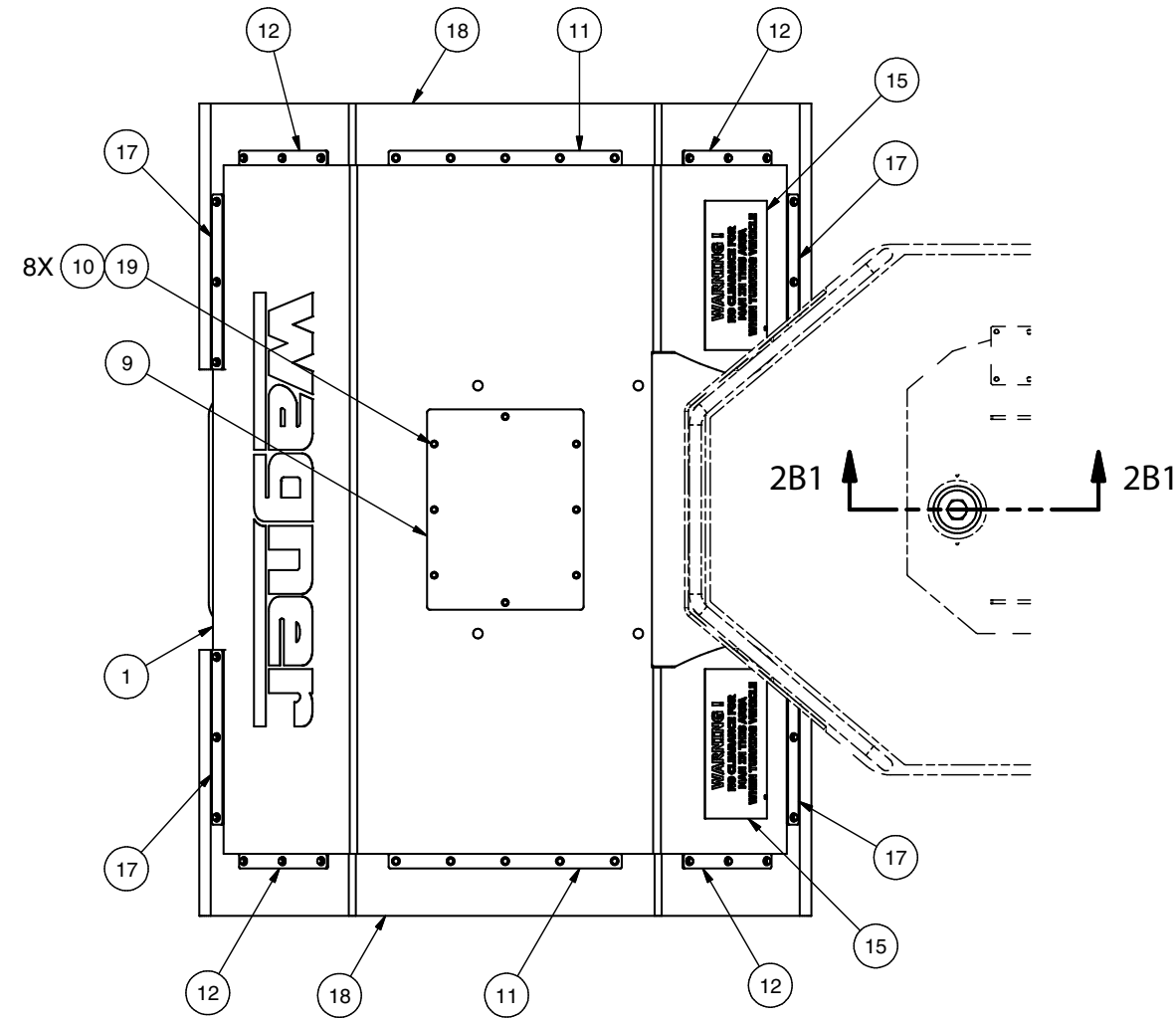


---

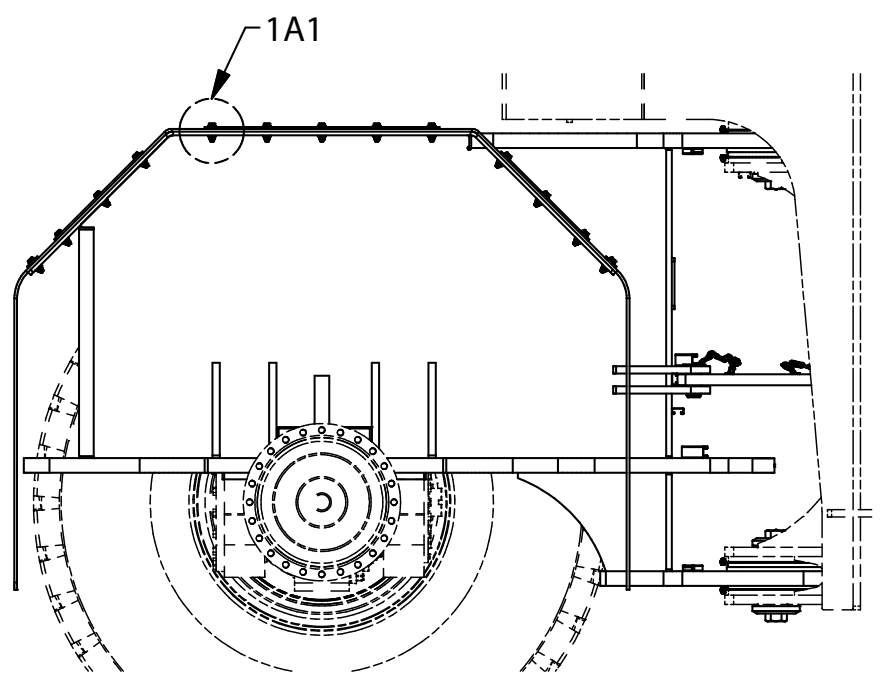
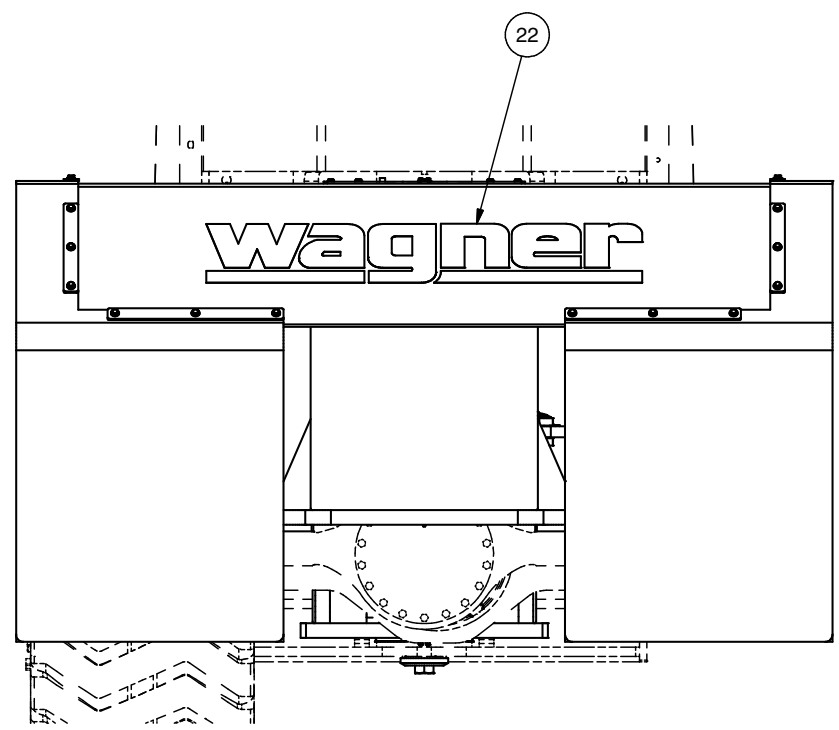
Bogie Installation

## Bogie Installation

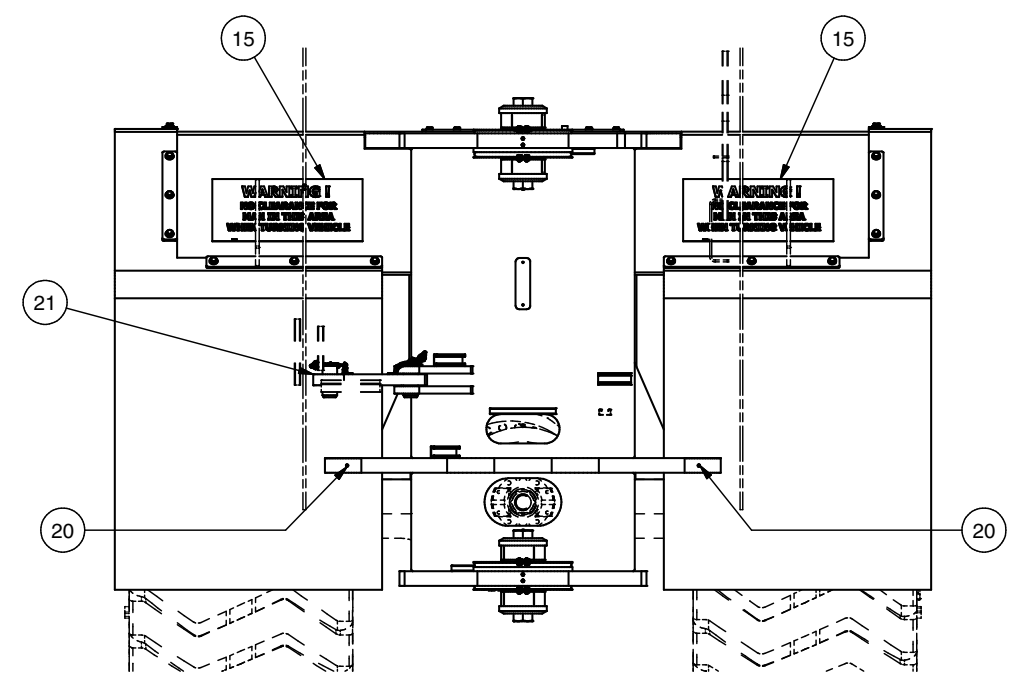
Item	Part No.	Qty	Description	Item	Part No.	Qty	Description
	<b>600377</b>		<b>Bogie Installation</b>				
1	600379	1	. Bogie	12	595249	4	. Plate, Clamp
2	581537	2	. Pin, Pivot	13	221771W	68	. Washer
3	601040	2	. Kit, Bogie Shim (10 GA)	14	302402W	34	. Locknut
4	203498	4	. O-Ring	15	545430	2	. Decal, Warning-No Clearance
5	550329	4	. Seal, Dirt	16	252864	34	. Capscrew
6	580156	4	. Washer, Thrust	17	594807	4	. Plate, Clamp
7	601041	2	. Kit, Bogie Shim (16 GA)	18	598155	2	. Mud Flap, Rear
8	563163	2	. Bushing	19	R13811210	8	. Capscrew
9	598154	1	. Plate, Ballast Cover	20	R13801760	4	. Fitting
10	R13811432	8	. Washer	21	598158	1	. Articulation Lock
11	594805	2	. Plate, Clamp	22	590995	1	. Decal, Wagner

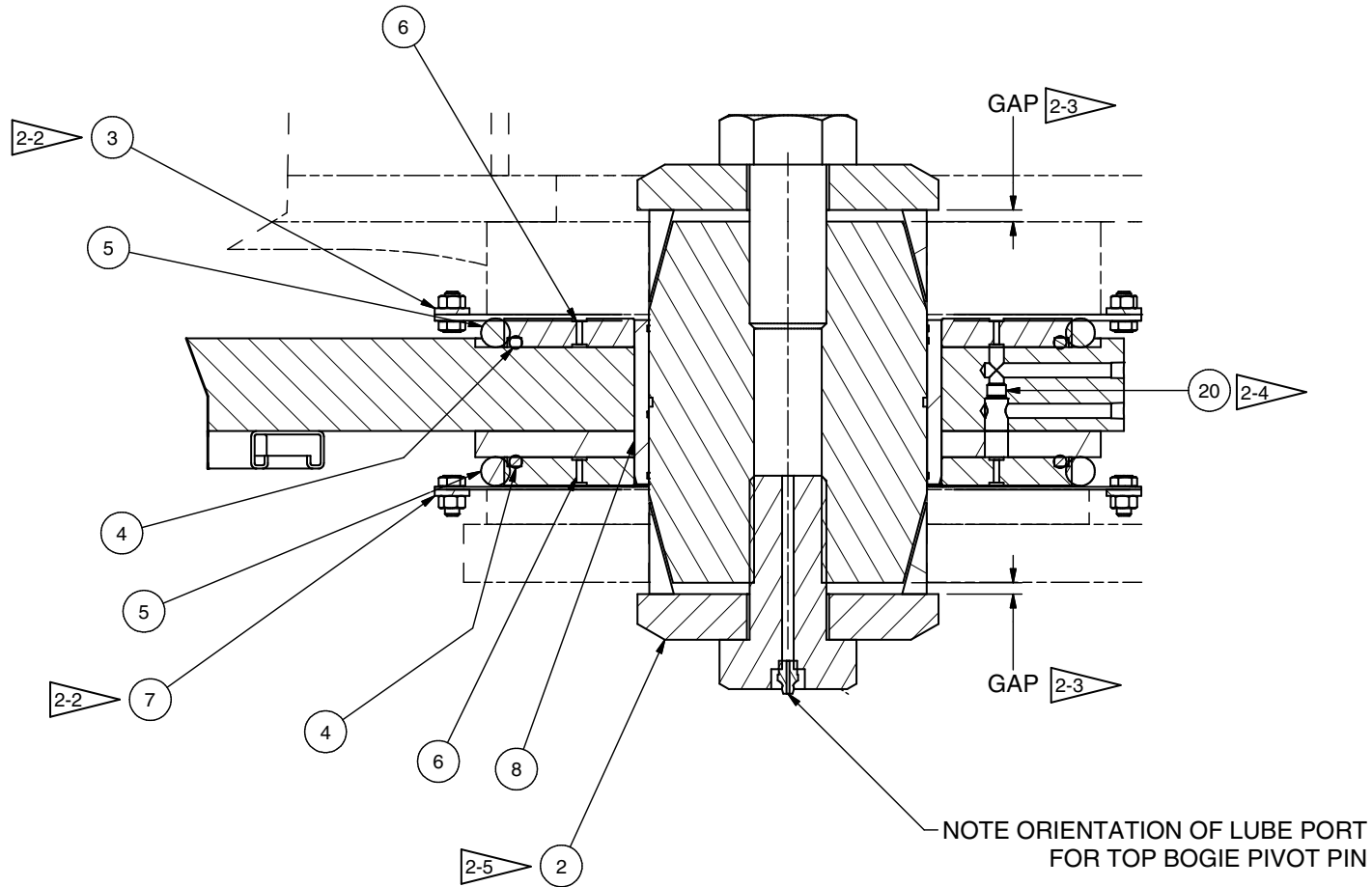
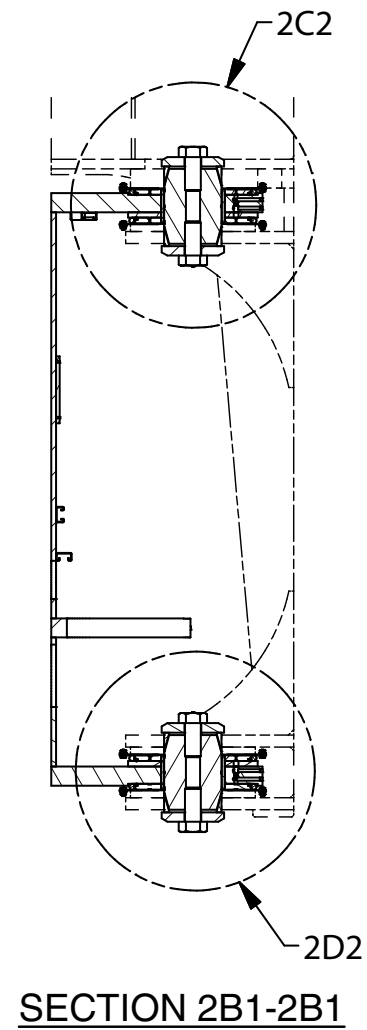


**DETAIL 1A1**  
MUD FLAP CLAMP HARDWARE  
TYP. INSTALLATION

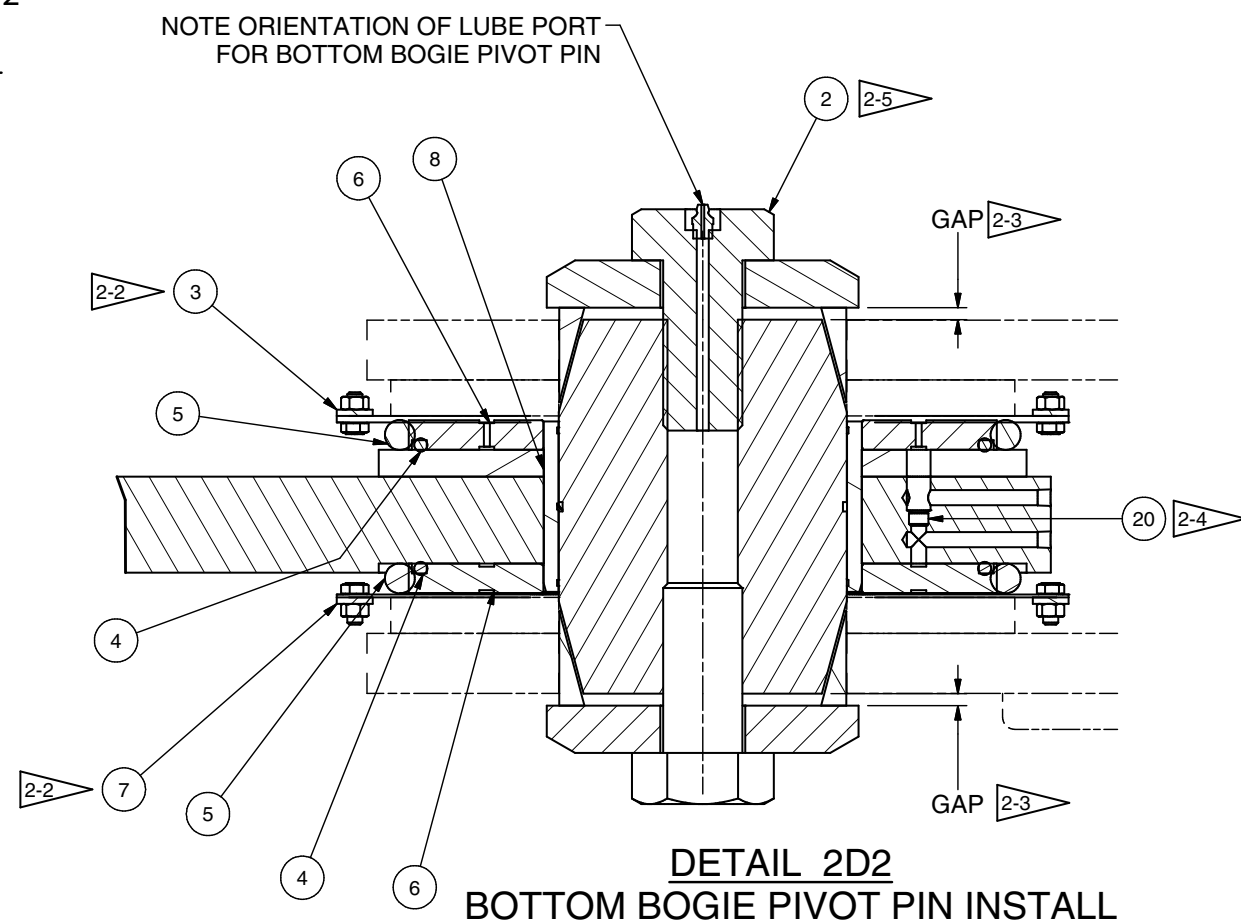


**NEAREST WHEEL & TIRE  
REMOVED FOR CLARITY**





**DETAIL 2C2  
TOP BOGIE PIVOT PIN INSTAL**



**DETAIL 2D2  
BOTTOM BOGIE PIVOT PIN INSTAL**

- NOTES:**
- TORQUE HARDWARE PER 80-1057.
- 2-2 SHIM AS REQUIRED SO THE CLEARANCE DOES NOT EXCEED 1/16".
  - 2-3 INSTALL PIN. GAP REQUIRED TOP & BOTTOM SEE INSTALLATION INSTRUCTIONS 80-222.
  - 2-4 INSTALL ITEM 20 PRIOR TO INSTALLING BOGIE.
  - 2-5 TORQUE AS INSTRUCTED IN INSTALLATION INSTRUCTIONS 80-222.