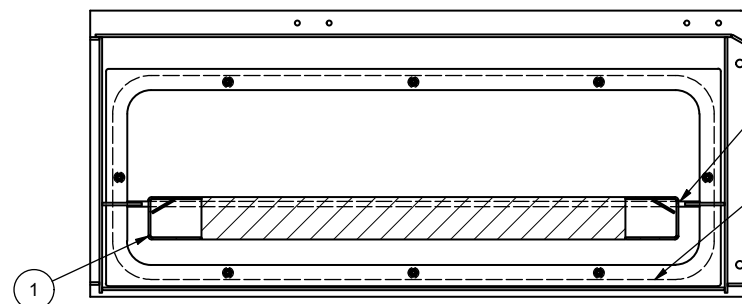
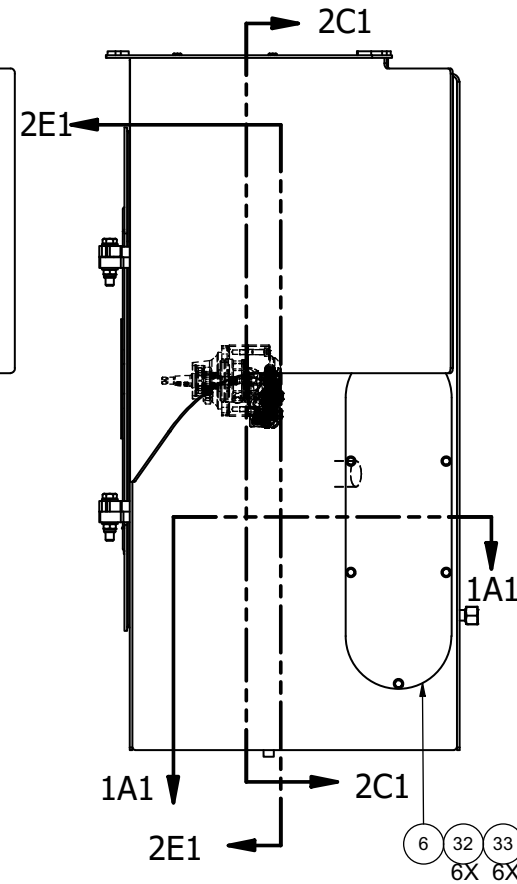
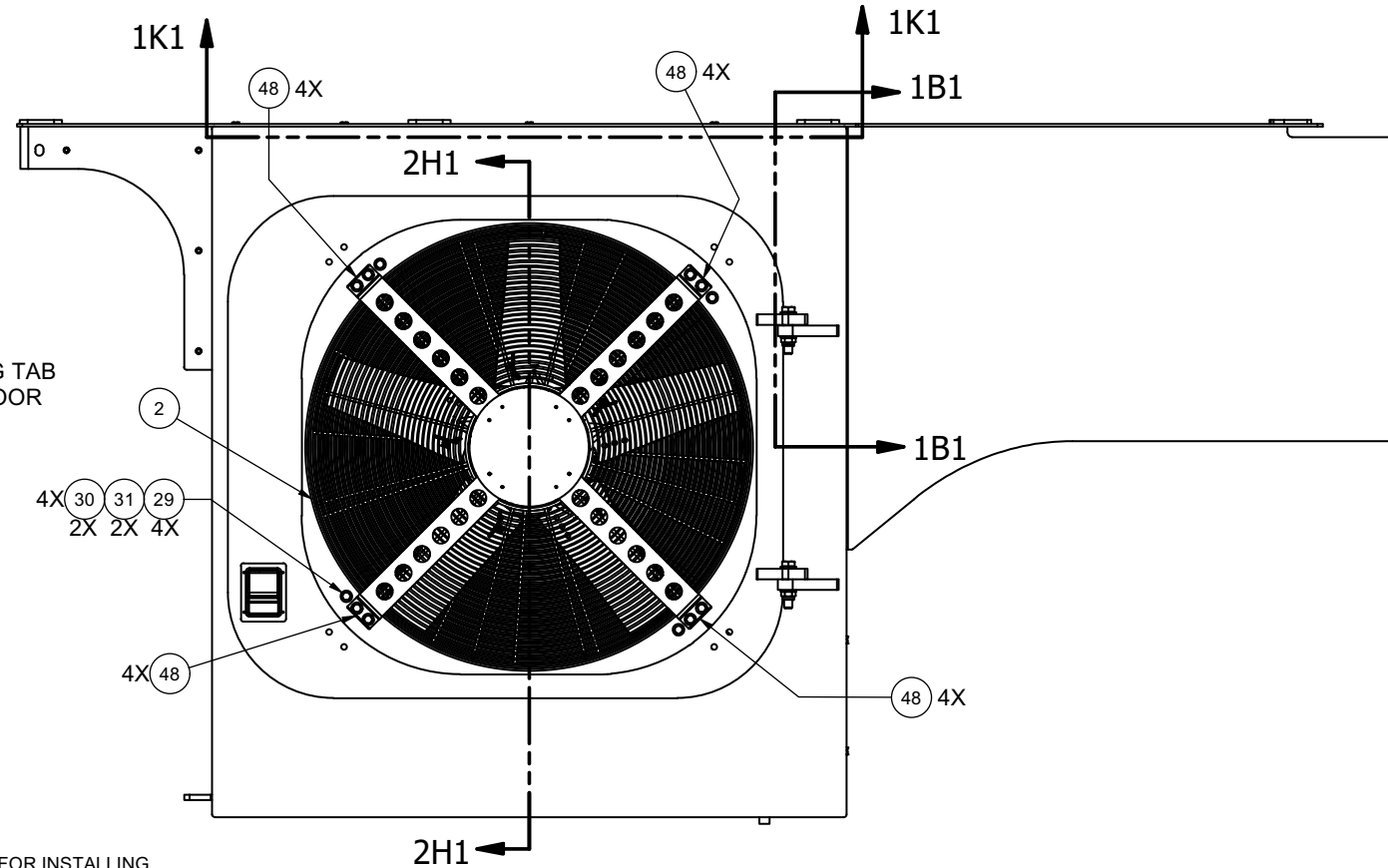
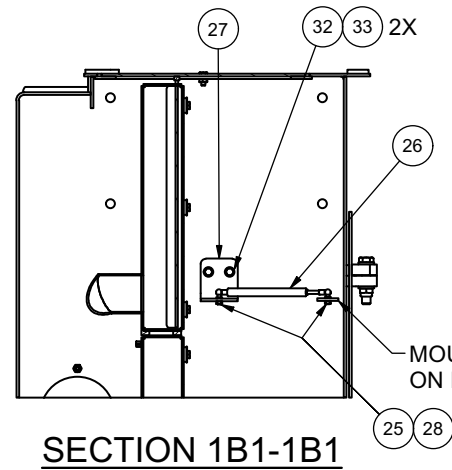
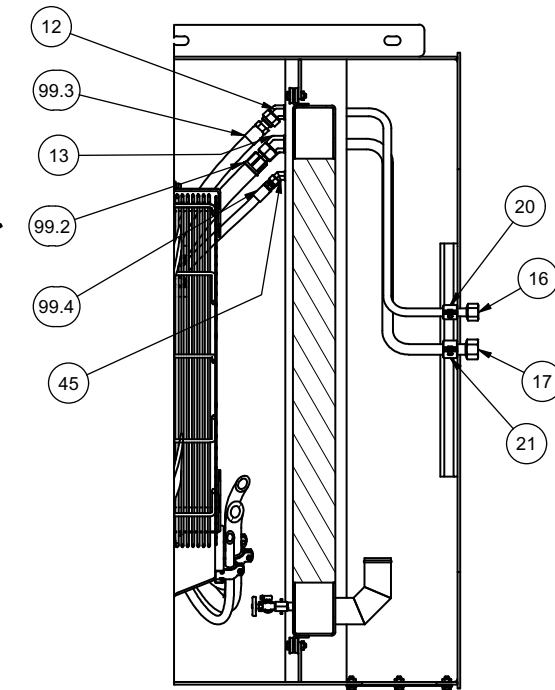
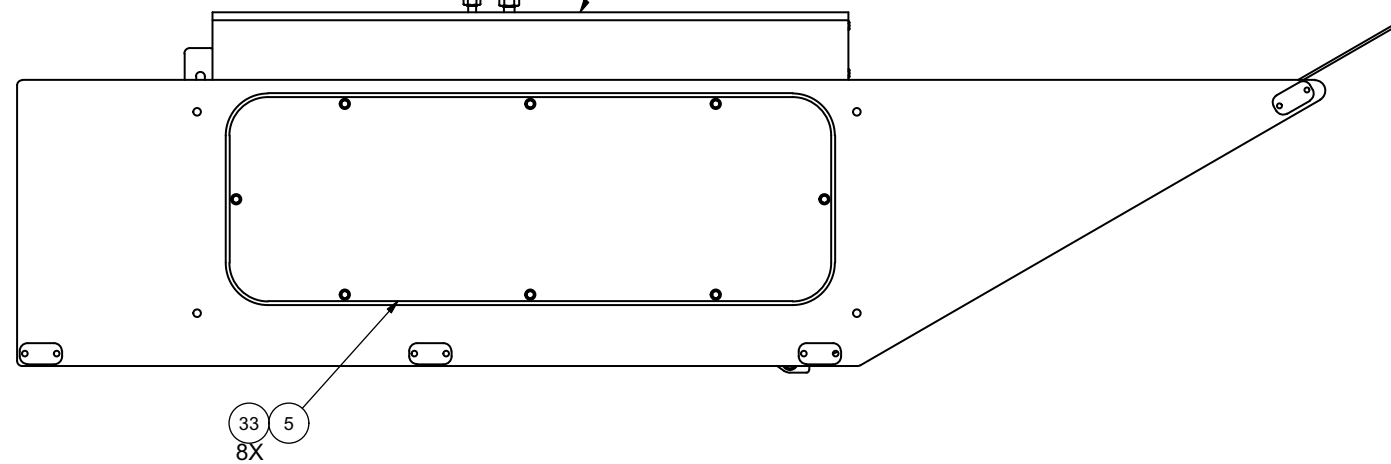

Cooling Package Assembly, LH

Cooling Package Assembly, LH

Item	Part No.	Qty	Description	Item	Part No.	Qty	Description
	599695		Cooling Package Assembly, LH				
1	* 599697	1	. Cooling Package, RAD/CAC	26	234774	1	. Spring, Gas
2	597738	1	. Guard, Fan	27	598612	1	. Bracket, Strut Mount
3	597894	1	. Motor W/ Valve	28	221705W	2	. Hex Nut
	259599	1	.. Speed Sensor, GS70	29	221771W	24	. Washer
4	* 598631	1	. Fan, Sucker	30	293647W	8	. Capscrew
5	598590	1	. Plate, Access Cover	31	302402W	14	. Locknut
6	598606	1	. Plate, Cleanout Cover	32	R13811432	8	. Washer
8	231444	1	. Fitting	33	293628W	16	. Capscrew
11	231443	1	. Fitting	34	293631W	12	. Capscrew
12	272-0352	1	. Fitting	35	R1929619	24	. Washer, Rubber
13	272-0353	1	. Fitting	36	237578	24	. Washer, Fender
14	247427	1	. Fitting	37	296422W	4	. Washer
15	203274	1	. Shutoff Valve	38	248986	2	. Capscrew
16	598608	1	. Tube Assembly	39	251400	2	. Hex Nut
	243051	2	.. Fitting	40	595198-54	1	. Silicone, Rubber
	231811	2	.. Fitting	41	601795	12	. Spacer, Isolator
17	598618	1	. Tube Assembly	42	246037	A/R	. Threadlock
	243052	2	.. Fitting	43	R833112	1	. Fitting
	233934	2	.. Fitting	45	272-0350	1	. Fitting
19	201431	1	. Hose Clamp	46	231296	2	. Clamp
20	231537	1	. Clamp	47	209423	1	. Fitting
21	231250	1	. Clamp	48	606232	16	. Plate, Fan Guard Shim
22	CLP0100112	2	. Clamp, Hydra-Zorb	49	252864	4	. Capscrew
23	231248	2	. Clamp	99	599976	1	. Kit, Hose
24	598517-176	1	. Trim, Hatch Seal	99.1	259356-6	1	.. Hose, Heater
25	R13114	2	. Stud, Ball	99.2	599977	1	.. Hose Assembly
				99.3	049-2401	1	.. Hose Assembly
				99.4	592580	1	.. Hose Assembly

* See Separate Coverage

REF. COOLING PACKAGE INSTL FOR CONTINUATION OF PLUMBING
REFERENCE LH COOLING BOX WELDMENT FOR INFORMATION

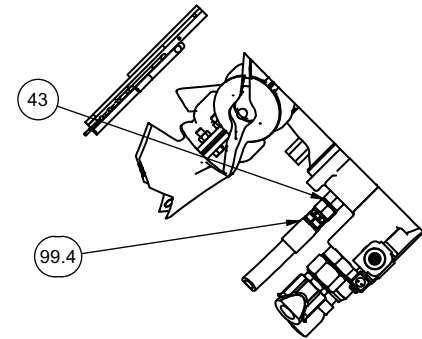


40 INSTALL ITEM 40 BY ADHERING TO ITEM 5 (COVER PLATE) ON CENTER. SEE BELOW DIM FOR LOCATING ITEM 45 FROM BACK EDGE OF COVER PLATE.

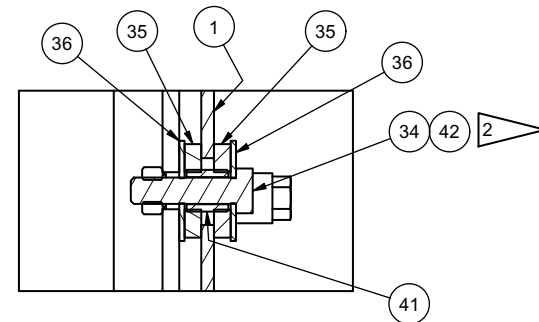
NOTES:

- 1 TORQUE FAN ATTACHMENT HARDWARE TO 60-65 FT-LBS.
- 2 USE BLUE LOCTITE (ITEM 42) WHEN TORQUING HARDWARE FOR INSTALLING COOLING PACKAGE ASSEMBLY (ITEM 1).

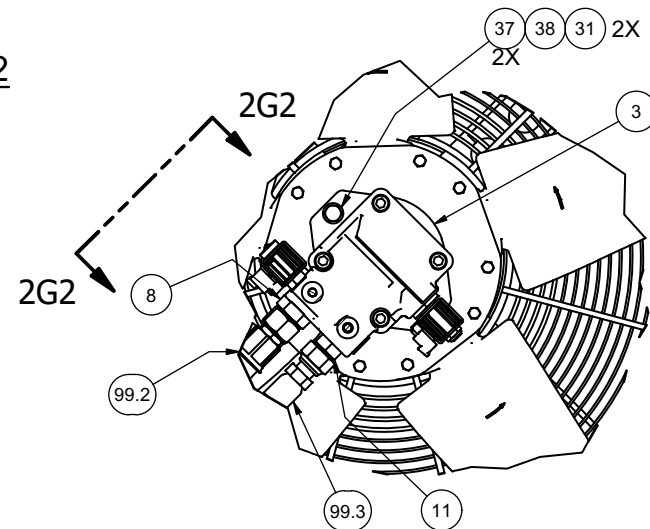
SECTION 1K1-1K1



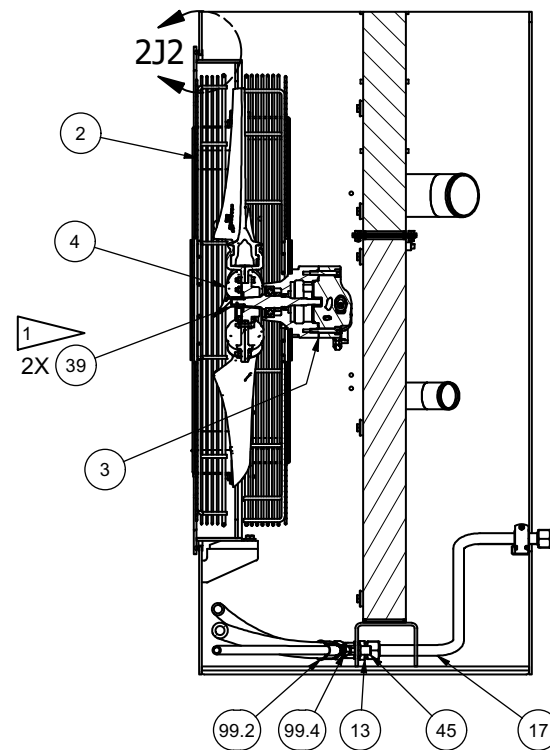
VIEW 2G2-2G2



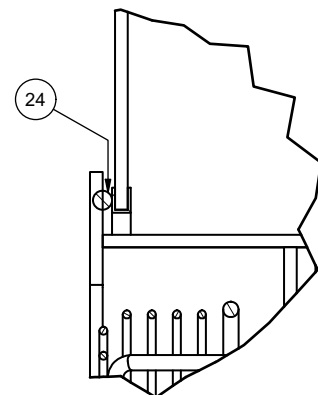
SECTION 2D2-2D2
INSTL TYP FOR ITEMS 34-36
(12 PLACES)



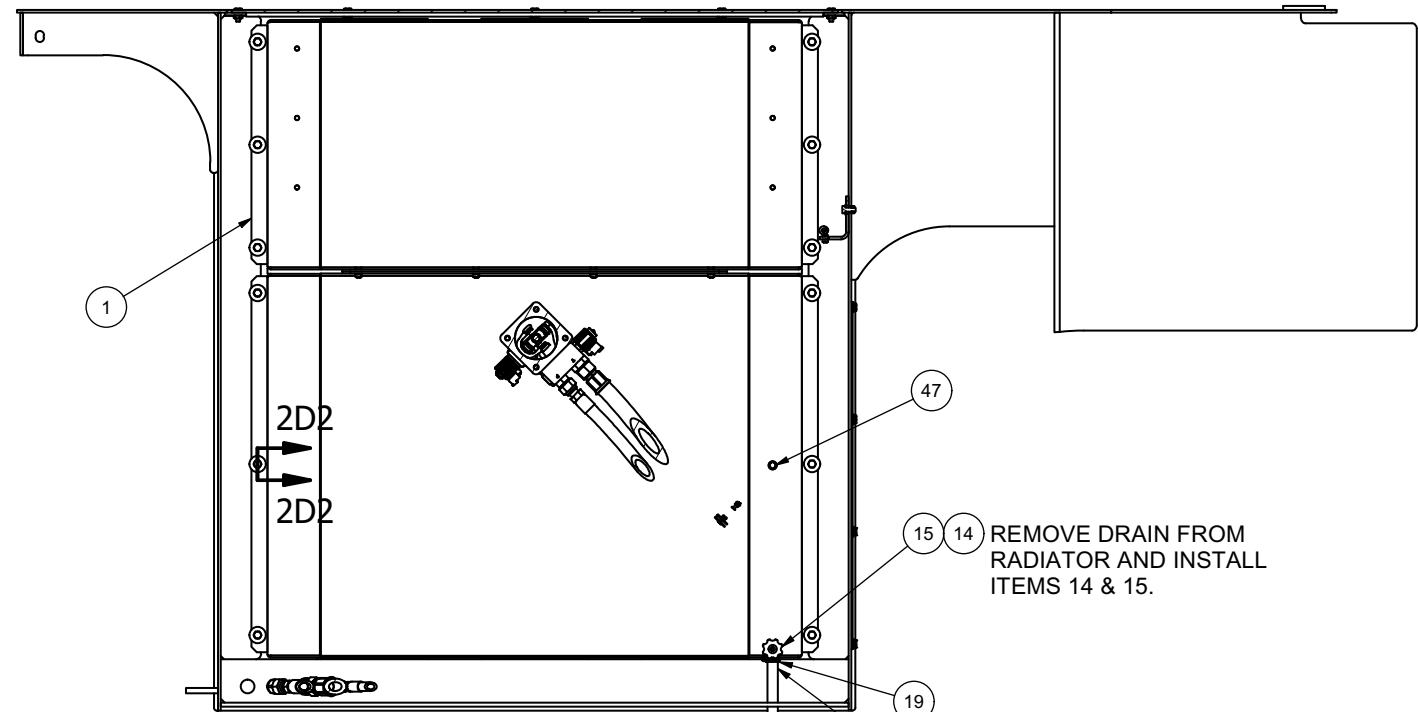
DETAIL 2F2



SECTION 2H1-2H1



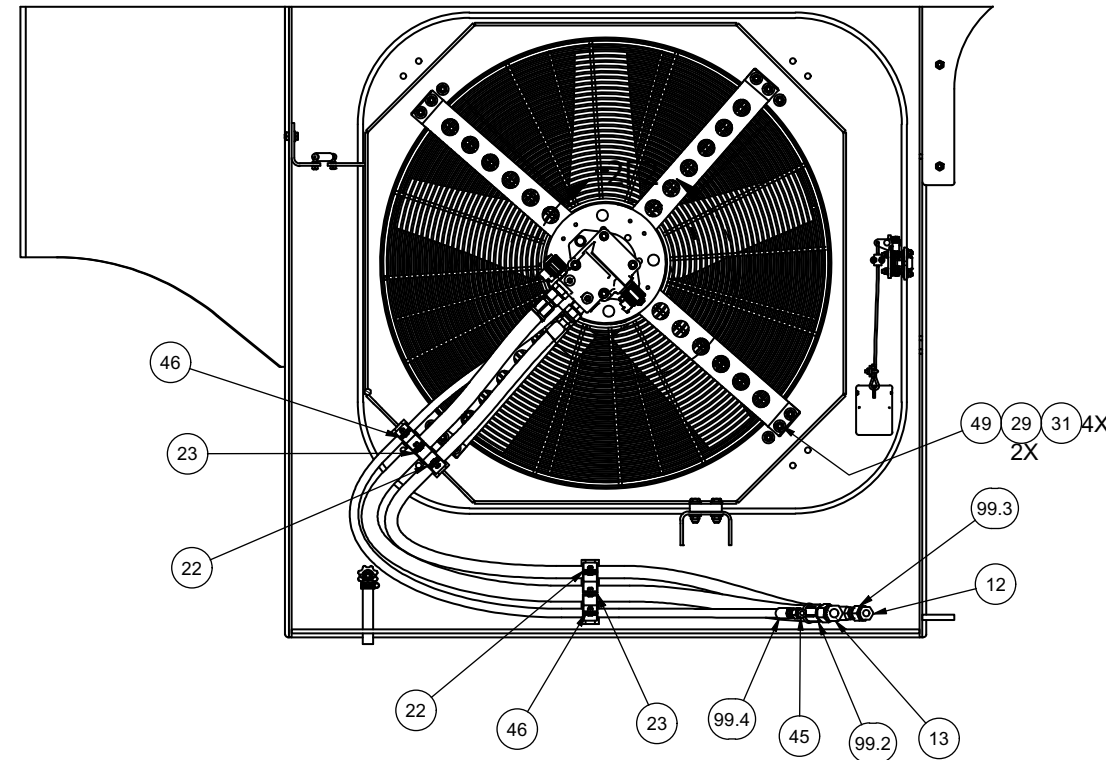
DETAIL 2J2



SECTION 2C1-2C1

REMOVE DRAIN FROM
RADIATOR AND INSTALL
ITEMS 14 & 15.

PASS DRAIN HOSE THROUGH
HOLE IN BOTTOM PLATE OF
COOLING BOX.



SECTION 2E1-2E1