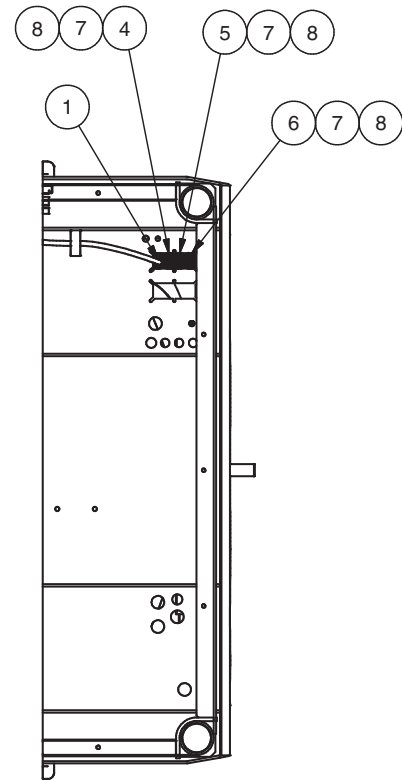


---

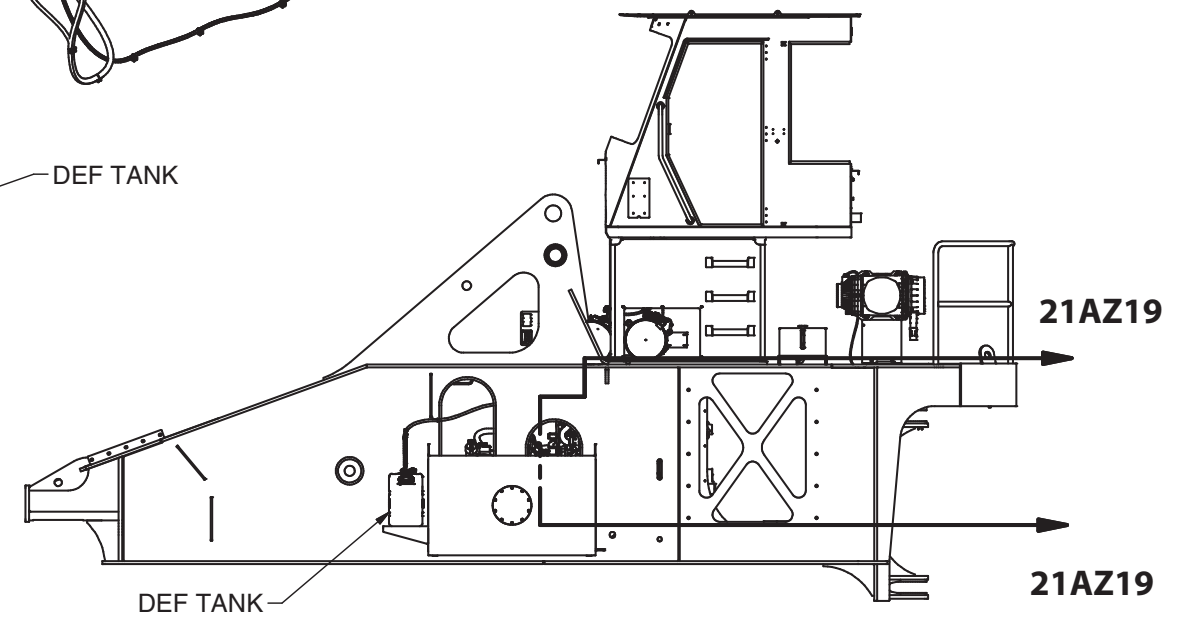
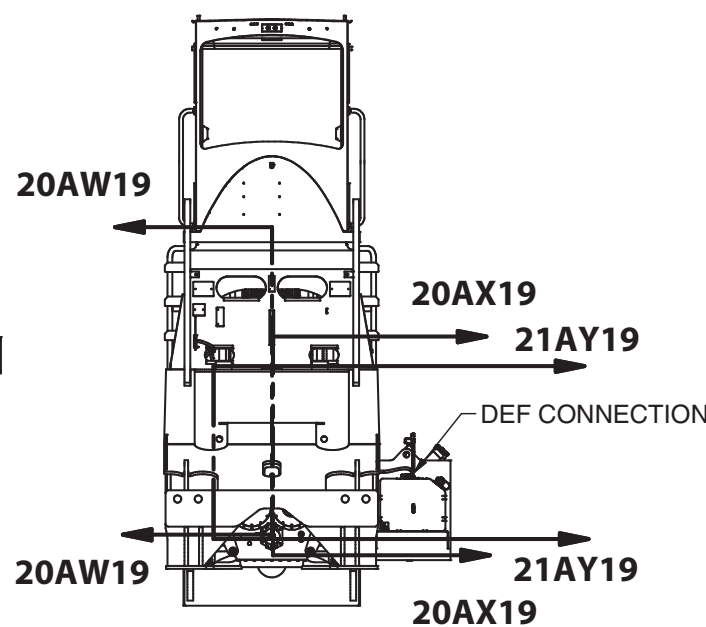
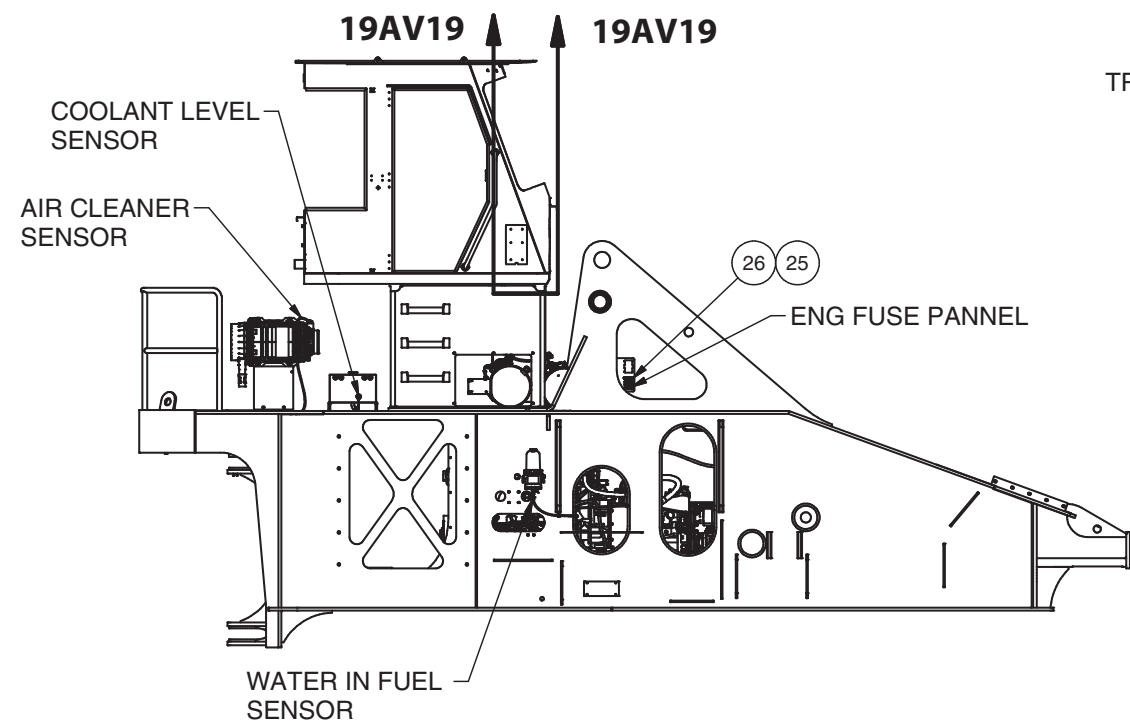
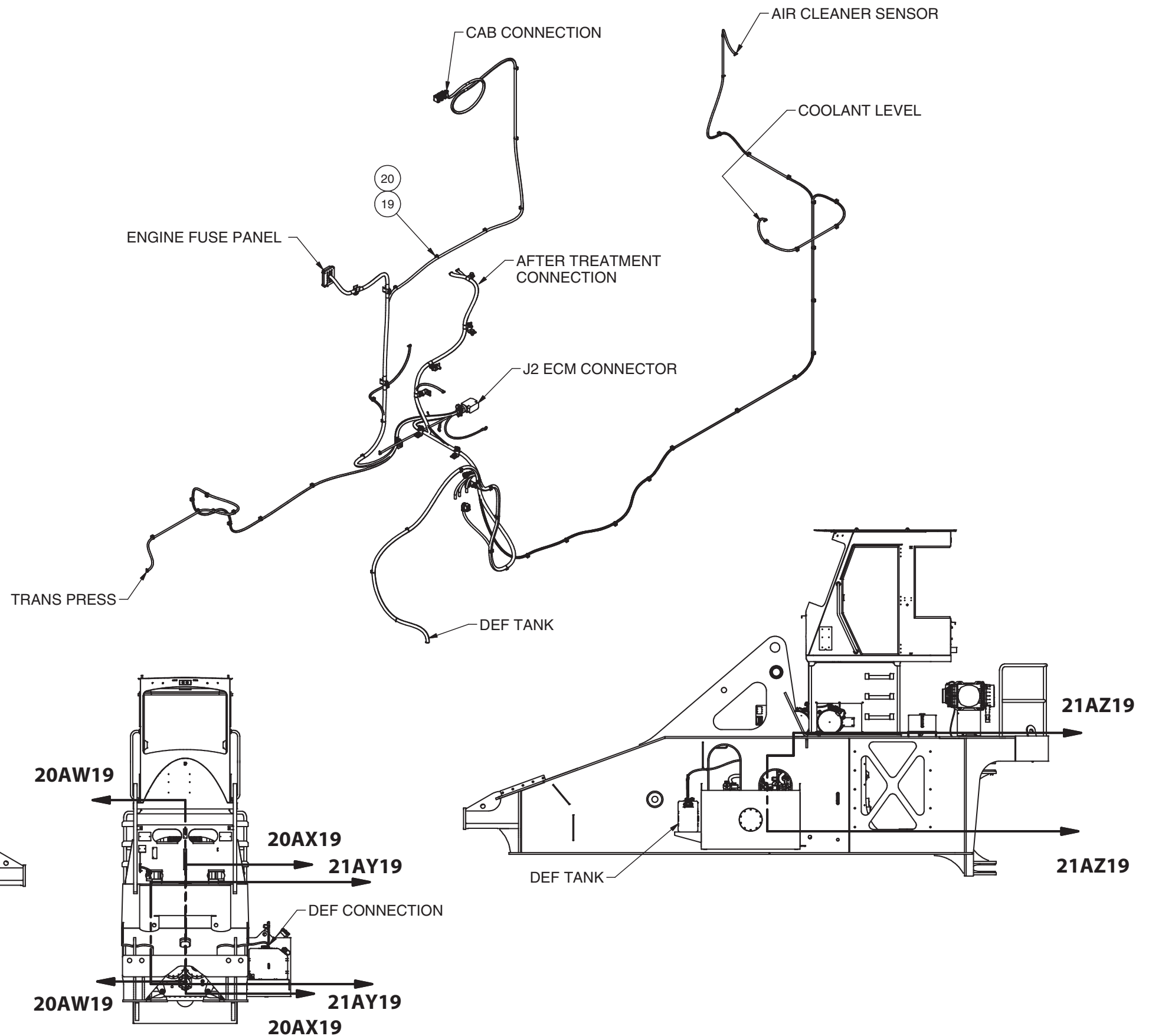
Electrical System - Cummins T4 Engine Harness Installation

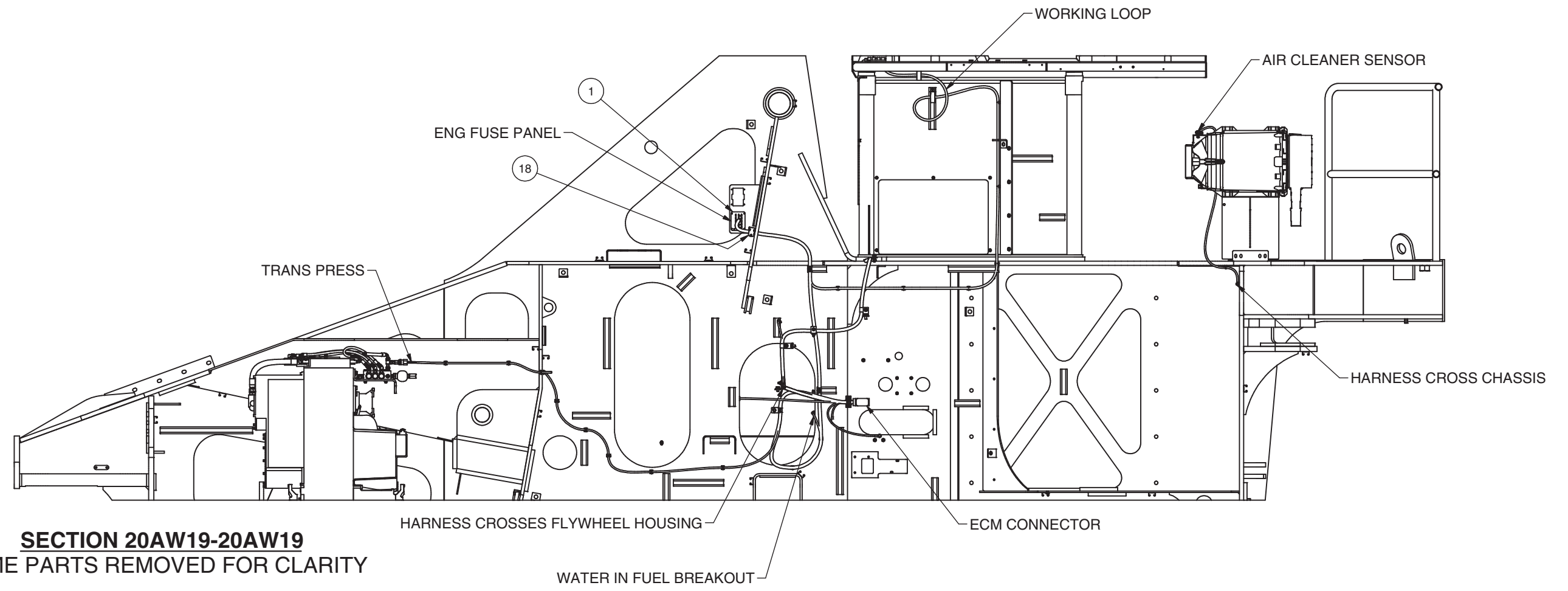
## Electrical System, Cummins T4 Engine Harness Installation

Item	Part No.	Qty	Description	Item	Part No.	Qty	Description
	<b>599692</b>		<b>Cummins T4 Engine Harness Installation</b>				
1	599693	1	. Harness, Cummins T4 Engine	14	293645W	1	. Capscrew
2	599855	1	. Bracket, Assembly	15	234132	2	. Capscrew
3	599797	1	. Boot Connector	16	234271	2	. Washer
4	591419	1	. Plug	17	R13801840	2	. Capscrew
5	591420	1	. Plug	18	231251	3	. Clamp
6	591421	1	. Plug	19	595326	45	. Mount, Tack
7	591422	3	. Plug, Wedgelock	20	249329	63	. Cable Tie
8	219288	36	. Plug	21	R13808095	8	. Clip, Insulated
9	599845	7	. Bracket, Wiring	22	221767W	16	. Washer
10	221771W	4	. Washer	23	293629W	8	. Capscrew
11	293644W	1	. Capscrew	24	302401W	8	. Locknut
12	236805	1	. Capscrew	25	18423W	4	. Washer
13	R13811432	1	. Washer	26	00109451	4	. Screw, Machine

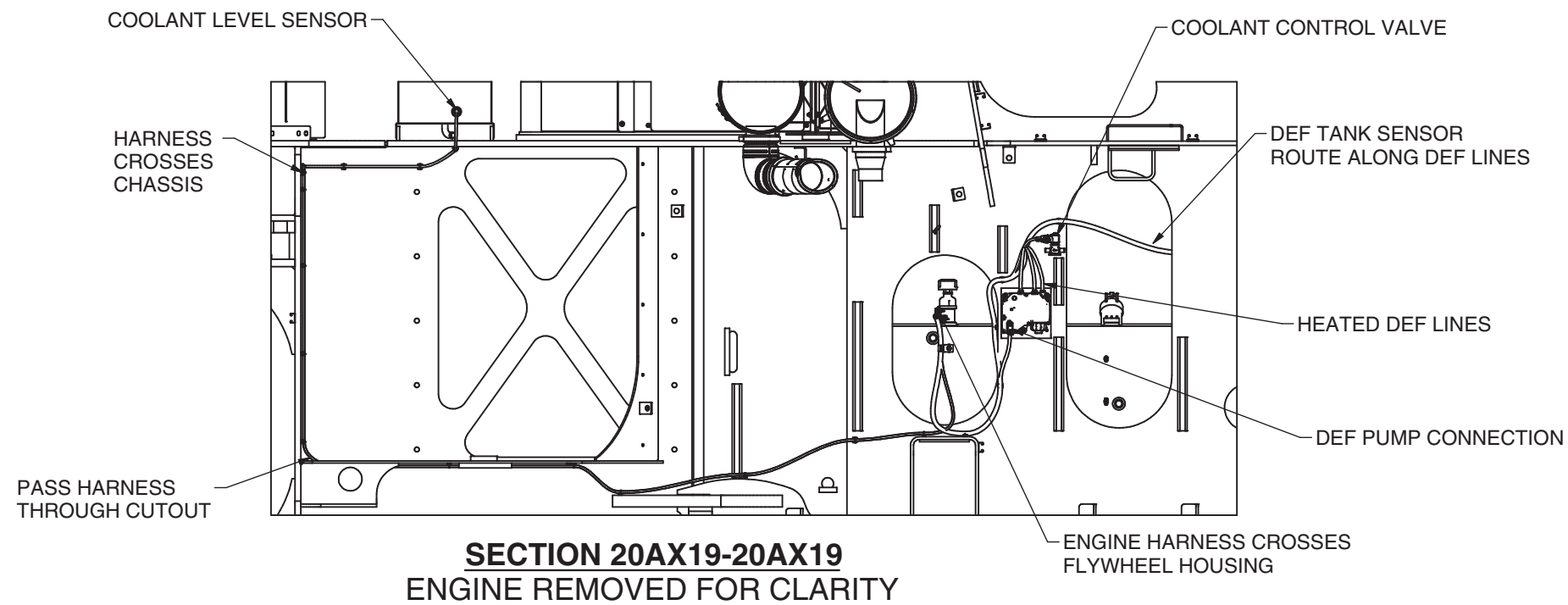


**SECTION 19AV19-19AV19**

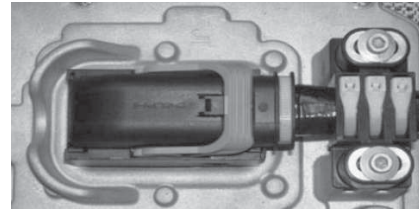




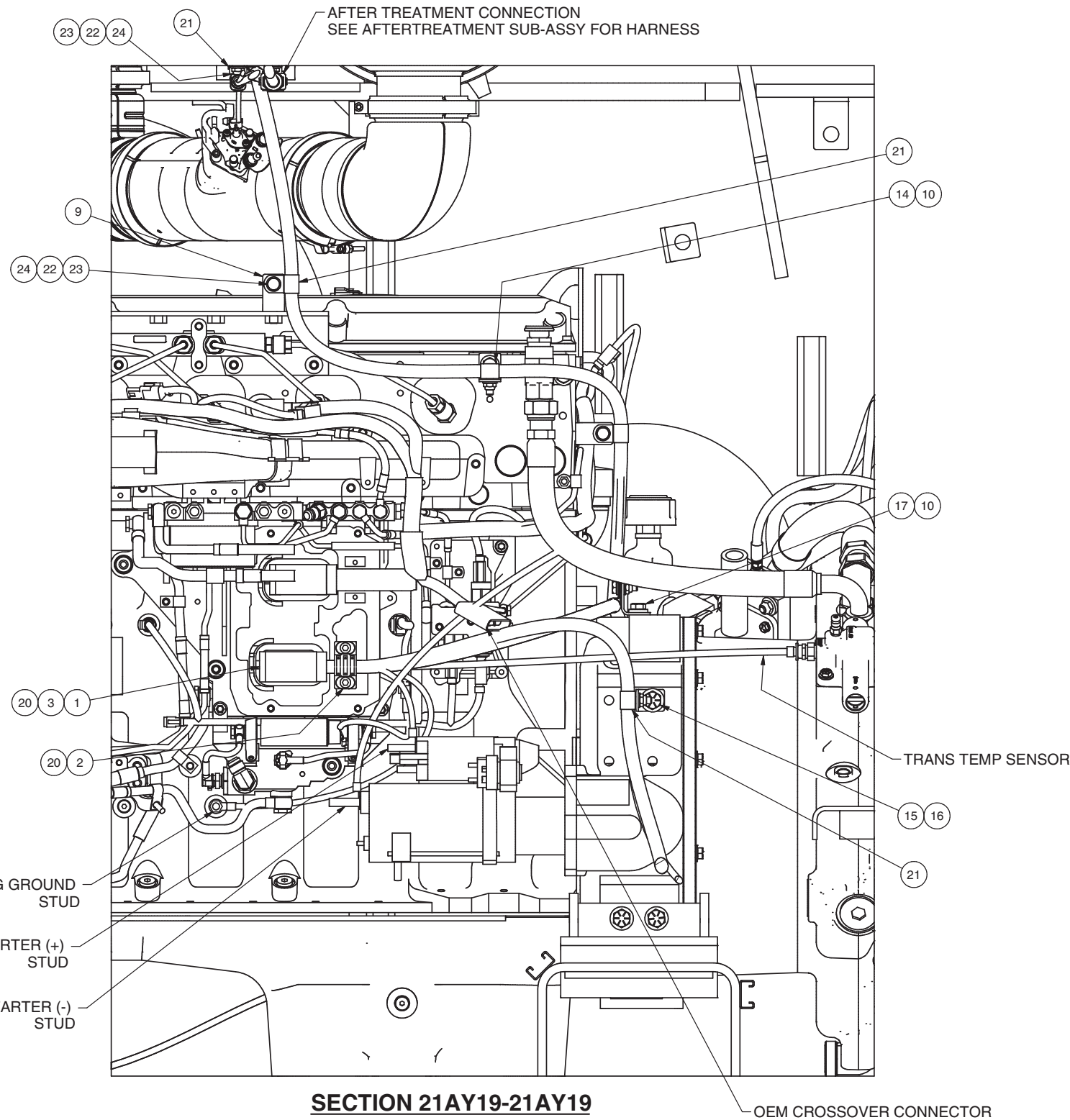
**SECTION 20AW19-20AW19**  
SOME PARTS REMOVED FOR CLARITY



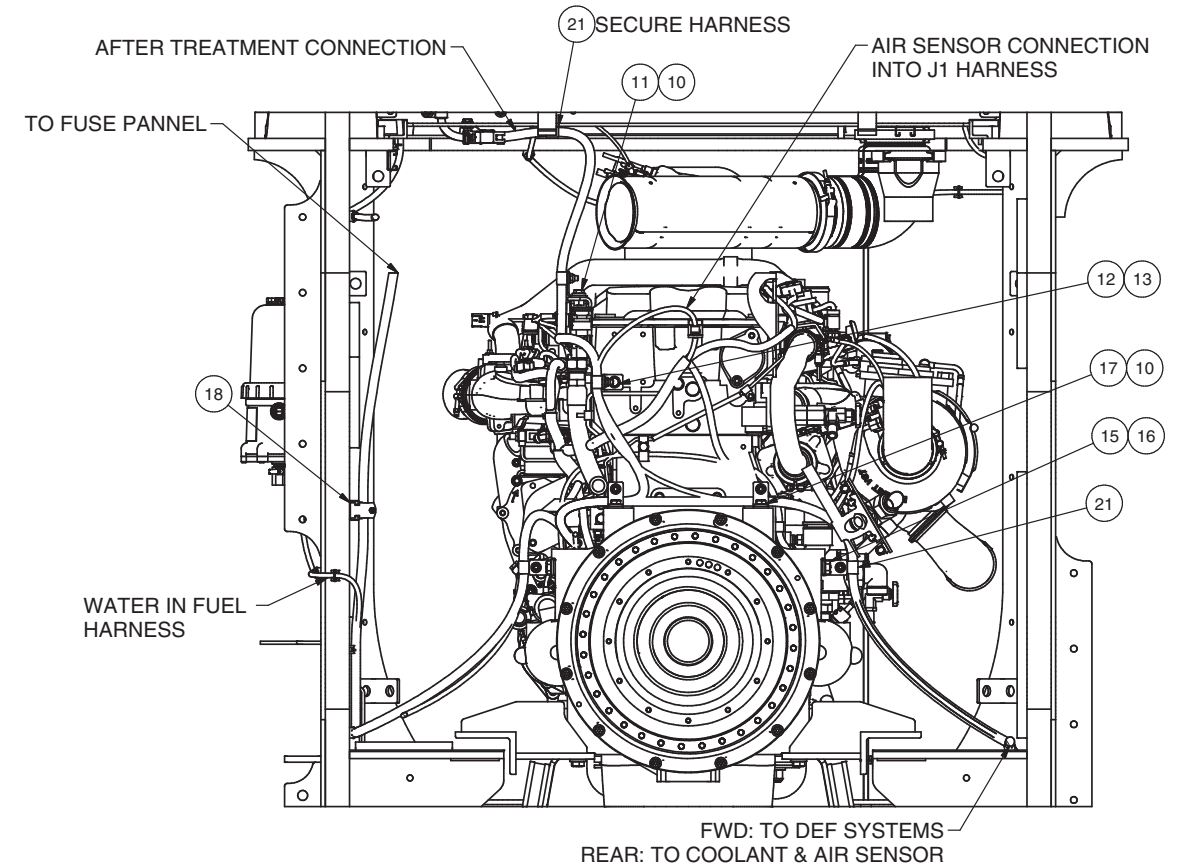
**SECTION 20AX19-20AX19**  
ENGINE REMOVED FOR CLARITY



OEM CONNECTOR INSTALLED WITH CLAMP  
USE 3X CABLE TIES TO SECURE HARNESS  
TORQUE CLAMP SCREWS TO 6 IN-LBS



**SECTION 21AY19-21AY19**



**SECTION 21AZ19-21AZ19**  
SOME PARTS REMOVED FOR CLARITY

