
Tailpost Installation

Tailpost Installation

Item	Part No.	Qty	Description	Item	Part No.	Qty	Description
	598963		Tailpost Installation				
1	599650	1	. Tailpost	17	204540	2	. Bearing Cone
1.1	599653	1	. . Seal, Race	18	204603	2	. Bearing Cone
2	223433	2	. Locknut	19	591803	1	. Cap, Dust
3	293712W	4	. Capscrew	20	208870	2	. Seal
4	221777W	4	. Washer	21	212198	1	. Bearing Cup
5	207501	4	. Locknut	22	212199	1	. Bearing Cone
6	Y18C-1680	2	. Capscrew	23	574677	1	. Axle, Tailfork
7	221780W	4	. Washer	24	510444	2	. Gasket
8	207504	2	. Locknut	25	501241	2	. Cap, Dust
9	214471	1	. Bearing Cup	26	599543	1	. Steering Arm
10	234204	1	. Bearing Cone	27	508834	2	. Seal, Race
11	214464	1	. Seal	28	508842	2	. Seal Retainer Assembly
12	207507	4	. Lockwasher	29	591738	1	. Indicator, Tail Wheel
13	207510	1	. Lockwasher	30	YKXA 220-1.00	1	. Pipe
14	Y17C-0616	16	. Capscrew	31	292659W	1	. Nut
15	00191758	2	. Fitting, Lube	33	222691	A/R	. Compound, Retaining
16	203564	2	. O-Ring	34	228988	A/R	. Compound, Retaining

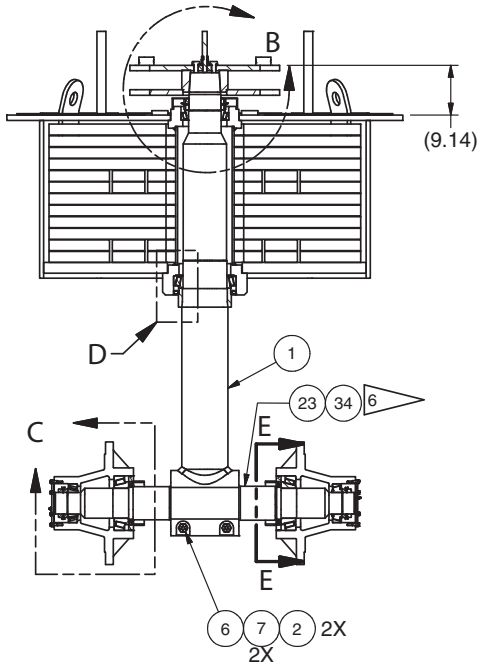
INSTRUCTIONS - TAILPOST INSTALLATION

- 1) SEAT THE BEARING CUPS INTO THE TAILPOST HOUSING. CHECK WITH FEELER GAUGE TO INSURE PROPER SEATING OF THE BEARING CUPS.
- 2) CHECK FITTING OF BOTH BEARINGS TO THEIR RESPECTIVE POSITIONS ON THE TAILPOST. THEN PACK BEARINGS WITH GREASE.
- 3) SLIDE THE LOWER GREASE SEAL ON THE TAILPOST WITH THE LIP TOWARDS THE BEARING. THE SEAL IS TO BE INSTALLED ON THE BEARING SPACER.
- 4) INSTALL THE LOWER BEARING ON THE TAILPOST TO THE BEARING SPACER. PACK GREASE IN A CONE SHAPE ABOVE THE BEARING. TO PREVENT RUST, LIGHTLY COVER THE PART OF THE TAILPOST THAT WILL BE INSIDE THE HOUSING WITH GREASE.
- 5) INSTALL A LIFTING DEVICE AND LIFT THE TAILPOST INTO THE CHASSIS TAILPOST HOUSING TO SEAT THE LOWER BEARING TO THE LOWER BEARING CUP IN THE TAILPOST HOUSING.
- 6) BLOCK UP BELOW THE TAILPOST AND REMOVE THE LIFTING DEVICE.
- 7) INSTALL THE TOP BEARING INTO THE TOP CUP.
- 8) INSTALL THE FIRST LOCK NUT WITH THE BEVEL SIDE UP, SEE NOTE 3.
- 9) INSTALL THE LOCK WASHER.
- 10) INSTALL THE SECOND LOCK NUT WITH THE BEVEL SIDE DOWN, SEE NOTE 3.
- 11) BEND THE LOCK WASHER TABS TO SECURE THE LOCK NUTS.
- 12) PACK THE TOP AREA OF THE BEARING WITH GREASE AND INSTALL THE DUST CAP COVER.
- 13) CLEAN ANY DEBRIS AND GREASE/OIL FROM THE TAPER AT THE TOP OF THE TAILPOST, AND APPLY LOCTITE 635 (ITEM 33) TO THE FULL SURFACE OF THE TAPER, SEE NOTE 6.
- 14) INSTALL STEERING ARM, ALIGNING BOLT HOLES IN YOKE WITH TAPPED HOLES IN THE TOP OF THE TAILPOST.
- 15) INSTALL YOKE HARDWARE AND TIGHTEN TO SPEC USING CROSS PATTERN.

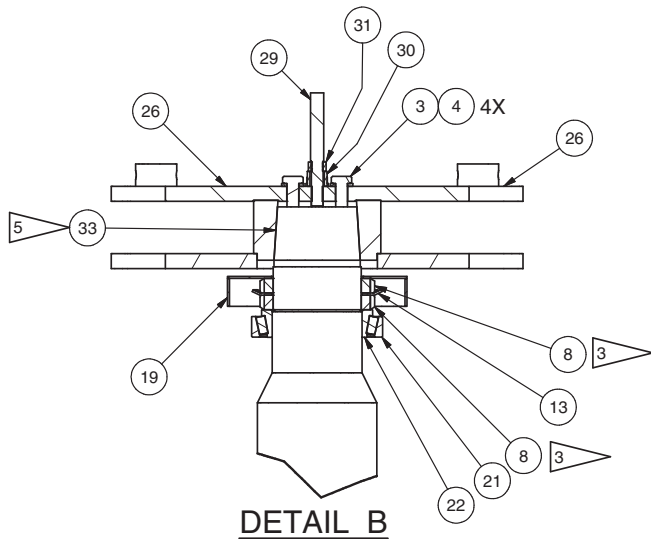
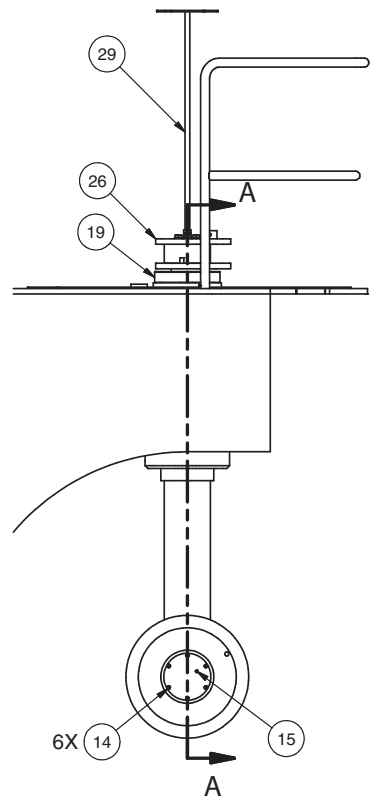
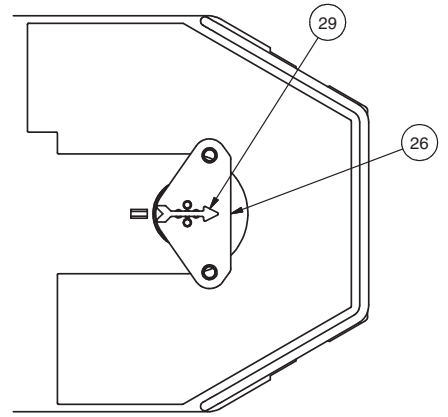
NOTES

- 2) SEE PROCEDURE 80-1237 FOR TAILPOST INSTALLATION.
- 3) TIGHTEN TO 2400 FT-LBS (3250 N-m).
- 4) TIGHTEN TO SNUG
- 5) CLEAN AND APPLY LOCTITE 635 (ITEM 33) TO THIS SURFACE BEFORE STEERING ARM INSTALLATION.
- 6) APPLY LOCTITE ITEM 34 TO AXLE SHAFT TAIL POST PRIOR TO INSTALLATION INTO TAILPOST.

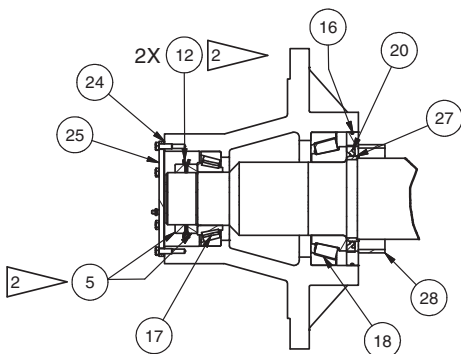
Tailpost Installation



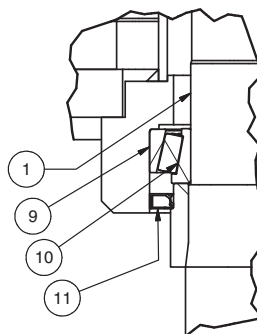
SECTION A-A



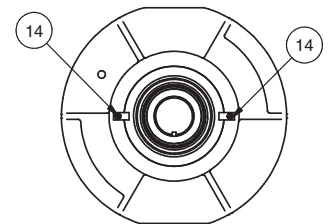
DETAIL B



**DETAIL C
2 PLACES**



DETAIL D



**SECTION E-E
2 PLACES**