

---

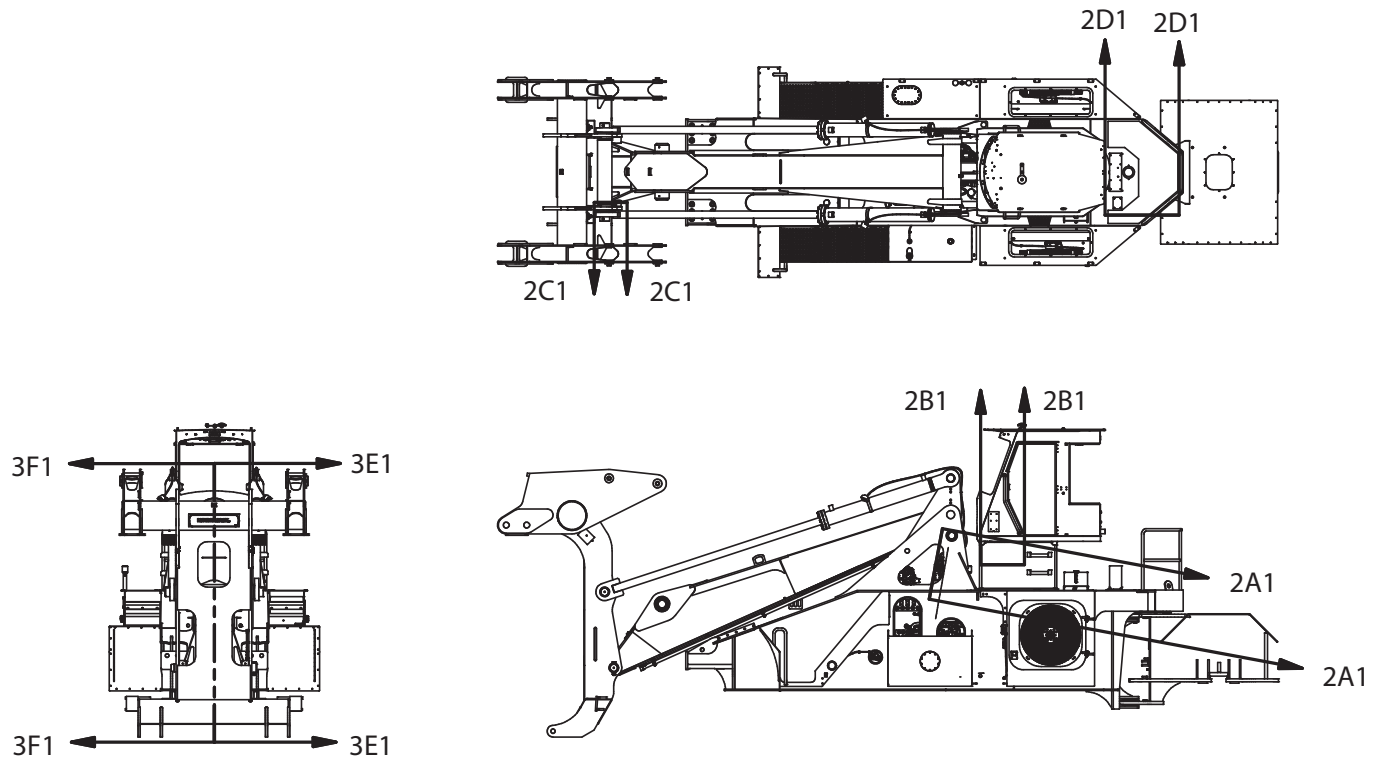
Electrical System - Cummins, L90

## Electrical System - Cummins, L90

Item	Part No.	Qty	Description	Item	Part No.	Qty	Description
<b>598958 Electrical System - Cummins</b>							
1.1	254837	2	. Module, Expansion	1.11.16	221763W	1	.. Washer
1.2	79603	1	. Module, Expansion	1.11.17	R13810993	1	.. Capscrew
1.3	598867	1	. Wire Harness, "A"	1.11.20	598910	1	.. Battery Harness
1.4	598868	1	. Wire Harness, "B"	1.11.20.01	593607	1	... Fuse, Midi/AMI, 125A
	237172	1	.. Resistor, 1K Ohm	1.11.20.02	593606	1	... Holder, Inline Fuse
	2509736	1	.. Fuse, 5Amp	1.11.20.03	NSS	-	... Battery Cable "A"
	594743	1	.. Capacitor, 3 Pin	1.11.20.04	NSS	-	... Battery Cable "B"
1.5	598869	1	. Wire Harness, Stair Lights	1.11.20.05	NSS	-	... Battery Cable "C"
	594742	3	.. Capacitor, 2 Pin	1.11.20.06	NSS	-	... Battery Cable "D"
1.6	598870	1	. Wire Harness, RH XA2	1.11.20.07	NSS	-	... Battery Cable "E"
	241893	1	.. Resistor, 18K Ohm	1.11.20.08	NSS	-	... Battery Cable "F"
	597769	1	.. Resistor, 125 Ohm, 5 Watt	1.11.20.09	NSS	-	... Battery Cable "G"
1.7	598871	1	. Wire Harness, XC23	1.11.20.10	NSS	-	... Battery Cable "H"
	237172	3	.. Resistor, 1K Ohm	1.11.20.11	NSS	-	... Battery Cable "J"
1.8	598872	1	. Wire Harness, LH XA2	1.11.20.12	NSS	-	... Battery Cable "L"
	241893	1	.. Resistor, 18K Ohm	1.11.20.13	NSS	-	... Battery Cable "K"
	600615	1	.. Relay, Mini ISO	1.13	598644	3	. Linear Position Sensor
1.9	* 598877	1	. Chassis Fuse Panel		598911	1	.. Kit, Spherical Rod Ends
1.10	* 599692	1	. Engine Harness Installation	1.14	906182	2	. Switch, Rocker
1.11	598890	1	. Wire Harness Battery Installation	1.15	237578	1	. Washer
1.11.1	596169	1	.. Switch	1.16	296417W	7	. Washer
1.11.2	200220	2	.. Battery	1.17	292501W	2	. Capscrew
1.11.3	238429	10	.. Clamp	1.18	302399W	1	. Locknut
1.11.4	221767W	4	.. Washer	1.19	296420W	9	. Washer
1.11.5	221499W	2	.. Capscrew	1.20	293628W	3	. Capscrew
1.11.6	R13811191	2	.. Locknut	1.21	302401W	3	. Locknut
1.11.7	595326	20	.. Mount, Tack	1.22	293631W	3	. Capscrew
1.11.8	249329	20	.. Cable Tie	1.23	595326	A/R	. Mount, Tack
1.11.9	221703W	1	.. Hex Nut	1.24	249329	A/R	. Cable Tie
1.11.10	231252	6	.. Clamp, Hydra-Zorb	1.25	R13811617	4	. Capscrew
1.11.11	R13808094	1	.. Clip, Insulated	1.26	WCT0000187	2	. Washer
1.11.12	R13802914	4	.. Washer	1.27	65290	2	. Machine Screw
1.11.13	R13811190	2	.. Locknut	1.28	18423W	4	. Washer
1.11.14	R13811015	2	.. Capscrew	1.29	00109451	4	. Machine Screw
1.11.15	* 585189	1	.. Battery Lockout Installation	1.30	73969	2	. Cable Tie
				1.31	593903	1	. Nut, Channel

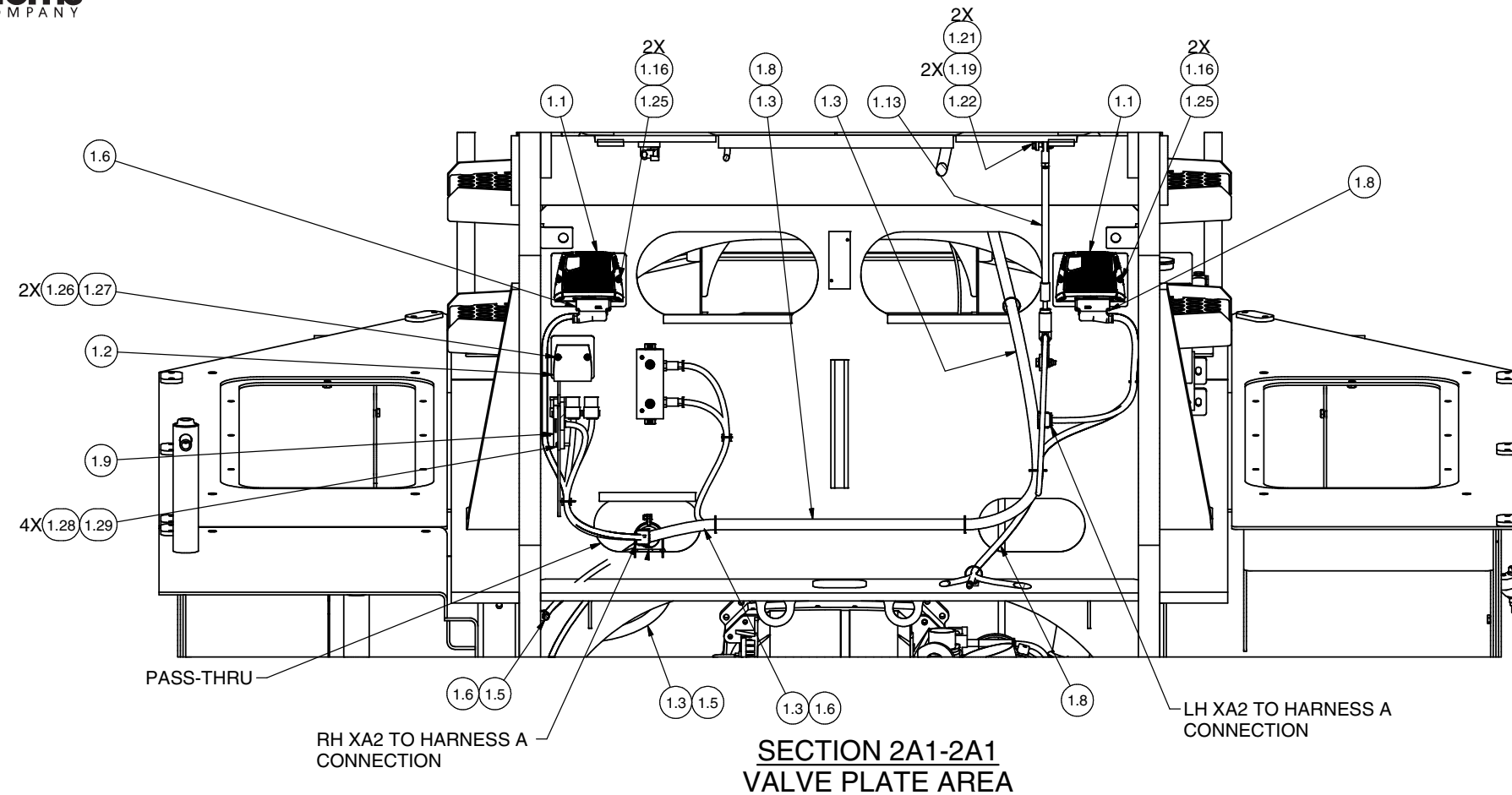
\* See Separate Coverage  
NSS Not Sold Separately

## Electrical System - Cummins

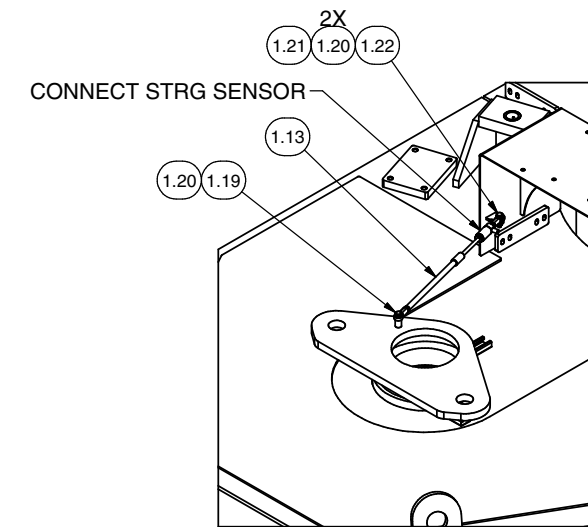


### NOTES:

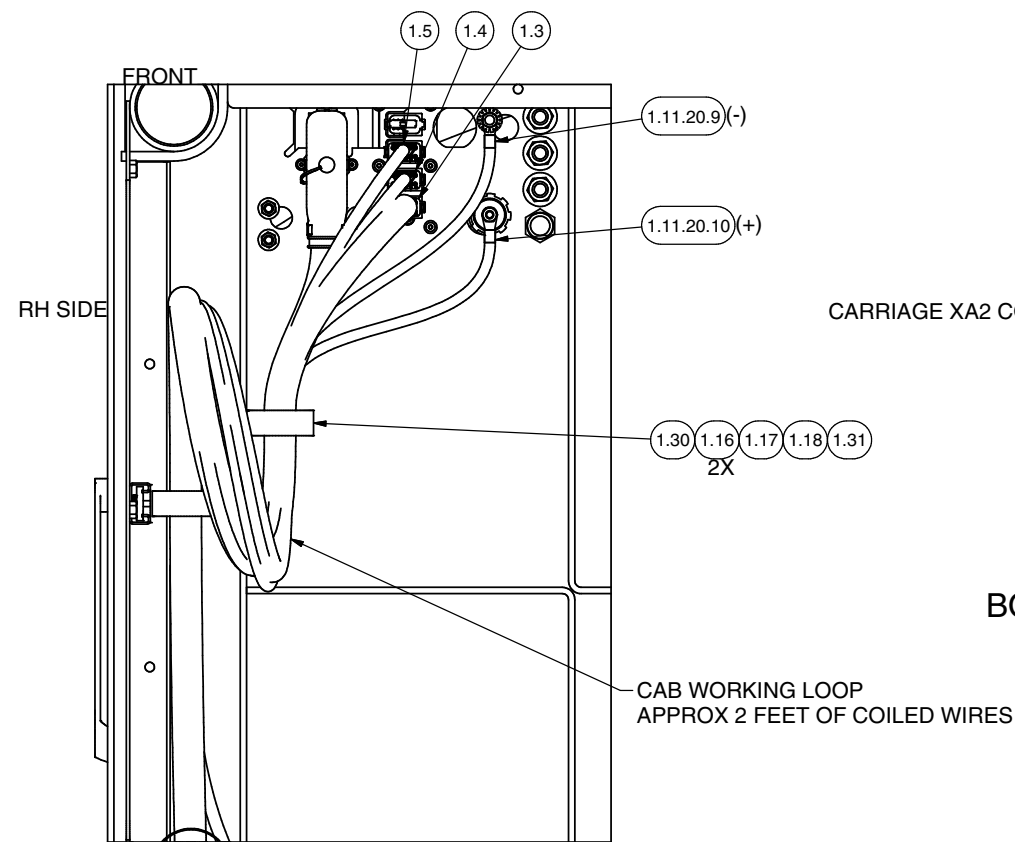
2. ROUTE WIRE HARNESS AS SHOWN. DEVIATION FROM THIS ROUTING WILL AFFECT HARNESS LENGTHS.
- WIRE HARNESS SHALL BE SUPPORTED EVERY 18 INCHES AS REQUIRED WITH TACK MOUNTS AND CABLE TIES.
  - WHEN SECURING WIRES HARNESS TO TACK MOUNT, RUN CABLE TIE THROUGH BOTH TACK MOUNT LOOPS AND STRADDLE HARNESS IN TACK MOUNT.
  - WHEN NOT SECURING HARNESS TO TACK MOUNT, USE THE FIRST LOOP TO SECURE CABLE TIE TO SUPPORT OBJECT, THEN USE THE SECOND LOOP TO SECURE THE WIRE HARNESS.



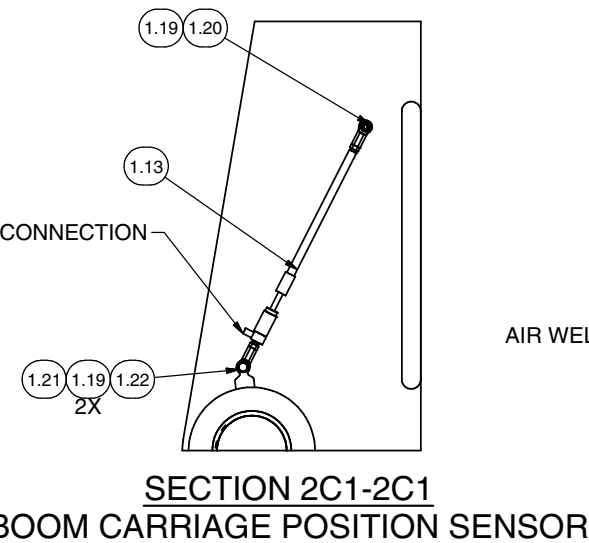
**SECTION 2A1-2A1  
VALVE PLATE AREA**



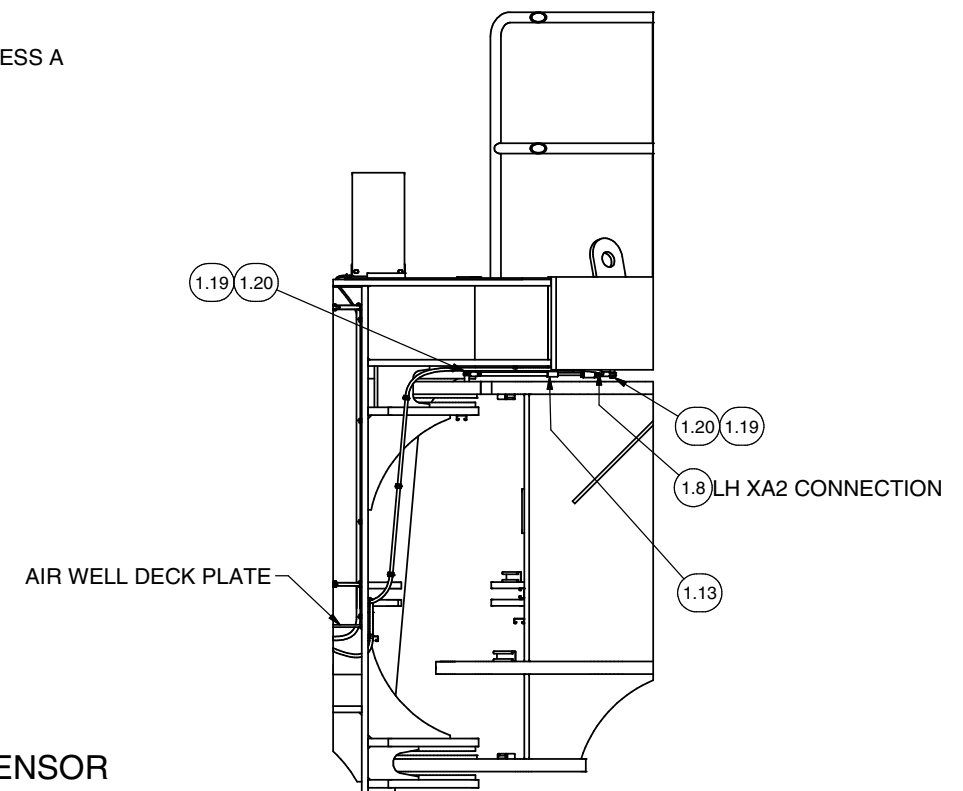
**2WD STRG POSITION SENSOR**  
SOME PARTS REMOVED FOR CLARITY  
COIL AND STOW EXTRA CABLE  
UNDER AIR WELL DECK



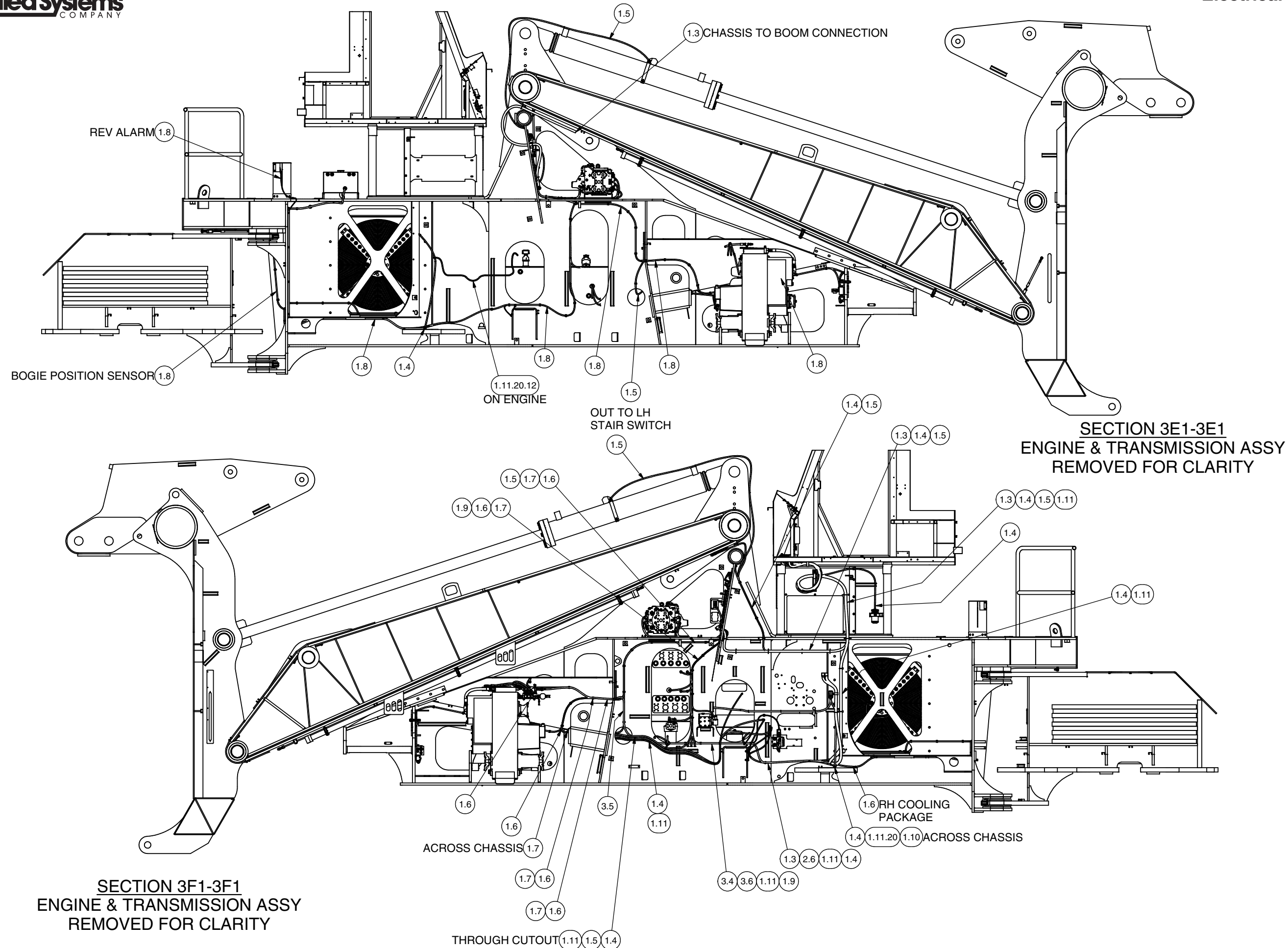
**SECTION 2B1-2B1  
CAB CONNECTIONS  
LOOKING AT BOTTOM OF CAB**



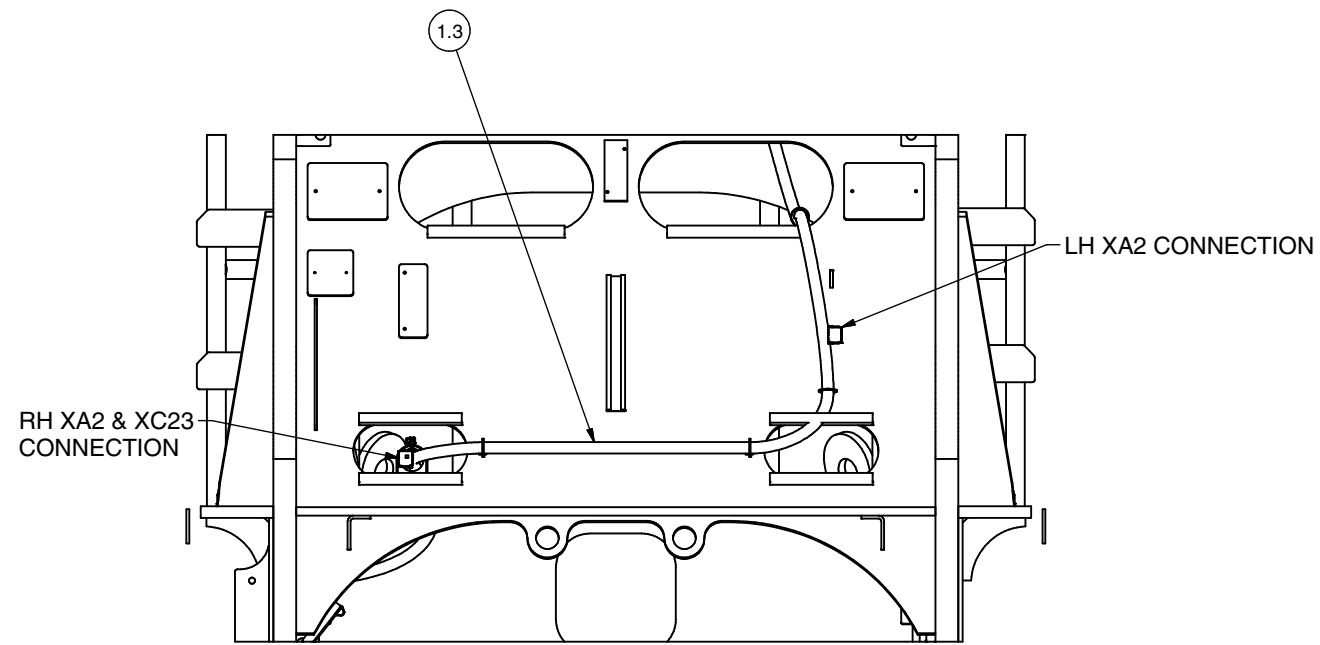
**SECTION 2C1-2C1  
BOOM CARRIAGE POSITION SENSOR**



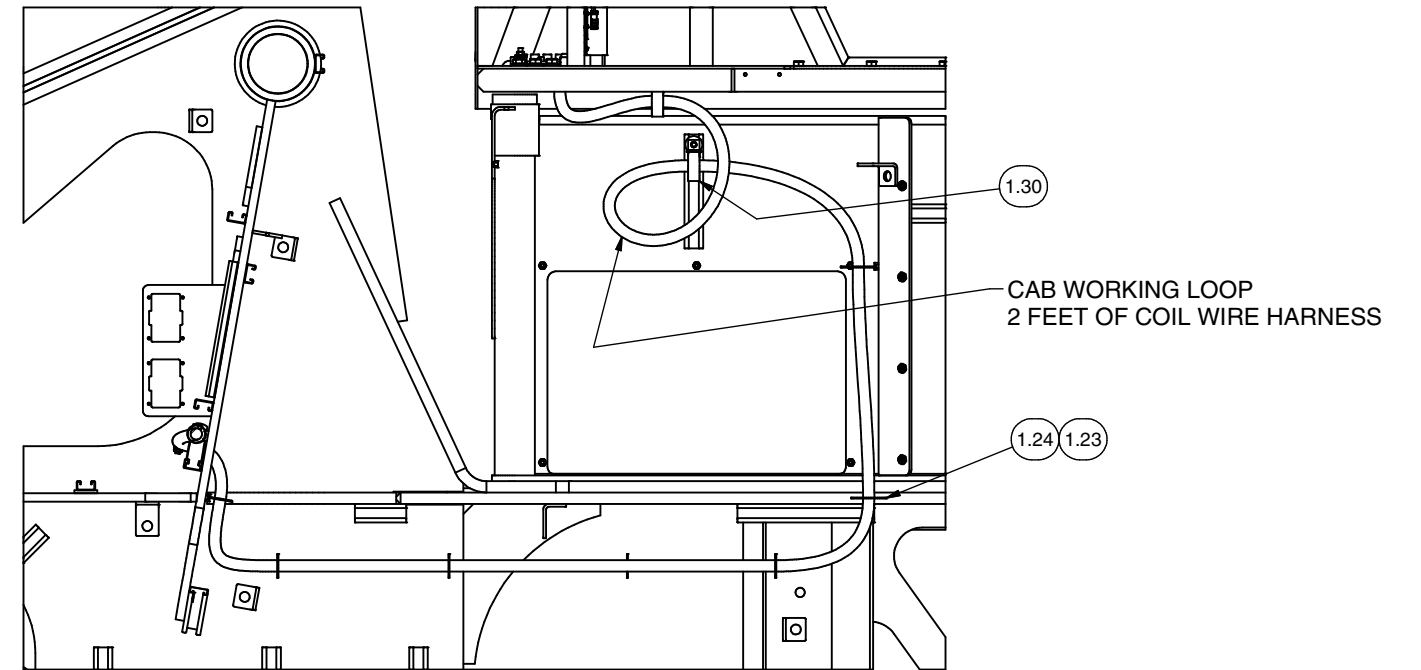
**SECTION 2D1-2D1  
CHASSIS BOGIE POSITION SENSOR  
FOR 4WD UNIT**



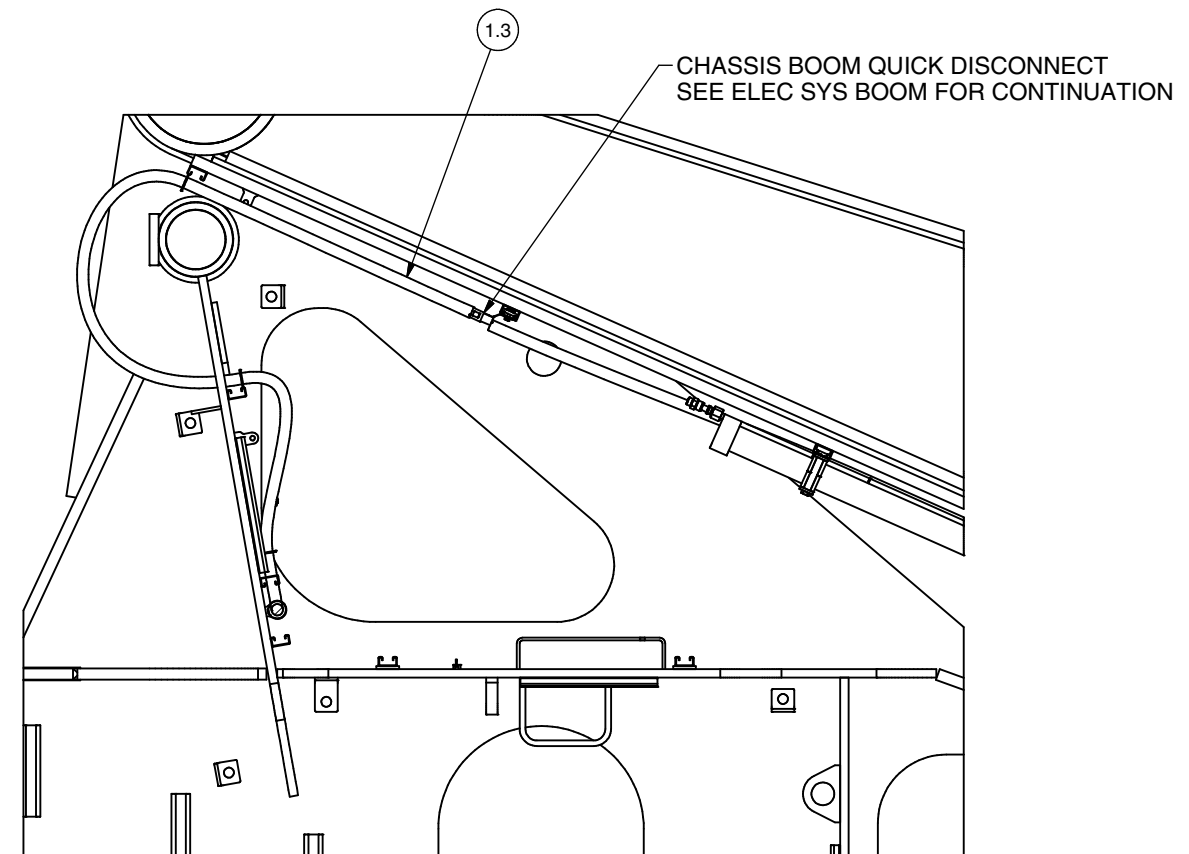
WIRE HARNESS, "A"; CAN BUSS - CHASSIS



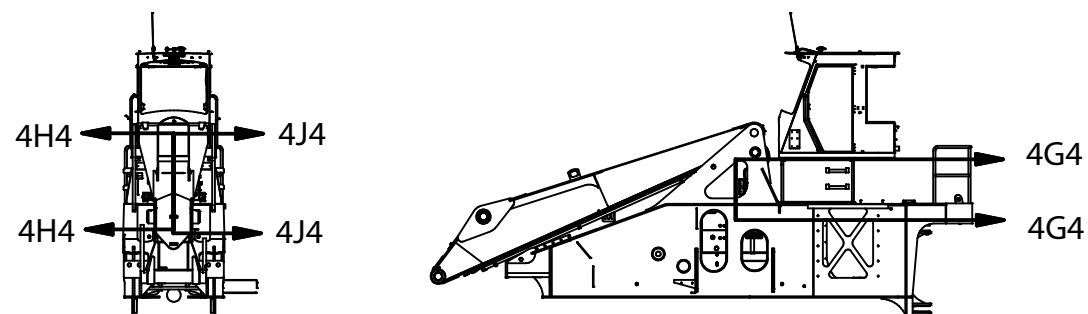
SECTION 4G4-4G4



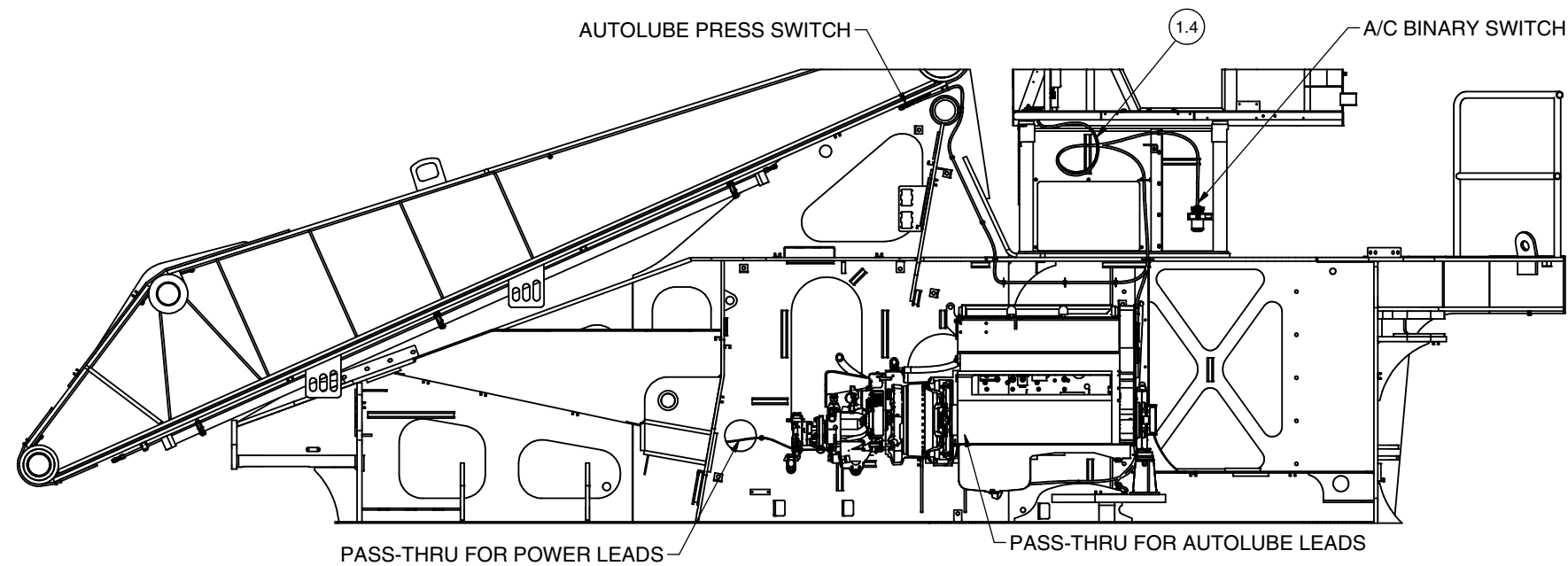
SECTION 4H4-4H4



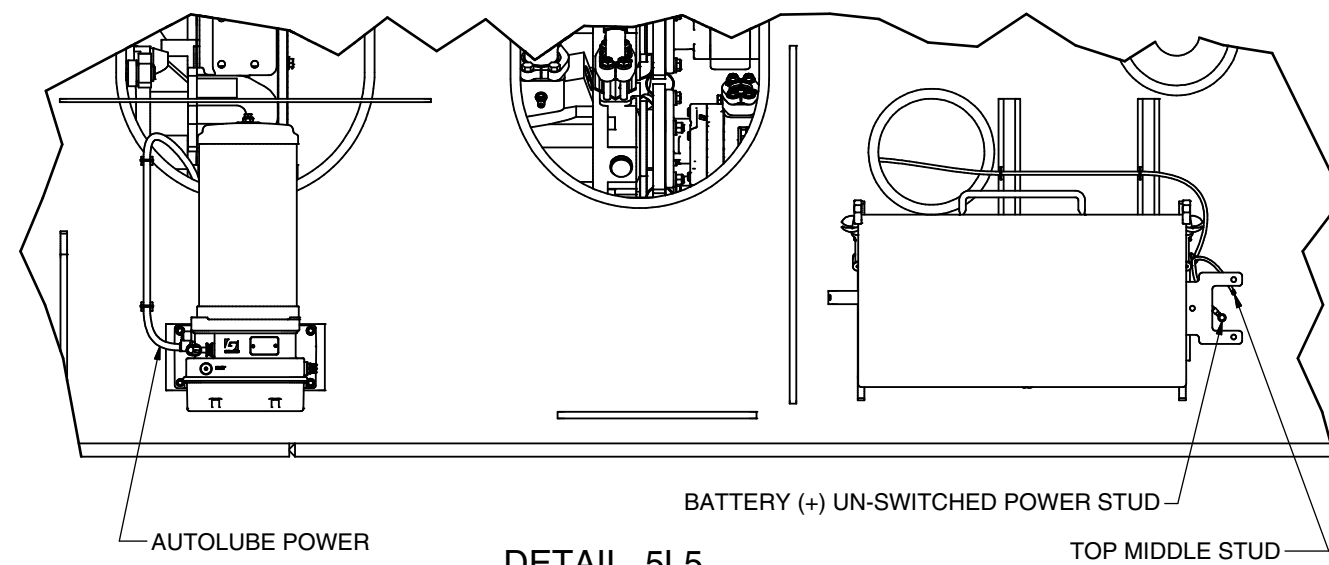
SECTION 4J4-4J4



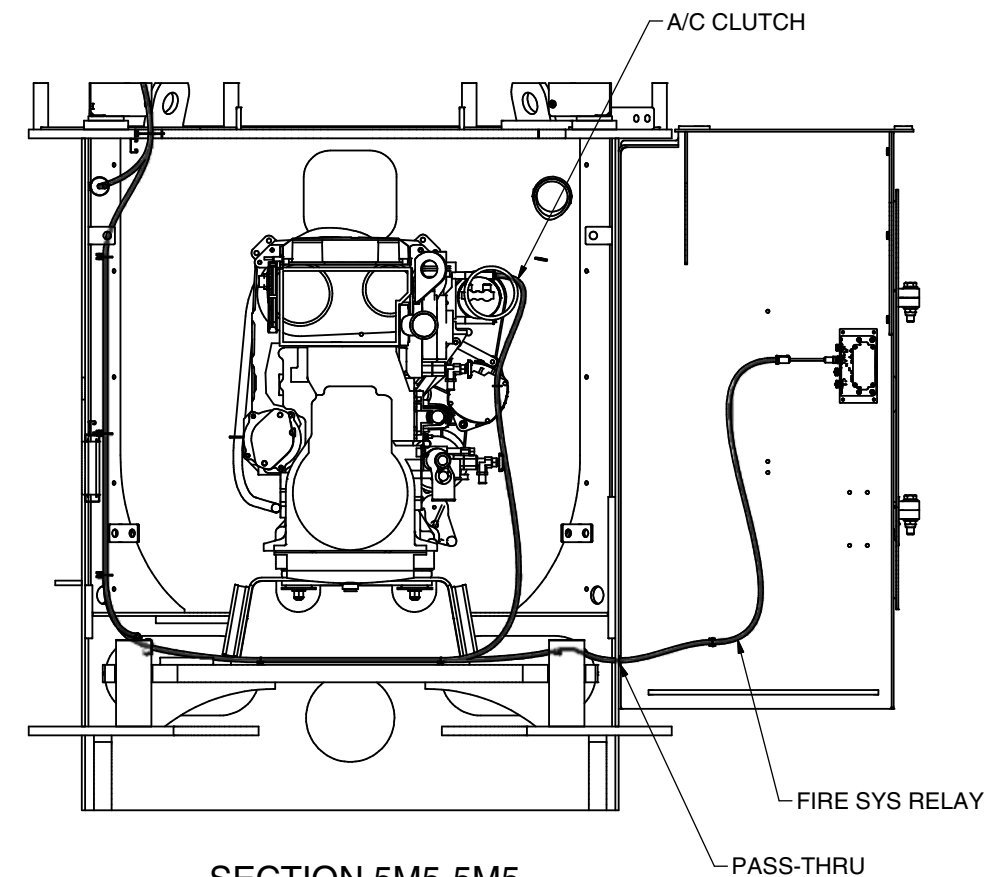
WIRE HARNESS, "B"; A/C & AUTOLUBE



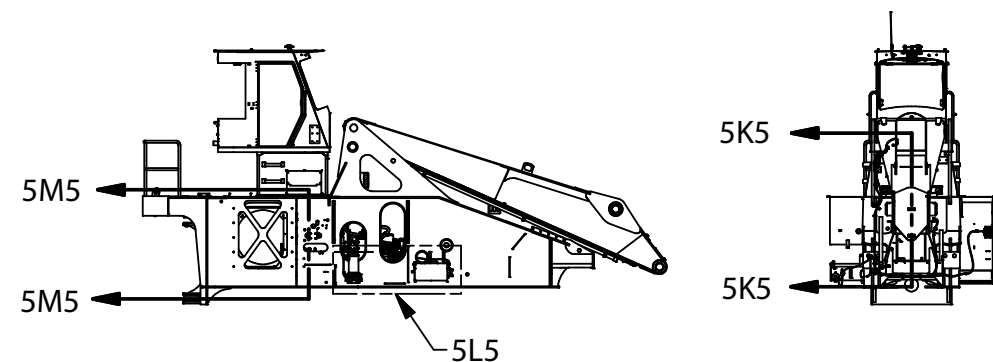
SECTION 5K5-5K5  
SOME PARTS REMOVED FOR CLARITY

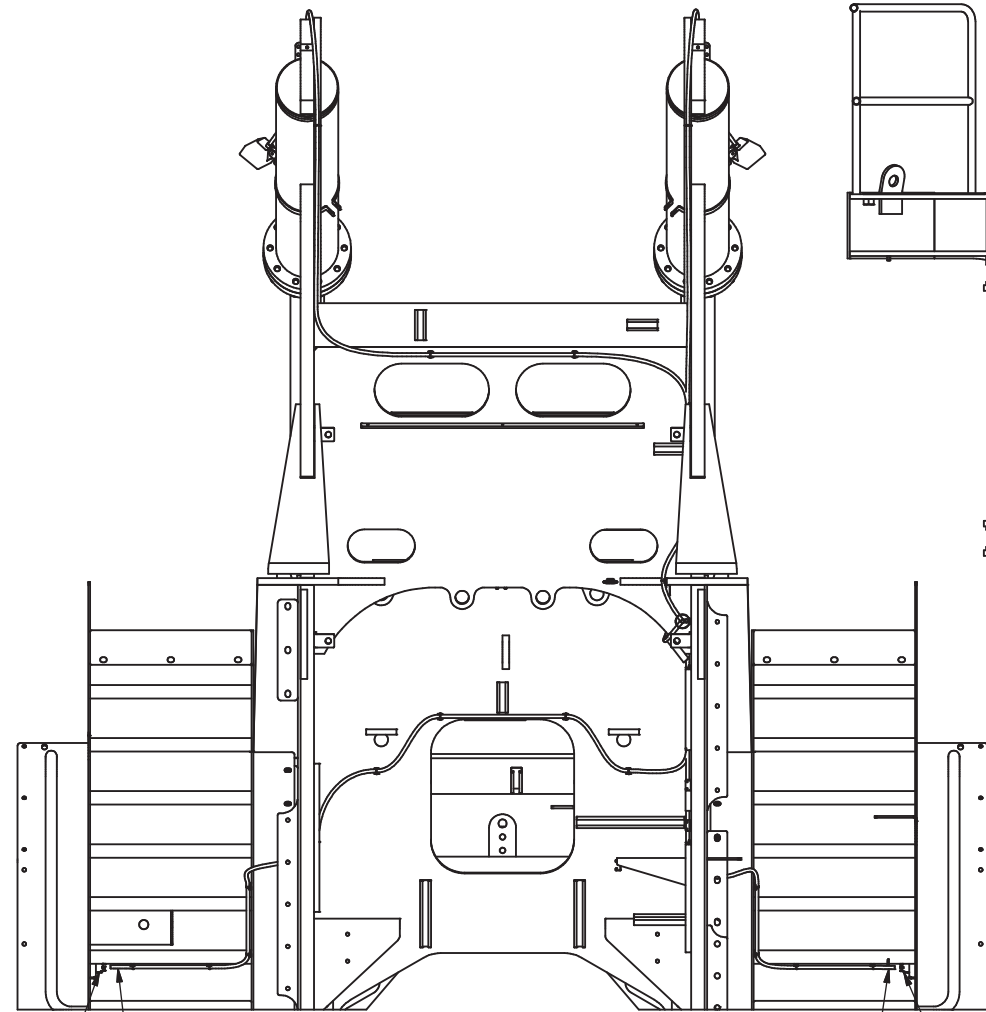


DETAIL 5L5  
GREASE SYS & POWER

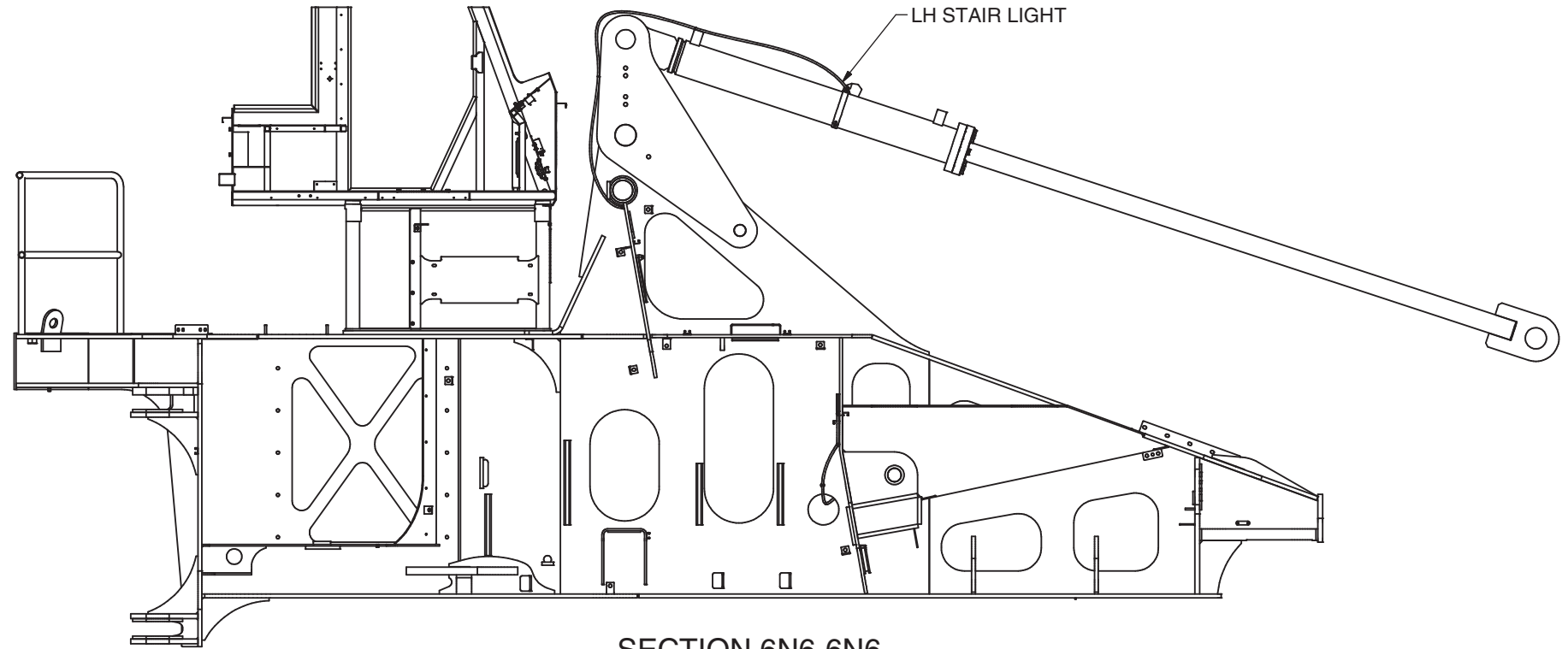


SECTION 5M5-5M5  
A/C CLUTCH & FIRE RELAY WIRING

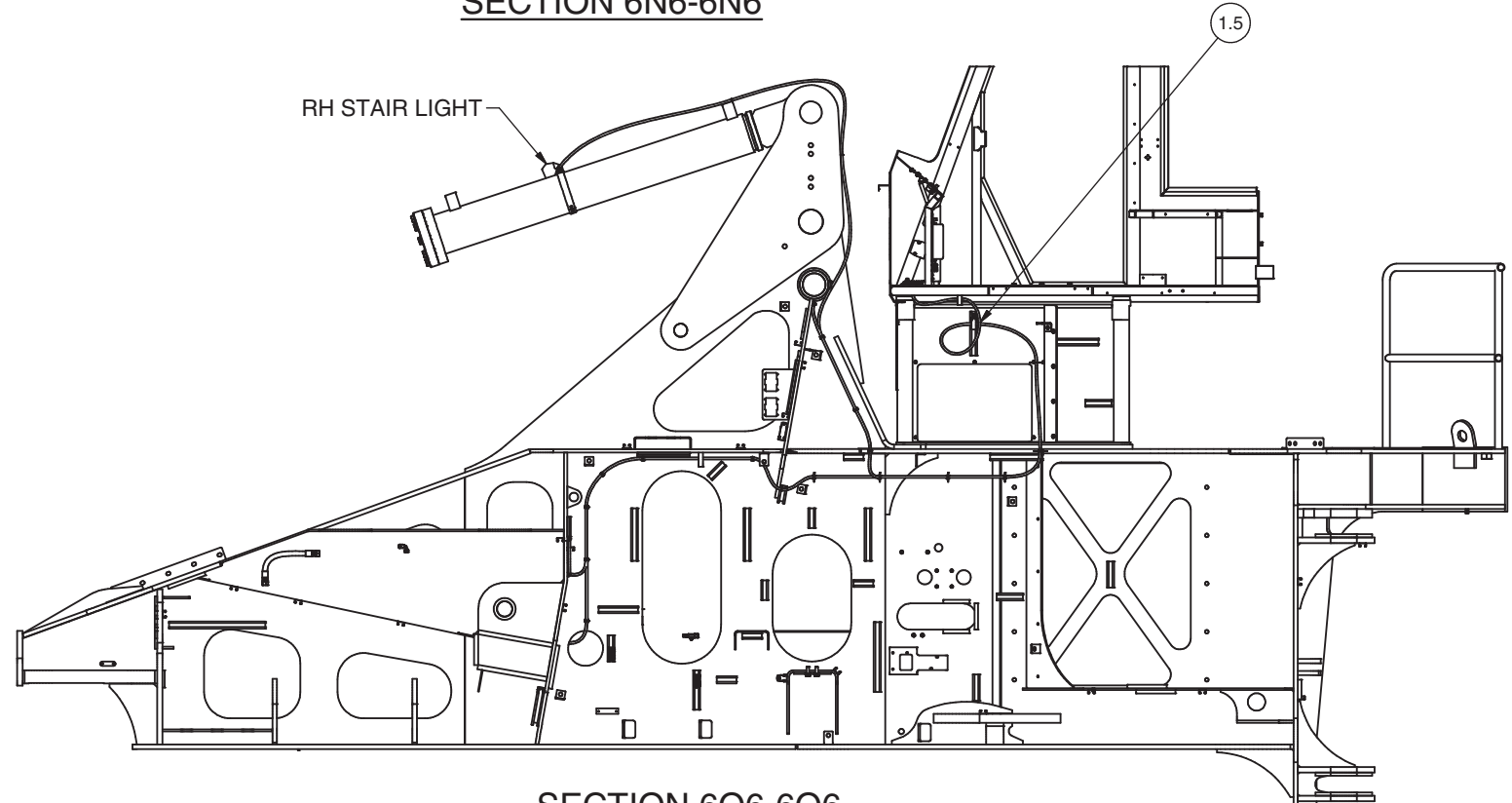




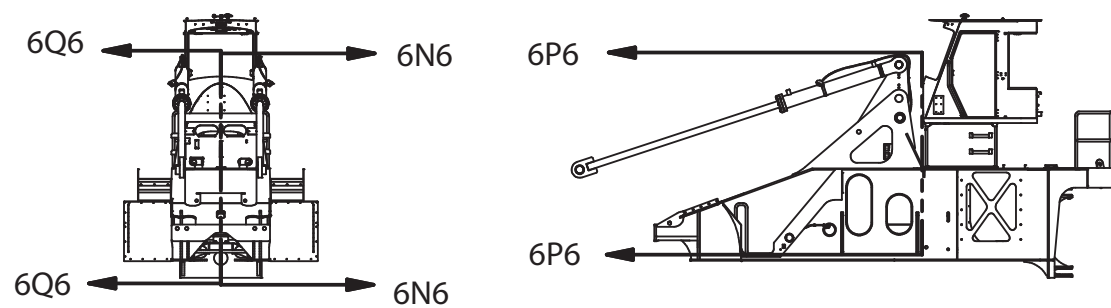
**SECTION 6P6-6P6**  
**STAIR SWITCH WIRING**



**SECTION 6N6-6N6**

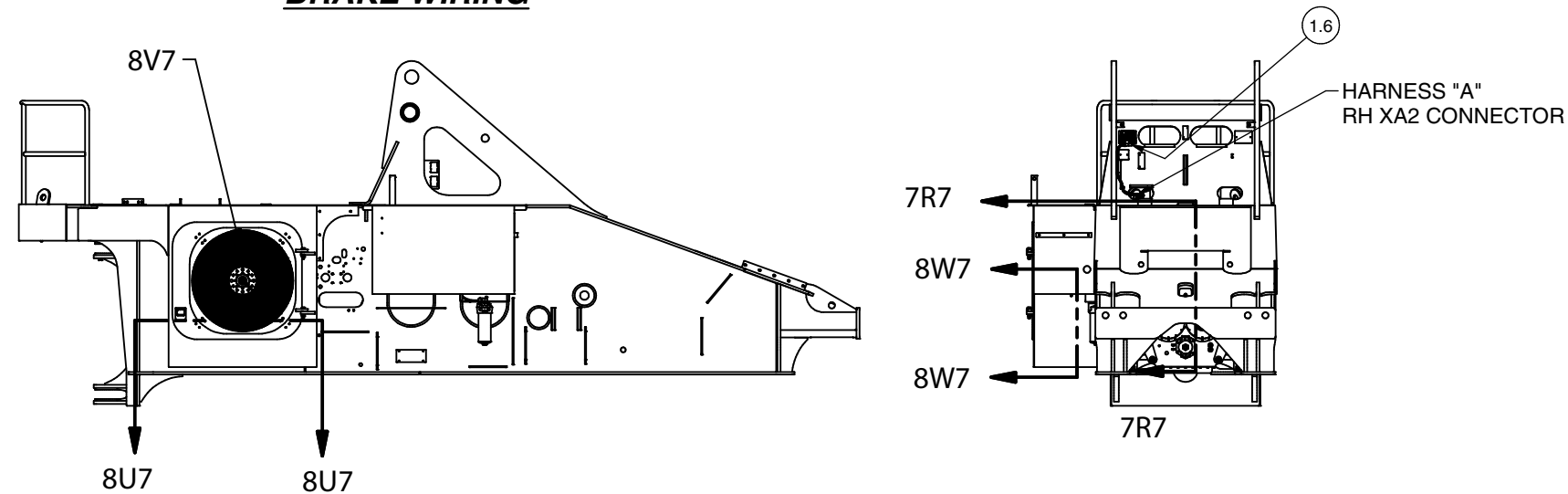
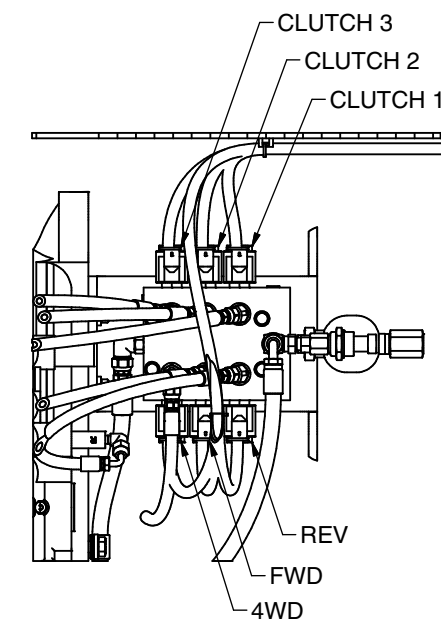
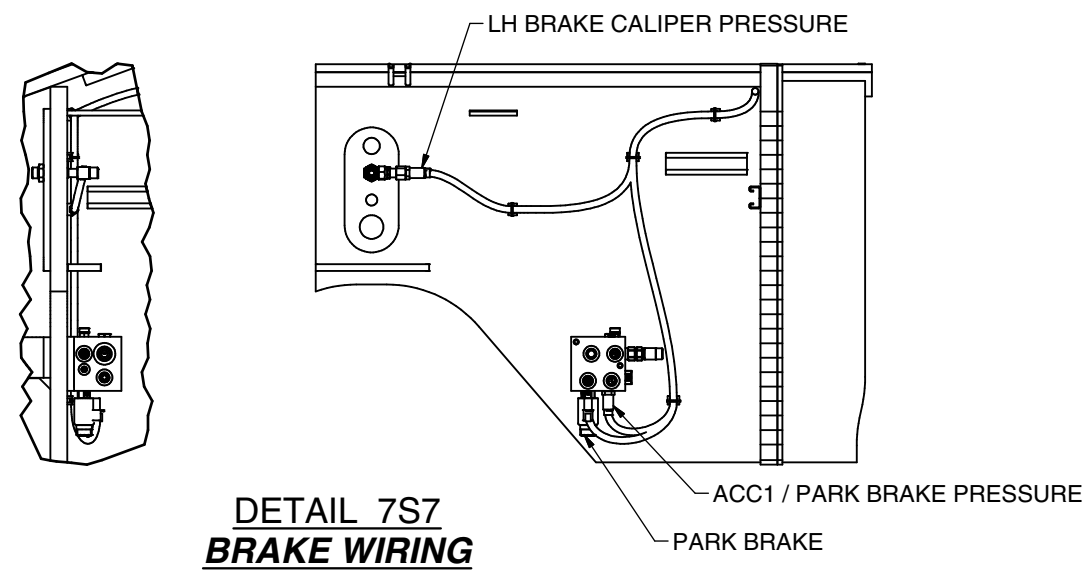
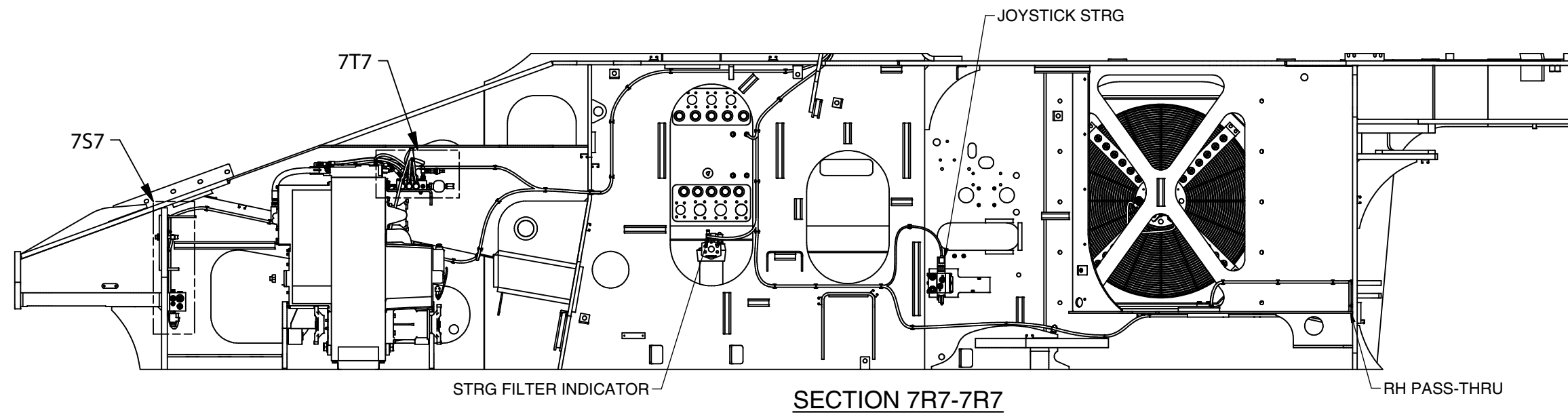


**SECTION 6Q6-6Q6**

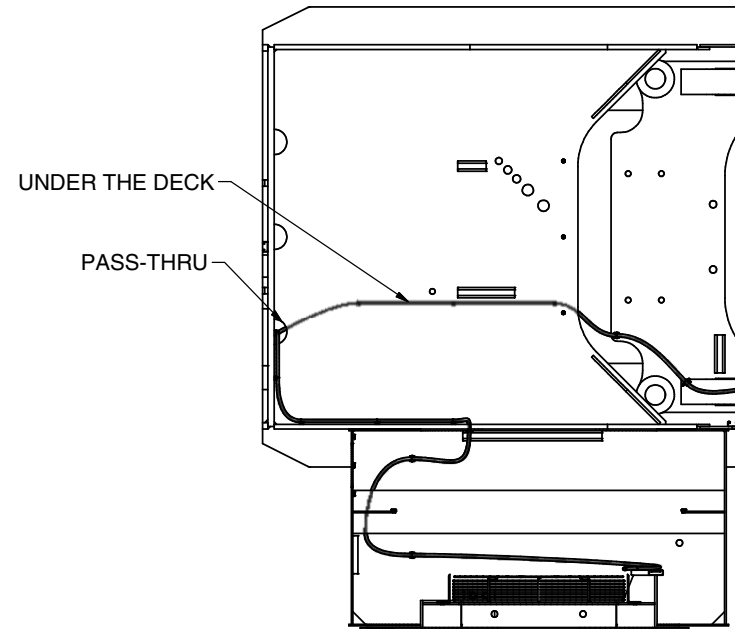




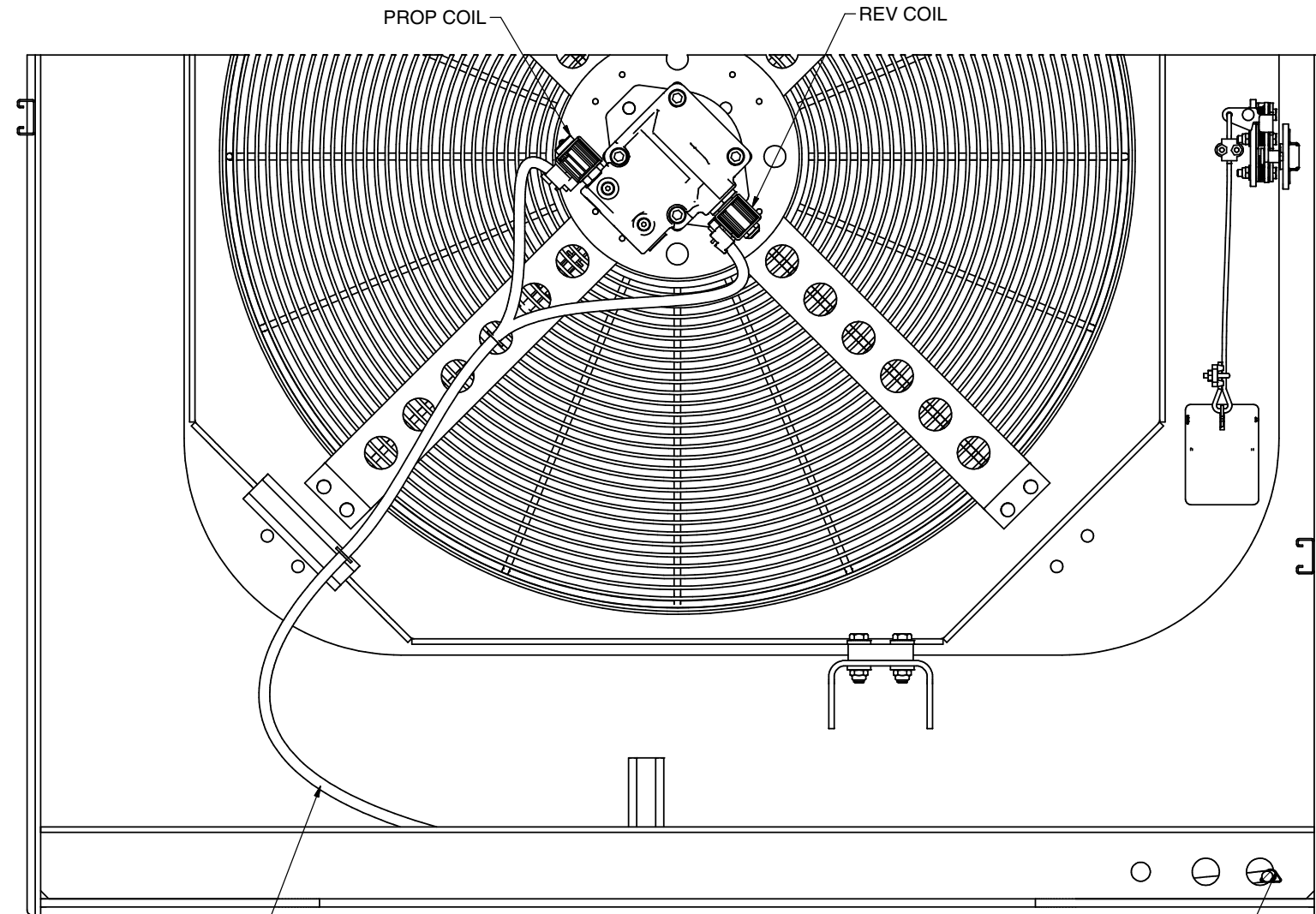
WIRE HARNESS, RH XA2



WIRE HARNESS, RH XA2



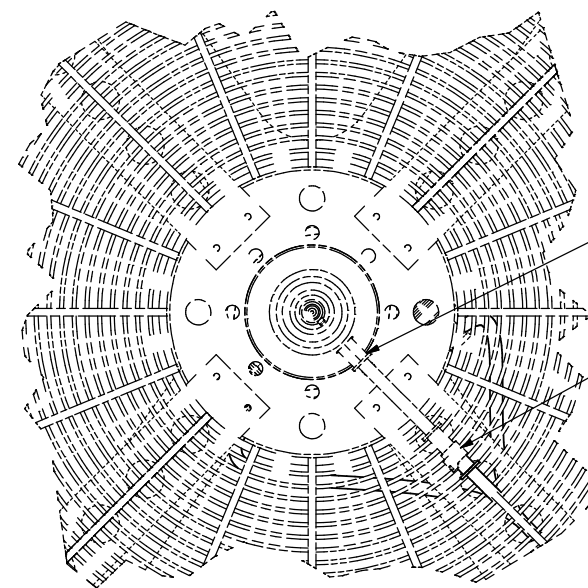
**SECTION 8U7-8U7**  
**RH COOLING PACKAGE WIRING ROUTING**



ROUTE ALONG  
MOTOR PLUMBING

**SECTION 8W7-8W7**  
**RH FAN WIRING**  
**ON INSIDE OF DOOR**

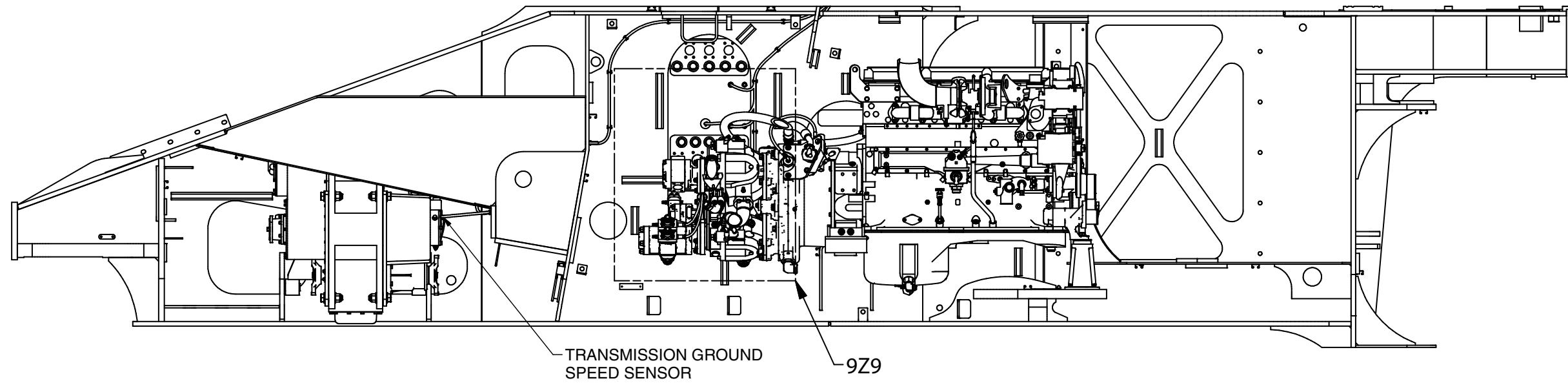
PASS-THRU



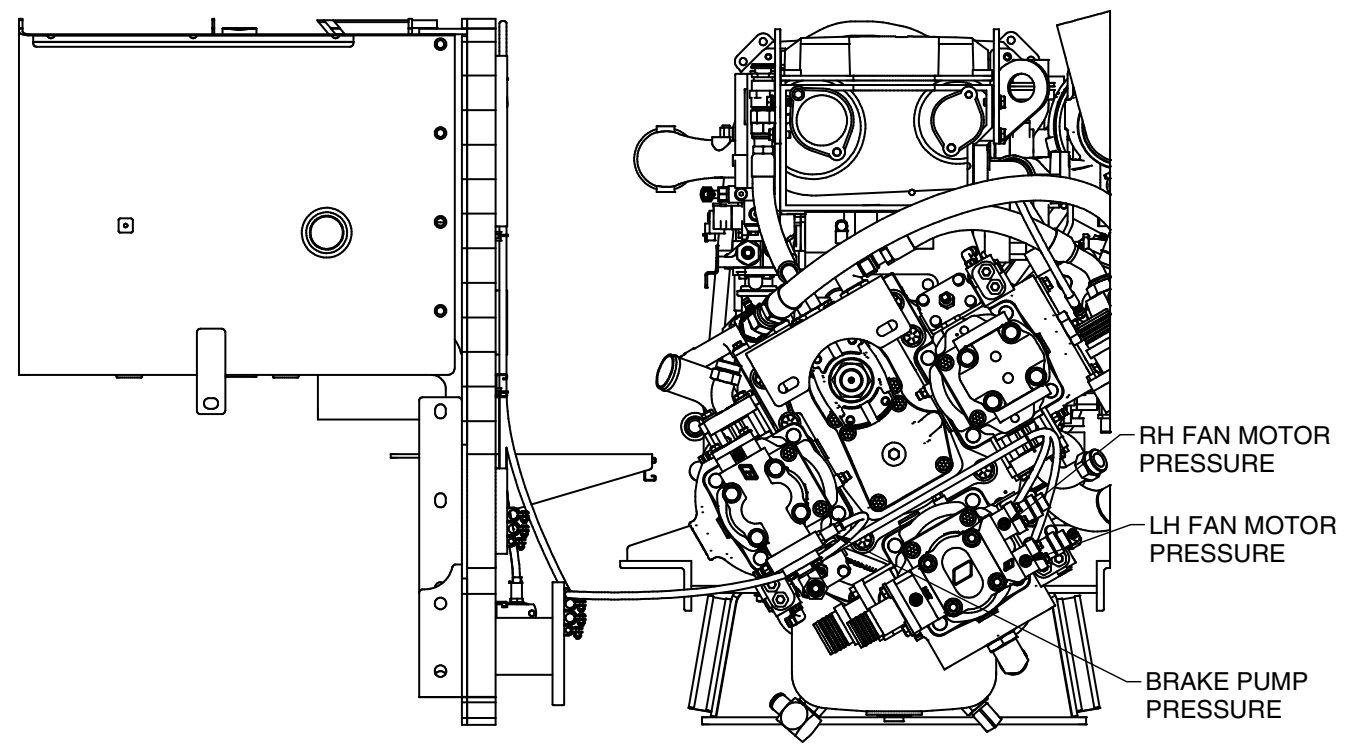
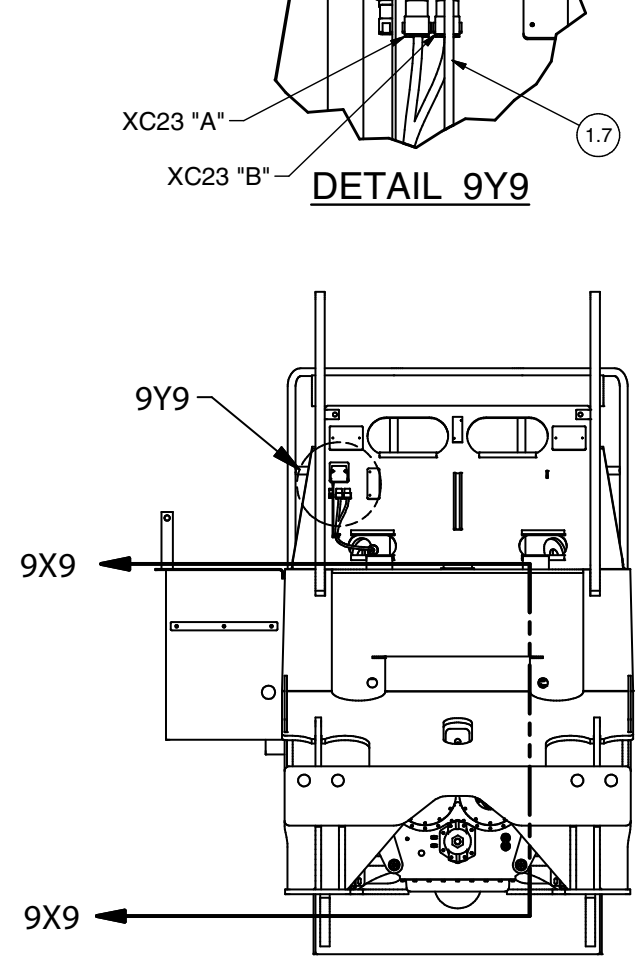
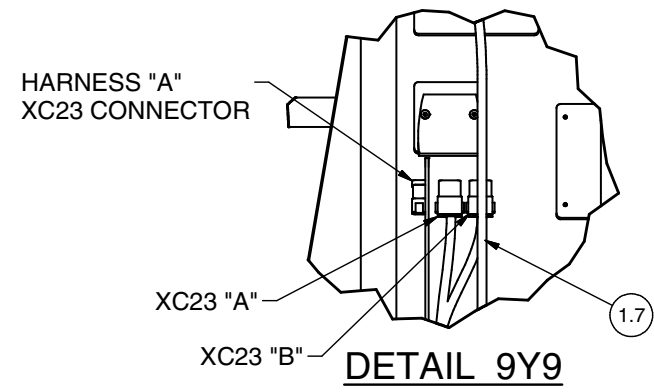
FAN MOTOR SPEED SENSOR

SPEED SENSOR CONNECTOR

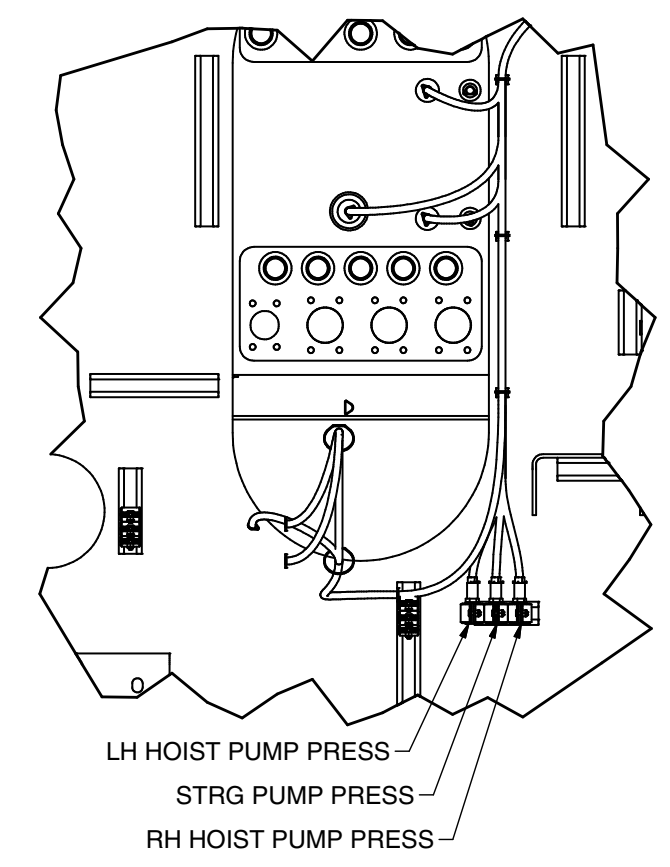
**DETAIL 8V7**  
**RH FAN SPEED SENSOR**  
**ON FAN SIDE OF GUARD**



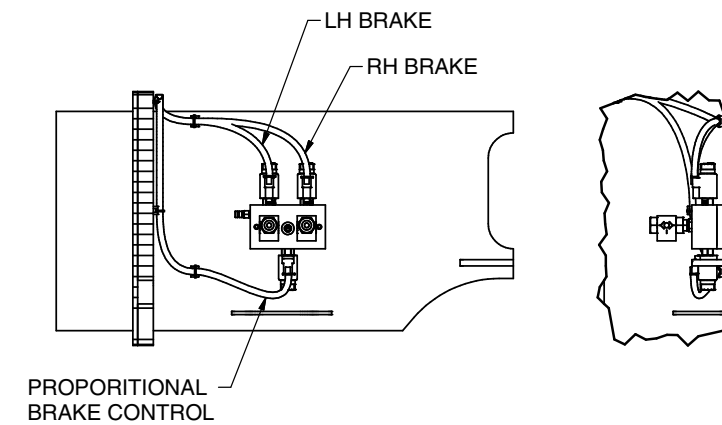
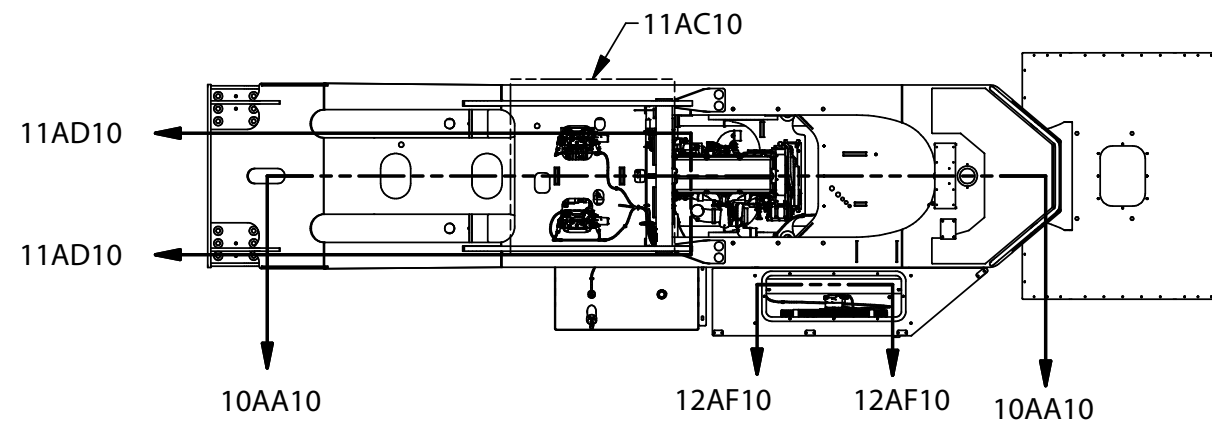
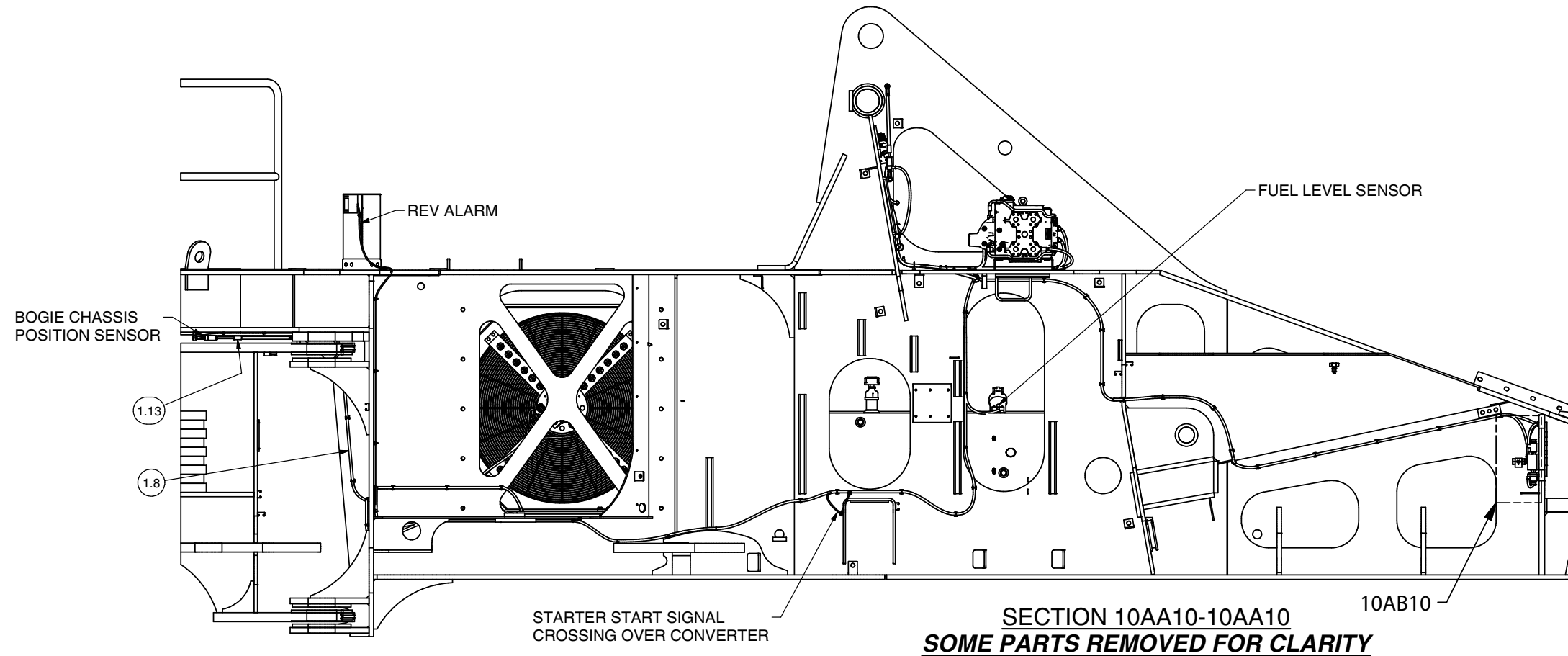
**SECTION 9X9-9X9**  
SOME PARTS REMOVED FOR CLARITY



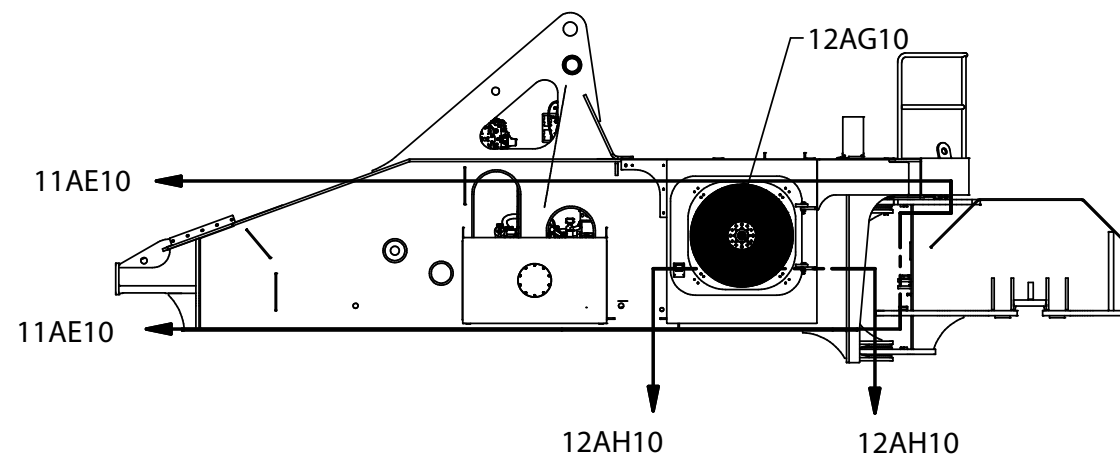
**DETAIL 9Z9**  
ENGINE PRESSURE TRANSDUCER WIRING  
POWER UNIT REMOVED FOR CLARITY IN RIGHT VIEW

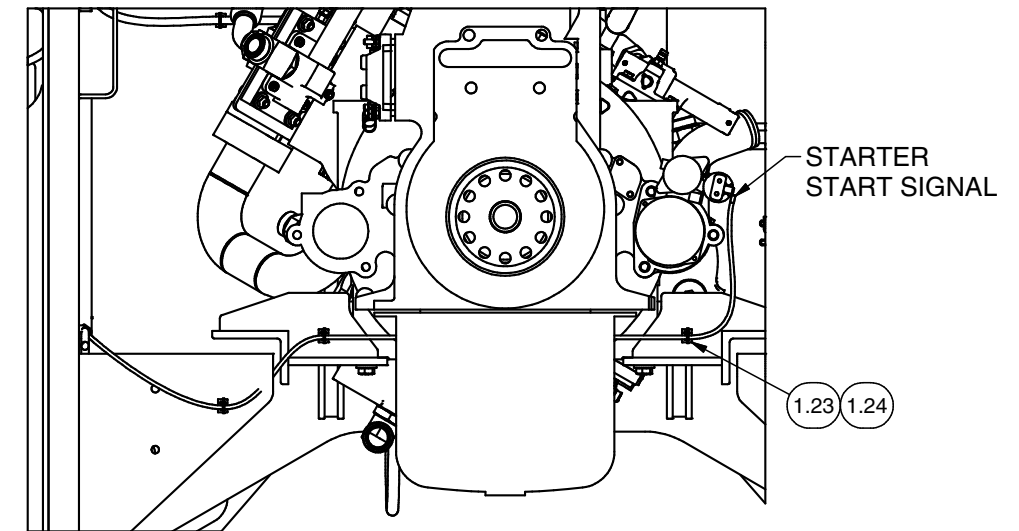
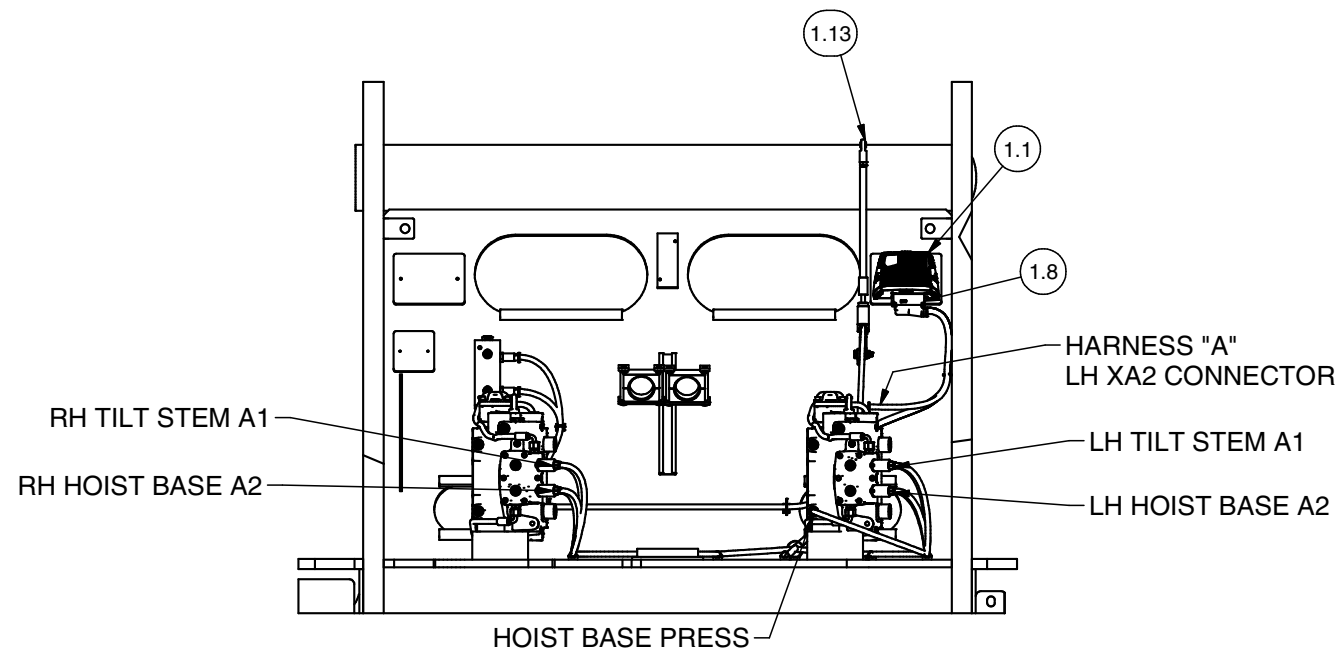


WIRE HARNESS, LH XA2

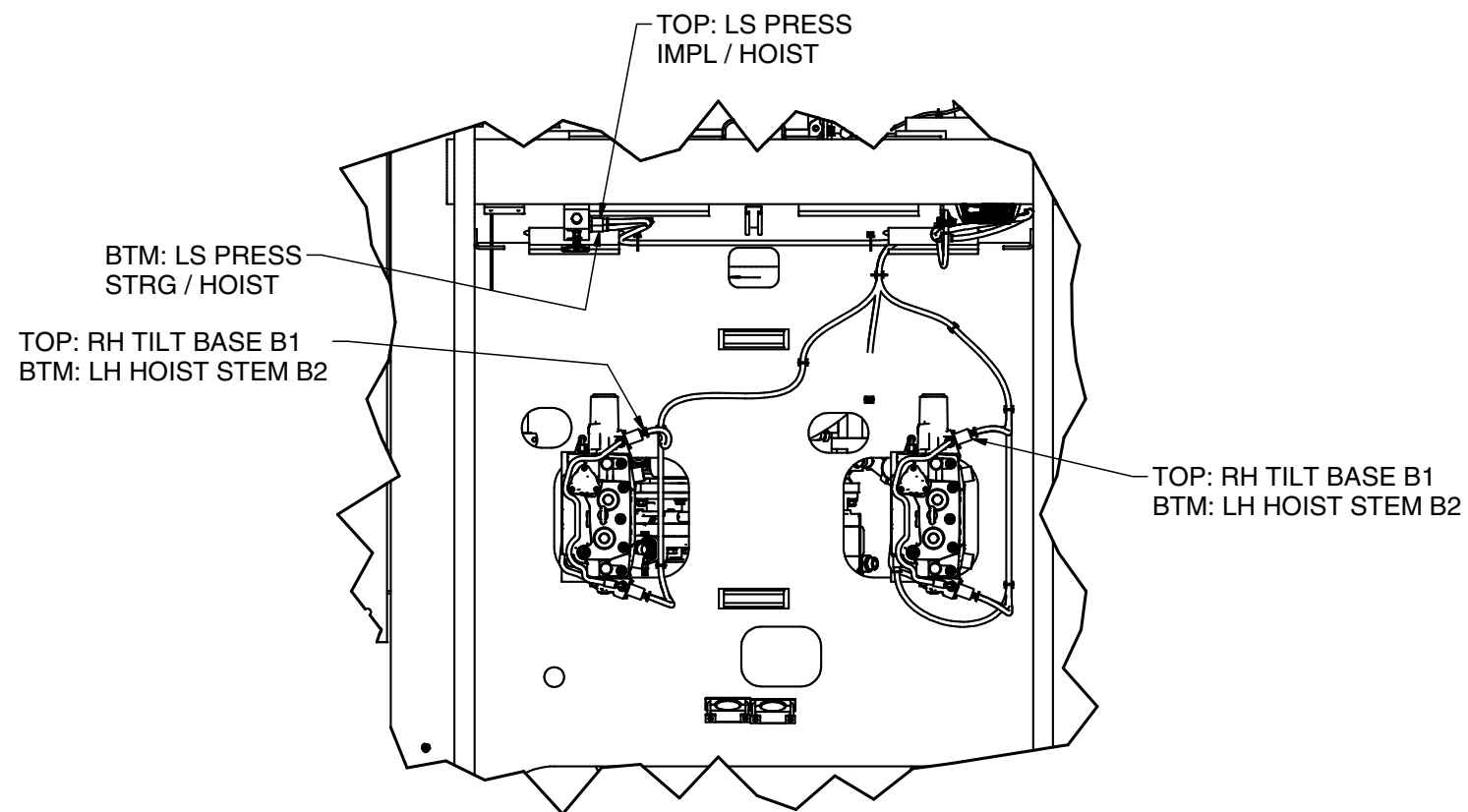


**DETAIL 10AB10  
BRAKE BUTTONS**

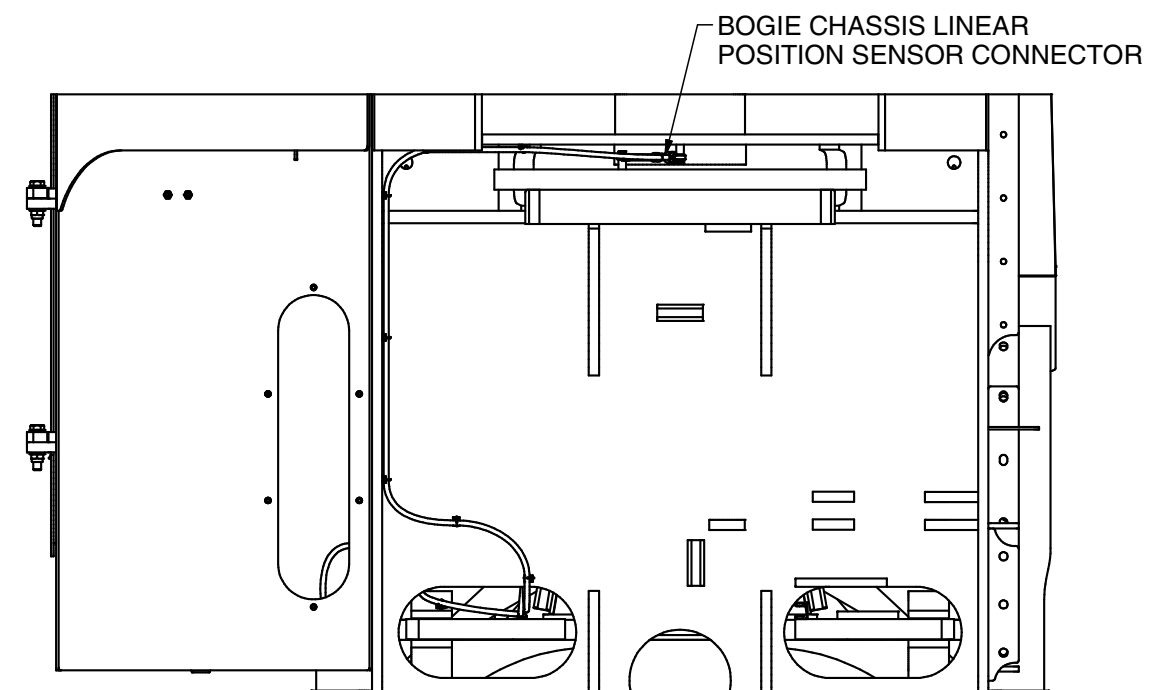




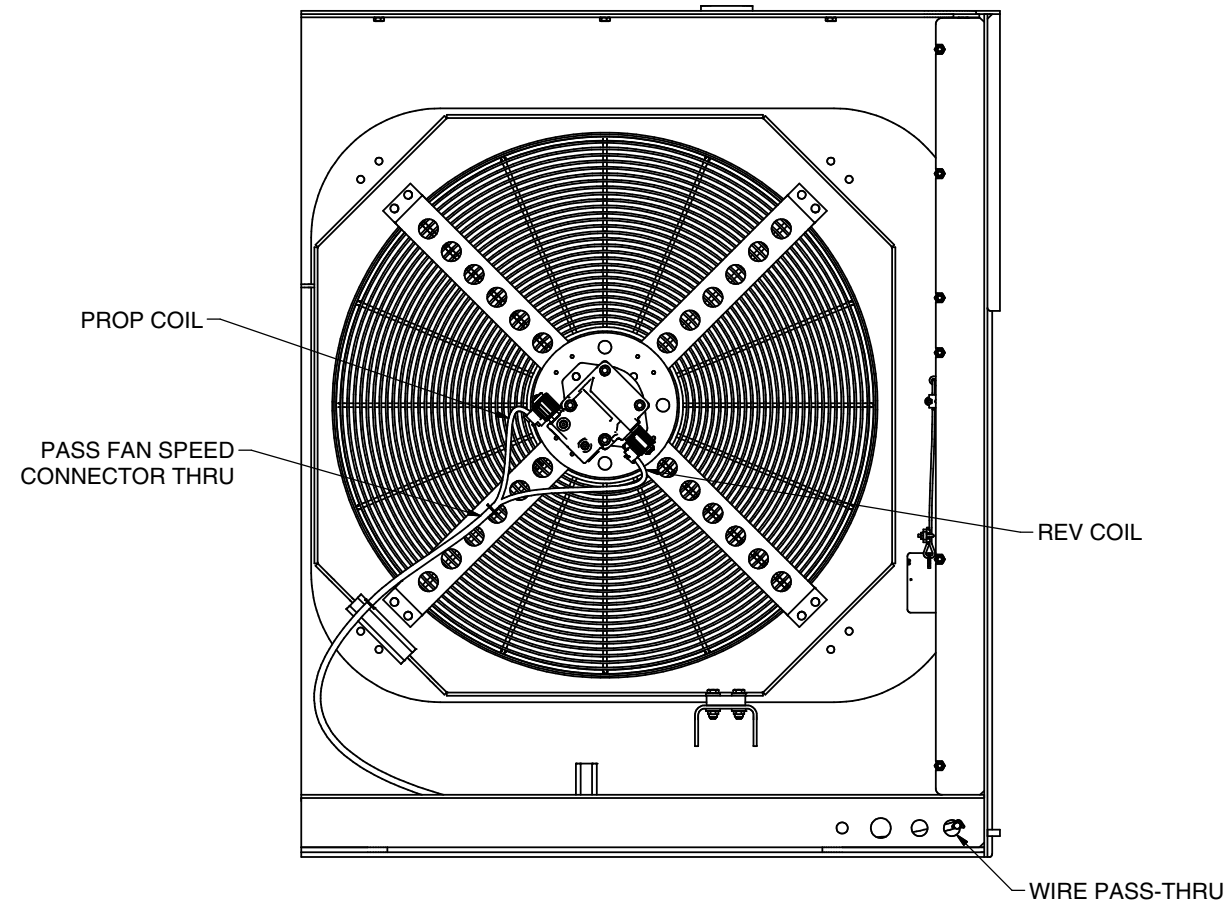
**SECTION 11AD10-11AD10**  
**STARTER WIRING ROUTE**



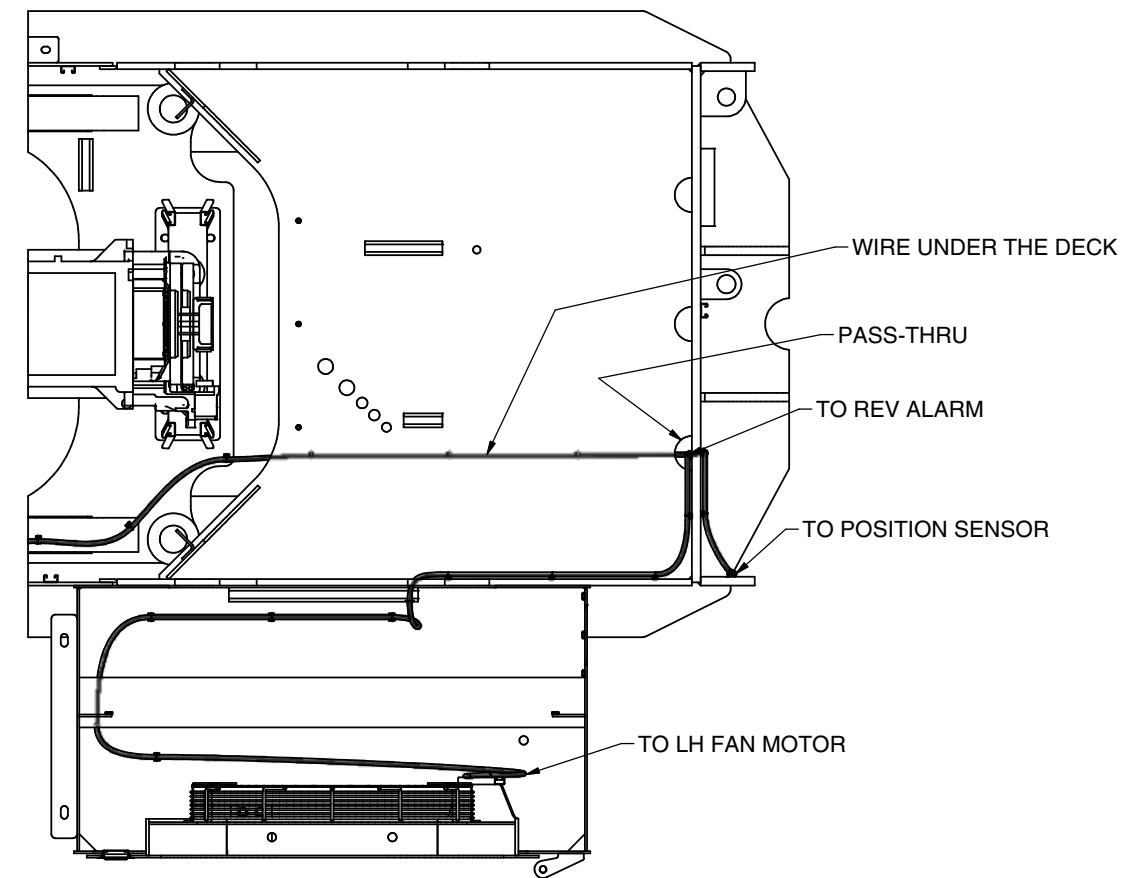
**DETAIL 11AC10**  
**HOIST & TILT VALVE WIRING**



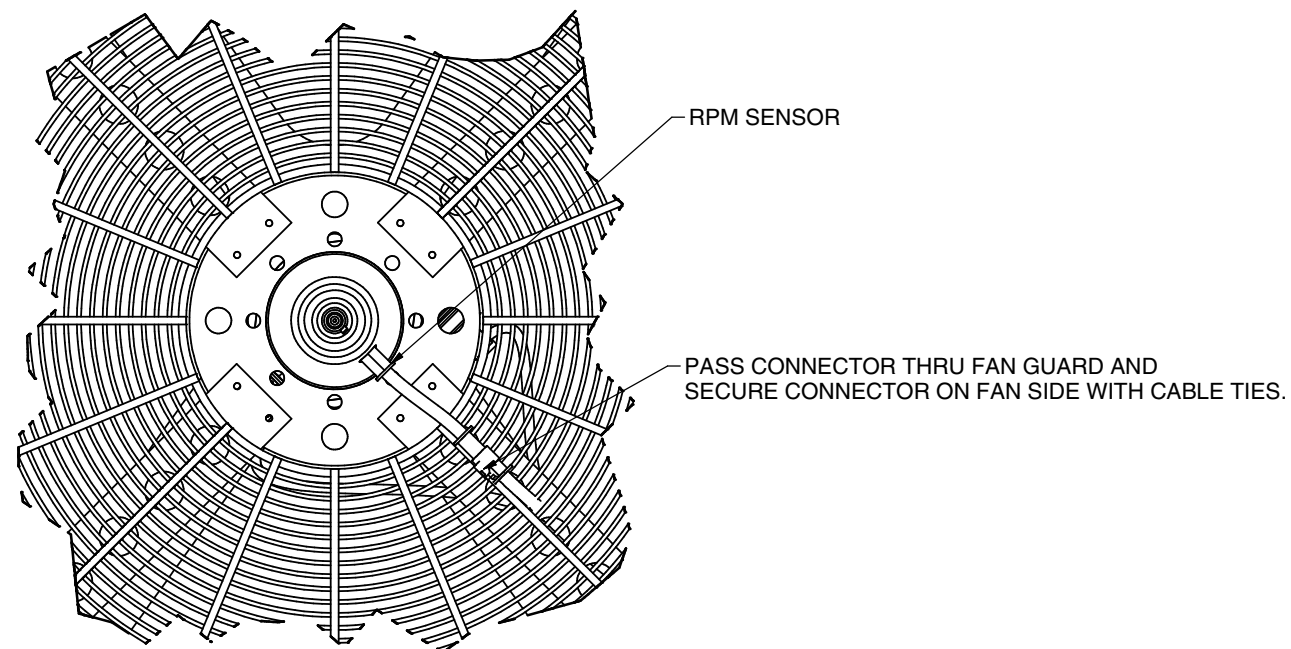
**SECTION 11AE10-11AE10**  
**CHASSIS BOGIE POSITION SENSOR WIRING**



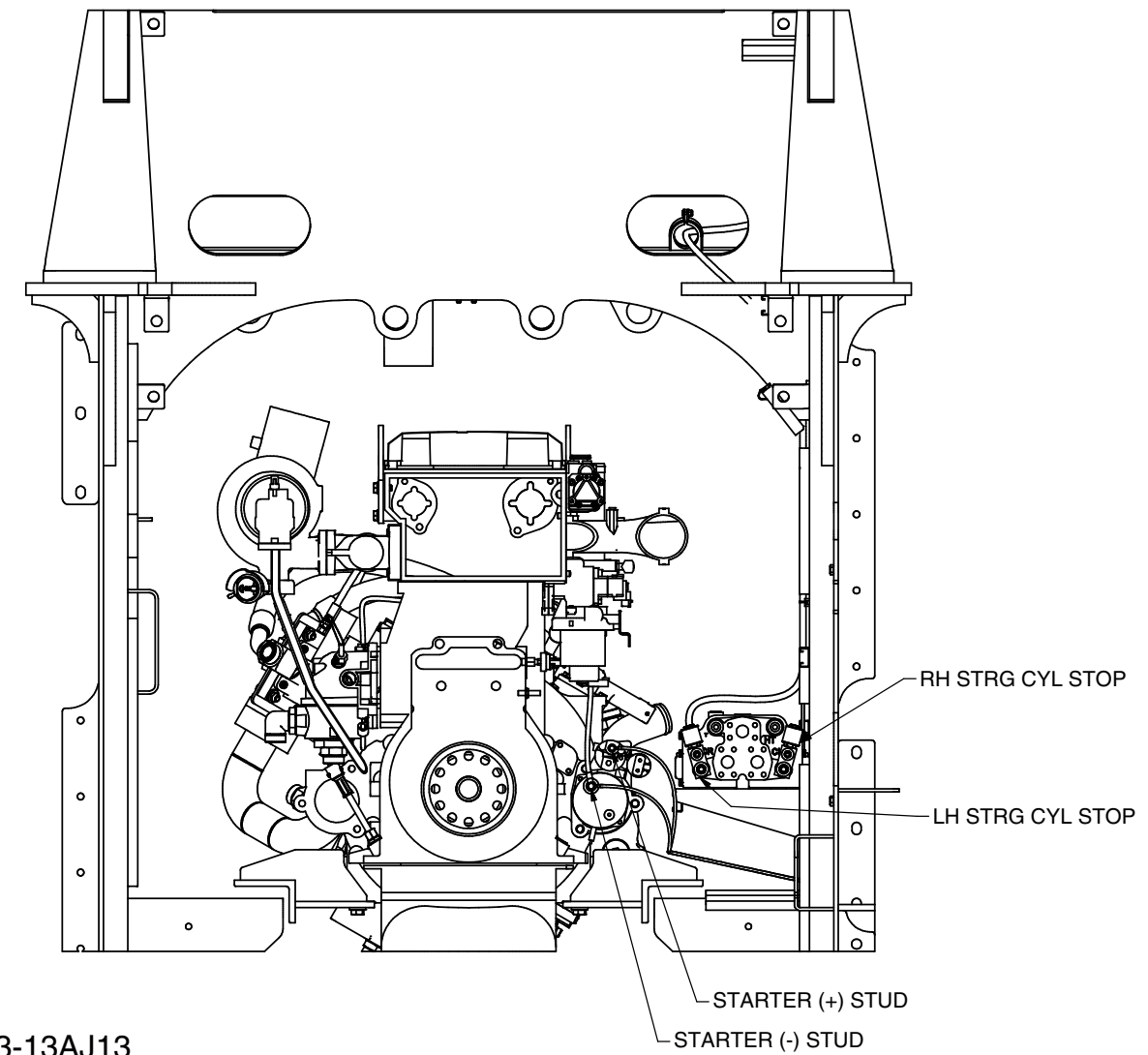
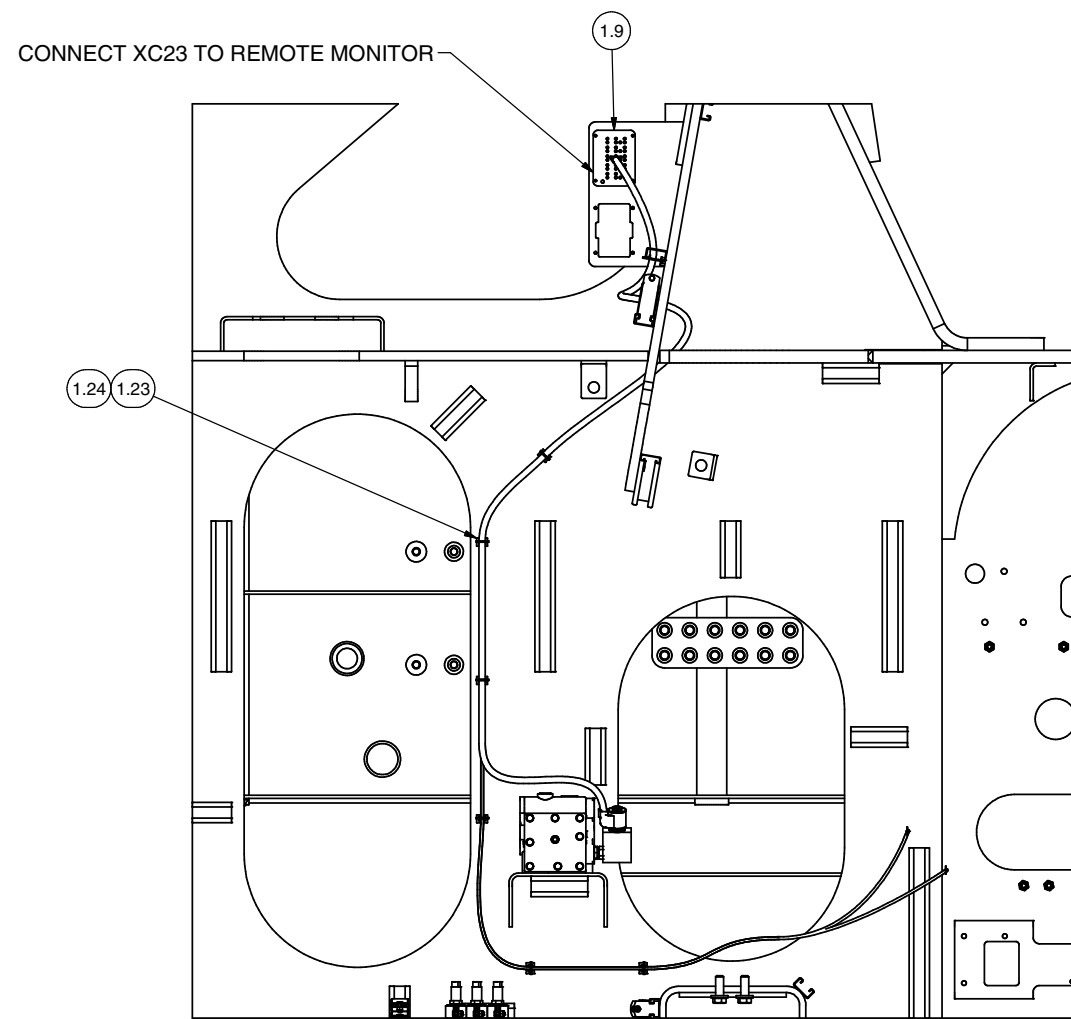
**SECTION 12AF10-12AF10**  
**MOTOR SIDE OF FAN DRIVE**



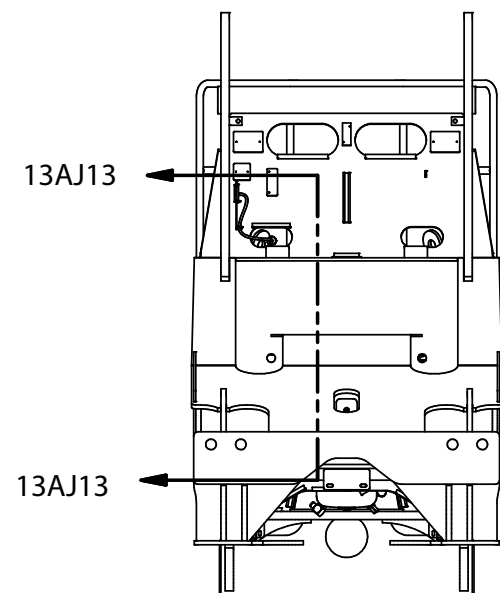
**SECTION 12AH10-12AH10**

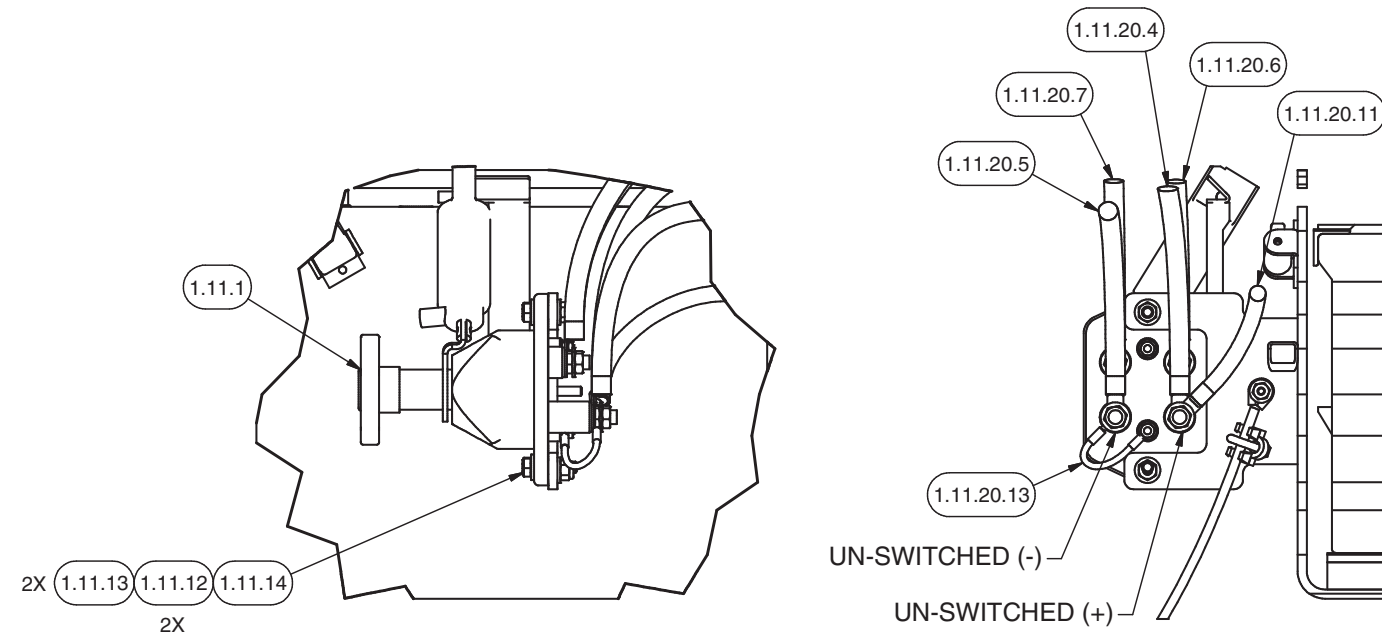


**DETAIL 12AG10**  
**FAN SIDE**

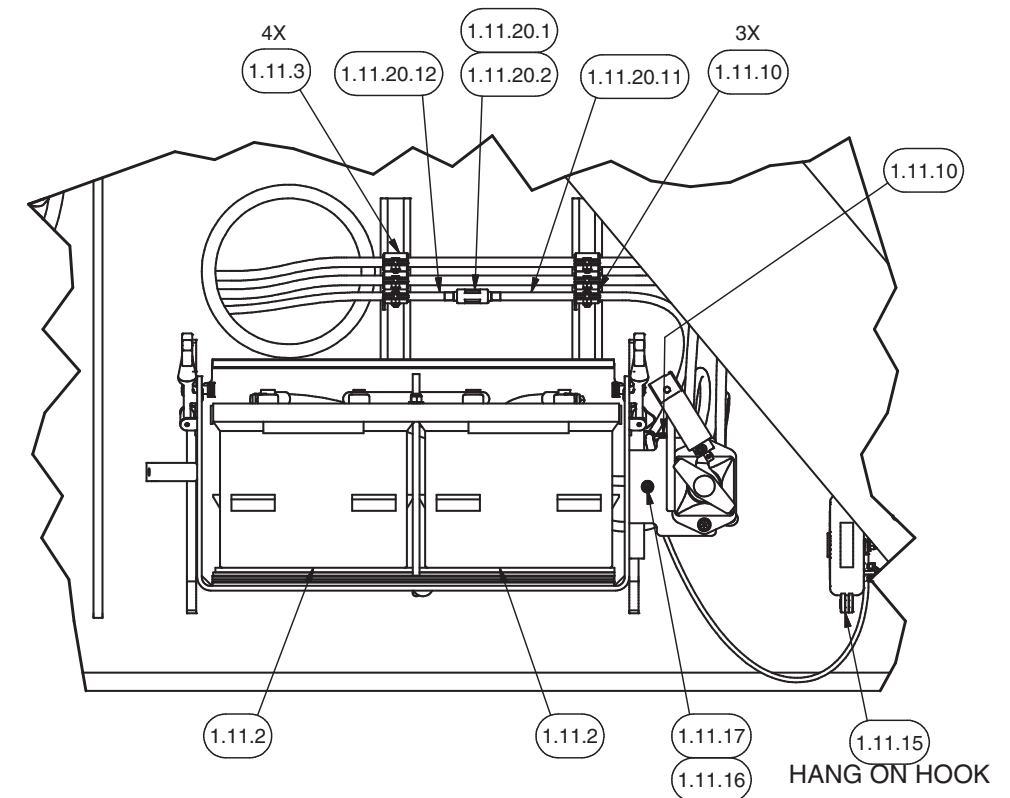
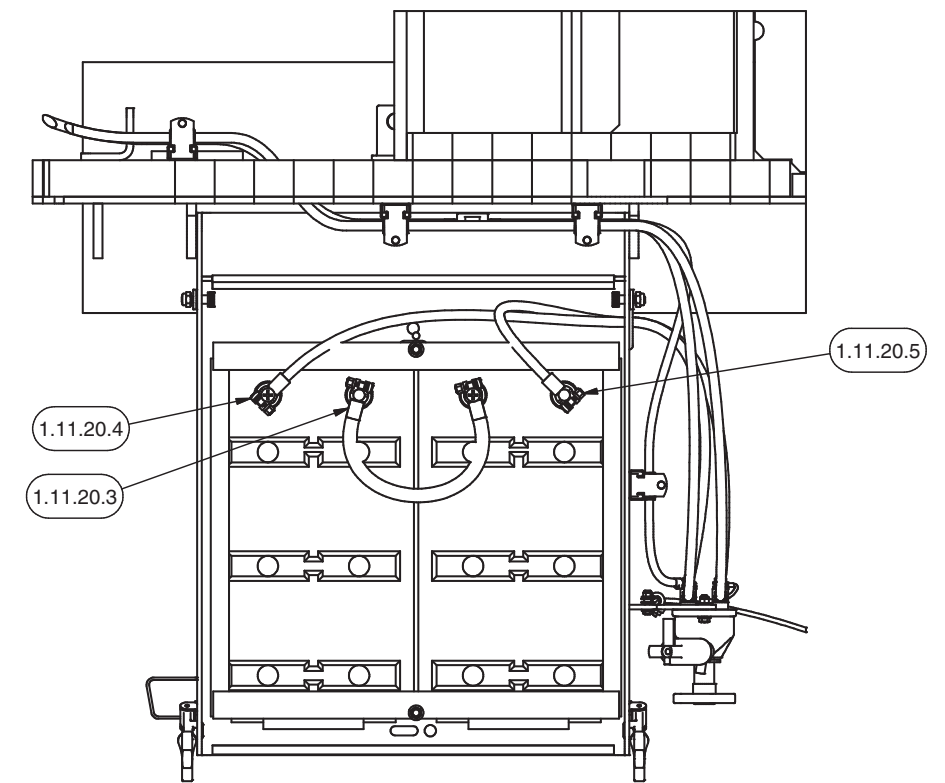
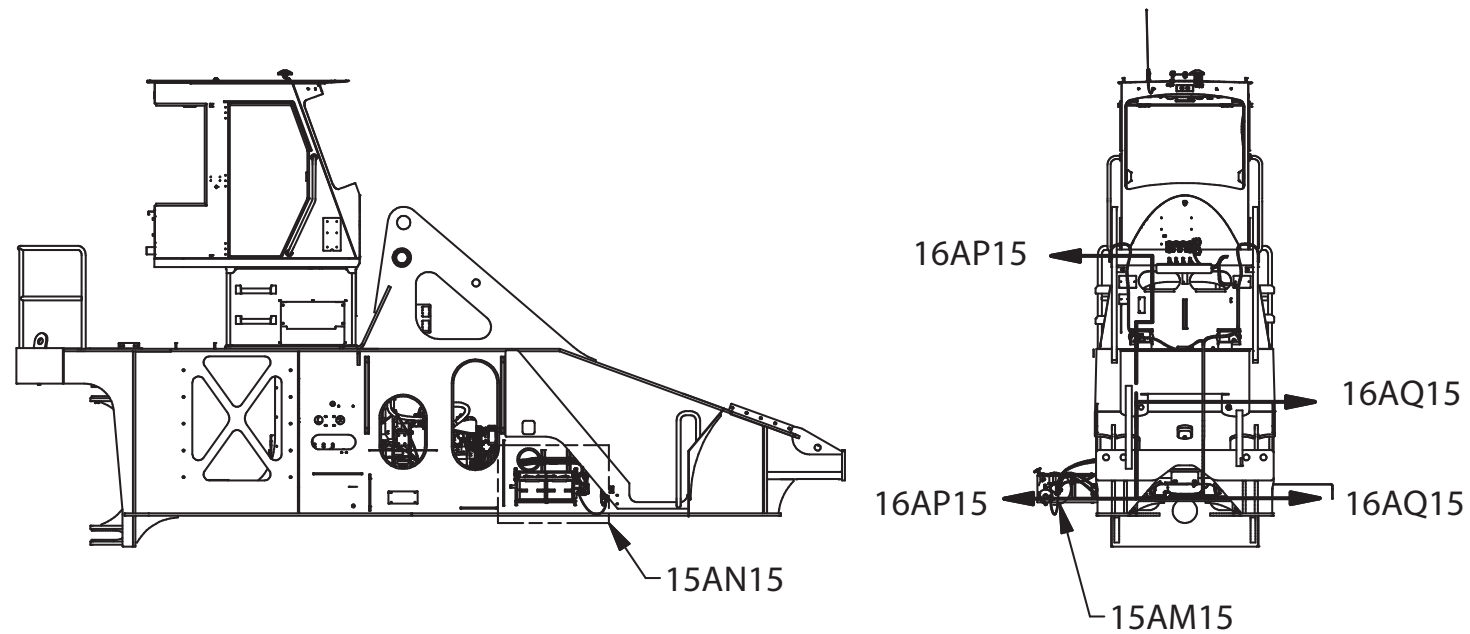


**SECTION 13AJ13-13AJ13**  
**STRG CYL STOPS**  
**SOME PARTS REMOVED FOR CLARITY**



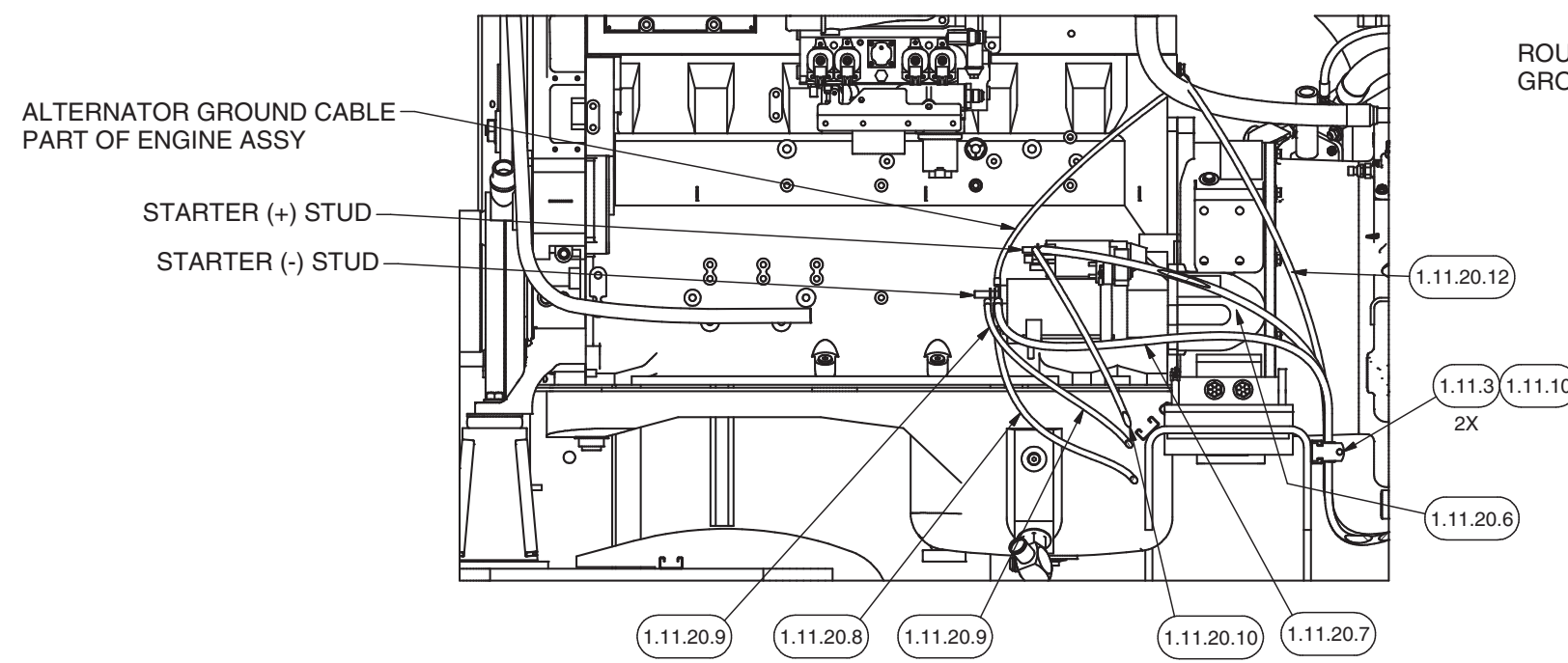
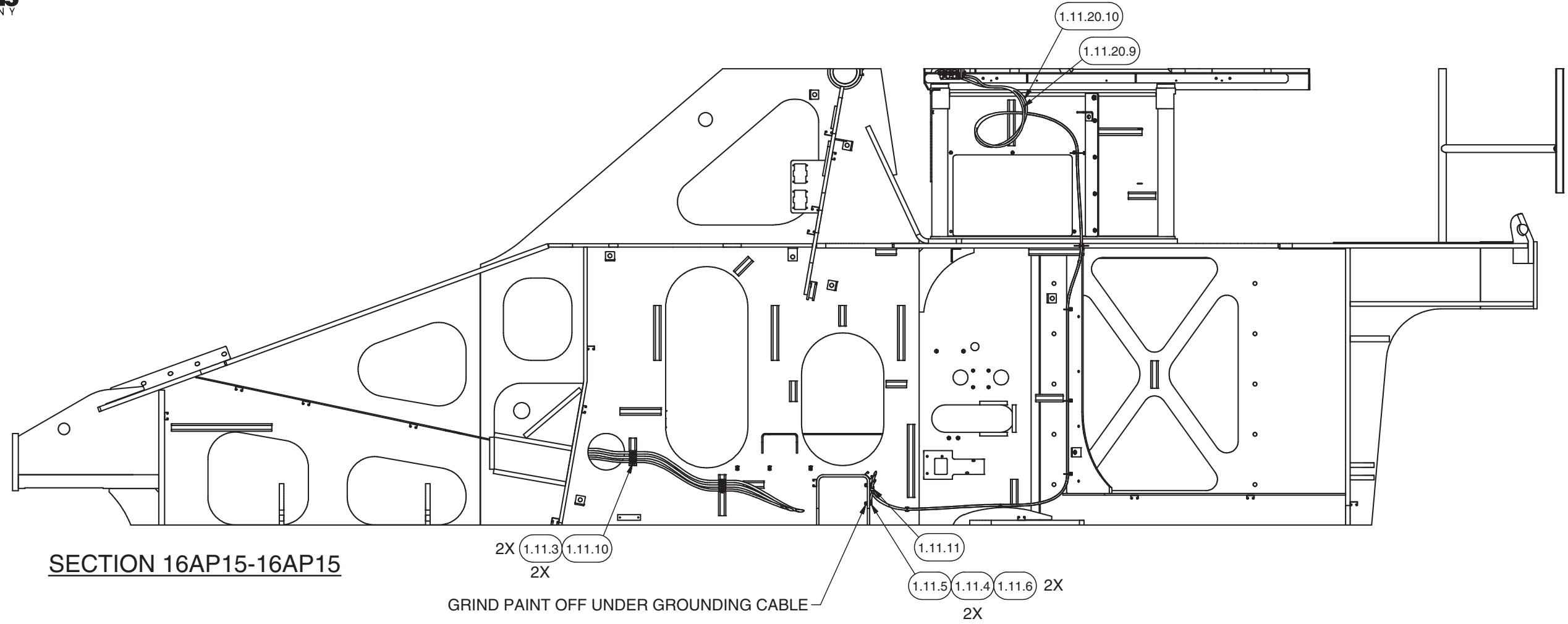


**DETAIL 15AM15**  
**BATTERY DISCONNECT SWITCH**  
**PARTS REMOVED FOR CLARITY**

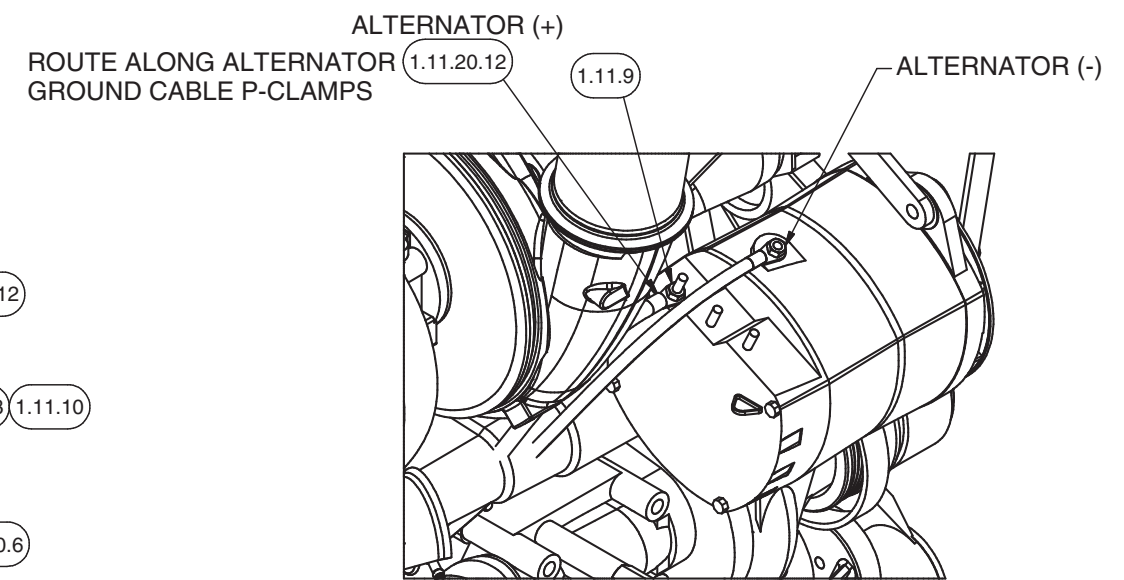


**DETAIL 15AN15**  
**BATTERY BOX WIRING**  
**SECURE BATTERY WITH FRAME**  
**SOME PARTS REMOVED FOR CLARITY**





**SECTION 16AQ15-16AQ15  
STARTER WIRING**



**ALTERNATOR WIRING**