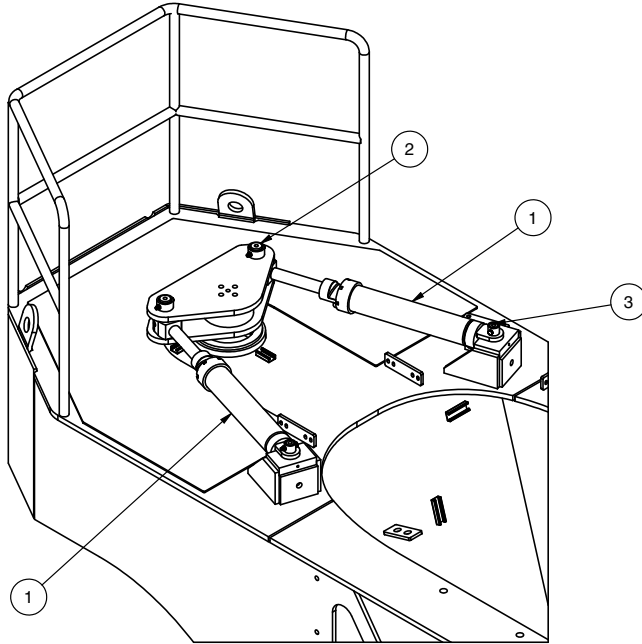
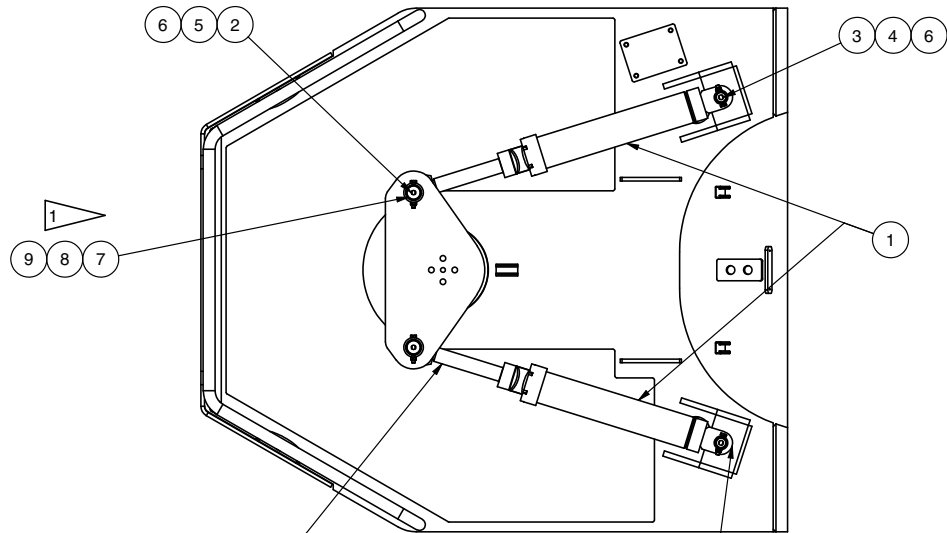


Steering Cylinder Installation



NOTE:

USE SHIMS TOP AND BOTTOM OF CYLINDER EYE TO ELIMINATE BINDING/PLAY OF STEERING CYLINDERS OVER FULL RANGE OF EXTENSION



LOCATE STEM SIDE GREASE PORT TO OUTSIDE OF MACHINE (TYP)

ORIENTATE BASE END OF CYLINDER WITH LOCK COLLAR UP (TYP)

Item	Part No.	Qty	Description	Item	Part No.	Qty	Description
	598952		Steering Cylinder Installation	5	238735	2	. Capscrew
1	* 599534	2	. Cylinder Assembly	6	302402W	4	. Locknut
2	591737	2	. Pin	7	Y161247.16	4	. Shim 2"ID x 18GA
3	591736	2	. Pin	8	Y161247.17	4	. Shim 2"ID x 14GA
4	293653W	2	. Capscrew	9	Y161247.18	4	. Shim 2"ID x 10GA

* See Separate Coverage