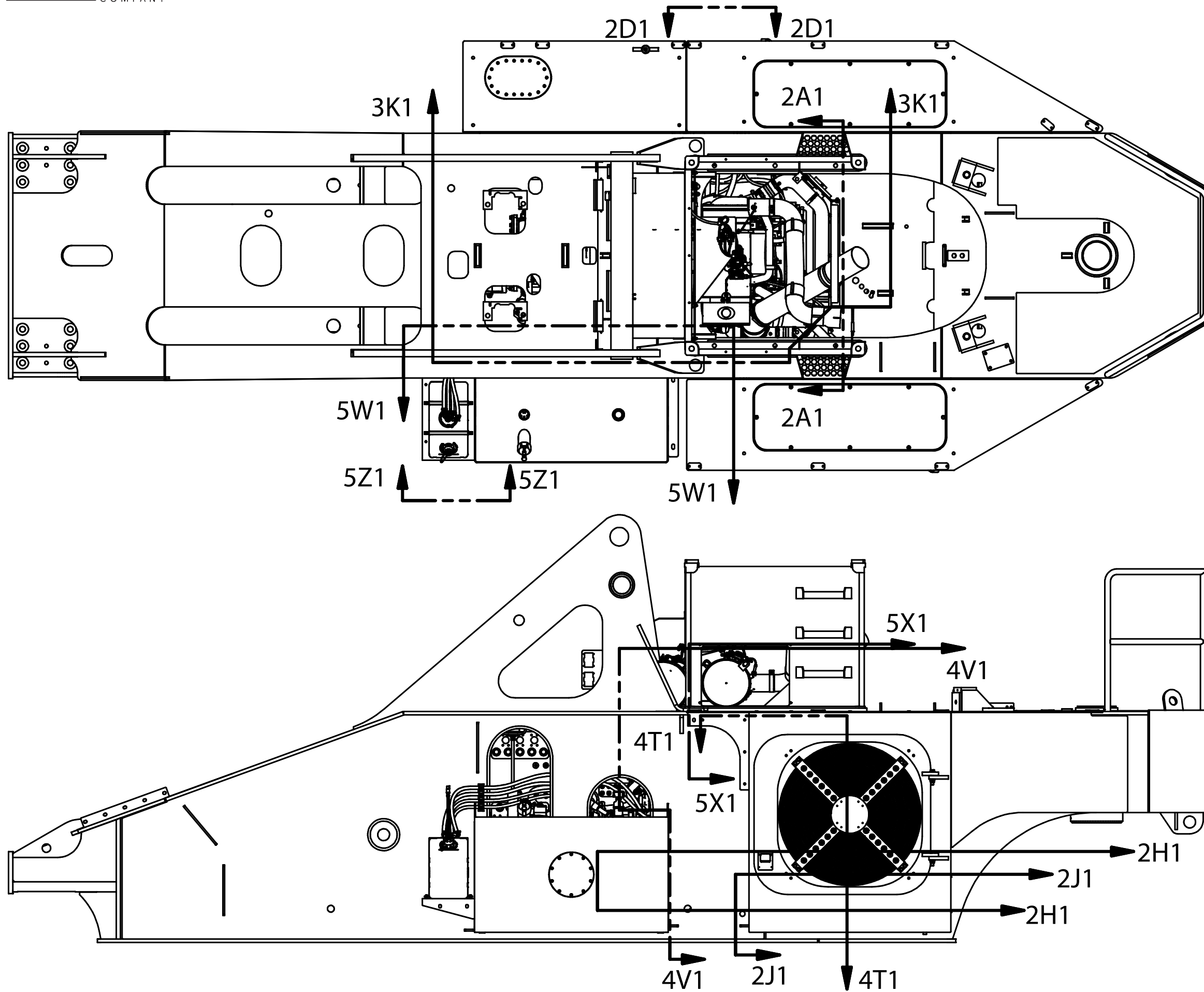
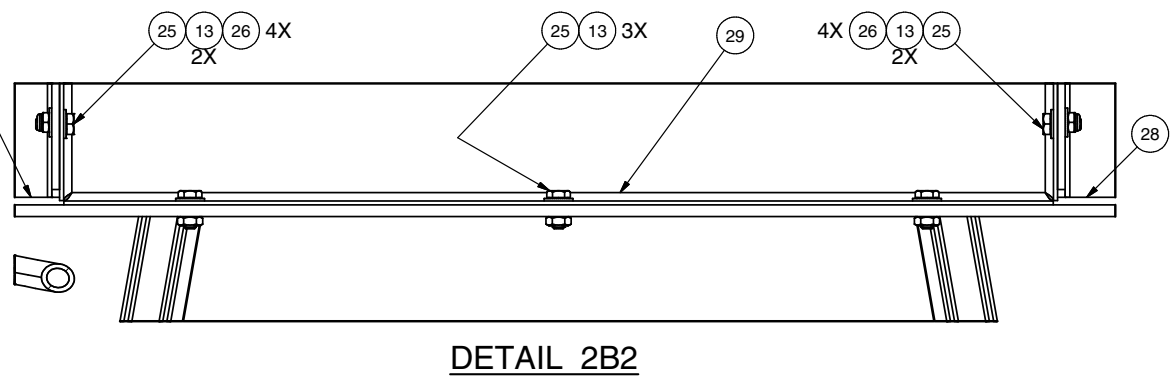
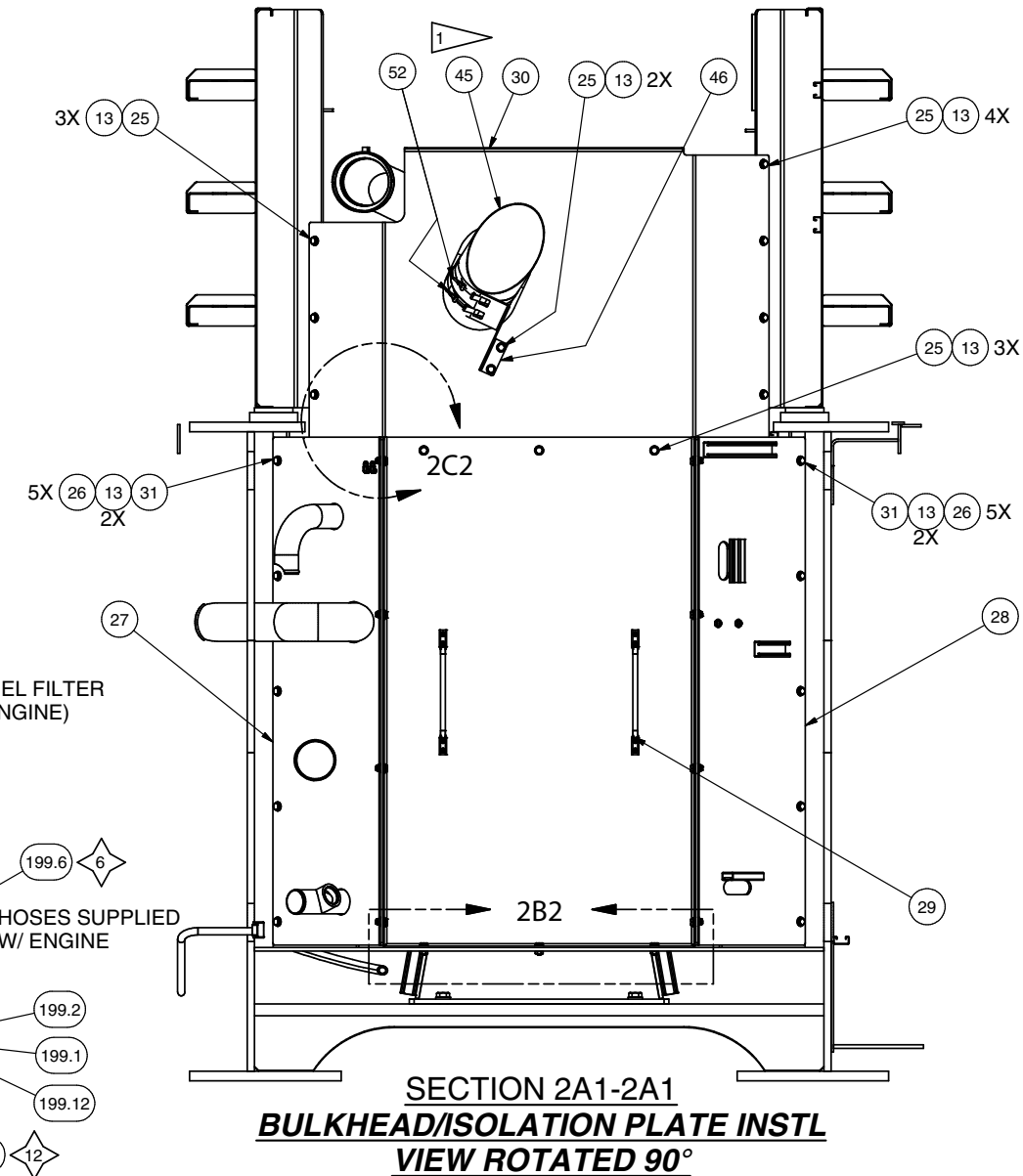
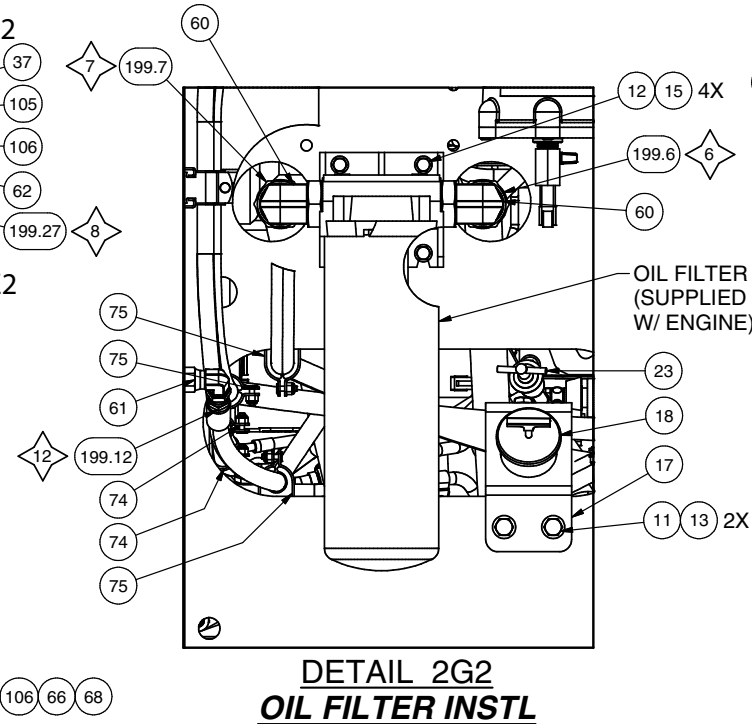
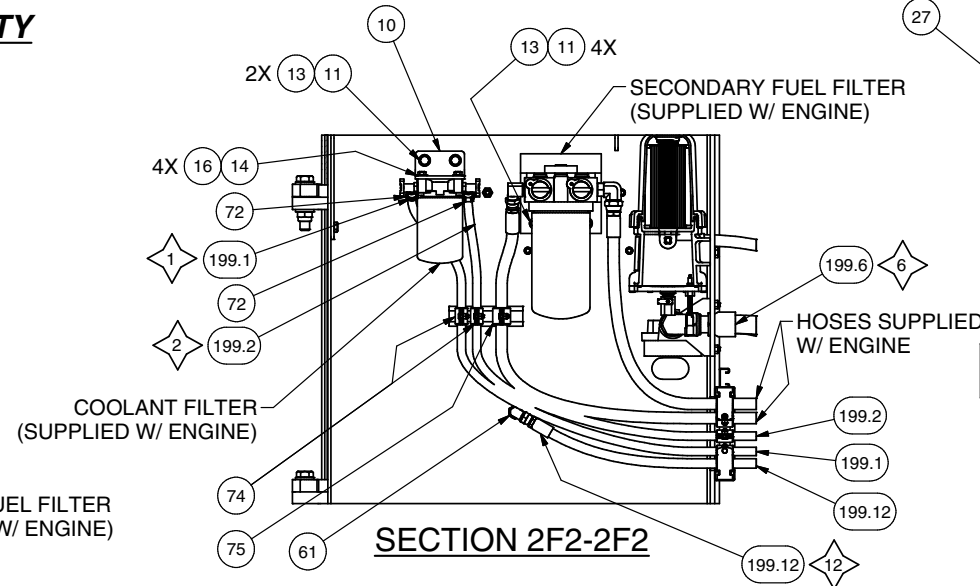
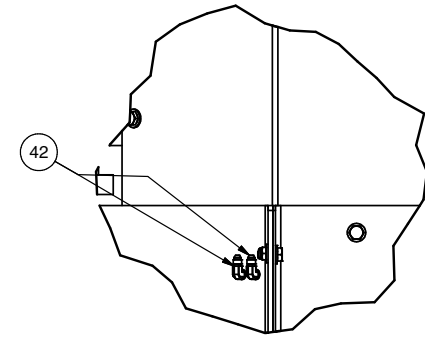
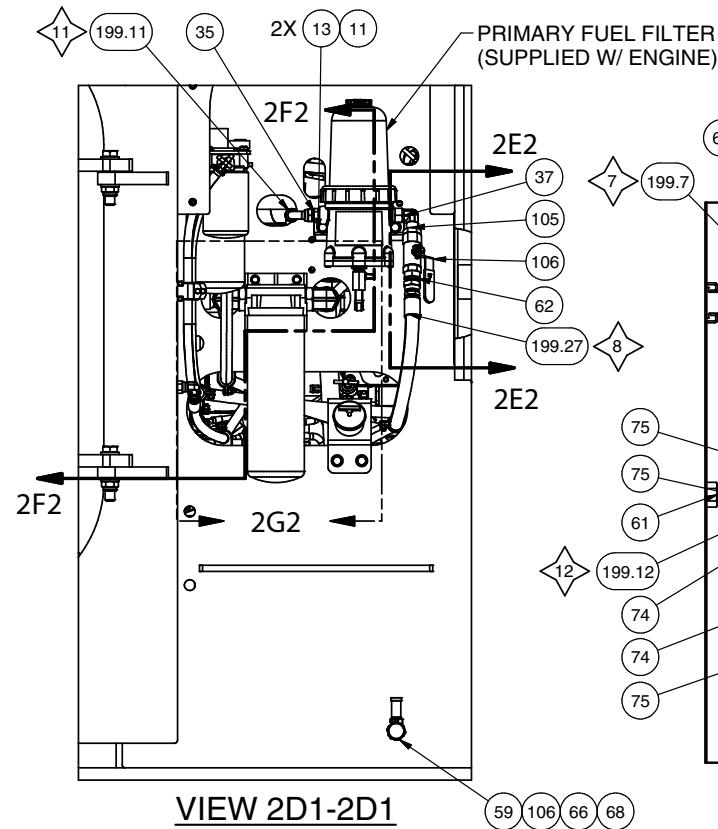
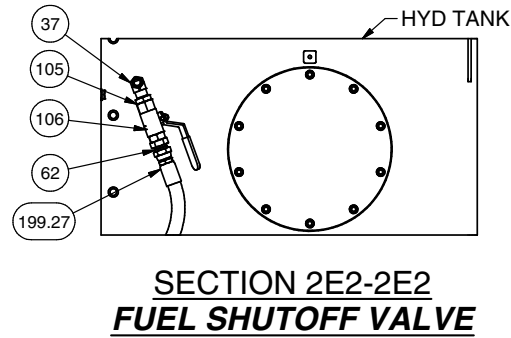
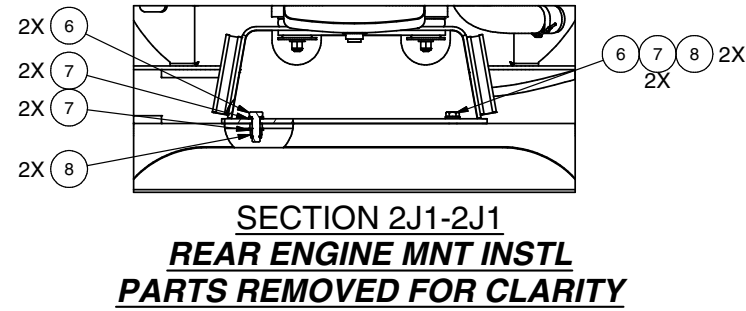
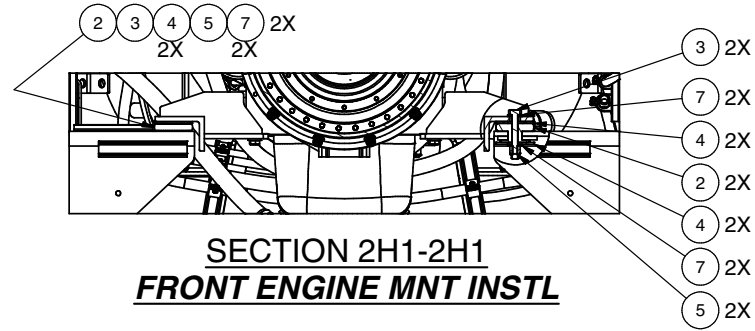

Power Unit Installation

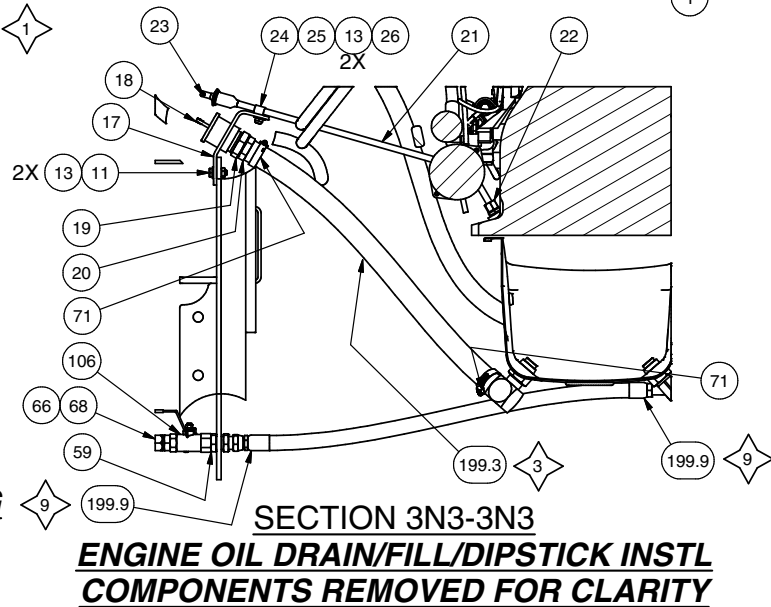
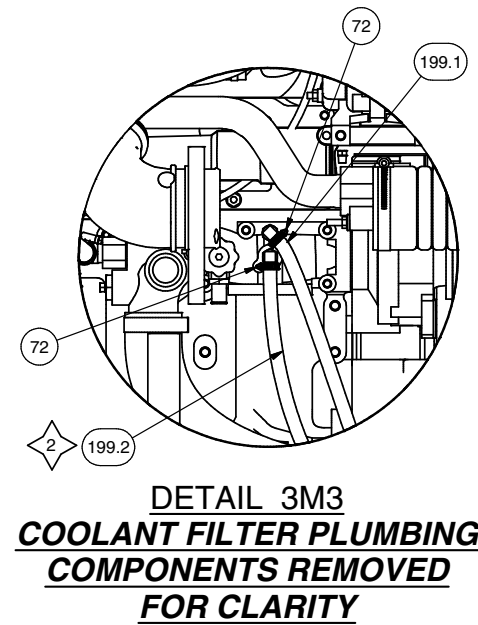
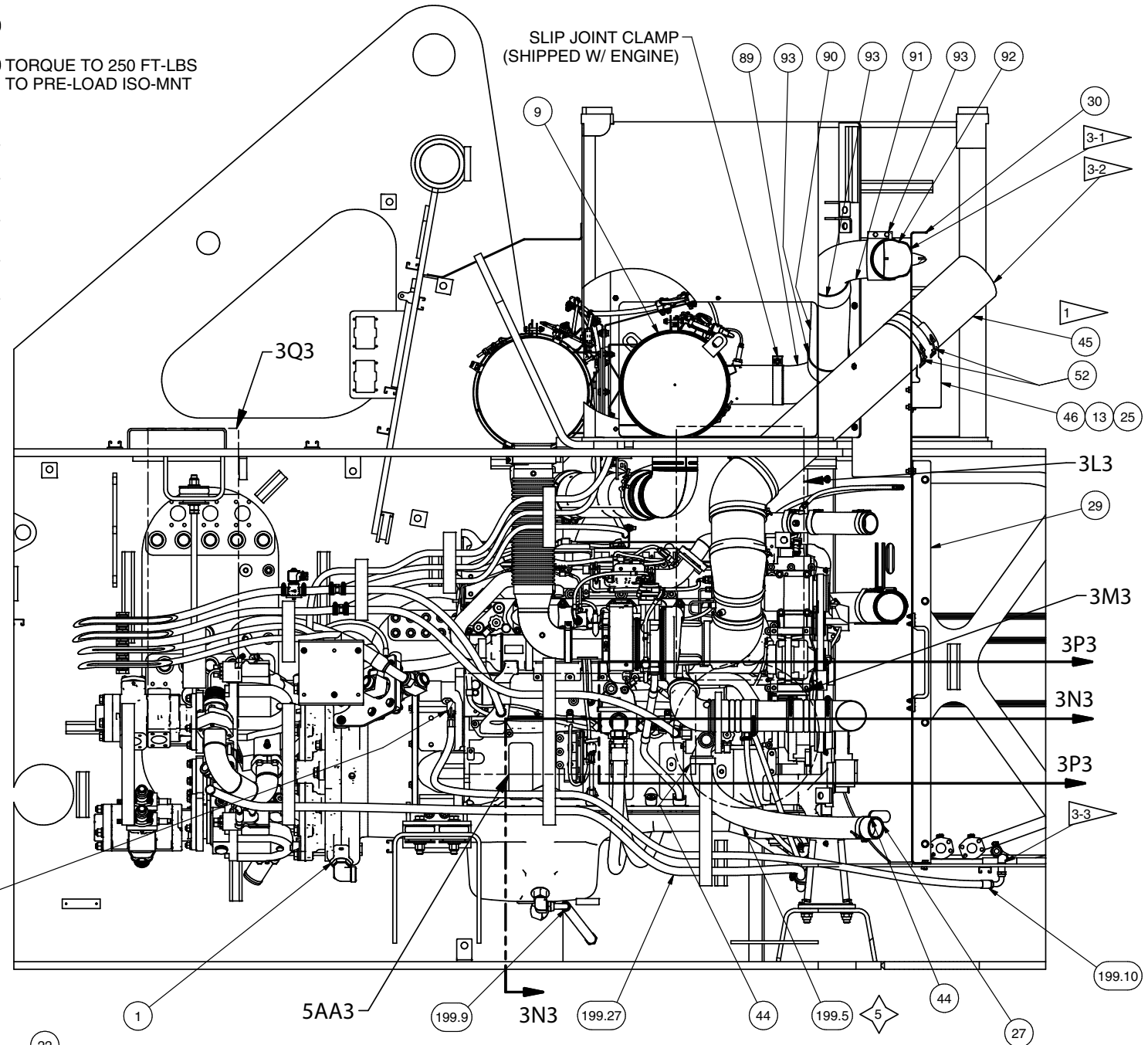
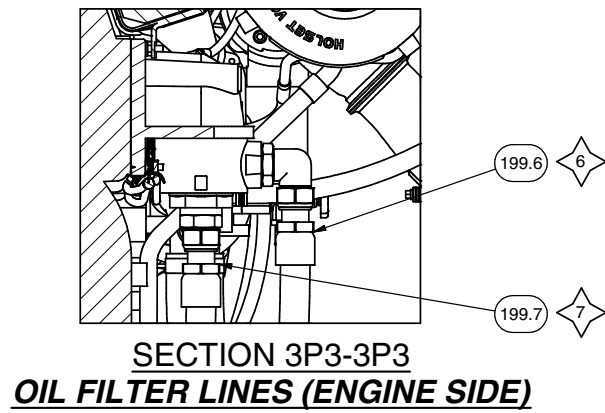
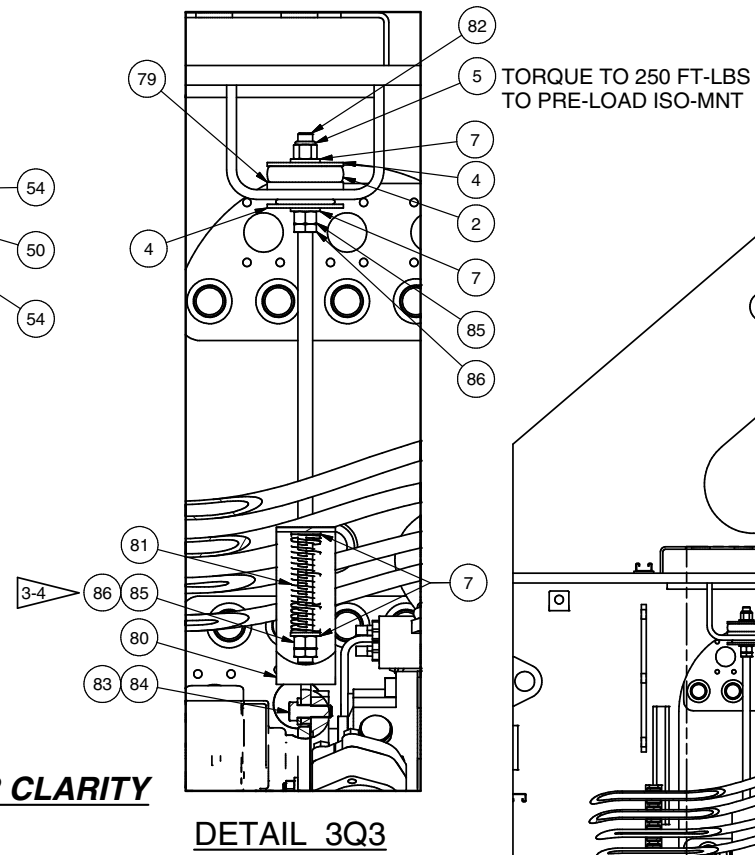
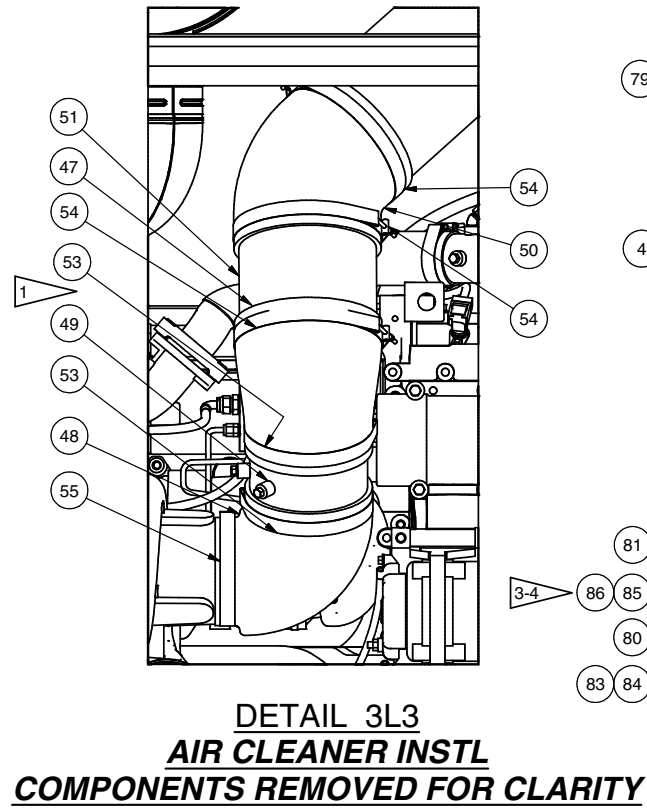
Power Unit Installation

Item	Part No.	Qty	Description	Item	Part No.	Qty	Description
	598948		Power Unit Installation				
1	* 598964	1	. Power Unit Assembly	66	209215	1	. Fitting
2	234497	5	. Vibration Dampener	67	209090	1	. Fitting
3	Y17C-1272	4	. Capscrew	71	206289	2	. Hose Clamp
4	578361	10	. Washer	72	CLP7051171	8	. Mini Worm Drive Clamp
5	R13811196	5	. Locknut	73	201431	10	. Hose Clamp
6	Y19C-M2065	4	. Capscrew	74	238429	6	. Clamp
7	221777W	20	. Washer	75	231296	7	. Clamp
8	302405W	4	. Locknut	76	CLP0100112	5	. Clamp, Hydra-Zorb
9	* 599385	1	. Aftertreatment Sub-Assembly	77	231250	8	. Clamp
10	598216	1	. Mount, Coolant Filter	78	231537	11	. Clamp
11	293629W	20	. Capscrew	79	599486	1	. Plate, Isolator Mount
12	251199	4	. Capscrew	80	599489	1	. Tail Support
13	R13811432	77	. Washer	81	599488	1	. Coil Spring
14	Y17C-0616	4	. Capscrew	82	599487	1	. Rod
15	R13802914	18	. Washer	83	234271	1	. Washer
16	221767W	12	. Washer	84	Y17C-1028	1	. Capscrew
17	598218	1	. Fill Cap Holder	85	221716W	2	. Hex Nut
18	208202	1	. Cap	86	238381	2	. Jam Nut
19	209820	1	. Fitting	87	600314	1	. Exhaust Bellows
20	230464	1	. Hose End	88	600317	2	. Fitting
21	598219	1	. Dipstick Housing	89	599394	1	. Exhaust Elbow
22	599384	1	. Fitting	90	585252	1	. Tube, Flex
23	598221	1	. Dipstick, QSX15	91	216814	1	. Elbow
24	209579	1	. Clip, Insulated	92	589479	1	. Reducer, Exhaust
25	293628W	26	. Capscrew	93	226586	3	. Seal Clamp
26	302401W	29	. Locknut	94	296416W	2	. Washer
27	599724	1	. Bulkhead	95	Y23C-M512	2	. Capscrew
28	598107	1	. Bulkhead	96	R13806526	3	. Capscrew
29	* 598103	1	. Assembly, Panel	97	R13811190	3	. Locknut
30	598105	1	. Panel	98	599757	2	. Bracket
31	R13811210	10	. Capscrew	99	221771W	2	. Washer
32	599729	1	. Tube, CAC	100	293644W	2	. Capscrew
33	599730	1	. Tube, CAC	101	R13808094	6	. Clip, Insulated
34	243488	4	. Connector	102	R13809038	4	. Capscrew
35	209758	1	. Fitting	103	302400W	4	. Locknut
36	243489	8	. Clamp	104	599756	2	. Mount, DEF Tank Strap
37	28971	1	. Fitting	105	592038	1	. Fitting
38	209511	4	. Fitting	106	591648	2	. Ball Valve
39	599754	1	. Plate, Support	107	597395	2	. Strip, Neoprene Bar
40	598222	1	. Tube, Radiator	108	602991	4	. Tab
41	209790	1	. Fitting	199	599759	1	. Kit, Hose
42	23543	2	. Fitting	199.1	592605-110	1	.. Hose, Coolant
43	598214	1	. Hose,	199.2	592605-105	1	.. Hose, Coolant
44	225369	6	. T-Bolt Clamp	199.3	23551-31	1	.. Hose
45	YDHA 8212-44.00	1	. Tube	199.4	592088	1	.. Hose, Radiator
46	598257	1	. Mount, Air Intake	199.5	211791-30	1	.. Hose, Radiator
47	228425	1	. Elbow	199.6	603680	1	.. Hose Assembly
48	588143	1	. Elbow	199.7	603681	1	.. Hose Assembly
49	593765	1	. Tube	199.9	598246	1	.. Hose Assembly, Fuel
50	224226	1	. Elbow	199.10	598250	1	.. Hose Assembly, Fuel
51	YDHA 8212-7.00	1	. Tube	199.11	599761	1	.. Hose Assembly, Fuel
52	216609	2	. T-Bolt Clamp	199.12	599758	1	.. Hose Assembly, Fuel
53	207245	2	. T-Bolt Clamp	199.13	209670	1	.. Hose Assembly
54	224199	3	. T-Bolt Clamp	199.15	589398	1	.. Hose Assembly
55	202259	1	. T-Bolt Clamp	199.16	592605-90	1	.. Hose, Coolant
56	216494	1	. T-Bolt Clamp	199.17	592605-96	1	.. Hose, Coolant
59	592029	1	. Fitting	199.18	259356-36	1	.. Hose, Heater
60	598178	2	. Fitting	199.19	259356-56	2	.. Hose, Heater
61	210769	1	. Fitting	199.20	259356-6	1	.. Hose, Heater
62	2510143	2	. Fitting	199.21	259356-60	1	.. Hose, Heater
63	2514292	1	. Fitting	199.27	599760	1	.. Hose Assembly, Fuel

* See Separate Coverage

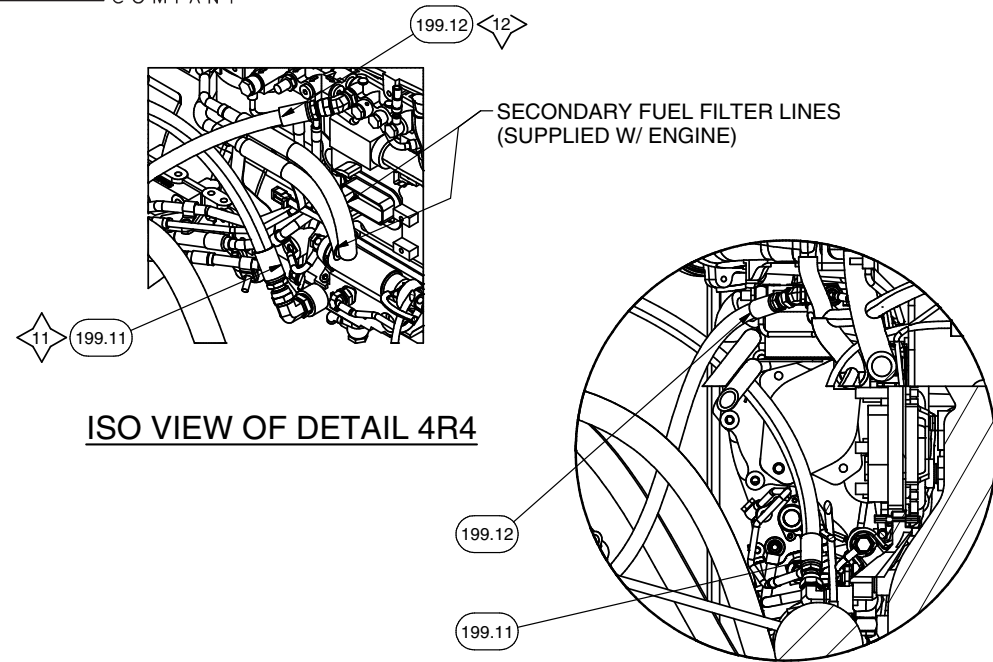






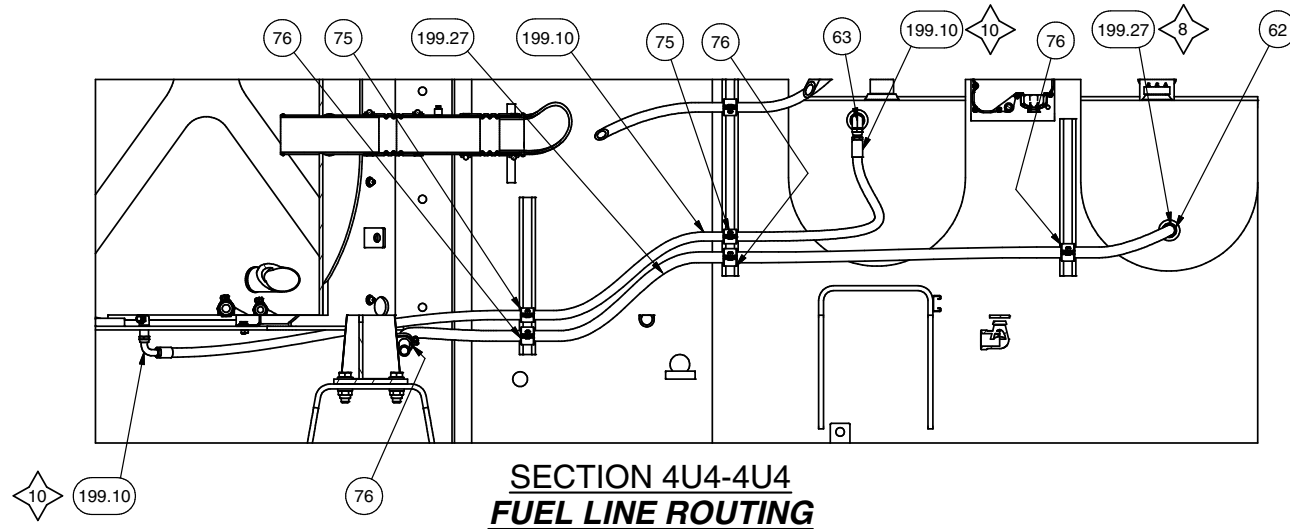
**SECTION 3K1-3K1
COMPONENTS REMOVED FOR CLARITY**

- NOTES:**
- 3-1 EXHAUST ROUTING CONTINUED ON EXHAUST INSTALLATION.
 - 3-2 AIR INTAKE ROUTING CONTINUED ON AIR INTAKE INSTALLATION.
 - 3-3 FUEL LINE ROUTING CONTINUED ON COOLING PACKAGE INSTALLATION.
 - 3-4 AFTER PRE-LOADING ISO-MOUNT, TIGHTEN ITEM 84 (NUT) UNTIL ITEM 80 (SPRING) COMPRESSES 1.00" (SPRING COMPRESSED LENGTH OF 4.00"). THIS WILL APPLY APPROXIMATELY 210 LBS OF UPWARD SUPPORT ON THE REAR FLANGE OF HYDRAULIC PUMP FLANGE.

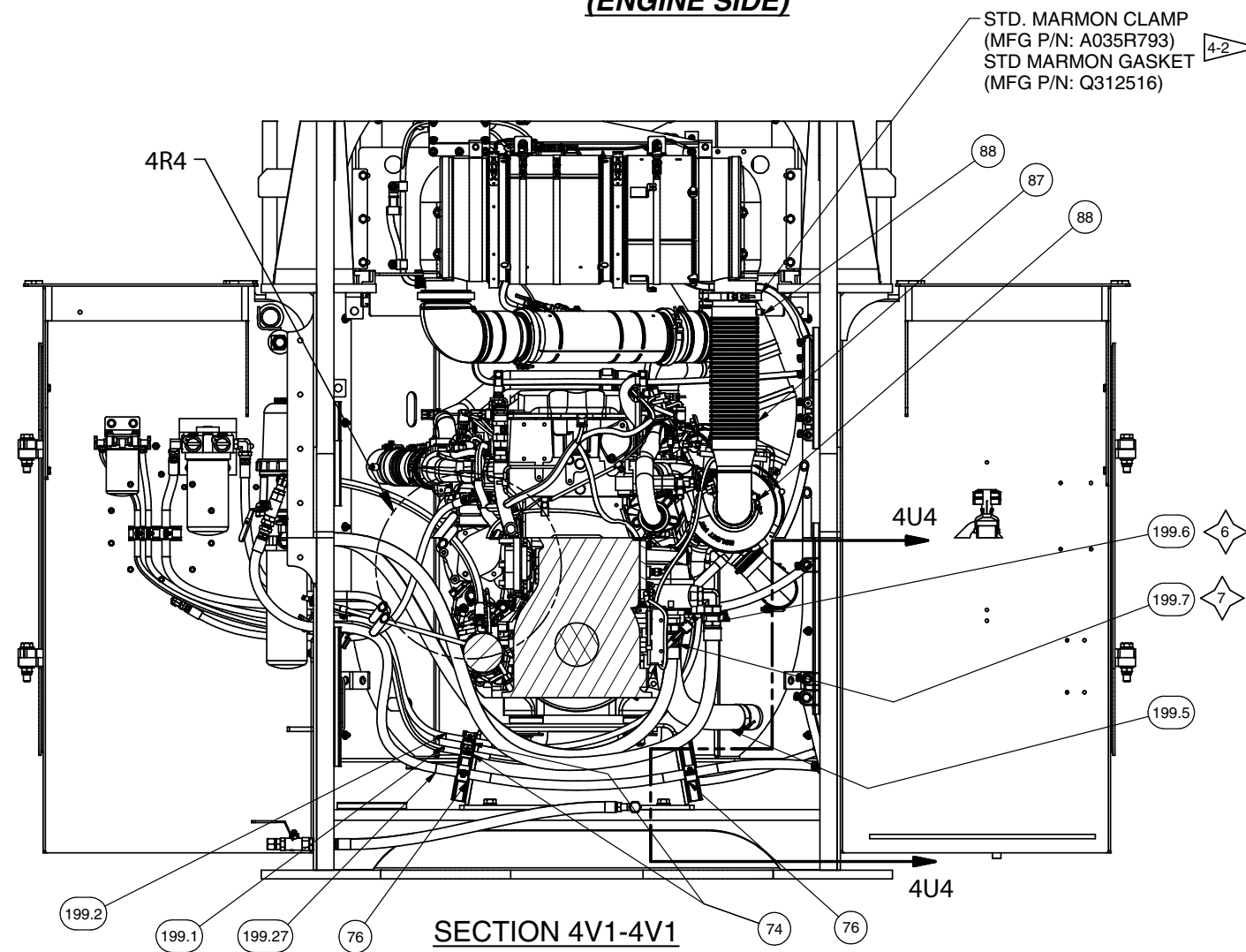


ISO VIEW OF DETAIL 4R4

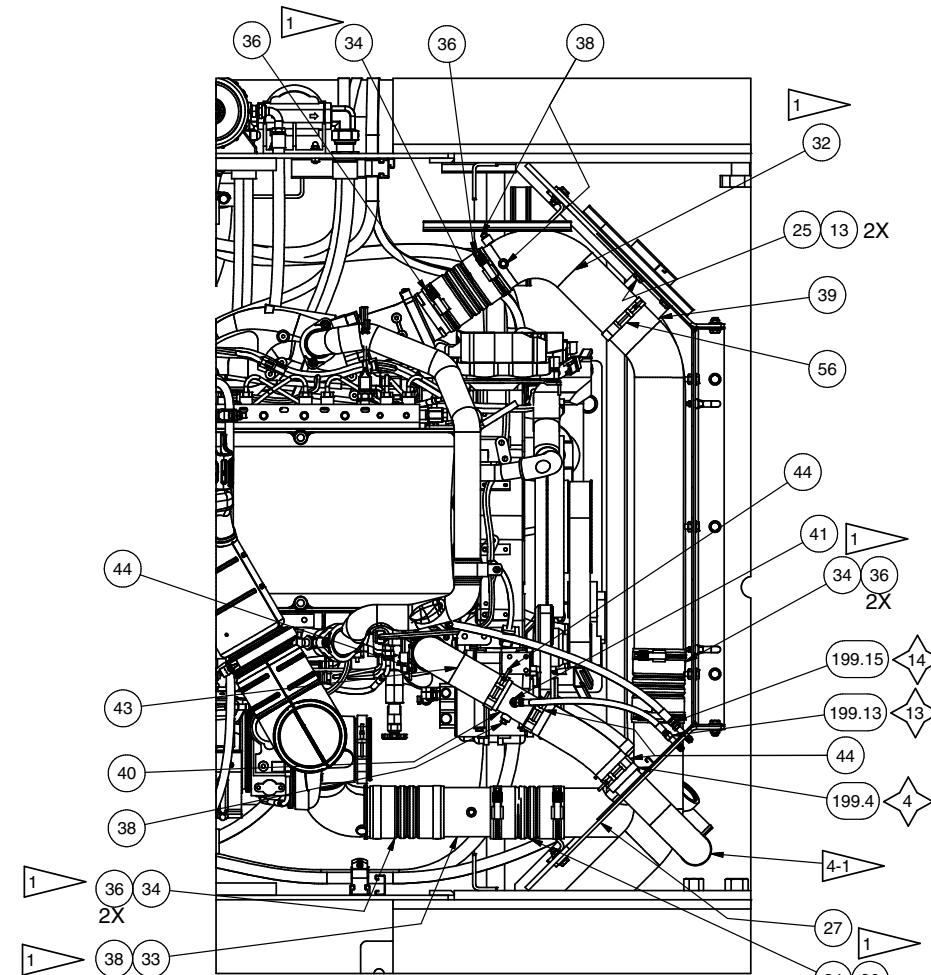
**DETAIL 4R4
FUEL FILTER PLUMBING
(ENGINE SIDE)**



**SECTION 4U4-4U4
FUEL LINE ROUTING**



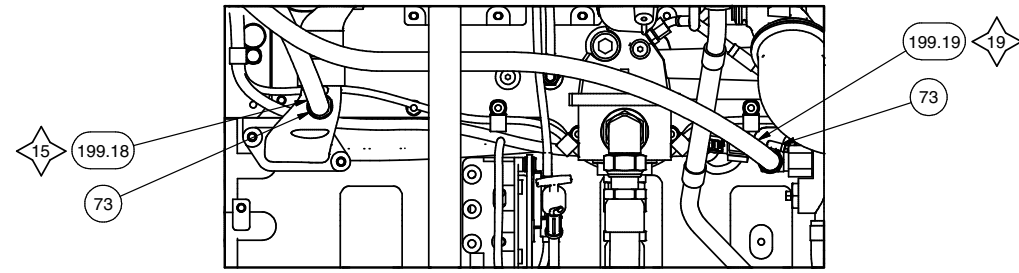
**SECTION 4V1-4V1
PLUMBING INSTL
ITEMS REMOVED FOR CLARITY**



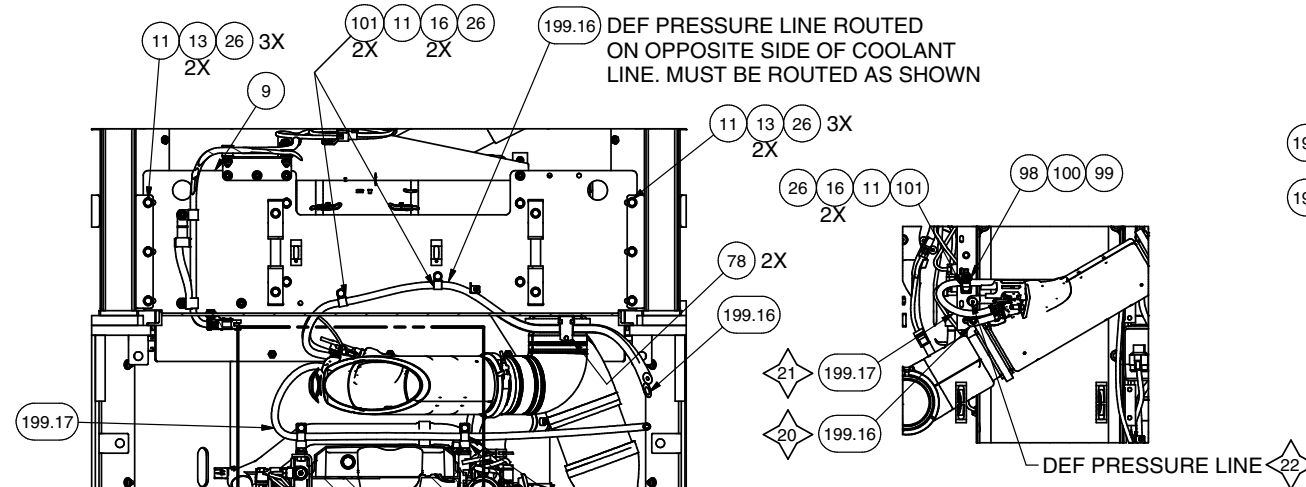
**SECTION 4T1-4T1
CAC PLUMBING & JACKET WATER (HOT) INSTL
COMPONENTS REMOVED FOR CLARITY**

NOTES:

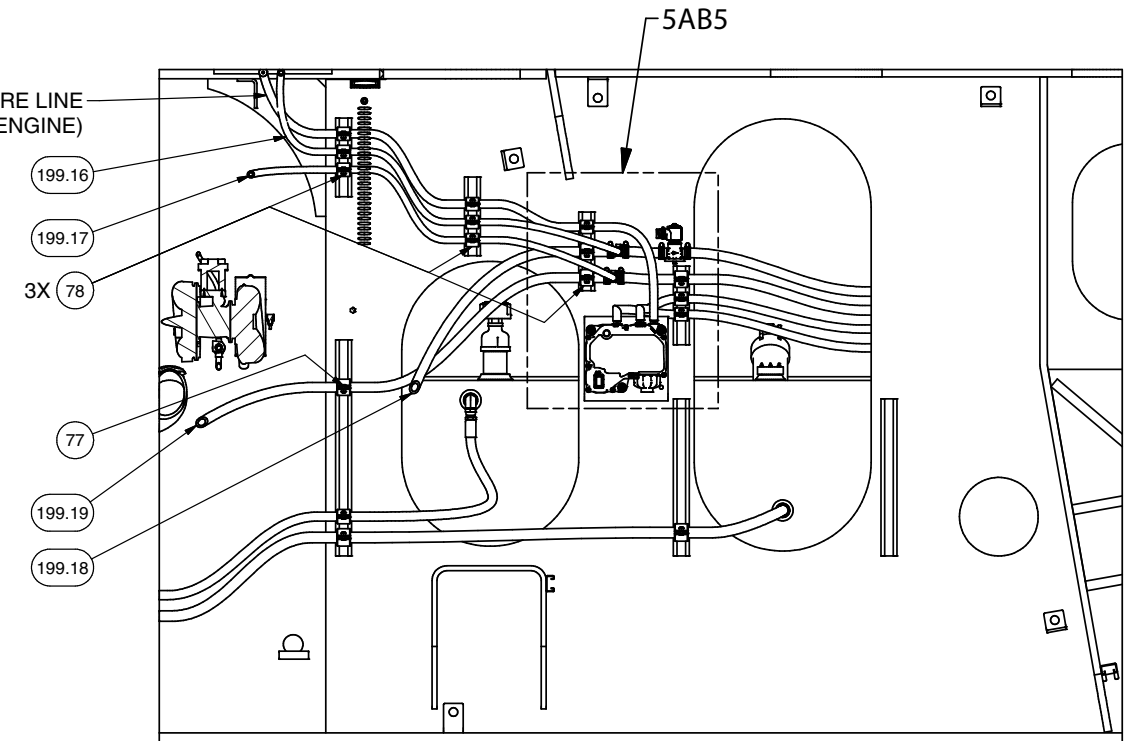
- 4-1 CAC AND JACKET WATER ROUTING CONTINUED ON COOLING PACKAGE INSTALLATION.
- 4-2 CLAMP AND GASKET SUPPLIED WITH ENGINE. REFERENCE DWG 596989 FOR INFORMATION. TORQUE CLAMP TO 13.5 +/- 1.5 Nm. (AEB 24.75)



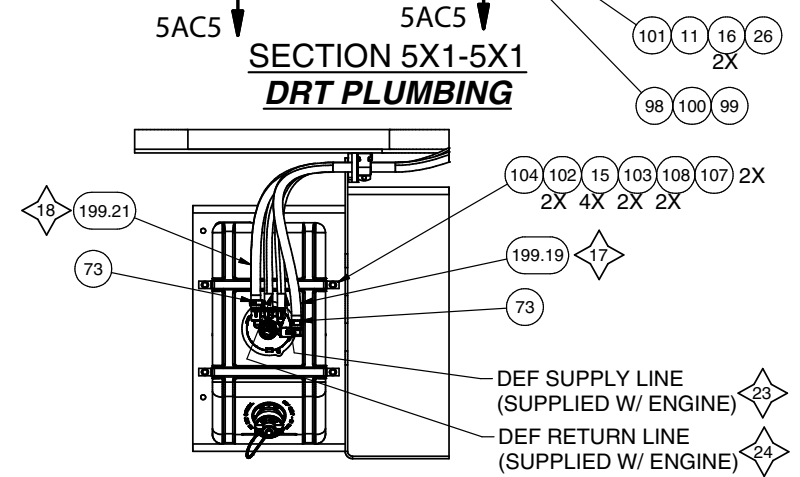
DETAIL 5AA3
DEF COOLANT ENGINE CONNECTIONS



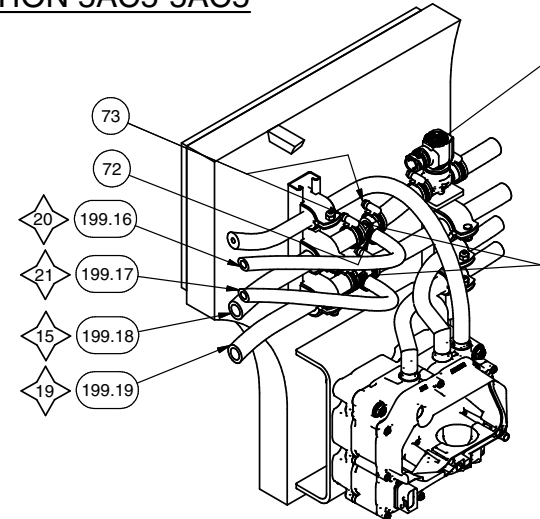
SECTION 5AC5-5AC5



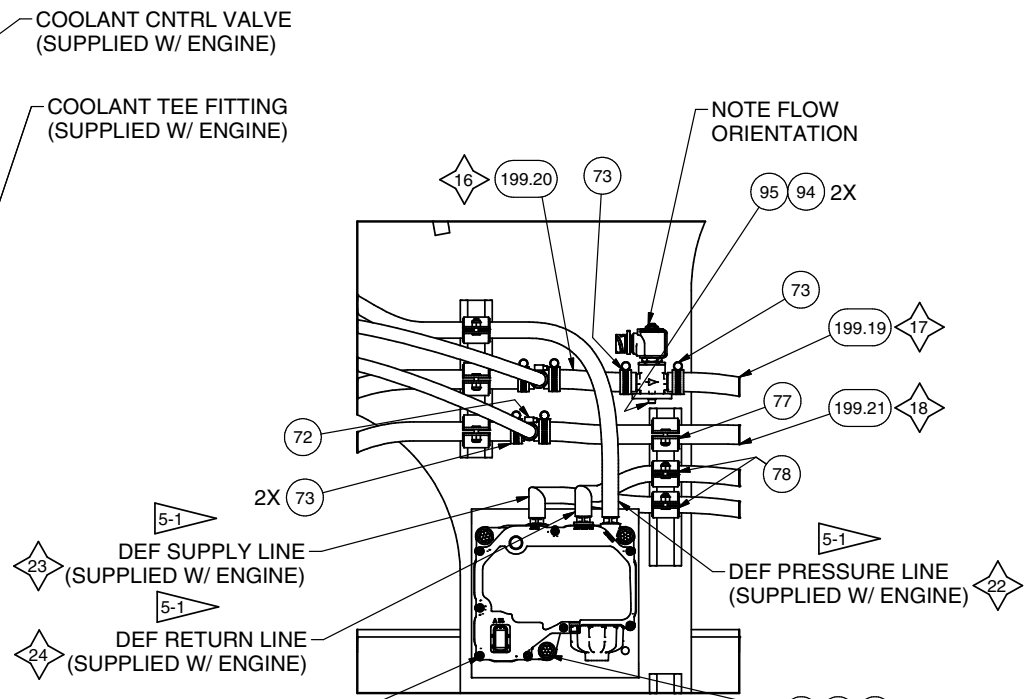
SECTION 5W1-5W1
DEF/COOLANT LINE PLUMBING



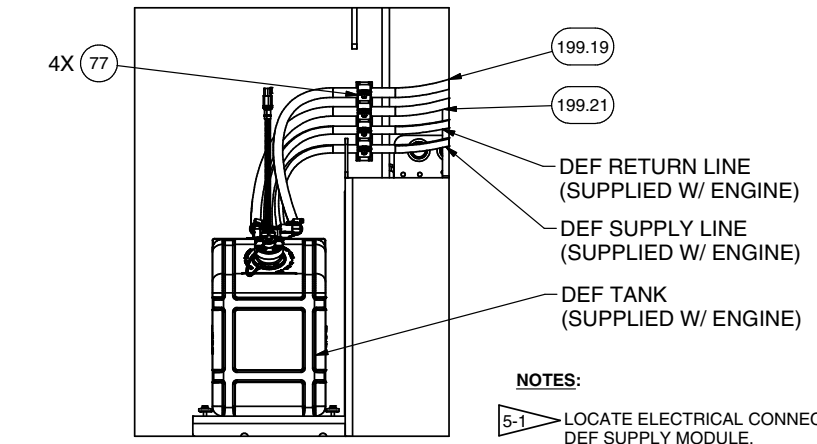
SECTION 5X1-5X1
DRT PLUMBING



ISO VIEW DETAIL 5AB5

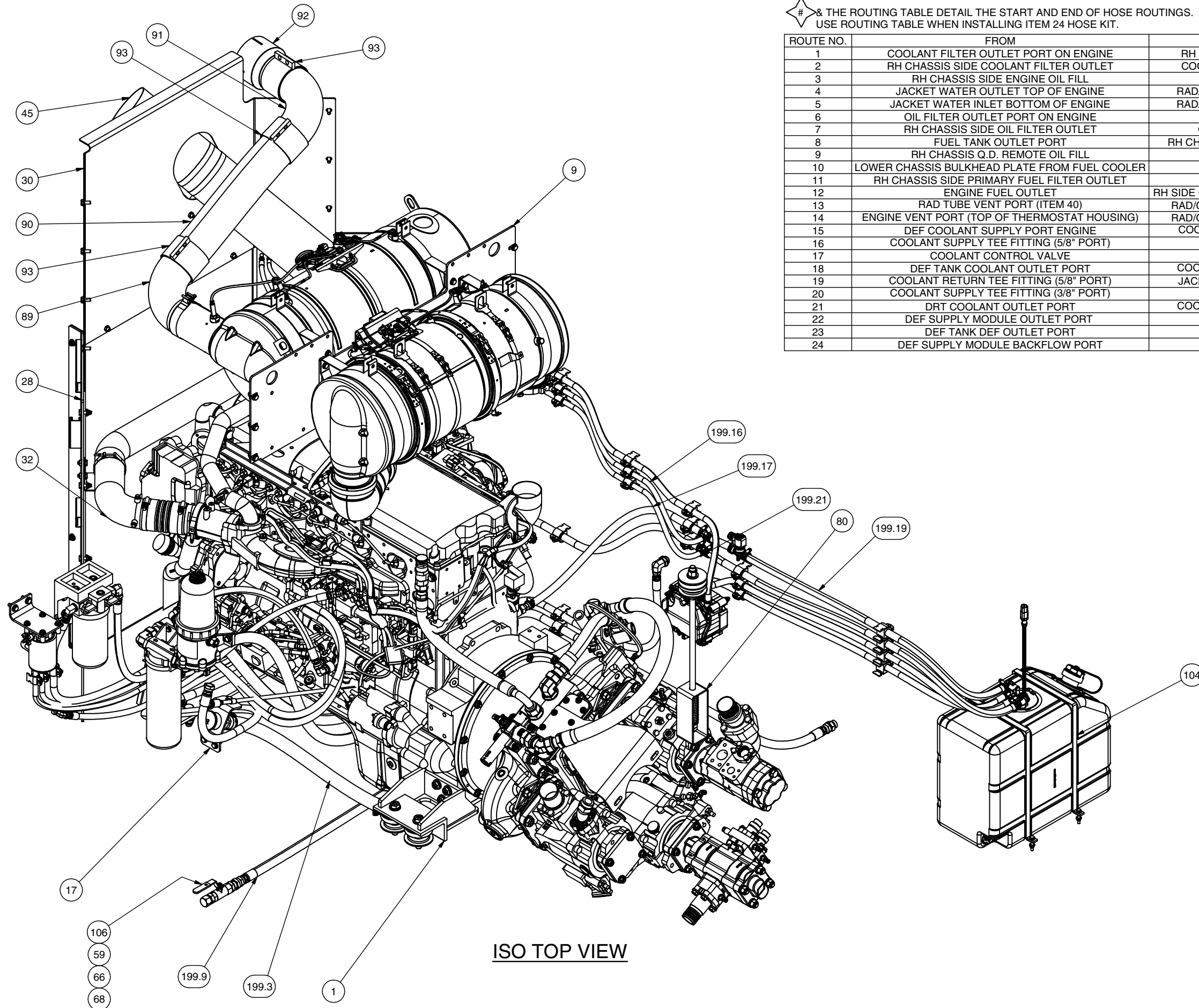


DETAIL 5AB5
DEF SUPPLY MODULE INSTL



VIEW 5Z1-5Z1
DEF TANK INSTL/PLUMBING

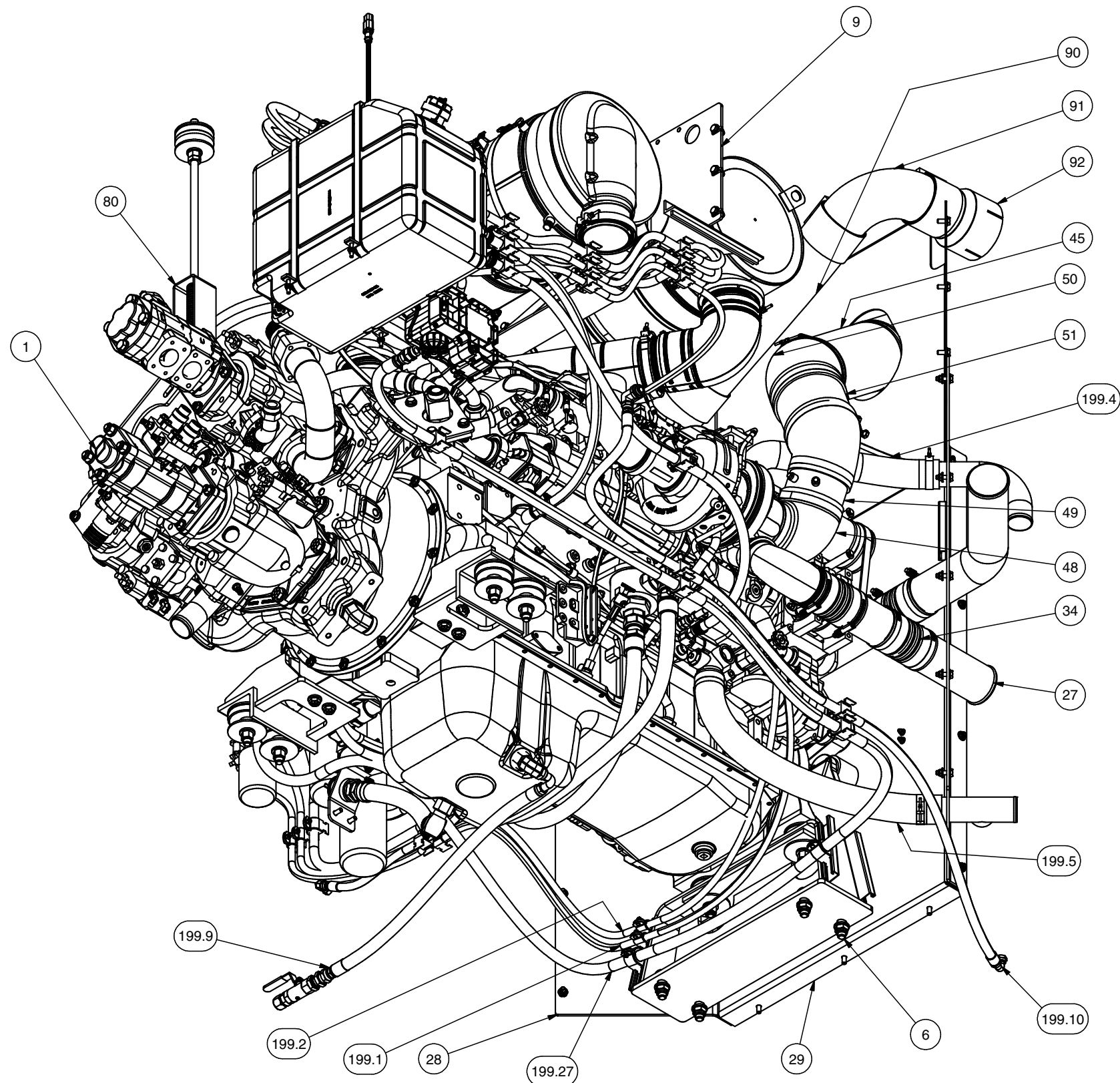
NOTES:
5-1 LOCATE ELECTRICAL CONNECTION END OF DEF LINES CLOSEST TO THE DEF SUPPLY MODULE.



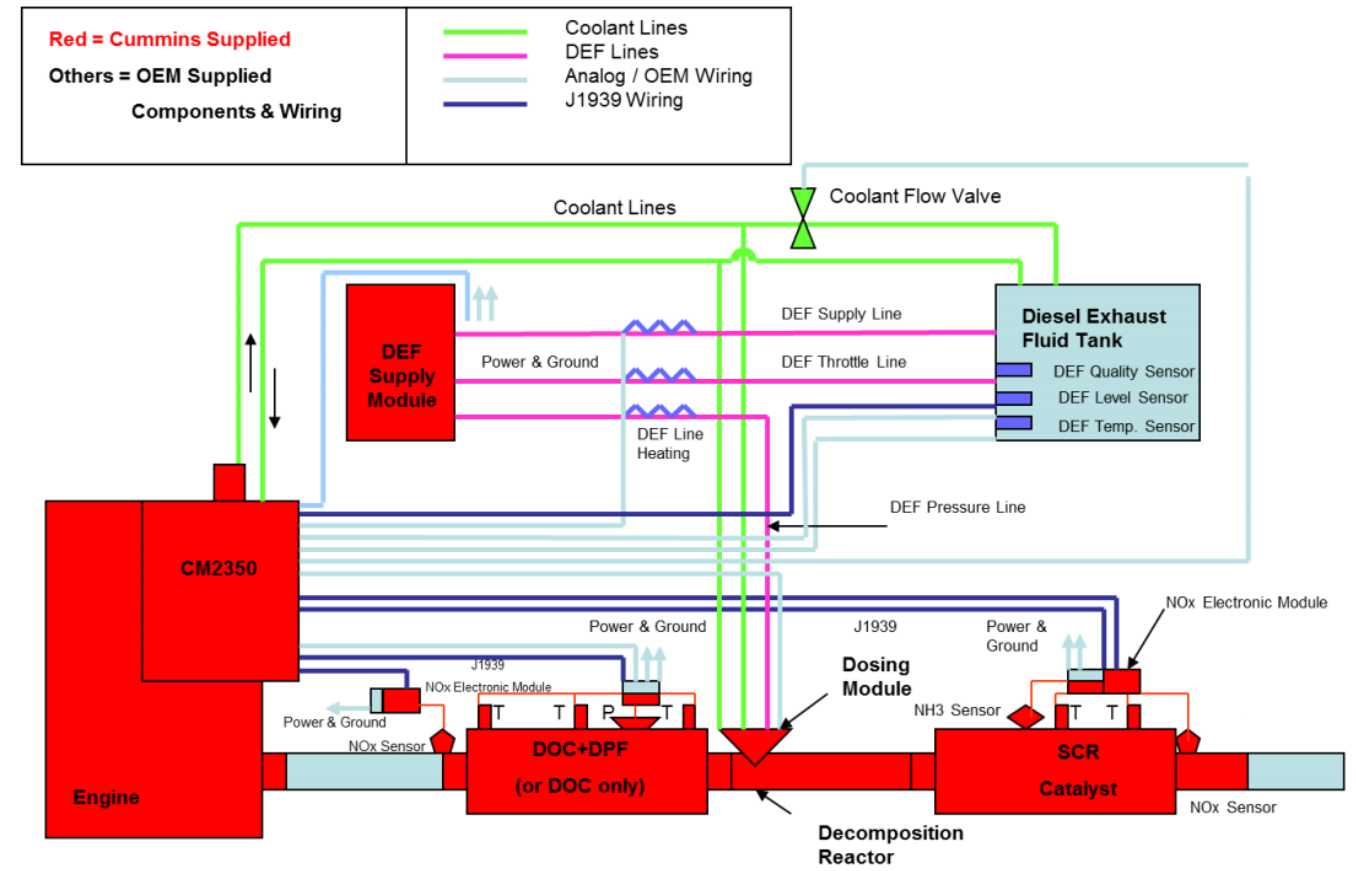
& THE ROUTING TABLE DETAIL THE START AND END OF HOSE ROUTINGS.
USE ROUTING TABLE WHEN INSTALLING ITEM 24 HOSE KIT.

ROUTE NO.	FROM	TO
1	COOLANT FILTER OUTLET PORT ON ENGINE	RH CHASSIS SIDE COOLANT FILTER INLET
2	RH CHASSIS SIDE COOLANT FILTER OUTLET	COOLANT FILTER INLET PORT ON ENGINE
3	RH CHASSIS SIDE ENGINE OIL FILL	ENGINE OIL PAN
4	JACKET WATER OUTLET TOP OF ENGINE	RAD/CAC BULKHEAD WELDMENT RAD TUBE
5	JACKET WATER INLET BOTTOM OF ENGINE	RAD/CAC BULKHEAD WELDMENT RAD TUBE
6	OIL FILTER OUTLET PORT ON ENGINE	RH CHASSIS SIDE OIL FILTER INLET
7	RH CHASSIS SIDE OIL FILTER OUTLET	OIL FILTER INLET PORT ON ENGINE
8	FUEL TANK OUTLET PORT	RH CHASSIS SIDE PRIMARY FUEL FILTER INLET
9	RH CHASSIS Q.D. REMOTE OIL FILL	ENGINE OIL PAN
10	LOWER CHASSIS BULKHEAD PLATE FROM FUEL COOLER	FUEL TANK INLET PORT
11	RH CHASSIS SIDE PRIMARY FUEL FILTER OUTLET	ENGINE FUEL INLET
12	ENGINE FUEL OUTLET	RH SIDE COOLING BOX BULKHEAD TO FUEL COOLER
13	RAD TUBE VENT PORT (ITEM 40)	RAD/CAC BULKHEAD WLDMT TO SURGE TANK
14	ENGINE VENT PORT (TOP OF THERMOSTAT HOUSING)	RAD/CAC BULKHEAD WLDMT TO SURGE TANK
15	DEF COOLANT SUPPLY PORT ENGINE	COOLANT SUPPLY TEE FITTING (5/8" PORT)
16	COOLANT SUPPLY TEE FITTING (5/8" PORT)	COOLANT CONTROL VALVE
17	COOLANT CONTROL VALVE	DEF TANK COOLANT INLET PORT
18	DEF TANK COOLANT OUTLET PORT	COOLANT RETURN TEE FITTING (5/8" PORT)
19	COOLANT RETURN TEE FITTING (5/8" PORT)	JACKET WATER INLET BOTTOM OF ENGINE
20	COOLANT SUPPLY TEE FITTING (3/8" PORT)	DRT COOLANT INLET PORT
21	DRT COOLANT OUTLET PORT	COOLANT RETURN TEE FITTING (3/8" PORT)
22	DEF SUPPLY MODULE OUTLET PORT	DRT DEF INLET PORT
23	DEF TANK DEF OUTLET PORT	DEF SUPPLY MODULE INLET PORT
24	DEF SUPPLY MODULE BACKFLOW PORT	DEF TANK DEF RETURN PORT

ISO TOP VIEW



ISO BOTTOM VIEW



DEF SYSTEM SCHEMATIC