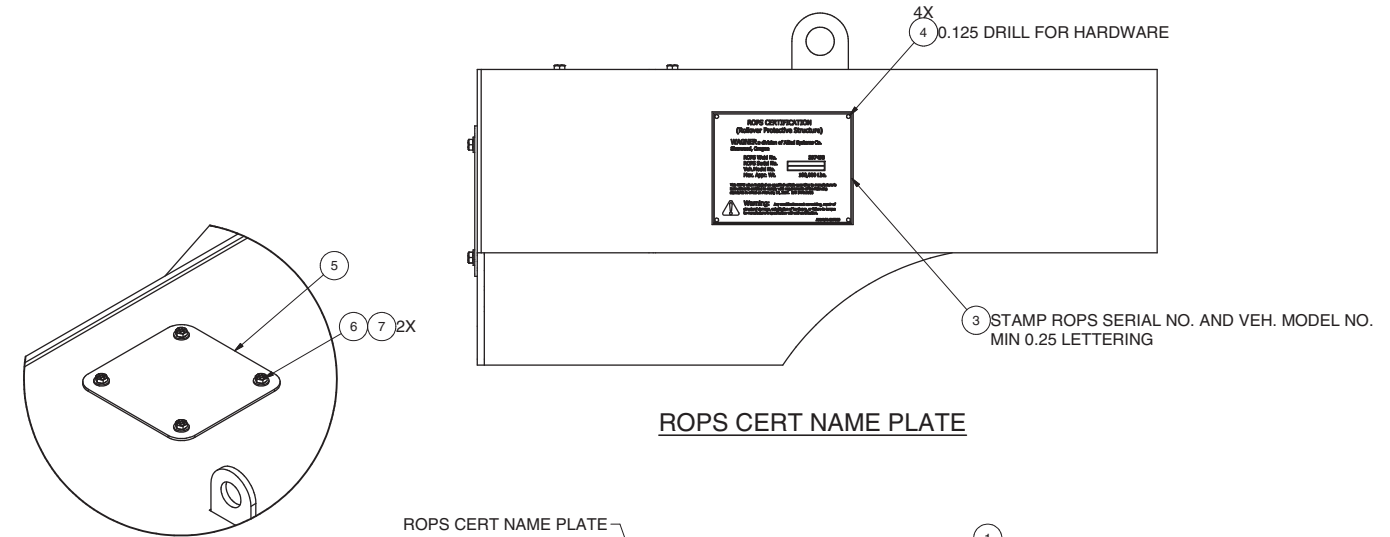
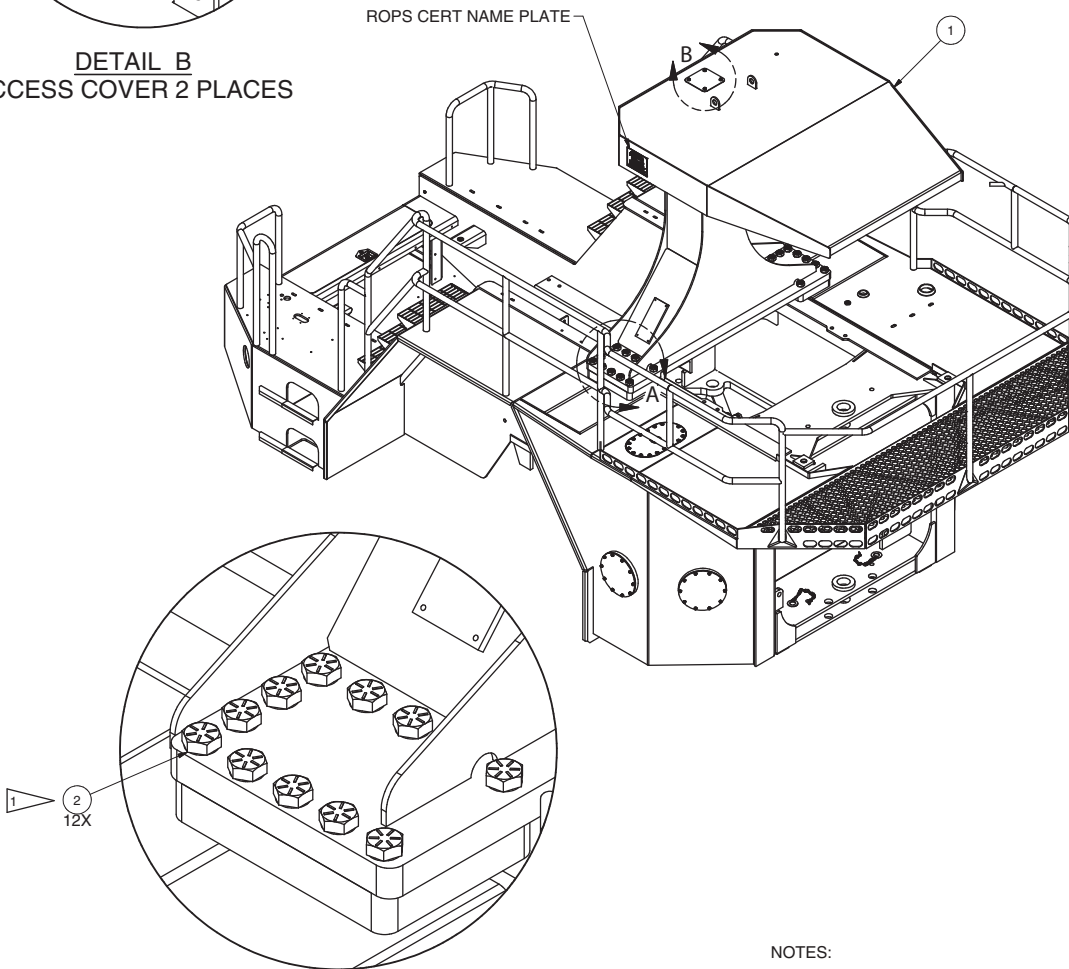


ROPS Installation



ROPS CERT NAME PLATE

DETAIL B
ACCESS COVER 2 PLACES



DETAIL A
SOME PARTS REMOVED FOR CLARITY
BOTH SIDES

NOTES:

1 TORQUE TO 1400 FT-LBS LUBRICATED
(DO NOT USE NEVER SEIZE)

Item	Part No.	Qty	Description
	597037		ROPS Installation
1	597498	1	. ROPS Structure
2	166396W	24	. Capscrew
3	597515	1	. Nameplate, ROPS Cert
4	237034	4	. Screw, Drive
5	597516		
6	Y17C-0616		
7	221767W		
8			. Plate, ROPS
			. Capscrew
			. Hard Washer