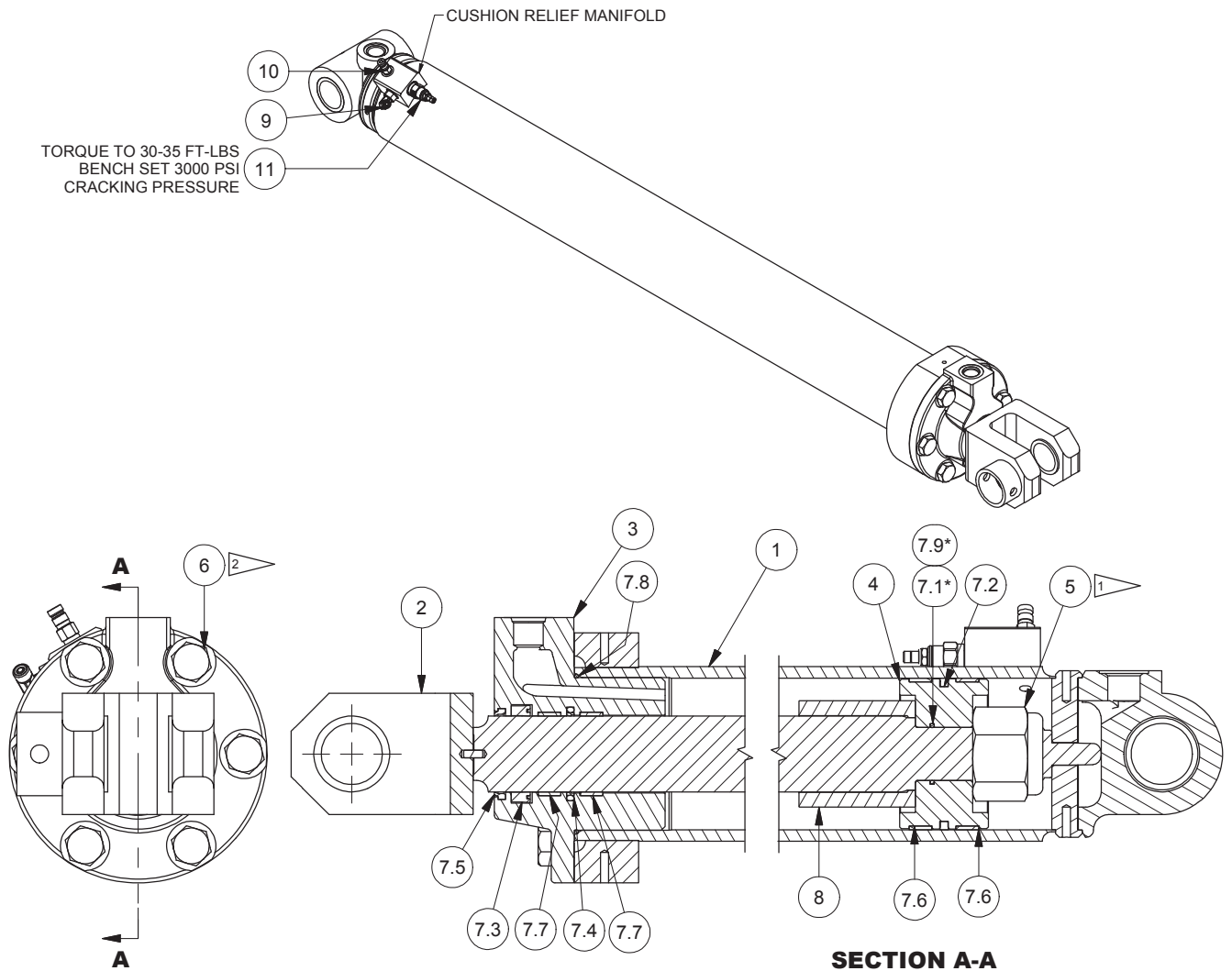


Cylinder Assembly, Steering



- NOTES:**
- 1 TORQUE NUT TO 1400 FT-LBS
  - 2 REMOVE DIRT, LOOSE SCALE, BURRS, AND PAINT FROM MATING SURFACES OF BOLTED JOINTS. USE MEDIUM STRENGTH LOCTITE THREADLOCKER 242 (BLUE)
- \* USE 7.1 OR 7.9, DISCARD UNUSED SEAL

Item	Part No.	Qty	Description	Item	Part No.	Qty	Description
	<b>596098</b>		<b>Cylinder Assembly, Steering</b>				
1	596103	1	. Cylinder Barrel	7.4	69768.0250	1	.. Seal, Buffer
	505880	2	.. Bushing	7.5	20545	1	.. Wiper Ring
2	596104	1	. Stem & Eye Assembly	7.6	70384.0500	2	.. Wear Ring, Piston
	505880	2	.. Bushing	7.7	70385.0250	2	.. Wear Ring, Rod
3	591505	1	. Gland, Packing	7.8	233126	1	.. O-Ring
4	596124	1	. Piston, Cylinder	7.9	59229W	1	.. O-Ring
5	219929	1	. Nut, Esna	8	596108	1	. Spacer
6	293708W	6	. Capscrew	9	N/A	-	. Fitting
7	595585	1	. Kit, Packing	10	N/A	-	. Coupler, Q.D. Male
7.1	203515	1	.. O-Ring	11	N/A	-	. Cartridge, Relief Valve
7.2	593457	1	.. Seal, Piston				
7.3	251514	1	.. Seal				

N/A Not Applicable