

---

Fire Suppression System, Chassis

## Fire Suppression System, Chassis

Item	Part No.	Qty	Description	Item	Part No.	Qty	Description
	<b>596092</b>		<b>Fire Suppression System - Chassis</b>				
1	-----	1	. Tank, LVS-30	87	596370	2	. Fitting
2	-----	6	. Chemical, Fire Suppr	88	595241	1	. Bracket
3	-----	1	. Manifold Block	89	595376	1	. Elbow, Pipe
4	-----	20	. Kit, Nozzle	90	596724	1	. Valve, Cartridge
5	-----	1	. Actuator	91	594358	1	. Valve, Cartridge
6	-----	1	. Cartridge, Nitrogen	92	209578	2	. Clamp
7	R13801764	1	. Fitting	93	209481	1	. Fitting
9	-----	30	. Lockwasher	94	-----	1	. Connector, Tee
10	249732	50	. Elbow, Pipe	95	R13801359	1	. Clip, Insul
11	209633	30	. Fitting	96	-----	1	. Cable, Detection
13	209161	51	. Fitting	97	595326	37	. Mount, Tack
14	-----	1	. Relief Valve	98	249329	48	. Cable Tie, Double Loop
15	R13811191	16	. Locknut	99	-----	1	. Cable, Release
16	249733	16	. Tee, Pipe	100	-----	1	. Cable, Display
17	209759	2	. Fitting	101	-----	36	. Sleeve, Rubber
18	239083	1	. Grommet	102	-----	1	. Cable, Detection
20	209588	4	. Clip, Insul	103	-----	1	. Cable, Linear Detector
22	209752	2	. Fitting	104	-----	2	. Connector, Eol Dvce
25	221767W	17	. Hard Washer	105	587019	10'	. Loom, Wire
45	R13803047	14	. Clip, Insul	106	590087	2RL	. Tape
46	R13808116	2	. Clip, Insul	107	Y27E-14	6	. Washer
49	225871	4'	. Trim, Edge	108	-----	0	. Cap, Blow-Off
50	221763W	14	. Washer	109	221499W	1	. Capscrew
51	R13810999	2	. Capscrew	110	-----	1	. Assembly, Cable
61	231296	2	. Clamp	111	-----	1	. Cable, Linear Detector
62	221771W	6	. Washer	112	SHM2406700	1	. Shim, Brg
63	221560W	6	. Capscrew	113	210299	1	. Air Cleaner
64	R13812516	6	. Lockwasher	114	209405	1	. Fitting
69	221314	2	. Stud, Weld	199	596386	1	. Kit, Hose
70	YHGB 06	5'	. Hose Guard, Plastic Spiral	199.1	254279	1	. . Hose Assembly
71	209901	1	. Fitting	199.2	589510	1	. . Hose Assembly
72	250352	1	. Elbow, Pipe	199.3	243223	2	. . Hose Assembly
73	-----	1	. Control Module, Interface	199.4	589508	1	. . Hose Assembly
74	-----	1	. Actuator	199.5	589506	4	. . Hose Assembly
75	73969	1	. Cable Tie	199.6	588272	1	. . Hose Assembly
76	594346	1	. Weldment, Actuator	199.7	589511	1	. . Hose Assembly
77	-----	1	. Battery	199.8	589507	1	. . Hose Assembly
78	-----	1	. Connector, Tee	199.9	258556	2	. . Hose Assembly
79	-----	2	. Cable, Drop	199.10	586953	1	. . Hose Assembly
80	-----	2	. Actuation Device, Protracting	199.11	591477	1	. . Hose Assembly
81	-----	1	. . Fused Power Circuit Cable	199.12	595001	1	. . Hose Assembly
82	-----	1	. Cable Assembly, Relay Circuit	199.13	596390	1	. . Hose Assembly
84	R13811189	8	. Locknut				
85	R13810993	4	. Capscrew				
86	221280	2	. Fitting				

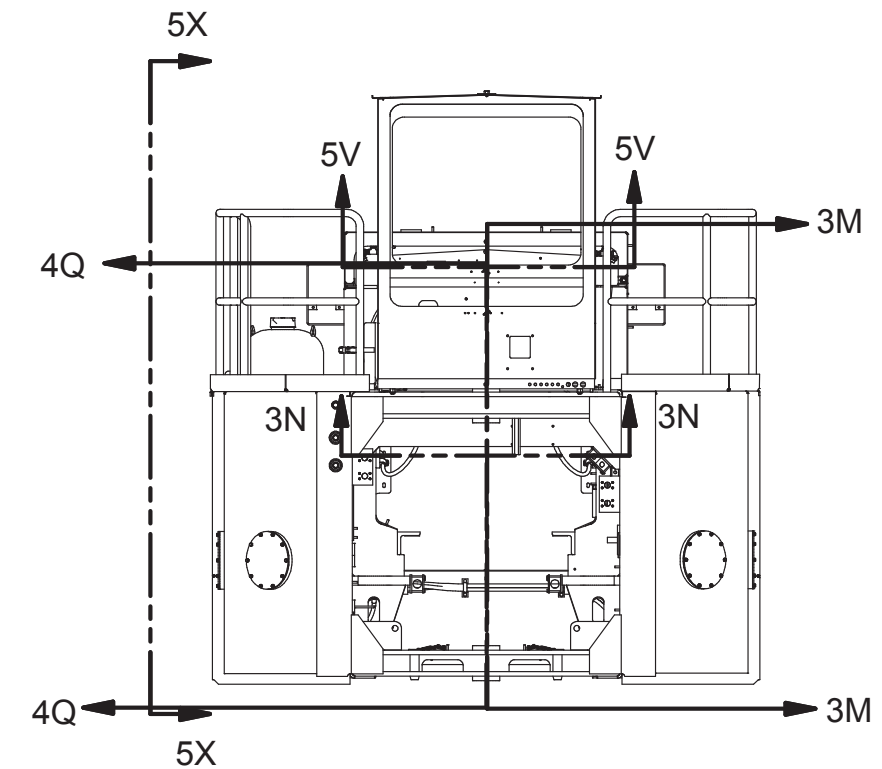
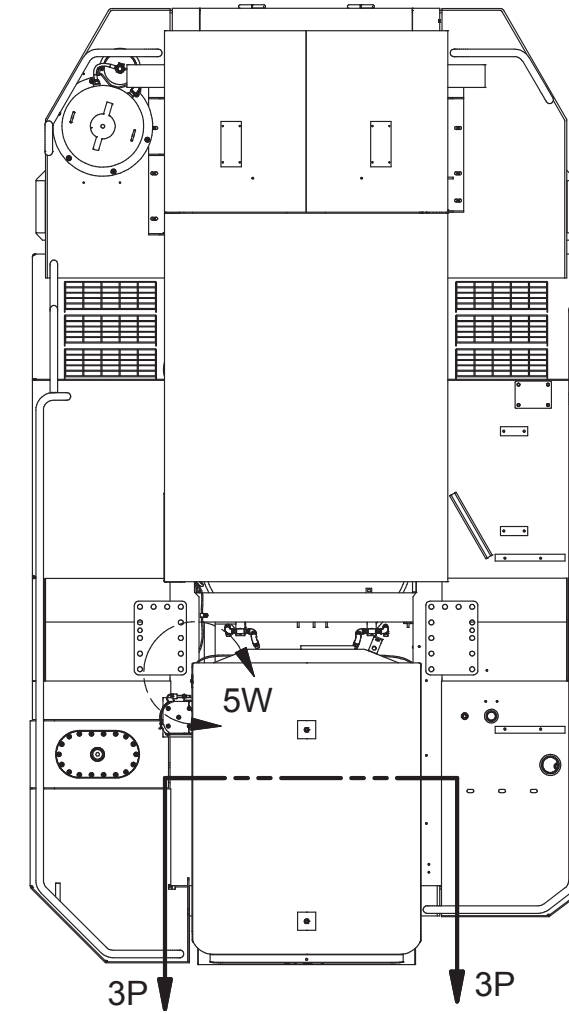
Fire Suppression System should be serviced  
by an authorized ANSUL service technician.

NOTES:

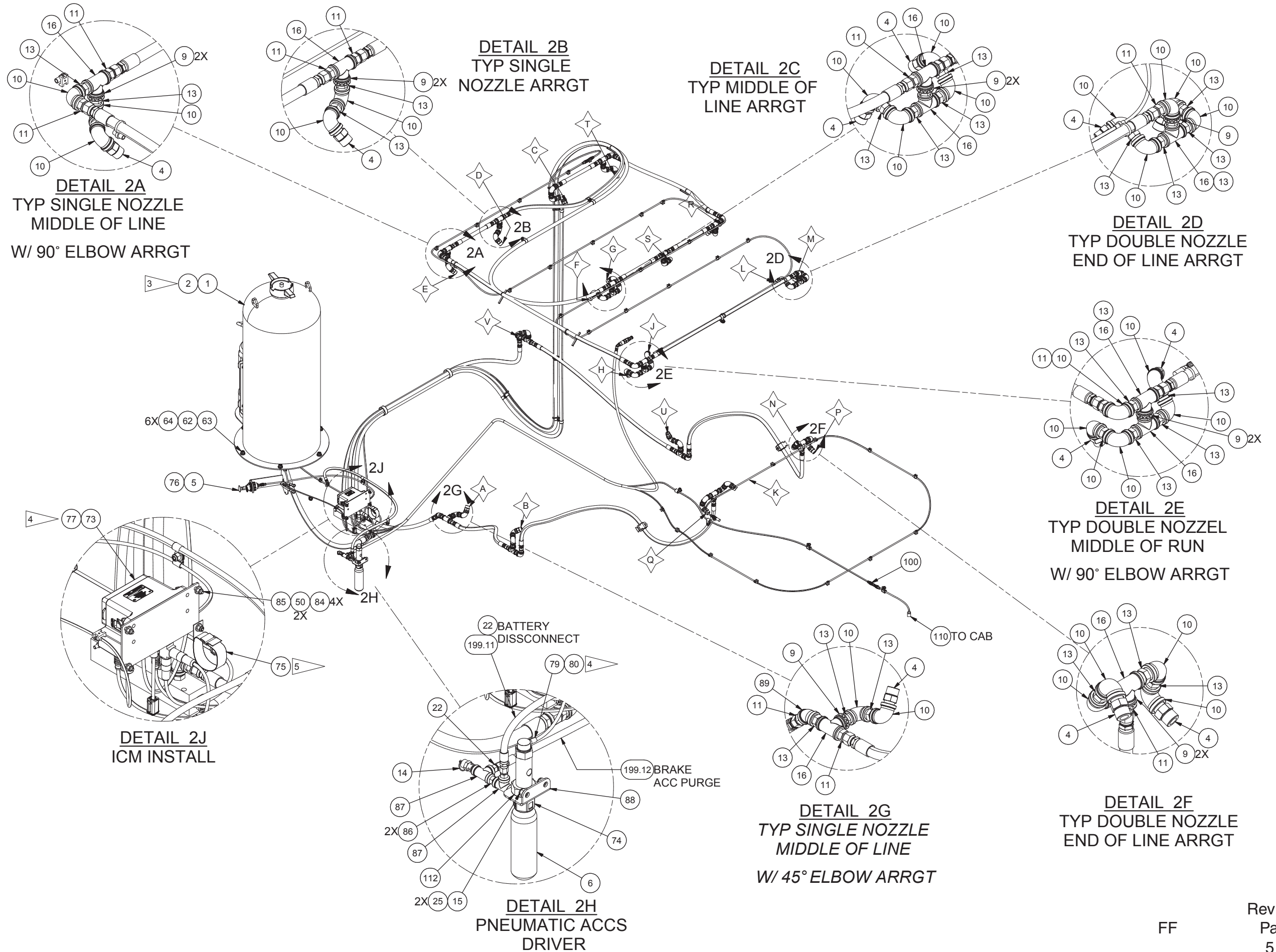
1. ITEMS 70,105,106,107, & 108 ARE NOT SHOWN. ITEM 108 COMES WITH NOZZLE KIT. ITEM 70 IS TO BE USED WHEN PASSING HOSE THROUGH OR AROUND ANY SHARP EDGES OF A DECK OR BULKHEAD. ITEM 105 IS TO BE USED WHEN PASSING CHECKFRE WIRES THROUGH OR AROUND ANY SHARP EDGES OF A DECK OR BULKHEAD. THE USE OF ITEM 106 IS TO BE USED ON ALL THREADED PIPE CONNECTIONS. DO NOT ALLOW TAPE INSIDE OF CONNECTION. THE USE OF LIQUID SEALANTS IS NOT APPROVED BY ANSUL. ITEM 107 IS TO BE USED AS REQUIRED TO ENSURE A TIGHT CONNECTION WHEN ATTACHING FITTINGS TO NOZZLE BRACKET.

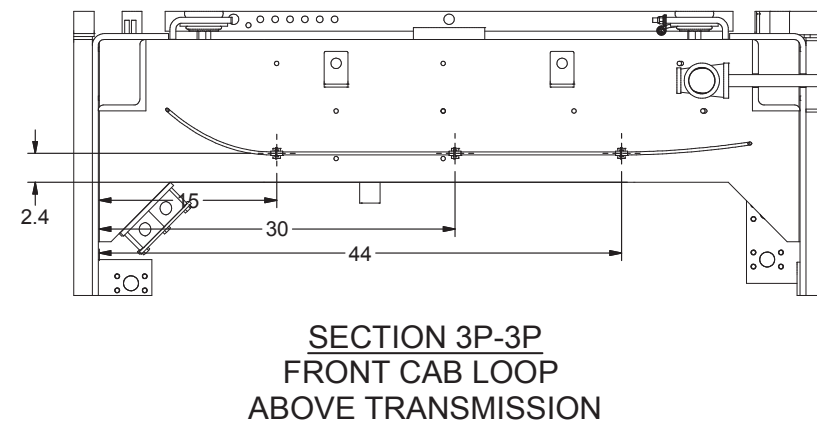
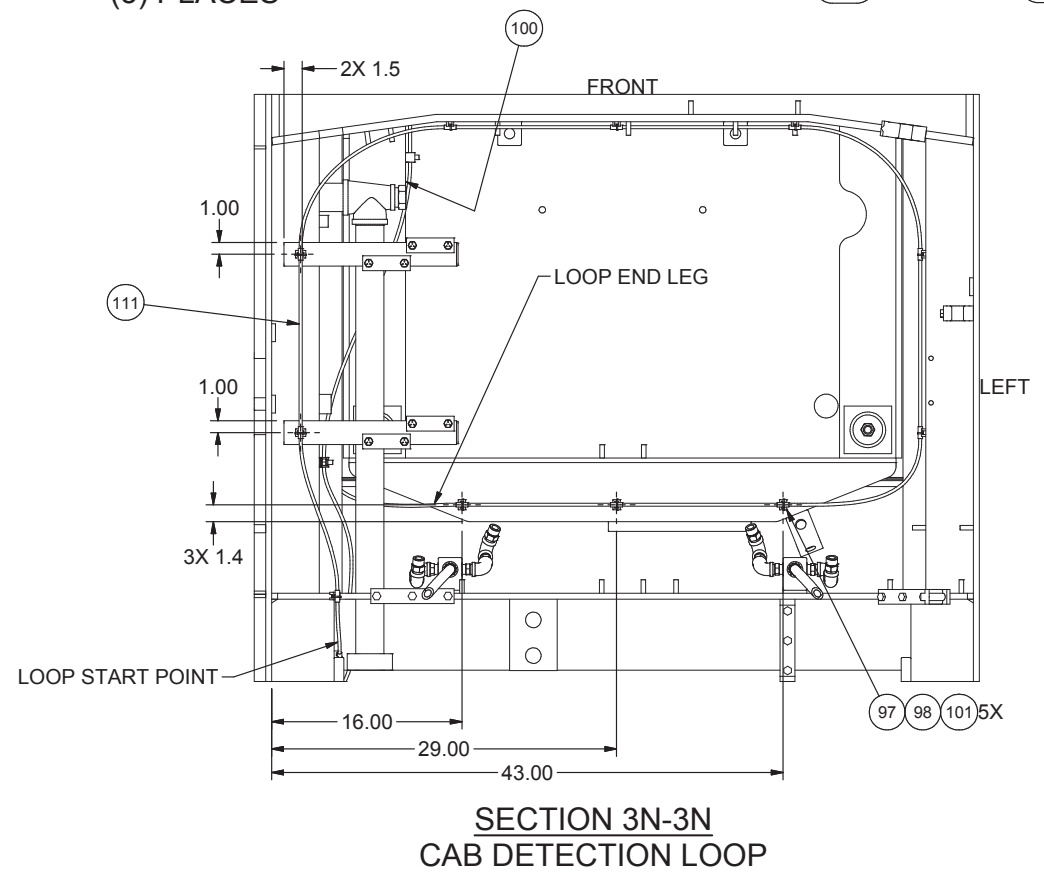
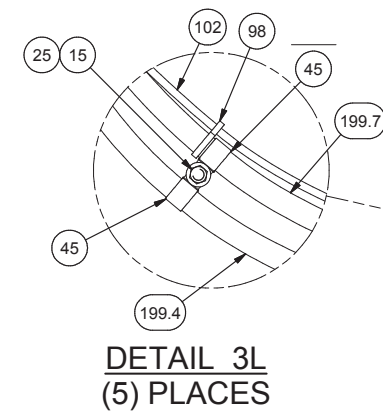
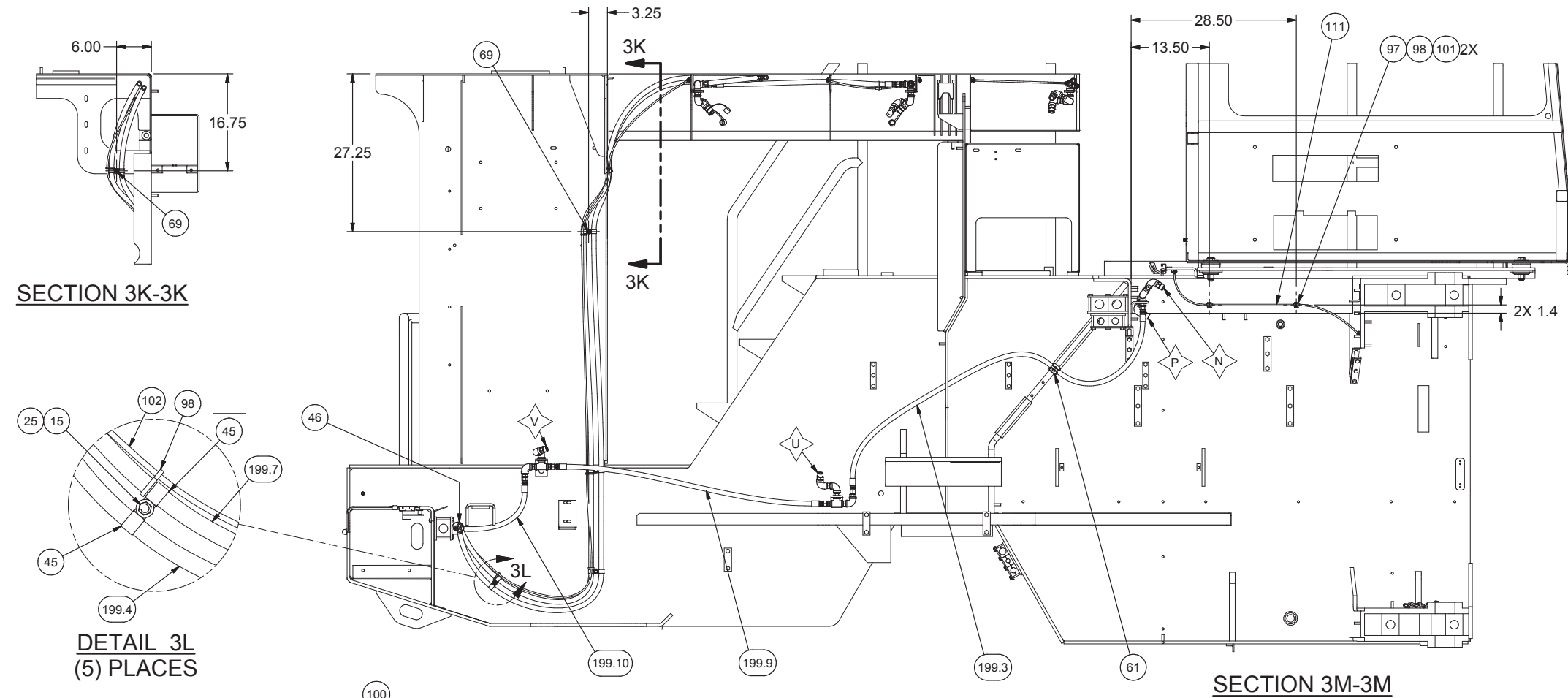
2. ANSUL RECOMMENDS THE FOLLOWING MINIMUM BEND RADII FOR PARKER 26 SERIES HOSES. #4 --- 4.00 IN, #8---7.00 IN, #12---9.50 IN. ALL ANSUL CABLES HAVE A MINIMUM BEND RADIUS OF 2.5 INCHES.

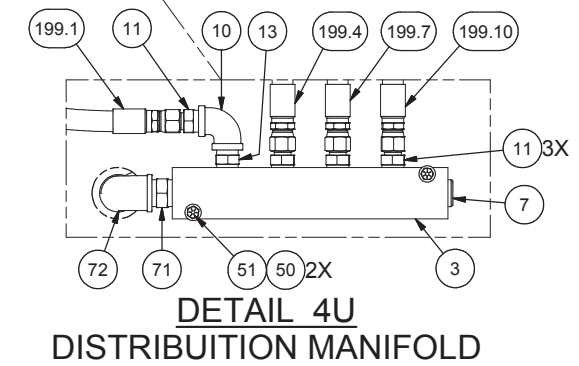
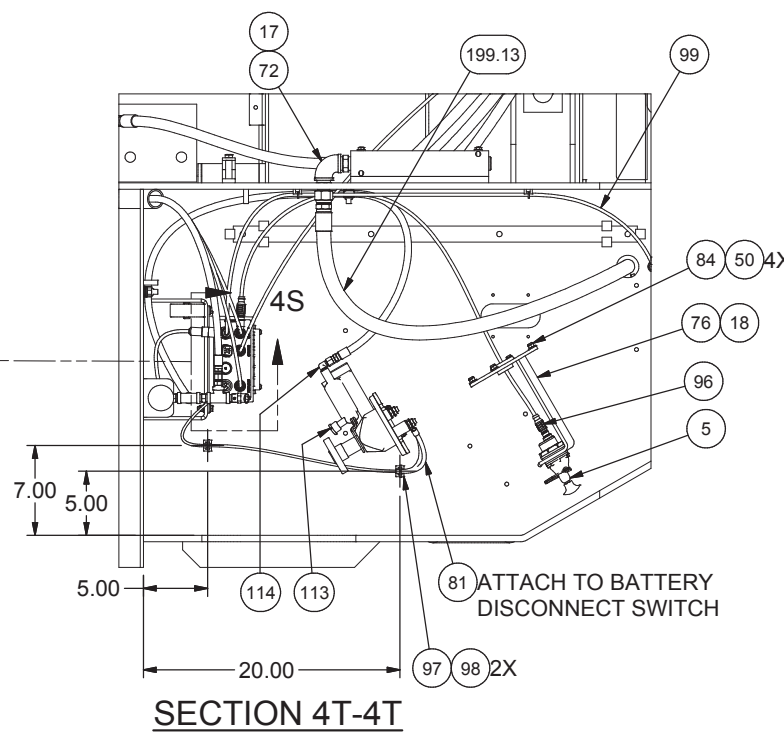
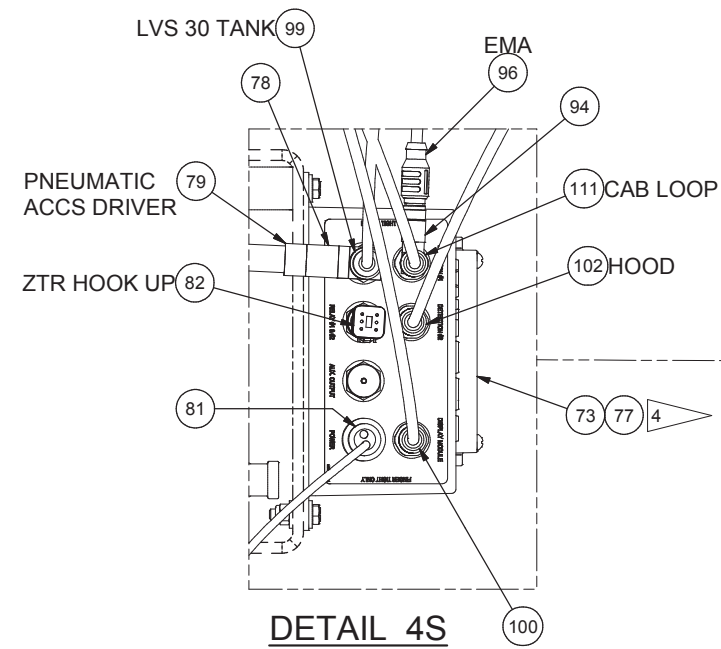
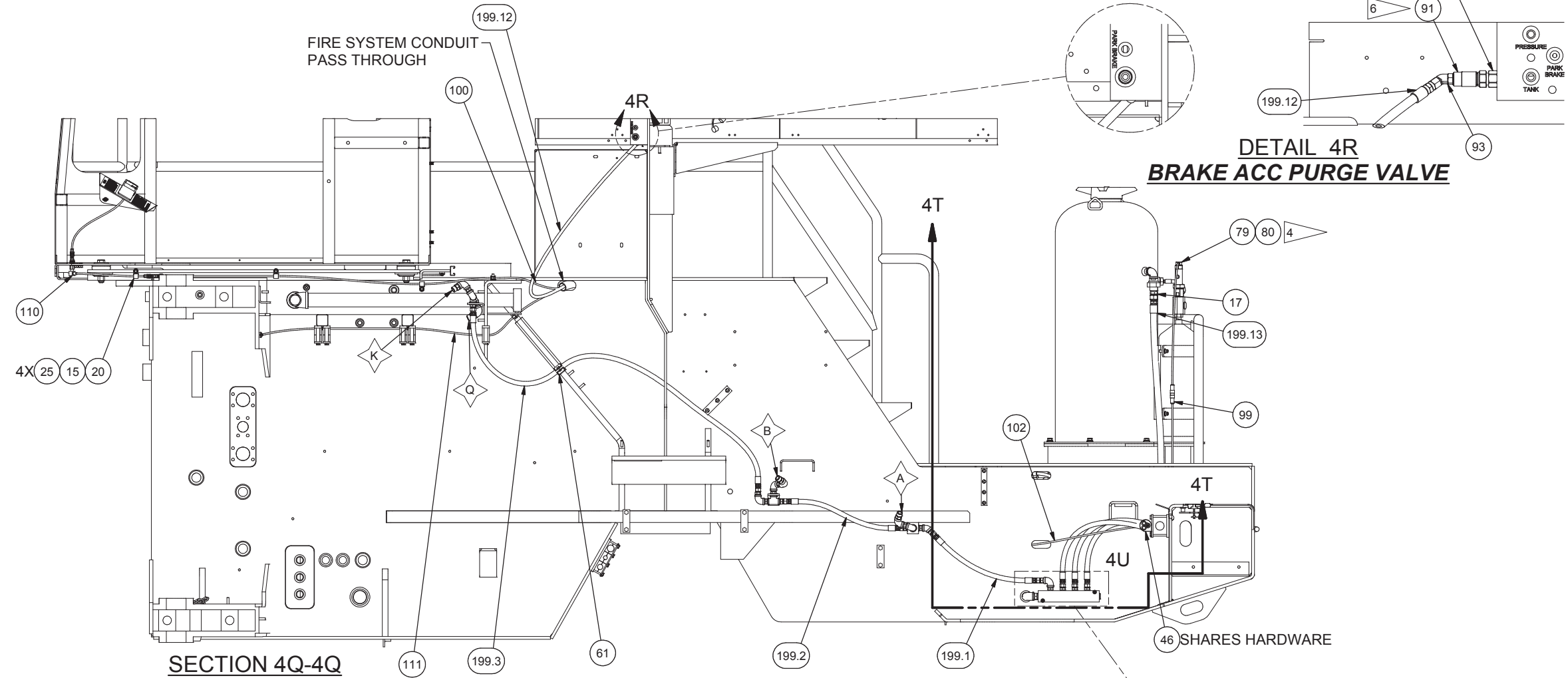
- 3 WHEN FILLING TANK USE A FUNNEL AND LONG HOSE THAT REACHES BOTTOM OF TANK TO PREVENT SLOSHING OF LIQUID FOAM AGENT. THE CHEMICAL FOAM BUBBLES MAY TAKE DAYS TO DISSIPATE WHEN AGITATED.
- 4 DO NOT INSTALL ITEM 80, THIS WILL ARM FIRE SUPPRESSION SYSTEM. THE ADDITION OF POWER BY ITEM 77 (BATTERY) OR 81 (POWER CABLE) WILL ACTIVATE SYSTEM FOR NORMAL DUTY. BAG ITEMS 77 & 80 IN A BAG LABELED FIRE SYS ACTIVATION AND SECURE IN CAB TO DISPLAY UNIT WIRING WITH CABLE TIE.
- 5 ITEM 42 IS USED TO STOW EXTRA CABLES, BY COILING WIRES AND STRAPPING IN PLACE. ALL ANSUL CABLE HAVE A MINIMUM BEND RADIUS OF 2.5 INCHES.
- 6 FOR BRAKE ACCUMULATOR PURGE SYSTEM INSTALL BEFORE SHIPPING TO FINAL CUSTOMER. REMOVE EXISITNG BRAKE ACCUMULTOR DRAIN VALVE AND INSTALL ITEMS 90 & 91. TORQUE ITEM 594357 TO 30-35 FT LBS, THEN INSTALL ITEM 594358 TO 20-25 FT-LBS.

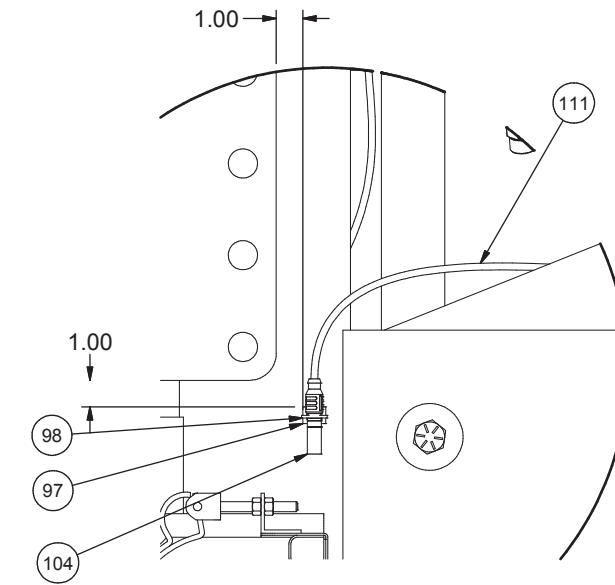
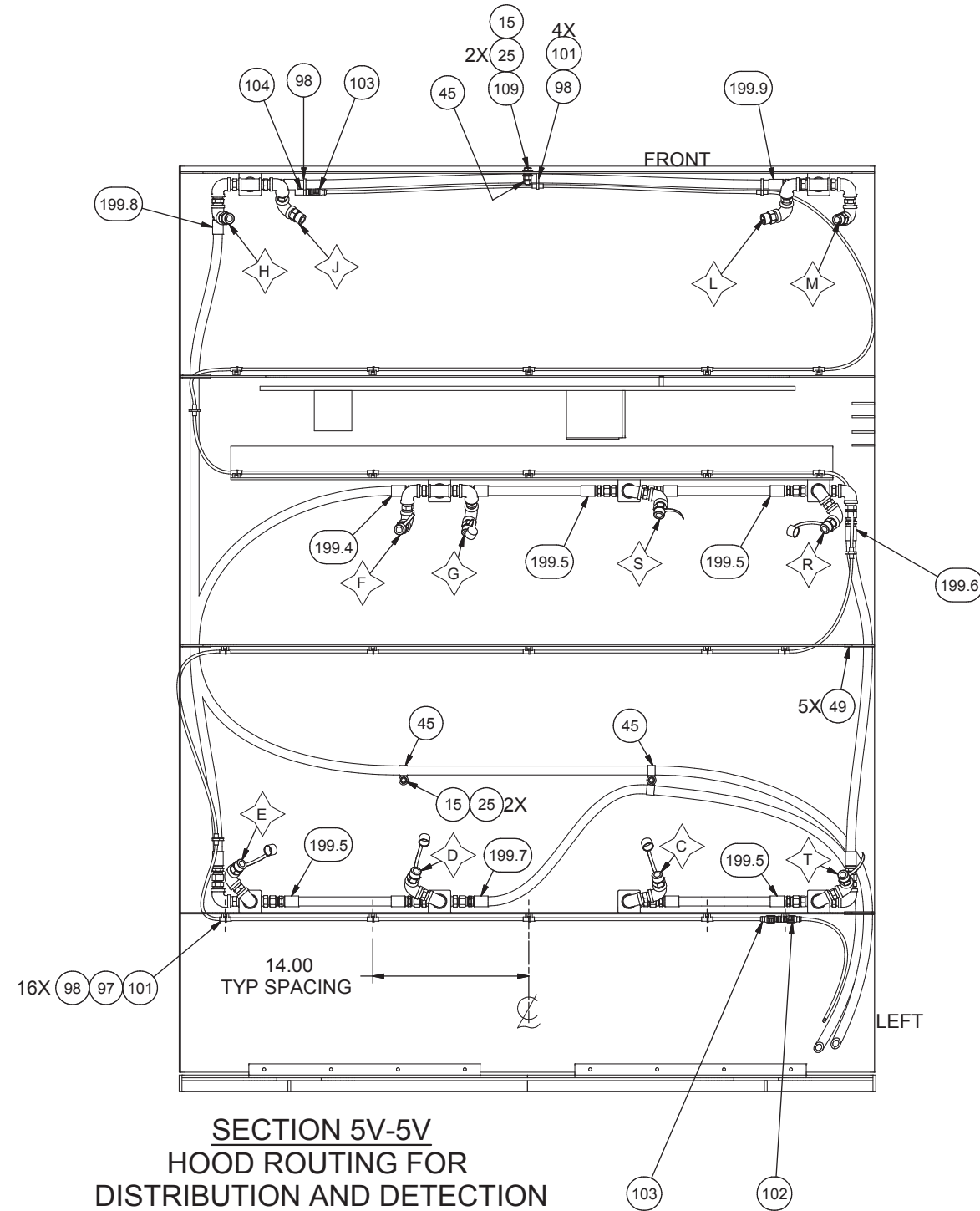


FF

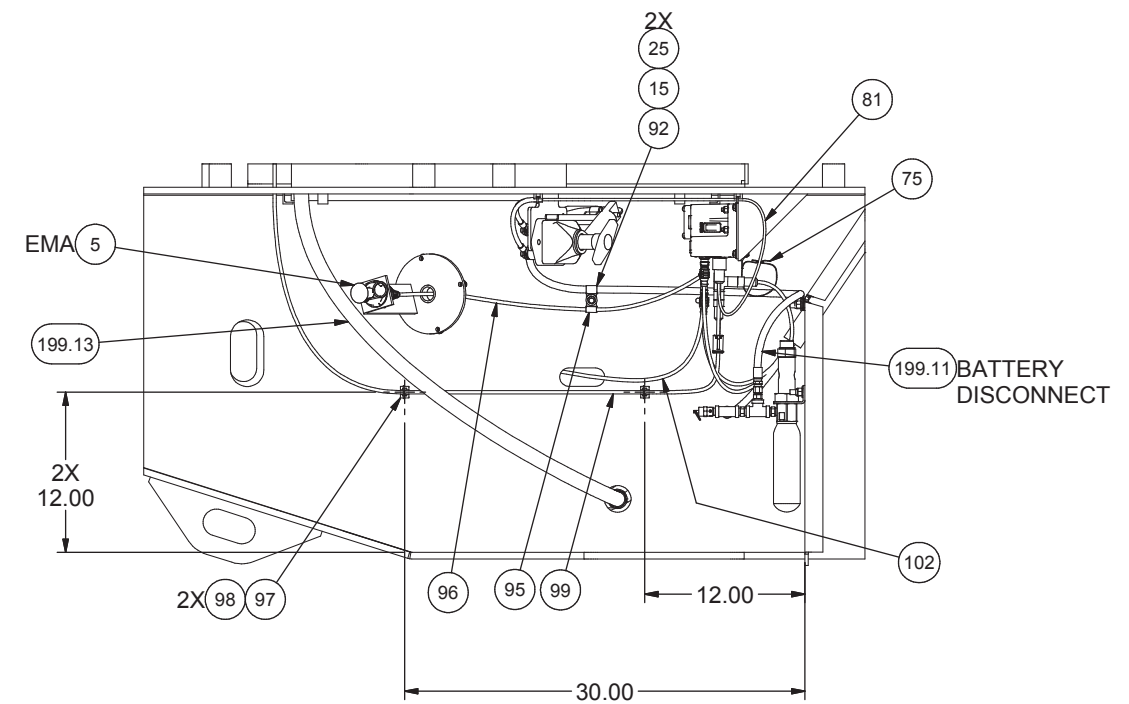








**DETAIL 5W  
CAB LOOP TERMINATION ON DECK**



**VIEW 5X-5X  
RIGHT REAR BUMPER BOX**