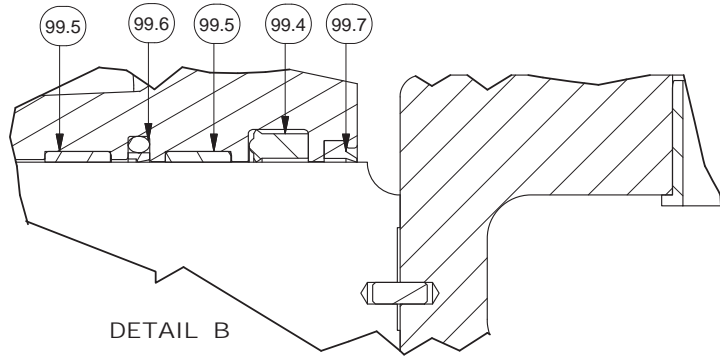
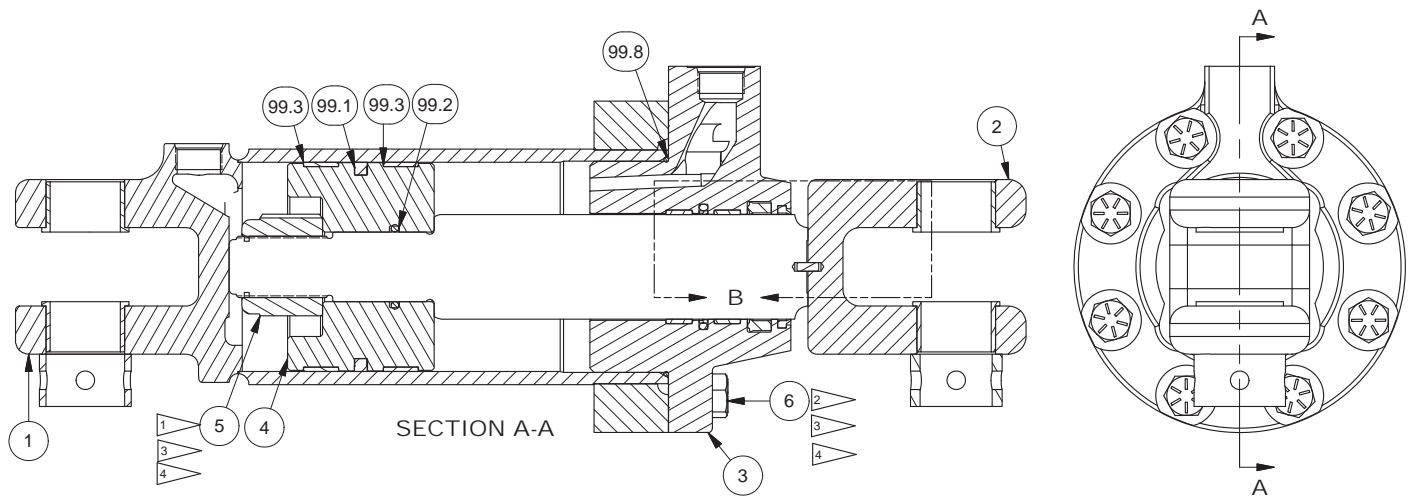


Cylinder Assembly, Tilt



TORQUE REQUIREMENT NOTES:
 1: TORQUE ITEM 5 TO 2,000 FT-LBS
 2: TORQUE ITEM 6 TO 315 FT-LBS
 3: REMOVED DIRT, LOOSE SCALE, BURRS AND PAINT FROM THE MATING SURFACES OF THE BOLTED JOINTS.
 4: USE MEDIUM STRENGTH BLUE LOCTITE 242.



Item	Part No.	Qty	Description	Item	Part No.	Qty	Description
	596090		Assembly, Cylinder - Tilt				
1	596110	1	. Weldment, Barrel & Base	99	593808	1	. Kit, Packing
2	596115	1	. Weldment, Stem	99.1		1	.. Seal, Piston
3	596117	1	. Gland, Packing	99.2		1	.. O-Ring
4	596120	1	. Piston, Cylinder	99.3		2	.. Wear Ring, Piston
5	219929	1	. Nut, Esna	99.4		1	.. Seal
6	221660W	8	. Capscrew	99.5		1	.. Seal, Buffer
				99.6		2	.. Wear Ring, Rod
				99.7		1	.. Wiper Ring
				99.8		1	.. O-Ring