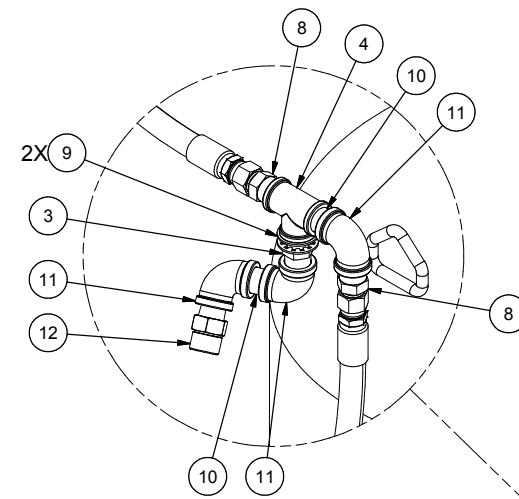

**Fire Suppression, LH Bay, Auto,
Components**

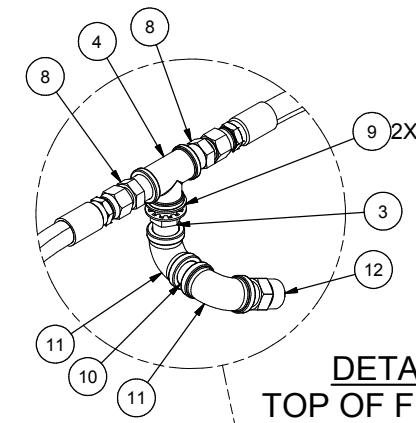
Fire Suppression, LH Bay, Auto, Components

Item	Part No.	Qty	Description	Item	Part No.	Qty	Description
	594831		Fire Suppr, LH Bay, Auto Cmnpts				
1	-----	1	. Tank, Lvs-30	37	-----	1	. Battery
2	-----	1	. Manifold Block	38	-----	1	. Actuator
3	209161	5	. Fitting	39	-----	2	. Cable, Drop
4	249733	3	. Tee, Pipe	40	-----	2	. Actuation Device, Protracting
5	250352	1	. Elbow, Pipe	41	209752	1	. Fitting
6	PPE7500200	1	. Nipple, Pipe	42	-----	1	. Connector, Tee
7	209759	2	. Fitting	43	595241	1	. Bracket
8	209633	10	. Fitting	44	594951	1	. Cable Assembly, Relay Circuit
9	-----	6	. Lockwasher	45	-----	1	. Cable
10	589926	4	. Nipple, Pipe	46	296418W	4	. Hard Washer
11	249732	8	. Elbow, Pipe	47	302400W	2	. Locknut
12	-----	3	. Kit, Nozzle	48	287816W	4	. Capscrew
17	R13801764	1	. Fitting	49	R13809366	2	. Capscrew
18	-----	1	. Relief Valve	50	73969	1	. Cable Tie
22	221560W	6	. Capscrew	51	595376	1	. Elbow, Pipe
23	R13812516	6	. Lockwasher	52	221280	1	. Fitting
24	221771W	6	. Washer	53	596370	1	. Fitting
25	296417W	12	. Hard Washer	99	595478	1	. Kit, Hose
26	Y23C-M0670	2	. Capscrew	99.1	R1939776	1	.. Hose Assembly
27	15374	1	. Fitting	99.2	258556	2	.. Hose Assembly
28	302399W	6	. Hex Nut	99.3	254279	1	.. Hose Assembly
29	590087	1RL	. Tape	99.4	258552	1	.. Hose Assembly
30	-----	6	. Chemical, Fire Suppr	99.5	249450	1	.. Hose Assembly
31	-----	0	. Cap, Blow-Off				
32	Y27E-14	1	. Washer				
35	-----	1	. Control Module, Interface				
36	-----	1	. Cartridge, Nitrogen				

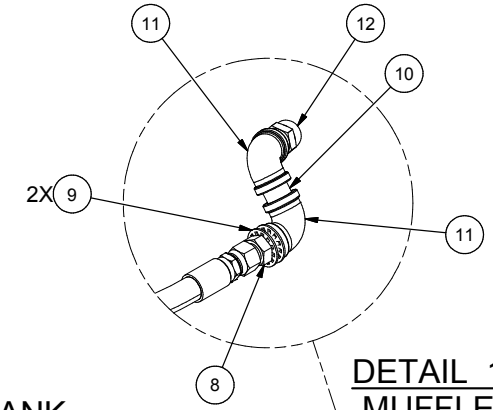
Fire Suppression System should be serviced by an authorized ANSUL service technician.



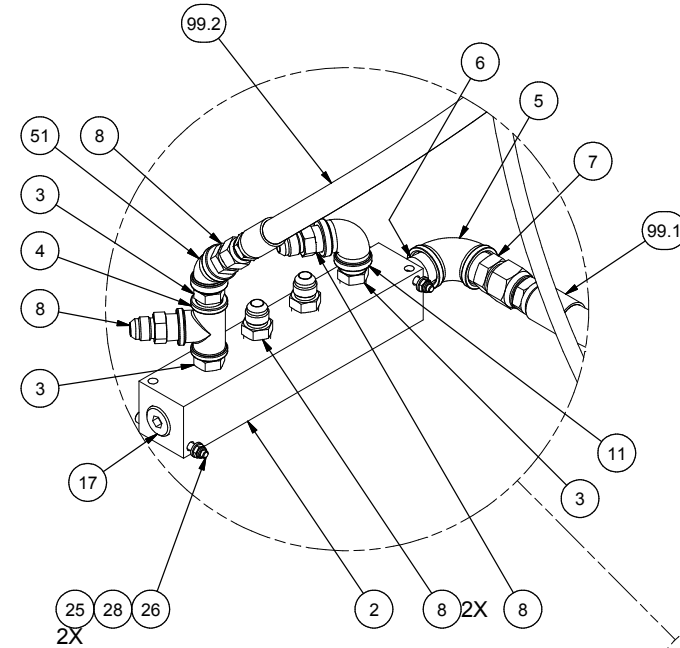
DETAIL 1A
BATTERY TRAY



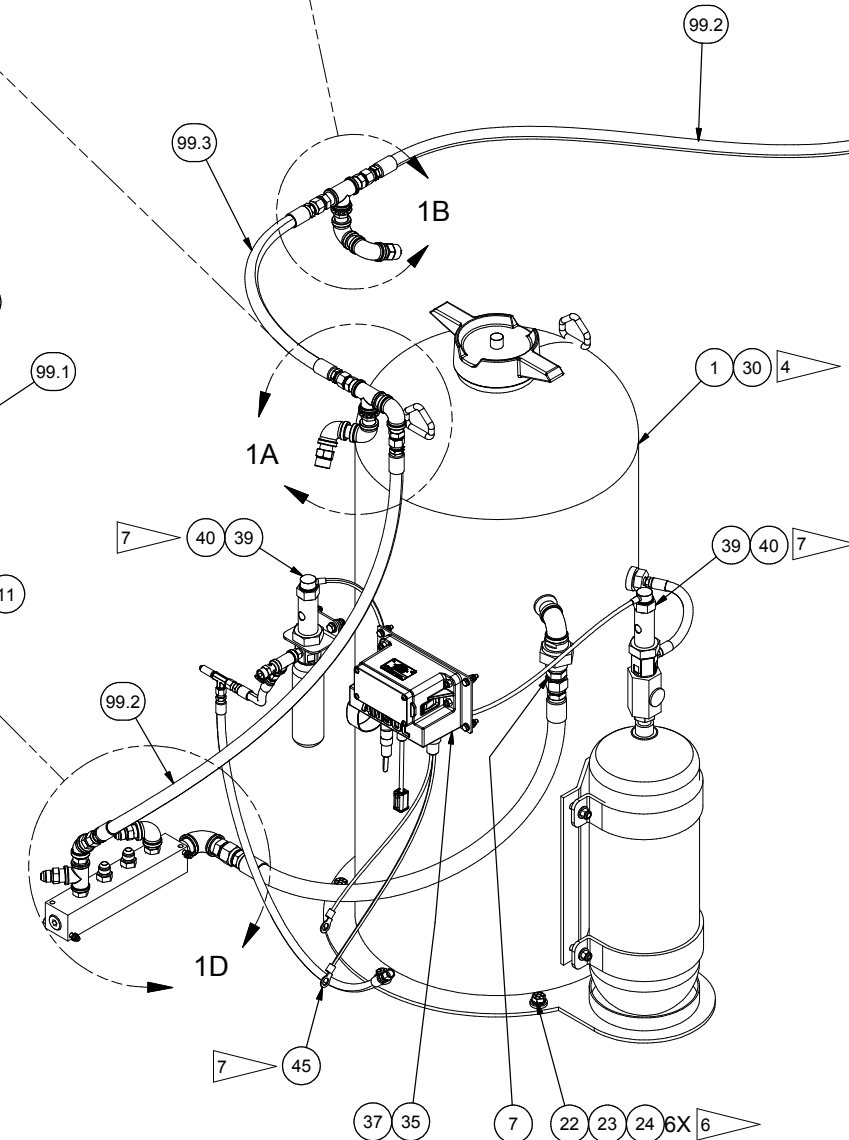
DETAIL 1B
TOP OF FUEL TANK



DETAIL 1C
MUFFLER



DETAIL 1D
DISTRIBUTION MANIFOLD ASSY



NOTES:

1. ITEMS 29, 31 & 32 ARE NOT SHOWN. ITEM 31 COMES WITH NOZZLE KIT. ITEM 32 IS TO BE USED WHEN THREADS BOTTOM OUT WHEN ATTACHING FITTINGS TO NOZZLE BRACKET.

2. ANSUL RECOMMENDS THE FOLLOWING BEND RADII: FOR PARKER 426 SERIES OF HOSES
#4 --- 4.00 IN, #8 --- 7.00 IN, #12 --- 9.50 IN.

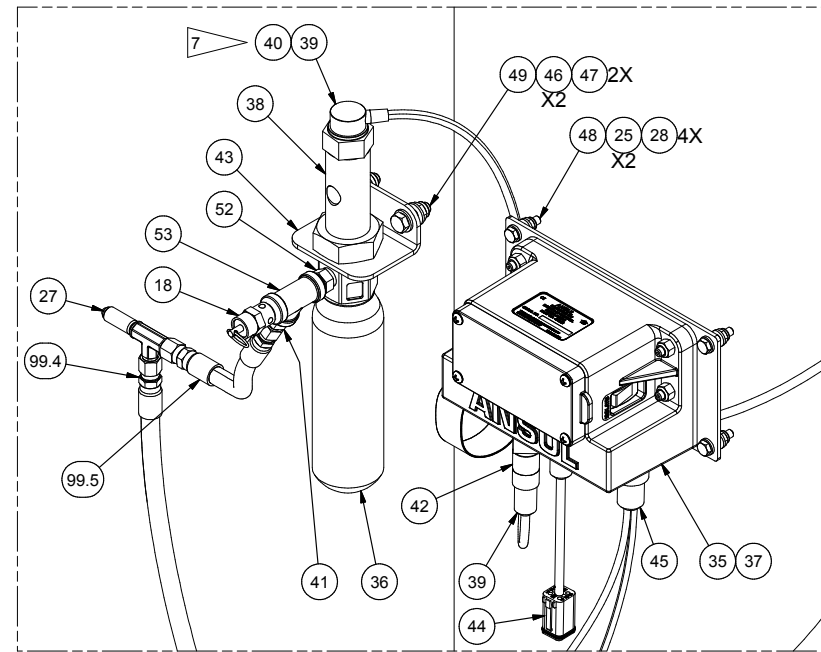
3. ITEM 29 IS TO BE USED ON ALL THREADED PIPE CONNECTIONS. DO NOT ALLOW TAPE ON THE INSIDE OF CONNECTION. THE USE OF LIQUID SEALANTS IS NOT APPROVED BY ANSUL.

4 WHEN FILLING TANK, USE A FUNNEL AND LONG HOSE THAT REACHES THE BOTTOM OF THE TANK. TO PREVENT SLOSHING OF LIQUID FOAM AGENT. THE CHEMICAL FOAM BUBBLES MAY TAKE DAYS TO DISAPPEAR WHEN AGITATED.

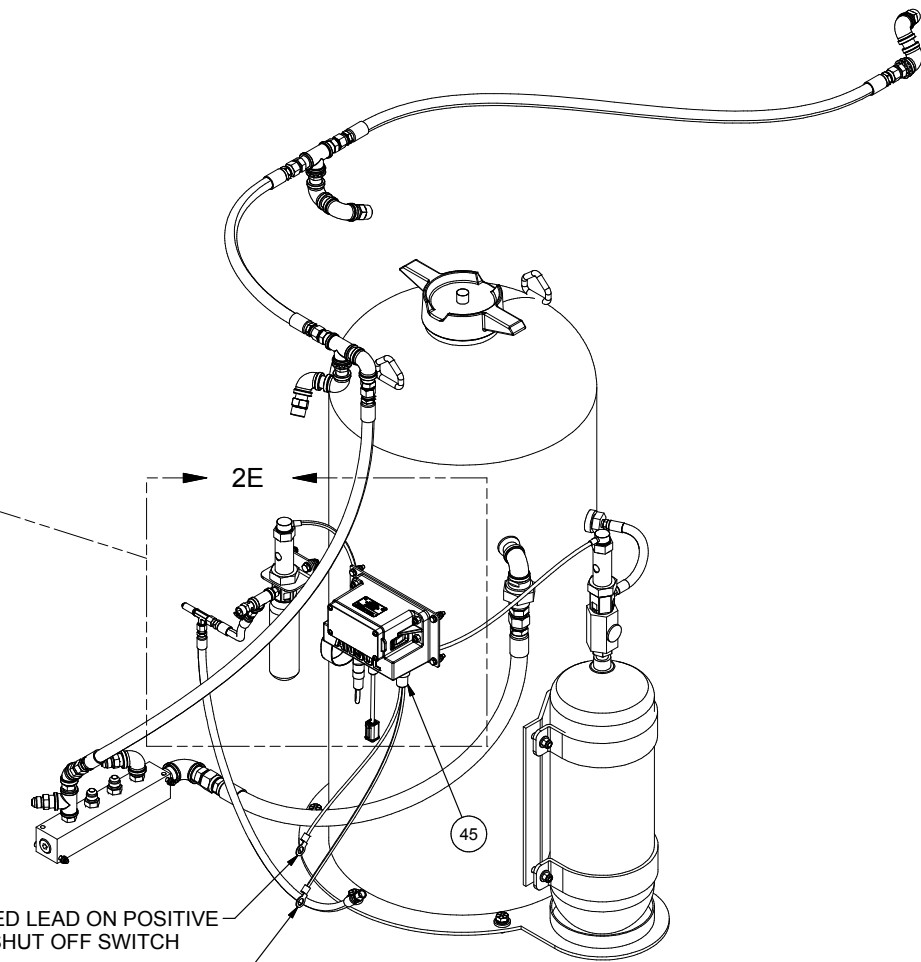
5. ALL ANSUL CHECKFIRE CABLES HAVE A MINIMUM BEND RADIUS OF 2.5 INCHES.

6 TORQUE - SEE TORQUE SPECIFICATION CHART, FORM 80-1057.

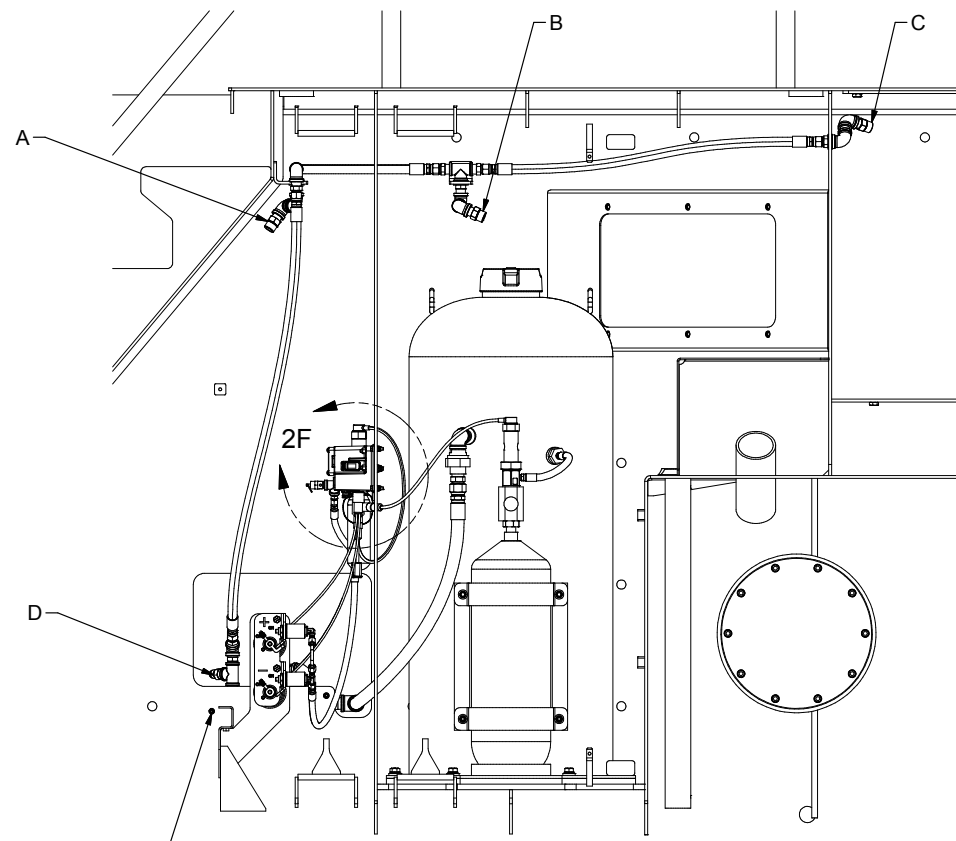
7 DO NOT INSTALL ITEMS 40. THESE ITEMS WILL ARM THE CHECKFIRE SYSTEM. WHEN HOOKED UP TO VEHICLE POWER OR BATTERY, WITHOUT ITEMS 40 INSTALL THE IN CAB DISPLAY UNIT WILL CHIRP & FLASH EVERY TEN SECONDS TO ALERT THE OPERATOR, THAT THE FIRE SUPPRESSION SYSTEM IS NOT READY.



DETAIL 2E
CONTROL MODULE
SOME COMPONENTS REMOVED FOR CLARITY

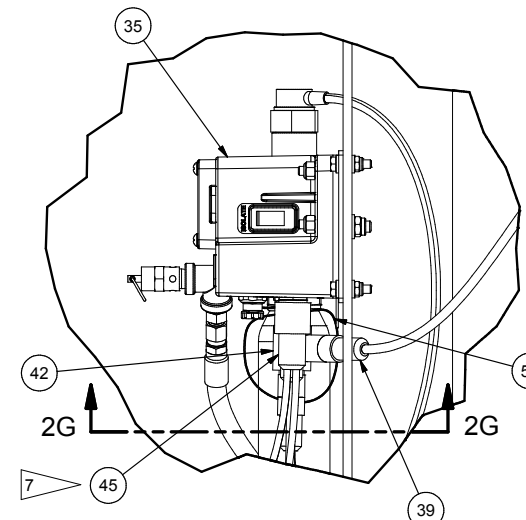


INSTALL RED LEAD ON POSITIVE
BATTERY SHUT OFF SWITCH
INSTALL BLACK LEAD ON NEGATIVE
BATTERY SHUT OFF SWITCH

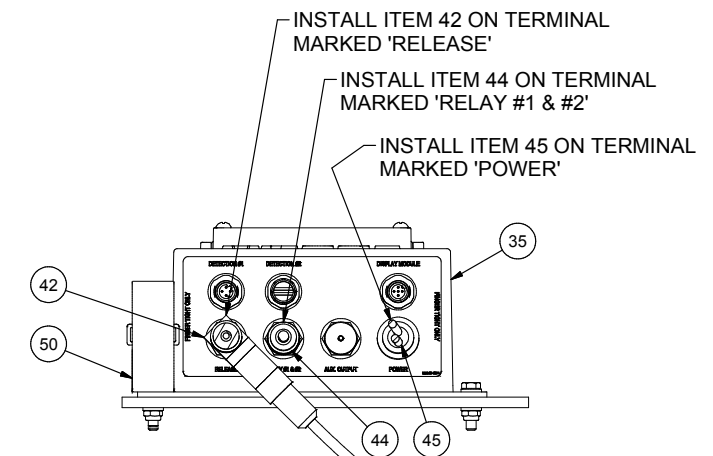


NOTE: ITEM 2 IS BOLTED ON OTHER SIDE OF WALL

LH SERVICE BAY
VIEWED FROM OUTSIDE LOOKING IN
SOME COMPONENTS REMOVED FOR CLARITY



DETAIL 2F



SECTION 2G-2G
SOME COMPONENTS REMOVED FOR CLARITY
VIEW ROTATED 90° FOR CLARITY