

---

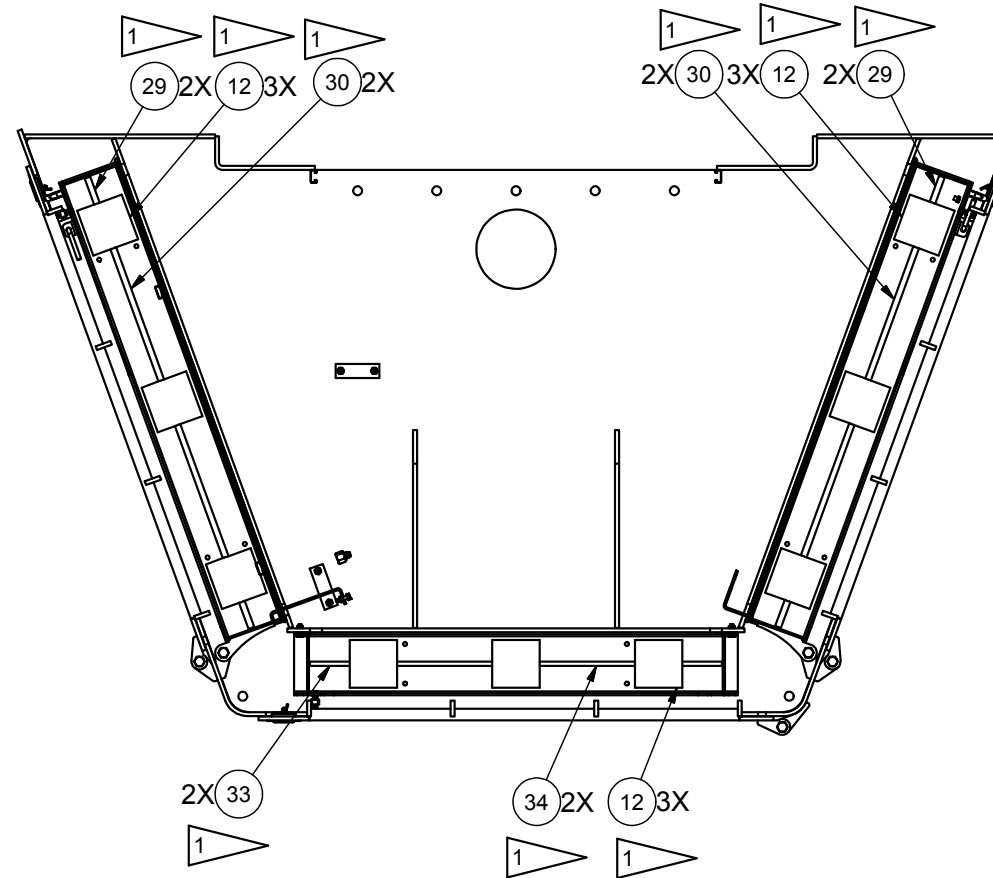
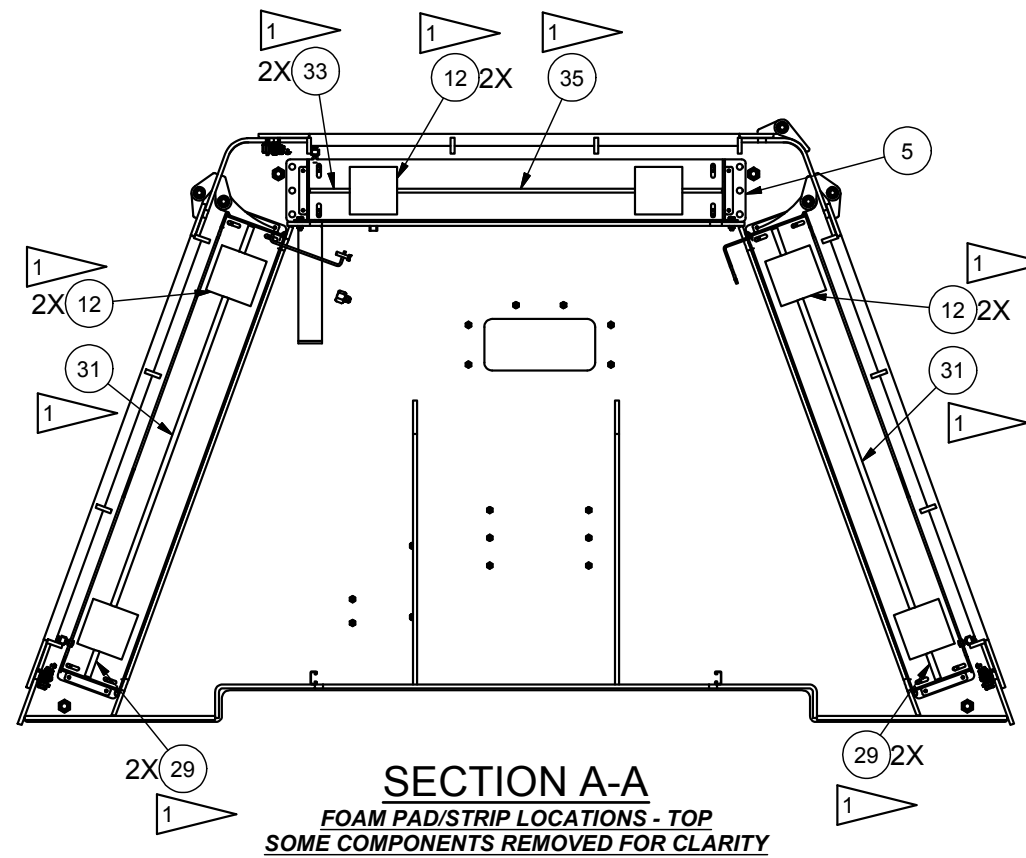
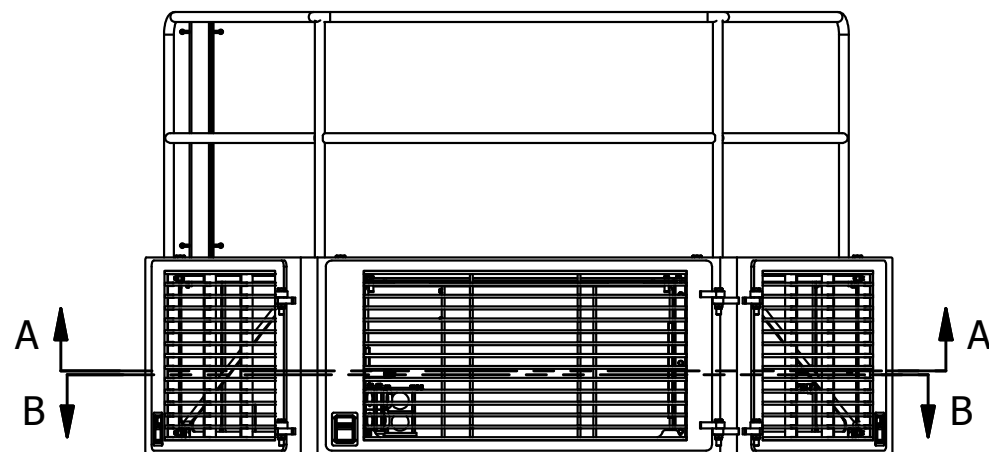
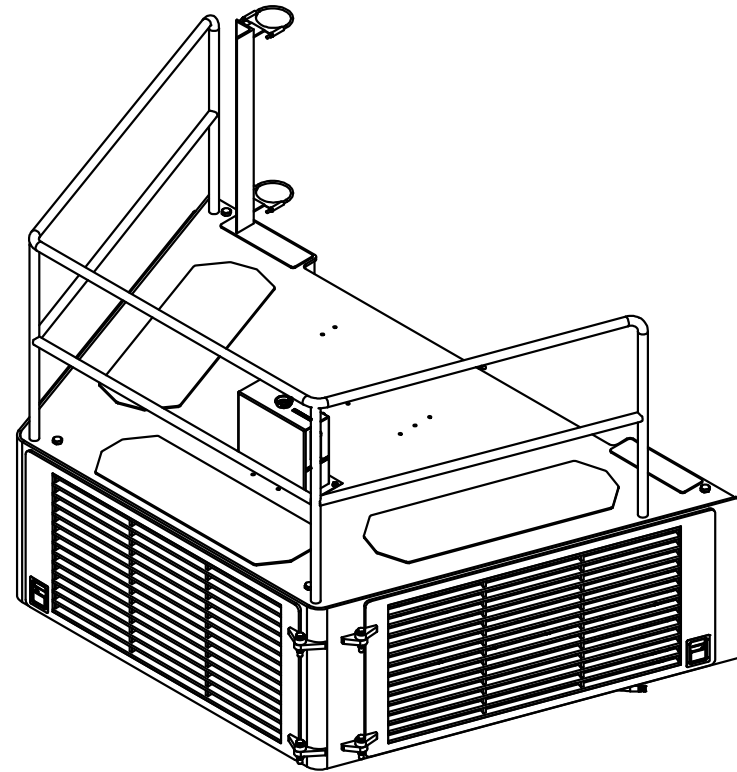
Assembly, Air Box

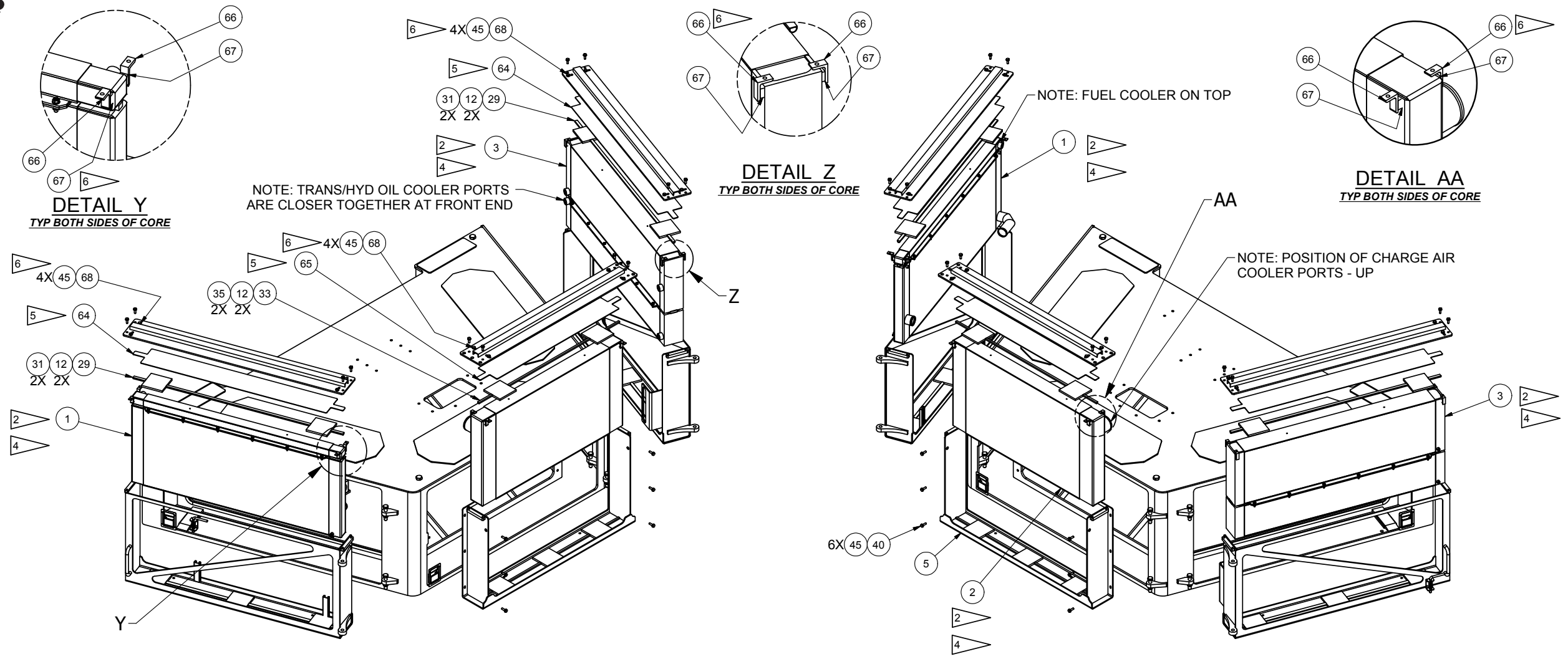
## Assembly, Air Box

Item	Part No.	Qty	Description	Item	Part No.	Qty	Description
	<b>594781</b>		<b>Assembly, Air Box</b>				
1	594642	1	. Cooling Package, Rad/FOC	42	595495	1	. Fitting
	596392	1	. Radiator Subassembly	43	595496	1	. Fitting
	596393	1	. Fuel Cooler Subassembly	44	595497	2	. Fitting
2	594643	1	. Cooling Core, CAC	45	296420W	24	. Hard Washer
3	594644	1	. Cooling Package, TOC/HOC	46	590058	2	. Clamp, Hydra-Zorb
	596394	1	. Trans Oil Cooler Subassembly	47	595969	1	. Stacked Clamps
	596395	1	. Hyd Oil Cooler Subassembly	48	243489	4	. Clamp
4	594889	1	. Surge Tank	49	R13809931	1	. T-Bolt Clamp
5	595023	1	. Weldment, Frame	50	225369	6	. T-Bolt Clamp
6	246916	1	. Sensor, Coolant Level	51	R13803034	1	. Clip, Insulated
7	595214	1	. Tube, CAC	52	R13803043	2	. Clip, Insulated
8	595125	1	. Tube, CAC	53	R13808095	4	. Clip, Insulated
9	243488	2	. Connector	54	209698	1	. Clamp
10	595121	1	. Tube, Radiator	55	R13808108	2	. Clip, Insulated
11	595122	1	. Tube, Radiator	56	R13805003	1	. Clip, Insulated
12	595195	15	. Pad, Isolator	57	209706	1	. Clamp
13	595500	1	. Plate, Mounting	58	231248	3	. Clamp, Hydra-Zorb
14	252319	1	. Check Valve	59	588316	2	. Clamp, Hydra-Zorb
15	589536	1	. Ball Valve	60	231537	2	. Clamp, Hydra-Zorb
16	595337	1	. Weldment, Clamp	61	595502	1	. Kit, Hose
17	209570	1	. Fitting	61.1	225829-80	1	. Hose, Radiator
18	231454	1	. Fitting	61.2	211791-76	1	. Hose, Radiator
19	233378	1	. Fitting	61.3	211791-81	1	. Hose, Radiator
20	209462	1	. Fitting	61.4	R18564	2	. Hose, Radiator
21	222832	1	. Fitting	61.5	209842-58	1	. Hose, Push On
22	209413	1	. Fitting	61.6	595490	1	. Hose Assembly, Fuel
23	2510159	2	. Fitting	61.7	595491	1	. Hose Assembly, Fuel
24	209406	4	. Fitting	61.8	595493	1	. Hose Assembly, Fuel
25	23543	1	. Fitting	61.9	595492	1	. Hose Assembly, Fuel
26	2305620W	2	. Fitting	61.10	207854	3	. Hose Assembly
27	595330	8	. Plate, Washer	61.11	208881	1	. Hose Assembly
28	209512	4	. Fitting	61.12	206319	1	. Hose Assembly
29	238668-3.5	8	. Weatherstrip	61.13	595123	4	. Hose Assembly
30	238668-17.75	4	. Weatherstrip	61.15	595499	1	. Hose Assembly
31	238668-41.5	2	. Weatherstrip	61.16	592057	1	. Hose Assembly
32	238668-175	2	. Weatherstrip	62	593293	1	. Decal, Engine Coolant Fill
33	595198-5	4	. Silicone, Rubber	63	593300	1	. Decal, Engine Coolant Check
34	595198-12	2	. Silicone, Rubber	64	596031	2	. Plate, Core Shim
35	595198-30	1	. Silicone, Rubber	65	596032	1	. Plate, Core Shim
36	17951	1	. Fitting	66	596033	12	. Angle, Bracket
37	219502	2	. Fitting	67	596034	12	. Pad, Isolator
38	302401W	4	. Locknut	68	236805	12	. Capscrew
39	251118	1	. Capscrew	69	210767	1	. Fitting
40	R13811210	6	. Capscrew	70	293631W	1	. Capscrew
41	293629W	7	. Capscrew				

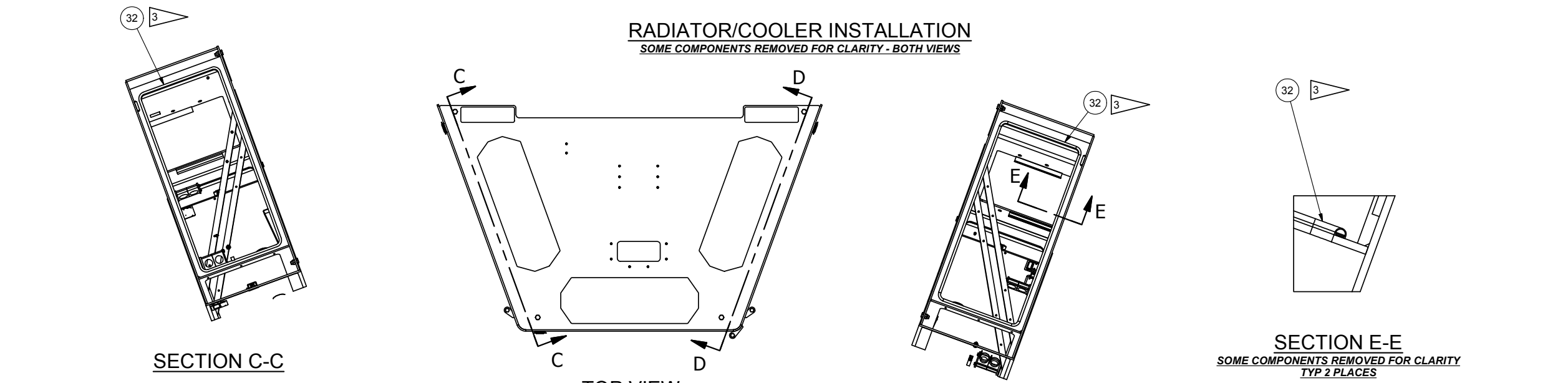
NOTES:

1 CLEAN ANY DEBRIS AND CONTAMINENTS FROM RADIATOR/COOLER FRAMES BEFORE INSTALLING FOAM PADS/STRIPS  
REMOVE ADHESIVE BACKING AND ADHERE FOAM PADS/STRIPS TO RADIATOR/COOLER FRAMES IN LOCATIONS SHOWN



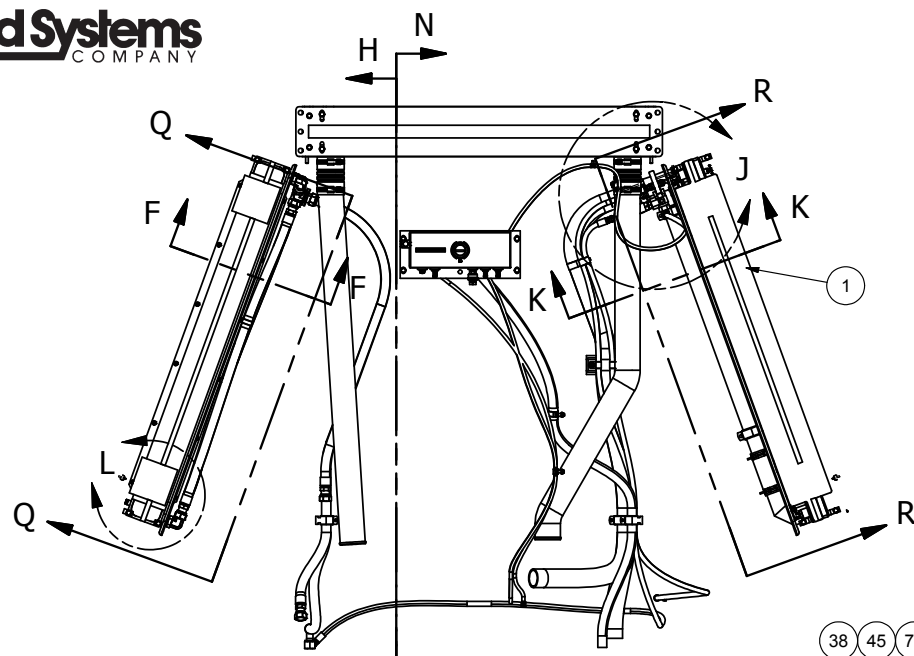


**RADIATOR/COOLER INSTALLATION**  
*SOME COMPONENTS REMOVED FOR CLARITY - BOTH VIEWS*

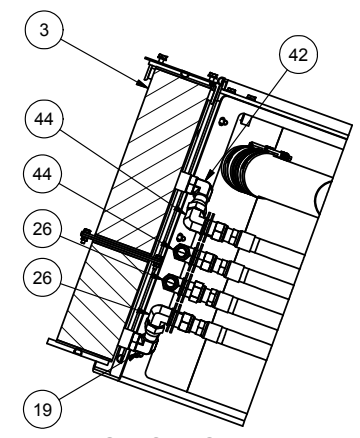


**NOTES:**

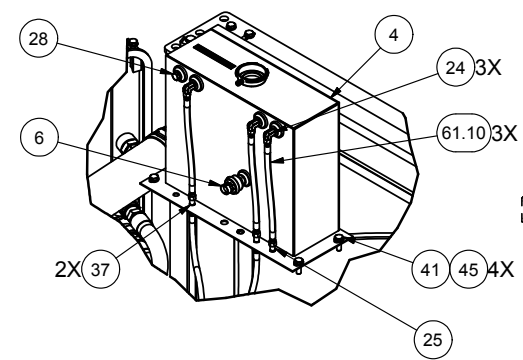
- 2 INSTALL ITEMS 12, 29-31, 33-35 BEFORE INSTALLING ITEMS 1-3
- 3 INSTALL ITEM 32 FLUSH WITH EDGE OF CUTOUT IN AIR BOX WELDMENT
- 4 ALL RADIATOR/COOLER PORTS FACE TOWARDS INSIDE OF AIR BOX WITH DOORS SHUT
- 5 ITEMS 64 & 65 (SHIMS) ARE ONLY REQUIRED IF TOP ISOLATOR PADS (ITEM 12) ARE NOT COMPRESSED A MINIMUM .13" ONCE TOP PLATE IS FULLY INSTALLED.
- 6 ITEMS 66 & 67 (ANGLE & ISOLATOR) ARE REQUIRED FOR FORE & AFT SUPPORT OF THE COOLERS IN THE FRAMES. INSTALL AS SHOWN USING ITEMS 68 & 45 (CAPSCREW & WASHER) THROUGH THE SLOTTED HOLES ON THE TOP PLATE OF EACH CORE FRAME.



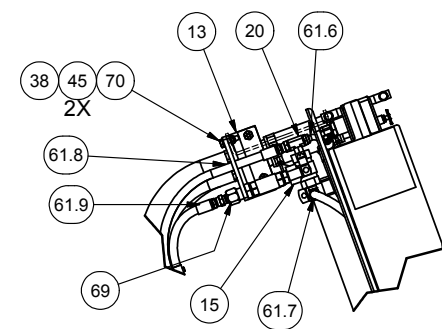
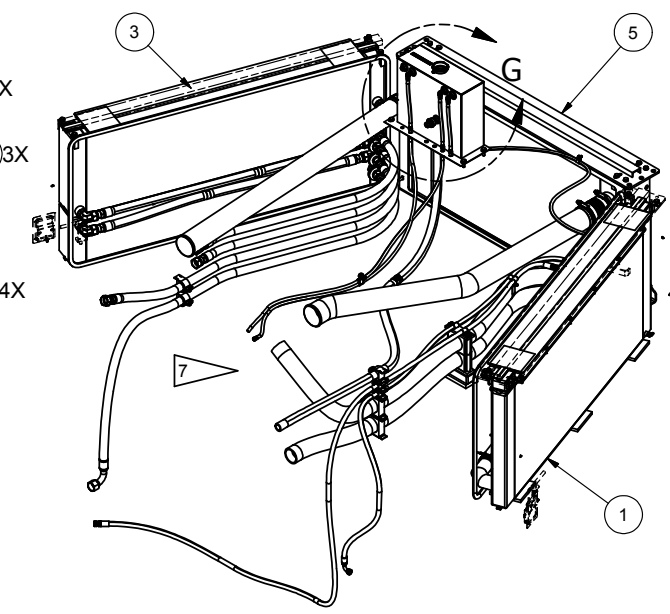
**TOP VIEW**  
*SOME COMPONENTS REMOVED FOR CLARITY*



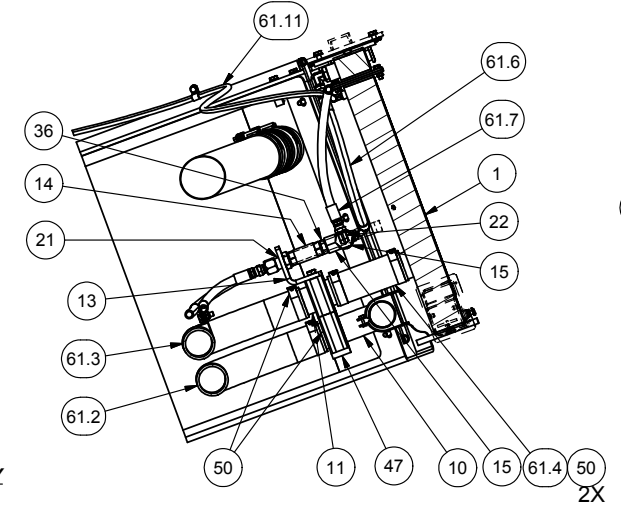
**SECTION F-F**  
*SOME COMPONENTS REMOVED FOR CLARITY*



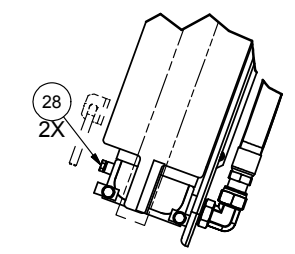
**DETAIL G**



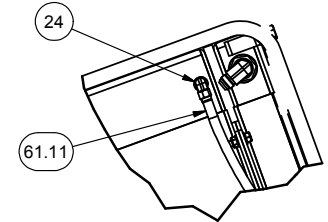
**DETAIL J**  
*SOME COMPONENTS REMOVED FOR CLARITY*



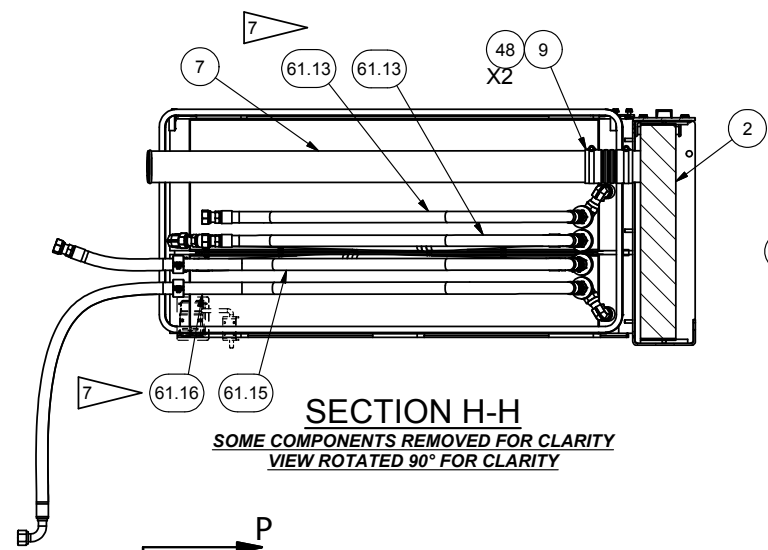
**SECTION K-K**



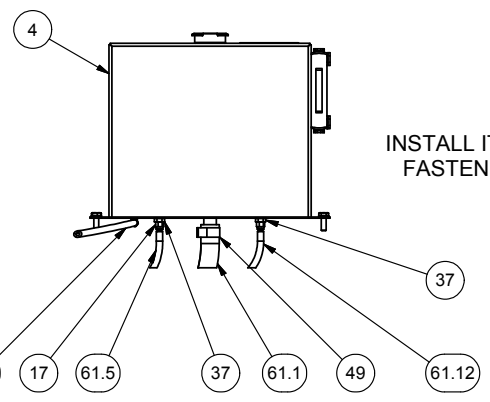
**DETAIL L**



**DETAIL M**  
*SOME COMPONENTS REMOVED FOR CLARITY*

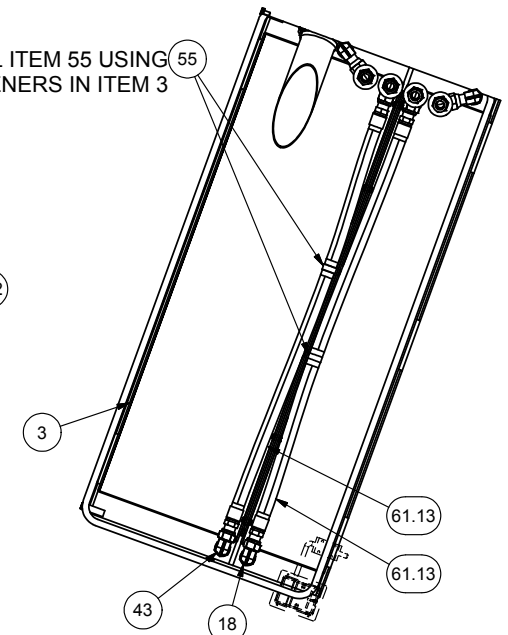


**SECTION H-H**  
*SOME COMPONENTS REMOVED FOR CLARITY*  
VIEW ROTATED 90° FOR CLARITY

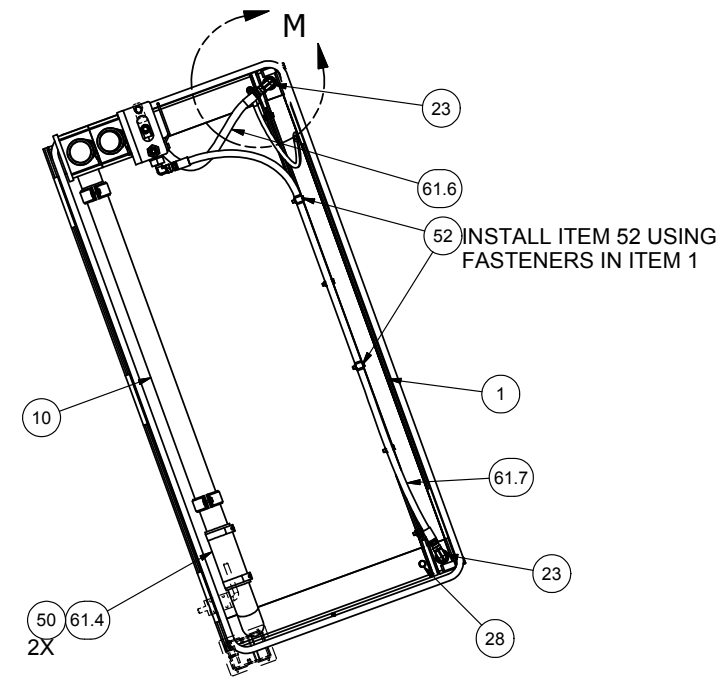


**SECTION P-P**  
*SOME COMPONENTS REMOVED FOR CLARITY*

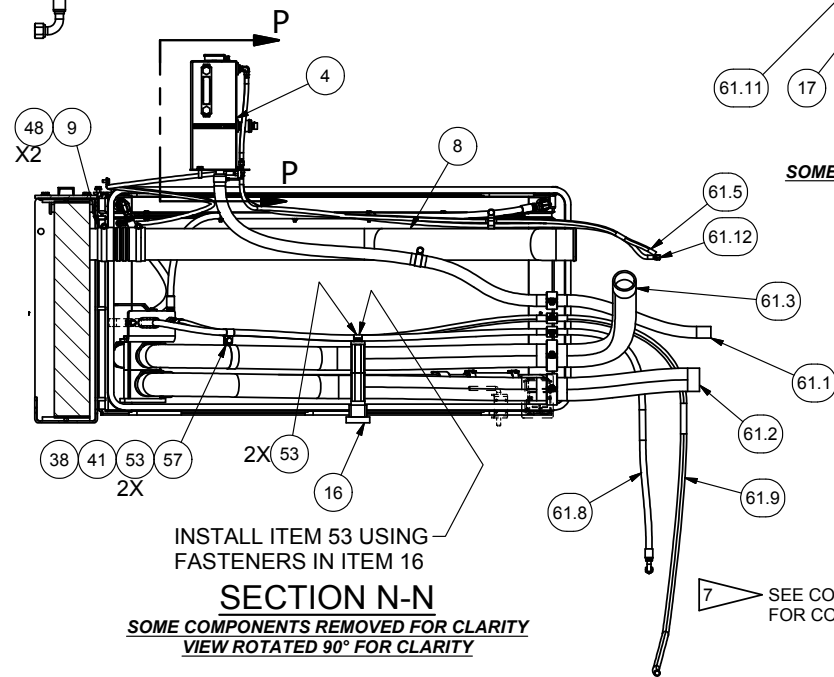
INSTALL ITEM 55 USING FASTENERS IN ITEM 3



**SECTION Q-Q**



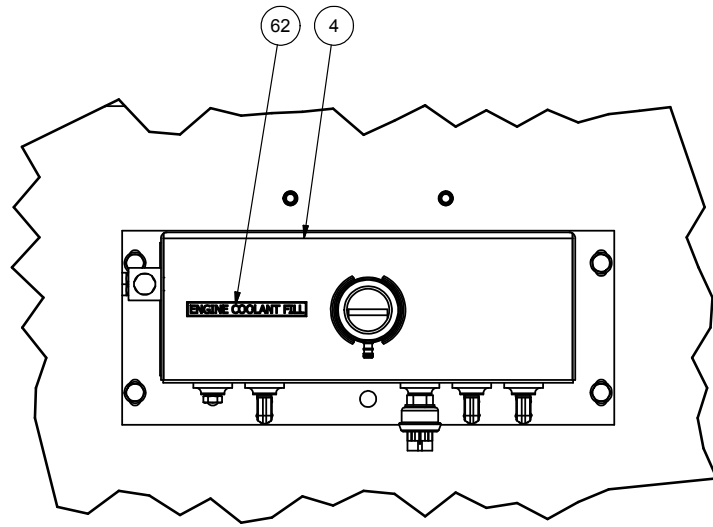
**SECTION R-R**  
*SOME COMPONENTS REMOVED FOR CLARITY*



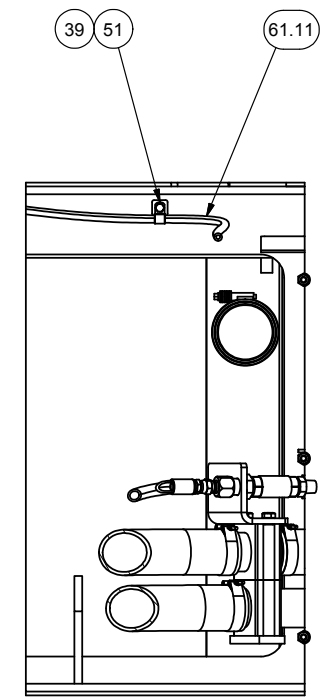
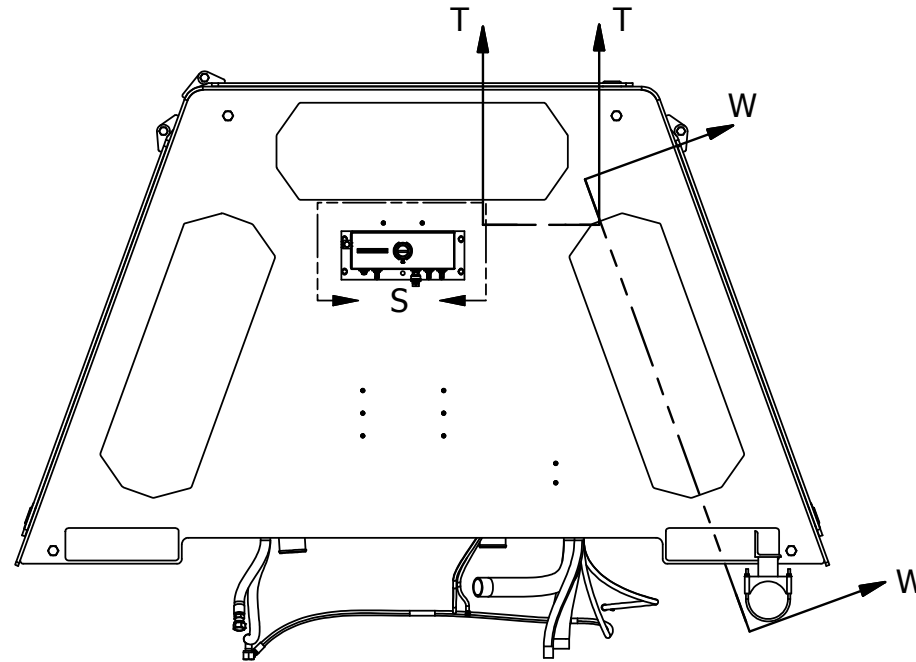
**SECTION N-N**  
*SOME COMPONENTS REMOVED FOR CLARITY*  
VIEW ROTATED 90° FOR CLARITY

7 SEE COOLING PACKAGE INSTALLATION 594272 FOR CONTINUATION OF HOSE & TUBE ROUTING.





DETAIL S

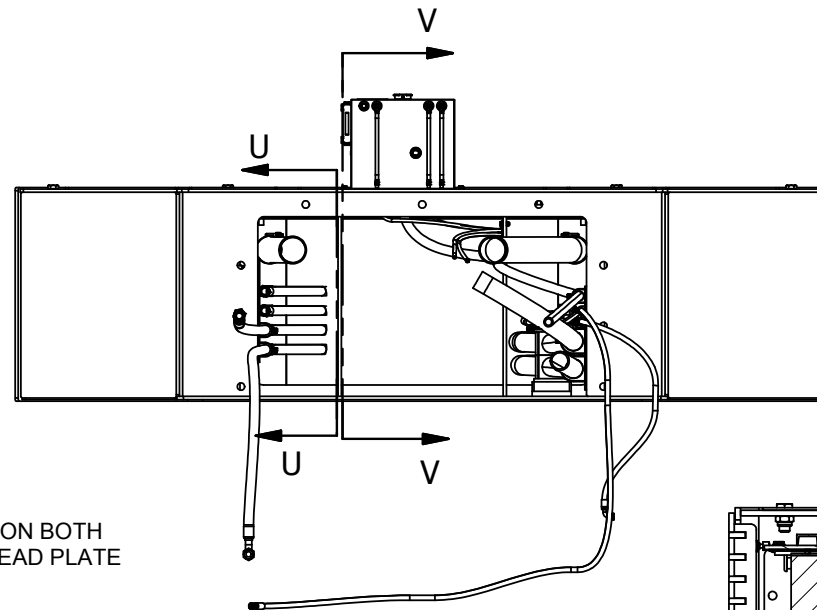


SECTION T-T

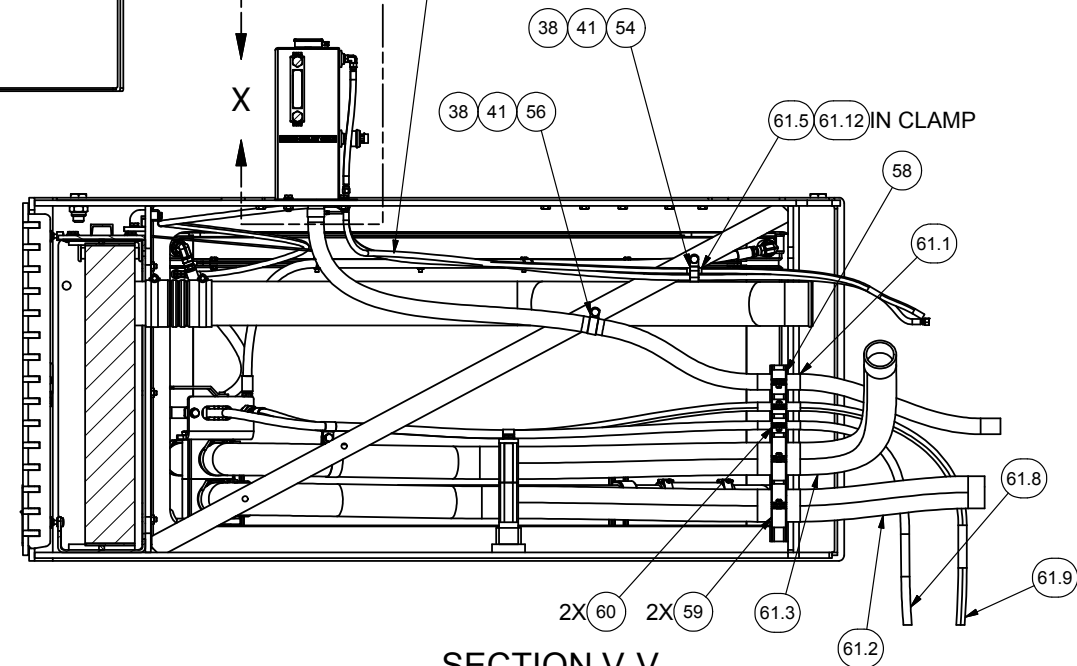


SECTION U-U

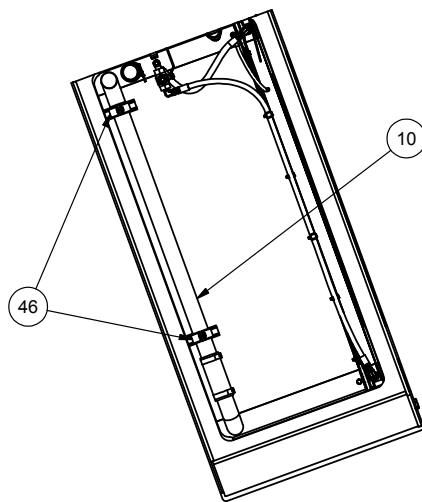
4X 27 INSTALL ITEM 27 ON BOTH  
X2 SIDES OF BULKHEAD PLATE



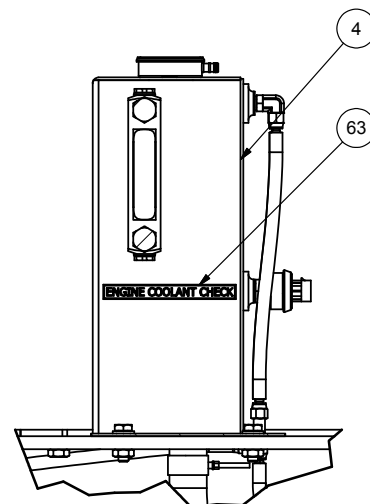
NOTE: VENT HOSES ITEMS 61.5, 61.11, & 61.12  
MUST BE ROUTED ON A CONTINUOUSLY UPWARD  
PATH FROM SOURCE TO SURGE TANK - ITEM 4  
WITH NO LOW POINTS ALONG PATH



SECTION V-V



SECTION W-W



DETAIL X