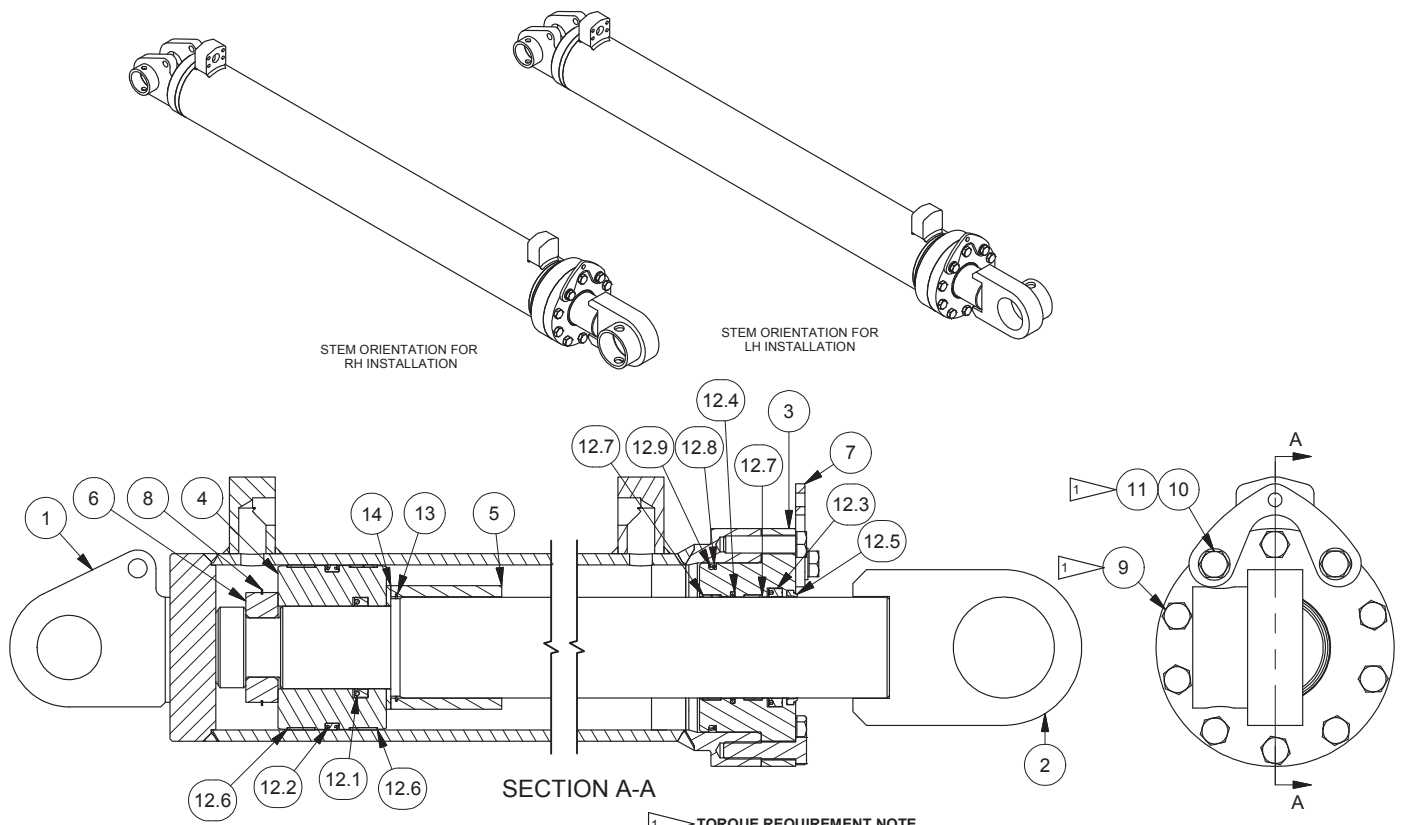


Cylinder Assembly, Hoist



TORQUE REQUIREMENT NOTE
 * TIGHTEN BOLTS TO REQUIRED TORQUE VALUE (SEE FORM 80-1057).
 * REMOVE DIRT, LOOSE SCALE, BURRS, AND PAINT FROM THE MATING SURFACES OF BOLTED JOINTS.
 * USE MEDIUM STRENGTH LOCTITE THREADLOCKER 242 (BLUE).

Item	Part No.	Qty	Description	Item	Part No.	Qty	Description
	594679		Cylinder Assembly, Hoist	12.1	Y437152.243	1	.. Seal
1	594680	1	. Barrel Weldment	12.2	69770.0900	1	.. Seal, Piston
2	594682	1	. Weldment, Stem	12.3	Y437152.284	1	.. Seal
3	590644	1	. Gland, Cylinder	12.4	69768.0550	1	.. Seal, Buffer
4	591008	1	. Piston, Cylinder	12.5	23569	1	.. Wiper Ring
5	591017	1	. Tube, Stop	12.6	70384.0900	2	.. Wear Ring, Piston
6	591013	1	. Collar, Clamp	12.7	70385.0550	2	.. Wear Ring, Rod
7	591616	1	. Plate, Lifting Eye	12.8	Y076800-446	1	.. Backup Ring
8	70738	1	. Snap Ring - Ext	12.9	Y098629-446	1	.. O-Ring
9	293730W	8	. Capscrew	13	592273	1	. Ring - Snap, Int
10	293732W	2	. Capscrew	14	592268	1	. Plate, Washer
11	296434W	2	. Hard Washer				
12	591461	1	. Kit, Packing				