

---

Carriage Assembly

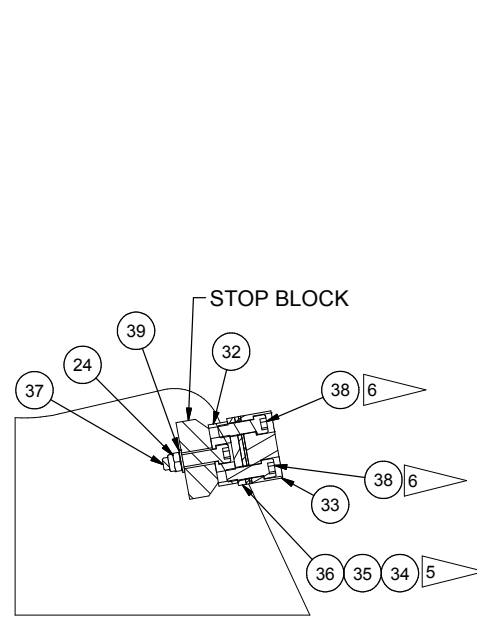
## Carriage Assembly

Item	Part No.	Qty	Description	Item	Part No.	Qty	Description
	<b>594504</b>		<b>Carriage Assembly</b>				
1	590390	2	. Tine Weldment	19	591316	4	. Plate, Shim
2	590389	1	. Weldment, Carr	20	Y19C-M30100	8	. Capscrew
3	595421	1	. Weldment, Hold Down	21	293706W	4	. Capscrew
	592210	1	. . Bushing	22	Y19C-M20150	2	. Capscrew
	523862	1	. . Bushing	23	Y19C-M1055	8	. Capscrew
5	592189	2	. Kickoff Arm Assembly	24	302405W	6	. Locknut
	523862	2	. . Bushing	25	302401W	8	. Locknut
	592210	1	. . Bushing	26	296140W	8	. Jam Nut
6	* 594498	2	. Cylinder Assembly, HD	27	575299	8	. Shim
7	* 591437	2	. Cylinder Assembly, KO	28	Y14E-M20	4	. Washer
8	592743	1	. Lock Collar	29	302403W	8	. Locknut
9	592730	2	. Bushing	30	249312	8	. Capscrew
10	590634	1	. Pin	31	593677	2	. Washer, Thrust
11	563280	4	. Pin	32	594163	4	. Stop, Base
12	590669	2	. Pin	33	594160	4	. Stop, Holddown
13	590621	2	. Pin	34	594161	4	. Shim, Holddown Stop
14	590664	1	. Pin	35	594162	4	. Shim, Hold Down Stop
15	591737	4	. Pin	36	594165	4	. Shim, Hold Down Stop
16	590886	2	. Pin	37	233640	4	. Capscrew
17	590887	2	. Pin	38	Y23C-M2060	8	. Capscrew
18	220275	4	. Cotter Pin	39	296430W	4	. Hard Washer

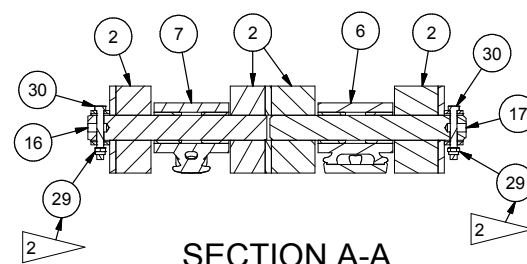
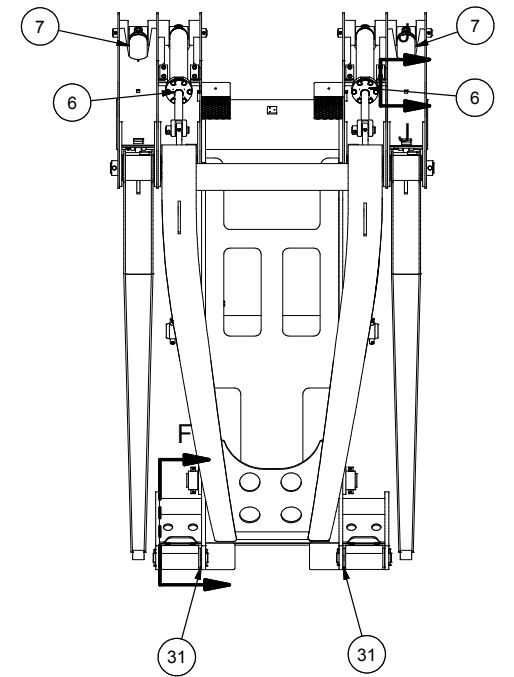
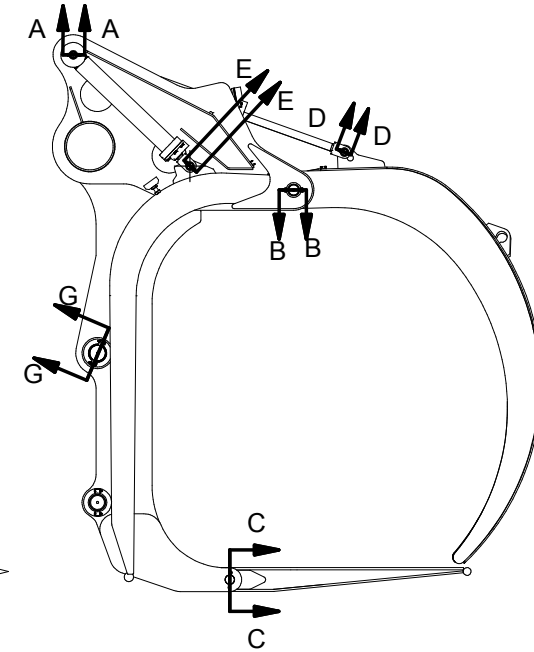
\* See Separate Coverage

**NOTES:**

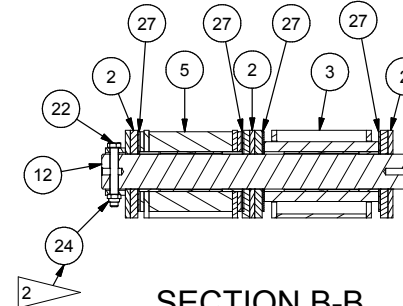
- 3) SHIM TINE TIPS TO BE LEVEL AND IN LINE WITHIN +/- 0.5"
- 4) ITEMS 34, 35 & 36 SHOULD BE USED AS REQUIRED TO SHIM HOLD DOWN STOP.
- 5) TIGHTEN BOLT UNTIL SNUG, THEN TIGHTEN ONE MORE REVOLUTION.



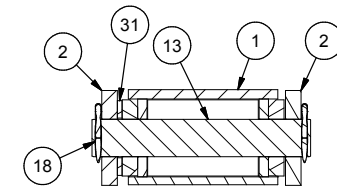
**SECTION J-J**



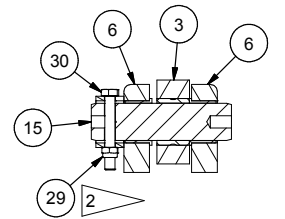
**SECTION A-A  
2 PLACES**



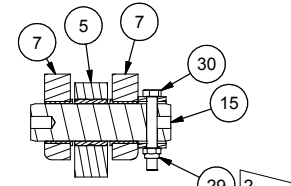
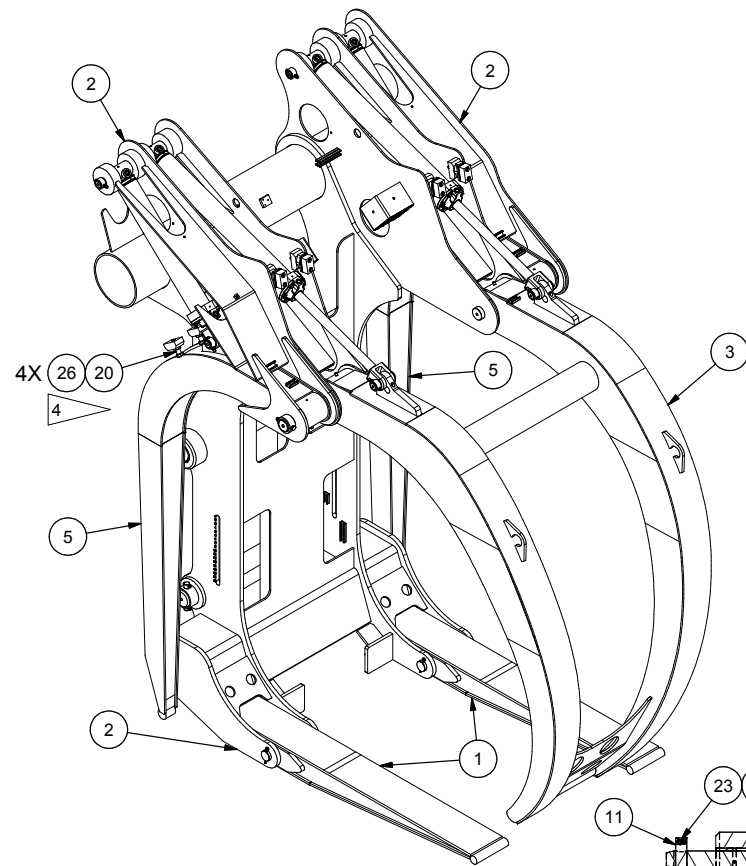
**SECTION B-B  
2 PLACES**



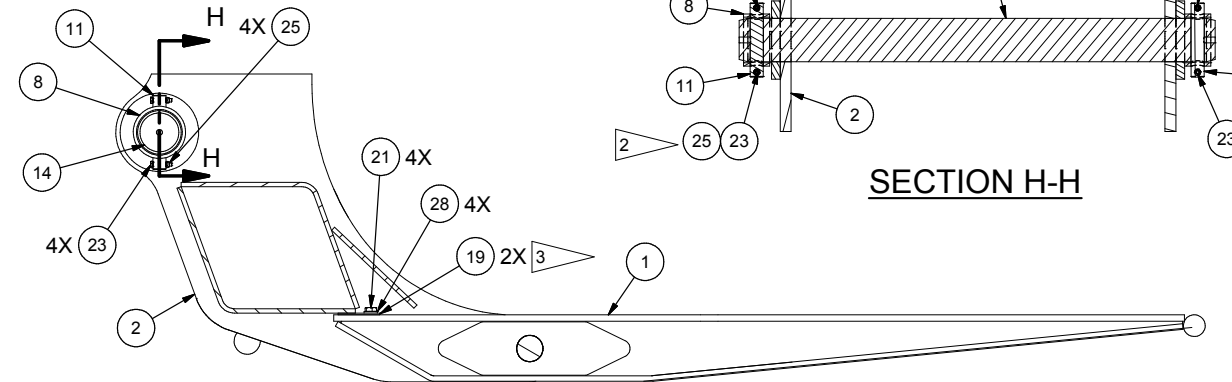
**SECTION C-C  
2 PLACES**



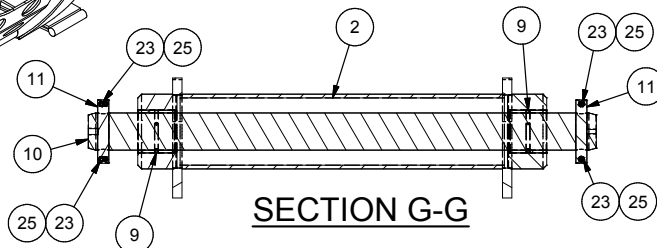
**SECTION D-D**



**SECTION E-E  
2 PLACES**



**SECTION H-H**



**SECTION G-G**

**SECTION F-F**

A-