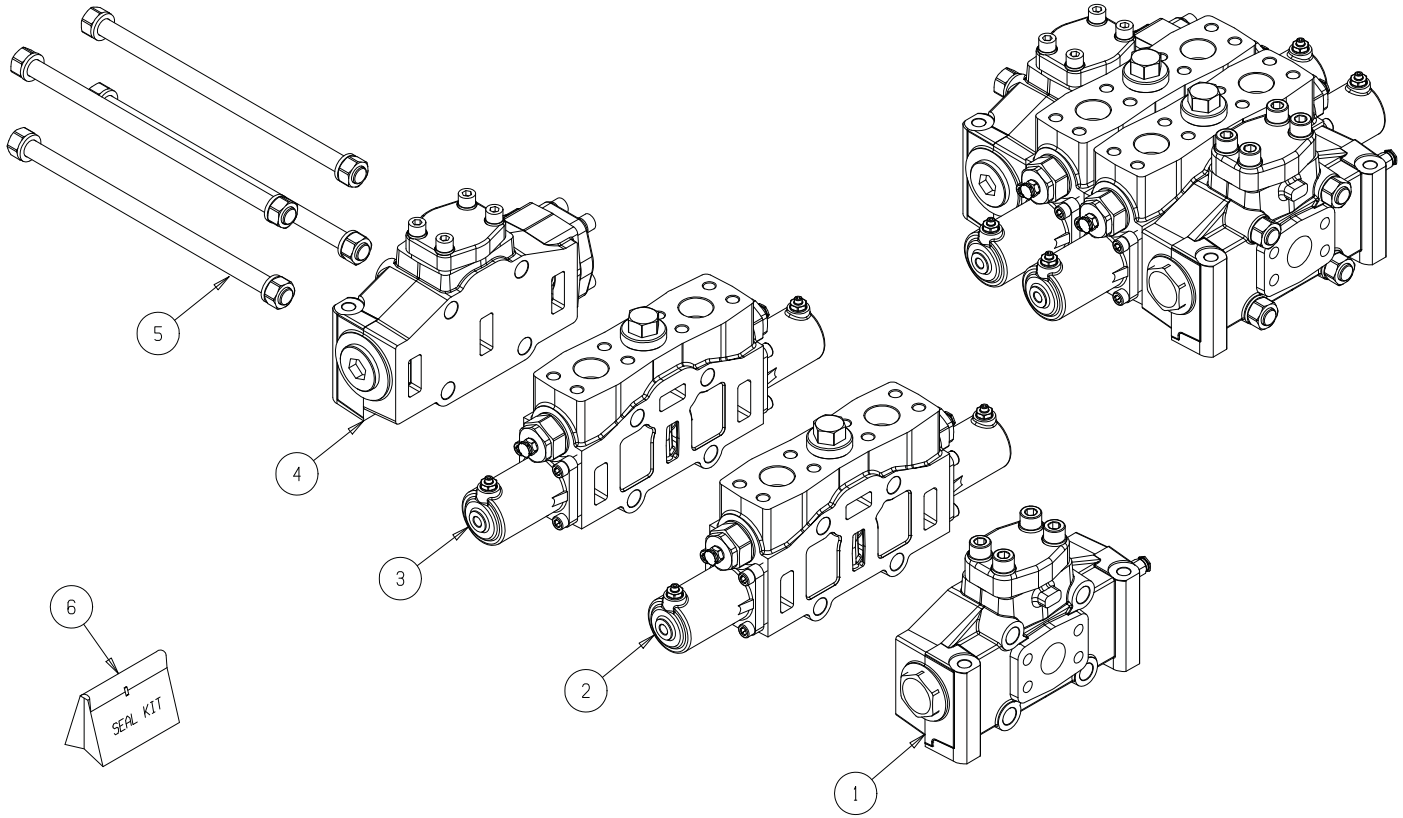
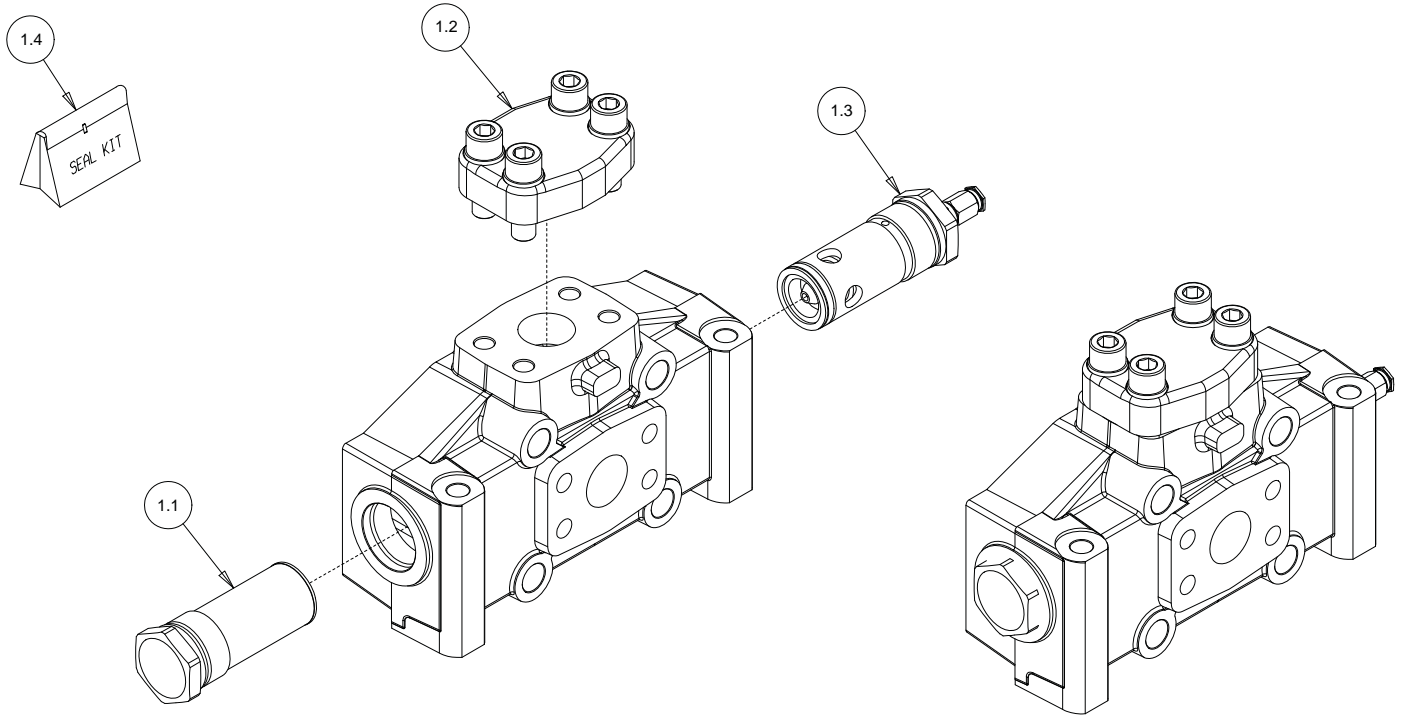

Valve, 2 Section; Hoist & Tilt

Valve, 2 Section; Hoist & Tilt



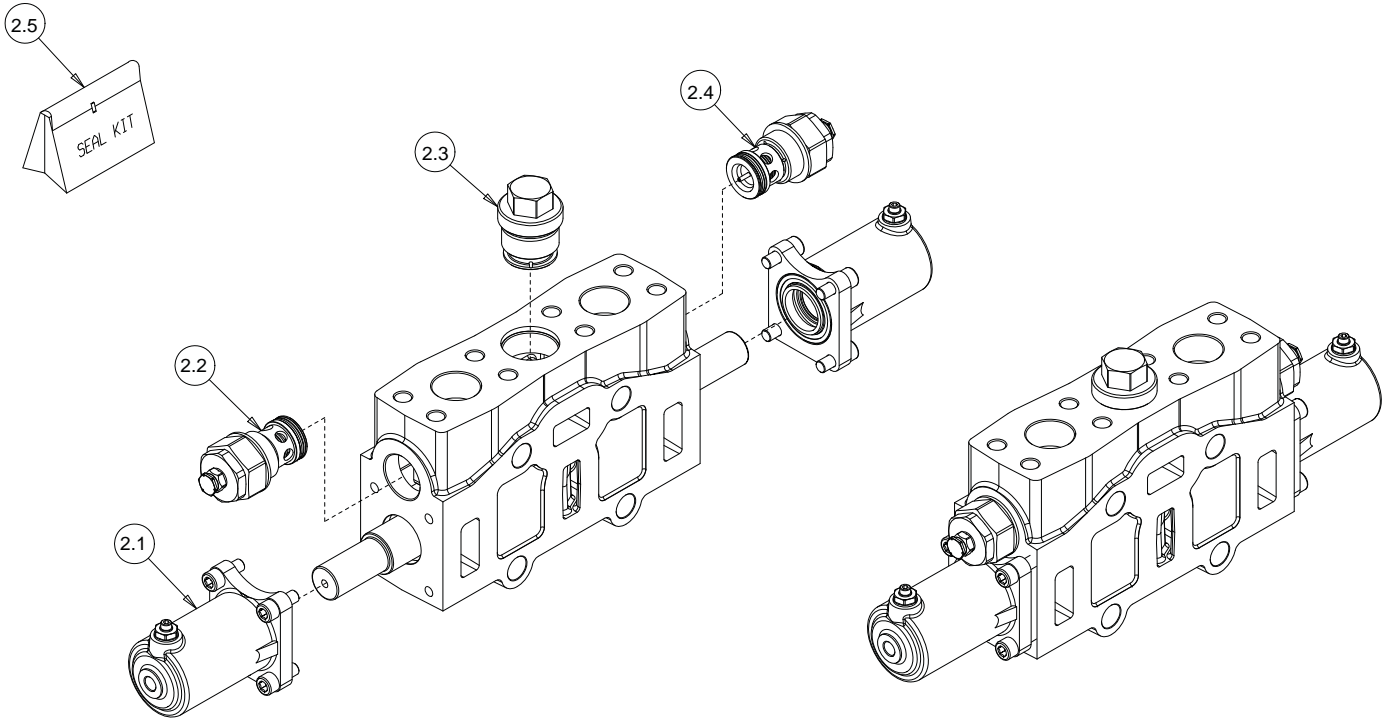
Item	Part No.	Qty	Description	Item	Part No.	Qty	Description
	594408		Valve, 2 Section				
1	596312	1	. Section, Inlet (see page 3)				
2	596313	1	. Section, Hoist (see page 4)				
3	596314	1	. Section, Tilt (see page 5)				
4	596315	1	. Section, Outlet (see page 6)				
5	593499	1	. Kit, Tie Rod; W/Nuts & Washers				
6	596316		Kit, Seal				

Section, Inlet



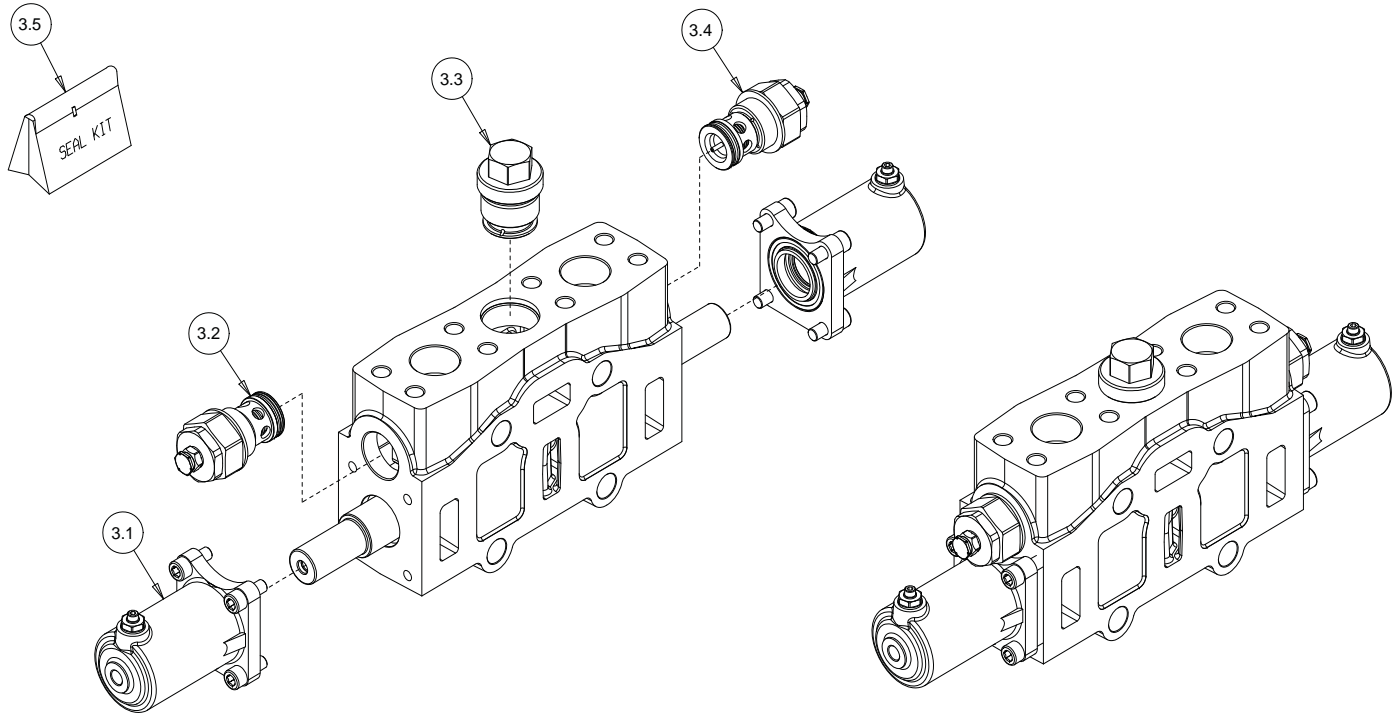
Item	Part No.	Qty	Description	Item	Part No.	Qty	Description
	596312	1	Section, Inlet				
1.1	593507	1	. Plug				
1.2	593497	1	. Cap				
1.3	593477	1	. Relief Valve				
1.4	593512	1	Kit, Seal				

Section, Hoist



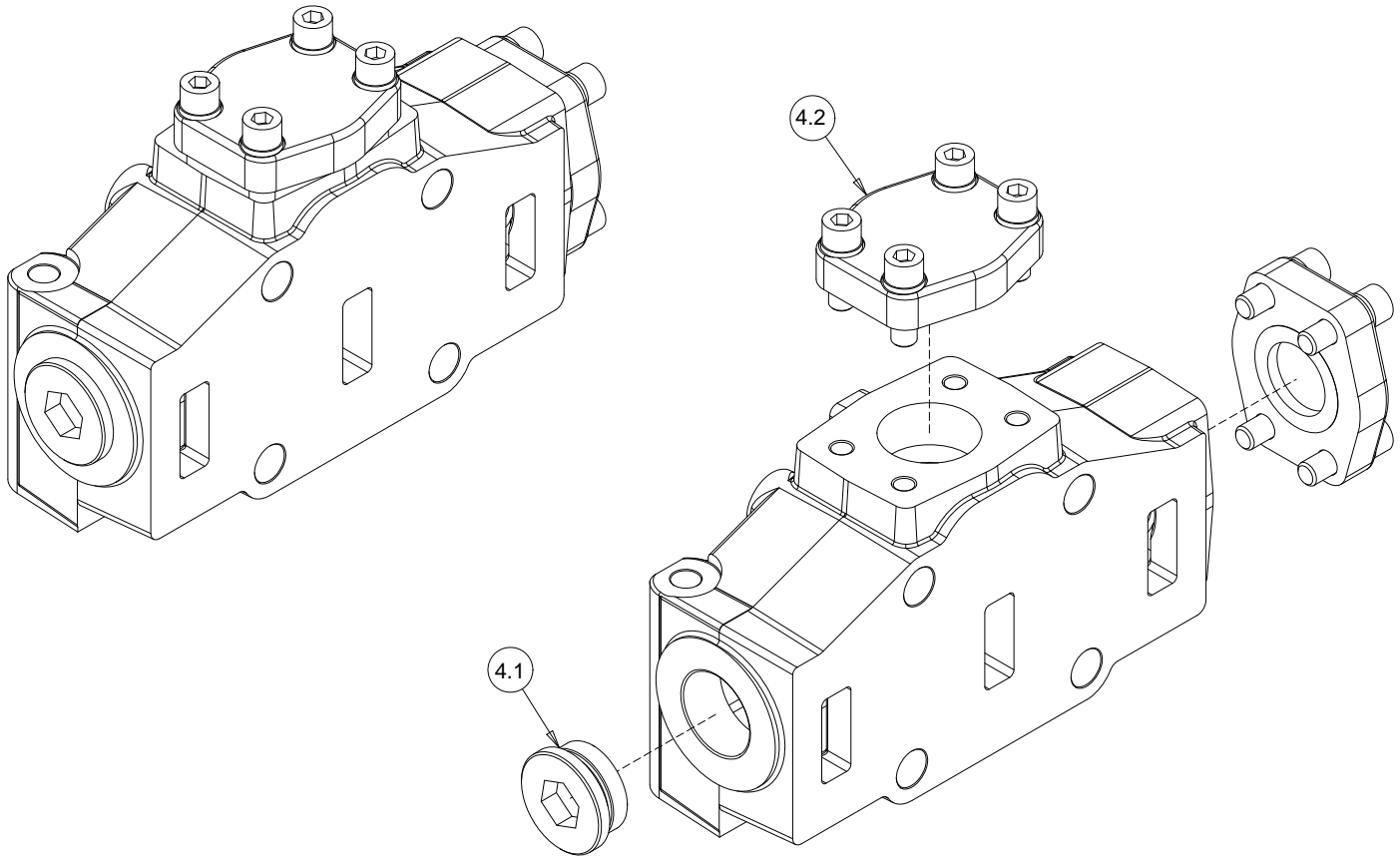
Item	Part No.	Qty	Description	Item	Part No.	Qty	Description
	596313		Section, Hoist				
2.1	593503	1	. Spool, Return				
2.2	593482	1	. Spool Valve				
2.3	593501	1	. Valve, Check				
2.4	593493	1	. Valve				
2.5	596318		Kit, Seal				

Section, Tilt



Item	Part No.	Qty	Description	Item	Part No.	Qty	Description
	596314		Section, Tilt				
3.1	593503	1	. Spool, Return				
3.2	593489	1	. Spool Valve				
3.3	593501	1	. Valve, Check				
3.4	596319	1	. Valve				
3.5	596318	1	Kit, Seal				

Section, Outlet



Item	Part No.	Qty	Description	Item	Part No.	Qty	Description
	596315		Section, Outlet				
4.1	593495	1	. Plug				
4.2	596317	2	. Cap				