

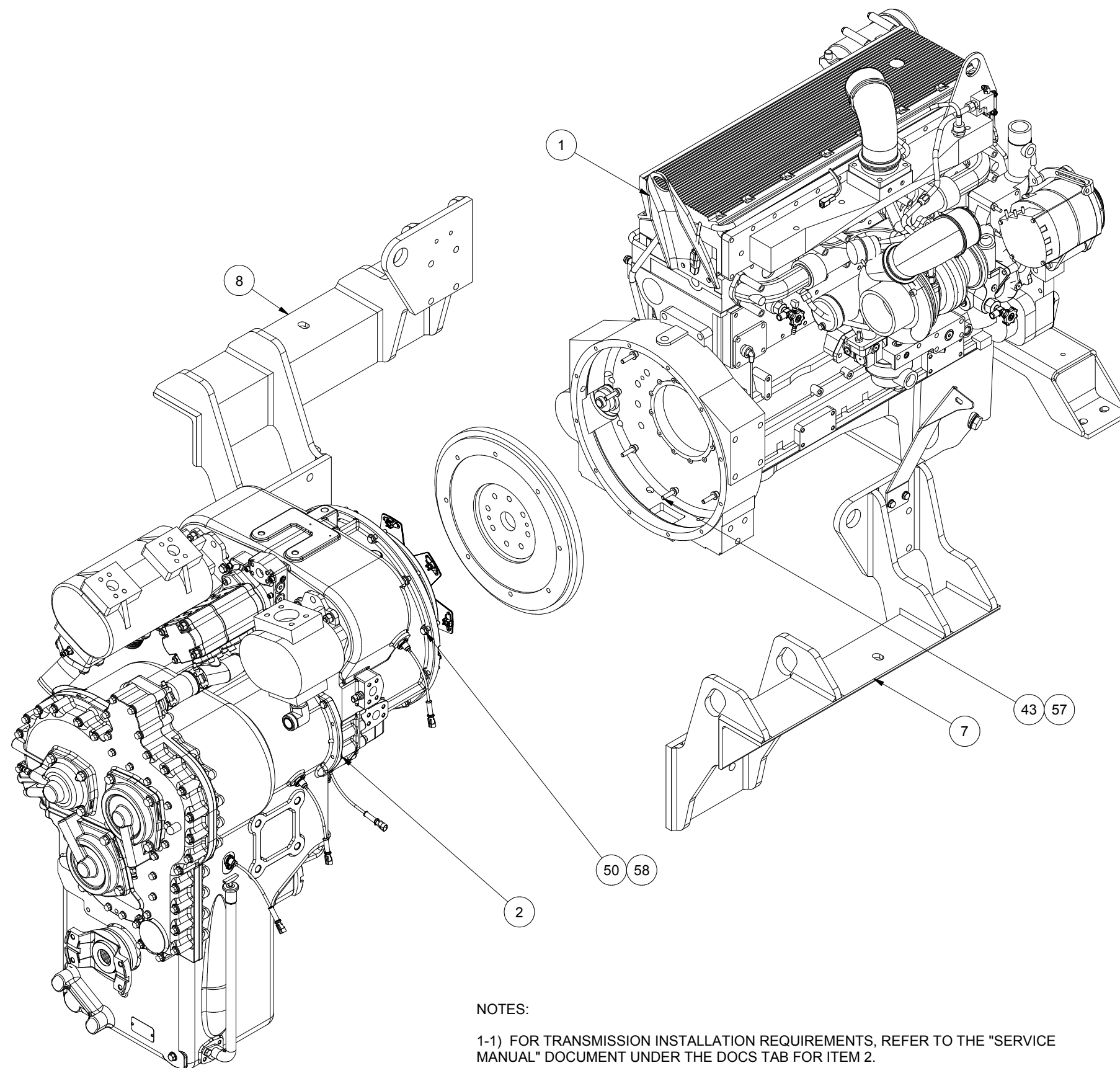
---

Power Unit Assembly

## Power Unit Assembly

Item	Part No.	Qty	Description	Item	Part No.	Qty	Description
	<b>594397</b>		<b>Power Unit Assembly</b>				
1	* 590935	1	. Engine	51	293647W	4	. Capscrew
2	* 594398	1	. Transmission	52	248986	2	. Capscrew
3	590705	1	. Pump	53	591640	2	. Capscrew
4	591343	1	. Pump, Hydraulic	54	Y19C-M2055	8	. Capscrew
5	594618	1	. Pump, Tandem	55	296426W	8	. Hard Washer
6	591769	1	. Compressor, A/C	56	296418W	16	. Hard Washer
7	595633	1	. Weldment, Mounting - LH	57	296420W	16	. Hard Washer
8	595634	1	. Weldment, Mounting - RH	58	296422W	22	. Hard Washer
9	591661	1	. Mounting Weldment, Rear	59	296428W	4	. Hard Washer
10	592212	1	. Bracket Weldment, Rad Supply	60	296430W	8	. Hard Washer
11	592153	1	. Bracket, Dipstick	61	302400W	5	. Locknut
12	592154	1	. Bracket, Dipstick	62	302401W	3	. Locknut
13	592155	1	. Bracket, Dipstick	63	591641	2	. Nut, Esna
14	* 591939	1	. Housing Assembly, Dipstick	64	252365	1	. Fitting
15	592147	1	. Housing Weldment	65	592770	1	. Fitting
16	592149	1	. Dipstick Weldment	66	246905	1	. Sensor, Press Transducer
17	591651	2	. Vibration Isolator, Rear	67	27360	1	. Gasket
18	202889	1	. Switch, Oil Press	70	592809	2	. Fitting
19	505499	2	. Gasket	71	592775	1	. Harness
20	203274	2	. Shutoff Valve	72	592382	4	. Stud
21	209578	3	. Clamp	73	292656W	4	. Nut
22	R2528352	1	. Clip, Insul	74	253920	2	. Spacer, O-Ring
23	591417	5	. Kit, Split Flange	75	203523	4	. O-Ring
24	591950	2	. Kit, Split Flange	76	209539	4	. Clamp Half
25	11759	1	. Kit, Split Flange	77	R14040	3	. Coupler, Male
	203443	1	. O-Ring	78	209512	3	. Fitting
26	11740	3	. Kit, Split Flange	79	221771W	12	. Washer
	203446	1	. O-Ring	80	R13811083	8	. Capscrew
27	R833270	1	. Fitting	81	593455	1	. Bracket, Support
28	209500	1	. Fitting	82	593645	1	. Belt, Serpentine
30	209413	1	. Fitting	84	242640	1	. Spacer, O-Ring
31	231808	1	. Fitting	85	203516	2	. O-Ring
32	221140	1	. Fitting	86	209537	2	. Clamp Half
33	28574	1	. Fitting	87	R13811080	4	. Capscrew
34	257275	1	. Fitting	88	2307625W	3	. Coupler - Male, Quick
35	209791	1	. Fitting	89	593818	1	. Fitting
36	211693	1	. Fitting	90	R833200	1	. Fitting
37	591948	1	. Fitting	91	593902	1	. Plate, Mounting
38	209505	1	. Fitting	92	593904	1	. Plate, Spacer
39	18522	1	. Fitting	93	302402W	1	. Locknut
40	210011	1	. Fitting	94	2305715W	1	. Washer
41	211705	1	. Fitting	95	Y09C-M1225	1	. Capscrew
42	Y19C-M1650	8	. Capscrew	96	R14038	2	. Coupler
43	591521	8	. Capscrew	97	593908	3	. Coupler, Male
44	R13809366	2	. Capscrew				
45	251199	1	. Capscrew				
46	Y09C-M08100	4	. Capscrew				
47	236805	3	. Capscrew				
48	293628W	1	. Capscrew				
49	293631W	2	. Capscrew				
50	R13811213	12	. Capscrew				

\* See Separate Coverage

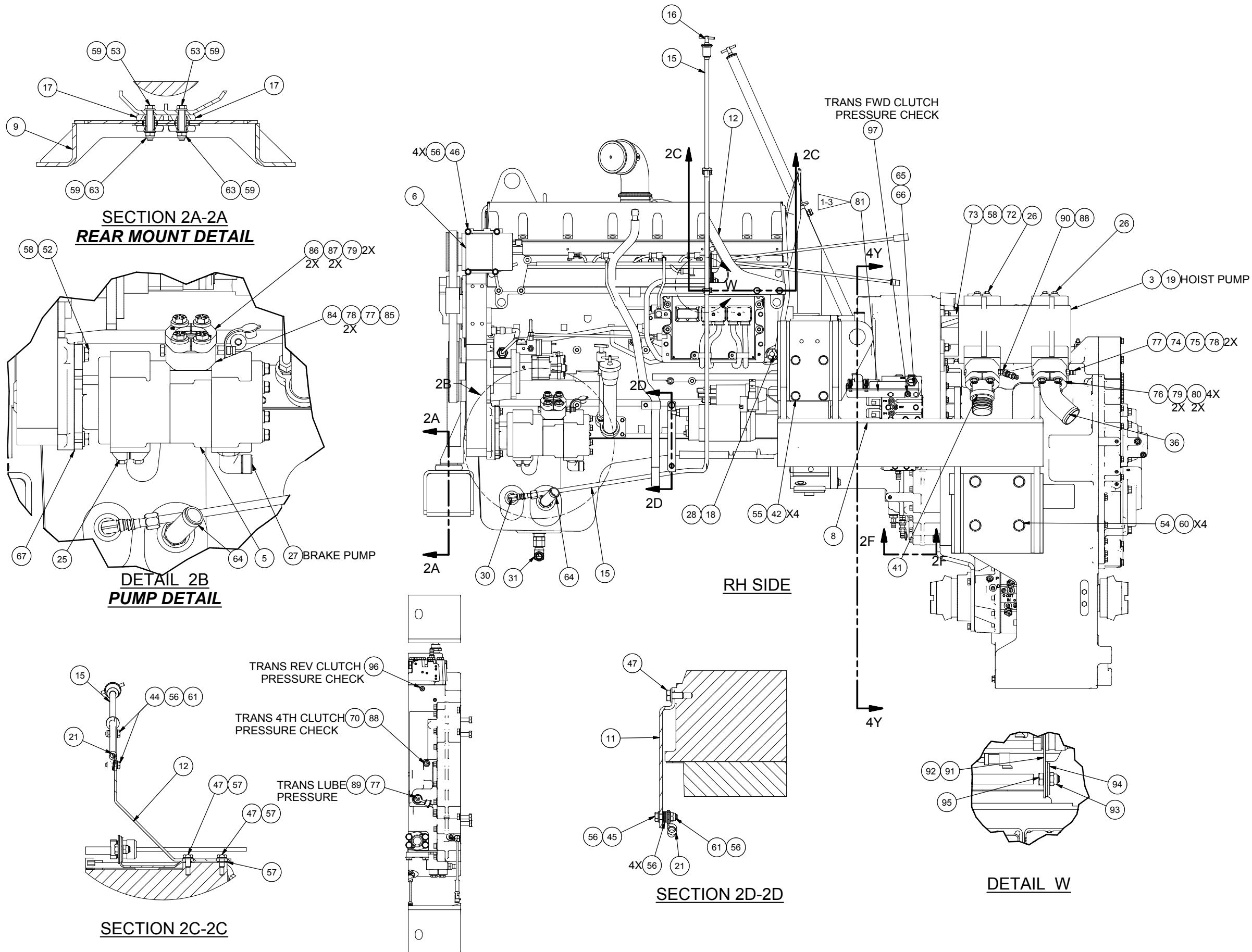


NOTES:

1-1) FOR TRANSMISSION INSTALLATION REQUIREMENTS, REFER TO THE "SERVICE MANUAL" DOCUMENT UNDER THE DOCS TAB FOR ITEM 2.

1-2) OEM WIRE HARNESS NOT SHOWN. REMOVE 31 PIN CONNECTOR FROM MOUNTING BRACKET, AND REMOVE BRACKET WITH SERVICE CONNECTOR. SECURE NEW BRACKET AND MOUNT 31 PIN CONNECTOR TO NEW BRACKET.

1-3) REPLACE EXISTING COIL SUPPORT BRACKET WITH NEW BRACKET USING EXISTING HARDWARE.



**SECTION 2A-2A  
REAR MOUNT DETAIL**

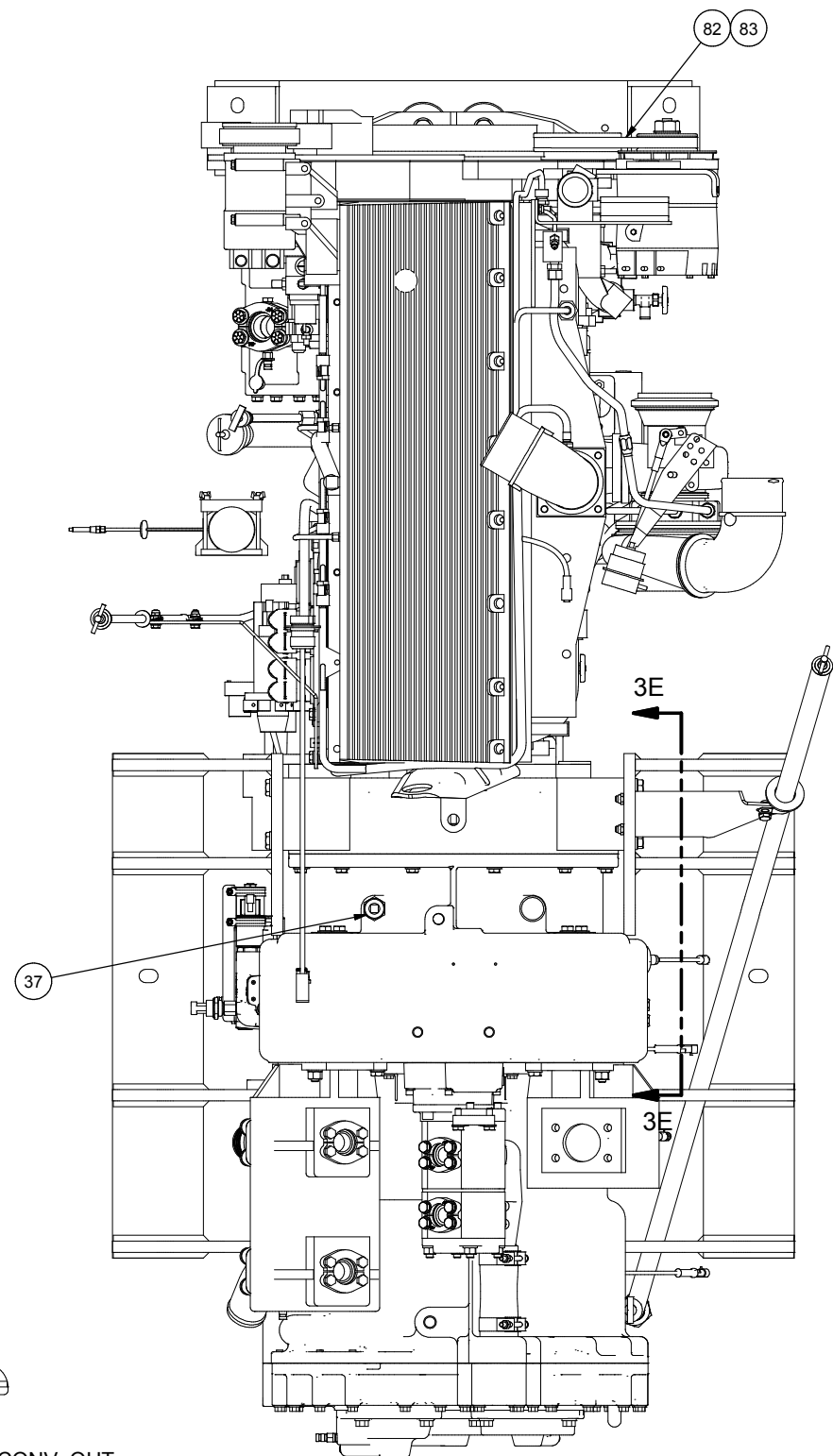
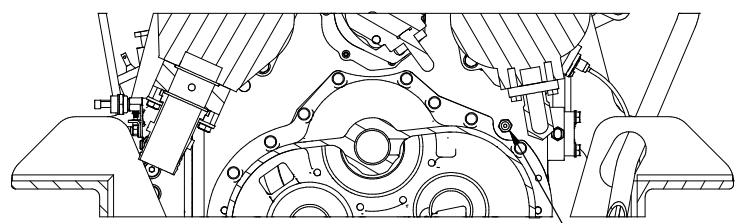
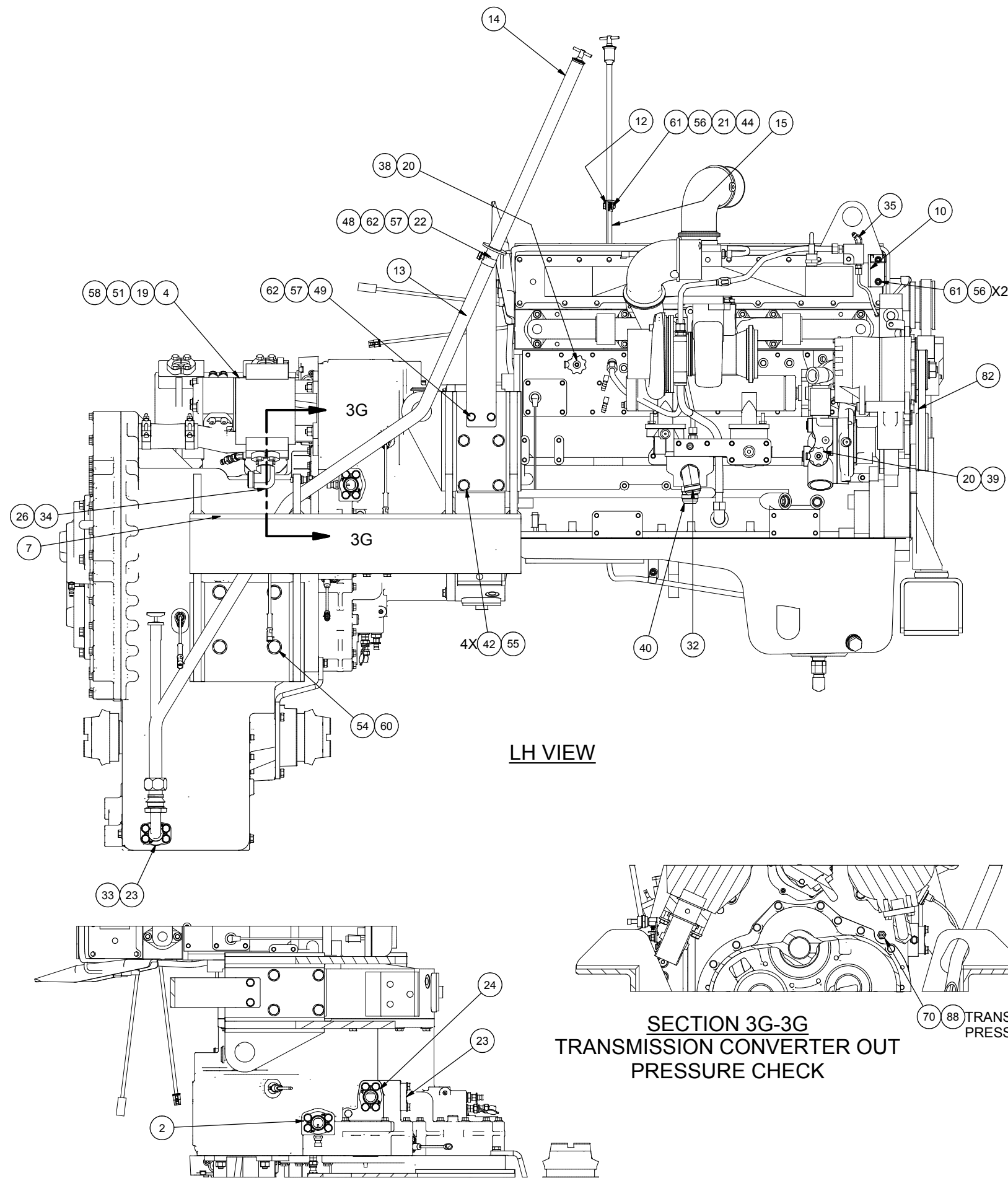
**DETAIL 2B  
PUMP DETAIL**

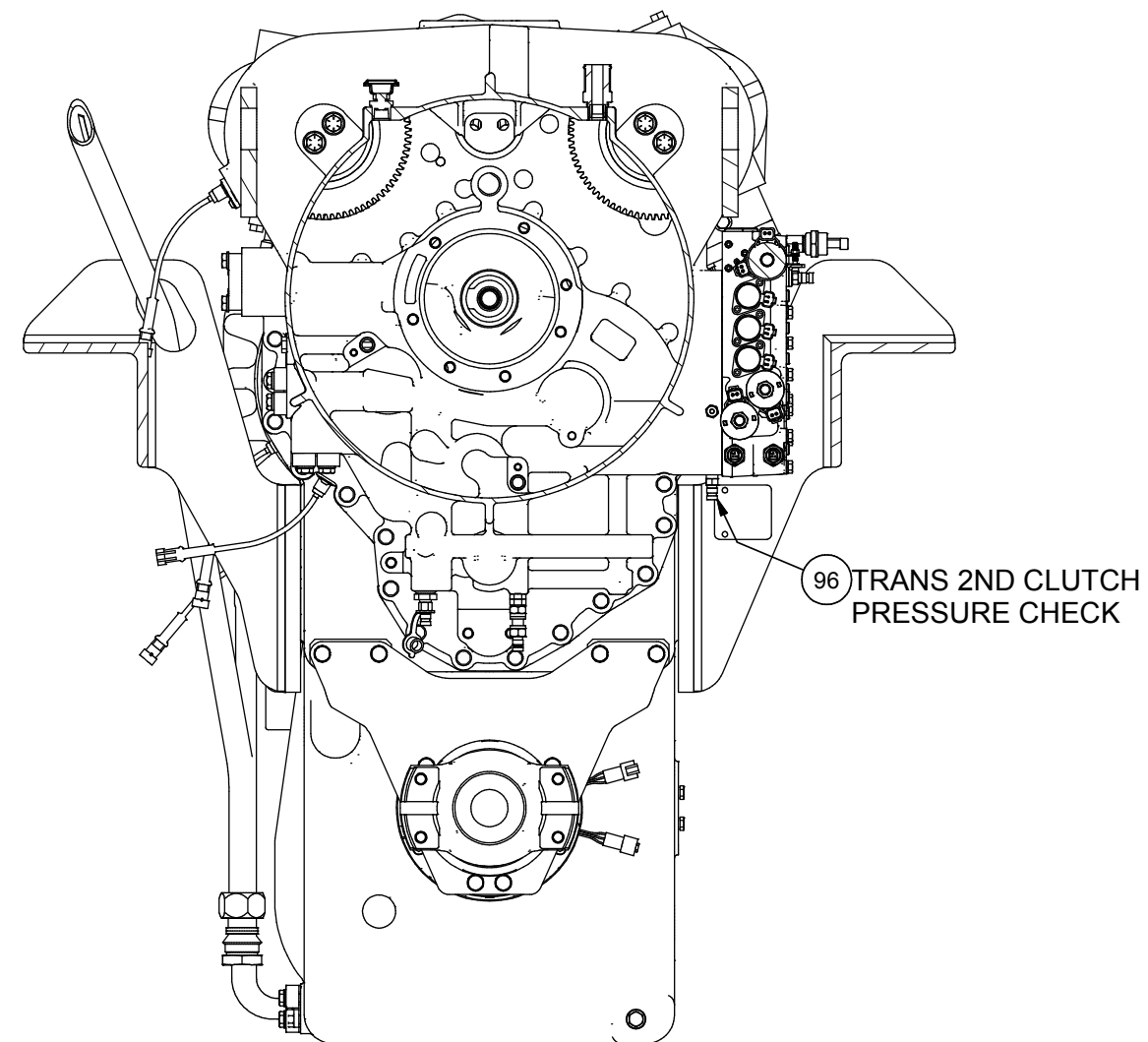
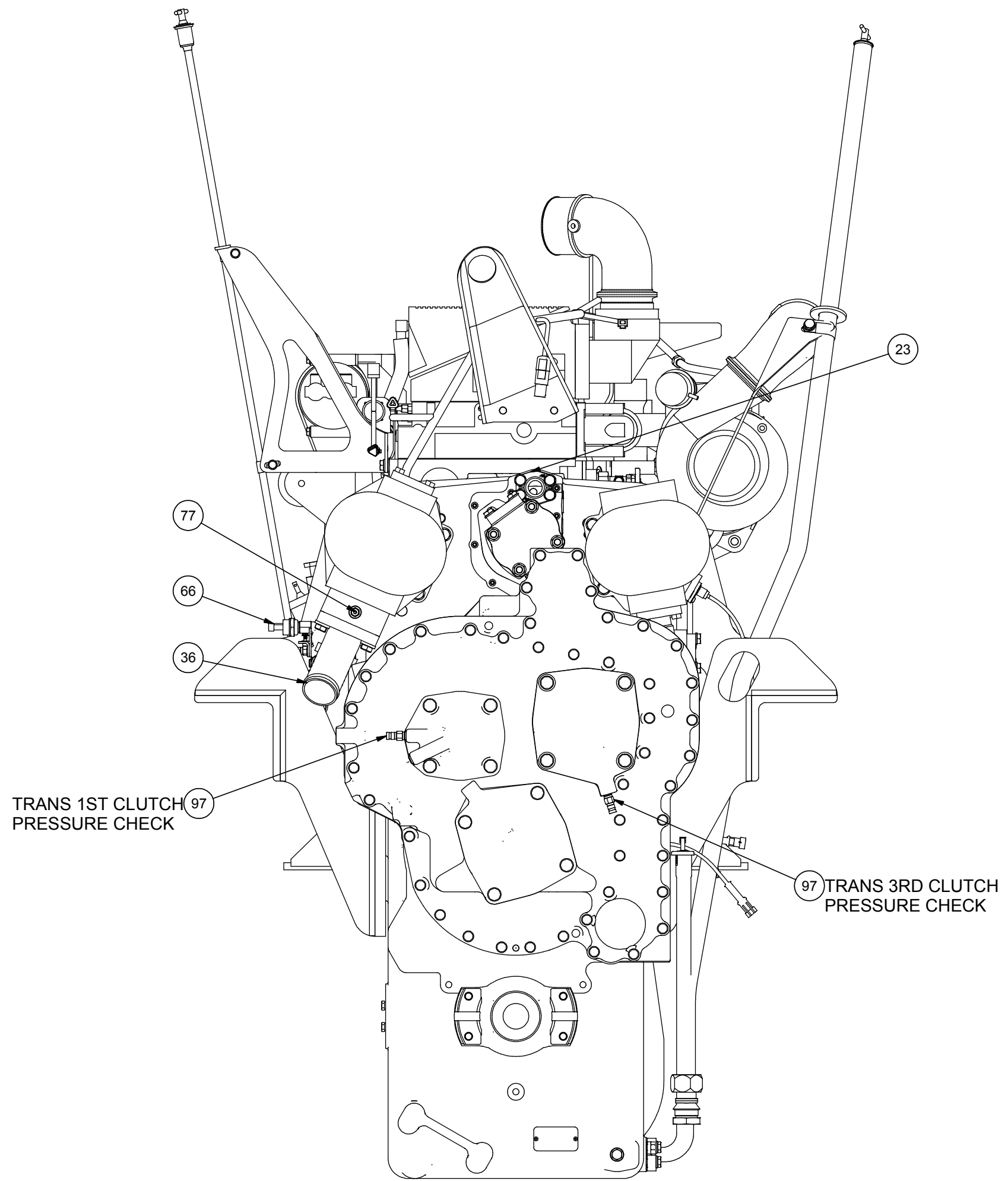
**SECTION 2C-2C**

**SECTION 2D-2D**

**DETAIL W**

**SECTION 2F-2F  
TRANSMISSION LUBE PRESSURE CHECK**





SECTION 4Y-4Y