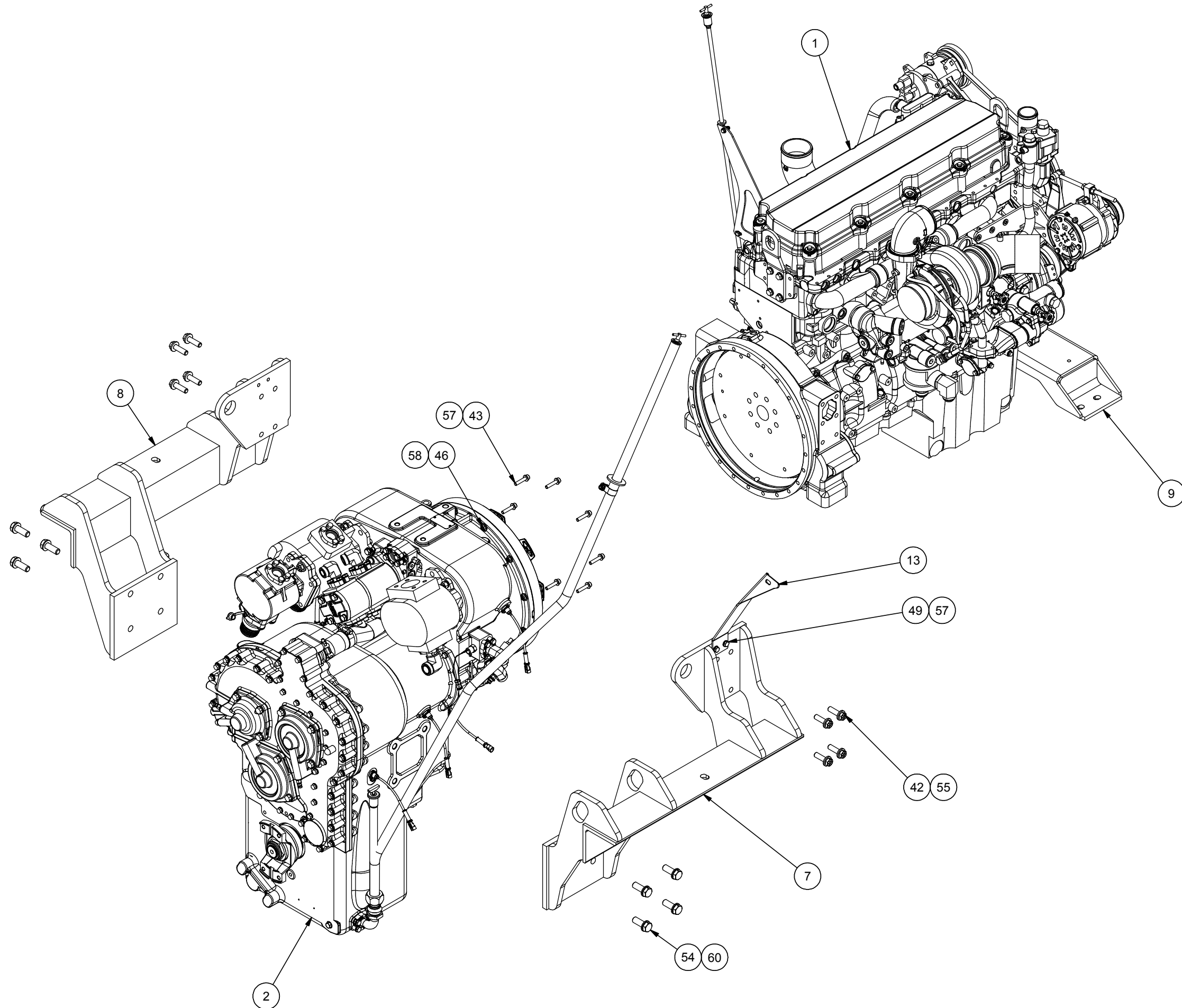
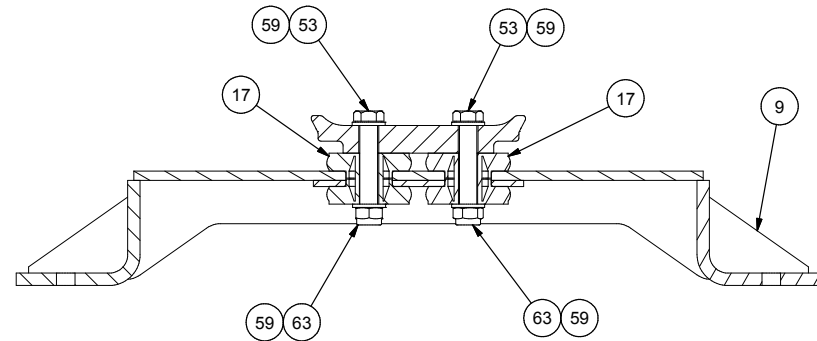

Assembly, Power Unit

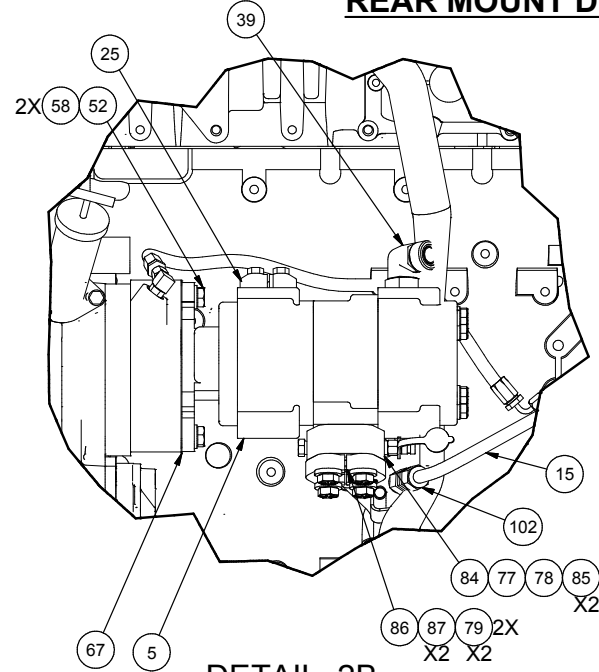
Assembly, Power Unit

Item	Part No.	Qty	Description	Item	Part No.	Qty	Description
	594364		Assembly, Power Unit				
1	* 594366	1	. Engine	65	592770	1	. Fitting
2	* 594400	1	. Transmission	67	27360	1	. Gasket
3	594513	1	. Pump, Hydraulic	68	R833253	2	. Fitting
4	591343	1	. Pump, Hydraulic	69	592807	1	. Fitting
5	595962	1	. Pump, Tandem	70	592809	4	. Fitting
6	595961	1	. Fitting	72	592382	4	. Stud
7	594367	1	. Weldment, Mounting - LH	73	292656W	4	. Nut
8	594368	1	. Weldment, Mounting - RH	74	253920	2	. Spacer, O-Ring
9	594369	1	. Weldment, Mounting - Rear	75	203523	4	. O-Ring
10	203425	1	. O-Ring	76	209539	4	. Clamp Half
11	595344	1	. Bracket, Dipstick	77	R14040	5	. Coupler, Male
12	595345	1	. Plate, Bracket	78	209512	3	. Fitting
13	594374	1	. Bracket, Dipstick	79	221771W	12	. Washer
14	* 591939	1	. Housing Assembly, Dipstick	80	R13811083	8	. Capscrew
15	594375	1	. Weldment, Dipstick Housing	81	593455	1	. Bracket, Support
16	594376	1	. Weldment, Dipstick	84	242640	1	. Spacer, O-Ring
17	591651	2	. Vibration Isolator, Rear	85	203516	2	. O-Ring
18	202889	1	. Switch, Oil Press	86	209537	2	. Clamp Half
19	505499	2	. Gasket	87	R13811080	4	. Capscrew
20	203274	2	. Shutoff Valve	88	2307625W	3	. Coupler
21	209578	3	. Clamp	89	593818	1	. Fitting
22	R2528352	1	. Clip, Insul	90	R833200	1	. Fitting
23	591417	5	. Kit, Split Flange	96	R14038	2	. Coupler
24	591950	2	. Kit, Split Flange	97	593908	3	. Coupler
25	11759	1	. Kit, Split Flange	98	589964	1	. Elbow
	203443	1	. . O-Ring	99	225566	1	. Fitting
26	11740	3	. Kit, Split Flange	101	592426	2	. Fitting
	203446	1	. . O-Ring	102	243585	1	. Fitting
27	243444	1	. Sender, Aux Temp	103	230101	1	. Valve Body
28	596413	1	. , Fitting	104	256262	1	. Valve
29	212762	1	. Fitting		254539	1	. . Seal Kit
30	215384	1	. Fitting	105	R13813291	2	. Capscrew
31	593820	1	. Fitting ,	106	R833103	1	. Fitting
32	243443	1	. Sender, Aux Press	107	595597	1	. Kit, Hose
33	28574	1	. Fitting	107.1	595594	1	. . Hose Assembly
34	257275	1	. Fitting	107.2	595595	1	. . Hose Assembly
35	R830008	1	. Fitting	107.3	595596	1	. . Hose Assembly
36	222886	1	. Fitting	108	209482	1	. Fitting
37	591948	1	. Fitting	109	209488	1	. Fitting
38	211281	2	. Fitting	110	223545	1	. Fitting
39	R833270	1	. Fitting				
41	211705	2	. Fitting				* See Separate Coverage
42	Y17C-1036	8	. Capscrew				
43	596001	8	. Capscrew				
44	R13809366	2	. Capscrew				
45	251199	1	. Capscrew				
46	R13811059	12	. Capscrew				
47	236805	3	. Capscrew				
48	293628W	1	. Capscrew				
49	293631W	2	. Capscrew				
51	293647W	4	. Capscrew				
52	248986	2	. Capscrew				
53	591640	2	. Capscrew				
54	Y19C-M2055	8	. Capscrew				
55	221775W	8	. Washer				
56	296418W	8	. Hard Washer				
57	296420W	15	. Hard Washer				
58	296422W	22	. Hard Washer				
59	296428W	4	. Hard Washer				
60	296430W	8	. Hard Washer				
61	302400W	3	. Locknut				
62	302401W	3	. Locknut				
63	591641	2	. Nut				
64	252365	1	. Fitting				

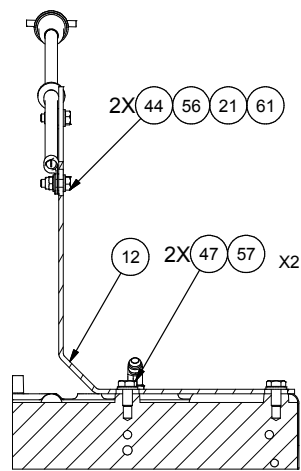




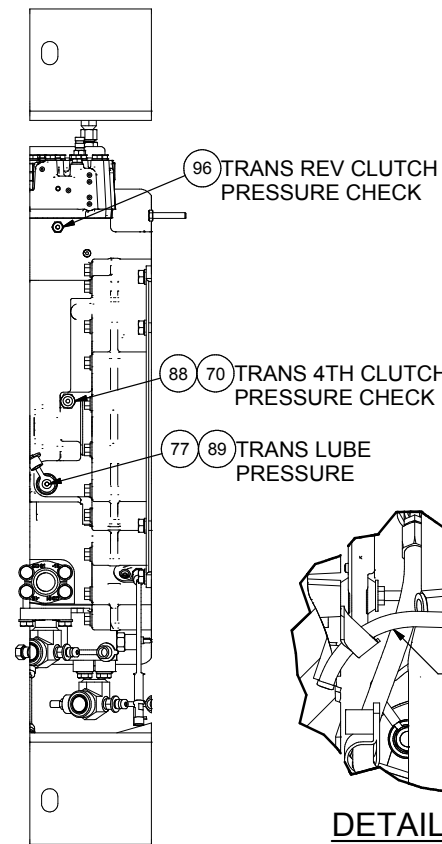
**SECTION 2A-2A
REAR MOUNT DETAIL**



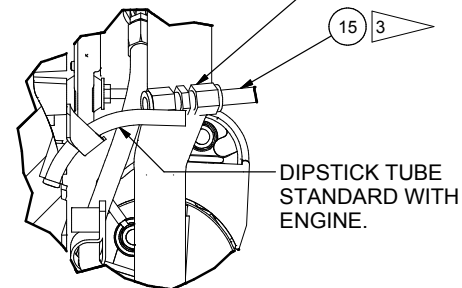
**DETAIL 2B
PUMP DETAIL**



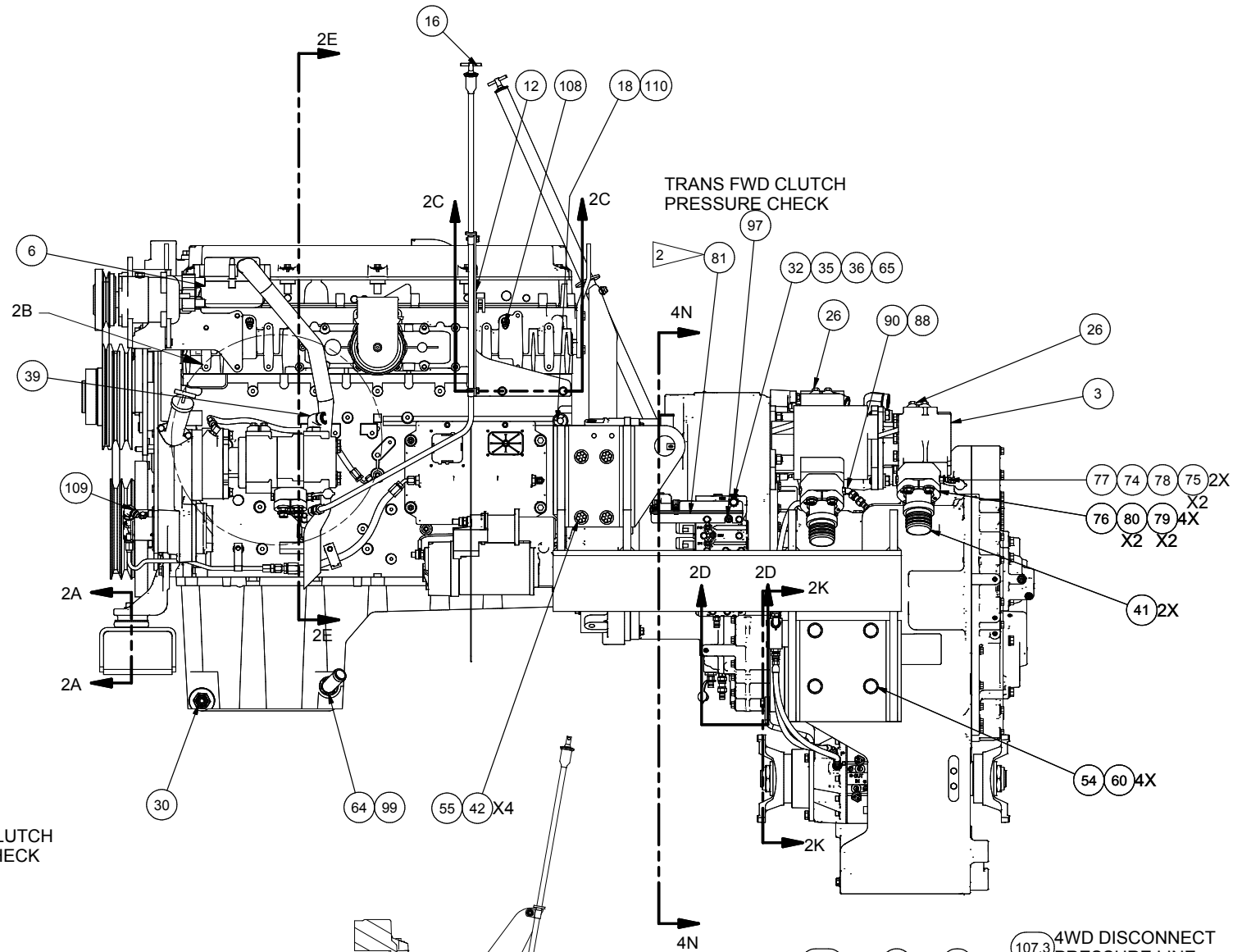
SECTION 2C-2C



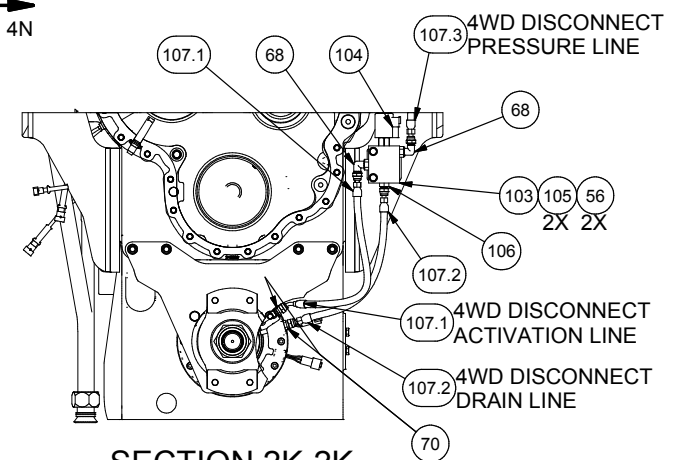
**SECTION 2D-2D
TRANSMISSION LUBE PRESSURE CHECK**



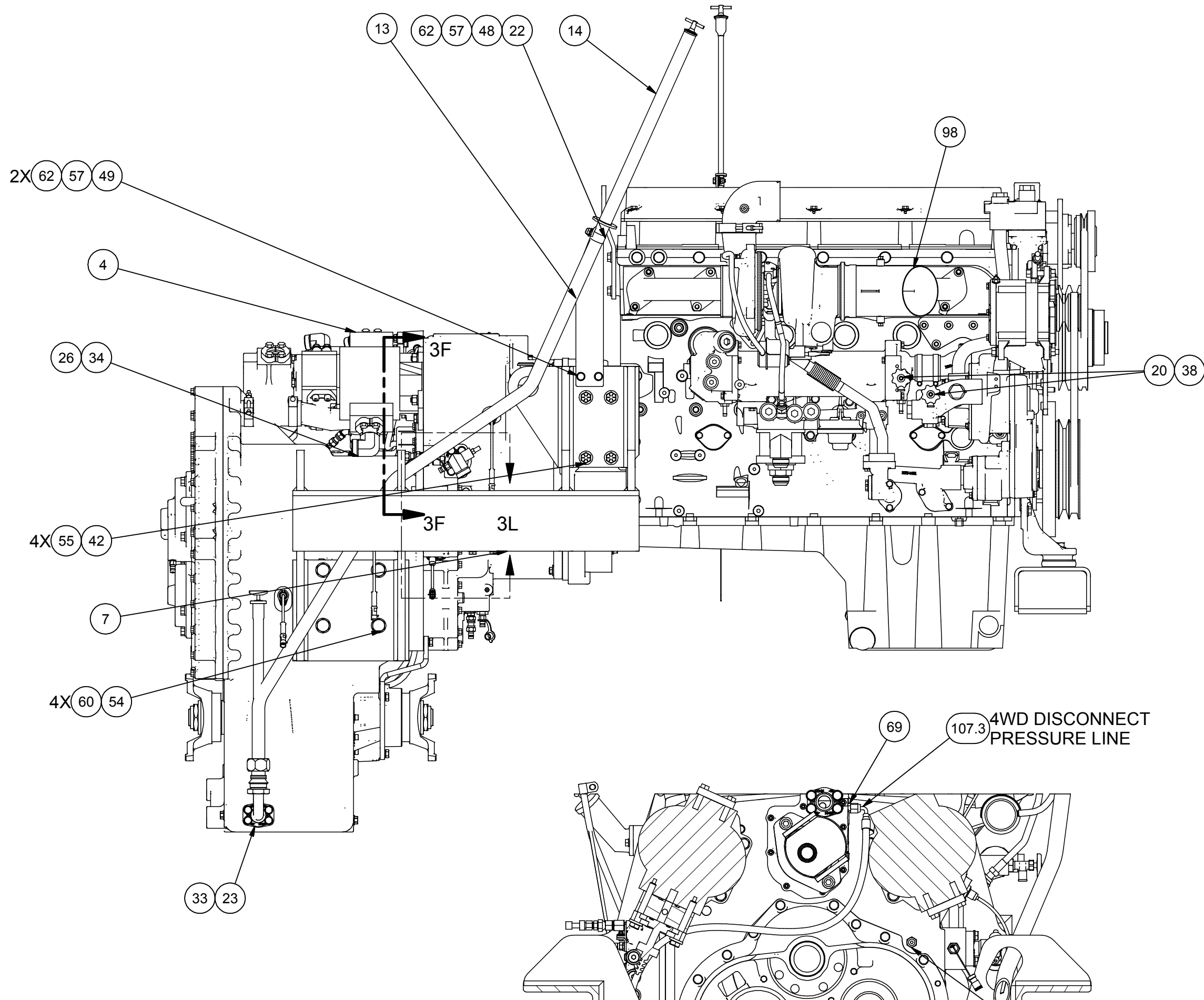
DETAIL 2P

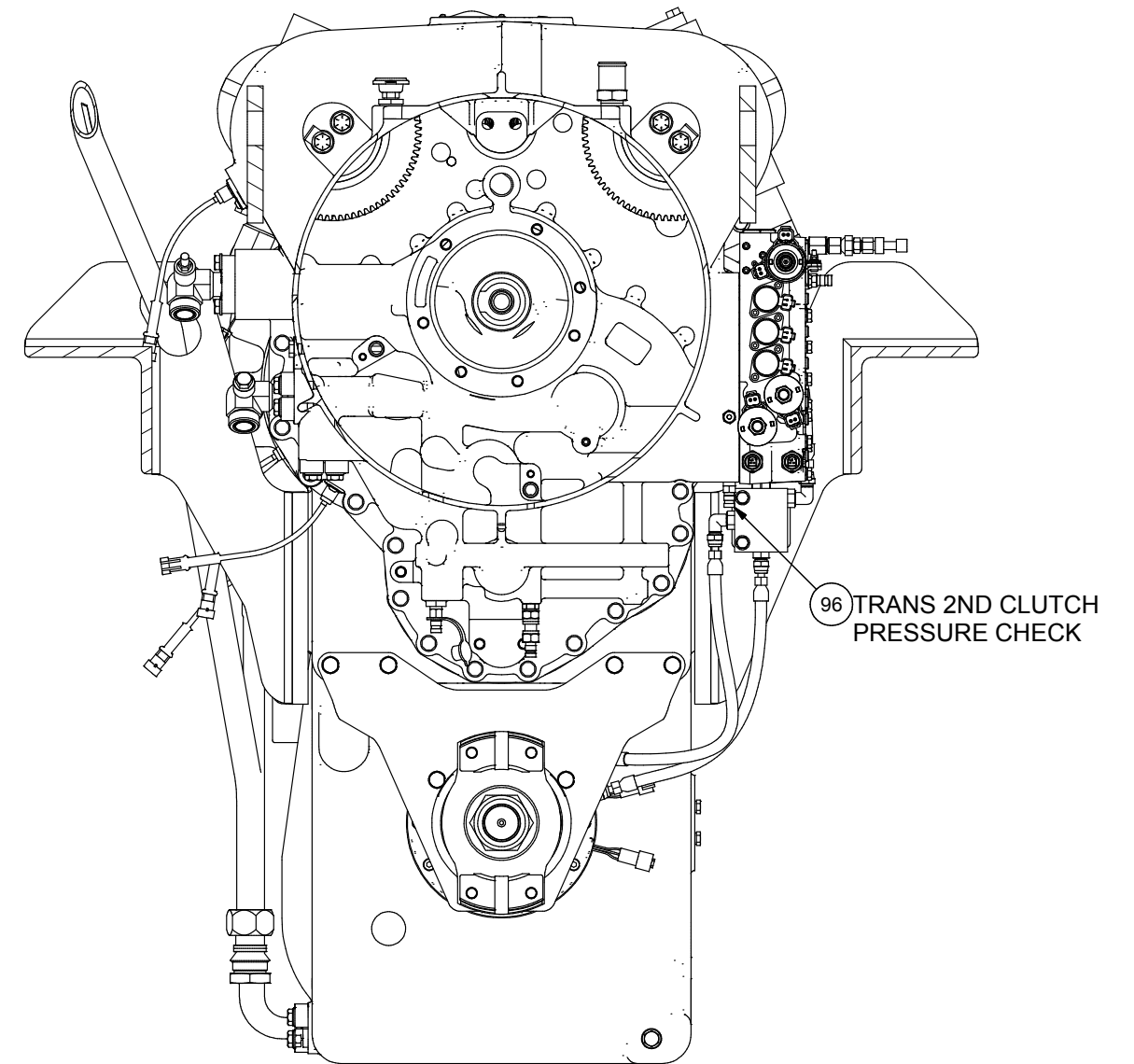
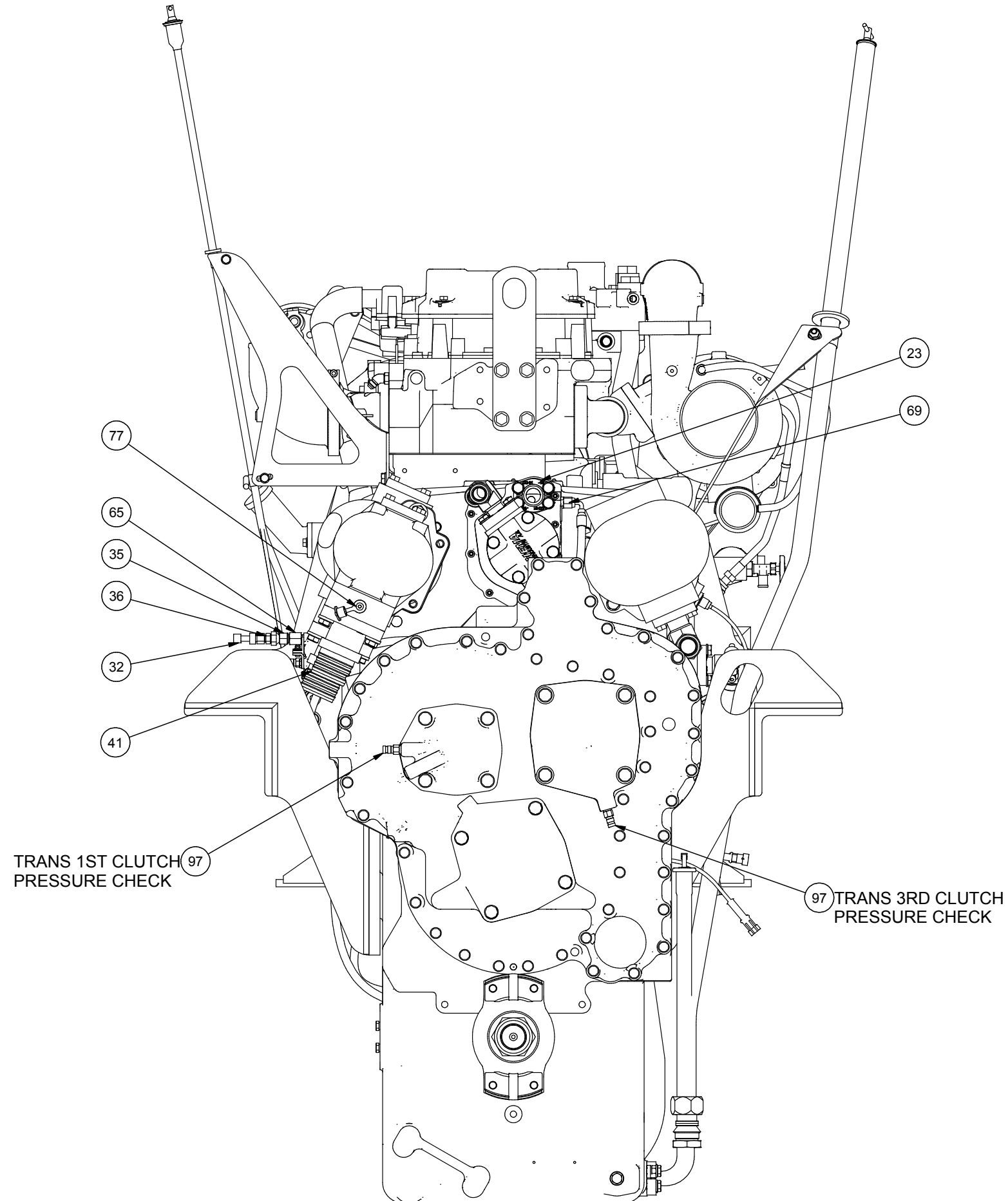


SECTION 2E-2E

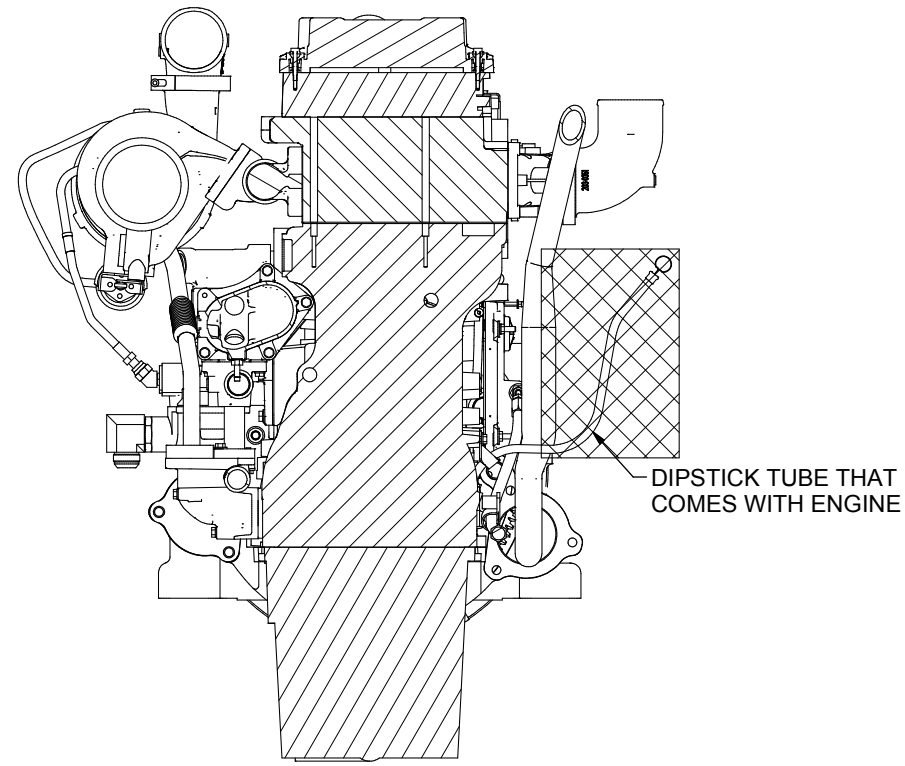


**SECTION 2K-2K
4WD DISCONNECT PLUMBING**

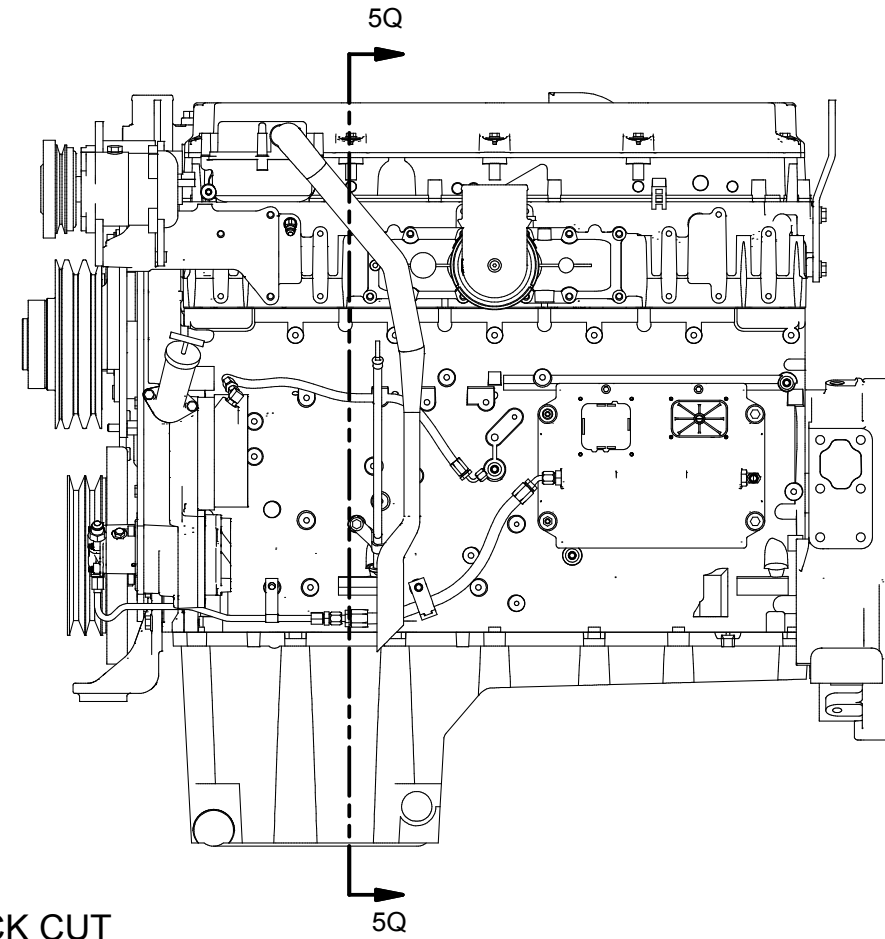




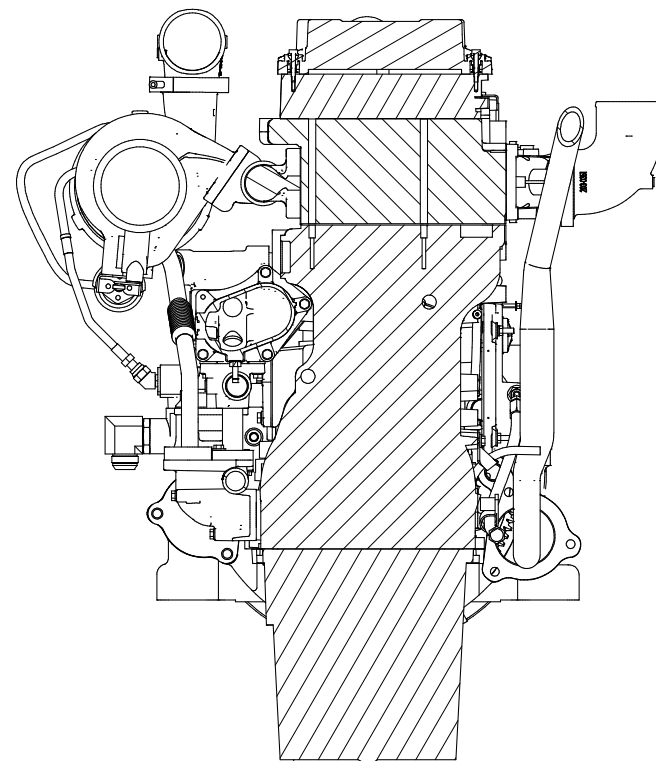
SECTION 4N-4N



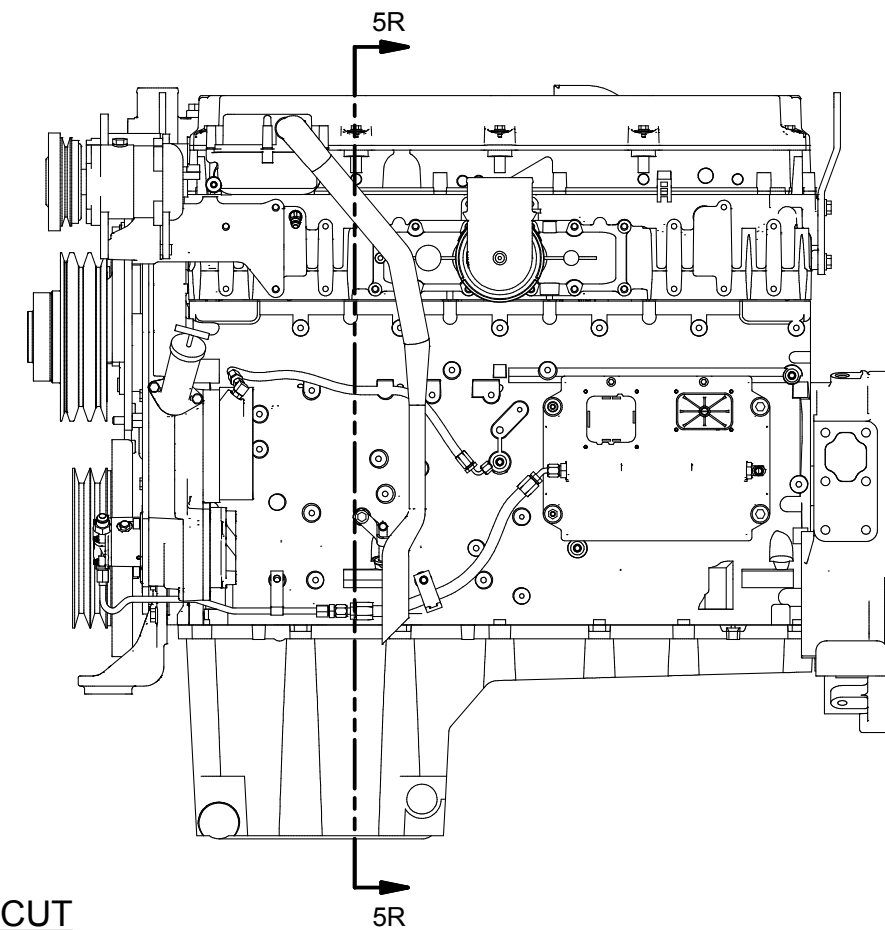
SECTION 5Q-5Q



BEFORE DIPSTICK CUT



SECTION 5R-5R



AFTER DIPSTICK CUT